

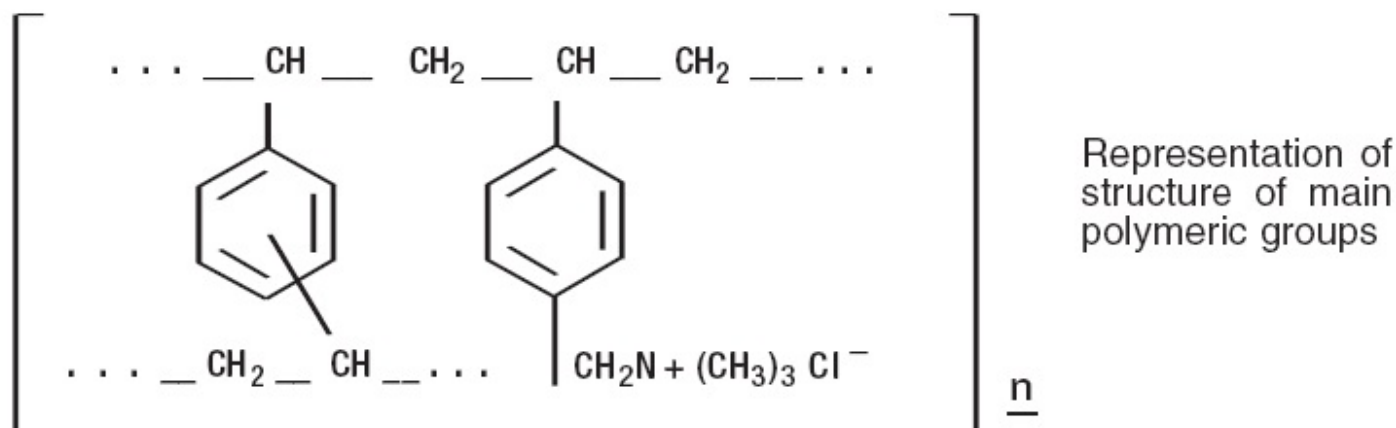
CHOLESTYRAMINE- cholestyramine powder, for suspension
Zydus Pharmaceuticals (USA) Inc.

Cholestyramine for Oral Suspension, USP

Rx only

DESCRIPTION

Cholestyramine for oral suspension USP, the chloride salt of a basic anion exchange resin, a cholesterol lowering agent, is intended for oral administration. Cholestyramine resin is quite hydrophilic, but insoluble in water. The cholestyramine resin in cholestyramine for oral suspension, USP is not absorbed from the digestive tract. Four grams of anhydrous cholestyramine resin is contained in 9 grams of cholestyramine for oral suspension, USP. It is represented by the following structural formula:



Cholestyramine for oral suspension, USP contains the following inactive ingredients: citric acid, d & c yellow # 10 aluminum lake, flavor (natural and artificial orange, natural and artificial vanilla), fd & c yellow # 6 aluminum lake, propylene glycol alginate, sucrose and xanthan gum.

ACTIONS/CLINICAL PHARMACOLOGY

Cholesterol is probably the sole precursor of bile acids. During normal digestion, bile acids are secreted into the intestines. A major portion of the bile acids is absorbed from the intestinal tract and returned to the liver via the enterohepatic circulation. Only very small amounts of bile acids are found in normal serum.

Cholestyramine for oral suspension resin adsorbs and combines with the bile acids in the intestine to form an insoluble complex which is excreted in the feces. This results in a partial removal of bile acids from the enterohepatic circulation by preventing their absorption.

The increased fecal loss of bile acids due to cholestyramine for oral suspension administration leads to an increased oxidation of cholesterol to bile acids, a decrease in

beta lipoprotein or low density lipoprotein plasma levels and a decrease in serum cholesterol levels. Although in man, cholestyramine for oral suspension produces an increase in hepatic synthesis of cholesterol, plasma cholesterol levels fall.

In patients with partial biliary obstruction, the reduction of serum bile acid levels by cholestyramine for oral suspension reduces excess bile acids deposited in the dermal tissue with resultant decrease in pruritus.

Clinical Studies

In a large, placebo-controlled, multi-clinic study, LRC-CPPT¹, hypercholesterolemic subjects treated with cholestyramine for oral suspension had mean reductions in total and low-density lipoprotein cholesterol (LDL-C) which exceeded those for diet and placebo treatment by 7.2% and 10.4%, respectively. Over the seven-year study period the cholestyramine for oral suspension group experienced a 19% reduction (relative to the incidence in the placebo group) in the combined rate of coronary heart disease death plus non-fatal myocardial infarction (cumulative incidences of 7% cholestyramine for oral suspension and 8.6% placebo). The subjects included in the study were men aged 35 to 59 with serum cholesterol levels above 265 mg/dL and no previous history of heart disease. It is not clear to what extent these findings can be extrapolated to females and other segments of the hypercholesterolemic population. (see also PRECAUTIONS: Carcinogenesis, Mutagenesis, Impairment of Fertility.)

Two controlled clinical trials have examined the effects of cholestyramine for oral suspension monotherapy upon coronary atherosclerotic lesions using coronary arteriography. In the NHLBI Type II Coronary Intervention Trial², 116 patients (80% male) with coronary artery disease (CAD) documented by arteriography were randomized to cholestyramine for oral suspension or placebo for five years of treatment. Final study arteriography revealed progression of coronary artery disease in 49% of placebo patients compared to 32% of the cholestyramine for oral suspension group ($p < 0.05$).

In the St. Thomas Atherosclerosis Regression Study (STARS)³, 90 hypercholesterolemic men with CAD were randomized to three blinded treatments: usual care, lipid-lowering diet, and lipid-lowering diet plus cholestyramine for oral suspension. After 36 months, follow-up coronary arteriography revealed progression of disease in 46% of usual care patients, 15% of patients on lipid-lowering diet and 12% of those receiving diet plus cholestyramine for oral suspension ($p < 0.02$). The mean absolute width of coronary segments decreased in the usual care group, increased slightly (0.003mm) in the diet group and increased by 0.103mm in the diet plus cholestyramine for oral suspension group ($p < 0.05$). Thus in these randomized controlled clinical trials using coronary arteriography, cholestyramine for oral suspension monotherapy has been demonstrated to slow progression^{2,3} and promote regression³ of atherosclerotic lesions in the coronary arteries of patients with coronary artery disease.

The effect of intensive lipid-lowering therapy on coronary atherosclerosis has been assessed by arteriography in hyperlipidemic patients. In these randomized, controlled clinical trials, patients were treated for two to four years by either conventional measures (diet, placebo, or in some cases low dose resin), or intensive combination therapy using diet plus colestipol (an anion exchange resin with a mechanism of action and an effect on serum lipids similar to that of cholestyramine for oral suspension) plus either nicotinic acid or lovastatin. When compared to conventional measures, intensive

lipid-lowering combination therapy significantly reduced the frequency of progression and increased the frequency of regression of coronary atherosclerotic lesions in patients with or at risk for coronary artery disease.

INDICATIONS AND USAGE

1) Cholestyramine for oral suspension is indicated as adjunctive therapy to diet for the reduction of elevated serum cholesterol in patients with primary hypercholesterolemia (elevated low density lipoprotein [LDL] cholesterol) who do not respond adequately to diet. Cholestyramine for oral suspension may be useful to lower LDL cholesterol in patients who also have hypertriglyceridemia, but it is not indicated where hypertriglyceridemia is the abnormality of most concern.

Therapy with lipid-altering agents should be a component of multiple risk factor intervention in those individuals at significantly increased risk for atherosclerotic vascular disease due to hypercholesterolemia. Treatment should begin and continue with dietary therapy specific for the type of hyperlipoproteinemia determined prior to initiation of drug therapy. Excess body weight may be an important factor and caloric restriction for weight normalization should be addressed prior to drug therapy in the overweight.

Prior to initiating therapy with cholestyramine for oral suspension secondary causes of hypercholesterolemia (e.g., poorly controlled diabetes mellitus, hypothyroidism, nephrotic syndrome, dysproteinemias, obstructive liver disease, other drug therapy, alcoholism), should be excluded, and a lipid profile performed to assess Total cholesterol, HDL-C, and triglycerides (TG). For individuals with TG less than 400 mg/dL (< 4.5 mmol/L), LDL-C can be estimated using the following equation:-

$$\text{LDL-C} = \text{Total cholesterol} - [(\text{TG}/5) + \text{HDL-C}]$$

For TG levels > 400 mg/dL, this equation is less accurate and LDL-C concentrations should be determined by ultracentrifugation. In hypertriglyceridemic patients, LDL-C may be low or normal despite elevated Total-C. In such cases cholestyramine for oral suspension may not be indicated.

Serum cholesterol and triglyceride levels should be determined periodically based on NCEP guidelines to confirm initial and adequate long-term response. A favorable trend in cholesterol reduction should occur during the first month of cholestyramine for oral suspension therapy. The therapy should be continued to sustain cholesterol reduction. If adequate cholesterol reduction is not attained, increasing the dosage of cholestyramine for oral suspension or adding other lipid-lowering agents in combination with cholestyramine for oral suspension should be considered.

Since the goal of treatment is to lower LDL-C, the NCEP⁴ recommends that LDL-C levels be used to initiate and assess treatment response. If LDL-C levels are not available then Total-C alone may be used to monitor long-term therapy. A lipoprotein analysis (including LDL-C determination) should be carried out once a year. The NCEP treatment guidelines are summarized below.

		LDL-Cholesterol mg/dL (mmol/ L)	
Definite	Two or More Other Risk Factors**	Initiation	Goal

Atherosclerotic Disease*		Level	
NO	NO	≥ 190 (≥ 4.9)	< 160 (< 4.1)
NO	YES	≥ 160 (≥ 4.1)	< 130 (< 3.4)
YES	YES OR NO	≥ 130 (≥ 3.4)	≤ 100 (≤ 2.6)

*Coronary heart disease or peripheral vascular disease (including symptomatic carotid artery disease).

**Other risk factors for coronary heart disease (CHD) include: age (males ≥ 45 years; females ≥ 55 years or premature menopause without estrogen replacement therapy); family history of premature CHD; current cigarette smoking; hypertension; confirmed HDL-C < 35 mg/dL (< 0.91 mmol/L); and diabetes mellitus. Subtract one risk factor if HDL-C is ≥ 60 mg/dL (≥ 1.6 mmol/L).

Cholestyramine for oral suspension monotherapy has been demonstrated to retard the rate of progression^{2,3} and increase the rate of regression³ of coronary atherosclerosis.

2) Cholestyramine for oral suspension is indicated for the relief of pruritus associated with partial biliary obstruction. Cholestyramine for oral suspension has been shown to have a variable effect on serum cholesterol in these patients. Patients with primary biliary cirrhosis may exhibit an elevated cholesterol as part of their disease.

CONTRAINDICATIONS

Cholestyramine for oral suspension is contraindicated in patients with complete biliary obstruction where bile is not secreted into the intestine and in those individuals who have shown hypersensitivity to any of its components.

PRECAUTIONS

General

Chronic use of cholestyramine for oral suspension may be associated with increased bleeding tendency due to hypoprothrombinemia associated with Vitamin K deficiency. This will usually respond promptly to parenteral Vitamin K₁ and recurrences can be prevented by oral administration of Vitamin K₁. Reduction of serum or red cell folate has been reported over long term administration of cholestyramine for oral suspension. Supplementation with folic acid should be considered in these cases.

There is a possibility that prolonged use of cholestyramine for oral suspension, since it is a chloride form of anion exchange resin, may produce hyperchloremic acidosis. This would especially be true in younger and smaller patients where the relative dosage may be higher. Caution should also be exercised in patients with renal insufficiency or volume depletion, and in patients receiving concomitant spironolactone.

Cholestyramine for oral suspension may produce or worsen pre-existing constipation. The dosage should be increased gradually in patients to minimize the risk of developing fecal impaction. In patients with pre-existing constipation, the starting dose should be 1 pouch or 1 scoop once daily for 5 to 7 days, increasing to twice daily with monitoring of

constipation and of serum lipoproteins, at least twice, 4 to 6 weeks apart. Increased fluid intake and fiber intake should be encouraged to alleviate constipation and a stool softener may occasionally be indicated. If the initial dose is well tolerated, the dose may be increased as needed by one dose/day (at monthly intervals) with periodic monitoring of serum lipoproteins.

If constipation worsens or the desired therapeutic response is not achieved at one to six doses/day, combination therapy or alternate therapy should be considered. Particular effort should be made to avoid constipation in patients with symptomatic coronary artery disease. Constipation associated with cholestyramine for oral suspension may aggravate hemorrhoids.

Information for Patients

Inform your physician if you are pregnant or plan to become pregnant or are breastfeeding. Drink plenty of fluids and mix each 9 gram dose of cholestyramine for oral suspension in at least 2 to 6 ounces of fluid before taking. Sipping or holding the resin suspension in the mouth for prolonged periods may lead to changes in the surface of the teeth resulting in discoloration, erosion of enamel or decay; good oral hygiene should be maintained.

Laboratory Tests

Serum cholesterol levels should be determined frequently during the first few months of therapy and periodically thereafter. Serum triglyceride levels should be measured periodically to detect whether significant changes have occurred.

The LRC-CPPT showed a dose-related increase in serum triglycerides of 10.7% to 17.1% in the cholestyramine-treated group, compared with an increase of 7.9% to 11.7% in the placebo group. Based on the mean values and adjusting for the placebo group, the cholestyramine-treated group showed an increase of 5% over pre-entry levels the first year of the study and an increase of 4.3% the seventh year.

Drug Interactions

Cholestyramine for oral suspension may delay or reduce the absorption of concomitant oral medication such as phenylbutazone, warfarin, thiazide diuretics (acidic), or propranolol (basic), as well as tetracycline, penicillin G, phenobarbital, thyroid and thyroxine preparations, estrogens and progestins, and digitalis. Interference with the absorption of oral phosphate supplements has been observed with another positively-charged bile acid sequestrant. Cholestyramine for oral suspension may interfere with the pharmacokinetics of drugs that undergo enterohepatic circulation. The discontinuance of cholestyramine for oral suspension could pose a hazard to health if a potentially toxic drug such as digitalis has been titrated to a maintenance level while the patient was taking cholestyramine for oral suspension.

Because cholestyramine binds bile acids, cholestyramine for oral suspension may interfere with normal fat digestion and absorption and thus may prevent absorption of fat-soluble vitamins such as A, D, E and K. When cholestyramine for oral suspension is given for long periods of time, concomitant supplementation with water-miscible (or parenteral) forms of fat-soluble vitamins should be considered.

SINCE CHOLESTYRAMINE FOR ORAL SUSPENSION MAY BIND OTHER DRUGS GIVEN

CONCURRENTLY, IT IS RECOMMENDED THAT PATIENTS TAKE OTHER DRUGS AT LEAST ONE HOUR BEFORE OR 4 TO 6 HOURS AFTER CHOLESTYRAMINE FOR ORAL SUSPENSION (OR AT AS GREAT AN INTERVAL AS POSSIBLE) TO AVOID IMPEDING THEIR ABSORPTION.

Carcinogenesis, Mutagenesis, Impairment of Fertility

In studies conducted in rats in which cholestyramine resin was used as a tool to investigate the role of various intestinal factors, such as fat, bile salts and microbial flora, in the development of intestinal tumors induced by potent carcinogens, the incidence of such tumors was observed to be greater in cholestyramine resin-treated rats than in control rats.

The relevance of this laboratory observation from studies in rats to the clinical use of cholestyramine for oral suspension is not known. In the LRC-CPPT study referred to above, the total incidence of fatal and nonfatal neoplasms was similar in both treatment groups. When the many different categories of tumors are examined, various alimentary system cancers were somewhat more prevalent in the cholestyramine group. The small numbers and the multiple categories prevent conclusions from being drawn. However, in view of the fact that cholestyramine resin is confined to the GI tract and not absorbed, and in light of the animal experiments referred to above, a six-year post-trial follow-up of the LRC-CPPT5 patient population has been completed (a total of 13.4 years of in-trial plus post-trial follow-up) and revealed no significant difference in the incidence of cause-specific mortality or cancer morbidity between cholestyramine and placebo treated patients.

Pregnancy

Pregnancy Category C

There are no adequate and well controlled studies in pregnant women. The use of cholestyramine for oral suspension in pregnancy or lactation or by women of childbearing age requires that the potential benefits of drug therapy be weighed against the possible hazards to the mother and child. Cholestyramine for oral suspension is not absorbed systemically, however, it is known to interfere with absorption of fat-soluble vitamins; accordingly, regular prenatal supplementation may not be adequate (see PRECAUTIONS: Drug Interactions).

Nursing Mothers

Caution should be exercised when cholestyramine for oral suspension is administered to a nursing mother. The possible lack of proper vitamin absorption described in the "**Pregnancy**" section may have an effect on nursing infants.

Pediatric Use

Although an optimal dosage schedule has not been established, standard texts^(6,7) list a usual pediatric dose of 240 mg/kg/day of anhydrous cholestyramine resin in two to three divided doses, normally not to exceed 8 gm/day with dose titration based on response and tolerance.

In calculating pediatric dosages, 44.4 mg of anhydrous cholestyramine resin are contained in 100 mg of cholestyramine for oral suspension.

The effects of long-term administration, as well as its effect in maintaining lowered cholesterol levels in pediatric patients, are unknown. (Also see ADVERSE REACTIONS.)

ADVERSE REACTIONS

The most common adverse reaction is constipation. When used as a cholesterol-lowering agent predisposing factors for most complaints of constipation are high dose and increased age (more than 60 years old). Most instances of constipation are mild, transient, and controlled with conventional therapy. Some patients require a temporary decrease in dosage or discontinuation of therapy.

Less Frequent Adverse Reactions

Abdominal discomfort and/or pain, flatulence, nausea, vomiting, diarrhea, eructation, anorexia, and steatorrhea, bleeding tendencies due to hypoprothrombinemia (Vitamin K deficiency) as well as Vitamin A (one case of night blindness reported) and D deficiencies, hyperchloremic acidosis in children, osteoporosis, rash and irritation of the skin, tongue and perianal area. Rare reports of intestinal obstruction, including two deaths, have been reported in pediatric patients.

Occasional calcified material has been observed in the biliary tree, including calcification of the gallbladder, in patients to whom cholestyramine for oral suspension has been given. However, this may be a manifestation of the liver disease and not drug related.

One patient experienced biliary colic on each of three occasions on which he took cholestyramine for oral suspension. One patient diagnosed as acute abdominal symptom complex was found to have a "pasty mass" in the transverse colon on x-ray.

Other events (not necessarily drug related) reported in patients taking cholestyramine for oral suspension include

Gastrointestinal

GI-rectal bleeding, black stools, hemorrhoidal bleeding, bleeding from known duodenal ulcer, dysphagia, hiccups, ulcer attack, sour taste, pancreatitis, rectal pain, diverticulitis.

Laboratory test changes

Liver function abnormalities.

Hematologic

Prolonged prothrombin time, ecchymosis, anemia.

Hypersensitivity

Urticaria, asthma, wheezing, shortness of breath.

Musculoskeletal

Backache, muscle and joint pains, arthritis.

Neurologic

Headache, anxiety, vertigo, dizziness, fatigue, tinnitus, syncope, drowsiness, femoral nerve pain, paresthesia.

Eye

Uveitis.

Renal

Hematuria, dysuria, burnt odor to urine, diuresis.

Miscellaneous

Weight loss, weight gain, increased libido, swollen glands, edema, dental bleeding, dental caries, erosion of tooth enamel, tooth discoloration.

OVERDOSAGE

Overdosage with cholestyramine for oral suspension has been reported in a patient taking 150% of the maximum recommended daily dosage for a period of several weeks. No ill effects were reported. Should an overdosage occur, the chief potential harm would be obstruction of the gastrointestinal tract. The location of such potential obstruction, the degree of obstruction, and the presence or absence of normal gut motility would determine treatment.

DOSAGE AND ADMINISTRATION

The recommended starting adult dose for cholestyramine for oral suspension is one pouch or one level scoopful once or twice a day. The recommended maintenance dose for cholestyramine for oral suspension is 2 to 4 pouches or scoopfuls daily (8 to 16 grams anhydrous cholestyramine resin) divided into two doses. Four grams of anhydrous cholestyramine resin is contained in each measured dose of cholestyramine for oral suspension as follows:

Cholestyramine for oral suspension	9 grams
------------------------------------	---------

It is recommended that increases in dose be gradual with periodic assessment of lipid/lipoprotein levels at intervals of not less than 4 weeks. The maximum recommended daily dose is six pouches or scoopfuls of cholestyramine for oral suspension (24 grams of anhydrous cholestyramine resin). The suggested time of administration is at mealtime but may be modified to avoid interference with absorption of other medications. Although the recommended dosing schedule is twice daily, cholestyramine for oral suspension may be administered in 1 to 6 doses per day.

Cholestyramine for oral suspension should not be taken in its dry form. Always mix cholestyramine for oral suspension with water or other fluids before ingesting. See Preparation Instructions.

Concomitant Therapy

Preliminary evidence suggests that the lipid-lowering effects of cholestyramine for oral suspension on total and LDL-cholesterol are enhanced when combined with a HMG-CoA reductase inhibitor, e.g., pravastatin, lovastatin, simvastatin, and fluvastatin. Additive effects on LDL-cholesterol are also seen with combined nicotinic acid /cholestyramine for oral suspension therapy. See the Drug Interactions subsection of the PRECAUTIONS section for recommendations on administering concomitant therapy.

PREPARATION

The color of cholestyramine for oral suspension may vary somewhat from batch to batch but this variation does not affect the performance of the product. Place the contents of one single-dose pouch or one level scoopful of cholestyramine for oral suspension in a glass or cup. Add an amount of water or other noncarbonated beverage of your choice depending on the product being used:

<u>Product Formula</u>	<u>Amount of Water or other Non-Carbonated Liquid</u>
Cholestyramine for oral suspension	2 to 6 ounces per dose

Stir to a uniform consistency and drink.

Cholestyramine for oral suspension may also be mixed with highly fluid soups or pulpy fruits with a high moisture content such as applesauce or crushed pineapple.

HOW SUPPLIED

Cholestyramine for Oral Suspension, USP is available in cans containing 378 grams and in cartons of sixty 9 gram pouches. Four grams of anhydrous cholestyramine resin are contained in 9 grams of cholestyramine for oral suspension, USP. The 378 grams can includes a 15 cc scoop. The scoop is not interchangeable with scoops from other products.

NDC 68382-528-42	Can, 378 grams
NDC 68382-528-60	Carton of 60, 9 grams pouches

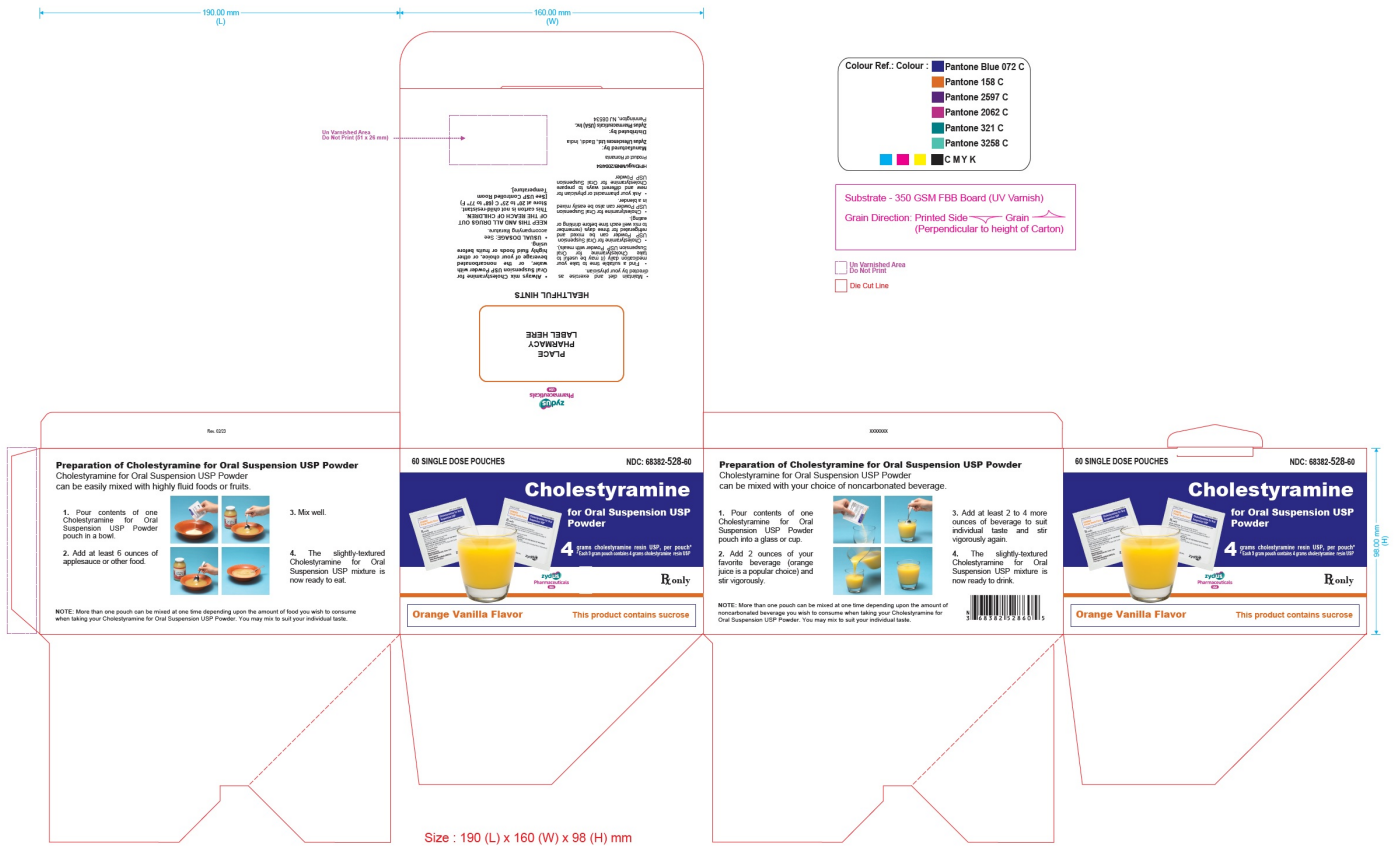
Storage

Store between 20° to 25°C (68° to 77°F). [See USP Controlled Room Temperature].

Call your doctor for medical advice about side effects. You may report side effects to FDA at 1-800-FDA-1088.

REFERENCES

1. The Lipid Research Clinics Coronary Primary Prevention Trials Results: (I) Reduction in Incidence of Coronary Heart Disease; (II) The Relationship of Reduction in Incidence of Coronary Heart Disease to Cholesterol Lowering. *JAMA* 1984; 251:351-374.
2. Brensike JF, Levy RI, Kelsey SF, et al. Effects of therapy with cholestyramine on progression of coronary arteriosclerosis: results of the NHLBI type II coronary intervention study. *Circulation* 1984;69:313-24.
3. Watts, GF, Lewis B, Brunt JNH Lewis ES, et al. Effects on coronary artery disease of lipid-lowering diet, or diet plus cholestyramine. In the St. Thomas Atherosclerosis Regression Study (STARS). *Lancet* 1992;339:563-69.
4. National Cholesterol Education Program. Second Report of the Expert Panel Detection, Evaluation, and Treatment of High Blood Cholesterol in Adults (Adult Treatment Panel II). *Circulation* 1994 Mar; 89(3):1333-445.
5. The Lipid Research Clinics Investigators. The Lipid Research Clinics Coronary Primary Prevention Trial: Results of 6 Years of Post-Trial Follow-up. *Arch Intern Med* 1992;



CHOLESTYRAMINE

cholestyramine powder, for suspension

Product Information

Product Type	HUMAN PRESCRIPTION DRUG	Item Code (Source)	NDC:68382-528
Route of Administration	ORAL		

Active Ingredient/Active Moiety

Ingredient Name	Basis of Strength	Strength
CHOLESTYRAMINE (UNII: 4B33BG1082) (CHOLESTYRAMINE - UNII:4B33BG1082)	CHOLESTYRAMINE	4 g in 9 g

Inactive Ingredients

Ingredient Name	Strength
D&C YELLOW NO. 10 (UNII: 35SW5USQ3G)	
FD&C YELLOW NO. 6 (UNII: H77VEI93A8)	
ORANGE (UNII: 5EVU04N5QU)	
SUCROSE (UNII: C151H8M554)	
ANHYDROUS CITRIC ACID (UNII: XF417D3PSL)	
XANTHAN GUM (UNII: TTV12P4NEE)	
PROPYLENE GLYCOL ALGINATE (UNII: 26CD3J2R0C)	

VANILLA (UNII: Q74T35078H)

Product Characteristics

Color		Score	
Shape		Size	
Flavor	ORANGE (ORANGE) , VANILLA (VANILLA)	Imprint Code	
Contains			

Packaging

#	Item Code	Package Description	Marketing Start Date	Marketing End Date
1	NDC:68382-528-42	378 g in 1 CAN; Type 0: Not a Combination Product	08/01/2018	
2	NDC:68382-528-60	60 in 1 CARTON	08/01/2018	
2		9 g in 1 POUCH; Type 0: Not a Combination Product		

Marketing Information

Marketing Category	Application Number or Monograph Citation	Marketing Start Date	Marketing End Date
ANDA	ANDA202901	08/01/2018	

Labeler - Zydus Pharmaceuticals (USA) Inc. (156861945)

Registrant - Zydus Pharmaceuticals (USA) Inc. (156861945)

Establishment

Name	Address	ID/FEI	Business Operations
Zydus Lifesciences Limited		677605858	ANALYSIS(68382-528) , MANUFACTURE(68382-528)

Revised: 1/2024

Zydus Pharmaceuticals (USA) Inc.