

XIGDUO XR- dapagliflozin and metformin hydrochloride tablet, film coated, extended release
AstraZeneca Pharmaceuticals LP

HIGHLIGHTS OF PRESCRIBING INFORMATION

These highlights do not include all the information needed to use XIGDUO XR safely and effectively. See full prescribing information for XIGDUO XR.

XIGDUO® XR (dapagliflozin and metformin hydrochloride extended-release) tablets, for oral use

Initial U.S. Approval: 2014

WARNING: LACTIC ACIDOSIS

See full prescribing information for complete boxed warning.

- **Postmarketing cases of metformin-associated lactic acidosis have resulted in death, hypothermia, hypotension, and resistant bradyarrhythmias. Symptoms included malaise, myalgias, respiratory distress, somnolence, and abdominal pain. Laboratory abnormalities included elevated blood lactate levels, anion gap acidosis, increased lactate/pyruvate ratio; and metformin plasma levels generally >5 mcg/mL. (5.1)**
- **Risk factors include renal impairment, concomitant use of certain drugs, age >65 years old, radiological studies with contrast, surgery and other procedures, hypoxic states, excessive alcohol intake, and hepatic impairment. Steps to reduce the risk of and manage metformin-associated lactic acidosis in these high-risk groups are provided in the Full Prescribing Information. (5.1)**
- **If lactic acidosis is suspected, discontinue XIGDUO XR and institute general supportive measures in a hospital setting. Prompt hemodialysis is recommended. (5.1)**

-----**RECENT MAJOR CHANGES**-----

Indications and Usage (1)	12/2024
Dosage and Administration (2.3)	06/2024

-----**INDICATIONS AND USAGE**-----

XIGDUO XR is a combination of dapagliflozin, a sodium-glucose cotransporter 2 (SGLT2) inhibitor, and metformin hydrochloride (HCl), a biguanide, indicated as an adjunct to diet and exercise to improve glycemic control in adults and pediatric patients aged 10 years and older with type 2 diabetes mellitus. (1) Dapagliflozin when used as a component of XIGDUO XR, is indicated in adults with type 2 diabetes mellitus to reduce the risk of:

- Sustained eGFR decline, end-stage kidney disease, cardiovascular death, and hospitalization for heart failure in patients with chronic kidney disease at risk of progression. (1)
- Cardiovascular death, hospitalization for heart failure, and urgent heart failure visit in patients with heart failure. (1)
- Hospitalization for heart failure in patients with type 2 diabetes mellitus and either established cardiovascular disease or multiple cardiovascular risk factors. (1)

Limitations of use:

- Not recommended for use to improve glycemic control in patients with type 1 diabetes mellitus. (1)
- Because of the metformin HCl component, the use of XIGDUO XR is limited to patients with type 2 diabetes mellitus for all indications. (1)
- Not recommended for the treatment of chronic kidney disease in patients with polycystic kidney disease or patients requiring or with a recent history of immunosuppressive therapy for the treatment of kidney disease. XIGDUO XR is not expected to be effective in these populations. (1)

-----**DOSAGE AND ADMINISTRATION**-----

- Assess renal function prior to initiating and then as clinically indicated. (2.1)
- Assess volume status and correct volume depletion before initiating. (2.1)
- Individualize the starting dosage based on the patient's current treatment. (2.3)
- Administer orally once daily in the morning with food. (2.2)
- To improve glycemic control, for patients aged 10 years and older not already taking dapagliflozin, the recommended starting dosage for dapagliflozin is 5 mg once daily. (2.3)

- For indications in adults related to heart failure and chronic kidney disease the recommended dosage of dapagliflozin is 10 mg once daily. (2.3)
- Do not exceed a daily dosage of 10 mg dapagliflozin/2,000 mg metformin HCl extended-release. (2.3)
- See Full Prescribing Information for dosage recommendations in patients with renal impairment. (2.4)
- XIGDUO XR may need to be discontinued at time of, or prior to, iodinated contrast imaging procedures. (2.5)
- Withhold XIGDUO XR for at least 3 days, if possible, prior to surgery or procedures associated with prolonged fasting. (2.6)

----- **DOSAGE FORMS AND STRENGTHS** -----

- 2.5 mg dapagliflozin/1,000 mg metformin HCl extended-release (3)
- 5 mg dapagliflozin/500 mg metformin HCl extended-release (3)
- 5 mg dapagliflozin/1,000 mg metformin HCl extended-release (3)
- 10 mg dapagliflozin/500 mg metformin HCl extended-release (3)
- 10 mg dapagliflozin/1,000 mg metformin HCl extended-release (3)

----- **CONTRAINDICATIONS** -----

- Severe renal impairment (eGFR below 30 mL/min/1.73 m²) or end-stage renal disease. (4)
- History of serious hypersensitivity to dapagliflozin, metformin HCl, or any of the excipients in XIGDUO XR. (4)
- Metabolic acidosis, including diabetic ketoacidosis. (4)

----- **WARNINGS AND PRECAUTIONS** -----

- *Lactic Acidosis*: See boxed warning. (5.1)
- *Diabetic Ketoacidosis in Patients with Type 1 Diabetes Mellitus and Other Ketoacidosis*: Consider ketone monitoring in patients at risk for ketoacidosis, as indicated. Assess for ketoacidosis regardless of presenting blood glucose levels and discontinue XIGDUO XR if ketoacidosis is suspected. Monitor patients for resolution of ketoacidosis before restarting. (5.2)
- *Volume Depletion*: Before initiating XIGDUO XR, assess and correct volume status in the elderly, patients with renal impairment or low systolic blood pressure, and in patients on diuretics. Monitor for signs and symptoms during therapy. (5.3)
- *Urosepsis and Pyelonephritis*: Evaluate patients for signs and symptoms of urinary tract infections and treat promptly, if indicated. (5.4)
- *Hypoglycemia*: Consider a lower dosage of insulin or an insulin secretagogue to reduce the risk of hypoglycemia when used concomitantly with XIGDUO XR. (5.5)
- *Necrotizing Fasciitis of the Perineum (Fournier's Gangrene)*: Serious, life-threatening cases have occurred in both females and males. Assess patients presenting with pain or tenderness, erythema, or swelling in the genital or perineal area, along with fever or malaise. If suspected, institute prompt treatment. (5.6)
- *Vitamin B₁₂ Deficiency*: Metformin may lower vitamin B₁₂ levels. Measure hematological parameters annually. (5.7)
- *Genital Mycotic Infections*: Monitor and treat if indicated. (5.8)

----- **ADVERSE REACTIONS** -----

- Adverse reactions reported in >5% of patients treated with XIGDUO XR were female genital mycotic infection, nasopharyngitis, urinary tract infection, diarrhea, and headache. (6.1)
- Adverse reactions reported in >5% of patients treated with metformin extended-release are: diarrhea and nausea/vomiting. (6.1)

To report SUSPECTED ADVERSE REACTIONS, contact AstraZeneca at 1-800-236-9933 or FDA at 1-800-FDA-1088 or www.fda.gov/medwatch.

----- **DRUG INTERACTIONS** -----

- *Carbonic anhydrase inhibitors*: May increase risk of lactic acidosis. Consider more frequent monitoring. (7)
- *Drugs that reduce metformin clearance*: May increase risk of lactic acidosis. Consider benefits and risks of concomitant use. (7)
- See full prescribing information for additional drug interactions and information on interference of XIGDUO XR with laboratory tests. (7)

----- **USE IN SPECIFIC POPULATIONS** -----

- *Pregnancy*: Advise females of the potential risk to a fetus, especially during the second and third trimesters. (8.1)
- *Lactation*: Not recommended when breastfeeding. (8.2)

- *Females and Males of Reproductive Potential*: Advise premenopausal females of the potential for an unintended pregnancy. (8.3)
- *Geriatrics*: Higher incidence of adverse reactions related to hypotension. Assess renal function more frequently. (8.5, 8.6)
- *Renal Impairment*: Higher incidence of adverse reactions related to volume depletion. (8.6)
- *Hepatic Impairment*: Avoid use in patients with hepatic impairment. (8.7)

See 17 for **PATIENT COUNSELING INFORMATION** and **Medication Guide**.

Revised: 12/2024

FULL PRESCRIBING INFORMATION: CONTENTS*

WARNING: LACTIC ACIDOSIS

1 INDICATIONS AND USAGE

2 DOSAGE AND ADMINISTRATION

- 2.1 Testing Prior to Initiation of XIGDUO XR
- 2.2 Recommended Administration
- 2.3 Recommended Dosage
- 2.4 Recommended Dosage in Patients with Renal Impairment
- 2.5 Discontinuation for Iodinated Contrast Imaging Procedures
- 2.6 Temporary Interruption for Surgery

3 DOSAGE FORMS AND STRENGTHS

4 CONTRAINDICATIONS

5 WARNINGS AND PRECAUTIONS

- 5.1 Lactic Acidosis
- 5.2 Diabetic Ketoacidosis in Patients with Type 1 Diabetes Mellitus and Other Ketoacidosis
- 5.3 Volume Depletion
- 5.4 Urosepsis and Pyelonephritis
- 5.5 Hypoglycemia with Concomitant Use with Insulin or Insulin Secretagogues
- 5.6 Necrotizing Fasciitis of the Perineum (Fournier's Gangrene)
- 5.7 Vitamin B₁₂ Concentrations
- 5.8 Genital Mycotic Infections

6 ADVERSE REACTIONS

- 6.1 Clinical Trials Experience
- 6.2 Postmarketing Experience

7 DRUG INTERACTIONS

8 USE IN SPECIFIC POPULATIONS

- 8.1 Pregnancy
- 8.2 Lactation
- 8.3 Females and Males of Reproductive Potential
- 8.4 Pediatric Use
- 8.5 Geriatric Use
- 8.6 Renal Impairment
- 8.7 Hepatic Impairment

10 OVERDOSAGE

11 DESCRIPTION

12 CLINICAL PHARMACOLOGY

- 12.1 Mechanism of Action
- 12.2 Pharmacodynamics
- 12.3 Pharmacokinetics

13 NONCLINICAL TOXICOLOGY

13.1 Carcinogenesis, Mutagenesis, Impairment of Fertility

14 CLINICAL STUDIES

14.1 Glycemic Control Trials in Adults with Type 2 Diabetes Mellitus

14.2 Glycemic Control in Pediatric Patients Aged 10 Years and Older with Type 2 Diabetes Mellitus

14.3 Cardiovascular Outcomes in Adults with Type 2 Diabetes Mellitus

14.4 Chronic Kidney Disease

14.5 Heart Failure

16 HOW SUPPLIED/STORAGE AND HANDLING

17 PATIENT COUNSELING INFORMATION

* Sections or subsections omitted from the full prescribing information are not listed.

FULL PRESCRIBING INFORMATION

WARNING: LACTIC ACIDOSIS

- **Postmarketing cases of metformin-associated lactic acidosis have resulted in death, hypothermia, hypotension, and resistant bradyarrhythmias. The onset of metformin-associated lactic acidosis is often subtle, accompanied only by non-specific symptoms such as malaise, myalgias, respiratory distress, somnolence, and abdominal pain. Metformin-associated lactic acidosis was characterized by elevated blood lactate levels (>5 mmol/L), anion gap acidosis (without evidence of ketonuria or ketonemia), an increased lactate/pyruvate ratio; and metformin plasma levels generally >5 mcg/mL [see *Warnings and Precautions (5.1)*].**
- **Risk factors for metformin-associated lactic acidosis include renal impairment, concomitant use of certain drugs (e.g., carbonic anhydrase inhibitors such as topiramate), age 65 years old or greater, having a radiological study with contrast, surgery and other procedures, hypoxic states (e.g., acute congestive heart failure), excessive alcohol intake, and hepatic impairment.**
- **Steps to reduce the risk of and manage metformin-associated lactic acidosis in these high-risk groups are provided in the full prescribing information [see *Dosage and Administration (2.1 and 2.4)*, *Contraindications (4)*, *Warnings and Precautions (5.1)*, *Drug Interactions (7)*, and *Use in Specific Populations (8.6, 8.7)*].**
- **If metformin-associated lactic acidosis is suspected, immediately discontinue XIGDUO XR and institute general supportive measures in a hospital setting. Prompt hemodialysis is recommended [see *Warnings and Precautions (5.1)*].**

1 INDICATIONS AND USAGE

XIGDUO XR is a combination of dapagliflozin and metformin hydrochloride (HCl) extended-release, indicated as an adjunct to diet and exercise to improve glycemic control in adults and pediatric patients aged 10 years and older with type 2 diabetes

mellitus.

Dapagliflozin, when used as a component of XIGDUO XR, is indicated in adults with type 2 diabetes mellitus to reduce the risk of:

- Sustained eGFR decline, end-stage kidney disease, cardiovascular death, and hospitalization for heart failure in patients with chronic kidney disease at risk of progression.
- Cardiovascular death, hospitalization for heart failure, and urgent heart failure visit in patients with heart failure.
- Hospitalization for heart failure in patients with type 2 diabetes mellitus and either established cardiovascular disease (CVD) or multiple cardiovascular (CV) risk factors.

Limitations of Use

- XIGDUO XR is not recommended for use to improve glycemic control in patients with type 1 diabetes mellitus [see *Warnings and Precautions (5.2)*].
- Because of the metformin HCl component, the use of XIGDUO XR is limited to patients with type 2 diabetes mellitus for all indications.
- XIGDUO XR is not recommended for the treatment of chronic kidney disease in patients with polycystic kidney disease or patients requiring or with a recent history of immunosuppressive therapy for kidney disease. XIGDUO XR is not expected to be effective in these populations.

2 DOSAGE AND ADMINISTRATION

2.1 Testing Prior to Initiation of XIGDUO XR

- Assess renal function prior to initiating XIGDUO XR and then as clinically indicated [see *Warnings and Precautions (5.1, 5.3)*].
- Assess volume status. In patients with volume depletion, correct this condition before initiating XIGDUO XR [see *Warnings and Precautions (5.3) and Use in Specific Populations (8.5, 8.6)*].

2.2 Recommended Administration

- Take XIGDUO XR orally once daily in the morning with food.
- Swallow XIGDUO XR tablets whole and never crush, cut, or chew.

2.3 Recommended Dosage

- Individualize the starting dosage of XIGDUO XR based upon the patient's current regimen. Patients taking an evening dosage of metformin HCl extended-release should skip their last dose before starting XIGDUO XR.
- To improve glycemic control in adults and pediatric patients aged 10 years and older not already taking:
 - Dapagliflozin: the recommended starting dosage of dapagliflozin in XIGDUO XR is 5 mg orally once daily.
 - Metformin HCl extended-release: the recommended starting dosage of metformin HCl extended-release in XIGDUO XR is 500 mg orally once daily.

- For XIGDUO XR indications in adults related to heart failure and chronic kidney disease, the recommended dosage of dapagliflozin in XIGDUO XR is 10 mg orally once daily.
- For all XIGDUO XR indications, the dosage may be adjusted based on effectiveness and tolerability. The maximum recommended daily dosage of dapagliflozin is 10 mg and 2,000 mg of metformin HCl extended-release, with gradual dosage escalation to reduce gastrointestinal adverse reactions with metformin HCl [see Adverse Reactions (6.1)].

2.4 Recommended Dosage in Patients with Renal Impairment

- The recommended dosage of XIGDUO XR in patients with an estimated glomerular filtration rate (eGFR) greater than or equal to 45 mL/min/1.73 m² is the same as the recommended dosage in patients with normal renal function.
- Initiation of XIGDUO XR is not recommended in patients with an eGFR between 30 and 45 mL/min/1.73 m². Assess the benefit and risk of continuing therapy if eGFR falls persistently below this level.
 - Dapagliflozin is likely to be ineffective to improve glycemic control in patients with eGFR less than 45 mL/min/1.73 m².
 - Metformin HCl initiation is not recommended for patients with eGFR less than 45 mL/min/1.73 m².
- XIGDUO XR is contraindicated in patients with an eGFR below 30 mL/min/1.73 m² and end-stage renal disease due to the metformin HCl component [see *Contraindications (4)*, *Warnings and Precautions (5.1, 5.2)*, and *Use in Specific Populations (8.6)*].

2.5 Discontinuation for Iodinated Contrast Imaging Procedures

Discontinue XIGDUO XR at the time of, or prior to, an iodinated contrast imaging procedure in patients with an eGFR less than 60 mL/min/1.73 m², in patients with a history of liver disease, alcoholism or heart failure; or in patients who will be administered intra-arterial iodinated contrast. Re-evaluate eGFR 48 hours after the imaging procedure; restart XIGDUO XR if renal function is stable [see *Warnings and Precautions (5.1)*].

2.6 Temporary Interruption for Surgery

Withhold XIGDUO XR for at least 3 days, if possible, prior to surgery or procedures associated with prolonged fasting. Resume XIGDUO XR when the patient is clinically stable and has resumed oral intake [see *Warnings and Precautions (5.2)* and *Clinical Pharmacology (12.2)*].

3 DOSAGE FORMS AND STRENGTHS

XIGDUO XR (dapagliflozin and metformin HCl) extended-release tablets are available as follows:

Table 1: Dosage Forms and Strengths for XIGDUO XR

Dapagliflozin Strength	Metformin HCl Strength	Color/Shape	Tablet Markings
2.5 mg	1,000 mg	light brown to brown, biconvex, oval-shaped, and	"1074" and "2.5/1000" debossed on one side

		film-coated tablet	and plain on the reverse side
5 mg	500 mg	orange, biconvex, capsule-shaped, and film-coated tablet	"1070" and "5/500" debossed on one side and plain on the reverse side
5 mg	1,000 mg	pink to dark pink, biconvex, oval-shaped, and film-coated tablet	"1071" and "5/1000" debossed on one side and plain on the reverse side
10 mg	500 mg	pink, biconvex, capsule-shaped, and film-coated tablet	"1072" and "10/500" debossed on one side and plain on the reverse side
10 mg	1,000 mg	yellow to dark yellow, biconvex, oval-shaped, and film-coated tablet	"1073" and "10/1000" debossed on one side and plain on the reverse side

4 CONTRAINDICATIONS

XIGDUO XR is contraindicated in patients with:

- Severe renal impairment (eGFR below 30 mL/min/1.73 m²) or end-stage renal disease [see *Warnings and Precautions (5.1)*].
- History of a serious hypersensitivity reaction to dapagliflozin, metformin HCl, or any of the excipients in XIGDUO XR. Serious hypersensitivity reactions, including anaphylaxis and angioedema have been reported with dapagliflozin [see *Adverse Reactions (6.1)*].
- Acute or chronic metabolic acidosis, including diabetic ketoacidosis, with or without coma. Diabetic ketoacidosis should be treated with insulin [see *Warnings and Precautions (5.1) and Warnings and Precautions (5.2)*].

5 WARNINGS AND PRECAUTIONS

5.1 Lactic Acidosis

There have been post-marketing cases of metformin-associated lactic acidosis, including fatal cases. These cases had a subtle onset and were accompanied by non-specific symptoms such as malaise, myalgias, abdominal pain, respiratory distress, or increased somnolence; however, hypothermia, hypotension and resistant bradyarrhythmias have occurred with severe acidosis.

Metformin-associated lactic acidosis was characterized by elevated blood lactate concentrations (>5 mmol/L), anion gap acidosis (without evidence of ketonuria or ketonemia), and an increased lactate: pyruvate ratio; metformin plasma levels generally >5 mcg/mL. Metformin decreases liver uptake of lactate increasing lactate blood levels which may increase the risk of lactic acidosis, especially in patients at risk.

If metformin-associated lactic acidosis is suspected, general supportive measures should be instituted promptly in a hospital setting, along with immediate discontinuation of XIGDUO XR.

In XIGDUO XR-treated patients with a diagnosis or strong suspicion of lactic acidosis,

prompt hemodialysis is recommended to correct the acidosis and remove accumulated metformin (metformin HCl is dialyzable, with a clearance of up to 170 mL/min under good hemodynamic conditions). Hemodialysis has often resulted in reversal of symptoms and recovery.

Educate patients and their families about the symptoms of lactic acidosis and if these symptoms occur, instruct them to discontinue XIGDUO XR and report these symptoms to their healthcare provider.

For each of the known and possible risk factors for metformin-associated lactic acidosis, recommendations to reduce the risk of and manage metformin-associated lactic acidosis are provided below:

Renal Impairment: The postmarketing metformin-associated lactic acidosis cases primarily occurred in patients with significant renal impairment. The risk of metformin accumulation and metformin-associated lactic acidosis increases with the severity of renal impairment because metformin is substantially excreted by the kidney. Clinical recommendations based upon the patient's renal function include [see *Dosage and Administration* (2.1, 2.4) and *Clinical Pharmacology* (12.3)]:

- Before initiating XIGDUO XR, obtain an estimated glomerular filtration rate (eGFR).
- XIGDUO XR is contraindicated in patients with an eGFR less than 30 mL/min/1.73 m² [see *Contraindications* (4)].
- Obtain an eGFR at least annually in all patients taking XIGDUO XR. In patients at increased risk for the development of renal impairment (e.g., the elderly), renal function should be assessed more frequently.

Drug Interactions: The concomitant use of XIGDUO XR with specific drugs may increase the risk of metformin-associated lactic acidosis: those that impair renal function, result in significant hemodynamic change, interfere with acid-base balance or increase metformin accumulation (e.g., cationic drugs) [see *Drug Interactions* (7)]. Therefore, consider more frequent monitoring of patients.

Age 65 or Greater: The risk of metformin-associated lactic acidosis increases with the patient's age because elderly patients have a greater likelihood of having hepatic, renal, or cardiac impairment than younger patients. Assess renal function more frequently in elderly patients [see *Use in Specific Populations* (8.5)].

Radiological Studies with Contrast: Administration of intravascular iodinated contrast agents in metformin-treated patients has led to an acute decrease in renal function and the occurrence of lactic acidosis. Stop XIGDUO XR at the time of, or prior to, an iodinated contrast imaging procedure in patients with a history of hepatic impairment, alcoholism, or heart failure; or in patients who will be administered intra-arterial iodinated contrast. Re-evaluate eGFR 48 hours after the imaging procedure, and restart XIGDUO XR if renal function is stable.

Surgery and Other Procedures: Withholding of food and fluids during surgical or other procedures may increase the risk for volume depletion, hypotension and renal impairment. XIGDUO XR should be temporarily discontinued while patients have restricted food and fluid intake.

Hypoxic States: Several of the postmarketing cases of metformin-associated lactic acidosis occurred in the setting of acute congestive heart failure (particularly when accompanied by hypoperfusion and hypoxemia). Cardiovascular collapse (shock), acute myocardial infarction, sepsis, and other conditions associated with hypoxemia have been associated with lactic acidosis and may also cause prerenal azotemia. When such events occur, discontinue XIGDUO XR.

Excessive Alcohol Intake: Alcohol potentiates the effect of metformin on lactate metabolism and this may increase the risk of metformin-associated lactic acidosis. Warn patients against excessive alcohol intake while receiving XIGDUO XR.

Hepatic Impairment: Patients with hepatic impairment have developed with cases of metformin-associated lactic acidosis. This may be due to impaired lactate clearance resulting in higher lactate blood levels. Therefore, avoid use of XIGDUO XR in patients with clinical or laboratory evidence of hepatic disease.

5.2 Diabetic Ketoacidosis in Patients with Type 1 Diabetes Mellitus and Other Ketoacidosis

In patients with type 1 diabetes mellitus, dapagliflozin, a component of XIGDUO XR, significantly increases the risk of diabetic ketoacidosis, a life-threatening event, beyond the background rate. In placebo-controlled trials of patients with type 1 diabetes mellitus, the risk of ketoacidosis was markedly increased in patients who received sodium-glucose cotransporter 2 (SGLT2) inhibitors compared to patients who received placebo. XIGDUO XR is not indicated for glycemic control in patients with type 1 diabetes mellitus.

Type 2 diabetes mellitus and pancreatic disorders (e.g., history of pancreatitis or pancreatic surgery) are also risk factors for ketoacidosis. There have been postmarketing reports of fatal events of ketoacidosis in patients with type 2 diabetes mellitus using SGLT2 inhibitors, including dapagliflozin.

Precipitating conditions for diabetic ketoacidosis or other ketoacidosis include under-insulinization due to insulin dose reduction or missed insulin doses, acute febrile illness, reduced caloric intake, ketogenic diet, surgery, volume depletion, and alcohol abuse.

Signs and symptoms are consistent with dehydration and severe metabolic acidosis and include nausea, vomiting, abdominal pain, generalized malaise, and shortness of breath. Blood glucose levels at presentation may be below those typically expected for diabetic ketoacidosis (e.g., less than 250 mg/dL). Ketoacidosis and glucosuria may persist longer than typically expected. Urinary glucose excretion persists for 3 days after discontinuing XIGDUO XR [see Clinical Pharmacology (12.2)]; however, there have been postmarketing reports of ketoacidosis and/or glucosuria lasting greater than 6 days and some up to 2 weeks after discontinuation of SGLT2 inhibitors.

Consider ketone monitoring in patients at risk for ketoacidosis if indicated by the clinical situation. Assess for ketoacidosis regardless of presenting blood glucose levels in patients who present with signs and symptoms consistent with severe metabolic acidosis. If ketoacidosis is suspected, discontinue XIGDUO XR, promptly evaluate, and treat ketoacidosis, if confirmed. Monitor patients for resolution of ketoacidosis before restarting XIGDUO XR.

Withhold XIGDUO XR, if possible, in temporary clinical situations that could predispose patients to ketoacidosis. Resume XIGDUO XR when the patient is clinically stable and has resumed oral intake [see *Dosage and Administration* (2.6)].

Educate all patients on the signs and symptoms of ketoacidosis and instruct patients to discontinue XIGDUO XR and seek medical attention immediately if signs and symptoms occur.

5.3 Volume Depletion

Dapagliflozin can cause intravascular volume depletion which may sometimes manifest as symptomatic hypotension or acute transient changes in creatinine. There have been post-marketing reports of acute kidney injury, some requiring hospitalization and

dialysis, in patients with type 2 diabetes mellitus receiving SGLT2 inhibitors, including dapagliflozin. Patients with impaired renal function (eGFR less than 60 mL/min/1.73 m²), elderly patients, or patients on loop diuretics may be at increased risk for volume depletion or hypotension. Before initiating XIGDUO XR in patients with one or more of these characteristics, assess volume status and renal function. Monitor for signs and symptoms of hypotension and renal function after initiating therapy.

5.4 Urosepsis and Pyelonephritis

Serious urinary tract infections including urosepsis and pyelonephritis requiring hospitalization have been reported in patients receiving SGLT2 inhibitors, including dapagliflozin. Treatment with SGLT2 inhibitors increases the risk for urinary tract infections. Evaluate patients for signs and symptoms of urinary tract infections and treat promptly, if indicated [*see Adverse Reactions (6.2)*].

5.5 Hypoglycemia with Concomitant Use with Insulin or Insulin Secretagogues

Insulin and insulin secretagogues (e.g., sulfonylureas) are known to cause hypoglycemia. XIGDUO XR may increase the risk of hypoglycemia when combined with insulin and/or an insulin secretagogue [*see Adverse Reactions (6.1)*]. The risk of hypoglycemia may be lowered by a reduction in the dose of sulfonylurea (or other concomitantly administered insulin secretagogues) or insulin. Inform patients using these concomitant medications of the risk of hypoglycemia and educate them on the signs and symptoms of hypoglycemia.

5.6 Necrotizing Fasciitis of the Perineum (Fournier's Gangrene)

Reports of necrotizing fasciitis of the perineum (Fournier's Gangrene), a rare but serious and life-threatening necrotizing infection requiring urgent surgical intervention, have been identified in postmarketing surveillance in patients with diabetes mellitus receiving SGLT2 inhibitors, including dapagliflozin. Cases have been reported in both females and males. Serious outcomes have included hospitalization, multiple surgeries, and death.

Patients treated with XIGDUO XR presenting with pain or tenderness, erythema, or swelling in the genital or perineal area, along with fever or malaise, should be assessed for necrotizing fasciitis. If suspected, start treatment immediately with broad-spectrum antibiotics and, if necessary, surgical debridement. Discontinue XIGDUO XR, closely monitor blood glucose levels, and provide appropriate alternative therapy for glycemic control.

5.7 Vitamin B₁₂ Concentrations

In controlled clinical trials of metformin of 29-week duration, a decrease to subnormal levels of previously normal serum vitamin B₁₂ levels, without clinical manifestations, was observed in approximately 7% of patients. Such decrease, possibly due to interference with B₁₂ absorption from the B₁₂-intrinsic factor complex, may be associated with anemia but appears to be rapidly reversible with discontinuation of metformin or vitamin B₁₂ supplementation. Certain individuals (those with inadequate vitamin B₁₂ or calcium intake or absorption) appear to be predisposed to developing subnormal vitamin B₁₂ levels. Measure hematologic parameters on an annual basis and vitamin B₁₂ at 2- to 3-year intervals in patients on XIGDUO XR and manage any abnormalities [*see Adverse Reactions (6.1)*].

5.8 Genital Mycotic Infections

Dapagliflozin increases the risk of genital mycotic infections. Patients with a history of

genital mycotic infections were more likely to develop genital mycotic infections [see *Adverse Reactions (6.1)*]. Monitor and treat appropriately.

6 ADVERSE REACTIONS

The following important adverse reactions are described below and elsewhere in the labeling:

- Lactic Acidosis [see *Boxed Warning and Warnings and Precautions (5.1)*]
- Diabetic Ketoacidosis in Patients with Type 1 Diabetes Mellitus and Other Ketoacidosis [see *Warnings and Precautions (5.2)*]
- Volume Depletion [see *Warnings and Precautions (5.3)*]
- Urosepsis and Pyelonephritis [see *Warnings and Precautions (5.4)*]
- Hypoglycemia with Concomitant Use with Insulin or Insulin Secretagogues [see *Warnings and Precautions (5.5)*]
- Necrotizing Fasciitis of the Perineum (Fournier's Gangrene) [see *Warnings and Precautions (5.6)*]
- Vitamin B₁₂ Concentrations [see *Warnings and Precautions (5.7)*]
- Genital Mycotic Infections [see *Warnings and Precautions (5.8)*]

6.1 Clinical Trials Experience

Because clinical trials are conducted under widely varying conditions, adverse reaction rates observed in the clinical trials of a drug cannot be directly compared to rates in the clinical trials of another drug and may not reflect the rates observed in clinical practice.

Clinical Trials with Metformin HCl Extended-Release in Adults with Type 2 Diabetes Mellitus

In placebo-controlled monotherapy trials of metformin HCl extended-release, diarrhea and nausea/vomiting were reported in >5% of metformin-treated patients and more commonly than in placebo-treated patients (9.6% versus 2.6% for diarrhea and 6.5% versus 1.5% for nausea/vomiting). Diarrhea led to discontinuation of study medication in 0.6% of the patients treated with metformin HCl extended-release.

Clinical Trials with Dapagliflozin in Adults

Dapagliflozin

Dapagliflozin has been evaluated in clinical trials in adult and pediatric patients 10 years of age and older with type 2 diabetes mellitus, in adult patients with heart failure, and in adult patients with chronic kidney disease. The overall safety profile of dapagliflozin was consistent across the studied indications. No new adverse reactions were identified in the DAPA-HF, DELIVER and DAPA-CKD trials.

Pools of Placebo-Controlled Clinical Trials for Glycemic Control in Adults

Pool of 8 Placebo-Controlled Adult Trials for Dapagliflozin and Metformin HCl for Glycemic Control

Data from a prespecified pool of adult patients from 8 short-term, placebo-controlled trials of dapagliflozin coadministered with metformin HCl immediate- or extended-release was used to evaluate safety. This pool included several add-on trials (metformin HCl alone and in combination with a dipeptidyl peptidase-4 [DPP4] inhibitor and metformin HCl, or insulin and metformin HCl, 2 initial combination with metformin HCl trials, and 2 trials of patients with CVD and type 2 diabetes mellitus who received their usual treatment [with metformin HCl as background therapy]). For trials that included background therapy with and without metformin HCl, only patients who received

metformin HCl were included in the 8-trial placebo-controlled pool. Across these 8 trials, 983 patients were treated once daily with dapagliflozin 10 mg and metformin HCl, and 1185 were treated with placebo and metformin HCl. These 8 trials provide a mean duration of exposure of 23 weeks. The mean age of the population was 57 years and 2% were older than 75 years. Fifty-four percent (54%) of the population was male; 88% White, 6% Asian, and 3% Black or African American. At baseline, the population had diabetes for an average of 8 years, mean hemoglobin A1c (HbA1c) was 8.4%, and renal function was normal or mildly impaired in 90% of patients and moderately impaired in 10% of patients.

The overall incidence of adverse events for the 8-trial, short-term, placebo-controlled pool in adult patients treated with dapagliflozin 10 mg and metformin HCl was 60.3% compared to 58.2% for the placebo and metformin HCl group. Discontinuation of therapy due to adverse events in patients who received dapagliflozin 10 mg and metformin HCl was 4% compared to 3.3% for the placebo and metformin HCl group. The most commonly reported events leading to discontinuation and reported in at least 3 patients treated with dapagliflozin 10 mg and metformin HCl were renal impairment (0.7%), increased blood creatinine (0.2%), decreased renal creatinine clearance (0.2%), and urinary tract infection (0.2%).

Table 2 shows common adverse reactions in adults associated with the use of dapagliflozin and metformin HCl. These adverse reactions were not present at baseline, occurred more commonly on dapagliflozin and metformin HCl than on placebo, and occurred in at least 2% of patients treated with either dapagliflozin 5 mg or dapagliflozin 10 mg.

Table 2: Adverse Reactions in Placebo-Controlled Trials Reported in $\geq 2\%$ of Adult Patients Treated with Dapagliflozin and Metformin HCl

Adverse Reaction	% of Patients		
	Pool of 8 Placebo-Controlled Trials		
	Placebo and Metformin HCl N=1185	Dapagliflozin 5 mg and Metformin HCl N=410	Dapagliflozin 10 mg and Metformin HCl N=983
Female genital mycotic infections*	1.5	9.4	9.3
Nasopharyngitis	5.9	6.3	5.2
Urinary tract infections†	3.6	6.1	5.5
Diarrhea	5.6	5.9	4.2
Headache	2.8	5.4	3.3
Male genital mycotic infections‡	0	4.3	3.6
Influenza	2.4	4.1	2.6
Nausea	2.0	3.9	2.6
Back pain	3.2	3.4	2.5
Dizziness	2.2	3.2	1.8
Cough	1.9	3.2	1.4
Constipation	1.6	2.9	1.9
Dyslipidemia	1.4	2.7	1.5
Pharyngitis	1.1	2.7	1.5
Increased urination§	1.4	2.4	2.6

Discomfort with urination	1.1	2.2	1.6
---------------------------	-----	-----	-----

- * Genital mycotic infections include the following adverse reactions, listed in order of frequency reported for females: vulvovaginal mycotic infection, vaginal infection, genital infection, vulvovaginitis, fungal genital infection, vulvovaginal candidiasis, vulval abscess, genital candidiasis, and vaginitis bacterial. (N for females: Placebo and metformin HCl=534, dapagliflozin 5 mg and metformin HCl=223, dapagliflozin 10 mg and metformin HCl=430).
- † Urinary tract infections include the following adverse reactions, listed in order of frequency reported: urinary tract infection, cystitis, pyelonephritis, urethritis, and prostatitis.
- ‡ Genital mycotic infections include the following adverse reactions, listed in order of frequency reported for males: balanitis, fungal genital infection, balanitis candida, genital candidiasis, genital infection, posthitis, and balanoposthitis. (N for males: Placebo and metformin HCl=651, dapagliflozin 5 mg and metformin HCl=187, dapagliflozin 10 mg and metformin HCl=553).
- § Increased urination includes the following adverse reactions, listed in order of frequency reported: pollakiuria, polyuria, and urine output increased.

Pool of 12 Placebo-Controlled Adult Trials for Dapagliflozin 5 and 10 mg for Glycemic Control

The data in Table 3 are derived from 12 glycemic control placebo-controlled trials in adults ranging from 12 to 24 weeks. In 4 trials dapagliflozin was used as monotherapy, and in 8 trials dapagliflozin was used as add-on to background antidiabetic therapy or as combination therapy with metformin HCl [see *Clinical Studies (14.1)*].

These data reflect exposure of 2338 adult patients to dapagliflozin with a mean exposure duration of 21 weeks. Patients received placebo (N=1393), dapagliflozin 5 mg (N=1145), or dapagliflozin 10 mg (N=1193) once daily. The mean age of the population was 55 years and 2% were older than 75 years of age. Fifty percent (50%) of the population were male; 81% were White, 14% were Asian, and 3% were Black or African American. At baseline, the population had diabetes for an average of 6 years, had a mean HbA1c of 8.3%, and 21% had established microvascular complications of diabetes. Baseline renal function was normal or mildly impaired in 92% of patients and moderately impaired in 8% of patients (mean eGFR 86 mL/min/1.73 m²).

Table 3 shows common adverse reactions in adults associated with the use of dapagliflozin. These adverse reactions were not present at baseline, occurred more commonly on dapagliflozin than on placebo, and occurred in at least 2% of patients treated with either dapagliflozin 5 mg or dapagliflozin 10 mg.

Table 3: Adverse Reactions in Placebo-Controlled Trials of Glycemic Control Reported in ≥2% of Adults Treated with Dapagliflozin

Adverse Reaction	% of Patients		
	Pool of 12 Placebo-Controlled Trials		
	Placebo N=1393	Dapagliflozin 5 mg N=1145	Dapagliflozin 10 mg N=1193
Female genital mycotic infections*	1.5	8.4	6.9
Nasopharyngitis	6.2	6.6	6.3
Urinary tract infections†	3.7	5.7	4.3
Back pain	3.2	3.1	4.2
Increased urination‡	1.7	2.9	3.8
Male genital mycotic infections§	0.3	2.8	2.7
Nausea	2.4	2.8	2.5

Influenza	2.3	2.7	2.3
Dyslipidemia	1.5	2.1	2.5
Constipation	1.5	2.2	1.9
Discomfort with urination	0.7	1.6	2.1
Pain in extremity	1.4	2.0	1.7

* Genital mycotic infections include the following adverse reactions, listed in order of frequency reported for females: vulvovaginal mycotic infection, vaginal infection, vulvovaginal candidiasis, vulvovaginitis, genital infection, genital candidiasis, fungal genital infection, vulvitis, genitourinary tract infection, vulval abscess, and vaginitis bacterial. (N for females: Placebo=677, dapagliflozin 5 mg=581, dapagliflozin 10 mg=598).

† Urinary tract infections include the following adverse reactions, listed in order of frequency reported: urinary tract infection, cystitis, *Escherichia* urinary tract infection, genitourinary tract infection, pyelonephritis, trigonitis, urethritis, kidney infection, and prostatitis.

‡ Increased urination includes the following adverse reactions, listed in order of frequency reported: pollakiuria, polyuria, and urine output increased.

§ Genital mycotic infections include the following adverse reactions, listed in order of frequency reported for males: balanitis, fungal genital infection, balanitis candida, genital candidiasis, genital infection male, penile infection, balanoposthitis, balanoposthitis infective, genital infection, and posthitis. (N for males: Placebo=716, dapagliflozin 5 mg=564, dapagliflozin 10 mg=595).

Pool of 13 Placebo-Controlled Adult Trials for Dapagliflozin 10 mg for Glycemic Control

Dapagliflozin 10 mg was also evaluated in a larger glycemic control placebo-controlled trial pool in adult patients. This pool combined 13 placebo-controlled trials, including 3 monotherapy trials, 9 add-on to background antidiabetic therapy trials, and an initial combination with metformin HCl trial. Across these 13 trials, 2360 patients were treated once daily with dapagliflozin 10 mg for a mean duration of exposure of 22 weeks. The mean age of the population was 59 years and 4% were older than 75 years. Fifty-eight percent (58%) of the population were male; 84% were White, 9% were Asian, and 3% were Black or African American. At baseline, the population had diabetes for an average of 9 years, had a mean HbA1c of 8.2%, and 30% had established microvascular disease. Baseline renal function was normal or mildly impaired in 88% of patients and moderately impaired in 11% of patients (mean eGFR 82 mL/min/1.73 m²).

Other Adverse Reactions with Dapagliflozin in Adults with Type 2 Diabetes Mellitus

Volume Depletion

Dapagliflozin causes an osmotic diuresis, which may lead to a reduction in intravascular volume. Adverse reactions related to volume depletion (including reports of dehydration, hypovolemia, orthostatic hypotension, or hypotension) for the 12-trial and 13-trial, short-term, placebo-controlled pools and for the DECLARE trial are shown in Table 4 [see *Warnings and Precautions (5.3)*].

Table 4: Adverse Reactions Related to Volume Depletion* in Adult Clinical Trials with Dapagliflozin

	Pool of 12 Placebo-Controlled Trials			Pool of 13 Placebo-Controlled Trials		DECLARE Trial	
	Placebo	Dapagliflozin 5 mg	Dapagliflozin 10 mg	Placebo	Dapagliflozin 10 mg	Placebo	Dapagliflozin 10 mg
Overall population N (%)	N=1393 5 (0.4%)	N=1145 7 (0.6%)	N=1193 9 (0.8%)	N=2295 17 (0.7%)	N=2360 27 (1.1%)	N=8569 207 (2.4%)	N=8574 213 (2.5%)
Patient Subgroup n (%)							
Patients on	n=55	n=40	n=31	n=267	n=236	n=934	n=866

loop diuretics	1 (1.8%)	0	3 (9.7%)	4 (1.5%)	6 (2.5%)	57 (6.1%)	57 (6.6%)
Patients with moderate renal impairment with eGFR ≥ 30 and < 60 mL/min/1.73 m ²	n=107 2 (1.9%)	n=107 1 (0.9%)	n=89 1 (1.1%)	n=268 4 (1.5%)	n=265 5 (1.9%)	n=658 30 (4.6%)	n=604 35 (5.8%)
Patients ≥ 65 years of age	n=276 1 (0.4%)	n=216 1 (0.5%)	n=204 3 (1.5%)	n=711 6 (0.8%)	n=665 11 (1.7%)	n=3950 121 (3.1%)	n=3948 117 (3.0%)

* Volume depletion includes reports of dehydration, hypovolemia, orthostatic hypotension, or hypotension.

Hypoglycemia

The frequency of hypoglycemia in adult patients by trial [see *Clinical Studies (14.1)*] is shown in Table 5. Hypoglycemia was more frequent when dapagliflozin was added to sulfonylurea or insulin [see *Warnings and Precautions (5.5)*].

Table 5: Incidence of Severe Hypoglycemia* and Hypoglycemia with Glucose < 54 mg/dL[†] in Controlled Glycemic Control Clinical Trials in Adults

	Placebo	Dapagliflozin 5 mg	Dapagliflozin 10 mg
Add-on to Metformin HCl (24 weeks)	N=137	N=137	N=135
Severe [n (%)]	0	0	0
Glucose < 54 mg/dL [n (%)]	0	0	0
Add-on to DPP4 inhibitor (with or without Metformin HCl) (24 weeks)	N=226	-	N=225
Severe [n (%)]	0	-	1 (0.4)
Glucose < 54 mg/dL [n (%)]	1 (0.4)	-	1 (0.4)
Add-on to Insulin with or without other OADs[‡] (24 weeks)	N=197	N=212	N=196
Severe [n (%)]	1 (0.5)	2 (0.9)	2 (1.0)
Glucose < 54 mg/dL [n (%)]	43 (21.8)	55 (25.9)	45 (23.0)

* Severe episodes of hypoglycemia were defined as episodes of severe impairment in consciousness or behavior, requiring external (third party) assistance, and with prompt recovery after intervention regardless of glucose level.

† Episodes of hypoglycemia with glucose < 54 mg/dL (3 mmol/L) were defined as reported episodes of hypoglycemia meeting the glucose criteria that did not also qualify as a severe episode.

‡ OAD = oral antidiabetic therapy.

In the DECLARE trial [see *Clinical Studies (14.3)*], severe events of hypoglycemia were reported in 58 (0.7%) out of 8574 adult patients treated with dapagliflozin 10 mg and 83 (1.0%) out of 8569 adult patients treated with placebo.

Genital Mycotic Infections

In the glycemic control trials in adults, genital mycotic infections were more frequent with dapagliflozin treatment. Genital mycotic infections were reported in 0.9% of patients on placebo, 5.7% on dapagliflozin 5 mg, and 4.8% on dapagliflozin 10 mg, in the 12-trial placebo-controlled pool. Discontinuation from trial due to genital infection occurred in 0% of placebo-treated patients and 0.2% of patients treated with dapagliflozin 10 mg. Infections were more frequently reported in females than in males (see Table 3). The most frequently reported genital mycotic infections were vulvovaginal mycotic infections in females and balanitis in males. Patients with a history of genital mycotic infections were more likely to have a genital mycotic infection during the trial than those with no prior history (10.0%, 23.1%, and 25.0% versus 0.8%, 5.9%, and 5.0% on placebo, dapagliflozin 5 mg, and dapagliflozin 10 mg, respectively). In the DECLARE trial [see *Clinical Studies (14.3)*], serious genital mycotic infections were reported in <0.1% of patients treated with dapagliflozin 10 mg and <0.1% of patients treated with placebo. Genital mycotic infections that caused trial drug discontinuation were reported in 0.9% of patients treated with dapagliflozin 10 mg and <0.1% of patients treated with placebo.

Hypersensitivity Reactions

Hypersensitivity reactions (e.g., angioedema, urticaria, hypersensitivity) were reported with dapagliflozin treatment. In glycemic control trials in adults, serious anaphylactic reactions and severe cutaneous adverse reactions and angioedema were reported in 0.2% of comparator-treated patients and 0.3% of dapagliflozin-treated patients. If hypersensitivity reactions occur, discontinue use of dapagliflozin; treat per standard of care and monitor until signs and symptoms resolve.

Ketoacidosis

In the DECLARE trial [see *Clinical Studies (14.3)*], events of diabetic ketoacidosis (DKA) were reported in 27 out of 8574 adult patients in the dapagliflozin-treated group and in 12 out of 8569 adult patients in the placebo group. The events were evenly distributed over the trial period.

Laboratory Tests in Adults with Type 2 Diabetes Mellitus treated with Dapagliflozin or Metformin HCl

Dapagliflozin

Increases in Serum Creatinine and Decreases in eGFR

Initiation of SGLT2 inhibitors, including dapagliflozin, causes a small increase in serum creatinine and decrease in eGFR. These changes in serum creatinine and eGFR generally occur within two weeks of starting therapy and then stabilize regardless of baseline kidney function. Changes that do not fit this pattern should prompt further evaluation to exclude the possibility of acute kidney injury [see *Warnings and Precautions (5.3)*]. In two trials that included adult patients with type 2 diabetes mellitus with moderate renal impairment, the acute effect on eGFR reversed after treatment discontinuation, suggesting acute hemodynamic changes may play a role in the renal function changes observed with dapagliflozin.

Increase in Hematocrit

In the pool of 13 placebo-controlled trials of glycemic control, increases from baseline in mean hematocrit values were observed in dapagliflozin-treated adult patients starting at Week 1 and continuing up to Week 16, when the maximum mean difference from baseline was observed. At Week 24, the mean changes from baseline in hematocrit were -0.33% in the placebo group and 2.30% in the dapagliflozin 10 mg group. By Week 24, hematocrit values >55% were reported in 0.4% of placebo-treated patients and 1.3% of dapagliflozin 10 mg-treated patients.

Increase in Low-Density Lipoprotein Cholesterol

In the pool of 13 placebo-controlled trials of glycemic control, changes from baseline in mean lipid values were reported in dapagliflozin-treated adult patients compared to placebo-treated patients. Mean percent changes from baseline at Week 24 were 0.0% versus 2.5% for total cholesterol, and -1.0% versus 2.9% for LDL cholesterol in the placebo and dapagliflozin 10 mg groups, respectively. In the DECLARE trial [see *Clinical Studies (14.3)*], mean changes from baseline after 4 years were 0.4 mg/dL versus -4.1 mg/dL for total cholesterol, and -2.5 mg/dL versus -4.4 mg/dL for LDL cholesterol, in dapagliflozin 10 mg-treated and the placebo groups, respectively.

Decrease in Serum Bicarbonate

In a trial of concomitant therapy of dapagliflozin 10 mg with exenatide extended release (on a background of metformin HCl) in adults, four patients (1.7%) on concomitant therapy had a serum bicarbonate value of less than or equal to 13 mEq/L compared to one each (0.4%) in the dapagliflozin and exenatide extended release treatment groups [see *Warning and Precautions (5.2)*].

Metformin HCl

Vitamin B₁₂ Concentrations

In metformin clinical trials of 29-week duration, a decrease to subnormal levels of previously normal serum vitamin B₁₂ levels was observed in approximately 7% of patients.

Clinical Trials in Pediatric Patients Aged 10 to 17 Years with Type 2 Diabetes Mellitus

Dapagliflozin

The dapagliflozin safety profile observed in the 26-week placebo-controlled clinical trial with a 26-week extension in 157 pediatric patients aged 10 years and older with type 2 diabetes mellitus was similar to that observed in adults [see *Clinical Studies (14.2)*].

Metformin HCl

In clinical trials with metformin HCl immediate-release tablets in pediatric patients with type 2 diabetes mellitus, the profile of adverse reactions was similar to that observed in adults.

6.2 Postmarketing Experience

Additional adverse reactions have been identified during post-approval use of XIGDUO XR, dapagliflozin or metformin HCl. Because these reactions are reported voluntarily from a population of uncertain size, it is generally not possible to reliably estimate their frequency or establish a causal relationship to drug exposure.

Dapagliflozin

Infections: Necrotizing fasciitis of the perineum (Fournier's Gangrene), urosepsis and pyelonephritis

Metabolism and Nutrition Disorders: Ketoacidosis

Renal and Urinary Disorders: Acute kidney injury

Skin and Subcutaneous Tissue Disorders: Rash

Metformin HCl

Hepatobiliary Disorders: Cholestatic, hepatocellular, and mixed hepatocellular liver injury

7 DRUG INTERACTIONS

Table 6: Clinically Relevant Interactions with XIGDUO XR

Carbonic Anhydrase Inhibitors	
<i>Clinical Impact</i>	Topiramate or other carbonic anhydrase inhibitors (e.g., zonisamide, acetazolamide or dichlorphenamide) frequently causes a decrease in serum bicarbonate and induce non-anion gap, hyperchloremic metabolic acidosis. Concomitant use of these drugs with XIGDUO XR may increase the risk for lactic acidosis.
<i>Intervention</i>	Consider more frequent monitoring of these patients.
Drugs that Reduce Metformin Clearance	
<i>Clinical Impact</i>	Concomitant use of drugs that interfere with common renal tubular transport systems involved in the renal elimination of metformin (e.g., organic cationic transporter-2 [OCT2]/multidrug and toxin extrusion [MATE] inhibitors, such as ranolazine, vandetanib, dolutegravir, and cimetidine) could increase systemic exposure to metformin and may increase the risk for lactic acidosis [see <i>Clinical Pharmacology (12.3)</i>].
<i>Intervention</i>	Consider the benefits and risks of concomitant use.
Alcohol	
<i>Clinical Impact</i>	Alcohol is known to potentiate the effect of metformin on lactate metabolism.
<i>Intervention</i>	Warn patients against excessive alcohol intake while receiving XIGDUO XR.
Insulin or Insulin Secretagogues	
<i>Clinical Impact</i>	The risk of hypoglycemia may be increased when XIGDUO XR is used concomitantly with insulin or insulin secretagogues (e.g., sulfonylurea) [see <i>Warnings and Precautions (5.5)</i>].
<i>Intervention</i>	Concomitant use may require lower doses of insulin or the insulin secretagogue to reduce the risk of hypoglycemia.
Drugs Affecting Glycemic Control	
<i>Clinical Impact</i>	Certain drugs tend to produce hyperglycemia and may lead to loss of glycemic control. These medications include thiazides and other diuretics, corticosteroids, phenothiazines, thyroid products, estrogens, oral contraceptives, phenytoin, nicotinic acid, sympathomimetics, calcium channel blocking drugs, and isoniazid.
<i>Intervention</i>	When such drugs are administered to a patient receiving XIGDUO XR, observe the patient closely for loss of blood glucose control. When such drugs are withdrawn from a patient receiving XIGDUO XR, observe the patient closely for hypoglycemia.
Lithium	
<i>Clinical Impact</i>	Concomitant use of an SGLT2 inhibitor with lithium may decrease serum lithium concentrations.
<i>Intervention</i>	Monitor serum lithium concentration more frequently during XIGDUO XR initiation and dosage changes.
Positive Urine Glucose Test	
<i>Clinical Impact</i>	SGLT2 inhibitors increase urinary glucose excretion and will lead to positive urine glucose tests.
<i>Intervention</i>	Monitoring glycemic control with urine glucose tests is not recommended in patients taking SGLT2 inhibitors. Use alternative methods to monitor glycemic control.

Interference with 1,5-anhydroglucitol (1,5-AG) Assay

<i>Clinical Impact</i>	Measurements of 1,5-AG are unreliable in assessing glycemic control in patients taking SGLT2 inhibitors.
<i>Intervention</i>	Monitoring glycemic control with 1,5-AG assay is not recommended. Use alternative methods to monitor glycemic control.

8 USE IN SPECIFIC POPULATIONS

8.1 Pregnancy

Risk Summary

Based on animal data showing adverse renal effects, XIGDUO XR is not recommended during the second and third trimesters of pregnancy.

Limited data with XIGDUO XR or dapagliflozin in pregnant women are not sufficient to determine drug-associated risk for major birth defects or miscarriage. Published studies with metformin use during pregnancy have not reported a clear association with metformin and major birth defect or miscarriage risk (*see Data*). There are risks to the mother and fetus associated with poorly controlled diabetes in pregnancy (*see Clinical Considerations*).

In animal studies, adverse renal pelvic and tubule dilatations, that were not fully reversible, were observed in rats when dapagliflozin was administered during a period of renal development corresponding to the late second and third trimesters of human pregnancy, at all doses tested; the lowest of which provided an exposure 15-times the 10 mg clinical dose (*see Data*).

The estimated background risk of major birth defects is 6 to 10% in women with pre-gestational diabetes with a HbA1c greater than 7% and has been reported to be as high as 20 to 25% in women with HbA1c greater than 10%. The estimated background risk of miscarriage for the indicated population is unknown. In the U.S. general population, the estimated background risk of major birth defects and miscarriage in clinically recognized pregnancies is 2 to 4% and 15 to 20%, respectively.

Clinical Considerations

Disease-associated maternal and/or embryofetal risk

Poorly controlled diabetes in pregnancy increases the maternal risk for diabetic ketoacidosis, preeclampsia, spontaneous abortions, preterm delivery and delivery complications. Poorly controlled diabetes increases the fetal risk for major birth defects, stillbirth, and macrosomia related morbidity.

Data

Human Data

Published data from post-marketing studies have not reported a clear association with metformin and major birth defects, miscarriage, or adverse maternal or fetal outcomes when metformin was used during pregnancy. However, these studies cannot definitely establish the absence of any metformin-associated risk because of methodological limitations, including small sample size and inconsistent comparator groups.

Animal Data

Dapagliflozin

Dapagliflozin dosed directly to juvenile rats from postnatal day (PND) 21 until PND 90 at

doses of 1, 15, or 75 mg/kg/day, increased kidney weights and increased the incidence of renal pelvic and tubular dilatations at all dose levels. Exposure at the lowest dose tested was 15-times the 10 mg clinical dose (based on AUC). The renal pelvic and tubular dilatations observed in juvenile animals did not fully reverse within a 1-month recovery period.

In a prenatal and postnatal development study, dapagliflozin was administered to maternal rats from gestation day 6 through lactation day 21 at doses of 1, 15, or 75 mg/kg/day, and pups were indirectly exposed *in utero* and throughout lactation. Increased incidence or severity of renal pelvic dilatation was observed in 21-day-old pups offspring of treated dams at 75 mg/kg/day (maternal and pup dapagliflozin exposures were 1415-times and 137-times, respectively, the human values at the 10 mg clinical dose, based on AUC). Dose-related reductions in pup body weights were observed at greater or equal to 29-times the 10 mg clinical dose (based on AUC). No adverse effects on developmental endpoints were noted at 1 mg/kg/day (19-times the 10 mg clinical dose, based on AUC). These outcomes occurred with drug exposure during periods of renal development in rats that corresponds to the late second and third trimester of human development.

In embryofetal development studies in rats and rabbits, dapagliflozin was administered throughout organogenesis, corresponding to the first trimester of human pregnancy. In rats, dapagliflozin was neither embryo-lethal nor teratogenic at doses up to 75 mg/kg/day (1441-times the 10 mg clinical dose, based on AUC). Dose-related effects on the rat fetus (structural abnormalities and reduced body weight) occurred only at higher dosages, equal to or greater than 150 mg/kg (more than 2344-times the 10 mg clinical dose, based on AUC), which were associated with maternal toxicity. No developmental toxicities were observed in rabbits at doses up to 180 mg/kg/day (1191-times the 10 mg clinical dose, based on AUC).

Metformin HCl

Metformin HCl did not cause adverse developmental effects when administered to pregnant Sprague Dawley rats and rabbits up to 600 mg/kg/day during the period of organogenesis. This represents an exposure of about 2- and 6-times a 2,000 mg clinical dose based on body surface area (mg/m²) for rats and rabbits, respectively. Determination of fetal concentrations demonstrated a partial placental barrier to metformin.

8.2 Lactation

Risk Summary

There is no information regarding the presence of XIGDUO XR or dapagliflozin in human milk, the effects on the breastfed infant, or the effects on milk production.

Limited published studies report that metformin is present in human milk (*see Data*). However, there is insufficient information on the effects of metformin on the breastfed infant and no available information on the effects of metformin on milk production. Dapagliflozin is present in the milk of lactating rats (*see Data*). However, due to species specific differences in lactation physiology, the clinical relevance of these data is not clear. Since human kidney maturation occurs *in utero* and during the first 2 years of life when lactational exposure may occur, there may be risk to the developing human kidney.

Because of the potential for serious adverse reactions in breastfed infants, advise women that use of XIGDUO XR is not recommended while breastfeeding.

Data

Dapagliflozin

Dapagliflozin was present in rat milk at a milk/plasma ratio of 0.49, indicating that dapagliflozin and its metabolites are transferred into milk at a concentration that is approximately 50% of that in maternal plasma. Juvenile rats directly exposed to dapagliflozin showed risk to the developing kidney (renal pelvic and tubular dilatations) during maturation.

Metformin HCl

Published clinical lactation studies report that metformin is present in human milk which resulted in infant doses approximately 0.11% to 1% of the maternal weight-adjusted dosage and a milk/plasma ratio ranging between 0.13 and 1. However, the studies were not designed to definitely establish the risk of use of metformin during lactation because of small sample size and limited adverse event data collected in infants.

8.3 Females and Males of Reproductive Potential

Discuss the potential for unintended pregnancy with premenopausal women as therapy with metformin may result in ovulation in some anovulatory women.

8.4 Pediatric Use

The safety and effectiveness of XIGDUO XR as an adjunct to diet and exercise to improve glycemic control in type 2 diabetes mellitus have been established in pediatric patients aged 10 years and older.

Use of XIGDUO XR for this indication is supported by a 26-week placebo-controlled trial of dapagliflozin with a 26-week extension in 157 pediatric patients aged 10 to 17 years with type 2 diabetes mellitus, pediatric pharmacokinetic data, and trials in adults with type 2 diabetes mellitus [see *Clinical Pharmacology (12.3)* and *Clinical Studies (14.1, 14.2)*]. The safety profile observed in the placebo-controlled trial of dapagliflozin in pediatric patients with type 2 diabetes mellitus was similar to that observed in adults [see *Adverse Reactions (6.1)*].

The use of XIGDUO XR for this indication is also supported by evidence from adequate and well-controlled trials of metformin HCl immediate-release tablets in adults with additional data from a controlled clinical trial using metformin HCl immediate-release tablets in pediatric patients 10 to 16 years old with type 2 diabetes mellitus, and pharmacokinetic data with metformin HCl extended-release tablets in adults [see *Clinical Pharmacology (12.3)* and *Clinical Studies (14.1, 14.2)*]. In the clinical trial with pediatric patients receiving metformin HCl immediate-release tablets, adverse reactions with metformin HCl immediate-release tablets were similar to those described in adults [see *Adverse Reactions (6.1)*].

The safety and effectiveness of XIGDUO XR for glycemic control in patients with type 2 diabetes mellitus have not been established in pediatric patients less than 10 years of age.

The safety and effectiveness of XIGDUO XR have not been established in pediatric patients to reduce the risk of [see *Indications and Usage (1)*]:

- sustained eGFR decline, end stage kidney disease, cardiovascular death, and hospitalization for heart failure in patients with chronic kidney disease at risk of progression.
- cardiovascular death, hospitalization for heart failure, and urgent heart failure visit in patients with heart failure.

- hospitalization for heart failure in patients with type 2 diabetes mellitus and either established cardiovascular disease (CVD) or multiple cardiovascular (CV) risk factors.

8.5 Geriatric Use

XIGDUO XR

No XIGDUO XR dosage change is recommended based on age. More frequent assessment of renal function is recommended in elderly patients.

Dapagliflozin

A total of 1424 (24%) of the 5936 dapagliflozin-treated patients were 65 years and older and 207 (3.5%) patients were 75 years and older in a pool of 21 double-blind, controlled, clinical trials assessing the efficacy of dapagliflozin in improving glycemic control. After controlling for level of renal function (eGFR), efficacy was similar for patients under age 65 years and those 65 years and older. In patients ≥ 65 years of age, a higher proportion of patients treated with dapagliflozin for glycemic control had adverse reactions of hypotension [see *Warnings and Precautions (5.3) and Adverse Reactions (6.1)*].

In the DAPA-HF, DELIVER and DAPA-CKD trials, safety and efficacy were similar for patients aged 65 years and younger and those older than 65 in both the overall population and in the patients with type 2 diabetes mellitus. In the DAPA HF trial, 2714 (57%) out of 4744 patients with heart failure with reduced ejection fraction (HFrEF) were older than 65 years. Out of 2139 patients with HFrEF and type 2 diabetes mellitus, 1211 (57%) were older than 65 years. In the DELIVER trial, 4759 (76%) out of 6263 patients with heart failure (LVEF $>40\%$) were older than 65 years. Out of 2806 patients with LVEF $>40\%$ and type 2 diabetes mellitus, 2072 (74%) were older than 65 years. In the DAPA-CKD trial, 1818 (42%) out of 4304 patients with chronic kidney disease were older than 65 years. Out of 2906 patients with chronic kidney disease and type 2 diabetes mellitus, 1399 (48%) were older than 65 years.

Metformin HCl

Controlled clinical trials of metformin did not include sufficient numbers of elderly patients to determine whether they respond differently than younger patients. In general, dosage selection for an elderly patient should be cautious, usually starting at the low end of the dosing range, reflecting the greater frequency of decreased hepatic, renal, or cardiac function, and of concomitant disease or other drug therapy and the higher risk of lactic acidosis. Assess renal function more frequently in elderly patients [see *Warnings and Precautions (5.1)*].

8.6 Renal Impairment

Initiation of XIGDUO XR is not recommended in patients with an eGFR below 45 mL/min/1.73 m² and is contraindicated in patients with severe renal impairment (eGFR less than 30 mL/min/1.73 m²) or end-stage renal disease [see *Dosage and Administration (2.4), Contraindications (4) and Warnings and Precautions (5.1, 5.3)*].

Dapagliflozin

Dapagliflozin 10 mg was evaluated in 4304 adult patients with chronic kidney disease (eGFR 25 to 75 mL/min/1.73 m²) in the DAPA-CKD trial. Dapagliflozin 10 mg was also evaluated in 1926 adult patients with an eGFR of 30 to 60 mL/min/1.73 m² in the DAPA-HF trial. The safety profile of dapagliflozin across eGFR subgroups was consistent with the known safety profile [see *Adverse Reactions (6.1) and Clinical Studies (14.4 and*

14.5)].

Dapagliflozin 10 mg was evaluated in two glycemic control trials that included adult patients with moderate renal impairment (an eGFR of 45 to less than 60 mL/min/1.73 m², and an eGFR of 30 to less than 60 mL/min/1.73 m²) [see *Clinical Studies (14.1)*]. Patients with diabetes and renal impairment using dapagliflozin 10 mg are more likely to experience hypotension and may be at higher risk for acute kidney injury secondary to volume depletion. In the trial of adult patients with an eGFR 30 to less than 60 mL/min/1.73 m², 13 patients receiving dapagliflozin experienced bone fractures compared to none receiving placebo. Use of dapagliflozin 10 mg for glycemic control in patients without established CV disease or CV risk factors is not recommended when eGFR is less than 45 mL/min/1.73 m² [see *Dosage and Administration (2.4)*].

Metformin HCl

Metformin is substantially excreted by the kidney, and the risk of metformin accumulation and lactic acidosis increases with the degree of renal impairment. XIGDUO XR is contraindicated in severe renal impairment, patients with an estimated glomerular filtration rate (eGFR) below 30 mL/min/1.73 m² [see *Dosage and Administration (2.4)*, *Contraindications (4)*, *Warnings and Precautions (5.1)*, and *Clinical Pharmacology (12.3)*].

8.7 Hepatic Impairment

Use of metformin in patients with hepatic impairment has been associated with some cases of lactic acidosis. XIGDUO XR is not recommended in patients with hepatic impairment [see *Warnings and Precautions (5.1)*].

10 OVERDOSAGE

Dapagliflozin

In the event of an overdose, consider contacting the Poison Help line (1-800-222-1222) or a medical toxicologist for additional overdosage management recommendations. The removal of dapagliflozin by hemodialysis has not been studied.

Metformin HCl

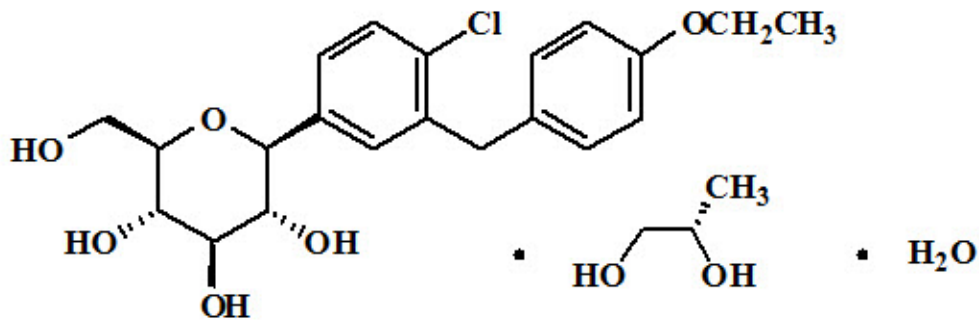
Overdose of metformin HCl has occurred, including ingestion of amounts >50 grams. Lactic acidosis has been reported in approximately 32% of metformin overdose cases [see *Warnings and Precautions (5.1)*]. Metformin is dialyzable with a clearance of up to 170 mL/min under good hemodynamic conditions. Therefore, hemodialysis may be useful for removal of accumulated drug from patients in whom metformin overdosage is suspected.

11 DESCRIPTION

XIGDUO XR tablets contain: dapagliflozin, a SGLT2 inhibitor, and metformin HCl, a biguanide.

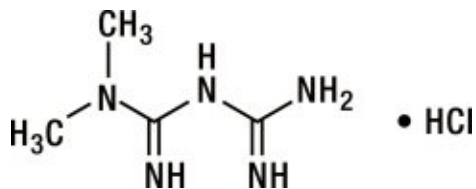
Dapagliflozin

Dapagliflozin is described chemically as D-glucitol, 1,5-anhydro-1-C-[4-chloro-3-[(4-ethoxyphenyl)methyl]phenyl]-, (1S)-, compounded with (2S)-1,2-propanediol, hydrate (1:1:1). The empirical formula is C₂₁H₂₅ClO₆•C₃H₈O₂•H₂O and the formula weight is 502.98. The structural formula is:



Metformin HCl

Metformin HCl (N,N-dimethylimidodicarbonimidic diamide HCl) is a white to off-white crystalline compound with a molecular formula of $C_4H_{11}N_5 \cdot HCl$ and a molecular weight of 165.63. Metformin HCl is freely soluble in water, slightly soluble in alcohol, and is practically insoluble in acetone, ether, and chloroform. The pK_a of metformin is 12.4. The pH of a 1% aqueous solution of metformin HCl is 6.68. The structural formula is:



XIGDUO XR

XIGDUO XR is available for oral administration as tablets containing the equivalent of 2.5 mg dapagliflozin as dapagliflozin propanediol and 1,000 mg metformin HCl which is equivalent to 779.86 mg metformin base (XIGDUO XR 2.5 mg/1,000 mg), 5 mg dapagliflozin as dapagliflozin propanediol and 500 mg metformin HCl which is equivalent to 389.9 mg metformin base (XIGDUO XR 5 mg/500 mg), the equivalent of 5 mg dapagliflozin as dapagliflozin propanediol and 1,000 mg metformin HCl which is equivalent to 779.86 mg metformin base (XIGDUO XR 5 mg/1,000 mg), the equivalent of 10 mg dapagliflozin as dapagliflozin propanediol and 500 mg metformin HCl which is equivalent to 389.9 mg metformin base (XIGDUO XR 10 mg/500 mg), or the equivalent of 10 mg dapagliflozin as dapagliflozin propanediol and 1,000 mg metformin HCl which is equivalent to 779.86 mg metformin base (XIGDUO XR 10 mg/1,000 mg).

Each film-coated tablet of XIGDUO XR contains the following inactive ingredients: anhydrous lactose, carboxymethylcellulose sodium, crospovidone, hypromellose, magnesium stearate, microcrystalline cellulose, and silicon dioxide.

The film coatings contain the following inactive ingredients: polyethylene glycol, polyvinyl alcohol, talc, and titanium dioxide. Additionally, the film coating for the XIGDUO XR 5 mg/500 mg tablets contains FD&C Yellow No. 6/Sunset Yellow FCF aluminum lake. The film coating for the XIGDUO XR 2.5 mg/1,000 mg, 5 mg/1,000 mg, 10 mg/500 mg, and 10 mg/1,000 mg tablets contains iron oxides.

12 CLINICAL PHARMACOLOGY

12.1 Mechanism of Action

Dapagliflozin

Sodium-glucose cotransporter 2 (SGLT2), expressed in the proximal renal tubules, is responsible for the majority of the reabsorption of filtered glucose from the tubular lumen. Dapagliflozin is an inhibitor of SGLT2. By inhibiting SGLT2, dapagliflozin reduces reabsorption of filtered glucose, and thereby promotes urinary glucose excretion.

Dapagliflozin also reduces sodium reabsorption and increases the delivery of sodium to the distal tubule. This may influence several physiological functions including, but not restricted to, lowering both pre- and afterload of the heart and downregulation of sympathetic activity, and decreased intraglomerular pressure which is believed to be mediated by increased tubuloglomerular feedback.

Metformin HCl

Metformin is an antihyperglycemic agent which improves glucose tolerance in patients with type 2 diabetes mellitus, lowering both basal and postprandial plasma glucose. Metformin decreases hepatic glucose production, decreases intestinal absorption of glucose, and improves insulin sensitivity by increasing peripheral glucose uptake and utilization. With metformin therapy, insulin secretion remains unchanged while fasting insulin levels and day-long plasma insulin response may decrease.

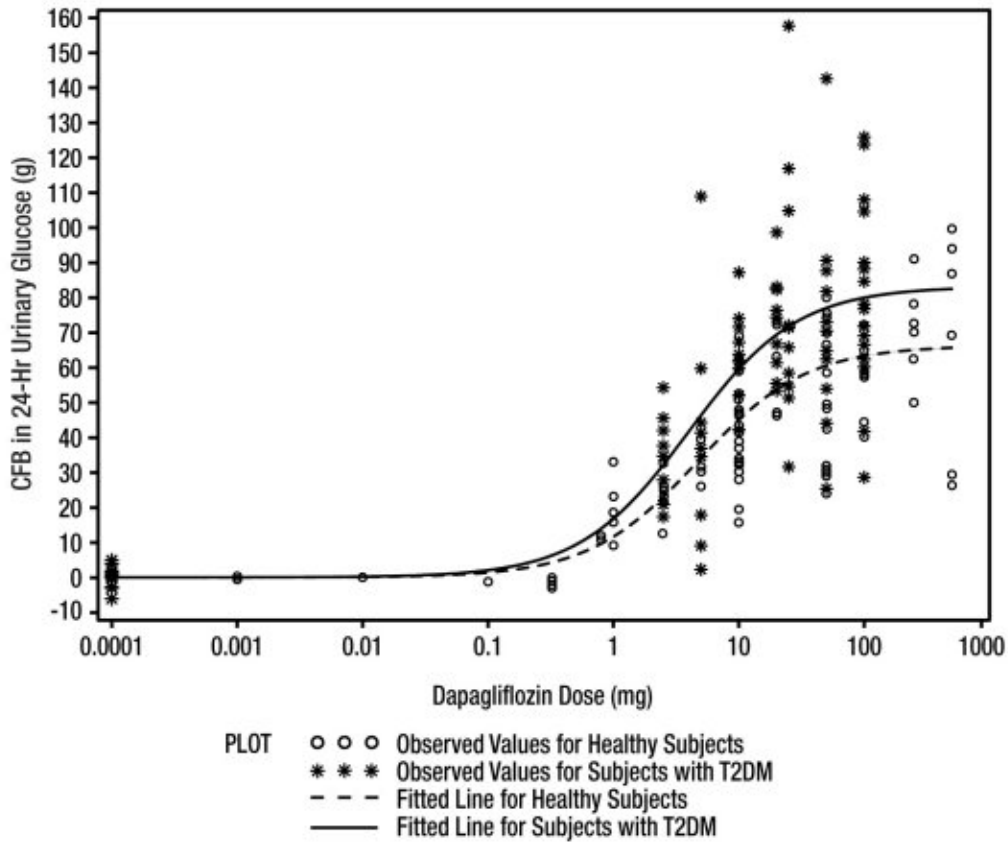
12.2 Pharmacodynamics

General

Dapagliflozin

Increases in the amount of glucose excreted in the urine were observed in healthy subjects and in patients with type 2 diabetes mellitus following the administration of dapagliflozin (see Figure 1). Dapagliflozin doses of 5 or 10 mg per day in patients with type 2 diabetes mellitus for 12 weeks resulted in excretion of approximately 70 grams of glucose in the urine per day. A near maximum glucose excretion was observed at the dapagliflozin daily dosage of 20 mg. This urinary glucose excretion with dapagliflozin also results in increases in urinary volume [see *Adverse Reactions (6.1)*]. After discontinuation of dapagliflozin, on average, the elevation in urinary glucose excretion approaches baseline by about 3 days for the 10 mg dosage.

Figure 1: Scatter Plot and Fitted Line of Change from Baseline in 24-Hour Urinary Glucose Amount versus Dapagliflozin Dose in Healthy Subjects and Subjects with Type 2 Diabetes Mellitus (T2DM) (Semi-Log Plot)



Cardiac Electrophysiology

Dapagliflozin was not associated with clinically meaningful prolongation of QTc interval at daily doses up to 150 mg (15-times the recommended maximum dose) in a study of healthy subjects. In addition, no clinically meaningful effect on QTc interval was observed following single doses of up to 500 mg (50-times the recommended maximum dose) of dapagliflozin in healthy subjects.

12.3 Pharmacokinetics

XIGDUO XR

The administration of XIGDUO XR in healthy subjects after a standard meal compared to the fasted state resulted in the same extent of exposure for both dapagliflozin and metformin extended-release. Compared to the fasted state, the standard meal resulted in 35% reduction and a delay of 1 to 2 hours in the peak plasma concentrations of dapagliflozin. This effect of food is not considered to be clinically meaningful. Food has no relevant effect on the pharmacokinetics of metformin when administered as XIGDUO XR combination tablets.

Absorption

Dapagliflozin

Following oral administration of dapagliflozin, the maximum plasma concentration (C_{max}) is usually attained within 2 hours under fasting state. The C_{max} and AUC values increase dose proportionally with increase in dapagliflozin dose in the therapeutic dose range. The absolute oral bioavailability of dapagliflozin following the administration of a 10 mg dose is 78%. Administration of dapagliflozin with a high-fat meal decreases its C_{max} by up to

50% and prolongs T_{max} by approximately 1 hour but does not alter AUC as compared with the fasted state. These changes are not considered to be clinically meaningful and dapagliflozin can be administered with or without food.

Metformin HCl

Following a single oral dose of metformin HCl extended-release, C_{max} is achieved with a median value of 7 hours and a range of 4 to 8 hours. The extent of metformin absorption (as measured by AUC) from the metformin HCl extended-release tablet increased by approximately 50% when given with food. There was no effect of food on C_{max} and T_{max} of metformin. Metformin HCl extended-release tablets and metformin HCl immediate-release tablets have a similar extent of absorption (as measured by AUC), while peak plasma levels of metformin extended-release tablets are approximately 20% lower than those of metformin immediate-release tablets at the same dose.

Distribution

Dapagliflozin

Dapagliflozin is approximately 91% protein bound. Protein binding is not altered in patients with renal or hepatic impairment.

Metformin HCl

Distribution studies with extended-release metformin have not been conducted; however, the apparent volume of distribution (V/F) of metformin following single oral doses of immediate-release metformin 850 mg averaged 654 ± 358 L. Metformin is negligibly bound to plasma proteins, in contrast to sulfonylureas, which are more than 90% protein bound. Metformin partitions into erythrocytes.

Metabolism

Dapagliflozin

The metabolism of dapagliflozin is primarily mediated by UGT1A9; CYP-mediated metabolism is a minor clearance pathway in humans. Dapagliflozin is extensively metabolized, primarily to yield dapagliflozin 3-O-glucuronide, which is an inactive metabolite. Dapagliflozin 3-O-glucuronide accounted for 61% of a 50 mg [14 C]-dapagliflozin dose and is the predominant drug-related component in human plasma.

Metformin HCl

Intravenous single-dose studies in healthy subjects demonstrate that metformin is excreted unchanged in the urine and does not undergo hepatic metabolism (no metabolites have been identified in humans) or biliary excretion.

Metabolism studies with extended-release metformin tablets have not been conducted.

Elimination

Dapagliflozin

Dapagliflozin and related metabolites are primarily eliminated via the renal pathway. Following a single 50 mg dose of [14 C]-dapagliflozin, 75% and 21% total radioactivity is excreted in urine and feces, respectively. In urine, less than 2% of the dose is excreted as parent drug. In feces, approximately 15% of the dose is excreted as parent drug. The mean plasma terminal half-life ($t_{1/2}$) for dapagliflozin is approximately 12.9 hours following a single oral dose of dapagliflozin 10 mg.

Metformin HCl

Renal clearance is approximately 3.5-times greater than creatinine clearance, which

indicates that tubular secretion is the major route of metformin elimination. Following oral administration, approximately 90% of the absorbed drug is eliminated via the renal route within the first 24 hours, with a plasma elimination half-life of approximately 6.2 hours. In blood, the elimination half-life is approximately 17.6 hours, suggesting that the erythrocyte mass may be a compartment of distribution.

Specific Populations

Geriatric Patients

Dapagliflozin

Based on a population pharmacokinetic analysis, age does not have a clinically meaningful effect on systemic exposures of dapagliflozin.

Metformin HCl

Limited data from controlled pharmacokinetic studies of metformin in healthy elderly subjects suggest that total plasma clearance of metformin is decreased, the half-life is prolonged, and C_{max} is increased, compared to healthy young subjects. From these data, it appears that the change in metformin pharmacokinetics with aging is primarily accounted for by a change in renal function.

Pediatric Patients

Dapagliflozin

The pharmacokinetics and pharmacodynamics (glucosuria) of dapagliflozin in pediatric patients aged 10 to 17 years with type 2 diabetes mellitus were similar to those observed in adult patients with same renal function.

Metformin HCl

After administration of a single oral metformin 500 mg tablet with food, geometric mean metformin C_{max} and AUC differed less than 5% between pediatric type 2 diabetic patients (12-16 years of age) and gender- and weight-matched healthy adults (20-45 years of age), all with normal renal function.

Male and Female Patients

Dapagliflozin

Based on a population pharmacokinetic analysis, gender does not have a clinically meaningful effect on systemic exposures of dapagliflozin.

Metformin HCl

Metformin pharmacokinetic parameters did not differ significantly between healthy subjects and patients with type 2 diabetes mellitus when analyzed according to gender (males=19, females=16). Similarly, in controlled clinical studies in patients with type 2 diabetes mellitus, the antihyperglycemic effect of metformin was comparable in males and females.

Racial or Ethnic Groups

Dapagliflozin

Based on a population pharmacokinetic analysis, race (White, Black or African American, or Asian) does not have a clinically meaningful effect on systemic exposures of dapagliflozin.

Metformin HCl

No studies of metformin pharmacokinetic parameters according to race have been performed. In controlled clinical studies of metformin in patients with type 2 diabetes mellitus, the antihyperglycemic effect was comparable in Whites (n=249), Black or African Americans (n=51), and Hispanic or Latino Ethnicity (n=24).

Patients with Renal Impairment

Dapagliflozin

At steady-state (20 mg once daily dapagliflozin for 7 days), adult patients with type 2 diabetes mellitus with mild, moderate, or severe renal impairment (as determined by eGFR) had geometric mean systemic exposures of dapagliflozin that were 45%, 100% and 200% higher, respectively, as compared to patients with type 2 diabetes mellitus with normal renal function. Higher systemic exposure of dapagliflozin in patients with type 2 diabetes mellitus with renal impairment did not result in a correspondingly higher 24-hour urinary glucose excretion. The steady-state 24-hour urinary glucose excretion in patients with type 2 diabetes mellitus and mild, moderate, and severe renal impairment was 42%, 80%, and 90% lower, respectively, than in patients with type 2 diabetes mellitus with normal renal function. The impact of hemodialysis on dapagliflozin exposure is not known [see *Dosage and Administration (2.4)*, *Warnings and Precautions (5.3)*, *Use in Specific Populations (8.6)* and *Clinical Studies (14)*].

Metformin HCl

In patients with decreased renal function, the plasma and blood half-life of metformin is prolonged and the renal clearance is decreased [see *Contraindications (4)* and *Warnings and Precautions (5.1)*].

Patients with Hepatic Impairment

Dapagliflozin

In adult patients with mild and moderate hepatic impairment (Child-Pugh classes A and B), mean C_{max} and AUC of dapagliflozin were up to 12% and 36% higher, respectively, as compared to healthy matched control subjects following single-dose administration of 10 mg dapagliflozin. These differences were not considered to be clinically meaningful. In adult patients with severe hepatic impairment (Child-Pugh class C), mean C_{max} and AUC of dapagliflozin were up to 40% and 67% higher, respectively, as compared to healthy matched controls.

Metformin HCl

No pharmacokinetic studies of metformin have been conducted in patients with hepatic impairment [see *Warnings and Precautions (5.1)*].

Body Weight

Dapagliflozin

Based on a population pharmacokinetic analysis, body weight does not have a clinically meaningful effect on systemic exposures of dapagliflozin.

Drug Interactions

Specific pharmacokinetic drug interaction studies with XIGDUO XR have not been performed, although such studies have been conducted with the individual dapagliflozin and metformin components.

In Vitro Assessment of Drug Interactions

Dapagliflozin

In *in vitro* studies, dapagliflozin and dapagliflozin 3-O-glucuronide neither inhibited CYP 1A2, 2C9, 2C19, 2D6, or 3A4, nor induced CYP 1A2, 2B6, or 3A4. Dapagliflozin is a weak substrate of the P-glycoprotein (P-gp) active transporter, and dapagliflozin 3-O-glucuronide is a substrate for the OAT3 active transporter. Dapagliflozin or dapagliflozin 3-O-glucuronide did not meaningfully inhibit P-gp, OCT2, OAT1, or OAT3 active transporters. Overall, dapagliflozin is unlikely to affect the pharmacokinetics of concurrently administered medications that are P-gp, OCT2, OAT1, or OAT3 substrates.

Effects of Other Drugs on Metformin

Table 7 shows the effect of coadministered drugs on the pharmacokinetics of metformin in adults.

Table 7: Effect of Coadministered Drug on Plasma Metformin Systemic Exposure

Coadministered Drug (Dose Regimen)*	Metformin (Dose Regimen)*	Metformin	
		Change [†] in AUC [‡]	Change [†] in C _{max}
No dosing adjustments required for the following:			
Glyburide (5 mg)	850 mg	↓9% [§]	↓7% [§]
Furosemide (40 mg)	850 mg	↑15% [§]	↑22% [§]
Nifedipine (10 mg)	850 mg	↑9%	↑20%
Propranolol (40 mg)	850 mg	↓10%	↓6%
Ibuprofen (400 mg)	850 mg	↑5% [§]	↑7% [§]
Drugs eliminated by renal tubular secretion may increase the accumulation of metformin [see Drug Interactions (7)].			
Cimetidine (400 mg)	850 mg	↑40%	↑60%

* All metformin and coadministered drugs were given as single doses.

† Percent change (with/without coadministered drug and no change = 0%); ↑ and ↓ indicate the exposure increase and decrease, respectively.

‡ AUC = AUC(INF).

§ Ratio of arithmetic means.

Effects of Metformin on Other Drugs

Table 8 shows the effect of metformin on the pharmacokinetics of coadministered drugs in adults.

Table 8: Effect of Metformin on Coadministered Drug Systemic Exposure

Coadministered Drug (Dose Regimen)*	Metformin (Dose Regimen)*	Coadministered Drug	
		Change [†] in AUC [‡]	Change [†] in C _{max}
No dosing adjustments required for the following:			
Glyburide (5 mg)	850 mg	↓22% [§]	↓37% [§]
Furosemide (40 mg)	850 mg	↓12% [§]	↓31% [§]
Nifedipine (10 mg)	850 mg	↑10% [¶]	↑8%
Propranolol (40 mg)	850 mg	↑1% [¶]	↑2%
Ibuprofen (400 mg)	850 mg	↓3% [#]	↑1% [#]
Cimetidine (400 mg)	850 mg	↓5% [¶]	↑1%

* All metformin and coadministered drugs were given as single doses.

† Percent change (with/without coadministered drug and no change = 0%); ↑ and ↓ indicate the exposure increase and decrease, respectively.

- ‡ AUC = AUC(INF) unless otherwise noted.
 § Ratio of arithmetic means, p-value of difference <0.05.
 ¶ AUC(0-24 hr) reported.
 # Ratio of arithmetic means.

Effects of Other Drugs on Dapagliflozin

Table 9 shows the effect of coadministered drugs on the pharmacokinetics of dapagliflozin in adults. No dose adjustments are recommended for dapagliflozin.

Table 9: Effects of Coadministered Drugs on Dapagliflozin Systemic Exposure

Coadministered Drug (Dose Regimen)*	Dapagliflozin (Dose Regimen)*	Dapagliflozin	
		Change [†] in AUC [‡]	Change [†] in C _{max}
No dosing adjustments required for the following:			
Oral Antidiabetic Agents			
Metformin (1,000 mg)	20 mg	↓ 1%	↓ 7%
Pioglitazone (45 mg)	50 mg	0%	↑ 9%
Sitagliptin (100 mg)	20 mg	↑ 8%	↓ 4%
Glimepiride (4 mg)	20 mg	↓ 1%	↑ 1%
Voglibose (0.2 mg three times daily)	10 mg	↑ 1%	↑ 4%
Other Medications			
Hydrochlorothiazide (25 mg)	50 mg	↑ 7%	↓ 1%
Bumetanide (1 mg)	10 mg once daily for 7 days	↑ 5%	↑ 8%
Valsartan (320 mg)	20 mg	↑ 2%	↓ 12%
Simvastatin (40 mg)	20 mg	↓ 1%	↓ 2%
Anti-infective Agent			
Rifampin (600 mg once daily for 6 days)	10 mg	↓ 22%	↓ 7%
Nonsteroidal Anti-inflammatory Agent			
Mefenamic Acid (loading dose of 500 mg followed by 14 doses of 250 mg every 6 hours)	10 mg	↑ 51%	↑ 13%

* Single dose unless otherwise noted.

† Percent change (with/without coadministered drug and no change = 0%); ↑ and ↓ indicate the exposure increase and decrease, respectively.

‡ AUC = AUC(INF) for drugs given as single dose and AUC = AUC(TAU) for drugs given in multiple doses.

Effects of Dapagliflozin on Other Drugs

Table 10 shows the effect of dapagliflozin on other coadministered drugs in adults. Dapagliflozin did not meaningfully affect the pharmacokinetics of the coadministered drugs.

Table 10: Effects of Dapagliflozin on the Systemic Exposures of Coadministered Drugs

Coadministered Drug (Dose Regimen)*	Dapagliflozin (Dose Regimen)*	Coadministered Drug	
		Change [†] in AUC [‡]	Change [†] in C _{max}
No dosing adjustments required for the following:			
Oral Antidiabetic Agents			
Metformin (1,000 mg)	20 mg	0%	↓5%
Pioglitazone (45 mg)	50 mg	0%	↓7%
Sitagliptin (100 mg)	20 mg	↑1%	↓11%
Glimepiride (4 mg)	20 mg	↑13%	↑4%
Other Medications			
Hydrochlorothiazide (25 mg)	50 mg	↓1%	↓5%
Bumetanide (1 mg)	10 mg once daily for 7 days	↑13%	↑13%
Valsartan (320 mg)	20 mg	↑5%	↓6%
Simvastatin (40 mg)	20 mg	↑19%	↓6%
Digoxin (0.25 mg)	20 mg loading dose then 10 mg once daily for 7 days	0%	↓1%
Warfarin (25 mg) S-warfarin R-warfarin	20 mg loading dose then 10 mg once daily for 7 days	↑3% ↑6%	↑7% ↑8%

* Single dose unless otherwise noted.

† Percent change (with/without coadministered drug and no change = 0%); ↑ and ↓ indicate the exposure increase and decrease, respectively.

‡ AUC = AUC(INF) for drugs given as single dose and AUC = AUC(TAU) for drugs given in multiple doses.

13 NONCLINICAL TOXICOLOGY

13.1 Carcinogenesis, Mutagenesis, Impairment of Fertility

XIGDUO XR

No animal studies have been conducted with XIGDUO XR to evaluate carcinogenesis, mutagenesis, or impairment of fertility. The following data are based on the findings in the studies with dapagliflozin and metformin individually.

Dapagliflozin

Dapagliflozin did not induce tumors in either mice or rats at any of the doses evaluated in 2-year carcinogenicity studies. Oral doses in mice consisted of 5, 15, and 40 mg/kg/day in males and 2, 10 and 20 mg/kg/day in females, and oral doses in rats were 0.5, 2, and 10 mg/kg/day for both males and females. The highest doses evaluated in mice were approximately 72-times (males) and 105-times (females) the clinical dose of 10 mg per day, based on AUC exposure. In rats, the highest dose was approximately 131-times (males) and 186-times (females) the clinical dose of 10 mg per day, based on AUC exposure.

Dapagliflozin was negative in the Ames mutagenicity assay and was positive in a series of *in vitro* clastogenicity assays in the presence of S9 activation and at concentrations

greater than or equal to 100 µg/mL. Dapagliflozin was negative for clastogenicity in a series of *in vivo* studies evaluating micronuclei or DNA repair in rats at exposure multiples greater than 2100-times the clinical dose.

There was no carcinogenicity or mutagenicity signal in animal studies, suggesting that dapagliflozin does not represent a genotoxic risk to humans.

Dapagliflozin had no effects on mating, fertility, or early embryonic development in treated male or female rats at exposure multiples less than or equal to 1708-times and 998-times the maximum recommended human dose in males and females, respectively.

Metformin HCl

Long-term carcinogenicity studies have been performed in rats (dosing duration of 104 weeks) and mice (dosing duration of 91 weeks) at doses up to and including 900 and 1,500 mg/kg/day, respectively. These doses are both approximately 4-times the maximum recommended human dose of 2,000 mg based on body surface area comparisons. No evidence of carcinogenicity with metformin was found in either male or female mice. Similarly, there was no tumorigenic potential observed with metformin in male rats. There was, however, an increased incidence of benign stromal uterine polyps in female rats treated with 900 mg/kg/day.

There was no evidence of a mutagenic potential of metformin in the following *in vitro* tests: Ames test (*S. typhimurium*), gene mutation test (mouse lymphoma cells), or chromosomal aberrations test (human lymphocytes). Results in the *in vivo* mouse micronucleus test were also negative.

Fertility of male or female rats was unaffected by metformin when administered at doses as high as 600 mg/kg/day, which is approximately 3-times the maximum recommended human dose based on body surface area comparisons.

14 CLINICAL STUDIES

14.1 Glycemic Control Trials in Adults with Type 2 Diabetes Mellitus

The effectiveness of XIGDUO XR has been established in clinical trials of the coadministration of oral dapagliflozin and metformin HCl extended-release tablets in treatment-naïve adult patients inadequately controlled on diet and exercise alone. The coadministration of dapagliflozin and metformin HCl immediate-release or extended-release tablets has been studied in adult patients with type 2 diabetes mellitus inadequately controlled on metformin HCl and compared with a sulfonylurea (glipizide) in combination with metformin HCl. Treatment with dapagliflozin plus metformin HCl at all doses produced statistically significant improvements in HbA1c and fasting plasma glucose (FPG) compared to placebo in combination with metformin HCl (initial or add-on therapy). HbA1c reductions were seen across subgroups including gender, age, race, duration of disease, and baseline body mass index (BMI).

Dapagliflozin Initial Combination Therapy with Metformin HCl Extended-Release

A total of 1236 treatment-naïve adult patients with inadequately controlled type 2 diabetes mellitus (HbA1c $\geq 7.5\%$ and $\leq 12\%$) participated in 2 active-controlled trials of 24-week duration to evaluate initial therapy with dapagliflozin 5 mg (NCT00643851) or 10 mg (NCT00859898) in combination with metformin extended-release formulation.

In one trial, 638 patients randomized to 1 of 3 treatment arms following a 1-week lead-in period received: dapagliflozin 10 mg plus metformin HCl extended-release (up to 2,000 mg/day), dapagliflozin 10 mg plus placebo, or metformin HCl extended-release (up to

2,000 mg/day) plus placebo. Metformin HCl extended-release dosage was up-titrated weekly in 500 mg increments, as tolerated, with a median dosage achieved of 2,000 mg.

The combination treatment of dapagliflozin 10 mg plus metformin HCl extended-release provided statistically significant improvements in HbA1c and FPG compared with either of the monotherapy treatments and statistically significant reduction in body weight compared with metformin HCl extended-release alone (see Table 11 and Figure 2). Dapagliflozin 10 mg as monotherapy also provided statistically significant improvements in FPG and statistically significant reduction in body weight compared with metformin HCl alone and was non-inferior to metformin HCl extended-release monotherapy in lowering HbA1c.

Table 11: Results at Week 24 (LOCF*) in an Active-Controlled Trial of Dapagliflozin Initial Combination Therapy with Metformin HCl Extended-Release in Adults with Type 2 Diabetes Mellitus

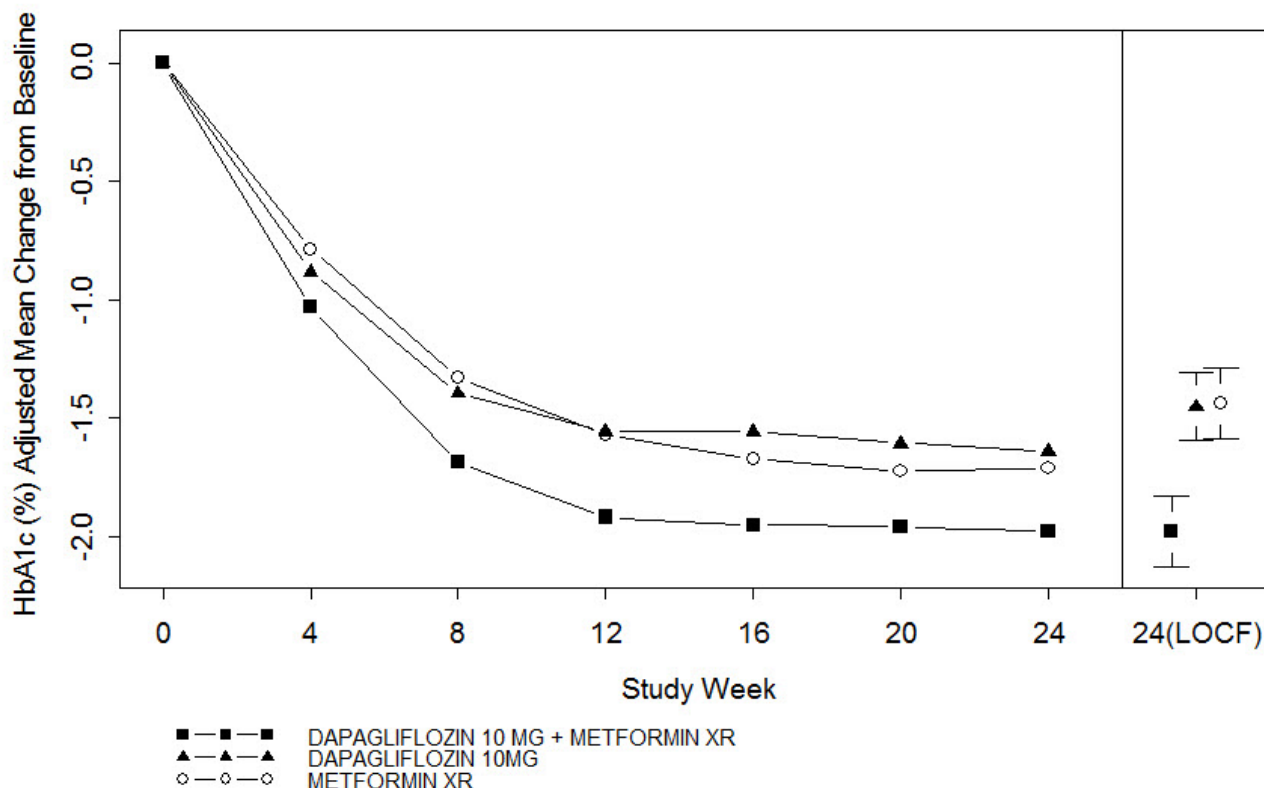
Efficacy Parameter	Dapagliflozin 10 mg + Metformin HCl extended-release N=211[†]	Dapagliflozin 10 mg N=219[†]	Metformin HCl extended-release N=208[†]
HbA1c (%)			
Baseline (mean)	9.1	9.0	9.0
Change from baseline (adjusted mean [‡])	-2.0	-1.5	-1.4
Difference from dapagliflozin (adjusted mean [‡]) (95% CI)	-0.5 [§] (-0.7, -0.3)		
Difference from metformin HCl extended-release (adjusted mean [‡]) (95% CI)	-0.5 [§] (-0.8, -0.3)	0.0 [¶] (-0.2, 0.2)	
Percent of patients achieving HbA1c <7% adjusted for baseline	46.6%	31.7%	35.2%
FPG (mg/dL)			
Baseline (mean)	189.6	197.5	189.9
Change from baseline (adjusted mean [‡])	-60.4	-46.4	-34.8
Difference from dapagliflozin (adjusted mean [‡]) (95% CI)	-13.9 [§] (-20.9, -7.0)		
Difference from metformin HCl extended-release (adjusted mean [‡]) (95% CI)	-25.5 [§] (-32.6, -18.5)	-11.6 [#] (-18.6, -4.6)	
Body Weight (kg)			
Baseline (mean)	88.6	88.5	87.2
Change from baseline (adjusted mean [‡])	-3.3	-2.7	-1.4
Difference from metformin HCl extended-release (adjusted mean [‡]) (95% CI)	-2.0 [§] (-2.6, -1.3)	-1.4 [§] (-2.0, -0.7)	

* LOCF: last observation (prior to rescue for rescued patients) carried forward.

[†] All randomized patients who took at least one dose of double-blind trial medication during the short-term double-blind period.

‡ Least squares mean adjusted for baseline value.
 § p-value <0.0001.
 ¶ Non-inferior versus metformin HCl extended-release.
 # p-value <0.05.

Figure 2: Adjusted Mean Change from Baseline Over Time in HbA1c (%) in a 24-Week Active-Controlled Trial of Dapagliflozin Initial Combination Therapy with Metformin HCl Extended-Release in Adults with Type 2 Diabetes Mellitus



Left side graph: Values for adjusted mean change from baseline based on a longitudinal repeated measures model, including randomized subjects who completed the study with both baseline and Week 24 HbA1C values without rescue.
 Right side graph for Week 24 (LOCF): Values for adjusted mean change from baseline and 95% CIs based on an ANCOVA model, including randomized subjects with a baseline and at least one post baseline HbA1c before rescue.

In the second trial (NCT00643851), 603 patients were randomized to 1 of 3 treatment arms following a 1-week lead-in period: dapagliflozin 5 mg plus metformin HCl extended-release (up to 2,000 mg/day), dapagliflozin 5 mg plus placebo, or metformin HCl extended-release (up to 2,000 mg/day) plus placebo. Metformin HCl extended-release dosage was up-titrated weekly in 500 mg increments, as tolerated, with a median dosage achieved of 2,000 mg.

The combination treatment of dapagliflozin 5 mg plus metformin HCl extended-release provided statistically significant improvements in HbA1c and FPG compared with either of the monotherapy treatments and statistically significant reduction in body weight compared with metformin HCl extended-release alone (see Table 12).

Table 12: Results at Week 24 (LOCF*) in an Active-Controlled Trial of Dapagliflozin Initial Combination Therapy with Metformin HCl Extended-Release in Adults with Type 2 Diabetes Mellitus

Efficacy Parameter	Dapagliflozin	Dapagliflozin	Metformin HCl
--------------------	---------------	---------------	---------------

	5 mg + Metformin HCl extended-release N=194[†]	5 mg N=203[†]	extended-release N=201[†]
HbA1c (%)			
Baseline (mean)	9.2	9.1	9.1
Change from baseline (adjusted mean [‡])	-2.1	-1.2	-1.4
Difference from dapagliflozin (adjusted mean [‡]) (95% CI)	-0.9 [§] (-1.1, -0.6)		
Difference from metformin HCl extended-release (adjusted mean [‡]) (95% CI)	-0.7 [§] (-0.9, -0.5)		
Percent of patients achieving HbA1c <7% adjusted for baseline	52.4% [¶]	22.5%	34.6%
FPG (mg/dL)			
Baseline (mean)	193.4	190.8	196.7
Change from baseline (adjusted mean [‡])	-61.0	-42.0	-33.6
Difference from dapagliflozin (adjusted mean [‡]) (95% CI)	-19.1 [§] (-26.7, -11.4)		
Difference from metformin HCl extended-release (adjusted mean [‡]) (95% CI)	-27.5 [§] (-35.1, -19.8)		
Body Weight (kg)			
Baseline (mean)	84.2	86.2	85.8
Change from baseline (adjusted mean [‡])	-2.7	-2.6	-1.3
Difference from metformin HCl extended-release (adjusted mean [‡]) (95% CI)	-1.4 [§] (-2.0, -0.7)		

* LOCF: last observation (prior to rescue for rescued patients) carried forward.

[†] All randomized patients who took at least one dose of double-blind trial medication during the short-term double-blind period.

[‡] Least squares mean adjusted for baseline value.

[§] p-value <0.0001.

[¶] p-value <0.05.

Dapagliflozin Add-On to Metformin HCl Immediate-Release

A total of 546 adult patients with type 2 diabetes mellitus with inadequate glycemic control (HbA1c $\geq 7\%$ and $\leq 10\%$) participated in a 24-week, placebo-controlled trial to evaluate dapagliflozin in combination with metformin HCl (NCT00528879). Patients on metformin HCl at a dosage of at least 1,500 mg/day were randomized after completing a 2-week, single-blind, placebo lead-in period. Following the lead-in period, eligible patients were randomized to dapagliflozin 5 mg, dapagliflozin 10 mg, or placebo in addition to their current dosage of metformin HCl.

As add-on treatment to metformin HCl, dapagliflozin 10 mg provided statistically significant improvements in HbA1c and FPG, and statistically significant reduction in body weight compared with placebo at Week 24 (see Table 13 and Figure 3). Statistically

significant ($p < 0.05$ for both dosages) mean changes from baseline in systolic blood pressure relative to placebo plus metformin were -4.5 mmHg and -5.3 mmHg with dapagliflozin 5 mg and 10 mg plus metformin HCl, respectively.

Table 13: Results of a 24-Week (LOCF*) Placebo-Controlled Trial of Dapagliflozin in Add-On Combination with Metformin HCl Immediate-Release in Adults with Type 2 Diabetes Mellitus

Efficacy Parameter	Dapagliflozin 10 mg + Metformin HCl immediate- release N=135[†]	Dapagliflozin 5 mg + Metformin HCl immediate- release N=137[†]	Placebo + Metformin HCl immediate- release N=137[†]
HbA1c (%)			
Baseline (mean)	7.9	8.2	8.1
Change from baseline (adjusted mean [‡])	-0.8	-0.7	-0.3
Difference from placebo (adjusted mean [‡]) (95% CI)	-0.5 [§] (-0.7, -0.3)	-0.4 [§] (-0.6, -0.2)	
Percent of patients achieving HbA1c <7% adjusted for baseline	40.6% [¶]	37.5% [¶]	25.9%
FPG (mg/dL)			
Baseline (mean)	156.0	169.2	165.6
Change from baseline at Week 24 (adjusted mean [‡])	-23.5	-21.5	-6.0
Difference from placebo (adjusted mean [‡]) (95% CI)	-17.5 [§] (-25.0, -10.0)	-15.5 [§] (-22.9, -8.1)	
Change from baseline at Week 1 (adjusted mean [‡])	-16.5 [§] (N=115)	-12.0 [§] (N=121)	1.2 (N=126)
Body Weight (kg)			
Baseline (mean)	86.3	84.7	87.7
Change from baseline (adjusted mean [‡])	-2.9	-3.0	-0.9
Difference from placebo (adjusted mean [‡]) (95% CI)	-2.0 [§] (-2.6, -1.3)	-2.2 [§] (-2.8, -1.5)	

* LOCF: last observation (prior to rescue for rescued patients) carried forward.

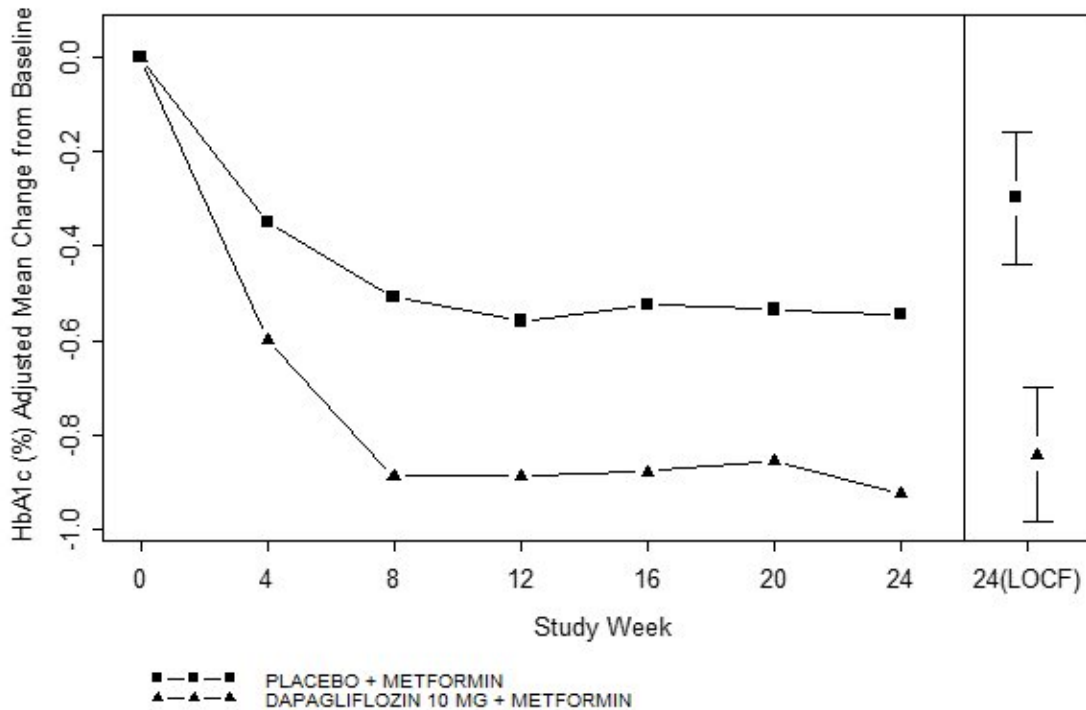
[†] All randomized patients who took at least one dose of double-blind trial medication during the short-term double-blind period.

[‡] Least squares mean adjusted for baseline value.

[§] p-value <0.0001 versus placebo + metformin HCl.

[¶] p-value <0.05 versus placebo + metformin HCl.

Figure 3: Adjusted Mean Change from Baseline Over Time in HbA1c (%) in a 24-Week Placebo-Controlled Trial of Dapagliflozin in Combination with Metformin HCl Immediate-Release in Adults with Type 2 Diabetes Mellitus



Left side graph: Values for adjusted mean change from baseline based on a longitudinal repeated measures model, including randomized subjects who completed Short-Term Period with both baseline and Week 24 HbA1c values without rescue.
 Right side graph for Week 24 (LOCF): Values for adjusted mean change from baseline and 95% CIs based on an ANCOVA model, including randomized subjects with a baseline and at least one post baseline HbA1c before rescue.

Active Glipizide-Controlled Trial of Dapagliflozin as Add-On to Metformin HCl Immediate-Release in Adults with Type 2 Diabetes Mellitus

A total of 816 adult patients with type 2 diabetes mellitus with inadequate glycemic control (HbA1c >6.5% and ≤10%) were randomized in a 52-week, glipizide-controlled, non-inferiority trial to evaluate dapagliflozin as add-on therapy to metformin HCl (NCT00660907). Patients on metformin HCl at a dosage of at least 1,500 mg/day were randomized following a 2-week placebo lead-in period to glipizide or dapagliflozin (5 mg or 2.5 mg, respectively) and were up-titrated over 18 weeks to optimal glycemic effect (FPG <110 mg/dL, <6.1 mmol/L) or to the highest dose level (up to glipizide 20 mg and dapagliflozin 10 mg) as tolerated by patients. Thereafter, dosages were kept constant, except for down-titration to prevent hypoglycemia.

At the end of the titration period, 87% of patients treated with dapagliflozin had been titrated to the maximum trial dosage (10 mg) versus 73% treated with glipizide (20 mg). Dapagliflozin treatment led to a similar mean reduction in HbA1c from baseline at Week 52 (LOCF), compared with glipizide, thus demonstrating non-inferiority (see Table 14). Dapagliflozin treatment led to a statistically significant mean reduction in body weight from baseline at Week 52 (LOCF) compared with a mean increase in body weight in the glipizide group. Statistically significant (p<0.0001) mean change from baseline in systolic blood pressure relative to glipizide plus metformin was -5.0 mmHg with dapagliflozin plus metformin.

Table 14: Results at Week 52 (LOCF*) in an Active-Controlled Trial Comparing Dapagliflozin to Glipizide as Add-On to Metformin in Adults with Type 2 Diabetes Mellitus

Efficacy Parameter	Dapagliflozin + Metformin HCl immediate-release N=400[†]	Glipizide + Metformin HCl immediate-release N=401[†]
HbA1c (%)		
Baseline (mean)	7.7	7.7
Change from baseline (adjusted mean [‡])	-0.5	-0.5
Difference from glipizide + metformin HCl immediate-release (adjusted mean [‡]) (95% CI)	0.0 [§] (-0.1, 0.1)	
Body Weight (kg)		
Baseline (mean)	88.4	87.6
Change from baseline (adjusted mean [‡])	-3.2	1.4
Difference from glipizide + metformin HCl immediate-release (adjusted mean [‡]) (95% CI)	-4.7 [¶] (-5.1, -4.2)	

* LOCF: last observation carried forward.

† Randomized and treated patients with baseline and at least 1 post-baseline efficacy measurement.

‡ Least squares mean adjusted for baseline value.

§ Noninferior to glipizide + metformin HCl.

¶ p-value <0.0001.

Use in Adults with Type 2 Diabetes Mellitus and Moderate Renal Impairment

Dapagliflozin was assessed in two placebo-controlled trials of adult patients with type 2 diabetes mellitus and moderate renal impairment.

Patients with type 2 diabetes mellitus and an eGFR between 45 to less than 60 mL/min/1.73 m² inadequately controlled on current diabetes therapy participated in a 24-week, double-blind, placebo-controlled clinical trial (NCT02413398). Patients were randomized to either dapagliflozin 10 mg or placebo, administered orally once daily. At Week 24, dapagliflozin provided statistically significant reductions in HbA1c compared with placebo (Table 15).

Table 15: Results at Week 24 of Placebo-Controlled Trial for Dapagliflozin in Adults with Type 2 Diabetes Mellitus and Renal Impairment (eGFR 45 to less than 60 mL/min/1.73 m²)

	Dapagliflozin 10 mg N=160	Placebo N=161
Number of patients:		
HbA1c (%)		
Baseline (mean)	8.3	8.0
Change from baseline (adjusted mean*)	-0.4	-0.1
Difference from placebo (adjusted mean*) (95% CI)	-0.3 [†] (-0.5, -0.1)	

* Least squares mean adjusted for baseline value; at Week 24, HbA1c was missing for 5.6% and 6.8% of individuals treated with dapagliflozin and placebo, respectively. Retrieved dropouts, i.e., observed HbA1c at Week 24 from subjects who discontinued treatment, were used to impute missing values in HbA1c.

† p-value =0.008 versus placebo.

14.2 Glycemic Control in Pediatric Patients Aged 10 Years and Older with

Type 2 Diabetes Mellitus

Glycemic Control Trial of Dapagliflozin in Pediatric Patients Aged 10 to 17 Years with Type 2 Diabetes Mellitus

In a pediatric trial (NCT03199053), patients aged 10 to 17 years with inadequately controlled type 2 diabetes mellitus (HbA1c $\geq 6.5\%$ and $\leq 10.5\%$) were randomized to dapagliflozin (81 patients) or placebo (76 patients) as add-on to metformin HCl, insulin or a combination of metformin HCl and insulin. In this 26-week, placebo-controlled, double-blind randomized clinical trial with a 26-week safety extension, patients received 5 mg of dapagliflozin or placebo following a lead-in period. At Week 14, patients with HbA1c values $< 7\%$ remained on 5 mg while patients with HbA1c values $\geq 7\%$ were randomized to either continue on 5 mg or up-titrate to 10 mg.

At baseline, 88% of dapagliflozin-treated patients and 89% of placebo-treated patients were on metformin HCl with or without insulin as background medication. The mean HbA1c at baseline was 8.2% in dapagliflozin-treated patients and 8.0% in placebo-treated patients, and the mean duration of type 2 diabetes mellitus was 2.3 years in dapagliflozin-treated patients and 2.5 years in placebo-treated patients. The mean age was 14.4 years in dapagliflozin-treated patients and 14.7 years in placebo-treated patients, and approximately 61% of dapagliflozin-treated patients and 58% of placebo-treated patients were female. In dapagliflozin-treated patients, approximately 52% were White, 22% were Asian, 9% were Black or African American, and 56% were of Hispanic or Latino ethnicity. In placebo-treated patients, approximately 42% were White, 32% were Asian, 4% were Black or African American, and 45% were of Hispanic or Latino ethnicity. The mean BMI was 29.7 kg/m² in dapagliflozin-treated patients and 28.5 kg/m² in placebo-treated patients, and mean BMI Z-score was 1.7 in dapagliflozin-treated patients and 1.5 in placebo-treated patients. The mean eGFR at baseline was 115 mL/min/1.73 m² in dapagliflozin-treated patients and 113 mL/min/1.73 m² in placebo-treated patients.

At Week 26, treatment with dapagliflozin provided statistically significant improvements in HbA1c compared with placebo (Table 16). This effect was consistent across subgroups including race, ethnicity, sex, age group (≥ 10 to < 15 years of age and ≥ 15 to < 18 years of age), background antidiabetic treatment, and baseline BMI.

The treatment benefit with dapagliflozin was consistent in the subgroup of patients with metformin HCl with or without insulin as background therapy [adjusted mean change in HbA1c relative to placebo from baseline to Week 26 was -1.0% (95% CI -1.6, -0.4)].

Table 16: Results at Week 26 in a Placebo-Controlled Trial of Dapagliflozin as Add-On to Metformin HCl and/or Insulin in Pediatric Patients Aged 10 Years and Older with Type 2 Diabetes Mellitus

Efficacy Parameter	Dapagliflozin 5 mg and 10 mg	Placebo
Intent-to-Treat Population (N)*	81	76
HbA1c[†] (%)		
Baseline (mean)	8.2	8.0
Change from baseline (adjusted mean [‡])	-0.6	0.4
Difference from placebo (adjusted mean [‡]) (95% CI)	-1.0 [§] (-1.6, -0.5)	
FPG[†] (mg/dL)		
Baseline (mean)	162.2	152.0
Change from baseline (adjusted mean [‡])	-10.3	9.2

Difference from placebo (adjusted mean [‡]) (95% CI)	-19.5 [¶] (-36.4, -2.6)	
Percent of Subjects Achieving a HbA1c Level <7%	34.6%	25.0%

CI=confidence interval

* All randomized patients who received at least one dose of double-blind trial medication during the treatment period. Includes data regardless of rescue or premature treatment discontinuation.

† Multiple imputations using placebo washout approach for missing efficacy endpoint. Imputed for HbA1c (dapagliflozin N=6 (7.4%), placebo N=6 (7.9%)), for FPG (dapagliflozin N=6 (7.4%), placebo N=8 (10.5%)).

‡ Least squares mean adjusted for baseline value, treatment, age, gender and baseline diabetic medication.

§ p-value versus placebo <0.001. p-value is two-sided.

¶ p-value versus placebo <0.05. p-value is two-sided.

Glycemic Control Trial of Metformin HCl Immediate-Release in Pediatric Patients Aged 10 to 16 Years with Type 2 Diabetes Mellitus

A double-blind, placebo-controlled trial was conducted in pediatric patients aged 10 to 16 years with type 2 diabetes mellitus (mean FPG 182.2 mg/dL), where patients were treated with metformin HCl immediate-release tablets (up to 2,000 mg/day) for up to 16 weeks (mean duration of treatment 11 weeks). The results are displayed in Table 17.

Table 17: Mean Change in Fasting Plasma Glucose at Week 16 Comparing Metformin HCl vs. Placebo in Pediatric Patients* with Type 2 Diabetes Mellitus

	Metformin HCl	Placebo	p-value
FPG	(n=37)	(n=36)	<0.001
Baseline	162.4	192.3	
Change at Final Visit	-42.9	21.4	

* Pediatric patients mean age 13.8 years (range 10-16 years)

Mean baseline body weight was 205 lbs and 189 lbs in the metformin HCl immediate-release and placebo arms, respectively. Mean change in body weight from baseline to week 16 was -3.3 lbs and -2.0 lbs in the metformin HCl and placebo arms, respectively.

14.3 Cardiovascular Outcomes in Adults with Type 2 Diabetes Mellitus

Dapagliflozin Effect on Cardiovascular Events (DECLARE, NCT01730534) was an international, multicenter, randomized, double-blind, placebo-controlled, clinical trial conducted to determine the effect of dapagliflozin 10 mg relative to placebo on cardiovascular (CV) outcomes when added to current background therapy. All patients had type 2 diabetes mellitus and either established CV disease or two or more additional CV risk factors (age ≥55 years in men or ≥60 years in women and one or more of dyslipidemia, hypertension, or current tobacco use). Concomitant antidiabetic and atherosclerotic therapies could be adjusted, at the discretion of investigators, to ensure participants were treated according to the standard care for these diseases.

Of 17160 randomized patients, 6974 (40.6%) had established CV disease and 10186 (59.4%) did not have established CV disease. A total of 8582 patients were randomized to dapagliflozin 10 mg, 8578 to placebo, and patients were followed for a median of 4.2 years.

Approximately 80% of the trial population was White, 4% Black or African American, and 13% Asian. The mean age was 64 years, and approximately 63% were male.

Mean duration of diabetes was 11.9 years and 22.4% of patients had diabetes for less than 5 years. Mean eGFR was 85.2 mL/min/1.73 m². At baseline, 23.5% of patients had microalbuminuria (UACR ≥ 30 to ≤ 300 mg/g) and 6.8% had macroalbuminuria (UACR > 300 mg/g). Mean HbA1c was 8.3% and mean BMI was 32.1 kg/m². At baseline, 10% of patients had a history of heart failure.

Most patients (98.1%) used one or more antihyperglycemic medications at baseline. 82.0% of the patients were being treated with metformin HCl, 40.9% with insulin, 42.7% with a sulfonylurea, 16.8% with a DPP4 inhibitor, and 4.4% with a GLP-1 receptor agonist.

Approximately 81.3% of patients were treated with angiotensin converting enzyme inhibitors or angiotensin receptor blockers, 75.0% with statins, 61.1% with antiplatelet therapy, 55.5% with acetylsalicylic acid, 52.6% with beta-blockers, 34.9% with calcium channel blockers, 22.0% with thiazide diuretics, and 10.5% with loop diuretics.

A Cox proportional hazards model was used to test for non-inferiority against the pre-specified risk margin of 1.3 for the hazard ratio (HR) of the composite of CV death, myocardial infarction (MI), or ischemic stroke (MACE) and if non-inferiority was demonstrated, to test for superiority on the two primary endpoints: 1) the composite of hospitalization for heart failure or CV death, and 2) MACE.

The incidence rate of MACE was similar in both treatment arms: 2.30 MACE events per 100 patient-years on dapagliflozin vs 2.46 MACE events per 100 patient-years on placebo. The estimated hazard ratio of MACE associated with dapagliflozin relative to placebo was 0.93 with a 95% CI of (0.84, 1.03). The upper bound of this confidence interval, 1.03, excluded the pre-specified non-inferiority margin of 1.3.

Dapagliflozin 10 mg was superior to placebo in reducing the incidence of the primary composite endpoint of hospitalization for heart failure or CV death [HR 0.83 (95% CI 0.73, 0.95)].

The treatment effect was due to a significant reduction in the risk of hospitalization for heart failure in subjects randomized to dapagliflozin 10 mg [HR 0.73 (95% CI 0.61, 0.88)], with no change in the risk of CV death (Table 18 and Figures 4 and 5).

Table 18: Treatment Effects for the Primary Endpoints* and their Components* in the DECLARE Trial

Efficacy Variable (time to first occurrence)	Patients with events n(%)		Hazard Ratio (95% CI)
	Dapagliflozin 10 mg N=8582	Placebo N=8578	
Primary Endpoints			
Composite of Hospitalization for Heart Failure, CV Death[†]	417 (4.9)	496 (5.8)	0.83 (0.73, 0.95)
Composite Endpoint of CV Death, MI, Ischemic Stroke	756 (8.8)	803 (9.4)	0.93 (0.84, 1.03)
Components of the composite endpoints [‡]			
Hospitalization for Heart Failure	212 (2.5)	286 (3.3)	0.73 (0.61, 0.88)
CV Death	245 (2.9)	249 (2.9)	0.98 (0.82, 1.17)

Myocardial Infarction	393 (4.6)	441 (5.1)	0.89 (0.77, 1.01)
Ischemic Stroke	235 (2.7)	231 (2.7)	1.01 (0.84, 1.21)

N=Number of patients, CI=Confidence interval, CV=Cardiovascular, MI=Myocardial infarction, eGFR=estimated glomerular filtration rate, ESRD=End-stage renal disease

* Full analysis set.

† p-value =0.005 versus placebo.

‡ Total number of events presented for each component of the composite endpoints.

Figure 4: Time to First Occurrence of Hospitalization for Heart Failure or CV Death in the DECLARE Trial

Figure 5: Time to First Occurrence of Hospitalization for Heart Failure in the DECLARE Trial

14.4 Chronic Kidney Disease

The Trial to Evaluate the Effect of Dapagliflozin on Renal Outcomes and Cardiovascular Mortality in Patients with Chronic Kidney Disease (DAPA-CKD, NCT03036150) was an international, multicenter, randomized, double-blind, placebo-controlled trial in adult patients with chronic kidney disease (CKD) (eGFR between 25 and 75 mL/min/1.73 m²) and albuminuria [urine albumin creatinine ratio (UACR) between 200 and 5000 mg/g] who were receiving standard of care background therapy, including a maximally tolerated, labeled daily dosage of an angiotensin-converting enzyme inhibitor (ACEi) or angiotensin receptor blocker (ARB). The trial excluded patients with autosomal dominant or autosomal recessive polycystic kidney disease, lupus nephritis, or ANCA-associated vasculitis and patients requiring cytotoxic, immunosuppressive, or immunomodulatory therapies in the preceding 6 months.

The primary objective was to determine whether dapagliflozin 10 mg reduces the incidence of the composite endpoint of $\geq 50\%$ sustained decline in eGFR, progression to end stage kidney disease (ESKD) (defined as sustained eGFR < 15 mL/min/1.73 m², initiation of chronic dialysis treatment or renal transplant), CV or renal death.

A total of 4304 patients were randomized equally to dapagliflozin 10 mg or placebo and were followed for a median of 28.5 months. The trial included patients with type 2 diabetes mellitus (n=2906) and patients without diabetes (n=1398). The mean age of the trial population was 62 years and 67% were male. The population was 53% White, 4% Black or African American, and 34% Asian; 25% were of Hispanic or Latino ethnicity. At baseline, mean eGFR was 43 mL/min/1.73 m², 44% of patients had an eGFR 30 mL/min/1.73m² to less than 45 mL/min/1.73m², and 15% of patients had an eGFR less than 30 mL/min/1.73m². Median UACR was 950 mg/g. The most common etiologies of CKD were diabetic nephropathy (58%), ischemic/hypertensive nephropathy (16%), and IgA nephropathy (6%). At baseline, 97% of patients were treated with ACEi or ARB.

Approximately 44% were taking antiplatelet agents, and 65% were on a statin.

Out of 2906 (68%) patients who had type 2 diabetes mellitus at randomization, 1455 patients received dapagliflozin 10 mg and 1451 received placebo. At baseline of the patients with type 2 diabetes mellitus, 43% were being treated with metformin HCl (631 patients on dapagliflozin 10 mg and 613 on placebo) and 55% were treated with insulin.

The mean age of the type 2 diabetes mellitus trial population was 64 years, 67% were male, 53% White, 5% Black or African American and 32% Asian, 27% were of Hispanic or Latino ethnicity. In these patients, mean eGFR was 44 mL/min/1.73 m², 43% of patients had an eGFR 30 mL/min/1.73 m² to below 45 mL/min/1.73 m², and 14% of patients had an eGFR below 30 mL/min/1.73 m². Median UACR was 1017 mg/g. The most common etiologies of CKD in this group were diabetic nephropathy (86%) and ischemic/hypertensive nephropathy (7%).

Dapagliflozin 10 mg reduced the incidence of the primary composite endpoint of $\geq 50\%$ sustained decline in eGFR, progression to ESKD, CV or renal death in overall population [HR 0.61 (95% CI 0.51,0.72); $p < 0.0001$]. The dapagliflozin 10 mg and placebo event curves separate by Month 4 and continue to diverge over the trial period. The treatment effect reflected a reduction in $\geq 50\%$ sustained decline in eGFR, progression to ESKD, and CV death. There were few renal deaths during the trial (Table 19 and Figure 6).

The treatment benefit of dapagliflozin 10 mg was consistent in reducing the incidence of the primary composite endpoint in patients with type 2 diabetes mellitus [HR 0.64 (95% CI 0.52, 0.79)] and in patients with type 2 diabetes mellitus and metformin HCl as background therapy [HR 0.74 (95% CI 0.53, 1.03)].

The treatment benefit of dapagliflozin 10 mg was consistent in reducing the incidence of the composite endpoint of CV death or hospitalization for heart failure and all-cause mortality in patients with type 2 diabetes mellitus [HR 0.70 (95% CI 0.53, 0.92) and HR 0.74 (95% CI 0.56, 0.98), respectively] and in patients with type 2 diabetes mellitus and metformin HCl as background therapy [HR 0.59 (95% CI 0.38, 0.91) and HR 0.71 (95% CI 0.46, 1.10)].

Table 19: Treatment Effect for the Primary Composite Endpoint, its Components, and Secondary Composite Endpoints in DAPA CKD Trial

Efficacy Variable (time to first occurrence)	Patients with events (event rate)		Hazard ratio (95% CI)	p-value
	Dapagliflozin 10 mg N=2152	Placebo N=2152		
Composite of $\geq 50\%$ sustained eGFR decline, ESKD, CV or renal death	197 (4.6)	312 (7.5)	0.61 (0.51, 0.72)	<0.0001
Components of the primary composite endpoint				
$\geq 50\%$ Sustained eGFR Decline	112 (2.6)	201 (4.8)	0.53 (0.42, 0.67)	
ESKD*	109 (2.5)	161 (3.8)	0.64 (0.50, 0.82)	
CV Death	65 (1.4)	80 (1.7)	0.81 (0.58, 1.12)	

Renal Death	2 (<0.1)	6 (0.1)		
≥50% sustained eGFR decline, ESKD or renal death	142 (3.3)	243 (5.8)	0.56 (0.45, 0.68)	<0.0001
CV death or Hospitalization for Heart Failure	100 (2.2)	138 (3.0)	0.71 (0.55, 0.92)	0.0089
Hospitalization for Heart Failure	37 (0.8)	71 (1.6)	0.51 (0.34, 0.76)	
All-Cause Mortality	101 (2.2)	146 (3.1)	0.69 (0.53, 0.88)	0.0035

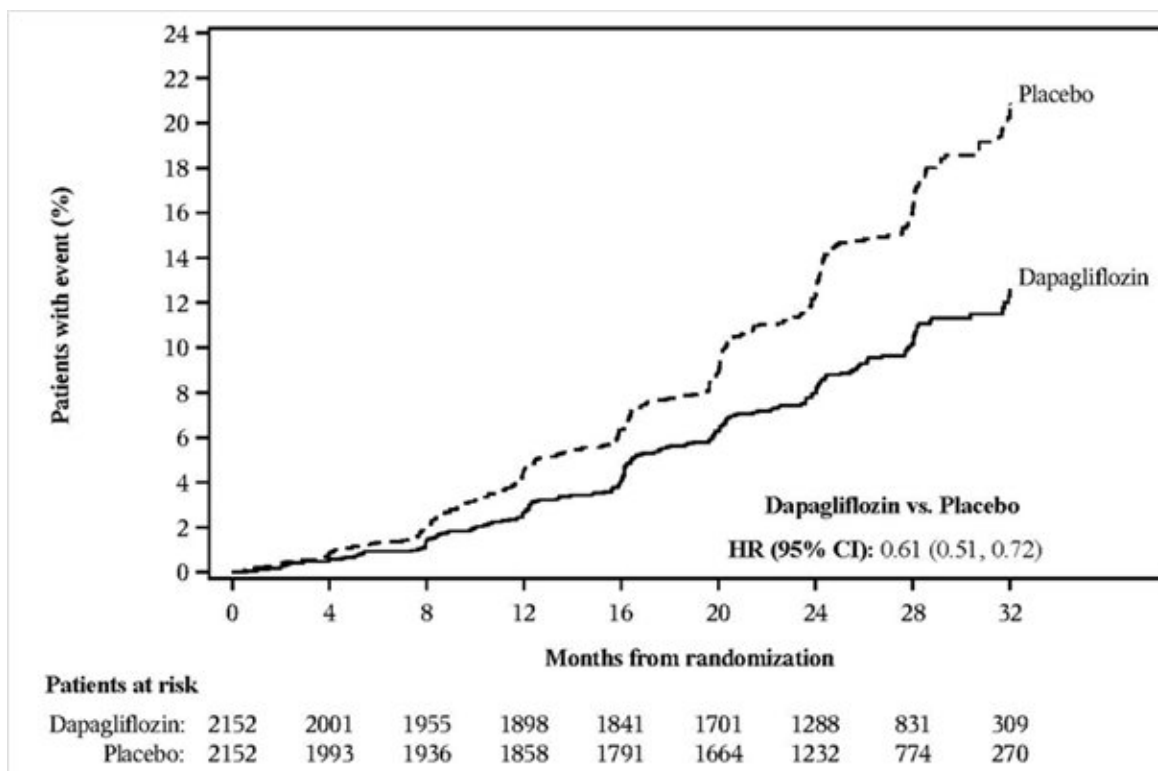
N=Number of patients, CI=Confidence interval, CV=Cardiovascular.

* ESKD is defined as sustained eGFR<15 mL/min/1.73 m², initiation of chronic dialysis treatment, or transplant.

NOTE: Time to first event was analyzed in a Cox proportional hazards model. Event rates are presented as the number of subjects with event per 100 patient years of follow-up.

There were too few events of renal death to compute a reliable hazard ratio.

Figure 6: Time to First Occurrence of the Primary Composite Endpoint, ≥50% Sustained Decline in eGFR, ESKD, CV or Renal Death (DAPA-CKD Trial)



DAPA-CKD enrolled a population with relatively advanced CKD at high risk of progression. Exploratory analyses of a randomized, double-blind, placebo-controlled trial conducted to determine the effect of dapagliflozin 10 mg on CV outcomes (the DECLARE trial) support the conclusion that dapagliflozin 10 mg is also likely to be

effective in patients with less advanced CKD.

14.5 Heart Failure

The efficacy and safety of dapagliflozin 10 mg were assessed independently in two Phase 3 trials in patients with heart failure.

Dapagliflozin And Prevention of Adverse outcomes in Heart Failure (DAPA-HF, NCT03036124) was an international, multicenter, randomized, double-blind, placebo-controlled trial in adult patients with heart failure [New York Heart Association (NYHA) functional class II-IV] with reduced ejection fraction [left ventricular ejection fraction (LVEF) 40% or less] to determine whether dapagliflozin reduces the risk of cardiovascular death and hospitalization for heart failure. Of 4744 patients, 2373 were randomized to dapagliflozin 10 mg and 2371 to placebo and were followed for a median of 18 months. The trial included patients with type 2 diabetes mellitus (n=2139) and patients without diabetes (n=2605).

Dapagliflozin Evaluation to Improve the LIVEs of Patients with PReserved Ejection Fraction Heart Failure (DELIVER, NCT03619213) was an international, multicenter, randomized, double-blind, placebo-controlled trial in patients aged ≥ 40 years with heart failure (NYHA class II-IV) with LVEF $>40\%$ and evidence of structural heart disease to determine whether dapagliflozin reduces the risk of cardiovascular death, hospitalization for heart failure or urgent heart failure visits. Of 6263 patients, 3131 were randomized to dapagliflozin 10 mg and 3132 to placebo and were followed for a median of 28 months. The trial included 654 (10%) heart failure patients who were randomized during hospitalization for heart failure or within 30 days of discharge. The trial included patients with type 2 diabetes mellitus (n=2806) and patients without diabetes (n=3457).

In DAPA-HF, at baseline, 94% of patients were treated with ACEi, ARB or angiotensin receptor-neprilysin inhibitor (ARNI, including sacubitril/valsartan 11%), 96% with beta-blocker, 71% with mineralocorticoid receptor antagonist (MRA), 93% with diuretic, and 26% had an implantable device (with defibrillator function). History of type 2 diabetes mellitus was present in 42%, and an additional 3% had type 2 diabetes mellitus based on a HbA1c $\geq 6.5\%$ at both enrollment and randomization, totaling to 1075 patients in the dapagliflozin group and 1064 in the placebo group. At baseline of the patients with type 2 diabetes mellitus, 48% were treated with metformin HCl (505 patients on dapagliflozin 10 mg and 515 on placebo) and 25% were treated with insulin.

In DAPA-HF, the mean age of the type 2 diabetes mellitus population was 67 years, 78% were male, 70% White, 6% Black or African American and 23% Asian. At baseline, 64% patients were classified as NYHA class II, 35% class III and 1% class IV, median LVEF was 32%. Patients were on standard of care therapy; 93% of type 2 diabetes mellitus patients were treated with ACEi, ARB, or ARNI (11%), 97% with beta-blocker, 71% with MRA, 95% with diuretic and 27% had an implantable device (with defibrillator function). In these patients, mean eGFR was 63 mL/min/1.73 m².

In DELIVER, at baseline, 77% of patients were treated with ACEi, ARB or ARNI, 83% with beta-blocker, 43% with MRA and 98% with diuretic. History of type 2 diabetes mellitus was present in 45% of the patients. At baseline of the patients with type 2 diabetes mellitus, 58% were treated with metformin HCl (809 patients on dapagliflozin 10 mg and 832 on placebo) and 30% were treated with insulin.

In DELIVER, the mean age of the type 2 diabetes mellitus population was 71 years, 58% were male, 73% White, 3% Black or African American and 18% Asian. At baseline, 74% patients were classified as NYHA class II, 26% class III and 0.4% class IV, 35% of the patients had LVEF $\leq 49\%$, 36% had LVEF 50-59% and 29% had LVEF $\geq 60\%$. In the type 2 diabetes mellitus population, 80% were treated with ACEi, ARB or ARNI, 84% with beta-

blocker, 40% with MRA, and 98% with diuretic. In these patients, mean eGFR was 59 mL/min/1.73 m².

In both trials, dapagliflozin reduced the incidence of the primary composite endpoint of CV death, hospitalization for heart failure or urgent heart failure visit in the overall population (see Table 20). All three components of the primary composite endpoint individually contributed to the treatment effect. In both trials, the dapagliflozin and placebo event curves separated early and continued to diverge over the trial period (see Figure 7).

Table 20: Treatment Effect for the Primary Composite Endpoint* and its Components* in the DAPA-HF and DELIVER Trials (Overall Population)

Efficacy Variable (Time to first occurrence)	DAPA-HF Trial				DELIVER Trial			
	Patients with events (event rate)		Hazard ratio (95% CI)	p-value†	Patients with events (event rate)		Hazard ratio (95% CI)	p-value†
	Dapa- gliflozin 10 mg N=2373	Placebo N=2371			Dapa- gliflozin 10 mg N=3131	Placebo N=3132		
Composite of Hospitalization for Heart Failure, CV Death‡ or Urgent Heart Failure Visit	386 (11.6)	502 (15.6)	0.74 (0.65, 0.85)	<0.0001	512 (7.8)	610 (9.6)	0.82 (0.73, 0.92)	0.0008
Components of the composite endpoints								
CV Death‡	227 (6.5)	273 (7.9)	0.82 (0.69, 0.98)		231 (3.3)	261 (3.8)	0.88 (0.74, 1.05)	
Hospitalization for Heart Failure or Urgent Heart Failure Visit	237 (7.1)	326 (10.1)	0.70 (0.59, 0.83)		368 (5.6)	455 (7.2)	0.79 (0.69, 0.91)	
Hospitalization for Heart Failure	231 (6.9)	318 (9.8)	0.70 (0.59, 0.83)		329 (5.0)	418 (6.5)	0.77 (0.67, 0.89)	
Urgent Heart Failure Visit	10 (0.3)	23 (0.7)	0.43 (0.20, 0.90)		60 (0.9)	78 (1.1)	0.76 (0.55, 1.07)	

N=Number of patients, CI=Confidence interval, CV=Cardiovascular.

* Full analysis set.

† Two-sided p-values.

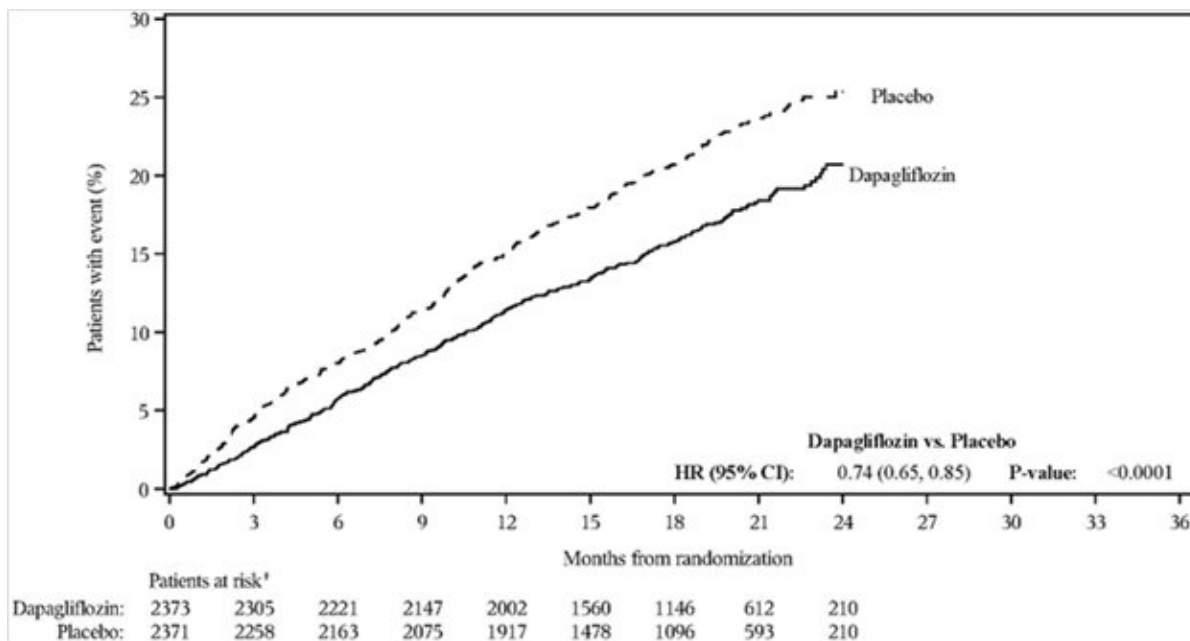
‡ In DAPA-HF, the CV death component of the primary endpoint included death of undetermined cause. In DELIVER, the CV death component of the primary endpoint excluded death of undetermined cause.

NOTE: Time to first event was analyzed in a Cox proportional hazards model. The number of first events for the single components are the actual number of first events for each component and does not add up to the number of events in the composite endpoint. Event rates are presented as the number of subjects with event per 100

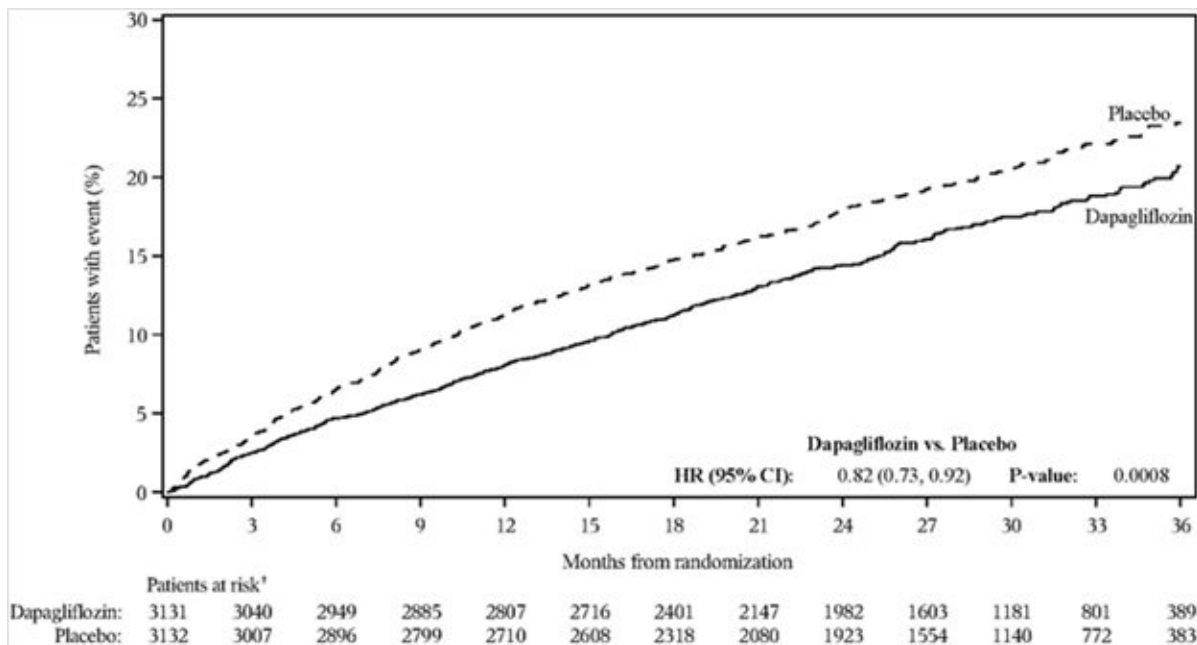
patient years of follow-up.

Figure 7: Time to the First Occurrence of the Composite of Cardiovascular Death*, Hospitalization for Heart Failure or Urgent Heart Failure Visit

A) DAPA-HF Trial



B) DELIVER Trial



NOTE: An urgent heart failure visit was defined as an urgent, unplanned, assessment by a physician, e.g., in an Emergency Department, and requiring treatment for worsening heart failure (other than just an increase in oral diuretics).

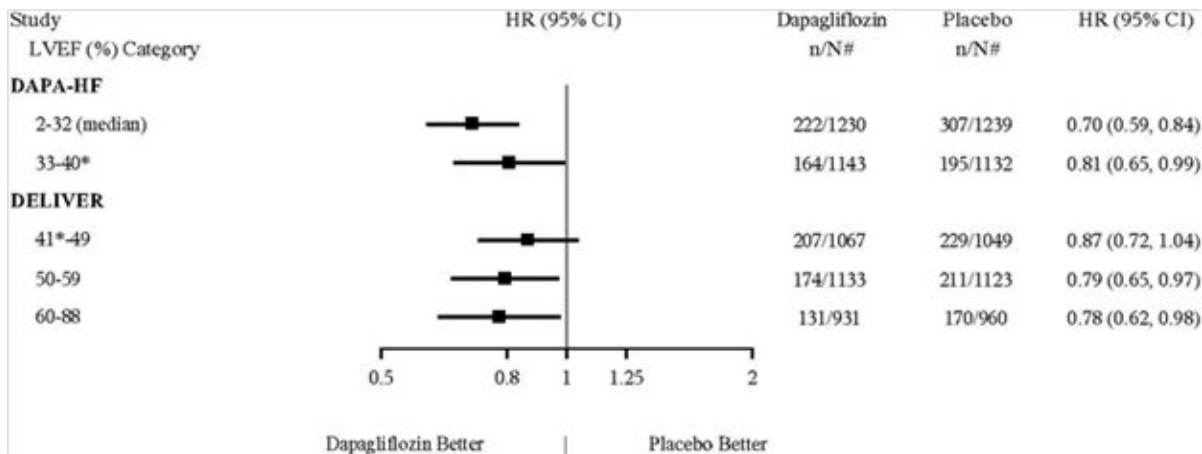
* In DAPA-HF, the CV death component of the primary endpoint included death of undetermined cause. In DELIVER, the CV death component of the primary endpoint excluded death of undetermined cause.

† Patients at risk is the number of patients at risk at the beginning of the period.

HR=Hazard ratio, CI=Confidence interval, CV=Cardiovascular.

The treatment effect of dapagliflozin on the composite endpoint of cardiovascular death, hospitalization for heart failure or urgent heart failure was consistent across the LVEF range as evaluated in DAPA-HF and DELIVER trials (Figure 8).

Figure 8: Treatment Effects for Primary Composite Endpoint (Cardiovascular Death and Heart Failure Events) by LVEF (DAPA-HF and DELIVER Trials)



* 1 patient in DAPA-HF trial had LVEF >40. 4 patients in DELIVER trial had LVEF ≤40.

In DAPA-HF trial, the 5% and 95% percentiles of LVEF were 20 and 40 respectively. In DELIVER trial, the 5% and 95% percentiles of LVEF were 42 and 70, respectively.

In DAPA-HF, the treatment benefit of dapagliflozin 10 mg in reducing the incidence of the primary composite endpoint was consistent in patients with type 2 diabetes mellitus [HR 0.75 (95% CI 0.63, 0.90)], and in patients with type 2 diabetes mellitus and metformin HCl as background therapy [HR 0.67 (95% CI 0.51, 0.88)].

In DELIVER, the treatment benefit of dapagliflozin 10 mg in reducing the incidence of the primary composite endpoint was consistent in patients with type 2 diabetes mellitus [HR 0.83 (95% CI 0.70, 0.97)].

In DELIVER, the hazard ratio of treatment benefit of dapagliflozin 10 mg in reducing the incidence of the primary composite endpoint in patients with type 2 diabetes mellitus and metformin HCl as background therapy was 0.90 (95% CI 0.72, 1.12).

16 HOW SUPPLIED/STORAGE AND HANDLING

How Supplied

XIGDUO® XR (dapagliflozin and metformin HCl extended-release) tablets have markings on one side, are plain on the reverse side, and are available in the strengths and packages listed in Table 21.

Table 21: XIGDUO XR Tablet Presentations

Tablet Strength	Film-Coated Tablet Color/Shape	Tablet Markings	Pack Size	NDC Code
2.5 mg/ 1,000 mg	Light brown to brown, biconvex, oval-shaped	"1074" and "2.5/1000" debossed on one side and plain on the reverse side	Bottle of 60	0310-6225-60
5 mg/ 500 mg	orange, biconvex, capsule-shaped	"1070" and "5/500" debossed on one side and plain on the reverse side	Bottle of 30	0310-6250-30
5 mg/ 1,000 mg	pink to dark pink, biconvex, oval-shaped	"1071" and "5/1000" debossed on one side and plain on the reverse side	Bottle of 60	0310-6260-60
10 mg/ 500 mg	pink, biconvex, capsule-shaped	"1072" and "10/500" debossed on one side and plain on the reverse side	Bottle of 30	0310-6270-30
10 mg/ 1,000 mg	yellow to dark yellow, biconvex, oval-shaped	"1073" and "10/1000" debossed on one side and plain on the reverse side	Bottle of 30	0310-6280-30

Storage and Handling

Store at 20°C to 25°C (68°F to 77°F); excursions permitted between 15°C and 30°C (59°F and 86°F) [see USP Controlled Room Temperature].

17 PATIENT COUNSELING INFORMATION

Advise the patient to read the FDA-approved patient labeling (Medication Guide).

Lactic Acidosis

Inform patients of the risks of lactic acidosis due to the metformin component and its symptoms and conditions that predispose to its development [see *Warnings and Precautions (5.1)*]. Advise patients to discontinue XIGDUO XR immediately and to promptly notify their healthcare provider if unexplained hyperventilation, myalgia, malaise, unusual somnolence, dizziness, slow or irregular heartbeat, sensation of feeling cold (especially in the extremities), or other non-specific symptoms occur.

Gastrointestinal symptoms are common during initiation of metformin treatment and may occur during initiation of XIGDUO XR therapy; however, inform patients to consult their physician if they develop unexplained symptoms. Although gastrointestinal symptoms that occur after stabilization are unlikely to be drug related, such an occurrence of symptoms should be evaluated to determine if it may be due to lactic acidosis or other serious disease.

Counsel patients against excessive alcohol intake while receiving XIGDUO XR [see *Warnings and Precautions (5.1)*].

Inform patients about the importance of regular testing of renal function and hematological parameters when receiving treatment with XIGDUO XR [see *Contraindications (4) and Warnings and Precautions (5.1)*].

Instruct patients to inform their healthcare provider that they are taking XIGDUO XR prior to any surgical or radiological procedure, as temporary discontinuation of XIGDUO XR may be required until renal function has been confirmed to be normal [see *Warnings and Precautions (5.1)*].

Diabetic Ketoacidosis in Patients with Type 1 Diabetes Mellitus and Other Ketoacidosis

Inform patients that XIGDUO XR can cause potentially fatal ketoacidosis and that type 2 diabetes mellitus and pancreatic disorders (e.g., history of pancreatitis or pancreatic surgery) are risk factors.

Educate all patients on precipitating factors (such as insulin dose reduction or missed insulin doses, infection, reduced caloric intake, ketogenic diet, surgery, dehydration, and alcohol abuse) and symptoms of ketoacidosis (including nausea, vomiting, abdominal pain, tiredness, and labored breathing). Inform patients that blood glucose may be normal even in the presence of ketoacidosis.

Advise patients that they may be asked to monitor ketones. If symptoms of ketoacidosis occur, instruct patients to discontinue XIGDUO XR and seek medical attention immediately [see *Warnings and Precautions (5.2)*].

Volume Depletion

Inform patients that symptomatic hypotension may occur with XIGDUO XR and advise them to contact their healthcare provider if they experience such symptoms [see *Warnings and Precautions (5.3)*]. Inform patients that dehydration may increase the risk for hypotension, and to have adequate fluid intake.

Serious Urinary Tract Infections

Inform patients of the potential for urinary tract infections, which may be serious. Provide them with information on the symptoms of urinary tract infections. Advise them to seek medical advice promptly if such symptoms occur [see *Warnings and Precautions (5.4)*].

Hypoglycemia with Concomitant Use of Insulin or Insulin Secretagogues

Inform patients that the incidence of hypoglycemia may increase when XIGDUO XR is added to an insulin secretagogue (e.g., sulfonylurea) and/or insulin. Educate patients on the signs and symptoms of hypoglycemia [see *Warnings and Precautions (5.5)*].

Necrotizing Fasciitis of the Perineum (Fournier's Gangrene)

Inform patients that necrotizing infections of the perineum (Fournier's Gangrene) have occurred with dapagliflozin, a component of XIGDUO XR. Counsel patients to promptly seek medical attention if they develop pain or tenderness, redness, or swelling of the genitals or the area from the genitals back to the rectum, along with a fever above 100.4°F or malaise [see *Warnings and Precautions (5.6)*].

Genital Mycotic Infections in Females (e.g., Vulvovaginitis)

Inform female patients that vaginal yeast infections may occur and provide them with information on the signs and symptoms of vaginal yeast infections. Advise them of treatment options and when to seek medical advice [see *Warnings and Precautions (5.8)*].

Genital Mycotic Infections in Males (e.g., Balanitis or Balanoposthitis)

Inform male patients that yeast infections of the penis (e.g., balanitis or balanoposthitis) may occur, especially in patients with prior history. Provide them with information on the signs and symptoms of balanitis and balanoposthitis (rash or redness of the glans or

foreskin of the penis). Advise them of treatment options and when to seek medical advice [see *Warnings and Precautions (5.8)*].

Hypersensitivity Reactions

Inform patients that serious hypersensitivity reactions (e.g., urticaria, anaphylactic reactions, and angioedema) have been reported with the components of XIGDUO XR. Advise patients to immediately report any signs or symptoms suggesting allergic reaction or angioedema, and to take no more of the drug until they have consulted prescribing physicians.

Pregnancy

Advise pregnant patients of the potential risk to a fetus with treatment with XIGDUO XR. Instruct patients to immediately inform their healthcare provider if pregnant or planning to become pregnant [see *Use in Specific Populations (8.1)*].

Lactation

Advise patients that use of XIGDUO XR is not recommended while breastfeeding [see *Use in Specific Populations (8.2)*].

Females and Males of Reproductive Potential

Inform female patients that treatment with metformin may result in an unintended pregnancy in some premenopausal anovulatory females due to its effect on ovulation [see *Use in Specific Populations (8.3)*].

Administration

Instruct patients that XIGDUO XR must be swallowed whole and not crushed or chewed, and that the inactive ingredients may occasionally be eliminated in the feces as a soft mass that may resemble the original tablet.

Laboratory Tests

Due to the mechanism of action of dapagliflozin, patients taking XIGDUO XR will test positive for glucose in their urine.

Missed Dose

If a dose is missed, advise patients to take it as soon as it is remembered unless it is almost time for the next dose, in which case patients should skip the missed dose and take the medicine at the next regularly scheduled time. Advise patients not to take two doses of XIGDUO XR at the same time.

FARXIGA® is a registered trademark of the AstraZeneca group of companies.

Distributed by:

AstraZeneca Pharmaceuticals LP

Wilmington, DE 19850

MEDICATION GUIDE

<p style="text-align: center;">MEDICATION GUIDE XIGDUO® XR [ZIG-DO-OH X-R] (dapagliflozin and metformin hydrochloride extended-release) tablets, for oral use</p>

What is the most important information I should know about XIGDUO XR?

XIGDUO XR can cause serious side effects, including:

- **Lactic Acidosis.** Metformin, one of the medicines in XIGDUO XR, can cause a rare but serious condition called lactic acidosis (a build-up of an acid in the blood) that can cause death. Lactic acidosis is a medical emergency and must be treated in the hospital.

Stop taking XIGDUO XR and call your healthcare provider right away if you have any of the following symptoms, which could be signs of lactic acidosis:

- o you feel cold in your hands or feet
- o you feel dizzy or lightheaded
- o you have a slow or irregular heartbeat
- o you feel very weak or tired
- o you have unusual (not normal) muscle pain
- o you have trouble breathing
- o you feel unusual sleepiness or sleep longer than usual
- o you have stomach pains, nausea or vomiting

Most people who have had lactic acidosis with metformin have other things that, combined with the metformin use, led to the lactic acidosis. Tell your healthcare provider if you have any of the following, because you have a higher chance for getting lactic acidosis with XIGDUO XR if you:

- o have severe kidney problems or your kidneys are affected by certain x-ray tests that use injectable dye.
- o have liver problems.
- o drink alcohol very often or drink a lot of alcohol in the short-term ("binge" drinking).
- o get dehydrated (lose a large amount of body fluids). This can happen if you are sick with a fever, vomiting, or diarrhea. Dehydration can also happen when you sweat a lot with activity or exercise and do not drink enough fluids.
- o have surgery.
- o have new or worsening symptoms of congestive heart failure such as shortness of breath or increased fluid or swelling of the legs.
- o have a heart attack, severe infection, or stroke.
- o are 65 years of age or older.

The best way to keep from having a problem with lactic acidosis from metformin is to tell your healthcare provider if you have any of the problems in the list above. Your healthcare provider may decide to stop your XIGDUO XR for a while if you have any of these things.

- **Diabetic Ketoacidosis (increased ketones in your blood or urine)** in people with type 1 diabetes and other ketoacidosis. XIGDUO XR can cause ketoacidosis that can be life-threatening and may lead to death. Ketoacidosis is a serious condition which needs to be treated in a hospital. People with type 1 diabetes have a high risk of getting ketoacidosis. People with type 2 diabetes or pancreas problems also have an increased risk of getting ketoacidosis. Ketoacidosis can also happen in people who are sick, cannot eat or drink as usual, skip meals, are on a diet high in fat and low in carbohydrates (ketogenic diet), take less than the usual amount of insulin or miss insulin doses, drink too much alcohol, have a loss of too much fluid from the body (volume depletion), or who have surgery or a procedure

that requires not having food for a long time (prolonged fasting). Ketoacidosis can happen even if your blood sugar is less than 250 mg/dL. Your healthcare provider may ask you to periodically check ketones in your urine or blood.

Stop taking XIGDUO XR and call your healthcare provider or get medical help right away if you get any of the following. If possible, check for ketones in your urine or blood, even if your blood sugar is less than 250 mg/dL.

- o nausea
- o vomiting
- o stomach area (abdominal) pain
- o tiredness
- o trouble breathing
- o ketones in your urine or blood

XIGDUO XR can have other serious side effects. See **“What are the possible side effects of XIGDUO XR?”**

What is XIGDUO XR?

- XIGDUO XR is a prescription medicine that contains 2 medicines called dapagliflozin (FARXIGA) and metformin HCl.
- XIGDUO XR can be used along with diet and exercise to improve blood sugar (glucose) in adults and children who are 10 years of age and older with type 2 diabetes.
- One of the medicines in XIGDUO XR, dapagliflozin (FARXIGA), can also be used in adults with type 2 diabetes who have:
 - chronic kidney disease and dapagliflozin is needed to reduce the risk of further worsening of your kidney disease, end-stage kidney disease (ESKD), death due to cardiovascular disease, and hospitalization for heart failure.
 - heart failure (when the heart cannot pump enough blood to the rest of your body) and dapagliflozin is needed to reduce the risk of cardiovascular death, hospitalization for heart failure and urgent heart failure visit.
 - known cardiovascular disease or multiple cardiovascular risk factors and dapagliflozin is needed to reduce the risk of hospitalization for heart failure.
- XIGDUO XR is not for use to improve blood sugar (glucose) control in people with type 1 diabetes.
- XIGDUO XR is only for use in people with type 2 diabetes mellitus, because it contains the prescription medicine metformin HCl.
- XIGDUO XR is not for use for treatment of chronic kidney disease in people with certain genetic forms of polycystic kidney disease, or who are taking or have recently received immunosuppressive therapy to treat kidney disease. If you have these conditions, XIGDUO XR is not expected to work for treatment of chronic kidney disease.
- It is not known if XIGDUO XR is safe and effective to lower blood sugar (glucose) in children younger than 10 years of age with type 2 diabetes mellitus.
- It is not known if XIGDUO XR is safe and effective for treatment of heart failure or chronic kidney disease in children younger than 18 years of age.

Who should not take XIGDUO XR?

Do not take XIGDUO XR if you:

- have severe kidney problems.
- are allergic to dapagliflozin, metformin HCl, or any of the ingredients in XIGDUO XR. See the end of this Medication Guide for a complete list of ingredients in XIGDUO

XR. Symptoms of a **serious** allergic reaction to XIGDUO XR may include:

- o rash
- o raised red patches on your skin (hives)
- o swelling of the face, lips, tongue, and throat that may cause difficulty in breathing or swallowing.

If you have any of these symptoms, stop taking XIGDUO XR and contact your healthcare provider or go to the nearest hospital emergency room right away.

- have a condition called metabolic acidosis or diabetic ketoacidosis (increased ketones in your blood or urine).

What should I tell my healthcare provider before taking XIGDUO XR?

Before you take XIGDUO XR, tell your healthcare provider if you:

- have type 1 diabetes or have had diabetic ketoacidosis.
- have a decrease in your insulin dose.
- have a serious infection.
- have a history of infection of the vagina or penis.
- have kidney problems.
- have liver problems.
- have a history of urinary tract infections or problems with urination.
- are on a low sodium (salt) diet. Your healthcare provider may ask you to change your diet.
- have heart problems, including congestive heart failure.
- are 65 years of age or older.
- are going to have surgery or a procedure that requires not having food for a long time (prolonged fasting). Your healthcare provider may stop XIGDUO XR before you have surgery. Talk to your healthcare provider if you are having surgery about when to stop taking XIGDUO XR and when to start it again.
- are eating less, or there is a change in your diet.
- are dehydrated.
- have or have had problems with your pancreas, including pancreatitis or surgery on your pancreas.
- drink alcohol very often or drink a lot of alcohol in the short-term (“binge” drinking).
- are going to get an injection of dye or contrast agents for an x-ray procedure. XIGDUO XR may need to be stopped for a short time. Talk to your healthcare provider about when you should stop XIGDUO XR and when you should start XIGDUO XR again. See “**What is the most important information I should know about XIGDUO XR?**”
- have low levels of vitamin B₁₂ in your blood.
- are pregnant or plan to become pregnant. XIGDUO XR may harm your unborn baby. If you are pregnant or plan to become pregnant, talk to your healthcare provider about the best way to control your blood sugar.
- are breastfeeding or plan to breastfeed. It is not known if XIGDUO XR passes into your breast milk. Talk with your healthcare provider about the best way to feed your baby if you are taking XIGDUO XR. You should not breastfeed if you take XIGDUO XR.
- are a person who has not gone through menopause (premenopausal) who does not have periods regularly or at all. XIGDUO XR can cause the release of an egg from an ovary in a person (ovulation). This can increase your chance of getting pregnant. Tell your healthcare provider right away if you become pregnant while taking XIGDUO XR.

Tell your healthcare provider about all the medicines you take, including prescription and over-the-counter medicines, vitamins, and herbal supplements. XIGDUO XR may affect the way other medicines work and other medicines may affect the way XIGDUO XR works.

Know the medicines you take. Keep a list of them and show it to your healthcare provider and pharmacist when you get a new medicine.

How should I take XIGDUO XR?

- Take XIGDUO XR exactly as your healthcare provider tells you to take it.
- Your healthcare provider will tell you how much XIGDUO XR to take and when to take it. Your healthcare provider may change your dose if needed.
- Take XIGDUO XR by mouth 1 time each day with meals to lower your chance of an upset stomach. Talk to your healthcare provider about the best time of day for you.
- Swallow XIGDUO XR whole. Do not crush, cut, or chew XIGDUO XR.
- You may sometimes pass a soft mass in your stools (bowel movement) that looks like XIGDUO XR tablets.
- If you miss a dose of XIGDUO XR, take it as soon as you remember. If it is almost time for your next dose, skip the missed dose and take the medicine at the next regularly scheduled time. Do not take 2 doses of XIGDUO XR at the same time. Talk with your healthcare provider if you have questions about a missed dose.
- If you take too much XIGDUO XR, call your healthcare provider or Poison Help line at 1-800-222-1222, or go to the nearest hospital emergency room right away.
- When your body is under some types of stress, such as fever, trauma (such as a car accident), infection, or surgery, the amount of diabetes medicine you need may change. Tell your healthcare provider right away if you have any of these conditions and follow your healthcare provider's instructions.
- Your healthcare provider may tell you to stop taking XIGDUO XR at least 3 days before any surgery or procedure that requires not having food or water for a long time (prolonged fasting).
- Your healthcare provider may tell you to take XIGDUO XR along with other diabetes medicines. Low blood sugar can happen more often when XIGDUO XR is taken with certain other diabetes medicines. See "**What are the possible side effects of XIGDUO XR?**".
- XIGDUO XR will cause your urine to test positive for glucose.
- Your healthcare provider may do certain blood tests before you start XIGDUO XR and during treatment as needed. Your healthcare provider may change your dose of XIGDUO XR based on the results of your blood tests.

What should I avoid while taking XIGDUO XR?

- Avoid drinking alcohol very often or drinking a lot of alcohol in a short period of time ("binge" drinking). It can increase your chances of getting serious side effects.

What are the possible side effects of XIGDUO XR?

XIGDUO XR may cause serious side effects including:

See "**What is the most important information I should know about XIGDUO XR?**".

- **Dehydration.** XIGDUO XR can cause some people to become dehydrated (the loss of body water and salt). Dehydration may cause you to feel dizzy, faint, lightheaded, or weak, especially when you stand up (orthostatic hypotension).

There have been reports of sudden kidney injury in people with type 2 diabetes mellitus who are taking dapagliflozin, a medicine in XIGDUO XR.

You may be at a higher risk of dehydration if you:

- o take medicines to lower your blood pressure, including water pills (diuretics)
- o are on a low salt diet
- o have kidney problems
- o are 65 years of age or older

Talk to your healthcare provider about what you can do to prevent dehydration including how much fluid you should drink on a daily basis. Call your healthcare provider right away if you reduce the amount of food or liquid you drink, for example if you cannot eat or you start to lose liquids from your body, for example from vomiting, diarrhea, or being in the sun too long.

- **Serious urinary tract infections.** Serious urinary tract infections that may lead to hospitalization have happened in people who are taking dapagliflozin, one of the medicines in XIGDUO XR. Tell your healthcare provider if you have any signs or symptoms of a urinary tract infection, such as a burning feeling when passing urine, a need to urinate often, the need to urinate right away, pain in the lower part of your stomach (pelvis), or blood in the urine. Sometimes people also may have a fever, back pain, nausea or vomiting.
- **Low blood sugar (hypoglycemia).** If you take XIGDUO XR with another medicine that can cause low blood sugar, such as sulfonylureas or insulin, your risk of getting low blood sugar is higher. The dose of your sulfonylurea medicine or insulin may need to be lowered while you take XIGDUO XR. Signs and symptoms of low blood sugar may include:

- o headache
- o confusion
- o hunger
- o shaking or feeling jittery
- o drowsiness
- o dizziness
- o fast heartbeat
- o weakness
- o sweating
- o irritability

- **A rare but serious bacterial infection that causes damage to the tissue under the skin (necrotizing fasciitis) in the area between and around the anus and genitals (perineum).** Necrotizing fasciitis of the perineum has happened in women and men who take dapagliflozin, one of the medicines in XIGDUO XR. Necrotizing fasciitis of the perineum may lead to hospitalization, may require multiple surgeries and may lead to death. **Seek medical attention right away if you have a fever or you are feeling very weak, tired or uncomfortable (malaise) and you develop any of the following symptoms in the area between and around the anus and genitals:**

- o pain or tenderness
- o swelling
- o redness of skin (erythema)

- **Serious allergic reaction.** If you have any symptoms of a serious allergic reaction, stop taking XIGDUO XR and call your healthcare provider right away or go to the nearest hospital emergency room. See **“Who should not take XIGDUO XR?”**. Your healthcare provider may give you a medicine for your allergic reaction and prescribe a different medicine for your diabetes.

- **Low vitamin B₁₂ (vitamin B₁₂ deficiency).** Using metformin for long periods of time may cause a decrease in the amount of vitamin B₁₂ in your blood, especially if you have had low vitamin B₁₂ levels before. Your healthcare provider may do blood tests to check your vitamin B₁₂ levels.
- **Vaginal yeast infection.** Women who take XIGDUO XR may get vaginal yeast infections. Symptoms of a vaginal yeast infection include:
 - o vaginal odor
 - o white or yellowish vaginal discharge (discharge may be lumpy or look like cottage cheese)
 - o vaginal itching
- **Yeast infection of the penis (balanitis).** Men who take XIGDUO XR may get a yeast infection of the skin around the penis. Men who are not circumcised may have swelling of the penis that makes it difficult to pull back the skin around the tip of the penis. Other symptoms of a yeast infection of the penis include:
 - o redness, itching, or swelling of the penis
 - o foul smelling discharge from the penis
 - o rash of the penis
 - o pain in the skin around the penis

Talk to your healthcare provider about what to do if you get symptoms of a yeast infection of the vagina or penis. Your healthcare provider may suggest you use an over-the-counter antifungal medicine. Talk to your healthcare provider right away if you use an over-the-counter antifungal medicine and your symptoms do not go away.

The most common side effects of XIGDUO XR include:

- o vaginal yeast infections
- o diarrhea
- o headache
- o stuffy or runny nose and sore throat
- o urinary tract infection

Tell your healthcare provider or pharmacist if you have any side effect that bothers you or does not go away.

These are not all of the possible side effects of XIGDUO XR. For more information, ask your healthcare provider or pharmacist.

Call your doctor for medical advice about side effects. You may report side effects to FDA at 1-800-FDA-1088.

How should I store XIGDUO XR?

Store XIGDUO XR at room temperature between 68°F and 77°F (20°C and 25°C).

Keep XIGDUO XR and all medicines out of the reach of children.

General information about the safe and effective use of XIGDUO XR.

Medicines are sometimes prescribed for purposes other than those listed in a Medication Guide. Do not use XIGDUO XR for a condition for which it is not prescribed. Do not give XIGDUO XR to other people, even if they have the same symptoms you have. It may harm them.

This Medication Guide summarizes the most important information about XIGDUO XR. If you would like more information, talk to your healthcare provider. You can ask your pharmacist or healthcare provider for information about XIGDUO XR that is written for health professionals.

For more information, go to www.xigduoxr.com or call 1-800-236-9933

What are the ingredients in XIGDUO XR?

Active ingredients: dapagliflozin and metformin hydrochloride

Inactive ingredients: anhydrous lactose, carboxymethylcellulose sodium, crospovidone, hypromellose, magnesium stearate, microcrystalline cellulose, and silicon dioxide.

The film coatings contain the following inactive ingredients: polyethylene glycol, polyvinyl alcohol, talc, and titanium dioxide. Additionally, the film coating for the XIGDUO XR 5 mg/500 mg tablets contains FD&C Yellow No. 6/Sunset Yellow FCF aluminum lake and the film coating for the XIGDUO XR 2.5 mg/1000 mg, 5 mg/1000 mg, 10 mg/500 mg, and 10 mg/1000 mg tablets contains iron oxides.

Distributed by: AstraZeneca Pharmaceuticals LP Wilmington, DE 19850

This Medication Guide has been approved by the U.S. Food and Drug Administration.

Revised: 12/2024

PACKAGE/LABEL PRINCIPAL DISPLAY PANEL - 2.5 mg/1000 mg

60 Tablets NDC 0310-6225-60

xigduo[®] XR

(dapagliflozin/metformin HCl

extended-release) tablets

2.5 mg/1000 mg

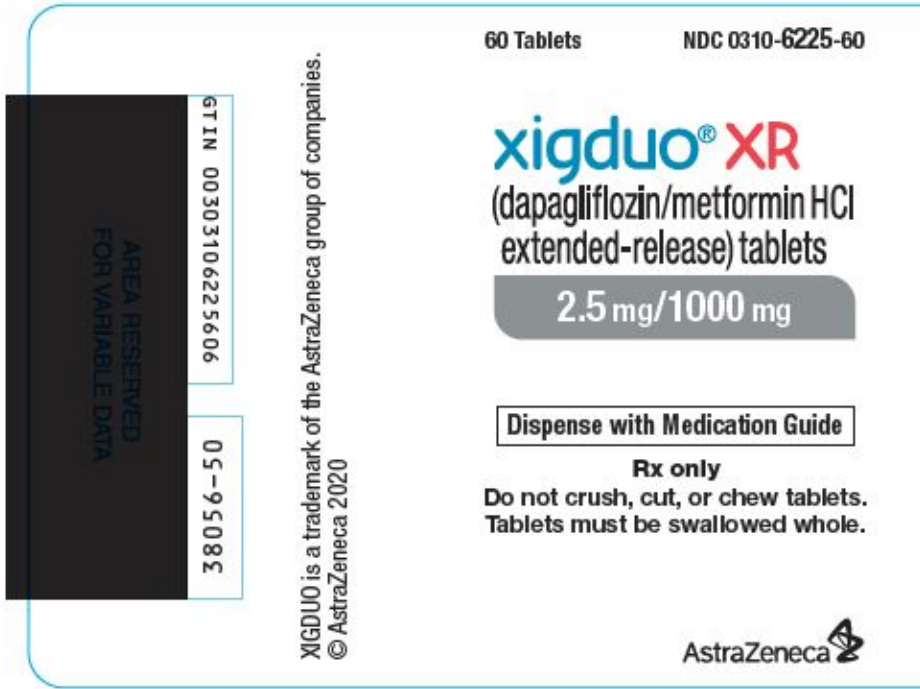
Dispense with Medication Guide

Rx only

Do not crush, cut, or chew tablets.

Tablets must be swallowed whole.

AstraZeneca



PACKAGE/LABEL PRINCIPAL DISPLAY PANEL - 5 mg/500 mg

30 Tablets NDC 0310-6250-30

xigduo® XR

(dapagliflozin/metformin HCl
extended-release) tablets

5 mg/500 mg

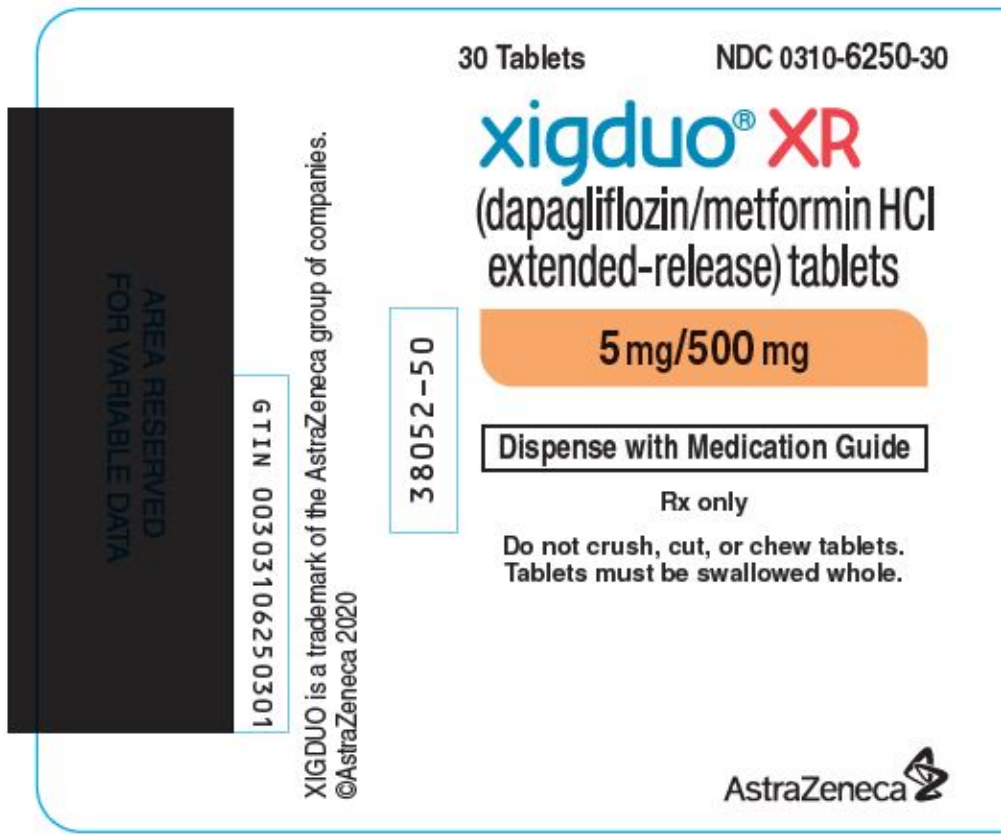
Dispense with Medication Guide

Rx only

Do not crush, cut, or chew tablets.

Tablets must be swallowed whole.

AstraZeneca



PACKAGE/LABEL PRINCIPAL DISPLAY PANEL - 5 mg/1000 mg

60 Tablets NDC 0310-6260-60

xigduo[®] XR

(dapagliflozin/metformin HCl
extended-release) tablets

5 mg/1000 mg

Dispense with Medication Guide

Rx only

Do not crush, cut, or chew tablets.

Tablets must be swallowed whole.

AstraZeneca

60 Tablets
NDC 0310-6260-60

AREA RESERVED
FOR VARIABLE DATA

GTIN 00303106260607

38055-50

XIGDUO is a trademark of the AstraZeneca group of companies.
©AstraZeneca 2020

xigduo[®] XR


(dapagliflozin/metformin HCl
extended-release) tablets

5 mg/1000 mg

Dispense with Medication Guide

Rx only

Do not crush, cut, or chew tablets.
Tablets must be swallowed whole.



PACKAGE/LABEL PRINCIPAL DISPLAY PANEL - 10 mg/500 mg

30 Tablets NDC 0310-6270-30

xigduo[®] XR

(dapagliflozin/metformin HCl
extended-release) tablets

10 mg/500 mg

Dispense with Medication Guide

Rx only

Do not crush, cut, or chew tablets.

Tablets must be swallowed whole.

AstraZeneca



PACKAGE/LABEL PRINCIPAL DISPLAY PANEL - 10 mg/1000 mg

30 Tablets NDC 0310-6280-30

xigduo® XR

(dapagliflozin/metformin HCl
extended-release) tablets

10 mg/1000 mg

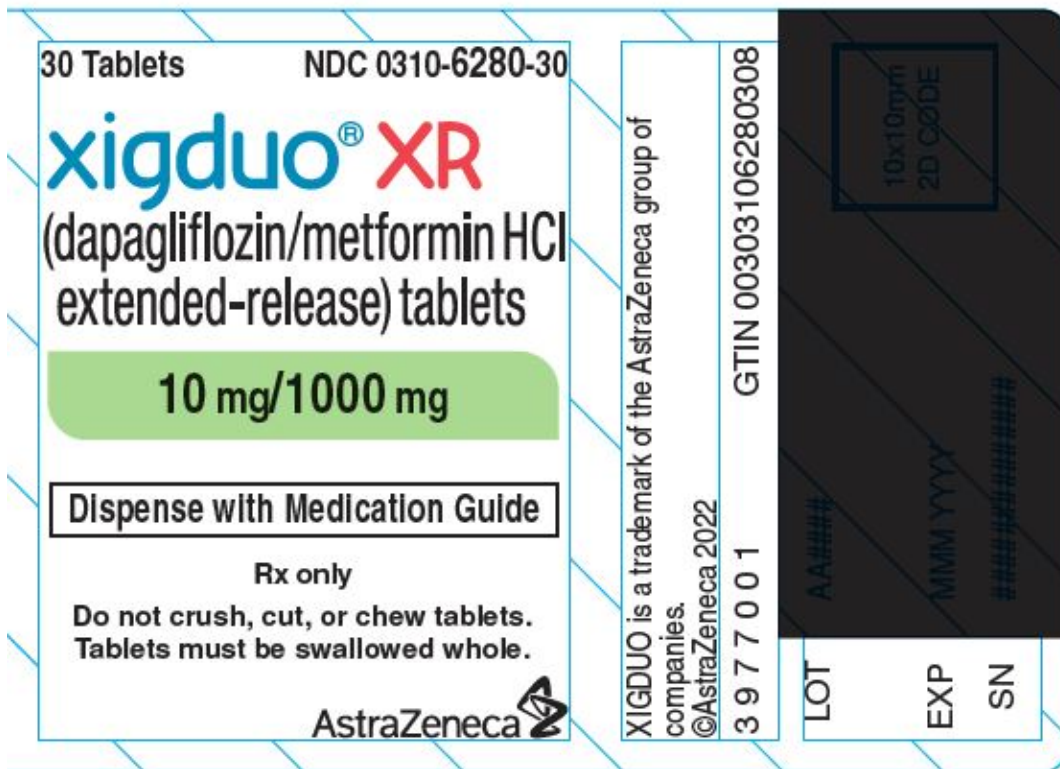
Dispense with Medication Guide

Rx only

Do not crush, cut, or chew tablets.

Tablets must be swallowed whole.

AstraZeneca



XIGDUO XR

dapagliflozin and metformin hydrochloride tablet, film coated, extended release

Product Information

Product Type	HUMAN PRESCRIPTION DRUG	Item Code (Source)	NDC:0310-6270
Route of Administration	ORAL		

Active Ingredient/Active Moiety

Ingredient Name	Basis of Strength	Strength
DAPAGLIFLOZIN PROPANEDIOL (UNII: 887K2391VH) (dapagliflozin - UNII:1ULL0QJ8UC)	dapagliflozin	10 mg
METFORMIN HYDROCHLORIDE (UNII: 786Z46389E) (metformin - UNII:9100L32L2N)	METFORMIN HYDROCHLORIDE	500 mg

Inactive Ingredients

Ingredient Name	Strength
anhydrous lactose (UNII: 3SY5LH9PMK)	
CARBOXYMETHYLCELLULOSE SODIUM, UNSPECIFIED (UNII: K679OBS311)	
CROSPVIDONE, UNSPECIFIED (UNII: 2S7830E561)	
HYPROMELLOSE 2208 (100000 MPA.S) (UNII: VM7F0B23ZI)	
magnesium stearate (UNII: 70097M6I30)	
MICROCRYSTALLINE CELLULOSE (UNII: OP1R32D61U)	
silicon dioxide (UNII: ETJ7Z6XBU4)	

Product Characteristics

Color	PINK	Score	no score
Shape	OVAL (capsule-shaped)	Size	20mm
Flavor		Imprint Code	1072;10;500
Contains			

Packaging

#	Item Code	Package Description	Marketing Start Date	Marketing End Date
1	NDC:0310-6270-30	30 in 1 BOTTLE, PLASTIC; Type 0: Not a Combination Product	11/11/2014	
2	NDC:0310-6270-95	1 in 1 CARTON	11/11/2014	07/31/2023
2		7 in 1 BLISTER PACK; Type 0: Not a Combination Product		

Marketing Information

Marketing Category	Application Number or Monograph Citation	Marketing Start Date	Marketing End Date
NDA	NDA205649	10/29/2014	

XIGDUO XR

dapagliflozin and metformin hydrochloride tablet, film coated, extended release

Product Information

Product Type	HUMAN PRESCRIPTION DRUG	Item Code (Source)	NDC:0310-6280
Route of Administration	ORAL		

Active Ingredient/Active Moiety

Ingredient Name	Basis of Strength	Strength
DAPAGLIFLOZIN PROPANEDIOL (UNII: 887K2391VH) (dapagliflozin - UNII:1ULL0QJ8UC)	dapagliflozin	10 mg
METFORMIN HYDROCHLORIDE (UNII: 786Z46389E) (metformin - UNII:9100L32L2N)	METFORMIN HYDROCHLORIDE	1000 mg

Inactive Ingredients

Ingredient Name	Strength
anhydrous lactose (UNII: 3SY5LH9PMK)	
CARBOXYMETHYLCELLULOSE SODIUM, UNSPECIFIED (UNII: K679OBS311)	
CROSPVIDONE, UNSPECIFIED (UNII: 2S7830E561)	
HYPROMELLOSE 2208 (100000 MPA.S) (UNII: VM7F0B23ZI)	
magnesium stearate (UNII: 70097M6I30)	
MICROCRYSTALLINE CELLULOSE (UNII: OP1R32D61U)	
silicon dioxide (UNII: ETJ7Z6XBU4)	

Product Characteristics

Color	YELLOW (yellow to dark yellow)	Score	no score
--------------	--------------------------------	--------------	----------

Shape	OVAL	Size	20mm
Flavor		Imprint Code	1073;10;1000
Contains			

Packaging

#	Item Code	Package Description	Marketing Start Date	Marketing End Date
1	NDC:0310-6280-30	30 in 1 BOTTLE, PLASTIC; Type 0: Not a Combination Product	11/11/2014	
2	NDC:0310-6280-95	1 in 1 CARTON	11/11/2014	
2		7 in 1 BLISTER PACK; Type 0: Not a Combination Product		

Marketing Information

Marketing Category	Application Number or Monograph Citation	Marketing Start Date	Marketing End Date
NDA	NDA205649	10/29/2014	

XIGDUO XR

dapagliflozin and metformin hydrochloride tablet, film coated, extended release

Product Information

Product Type	HUMAN PRESCRIPTION DRUG	Item Code (Source)	NDC:0310-6250
Route of Administration	ORAL		

Active Ingredient/Active Moiety

Ingredient Name	Basis of Strength	Strength
DAPAGLIFLOZIN PROPANEDIOL (UNII: 887K2391VH) (dapagliflozin - UNII:1ULL0QJ8UC)	dapagliflozin	5 mg
METFORMIN HYDROCHLORIDE (UNII: 786Z46389E) (metformin - UNII:9100L32L2N)	METFORMIN HYDROCHLORIDE	500 mg

Inactive Ingredients

Ingredient Name	Strength
anhydrous lactose (UNII: 3SY5LH9PMK)	
CARBOXYMETHYLCELLULOSE SODIUM, UNSPECIFIED (UNII: K679OBS311)	
CROSPVIDONE, UNSPECIFIED (UNII: 2S7830E561)	
HYPROMELLOSE 2208 (100000 MPA.S) (UNII: VM7F0B23ZI)	
HYPROMELLOSE 2910 (5 MPA.S) (UNII: R75537T0T4)	
magnesium stearate (UNII: 70097M6I30)	
MICROCRYSTALLINE CELLULOSE (UNII: OP1R32D61U)	
silicon dioxide (UNII: ETJ7Z6XBU4)	

Product Characteristics

Color	ORANGE	Score	no score
--------------	--------	--------------	----------

Shape	OVAL (capsule-shaped)	Size	20mm
Flavor		Imprint Code	1070;5;500
Contains			

Packaging

#	Item Code	Package Description	Marketing Start Date	Marketing End Date
1	NDC:0310-6250-30	30 in 1 BOTTLE, PLASTIC; Type 0: Not a Combination Product	12/01/2014	
2	NDC:0310-6250-95	1 in 1 CARTON	12/01/2014	06/30/2023
2		7 in 1 BLISTER PACK; Type 0: Not a Combination Product		

Marketing Information

Marketing Category	Application Number or Monograph Citation	Marketing Start Date	Marketing End Date
NDA	NDA205649	10/29/2014	

XIGDUO XR

dapagliflozin and metformin hydrochloride tablet, film coated, extended release

Product Information

Product Type	HUMAN PRESCRIPTION DRUG	Item Code (Source)	NDC:0310-6260
Route of Administration	ORAL		

Active Ingredient/Active Moiety

Ingredient Name	Basis of Strength	Strength
DAPAGLIFLOZIN PROPANEDIOL (UNII: 887K2391VH) (dapagliflozin - UNII:1ULL0QJ8UC)	dapagliflozin	5 mg
METFORMIN HYDROCHLORIDE (UNII: 786Z46389E) (metformin - UNII:9100L32L2N)	METFORMIN HYDROCHLORIDE	1000 mg

Inactive Ingredients

Ingredient Name	Strength
anhydrous lactose (UNII: 3SY5LH9PMK)	
CARBOXYMETHYLCELLULOSE SODIUM, UNSPECIFIED (UNII: K679OBS311)	
CROSPVIDONE, UNSPECIFIED (UNII: 2S7830E561)	
HYPROMELLOSE 2208 (100000 MPA.S) (UNII: VM7F0B23ZI)	
HYPROMELLOSE 2910 (5 MPA.S) (UNII: R75537T0T4)	
magnesium stearate (UNII: 70097M6I30)	
MICROCRYSTALLINE CELLULOSE (UNII: OP1R32D61U)	
silicon dioxide (UNII: ETJ7Z6XBU4)	

Product Characteristics

Color	PINK (pink to dark pink)	Score	no score
--------------	--------------------------	--------------	----------

Shape	OVAL	Size	20mm
Flavor		Imprint Code	5;1000;1071
Contains			

Packaging

#	Item Code	Package Description	Marketing Start Date	Marketing End Date
1	NDC:0310-6260-30	30 in 1 BOTTLE, PLASTIC; Type 0: Not a Combination Product	11/11/2014	05/31/2018
2	NDC:0310-6260-60	60 in 1 BOTTLE, PLASTIC; Type 0: Not a Combination Product	11/11/2014	
3	NDC:0310-6260-94	2 in 1 CARTON	11/11/2014	10/31/2016
3		7 in 1 BLISTER PACK; Type 0: Not a Combination Product		
4	NDC:0310-6260-95	1 in 1 CARTON	11/11/2014	
4		7 in 1 BLISTER PACK; Type 0: Not a Combination Product		

Marketing Information

Marketing Category	Application Number or Monograph Citation	Marketing Start Date	Marketing End Date
NDA	NDA205649	10/29/2014	

XIGDUO XR

dapagliflozin and metformin hydrochloride tablet, film coated, extended release

Product Information

Product Type	HUMAN PRESCRIPTION DRUG	Item Code (Source)	NDC:0310-6225
Route of Administration	ORAL		

Active Ingredient/Active Moiety

Ingredient Name	Basis of Strength	Strength
DAPAGLIFLOZIN PROPANEDIOL (UNII: 887K2391VH) (dapagliflozin - UNII:1ULL0QJ8UC)	dapagliflozin	2.5 mg
METFORMIN HYDROCHLORIDE (UNII: 786Z46389E) (metformin - UNII:9100L32L2N)	METFORMIN HYDROCHLORIDE	1000 mg

Inactive Ingredients

Ingredient Name	Strength
anhydrous lactose (UNII: 3SY5LH9PMK)	
CARBOXYMETHYLCELLULOSE SODIUM, UNSPECIFIED (UNII: K679OBS311)	
CROSPVIDONE, UNSPECIFIED (UNII: 2S7830E561)	
HYPROMELLOSE 2208 (100000 MPA.S) (UNII: VM7F0B23ZI)	
HYPROMELLOSE 2910 (5 MPA.S) (UNII: R75537T0T4)	
magnesium stearate (UNII: 70097M6I30)	
MICROCRYSTALLINE CELLULOSE (UNII: OP1R32D61U)	

silicon dioxide (UNII: ETJ7Z6XBU4)

Product Characteristics

Color	BROWN (light brown to brown)	Score	no score
Shape	OVAL	Size	20mm
Flavor		Imprint Code	2;5;1000;1074
Contains			

Packaging

#	Item Code	Package Description	Marketing Start Date	Marketing End Date
1	NDC:0310-6225-60	60 in 1 BOTTLE, PLASTIC; Type 0: Not a Combination Product	01/15/2018	
2	NDC:0310-6225-94	1 in 1 CARTON	01/15/2018	01/31/2023
2		14 in 1 BLISTER PACK; Type 0: Not a Combination Product		

Marketing Information

Marketing Category	Application Number or Monograph Citation	Marketing Start Date	Marketing End Date
NDA	NDA205649	10/29/2014	

Labeler - AstraZeneca Pharmaceuticals LP (054743190)

Registrant - AstraZeneca PLC (230790719)

Revised: 12/2024

AstraZeneca Pharmaceuticals LP