

EZETIMIBE- ezetimibe tablet

Glenmark Pharmaceuticals Inc., USA

HIGHLIGHTS OF PRESCRIBING INFORMATION

These highlights do not include all the information needed to use EZETIMIBE TABLETS safely and effectively. See full prescribing information for EZETIMIBE TABLETS.

EZETIMIBE tablets, for oral use
Initial U.S. Approval: 2002

RECENT MAJOR CHANGES

Indications and Usage (1)	7/2023
Dosage and Administration (2)	7/2023
Contraindications (4)	7/2023
Warnings and Precautions (5.1, 5.2, 5.3)	7/2023

INDICATIONS AND USAGE

Ezetimibe tablets are indicated (1):

- In combination with a statin, or alone when additional low density lipoprotein cholesterol (LDL-C) lowering therapy is not possible, as an adjunct to diet to reduce elevated LDL-C in adults with primary hyperlipidemia, including heterozygous familial hypercholesterolemia (HeFH).
- In combination with a statin as an adjunct to diet to reduce elevated LDL-C in pediatric patients 10 years of age and older with HeFH.
- In combination with fenofibrate as an adjunct to diet to reduce elevated LDL C in adults with mixed hyperlipidemia.
- In combination with a statin, and other LDL-C lowering therapies, to reduce elevated LDL C levels in adults and in pediatric patients 10 years of age and older with homozygous familial hypercholesterolemia (HoFH).
- As an adjunct to diet for the reduction of elevated sitosterol and campesterol levels in adults and in pediatric patients 9 years of age and older with homozygous familial sitosterolemia. When ezetimibe tablets are used in combination with a statin, fenofibrate, or other LDL-C lowering therapies, refer to the Prescribing Information of these products for information on the safe and effective use (1).

DOSAGE AND ADMINISTRATION

- 10-mg o once daily, with or without food (2.1)
- Administer ezetimibe tablets either ≥ 2 hours before or ≥ 4 hours after administration of a bile acid sequestrant. (2)
- Assess LDL-C when clinically appropriate, as early as 4 weeks after initiating ezetimibe tablets. (2)

DOSAGE FORMS AND STRENGTHS

- Tablets: 10 mg (3)

CONTRAINDICATIONS

- Hypersensitivity to ezetimibe or any excipient of ezetimibe tablets. (4)
- When used in combination with a statin, fenofibrate, or other LDL-C lowering therapy, ezetimibe tablets are contraindicated in patients for whom a statin, fenofibrate, or other LDL-C lowering therapy are contraindicated. Refer to the Prescribing Information of these products for a list of their contraindications. (4)

WARNINGS AND PRECAUTIONS

- Risks Associated with Combination Treatment with a Statin, Fenofibrate, or Other LDL-C Lowering Therapies: Refer to the Prescribing Information of these products for a description of their risks including, but not limited to, the warnings and precautions. (5.1)
- Liver Enzyme Abnormalities and Monitoring: Increases in serum transaminases have been reported with use of ezetimibe tablets. Perform liver enzyme testing as clinically indicated and consider withdrawal of ezetimibe tablets if increases in ALT or AST ≥ 3 X ULN persist. (5.2)
- Skeletal Muscle Effects (e.g., Myopathy and Rhabdomyolysis): Ezetimibe tablets may cause myopathy

and rhabdomyolysis. In post-marketing reports, most patients who developed rhabdomyolysis were taking a statin or other agents known to be associated with an increased risk of rhabdomyolysis, such as fibrates. If myopathy is suspected, discontinue ezetimibe tablets and other concomitant medications, as appropriate. (5.3)

ADVERSE REACTIONS

- Common adverse reactions in clinical trials:
- Ezetimibe tablets administered alone (incidence $\geq 2\%$ and greater than placebo): upper respiratory tract infection, diarrhea, arthralgia, sinusitis, pain in extremity, fatigue, and influenza (6.1)
- Ezetimibe tablets coadministered with a statin (incidence $\geq 2\%$ and greater than statin alone): nasopharyngitis, myalgia, upper respiratory tract infection, arthralgia, diarrhea, back pain, influenza, pain in extremity, and fatigue (6.1)

To report SUSPECTED ADVERSE REACTIONS, contact Glenmark Pharmaceuticals Inc., USA at 1 (888) 721-7115 or FDA at 1-800-FDA-1088 or www.fda.gov/medwatch.

DRUG INTERACTIONS

- Cyclosporine: Combination increases exposure of ezetimibe and cyclosporine. Cyclosporine concentrations should be monitored in patients taking ezetimibe concomitantly. (7)
- Fibrates: Coadministration of ezetimibe with fibrates other than fenofibrate is not recommended until use in patients is adequately studied. If cholelithiasis is suspected in a patient receiving ezetimibe tablets and fenofibrate, gallbladder studies are indicated, and alternative lipid-lowering therapy should be considered. (7) Bile Acid Sequestrants: Cholestyramine combination decreases exposure of ezetimibe. (7)

See 17 for PATIENT COUNSELING INFORMATION and FDA-approved patient labeling.

Revised: 9/2023

FULL PRESCRIBING INFORMATION: CONTENTS*

1 INDICATIONS AND USAGE

2 DOSAGE AND ADMINISTRATION

3 DOSAGE FORMS AND STRENGTHS

4 CONTRAINDICATIONS

5 WARNINGS AND PRECAUTIONS

5.1 Risks Associated with Combination Treatment with a Statin, Fenofibrate, or Other LDL-C Lowering Therapies

5.2 Liver Enzymes

5.3 Myopathy/Rhabdomyolysis

6 ADVERSE REACTIONS

6.1 Clinical Trials Experience

6.2 Post-Marketing Experience

7 DRUG INTERACTIONS

8 USE IN SPECIFIC POPULATIONS

8.1 Pregnancy

8.2 Lactation

8.4 Pediatric Use

8.5 Geriatric Use

8.6 Renal Impairment

8.7 Hepatic Impairment

10 OVERDOSAGE

11 DESCRIPTION

12 CLINICAL PHARMACOLOGY

- 12.1 Mechanism of Action
- 12.2 Pharmacodynamics
- 12.3 Pharmacokinetics

13 NONCLINICAL TOXICOLOGY

- 13.1 Carcinogenesis, Mutagenesis, Impairment of Fertility

14 CLINICAL STUDIES

16 HOW SUPPLIED/STORAGE AND HANDLING

17 PATIENT COUNSELING INFORMATION

* Sections or subsections omitted from the full prescribing information are not listed.

FULL PRESCRIBING INFORMATION

1 INDICATIONS AND USAGE

Ezetimibe tablets are indicated:

- In combination with a statin, or alone when additional low-density lipoprotein cholesterol (LDL-C) lowering therapy is not possible, as an adjunct to diet to reduce elevated LDL-C in adults with primary hyperlipidemia, including heterozygous familial hypercholesterolemia (HeFH).
- In combination with a statin as an adjunct to diet to reduce elevated LDL-C in pediatric patients 10 years of age and older with HeFH.
- In combination with fenofibrate as an adjunct to diet to reduce elevated LDL-C in adults with mixed hyperlipidemia.
- In combination with a statin, and other LDL-C lowering therapies, to reduce elevated LDL-C levels in adults and in pediatric patients 10 years of age and older with homozygous familial hypercholesterolemia (HoFH).
- As an adjunct to diet for the reduction of elevated sitosterol and campesterol levels in adults and in pediatric patients 9 years of age and older with homozygous familial sitosterolemia.

When ezetimibe tablet is used in combination with a statin, fenofibrate, or other LDL-C lowering therapies, refer to the Prescribing Information of these products for information on the safe and effective use.

2 DOSAGE AND ADMINISTRATION

- The recommended dose of ezetimibe tablet is 10 mg orally once daily, administered with or without food.
- If a dose is missed, take the missed dose as soon as possible. Do not double the next dose.
- Assess LDL-C when clinically appropriate, as early as 4 weeks after initiating ezetimibe tablets.
- In patients taking a bile acid sequestrant, administer ezetimibe tablets at least 2 hours before or 4 hours after the bile acid sequestrant [*see Drug Interactions (7)*].

3 DOSAGE FORMS AND STRENGTHS

Tablets: 10-mg are white to off-white, capsule-shaped, flat, beveled edged tablets engraved with 'G80' on one side and plain on the other side.

4 CONTRAINDICATIONS

Ezetimibe tablets are contraindicated in patients with a known hypersensitivity to ezetimibe or any of the excipients in ezetimibe tablets. Hypersensitivity reactions including anaphylaxis, angioedema, rash, and urticaria have been reported [see *Adverse Reactions (6.2)*].

When used in combination with a statin, fenofibrate, or other LDL-C lowering therapy, ezetimibe tablets are contraindicated in patients for whom a statin, fenofibrate, or other LDL-C lowering therapy are contraindicated. Refer to the Prescribing Information of these products for a list of their contraindications [see *Warnings and Precautions (5.1)*].

5 WARNINGS AND PRECAUTIONS

5.1 Risks Associated with Combination Treatment with a Statin, Fenofibrate, or Other LDL-C Lowering Therapies

If ezetimibe tablets are administered with a statin, fenofibrate, or other LDL-C lowering therapies, refer to the Prescribing Information of these products for a description of their risks including, but not limited to, the warnings and precautions [see *Contraindications (4)*].

5.2 Liver Enzymes

Increases in serum transaminases have been reported with use of ezetimibe tablets [see *Adverse Reactions (6.1)*]. In controlled clinical combination studies of ezetimibe tablets initiated concurrently with a statin, the incidence of consecutive elevations (≥ 3 X ULN) in hepatic transaminase levels was 1.3% for patients treated with ezetimibe tablets administered with statins and 0.4% for patients treated with statins alone. Perform liver enzyme testing as clinically indicated and consider withdrawal of ezetimibe tablets if increases in ALT or AST ≥ 3 X ULN persist.

5.3 Myopathy/Rhabdomyolysis

Ezetimibe tablets may cause myopathy [muscle pain, tenderness, or weakness associated with elevated creatine kinase (CK)] and rhabdomyolysis [see *Adverse Reactions (6.1)*]. In post-marketing reports, most patients who developed rhabdomyolysis were taking a statin or other agents known to be associated with an increased risk of rhabdomyolysis, such as fibrates. If myopathy is suspected, discontinue ezetimibe tablets and other concomitant medications, as appropriate.

6 ADVERSE REACTIONS

The following serious adverse reactions are discussed in greater detail in other sections of the label:

- Liver enzyme abnormalities [see *Warnings and Precautions (5.2)*]
- Rhabdomyolysis and myopathy [see *Warnings and Precautions (5.3)*]

6.1 Clinical Trials Experience

Because clinical studies are conducted under widely varying conditions, adverse reaction rates observed in the clinical studies of a drug cannot be directly compared to rates in the clinical studies of another drug and may not reflect the rates observed in clinical practice.

Monotherapy

In 10 double-blind, placebo-controlled clinical trials, 2,396 patients with primary hyperlipidemia (age range 9 to 86 years, 50% female, 90% White, 5% Black or African American, 2% Asian 3% other races; 3% identified as Hispanic or Latino ethnicity) and elevated LDL-C were treated with ezetimibe 10 mg/day for a median treatment duration of 12 weeks (range 0 to 39 weeks).

Adverse reactions reported in $\geq 2\%$ of patients treated with ezetimibe and at an incidence greater than placebo in placebo-controlled studies of ezetimibe are shown in **Table 1**.

TABLE 1: Adverse Reactions Occurring $\geq 2\%$ and Greater than Placebo in Ezetimibe-treated Patients

Adverse Reaction	Placebo (%) n = 1,159	Ezetimibe Tablets 10 mg (%) n = 2,396
Upper respiratory tract infection	2.5	4.3
Diarrhea	3.7	4.1
Arthralgia	2.2	3.0
Sinusitis	2.2	2.8
Pain in extremity	2.5	2.7
Fatigue	1.5	2.4
Influenza	1.5	2.0

Combination with a Statin

In 28 double-blind, controlled (placebo or active-controlled) clinical trials, 11,308 patients with primary hyperlipidemia (age range 10 to 93 years, 48% female, 85% White, 7% Black or African American, 3% Asian, 5% other races; 4% identified as Hispanic or Latino ethnicity) and elevated LDL-C were treated with ezetimibe 10 mg/day concurrently with or added to on-going statin therapy for a median treatment duration of 8 weeks (range 0 to 112 weeks).

The incidence of consecutive increased transaminases ($\geq 3 \times$ ULN) was higher in patients receiving ezetimibe administered with statins (1.3%) than in patients treated with statins alone (0.4%).

Adverse reactions reported in $\geq 2\%$ of patients treated with ezetimibe + statin and at an incidence greater than statin are shown in **Table 2**.

TABLE 2: Adverse Reactions Occurring $\geq 2\%$ in Ezetimibe-treated Patients Coadministered with a Statin and at an Incidence Greater than Statin

Adverse Reaction	All Statins* (%) n = 9,361	Ezetimibe Tablets + All Statins* (%) n = 11,308
Nasopharyngitis	3.3	3.7
Myalgia	2.7	3.2
Upper respiratory tract infection	2.8	2.9
Arthralgia	2.4	2.6
Diarrhea	2.2	2.5
Back pain	2.3	2.4
Influenza	2.1	2.2
Pain in extremity	1.9	2.1
Fatigue	1.6	2.0

* All Statins = all doses of all statins

Combination with Fenofibrate

This clinical trial involving 625 patients with mixed dyslipidemia (age range 20 to 76 years, 44% female, 79% White, 1% Black or African American, 20% other races; 11% identified as Hispanic or Latino ethnicity) treated for up to 12 weeks and 576 patients treated for up to an additional 48 weeks evaluated coadministration of ezetimibe and fenofibrate. Incidence rates for clinically important elevations ($\geq 3 \times$ ULN, consecutive) in hepatic transaminase levels were 4.5% (1.9, 8.8) and 2.7% (1.2, 5.4) for fenofibrate monotherapy (n=188) and ezetimibe coadministered with fenofibrate (n=183), respectively, adjusted for treatment exposure. Corresponding incidence rates for cholecystectomy were 0.6% and 1.7% for fenofibrate monotherapy and ezetimibe coadministered with fenofibrate, respectively [see *Drug Interactions (7.3)*].

6.2 Post-Marketing Experience

Because the reactions below are reported voluntarily from a population of uncertain size, it is generally not possible to reliably estimate their frequency or establish a causal relationship to drug exposure.

The following additional adverse reactions have been identified during post-approval use of ezetimibe:

Blood Disorders: thrombocytopenia

Gastrointestinal Disorders: abdominal pain; pancreatitis; nausea

Hepatobiliary Disorders: elevations in liver transaminases; hepatitis; cholelithiasis; cholecystitis

Immune System Disorders: Hypersensitivity reactions including: anaphylaxis, angioedema, rash, and urticaria

Musculoskeletal Disorders: elevated creatine phosphokinase; myopathy/rhabdomyolysis

Nervous System Disorders: dizziness; paresthesia; depression; headache

Skin and Subcutaneous Tissue Disorders: erythema multiforme

7 DRUG INTERACTIONS

Table 3 includes a list of drugs with clinically important drug interactions when administered concomitantly with ezetimibe tablets and instructions for preventing or managing them.

Table 3: Clinically Important Drug Interactions with Ezetimibe

Cyclosporine	
<i>Clinical Impact:</i>	Concomitant use of ezetimibe and cyclosporine increases ezetimibe and cyclosporine concentrations. The degree of increase in ezetimibe exposure may be greater in patients with severe renal insufficiency [see <i>Clinical Pharmacology (12.3)</i>].
<i>Intervention:</i>	Monitor cyclosporine concentrations in patients receiving ezetimibe and cyclosporine. In patients treated with cyclosporine, weigh the

	potential effects of the increased exposure to ezetimibe from concomitant use against the benefits of alterations in lipid levels provided by ezetimibe.
Fibrates	
<i>Clinical Impact:</i>	Both fenofibrate and ezetimibe may increase cholesterol excretion into the bile, leading to cholelithiasis. Coadministration of ezetimibe with fibrates other than fenofibrate is not recommended [see <i>Adverse Reactions (6.1)</i>].
<i>Intervention:</i>	If cholelithiasis is suspected in a patient receiving ezetimibe and fenofibrate, gallbladder studies are indicated, and alternative lipid-lowering therapy should be considered.
Bile Acid Sequestrants	
<i>Clinical Impact:</i>	Concomitant cholestyramine administration decreased the mean exposure of total ezetimibe. This may result in a reduction of efficacy [see <i>Clinical Pharmacology (12.3)</i>].
<i>Intervention:</i>	In patients taking a bile acid sequestrant, administer ezetimibe at least 2 hours before or 4 hours after the bile acid sequestrant [see <i>Dosage and Administration (2)</i>].

8 USE IN SPECIFIC POPULATIONS

8.1 Pregnancy

Risk Summary

There are insufficient data on ezetimibe use in pregnant women to evaluate for a drug-associated risk of major birth defects, miscarriage or adverse maternal or fetal outcomes. In animal reproduction studies, no adverse developmental effects were observed in pregnant rats and rabbits orally administered ezetimibe during the period of organogenesis at doses that resulted in up to 10 and 150 times, respectively, the human exposure at the MRHD, based on AUC (see *Data*). Ezetimibe should be used during pregnancy only if the potential benefit justifies the potential risk to the fetus. When ezetimibe is administered with a statin, refer to the Prescribing Information for the statin.

The estimated background risk of major birth defects and miscarriage for the indicated population is unknown. In the U.S. general population, the estimated risk of major birth defects and miscarriage in clinically recognized pregnancies is 2 to 4% and 15 to 20%, respectively.

Data

Animal Data

In oral (gavage) embryo-fetal development studies of ezetimibe conducted in rats (gestation days 6-15) and rabbits (gestation days 7-19), there was no evidence of maternal toxicity or embryo-lethal effects at the doses tested (250, 500, 1,000 mg/kg/day). In rats, increased incidences of common fetal skeletal findings (extra pair of thoracic ribs, unossified cervical vertebral centra, shortened ribs) were observed at 1,000 mg/kg/day (~10 times the human exposure at 10 mg daily based on AUC_{0-24hr} for total ezetimibe). In rabbits treated with ezetimibe, an increased incidence of extra

thoracic ribs was observed at 1,000 mg/kg/day (150 times the human exposure at 10 mg daily based on AUC^{0-24hr} for total ezetimibe). The animal-to-human exposure multiple for total ezetimibe at the no-observed effect level was 6 times for rat and 134 times for rabbit. Fetal exposure to ezetimibe (conjugated and unconjugated) was confirmed in subsequent placental transfer studies conducted using a maternal dose of 1,000 mg/kg/day. The fetal maternal plasma exposure ratio (total ezetimibe) was 1.5 for rats on gestation day 20 and 0.03 for rabbits on gestation day 22.

The effect of ezetimibe on prenatal and postnatal development and maternal function was evaluated in pregnant rats at doses of 100, 300 or 1,000 mg/kg/day from gestation day 6 through lactation day 21. No maternal toxicity or adverse developmental outcomes were observed up to and including the highest dose tested (17 times the human exposure at 10 mg daily based on AUC^{0-24hr} for total ezetimibe).

Multiple-dose studies of ezetimibe given in combination with statins in rats and rabbits during organogenesis resulted in higher ezetimibe and statin exposures. Reproductive findings occurred at lower doses in combination therapy compared to monotherapy.

8.2 Lactation

Risk Summary

There is no information about the presence of ezetimibe in human milk. Ezetimibe is present in rat milk (*see Data*). When a drug is present in animal milk, it is likely that the drug will be present in human milk. There is no information about the effects of ezetimibe on the breastfed infant or the effects of ezetimibe on milk production. Ezetimibe should not be used in nursing mothers unless the potential benefit justifies the potential risk to the infant.

Data

Ezetimibe was present in the milk of lactating rats. The pup to maternal plasma ratio for total ezetimibe was 0.5 on lactation day 12.

8.4 Pediatric Use

The safety and effectiveness of ezetimibe in combination with a statin as an adjunct to diet to reduce LDL-C have been established in pediatric patients 10 years of age and older with HeFH. Use of ezetimibe for this indication is based on a double-blind, placebo-controlled clinical trial in 248 pediatric patients (142 males and 106 postmenarchal females) 10 years of age and older with HeFH [*see Clinical Studies (14)*]. In this limited controlled trial, there was no significant effect on growth or sexual maturation in the adolescent males or females, or on menstrual cycle length in females.

The safety and effectiveness of ezetimibe in combination with a statin, and other LDL-C lowering therapies, to reduce LDL-C have been established in pediatric patients 10 years of age and older with HoFH. Use of ezetimibe for this indication is based on a 12-week double-blind, placebo-controlled clinical trial followed by an uncontrolled extension period in 7 pediatric patients 11 years of age and older with HoFH [*see Clinical Studies (14)*].

The safety and effectiveness of ezetimibe as an adjunct to diet for the reduction of elevated sitosterol and campesterol levels have been established in adults and pediatric patients 9 years of age and older with homozygous familial sitosterolemia. Use of ezetimibe for this indication is based on an 8-week double-blind, placebo-controlled

clinical trial in 4 patients 9 years of age and older with homozygous sitosterolemia with elevated plasma sitosterol levels (>5 mg/dL) [see *Clinical Studies (14)*].

The safety and effectiveness of ezetimibe have not been established in pediatric patients younger than 10 years of age with HeFH or HoFH, in pediatric patients younger than 9 years of age with homozygous familial sitosterolemia, or in pediatric patients with other types of hyperlipidemia.

8.5 Geriatric Use

Of the 2,396 patients who received ezetimibe in clinical trials, 669 (28%) were 65 years of age and older, and 111 (5%) were 75 years of age and older. Of the 11,308 patients who received ezetimibe in combination with a statin in clinical trials, 3587 (32%) were 65 years of age and older, and 924 (8%) were 75 years of age and older [see *Clinical Studies (14)*]. No overall differences in safety or effectiveness of ezetimibe have been observed between patients 65 years of age and older and younger patients. No clinically meaningful differences in the pharmacokinetics of ezetimibe were observed in geriatric patients compared to younger adult patients [see *Clinical Pharmacology (12.3)*].

8.6 Renal Impairment

No dosage adjustment of ezetimibe is necessary in patients with renal impairment.

8.7 Hepatic Impairment

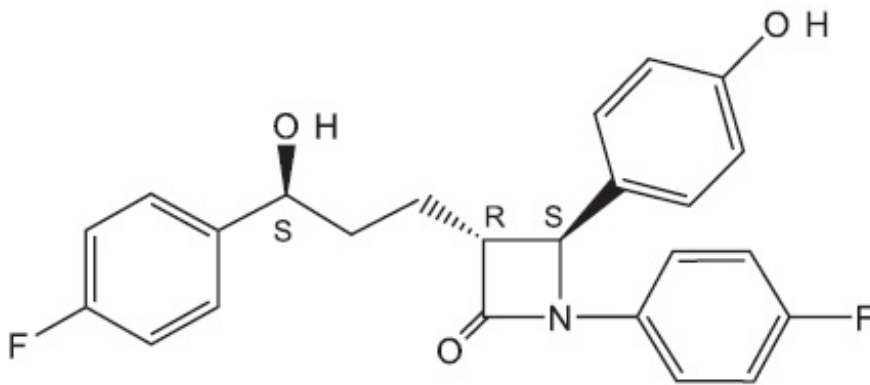
Ezetimibe is not recommended for use in patients with moderate to severe hepatic impairment (Child-Pugh B or C) due to the unknown effects of the increased exposure to ezetimibe [see *Clinical Pharmacology (12.3)*].

10 OVERDOSAGE

In the event of overdose, consider contacting the Poison Help line (1-800-222-1222) or a medical toxicologist for additional overdose management recommendations.

11 DESCRIPTION

Ezetimibe is in a class of lipid-lowering compounds that selectively inhibits the intestinal absorption of cholesterol and related phytosterols. The chemical name of ezetimibe, USP is 1-(4-fluorophenyl)-3(R)-[3-(4-fluorophenyl)-3(S)-hydroxypropyl]-4(S)-(4-hydroxyphenyl)-2-azetidinone. The empirical formula is C₂₄H₂₁F₂NO₃. Its molecular weight is 409.4 and its structural formula is:



Ezetimibe, USP is a white crystalline powder that is freely soluble in ethanol, methanol, and acetone and practically insoluble in water. Ezetimibe, USP has a melting point of about 163°C and is stable at ambient temperature. Ezetimibe Tablets, USP is available as a tablet for oral administration containing 10 mg of ezetimibe, USP and the following inactive ingredients: lactose monohydrate, magnesium stearate, povidone, sodium lauryl sulfate, and sodium starch glycolate.

12 CLINICAL PHARMACOLOGY

12.1 Mechanism of Action

Ezetimibe reduces blood cholesterol by inhibiting the absorption of cholesterol by the small intestine.

The molecular target of ezetimibe has been shown to be the sterol transporter, Niemann-Pick C1-Like 1 (NPC1L1), which is involved in the intestinal uptake of cholesterol and phytosterols. Ezetimibe localizes at the brush border of the small intestine and inhibits the absorption of cholesterol, leading to a decrease in the delivery of intestinal cholesterol to the liver. This causes a reduction of hepatic cholesterol stores and an increase in LDL receptors, resulting in clearance of cholesterol from the blood.

12.2 Pharmacodynamics

Ezetimibe reduces total cholesterol (total-C), LDL-C, apolipoprotein (Apo) B, and non-high-density lipoprotein cholesterol (non-HDL-C) in patients with hyperlipidemia.

In a 2-week clinical trial in 18 hypercholesterolemic patients, ezetimibe inhibited intestinal cholesterol absorption by 54%, compared with placebo. Ezetimibe had no clinically meaningful effect on the plasma concentrations of the fat-soluble vitamins A, D, and E (in a trial of 113 patients) and did not impair adrenocortical steroid hormone production (in a trial of 118 patients).

12.3 Pharmacokinetics

Absorption

After oral administration, ezetimibe is absorbed and extensively conjugated to a pharmacologically active phenolic glucuronide (ezetimibe-glucuronide). After a single 10-mg dose of ezetimibe to fasted adults, mean ezetimibe peak plasma concentrations (C_{max}) of 3.4 to 5.5 ng/mL were attained within 4 to 12 hours (T_{max}). Ezetimibe-

glucuronide mean C_{max} values of 45 to 71 ng/mL were achieved between 1 and 2 hours (T_{max}). There was no substantial deviation from dose proportionality between 5 and 20 mg. The absolute bioavailability of ezetimibe cannot be determined, as the compound is virtually insoluble in aqueous media suitable for injection.

Effect of Food

Concomitant food administration (high-fat or non-fat meals) had no effect on the extent of absorption of ezetimibe when administered as ezetimibe 10-mg tablets. The C_{max} value of ezetimibe was increased by 38% with consumption of high-fat meals.

Distribution

Ezetimibe and ezetimibe-glucuronide are highly bound (>90%) to human plasma proteins.

Excretion

Metabolism

Ezetimibe is primarily metabolized in the small intestine and liver via glucuronide conjugation (a phase II reaction) with subsequent biliary and renal excretion. Minimal oxidative metabolism (a phase I reaction) has been observed in all species evaluated. In humans, ezetimibe is rapidly metabolized to ezetimibe-glucuronide. Ezetimibe and ezetimibe-glucuronide are the major drug-derived compounds detected in plasma, constituting approximately 10 to 20% and 80 to 90% of the total drug in plasma, respectively.

Both ezetimibe and ezetimibe-glucuronide are eliminated from plasma with a half-life of approximately 22 hours for both ezetimibe and ezetimibe-glucuronide. Plasma concentration-time profiles exhibit multiple peaks, suggesting enterohepatic recycling.

Excretion

Following oral administration of ^{14}C -ezetimibe (20 mg) to human subjects, total ezetimibe (ezetimibe + ezetimibe-glucuronide) accounted for approximately 93% of the total radioactivity in plasma. After 48 hours, there were no detectable levels of radioactivity in the plasma.

Approximately 78% and 11% of the administered radioactivity were recovered in the feces and urine, respectively, over a 10-day collection period. Ezetimibe was the major component in feces and accounted for 69% of the administered dose, while ezetimibe-glucuronide was the major component in urine and accounted for 9% of the administered dose.

Specific Populations

Geriatric Patients

In a multiple-dose trial with ezetimibe given 10 mg once daily for 10 days, plasma concentrations for total ezetimibe were about 2-fold higher in older (≥ 65 years) healthy subjects compared to younger subjects. However, the difference in plasma concentrations is not clinically meaningful.

Gender

In a multiple-dose trial with ezetimibe given 10 mg once daily for 10 days, plasma concentrations for total ezetimibe were slightly higher (<20%) in females than in males.

Race

Based on a meta-analysis of multiple-dose pharmacokinetic studies, there were no pharmacokinetic differences between Black and White subjects. Studies in Asian subjects indicated that the pharmacokinetics of ezetimibe were similar to those seen in White subjects.

Renal Impairment

After a single 10-mg dose of ezetimibe in patients with severe renal disease (n=8; mean CrCl \leq 30 mL/min/1.73 m²), the mean AUC values for total ezetimibe, ezetimibe-glucuronide, and ezetimibe were increased approximately 1.5-fold, compared to healthy subjects (n=9).

Hepatic Impairment:

After a single 10-mg dose of ezetimibe, the mean AUC for total ezetimibe was increased approximately 1.7-fold in patients with mild hepatic impairment (Child-Pugh score 5 to 6), compared to healthy subjects. The mean AUC values for total ezetimibe and ezetimibe were increased approximately 3- to 4-fold and 5- to 6-fold, respectively, in patients with moderate (Child-Pugh score 7 to 9) or severe hepatic impairment (Child-Pugh score 10 to 15). In a 14-day, multiple-dose trial (10 mg daily) in patients with moderate hepatic impairment, the mean AUC values for total ezetimibe and ezetimibe were increased approximately 4-fold on Day 1 and Day 14 compared to healthy subjects [see Use in Specific Populations (8.7)].

Drug Interactions

Ezetimibe had no significant effect on a series of probe drugs (caffeine, dextromethorphan, tolbutamide, and IV midazolam) known to be metabolized by cytochrome P450 (1A2, 2D6, 2C8/9 and 3A4) in a "cocktail" study of twelve healthy adult males. This indicates that ezetimibe is neither an inhibitor nor an inducer of these cytochrome P450 isozymes, and it is unlikely that ezetimibe will affect the metabolism of drugs that are metabolized by these enzymes.

TABLE 4: Effect of Coadministered Drugs on Total Ezetimibe

Coadministered Drug and Dosing Regimen	Total Ezetimibe	
	Change in AUC	Change in C_{max}
Cyclosporine-stable dose required (75-150 mg BID) †,‡	↑240%	↑290%
Fenofibrate, 200 mg QD, 14 days‡	↑48%	↑64%
Gemfibrozil, 600 mg BID, 7 days‡	↑64%	↑91%
Cholestyramine, 4 g BID, 14 days‡	↓55%	↓4%
Aluminum & magnesium hydroxide combination antacid, single dose§	↓4%	↓30%
Cimetidine, 400 mg BID, 7 days	↑6%	↑22%
Glipizide, 10 mg, single dose	↑4%	↓8%
Statins		
Lovastatin 20 mg QD, 7 days	↑9%	↑3%
Pravastatin 20 mg QD, 14 days	↑7%	↑23%

Atorvastatin 10 mg QD, 14 days	↓2%	↑12%
Rosuvastatin 10 mg QD, 14 days	↑13%	↑18%
Fluvastatin 20 mg QD, 14 days	↓19%	↑7%

TABLE 5: Effect of Ezetimibe Coadministration on Systemic Exposure to Other Drugs

Coadministered and its Regimen	Drug Dosage	Ezetimibe Dosage Regimen	Change in AUC of Coadministered Drug	Change in C_{max} of Coadministered Drug
Warfarin, 25-mg dose on Day 7	single	10 mg QD, 11 days	↓2% (R-warfarin) ↓4% (S-warfarin)	↑3% (R-warfarin) ↑1% (S-warfarin)
Digoxin, 0.5 mg dose	single	10 mg QD, 8 days	↑2%	↓7%
Gemfibrozil, 600 mg 7 days*	BID,	10 mg QD, 7 days	↓1%	↓11%
Ethinyl estradiol & Levonorgestrel, 21 days	QD,	10 mg QD, days 8-14 of 21d contraceptive cycle	Ethinyl estradiol 0% Levonorgestrel 0%	Ethinyl estradiol ↓9% Levonorgestrel ↓5%
Glipizide, 10 mg on days 1 and 9		10 mg QD, days 2-9	↓3%	↓5%
Fenofibrate, 200 mg 14 days [§]	QD,	10 mg QD, 14 days	↑11%	↑7%
Cyclosporine, 100 mg single dose day 7*	mg	20 mg QD, 8 days	↑15%	↑10%
Statins				
Lovastatin 20 mg QD, 7 days		10 mg QD, 7 days	↑19%	↑3%
Pravastatin 20 mg QD, 14 days		10 mg QD, 14 days	↓20%	↓24%
Atorvastatin 10 mg QD, 14 days		10 mg QD, 14 days	↓4%	↑7%
Rosuvastatin 10 mg QD, 14 days		10 mg QD, 14 days	↑19%	↑17%
Fluvastatin 20 mg QD, 14 days		10 mg QD, 14 days	↓39%	↓27%

13 NONCLINICAL TOXICOLOGY

13.1 Carcinogenesis, Mutagenesis, Impairment of Fertility

A 104-week dietary carcinogenicity study with ezetimibe was conducted in rats at doses up to 1500 mg/kg/day (males) and 500 mg/kg/day (females) (~20 × the human exposure at 10 mg daily based on AUC_{0-24hr} for total ezetimibe). A 104-week dietary carcinogenicity study with ezetimibe was also conducted in mice at doses up to 500 mg/kg/day (>150 × the human exposure at 10 mg daily based on AUC_{0-24hr} for total ezetimibe). There were no statistically significant increases in tumor incidences in drug-treated rats or mice.

No evidence of mutagenicity was observed *in vitro* in a microbial mutagenicity (Ames) test with *Salmonella typhimurium* and *Escherichia coli* with or without metabolic activation. No evidence of clastogenicity was observed *in vitro* in a chromosomal aberration assay in human peripheral blood lymphocytes with or without metabolic activation. In addition, there was no evidence of genotoxicity in the *in vivo* mouse micronucleus test.

In oral (gavage) fertility studies of ezetimibe conducted in rats, there was no evidence of reproductive toxicity at doses up to 1000 mg/kg/day in male or female rats (~7 × the human exposure at 10 mg daily based on AUC_{0-24hr} for total ezetimibe).

14 CLINICAL STUDIES

Primary Hyperlipidemia in Adults

Ezetimibe reduces total-C, LDL-C, Apo B, and non-HDL-C in patients with hyperlipidemia. Maximal to near maximal response is generally achieved within 2 weeks and maintained during chronic therapy.

Monotherapy

In two multicenter, double-blind, placebo-controlled, 12-week studies in 1719 patients (age range 18 to 86 years, 52% females; 91% White, 5% Black or African American, 1% Asian, 3% other races mostly identified as Hispanic or Latino ethnicity) with primary hyperlipidemia, ezetimibe significantly lowered total-C, LDL-C, Apo B, and non-HDL-C compared to placebo (see **Table 7**). Reduction in LDL-C was consistent across age, sex, and baseline LDL-C.

TABLE 7: Response to Ezetimibe in Patients with Primary Hyperlipidemia (Mean* % Change from Untreated Baseline[†])

	Treatment Group	N	Total-C	LDL-C	Apo B	Non-HDL-C
Trial 1[‡]	Placebo	205	+1	+1	-1	+1
	Ezetimibe	622	-12	-18	-15	-16
Trial 2[‡]	Placebo	226	+1	+1	-1	+2
	Ezetimibe	666	-12	-18	-16	-16
Pooled Data[‡](Studies 1 & 2)	Placebo	431	0	+1	-2	+1
	Ezetimibe	1288	-13	-18	-16	-16

Combination with Statins: Ezetimibe Added to On-going Statin Therapy

In a multicenter, double-blind, placebo-controlled, 8-week study, 769 patients (age range 22 to 85 years, 42% females; 90% White, 6% Black or African American, 1% Asian, 3% other races; and 2% identified as Hispanic or Latino ethnicity) with primary hyperlipidemia, known coronary heart disease or multiple cardiovascular risk factors who were already receiving statin monotherapy, but who had not met their NCEP ATP II target LDL-C goal were randomized to receive either ezetimibe or placebo in addition to their on-going statin.

Ezetimibe, added to on-going statin therapy, significantly lowered total-C, LDL-C, Apo B, non-HDL-C compared with a statin administered alone (see **Table 8**). LDL-C reductions induced by ezetimibe were generally consistent across all statins.

TABLE 8: Response to Addition of Ezetimibe to On-Going Statin Therapy* in Patients with Hyperlipidemia (Mean[†] % Change from Treated Baseline[‡])

Treatment (Daily Dose)	N	Total-C	LDL-C	Apo B	Non-HDL-C
On-going Statin + Placebo [§]	390	-2	-4	-3	-3
On-going Statin + Ezetimibe [§]	379	-17	-25	-19	-23

Combination with Statins: Ezetimibe Initiated Concurrently with a Statin

In four multicenter, double-blind, placebo-controlled, 12-week trials, in 2,382 patients (age range 18 to 87 years, 57% female; 88% White, 5% Black or African American, 2% Asian, 5% other races mostly identified as Hispanic or Latino) with hyperlipidemia, ezetimibe or placebo was administered alone or with various doses of atorvastatin, simvastatin, pravastatin, or lovastatin.

When all patients receiving ezetimibe with a statin were compared to all those receiving the corresponding statin alone, ezetimibe significantly lowered total-C, LDL-C, Apo B, non-HDL-C compared to the statin administered alone. LDL-C reductions induced by ezetimibe were generally consistent across all statins. (See footnote [‡], **Tables 9 to 12.**)

TABLE 8: Response to Ezetimibe and Atorvastatin Initiated Concurrently in Patients with Primary Hyperlipidemia (Mean* % Change from Untreated Baseline[†])

Treatment (Daily Dose)	N	Total-C	LDL-C	Apo B	Non-HDL-C
Placebo	60	+4	+4	+3	+4
Ezetimibe	65	-14	-20	-15	-18
Atorvastatin 10 mg	60	-26	-37	-28	-34
Ezetimibe + Atorvastatin 10 mg	65	-38	-53	-43	-49
Atorvastatin 20 mg	60	-30	-42	-34	-39

Ezetimibe + Atorvastatin 20 mg	62	-39	-54	-44	-50
Atorvastatin 40 mg	66	-32	-45	-37	-41
Ezetimibe + Atorvastatin 40 mg	65	-42	-56	-45	-52
Atorvastatin 80 mg	62	-40	-54	-46	-51
Ezetimibe + Atorvastatin 80 mg	63	-46	-61	-50	-58
Pooled data (All Atorvastatin Doses) [‡]	248	-32	-44	-36	-41
Pooled data (All Ezetimibe + Atorvastatin Doses) [‡]	255	-41	-56	-45	-52

TABLE 10: Response to Ezetimibe and Simvastatin Initiated Concurrently in Patients with Primary Hyperlipidemia (Mean* % Change from Untreated Baseline[†])

Treatment (Daily Dose)	N	Total-C	LDL-C	Apo B	Non-HDL-C
Placebo	70	-1	-1	0	-1
Ezetimibe	61	-13	-19	-14	-17
Simvastatin 10 mg	70	-18	-27	-21	-25
Ezetimibe + Simvastatin 10 mg	67	-32	-46	-35	-42
Simvastatin 20 mg	61	-26	-36	-29	-33
Ezetimibe + Simvastatin 20 mg	69	-33	-46	-36	-42
Simvastatin 40 mg	65	-27	-38	-32	-35
Ezetimibe + Simvastatin 40 mg	73	-40	-56	-45	-51
Simvastatin 80 mg	67	-32	-45	-37	-41
Ezetimibe + Simvastatin 80 mg	65	-41	-58	-47	-53
Pooled data (All Simvastatin Doses) [‡]	263	-26	-36	-30	-34
Pooled data (All Ezetimibe + Simvastatin Doses) [‡]	274	-37	-51	-41	-47

TABLE 11: Response to Ezetimibe and Pravastatin Initiated Concurrently in Patients with Primary Hyperlipidemia (Mean* % Change from Untreated Baseline[†])

Treatment (Daily Dose)	N	Total-C	LDL-C	Apo B	Non-HDL-C
Placebo	65	0	-1	-2	0
Ezetimibe	64	-13	-20	-15	-17
Pravastatin 10 mg	66	-15	-21	-16	-20

Ezetimibe + Pravastatin 10 mg	71	-24	-34	-27	-32
Pravastatin 20 mg	69	-15	-23	-18	-20
Ezetimibe + Pravastatin 20 mg	66	-27	-40	-31	-36
Pravastatin 40 mg	70	-22	-31	-26	-28
Ezetimibe + Pravastatin 40 mg	67	-30	-42	-32	-39
Pooled data (All Pravastatin Doses) [‡]	205	-17	-25	-20	-23
Pooled data (All Ezetimibe + Pravastatin Doses) [‡]	204	-27	-39	-30	-36

TABLE 12: Response to Ezetimibe and Lovastatin Initiated Concurrently in Patients with Primary Hyperlipidemia (Mean* % Change from Untreated Baseline[†])

Treatment (Daily Dose)	N	Total-C	LDL-C	Apo B	Non-HDL-C
Placebo	64	+1	0	+1	+1
Ezetimibe	72	-13	-19	-14	-16
Lovastatin 10 mg	73	-15	-20	-17	-19
Ezetimibe + Lovastatin 10 mg	65	-24	-34	-27	-31
Lovastatin 20 mg	74	-19	-26	-21	-24
Ezetimibe + Lovastatin 20 mg	62	-29	-41	-34	-39
Lovastatin 40 mg	73	-21	-30	-25	-27
Ezetimibe + Lovastatin 40 mg	65	-33	-46	-38	-43
Pooled data (All Lovastatin Doses) [‡]	220	-18	-25	-21	-23
Pooled data (All Ezetimibe + Lovastatin Doses) [‡]	192	-29	-40	-33	-38

Combination with Fenofibrate

In a multicenter, double-blind, placebo-controlled, clinical study in patients with mixed hyperlipidemia, 625 patients (age range 20 to 76 years, 44% female; 79% White, 1% Black or African American, 20% other races; and 11% identified as Hispanic or Latino ethnicity) were treated for up to 12 weeks and 576 for up to an additional 48 weeks. Patients were randomized to receive placebo, ezetimibe alone, 160 mg fenofibrate alone, or ezetimibe and 160 mg fenofibrate in the 12-week study. After completing the 12-week trial, eligible patients were assigned to ezetimibe coadministered with fenofibrate or fenofibrate monotherapy for an additional 48 weeks.

Ezetimibe coadministered with fenofibrate significantly lowered total-C, LDL-C, Apo B, and non-HDL-C compared to fenofibrate administered alone (see **Table 13**).

TABLE 13: Response to Ezetimibe and Fenofibrate Initiated Concurrently in Patients with Mixed Hyperlipidemia (Mean* % Change from Untreated Baseline† at 12 weeks)

Treatment (Daily Dose)	N	Total-C	LDL-C	Apo B	Non-HDL-C
Placebo	63	0	0	-1	0
Ezetimibe	185	-12	-13	-11	-15
Fenofibrate 160 mg	188	-11	-6	-15	-16
Ezetimibe + Fenofibrate 160 mg	183	-22	-20	-26	-30

The changes in lipid endpoints after an additional 48 weeks of treatment with ezetimibe coadministered with fenofibrate or with fenofibrate alone were consistent with the 12-week data displayed above.

HeFH in Pediatric Patients

The effects of ezetimibe coadministered with simvastatin (n=126) compared to simvastatin monotherapy (n=122) have been evaluated in males and females with HeFH. In a multicenter, double-blind, controlled trial followed by an open-label phase, 142 males and 106 postmenarchal females, 10 to 17 years of age (mean age 14.2 years, 43% females, 82% White, 4% Asian, 2% Black or African American, 13% multiracial; 14% identified as Hispanic or Latino ethnicity) with HeFH were randomized to receive either ezetimibe coadministered with simvastatin or simvastatin monotherapy. Inclusion in the trial required 1) a baseline LDL-C level between 160 and 400 mg/dL and 2) a medical history and clinical presentation consistent with HeFH. The mean baseline LDL-C value was 225 mg/dL (range: 161 to 351 mg/dL) in the ezetimibe coadministered with simvastatin group compared to 219 mg/dL (range: 149 to 336 mg/dL) in the simvastatin monotherapy group. The patients received coadministered ezetimibe and simvastatin (10 mg, 20 mg, or 40 mg) or simvastatin monotherapy (10 mg, 20 mg, or 40 mg) for 6 weeks, coadministered ezetimibe and 40mg simvastatin or 40-mg simvastatin monotherapy for the next 27 weeks, and open-label coadministered ezetimibe and simvastatin (10 mg, 20 mg, or 40 mg) for 20 weeks thereafter.

The results of the trial at Week 6 are summarized in **Table 14**. Results at Week 33 were consistent with those at Week 6.

TABLE 14: Mean Percent Difference at Week 6 Between the Pooled Ezetimibe Coadministered with Simvastatin Group and the Pooled Simvastatin Monotherapy Group in Adolescent Patients with HeFH

	Total-C	LDL-C	Apo B	Non-HDL-C
Mean percent difference between treatment groups	-12%	-15%	-12%	-14%
95% Confidence Interval	(-15%, -9%)	(-18%, -12%)	(-15%, -9%)	(-17%, -11%)

HoFH in Adults and Pediatric Patients

A trial was conducted to assess the efficacy of ezetimibe in the treatment of HoFH. This

double-blind, randomized, 12-week study enrolled 50 patients (age range 11 to 74 years, 58% female; 90% White, 2% Black or African American, 8% other races identified as Hispanic or Latino) with a clinical and/or genotypic diagnosis of HoFH, with or without concomitant LDL apheresis, already receiving atorvastatin or simvastatin (40 mg). Patients were randomized to one of three treatment groups, atorvastatin or simvastatin (80 mg), ezetimibe administered with atorvastatin or simvastatin (40 mg), or ezetimibe administered with atorvastatin or simvastatin (80 mg). Due to decreased bioavailability of ezetimibe in patients concomitantly receiving cholestyramine [see *Drug Interactions (7)*], ezetimibe was dosed at least 4 hours before or after administration of resins. Mean baseline LDL-C was 341 mg/dL in those patients randomized to atorvastatin 80 mg or simvastatin 80 mg alone and 316 mg/dL in the group randomized to ezetimibe plus atorvastatin 40 or 80 mg or simvastatin 40 or 80 mg. ezetimibe, administered with atorvastatin or simvastatin (40 and 80 mg statin groups, pooled), significantly reduced LDL-C (21%) compared with increasing the dose of simvastatin or atorvastatin monotherapy from 40 to 80 mg (7%). In those treated with ezetimibe plus 80 mg atorvastatin or with ezetimibe plus 80 mg simvastatin, LDL-C was reduced by 27%.

Homozygous Sitosterolemia (Phytosterolemia) in Adults and Pediatric Patients

A trial was conducted to assess the efficacy of ezetimibe in the treatment of homozygous sitosterolemia. In this multicenter, double-blind, placebo-controlled, 8-week trial, 37 patients (age range 9 to 72 years, 65% females; 89% White, 3% Asian, 8% other races identified as Hispanic or Latino) with homozygous sitosterolemia with elevated plasma sitosterol levels (>5 mg/dL) on their current therapeutic regimen (diet, bile-acid-binding resins, statins, ileal bypass surgery and/or LDL apheresis), were randomized to receive ezetimibe (n=30) or placebo (n=7). Due to decreased bioavailability of ezetimibe in patients concomitantly receiving cholestyramine [see *Drug Interactions (7)*], ezetimibe was dosed at least 2 hours before or 4 hours after resins were administered. Excluding the one subject receiving LDL apheresis, ezetimibe significantly lowered plasma sitosterol and campesterol, by 21% and 24% from baseline, respectively. In contrast, patients who received placebo had increases in sitosterol and campesterol of 4% and 3% from baseline, respectively. For patients treated with ezetimibe, mean plasma levels of plant sterols were reduced progressively over the course of the trial. Reductions in sitosterol and campesterol were consistent between patients taking ezetimibe concomitantly with bile acid sequestrants (n=8) and patients not on concomitant bile acid sequestrant therapy (n=21).

16 HOW SUPPLIED/STORAGE AND HANDLING

Ezetimibe Tablets, USP 10 mg, are white to off-white, capsule-shaped, flat, beveled edged tablets engraved with 'G80' on one side and plain on the other side. They are supplied as follows:

Bottles of 30, NDC 68462-226-30

Bottles of 90, NDC 68462-226-90

Bottles of 500, NDC 68462-226-05

Bottles of 1000, NDC 68462-226-10

Unit-dose packages of 100, NDC 68462-226-11

Store Ezetimibe Tablets, USP at 20°C to 25°C (68°F to 77°F); excursions permitted to 15°C to 30°C (59°F to 86°F) [see USP Controlled Room Temperature]. Protect from moisture.

17 PATIENT COUNSELING INFORMATION

Advise the patient to read the FDA-Approved Patient Labeling (Patient Information).

Inform patients that ezetimibe may cause liver enzyme elevations [see *Warnings and Precautions (5.2)*].

Muscle Pain

Advise patients that ezetimibe may cause myopathy and rhabdomyolysis. Inform patients that the risk is also increased when taking certain types of medication and they should discuss all medication, both prescription and over the counter, with their healthcare provider. Instruct patients to promptly report any unexplained muscle pain, tenderness or weakness particularly if accompanied by malaise or fever [see *Warnings and Precautions (5.3)*, and *Drug Interactions (7)*].

Pregnancy

Advise patients to inform their healthcare provider of a known or suspected pregnancy to discuss if ezetimibe should be discontinued [see *Use in Specific Populations (8.1)*].

Breastfeeding

Advise patients who have a lipid disorder and are breastfeeding to discuss the options with their healthcare provider [see *Use in Specific Populations (8.2)*].

Missed Dose

Instruct patients to take ezetimibe only as prescribed. If a dose is missed, it should be taken as soon as possible. Advise patients not to double their next dose.

Manufactured by:

Glenmark Pharmaceuticals Limited

India

Manufactured for:



Glenmark Pharmaceuticals Inc., USA

Mahwah, NJ 07430

Questions? 1 (888) 721-7115

www.glenmarkpharma-us.com

September 2023

Ezetimibe Tablets, USP (e zet' i mibe)

Patient Information about Ezetimibe Tablets, USP

Read this information carefully before you start taking ezetimibe tablets and each time you get more ezetimibe tablets. There may be new information. This information does not take the place of talking with your doctor about your medical condition or your treatment. If you have any questions about ezetimibe tablets, ask your doctor. Only your doctor can determine if ezetimibe tablets is right for you.

What are ezetimibe tablets?

Ezetimibe tablet is a medicine used with a cholesterol lowering diet:

- and with other cholesterol medicines called a statin, or alone (when additional cholesterol lowering treatments are not possible), to lower elevated low-density lipoprotein cholesterol (LDL-C) or bad cholesterol in adults with primary hyperlipidemia (too many fats in your blood), including heterozygous familial hypercholesterolemia (HeFH). HeFH is an inherited condition that causes high levels of bad cholesterol.
- and with a statin to lower LDL-C in adults and children 10 years of age and older with HeFH.
- and with a medicine called fenofibrate to lower elevated LDL-C in adults with mixed hyperlipidemia.
- to lower elevated sitosterol and campesterol levels in adults and in children 9 years of age and older with homozygous familial sitosterolemia (a rare inherited condition that prevents the body from getting rid of cholesterol from plants).

Ezetimibe tablet is also used:

- with a statin and other cholesterol lowering treatments to lower elevated LDL-C levels in adults and patients 10 years of age and older with homozygous familial hypercholesterolemia (HoFH). HoFH is an inherited condition that causes high levels of bad cholesterol.

The safety and effectiveness of ezetimibe tablets has not been established in children:

- younger than 10 years of age with HeFH or HoFH.
- younger than 9 years of age with homozygous familial sitosterolemia.
- with other types of hyperlipemia.

Do not take ezetimibe tablets:

- if you are allergic to ezetimibe or any of the ingredients in ezetimibe tablets. See the end of this Patient Information leaflet for a complete list of ingredients in ezetimibe tablets. Stop using ezetimibe tablets and get medical help right away if you have symptoms of a serious allergic reaction including:
 - o swelling of the face, tongue, or throat
 - o difficulty breathing or swallowing

- o fainting or feeling dizzy
- o very fast heartbeat
- o severe skin rash, hives, and itching
- o flu-like symptoms including fever, sore throat, cough, tiredness, and joint pain
- with certain statins, fenofibrate, or other LDL-C lowering medicines if your healthcare provider has told you not to take them.

Before you take ezetimibe tablets, tell your healthcare provider about all your medical conditions, including if you:

- have liver problems. Ezetimibe tablets may not be right for you.
- are pregnant or plan to become pregnant. It is not known if ezetimibe tablets will harm your unborn baby. You and your healthcare provider should decide if you will take ezetimibe tablets while you are pregnant.
- are breastfeeding. It is not known if ezetimibe tablets passes into your breast milk. You and your healthcare provider should decide the best way to feed your baby if you take ezetimibe tablets.

Tell your healthcare provider about all the medicines you take, including prescription and over-the-counter medicines, vitamins, and herbal supplements. Talk to your healthcare provider before you start taking any new medicines.

Taking ezetimibe tablets with certain other medicines may affect each other causing side effects. Ezetimibe tablets may affect the way other medicines work, and other medicines may affect how ezetimibe tablets works.

Especially tell your healthcare provider if you take:

- cyclosporine (a medicine for your immune system)
- fibrates (medicine for lowering cholesterol)
- bile acid sequestrants (medicine for lowering LDL-C)

Ask your healthcare provider or pharmacist for a list of medicines if you are not sure. Know the medicines you take. Keep a list of them to show your healthcare provider and pharmacist when you get a new medicine.

How should I take ezetimibe tablets?

- Take ezetimibe tablets 1-time each day, with or without food. It may be easier to remember to take your dose if you do it at the same time every day, such as with breakfast, dinner, or at bedtime. If you also take another medicine to reduce your cholesterol, ask your healthcare provider if you can take them at the same time.
- If you miss a dose, take it as soon as you remember. If you do not remember until it is time for your next dose, skip the missed dose and go back to your regular schedule. Do not take 2 doses of ezetimibe tablets at the same time.
- While taking ezetimibe tablets, continue to follow your cholesterol-lowering diet and to exercise as your healthcare provider told you to.
- If you take a medicine called a bile acid sequestrant, take ezetimibe tablets at least 2 hours before or 4 hours after you take the bile acid sequestrant.
- Your healthcare provider may do blood tests to check your LDL-C levels as early as 4 weeks after starting treatment with ezetimibe tablets.
- In case of an overdose, get medical help or contact a live Poison Center expert

right away at 1800-222-1222. Advice is also available online at poisonhelp.org.

What are the possible side effects of ezetimibe tablets?

Ezetimibe tablets may cause serious side effects including:

- **increased liver enzymes.** An increase in liver enzymes can happen in people taking ezetimibe tablets alone or with statins. Your healthcare provider may do blood tests to check your liver before and during treatment. Your healthcare provider may need to change or stop your treatment with ezetimibe tablets because of an increase in liver enzymes.
- **muscle pain, tenderness, and weakness (myopathy).** Muscle problems, including muscle breakdown (rhabdomyolysis) can happen. Tell your healthcare provider right away if:
 - o you have unexplained muscle pain, tenderness, weakness, feel more tired than usual, or fever.
 - o you have muscle problems that do not go away even after your healthcare provider has advised you to stop taking ezetimibe tablets. Your healthcare provider may do further tests to diagnose the cause of your muscle problems.

Your chances of getting muscle problems are higher if you are also taking statins or fibrates.

The most common side effects of ezetimibe tablets taken alone include:

- upper respiratory tract infection
- diarrhea
- joint pain
- inflammation of the sinuses
- pain in arms or legs
- feeling tired
- flu-like symptoms

The most common side effects of ezetimibe tablets taken with a statin include:

- runny nose, sore throat
- muscle aches and pains
- upper respiratory tract infection
- joint pain
- diarrhea
- back pain
- flu-like symptoms
- pain in arms or legs
- feeling tired

Tell your healthcare provider if you have any side effect that bothers you or does not go away. These are not all the possible side effects of ezetimibe tablets.

Call your doctor for medical advice about side effects. You may report side effects to FDA at 1-800FDA-1088.

How should I store ezetimibe tablets?

- Store ezetimibe tablets at room temperature between 68°F to 77°F (20°C to 25°C).
- Protect from moisture.

Keep ezetimibe tablets and all medicines out of the reach of children.

General information about safe and effective use of ezetimibe tablets.

Medicines are sometimes prescribed for purpose other than those listed in Patient Information leaflet. Do not use ezetimibe tablets for a condition for which it was not prescribed. Do not give ezetimibe tablets to other people, even if they have the same condition you have. It may harm them.

You can ask your healthcare provider for information about ezetimibe tablets that is written for health professionals.

What are the ingredients in ezetimibe tablets?

Active ingredient: ezetimibe.

Inactive ingredients:

Lactose monohydrate, magnesium stearate, povidone, sodium lauryl sulfate, and sodium starch glycolate.

Manufactured by:

Glenmark Pharmaceuticals Limited

India

Manufactured for:



Glenmark Pharmaceuticals Inc., USA

Mahwah, NJ 07430

Questions? 1 (888) 721-7115

www.glenmarkpharma-us.com

September 2023

This Patient Information has been approved by the U.S. Food and Drug Administration.

PACKAGE/LABEL PRINCIPAL DISPLAY PANEL

NDC 68462-226-30
**Ezetimibe
 Tablets, USP**

10 mg



Rx only

30 Tablets

Each tablet contains 10 mg ezetimibe, USP.
Usual Dosage: One tablet daily.
 See Package Insert.

Store at 20°C to 25°C (68°F to 77°F);
 excursions permitted to 15°C to 30°C
 (59°F to 86°F) [see USP Controlled Room
 Temperature]. Protect from moisture.

Manufactured by:
Glenmark Pharmaceuticals Limited
 Pithampur, Madhya Pradesh 454775, India
 MP/Drugs/25/9/2010

Manufactured for:
Glenmark Pharmaceuticals Inc., USA
 Mahwah, NJ 07430
 01/22



3 68462 22630 18

Questions? 1 (888) 721-7115
 www.glenmarkpharma-us.com

PE610440122-1

EZETIMIBE

ezetimibe tablet

Product Information

Product Type	HUMAN PRESCRIPTION DRUG	Item Code (Source)	NDC:68462-226
Route of Administration	ORAL		

Active Ingredient/Active Moiety

Ingredient Name	Basis of Strength	Strength
EZETIMIBE (UNII: EOR26LQQ24) (EZETIMIBE - UNII:EOR26LQQ24)	EZETIMIBE	10 mg

Inactive Ingredients

Ingredient Name	Strength
LACTOSE MONOHYDRATE (UNII: EWQ57Q8I5X)	
MAGNESIUM STEARATE (UNII: 70097M6I30)	
POVIDONE, UNSPECIFIED (UNII: FZ989GH94E)	
SODIUM LAURYL SULFATE (UNII: 368GB5141J)	
SODIUM STARCH GLYCOLATE TYPE A POTATO (UNII: 5856J3G2A2)	

Product Characteristics

Color	WHITE	Score	no score
Shape	CAPSULE	Size	8mm
Flavor		Imprint Code	G80
Contains			

Packaging

#	Item Code	Package Description	Marketing Start Date	Marketing End Date
1	NDC:68462-226-30	30 in 1 BOTTLE; Type 0: Not a Combination Product	04/29/2022	
2	NDC:68462-226-90	90 in 1 BOTTLE; Type 0: Not a Combination Product	04/29/2022	

3	NDC:68462-226-05	500 in 1 BOTTLE; Type 0: Not a Combination Product	04/29/2022	
4	NDC:68462-226-10	1000 in 1 BOTTLE; Type 0: Not a Combination Product	04/29/2022	
5	NDC:68462-226-11	10 in 1 CARTON	04/29/2022	
5		10 in 1 BLISTER PACK; Type 0: Not a Combination Product		

Marketing Information

Marketing Category	Application Number or Monograph Citation	Marketing Start Date	Marketing End Date
ANDA	ANDA078560	04/29/2022	

Labeler - Glenmark Pharmaceuticals Inc., USA (130597813)

Establishment

Name	Address	ID/FEI	Business Operations
Glenmark Pharmaceuticals Limited		677318665	MANUFACTURE(68462-226) , ANALYSIS(68462-226)

Establishment

Name	Address	ID/FEI	Business Operations
Glenmark Pharmaceuticals Limited		862603186	MANUFACTURE(68462-226) , ANALYSIS(68462-226)

Revised: 9/2023

Glenmark Pharmaceuticals Inc., USA