

CLOMIPRAMINE HYDROCHLORIDE- clomipramine hydrochloride capsule
TruPharma LLC

Clomipramine Hydrochloride Capsules, USP

(25 mg, 50 mg, and 75 mg)

Rx only

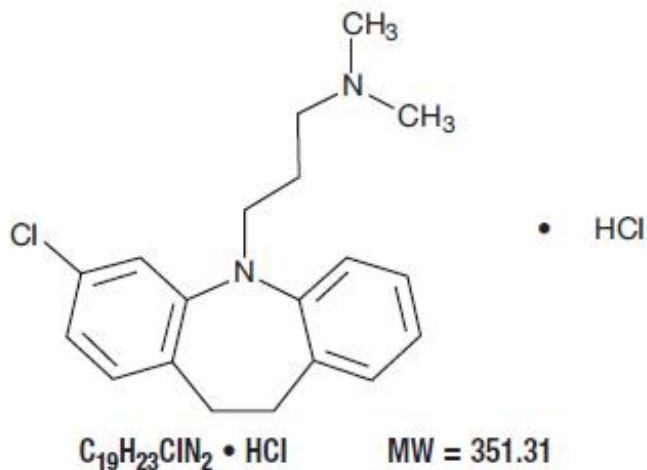
Suicidality and Antidepressant Drugs

Antidepressants increased the risk compared to placebo of suicidal thinking and behavior (suicidality) in children, adolescents, and young adults in short-term studies of major depressive disorder (MDD) and other psychiatric disorders. Anyone considering the use of clomipramine hydrochloride or any other antidepressant in a child, adolescent, or young adult must balance this risk with the clinical need. Short-term studies did not show an increase in the risk of suicidality with antidepressants compared to placebo in adults beyond age 24; there was a reduction in risk with antidepressants compared to placebo in adults aged 65 and older. Depression and certain other psychiatric disorders are themselves associated with increases in the risk of suicide. Patients of all ages who are started on antidepressant therapy should be monitored appropriately and observed closely for clinical worsening, suicidality, or unusual changes in behavior. Families and caregivers should be advised of the need for close observation and communication with the prescriber. Clomipramine hydrochloride is not approved for use in pediatric patients except for patients with obsessive compulsive disorder (OCD) (see WARNINGS, Clinical Worsening and Suicide Risk; PRECAUTIONS, Information for Patients; and PRECAUTIONS, Pediatric Use).

DESCRIPTION

Clomipramine hydrochloride capsules USP is an antiobsessional drug that belongs to the class (dibenzazepine) of pharmacologic agents known as tricyclic antidepressants. Clomipramine hydrochloride capsules are available as capsules of 25, 50, and 75 mg for oral administration.

Clomipramine hydrochloride USP is 3-chloro-5-[3-(dimethylamino)propyl]-10,11-dihydro- 5H-dibenz[*b,f*] azepine monohydrochloride, and its structural formula is:



Clomipramine hydrochloride USP is a white to off-white crystalline powder. It is freely soluble in water, in methanol, and in methylene chloride, and insoluble in ethyl ether and in hexane.

Inactive Ingredients. colloidal silicon dioxide, D&C Yellow No. 10, FD&C Blue No. 1 (25 mg and 50 mg strengths only), FD&C Red No. 3 (25 mg and 50 mg strengths only), FD&C Red No. 40 (50 mg strength only), FD&C Yellow No. 6 (25 mg and 75 mg strength only), gelatin, magnesium stearate, pregelatinized starch, and titanium dioxide.

In addition, the black imprinting ink for the 25 mg, 50 mg and 75 mg capsules contains black iron oxide, propylene glycol, shellac, strong ammonia solution.

CLINICAL PHARMACOLOGY

Pharmacodynamics

Clomipramine (CMI) is presumed to influence obsessive and compulsive behaviors through its effects on serotonergic neuronal transmission. The actual neurochemical mechanism is unknown, but CMI's capacity to inhibit the reuptake of serotonin (5-HT) is thought to be important.

Pharmacokinetics

Absorption/Bioavailability – CMI from clomipramine hydrochloride capsules is as bioavailable as CMI from a solution. The bioavailability of CMI from capsules is not significantly affected by food.

In a dose proportionality study involving multiple CMI doses, steady-state plasma concentrations (C_{ss}) and area-under-plasma-concentration-time curves (AUC) of CMI and CMI's major active metabolite, desmethylclomipramine (DMI), were not proportional to dose over the ranges evaluated, i.e., between 25 to 100 mg/day and between 25 to 150 mg/day, although C_{ss} and AUC are approximately linearly related to dose between 100 to 150 mg/day. The relationship between dose and CMI/DMI concentrations at higher daily doses has not been systematically assessed, but if there is significant dose dependency at doses above 150 mg/day, there is the potential for dramatically higher C_{ss} and AUC even for patients dosed within the recommended range. This may pose a potential risk to some patients (*see* **WARNINGS and PRECAUTIONS, Drug Interactions**).

After a single 50 mg oral dose, maximum plasma concentrations of CMI occur within 2 to 6 hours (mean, 4.7 hr) and range from 56 ng/mL to 154 ng/mL (mean, 92 ng/mL). After multiple daily doses of 150 mg of clomipramine hydrochloride capsules, steady-state maximum plasma concentrations range from 94 ng/mL to 339 ng/mL (mean, 218 ng/mL) for CMI and from 134 ng/mL to 532 ng/mL (mean, 274 ng/mL) for DMI. Additional information from a rising dose study of doses up to 250 mg suggests that DMI may exhibit nonlinear pharmacokinetics over the usual dosing range. At a dose of clomipramine

hydrochloride capsules 200 mg, subjects who had a single blood sample taken approximately 9 to 22 hours, (median 16 hours), after the dose had plasma concentrations of up to 605 ng/mL for CMI, 781 ng/mL for DMI, and 1,386 ng/mL for both.

Distribution – CMI distributes into cerebrospinal fluid (CSF) and brain and into breast milk. DMI also distributes into CSF, with a mean CSF/plasma ratio of 2.6. The protein binding of CMI is approximately 97%, principally to albumin, and is independent of CMI concentration. The interaction between CMI and other highly protein-bound drugs has not been fully evaluated, but may be important (*see* **PRECAUTIONS, Drug Interactions**).

Metabolism – CMI is extensively biotransformed to DMI and other metabolites and their glucuronide conjugates. DMI is pharmacologically active, but its effects on OCD behaviors are unknown. These metabolites are excreted in urine and feces, following biliary elimination. After a 25 mg radiolabeled dose of CMI in two subjects, 60% and 51%, respectively, of the dose were recovered in the urine and 32% and 24%, respectively, in feces. In the same study, the combined urinary recoveries of CMI and DMI were only about 0.8% to 1.3% of the dose administered. CMI does not induce drug-metabolizing enzymes, as measured by antipyrine half-life.

Elimination – Evidence that the C_{ss} and AUC for CMI and DMI may increase disproportionately with increasing oral doses suggests that the metabolism of CMI and DMI may be capacity limited. This fact must be considered in assessing the estimates of the pharmacokinetic parameters presented below, as these were obtained in individuals exposed to doses of 150 mg. If the pharmacokinetics of CMI and DMI are nonlinear at doses above 150 mg, their elimination half-lives may be considerably lengthened at doses near the upper end of the recommended dosing range (i.e., 200 mg/day to 250 mg/day). Consequently, CMI and DMI may accumulate, and this accumulation may increase the incidence of any dose- or plasma-concentration-dependent adverse reactions, in particular seizures (*see* **WARNINGS**).

After a 150 mg dose, the half-life of CMI ranges from 19 hours to 37 hours (mean, 32 hr) and that of DMI ranges from 54 hours to 77 hours (mean, 69 hr). Steady-state levels after multiple dosing are typically reached within 7 to 14 days for CMI. Plasma concentrations of the metabolite exceed the parent drug on multiple dosing. After multiple dosing with 150 mg/day, the accumulation factor for CMI is approximately 2.5 and for DMI is 4.6. Importantly, it may take two weeks or longer to achieve this extent of accumulation at constant dosing because of the relatively long elimination half-lives of CMI and DMI (*see* **DOSAGE AND ADMINISTRATION**). The effects of hepatic and renal impairment on the disposition of clomipramine hydrochloride capsules have not been determined.

Interactions – Co-administration of haloperidol with CMI increases plasma concentrations of CMI. Co-administration of CMI with phenobarbital increases plasma concentrations of phenobarbital (*see* **PRECAUTIONS, Drug Interactions**). Younger subjects (18 to 40 years of age) tolerated CMI better and had significantly lower steady-state plasma concentrations, compared with subjects over 65 years of age. Children under 15 years of age had significantly lower plasma concentration/dose ratios, compared with adults. Plasma concentrations of CMI were significantly lower in smokers than in nonsmokers.

INDICATIONS AND USAGE

Clomipramine hydrochloride capsules USP are indicated for the treatment of obsessions and compulsions in patients with Obsessive-Compulsive Disorder (OCD). The obsessions or compulsions must cause marked distress, be time-consuming, or significantly interfere with social or occupational functioning, in order to meet the DSM-III-R (circa 1989) diagnosis of OCD.

Obsessions are recurrent, persistent ideas, thoughts, images, or impulses that are ego-dystonic. Compulsions are repetitive, purposeful, and intentional behaviors performed in response to an obsession or in a stereotyped fashion, and are recognized by the person as excessive or unreasonable.

The effectiveness of clomipramine hydrochloride capsules for the treatment of OCD was demonstrated

in multicenter, placebo-controlled, parallel-group studies, including two 10-week studies in adults and one 8-week study in children and adolescents 10 to 17 years of age. Patients in all studies had moderate-to-severe OCD (DSM-III), with mean baseline ratings on the Yale-Brown Obsessive Compulsive Scale (YBOCS) ranging from 26 to 28 and a mean baseline rating of 10 on the NIMH Clinical Global Obsessive Compulsive Scale (NIMH-OC). Patients taking CMI experienced a mean reduction of approximately 10 on the YBOCS, representing an average improvement on this scale of 35% to 42% among adults and 37% among children and adolescents. CMI-treated patients experienced a 3.5 unit decrement on the NIMH-OC. Patients on placebo showed no important clinical response on either scale. The maximum dose was 250 mg/day for most adults and 3 mg/kg/day (up to 200 mg) for all children and adolescents.

The effectiveness of clomipramine hydrochloride capsules for long-term use (i.e., for more than 10 weeks) has not been systematically evaluated in placebo-controlled trials. The physician who elects to use clomipramine hydrochloride capsules for extended periods should periodically reevaluate the long-term usefulness of the drug for the individual patient (*see* **DOSAGE AND ADMINISTRATION**).

CONTRAINDICATIONS

Clomipramine hydrochloride capsules are contraindicated in patients with a history of hypersensitivity to clomipramine hydrochloride capsules or other tricyclic antidepressants.

Monoamine Oxidase Inhibitors (MAOIs)

The use of MAOIs intended to treat psychiatric disorders with clomipramine hydrochloride capsules or within 14 days of stopping treatment with clomipramine hydrochloride capsules is contraindicated because of an increased risk of serotonin syndrome. The use of clomipramine hydrochloride capsules within 14 days of stopping an MAOI intended to treat psychiatric disorders is also contraindicated (*see* **WARNINGS and DOSAGE AND ADMINISTRATION**).

Starting clomipramine hydrochloride capsules in a patient who is being treated with linezolid or intravenous methylene blue is also contraindicated because of an increased risk of serotonin syndrome (*see* **WARNINGS and DOSAGE AND ADMINISTRATION**).

Myocardial Infarction

Clomipramine hydrochloride capsules are contraindicated during the acute recovery period after a myocardial infarction.

WARNINGS

Clinical Worsening and Suicide Risk

Patients with major depressive disorder (MDD), both adult and pediatric, may experience worsening of their depression and/or the emergence of suicidal ideation and behavior (suicidality) or unusual changes in behavior, whether or not they are taking antidepressant medications, and this risk may persist until significant remission occurs. Suicide is a known risk of depression and certain other psychiatric disorders, and these disorders themselves are the strongest predictors of suicide. There has been a long-standing concern, however, that antidepressants may have a role in inducing worsening of depression and the emergence of suicidality in certain patients during the early phases of treatment. Pooled analyses of short-term placebo-controlled trials of antidepressant drugs (SSRIs and others) showed that these drugs increase the risk of suicidal thinking and behavior (suicidality) in children, adolescents, and young adults (ages 18 to 24) with major depressive disorder (MDD) and other psychiatric disorders. Short-term studies did not show an increase in the risk of suicidality with antidepressants compared to placebo in adults beyond age 24; there was a reduction with antidepressants compared to placebo in adults aged 65 and older.

The pooled analyses of placebo-controlled trials in children and adolescents with MDD, obsessive compulsive disorder (OCD), or other psychiatric disorders included a total of 24 short-term trials of 9 antidepressant drugs in over 4,400 patients. The pooled analyses of placebo-controlled trials in adults with MDD or other psychiatric disorders included a total of 295 short-term trials (median duration of 2 months) of 11 antidepressant drugs in over 77,000 patients. There was considerable variation in risk of suicidality among drugs, but a tendency toward an increase in the younger patients for almost all drugs studied. There were differences in absolute risk of suicidality across the different indications, with the highest incidence in MDD. The risk differences (drug vs placebo), however, were relatively stable within age strata and across indications. These risk differences (drug-placebo difference in the number of cases of suicidality per 1,000 patients treated) are provided in **Table 1**.

Table 1

Age Range	Drug-Placebo Difference in Number of Cases of Suicidality per 1,000 Patients Treated
Increases Compared to Placebo	
<18	14 additional cases
18-24	5 additional cases
Decreases Compared to Placebo	
25-64	1 fewer case
≥65	6 fewer cases

No suicides occurred in any of the pediatric trials. There were suicides in the adult trials, but the number was not sufficient to reach any conclusion about drug effect on suicide.

It is unknown whether the suicidality risk extends to longer-term use, i.e., beyond several months. However, there is substantial evidence from placebo-controlled maintenance trials in adults with depression that the use of antidepressants can delay the recurrence of depression.

All patients being treated with antidepressants for any indication should be monitored appropriately and observed closely for clinical worsening, suicidality, and unusual changes in behavior, especially during the initial few months of a course of drug therapy, or at times of dose changes, either increases or decreases.

The following symptoms, anxiety, agitation, panic attacks, insomnia, irritability, hostility, aggressiveness, impulsivity, akathisia (psychomotor restlessness), hypomania, and mania, have been reported in adult and pediatric patients being treated with antidepressants for major depressive disorder as well as for other indications, both psychiatric and nonpsychiatric. Although a causal link between the emergence of such symptoms and either the worsening of depression and/or the emergence of suicidal impulses has not been established, there is concern that such symptoms may represent precursors to emerging suicidality.

Consideration should be given to changing the therapeutic regimen, including possibly discontinuing the medication, in patients whose depression is persistently worse, or who are experiencing emergent suicidality or symptoms that might be precursors to worsening depression or suicidality, especially if these symptoms are severe, abrupt in onset, or were not part of the patient's presenting symptoms.

Families and caregivers of patients being treated with antidepressants for major depressive disorder or other indications, both psychiatric and nonpsychiatric, should be alerted about the need to monitor patients for the emergence of agitation, irritability, unusual changes in behavior, and the other symptoms described above, as well as the emergence of suicidality, and to report such symptoms immediately to healthcare providers. Such monitoring should include daily observation by families and caregivers. Prescriptions for clomipramine hydrochloride should be written for the smallest quantity of capsules consistent with good patient management, in order to reduce

the risk of overdose.

Screening Patients for Bipolar Disorder – A major depressive episode may be the initial presentation of bipolar disorder. It is generally believed (though not established in controlled trials) that treating such an episode with an antidepressant alone may increase the likelihood of precipitation of a mixed/manic episode in patients at risk for bipolar disorder. Whether any of the symptoms described above represent such a conversion is unknown. However, prior to initiating treatment with an antidepressant, patients with depressive symptoms should be adequately screened to determine if they are at risk for bipolar disorder; such screening should include a detailed psychiatric history, including a family history of suicide, bipolar disorder, and depression. It should be noted that clomipramine hydrochloride is not approved for use in treating bipolar depression.

Serotonin Syndrome

The development of a potentially life-threatening serotonin syndrome has been reported with SNRIs and SSRIs, including clomipramine hydrochloride capsules, alone but particularly with concomitant use of other serotonergic drugs (including triptans, tricyclic antidepressants, fentanyl, lithium, tramadol, tryptophan, buspirone, and St. John's Wort) and with drugs that impair metabolism of serotonin (in particular, MAOIs, both those intended to treat psychiatric disorders and also others, such as linezolid and intravenous methylene blue).

Serotonin syndrome symptoms may include mental status changes (e.g., agitation, hallucinations, delirium, and coma), autonomic instability (e.g., tachycardia, labile blood pressure, dizziness, diaphoresis, flushing, hyperthermia), neuromuscular changes (e.g., tremor, rigidity, myoclonus, hyperreflexia, incoordination), seizures, and/or gastrointestinal symptoms (e.g., nausea, vomiting, diarrhea). Patients should be monitored for the emergence of serotonin syndrome.

The concomitant use of clomipramine hydrochloride capsules with MAOIs intended to treat psychiatric disorders is contraindicated. Clomipramine hydrochloride capsules should also not be started in a patient who is being treated with MAOIs such as linezolid or intravenous methylene blue. All reports with methylene blue that provided information on the route of administration involved intravenous administration in the dose range of 1 mg/kg to 8 mg/kg. No reports involved the administration of methylene blue by other routes (such as oral tablets or local tissue injection) or at lower doses. There may be circumstances when it is necessary to initiate treatment with an MAOI such as linezolid or intravenous methylene blue in a patient taking clomipramine hydrochloride capsules. Clomipramine hydrochloride capsules should be discontinued before initiating treatment with the MAOI (*see* **CONTRAINDICATIONS** *and* **DOSAGE AND ADMINISTRATION**).

If concomitant use of clomipramine hydrochloride capsules with other serotonergic drugs, including triptans, tricyclic antidepressants, fentanyl, lithium, tramadol, buspirone, tryptophan, and St. John's Wort is clinically warranted, patients should be made aware of a potential increased risk for serotonin syndrome, particularly during treatment initiation and dose increases.

Treatment with clomipramine hydrochloride capsules and any concomitant serotonergic agents should be discontinued immediately if the above events occur and supportive symptomatic treatment should be initiated.

Angle-Closure Glaucoma

The pupillary dilation that occurs following use of many antidepressant drugs including clomipramine hydrochloride capsules may trigger an angle closure attack in a patient with anatomically narrow angles who does not have a patent iridectomy.

Seizures

During premarket evaluation, seizure was identified as the most significant risk of clomipramine hydrochloride capsules use.

The observed cumulative incidence of seizures among patients exposed to clomipramine hydrochloride capsules at doses up to 300 mg/day was 0.64% at 90 days, 1.12% at 180 days, and 1.45% at 365 days. The cumulative rates correct the crude rate of 0.7% (25 of 3,519 patients) for the variable duration of exposure in clinical trials.

Although dose appears to be a predictor of seizure, there is a confounding of dose and duration of exposure, making it difficult to assess independently the effect of either factor alone. The ability to predict the occurrence of seizures in subjects exposed to doses of CMI greater than 250 mg is limited, given that the plasma concentration of CMI may be dose-dependent and may vary among subjects given the same dose. Nevertheless, prescribers are advised to limit the daily dose to a maximum of 250 mg in adults and 3 mg/kg (or 200 mg) in children and adolescents (*see* **DOSAGE AND ADMINISTRATION**).

Caution should be used in administering clomipramine hydrochloride capsules to patients with a history of seizures or other predisposing factors, e.g., brain damage of varying etiology, alcoholism, and concomitant use with other drugs that lower the seizure threshold.

Rare reports of fatalities in association with seizures have been reported by foreign postmarketing surveillance, but not in U.S. clinical trials. In some of these cases, clomipramine hydrochloride capsules had been administered with other epileptogenic agents; in others, the patients involved had possibly predisposing medical conditions. Thus a causal association between clomipramine hydrochloride capsules treatment and these fatalities has not been established.

Physicians should discuss with patients the risk of taking clomipramine hydrochloride capsules while engaging in activities in which sudden loss of consciousness could result in serious injury to the patient or others, e.g., the operation of complex machinery, driving, swimming, climbing.

DRESS

Rare cases of drug rash with eosinophilia and systemic symptoms (DRESS) have been reported with the use of clomipramine. In the event of severe acute reactions such as DRESS, discontinue clomipramine therapy immediately and institute appropriate treatment.

PRECAUTIONS

General

Suicide – Since depression is a commonly associated feature of OCD, the risk of suicide must be considered. Prescriptions for clomipramine hydrochloride capsules should be written for the smallest quantity of capsules consistent with good patient management, in order to reduce the risk of overdose.

Cardiovascular Effects – Modest orthostatic decreases in blood pressure and modest tachycardia were each seen in approximately 20% of patients taking clomipramine hydrochloride capsules in clinical trials; but patients were frequently asymptomatic. Among approximately 1,400 patients treated with CMI in the premarketing experience who had ECGs, 1.5% developed abnormalities during treatment, compared with 3.1% of patients receiving active control drugs and 0.7% of patients receiving placebo. The most common ECG changes were PVCs, ST-T wave changes, and intraventricular conduction abnormalities. These changes were rarely associated with significant clinical symptoms. Nevertheless, caution is necessary in treating patients with known cardiovascular disease, and gradual dose titration is recommended.

Psychosis, Confusion, and Other Neuropsychiatric Phenomena – Patients treated with clomipramine hydrochloride capsules have been reported to show a variety of neuropsychiatric signs and symptoms including delusions, hallucinations, psychotic episodes, confusion, and paranoia. Because of the uncontrolled nature of many of the studies, it is impossible to provide a precise estimate of the extent of risk imposed by treatment with clomipramine hydrochloride capsules. As with tricyclic

antidepressants to which they are closely related, clomipramine hydrochloride capsules may precipitate an acute psychotic episode in patients with unrecognized schizophrenia.

Mania/Hypomania – During premarketing testing of clomipramine hydrochloride capsules in patients with affective disorder, hypomania or mania was precipitated in several patients. Activation of mania or hypomania has also been reported in a small proportion of patients with affective disorder treated with marketed tricyclic antidepressants, which are closely related to clomipramine hydrochloride capsules.

Hepatic Changes – During premarketing testing, clomipramine hydrochloride capsules were occasionally associated with elevations in SGOT and SGPT (pooled incidence of approximately 1% and 3%, respectively) of potential clinical importance (i.e., values greater than 3 times the upper limit of normal). In the vast majority of instances, these enzyme increases were not associated with other clinical findings suggestive of hepatic injury; moreover, none were jaundiced. Rare reports of more severe liver injury, some fatal, have been recorded in foreign postmarketing experience. Caution is indicated in treating patients with known liver disease, and periodic monitoring of hepatic enzyme levels is recommended in such patients.

Hematologic Changes – Although no instances of severe hematologic toxicity were seen in the premarketing experience with clomipramine hydrochloride capsules, there have been postmarketing reports of leukopenia, agranulocytosis, thrombocytopenia, anemia, and pancytopenia in association with clomipramine hydrochloride capsules use. As is the case with tricyclic antidepressants to which clomipramine hydrochloride capsules are closely related, leukocyte and differential blood counts should be obtained in patients who develop fever and sore throat during treatment with clomipramine hydrochloride capsules.

Central Nervous System – More than 30 cases of hyperthermia have been recorded by nondomestic postmarketing surveillance systems. Most cases occurred when clomipramine hydrochloride capsules were used in combination with other drugs. When clomipramine hydrochloride capsules and a neuroleptic were used concomitantly, the cases were sometimes considered to be examples of a neuroleptic malignant syndrome.

Sexual Dysfunction – The rate of sexual dysfunction in male patients with OCD who were treated with clomipramine hydrochloride capsules in the premarketing experience was markedly increased compared with placebo controls (i.e., 42% experienced ejaculatory failure and 20% experienced impotence, compared with 2.0% and 2.6%, respectively, in the placebo group). Approximately 85% of males with sexual dysfunction chose to continue treatment.

Hyponatremia – Hyponatremia has occurred as a result of treatment with clomipramine. In many cases, hyponatremia appears to be the result of the syndrome of inappropriate antidiuretic hormone secretion (SIADH). Elderly patients may be at greater risk of developing hyponatremia with a serotonergic antidepressant. Also, patients taking diuretics or who are otherwise volume-depleted can be at greater risk. Discontinuation of Clomipramine hydrochloride capsules in patients with symptomatic hyponatremia and appropriate medical intervention should be instituted. Signs and symptoms of hyponatremia include headache, difficulty concentrating, memory impairment, confusion, weakness, and unsteadiness, which can lead to falls. More severe and/or acute cases have included hallucination, syncope, seizure, coma, respiratory arrest, and death.

Weight Changes – In controlled studies of OCD, weight gain was reported in 18% of patients receiving clomipramine hydrochloride capsules, compared with 1% of patients receiving placebo. In these studies, 28% of patients receiving clomipramine hydrochloride capsules had a weight gain of at least 7% of their initial body weight, compared with 4% of patients receiving placebo. Several patients had weight gains in excess of 25% of their initial body weight. Conversely, 5% of patients receiving clomipramine hydrochloride capsules and 1% receiving placebo had weight losses of at least 7% of their initial body weight.

Electroconvulsive Therapy – As with closely related tricyclic antidepressants, concurrent administration of clomipramine hydrochloride capsules with electroconvulsive therapy may increase the risks; such treatment should be limited to those patients for whom it is essential, since there is limited clinical experience.

Surgery – Prior to elective surgery with general anesthetics, therapy with clomipramine hydrochloride capsules should be discontinued for as long as is clinically feasible, and the anesthetist should be advised.

Use in Concomitant Illness – As with closely related tricyclic antidepressants, clomipramine hydrochloride capsules should be used with caution in the following:

1. Hyperthyroid patients or patients receiving thyroid medication, because of the possibility of cardiac toxicity;
2. Patients with increased intraocular pressure, a history of narrow-angle glaucoma, or urinary retention, because of the anticholinergic properties of the drug;
3. Patients with tumors of the adrenal medulla (e.g., pheochromocytoma, neuroblastoma) in whom the drug may provoke hypertensive crises;
4. Patients with significantly impaired renal function.

Withdrawal Symptoms – A variety of withdrawal symptoms have been reported in association with abrupt discontinuation of clomipramine hydrochloride capsules, including dizziness, nausea, vomiting, headache, malaise, sleep disturbance, hyperthermia, and irritability. In addition, such patients may experience a worsening of psychiatric status. While the withdrawal effects of clomipramine hydrochloride capsules have not been systematically evaluated in controlled trials, they are well known with closely related tricyclic antidepressants, and it is recommended that the dosage be tapered gradually and the patient monitored carefully during discontinuation (*see* **DRUG ABUSE AND DEPENDENCE**).

Information for Patients

Prescribers or other health professionals should inform patients, their families, and their caregivers about the benefits and risks associated with treatment with clomipramine hydrochloride and should counsel them in its appropriate use. A patient Medication Guide about “Antidepressant Medicines, Depression and other Serious Mental Illness, and Suicidal Thoughts or Actions” is available for clomipramine hydrochloride. The prescriber or health professional should instruct patients, their families, and their caregivers to read the Medication Guide and should assist them in understanding its contents. Patients should be given the opportunity to discuss the contents of the Medication Guide and to obtain answers to any questions they may have. The complete text of the Medication Guide is reprinted at the end of this document.

Patients should be advised of the following issues and asked to alert their prescriber if these occur while taking clomipramine hydrochloride.

Clinical Worsening and Suicide Risk

Clinical Worsening and Suicide Risk – Patients, their families, and their caregivers should be encouraged to be alert to the emergence of anxiety, agitation, panic attacks, insomnia, irritability, hostility, aggressiveness, impulsivity, akathisia (psychomotor restlessness), hypomania, mania, other unusual changes in behavior, worsening of depression, and suicidal ideation, especially early during antidepressant treatment and when the dose is adjusted up or down. Families and caregivers of patients should be advised to look for the emergence of such symptoms on a day-to-day basis, since changes may be abrupt. Such symptoms should be reported to the patient's prescriber or health professional, especially if they are severe, abrupt in onset, or were not part of the patient's presenting symptoms. Symptoms such as these may be associated with an increased risk for suicidal thinking and behavior and

indicate a need for very close monitoring and possibly changes in the medication.

Physicians are advised to discuss the following issues with patients for whom they prescribe clomipramine hydrochloride capsules:

1. The risk of seizure (*see* **WARNINGS**);
2. The relatively high incidence of sexual dysfunction among males (*see* **Sexual Dysfunction**);
3. Since clomipramine hydrochloride capsules may impair the mental and/or physical abilities required for the performance of complex tasks, and since clomipramine hydrochloride capsules are associated with a risk of seizures, patients should be cautioned about the performance of complex and hazardous tasks (*see* **WARNINGS**);
4. Patients should be cautioned about using alcohol, barbiturates, or other CNS depressants concurrently, since clomipramine hydrochloride capsules may exaggerate their response to these drugs;
5. Patients should notify their physician if they become pregnant or intend to become pregnant during therapy;
6. Patients should notify their physician if they are breast-feeding.

Patients should be advised that taking clomipramine hydrochloride capsules can cause mild pupillary dilation, which in susceptible individuals, can lead to an episode of angle-closure glaucoma. Pre-existing glaucoma is almost always open-angle glaucoma because angle-closure glaucoma, when diagnosed, can be treated definitively with iridectomy. Open-angle glaucoma is not a risk factor for angle-closure glaucoma. Patients may wish to be examined to determine whether they are susceptible to angle closure, and have a prophylactic procedure (e.g., iridectomy), if they are susceptible.

Drug Interactions

The risks of using clomipramine hydrochloride capsules in combination with other drugs have not been systematically evaluated. Given the primary CNS effects of clomipramine hydrochloride capsules, caution is advised in using them concomitantly with other CNS-active drugs (*see* **Information for Patients**). Clomipramine hydrochloride capsules should *not* be used with MAO inhibitors (*see* **CONTRAINDICATIONS**).

Close supervision and careful adjustment of dosage are required when clomipramine hydrochloride capsules are administered with anticholinergic or sympathomimetic drugs.

Several tricyclic antidepressants have been reported to block the pharmacologic effects of guanethidine, clonidine, or similar agents, and such an effect may be anticipated with CMI because of its structural similarity to other tricyclic antidepressants.

The plasma concentration of CMI has been reported to be increased by the concomitant administration of haloperidol; plasma levels of several closely related tricyclic antidepressants have been reported to be increased by the concomitant administration of methylphenidate or hepatic enzyme inhibitors (e.g., cimetidine, fluoxetine) and decreased by the concomitant administration of hepatic enzyme inducers (e.g., barbiturates, phenytoin), and such an effect may be anticipated with CMI as well. Administration of CMI has been reported to increase the plasma levels of phenobarbital, if given concomitantly (*see* **CLINICAL PHARMACOLOGY, Interactions**).

Drugs Metabolized by P450 2D6 – The biochemical activity of the drug metabolizing isozyme cytochrome P450 2D6 (debrisoquin hydroxylase) is reduced in a subset of the Caucasian population (about 7% to 10% of Caucasians are so-called “poor metabolizers”); reliable estimates of the prevalence of reduced P450 2D6 isozyme activity among Asian, African and other populations are not yet available. Poor metabolizers have higher than expected plasma concentrations of tricyclic antidepressants (TCAs) when given usual doses. Depending on the fraction of drug metabolized by P450 2D6, the increase in plasma concentration may be small, or quite large (8 fold increase in plasma AUC of the TCA). In addition, certain drugs inhibit the activity of this isozyme and make normal

metabolizers resemble poor metabolizers. An individual who is stable on a given dose of TCA may become abruptly toxic when given one of these inhibiting drugs as concomitant therapy. The drugs that inhibit cytochrome P450 2D6 include some that are not metabolized by the enzyme (quinidine; cimetidine) and many that are substrates for P450 2D6 (many other antidepressants, phenothiazines, and the Type 1C antiarrhythmics propafenone and flecainide). While all the selective serotonin reuptake inhibitors (SSRIs), e.g., fluoxetine, sertraline, paroxetine, and fluvoxamine, inhibit P450 2D6, they may vary in the extent of inhibition. Fluvoxamine has also been shown to inhibit P450 1A2, an isoform also involved in TCA metabolism. The extent to which SSRI-TCA interactions may pose clinical problems will depend on the degree of inhibition and the pharmacokinetics of the SSRI involved. Nevertheless, caution is indicated in the co-administration of TCAs with any of the SSRIs and also in switching from one class to the other. Of particular importance, sufficient time must elapse before initiating TCA treatment in a patient being withdrawn from fluoxetine, given the long half-life of the parent and active metabolite (at least 5 weeks may be necessary). Concomitant use of agents in the tricyclic antidepressant class (which includes clomipramine hydrochloride capsules) with drugs that can inhibit cytochrome P450 2D6 may require lower doses than usually prescribed for either the tricyclic antidepressant agent or the other drug. Furthermore, whenever one of these drugs is withdrawn from co-therapy, an increased dose of tricyclic antidepressant agent may be required. It is desirable to monitor TCA plasma levels whenever an agent of the tricyclic antidepressant class including clomipramine hydrochloride capsules is going to be co-administered with another drug known to be an inhibitor of P450 2D6 (and/or P450 1A2).

Because clomipramine hydrochloride capsules are highly bound to serum protein, the administration of clomipramine hydrochloride capsules to patients taking other drugs that are highly bound to protein (e.g., warfarin, digoxin) may cause an increase in plasma concentrations of these drugs, potentially resulting in adverse effects. Conversely, adverse effects may result from displacement of protein-bound clomipramine hydrochloride capsules by other highly bound drugs (*see* **CLINICAL PHARMACOLOGY, Distribution**).

Monoamine Oxidase Inhibitors (MAOIs)

(*See* **CONTRAINDICATIONS, WARNINGS, and DOSAGE AND ADMINISTRATION.**)

Serotonergic Drugs

(*See* **CONTRAINDICATIONS, WARNINGS, and DOSAGE AND ADMINISTRATION.**)

Carcinogenesis, Mutagenesis, Impairment of Fertility

No evidence of carcinogenicity was found in two 2-year bioassays in rats at doses up to 100 mg/kg, which is 24 and 4 times the maximum recommended human daily dose (MRHD) on a mg/kg and mg/m² basis, respectively, or in a 2-year bioassay in mice at doses up to 80 mg/kg, which is 20 and 1.5 times the MRHD on a mg/kg and mg/m² basis, respectively.

In reproduction studies, no effects on fertility were found in rats given up to 24 mg/kg, which is 6 times, and approximately equal to, the MRHD on a mg/kg and mg/m² basis, respectively.

Pregnancy Category C

No teratogenic effects were observed in studies performed in rats and mice at doses up to 100 mg/kg, which is 24 times the maximum recommended human daily dose (MRHD) on a mg/kg basis and 4 times (rats) and 2 times (mice) the MRHD on a mg/m² basis. Slight nonspecific embryo/fetotoxic effects were seen in the offspring of treated rats given 50 and 100 mg/kg and of treated mice given 100 mg/kg.

There are no adequate or well-controlled studies in pregnant women. Withdrawal symptoms, including jitteriness, tremor, and seizures, have been reported in neonates whose mothers had taken clomipramine hydrochloride capsules until delivery. Clomipramine hydrochloride capsules should be used during pregnancy only if the potential benefit justifies the potential risk to the fetus.

Nursing Mothers

Clomipramine hydrochloride has been found in human milk. Because of the potential for adverse reactions, a decision should be made whether to discontinue nursing or to discontinue the drug, taking into account the importance of the drug to the mother.

Pediatric Use

Safety and effectiveness in the pediatric population other than pediatric patients with OCD have not been established (*see* **BOX WARNING and WARNINGS, Clinical Worsening and Suicide Risk**). Anyone considering the use of clomipramine hydrochloride capsules in a child or adolescent must balance the potential risks with the clinical need.

In a controlled clinical trial in children and adolescents (10 to 17 years of age), 46 outpatients received clomipramine hydrochloride capsules for up to 8 weeks. In addition, 150 adolescent patients have received clomipramine hydrochloride capsules in open-label protocols for periods of several months to several years. Of the 196 adolescents studied, 50 were 13 years of age or less and 146 were 14 to 17 years of age. The adverse reaction profile in this age group (*see* **ADVERSE REACTIONS**) is similar to that observed in adults.

The risks, if any, that may be associated with clomipramine hydrochloride capsules' extended use in children and adolescents with OCD have not been systematically assessed. The evidence supporting the conclusion that clomipramine hydrochloride capsules are safe for use in children and adolescents is derived from relatively short term clinical studies and from extrapolation of experience gained with adult patients. In particular, there are no studies that directly evaluate the effects of long term clomipramine hydrochloride capsules use on the growth, development, and maturation of children and adolescents. Although there is no evidence to suggest that clomipramine hydrochloride capsules adversely affect growth, development or maturation, the absence of such findings is not adequate to rule out a potential for such effects in chronic use.

The safety and effectiveness in pediatric patients below the age of 10 have not been established. Therefore, specific recommendations cannot be made for the use of clomipramine hydrochloride capsules in pediatric patients under the age of 10.

Geriatric Use

Clinical studies of clomipramine hydrochloride capsules did not include sufficient numbers of subjects age 65 and over to determine whether they respond differently from younger subjects; 152 patients at least 60 years of age participating in various U.S. clinical trials received clomipramine hydrochloride capsules for periods of several months to several years. No unusual age-related adverse events were identified in this population. Other reported clinical experience has not identified differences in responses between the elderly and younger patients. In general, dose selection for an elderly patient should be cautious, usually starting at the low end of the dosing range, reflecting the greater frequency of decreased hepatic, renal, or cardiac function and of concomitant disease or other drug therapy.

Clomipramine hydrochloride capsules has been associated with cases of clinically significant hyponatremia. Elderly patients may be at greater risk for this adverse reaction (*see* **PRECAUTIONS, Hyponatremia**).

ADVERSE REACTIONS

Commonly Observed

The most commonly observed adverse events associated with the use of clomipramine hydrochloride capsules and not seen at an equivalent incidence among placebo-treated patients were gastrointestinal complaints, including dry mouth, constipation, nausea, dyspepsia, and anorexia; nervous system complaints, including somnolence, tremor, dizziness, nervousness, and myoclonus; genitourinary

complaints, including changed libido, ejaculatory failure, impotence, and micturition disorder; and other miscellaneous complaints, including fatigue, sweating, increased appetite, weight gain, and visual changes.

Leading to Discontinuation of Treatment

Approximately 20% of 3,616 patients who received clomipramine hydrochloride capsules in U.S. premarketing clinical trials discontinued treatment because of an adverse event. Approximately one-half of the patients who discontinued (9% of the total) had multiple complaints, none of which could be classified as primary. Where a primary reason for discontinuation could be identified, most patients discontinued because of nervous system complaints (5.4%), primarily somnolence. The second-most-frequent reason for discontinuation was digestive system complaints (1.3%), primarily vomiting and nausea.

There was no apparent relationship between the adverse events and elevated plasma drug concentrations.

Incidence in Controlled Clinical Trials

The following table enumerates adverse events that occurred at an incidence of 1% or greater among patients with OCD who received clomipramine hydrochloride capsules in adult or pediatric placebo-controlled clinical trials. The frequencies were obtained from pooled data of clinical trials involving either adults receiving clomipramine hydrochloride capsules (N=322) or placebo (N=319) or children treated with clomipramine hydrochloride capsules (N=46) or placebo (N=44). The prescriber should be aware that these figures cannot be used to predict the incidence of side effects in the course of usual medical practice, in which patient characteristics and other factors differ from those that prevailed in the clinical trials. Similarly, the cited frequencies cannot be compared with figures obtained from other clinical investigations involving different treatments, uses, and investigators. The cited figures, however, provide the physician with a basis for estimating the relative contribution of drug and nondrug factors to the incidence of side effects in the populations studied.

Incidence of Treatment-Emergent Adverse Experience in Placebo-Controlled Clinical Trials (Percentage of Patients Reporting Event)

Body System/ Adverse Event*	Adults		Children and Adolescents	
	Clomipramine Hydrochloride Capsules (N=322)	Placebo (N=319)	Clomipramine Hydrochloride Capsules (N=46)	Placebo (N=44)
Nervous System				
Somnolence	54	16	46	11
Tremor	54	2	33	2
Dizziness	54	14	41	14
Headache	52	41	28	34
Insomnia	25	15	11	7
Libido change	21	3	-	-
Nervousness	18	2	4	2
Myoclonus	13	-	2	-
Increased appetite	11	2	-	2
Paresthesia	9	3	2	2
Memory impairment	9	1	7	2
Anxiety	9	4	2	-

Twitching	7	1	4	5
Impaired concentration	5	2	-	-
Depression	5	1	-	-
Hypertonia	4	1	2	-
Sleep disorder	4	-	9	5
Psychosomatic disorder	3	-	-	-
Yawning	3	-	-	-
Confusion	3	-	2	-
Speech disorder	3	-	-	-
Abnormal dreaming	3	-	-	2
Agitation	3	-	-	-
Migraine	3	-	-	-
Depersonalization	2	-	2	-
Irritability	2	2	2	-
Emotional lability	2	-	-	2
Panic reaction	1	-	2	-
Aggressive reaction	-	-	2	-
Paresis	-	-	2	-

Skin and Appendages

Increased sweating	29	3	9	-
Rash	8	1	4	2
Pruritus	6	-	2	2
Dermatitis	2	-	-	2
Acne	2	2	-	5
Dry skin	2	-	-	5
Urticaria	1	-	-	-
Abnormal skin odor	-	-	2	-

Digestive System

Dry mouth	84	17	63	16
Constipation	47	11	22	9
Nausea	33	14	9	11
Dyspepsia	22	10	13	2
Diarrhea	13	9	7	5
Anorexia	12	-	22	2
Abdominal pain	11	9	13	16
Vomiting	7	2	7	-
Flatulence	6	3	-	2
Tooth disorder	5	-	-	-
Gastrointestinal disorder	2	-	-	2
Dysphagia	2	-	-	-
Esophagitis	1	-	-	-
Eructation	-	-	2	2
Ulcerative stomatitis	-	-	2	-

Body as a Whole

Fatigue	39	18	35	9
---------	----	----	----	---

Weight increase	18	1	2	-
Flushing	8	-	7	-
Hot flushes	5	-	2	-
Chest pain	4	4	7	-
Fever	4	-	2	7
Allergy	3	3	7	5
Pain	3	2	4	2
Local edema	2	4	-	-
Chills	2	1	-	-
Weight decrease	-	-	7	-
Otitis media	-	-	4	5
Asthenia	-	-	2	-
Halitosis	-	-	2	-

Cardiovascular System

Postural hypotension	6	-	4	-
Palpitation	4	2	4	-
Tachycardia	4	-	2	-
Syncope	-	-	2	-

Respiratory System

Pharyngitis	14	9	-	5
Rhinitis	12	10	7	9
Sinusitis	6	4	2	5
Coughing	6	6	4	5
Bronchospasm	2	-	7	2
Epistaxis	2	-	-	2
Dyspnea	-	-	2	-
Laryngitis	-	1	2	-

Urogenital System

Male and Female Patients Combined

Micturition disorder	14	2	4	2
Urinary tract infection	6	1	-	-
Micturition frequency	5	3	-	-
Urinary retention	2	-	7	-
Dysuria	2	2	-	-
Cystitis	2	-	-	-

Female Patients Only

(N=182) (N=167) (N=10) (N=21)

Dysmenorrhea	12	14	10	10
Lactation (nonpuerperal)	4	-	-	-
Menstrual disorder	4	2	-	-
Vaginitis	2	-	-	-
Leukorrhea	2	-	-	-
Breast enlargement	2	-	-	-
Breast pain	1	-	-	-
Amenorrhea	1	-	-	-

Male Patients Only	(N=140)	(N=152)	(N=36)	(N=23)
Ejaculation failure	42	2	6	-
Impotence	20	3	-	-
Special Senses				
Abnormal vision	18	4	7	2
Taste perversion	8	-	4	-
Tinnitus	6	-	4	-
Abnormal lacrimation	3	2	-	-
Mydriasis	2	-	-	-
Conjunctivitis	1	-	-	-
Anisocoria	-	-	2	-
Blepharospasm	-	-	2	-
Ocular allergy	-	-	2	-
Vestibular disorder	-	-	2	2
Musculoskeletal				
Myalgia	13	9	-	-
Back pain	6	6	-	-
Arthralgia	3	5	-	-
Muscle weakness	1	-	2	-
Hemic and Lymphatic				
Purpura	3	-	-	-
Anemia	-	-	2	2
Metabolic and Nutritional				
Thirst	2	2	-	2

*Events reported by at least 1% of clomipramine hydrochloride capsules patients are included.

Other Events Observed During the Premarketing Evaluation of Clomipramine Hydrochloride Capsules

During clinical testing in the U.S., multiple doses of clomipramine hydrochloride capsules were administered to approximately 3,600 subjects. Untoward events associated with this exposure were recorded by clinical investigators using terminology of their own choosing. Consequently, it is not possible to provide a meaningful estimate of the proportion of individuals experiencing adverse events without first grouping similar types of untoward events into a smaller number of standardized event categories.

In the tabulations that follow, a modified World Health Organization dictionary of terminology has been used to classify reported adverse events. The frequencies presented, therefore, represent the proportion of the 3,525 individuals exposed to clomipramine hydrochloride capsules who experienced an event of the type cited on at least one occasion while receiving clomipramine hydrochloride capsules. All events are included except those already listed in the previous table, those reported in terms so general as to be uninformative, and those in which an association with the drug was remote. It is important to emphasize that although the events reported occurred during treatment with clomipramine

hydrochloride capsules, they were not necessarily caused by it.

Events are further categorized by body system and listed in order of decreasing frequency according to the following definitions: frequent adverse events are those occurring on one or more occasions in at least 1/100 patients; infrequent adverse events are those occurring in 1/100 to 1/1,000 patients; rare events are those occurring in less than 1/1,000 patients.

Body as a Whole – *Infrequent* - general edema, increased susceptibility to infection, malaise. *Rare* - dependent edema, withdrawal syndrome.

Cardiovascular System – *Infrequent* - abnormal ECG, arrhythmia, bradycardia, cardiac arrest, extrasystoles, pallor. *Rare* - aneurysm, atrial flutter, bundle branch block, cardiac failure, cerebral hemorrhage, heart block, myocardial infarction, myocardial ischemia, peripheral ischemia, thrombophlebitis, vasospasm, ventricular tachycardia.

Digestive System – *Infrequent* - abnormal hepatic function, blood in stool, colitis, duodenitis, gastric ulcer, gastritis, gastroesophageal reflux, gingivitis, glossitis, hemorrhoids, hepatitis, increased saliva, irritable bowel syndrome, peptic ulcer, rectal hemorrhage, tongue ulceration, tooth caries. *Rare* - cheilitis, chronic enteritis, discolored feces, gastric dilatation, gingival bleeding, hiccup, intestinal obstruction, oral/pharyngeal edema, paralytic ileus, salivary gland enlargement.

Endocrine System – *Infrequent* - hypothyroidism. *Rare* - goiter, gynecomastia, hyperthyroidism.

Hemic and Lymphatic System – *Infrequent* - lymphadenopathy. *Rare* - leukemoid reaction, lymphoma-like disorder, marrow depression.

Metabolic and Nutritional Disorder – *Infrequent* - dehydration, diabetes mellitus, gout, hypercholesterolemia, hyperglycemia, hyperuricemia, hypokalemia. *Rare* - fat intolerance, glycosuria.

Musculoskeletal System – *Infrequent* - arthrosis. *Rare* - dystonia, exostosis, lupus erythematosus rash, bruising, myopathy, myositis, polyarteritis nodosa, torticollis.

Nervous System – *Frequent* - abnormal thinking, vertigo. *Infrequent* - abnormal coordination, abnormal EEG, abnormal gait, apathy, ataxia, coma, convulsions, delirium, delusion, dyskinesia, dysphonia, encephalopathy, euphoria, extrapyramidal disorder, hallucinations, hostility, hyperkinesia, hypnagogic hallucinations, hypokinesia, leg cramps, manic reaction, neuralgia, paranoia, phobic disorder, psychosis, sensory disturbance, somnambulism, stimulation, suicidal ideation, suicide attempt, teeth-grinding. *Rare* - anticholinergic syndrome, aphasia, apraxia, catalepsy, cholinergic syndrome, choreoathetosis, generalized spasm, hemiparesis, hyperesthesia, hyperreflexia, hypoesthesia, illusion, impaired impulse control, indecisiveness, mutism, neuropathy, nystagmus, oculogyric crisis, oculomotor nerve paralysis, schizophrenic reaction, stupor, suicide.

Respiratory System – *Infrequent* - bronchitis, hyperventilation, increased sputum, pneumonia. *Rare* - cyanosis, hemoptysis, hypoventilation, laryngismus.

Skin and Appendages – *Infrequent* - alopecia, cellulitis, cyst, eczema, erythematous rash, genital pruritus, maculopapular rash, photosensitivity reaction, psoriasis, pustular rash, skin discoloration. *Rare* - chloasma, folliculitis, hypertrichosis, piloerection, seborrhea, skin hypertrophy, skin ulceration.

Special Senses – *Infrequent* - abnormal accommodation, deafness, diplopia, earache, eye pain, foreign body sensation, hyperacusis, parosmia, photophobia, scleritis, taste loss. *Rare* - blepharitis, chromatopsia, conjunctival hemorrhage, exophthalmos, glaucoma, keratitis, labyrinth disorder, night blindness, retinal disorder, strabismus, visual field defect.

Urogenital System – *Infrequent* - endometriosis, epididymitis, hematuria, nocturia, oliguria, ovarian

cyst, perineal pain, polyuria, prostatic disorder, renal calculus, renal pain, urethral disorder, urinary incontinence, uterine hemorrhage, vaginal hemorrhage. *Rare* - albuminuria, anorgasm, breast engorgement, breast fibroadenosis, cervical dysplasia, endometrial hyperplasia, premature ejaculation, pyelonephritis, pyuria, renal cyst, uterine inflammation, vulvar disorder.

Postmarketing Experience

The following adverse drug reaction has been reported during post-approval use of clomipramine hydrochloride capsules. Because this reaction is reported voluntarily from a population of uncertain size, it is not always possible to reliably estimate frequency.

Eye Disorders – Angle-closure glaucoma.

Immune System Disorders – Drug Rash with Eosinophilia and Systemic Symptoms (DRESS)

Metabolism and Nutrition Disorder - Hyponatremia

Endocrine Disorders - Syndrome of inappropriate antidiuretic hormone secretion (SIADH)

DRUG ABUSE AND DEPENDENCE

Clomipramine hydrochloride capsules have not been systematically studied in animals or humans for its potential for abuse, tolerance, or physical dependence. While a variety of withdrawal symptoms have been described in association with clomipramine hydrochloride capsules discontinuation (*see PRECAUTIONS, Withdrawal Symptoms*), there is no evidence for drug-seeking behavior, except for a single report of potential clomipramine hydrochloride capsules abuse by a patient with a history of dependence on codeine, benzodiazepines, and multiple psychoactive drugs. The patient received clomipramine hydrochloride capsules for depression and panic attacks and appeared to become dependent after hospital discharge.

Despite the lack of evidence suggesting an abuse liability for clomipramine hydrochloride capsules in foreign marketing, it is not possible to predict the extent to which clomipramine hydrochloride capsules might be misused or abused once marketed in the U.S. Consequently, physicians should carefully evaluate patients for a history of drug abuse and follow such patients closely.

OVERDOSAGE

Deaths may occur from overdosage with this class of drugs. Multiple drug ingestion (including alcohol) is common in deliberate tricyclic overdose. As the management is complex and changing, it is recommended that the physician contact a poison control center for current information on treatment. Signs and symptoms of toxicity develop rapidly after tricyclic overdose. Therefore, hospital monitoring is required as soon as possible.

Human Experience

In U.S. clinical trials, 2 deaths occurred in 12 reported cases of acute overdosage with clomipramine hydrochloride capsules either alone or in combination with other drugs. One death involved a patient suspected of ingesting a dose of 7,000 mg. The second death involved a patient suspected of ingesting a dose of 5,750 mg. The 10 nonfatal cases involved doses of up to 5,000 mg, accompanied by plasma levels of up to 1,010 ng/mL. All 10 patients completely recovered. Among reports from other countries of clomipramine hydrochloride capsules overdose, the lowest dose associated with a fatality was 750 mg. Based upon postmarketing reports in the United Kingdom, CMI's lethality in overdose is considered to be similar to that reported for closely related tricyclic compounds marketed as antidepressants.

Manifestations

Signs and symptoms vary in severity depending upon factors such as the amount of drug absorbed, the

age of the patient, and the time elapsed since drug ingestion. Critical manifestations of overdose include cardiac dysrhythmias, severe hypotension, convulsions, and CNS depression including coma. Changes in the electrocardiogram, particularly in QRS axis or width, are clinically significant indicators of tricyclic toxicity. Other CNS manifestations may include drowsiness, stupor, ataxia, restlessness, agitation, delirium, severe perspiration, hyperactive reflexes, muscle rigidity, and athetoid and choreiform movements. Cardiac abnormalities may include tachycardia, signs of congestive heart failure, and in very rare cases, cardiac arrest. Respiratory depression, cyanosis, shock, vomiting, hyperpyrexia, mydriasis, and oliguria or anuria may also be present.

Management

Obtain an ECG and immediately initiate cardiac monitoring. Protect the patient's airway, establish an intravenous line, and initiate gastric decontamination. A minimum of 6 hours of observation with cardiac monitoring and observation for signs of CNS or respiratory depression, hypotension, cardiac dysrhythmias and/or conduction blocks, and seizures is necessary.

If signs of toxicity occur at any time during this period, extended monitoring is required. There are case reports of patients succumbing to fatal dysrhythmias late after overdose; these patients had clinical evidence of significant poisoning prior to death and most received inadequate gastrointestinal decontamination. Monitoring of plasma drug levels should not guide management of the patient.

Gastrointestinal Decontamination – All patients suspected of tricyclic overdose should receive gastrointestinal decontamination. This should include large volume gastric lavage followed by activated charcoal. If consciousness is impaired, the airway should be secured prior to lavage. Emesis is contraindicated.

Cardiovascular – A maximal limb-lead QRS duration of ≥ 0.10 seconds may be the best indication of the severity of the overdose. Intravenous sodium bicarbonate should be used to maintain the serum pH in the range of 7.45 to 7.55. If the pH response is inadequate, hyperventilation may also be used. Concomitant use of hyperventilation and sodium bicarbonate should be done with extreme caution, with frequent pH monitoring. A pH >7.60 or a $pCO_2 <20$ mmHg is undesirable. Dysrhythmias unresponsive to sodium bicarbonate therapy/hyperventilation may respond to lidocaine, bretylium, or phenytoin. Type 1A and 1C antiarrhythmics are generally contraindicated (e.g., quinidine, disopyramide, and procainamide).

In rare instances, hemoperfusion may be beneficial in acute refractory cardiovascular instability in patients with acute toxicity. However, hemodialysis, peritoneal dialysis, exchange transfusions, and forced diuresis generally have been reported as ineffective in tricyclic poisoning.

CNS – In patients with CNS depression, early intubation is advised because of the potential for abrupt deterioration. Seizures should be controlled with benzodiazepines, or if these are ineffective, other anticonvulsants (e.g., phenobarbital, phenytoin). Physostigmine is not recommended except to treat life-threatening symptoms that have been unresponsive to other therapies, and then only in consultation with a poison control center.

Psychiatric Follow-up – Since overdosage is often deliberate, patients may attempt suicide by other means during the recovery phase. Psychiatric referral may be appropriate.

Pediatric Management – The principles of management of child and adult overdoses are similar. It is strongly recommended that the physician contact the local poison control center for specific pediatric treatment.

DOSAGE AND ADMINISTRATION

The treatment regimens described below are based on those used in controlled clinical trials of

clomipramine hydrochloride capsules in 520 adults, and 91 children and adolescents with OCD. During initial titration, clomipramine hydrochloride capsules should be given in divided doses with meals to reduce gastrointestinal side effects. The goal of this initial titration phase is to minimize side effects by permitting tolerance to side effects to develop or allowing the patient time to adapt if tolerance does not develop.

Because both CMI and its active metabolite, DMI, have long elimination half-lives, the prescriber should take into consideration the fact that steady-state plasma levels may not be achieved until 2 to 3 weeks after dosage change (*see* **CLINICAL PHARMACOLOGY**). Therefore, after initial titration, it may be appropriate to wait 2 to 3 weeks between further dosage adjustments.

Initial Treatment/Dose Adjustment (Adults)

Treatment with clomipramine hydrochloride capsules should be initiated at a dosage of 25 mg daily and gradually increased, as tolerated, to approximately 100 mg during the first 2 weeks. During initial titration, clomipramine hydrochloride capsules should be given in divided doses with meals to reduce gastrointestinal side effects. Thereafter, the dosage may be increased gradually over the next several weeks, up to a maximum of 250 mg daily. After titration, the total daily dose may be given once daily at bedtime to minimize daytime sedation.

Initial Treatment/Dose Adjustment (Children and Adolescents)

As with adults, the starting dose is 25 mg daily and should be gradually increased (also given in divided doses with meals to reduce gastrointestinal side effects) during the first 2 weeks, as tolerated, up to a daily maximum of 3 mg/kg or 100 mg, whichever is smaller. Thereafter, the dosage may be increased gradually over the next several weeks up to a daily maximum of 3 mg/kg or 200 mg, whichever is smaller (*see* **PRECAUTIONS, Pediatric Use**). As with adults, after titration, the total daily dose may be given once daily at bedtime to minimize daytime sedation.

Maintenance/Continuation Treatment (Adults, Children, and Adolescents)

While there are no systematic studies that answer the question of how long to continue clomipramine hydrochloride capsules, OCD is a chronic condition and it is reasonable to consider continuation for a responding patient. Although the efficacy of clomipramine hydrochloride capsules after 10 weeks has not been documented in controlled trials, patients have been continued in therapy under double-blind conditions for up to 1 year without loss of benefit. However, dosage adjustments should be made to maintain the patient on the lowest effective dosage, and patients should be periodically reassessed to determine the need for treatment. During maintenance, the total daily dose may be given once daily at bedtime.

Switching a Patient To or From a Monoamine Oxidase Inhibitor (MAOI) Intended to Treat Psychiatric Disorders

At least 14 days should elapse between discontinuation of an MAOI intended to treat psychiatric disorders and initiation of therapy with clomipramine hydrochloride capsules. Conversely, at least 14 days should be allowed after stopping clomipramine hydrochloride capsules before starting an MAOI intended to treat psychiatric disorders (*see* **CONTRAINDICATIONS**).

Use of Clomipramine Hydrochloride Capsules With Other MAOIs, Such as Linezolid or Methylene Blue

Do not start clomipramine hydrochloride capsules in a patient who is being treated with linezolid or intravenous methylene blue because there is increased risk of serotonin syndrome. In a patient who requires more urgent treatment of a psychiatric condition, other interventions, including hospitalization, should be considered (*see* **CONTRAINDICATIONS**).

In some cases, a patient already receiving clomipramine hydrochloride capsules therapy may require urgent treatment with linezolid or intravenous methylene blue. If acceptable alternatives to linezolid or

intravenous methylene blue treatment are not available and the potential benefits of linezolid or intravenous methylene blue treatment are judged to outweigh the risks of serotonin syndrome in a particular patient, clomipramine hydrochloride capsules should be stopped promptly, and linezolid or intravenous methylene blue can be administered. The patient should be monitored for symptoms of serotonin syndrome for two weeks or until 24 hours after the last dose of linezolid or intravenous methylene blue, whichever comes first. Therapy with clomipramine hydrochloride capsules may be resumed 24 hours after the last dose of linezolid or intravenous methylene blue (*see* **WARNINGS**).

The risk of administering methylene blue by non-intravenous routes (such as oral tablets or by local injection) or in intravenous doses much lower than 1 mg/kg with clomipramine hydrochloride capsules is unclear. The clinician should, nevertheless, be aware of the possibility of emergent symptoms of serotonin syndrome with such use (*see* **WARNINGS**).

HOW SUPPLIED

Clomipramine Hydrochloride Capsules USP

Capsules 25 mg – the body is opaque ivory with "T" and the cap is opaque orange with "280" imprinted on it

Bottles of 100.....NDC 52817-280-10

Capsules 50 mg – the body is opaque ivory with "T" and the cap is opaque light blue with "281" imprinted on it

Bottles of 100.....NDC 52817-281-10

Capsules 75 mg – the body is opaque ivory with "T" and the cap is opaque yellow with "282" imprinted on it

Bottles of 100.....NDC 52817-282-10

STORAGE AND HANDLING

Store at 20° to 25°C (68° to 77°F) [see USP Controlled Room Temperature].

Dispense in well-closed containers with a child-resistant closure. Protect from moisture.

ANIMAL TOXICOLOGY

Phospholipidosis and testicular changes, commonly associated with tricyclic compounds, have been observed with clomipramine hydrochloride capsules. In chronic rat studies, changes related to clomipramine hydrochloride capsules consisted of systemic phospholipidosis, alterations in the testes (atrophy, mineralization) and secondary changes in other tissues. In addition cardiac thrombosis and dermatitis/keratitis were observed in rats treated for 2 years at doses which were 24 and 10 times the maximum recommended human daily dose (MRHD), respectively, on a mg/kg basis, and 4 and 1.5 times the MRHD, respectively, on a mg/m² basis.

Manufactured by
Tulex Pharmaceuticals
5 Cedarbrook Drive,
Cranbury, NJ 08512

Distributed By
TruPharma, LLC
Tampa FL33609

Medication Guide - Clomipramine Hydrochloride Capsules, USP

(kloe mip' ra meen hye" droe klor'ide)

Antidepressant Medicines, Depression and other Serious Mental Illnesses, and Suicidal Thoughts or Actions

Read the Medication Guide that comes with you or your family member's antidepressant medicine. This Medication Guide is only about the risk of suicidal thoughts and actions with antidepressant medicines. **Talk to your, or your family member's, healthcare provider about:**

- all risks and benefits of treatment with antidepressant medicines
- all treatment choices for depression or other serious mental illness

What is the most important information I should know about antidepressant medicines, depression and other serious mental illnesses, and suicidal thoughts or actions?

1. **Antidepressant medicines may increase suicidal thoughts or actions in some children, teenagers, and young adults within the first few months of treatment.**
2. **Depression and other serious mental illnesses are the most important causes of suicidal thoughts and actions. Some people may have a particularly high risk of having suicidal thoughts or actions.** These include people who have (or have a family history of) bipolar illness (also called manic-depressive illness) or suicidal thoughts or actions.
3. **How can I watch for and try to prevent suicidal thoughts and actions in myself or a family member?**
 - Pay close attention to any changes, especially sudden changes, in mood, behaviors, thoughts, or feelings. This is very important when an antidepressant medicine is started or when the dose is changed.
 - Call the healthcare provider right away to report new or sudden changes in mood, behavior, thoughts, or feelings.
 - Keep all follow-up visits with the healthcare provider as scheduled. Call the healthcare provider between visits as needed, especially if you have concerns about symptoms.

Call a healthcare provider right away if you or your family member has any of the following symptoms, especially if they are new, worse, or worry you:

- thoughts about suicide or dying
- attempts to commit suicide
- new or worse depression
- new or worse anxiety
- feeling very agitated or restless
- panic attacks
- trouble sleeping (insomnia)
- new or worse irritability
- acting aggressive, being angry, or violent
- acting on dangerous impulses
- an extreme increase in activity and talking (mania)

- other unusual changes in behavior or mood

Low Salt (sodium) levels in the blood. Elderly people may be at greater risk for this. Symptoms may include:

- headache
- weakness or feeling unsteady
- confusion, problems concentrating or thinking or memory problems

Visual problems

- eye pain
- changes in vision
- swelling or redness in or around the eye

Only some people are at risk for these problems. You may want to undergo an eye examination to see if you are at risk and receive preventative treatment if you are.

Who should not take clomipramine hydrochloride capsules?

Do not take clomipramine hydrochloride capsules if you:

- Take a monoamine oxidase inhibitor (MAOI). Ask your healthcare provider or pharmacist if you are not sure if you take an MAOI, including the antibiotic linezolid.
 - Do not take an MAOI within 2 weeks of stopping clomipramine hydrochloride capsules unless directed to do so by your physician.
 - Do not start clomipramine hydrochloride capsules if you stopped taking an MAOI in the last 2 weeks unless directed to do so by your physician.

What else do I need to know about antidepressant medicines?

- **Never stop an antidepressant medicine without first talking to a healthcare provider.** Stopping an antidepressant medicine suddenly can cause other symptoms.
- **Antidepressants are medicines used to treat depression and other illnesses.** It is important to discuss all the risks of treating depression and also the risks of not treating it. Patients and their families or other caregivers should discuss all treatment choices with the healthcare provider, not just the use of antidepressants.
- **Antidepressant medicines have other side effects.** Talk to the healthcare provider about the side effects of the medicine prescribed for you or your family member.
- **Antidepressant medicines can interact with other medicines.** Know all of the medicines that you or your family member takes. Keep a list of all medicines to show the healthcare provider. Do not start new medicines without first checking with your healthcare provider.
- **Not all antidepressant medicines prescribed for children are FDA approved for use in children.** Talk to your child's healthcare provider for more information.

Call your doctor for medical advice about side effects. You may report side effects to FDA at 1-800-FDA-1088.

This Medication Guide has been approved by the U.S. Food and Drug Administration.

Manufactured by
Tulex Pharmaceuticals Inc.
5 Cedarbrook Drive,
Cranbury, NJ 08512
Distributed By:

TruPharma, LLC

Tampa, FL33609

PI2801000300 Rev 04/2020

PACKAGE LABEL - PRINCIPAL DISPLAY PANEL - 25 mg Strength

NDC 52817-280-10

100 Capsules

clomiPRAMINE Hydrochloride Capsules, USP

25 mg Rx only

Pharmacist: Please dispense with attached medication guide

TULEX Pharmaceuticals

LA2801000300 04/2020

Lot:

Exp:

USUAL DOSAGE: See package insert .

STORAGE: Store at 20 °C to 25 °C (68 °F to 77 °F) [see USP Controlled Room Temperature].

Dispense in well-closed containers with a child-resistant closure. Protect from moisture.

Do not accept if seal over bottle opening is broken or missing.

Each capsule contains:

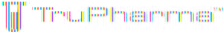
Clomipramine Hydrochloride USP ... 25 mg

Manufactured by
Tulex Pharmaceuticals Inc.
Cranbury, NJ 08512

Distributed By:

TruPharma, LLC

Tampa, FL33609

NDC 52817-280-10		Each capsule contains: Clomipramine Hydrochloride USP 25 mg
clomiPRAMINE Hydrochloride Capsules, USP 25 mg		Usual Dosage: See package insert.
		Storage: Store at 20°C to 25°C (68°F to 77°F) [see USP Controlled Room Temperature].
		Dispense in well-closed containers with a child-resistant closure.
		Protect from moisture.
		Do not accept if seal over bottle opening is broken or missing.
<div style="border: 1px solid black; padding: 2px; width: fit-content; margin: 0 auto;"> <small>PHARMACIST: DISPENSE WITH MEDICATION GUIDE PROVIDED SEPARATELY TO EACH PATIENT.</small> </div>	Manufactured by: Tulex Pharmaceuticals Inc. Cranbury, NJ 08512 LA2801000300 04/2020	Distributed by: TruPharma, LLC Tampa, FL 33609
	Rx only 100 Capsules	

PACKAGE LABEL - PRINCIPAL DISPLAY PANEL - 50 mg Strength

NDC 52817-281-10

100 Capsules

clomiPRAMINE Hydrochloride Capsules, USP

50 mg Rx only

Pharmacist: Please dispense with attached medication guide

TULEX Pharmaceuticals

LA2811000300 04/2020

Lot:

Exp:

USUAL DOSAGE: See package insert .

STORAGE: Store at 20 °C to 25 °C (68 °F to 77 °F) [see USP Controlled Room Temperature].

Dispense in well-closed containers with a child-resistant closure. Protect from moisture.

Do not accept if seal over bottle opening is broken or missing.

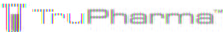
Each capsule contains:

Clomipramine Hydrochloride USP ...50 mg

Manufactured by
Tulex Pharmaceuticals Inc.
Cranbury, NJ 08512

Distributed By:
TruPharma, LLC

Tampa, FL33609

NDC 52817-281-10	
clomiPRAMINE Hydrochloride Capsules, USP 50 mg	Each capsule contains: Clomipramine Hydrochloride USP 50 mg
	Usual Dosage: See package insert.
Storage: Store at 20°C to 25°C (68°F to 77°F) [see USP Controlled Room Temperature].	
Dispense in well-closed containers with a child-resistant closure.	
Protect from moisture.	
Do not accept if seal over bottle opening is broken or missing.	
PHARMACIST: DISPENSE WITH MEDICATION GUIDE PROVIDED SEPARATELY TO EACH PATIENT.	Manufactured by: Tulex Pharmaceuticals Inc. Cranbury, NJ 08512
 Rx only	Distributed by: TruPharma, LLC Tampa, FL 33609
100 Capsules	LA2811000300 04/2020

PACKAGE LABEL - PRINCIPAL DISPLAY PANEL - 75 mg Strength

NDC 52817-282-10

100 Capsules

clomiPRAMINE Hydrochloride Capsules, USP

75 mg Rx only

Pharmacist: Please dispense with attached medication guide

TULEX Pharmaceuticals

LA2821000300 04/2020

Lot:

Exp:

USUAL DOSAGE: See package insert .

STORAGE: Store at 20 °C to 25 °C (68 °F to 77 °F) [see USP Controlled Room Temperature].

Dispense in well-closed containers with a child-resistant closure. Protect from moisture.

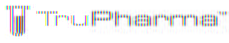
Do not accept if seal over bottle opening is broken or missing.

Each capsule contains:

Clomipramine Hydrochloride USP ...75 mg

Manufactured by
Tulex Pharmaceuticals Inc.
Cranbury, NJ 08512

Distributed By:
 TruPharma, LLC
 Tampa, FL33609

NDC 52817-282-10		Each capsule contains: Clomipramine Hydrochloride USP 75 mg
clomiPRAMINE Hydrochloride Capsules, USP 75 mg		Usual Dosage: See package insert.
PHARMACIST: DISPENSE WITH MEDICATION GUIDE PROVIDED SEPARATELY TO EACH PATIENT.		Storage: Store at 20°C to 25°C (68°F to 77°F) [see USP Controlled Room Temperature].
 Rx only 100 Capsules		Dispense in well-closed containers with a child-resistant closure.
		Protect from moisture.
		Do not accept if seal over bottle opening is broken or missing.
		Manufactured by: Tulex Pharmaceuticals Inc. Cranbury, NJ 08512 LA2821000300 04/2020
		Distributed by: TruPharma, LLC Tampa, FL 33609

CLOMIPRAMINE HYDROCHLORIDE

clomipramine hydrochloride capsule

Product Information

Product Type	HUMAN PRESCRIPTION DRUG	Item Code (Source)	NDC:52817-280
Route of Administration	ORAL		

Active Ingredient/Active Moiety

Ingredient Name	Basis of Strength	Strength
CLOMIPRAMINE HYDROCHLORIDE (UNII: 2LXW0L6GWJ) (CLOMIPRAMINE - UNII:NUV44L116D)	CLOMIPRAMINE HYDROCHLORIDE	25 mg

Inactive Ingredients

Ingredient Name	Strength
TITANIUM DIOXIDE (UNII: 15FIX9V2JP)	
SILICON DIOXIDE (UNII: ETJ7Z6XBU4)	
FD&C BLUE NO. 1 (UNII: H3R47K3TBD)	
STARCH, CORN (UNII: O8232NY3SJ)	
FD&C RED NO. 3 (UNII: PN2ZH5LOQY)	
D&C YELLOW NO. 10 (UNII: 35SW5USQ3G)	
FD&C YELLOW NO. 6 (UNII: H77VEI93A8)	
GELATIN (UNII: 2G86QN327L)	
MAGNESIUM STEARATE (UNII: 70097M6I30)	

Product Characteristics

Color	white (ivory) , orange (orange)	Score	no score
--------------	---------------------------------	--------------	----------

Shape	CAPSULE	Size	18 mm
Flavor		Imprint Code	T280
Contains			

Packaging				
#	Item Code	Package Description	Marketing Start Date	Marketing End Date
1	NDC:528 17-280-10	100 in 1 BOTTLE; Type 0: Not a Combination Product	09/01/2020	

Marketing Information			
Marketing Category	Application Number or Monograph Citation	Marketing Start Date	Marketing End Date
ANDA	ANDA210653	09/01/2020	

CLOMIPRAMINE HYDROCHLORIDE

clomipramine hydrochloride capsule

Product Information			
Product Type	HUMAN PRESCRIPTION DRUG	Item Code (Source)	NDC:528 17-281
Route of Administration	ORAL		

Active Ingredient/Active Moiety		
Ingredient Name	Basis of Strength	Strength
CLOMIPRAMINE HYDRO CHLORIDE (UNII: 2LXW0L6GWJ) (CLOMIPRAMINE - UNII:NUV44L116D)	CLOMIPRAMINE HYDROCHLORIDE	50 mg

Inactive Ingredients	
Ingredient Name	Strength
D&C YELLOW NO. 10 (UNII: 35SW5USQ3G)	
FD&C BLUE NO. 1 (UNII: H3R47K3TBD)	
FD&C RED NO. 40 (UNII: WZB9127XOA)	
GELATIN (UNII: 2G86QN327L)	
MAGNESIUM STEARATE (UNII: 70097M6I30)	
STARCH, CORN (UNII: O8232NY3SJ)	
TITANIUM DIOXIDE (UNII: 15FIX9V2JP)	
SILICON DIOXIDE (UNII: ETJ7Z6XBU4)	
FD&C RED NO. 3 (UNII: PN2ZH5LOQY)	

Product Characteristics			
Color	white (ivory) , blue (light blue)	Score	no score
Shape	CAPSULE	Size	19 mm
Flavor		Imprint Code	T281
Contains			

Packaging

#	Item Code	Package Description	Marketing Start Date	Marketing End Date
1	NDC:52817-281-10	100 in 1 BOTTLE; Type 0: Not a Combination Product	09/01/2020	

Marketing Information

Marketing Category	Application Number or Monograph Citation	Marketing Start Date	Marketing End Date
ANDA	ANDA210653	09/01/2020	

CLOMIPRAMINE HYDROCHLORIDE

clomipramine hydrochloride capsule

Product Information

Product Type	HUMAN PRESCRIPTION DRUG	Item Code (Source)	NDC:52817-282
Route of Administration	ORAL		

Active Ingredient/Active Moiety

Ingredient Name	Basis of Strength	Strength
CLOMIPRAMINE HYDROCHLORIDE (UNII: 2LXW0L6GWJ) (CLOMIPRAMINE - UNII:NUV44L116D)	CLOMIPRAMINE HYDROCHLORIDE	75 mg

Inactive Ingredients

Ingredient Name	Strength
D&C YELLOW NO. 10 (UNII: 35SW5USQ3G)	
FD&C YELLOW NO. 6 (UNII: H77VEI93A8)	
GELATIN (UNII: 2G86QN327L)	
MAGNESIUM STEARATE (UNII: 70097M6I30)	
STARCH, CORN (UNII: O8232NY3SJ)	
TITANIUM DIOXIDE (UNII: 15FIX9V2JP)	
SILICON DIOXIDE (UNII: ETJ7Z6XBU4)	

Product Characteristics

Color	white (ivory) , yellow (yellow)	Score	no score
Shape	CAPSULE	Size	19mm
Flavor		Imprint Code	T282
Contains			

Packaging

#	Item Code	Package Description	Marketing Start Date	Marketing End Date
1	NDC:52817-282-10	100 in 1 BOTTLE; Type 0: Not a Combination Product	09/01/2020	

Marketing Information

Marketing Category	Application Number or Monograph Citation	Marketing Start Date	Marketing End Date
ANDA	ANDA210653	09/01/2020	

Labeler - TruPharma LLC (078533947)

Registrant - Tulex Pharmaceuticals, Inc. (080119240)

Revised: 8/2020

TruPharma LLC