

**CLODERM- clocortolone pivalate cream**  
**EPI Health, Inc**

-----  
**Cloderm® Cream, 0.1%**  
**(clocortolone pivalate)**

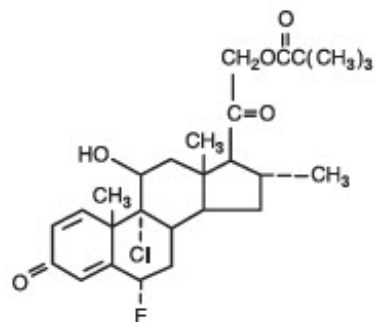
**Rx Only**

**FOR TOPICAL DERMATOLOGIC USE ONLY—**  
**NOT FOR OPHTHALMIC, ORAL, OR INTRAVAGINAL USE.**  
**WARNING: KEEP OUT OF REACH OF CHILDREN**

**DESCRIPTION**

Cloderm Cream 0.1% contains the medium potency topical corticosteroid, clocortolone pivalate, in a specially formulated water-washable emollient cream base consisting of purified water, white petrolatum, mineral oil, stearyl alcohol, polyoxyl 40 stearate, carbomer 934P, edetate disodium, sodium hydroxide, with methylparaben and propylparaben as preservatives.

Chemically, clocortolone pivalate is 9-chloro-6 $\alpha$ -fluoro-11 $\beta$ , 21-dihydroxy-16 $\alpha$  methylpregna-1, 4-diene-3, 20-dione 21-pivalate. Its structure is as follows:



**CLINICAL PHARMACOLOGY**

Topical corticosteroids share anti-inflammatory, antipruritic and vasoconstrictive actions.

The mechanism of anti-inflammatory activity of the topical corticosteroids is unclear. Various laboratory methods, including vasoconstrictor assays, are used to compare and predict potencies and/or clinical efficacies of the topical corticosteroids. There is some evidence to suggest that a recognizable correlation exists between vasoconstrictor potency and therapeutic efficacy in man.

**Pharmacokinetics**

The extent of percutaneous absorption of topical corticosteroids is determined by many factors including the vehicle, the integrity of the epidermal barrier, and the use of occlusive dressings.

Topical corticosteroids can be absorbed from normal intact skin. Inflammation and/or other disease processes in the skin increase percutaneous absorption. Occlusive dressings substantially increase the percutaneous absorption of topical corticosteroids. Thus, occlusive dressings may be a valuable therapeutic adjunct for treatment of resistant dermatoses.

(See **DOSAGE AND ADMINISTRATION**).

Once absorbed through the skin, topical corticosteroids are handled through pharmacokinetic pathways similar to systemically administered corticosteroids. Corticosteroids are bound to plasma proteins in varying degrees. Corticosteroids are metabolized primarily in the liver and are then excreted by the

kidneys. Some of the topical corticosteroids and their metabolites are also excreted into the bile.

## **INDICATIONS AND USAGE**

Topical corticosteroids are indicated for the relief of the inflammatory and pruritic manifestations of corticosteroid-responsive dermatoses.

## **CONTRAINDICATIONS**

Topical corticosteroids are contraindicated in those patients with a history of hypersensitivity to any of the components of the preparation.

## **PRECAUTIONS**

### **General**

Systemic absorption of topical corticosteroids has produced reversible hypothalamic-pituitary-adrenal (HPA) axis suppression, manifestations of Cushing's syndrome, hyperglycemia, and glucosuria in some patients.

Conditions which augment systemic absorption include the application of the more potent steroids, use over large surface areas, prolonged use, and the addition of occlusive dressings.

Therefore, patients receiving a large dose of a potent topical steroid applied to a large surface area or under an occlusive dressing should be evaluated periodically for evidence of HPA axis suppression by using the urinary free cortisol and ACTH stimulation tests. If HPA axis suppression is noted, an attempt should be made to withdraw the drug, to reduce the frequency of application, or to substitute a less potent steroid.

Recovery of HPA axis function is generally prompt and complete upon discontinuation of the drug. Infrequently, signs and symptoms of steroid withdrawal may occur, requiring supplemental systemic corticosteroids.

Children may absorb proportionally larger amounts of topical corticosteroids and thus be more susceptible to systemic toxicity. (See **PRECAUTIONS-Pediatric Use**).

If irritation develops, topical corticosteroids should be discontinued and appropriate therapy instituted.

In the presence of dermatological infections, the use of an appropriate antifungal or antibacterial agent should be instituted. If a favorable response does not occur promptly, the corticosteroid should be discontinued until the infection has been adequately controlled.

### **Information for the Patient**

Patients using topical corticosteroids should receive the following information and instructions:

1. This medication is to be used as directed by the physician. It is for external use only. Avoid contact with the eyes.
2. Patients should be advised not to use this medication for any disorder other than for which it was prescribed.
3. The treated skin area should not be bandaged or otherwise covered or wrapped as to be occlusive unless directed by the physician.
4. Patients should report any signs of local adverse reactions especially under occlusive dressing.
5. Parents of pediatric patients should be advised not to use tight-fitting diapers or plastic pants on a child being treated in the diaper area, as these garments may constitute occlusive dressings.

### **Laboratory Tests**

The following tests may be helpful in evaluating the HPA axis suppression:

Urinary free cortisol test  
ACTH stimulation test

### **Carcinogenesis, Mutagenesis, and Impairment of Fertility**

Long-term animal studies have not been performed to evaluate the carcinogenic potential or the effect on fertility of topical corticosteroids.

Studies to determine mutagenicity with prednisolone and hydrocortisone have revealed negative results.

### **Pregnancy Category C**

Corticosteroids are generally teratogenic in laboratory animals when administered systemically at relatively low dosage levels. The more potent corticosteroids have been shown to be teratogenic after dermal application in laboratory animals. There are no adequate and well-controlled studies in pregnant women on teratogenic effects from topically applied corticosteroids. Therefore, topical corticosteroids should be used during pregnancy only if the potential benefit justifies the potential risk to the fetus. Drugs of this class should not be used extensively on pregnant patients, in large amounts, or for prolonged periods of time.

### **Nursing Mothers**

It is not known whether topical administration of corticosteroids could result in sufficient systemic absorption to produce detectable quantities in breast milk. Systemically administered corticosteroids are secreted into breast milk in quantities not likely to have deleterious effect on the infant. Nevertheless, caution should be exercised when topical corticosteroids are administered to a nursing woman.

### **Pediatric Use**

Pediatric patients may demonstrate greater susceptibility to topical corticosteroid-induced HPA axis suppression and Cushing's syndrome than mature patients because of a larger skin surface area body weight ratio.

Hypothalamic-pituitary-adrenal (HPA) axis suppression, Cushing's syndrome, and intracranial hypertension have been reported in children receiving topical corticosteroids. Manifestations of adrenal suppression in children include linear growth retardation, delayed weight gain, low plasma cortisol levels, and absence of response to ACTH stimulation. Manifestations of intracranial hypertension include bulging fontanelles, headaches, and bilateral papilledema.

Administration of topical corticosteroids to children should be limited to the least amount compatible with an effective therapeutic regimen. Chronic corticosteroid therapy may interfere with the growth and development of children.

## **ADVERSE REACTIONS**

The following local adverse reactions are reported infrequently with topical corticosteroids, but may occur more frequently with the use of occlusive dressings. These reactions are listed in an approximate decreasing order of occurrence:

Burning  
Itching  
Irritation  
Dryness  
Folliculitis  
Hypertrichosis  
Acneiform eruptions

Hypopigmentation  
Perioral dermatitis  
Allergic contact dermatitis  
Maceration of the skin  
Secondary infection  
Skin atrophy  
Striae  
Miliaria

## OVERDOSAGE

Topically applied corticosteroids can be absorbed in sufficient amounts to produce systemic effects (see **PRECAUTIONS**).

## DOSAGE AND ADMINISTRATION

Apply Cloderm (clocortolone pivalate) Cream 0.1% sparingly to the affected areas three times a day and rub in gently.

Occlusive dressings may be used for the management of psoriasis or recalcitrant conditions.

If an infection develops, the use of occlusive dressings should be discontinued and appropriate anti-microbial therapy instituted.

## HOW SUPPLIED

Cloderm (clocortolone pivalate) Cream 0.1% is supplied in 75 gram pump bottles, 45 gram and 90 gram tubes.

75 gram pump bottle	NDC 71403-804-75
45 gram tube	NDC 71403-804-45
90 gram tube	NDC 71403-804-90

## STORAGE

Store Cloderm Cream between 15° and 30° C (59° and 86° F). Avoid freezing.

Cloderm® is a registered trademark of EPI Health, LLC

Manufactured for:  
EPI Health, LLC  
Charleston, SC 29403

**EPIHEALTH**  
*Advancing Dermatology*

REV 1118  
CLO-PI-1118

## PRINCIPAL DISPLAY PANEL - 45 g Tube Label

Cloderm®  
(clocortolone pivalate)

Rx Only  
For Topical Use Only  
Net Wt 45 g

NDC 71403-804-45  
 Cream, 0.1%  
 EPIHEALTH  
 Advancing Dermatology

**Cloderm**<sup>®</sup>  
 (clocortolone pivalate)

Rx Only  
 For Topical Use Only  
 Net Wt 45 g

NDC 71403-804-45

**Cream, 0.1%**

**EPIHEALTH**  
 Advancing Dermatology



80445C  
 Rev 1118



**FOR TOPICAL USE ONLY**

**WARNING: KEEP OUT OF REACH OF CHILDREN**

USUAL DOSAGE: See package insert for complete prescribing information.  
 EACH GRAM CONTAINS: 1.0 mg clocortolone pivalate, in a specially formulated water-washable emollient cream base consisting of purified water, white petrolatum, mineral oil, stearyl alcohol, polyoxyl 40 stearate, carbomer 934P, edetate disodium, sodium hydroxide, with methylparaben and propylparaben as preservatives.

Store between 15° - 30°C (59° - 86°F). Avoid freezing.

See end flap for lot no. and expiration date.

IMPORTANT: Do not use if seal has been punctured or is not visible.

TO OPEN: To puncture the seal, reverse the cap and place the puncture-top on to the tube. Push down firmly until seal is open.

Manufactured for:  
 EPI Health, LLC  
 Charleston, SC 29403

Cloderm<sup>®</sup> is a trademark of  
 EPI Health, LLC

**CLODERM**

clocortolone pivalate cream

**Product Information**

<b>Product Type</b>	HUMAN PRESCRIPTION DRUG	<b>Item Code (Source)</b>	NDC:71403-804
<b>Route of Administration</b>	TOPICAL		

**Active Ingredient/Active Moiety**

Ingredient Name	Basis of Strength	Strength
clocortolone pivalate (UNII: QBL8IZH14X) (CLOCORTOLONE - UNII:N8ZUB7XE0H)	clocortolone pivalate	1 mg in 1 g

**Inactive Ingredients**

Ingredient Name	Strength
Water (UNII: 059QF0KO0R)	
PETROLATUM (UNII: 4T6H12BN9U)	
Mineral Oil (UNII: T5L8T28FGP)	
STEARYL ALCOHOL (UNII: 2KR89I4H1Y)	
POLYOXYL 40 STEARATE (UNII: 13A4J4NH9I)	
CARBOMER HOMO POLYMER TYPE B (ALLYL PENTAERYTHRITOL CROSSLINKED) (UNII: HHT01ZNK31)	
EDETATE DISODIUM (UNII: 7FLD91C86K)	

Sodium Hydroxide (UNII: 55X04QC32I)

METHYL PARABEN (UNII: A2I8C7HI9T)

PROPYL PARABEN (UNII: Z8IX2SC1OH)

### Packaging

#	Item Code	Package Description	Marketing Start Date	Marketing End Date
1	NDC:71403-804-75	1 in 1 CARTON	10/30/2018	
1		75 g in 1 BOTTLE, PUMP; Type 0: Not a Combination Product		
2	NDC:71403-804-45	1 in 1 CARTON	10/30/2018	
2		45 g in 1 TUBE; Type 0: Not a Combination Product		
3	NDC:71403-804-90	1 in 1 CARTON	10/30/2018	
3		90 g in 1 TUBE; Type 0: Not a Combination Product		
4	NDC:71403-804-23	2 g in 1 TUBE; Type 0: Not a Combination Product	10/30/2018	

### Marketing Information

Marketing Category	Application Number or Monograph Citation	Marketing Start Date	Marketing End Date
NDA	NDA017765	10/30/2018	

**Labeler** - EPI Health, Inc (080638894)

### Establishment

Name	Address	ID/FEI	Business Operations
EPI Health, Inc.		080638894	MANUFACTURE(71403-804)

Revised: 9/2019

EPI Health, Inc