

# ERAXIS- anidulafungin injection, powder, lyophilized, for solution

## Roerig

### HIGHLIGHTS OF PRESCRIBING INFORMATION

These highlights do not include all the information needed to use ERAXIS safely and effectively. See full prescribing information for ERAXIS.

**ERAXIS® (anidulafungin) for injection, for intravenous use**  
**Initial U.S. Approval: 2006**

### RECENT MAJOR CHANGES

Indications and Usage (1)	9/2020
Dosage and Administration (2)	9/2020
Contraindications (4)	9/2020
Warnings and Precautions (5)	9/2020

### INDICATIONS AND USAGE

ERAXIS is an echinocandin antifungal indicated for the treatment of the following infections:

- Candidemia and other forms of *Candida* infections (intra-abdominal abscess and peritonitis) in adults and pediatric patients (1 month of age and older) (1.1)
- Esophageal candidiasis in adults (1.2)

#### Limitations of use

- ERAXIS has not been studied in adult and pediatric patients with endocarditis, osteomyelitis, and meningitis due to *Candida* or in sufficient numbers of neutropenic patients. The dosage of ERAXIS for the treatment of *Candida* dissemination into the CNS and the eye has not been established. (1.3, 5.3, 8.4)
- ERAXIS is associated with high relapse rates in esophageal candidiasis. (1.3, 14.2)

### DOSAGE AND ADMINISTRATION

Adults	Pediatric Patients 1 Month of Age and Older
<b>Candidemia and other forms of <i>Candida</i> infections</b>	
200 mg loading dose on Day 1, followed by 100 mg once daily maintenance dose thereafter for at least 14 days after the last positive culture (2.1)	3 mg/kg (not to exceed 200 mg) loading dose on Day 1, followed by 1.5 mg/kg (not to exceed 100 mg) once daily maintenance dose thereafter for at least 14 days after the last positive culture (2.2)
<b>Esophageal candidiasis</b>	
100 mg loading dose on Day 1, followed by 50 mg once daily maintenance dose thereafter for a minimum of 14 days and for at least 7 days following resolution of symptoms (2.1)	Not Approved

#### Rate of Infusion for Adults and Pediatric Patients

The rate of infusion should not exceed 1.1 mg/minute [equivalent to 1.4 mL/minute or 84 mL/hour when reconstituted and diluted per instructions] (2.3, 2.4)

### DOSAGE FORMS AND STRENGTHS

For injection: 50 mg, and 100 mg as a lyophilized powder in a single-dose vial for reconstitution (3)

### CONTRAINDICATIONS

- Known hypersensitivity to anidulafungin, any component of ERAXIS, or other echinocandins (4, 5.2)
- Known or suspected Hereditary Fructose Intolerance (HFI) (4, 5.4)

### WARNINGS AND PRECAUTIONS

- **Hepatic Effects:** Risk of abnormal liver tests, hepatitis, hepatic failure; monitor hepatic function during therapy. (5.1, 13.2)

- **Hypersensitivity:** Anaphylaxis, including shock has been reported. Risk of infusion-related adverse reactions, possibly histamine-mediated, including rash, urticaria, flushing, pruritus, bronchospasm, dyspnea, and hypotension; to reduce occurrence, do not exceed a rate of infusion of 1.1 mg/minute. (2.4, 5.2)
- **Risk of Neonatal Toxicity Associated with Polysorbates:** ERAXIS contains polysorbate 80, an inactive ingredient. Thrombocytopenia, renal dysfunction, hepatomegaly, cholestasis, ascites, hypotension and metabolic acidosis have been reported in low-birth weight infants receiving high doses of polysorbate. ERAXIS is not approved in pediatric patients younger than 1 month of age. (5.3, 8.4)
- **Hereditary Fructose Intolerance (HFI):** ERAXIS contains fructose. Risk of metabolic crisis with life-threatening hypoglycemia, hypophosphatemia, lactic acidosis, and hepatic failure. Obtain history of HFI symptoms in pediatric patients before ERAXIS administration. (5.4, 8.4)

---

## ADVERSE REACTIONS

---

### Adults

- **Candidemia and other forms of *Candida* infections:** Most common adverse reactions ( $\geq 15\%$ ) are hypokalemia, nausea, diarrhea, vomiting, pyrexia, insomnia, hypotension. (6.1)
- **Esophageal candidiasis:** Most common adverse reactions ( $\geq 5\%$ ) are diarrhea, pyrexia, anemia, headache, vomiting, nausea, dyspepsia, oral candidiasis, and hypokalemia. (6.1)

### Pediatric Patients (1 month and older)

Candidemia and other forms of *Candida* infections: Most common adverse reactions ( $\geq 5\%$ ): diarrhea, vomiting, pyrexia, abdominal pain, anemia, thrombocytopenia, alanine aminotransferase (ALT) and aspartate aminotransferase (AST) increased, hypoglycemia, epistaxis, and rash. (6.1)

**To report SUSPECTED ADVERSE REACTIONS, contact Pfizer Inc at 1-800-438-1985 or FDA at 1-800-FDA-1088 or [www.fda.gov/medwatch](http://www.fda.gov/medwatch).**

---

## USE IN SPECIFIC POPULATIONS

---

- **Pregnancy:** Based on findings from animal studies, ERAXIS can cause fetal harm when administered to a pregnant woman. Inform pregnant woman of the risk to the fetus. (8.1)
- **Pediatric Use:** The safety and effectiveness in patients younger than 1 month of age has not been established. (8.4)

**See 17 for PATIENT COUNSELING INFORMATION.**

**Revised: 9/2020**

## FULL PRESCRIBING INFORMATION: CONTENTS\*

### 1 INDICATIONS AND USAGE

- 1.1 Candidemia and Other Forms of *Candida* Infections (Intra-abdominal Abscess and Peritonitis)
- 1.2 Esophageal Candidiasis
- 1.3 Limitations of Use
- 1.4 Usage

### 2 DOSAGE AND ADMINISTRATION

- 2.1 Recommended Dosage in Adults
- 2.2 Recommended Dosage in Pediatric Patients (1 Month of Age and Older)
- 2.3 Preparation for Administration
- 2.4 Dilution and Administration of the Infusion

### 3 DOSAGE FORMS AND STRENGTHS

### 4 CONTRAINDICATIONS

### 5 WARNINGS AND PRECAUTIONS

- 5.1 Hepatic Adverse Reactions
- 5.2 Anaphylactic and Hypersensitivity Reactions
- 5.3 Risk of Neonatal Toxicity Associated with Polysorbates

5.4 Risk in Patients with Hereditary Fructose Intolerance (HFI)

## **6 ADVERSE REACTIONS**

6.1 Clinical Trials Experience

6.2 Post-marketing Experience

## **7 DRUG INTERACTIONS**

7.1 Cyclosporine

7.2 Voriconazole

7.3 Tacrolimus

7.4 Rifampin

7.5 Amphotericin B Liposome for Injection

## **8 USE IN SPECIFIC POPULATIONS**

8.1 Pregnancy

8.2 Lactation

8.4 Pediatric Use

8.5 Geriatric Use

8.6 Hepatic Insufficiency

8.7 Renal Insufficiency

## **10 OVERDOSAGE**

## **11 DESCRIPTION**

## **12 CLINICAL PHARMACOLOGY**

12.1 Mechanism of Action

12.3 Pharmacokinetics

12.4 Microbiology

## **13 NONCLINICAL TOXICOLOGY**

13.1 Carcinogenesis, Mutagenesis, Impairment of Fertility

13.2 Animal Toxicology and/or Pharmacology

## **14 CLINICAL STUDIES**

14.1 Candidemia and Other *Candida* Infections (Intra-abdominal Abscess and Peritonitis)

14.2 Esophageal Candidiasis

## **16 HOW SUPPLIED/STORAGE AND HANDLING**

16.1 How Supplied

16.2 Storage

## **17 PATIENT COUNSELING INFORMATION**

\* Sections or subsections omitted from the full prescribing information are not listed.

---

## **FULL PRESCRIBING INFORMATION**

### **1 INDICATIONS AND USAGE**

#### **1.1 Candidemia and Other Forms of *Candida* Infections (Intra-abdominal Abscess and Peritonitis)**

ERAXIS is indicated for the treatment of candidemia and the following *Candida* infections: intra-abdominal abscess and peritonitis in adults and pediatric patients 1 month of age and older [see *Clinical Studies* (14.1) and *Microbiology* (12.4)].

## 1.2 Esophageal Candidiasis

ERAXIS is indicated for the treatment of esophageal candidiasis in adults [see *Indications and Usage (1.3)*, *Clinical Studies (14.2)*].

## 1.3 Limitations of Use

- ERAXIS has not been studied in adult and pediatric patients with endocarditis, osteomyelitis, and meningitis due to *Candida*, and has not been studied in sufficient numbers of neutropenic patients to determine efficacy in this group. The dosage of ERAXIS for the treatment of *Candida* dissemination into the CNS and the eye has not been established [see *Warning and Precautions (5.3)*, *Use in Specific Populations (8.4)*].
- ERAXIS is associated with high relapse rates in esophageal candidiasis [see *Clinical Studies (14.2)*].

## 1.4 Usage

Specimens for fungal culture and other relevant laboratory studies (including histopathology) should be obtained prior to therapy to isolate and identify causative organism(s). Therapy may be instituted before the results of the cultures and other laboratory studies are known. However, once these results become available, antifungal therapy should be adjusted accordingly.

## 2 DOSAGE AND ADMINISTRATION

### 2.1 Recommended Dosage in Adults

Candidemia and other *Candida* infections (intra-abdominal abscess and peritonitis)

The recommended dose is a single 200 mg loading dose of ERAXIS on Day 1, followed by a 100 mg once daily maintenance dose thereafter. Duration of treatment should be based on the patient's clinical response. In general, antifungal therapy should continue for at least 14 days after the last positive culture.

Esophageal Candidiasis

The recommended dose is a single 100 mg loading dose of ERAXIS on Day 1, followed by a 50 mg once daily maintenance dose thereafter. Patients should be treated for a minimum of 14 days and for at least 7 days following resolution of symptoms. Duration of treatment should be based on the patient's clinical response. Because of the risk of relapse of esophageal candidiasis in patients with HIV infection, suppressive antifungal therapy may be considered after a course of treatment.

### 2.2 Recommended Dosage in Pediatric Patients (1 Month of Age and Older)

Candidemia and other *Candida* infections (intra-abdominal abscess and peritonitis)

The recommended dose is a single loading dose of 3 mg/kg (not to exceed 200 mg) of ERAXIS on Day 1, followed by a once daily maintenance dose of 1.5 mg/kg (not to exceed 100 mg) of ERAXIS thereafter. Overall antifungal treatment should continue for at least 14 days after the last positive culture.

## 2.3 Preparation for Administration

ERAXIS for Injection must be reconstituted with sterile Water for Injection and subsequently diluted only with 5% Dextrose Injection, USP or 0.9% Sodium Chloride Injection, USP (normal saline), prior to administration.

The compatibility of reconstituted ERAXIS with intravenous substances, additives, or medications other than 5% Dextrose Injection, USP or 0.9% Sodium Chloride Injection, USP (normal saline) has not been established. Do **NOT** dilute with other solutions or co-infuse with other medications or electrolytes. The infusion solution must not be frozen.

### Reconstitution of the 50 mg/vial

Aseptically reconstitute each 50 mg vial with 15 mL of sterile Water for Injection to provide a concentration of 3.33 mg/mL.

### Reconstitution of the 100 mg/vial

Aseptically reconstitute each 100 mg vial with 30 mL of sterile Water for Injection to provide a concentration of 3.33 mg/mL.

### Storage of the Reconstituted Solution

ERAXIS reconstituted solution can be stored at 25°C (77°F) for up to 24 hours prior to dilution into the infusion solution. Chemical and physical in-use stability of the reconstituted solution has been demonstrated for 24 hours at 25°C (77°F). From a microbiological point of view, following good aseptic practices, the reconstituted solution can be utilized for up to 24 hours when stored at 25°C.

## 2.4 Dilution and Administration of the Infusion

Parenteral drug products should be inspected visually for particulate matter and discoloration prior to administration, whenever solution and container permit. If particulate matter or discoloration is identified, discard the solution.

### Adult Patients

Aseptically transfer the contents of the reconstituted vial(s) into the appropriately sized IV bag (or bottle) containing either 5% Dextrose Injection, USP or 0.9% Sodium Chloride Injection, USP (normal saline). See Table 1 for the dilution to a concentration of 0.77 mg/mL for the final infusion solution and infusion instructions for each dose. **The rate of infusion should not exceed 1.1 mg/minute (equivalent to 1.4 mL/minute or 84 mL/hour when reconstituted and diluted per instructions) [see Warnings and Precautions (5.2)].**

**Table 1: Dilution Requirements for ERAXIS Administration**

Dose	Number of Vials Required	Total Reconstituted Volume Required	Infusion Volume*	Total Infusion Volume†	Rate of Infusion	Minimum Duration of Infusion
50 mg	1-50 mg	15 mL	50 mL	65 mL	1.4 mL/min or 84 mL/hour	45 min

100 mg	2-50 mg or 1-100 mg	30 mL	100 mL	130 mL	1.4 mL/min or 84 mL/ hour	90 min
200 mg	4-50 mg or 2-100 mg	60 mL	200 mL	260 mL	1.4 mL/min or 84 mL/ hour	180 min

\* Either 5% Dextrose Injection, USP or 0.9% Sodium Chloride Injection, USP (normal saline)

† Infusion solution concentration is 0.77 mg/mL

### Pediatric Patients

The volume of infusion solution required to deliver the dose is dependent on the weight of the child. The reconstituted solution must be further diluted to a concentration of 0.77 mg/mL for the final infusion solution. A programmable syringe or infusion pump is recommended. **The rate of infusion should not exceed 1.1 mg/minute (equivalent to 1.4 mL/minute or 84 mL/hour when reconstituted and diluted per instructions) [see Warnings and Precautions (5.2)].**

#### *Steps for the Preparation of Pediatric Doses below 50 mg*

1. Calculate pediatric patient dose and aseptically reconstitute vial(s) required according to reconstitution instructions to provide a concentration of 3.33 mg/mL (if dose is 50 mg or above, see preparation instructions for Adult Patients above) [see Dosage and Administration (2.2, 2.3)].
2. Calculate the volume (mL) of reconstituted ERAXIS required:  
**Volume of reconstituted ERAXIS (mL) = Dose of ERAXIS (mg) ÷ 3.33 mg/mL**
3. Calculate the total volume of the infusion solution (mL) that contains a final concentration of 0.77 mg/mL:  
**Total volume of infusion solution (mL) = Dose of ERAXIS (mg) ÷ 0.77 mg/mL**
4. Calculate the volume of diluent [5% Dextrose Injection, USP or 0.9% Sodium Chloride Injection, USP (normal saline)] required to prepare the infusion solution: **Volume of diluent (mL) = Total volume of final infusion solution (mL) - Volume of reconstituted ERAXIS (mL)**
5. Prepare the infusion solution by aseptically transferring the required volumes (mL) of the reconstituted ERAXIS and diluent [5% Dextrose Injection, USP or 0.9% Sodium Chloride Injection, USP (normal saline)] into an infusion syringe or IV infusion bag needed for administration.

### Storage of the Infusion Solution

ERAXIS infusion solution can be stored at temperatures up to 25°C (77°F) for up to 48 hours. Do not freeze. Chemical and physical in-use stability of the infusion solution has been demonstrated for 48 hours at 25°C (77°F). From a microbiological point of view, following good aseptic practices, the infusion solution can be utilized for up to 48 hours from preparation when stored at 25°C.

### **3 DOSAGE FORMS AND STRENGTHS**

For injection: 50 mg, and 100 mg of anidulafungin as a white to off-white sterile lyophilized powder in a single-dose vial for reconstitution.

### **4 CONTRAINDICATIONS**

ERAXIS is contraindicated in:

- Patients with known hypersensitivity to anidulafungin, any component of ERAXIS, or other echinocandins [see *Warnings and Precautions (5.2)*]
- Patients with known or suspected Hereditary Fructose Intolerance (HFI) [see *Warnings and Precautions (5.4)*]

### **5 WARNINGS AND PRECAUTIONS**

#### **5.1 Hepatic Adverse Reactions**

Laboratory abnormalities in liver tests have been seen in healthy volunteers and pediatric patients treated with ERAXIS. In some patients with serious underlying medical conditions who were receiving multiple concomitant medications along with ERAXIS, clinically significant hepatic abnormalities have occurred. Isolated cases of significant hepatic dysfunction, hepatitis, or hepatic failure have been reported in patients; a causal relationship to ERAXIS has not been established [see *Adverse Reactions (6.1)* and *Nonclinical Toxicology (13.2)*]. Patients who develop abnormal liver tests during ERAXIS therapy should be monitored for evidence of worsening hepatic tests and evaluated for risk/benefit of continuing ERAXIS therapy.

#### **5.2 Anaphylactic and Hypersensitivity Reactions**

Anaphylactic reactions, including shock were reported with the use of ERAXIS. If these reactions occur, ERAXIS should be discontinued and appropriate treatment administered [see *Adverse Reactions (6)*].

Infusion-related adverse reactions, possibly histamine-mediated, have been reported with ERAXIS, including rash, urticaria, flushing, pruritus, bronchospasm, dyspnea, and hypotension [see *Adverse Reactions (6)*]. To reduce occurrence of these reactions, do not exceed a rate of ERAXIS infusion of 1.1 mg/minute [see *Dosage and Administration (2.4)*].

#### **5.3 Risk of Neonatal Toxicity Associated with Polysorbates**

ERAXIS contains polysorbate 80, an inactive ingredient. Thrombocytopenia, renal dysfunction, hepatomegaly, cholestasis, ascites, hypotension, and metabolic acidosis have been reported in low-birth weight infants receiving high doses of polysorbate. Polysorbate toxicity has not been reported with ERAXIS. ERAXIS is not approved in pediatric patients younger than 1 month of age [see *Indications and Usage (1.1, 1.3)*, *Use in Specific Populations (8.4)*].

#### **5.4 Risk in Patients with Hereditary Fructose Intolerance (HFI)**

ERAXIS contains fructose, an inactive ingredient, and may precipitate a metabolic crisis

that may include, but is not limited to life-threatening hypoglycemia, hypophosphatemia, lactic acidosis, and hepatic failure in patients with HFI. Obtain careful history of HFI symptoms (nausea, vomiting, abdominal pain) with fructose/sucrose exposure prior to ERAXIS administration because a diagnosis of HFI may not yet be established in pediatric patients [see *Contraindications (4) and Use in Specific Populations (8.4)*].

## 6 ADVERSE REACTIONS

The following most *serious adverse reactions* are described elsewhere in other labeling sections:

- Hepatic Adverse Reactions [see *Warnings and Precautions (5.1)*]
- Anaphylactic and Hypersensitivity Reactions [see *Warnings and Precautions (5.2)*]

### 6.1 Clinical Trials Experience

Because clinical trials are conducted under widely varying conditions, adverse reaction rates observed in the clinical trials of a drug cannot be directly compared to rates in the clinical trials of another drug and may not reflect the rates observed in practice.

#### Clinical Trials Experience in Adults

The safety of ERAXIS for Injection was assessed in 929 individuals, including 257 healthy subjects and 672 patients in clinical trials of candidemia, other forms of *Candida* infections, and esophageal candidiasis. A total of 633 patients received ERAXIS at daily doses of either 50 mg or 100 mg. A total of 481 patients received ERAXIS for  $\geq 14$  days.

#### *Candidemia/other Candida Infections*

Three trials (one comparative vs. fluconazole, two non-comparative) assessed the efficacy and safety of ERAXIS (100 mg) in patients with candidemia and other *Candida* infections.

The data described below reflect exposure to ERAXIS and fluconazole in 127 and 118 patients, respectively, with candidemia and other forms of invasive candidiasis, in the randomized, comparative trial of the efficacy and safety of ERAXIS to that of fluconazole. In ERAXIS-treated patients, the age range was 16–89 years, the gender distribution was 51% male and 49% female, and the race distribution was 72% White, 18% Black/African American, 9% other races. Patients were randomized to receive once daily IV ERAXIS (200 mg loading dose followed by 100 mg maintenance dose) or IV fluconazole (800 mg loading dose followed by 400 mg maintenance dose). Treatment was administered for at least 14 and not more than 42 days.

The number of patients with adverse reactions leading to discontinuation of study medication was 11.5% in the ERAXIS arm and 21.6% in the fluconazole arm. The most common adverse reactions leading to study drug discontinuation were multi-organ failure (2.3%) and systemic *Candida* infection (1.5%) in the ERAXIS arm.

Table 2 presents adverse reactions that were reported in  $\geq 5\%$  of subjects receiving ERAXIS or fluconazole therapy in this trial.

**Table 2: Adverse Reactions Reported in  $\geq 5\%$  of Adult Patients Receiving ERAXIS or Fluconazole Therapy for Candidemia/other *Candida* Infections<sup>\*, †</sup>**



<b>Adverse Reaction</b>	<b>ERAXIS 100 mg N=131</b>	<b>Fluconazole 400 mg N=125</b>
	<b>N (%)</b>	<b>N (%)</b>
<b>Subjects with a least one adverse reaction</b>	<b>130 (99)</b>	<b>122 (98)</b>
<b>Gastrointestinal disorders</b>	<b>81 (62)</b>	<b>72 (58)</b>
Nausea	32 (24)	15 (12)
Diarrhea	24 (18)	23 (18)
Vomiting	23 (18)	12 (10)
Constipation	11 (8)	14 (11)
Abdominal pain	8 (6)	16 (13)
<b>General disorders and administration site conditions</b>	<b>70 (53)</b>	<b>76 (61)</b>
Pyrexia	23 (18)	23 (18)
Edema peripheral	14 (11)	16 (13)
Chest pain	7 (5)	6 (5)
<b>Respiratory, thoracic, and mediastinal disorders</b>	<b>67 (51)</b>	<b>55 (44)</b>
Dyspnea	15 (12)	4 (3)
Pleural effusion	13 (10)	11 (9)
Cough	9 (7)	7 (6)
Respiratory distress	8 (6)	2 (2)
<b>Investigations</b>	<b>66 (50)</b>	<b>46 (37)</b>
Blood alkaline phosphatase increased	15 (12)	14 (11)
White blood cell increased	11 (8)	3 (2)
Hepatic enzyme increased	7 (5)	14 (11)
Blood creatinine increased	7 (5)	1 (1)
<b>Metabolism and nutrition disorders</b>	<b>61 (47)</b>	<b>61 (49)</b>
Hypokalemia	33 (25)	24 (19)
Hypomagnesemia	15 (12)	14 (11)
Hypoglycemia	9 (7)	10 (8)
Hyperkalemia	8 (6)	14 (11)
Hyperglycemia	8 (6)	8 (6)
Dehydration	8 (6)	2 (2)
<b>Vascular disorders</b>	<b>50 (38)</b>	<b>41 (33)</b>
Hypotension	19 (15)	18 (14)
Hypertension	15 (12)	5 (4)
Deep vein thrombosis	13 (10)	9 (7)
<b>Psychiatric disorders</b>	<b>48 (37)</b>	<b>45 (36)</b>
Insomnia	20 (15)	12 (10)
Confusional state	10 (8)	10 (8)

Depression	8 (6)	5 (4)
<b>Blood and lymphatic system disorders</b>	<b>34 (26)</b>	<b>36 (29)</b>
Anemia	12 (9)	20 (16)
Thrombocythemia	8 (6)	1 (1)
Leukocytosis	7 (5)	6 (5)
<b>Skin and subcutaneous tissue disorders</b>	<b>30 (23)</b>	<b>32 (26)</b>
Decubitus ulcer	7 (5)	10 (8)
<b>Nervous system disorders</b>	<b>27 (21)</b>	<b>31 (25)</b>
Headache	11 (8)	10 (8)
<b>Musculoskeletal and connective tissue disorders</b>	<b>27 (21)</b>	<b>25 (20)</b>
Back pain	7 (5)	13 (10)

\* A patient who experienced multiple reactions within a Body System or preferred term was counted one time for that class, one time for the preferred term and one time for "subjects with at least one adverse reaction".

† This trial was not designed to support comparative claims for ERAXIS for the adverse reactions reported in this table.

### *Esophageal Candidiasis*

The data described below reflect exposure to ERAXIS and fluconazole in 300 and 301 patients, respectively, with esophageal candidiasis in a randomized trial comparing the efficacy and safety of ERAXIS to that of oral fluconazole. In ERAXIS-treated patients, the age range was 18–68 years, the gender distribution was 42% male and 58% female and the race distribution was 15% White, 49% Black/African American, 15% Asian, 0.3 % Hispanic, 21% other races. Patients were randomized to receive IV ERAXIS (100 mg on day 1, followed by 50 mg per day) or oral fluconazole (200 mg on day 1, followed by 100 mg per day) for 7 days beyond resolution of symptoms (range, 14–21 days).

Twenty-eight (9%) patients in the ERAXIS arm and 36 (12%) patients in the fluconazole arm had adverse reactions related to study medication. The most common adverse reactions leading to study discontinuation were maculopapular rash (1 patient) for the ERAXIS arm. The most common adverse reactions leading to discontinuation were rash (1 patient) and increased AST (1 patient) for the fluconazole arm.

Table 3 presents adverse reactions that were reported in  $\geq 5\%$  of subjects receiving ERAXIS therapy.

**Table 3: Adverse Reactions Reported in  $\geq 5\%$  of Adult Patients Receiving ERAXIS or Fluconazole Therapy for Esophageal Candidiasis<sup>\*, †</sup>**

<b>Adverse Reaction</b>	<b>ERAXIS 50 mg N=300</b>	<b>Fluconazole 100 mg N=301</b>
	<b>N (%)</b>	<b>N (%)</b>
<b>Subjects with a least one adverse reaction</b>	<b>239 (80)</b>	<b>227 (75)</b>

<b>Infections and infestations</b>	<b>115 (38)</b>	<b>99 (33)</b>
Oral candidiasis	15 (5)	10 (3)
<b>Gastrointestinal disorders</b>	<b>106 (35)</b>	<b>113 (38)</b>
Diarrhea	27 (9)	26 (9)
Vomiting	27 (7)	30 (10)
Nausea	20 (7)	23 (8)
Dyspepsia	20 (7)	21 (7)
<b>Blood and lymphatic system disorders</b>	<b>55 (18)</b>	<b>50 (17)</b>
Anemia	25 (8)	22 (7)
<b>Metabolism and nutrition disorders</b>	<b>50 (17)</b>	<b>46 (15)</b>
Hypokalemia	14 (5)	17 (6)
<b>General disorders and administration site condition</b>	<b>49 (16)</b>	<b>54 (18)</b>
Pyrexia	27 (9)	28 (9)
<b>Nervous system disorders</b>	<b>39 (13)</b>	<b>36 (12)</b>
Headache	25 (8)	20 (7)

\* A patient who experienced multiple reactions within a Body System or preferred term was counted one time for that class, one time for the preferred term and one time for "subjects with at least one adverse reaction".

† This trial was not designed to support comparative claims for ERAXIS for the adverse reactions reported in this table.

### *Less Common Adverse Reactions in Adult Patients with Candidemia/other Candida Infections and Esophageal Candidiasis*

The following selected adverse reactions occurred in <2% of patients:

*Blood and Lymphatic:* coagulopathy, thrombocytopenia

*Cardiac:* atrial fibrillation, bundle branch block (right), sinus arrhythmia, ventricular extrasystoles

*Eye:* eye pain, vision blurred, visual disturbance

*General and Administration Site:* infusion related reaction, peripheral edema, rigors

*Hepatobiliary:* abnormal liver function tests, cholestasis, hepatic necrosis

*Infections:* clostridial infection

*Investigations:* amylase increased, bilirubin increased, CPK increased, electrocardiogram QT prolonged, gamma-glutamyl transferase increased, lipase increased, potassium decreased, prothrombin time prolonged, urea increased

*Nervous System:* convulsion, dizziness

*Respiratory, Thoracic and Mediastinal:* cough

*Skin and Subcutaneous Tissue:* angioneurotic edema, erythema, pruritus, sweating increased, urticaria

*Vascular*: flushing, hot flushes, thrombophlebitis superficial

### Clinical Trials Experience in Pediatric Patients with Candidemia/Invasive Candidiasis

The safety of ERAXIS was investigated in 68 pediatric patients from 1 month to less than 18 years of age with candidemia/invasive candidiasis in a prospective, open-label, non-comparative pediatric trial [see *Clinical Studies (14.1)*]. Overall, the safety profile of ERAXIS in the pediatric patients 1 month and older was similar to that of adults.

#### *Most Common Adverse Reactions*

The most common adverse reactions occurring in  $\geq 5\%$  of pediatric patients receiving ERAXIS therapy in the clinical trial are displayed by body system in Table 4.

**Table 4 Adverse Reactions Occurring in  $\geq 5\%$  of Pediatric Patients Receiving ERAXIS Therapy for Candidemia/other Candida Infections\*,†**

<b>Adverse Reaction</b>	<b>1 month to &lt;2 years N=19</b>	<b>2 to &lt;5 years N=19</b>	<b>5 to &lt;18 years N=30</b>	<b>Overall N=68</b>
	<b>n (%)</b>	<b>n (%)</b>	<b>n (%)</b>	<b>n (%)</b>
<b>Subjects with a least one adverse reaction</b>	<b>17 (90)</b>	<b>14 (74)</b>	<b>24 (80)</b>	<b>55 (81)</b>
<b>Blood and lymphatic system disorders</b>	<b>9 (47)</b>	<b>3 (16)</b>	<b>4 (13)</b>	<b>16 (24)</b>
Anemia	5 (26)	2 (11)	0	7 (10)
Thrombocytopenia	2 (11)	1 (5)	1 (3)	4 (6)
<b>Gastrointestinal disorders</b>	<b>8 (42)</b>	<b>8 (42)</b>	<b>12 (40)</b>	<b>28 (41)</b>
Diarrhea	4 (21)	2 (11)	5 (17)	11 (16)
Vomiting	4 (21)	5 (26)	2 (7)	11 (16)
Abdominal pain <sup>‡</sup>	0	4 (21)	2 (7)	6 (9)
<b>General disorders and administration site condition</b>	<b>5 (26)</b>	<b>6 (32)</b>	<b>9 (30)</b>	<b>20 (29)</b>
Pyrexia	4 (21)	3 (16)	5 (17)	12 (18)
<b>Laboratory Investigations</b>	<b>4 (21)</b>	<b>4 (21)</b>	<b>8 (27)</b>	<b>16 (24)</b>
Alanine aminotransferase increased	2 (11)	2 (11)	2 (7)	6 (9)
Aspartate aminotransferase increased	2 (11)	1 (5)	1 (3)	4 (6)
<b>Metabolism and nutrition disorders</b>	<b>3 (16)</b>	<b>4 (21)</b>	<b>6 (20)</b>	<b>13 (19)</b>
Hypoglycemia	1 (5)	2 (11)	1 (3)	4 (6)

<b>Respiratory, thoracic and mediastinal disorders</b>	<b>5 (26)</b>	<b>5 (26)</b>	<b>5 (17)</b>	<b>15 (22)</b>
Epistaxis	1 (5)	2 (11)	3 (10)	6 (9)
<b>Skin and subcutaneous tissue disorders</b>	<b>6 (32)</b>	<b>5 (26)</b>	<b>5 (17)</b>	<b>16 (24)</b>
Rash <sup>§</sup>	3 (16)	1 (5)	2 (7)	6 (9)

\* Reflects adverse reactions including those that started on or after first dose of anidulafungin through 6-week follow-up for patients who did not receive oral fluconazole, and those that started between first dose and last dose of anidulafungin for patients who received oral fluconazole.

† A patient who experienced multiple reactions within a Body System or preferred term was counted one time for that class, one time for the preferred term and one time for "subjects with at least one adverse reaction".

‡ Includes such terms as: abdominal pain and abdominal pain upper.

§ Includes such terms as: rash and rash generalized.

Other adverse reactions were reported in 2 or more pediatric patients and in less than 5% of the 68 pediatric patients treated with ERAXIS in the clinical trial:

*Blood and Lymphatic System Disorders:* pancytopenia, thrombocytosis, febrile neutropenia, leukopenia, neutropenia

*Eye Disorders:* Periorbital edema

*Gastrointestinal Disorders:* gastroesophageal reflux disease, abdominal distension, nausea, stomatitis, dry mouth

*General Disorders and Administrative Site Conditions:* chest pain, edema peripheral

*Infections and Infestations:* bacteremia, device related infection, gastroenteritis, lower respiratory tract infection, upper respiratory tract infection, urinary tract infection

*Laboratory Investigations:* gamma-glutamyltransferase increased, transaminases increased

*Metabolism and Nutrition Disorders:* hypocalcemia, hypokalemia, hyponatremia, hypoproteinemia

*Musculoskeletal and Connective Tissue Disorders:* back pain, pain in extremity

*Nervous System Disorders:* headache, tremor, seizure

*Psychiatric Disorders:* agitation

*Respiratory, Thoracic and Mediastinal Disorders:* hemoptysis

*Vascular Disorders:* hypotension

## 6.2 Post-marketing Experience

The following adverse reactions have been identified during post approval use of anidulafungin. Because these reactions are reported voluntarily from a population of uncertain size, it is not always possible to reliably estimate their frequency or establish a causal relationship to drug exposure.

*Immune:* Anaphylactic shock, anaphylactic reaction, bronchospasm [see Warnings and

*Precautions (5.2)]*.

## **7 DRUG INTERACTIONS**

### **7.1 Cyclosporine**

Administration of multiple doses of anidulafungin and cyclosporine to healthy subjects resulted in no significant alteration in the steady state pharmacokinetics of either drug. No dosage adjustment of cyclosporine or anidulafungin is needed when the two drugs are co-administered [*see Clinical Pharmacology (12.3)]*.

### **7.2 Voriconazole**

Administration of multiple doses of anidulafungin and voriconazole to healthy subjects resulted in no significant alteration in the steady state pharmacokinetics of either drug. No dosage adjustment of voriconazole or anidulafungin is needed when the two drugs are co-administered [*see Clinical Pharmacology (12.3)]*.

### **7.3 Tacrolimus**

Administration of multiple doses of anidulafungin and a single-dose of tacrolimus to healthy subjects resulted in no significant alteration in the steady state pharmacokinetics of either drug. No dosage adjustment of tacrolimus or anidulafungin is needed when the two drugs are co-administered [*see Clinical Pharmacology (12.3)]*.

### **7.4 Rifampin**

Administration of multiple doses of anidulafungin and rifampin to patients resulted in no significant alteration in the steady state pharmacokinetics of anidulafungin. No dosage adjustment of anidulafungin is needed when it is co-administered with rifampin [*see Clinical Pharmacology (12.3)]*.

### **7.5 Amphotericin B Liposome for Injection**

Administration of multiple doses of anidulafungin and liposomal amphotericin B to patients resulted in no significant alteration in the steady state pharmacokinetics of anidulafungin. No dosage adjustment of anidulafungin is needed when it is co-administered with liposomal amphotericin B [*see Clinical Pharmacology (12.3)]*.

## **8 USE IN SPECIFIC POPULATIONS**

### **8.1 Pregnancy**

#### Risk Summary

Based on findings from animal studies, ERAXIS can cause fetal harm when administered to a pregnant woman. There are no available human data on the use of ERAXIS in pregnant women to inform a drug-associated risk of adverse developmental outcomes. In animal reproduction studies fetal toxicity was observed in the presence of maternal toxicity when anidulafungin was administered to pregnant rabbits during organogenesis at 4 times the proposed therapeutic maintenance dose of 100 mg/day on the basis of relative body surface area (*see Data*). Inform pregnant woman of the risk to the fetus.

The estimated background risk of major birth defects and miscarriage for the indicated populations are unknown. All pregnancies have a background risk of birth defect, loss, or other adverse outcomes. In the U.S. general population, the estimated background risk of major birth defects and miscarriage in clinically recognized pregnancies is 2 to 4% and 15 to 20% respectively.

## Data

### *Animal Data*

In a combined fertility and embryo-fetal development study in rats dosed with anidulafungin for 4 weeks prior to cohabitation and through cohabitation for males or for 2 weeks prior to cohabitation and continuing through gestation day 19 for females, there was no maternal or embryo-fetal toxicity at intravenous doses up to 20 mg/kg/day (equivalent to 2 times the proposed therapeutic maintenance dose of 100 mg/day on the basis of relative body surface area).

In a rabbit embryo-fetal development study, intravenous administration of anidulafungin (0, 5, 10, and 20 mg/kg/day) from gestation day 7 through 19, resulted in reduced fetal weights and incomplete ossification in the presence of maternal toxicity (decreased body weight gain) at 20 mg/kg/day (equivalent to 4 times the proposed therapeutic maintenance dose of 100 mg/day on the basis of relative body surface area).

In a pre- and postnatal development study, pregnant rats were intravenously administered anidulafungin at doses of 2, 6, or 20 mg/kg/day from gestation day 7 through lactation day 20. Maternal toxicity was observed at  $\geq 6$  mg/kg/day (clinical signs at  $\geq 6$  mg/kg/day and reduced body weight gain and food consumption during gestation at 20 mg/kg/day group). There were no effects on the viability or growth and development of the offspring. In this study, anidulafungin was detected in fetal plasma, indicating that it crossed the placental barrier.

## **8.2 Lactation**

### Risk Summary

There are no data on the presence of anidulafungin in human milk, the effects on the breastfed infant or the effects on milk production. When a drug is present in animal milk, it is likely that the drug will be present in human milk. Anidulafungin was found in the milk of lactating rats (see *Data*).

The developmental and health benefits of breastfeeding should be considered along with the mother's clinical need for ERAXIS and any potential adverse effects on the breastfed child from ERAXIS or from the underlying maternal condition.

## Data

### *Animal Data*

Pregnant rats were intravenously administered anidulafungin at doses of 2, 6, or 20 mg/kg/day from gestation day 7 through lactation day 20. Milk samples were collected from 5 rats per group on lactation day 14 at approximately 1 hours post dose. Approximately dose-proportional anidulafungin concentrations were found in the milk of lactating rats.

## **8.4 Pediatric Use**

The safety and effectiveness of ERAXIS for the treatment of candidemia and the following *Candida* infections: intra-abdominal abscess and peritonitis, have been established in pediatric patients 1 month of age and older. Use of ERAXIS for this indication in this age group is supported by evidence from adequate and well-controlled studies in adults with additional pharmacokinetic, safety data in pediatric patients 1 month of age and older [see *Indications and Usage (1)*, *Adverse Reactions (6.1)*, *Clinical Pharmacology (12.3)*, and *Clinical Studies (14.1)*].

The safety and effectiveness of ERAXIS in patients younger than 1 month of age with candidemia/invasive candidiasis has not been established.

Candidemia/invasive candidiasis in pediatric patients younger than 1 month of age has a higher rate of central nervous system (CNS) and multi-organ dissemination than in older patients. In addition, in patients younger than 1 month of age ERAXIS carries a potential risk of life-threatening toxicity associated with high doses of polysorbate 80, an inactive ingredient in ERAXIS [see *Warnings and Precautions (5.3)*].

The safety and effectiveness of ERAXIS in pediatric patients with esophageal candidiasis has not been established.

ERAXIS is contraindicated in adult and pediatric patients with HFI. Because a diagnosis of HFI may not yet be established in pediatric patients, obtain a careful history of HFI symptoms with fructose/sucrose exposure prior to administration of ERAXIS [see *Warnings and Precautions (5.4)*].

## **8.5 Geriatric Use**

Of the total number of subjects (N = 197) in the pivotal clinical studies of anidulafungin, 35% were 65 years and over, while 18% were 75 years and over. No overall differences in safety or effectiveness were observed between these subjects and younger subjects, and other reported clinical experience has not identified differences in responses between the elderly and younger patients, but greater sensitivity of some older individuals cannot be ruled out.

Dosage adjustments are not required for geriatric patients [see *Clinical Pharmacology (12.3)*].

## **8.6 Hepatic Insufficiency**

No dosing adjustments are required for patients with any degree of hepatic insufficiency. Anidulafungin is not hepatically metabolized. Anidulafungin pharmacokinetics were examined in subjects with Child-Pugh class A, B or C hepatic insufficiency. Anidulafungin concentrations were not increased in subjects with any degree of hepatic insufficiency. Though a slight decrease in AUC was observed in patients with Child-Pugh C hepatic insufficiency, it was within the range of population estimates noted for healthy subjects [see *Clinical Pharmacology (12.3)*].

## **8.7 Renal Insufficiency**

Dosage adjustments are not required for patients with any degree of renal insufficiency including those on hemodialysis. Anidulafungin has negligible (<1%) renal clearance. In a clinical study of subjects with mild, moderate, severe or end stage (dialysis-dependent) renal insufficiency, anidulafungin pharmacokinetics were similar to those observed in



subjects with normal renal function. Anidulafungin is not dialyzable and may be administered without regard to the timing of hemodialysis [see *Clinical Pharmacology (12.3)*].

## 10 OVERDOSAGE

During clinical trials a single 400 mg dose of ERAXIS was inadvertently administered as a loading dose. No clinical adverse events were reported. In a study of 10 healthy subjects administered a loading dose of 260 mg followed by 130 mg daily; 3 of the 10 subjects experienced transient, asymptomatic transaminase elevations ( $\leq 3 \times$  ULN) [see *Warnings and Precautions (5.1)*].

Anidulafungin is not dialyzable.

The maximum non-lethal dose of anidulafungin in rats was 50 mg/kg, a dose which is equivalent to 10 times the recommended daily dose for esophageal candidiasis (50 mg/day) or equivalent to 5 times the recommended daily dose for candidemia and other *Candida* infections (100 mg/day), based on relative body surface area comparisons.

## 11 DESCRIPTION

ERAXIS for Injection is a sterile, lyophilized product for intravenous (IV) infusion that contains anidulafungin. ERAXIS (anidulafungin) is a semi-synthetic lipopeptide synthesized from a fermentation product of *Aspergillus nidulans*. Anidulafungin is an echinocandin, a class of antifungal drugs that inhibits the synthesis of 1,3- $\beta$ -D-glucan, an essential component of fungal cell walls.

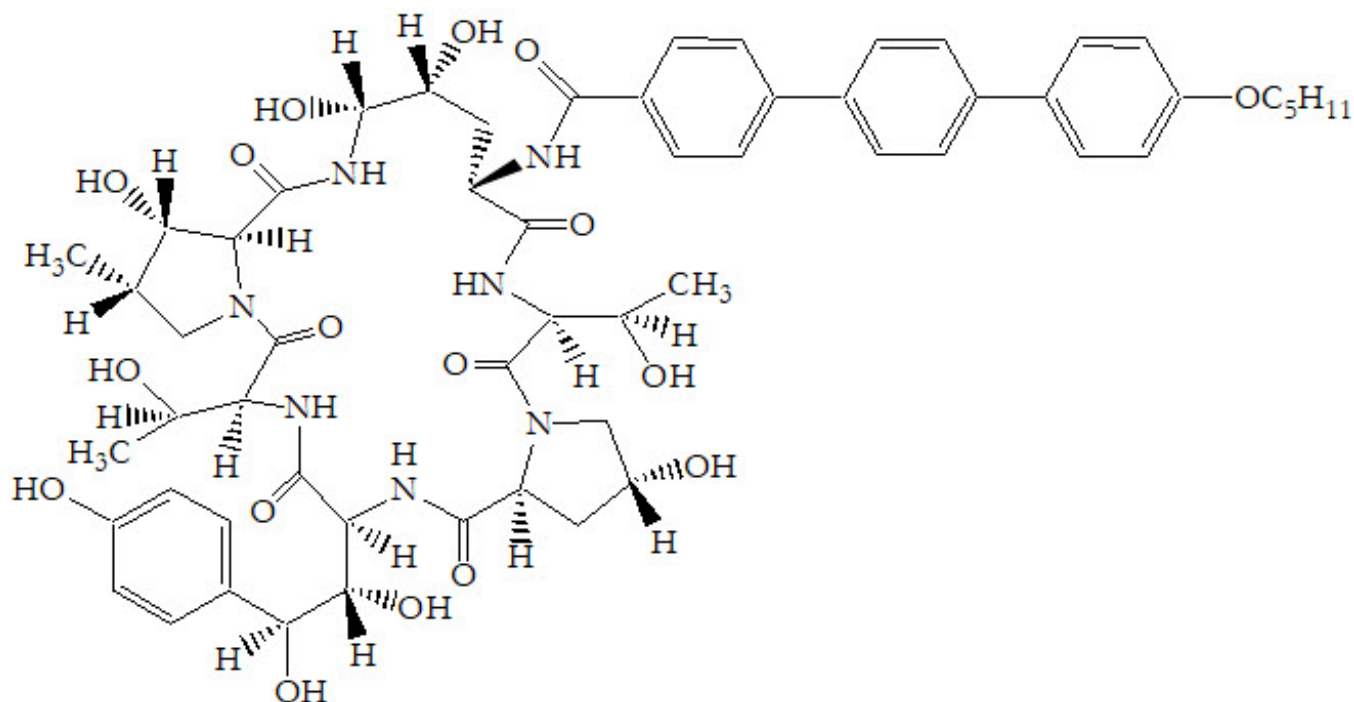
ERAXIS (anidulafungin) is 1-[(4R,5R)-4,5-dihydroxy-N<sub>2</sub>-[[4''-(pentyloxy)[1,1':4',1''-terphenyl]-4-yl]carbonyl]-L-ornithine]echinocandin B. Anidulafungin is a white to off-white powder that is practically insoluble in water and slightly soluble in ethanol. In addition to the active ingredient, anidulafungin, ERAXIS for Injection contains the following inactive ingredients:

*50 mg/vial* – fructose (50 mg), mannitol (250 mg), polysorbate 80 (125 mg), tartaric acid (5.6 mg), and sodium hydroxide and/or hydrochloric acid for pH adjustment.

*100 mg/vial* – fructose (100 mg), mannitol (500 mg), polysorbate 80 (250 mg), tartaric acid (11.2 mg), and sodium hydroxide and/or hydrochloric acid for pH adjustment.

The empirical formula of anidulafungin is C<sub>58</sub>H<sub>73</sub>N<sub>7</sub>O<sub>17</sub> and the formula weight is 1140.3.

The structural formula is:



Prior to administration, ERAXIS for Injection requires reconstitution with sterile Water for Injection and subsequent dilution with either 5% Dextrose Injection, USP or 0.9% Sodium Chloride Injection, USP (normal saline).

## 12 CLINICAL PHARMACOLOGY

### 12.1 Mechanism of Action

Anidulafungin is an anti-fungal drug [see *Microbiology (12.4)*].

### 12.3 Pharmacokinetics

#### General Pharmacokinetic Characteristics

The pharmacokinetics of anidulafungin following intravenous (IV) administration of ERAXIS have been characterized in healthy subjects, special populations and patients. Systemic exposures of anidulafungin are dose-proportional and have low inter-subject variability (coefficient of variation <25%) as shown in Table 5. The steady state was achieved on the first day after a loading dose (twice the daily maintenance dose) and the estimated plasma accumulation factor at steady state is approximately 2.

**Table 5: Mean (%CV) Steady State Pharmacokinetic Parameters of Anidulafungin Following IV Administration of ERAXIS Once Daily for 10 Days in Healthy Adult Subjects**

PK Parameter†	Anidulafungin IV Dosing Regimen (LD/MD, mg)*		
	70/35‡,§ (N=6)	200/100 (N=10)	260/130§,¶ (N=10)
C <sub>max, ss</sub> [mg/L]	3.55 (13.2)	8.6 (16.2)	10.9 (11.7)

AUC <sub>SS</sub> [mg•h/L]	42.3 (14.5)	111.8 (24.9)	168.9 (10.8)
CL [L/h]	0.84 (13.5)	0.94 (24.0)	0.78 (11.3)
t <sub>1/2</sub> [h]	43.2 (17.7)	52.0 (11.7)	50.3 (9.7)

C<sub>max, ss</sub> = the steady state peak concentration

AUC<sub>SS</sub> = the steady state area under concentration vs. time curve

CL = clearance

t<sub>1/2</sub> = the terminal elimination half-life

\* LD/MD: loading dose/maintenance dose once daily

† Parameters were obtained from separate studies

‡ Data were collected on Day 7

§ Safety and efficacy of these doses has not been established

¶ See OVERDOSAGE

The clearance of anidulafungin is about 1 L/h and anidulafungin has a terminal elimination half-life of 40–50 hours.

### Distribution

The pharmacokinetics of anidulafungin following IV administration are characterized by a short distribution half-life (0.5–1 hour) and a volume of distribution of 30–50 L that is similar to total body fluid volume. Anidulafungin is extensively bound (>99%) to human plasma proteins.

### Metabolism

Hepatic metabolism of anidulafungin has not been observed. Anidulafungin is not a clinically relevant substrate, inducer, or inhibitor of cytochrome P450 (CYP450) isoenzymes. It is unlikely that anidulafungin will have clinically relevant effects on the metabolism of drugs metabolized by CYP450 isoenzymes.

Anidulafungin undergoes slow chemical degradation at physiologic temperature and pH to a ring-opened peptide that lacks antifungal activity. The *in vitro* degradation half-life of anidulafungin under physiologic conditions is about 24 hours. *In vivo*, the ring-opened product is subsequently converted to peptidic degradants and eliminated.

### Excretion

In a single-dose clinical study, radiolabeled (<sup>14</sup>C) anidulafungin was administered to healthy subjects. Approximately 30% of the administered radioactive dose was eliminated in the feces over 9 days, of which less than 10% was intact drug. Less than 1% of the administered radioactive dose was excreted in the urine. Anidulafungin concentrations fell below the lower limits of quantitation 6 days post-dose. Negligible amounts of drug-derived radioactivity were recovered in blood, urine, and feces 8 weeks post-dose.

### Specific Populations

#### *Patients with fungal infections*

Population pharmacokinetic analyses from four clinical trials including 107 male and 118 female patients with fungal infections showed that the pharmacokinetic parameters of anidulafungin are not affected by age, race, or the presence of concomitant medications which are known metabolic substrates, inhibitors or inducers.

The pharmacokinetics of anidulafungin in patients with fungal infections are similar to

those observed in healthy subjects. The pharmacokinetic parameters of anidulafungin estimated using population pharmacokinetic modeling following IV administration of a maintenance dose of 50 mg/day or 100 mg/day (following a loading dose) of ERAXIS are presented in Table 6.

**Table 6: Mean (%CV) Steady State Pharmacokinetic Parameters of Anidulafungin Following IV Administration of ERAXIS in Patients with Fungal Infections Estimated Using Population Pharmacokinetic Modeling**

PK Parameter*	ERAXIS IV Dosing Regimen (LD/MD, mg) <sup>†</sup>	
	100/50	200/100
C <sub>max, ss</sub> [mg/L]	4.2 (22.4)	7.2 (23.3)
C <sub>min, ss</sub> [mg/L]	1.6 (42.1)	3.3 (41.8)
AUC <sub>ss</sub> [mg•h/L]	55.2 (32.5)	110.3 (32.5)
CL [L/h]	1.0 (33.5)	
t <sub>1/2, β</sub> [h] <sup>‡</sup>	26.5 (28.5)	

\* All the parameters were estimated by population modeling using a two-compartment model with first order elimination; AUC<sub>ss</sub>, C<sub>max,ss</sub> and C<sub>min,ss</sub> (steady state trough plasma concentration) were estimated using individual PK parameters and infusion rate of 1 mg/min to administer recommended doses of 50 and 100 mg/day.

† LD/MD: loading dose/daily maintenance dose.

‡ t<sub>1/2, β</sub> is the predominant elimination half-life that characterizes the majority of the concentration-time profile.

### *Gender*

Dosage adjustments are not required based on gender. Plasma concentrations of anidulafungin in healthy men and women were similar. In multiple-dose patient studies, drug clearance was slightly faster (approximately 22%) in men.

### *Geriatric*

Dosage adjustments are not required for geriatric patients. The population pharmacokinetic analysis showed that median clearance differed slightly between the elderly group (patients ≥65, median CL=1.07 L/h) and the non-elderly group (patients <65, median CL=1.22 L/h) and the range of clearance was similar.

### *Race*

Dosage adjustments are not required based on race. Anidulafungin pharmacokinetics were similar among Whites, Blacks, Asians, and Hispanics.

### *HIV Status*

Dosage adjustments are not required based on HIV status, irrespective of concomitant anti-retroviral therapy.

### *Hepatic Insufficiency*

Anidulafungin is not hepatically metabolized. Anidulafungin pharmacokinetics were examined in subjects with Child-Pugh class A, B or C hepatic insufficiency. Anidulafungin concentrations were not increased in subjects with any degree of hepatic insufficiency.

Though a slight decrease in AUC was observed in patients with Child-Pugh C hepatic insufficiency, it was within the range of population estimates noted for healthy subjects [see Use in Specific Populations (8.6)].

### Renal Insufficiency

Anidulafungin has negligible renal clearance. In a clinical study of subjects with mild, moderate, severe or end stage (dialysis-dependent) renal insufficiency, anidulafungin pharmacokinetics were similar to those observed in subjects with normal renal function. Anidulafungin is not dialyzable and may be administered without regard to the timing of hemodialysis [see Use in Specific Populations (8.7)].

### Pediatric

The pharmacokinetics of anidulafungin after daily doses were investigated in immunocompromised pediatric (2 through 11 years) and adolescent (12 through 17 years) patients with neutropenia. The steady state was achieved on the first day after administration of the loading dose (twice the maintenance dose), and the  $C_{max}$  and  $AUC_{ss}$  increased in a dose-proportional manner. Concentrations and exposures following administration of maintenance doses of 0.75 and 1.5 mg/kg/day in this population were similar to those observed in adults following maintenance doses of 50 and 100 mg/day, respectively (as shown in Table 7).

**Table 7: Mean (%CV) Steady State Pharmacokinetic Parameters of Anidulafungin Following IV Administration of ERAXIS Once Daily in Pediatric Patients**

PK Parameter*	ERAXIS IV Dosing Regimen (LD/MD, mg/kg) <sup>†</sup>			
	1.5/0.75		3.0/1.5	
Age Group	2-11 years (N = 6)	12-17 years (N = 6)	2-11 years (N = 6)	12-17 years (N = 6)
$C_{max, ss}$ [mg/L]	3.32 (50.0)	4.35 (22.5)	7.57 (34.2)	6.88 (24.3)
$AUC_{ss}$ [mg•h/L]	41.1 (38.4)	56.2 (27.8)	96.1 (39.5)	102.9 (28.2)

\* Data were collected on Day 5

† LD/MD: loading dose/daily maintenance dose

The pharmacokinetics of anidulafungin were also investigated in 66 pediatric patients (1 month to <18 years) with candidemia/invasive candidiasis (ICC) in a prospective, open-label, non-comparative pediatric study following administration of ERAXIS of 3 mg/kg loading dose on Day 1 and followed by 1.5 mg/kg once daily maintenance dose [see Clinical Studies (14.1)]. Based on population pharmacokinetic analysis of combined data from adult and pediatric patients with ICC, the mean steady state exposure parameters ( $AUC_{0-24,ss}$ ,  $C_{min,ss}$  and  $C_{max,ss}$ ) across age groups in the overall pediatric patients (Table 8) were comparable to those in adults receiving 200 mg loading dose and 100 mg once daily maintenance dose.

**Table 8: Mean (%CV) Steady State Pharmacokinetic Parameters of Anidulafungin Following IV Administration**

## of ERAXIS in Pediatric Patients with Candidemia/Invasive Candidiasis Estimated Using Population Pharmacokinetic Modeling

PK Parameter	ERAXIS IV Dosing Regimen (3 mg/kg LD/1.5 mg/kg MD)*		
	1 month to <2 years (N = 17)	2 to < 5 years (N = 19)	5 to <18 years (N = 30)
$C_{max, ss}$ [mg/L]	6.7 (28.3)	7.1 (39.4)	6.5 (29.2)
$C_{min, ss}$ [mg/L]	2.0 (29)	2.5 (44)	2.5 (38.4)
$AUC_{SS}$ [mg•h/L]	69.9 (25.3)	82.8 (38.5)	86.8 (35.8)

\* LD/MD: loading dose on Day 1/ once daily maintenance dose.

### Drug Interactions

*In vitro* studies showed that anidulafungin is not metabolized by human cytochrome P450 or by isolated human hepatocytes and does not significantly inhibit the activities of human CYP isoforms (1A2, 2B6, 2C8, 2C9, 2C19, 2D6 and 3A) in clinically relevant concentrations. No clinically relevant drug-drug interactions were observed with drugs likely to be co-administered with anidulafungin.

#### *Cyclosporine (CYP3A4 substrate)*

In a study in which 12 healthy adult subjects received 100 mg/day maintenance dose of anidulafungin following a 200 mg loading dose (on Days 1 to 8) and in combination with 1.25 mg/kg oral cyclosporine twice daily (on Days 5 to 8), the steady state  $C_{max}$  of anidulafungin was not significantly altered by cyclosporine; the steady state AUC of anidulafungin was increased by 22%. A separate *in vitro* study showed that anidulafungin has no effect on the metabolism of cyclosporine [see *Drug Interactions (7.1)*].

#### *Voriconazole (CYP2C19, CYP2C9, CYP3A4 inhibitor and substrate)*

In a study in which 17 healthy subjects received 100 mg/day maintenance dose of anidulafungin following a 200 mg loading dose, 200 mg twice daily oral voriconazole (following two 400 mg loading doses) and both in combination, the steady state  $C_{max}$  and AUC of anidulafungin and voriconazole were not significantly altered by co-administration [see *Drug Interactions (7.2)*].

#### *Tacrolimus (CYP3A4 substrate)*

In a study in which 35 healthy subjects received a single oral dose of 5 mg tacrolimus (on Day 1), 100 mg/day maintenance dose of anidulafungin following a 200 mg loading dose (on Days 4 to 12) and both in combination (on Day 13), the steady state  $C_{max}$  and AUC of anidulafungin and tacrolimus were not significantly altered by co-administration [see *Drug Interactions (7.3)*].

#### *Rifampin (potent CYP450 inducer)*

The pharmacokinetics of anidulafungin were examined in 27 patients that were co-administered anidulafungin and rifampin. The population pharmacokinetic analysis showed that when compared to data from patients that did not receive rifampin, the pharmacokinetics of anidulafungin were not significantly altered by co-administration

with rifampin [see *Drug Interactions (7.4)*].

#### *Amphotericin B liposome for injection*

The pharmacokinetics of anidulafungin were examined in 27 patients that were co-administered liposomal amphotericin B. The population pharmacokinetic analysis showed that when compared to data from patients that did not receive amphotericin B, the pharmacokinetics of anidulafungin were not significantly altered by co-administration with amphotericin B [see *Drug Interactions (7.5)*].

## **12.4 Microbiology**

### Mechanism of Action

Anidulafungin is a semi-synthetic echinocandin with antifungal activity. Anidulafungin inhibits glucan synthase, an enzyme present in fungal, but not mammalian cells. This results in inhibition of the formation of 1,3- $\beta$ -D-glucan, an essential component of the fungal cell wall.

### Resistance

Echinocandin resistance is due to point mutations within the genes (*FKS1 and FKS2*) encoding for subunits in the glucan synthase enzyme complex. There have been reports of *Candida* isolates with reduced susceptibility to anidulafungin, suggesting a potential for development of drug resistance. The clinical significance of this observation is not fully understood.

### Antimicrobial Activity

Anidulafungin has been shown to be active against most isolates of the following microorganisms both *in vitro* and in clinical infections:

*Candida albicans*

*Candida glabrata*

*Candida parapsilosis*

*Candida tropicalis*

The following *in vitro* data are available, but their clinical significance is unknown. At least 90 percent of the following fungi exhibit an *in vitro* minimum inhibitory concentration (MIC) less than or equal to the susceptible breakpoint for anidulafungin against isolates of the following *Candida* species. However, the effectiveness of anidulafungin in treating clinical infections due to these fungi has not been established in adequate and well-controlled clinical trials:

*Candida guilliermondii*

*Candida krusei*

### Susceptibility Testing

For specific information regarding susceptibility test interpretive criteria and associated test methods and quality control standards recognized by FDA for this drug, please see: <https://www.fda.gov/STIC>.

## **13 NONCLINICAL TOXICOLOGY**

### **13.1 Carcinogenesis, Mutagenesis, Impairment of Fertility**

Long-term animal carcinogenicity studies of anidulafungin have not been conducted.

Anidulafungin was not genotoxic in the following *in vitro* studies: bacterial reverse mutation assays, a chromosome aberration assay with Chinese hamster ovary cells, and a forward gene mutation assay with mouse lymphoma cells. Anidulafungin was not genotoxic in mice using the *in vivo* micronucleus assay.

Anidulafungin produced no adverse effects on fertility in male or female rats at intravenous doses of 20 mg/kg/day (equivalent to 2 times the proposed therapeutic maintenance dose of 100 mg/day on the basis of relative body surface area).

### **13.2 Animal Toxicology and/or Pharmacology**

In 3 month studies, liver toxicity, including single cell hepatocellular necrosis, hepatocellular hypertrophy and increased liver weights were observed in monkeys and rats at doses equivalent to 5–6 times human exposure. For both species, hepatocellular hypertrophy was still noted one month after the end of dosing.

## **14 CLINICAL STUDIES**

### **14.1 Candidemia and Other *Candida* Infections (Intra-abdominal Abscess and Peritonitis)**

#### Adults Candidemia and Other *Candida* Infections (Intra-abdominal Abscess and Peritonitis) Trial

The safety and efficacy of ERAXIS were evaluated in a Phase 3, randomized, double-blind study of patients with candidemia and/or other forms of invasive candidiasis. Patients were randomized to receive once daily IV ERAXIS (200 mg loading dose followed by 100 mg maintenance dose) or IV fluconazole (800 mg loading dose followed by 400 mg maintenance dose). Patients were stratified by APACHE II score ( $\leq 20$  and  $> 20$ ) and the presence or absence of neutropenia. Patients with *Candida* endocarditis, osteomyelitis or meningitis, or those with infection due to *C. krusei*, were excluded from the study. Treatment was administered for at least 14 and not more than 42 days. Patients in both study arms were permitted to switch to oral fluconazole after at least 10 days of intravenous therapy, provided that they were able to tolerate oral medication, were afebrile for at least 24 hours, and the last blood cultures were negative for *Candida* species.

Patients who received at least one dose of study medication and who had a positive culture for *Candida* species from a normally sterile site before entry into the study (modified intent-to-treat [MITT] population) were included in the analysis of global response at the end of IV therapy. A successful global response required clinical cure or improvement (significant, but incomplete resolution of signs and symptoms of the *Candida* infection and no additional antifungal treatment), and documented or presumed microbiological eradication. Patients with an indeterminate outcome were analyzed as failures in this population.

Two hundred and fifty-six patients in the intent-to-treat (ITT) population were randomized and received at least one dose of study medication. In ERAXIS-treated patients, the age range was 16–89 years, the gender distribution was 50% male and



50% female, and the race distribution was 71% White, 20% Black/African American, 7% Hispanic, 2% other races. The median duration of IV therapy was 14 and 11 days in the ERAXIS and fluconazole arms, respectively. For those who received oral fluconazole, the median duration of oral therapy was 7 days for the ERAXIS arm and 5 days for the fluconazole arm.

Patient disposition is presented in Table 9.

**Table 9: Patient Disposition and Reasons for Discontinuation in Candidemia and other Candida Infections Study**

	<b>ERAXIS</b>	<b>Fluconazole</b>
	<b>n (%)</b>	<b>n (%)</b>
Treated patients	131	125
Patients completing study through 6 week follow-up	94 (72)	80 (64)
<b>DISCONTINUATIONS FROM STUDY MEDICATION</b>		
Total discontinued from study medication	34 (26)	48 (38)
Discontinued due to adverse events	12 (9)	21 (17)
Discontinued due to lack of efficacy	11 (8)	16 (13)

Two hundred and forty-five patients (127 ERAXIS, 118 fluconazole) met the criteria for inclusion in the MITT population. Of these, 219 patients (116 ERAXIS, 103 fluconazole) had candidemia only. Risk factors for candidemia among patients in both treatment arms in this study were: presence of a central venous catheter (78%), receipt of broad-spectrum antibiotics (69%), recent surgery (42%), recent hyperalimentation (25%), and underlying malignancy (22%). The most frequent species isolated at baseline was *C. albicans* (62%), followed by *C. glabrata* (20%), *C. parapsilosis* (12%) and *C. tropicalis* (11%). The majority (97%) of patients were non-neutropenic (ANC >500) and 81% had APACHE II scores less than or equal to 20.

Global success rates in patients with candidemia and other *Candida* infections are summarized in Table 10.

**Table 10: Efficacy Analysis: Global Success in patients with Candidemia and other Candida Infections (MITT Population)**

<b>Time-point</b>	<b>ERAXIS (N=127) n (%)</b>	<b>Fluconazole (N=118) n (%)</b>	<b>Treatment Difference*, % (95% C.I.)</b>
End of IV Therapy	96 (75.6)	71 (60.2)	15.4 (3.9, 27.0)
End of All Therapy <sup>†</sup>	94 (74.0)	67 (56.8)	17.2 (2.9, 31.6) <sup>‡</sup>
2 Week Follow-	87 (68.5)	58 (49.2)	15.4

up	02 (04.0)	50 (49.2)	(0.4, 30.4)‡
6 Week Follow-up	71 (55.9)	52 (44.1)	11.8 (-3.4, 27.0)‡

\* Calculated as ERAXIS minus fluconazole

† 33 patients in each study arm (26% ERAXIS and 29% fluconazole-treated) switched to oral fluconazole after the end of IV therapy.

‡ 98.3% confidence intervals, adjusted post hoc for multiple comparisons of secondary time points

Table 11 presents global response by patients with candidemia or multiple sites of *Candida* infection and mortality data for the MITT population.

**Table 11: Global Response and Mortality in Candidemia and other Candida Infections**

	<b>ERAXIS</b>	<b>Fluconazole</b>	<b>Between group difference* (95% CI)</b>
<b>No. of MITT patients</b>	127	118	
<b>Global Success (MITT) At End Of IV Therapy</b>			
<b>Candidemia</b>	88/116 (75.9%)	63/103 (61.2%)	14.7 (2.5, 26.9)
Neutropenic	1/2	2/4	-
Non neutropenic	87/114 (76.3%)	61/99 (61.6%)	-
<b>Multiple sites</b>			
Peritoneal fluid/ intra-abdominal abscess	4/6	5/6	-
Blood/ peritoneum (intra-abdominal abscess)	2/2	0/2	-
Blood /bile	-	1/1	-
Blood/renal	-	1/1	-
Pancreas	-	0/3	-
Pelvic abscess	-	1/2	-
Pleural fluid	1/1	-	-
Blood/ pleural fluid	0/1	-	-
Blood/left thigh lesion biopsy	1/1	-	-
<b>Total</b>	<b>8/11 (72.7%)</b>	<b>8/15 (53.3%)</b>	<b>-</b>
<b>Mortality</b>			
<b>Overall study mortality</b>	<b>29/127 (22.8%)</b>	<b>37/118 (31.4%)</b>	<b>-</b>
Mortality during study	10/127	17/118	-

therapy	(7.9%)	(14.4%)	-
Mortality attributed to <i>Candida</i>	2/127 (1.6%)	5/118 (4.2%)	-

\* Calculated as ERAXIS minus fluconazole

### Pediatric Candidemia/Invasive Candidiasis Trial

A prospective, open-label, non-comparative, multinational trial (National Clinical Trial (NCT) number 00761267) assessed the safety and efficacy of ERAXIS in 68 pediatric patients aged 1 month to <18 years with candidemia/invasive candidiasis. Patients were stratified by age (1 month to <2 years, 2 to <5 years, and 5 to <18 years) and received once daily intravenous ERAXIS (3 mg/kg loading dose on Day 1, and 1.5 mg/kg daily maintenance dose thereafter) followed by an optional switch to oral fluconazole (6–12 mg/kg/day, maximum 800 mg/day) up to Day 49. Patients were followed at 2 and 6 weeks after EOT.

Among 68 ERAXIS-treated patients, 64 had microbiologically confirmed *Candida* infection and were evaluated for efficacy in the modified intent-to-treat (MITT) population. Overall, 59 patients (92.2%) had *Candida* isolated from blood only. The most commonly isolated pathogens were *Candida albicans* (25 [39.1%] patients), followed by *Candida parapsilosis* (17 [26.6%] patients), and *Candida tropicalis* (9 [14.1%] patients). A successful global response was defined as having both successful clinical (cure or improvement) and microbiological (eradication or presumed eradication) response. The overall rates of successful global response in the MITT population are presented in Table 12 below.

**Table 12: Summary of Successful Global Response by Age Group, MITT Population**

		<b>Successful Global Response, n (%)</b>			
<b>Timepoint</b>	<b>Global Response</b>	<b>1 month to &lt;2 years (N = 16) n (n/N, %)</b>	<b>2 to &lt;5 years (N=18) n (n/N, %)</b>	<b>5 to &lt;18 years (N=30) n (n/N, %)</b>	<b>Overall (N=64) n (n/N, %)</b>
<b>EOIVT</b>	Success	11 (68.8)	14 (77.8)	20 (66.7)	45 (70.3)
	95% CI	(41.3, 89.0)	(52.4, 93.6)	(47.2, 82.7)	(57.6, 81.1)
<b>EOT</b>	Success	11 (68.8)	14 (77.8)	21 (70.0)	46 (71.9)
	95% CI	(41.3, 89.0)	(52.4, 93.6)	(50.6, 85.3)	(59.2, 82.4)
<b>2-week FU</b>	Success	11 (68.8)	13 (72.2)	22 (73.3)	46 (71.9)
	95% CI	(41.3, 89.0)	(46.5, 90.3)	(54.1, 87.7)	(59.2, 82.4)
<b>6-week FU</b>	Success	11 (68.8)	12 (66.7)	20 (66.7)	43 (67.2)
	95% CI	(41.3, 89.0)	(41.0, 86.7)	(47.2, 82.7)	(54.3, 78.4)

95% CI = exact 95% confidence interval for binomial proportions using Clopper-Pearson method; EOIVT = end of intravenous treatment; EOT = end of treatment; FU = follow-up; MITT =

modified intent-to-treat; N = number of subjects in the population;  
n = number of subjects with responses.

## 14.2 Esophageal Candidiasis

ERAXIS was evaluated in a double-blind, double-dummy, randomized Phase 3 study. Three hundred patients received ERAXIS (100 mg loading dose IV on Day 1 followed by 50 mg/day IV) and 301 received oral fluconazole (200 mg loading dose on Day 1 followed by 100 mg/day). Treatment duration was 7 days beyond resolution of symptoms for a minimum of 14 and a maximum of 21 days.

Of the 442 patients with culture confirmed esophageal candidiasis, most patients (91%) had *C. albicans* isolated at the baseline.

Treatment groups were similar in demographic and other baseline characteristics. In ERAXIS-treated patients, the age range was 16–69 years, the gender distribution was 42% male and 58% female, and the race distribution was 15% White, 49% Black/African American, 15% Asian, 0.3 % Hispanic, 21% other races.

In this study, of 280 patients tested, 237 (84.6%) tested HIV positive. In both groups the median time to resolution of symptoms was 5 days and the median duration of therapy was 14 days.

Efficacy was assessed by endoscopic outcome at end of therapy (EOT). Patients were considered clinically evaluable if they received at least 10 days of therapy, had an EOT assessment with a clinical outcome other than 'indeterminate', had an endoscopy at EOT, and did not have any protocol violations prior to the EOT visit that would affect an assessment of efficacy.

An endoscopic success, defined as cure (endoscopic grade of 0 on a 4-point severity scale) or improvement (decrease of one or more grades from baseline), was seen in 225/231 (97.4%) ERAXIS-treated patients and 233/236 (98.7%) fluconazole-treated patients (Table 13). The majority of these patients were endoscopic cures (grade=0). Two weeks after completing therapy, the ERAXIS group had significantly more endoscopically-documented relapses than the fluconazole group, 120/225 (53.3%) vs. 45/233 (19.3%), respectively (Table 13).

**Table 13: Endoscopy Results in Patients with Esophageal Candidiasis (Clinically Evaluable Population)**

<b>Endoscopic Response at End of Therapy</b>				
<b>Response</b>	<b>ERAXIS N=231</b>	<b>Fluconazole N=236</b>	<b>Treatment Difference*</b>	<b>95% CI</b>
Endoscopic Success, n (%)	225 (97.4)	233 (98.7)	-1.3%	-3.8%, 1.2%
Cure	204 (88.3)	221 (93.6)		
Improvement	21 (9.1)	12 (5.1)		
Failure, n (%)	6 (2.6)	3 (1.3)		
<b>Endoscopic Relapse Rates at Follow-Up, 2 Weeks Post-Treatment</b>				
			<b>Treatment</b>	

	<b>ERAXIS</b>	<b>Fluconazole</b>	<b>Treatment Difference*</b>	<b>95% CI</b>
Endoscopic Relapse, n/N (%)	120/225 (53.3%)	45/233 (19.3%)	34.0%	25.8%, 42.3%

\* Calculated as ERAXIS minus fluconazole

Clinical success (cure or improvement in clinical symptoms including odynophagia/dysphagia and retrosternal pain) occurred in 229/231 (99.1%) of the ERAXIS-treated patients and 235/236 (99.6%) of the fluconazole-treated patients at the end of therapy. For patients with *C. albicans*, microbiological success occurred in 142/162 (87.7%) of the ERAXIS-treated group and 157/166 (94.6%) of the fluconazole-treated group at the end of therapy. For patients with *Candida* species other than *C. albicans*, success occurred in 10/12 (83.3%) of the ERAXIS-treated group and 14/16 (87.5%) of the fluconazole-treated group.

## **16 HOW SUPPLIED/STORAGE AND HANDLING**

### **16.1 How Supplied**

ERAXIS (anidulafungin) for Injection is supplied in a single-dose vial of sterile, lyophilized, preservative-free, white to off-white powder. ERAXIS (anidulafungin) is available in the following packaging configuration:

#### **Single-Dose Vial of ERAXIS 50 mg**

NDC 0049-0114-28 One - 50 mg vial

#### **Single-Dose Vial of ERAXIS 100 mg**

NDC 0049-0116-28 One - 100 mg vial

### **16.2 Storage**

#### ERAXIS vials

ERAXIS (unreconstituted) vials should be stored in a refrigerator at 2°C – 8°C (36°F – 46°F). Do not freeze.

Excursions for 96 hours up to 25°C (77°F) are permitted, and the vial can be returned to storage at 2°C – 8°C (36°F – 46°F).

#### Reconstituted solution

ERAXIS reconstituted solution can be stored at up to 25°C (77°F) for up to 24 hours [see *Dosage and Administration* (2.3)].

#### Infusion Solution

ERAXIS infusion solution can be stored at temperatures up to 25°C (77°F) for up to 48

hours. Do not freeze [see *Dosage and Administration (2.4)*].

## **17 PATIENT COUNSELING INFORMATION**

### Hepatic Adverse Reactions

Inform patients about the risk of developing abnormal liver function tests and/or hepatic dysfunction. Advise the patient that liver function tests may be monitored during treatment.

### Anaphylactic and Hypersensitivity Reactions

Inform the patient that anaphylactic reactions, including shock were reported with ERAXIS. Inform the patient if these reactions occur, ERAXIS may be discontinued and appropriate treatment administered.

Inform the patient that ERAXIS is also known to cause infusion-related adverse reactions, possibly histamine-mediated. Inform the patient to report symptoms including rash, urticaria, flushing, pruritus, dyspnea, and hypotension to their healthcare provider.

### Embryo-Fetal Toxicity

Advise pregnant women and females of reproductive potential of the potential risk of ERAXIS to a fetus. Advise females to inform their healthcare provider of a known or suspected pregnancy.

### Patients with Hereditary Fructose Intolerance (HFI)

Inform patients and caregivers that ERAXIS contains fructose and can be life-threatening when administered to patients with hereditary fructose intolerance (HFI) [see *Warnings and Precautions (5.4)*]. Inquire for symptoms of fructose and/or sucrose intolerance.

This product's prescribing information may have been updated. For current full prescribing information, please visit [www.pfizer.com](http://www.pfizer.com).



Distributed by  
Roerig  
Division of Pfizer Inc  
New York, NY 10017

LAB-0336-15.0

## **PRINCIPAL DISPLAY PANEL - 50 mg Vial Label**

1 Sterile Single-dose Vial

**Eraxis**<sup>®</sup>  
(anidulafungin)  
for Injection

**50 mg/vial**

For Intravenous Infusion Only

**Pfizer Injectables**

Distributed by: Roerig  
Division of Pfizer Inc  
NY, NY 10017

**Rx only**

**Store Vial in Refrigerator at  
2 - 8° C (36 - 46° F).  
Do Not Freeze.**

**RECONSTITUTION:** Eraxis® must be reconstituted with 15 mL of sterile water for injection. After reconstitution, each mL contains 3.3 mg anidulafungin (50 mg/15 mL).

Further dilute with 5% Dextrose Injection, USP or 0.9% Sodium Chloride Injection, USP as instructed in the Prescribing Information prior to intravenous infusion.

**USUAL DOSAGE:** See prescribing information. Following reconstitution, the solution in the vial should be used within 24 hours.

1 Sterile Single-dose Vial  
**Eraxis®**  
(anidulafungin)  
for Injection  
**50 mg/vial**  
For Intravenous Infusion Only

**Pfizer** Injectables  
Distributed by: Roerig  
Division of Pfizer Inc  
NY, NY 10017

**Rx only**

LOT/EXP  
PAA161364

FPO GST Data Bar Limited (RSS) - 10 mil  
(01)00300490114288

**PRINCIPAL DISPLAY PANEL - 50 mg Vial Carton**

NDC 0049-0114-28

**Unit Pack Contains:  
1 Sterile Single-dose Vial  
Eraxis® 50 mg**

**Eraxis®**  
(anidulafungin)  
for Injection

**50 mg/vial**

For Intravenous Infusion Only

**Store Vial in Refrigerator  
at 2 - 8° C (36 - 46° F).  
Do Not Freeze.**

**Pfizer Injectables**

Distributed by: Roerig  
Division of Pfizer Inc  
NY, NY 10017

Rx only



**PRINCIPAL DISPLAY PANEL - 100 mg Vial Label**

1 Sterile Single-dose Vial

**Eraxis®**  
(anidulafungin)  
for Injection



**100 mg/vial**

For Intravenous Infusion Only

**Pfizer Injectables**

Distributed by: Roerig  
Division of Pfizer Inc  
NY, NY 10017

**Rx only**

**LOT/EXP**  
PAA161362

**Store Vial in Refrigerator at 2 - 8° C (36 - 46° F). Do Not Freeze.**

**RECONSTITUTION:** Eraxis® must be reconstituted with 30 mL of sterile water for injection. After reconstitution, each mL contains 3.3 mg anidulafungin (100 mg/30 mL). Further dilute with 5% Dextrose Injection, USP or 0.9% Sodium Chloride Injection, USP as instructed in the Prescribing Information prior to intravenous infusion.

**USUAL DOSAGE:** See prescribing information. Following reconstitution, the solution in the vial should be used within 24 hours.

1 Sterile Single-dose Vial  
**Eraxis®**  
(anidulafungin)  
for Injection  
**100 mg/vial**

For Intravenous Infusion Only

**Pfizer** Injectables

Distributed by: Roerig  
Division of Pfizer Inc  
NY, NY 10017

**Rx only**

FPO GS1 Data Bar Limited (RSS) - 12 mil  
(01)00300490116282

**PRINCIPAL DISPLAY PANEL - 100 mg Vial Carton**

NDC 0049-0116-28

**Unit Pack Contains:**

**1 Sterile Single-dose Vial  
Eraxis® 100 mg**

**Eraxis®**  
(anidulafungin)  
for Injection

**100 mg/vial**

For Intravenous Infusion Only

**Store Vial in Refrigerator  
at 2 - 8° C (36 - 46° F).  
Do Not Freeze.**

# Pfizer Injectables

Distributed by: Roerig  
Division of Pfizer Inc  
NY, NY 10017

**Rx only**



## ERAXIS

anidulafungin injection, powder, lyophilized, for solution

### Product Information

<b>Product Type</b>	HUMAN PRESCRIPTION DRUG	<b>Item Code (Source)</b>	NDC:0049-0114
<b>Route of Administration</b>	INTRAVENOUS		

### Active Ingredient/Active Moiety

Ingredient Name	Basis of Strength	Strength
<b>ANIDULAFUNGIN</b> (UNII: 9HLM53094I) (ANIDULAFUNGIN - UNII:9HLM53094I)	ANIDULAFUNGIN	50 mg in 15 mL

### Inactive Ingredients

Ingredient Name	Strength
<b>FRUCTOSE</b> (UNII: 6YSS42VSEV)	50 mg in 15 mL
<b>MANNITOL</b> (UNII: 3OWL53L36A)	250 mg in 15 mL
<b>POLYSORBATE 80</b> (UNII: 6OZP39ZG8H)	125 mg in 15 mL
<b>TARTARIC ACID</b> (UNII: W4888I119H)	5.6 mg in 15 mL
<b>SODIUM HYDROXIDE</b> (UNII: 55X04QC32I)	
<b>HYDROCHLORIC ACID</b> (UNII: QTT17582CB)	

### Packaging

#	Item Code	Package Description	Marketing Start Date	Marketing End Date
1	NDC:0049-0114-28	15 mL in 1 VIAL, SINGLE-USE; Type 0: Not a Combination Product	02/17/2006	

### Marketing Information

Marketing Category	Application Number or Monograph Citation	Marketing Start Date	Marketing End Date
NDA	NDA021632	02/17/2006	

## ERAXIS

anidulafungin injection, powder, lyophilized, for solution

### Product Information

<b>Product Type</b>	HUMAN PRESCRIPTION DRUG	<b>Item Code (Source)</b>	NDC:0049-0116
<b>Route of Administration</b>	INTRAVENOUS		

### Active Ingredient/Active Moiety

Ingredient Name	Basis of Strength	Strength
-----------------	-------------------	----------

<b>ANIDULAFUNGIN</b> (UNII: 9HLM53094I) (ANIDULAFUNGIN - UNII:9HLM53094I)		ANIDULAFUNGIN	100 mg in 30 mL	
<b>Inactive Ingredients</b>				
<b>Ingredient Name</b>			<b>Strength</b>	
FRUCTOSE (UNII: 6YSS42VSEV)			100 mg in 30 mL	
MANNITOL (UNII: 3OWL53L36A)			500 mg in 30 mL	
POLYSORBATE 80 (UNII: 6OZP39ZG8H)			250 mg in 30 mL	
TARTARIC ACID (UNII: W4888I119H)			11.2 mg in 30 mL	
SODIUM HYDROXIDE (UNII: 55X04QC32I)				
HYDROCHLORIC ACID (UNII: QTT17582CB)				
<b>Packaging</b>				
<b>#</b>	<b>Item Code</b>	<b>Package Description</b>	<b>Marketing Start Date</b>	<b>Marketing End Date</b>
1	NDC:0049-0116-28	30 mL in 1 VIAL, SINGLE-USE; Type 0: Not a Combination Product	02/17/2006	
<b>Marketing Information</b>				
<b>Marketing Category</b>		<b>Application Number or Monograph Citation</b>	<b>Marketing Start Date</b>	<b>Marketing End Date</b>
NDA		NDA021632	02/17/2006	

**Labeler** - Roerig (829076996)

**Registrant** - Pfizer Inc (113480771)

### Establishment

Name	Address	ID/FEI	Business Operations
Pharmacia & Upjohn Company LLC		618054084	ANALYSIS(0049-0114, 0049-0116) , MANUFACTURE(0049-0114, 0049-0116) , API MANUFACTURE(0049-0114, 0049-0116) , PACK(0049-0114, 0049-0116) , LABEL(0049-0114, 0049-0116)

### Establishment

Name	Address	ID/FEI	Business Operations
Eurofins Lancaster Laboratories, Inc		069777290	ANALYSIS(0049-0114, 0049-0116)

Revised: 2/2021

Roerig