

# **SPIRONOLACTONE - spironolactone tablet, film coated**

## **Jubilant Cadista Pharmaceuticals Inc.**

-----

### **HIGHLIGHTS OF PRESCRIBING INFORMATION**

**These highlights do not include all the information needed to use SPIRONOLACTONE TABLETS safely and effectively. See full prescribing information for SPIRONOLACTONE TABLETS.**

### **SPIRONOLACTONE tablets, for oral use**

**Initial U.S. Approval: 1960**

#### **INDICATIONS AND USAGE**

-----

Spironolactone tablets are aldosterone antagonist indicated for:

- The treatment of NYHA Class III-IV heart failure and reduced ejection fraction to increase survival, manage edema, and to reduce the need for hospitalization for heart failure (1.1)
- Use as an add-on therapy for the treatment of hypertension, to lower blood pressure. Lowering blood pressure reduces the risk of fatal and nonfatal cardiovascular events, primarily strokes and myocardial infarctions (1.2)
- The management of edema in adult patients who are cirrhotic when edema is not responsive to fluid and sodium restrictions and in the setting of nephrotic syndrome when treatment of the underlying disease, restriction of fluid and sodium intake, and the use of other diuretics produce an inadequate response (1.3).
- Treatment of primary hyperaldosteronism for: (1.4)
  - Short-term preoperative treatment
  - Long-term maintenance for patients with discrete aldosterone-producing adrenal adenomas who are not candidates for surgery and patients with bilateral micro or macronodular adrenal hyperplasia

#### **DOSAGE AND ADMINISTRATION**

-----

- Heart Failure: Initiate treatment at 25 mg once daily (2.2).
- Hypertension: Initiate treatment at 25 to 100 mg daily in either single or divided doses (2.3).
- Edema: Initiate therapy in a hospital setting and titrate slowly. The recommended initial daily dose is 100 mg in single or divided doses (2.4).
- Primary hyperaldosteronism: Initiate treatment at 100 to 400 mg in preparation for surgery. In patients unsuitable for surgery use the lowest effective dosage determined for the individual patient (2.5).

#### **DOSAGE FORMS AND STRENGTHS**

-----

Tablets: 25 mg, 50 mg, and 100 mg (3)

#### **CONTRAINDICATIONS**

-----

Spironolactone tablets are contraindicated in patients with (4):

- Hyperkalemia
- Addison's disease
- Concomitant use of eplerenone

#### **WARNINGS AND PRECAUTIONS**

-----

- Hyperkalemia: Monitor serum potassium within one week of initiation and regularly thereafter (5.1).
- Hypotension and Worsening Renal Function: Monitor volume status and renal function periodically (5.2).
- Electrolyte and Metabolic Abnormalities: Monitor serum electrolytes, uric acid and blood glucose periodically (5.3).
- Gynecomastia: Spironolactone can cause gynecomastia (5.4).

#### **ADVERSE REACTIONS**

-----

The most common adverse reaction with spironolactone treatment is gynecomastia (5.4, 6).

**To report SUSPECTED ADVERSE REACTIONS, contact Jubilant Cadista Pharmaceuticals Inc. at 1-800-313-4623 or FDA at 1-800-FDA-1088 or [www.fda.gov/medwatch](http://www.fda.gov/medwatch).**

---

## DRUG INTERACTIONS

---

- Agents increasing serum potassium: Concomitant administration can lead to hyperkalemia (5.1, 7.1).
- Lithium: Increased risk of lithium toxicity (7.2).
- NSAIDs: May reduce the diuretic, natriuretic and antihypertensive effect of spironolactone (7.3).
- Digoxin: Spironolactone can interfere with radioimmunologic assays of digoxin exposure (7.4).
- Cholestyramine: Hyperkalemic metabolic acidosis has been reported with concomitant use (7.5).
- Acetylsalicylic Acid (ASA): ASA may reduce the efficacy of spironolactone (7.6).
- Abiraterone: May increase prostate-specific antigen (PSA) levels (7.7).

---

## USE IN SPECIFIC POPULATIONS

---

- Pregnancy: Based on animal data, spironolactone may affect sex differentiation of the male during embryogenesis (8.1)

See 17 for PATIENT COUNSELING INFORMATION.

Revised: 4/2023

---

## FULL PRESCRIBING INFORMATION: CONTENTS\*

### 1 INDICATIONS AND USAGE

- 1.1 Heart Failure
- 1.2 Hypertension
- 1.3 Edema Associated with Hepatic Cirrhosis or Nephrotic Syndrome
- 1.4 Primary Hyperaldosteronism

### 2 DOSAGE AND ADMINISTRATION

- 2.1 General Considerations
- 2.2 Treatment of Heart Failure
- 2.3 Treatment of Essential Hypertension
- 2.4 Treatment of Edema
- 2.5 Treatment of Primary Hyperaldosteronism

### 3 DOSAGE FORMS AND STRENGTHS

### 4 CONTRAINDICATIONS

### 5 WARNINGS AND PRECAUTIONS

- 5.1 Hyperkalemia
- 5.2 Hypotension and Worsening Renal Function
- 5.3 Electrolyte and Metabolic Abnormalities
- 5.4 Gynecomastia

### 6 ADVERSE REACTIONS

### 7 DRUG INTERACTIONS

- 7.1 Drugs and Supplements Increasing Serum Potassium
- 7.2 Lithium
- 7.3 Nonsteroidal anti-inflammatory drugs (NSAIDs)
- 7.4 Digoxin
- 7.5 Cholestyramine
- 7.6 Acetylsalicylic Acid
- 7.7 Abiraterone

### 8 USE IN SPECIFIC POPULATIONS

- 8.1 Pregnancy
- 8.2 Lactation
- 8.4 Pediatric Use
- 8.6 Use in Renal Impairment

8.5 Geriatric Use

8.7 Use in Hepatic Impairment

**10 OVERDOSAGE**

**11 DESCRIPTION**

**12 CLINICAL PHARMACOLOGY**

12.1 Mechanism of Action

12.2 Pharmacodynamics

12.3 Pharmacokinetics

**13 NONCLINICAL TOXICOLOGY**

13.1 Carcinogenesis, Mutagenesis, Impairment of Fertility

**14 CLINICAL STUDIES**

14.1 Heart Failure

14.2 Hypertension

**16 HOW SUPPLIED/STORAGE AND HANDLING**

**17 PATIENT COUNSELING INFORMATION**

\* Sections or subsections omitted from the full prescribing information are not listed.

---

**FULL PRESCRIBING INFORMATION**

**1 INDICATIONS AND USAGE**

**1.1 Heart Failure**

Spironolactone tablets are indicated for treatment of NYHA Class III-IV heart failure and reduced ejection fraction to increase survival, manage edema, and reduce the need for hospitalization for heart failure.

Spironolactone tablets are usually administered in conjunction with other heart failure therapies.

**1.2 Hypertension**

Spironolactone tablets are indicated as add-on therapy for the treatment of hypertension, to lower blood pressure in patients who are not adequately controlled on other agents. Lowering blood pressure reduces the risk of fatal and nonfatal cardiovascular events, primarily strokes and myocardial infarctions. These benefits have been seen in controlled trials of antihypertensive drugs from a wide variety of pharmacologic classes.

Control of high blood pressure should be part of comprehensive cardiovascular risk management, including, as appropriate, lipid control, diabetes management, antithrombotic therapy, smoking cessation, exercise, and limited sodium intake. Many patients will require more than one drug to achieve blood pressure goals. For specific advice on goals and management, see published guidelines, such as those of the National High Blood Pressure Education Program's Joint National Committee on Prevention, Detection, Evaluation, and Treatment of High Blood Pressure (JNC).

Numerous antihypertensive drugs, from a variety of pharmacologic classes and with different mechanisms of action, have been shown in randomized controlled trials to reduce cardiovascular morbidity and mortality, and it can be concluded that it is blood pressure reduction, and not some other pharmacologic property of the drugs, that is largely responsible for those benefits. The largest and most consistent cardiovascular outcome benefit has been a reduction in the risk of stroke, but reductions in myocardial infarction and cardiovascular mortality also have been seen regularly.

Elevated systolic or diastolic pressure causes increased cardiovascular risk, and the absolute risk increase per mmHg is greater at higher blood pressures, so that even modest reductions of severe hypertension can provide substantial benefit. Relative risk reduction from blood pressure reduction is similar across populations with varying absolute risk, so the absolute benefit is greater in patients who are at higher risk independent of their hypertension (for example, patients with diabetes or hyperlipidemia), and such patients would be expected to benefit from more aggressive treatment to a lower blood pressure goal.

Some antihypertensive drugs have smaller blood pressure effects (as monotherapy) in black patients, and many antihypertensive drugs have additional approved indications and effects (e.g., on angina, heart failure, or diabetic kidney disease). These considerations may guide selection of therapy.

### **1.3 Edema Associated with Hepatic Cirrhosis or Nephrotic Syndrome**

Spironolactone tablets are indicated for the management of edema in the following settings:

- Cirrhosis of the liver when edema is not responsive to fluid and sodium restriction.
- Nephrotic syndrome when treatment of the underlying disease, restriction of fluid and sodium intake, and the use of other diuretics produce an inadequate response.

**Because it increases serum potassium, spironolactone tablets may be useful for treating edema when administration of other diuretics** has caused hypokalemia.

### **1.4 Primary Hyperaldosteronism**

Spironolactone tablets are indicated in the following settings:

- Short-term preoperative treatment of patients with primary hyperaldosteronism.
- Long-term maintenance therapy for patients with discrete aldosterone-producing adrenal adenomas who are not candidates for surgery.
- Long-term maintenance therapy for patients with bilateral micro or macronodular adrenal hyperplasia (idiopathic hyperaldosteronism).

## **2 DOSAGE AND ADMINISTRATION**

### **2.1 General Considerations**

Spironolactone tablets can be taken with or without food, but should be taken consistently with respect to food [*see Clinical Pharmacology (12.3)*].

## 2.2 Treatment of Heart Failure

In patients with serum potassium  $\leq 5.0$  mEq/L and eGFR  $>50$  mL/min/1.73 m<sup>2</sup>, initiate treatment at 25 mg once daily. Patients who tolerate 25 mg once daily may have their dosage increased to 50 mg once daily as clinically indicated. Patients who develop hyperkalemia on 25 mg once daily may have their dosage reduced to 25 mg every other day [see *Warnings and Precautions (5.1)*]. In patients with an eGFR between 30 and 50 mL/min/1.73 m<sup>2</sup> consider initiating therapy at 25 mg every other day because of the risk of hyperkalemia [see *Use in Specific Populations (8.6)*].

## 2.3 Treatment of Essential Hypertension

The recommended initial daily dose is 25 to 100 mg of spironolactone tablets administered in either single or divided doses is recommended. Dosage can be titrated at two-week intervals. Doses greater than 100 mg/day generally do not provide additional reductions in blood pressure.

## 2.4 Treatment of Edema

In patients with cirrhosis, initiate therapy in a hospital setting and titrate slowly [see *Use in Specific Populations (8.7)*]. The recommended initial daily dosage is 100 mg of spironolactone tablets administered in either single or divided doses, but may range from 25 to 200 mg daily. When given as the sole agent for diuresis, administer for at least five days before increasing dose to obtain desired effect.

## 2.5 Treatment of Primary Hyperaldosteronism

Administer spironolactone tablets in doses of 100 to 400 mg daily in preparation for surgery. For patients who are considered unsuitable for surgery, spironolactone tablets can be used as long-term maintenance therapy at the lowest effective dosage determined for the individual patient.

## 3 DOSAGE FORMS AND STRENGTHS

Spironolactone Tablets, USP 25 mg: brown colored, round, biconvex, film-coated tablets debossed with 'TL 216' on one side and plain on the other side.

Spironolactone Tablets, USP 50 mg: brown colored, round, biconvex, film-coated tablets debossed with 'TL 217' on one side and scored on the other side.

Spironolactone Tablets, USP 100 mg: brown colored, round, biconvex, film-coated tablets debossed with 'TL 218' on one side and scored on the other side.

## 4 CONTRAINDICATIONS

Spironolactone is contraindicated in the patients with:

- Hyperkalemia
- Addison's disease
- Concomitant use of eplerenone

## **5 WARNINGS AND PRECAUTIONS**

### **5.1 Hyperkalemia**

Spironolactone can cause hyperkalemia. This risk is increased by impaired renal function or concomitant potassium supplementation, potassium-containing salt substitutes or drugs that increase potassium, such as angiotensin converting enzyme inhibitors and angiotensin receptor blockers [see *Drug Interactions (7.1)*].

Monitor serum potassium within 1 week of initiation or titration of spironolactone and regularly thereafter. More frequent monitoring may be needed when spironolactone is given with other drugs that cause hyperkalemia or in patients with impaired renal function.

If hyperkalemia occurs, decrease the dose or discontinue spironolactone and treat hyperkalemia.

### **5.2 Hypotension and Worsening Renal Function**

Excessive diuresis may cause symptomatic dehydration, hypotension and worsening renal function, particularly in salt-depleted patients or those taking angiotensin converting enzyme inhibitors and angiotensin II receptor blockers. Worsening of renal function can also occur with concomitant use of nephrotoxic drugs (e.g., aminoglycosides, cisplatin, and NSAIDs). Monitor volume status and renal function periodically.

### **5.3 Electrolyte and Metabolic Abnormalities**

In addition to causing hyperkalemia, spironolactone can cause hyponatremia, hypomagnesemia, hypocalcemia, hypochloremic alkalosis, and hyperglycemia. Asymptomatic hyperuricemia can occur and rarely gout is precipitated. Monitor serum electrolytes, uric acid and blood glucose periodically.

### **5.4 Gynecomastia**

Spironolactone can cause gynecomastia. In Randomized Spironolactone Evaluation Study, patients with heart failure treated with a mean dose of 26 mg of spironolactone once daily, about 9% of the male subjects developed gynecomastia. The risk of gynecomastia increases in a dose-dependent manner with an onset that varies widely from 1-2 months to over a year. Gynecomastia is usually reversible.

## **6 ADVERSE REACTIONS**

The following clinically significant adverse reactions are described elsewhere in the labeling:

- Hyperkalemia [see *Warnings and Precautions (5.1)*]
- Hypotension and Worsening Renal Function [see *Warnings and Precautions (5.2)*]
- Electrolyte and Metabolic Abnormalities [see *Warnings and Precautions (5.3)*]
- Gynecomastia [see *Warnings and Precautions (5.4)*]
- Impaired neurological function/coma in patients with hepatic impairment, cirrhosis and ascites [see *Use in Specific Populations (8.7)*]

The following adverse reactions associated with the use of spironolactone were identified

in clinical trials or postmarketing reports. Because these reactions were reported voluntarily from a population of uncertain size, it is not always possible to estimate their frequency, reliably, or to establish a causal relationship to drug exposure.

*Digestive:* Gastric bleeding, ulceration, gastritis, diarrhea and cramping, nausea, vomiting.

*Reproductive:* Decreased libido, inability to achieve or maintain erection, irregular menses or amenorrhea, postmenopausal bleeding, breast and nipple pain.

*Hematologic:* Leukopenia (including agranulocytosis), thrombocytopenia.

*Hypersensitivity:* Fever, urticaria, maculopapular or erythematous cutaneous eruptions, anaphylactic reactions, vasculitis.

*Metabolism:* Hyperkalemia, electrolyte disturbances [see *Warnings and Precautions (5.1,5.3)*], hyponatremia, hypovolemia.

*Musculoskeletal:* Leg cramps.

*Nervous system/psychiatric:* Lethargy, mental confusion, ataxia, dizziness, headache, drowsiness.

*Liver/biliary:* A very few cases of mixed cholestatic/hepatocellular toxicity, with one reported fatality, have been reported with spironolactone administration.

*Renal:* Renal dysfunction (including renal failure).

*Skin:* Stevens-Johnson Syndrome (SJS), toxic epidermal necrolysis (TEN), drug rash with eosinophilia and systemic symptoms (DRESS), alopecia, pruritis.

## **7 DRUG INTERACTIONS**

### **7.1 Drugs and Supplements Increasing Serum Potassium**

Concomitant administration of spironolactone with potassium supplementation or drugs that can increase potassium may lead to severe hyperkalemia. In general, discontinue potassium supplementation in heart failure patients who start spironolactone [see *Warnings and Precautions (5.1) and Clinical Pharmacology (12.3)*]. Check serum potassium levels when ACE inhibitor or ARB therapy is altered in patients receiving spironolactone.

Examples of drugs that can increase potassium include:

- ACE inhibitors
- angiotensin receptor blockers
- non-steroidal anti-inflammatory drugs (NSAIDs)
- heparin and low molecular weight heparin
- trimethoprim

### **7.2 Lithium**

Like other diuretics, spironolactone reduces the renal clearance of lithium, thus increasing the risk of lithium toxicity. Monitor lithium levels periodically when spironolactone is coadministered [see *Clinical Pharmacology (12.3)*].

### **7.3 Nonsteroidal anti-inflammatory drugs (NSAIDs)**

In some patients, the administration of an NSAID can reduce the diuretic, natriuretic, and antihypertensive effect of diuretics. Therefore, when spironolactone and NSAIDs are used concomitantly, monitor closely to determine if the desired effect of the diuretic is obtained [see *Clinical Pharmacology (12.3)*].

### **7.4 Digoxin**

Spironolactone and its metabolites interfere with radioimmunoassays for digoxin and increase the apparent exposure to digoxin. It is unknown to what extent, if any, spironolactone may increase actual digoxin exposure. In patients taking concomitant digoxin, use an assay that does not interact with spironolactone.

### **7.5 Cholestyramine**

Hyperkalemic metabolic acidosis has been reported in patients given spironolactone concurrently with cholestyramine.

### **7.6 Acetylsalicylic Acid**

Acetylsalicylic acid may reduce the efficacy of spironolactone. Therefore, when spironolactone and acetylsalicylic acid are used concomitantly, spironolactone may need to be titrated to higher maintenance dose and the patient should be observed closely to determine if the desired effect is obtained [see *Clinical Pharmacology (12.3)*].

### **7.7 Abiraterone**

Spironolactone binds to the androgen receptor and may increase prostate-specific antigen (PSA) levels in abiraterone-treated prostate cancer patients. Concomitant use of spironolactone and abiraterone is not recommended.

## **8 USE IN SPECIFIC POPULATIONS**

### **8.1 Pregnancy**

#### **Risk Summary**

Based on mechanism of action and findings in animal studies, spironolactone may affect sex differentiation of the male during embryogenesis [see *Data*]. Rat embryofetal studies report feminization of male fetuses and endocrine dysfunction in females exposed to spironolactone in utero. Limited available data from published case reports and case series did not demonstrate an association of major malformations or other adverse pregnancy outcomes with spironolactone. There are risks to the mother and fetus associated with heart failure, cirrhosis and poorly controlled hypertension during pregnancy [see *Clinical Considerations*]. Because of the potential risk to the male fetus due to anti-androgenic properties of spironolactone and animal data, avoid spironolactone in pregnant women or advise a pregnant woman of the potential risk to a male fetus.



The estimated background risk of major birth defects and miscarriage for the indicated population is unknown. All pregnancies have a background risk of birth defect, loss or other adverse outcomes. In the U.S. general population, the estimated background risk of major birth defects and miscarriage in clinically recognized pregnancies is 2% - 4% and 15% - 20%, respectively.

#### Clinical Considerations

##### *Disease-Associated Maternal and/or Embryo/Fetal Risk*

Pregnant women with congestive heart failure are at increased risk for preterm birth. Stroke volume and heart rate increase during pregnancy, increasing cardiac output, especially during the first trimester. Clinical classification of heart disease may worsen with pregnancy and lead to maternal death. Closely monitor pregnant patients for destabilization of their heart failure.

Pregnant women with symptomatic cirrhosis generally have poor outcomes including hepatic failure, variceal hemorrhage, preterm delivery, fetal growth restriction and maternal death. Outcomes are worse with coexisting esophageal varices. Pregnant women with cirrhosis of the liver should be carefully monitored and managed accordingly.

Hypertension in pregnancy increases the maternal risk for pre-eclampsia, gestational diabetes, premature delivery, and delivery complications (e.g., need for cesarean section, and post-partum hemorrhage). Hypertension increases the fetal risk for intrauterine growth restriction and intrauterine death.

#### **Data**

##### *Animal Data*

Teratology studies with spironolactone have been carried out in mice and rabbits at doses of up to 20 mg/kg/day. On a body surface area basis, this dose in the mouse is substantially below the maximum recommended human dose and, in the rabbit, approximates the maximum recommended human dose. No teratogenic or other embryotoxic effects were observed in mice, but the 20 mg/kg dose caused an increased rate of resorption and a lower number of live fetuses in rabbits. Because of its antiandrogenic activity and the requirement of testosterone for male morphogenesis, spironolactone may have the potential for adversely affecting sex differentiation of the male during embryogenesis. When administered to rats at 200 mg/kg/day between gestation days 13 and 21 (late embryogenesis and fetal development), feminization of male fetuses was observed. Offspring exposed during late pregnancy to 50 and 100 mg/kg/day doses of spironolactone exhibited changes in the reproductive tract including dose-dependent decreases in weights of the ventral prostate and seminal vesicle in males, ovaries and uteri that were enlarged in females, and other indications of endocrine dysfunction, that persisted into adulthood. Spironolactone has known endocrine effects in animals including progesterational and antiandrogenic effects.

## **8.2 Lactation**

### **Risk Summary**

Spironolactone is not present in breastmilk; however, limited data from a lactating woman at 17 days postpartum reports the presence of the active metabolite,

canrenone, in human breast milk in low amounts that are expected to be clinically inconsequential. In this case, there were no adverse effects reported for the breastfed infant after short term exposure to spironolactone; however, long term effects on a breastfed infant are unknown. There are no data on spironolactone effects on milk production. Consider the developmental and health benefits of breastfeeding along with the mother's clinical need for spironolactone and any potential adverse effects on the breastfed child from spironolactone or from the underlying maternal condition.

#### **8.4 Pediatric Use**

Safety and effectiveness in pediatric patients have not been established.

#### **8.6 Use in Renal Impairment**

Spironolactone is substantially excreted by the kidney, and the risk of adverse reactions to this drug may be greater in patients with impaired renal function. Patients with renal impairment are at increased risk of hyperkalemia. Monitor potassium closely.

#### **8.5 Geriatric Use**

Spironolactone is substantially excreted by the kidney, and the risk of adverse reactions to this drug may be greater in patients with impaired renal function. Because elderly patients are more likely to have decreased renal function, monitor renal function.

#### **8.7 Use in Hepatic Impairment**

Spironolactone can cause sudden alterations of fluid and electrolyte balance which may precipitate impaired neurological function, worsening hepatic encephalopathy and coma in patients with hepatic disease with cirrhosis and ascites. In these patients, initiate spironolactone in the hospital [*see Dosage and Administration (2.4) and Clinical Pharmacology (12.3)*].

Clearance of spironolactone and its metabolites is reduced in patients with cirrhosis. In patients with cirrhosis, start with lowest initial dose and titrate slowly [*see Dosage and Administration (2.4) and Clinical Pharmacology (12.3)*].

### **10 OVERDOSAGE**

The oral LD<sub>50</sub> of spironolactone is greater than 1000 mg/kg in mice, rats, and rabbits.

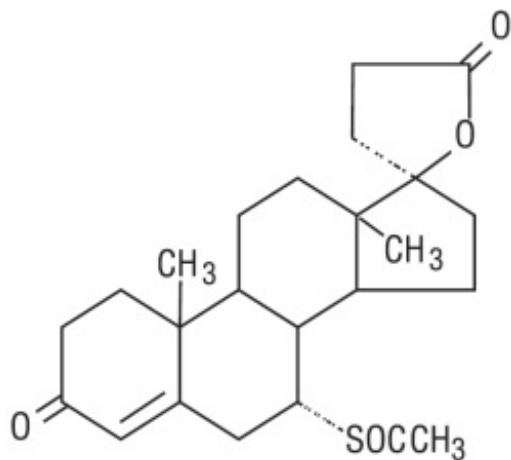
Acute overdosage of spironolactone may be manifested by drowsiness, mental confusion, maculopapular or erythematous rash, nausea, vomiting, dizziness, or diarrhea. Rarely, instances of hyponatremia, hyperkalemia, or hepatic coma may occur in patients with severe liver disease, but these are unlikely due to acute overdosage. Hyperkalemia may occur, especially in patients with impaired renal function.

**Treatment:** Induce vomiting or evacuate the stomach by lavage. There is no specific antidote. Treatment is supportive to maintain hydration, electrolyte balance, and vital functions. Patients who have renal impairment may develop hyperkalemia. In such

cases, discontinue spironolactone.

## 11 DESCRIPTION

Spironolactone oral tablets contain 25 mg, 50 mg, or 100 mg of the aldosterone antagonist spironolactone, USP 17-hydroxy-7 $\alpha$ -mercapto-3-oxo-17 $\alpha$ -pregn-4-ene-21-carboxylic acid  $\gamma$ -lactone acetate, which has the following structural formula:



Spironolactone, USP is freely soluble in benzene and chloroform; soluble in ethyl acetate and in alcohol, slightly soluble in ether, in methanol and in fixed oils and practically insoluble in water.

Inactive ingredients include calcium sulfate dihydrate, corn starch, ferric oxide black, ferric oxide red, ferric oxide yellow, peppermint, hypromellose, magnesium stearate, polyethylene glycol, povidone, and titanium dioxide.

## 12 CLINICAL PHARMACOLOGY

### 12.1 Mechanism of Action

Spironolactone and its active metabolites are specific pharmacologic antagonists of aldosterone, acting primarily through competitive binding of receptors at the aldosterone-dependent sodium-potassium exchange site in the distal convoluted renal tubule. Spironolactone causes increased amounts of sodium and water to be excreted, while potassium is retained. Spironolactone acts both as a diuretic and as an antihypertensive drug by this mechanism. It may be given alone or with other diuretic agents that act more proximally in the renal tubule.

### 12.2 Pharmacodynamics

Aldosterone antagonist activity: Increased levels of the mineralocorticoid, aldosterone, are present in primary and secondary hyperaldosteronism. Edematous states in which secondary aldosteronism is usually involved include congestive heart failure, hepatic cirrhosis, and nephrotic syndrome. By competing with aldosterone for receptor sites, Spironolactone provides effective therapy for the edema and ascites in those conditions.

Spironolactone counteracts secondary aldosteronism induced by the volume depletion and associated sodium loss caused by active diuretic therapy.

### **12.3 Pharmacokinetics**

#### Absorption

The mean time to reach peak plasma concentration of spironolactone and the active metabolite, canrenone, in healthy volunteers is 2.6 and 4.3 hours, respectively.

*Effect of food:* Food increased the bioavailability of spironolactone (as measured by AUC) by approximately 95.4%. Patients should establish a routine pattern for taking spironolactone with regard to meals [see *Dosage and Administration (2.1)*].

#### Distribution

Spironolactone and its metabolites are more than 90% bound to plasma proteins.

#### Elimination

The mean half-life of spironolactone is 1.4 hour. The mean half-life values of its metabolites including canrenone, 7- $\alpha$ -(thiomethyl) spiro lactone (TMS), and 6- $\beta$ -hydroxy-7- $\alpha$ -(thiomethyl) spiro lactone (HTMS) are 16.5, 13.8, and 15 hours, respectively.

#### Metabolism

Spironolactone is rapidly and extensively metabolized. Metabolites can be divided into two main categories: those in which sulfur of the parent molecule is removed (e.g., canrenone) and those in which the sulfur is retained (e.g., TMS and HTMS). In humans, the potencies of TMS and 7- $\alpha$ -thiospiro lactone in reversing the effects of the synthetic mineralocorticoid, fludrocortisone, on urinary electrolyte composition were approximately a third relative to spironolactone. However, since the serum concentrations of these steroids were not determined, their incomplete absorption and/or first-pass metabolism could not be ruled out as a reason for their reduced *in vivo* activities.

*Excretion:* The metabolites are excreted primarily in the urine and secondarily in bile.

#### Specific Populations

The impact of age, sex, race/ethnicity, and renal impairment on the pharmacokinetics of spironolactone have not been specifically studied.

*Patients with Hepatic Impairment:* The terminal half-life of spironolactone has been reported to be increased in patients with cirrhotic ascites [see *Use in Specific Populations (8.7)*].

#### Drug Interaction Studies:

*Drugs and Supplements Increasing Serum Potassium:* Concomitant administration of spironolactone with potassium supplementation, salt substitutes containing potassium, a diet rich in potassium, or drugs that can increase potassium, including ACE inhibitors, angiotensin II antagonists, non-steroidal anti-inflammatory drugs (NSAIDs), heparin and low molecular weight heparin, may lead to severe hyperkalemia [see *Warnings and Precautions (5.1)* and *Drug Interactions (7.1)*].

*Lithium:* Spironolactone reduces the renal clearance of lithium, inducing a high risk of lithium toxicity [see *Warnings and Precautions (5.1)* and *Drug Interactions (7.2)*].

*Nonsteroidal Anti-Inflammatory Drugs (NSAIDs):* In some patients, the administration of an NSAID can reduce the diuretic, natriuretic, and antihypertensive effect of loop, potassium-sparing, and thiazide diuretics [see *Drug Interactions (7.3)*].

*Acetylsalicylic acid:* A single dose of 600 mg of acetylsalicylic acid inhibited the natriuretic effect of spironolactone, which was hypothesized to be due to inhibition of tubular secretion of canrenone, causing decreased effectiveness of spironolactone [see *Drug Interactions (7.6)*].

## **13 NONCLINICAL TOXICOLOGY**

### **13.1 Carcinogenesis, Mutagenesis, Impairment of Fertility**

#### Carcinogenesis

Orally administered spironolactone has been shown to be a tumorigen in dietary administration studies performed in Sprague Dawley rats, with its proliferative effects manifested on endocrine organs and the liver. In an 18-month study using doses of about 50, 150, and 500 mg/kg/day, there were statistically significant increases in benign adenomas of the thyroid and testes and, in male rats, a dose-related increase in proliferative changes in the liver (including hepatocytomegaly and hyperplastic nodules). In 24-month studies in which rats were administered doses of about 10, 30, 100, and 150 mg spironolactone /kg/day, the range of proliferative effects included significant increases in hepatocellular adenomas and testicular interstitial cell tumors in males, and significant increases in thyroid follicular cell adenomas and carcinomas in both sexes. There was also a statistically significant increase in benign uterine endometrial stromal polyps in females.

#### Mutagenesis

Neither spironolactone nor potassium canrenoate produced mutagenic effects in tests using bacteria or yeast. In the absence of metabolic activation, neither spironolactone nor potassium canrenoate has been shown to be mutagenic in mammalian tests *in vitro*. In the presence of metabolic activation, spironolactone has been reported to be negative in some mammalian mutagenicity tests *in vitro* and inconclusive (but slightly positive) for

mutagenicity in other mammalian tests *in vitro*. In the presence of metabolic activation, potassium canrenoate has been reported to test positive for mutagenicity in some mammalian tests *in vitro*, inconclusive in others, and negative in still others.

#### Impairment of Fertility

In a three-litter reproduction study in which female rats received dietary doses of 15 and 50 mg spironolactone/kg/day, there were no effects on mating and fertility, but there was a small increase in incidence of stillborn pups at 50 mg/kg/day. When injected into female rats (100 mg/kg/day for 7 days, i.p.), spironolactone was found to increase the length of the estrous cycle by prolonging diestrus during treatment and inducing constant diestrus during a two-week post-treatment observation period. These effects were associated with retarded ovarian follicle development and a reduction in circulating estrogen levels, which would be expected to impair mating, fertility, and fecundity. Spironolactone (100 mg/kg/day), administered i.p. to female mice during a two-week cohabitation period with untreated males, decreased the number of mated mice that conceived (effect shown to be caused by an inhibition of ovulation) and decreased the number of implanted embryos in those that became pregnant (effect shown to be caused by an inhibition of implantation), and at 200 mg/kg, also increased the latency period to mating.

## **14 CLINICAL STUDIES**

### **14.1 Heart Failure**

The Randomized Spironolactone Evaluation Study was a placebo controlled, double-blind study of the effect of spironolactone on mortality in patients with highly symptomatic heart failure and reduced ejection fraction. To be eligible to participate patients had to have an ejection fraction of  $\leq 35\%$ , NYHA class III-IV symptoms, and a history of NYHA class IV symptoms within the last 6 months before enrollment. Patients with a baseline serum creatinine of  $>2.5$  mg/dL or a recent increase of 25% or with a baseline serum potassium of  $>5.0$  mEq/L were excluded.

Follow-up visits and laboratory measurements (including serum potassium and creatinine) were performed every four weeks for the first 12 weeks, then every 3 months for the first year, and then every 6 months thereafter.

The initial dose of spironolactone was 25 mg once daily. Patients who were intolerant of the initial dosage regimen had their dose decreased to one 25 mg tablet every other day at one to four weeks. Patients who were tolerant of one tablet daily at 8 weeks may have had their dose increased to 50 mg daily at the discretion of the investigator. The mean daily dose at study end for patients randomized to spironolactone was 26 mg.

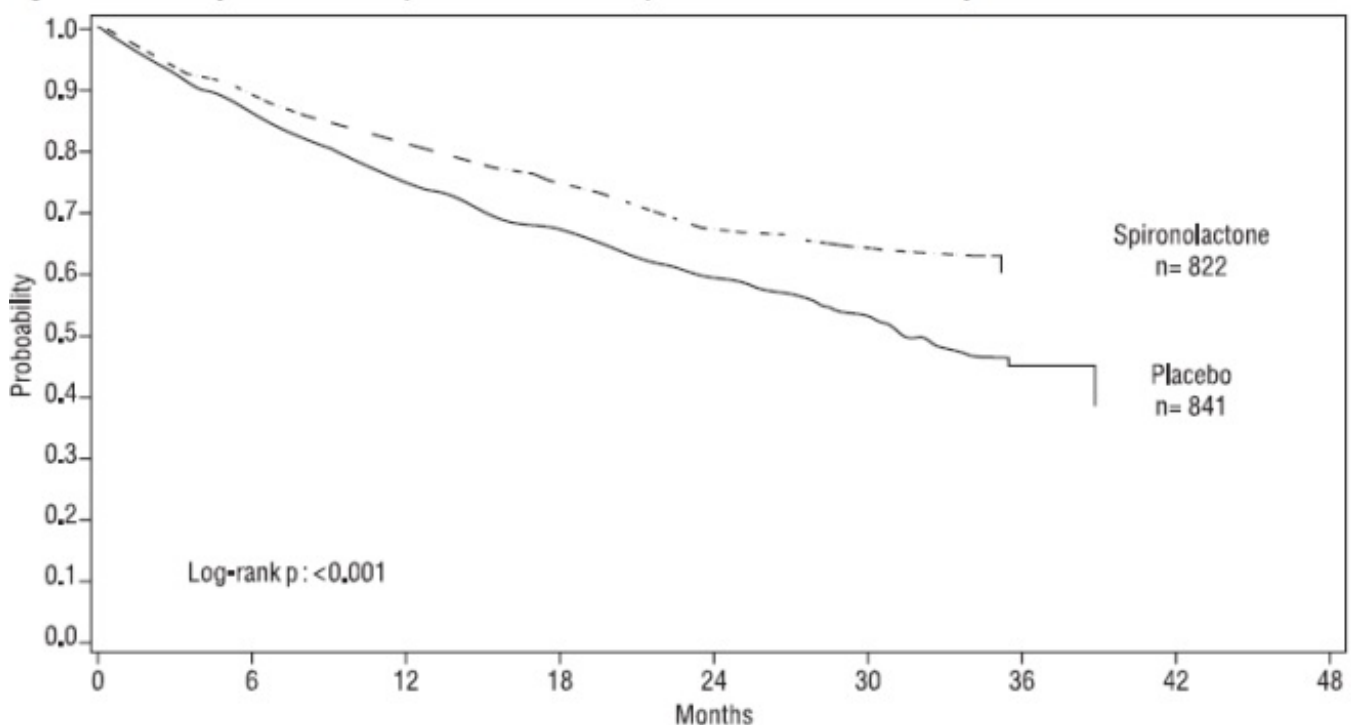
1663 patients were randomized 1:1 to spironolactone or placebo. 87% of patients were white, 7% black, 2% Asian. 73% were male and median age was 67. The median ejection fraction was 26%. 70% were NYHA class III and 29% class IV. The etiology of heart failure was ischemic in 55%, and non-ischemic in 45%. There was a history of myocardial infarction in 28%, of hypertension in 24%, and of diabetes in 22%. The median baseline serum creatinine was 1.2 mg/dL and the median baseline creatinine clearance was 57 mL/min.

At baseline 100% of patients were taking loop diuretic and 95% were taking an ACE

inhibitor. Other medications used at any time during the study included digoxin (78%), anticoagulants (58%), aspirin (43%), and beta-blockers (15%).

The primary endpoint for Randomized Spironolactone Evaluation Study was time to all-cause mortality. Randomized Spironolactone Evaluation Study was terminated early because of significant mortality benefit demonstrated during a planned interim analysis. Compared to placebo, spironolactone reduced the risk of death by 30% ( $p < 0.001$ ; 95% confidence interval 18% to 40%). Spironolactone also reduced the risk of hospitalization for cardiac causes (defined as worsening heart failure, angina, ventricular arrhythmias, or myocardial infarction) by 30% ( $p < 0.001$ ; 95% confidence interval 18% to 41%). The survival curves by treatment group are shown in Figure 1.

**Figure 1. Survival by Treatment Group in Randomized Spironolactone Evaluation Study**



Mortality hazard ratios for some subgroups are shown in Figure 2. The favorable effect of spironolactone on mortality appeared similar for both genders and all age groups except patients younger than 55. There were too few non-whites in Randomized Spironolactone Evaluation Study to evaluate if the effects differ by race. Spironolactone's benefit appeared greater in patients with low baseline serum potassium levels and less in patients with ejection fractions  $< 0.2$ . These subgroup analyses must be interpreted cautiously.

**Figure 2. Hazard Ratios of All-Cause Mortality by Subgroup in Randomized Spironolactone Evaluation Study**

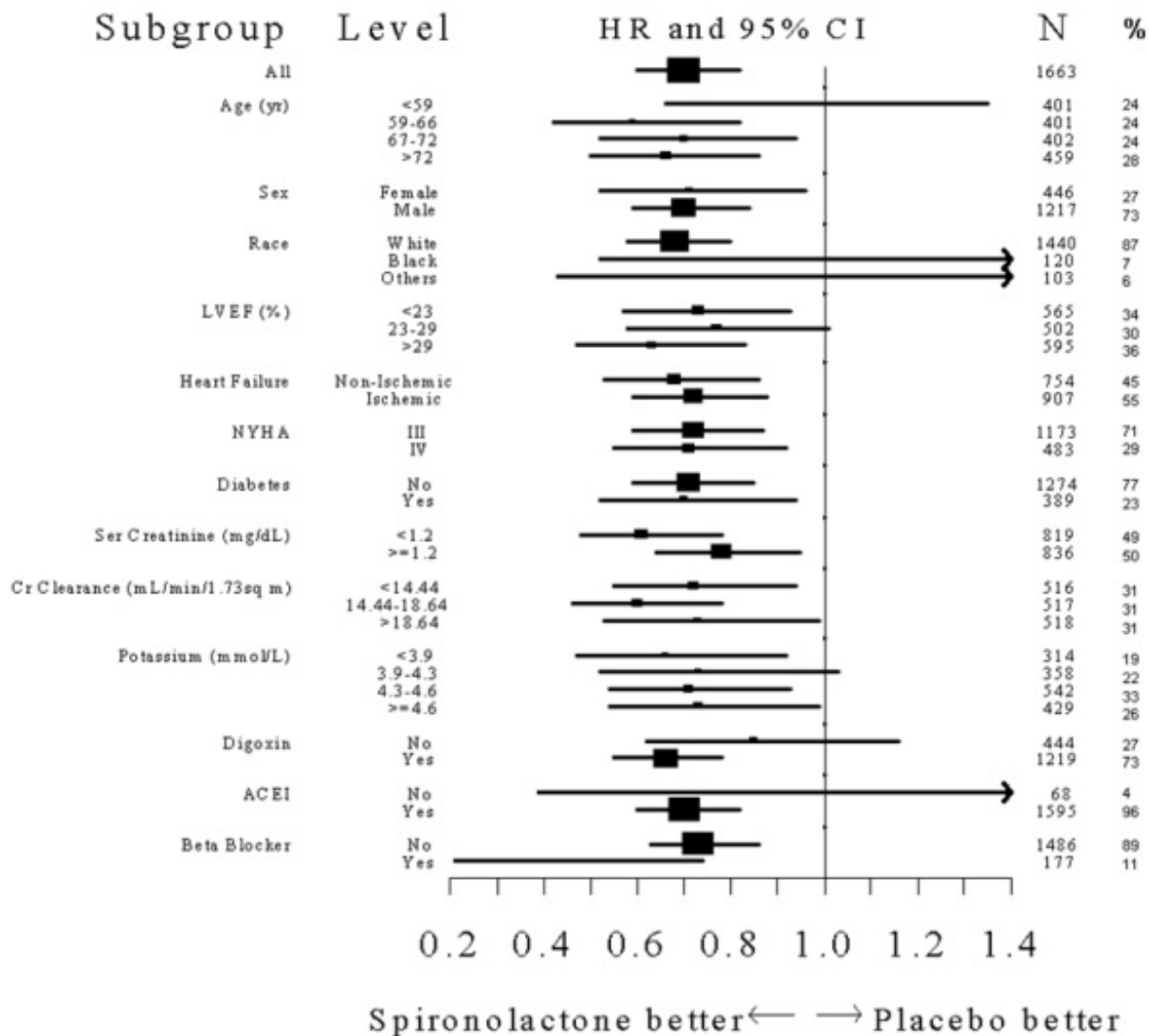


Figure 2: The size of each box is proportional to the sample size as well as the event rate. LVEF denotes left ventricular ejection fraction, Ser Creatinine denotes serum creatinine, Cr Clearance denotes creatinine clearance, and ACEI denotes angiotensin-converting enzyme inhibitor.

## 14.2 Hypertension

The dose response of spironolactone for hypertension has not been well characterized. In patients with hypertension, decreases in systolic blood pressure have been observed at doses ranging from 25 to 100 mg/day. Doses greater than 100 mg/day generally do not provide additional reductions in blood pressure [see *Dosage and Administration* (2.3)].

## 16 HOW SUPPLIED/STORAGE AND HANDLING

Spironolactone Tablets, USP 25 mg are brown colored, round, biconvex, film-coated tablets debossed with 'TL 216' on one side and plain on the other side, supplied as:

Bottle of 100 Tablets

NDC 59746-216-01



Bottle of 500 Tablets NDC 59746-216-05

Bottle of 1,000 Tablets NDC 59746-216-10

Spironolactone Tablets, USP 50 mg are brown colored, round, biconvex, film-coated tablets debossed with 'TL 217' on one side and scored on the other side, supplied as:

Bottle of 100 Tablets NDC 59746-217-01

Bottle of 500 Tablets NDC 59746-217-05

Spironolactone Tablets, USP 100 mg are brown colored, round, biconvex, film-coated tablets debossed with 'TL 218' on one side and scored on the other side, supplied as:

Bottle of 100 Tablets NDC 59746-218-01

Bottle of 500 Tablets NDC 59746-218-05

Protect from light. Dispense in tight, light-resistant, child resistant container as defined in the USP.

Store at 20°C to 25°C (68°F to 77°F); excursions permitted to 15°C to 30°C (59°F to 86°F) [See USP Controlled Room Temperature].

## **17 PATIENT COUNSELING INFORMATION**

Patients who receive spironolactone tablets should be advised to avoid potassium supplements and foods containing high levels of potassium, including salt substitutes.

### **Rx Only**

#### **Manufactured by:**

Jubilant Generics Limited  
Roorkee - 247661, India

#### **Marketed by:**

Jubilant Cadista Pharmaceuticals Inc.  
Salisbury, MD 21801, USA

**Revised: 08/2018**

**PACKAGE LABEL.PRINCIPAL DISPLAY PANEL**

## 25 mg Bottle Label

**NDC 59746-216-01**

**Spirolactone Tablets, USP**

**25 mg**

**100 Tablets Rx Only**

**CADISTA™**

Each film-coated tablet contains:  
Spirolactone USP 25 mg

USUAL DOSAGE:  
See accompanying prescribing information.

Keep this and all medications out of the reach of children.

Protect from light. Dispense in tight, light-resistant, child resistant container as defined in the USP.

Store at 20°C to 25°C (68°F to 77°F); excursions permitted to 15°C to 30°C (59°F to 86°F) [See USP Controlled Room Temperature].

**Manufactured by:**  
Jubilant Generics Ltd.  
Roorkee - 247661, India

**Marketed by:**  
Jubilant Cadista Pharmaceuticals Inc.  
Salisbury, MD 21801, USA

NDC 59746-216-01

**Spirolactone Tablets, USP**

**25 mg**

100 Tablets Rx Only

TL 216

746

Neutral Code No.: UK/Drugs/58/UA/2007

NVZ

50000000399

## 50 mg Bottle Label

**NDC 59746-217-01**

**Spirolactone Tablets, USP**

**50 mg**

**100 Tablets Rx Only**

**CADISTA™**

Each film-coated tablet contains:  
Spironolactone USP 50 mg

**USUAL DOSAGE:**  
See accompanying prescribing information.

Keep this and all medications out of the reach of children.

Protect from light. Dispense in tight, light-resistant, child resistant container as defined in the USP.

Store at 20°C to 25°C (68°F to 77°F); excursions permitted to 15°C to 30°C (59°F to 86°F) [See USP Controlled Room Temperature].

**Manufactured by:**  
Jubilant Generics Ltd.  
Roorkee - 247661, India

**Marketed by:**  
Jubilant Cadista Pharmaceuticals Inc.  
Salisbury, MD 21801, USA

NDC 59746-217-01

**Spironolactone Tablets, USP**

**50 mg**

100 Tablets  $R_x$  Only

**CADISTA™**

Neutral Code No.: UK/Drugs/58/UA/2007

**NVZ**

50000000411

## 100 mg Bottle Label

**NDC 59746-218-01**

**Spironolactone Tablets, USP**

**100 mg 100 Tablets**

**Rx Only**

**CADISTA™**

Each film-coated tablet contains:  
Spironolactone USP 100 mg

**USUAL DOSAGE:**  
See accompanying prescribing information.

Keep this and all medications out of the reach of children.

Protect from light. Dispense in tight, light-resistant, child resistant container as defined in the USP.

Store at 20°C to 25°C (68°F to 77°F); excursions permitted to 15°C to 30°C (59°F to 86°F) [See USP Controlled Room Temperature].

**Manufactured by:**  
Jubilant Generics Ltd.  
Roorkee - 247661, India

**Marketed by:**  
Jubilant Cadista Pharmaceuticals Inc.  
Salisbury, MD 21801, USA

NDC 59746-218-01

**Spironolactone Tablets, USP**

**100 mg**

100 Tablets  $R_x$  Only

**CADISTA™**

Neutral Code No.: UK/Drugs/58/UA/2007

**NVZ**

7502000471

## **SPIRONOLACTONE**

spironolactone tablet, film coated

## Product Information

<b>Product Type</b>	HUMAN PRESCRIPTION DRUG	<b>Item Code (Source)</b>	NDC:59746-216
<b>Route of Administration</b>	ORAL		

## Active Ingredient/Active Moiety

<b>Ingredient Name</b>	<b>Basis of Strength</b>	<b>Strength</b>
<b>spironolactone</b> (UNII: 27O7W4T232) (spironolactone - UNII:27O7W4T232)	spironolactone	25 mg

## Inactive Ingredients

<b>Ingredient Name</b>	<b>Strength</b>
<b>Calcium Sulfate Dihydrate</b> (UNII: 4846Q921YM)	
<b>starch, corn</b> (UNII: O8232NY3SJ)	
<b>Hypromelloses</b> (UNII: 3NXW29V3WO)	
<b>magnesium stearate</b> (UNII: 70097M6I30)	
<b>Povidone, Unspecified</b> (UNII: FZ989GH94E)	
<b>titanium dioxide</b> (UNII: 15FIX9V2JP)	
<b>Peppermint</b> (UNII: V95R5KMY2B)	
<b>Ferric Oxide Red</b> (UNII: 1K09F3G675)	
<b>Ferric Oxide Yellow</b> (UNII: EX438O2MRT)	
<b>Ferrosoferric Oxide</b> (UNII: XM0M87F357)	
<b>Polyethylene Glycol, Unspecified</b> (UNII: 3WJQ0SDW1A)	

## Product Characteristics

<b>Color</b>	BROWN	<b>Score</b>	no score
<b>Shape</b>	ROUND	<b>Size</b>	7mm
<b>Flavor</b>		<b>Imprint Code</b>	TL216
<b>Contains</b>			

## Packaging

<b>#</b>	<b>Item Code</b>	<b>Package Description</b>	<b>Marketing Start Date</b>	<b>Marketing End Date</b>
1	NDC:59746-216-01	100 in 1 BOTTLE; Type 0: Not a Combination Product	04/04/2017	
2	NDC:59746-216-05	500 in 1 BOTTLE; Type 0: Not a Combination Product	04/04/2017	
3	NDC:59746-216-10	1000 in 1 BOTTLE; Type 0: Not a Combination Product	04/04/2017	

## Marketing Information

<b>Marketing Category</b>	<b>Application Number or Monograph Citation</b>	<b>Marketing Start Date</b>	<b>Marketing End Date</b>
ANDA	ANDA203253	02/01/2013	

# SPIRONOLACTONE

spironolactone tablet, film coated

## Product Information

<b>Product Type</b>	HUMAN PRESCRIPTION DRUG	<b>Item Code (Source)</b>	NDC:59746-217
<b>Route of Administration</b>	ORAL		

## Active Ingredient/Active Moiety

Ingredient Name	Basis of Strength	Strength
spironolactone (UNII: 27O7W4T232) (spironolactone - UNII:27O7W4T232)	spironolactone	50 mg

## Inactive Ingredients

Ingredient Name	Strength
calcium sulfate (UNII: WAT0DDB505)	
starch, corn (UNII: O8232NY3SJ)	
Hypromelloses (UNII: 3NXW29V3WO)	
magnesium stearate (UNII: 70097M6I30)	
Povidone, Unspecified (UNII: FZ989GH94E)	
titanium dioxide (UNII: 15FIX9V2JP)	
Peppermint (UNII: V95R5KMY2B)	
Ferric Oxide Red (UNII: 1K09F3G675)	
Ferric Oxide Yellow (UNII: EX438O2MRT)	
Ferrosoferric Oxide (UNII: XM0M87F357)	
Polyethylene Glycol, Unspecified (UNII: 3WJQ0SDW1A)	

## Product Characteristics

<b>Color</b>	BROWN	<b>Score</b>	2 pieces
<b>Shape</b>	ROUND	<b>Size</b>	9mm
<b>Flavor</b>		<b>Imprint Code</b>	TL217
<b>Contains</b>			

## Packaging

#	Item Code	Package Description	Marketing Start Date	Marketing End Date
1	NDC:59746-217-01	100 in 1 BOTTLE; Type 0: Not a Combination Product	04/04/2017	
2	NDC:59746-217-05	500 in 1 BOTTLE; Type 0: Not a Combination Product	04/04/2017	

## Marketing Information

Marketing Category	Application Number or Monograph Citation	Marketing Start Date	Marketing End Date
--------------------	--	----------------------	--------------------

ANDA	ANDA203253	02/01/2013	
------	------------	------------	--

## SPIRONOLACTONE

spironolactone tablet, film coated

### Product Information

<b>Product Type</b>	HUMAN PRESCRIPTION DRUG	<b>Item Code (Source)</b>	NDC:59746-218
<b>Route of Administration</b>	ORAL		

### Active Ingredient/Active Moiety

Ingredient Name	Basis of Strength	Strength
spironolactone (UNII: 27O7W4T232) (spironolactone - UNII:27O7W4T232)	spironolactone	100 mg

### Inactive Ingredients

Ingredient Name	Strength
calcium sulfate (UNII: WAT0DDB505)	
starch, corn (UNII: O8232NY3SJ)	
Hypromelloses (UNII: 3NXW29V3WO)	
magnesium stearate (UNII: 70097M6I30)	
Povidone, Unspecified (UNII: FZ989GH94E)	
titanium dioxide (UNII: 15FIX9V2JP)	
Ferric Oxide Red (UNII: 1K09F3G675)	
Ferric Oxide Yellow (UNII: EX438O2MRT)	
Ferrosoferric Oxide (UNII: XM0M87F357)	
Polyethylene Glycol, Unspecified (UNII: 3WJQ0SDW1A)	
Peppermint (UNII: V95R5KMY2B)	

### Product Characteristics

<b>Color</b>	BROWN	<b>Score</b>	2 pieces
<b>Shape</b>	ROUND	<b>Size</b>	11mm
<b>Flavor</b>		<b>Imprint Code</b>	TL218
<b>Contains</b>			

### Packaging

#	Item Code	Package Description	Marketing Start Date	Marketing End Date
1	NDC:59746-218-01	100 in 1 BOTTLE; Type 0: Not a Combination Product	04/04/2017	
2	NDC:59746-218-05	500 in 1 BOTTLE; Type 0: Not a Combination Product	04/04/2017	

## Marketing Information

Marketing Category	Application Number or Monograph Citation	Marketing Start Date	Marketing End Date
ANDA	ANDA203253	02/01/2013	

**Labeler** - Jubilant Cadista Pharmaceuticals Inc. (022490515)

**Registrant** - Jubilant Generics Limited (650801538)

## Establishment

Name	Address	ID/FEI	Business Operations
Jubilant Generics Limited		650369221	MANUFACTURE(59746-216, 59746-217, 59746-218)

Revised: 4/2023

Jubilant Cadista Pharmaceuticals Inc.