

# ERLOTINIB- erlotinib tablet, film coated

## Areva Pharmaceuticals

### HIGHLIGHTS OF PRESCRIBING INFORMATION

### HIGHLIGHTS OF PRESCRIBING INFORMATION

These highlights do not include all the information needed to use ERLOTINIB TABLETS safely and effectively. See full prescribing information for ERLOTINIB TABLETS.

#### ERLOTINIB tablets, for oral use

#### Initial U.S. Approval: 2004

### INDICATIONS AND USAGE

Erlotinib tablet is a kinase inhibitor indicated for: (1)

- The treatment of patients with metastatic non-small cell lung cancer (NSCLC) whose tumors have epidermal growth factor receptor (EGFR) exon 19 deletions or exon 21 (L858R) substitution mutations as detected by an FDA-approved test receiving first-line, maintenance, or second or greater line treatment after progression following at least one prior chemotherapy regimen. (1.1)
- First-line treatment of patients with locally advanced, unresectable or metastatic pancreatic cancer, in combination with gemcitabine. (1.2)

#### Limitations of Use: (1)

- Safety and efficacy of erlotinib tablets have not been established in patients with NSCLC whose tumors have other EGFR mutations. (1.1)
- Erlotinib tablets are not recommended for use in combination with platinum-based chemotherapy. (1.1)

### DOSAGE AND ADMINISTRATION

(2)

- NSCLC: 150mg orally, on an empty stomach, once daily (2.2)
- Pancreatic cancer: 100 mg orally, on an empty stomach, once daily. (2.3)

(2)

### DOSAGE FORMS AND STRENGTHS

Tablets: 25mg, 100mg and 150mg (3) (3)

### CONTRAINDICATIONS

- None (4)

### WARNINGS AND PRECAUTIONS

(5)

- **Interstitial lung disease (ILD):** Occurs in 1.1% of patients. Withhold erlotinib tablets for acute onset of new or progressive unexplained pulmonary symptoms, such as dyspnea, cough and fever. Discontinue erlotinib if ILD is diagnosed. (5.1)
- **Renal failure:** Monitor renal function and electrolytes, particularly in patients at risk of dehydration. Withhold erlotinib tablets for severe renal toxicity. (5.2)
- **Hepatotoxicity:** Occurs with or without hepatic impairment, including hepatic failure and hepatorenal syndrome: Monitor periodic liver testing. Withhold or discontinue erlotinib tablets for severe or worsening liver tests. (5.3)
- **Gastrointestinal perforations:** Discontinue erlotinib tablets. (5.4)
- **Bullous and exfoliative skin disorders:** Discontinue erlotinib tablets. (5.5)
- **Cerebrovascular accident (CVA):** The risk of CVA is increased in patients with pancreatic cancer. (5.6)
- **Microangiopathic hemolytic anemia (MAHA):** The risk of MAHA is increased in patients with pancreatic cancer. (5.7)
- **Ocular disorders:** Discontinue erlotinib tablets for corneal perforation, ulceration or persistent severe keratitis. (5.8)
- **Hemorrhage in patients taking warfarin:** Regularly monitor INR in patients taking warfarin or other coumarin-derivative anticoagulants. (5.9)
- **Embryo-fetal toxicity:** Can cause fetal harm. Advise females of reproductive potential of the potential risk to the fetus and to use effective contraception. (5.10, 8.1, 8.3)

### ADVERSE REACTIONS

The most common adverse reactions ( $\geq 20\%$ ) with erlotinib tablets from a pooled analysis in patients with NSCLC across all approved lines of therapy, with and without EGFR mutations, and in patients with pancreatic cancer were rash, diarrhea, anorexia, fatigue, dyspnea, cough, nausea, and vomiting. (6.1) (6)

(6)

To report SUSPECTED ADVERSE REACTIONS, contact Areva at 1-855-853-4760 or FDA at 1-800-FDA-1088 or <http://www.fda.gov/medwatch> (6)

#### ----- DRUG INTERACTIONS -----

- CYP3A4 inhibitors or a combined CYP3A4 and CYP1A2 inhibitor increase erlotinib plasma concentrations. Avoid concomitant use. If not possible, reduce erlotinib dose. (2.4, 7)
- CYP3A4 inducers decrease erlotinib plasma concentrations. Avoid concomitant use. If not possible, increase erlotinib dose. (2.4, 7)
- Cigarette smoking and CYP1A2 inducers decrease erlotinib plasma concentrations. Avoid concomitant use. If not possible, increase erlotinib dose. (2.4, 7)
- Drugs that increase gastric pH decrease erlotinib plasma concentrations. For proton pump inhibitors avoid concomitant use if possible. For H-2 receptor antagonists, take erlotinib 10 hours after H-2 receptor antagonist dosing. For use with antacids, separate dosing by several hours. (2.4, 7)

#### ----- USE IN SPECIFIC POPULATIONS -----

• Lactation: Do not breastfeed (8.2) (8)  
(8)

See 17 for PATIENT COUNSELING INFORMATION. (8)

Revised: 01/2020 (8)

Revised: 5/2020

---

## FULL PRESCRIBING INFORMATION: CONTENTS\*

### 1. INDICATIONS AND USAGE

- 1.1 Non-Small Cell Lung Cancer (NSCLC)
- 1.2 Pancreatic Cancer

### 2 DOSAGE AND ADMINISTRATION

- 2.1 Selection of Patients with Metastatic NSCLC
- 2.2 Recommended Dose – NSCLC
- 2.3 Recommended Dose – Pancreatic Cancer
- 2.4 Dose Modifications

### 3 DOSAGE FORMS AND STRENGTHS

### 4 CONTRAINDICATIONS

### 5 WARNINGS AND PRECAUTIONS

- 5.1 Interstitial Lung Disease (ILD)
- 5.2 Renal failure
- 5.3 Hepatotoxicity with or without Hepatic Impairment
- 5.4 Gastrointestinal Perforation
- 5.5 Bullous and Exfoliative Skin Disorders
- 5.6 Cerebrovascular Accident
- 5.7 Microangiopathic Hemolytic Anemia with Thrombocytopenia
- 5.8 Ocular Disorders
- 5.9 Hemorrhage in Patients Taking Warfarin
- 5.10 Embryo-fetal Toxicity

### 6 ADVERSE REACTIONS

- 6.1 Clinical Trials Safety Experience
- 6.2 Post-Marketing Experience

### 7 DRUG INTERACTIONS

### 8 USE IN SPECIFIC POPULATIONS

- 8.1 Pregnancy
- 8.2 Lactation
- 8.3 Females and Males of Reproductive Potential
- 8.4 Pediatric Use

8.5 Geriatric Use	
8.6 Hepatic Impairment	
10 OVERDOSAGE	
11 DESCRIPTION	
12 CLINICAL PHARMACOLOGY	
12.1 Mechanism of Action	
12.3 Pharmacokinetics	
13 NONCLINICAL TOXICOLOGY	
13.1 Carcinogenesis, Mutagenesis, Impairment of Fertility	
14 CLINICAL STUDIES	
14.1 Non-Small Cell Lung Cancer (NSCLC) – First-Line Treatment of Patients with EGFR Mutations	
14.2 NSCLC -Lack of Efficacy of Erlotinib in Maintenance Treatment of Patients without EGFR Mutations	
14.3 NSCLC – Maintenance Treatment or Second/Third Line Treatment	
14.4 NSCLC – Lack of Efficacy of Erlotinib tablets Administered Concurrently with Chemotherapy	
14.5 Pancreatic Cancer - Erlotinib tablets Administered Concurrently with Gemcitabine	
16 HOW SUPPLIED/STORAGE AND HANDLING	

\* Sections or subsections omitted from the full prescribing information are not listed.

---

## FULL PRESCRIBING INFORMATION

### 1. INDICATIONS AND USAGE

#### 1.1 Non-Small Cell Lung Cancer (NSCLC)

Erlotinib Tablets was indicated for:

- The treatment of patients with metastatic non-small cell lung cancer (NSCLC) whose tumors have epidermal growth factor receptor (EGFR) exon 19 deletions or exon 21 (L858R) substitution mutations as detected by an FDA-approved test receiving first-line, maintenance, or second or greater line treatment after progression following at least one prior chemotherapy regimen [*see Clinical Studies (14.1, 14.3)*].

Limitations of use:

- Safety and efficacy of erlotinib have not been established in patients with NSCLC whose tumors have other EGFR mutations [*see Clinical Studies (14.1, 14.2)*].
- Erlotinib tablet is not recommended for use in combination with platinum-based chemotherapy [*see Clinical Studies (14.4)*].

#### 1.2 Pancreatic Cancer

Erlotinib tablet in combination with gemcitabine is indicated for the first-line treatment of patients with locally advanced, unresectable or metastatic pancreatic cancer [*see Clinical Studies (14.5)*].

## 2 DOSAGE AND ADMINISTRATION

### 2.1 Selection of Patients with Metastatic NSCLC

Select patients for the treatment of metastatic NSCLC with erlotinib tablets based on the presence of

EGFR exon 19 deletions or exon 21 (L858R) substitution mutations in tumor or plasma specimens [See *Clinical Studies (14.1, 14.2)*]. If these mutations are not detected in a plasma specimen, test tumor tissue if available. Information on FDA-approved tests for the detection of EGFR mutations in NSCLC is available at: <http://www.fda.gov/CompanionDiagnostics>.

## 2.2 Recommended Dose – NSCLC

The recommended daily dose of erlotinib tablets for NSCLC is 150 mg taken on an empty stomach, i.e., at least one hour before or two hours after the ingestion of food. Treatment should continue until disease progression or unacceptable toxicity occurs.

## 2.3 Recommended Dose – Pancreatic Cancer

The recommended daily dose of erlotinib tablets for pancreatic cancer is 100 mg taken once daily in combination with gemcitabine. Take erlotinib tablet on an empty stomach, i.e., at least one hour before or two hours after the ingestion of food. Treatment should continue until disease progression or unacceptable toxicity occurs [see *Clinical Studies (14.5)*].

## 2.4 Dose Modifications

### Adverse Reactions

Pulmonary†	Interstitial Lung Disease (ILD)	Discontinue Erlotinib tablet
	During diagnostic evaluation for possible ILD	Withhold Erlotinib tablet *
Hepatic†	Severe hepatic toxicity that does not improve significantly or resolve within three weeks	Discontinue Erlotinib tablets
	In patients with pre-existing hepatic impairment or biliary obstruction for doubling of bilirubin or tripling of transaminases values over baseline	Withhold Erlotinib tablet* and consider discontinuation
	In patients without pre-existing hepatic impairment for total bilirubin levels greater than 3 times the upper limit of normal or transaminases greater than 5 times the upper limit of normal	Withhold Erlotinib tablet* and consider discontinuation
Renal†	For severe (CTCAE grade 3 to 4) renal toxicity	Withhold Erlotinib tablet* and consider discontinuation
Gastrointestinal†	Gastrointestinal perforation	Discontinue Erlotinib tablet
	For persistent severe diarrhea not responsive to medical management (e.g., loperamide)	Withhold Erlotinib tablet*
Skin†	Severe bullous, blistering or exfoliating skin conditions	Discontinue Erlotinib tablet
	For severe rash not responsive to medical management	Withhold Erlotinib tablet*
	Corneal perforation or severe ulceration	Discontinue Erlotinib tablet
Ocular†	For keratitis of (NCI-CTC version 4.0) grade 3-4 or for grade 2 lasting more than 2 weeks	Withhold Erlotinib tablet*
	For acute/worsening ocular disorders such as eye pain	Withhold Erlotinib tablet* and consider discontinuation

### Drug Interactions

CYP3A4 inhibitors‡	If severe reactions occur with concomitant use of strong CYP3A4 inhibitors [such as atazanavir, clarithromycin, indinavir, itraconazole, ketoconazole, nefazodone, nelfinavir, ritonavir, saquinavir, telithromycin, troleandomycin (TAO), voriconazole, or grapefruit or grapefruit juice] or when using concomitantly with an inhibitor of both CYP3A4 and CYP1A2 (e.g., ciprofloxacin)	Reduce erlotinib by 50 mg decrements; avoid concomitant use if possible

CYP3A4 inducers†	Concomitant use with CYP3A4 inducers, such as rifampin, rifabutin, rifapentine, phenytoin, carbamazepine, phenobarbital, or St. John's Wort	Increase erlotinib by 50 mg increments at 2-week intervals to a maximum of 450 mg as tolerated. Avoid concomitant use if possible
Concurrent Cigarette Smoking ‡§	Concurrent cigarette smoking	Increase erlotinib by 50 mg increments at 2-week intervals to a maximum of 300 mg. Immediately reduce the dose of erlotinib tablet to the recommended dose (150 mg or 100 mg daily) upon cessation of smoking
Proton Pump inhibitors	Separation of doses may not eliminate the interaction since proton pump inhibitors affect the pH of the upper GI tract for an extended period	Avoid concomitant use if possible
H <sub>2</sub> -receptor antagonists	If treatment with an H <sub>2</sub> -receptor antagonist such as ranitidine is required, separate dosing.	Erlotinib tablet must be taken 10 hours after the H <sub>2</sub> -receptor antagonist dosing and at least 2 hours before the next dose of the H <sub>2</sub> receptor antagonist
Antacids	The effect of antacids on erlotinib pharmacokinetics has not been evaluated.	The antacid dose and the erlotinib dose should be separated by several hours, if an antacid is necessary

† For additional information see *Warnings and Precautions* (5).

\* Reduce erlotinib by 50 mg decrements when restarting therapy following withholding treatment for a dose-limiting toxicity that has resolved to baseline or grade ≤ 1.

‡ For additional information see *Drug Interactions* (7).

§ For additional information see *Clinical Pharmacology* (12.3).

### 3 DOSAGE FORMS AND STRENGTHS

25 mg Tablets: White to off white round, biconvex film-coated tablets, debossed with “S13” on one side and plain on other side.

100 mg Tablets: White to off white round, biconvex film-coated tablets, debossed with “S12” on one side and plain on other side.

150 mg Tablets: White to off white round, biconvex film-coated tablets, debossed with “S11” on one side and plain on other side.

### 4 CONTRAINDICATIONS

None

### 5 WARNINGS AND PRECAUTIONS

#### 5.1 Interstitial Lung Disease (ILD)

Cases of serious ILD, including fatal cases, can occur with erlotinib tablets treatment. The overall incidence of ILD in approximately 32,000 erlotinib tablets-treated patients in uncontrolled studies and

studies with concurrent chemotherapy was approximately 1.1%. In patients with ILD, the onset of symptoms was between 5 days to more than 9 months (median 39 days) after initiating erlotinib tablets therapy.

Withhold erlotinib tablets for acute onset of new or progressive unexplained pulmonary symptoms such as dyspnea, cough, and fever pending diagnostic evaluation. If ILD is confirmed, permanently discontinue erlotinib tablets [see *Dosage and Administration* (2.4)].

## 5.2 Renal failure

Hepatorenal syndrome, severe acute renal failure including fatal cases, and renal insufficiency can occur with erlotinib tablet treatment. Renal failure may arise from exacerbation of underlying baseline hepatic impairment or severe dehydration. The pooled incidence of severe renal impairment in the 3 monotherapy lung cancer studies was 0.5% in the erlotinib tablets arms and 0.8% in the control arms. The incidence of renal impairment in the pancreatic cancer study was 1.4% in the erlotinib tablet plus gemcitabine arm and 0.4% in the control arm. Withhold erlotinib tablet in patients developing severe renal impairment until renal toxicity is resolved. Perform periodic monitoring of renal function and serum electrolytes during erlotinib tablet treatment [see *Adverse Reactions* (6.1) and *Dosage and Administration* (2.4)].

## 5.3 Hepatotoxicity with or without Hepatic Impairment

Hepatic failure and hepatorenal syndrome, including fatal cases, can occur with erlotinib tablet treatment in patients with normal hepatic function; the risk of hepatic toxicity is increased in patients with baseline hepatic impairment. In clinical studies where patients with moderate to severe hepatic impairment were excluded, the pooled incidence of hepatic failure in the 3 monotherapy lung cancer studies was 0.4% in the erlotinib tablet arms and 0% in the control arms. The incidence of hepatic failure in the pancreatic cancer study was 0.4% in the erlotinib tablet plus gemcitabine arm and 0.4% in the control arm. In a pharmacokinetic study in 15 patients with moderate hepatic impairment (Child-Pugh B) associated with significant liver tumor burden, 10 of these 15 patients died within 30 days of the last erlotinib tablet dose. One patient died from hepatorenal syndrome, 1 patient died from rapidly progressing liver failure and the remaining 8 patients died from progressive disease. Six out of the 10 patients who died had baseline total bilirubin > 3 x ULN.

Perform periodic liver testing (transaminases, bilirubin, and alkaline phosphatase) during treatment with erlotinib tablets. Increased frequency of monitoring of liver function is required for patients with pre-existing hepatic impairment or biliary obstruction. Withhold erlotinib tablets in patients without pre-existing hepatic impairment for total bilirubin levels greater than 3 times the upper limit of normal or transaminases greater than 5 times the upper limit of normal. Withhold erlotinib tablets in patients with pre-existing hepatic impairment or biliary obstruction for doubling of bilirubin or tripling of transaminases values over baseline. Discontinue erlotinib tablets in patients whose abnormal liver tests meeting the above criteria do not improve significantly or resolve within three weeks [see *Dosage and Administration* (2.4) and *Clinical Pharmacology* (12.3)].

## 5.4 Gastrointestinal Perforation

Gastrointestinal perforation, including fatal cases, can occur with erlotinib tablets treatment. Patients receiving concomitant anti-angiogenic agents, corticosteroids, NSAIDs, or taxane-based chemotherapy, or who have prior history of peptic ulceration or diverticular disease may be at increased risk of perforation [see *Adverse Reactions* (6.1, 6.2)]. The pooled incidence of gastrointestinal perforation in the 3 monotherapy lung cancer studies was 0.2% in the erlotinib tablets arms and 0.1% in the control arms. The incidence of gastrointestinal perforation in the pancreatic cancer study was 0.4% in the erlotinib tablets plus gemcitabine arm and 0% in the control arm. Permanently discontinue erlotinib tablets in patients who develop gastrointestinal perforation [see *Dosage and Administration* (2.4)].

## 5.5 Bullous and Exfoliative Skin Disorders

Bullous, blistering and exfoliative skin conditions, including cases suggestive of Stevens-Johnson syndrome/toxic epidermal necrolysis, which in some cases were fatal, can occur with erlotinib tablets treatment [see *Adverse Reactions* (6.1, 6.2)]. The pooled incidence of bullous and exfoliative skin disorders in the 3 monotherapy lung cancer studies was 1.2% in the erlotinib tablets arms and 0% in the control arms. The incidence of bullous and exfoliative skin disorders in the pancreatic cancer study was 0.4% in the erlotinib tablets plus gemcitabine arm and 0% in the control arm. Discontinue erlotinib tablets treatment if the patient develops severe bullous, blistering or exfoliating conditions [see *Dosage and Administration* (2.4)].

## **5.6 Cerebrovascular Accident**

In the pancreatic carcinoma trial, seven patients in the erlotinib tablets/gemcitabine group developed cerebrovascular accidents (incidence: 2.5%). One of these was hemorrhagic and was the only fatal event. In comparison, in the placebo/gemcitabine group there were no cerebrovascular accidents. The pooled incidence of cerebrovascular accident in the 3 monotherapy lung cancer studies was 0.6% in the erlotinib tablets arms and not higher than that observed in the control arms.

## **5.7 Microangiopathic Hemolytic Anemia with Thrombocytopenia**

The pooled incidence of microangiopathic hemolytic anemia with thrombocytopenia in the 3 monotherapy lung cancer studies was 0% in the erlotinib tablets arms and 0.1% in the control arms. The incidence of microangiopathic hemolytic anemia with thrombocytopenia in the pancreatic cancer study was 1.4% in the erlotinib tablets plus gemcitabine arm and 0% in the control arm.

## **5.8 Ocular Disorders**

Decreased tear production, abnormal eyelash growth, keratoconjunctivitis sicca or keratitis can occur with erlotinib tablets treatment and can lead to corneal perforation or ulceration [see *Adverse Reactions* (6.1) and (6.2)]. The pooled incidence of ocular disorders in the 3 monotherapy lung cancer studies was 17.8% in the erlotinib tablets arms and 4% in the control arms. The incidence of ocular disorders in the pancreatic cancer study was 12.8% in the erlotinib tablets plus gemcitabine arm and 11.4% in the control arm. Interrupt or discontinue erlotinib tablets therapy if patients present with acute or worsening ocular disorders such as eye pain [see *Dosage and Administration* (2.4)].

## **5.9 Hemorrhage in Patients Taking Warfarin**

Severe and fatal hemorrhage associated with International Normalized Ratio (INR) elevations can occur when erlotinib tablets and warfarin are administered concurrently. Regularly monitor prothrombin time and INR during erlotinib tablets treatment in patients taking warfarin or other coumarin-derivative anticoagulants [see *Adverse Reactions* (6.1) and *Drug Interactions* (7)].

## **5.10 Embryo-fetal Toxicity**

Based on animal data and its mechanism of action, erlotinib tablets can cause fetal harm when administered to a pregnant woman. When given during organogenesis, erlotinib administration resulted in embryo-fetal lethality and abortion in rabbits at exposures approximately 3 times the exposure at the recommended human daily dose of 150 mg. Advise pregnant women of the potential risk to a fetus.

Advise females of reproductive potential to use effective contraception during therapy and for one month after the last dose of erlotinib tablets [see *Use in Specific Populations* (8.1) and (8.3), *Clinical Pharmacology* (12.1)].

# **6 ADVERSE REACTIONS**

The following serious adverse reactions, which may include fatalities, are discussed in greater detail in other sections of the labeling:

- Interstitial Lung Disease (ILD) [see *Warnings and Precautions* (5.1)]

- Renal Failure [see Warnings and Precautions (5.2)]
- Hepatotoxicity with or without Hepatic Impairment [see Warnings and Precautions (5.3)]
- Gastrointestinal Perforation [see Warnings and Precautions (5.4)]
- Bullous and Exfoliative Skin Disorders [see Warnings and Precautions (5.5)]
- Cerebrovascular Accident [see Warnings and Precautions (5.6)]
- Microangiopathic Hemolytic Anemia with Thrombocytopenia [see Warnings and Precautions (5.7)]
- Ocular Disorders [see Warnings and Precautions (5.8)]
- Hemorrhage in Patients Taking Warfarin [see Warnings and Precautions (5.9)]

## 6.1 Clinical Trials Safety Experience

Because clinical trials are conducted under widely varying conditions, adverse reaction rates observed in the clinical trials of a drug cannot be directly compared to rates in the clinical trials of another drug and may not reflect the rates observed in practice.

Safety evaluation of erlotinib tablet is based on more than 1200 cancer patients who received erlotinib tablet as monotherapy, more than 300 patients who received erlotinib tablet 100 or 150 mg plus gemcitabine, and 1228 patients who received erlotinib tablet concurrently with other chemotherapies. The most common adverse reactions with erlotinib tablet are rash and diarrhea usually with onset during the first month of treatment. The incidences of rash and diarrhea from clinical studies of erlotinib tablet for the treatment of NSCLC and pancreatic cancer were 70% for rash and 42% for diarrhea.

### Non-Small Cell Lung Cancer

#### *First-Line Treatment of Patients with EGFR Mutations*

The most frequent ( $\geq 30\%$ ) adverse reactions in erlotinib tablets-treated patients were diarrhea, asthenia, rash, cough, dyspnea, and decreased appetite. In erlotinib tablets-treated patients the median time to onset of rash was 15 days and the median time to onset of diarrhea was 32 days.

The most frequent Grade 3-4 adverse reactions in erlotinib tablets-treated patients were rash and diarrhea.

Dose interruptions or reductions due to adverse reactions occurred in 37% of erlotinib tablets-treated patients, and 14.3% of erlotinib tablets-treated patients discontinued therapy due to adverse reactions. In erlotinib tablets-treated patients, the most frequently reported adverse reactions leading to dose modification were rash (13%), diarrhea (10%), and asthenia (3.6%).

Common adverse reactions in Study 1, occurring in at least 10% of patients who received erlotinib tablets or chemotherapy and an increase in  $\geq 5\%$  in the erlotinib tablets-treated group, are graded by National Cancer Institute Common Toxicity Criteria for Adverse Events version

3.0 (NCI-CTCAE v3.0) Grade in Table 1. The median duration of erlotinib tablets treatment was 9.6 months in Study 1.

**Table 1: Adverse Reactions with an Incidence Rate  $\geq 10\%$  and an Increase of  $\geq 5\%$  in the erlotinib tablets-Treated Group (Study 1)**

Adverse Reaction	Erlotinib Tablets N = 84		Chemotherapy† N = 83	
	All Grades %	Grades 3-4%	All Grades %	Grades 3-4%
Rash ‡	85	14	5	0
Diarrhea	62	5	21	1
Cough	48	1	40	0
Dyspnea	45	8	30	4
Dry skin	21	1	2	0



Back pain	19	2	5	0
Chest pain	18	1	12	0
Conjunctivitis	18	0	0	0
Mucosal inflammation	18	1	6	0
Pruritus	16	0	1	0
Paronychia	14	0	0	0
Arthralgia	13	1	6	1
Musculoskeletal pain	11	1	1	0

<sup>†</sup>Platinum-based chemotherapy (cisplatin or carboplatin with gemcitabine or docetaxel).

<sup>‡</sup>Rash as a composite term includes rash, acne, folliculitis, erythema, acneiform dermatitis, dermatitis, palmar-plantar erythrodysesthesia syndrome, exfoliative rash, erythematous rash, rash pruritic, skin toxicity, eczema, follicular rash, skin ulcer.

Hepatic Toxicity: One erlotinib-treated patient experienced fatal hepatic failure and four additional patients experienced grade 3-4 liver test abnormalities in Study 1 [ *see Warnings and Precautions (5.3)*].

#### *Maintenance Treatment*

Adverse reactions, regardless of causality, that occurred in at least 3% of patients treated with single-agent erlotinib tablets at 150 mg and at least 3% more often than in the placebo group in the randomized maintenance trial (Study 3) are summarized by NCI-CTCAE v3.0 Grade in Table 2.

The most common adverse reactions in patients receiving single-agent erlotinib tablets 150 mg were rash and diarrhea. Grade 3-4 rash and diarrhea occurred in 9% and 2%, respectively, in erlotinib tablets-treated patients. Rash and diarrhea resulted in study discontinuation in 1% and 0.5% of erlotinib tablets-treated patients, respectively. Dose reduction or interruption for rash and diarrhea was needed in 5% and 3% of patients, respectively. In erlotinib tablets-treated patients the median time to onset of rash was 10 days, and the median time to onset of diarrhea was 15 days.

**Table 2: NSCLC Maintenance Study: Adverse Reactions Occurring with an Incidence Rate  $\geq$  10% and an Increase of  $\geq$  5% in the Single-Agent Erlotinib Tablets Group compared to the Placebo Group (Study 3)**

Adverse Reaction	ERLOTINIB TABLETS N=433			PLACEBO N=445		
	Any Grade %	Grade 3 %	Grade 4 %	Any Grade %	Grade 3 %	Grade 4 %
Rash <sup>†</sup>	60	9	0	9	0	0
Diarrhea	20	2	0	4	0	0

<sup>†</sup> Rash as a composite term includes: rash, acne, acneiform dermatitis, skin fissures, erythema, papular rash, rash generalized, pruritic rash, skin exfoliation, urticaria, dermatitis, eczema, exfoliative rash, exfoliative dermatitis, furuncle, macular rash, pustular rash, skin hyperpigmentation, skin reaction, skin ulcer.

Liver test abnormalities including ALT elevations were observed at Grade 2 or greater severity in 3% of erlotinib tablets-treated patients and 1% of placebo-treated patients. Grade 2 and above bilirubin elevations were observed in 5% of erlotinib tablets patients and in  $< 1\%$  in the placebo group [ *see Dosage and Administration (2.4) and Warnings and Precautions (5.3)*].

#### *Second/Third Line Treatment*

Adverse reactions, regardless of causality, that occurred in at least 10% of patients treated with single-agent erlotinib tablets at 150 mg and at least 5% more often than in the placebo group in the randomized trial of patients with NSCLC are summarized by NCI-CTC v2.0 Grade in Table 3.

The most common adverse reactions in this patient population were rash and diarrhea. Grade 3-4 rash and diarrhea occurred in 9% and 6%, respectively, in erlotinib tablets -treated patients. Rash and diarrhea each resulted in study discontinuation in 1% of erlotinib tablets -treated patients. Six percent and 1% of patients needed dose reduction for rash and diarrhea, respectively. The median time to onset of rash was 8 days, and the median time to onset of diarrhea was 12 days.

**Table 3: NSCLC 2<sup>nd</sup>/3<sup>rd</sup> Line Study: Adverse Reactions Occurring with an Incidence Rate  $\geq$  10% and an Increase of  $\geq$  5% in the Single-Agent Erlotinib Tablets Group Compared to the Placebo Group (Study 4)**

Adverse Reaction	ERLOTINIB TABLETS 150mg N=485			PLACEBO N=242		
	Any Grade %	Grade 3 %	Grade 4 %	Any Grade %	Grade 3 %	Grade 4 %
Rash †	75	8	<1	17	0	0
Diarrhea	54	6	<1	18	<1	0
Anorexia	52	8	1	38	5	<1
Fatigue	52	14	4	45	16	4
Dyspnea	41	17	11	35	15	11
Nausea	33	3	0	24	2	0
Infection	24	4	0	15	2	0
Stomatitis	17	<1	0	3	0	0
Pruritus	13	<1	0	5	0	0
Dry skin	12	0	0	4	0	0
Conjunctivitis	12	<1	0	2	<1	0
Keratoconjunctivitis sicca	12	0	0	3	0	0

†Rash as a composite term includes: rash, palmar-plantar erythrodysesthesia syndrome, acne, skin disorder, pigmentation disorder, erythema, skin ulcer, exfoliative dermatitis, papular rash, skin desquamation.

Liver function test abnormalities [including elevated alanine aminotransferase (ALT), aspartate aminotransferase (AST) and bilirubin] were observed in patients receiving single-agent erlotinib tablet 150 mg. These elevations were mainly transient or associated with liver metastases. Grade 2 [ $>2.5$ – $5.0$  x upper limit of normal (ULN)] ALT elevations occurred in 4% and  $< 1\%$  of erlotinib tablets and placebo treated patients, respectively. Grade 3 ( $>5.0$ – $20.0$  x ULN) elevations were not observed in erlotinib tablets-treated patients. Erlotinib tablets dosing should be interrupted or discontinued if changes in liver function are severe [see *Dosage and Administration* (2.4)].

#### Pancreatic Cancer - erlotinib tablets Administered Concurrently with Gemcitabine

This was a randomized, double-blind, placebo-controlled study of erlotinib tablets (150 mg or 100 mg daily) or placebo plus gemcitabine ( $1000 \text{ mg/m}^2$  by intravenous infusion) in patients with locally advanced, unresectable or metastatic pancreatic cancer (Study 5). The safety population comprised 282 patients in the erlotinib group (259 in the 100 mg cohort and 23 in the 150 mg cohort) and 280 patients in the placebo group (256 in the 100 mg cohort and 24 in the 150 mg cohort).

Adverse reactions that occurred in at least 10% of patients treated with erlotinib tablet 100 mg plus gemcitabine in the randomized trial of patients with pancreatic cancer (Study 5) were graded according to NCI-CTC v2.0 in Table 4.

The most common adverse reactions in pancreatic cancer patients receiving erlotinib tablet 100 mg plus gemcitabine were fatigue, rash, nausea, anorexia and diarrhea. In the erlotinib tablets plus gemcitabine arm, Grade 3-4 rash and diarrhea were each reported in 5% of patients. The median time to onset of rash and diarrhea was 10 days and 15 days, respectively. Rash and diarrhea each resulted in dose reductions in 2% of patients, and resulted in study discontinuation in up to 1% of patients receiving erlotinib tablet

plus gemcitabine. Severe adverse reactions ( $\geq$  Grade 3 NCI-CTC) in the erlotinib tablet plus gemcitabine group with incidences  $< 5\%$  included syncope, arrhythmias, ileus, pancreatitis, hemolytic anemia including microangiopathic hemolytic anemia with thrombocytopenia, myocardial infarction/ischemia, cerebrovascular accidents including cerebral hemorrhage, and renal insufficiency [see Warnings and Precautions (5)].

The 150 mg cohort was associated with a higher rate of certain class-specific adverse reactions including rash and required more frequent dose reduction or interruption.

**Table 4: Adverse Reactions Occurring with an Incidence Rate  $\geq 10\%$  and an Increase of  $\geq 5\%$  in erlotinib tablets-Treated Pancreatic Cancer Patients: 100 mg Cohort (Study 5)**

Adverse Reaction	Erlotinib + Gemcitabine 1000mg/m <sup>2</sup> IV N=259			Placebo + Gemcitabine 1000mg/m <sup>2</sup> IV N=256		
	Any Grade %	Grade 3 %	Grade 4 %	Any Grade %	Grade 3 %	Grade 4 %
Rash <sup>†</sup>	70	5	0	30	1	0
Diarrhea	48	5	$<1$	36	2	0
Decreased weight	39	2	0	29	$<1$	0
Infection *	39	13	3	30	9	2
Pyrexia	36	3	0	30	4	0
Stomatitis	22	$<1$	0	12	0	0
Depression	19	2	0	14	$<1$	0
Cough	16	0	0	11	0	0
Headache	15	$<1$	0	10	0	0

\* Infections as a composite term include infections with unspecified pathogens as well as bacterial (including chlamydial, rickettsial,

mycobacterial and mycoplasmal), parasitic (including helminthic, ectoparasitic and protozoal), viral and fungal infectious disorders.

<sup>†</sup> Rash as a composite term includes: rash, palmar-plantar erythrodysesthesia syndrome, pigmentation disorder, acneiform dermatitis, folliculitis,

photosensitivity reaction, Stevens-Johnson syndrome, urticaria, erythematous rash, skin disorder, skin ulcer.

Ten patients (4%) in the erlotinib/gemcitabine group and three patients (1%) in the placebo/gemcitabine group developed deep venous thrombosis. The overall incidence of grade 3 or 4 thrombotic events, including deep venous thrombosis was 11% for Erlotinib tablets plus gemcitabine and 9% for placebo plus gemcitabine.

The incidences of liver test abnormalities ( $\geq$  Grade 2) in Study 5 are provided in Table 5 [see Dosage and Administration (2.4) and Warnings and Precautions (5.3)].

**Table 5: Liver Test Abnormalities in Pancreatic Cancer Patients: 100 mg Cohort (Study 5)**

	Erlotinib + Gemcitabine 1000mg/m <sup>2</sup> IV N=259			Placebo + Gemcitabine 1000mg/m <sup>2</sup> IV N=256		
	Grade 2	Grade 3	Grade 4	Grade 2	Grade 3	Grade 4
Bilirubin	17%	10%	$<1\%$	11%	10%	3%
ALT	31%	13%	$<1\%$	22%	9%	0%
AST	24%	10%	$<1\%$	19%	9%	0%

## NSCLC and Pancreatic Indications: Selected Low Frequency Adverse Reactions

### Gastrointestinal Disorders

Cases of gastrointestinal bleeding (including fatalities) have been reported, some associated with concomitant warfarin or NSAID administration [see *Warnings and Precautions (5.9) and Drug Interactions (7)*]. These adverse reactions were reported as peptic ulcer bleeding (gastritis, gastroduodenal ulcers), hematemesis, hematochezia, melena and hemorrhage from possible colitis.

### **6.2 Post-Marketing Experience**

The following adverse reactions have been identified during post approval use of erlotinib tablets. Because these reactions are reported voluntarily from a population of uncertain size, it is not always possible to reliably estimate their frequency or establish a causal relationship to drug exposure.

*Musculoskeletal and Connective Tissue Disorders:* myopathy, including rhabdomyolysis, in combination with statin therapy

*Eye Disorders:* ocular inflammation including uveitis

## **7 DRUG INTERACTIONS**

### CYP3A4 Inhibitors

Co-administration of erlotinib tablets with a strong CYP3A4 inhibitor or a combined CYP3A4 and CYP1A2 inhibitor increased erlotinib exposure. Erlotinib is metabolized primarily by CYP3A4 and to a lesser extent by CYP1A2. Increased erlotinib exposure may increase the risk of exposure-related toxicity [see *Clinical Pharmacology (12.3)*].

Avoid co-administering erlotinib tablets with strong CYP3A4 inhibitors (e.g., boceprevir, clarithromycin, conivaptan, indinavir, itraconazole, ketoconazole, lopinavir/ritonavir, nefazodone, nelfinavir, posaconazole, ritonavir, saquinavir, telithromycin, voriconazole, grapefruit or grapefruit juice) or a combined CYP3A4 and CYP1A2 inhibitor (e.g., ciprofloxacin). Reduce the erlotinib tablets dosage when co-administering with a strong CYP3A4 inhibitor or a combined CYP3A4 and CYP1A2 inhibitor if co-administration is unavoidable [see *Dosage and Administration (2.4)*].

### CYP3A4 Inducers

Pre-treatment with a CYP3A4 inducer prior to erlotinib tablets decreased erlotinib exposure [see *Clinical Pharmacology (12.3)*]. Increase the erlotinib tablets dosage if co-administration with CYP3A4 inducers (e.g., carbamazepine, phenytoin, rifampin, rifabutin, rifapentine, phenobarbital and St. John's wort) is unavoidable [see *Dosage and Administration (2.4)*].

### CYP1A2 Inducers and Cigarette Smoking

Cigarette smoking decreased erlotinib exposure. Avoid smoking tobacco (CYP1A2 inducer) and avoid concomitant use of erlotinib tablets with moderate CYP1A2 inducers (e.g., teriflunomide, rifampin, or phenytoin). Increase the erlotinib tablets dosage in patients that smoke tobacco or when co-administration with moderate CYP1A2 inducers is unavoidable [see *Dosage and Administration (2.4) and Clinical Pharmacology (12.3)*].

### Drugs that Increase Gastric pH

Co-administration of erlotinib tablets with proton pump inhibitors (e.g., omeprazole) and H<sub>2</sub> receptor antagonists (e.g., ranitidine) decreased erlotinib exposure [see *Clinical Pharmacology (12.3)*]. For proton pump inhibitors, avoid concomitant use if possible. For H<sub>2</sub> receptor antagonists and antacids, modify the dosing schedule [see *Dosage and Administration (2.4)*]. Increasing the dose of erlotinib tablets when co-administered with gastric pH elevating agents is not likely to compensate for the loss of exposure.

### Anticoagulants

Interaction with coumarin-derived anticoagulants, including warfarin, leading to increased International Normalized Ratio (INR) and bleeding adverse reactions, which in some cases were fatal, have been reported in patients receiving erlotinib tablets. Regularly monitor prothrombin time or INR in patients taking coumarin-derived anticoagulants. Dose modifications of erlotinib tablets are not recommended [see *Warnings and Precautions (5.9) and Adverse Reactions (6.1)*].

## **8 USE IN SPECIFIC POPULATIONS**

### **8.1 Pregnancy**

#### Risk Summary

Based on animal data and its mechanism of action, erlotinib tablets can cause fetal harm when administered to a pregnant woman. Limited available data on use of erlotinib tablets in pregnant women are not sufficient to inform a risk of major birth defects or miscarriage. When given

during organogenesis, erlotinib administration resulted in embryo-fetal lethality and abortion in rabbits at exposures approximately 3 times the exposure at the recommended human daily dose of 150 mg. Advise pregnant women of the potential risk to a fetus.

In the U.S. general population, the estimated background risk of major birth defects and miscarriage in clinically recognized pregnancies is 2-4% and 15-20%, respectively.

#### Data

##### *Animal Data*

Erlotinib has been shown to cause maternal toxicity resulting in embryo-fetal lethality and abortion in rabbits when given during the period of organogenesis at doses that result in plasma drug concentrations approximately 3 times those achieved at the recommended dose in humans (AUCs at 150 mg daily dose). During the same period, there was no increase in the incidence of embryo-fetal lethality or abortion in rabbits or rats at doses resulting in exposures approximately equal to those in humans at the recommended daily dose. In an independent fertility study female rats treated with 30 mg/m<sup>2</sup>/day or 60 mg/m<sup>2</sup>/day (0.3 or 0.7 times the recommended daily dose, on a mg/m<sup>2</sup> basis) of erlotinib had an increase in early resorptions that resulted in a decrease in the number of live fetuses.

No teratogenic effects were observed in rabbits or rats dosed with erlotinib during organogenesis at doses up to 600 mg/m<sup>2</sup>/day in the rabbit (3 times the plasma drug concentration seen in humans at 150 mg/day) and up to 60 mg/m<sup>2</sup>/day in the rat (0.7 times the recommended dose of 150 mg/day on a mg/m<sup>2</sup> basis).

### **8.2 Lactation**

#### Risk Summary

There are no data on the presence of erlotinib in human milk, or the effects of erlotinib on the breastfed infant or on milk production. Because of the potential for serious adverse reactions in breastfed infants from erlotinib tablets, including interstitial lung disease, hepatotoxicity, bullous and exfoliative skin disorders, microangiopathic hemolytic anemia with thrombocytopenia, ocular disorders, and diarrhea. Advise a lactating woman not to breastfeed during treatment with erlotinib tablets and for 2 weeks after the final dose.

### **8.3 Females and Males of Reproductive Potential**

#### Contraception

##### *Females*

Erlotinib tablets can cause fetal harm when administered to a pregnant woman [see *Use in Specific Populations (8.1)*]. Advise females of reproductive potential to use effective contraception during

treatment with erlotinib tablets and for one month after the last dose of erlotinib tablets.

#### **8.4 Pediatric Use**

The safety and effectiveness of erlotinib tablets in pediatric patients have not been established.

In an open-label, multicenter trial, 25 pediatric patients (median age 14 years, range 3-20 years) with recurrent or refractory ependymoma were randomized (1:1) to erlotinib tablets or etoposide. Thirteen patients received erlotinib tablets at a dose of 85 mg/m<sup>2</sup>/day orally until disease progression, death, patient request, investigator decision to discontinue study drug, or intolerable toxicity. Four patients randomized to etoposide also received erlotinib tablets following disease progression. The trial was terminated prematurely for lack of efficacy; there were no objective responses observed in these 17 erlotinib tablets -treated patients.

No new adverse events were identified in the pediatric population.

Based on the population pharmacokinetics analysis conducted in 105 pediatric patients (2 to 21 years old) with cancer, the geometric mean estimates of CL/F/BSA (apparent clearance normalized to body surface area) were comparable across the three age groups: 2-6 years (n = 29), 7-16 years (n = 59), and 17-21 years (n = 17).

#### **8.5 Geriatric Use**

Of the 1297 subjects in clinical studies of erlotinib tablets for the treatment of NSCLC and pancreatic cancer 40% were 65 and older while 10% were 75 and older. No overall differences in safety or efficacy were observed between subjects 65 years and older and those younger than 65.

#### **8.6 Hepatic Impairment**

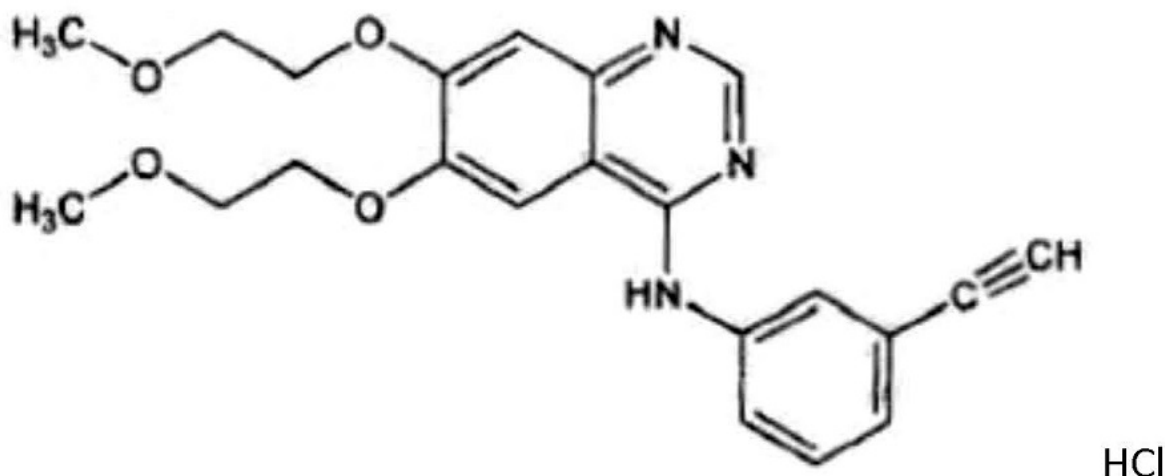
Hepatic failure and hepatorenal syndrome, including fatal cases, can occur with erlotinib tablets treatment in patients with normal hepatic function; the risk of hepatic toxicity is increased in patients with baseline hepatic impairment [*see Warnings and Precautions (5.3), Adverse Reactions (6.1, 6.2), and Dosage and Administration*]. Monitor patients with hepatic impairment (total bilirubin greater than upper limit of normal (ULN) or Child-Pugh A, B and C) during therapy with erlotinib tablets. Treatment with erlotinib tablets should be used with increased monitoring in patients with total bilirubin greater than 3 x ULN [*see Warnings and Precautions (5.3), Adverse Reactions (6.1, 6.2), and Dosage and Administration (2.4)*].

### **10 OVERDOSAGE**

Withhold erlotinib tablets in patients with an overdose or suspected overdose and institute symptomatic treatment.

### **11 DESCRIPTION**

Erlotinib a kinase inhibitor, is a quinazolinamine with the chemical name N-(3-ethynylphenyl)-6,7-bis(2-methoxyethoxy)-4-quinazolinamine Hydrochloride. Erlotinib contains erlotinib as the hydrochloride salt that has the following structural formula:



Erlotinib hydrochloride has the molecular formula  $C_{22}H_{23}N_3O_4 \cdot HCl$  and a molecular weight of 429.90. The molecule has a  $pK_a$  of 5.4. Erlotinib hydrochloride is slightly soluble in Dimethyl sulfoxide, Dimethyl formamide and Methanol.

Aqueous solubility of erlotinib hydrochloride is dependent on pH with increased solubility at a pH of less than 5 due to protonation of the secondary amine. Over the pH range of 1.4 to 9.6, maximal solubility of approximately 1.69 mg/mL occurs at a pH of approximately 2.

Erlotinib tablets for oral administration are available in three dosage strengths containing erlotinib hydrochloride (27.3 mg, 109.3 mg and 163.9 mg) equivalent to 25 mg, 100 mg and 150 mg erlotinib and the following inactive ingredients: micro crystalline cellulose, lactose monohydrate, sodium starch glycolate, sodium lauryl sulfate, magnesium stearate, and finished tablets are coated with opadry white[Y-5-7068] contains following ingredients hypromellose, hydroxypropyl cellulose, titanium dioxide, polyethylene glycol

## 12 CLINICAL PHARMACOLOGY

### 12.1 Mechanism of Action

Epidermal growth factor receptor (EGFR) is expressed on the cell surface of both normal and cancer cells. In some tumor cells signaling through this receptor plays a role in tumor cell survival and proliferation irrespective of EGFR mutation status. Erlotinib reversibly inhibits the kinase activity of EGFR, preventing autophosphorylation of tyrosine residues associated with the receptor and thereby inhibiting further downstream signaling. Erlotinib binding affinity for EGFR exon 19 deletion or exon 21 (L858R) mutations is higher than its affinity for the wild type receptor. Erlotinib inhibition of other tyrosine kinase receptors has not been fully characterized.

### 12.3 Pharmacokinetics

#### Absorption

Erlotinib is about 60% absorbed after oral administration. Peak plasma levels occur 4 hours after dosing.

#### *Effect of Food*

Food increased the bioavailability of erlotinib to approximately 100%.

#### Distribution:

Erlotinib is 93% protein bound to plasma albumin and alpha-1 acid glycoprotein (AAG).

Erlotinib has an apparent volume of distribution of 232 liters.

### Elimination

Erlotinib is eliminated with a median half-life of 36.2 hours in patients receiving the single-agent erlotinib tablets 2<sup>nd</sup>/3<sup>rd</sup> line regimen. Time to reach steady state plasma concentration would therefore be 7-8 days.

### *Metabolism*

Erlotinib is metabolized primarily by CYP3A4 and to a lesser extent by CYP1A2, and the extrahepatic isoform CYP1A1, *in vitro*.

### *Excretion*

Following a 100 mg oral dose, 91% of the dose was recovered: 83% in feces (1% of the dose as intact parent) and 8% in urine (0.3% of the dose as intact parent).

### Specific Populations

Neither age, body weight, nor gender had a clinically significant effect on the systemic exposure of erlotinib in NSCLC patients receiving single-agent erlotinib tablets for 2<sup>nd</sup>/3<sup>rd</sup> line treatment or for maintenance treatment, and in pancreatic cancer patients who received erlotinib plus gemcitabine. The pharmacokinetics of erlotinib tablets in patients with compromised renal function is unknown.

### *Patients with Hepatic Impairment*

*In vitro* and *in vivo* evidence suggest that erlotinib is cleared primarily by the liver. However, erlotinib exposure was similar in patients with moderately impaired hepatic function (Child-Pugh B) compared with patients with adequate hepatic function including patients with primary liver cancer or hepatic metastases.

### *Patients That Smoke Tobacco Cigarettes*

In a single-dose pharmacokinetics trial in healthy volunteers, cigarette smoking (moderate CYP1A2 inducer) increased erlotinib clearance and decreased erlotinib AUC<sub>0-inf</sub> by 64% (95% CI, 46-76%) in current smokers compared with former/never smokers. In a NSCLC trial, current smokers achieved erlotinib steady-state trough plasma concentrations which were approximately 2-fold less than the former smokers or patients who had never smoked. This effect was accompanied by a 24% increase in apparent erlotinib plasma clearance. In another study which was conducted in NSCLC patients who were current smokers, pharmacokinetic analyses at steady-state indicated a dose-proportional increase in erlotinib exposure when the erlotinib tablets dose was increased from 150 mg to 300 mg. [see Dosage and Administration (2.4), Drug Interactions (7) and Patient Counseling Information (17)].

### Drug Interaction Studies

Co-administration of gemcitabine had no effect on erlotinib plasma clearance.

### *CYP3A4 Inhibitors*

Co-administration with a strong CYP3A4 inhibitor, ketoconazole, increased erlotinib AUC by 67%. Co-administration with a combined CYP3A4 and CYP1A2 inhibitor, ciprofloxacin, increased erlotinib exposure [AUC] by 39%, and increased erlotinib maximum concentration [C<sub>max</sub>] by 17%. [see Dose Modifications (2.4), Drug Interactions (7)].

### *CYP3A4 Inducers*

Pre-treatment with the CYP3A4 inducer rifampicin, for 7-11 days prior to erlotinib tablets, decreased erlotinib AUC by 58% to 80% [see Dose Modifications (2.4), Drug Interactions (7)].

### *CYP1A2 Inducers or Smoking Tobacco*



See Specific Populations Section [see *Dose Modifications (2.4)*, *Drug Interactions (7)*].

#### *Drugs that Increase Gastric pH*

Erlotinib solubility is pH dependent and decreases as pH increases. When a proton pump inhibitor (omeprazole) was co-administered with erlotinib tablets the erlotinib exposure [AUC] was decreased by 46% and the erlotinib maximum concentration [ $C_{\max}$ ] was decreased by 61%. When erlotinib tablets was administered 2 hours following a 300 mg dose of an H-2 receptor antagonist (ranitidine), the erlotinib AUC was reduced by 33% and the erlotinib  $C_{\max}$  was reduced by 54%. When erlotinib tablets was administered with ranitidine 150 mg twice daily (at least 10 h after the previous ranitidine evening dose and 2 h before the ranitidine morning dose), the erlotinib AUC was decreased by 15% and the erlotinib  $C_{\max}$  was decreased by 17% [see *Dose Modifications (2.4)*, *Drug Interactions (7)*].

## 13 NONCLINICAL TOXICOLOGY

### 13.1 Carcinogenesis, Mutagenesis, Impairment of Fertility

Two-year carcinogenicity studies were conducted in mice and rats with erlotinib at oral doses of up to 60 mg/kg/day in mice, 5 mg/kg/day in female rats, and 10 mg/kg/day in male rats. The studies were negative for carcinogenic findings. Exposure in mice at the highest dose tested was approximately 10 times the exposure in humans at the erlotinib dose of 150 mg/day. The highest dose evaluated in male rats resulted in exposures that were twice those in humans and exposures at the highest tested dose in female rats were slightly lower than those in humans.

Erlotinib did not cause genetic damage in a series of *in vitro* assays (bacterial mutation, human lymphocyte chromosome aberration and mammalian cell mutation) and in the *in vivo* mouse bone marrow micronucleus test.

Erlotinib did not impair fertility in either male or female rats.

## 14 CLINICAL STUDIES

### 14.1 Non-Small Cell Lung Cancer (NSCLC) – First-Line Treatment of Patients with EGFR Mutations

#### Study 1

The safety and efficacy of erlotinib tablets as monotherapy for the first-line treatment of patients with metastatic NSCLC containing EGFR exon 19 deletions or exon 21 (L858R) substitution mutations was demonstrated in Study 1, a randomized, open-label, clinical trial conducted in Europe. One hundred seventy-four (174) White patients were randomized 1:1 to receive erlotinib 150 mg once daily until disease progression (n = 86) or four cycles of a standard platinum-based doublet chemotherapy (n = 88); standard chemotherapy regimens were cisplatin plus gemcitabine, cisplatin plus docetaxel, carboplatin plus gemcitabine, and carboplatin plus docetaxel. The main efficacy outcome measure was progression-free survival (PFS) as assessed by the investigator. Randomization was stratified by EGFR mutation (exon 19 deletion or exon 21 (L858R) substitution) and Eastern Cooperative Oncology Group Performance Status (ECOG PS) (0 vs. 1 vs. 2). EGFR mutation status for screening and enrollment of patients was determined by a clinical trials assay (CTA). Tumor samples from 134 patients (69 patients from the erlotinib arm and 65 patients from the chemotherapy arm) were tested retrospectively by the FDA-approved companion diagnostic, cobas<sup>®</sup> EGFR Mutation Test.

Baseline demographics of the overall study population were: female (72%), White (99%), age  $\geq$  65 years (51%), ECOG PS 1 (53%), with ECOG PS 0 (33%), and ECOG PS 2 (14%), current smoker (11%), past-smoker (20%), and never smoker (69%). The disease characteristics were 93% Stage IV and 7% Stage IIb with pleural effusion as classified by the American Joint Commission on Cancer (AJCC, 6<sup>th</sup> edition), 93% adenocarcinoma, 66% exon 19 mutation deletions and 34% exon 21 (L858R) point

mutation by CTA.

A statistically significant improvement in investigator-determined PFS (based on RECIST 1.0 or clinical progression) was demonstrated for patients randomized to erlotinib compared to those randomized to chemotherapy (see Table 6 and Figure 1). Similar results for PFS (based on RECIST 1.0) were observed for the subgroup evaluated by an independent-review committee (approximately 75% of patients evaluated in Study 1) and in the subgroup of 134 patients (77% of Study 1 population) with EGFR mutations confirmed by the cobas<sup>®</sup> EGFR Mutation Test.

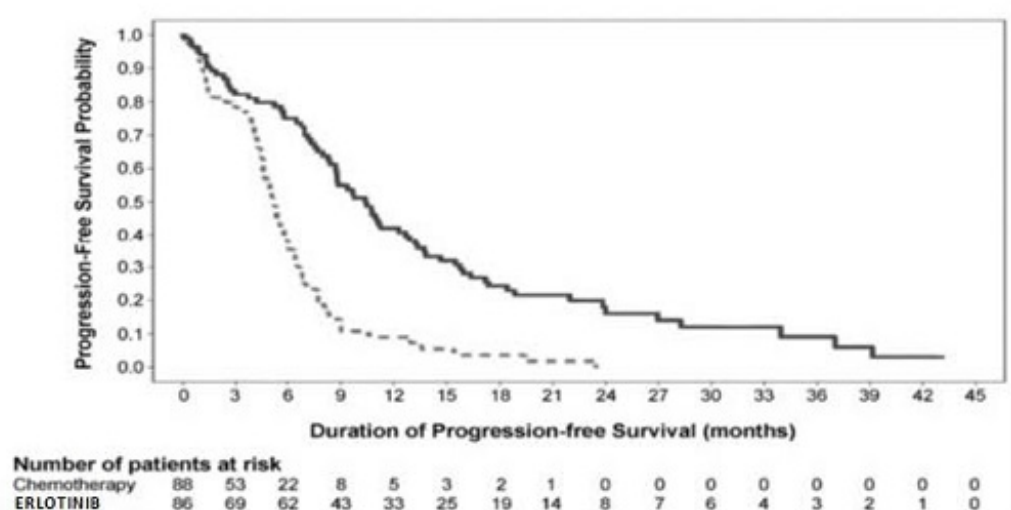
A protocol-specified analysis of overall survival (OS) conducted at the time of the final analysis of PFS showed no statistically significant difference between the erlotinib and chemotherapy arms. At the time of the data cut-off, 84% of patients in the chemotherapy arm had received at least one subsequent treatment, of whom 97% received an EGFR-tyrosine kinase inhibitor. In the erlotinib arm, 66% of patients had received at least one subsequent treatment.

**Table 6: Efficacy Results (Study 1)**

Efficacy Parameter	Erlotinib (N = 86)	Chemotherapy (N = 88)
<b>Progression-Free Survival</b>		
Number of Progressions or Deaths	71 (83%)	63 (72%)
Median PFS in Months (95% CI)	10.4 (8.7, 12.9)	5.2 (4.6, 6.0)
Hazard Ratio (95% CI) <sup>(1)</sup>	0.34 (0.23, 0.49)	
p-value (unstratified log-rank test)	< 0.001	
<b>Overall Survival</b>		
Number of Deaths (%)	55 (64%)	54 (61%)
Median OS in Months (95% CI)	22.9 (17.0, 26.8)	19.5 (17.3, 28.4)
Hazard Ratio (95% CI) <sup>1</sup>	0.93 (0.64, 1.35)	
<b>Objective Response</b>		
Objective Response Rate (95% CI)	65% (54.1%, 75.1%)	16% (9.0%, 25.3%)

<sup>(1)</sup> Unstratified Cox regression model.

**Figure 1: Kaplan-Meier Curves of Investigator-Assessed PFS in Study 1**



In exploratory subgroup analyses based on EGFR mutation subtype, the hazard ratio (HR) for PFS was 0.27 (95% CI 0.17 to 0.43) in patients with exon 19 deletions and 0.52 (95% CI 0.29 to 0.95) in patients with exon 21 (L858R) substitution. The HR for OS was 0.94 (95% CI 0.57 to 1.54) in the exon 19 deletion subgroup and 0.99 (95% CI 0.56 to 1.76) in the exon 21 (L858R) substitution subgroup.

## 14.2 NSCLC -Lack of Efficacy of Erlotinib in Maintenance Treatment of Patients without EGFR Mutations

Lack of efficacy of erlotinib tablets for the maintenance treatment of patients with NSCLC without EGFR activating mutations was demonstrated in Study 2. Study 2 was a multicenter, placebo-controlled, randomized trial of 643 patients with advanced NSCLC without an EGFR exon 19 deletion or exon 21 L858R mutation who had not experienced disease progression after four cycles of platinum-based chemotherapy. Patients were randomized 1:1 to receive erlotinib tablets 150 mg or placebo orally once daily (322 erlotinib tablets, 321 placebo) until disease progression or unacceptable toxicity. Following progression on initial therapy, patients were eligible to enter an open-label phase. Baseline characteristics were as follows: median age 61 years (35% age  $\geq$  65 years), 75% male, 77% White, 21% Asian, 28% ECOG PS 0, 72% ECOG PS 1, 16% never smokers, 58% current smokers, 57% adenocarcinoma, 35% squamous cell carcinoma, 22% stage IIIB disease not amenable to combined modality treatment, and 78% stage IV disease. Fifty percent of patients randomized to erlotinib tablets entered the open-label phase

and received chemotherapy, while 77% of patients randomized to placebo entered the open-label phase and received erlotinib tablets.

The main efficacy outcome was overall survival (OS). Median OS was 9.7 months in the erlotinib tablets arm and 9.5 months in the placebo arm; the hazard ratio for OS was 1.02 (95% CI 0.85, 1.22). Median PFS was 3.0 months in the erlotinib tablets arm and 2.8 months in the placebo arm; the hazard ratio for PFS was 0.94 (95% CI 0.80, 1.11).

## 14.3 NSCLC – Maintenance Treatment or Second/Third Line Treatment

Two randomized, double-blind, placebo-controlled trials, Studies 3 and 4, examined the efficacy and safety of erlotinib tablets administered to patients with metastatic NSCLC as maintenance therapy after initial treatment with chemotherapy (Study 3) or with disease progression following initial treatment with chemotherapy (Study 4). Determination of EGFR mutation status was not required for enrollment.

### Study 3

The efficacy and safety of erlotinib tablets as maintenance treatment of NSCLC were demonstrated in Study 3, a randomized, double-blind, placebo-controlled trial conducted in 26 countries, in 889 patients with metastatic NSCLC whose disease did not progress during first-line platinum-based chemotherapy. Patients were randomized 1:1 to receive erlotinib tablets 150 mg or placebo orally once daily (438 erlotinib tablets, 451 placebo) until disease progression or unacceptable toxicity. The primary objective of the study was to determine if the administration of erlotinib tablets after standard platinum-based chemotherapy in the treatment of NSCLC resulted in improved progression-free survival (PFS) when compared with placebo, in all patients or in patients with EGFR immunohistochemistry (IHC) positive tumors.

Baseline demographics of the overall study population were as follows: male (74%), age < 65 years (66%), ECOG PS 1 (69%), ECOG PS 0 (31%), white (84%), Asian (15%), current smoker (55%), past-smoker (27%), and never smoker (17%). Disease characteristics were as follows: Stage IV (75%), Stage IIIB with effusion (25%) as classified by AJCC (6<sup>th</sup> edition) with histologic subtypes of adenocarcinoma including bronchioalveolar (45%), squamous (40%) and large cell (5%); and EGFR IHC positive (70%), negative (14%), indeterminate (4%), and missing (12%).

**Table 7: Efficacy Results (Study 3): (ITT Population) <sup>1</sup>**

<b>Efficacy Parameter</b>	<b>Erlotinib (N = 438)</b>	<b>Placebo (N = 451)</b>
<b>Progression-Free Survival (PFS) based on investigator assessment</b>		
Number of Progressions or Deaths (%)	349 (80%)	400 (89%)
Median PFS in Months (95% CI)	2.8 (2.8, 3.1)	2.6 (1.9, 2.7)

Hazard Ratio (95% CI) <sup>(2)</sup>	0.71 (0.62, 0.82)	
p-value (stratified log-rank test) <sup>(2,3)</sup>	P < 0.001	
<b>Overall Survival (OS)</b>		
Number of Deaths	298 (68%)	350 (78%)
Median OS in Months (95% CI)	12.0 (10.6, 13.9)	11.0 (9.9, 12.1)
Hazard Ratio (95% CI) <sup>(2)</sup>	0.81 (0.70, 0.95)	
p-value (stratified log-rank test) <sup>(2,3)</sup>	0.0088	

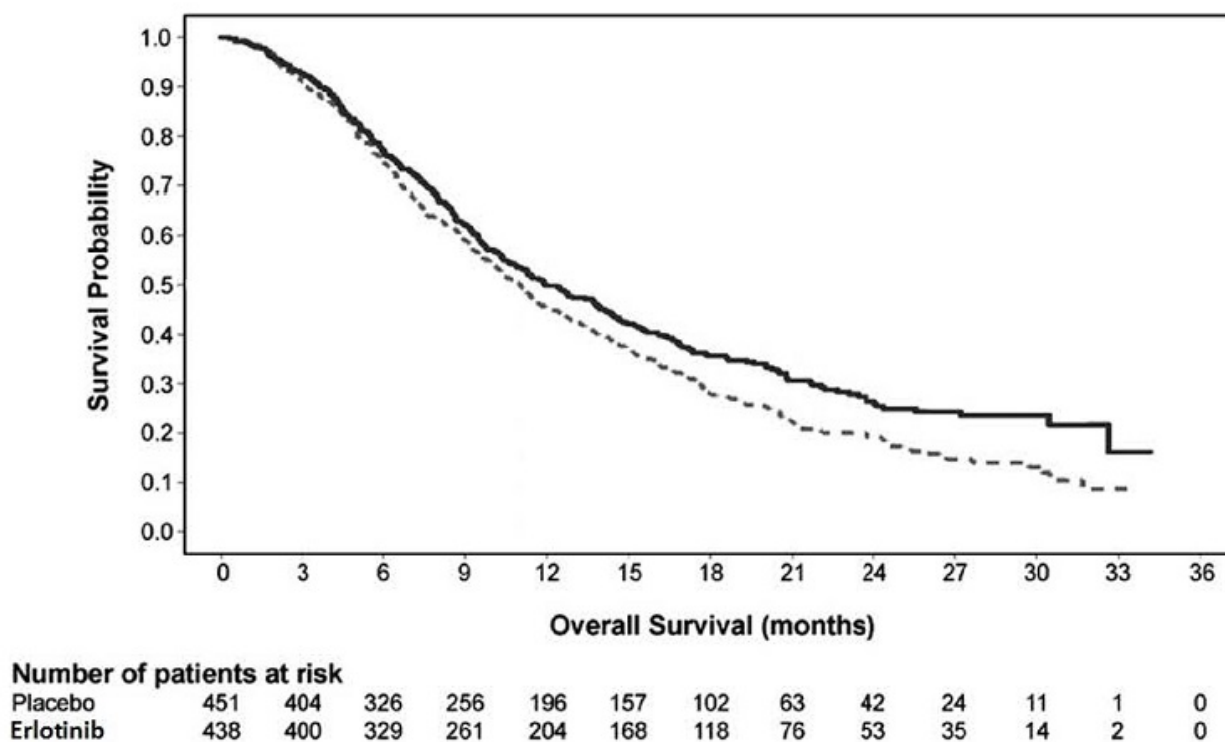
(1) Patients with PD prior to randomization were excluded from PFS and TTP analysis.

(2) Univariate Cox regression model.

(3) Unstratified log-rank test

Figure 2 depicts the Kaplan-Meier Curves for Overall Survival (ITT Population).

**Figur 2: Kaplan-Meier Curves for Overall Survival of patients by Treatment Group in Study 3**



Note: HR is from a univariate Cox regression model.

#### Study 4

The efficacy and safety of single-agent erlotinib tablets was assessed in Study 4, a randomized, double blind, placebo-controlled trial in 731 patients with locally advanced or metastatic NSCLC after failure of at least one chemotherapy regimen. Patients were randomized 2:1 to receive erlotinib tablets 150 mg or placebo (488 erlotinib tablets, 243 placebo) orally once daily until disease progression or unacceptable toxicity. Efficacy outcome measures included overall survival, response rate, and progression-free survival (PFS). Duration of response was also examined. The primary endpoint was survival. The study was conducted in 17 countries.

Baseline demographics of the overall study population were as follows: male (65%), White (78%), Asian (12%), Black (4%), age < 65 years (62%), ECOG PS 1 (53%), ECOG PS 0 (13%), ECOG PS 2

(25%), ECOG PS 3 (9%), current or ex-smoker (75%), never smoker (20%), and exposure to prior platinum therapy (93%). Tumor characteristics were as follows: adenocarcinoma (50%), squamous (30%), undifferentiated large cell (9%), and mixed non-small cell (2%).

The results of the study are shown in Table 8.

**Table 8: Efficacy Results (Study 4)**

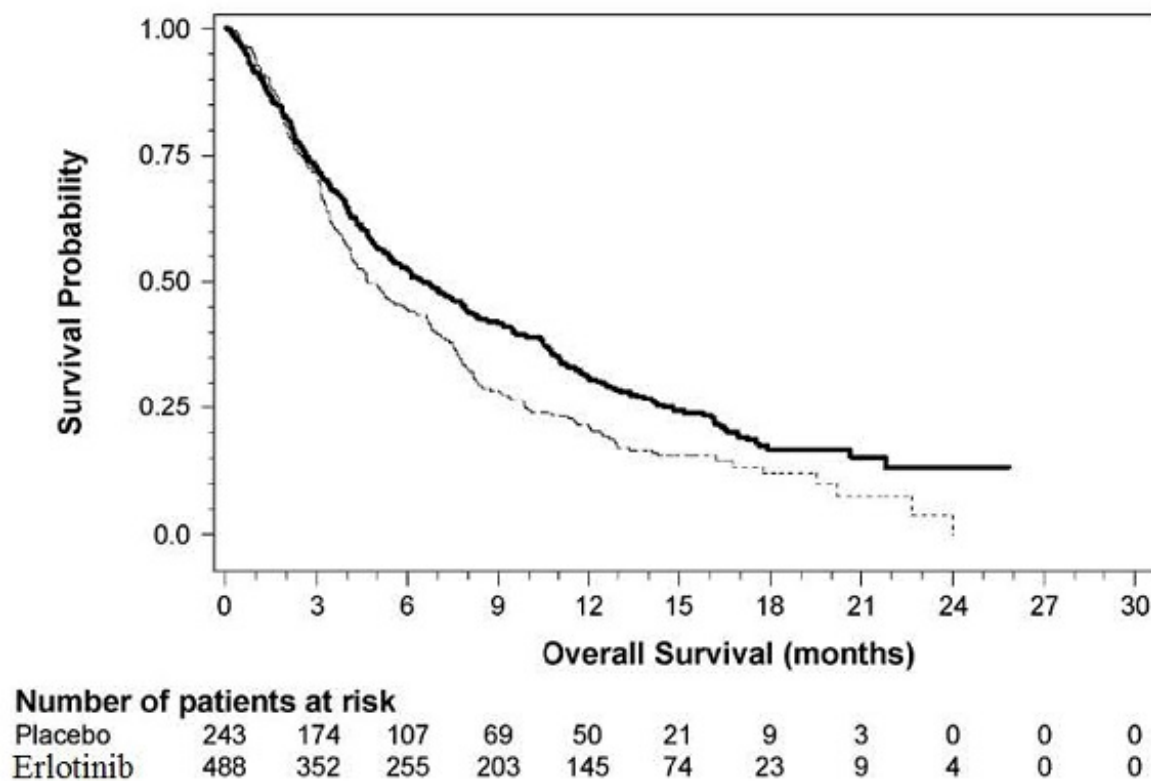
Efficacy Parameter	Erlotinib (N = 488)	Placebo (N = 243)
Overall Survival (OS)		
Number of Deaths	378 (77%)	209 (86%)
Median OS in Months (95% CI)	6.7 (5.5, 7.8)	4.7 (4.1, 6.3)
Hazard Ratio (95% CI) <sup>(1)</sup>	0.73 (0.61, 0.86)	
p-value (stratified log-rank test) <sup>(2)</sup>	p < 0.001	
Progression-Free Survival (PFS)		
Number of Progression or Deaths (%)	402 (82%)	211 (87%)
Median PFS in Months (95% CI)	2.3 (1.9, 3.3)	1.8 (1.8, 1.9)
Hazard Ratio (95% CI) <sup>1</sup>	0.59 (0.50, 0.70)	
Objective Response		
Objective Response Rate (95% CI)	8.9% (6.4, 12.0)	0.9% (0.1, 3.4)

(1) Cox regression model with the following covariates: ECOG performance status, number of prior regimens, prior platinum, best response to prior chemotherapy.

(2) Two-sided log-rank test stratified by ECOG performance status, number of prior regimens, prior platinum, best response to prior chemotherapy.

Figure 3 depicts the Kaplan-Meier curves for overall survival.

**Figur 3: Kaplan-Meier Curves for Overall Survival of patients by Treatment Group in Study 4**



#### 14.4 NSCLC – Lack of Efficacy of Erlotinib tablets Administered Concurrently with Chemotherapy

Results from two, multicenter, placebo-controlled, randomized, trials in over 1000 patients conducted in first-line patients with locally advanced or metastatic NSCLC showed no clinical benefit with the concurrent administration of erlotinib tablets with platinum-based chemotherapy [carboplatin and paclitaxel (Erlotinib tablets, N = 526) or gemcitabine and cisplatin (Erlotinib tablets, N = 580)].

#### 14.5 Pancreatic Cancer - Erlotinib tablets Administered Concurrently with Gemcitabine

The efficacy and safety of Erlotinib tablets in combination with gemcitabine as a first-line treatment was assessed in Study 5, a randomized, double-blind, placebo-controlled trial in 569 patients with locally advanced, unresectable or metastatic pancreatic cancer. Patients were randomized 1:1 to receive Erlotinib tablets (100 mg or 150 mg) or placebo once daily on a continuous schedule plus gemcitabine by intravenous infusion (1000 mg/m<sup>2</sup>, Cycle 1 -Days 1, 8, 15, 22, 29, 36 and 43 of an 8-week cycle; Cycle 2 and subsequent cycles -Days 1, 8 and 15 of a 4-week cycle [the approved dose and schedule for pancreatic cancer, see the gemcitabine package insert]). Erlotinib tablets or placebo was taken orally once daily until disease progression or unacceptable toxicity. The primary endpoint was survival. Secondary endpoints included response rate, and progression-free survival (PFS). Duration of response was also examined. The study was conducted in 18 countries. A total of 285 patients were randomized to receive gemcitabine plus erlotinib tablets (261 patients in the 100 mg cohort and 24 patients in the 150 mg cohort) and 284 patients were randomized to receive gemcitabine plus placebo (260 patients in the 100 mg cohort and 24 patients in the 150 mg cohort). Too few patients were treated in the 150 mg cohort to draw conclusions.

In the 100 mg cohort, baseline demographics of the overall study population were as follows: male (52%), white (88%), Asian (7%), black (2%), age < 65 years (53%), ECOG PS 1 (51%), ECOG PS 0 (32%), and ECOG PS 2 (17%). There was a slightly larger proportion of females in the erlotinib tablets arm (51%) compared with the placebo arm (44%). The median time from initial diagnosis to randomization was approximately 1.0 month. The majority of the patients (76%) had distant metastases at

baseline and 24% had locally advanced disease.

The results of the study are shown in Table 9.

**Table 9: Efficacy Results: Erlotinib tablets 100 mg Cohort (Study 5)**

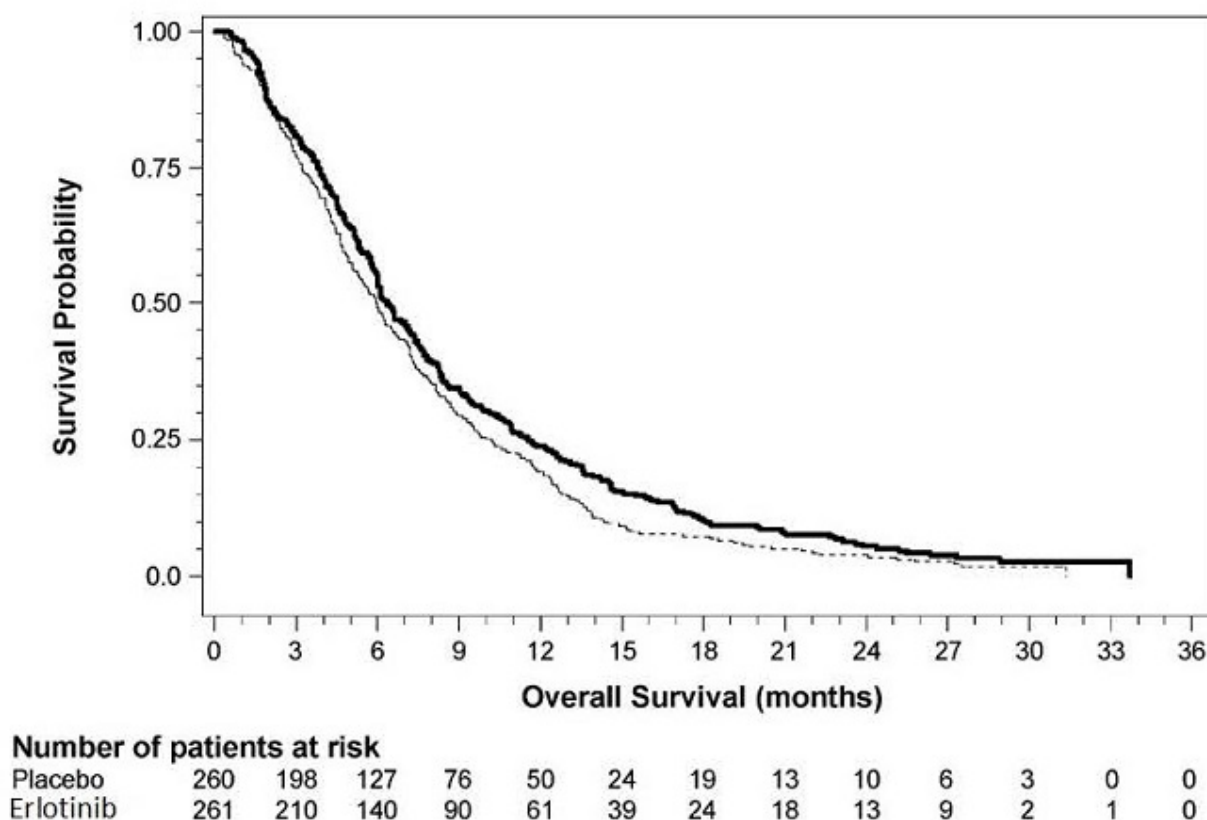
Efficacy Parameter	Erlotinib + Gemcitabine (N = 261)	Placebo + Gemcitabine (N = 260)
Overall Survival (OS)		
Number of Deaths	250	254
Median OS in Months (95% CI)	6.5 (6.0, 7.4)	6.0 (5.1, 6.7)
Hazard Ratio (95% CI) <sup>(1)</sup>	0.81 (0.68, 0.97)	
p-value (stratified log-rank test) <sup>(2)</sup>	0.028	
Progression-Free Survival (PFS)		
Number of Progression or Deaths (%)	225	232
Median PFS in Months (95% CI)	3.8 (3.6, 4.9)	3.6 (3.3, 3.8)
Hazard Ratio (95% CI) <sup>1</sup>	0.76 (0.64, 0.92)	
Objective Response		
Objective Response Rate (95% CI)	8.6% (5.4, 12.9)	7.9% (4.8, 12.0)

<sup>(1)</sup> Cox regression model with the following covariates: ECOG performance status and extent of disease.

<sup>(2)</sup> Two-sided log-rank test stratified by ECOG performance status and extent of disease.

Survival was evaluated in the intent-to-treat population. Figure 4 depicts the Kaplan-Meier curves for overall survival in the 100 mg cohort. The primary survival and PFS analyses were two-sided log-rank tests stratified by ECOG performance status and extent of disease.

**Figure 4: Kaplan-Meier Curves for Overall Survival: 100 mg Cohort in Study 5**



**Note:** HR is from Cox regression model with the following covariates: ECOG performance status and extent of disease. The p-value is from two-sided Log-Rank test stratified by ECOG performance status and extent of disease.

## 16 HOW SUPPLIED/STORAGE AND HANDLING

25 mg Tablets: White to off white round, biconvex film-coated tablets, debossed with “S13” on one side and plain on other side. Supplied in: Bottles of 30:

NDC 59923-725-30

100 mg Tablets: White to off white round, biconvex film-coated tablets, debossed with “S12” on one side and plain on other side. Supplied in: Bottles of 30:

NDC 59923-726-30

150 mg Tablets: White to off white round, biconvex film-coated tablets, debossed with “S11” on one side and plain on other side. Supplied in: Bottles of 30:

NDC 59923-727-30

Store at 25°C (77°F); excursions permitted to 15°C -30°C (59°F -86°F). [See USP Controlled Room Temperature].

## 17 PATIENT COUNSELING INFORMATION

### Skin rash, bullous and exfoliative skin disorders

- Advise patients that skin reactions can occur or worsen on sun-exposed areas while taking erlotinib tablets, and proactive intervention may include alcohol-free emollient cream and use of sunscreen or



avoidance of sun exposure. Advise patients that hyperpigmentation or dry skin, with or without digital skin fissures, have been reported and in the majority of cases were associated with rash [see *Adverse Reactions* (6.1)].

- Advise patients that erlotinib tablets can increase the risk of bullous and exfoliative skin disorders and to seek immediately medical attention for severe skin reactions [see *Warnings and Precautions* (5.5)].

### Diarrhea

Advise patients that diarrhea can usually be managed with loperamide and to contact their healthcare provider for severe or persistent diarrhea [see *Adverse Reactions* (6.1)].

### Interstitial lung disease

Advise patients of the risk of severe or fatal ILD, including pneumonitis. Advise patients to contact their healthcare provider immediately to report new or worsening unexplained shortness of breath or coughing [see *Dosage and Administration* (2.4) and *Warnings and Precautions* (5.1)].

### Renal failure

Advise patients of the risk of developing renal failure. Inform patients of the need for the healthcare provider to monitor kidney function and electrolytes [see *Warnings and Precautions* (5.2)].

### Hepatotoxicity

Advise patients to immediately report signs or symptoms of hepatotoxicity [see *Warnings and Precautions* (5.3)].

### Gastrointestinal perforations

Advise patients that erlotinib tablets can increase the risk of gastrointestinal perforation or fistula and to seek immediate medical attention for severe abdominal pain [see *Dosage and Administration* (2.4) and *Warnings and Precautions* (5.4)].

### Cerebrovascular accident

Advise patients of the risk of cerebrovascular accident and seek immediate medical attention [see *Dosage and Administration* (2.4) and *Warnings and Precautions* (5.6)].

### Ocular disorders

Advise patients promptly to contact their healthcare provider if they develop eye signs or symptoms, lacrimation, light sensitivity, blurred vision, eye pain, red eye, or changes in vision [see *Dosage and Administration* (2.4) and *Warnings and Precautions* (5.8)].

### Hemorrhage in patients taking warfarin

Advise patients who are receiving warfarin of the need to monitor INR or other coumarin-derivative anticoagulants [see *Warnings and Precautions* (5.9) and *Drug Interactions* (7)].

### Hair and nail disorders

Advise patients that hair and nail disorders, including hirsutism and brittle and loose nails, have been reported [see *Adverse Reactions* (6.1)].

### Embryo-fetal toxicity

- Advise pregnant women and females of reproductive potential of the potential risk to a fetus. Advise females of reproductive potential to inform their healthcare provider of a known or suspected pregnancy [see *Warnings and Precautions* (5.10), *Use in Specific Populations* (8.1)].
- Advise females of reproductive potential to use effective contraception during treatment with erlotinib tablets, and for 1 month after the last dose [see *Use in Specific Populations* (8.3)].

### Lactation

- Advise women not to breastfeed during treatment with erlotinib tablets and for 2 weeks after the final dose [see *Use in Specific Populations (8.2)*].

### Smoking

- Advise patients to contact their health care provider for any changes in smoking status and that the dose of erlotinib tablets may need to be adjusted if they smoke [see *Drug Interactions (7)* and *Clinical Pharmacology (12.3)*]
- Advise patients to stop smoking [see *Clinical Pharmacology (12.3)*].

### **Distributed by:**

Areva Pharmaceuticals, Inc.

Georgetown, IN 47122



Made in India

Revised: 01/2020

### **PACKAGE LABEL PRINCIPAL DISPLAY PANEL**

25mg Tablets:

Unvarnished area  
↓

<p>NDC 59923-725-30</p> <h1>Erlotinib Tablets</h1> <p><b>25 mg</b></p> <p>Each film-coated tablet contains 25 mg of erlotinib free base.</p> <p><b>30 Tablets</b></p> <p>Rx Only</p> 	<p><b>USUAL DOSAGE:</b> See enclosed package insert for complete prescribing information.</p> <p><b>STORAGE:</b> Storage at 25°C (77°F); excursions permitted to 15°-30°C (59°-86°F) (See USP Controlled Room Temperature).</p> <p><b>Distributed by:</b> Areva Pharmaceuticals, Inc. Georgetown, IN 47122</p>	<p>Code: TS/DRUGS/1/2013</p> <p>4500524</p> <p>01/2020</p> <p>EXP:</p> <p>LOT:</p>	 <p>N 3 59923 72530 0</p>
--	--	--	--



100mg Tablets:

NDC 59923-726-30

# Erlotinib Tablets

**100 mg**

Each film-coated tablet contains  
100 mg of erlotinib free base.

30 Tablets

Rx Only



## USUAL DOSAGE:

See enclosed package insert for  
complete prescribing information.

## STORAGE:

Storage at 25°C (77°F); excursions  
permitted to 15°-30°C (59°-86°F)  
(See USP Controlled Room  
Temperature).

## Distributed by:

Areva Pharmaceuticals, Inc.  
Georgetown, IN 47122

Unvarnished area



Code: TS/DRUGS/1/2013

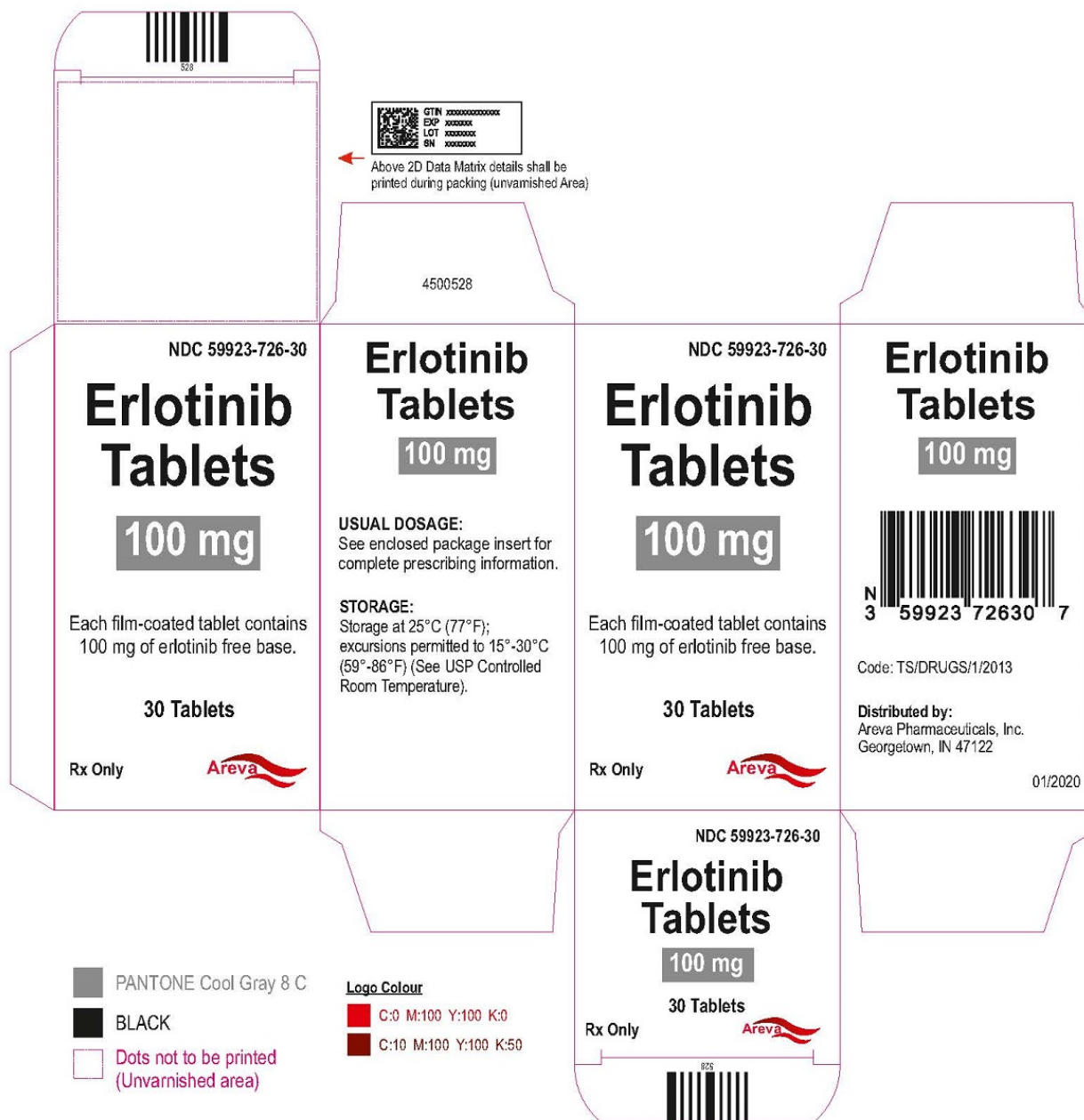
4500525

EXP:

LOT:



01/2020



150 mg Tablets:

NDC 59923-727-30

# Erlotinib Tablets

**150 mg**

Each film-coated tablet contains  
150 mg of erlotinib free base.

30 Tablets

Rx Only



## USUAL DOSAGE:

See enclosed package insert for  
complete prescribing information.

## STORAGE:

Storage at 25°C (77°F); excursions  
permitted to 15°-30°C (59°-86°F)  
(See USP Controlled Room  
Temperature).

## Distributed by:

Areva Pharmaceuticals, Inc.  
Georgetown, IN 47122

Unvarnished area



Code: TS/DRUGS/1/2013

4500526

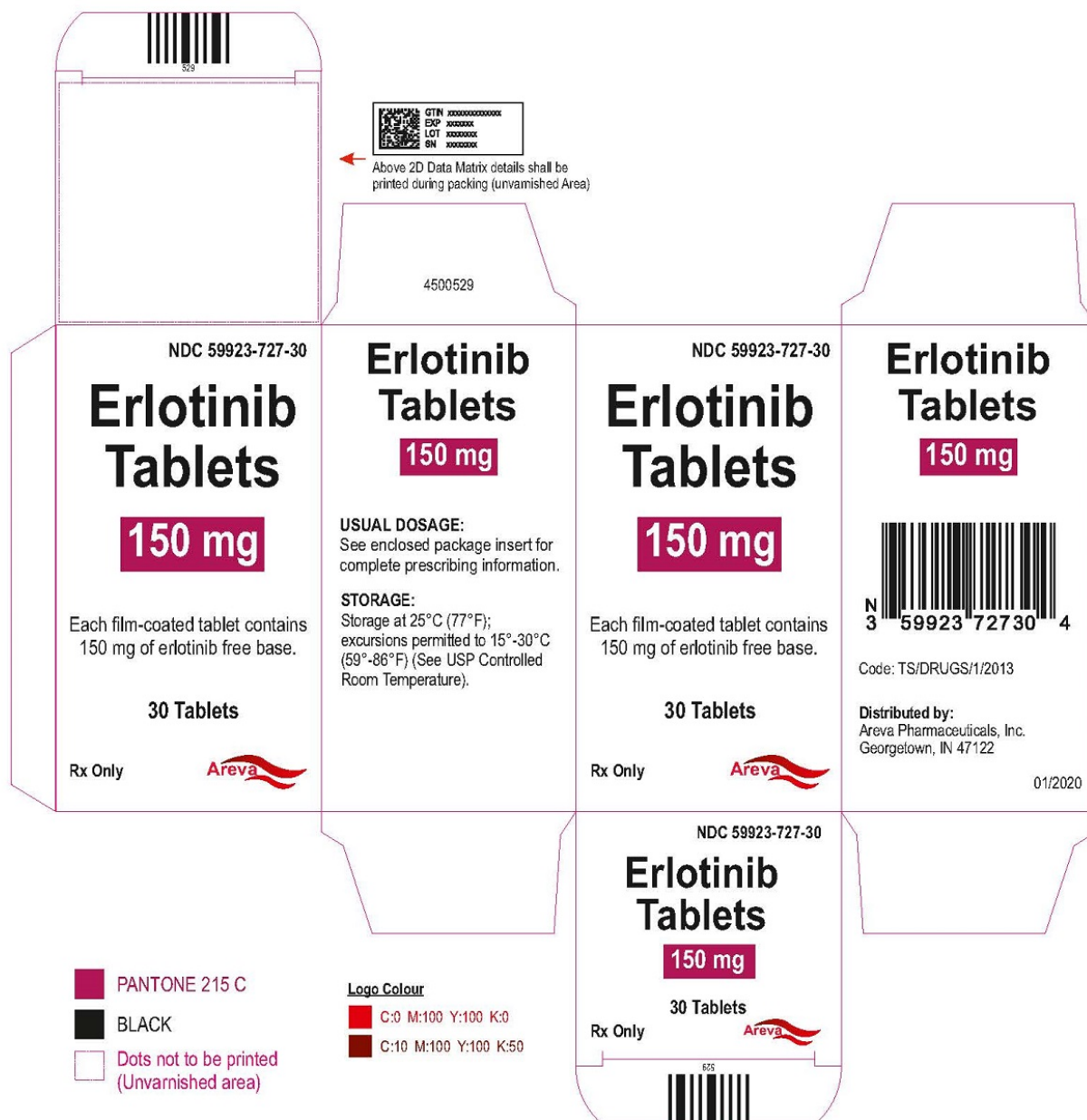
01/2020

EXP:

LOT:



N 3 59923 72730 4



## ERLOTINIB

erlotinib tablet, film coated

### Product Information

Product Type	HUMAN PRESCRIPTION DRUG	Item Code (Source)	NDC:59923-727
Route of Administration	ORAL		

### Active Ingredient/Active Moiety

Ingredient Name	Basis of Strength	Strength
ERLOTINIB HYDROCHLORIDE (UNII: DA87705X9K) (ERLOTINIB - UNII: J4T82NDH7E)	ERLOTINIB	150 mg

Inactive Ingredients				
Ingredient Name			Strength	
MICROCRYSTALLINE CELLULOSE (UNII: OP1R32D61U)				
MAGNESIUM STEARATE (UNII: 70097M6I30)				
SODIUM STARCH GLYCOLATE TYPE A POTATO (UNII: 5856J3G2A2)				
HYPROMELLOSE, UNSPECIFIED (UNII: 3NXW29V3WO)				
TITANIUM DIOXIDE (UNII: 15FIX9V2JP)				
LACTOSE MONOHYDRATE (UNII: EWQ57Q8I5X)				
SODIUM LAURYL SULFATE (UNII: 368GB5141J)				
HYDROXYPROPYL CELLULOSE, UNSPECIFIED (UNII: 9XZ8H6N6OH)				
POLYETHYLENE GLYCOL, UNSPECIFIED (UNII: 3WJQ0SDW1A)				
Product Characteristics				
Color	white	Score	no score	
Shape	ROUND	Size	11mm	
Flavor		Imprint Code	S11	
Contains				
Packaging				
#	Item Code	Package Description	Marketing Start Date	Marketing End Date
1	NDC:59923-727-30	1 in 1 BOX	05/01/2020	
1		30 in 1 BOTTLE; Type 0: Not a Combination Product		
Marketing Information				
Marketing Category	Application Number or Monograph Citation		Marketing Start Date	Marketing End Date
ANDA	ANDA211960		05/01/2020	

## ERLOTINIB

erlotinib tablet, film coated

Product Information			
Product Type	HUMAN PRESCRIPTION DRUG	Item Code (Source)	NDC:59923-725
Route of Administration	ORAL		
Active Ingredient/Active Moiety			
Ingredient Name		Basis of Strength	Strength
ERLOTINIB HYDROCHLORIDE (UNII: DA87705X9K) (ERLOTINIB - UNII:J4T82NDH7E)		ERLOTINIB	25 mg
Inactive Ingredients			
Ingredient Name			Strength



TITANIUM DIOXIDE (UNII: 15FIX9V2JP)	
SODIUM STARCH GLYCOLATE TYPE A POTATO (UNII: 5856J3G2A2)	
MAGNESIUM STEARATE (UNII: 70097M6I30)	
POLYETHYLENE GLYCOL, UNSPECIFIED (UNII: 3WJQ0SDW1A)	
MICROCRYSTALLINE CELLULOSE (UNII: OP1R32D61U)	
LACTOSE MONOHYDRATE (UNII: EWQ57Q8I5X)	
SODIUM LAURYL SULFATE (UNII: 368GB5141J)	
HYPROMELLOSE, UNSPECIFIED (UNII: 3NXW29V3WO)	
HYDROXYPROPYL CELLULOSE, UNSPECIFIED (UNII: 9XZ8H6N6OH)	

### Product Characteristics

Color	white	Score	no score
Shape	ROUND	Size	6mm
Flavor		Imprint Code	S13
Contains			

### Packaging

#	Item Code	Package Description	Marketing Start Date	Marketing End Date
1	NDC:59923-725-30	1 in 1 BOX	05/01/2020	
1		30 in 1 BOTTLE; Type 0: Not a Combination Product		

### Marketing Information

Marketing Category	Application Number or Monograph Citation	Marketing Start Date	Marketing End Date
ANDA	ANDA211960	05/01/2020	

## ERLOTINIB

erlotinib tablet, film coated

### Product Information

Product Type	HUMAN PRESCRIPTION DRUG	Item Code (Source)	NDC:59923-726
Route of Administration	ORAL		

### Active Ingredient/Active Moiety

Ingredient Name	Basis of Strength	Strength
ERLOTINIB HYDROCHLORIDE (UNII: DA87705X9K) (ERLOTINIB - UNII:J4T82NDH7E)	ERLOTINIB	100 mg

### Inactive Ingredients

Ingredient Name	Strength
MICROCRYSTALLINE CELLULOSE (UNII: OP1R32D61U)	
LACTOSE MONOHYDRATE (UNII: EWQ57Q8I5X)	
TITANIUM DIOXIDE (UNII: 15FIX9V2JP)	

SODIUM LAURYL SULFATE (UNII: 368GB5141J)				
MAGNESIUM STEARATE (UNII: 70097M6I30)				
HYDROXYPROPYL CELLULOSE, UNSPECIFIED (UNII: 9XZ8H6N6OH)				
POLYETHYLENE GLYCOL, UNSPECIFIED (UNII: 3WJQ0SDW1A)				
HYPROMELLOSE, UNSPECIFIED (UNII: 3NXW29V3WO)				
SODIUM STARCH GLYCOLATE TYPE A POTATO (UNII: 5856J3G2A2)				
Product Characteristics				
Color	white	Score	no score	
Shape	ROUND	Size	9mm	
Flavor		Imprint Code	S12	
Contains				
Packaging				
#	Item Code	Package Description	Marketing Start Date	Marketing End Date
1	NDC:59923-726-30	1 in 1 BOX	05/01/2020	
1		30 in 1 BOTTLE; Type 0: Not a Combination Product		
Marketing Information				
Marketing Category	Application Number or Monograph Citation		Marketing Start Date	Marketing End Date
ANDA	ANDA211960		05/01/2020	

**Labeler** - Areva Pharmaceuticals (833189835)

<b>Establishment</b>			
Name	Address	ID/FEI	Business Operations
Shilpa Medicare Limited		650644136	manufacture(59923-725, 59923-726, 59923-727)

Revised: 1/2021

Areva Pharmaceuticals