

COLGATE TOTAL CLEAN IN BETWEEN- sodium fluoride and triclosan paste, dentifrice

Colgate-Palmolive Company

Colgate® Total® Clean in Between

Drug Facts

Active ingredients	Purpose
Sodium fluoride 0.24% (0.15% w/v fluoride ion)	Anticavity
Triclosan 0.30%	Antigingivitis

Uses

aids in the prevention of:

- cavities
- plaque
- gingivitis

Warnings

Keep out of the reach of children under 6 years of age.

If more than used for brushing is accidentally swallowed, get medical help or contact a Poison Control Center right away.

Ask a dentist before use if you have

- bleeding or redness lasting more than 2 weeks
- pain, swelling, pus, loose teeth, or more spacing between teeth

These may be signs of periodontitis, a serious form of gum disease.

Directions

supervise children as necessary until capable of using without supervision.

adults and children 6 years of age and older	brush teeth thoroughly, preferably after each meal or at least twice a day, or as directed by a dentist or a physician
children under 12 years	instruct in good brushing and rinsing habits (to minimize swallowing)
children under 6 years	do not use unless directed by a dentist or a physician

Anti-plaque and anti-gingivitis use not proven in children.

Inactive ingredients

water, hydrated silica, glycerin, sorbitol, PVM/MA copolymer, flavor, sodium lauryl sulfate, cellulose gum, sodium hydroxide, propylene glycol, carrageenan, sodium saccharin, mica, titanium dioxide, FD&C blue no. 1

Questions?

1-800-468-6502

Dist. by:

COLGATE-PALMOLIVE COMPANY

New York, NY 10022

PRINCIPAL DISPLAY PANEL - 164 g Tube Carton

Colgate®

Anticavity Fluoride and Antigingivitis Toothpaste

Total®

CLEAN-IN-BETWEEN

- ✓ CAVITIES
- ✓ PLAQUE
- ✓ GINGIVITIS
- ✓ ENAMEL
- ✓ TARTAR
- ✓ BREATH
- ✓ WHITENS

Gel

**NEW
MICRO-FOAMING
FORMULA!**

NET WT 5.8 OZ (164 g)

HELPS FIGHT PLAQUE BUILD-UP FOR HEALTHIER GUMS

Colgate® Total®

FROM COLGATE TO YOU - BUILDING ORAL HEALTH AWARENESS

Daily oral hygiene can help to treat and prevent the early stages of gingivitis. An ideal oral hygiene routine should include regular dental check ups, flossing daily and twice daily brushing with an antingivitis toothpaste.

HEALTHY GUMS



Healthy, pink gums

DENTAL PLAQUE BUILD-UP CAN LEAD TO GINGIVITIS



Dental Plaque is a sticky bacterial film that builds up on teeth, if it is not regularly cleaned away.



Plaque build-up can lead to swelling and redness, which are signs of gingivitis, an early form of gum disease.



One area where plaque can build up and lead to gingivitis is between teeth along the gumline.

Colgate®
Anticavity Fluoride and Antingivitis Toothpaste

Total®

CLEAN-IN-BETWEEN

NET WT 5.8 OZ (164 g)

HELPS FIGHT PLAQUE BUILD-UP FOR HEALTHIER GUMS

- ✓ CAVITIES
- ✓ PLAQUE
- ✓ GINGIVITIS
- ✓ ENAMEL
- ✓ TARTAR
- ✓ BREATH
- ✓ WHITENS

Gel

NEW
MICRO-FOAMING FORMULA!

Colgate® Total®

CLEAN-IN-BETWEEN

Antingivitis formula helps fight plaque build-up for healthier gums

Colgate Total®

is uniquely formulated to:

- Help prevent gingivitis
- Help prevent cavities
- Help prevent plaque build-up

And also:

- Fight tartar build-up
- Fight bad breath
- Whiten teeth



MICRO-FOAMING FORMULA REACHES ALL AROUND THE TEETH AND ALONG THE GUM LINE.

This product is not intended to replace flossing. For best results, brush twice a day, floss daily, and see a dentist every 6 months.

Dist. by:
COLGATE-PALMOLIVE COMPANY
New York, NY 10022
www.colgatetotal.com **MADE IN U.S.A.**

SAVE WATER
www.colgate.com/savewater

Turning off your water while brushing your teeth can save up to 4 gallons of water each time you brush!

Drug Facts

Active ingredients

Sodium fluoride 0.24% (0.15% w/v fluoride ion) Anticavity
Triclosan 0.30% Antingivitis

Purpose

Anticavity
Antingivitis

Uses

aids in the prevention of:
• cavities • plaque • gingivitis

Warnings

Keep out of the reach of children under 6 years of age.
If more than used for brushing is accidentally swallowed, get medical help or contact a Poison Control Center right away.

Ask a dentist before use if you have

- bleeding or redness lasting more than 2 weeks
 - pain, swelling, pus, loose teeth, or more spacing between teeth
- These may be signs of periodontitis, a serious form of gum disease.

Drug Facts (continued)

Directions supervise children as necessary until capable of using without supervision.
adults and children 6 years of age and older brush teeth thoroughly, preferably after each meal or at least twice a day, or as directed by a dentist or a physician

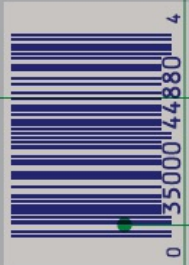
children under 12 years instruct in good brushing and rinsing habits (to minimize swallowing)

children under 6 years do not use unless directed by a dentist or a physician

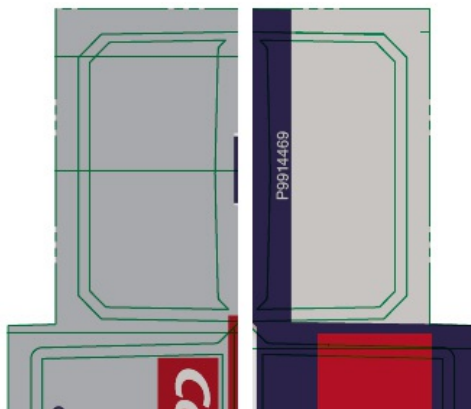
Antiplaque and antingivitis use not proven in children.

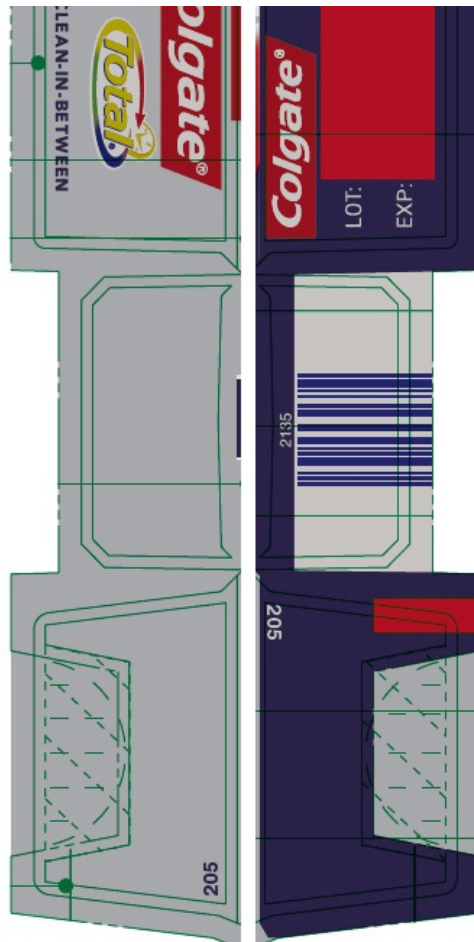
Inactive ingredients water, hydrated silica, glycerin, sorbitol, PVM/MA copolymer, flavor, sodium lauryl sulfate, cellulose gum, sodium hydroxide, propylene glycol, carrageenan, sodium saccharin, mica, titanium dioxide, FD&C blue no. 1

Questions? 1-800-468-6502



GLUE LINE





COLGATE TOTAL CLEAN IN BETWEEN

sodium fluoride and triclosan paste, dentifrice

Product Information

Product Type	HUMAN OTC DRUG	Item Code (Source)	NDC:35000-384
Route of Administration	DENTAL		

Active Ingredient/Active Moiety

Ingredient Name	Basis of Strength	Strength
SODIUM FLUORIDE (UNII: 8ZYQ1474W7) (FLUORIDE ION - UNII:Q80VPU408O)	FLUORIDE ION	1.1 mg in 1 g
TRICLOSAN (UNII: 4NM5039Y5X) (TRICLOSAN - UNII:4NM5039Y5X)	TRICLOSAN	3 mg in 1 g

Inactive Ingredients

Ingredient Name	Strength
WATER (UNII: 059QF0KO0R)	
HYDRATED SILICA (UNII: Y6O7T4G8P9)	
GLYCERIN (UNII: PDC6A3C0OX)	
SORBITOL (UNII: 506T60A25R)	
BUTYL ESTER OF METHYL VINYL ETHER/MALEIC ANHYDRIDE COPOLYMER (125000 MW) (UNII: 389H2R62BD)	

SODIUM LAURYL SULFATE (UNII: 368GB5141J)	
SODIUM HYDROXIDE (UNII: 55X04QC32I)	
PROPYLENE GLYCOL (UNII: 6DC9Q167V3)	
SACCHARIN SODIUM (UNII: SB8ZUX40TY)	
CARBOXYMETHYLCELLULOSE SODIUM, UNSPECIFIED (UNII: K679OBS311)	
MICA (UNII: V8A1AW0880)	
TITANIUM DIOXIDE (UNII: 15FIX9V2JP)	
CARRAGEENAN (UNII: 5C69YCD2YJ)	
FD&C BLUE NO. 1 (UNII: H3R47K3TBD)	

Product Characteristics

Color	BLUE	Score	
Shape		Size	
Flavor	MINT	Imprint Code	
Contains			

Packaging

#	Item Code	Package Description	Marketing Start Date	Marketing End Date
1	NDC:35000-384-16	1 in 1 CARTON	10/18/2016	12/31/2021
1		21 g in 1 TUBE; Type 0: Not a Combination Product		
2	NDC:35000-384-69	1 in 1 CARTON	10/18/2016	12/31/2021
2		113 g in 1 TUBE; Type 0: Not a Combination Product		
3	NDC:35000-384-66	1 in 1 CARTON	10/18/2016	12/31/2021
3		164 g in 1 TUBE; Type 0: Not a Combination Product		

Marketing Information

Marketing Category	Application Number or Monograph Citation	Marketing Start Date	Marketing End Date
NDA	NDA020231	10/18/2016	

Labeler - Colgate-Palmolive Company (001344381)

Establishment

Name	Address	ID/FEI	Business Operations
Colgate-Palmolive		785047999	MANUFACTURE(35000-384)