

METAXALONE- metaxalone tablet
St. Mary's Medical Park Pharmacy

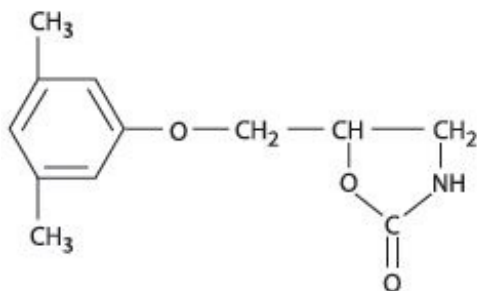
Metaxalone Tablets, USP

RX ONLY

DESCRIPTION

Metaxalone is available as an 800 mg pink, capsule shaped, scored tablet.

Chemically, metaxalone is 5-[(3,5-dimethylphenoxy)methyl]-2-oxazolidinone. The empirical formula is $C_{12}H_{15}NO_3$, which corresponds to a molecular weight of 221.25. The structural formula is:



Metaxalone is a white to almost white, odorless crystalline powder freely soluble in chloroform, soluble in methanol and in 96% ethanol, but practically insoluble in ether or water.

Each tablet contains 800 mg metaxalone and the following inactive ingredients: carboxymethylcellulose sodium, alginic acid, stearic acid, hydrogenated castor oil, magnesium stearate, colloidal silicon dioxide, sodium lauryl sulfate, and FD&C Red #40 Aluminum Lake.

CLINICAL PHARMACOLOGY

Mechanism of Action

The mechanism of action of metaxalone in humans has not been established, but may be due to general central nervous system (CNS) depression. Metaxalone has no direct action on the contractile mechanism of striated muscle, the motor end plate, or the nerve fiber.

Pharmacokinetics

The pharmacokinetics of metaxalone have been evaluated in healthy adult volunteers after single dose administration of metaxalone under fasted and fed conditions at doses ranging from 400 mg to 800 mg.

Absorption

Peak plasma concentrations of metaxalone occur approximately 3 hours after a 400 mg oral dose under fasted conditions. Thereafter, metaxalone concentrations decline log-linearly with a terminal half-life of 9.0 ± 4.8 hours. Doubling the dose of metaxalone from 400 mg to 800 mg results in a roughly proportional increase in metaxalone exposure as indicated by peak plasma concentrations (C_{max}) and area under the curve (AUC). Dose proportionality at doses above 800 mg has not been studied. The absolute bioavailability of metaxalone is not known.

The single-dose pharmacokinetic parameters of metaxalone in two groups of healthy volunteers are

shown in Table 1.

Table 1: Mean (% CV) Metaxalone Pharmacokinetic Parameters

Dose (mg)	C _{max} (ng/mL)	T _{max} (h)	AUC _∞ (ng•h/mL)	t _{1/2} (h)	CL/F (L/h)
400 ¹	983 (53)	3.3 (35)	7479 (51)	9.0 (53)	68 (50)
800 ²	1816 (43)	3.0 (39)	15044 (46)	8.0 (58)	66 (51)

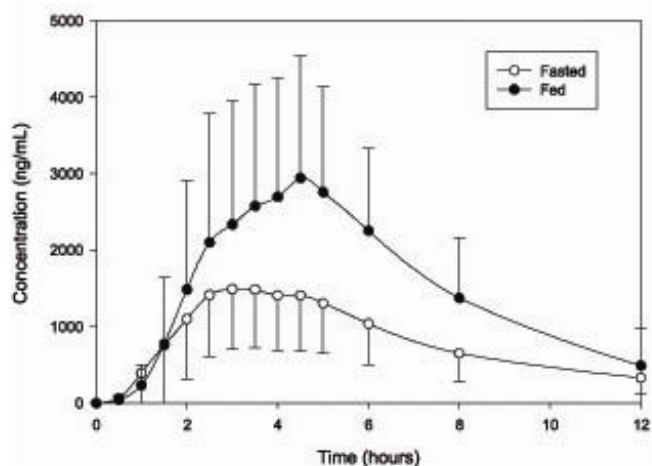
¹ Subjects received 1×400 mg tablet under fasted conditions (N=42)
² Subjects received 2×400 mg tablets under fasted conditions (N=59)

Food Effects

A randomized, two-way, crossover study was conducted in 42 healthy volunteers (31 males, 11 females) administered one 400 mg metaxalone tablet under fasted conditions and following a standard high-fat breakfast. Subjects ranged in age from 18 to 48 years (mean age = 23.5 ± 5.7 years). Compared to fasted conditions, the presence of a high fat meal at the time of drug administration increased C_{max} by 177.5% and increased AUC (AUC_{0-t}, AUC_∞) by 123.5% and 115.4%, respectively. Time-to-peak concentration (T_{max}) was also delayed (4.3 h *versus* 3.3 h) and terminal half-life was decreased (2.4 h *versus* 9.0 h) under fed conditions compared to fasted.

In a second food effect study of similar design, two 400 mg metaxalone tablets (800 mg) were administered to healthy volunteers (N=59, 37 males, 22 females), ranging in age from 18-50 years (mean age = 25.6 ± 8.7 years). Compared to fasted conditions, the presence of a high fat meal at the time of drug administration increased C_{max} by 193.6% and increased AUC (AUC_{0-t}, AUC_∞) by 146.4% and 142.2%, respectively. Time-to-peak concentration (T_{max}) was also delayed (4.9 h *versus* 3.0 h) and terminal half-life was decreased (4.2 h *versus* 8.0 h) under fed conditions compared to fasted conditions. Similar food effect results were observed in the above study when one metaxalone 800 mg tablet was administered in place of two metaxalone 400 mg tablets. The increase in metaxalone exposure coinciding with a reduction in half-life may be attributed to more complete absorption of metaxalone in the presence of a high fat meal (Figure 1).

Figure 1. Mean (SD) Concentrations of Metaxalone following an 800 mg Dose under Fasted and Fed Conditions



Distribution, Metabolism, and Excretion

Although plasma protein binding and absolute bioavailability of metaxalone are not known, the apparent volume of distribution ($V/F \sim 800$ L) and lipophilicity ($\log P = 2.42$) of metaxalone suggest that the drug is extensively distributed in the tissues. Metaxalone is metabolized by the liver and excreted in the urine as unidentified metabolites. Hepatic Cytochrome P450 enzymes play a role in the metabolism of metaxalone. Specifically, CYP1A2, CYP2D6, CYP2E1, and CYP3A4 and, to a lesser extent, CYP2C8, CYP2C9, and CYP2C19 appear to metabolize metaxalone.

Metaxalone does not significantly inhibit major CYP enzymes such as CYP1A2, CYP2A6, CYP2B6, CYP2C8, CYP2C9, CYP2C19, CYP2D6, CYP2E1, and CYP3A4. Metaxalone does not significantly induce major CYP enzymes such as CYP1A2, CYP2B6, and CYP3A4 *in vitro*.

Pharmacokinetics in Special Populations

Age:

The effects of age on the pharmacokinetics of metaxalone were determined following single administration of two 400 mg tablets (800 mg) under fasted and fed conditions. The results were analyzed separately, as well as in combination with the results from three other studies. Using the combined data, the results indicate that the pharmacokinetics of metaxalone are significantly more affected by age under fasted conditions than under fed conditions, with bioavailability under fasted conditions increasing with age.

The bioavailability of metaxalone under fasted and fed conditions in three groups of healthy volunteers of varying age is shown in Table 2.

Table 2: Mean (% CV) Pharmacokinetic Parameters Following Single Administration of Two 400 mg Metaxalone Tablets (800 mg) under Fasted and Fed Conditions

	Younger Volunteers		Older Volunteers			
Age (years)	25.6 ± 8.7		39.3 ± 10.8		71.5 ± 5.0	
N	59		21		23	
Food	Fasted	Fed	Fasted	Fed	Fasted	Fed
C_{max} (ng/mL)	1816 (43)	3510 (41)	2719 (46)	2915 (55)	3168 (43)	3680 (59)
T_{max} (h)	3.0 (39)	4.9 (48)	3.0 (40)	8.7 (91)	2.6 (30)	6.5 (67)
AUC_{0-t} (ng•h/mL)	14531 (47)	20683 (41)	19836 (40)	20482 (37)	23797 (45)	24340 (48)
AUC_∞ (ng•h/mL)	15045 (46)	20833 (41)	20490 (39)	20815 (37)	24194 (44)	24704 (47)

Gender:

The effect of gender on the pharmacokinetics of metaxalone was assessed in an open label study, in which 48 healthy adult volunteers (24 males, 24 females) were administered two metaxalone 400 mg tablets (800 mg) under fasted conditions. The bioavailability of metaxalone was significantly higher in females compared to males as evidenced by C_{max} (2115 ng/mL *versus* 1335 ng/mL) and AUC_∞ (17884 ng•h/mL *versus* 10328 ng•h/mL). The mean half-life was 11.1 hours in females and 7.6 hours in males. The apparent volume of distribution of metaxalone was approximately 22% higher in males than in females, but not significantly different when adjusted for body weight. Similar findings were also seen when the previously described combined dataset was used in the analysis.

Hepatic/Renal Insufficiency:

The impact of hepatic and renal disease on the pharmacokinetics of metaxalone has not been determined. In the absence of such information, metaxalone should be used with caution in patients with hepatic and/or renal impairment.

INDICATIONS AND USAGE

Metaxalone is indicated as an adjunct to rest, physical therapy, and other measures for the relief of discomforts associated with acute, painful musculoskeletal conditions. The mode of action of this drug has not been clearly identified, but may be related to its sedative properties. Metaxalone does not directly relax tense skeletal muscles in man.

CONTRAINDICATIONS

Known hypersensitivity to any components of this product.

Known tendency to drug induced, hemolytic, or other anemias.

Significantly impaired renal or hepatic function.

WARNINGS

Serotonin Syndrome

Cases of serotonin syndrome, a potentially life-threatening condition, have been reported during concomitant use of serotonergic drugs with Metaxalone used within the recommended dosage range (see PRECAUTIONS: Drug Interactions) and with Metaxalone as a single agent taken at doses higher than the recommended dose (see OVERDOSAGE). Serotonergic drugs include selective serotonin reuptake inhibitors (SSRIs), serotonin and norepinephrine reuptake inhibitors (SNRIs), tricyclic antidepressants (TCAs), triptans, 5-HT₃ receptor antagonists, opioids (particularly fentanyl, meperidine, and methadone), drugs that affect the serotonergic neurotransmitter system (e.g., mirtazapine, trazodone, tramadol), and drugs that impair metabolism of serotonin (including monoamine oxidase (MAO) inhibitors, both those intended to treat psychiatric disorders and also others, such as linezolid and intravenous methylene blue) (see PRECAUTIONS: Drug Interactions).

Serotonin syndrome symptoms may include mental status changes (e.g., agitation, hallucinations, coma), autonomic instability (e.g., tachycardia, labile blood pressure, hyperthermia), neuromuscular aberrations (e.g., hyperreflexia, incoordination, rigidity), and/or gastrointestinal symptoms (e.g., nausea, vomiting, diarrhea). The onset of symptoms generally occurs within several hours to a few days, but may occur later than that. Discontinue Metaxalone if serotonin syndrome is suspected.

Risks from Concomitant Use with Alcohol or other CNS Depressants

The sedative effects of Metaxalone and other CNS depressants (e.g., alcohol, benzodiazepines, opioids, tricyclic antidepressants (TCAs)) may be additive. Exercise caution with patients who take more than one of these CNS depressants simultaneously. Follow patients closely for signs and symptoms of respiratory depression and sedation (see PRECAUTIONS: Drug Interactions).

PRECAUTIONS

Metaxalone should be administered with great care to patients with pre-existing liver damage. Serial liver function studies should be performed in these patients.

False-positive Benedict's tests, due to an unknown reducing substance, have been noted. A glucose-specific test will differentiate findings.

Taking metaxalone with food may enhance general CNS depression; elderly patients may be especially susceptible to this CNS effect (see **CLINICAL PHARMACOLOGY: Pharmacokinetics** and **PRECAUTIONS: Information for Patients**).

Information for Patients

Driving or Operating Heavy Machinery:

Metaxalone may impair mental and/or physical abilities required for performance of hazardous tasks, such as operating machinery or driving a motor vehicle, especially when used with alcohol or other CNS depressants.

Serotonin Syndrome:

Inform patients that Metaxalone could cause a rare but potentially life-threatening condition resulting from administration of doses higher than the recommended dose or from concomitant administration of serotonergic drugs with Metaxalone used within the recommended dosage range. Warn patients of the symptoms of serotonin syndrome and to seek medical attention right away if symptoms develop. Instruct patients to inform their healthcare providers if they are taking, or plan to take, serotonergic medications (see WARNINGS, PRECAUTIONS: Drug Interactions, and OVERDOSAGE).

Drug Interactions

CNS Depressants:

The sedative effects of Metaxalone and other CNS depressants (e.g., alcohol, benzodiazepines, opioids, tricyclic antidepressants (TCAs)) may be additive. Exercise caution with patients who take more than one of these CNS depressants simultaneously. Follow patients closely for signs and symptoms of respiratory depression and sedation (see WARNINGS).

Serotonergic Drugs:

Serotonin syndrome has resulted from concomitant use of serotonergic drugs with Metaxalone used within the recommended dosage range (see WARNINGS). If concomitant use is warranted, carefully observe the patient, particularly during treatment initiation and dose adjustment. Discontinue Metaxalone if serotonin syndrome is suspected.

Examples of serotonergic drugs include: selective serotonin reuptake inhibitors (SSRIs), serotonin and norepinephrine reuptake inhibitors (SNRIs), tricyclic antidepressants (TCAs), triptans, 5-HT₃ receptor antagonists, opioids (particularly fentanyl, meperidine, and methadone), drugs that affect the serotonin neurotransmitter system (e.g., mirtazapine, trazodone, tramadol), monoamine oxidase (MAO) inhibitors (those intended to treat psychiatric disorders and also others, such as linezolid and intravenous methylene blue).

Carcinogenesis, Mutagenesis, Impairment of Fertility

The carcinogenic potential of metaxalone has not been determined.

Pregnancy

Reproduction studies in rats have not revealed evidence of impaired fertility or harm to the fetus due to metaxalone. Post marketing experience has not revealed evidence of fetal injury, but such experience cannot exclude the possibility of infrequent or subtle damage to the human fetus. Safe use of metaxalone has not been established with regard to possible adverse effects upon fetal development. Therefore, metaxalone tablets should not be used in women who are or may become pregnant and particularly during early pregnancy unless, in the judgement of the physician, the potential benefits outweigh the possible hazards.

Nursing Mothers

It is not known whether this drug is secreted in human milk. As a general rule, nursing should not be undertaken while a patient is on a drug since many drugs are excreted in human milk.

Pediatric Use

Safety and effectiveness in children 12 years of age and below have not been established.

ADVERSE REACTIONS

The most frequent reactions to metaxalone include:

CNS: drowsiness, dizziness, headache, and nervousness or “irritability”;

Digestive: nausea, vomiting, gastrointestinal upset.

Other adverse reactions are:

Immune System: anaphylaxis, hypersensitivity reaction, rash with or without pruritus;

Hematologic: leukopenia; hemolytic anemia;

Hepatobiliary: jaundice;

CNS: cases of serotonin syndrome, a potentially life-threatening condition, have been reported during concomitant use of serotonergic drugs with metaxalone used within the recommended dosage range and with metaxalone as a single agent taken at doses higher than the recommended dose (see WARNINGS, PRECAUTIONS: Drug Interactions, and OVERDOSAGE).

OVERDOSAGE

Deaths by deliberate or accidental overdose have occurred with metaxalone, particularly in combination with antidepressants, and have been reported with this class of drug in combination with alcohol.

Serotonin syndrome has been reported when metaxalone was used at doses higher than the recommended dose (see WARNINGS and ADVERSE REACTIONS).

When determining the LD₅₀ in rats and mice, progressive sedation, hypnosis, and finally respiratory failure were noted as the dosage increased. In dogs, no LD₅₀ could be determined as the higher doses produced an emetic action in 15 to 30 minutes.

Treatment - Gastric lavage and supportive therapy. Consultation with a regional poison control center is recommended.

DOSAGE AND ADMINISTRATION

The recommended dose for adults and children over 12 years of age is one 800 mg tablet three to four times a day.

HOW SUPPLIED

Metaxalone Tablets, USP are available as 800 mg pink, capsule shaped, scored tablets, debossed “LCI” on one side and “14” bisect “35” on the other side.

NDC(s)

60760-289-06 BOTTLES OF 6

60760-289-20 BOTTLES OF 20

60760-289-30 BOTTLES OF 30

60760-289-60 BOTTLES OF 60

60760-289-90 BOTTLES OF 90

Store at 20° C to 25° C (68° to 77°F) [See USP Controlled Room Temperature].

Distributed by:



Lannett Company, Inc.

Philadelphia, PA 19136

CIB71144E

Rev. 12/19

PRINCIPAL DISPLAY PANEL

<p>NDC 60760-289-30 Metaxalone Tablets, USP 800mg QTY: 30 LOT# ??????? EXP ??-?? RX# 000000000000 MANUFACTURED BY: Lannett Company, Inc. Philadelphia, PA 19154</p>  <p>PACKAGED BY: St. Mary's MPP 10860 MAVINEE DR. ORO VALLEY, AZ 85737 MANAGED PHARMACY PROGRAMS</p>	<p>Metaxalone Tablets, USP 800mg QTY: 30 RX# 000000000000 NDC 60760-289-30 LOT# ??????? EXP ??-??</p>	<p>Metaxalone Tablets, USP 800mg QTY: 30 RX# 000000000000 NDC 60760-289-30 LOT# ??????? EXP ??-??</p>	<p>Metaxalone Tablets, USP 800mg QTY: 30 RX# 000000000000 NDC 60760-289-30 LOT# ??????? EXP ??-??</p>
<p>USE AS DIRECTED</p> <p>(01) 00360760289306 (21) 000000000000 (17) ??????? (10) ???????</p> 			
<p>Rx only STORE AT CONTROLLED ROOM TEMPERATURE 15°- 30° C (59°-86°F)</p>			

METAXALONE

metaxalone tablet

Product Information

Product Type	HUMAN PRESCRIPTION DRUG	Item Code (Source)	NDC:60760-289(NDC:0527-1435)
Route of Administration	ORAL		

Active Ingredient/Active Moiety

Ingredient Name	Basis of Strength	Strength
METAXALONE (UNII: 1NMA9J598 Y) (METAXALONE - UNII:1NMA9J598 Y)	METAXALONE	800 mg

Inactive Ingredients

Ingredient Name	Strength
CARBOXYMETHYLCELLULOSE SODIUM (UNII: K679OBS311)	
ALGINIC ACID (UNII: 8C3Z4148WZ)	
SILICON DIOXIDE (UNII: ETJ7Z6XBU4)	

FD&C RED NO. 40 (UNII: WZB9127XOA)	
ALUMINUM OXIDE (UNII: LM26O6933)	
HYDROGENATED CASTOR OIL (UNII: ZF94AP8MEY)	
STEARIC ACID (UNII: 4ELV7Z65AP)	
SODIUM LAURYL SULFATE (UNII: 368GB5141J)	
MAGNESIUM STEARATE (UNII: 70097M6I30)	

Product Characteristics

Color	pink	Score	2 pieces
Shape	OVAL (capsule-shaped)	Size	19mm
Flavor		Imprint Code	LCI;1435
Contains			

Packaging

#	Item Code	Package Description	Marketing Start Date	Marketing End Date
1	NDC:60760-289-20	20 in 1 BOTTLE, PLASTIC; Type 0: Not a Combination Product	03/31/2020	
2	NDC:60760-289-30	30 in 1 BOTTLE, PLASTIC; Type 0: Not a Combination Product	03/31/2020	
3	NDC:60760-289-90	90 in 1 BOTTLE, PLASTIC; Type 0: Not a Combination Product	03/31/2020	
4	NDC:60760-289-60	60 in 1 BOTTLE, PLASTIC; Type 0: Not a Combination Product	04/24/2020	
5	NDC:60760-289-06	6 in 1 BOTTLE, PLASTIC; Type 0: Not a Combination Product	06/16/2020	

Marketing Information

Marketing Category	Application Number or Monograph Citation	Marketing Start Date	Marketing End Date
ANDA	ANDA204770	03/31/2020	

Labeler - St. Mary's Medical Park Pharmacy (063050751)

Establishment

Name	Address	ID/FEI	Business Operations
St. Mary's Medical Park Pharmacy		063050751	relabel(60760-289) , repack(60760-289)

Revised: 6/2020

St. Mary's Medical Park Pharmacy