

**SKY PEG3350- polyethylene glycol 3350 powder, for solution**  
**McKesson Corporation dba SKY Packaging**

-----  
**McKesson Corporation dba Sky Packaging PEG3350 Drug Facts**

**Active ingredient (in each dose)**

Polyethylene Glycol 3350, 17 g

**Purpose**

Osmotic Laxative

**Use**

- relieves occasional constipation (irregularity)
- generally produces a bowel movement in 1 to 3 days

**Warnings**

**Allergy alert:** Do not use if you are allergic to polyethylene glycol

**Do not use**

if you have kidney disease, except under the advice and supervision of a doctor

**Ask a doctor before use if you have**

- nausea, vomiting or abdominal pain
- a sudden change in bowel habits that lasts over 2 weeks
- irritable bowel syndrome

**Ask a doctor or pharmacist before use if you are**

taking a prescription drug

**When using this product**

you may have loose, watery, more frequent stools

**Stop use and ask a doctor if**

- you have rectal bleeding or your nausea, bloating, cramping or abdominal pain gets worse. These may be signs of a serious condition.
- you get diarrhea
- you need to use a laxative for longer than 1 week

**If pregnant or breast-feeding,**

ask a health professional before use.

### **Keep out of reach of children.**

In case of overdose, get medical help or contact a Poison Control Center right away (1-800-222-1222).

### **Directions**

- **do not take more than directed unless advised by your doctor**
- adults and children 17 years of age and older:
- use once a day
- stir and dissolve one packet of powder (17 g) in any 4 to 8 ounces of beverage (cold, hot or room temperature) then drink
- do not combine with starch-based thickeners used for difficulty swallowing
- ensure that the powder is fully dissolved before drinking
- do not drink if there are any clumps
- use no more than 7 days
- children 16 years of age or under: ask a doctor

### **Other information**

- store at 20°-25°C (68°-77°F)
- tamper-evident: do not use if printed foil pouch is open or broken

### **Inactive ingredients**

none

### **Questions or comments?**

**1-800-719-9260**

### **Principal Display Panel**

SKY

Compare to MiraLAX<sup>®</sup> active ingredient

PEG3350

Polyethylene Glycol 3350 Powder for Solution, Osmotic Laxative

- Relieves Occasional Constipation (Irregularity) -

- Softens Stool -

Unflavored Powder ● Grit Free

Unflavored Powder Dissolves In Any Beverage!

30 Once-Daily Doses

30 Packets - NET WT 0.5 OZ (17g) Each

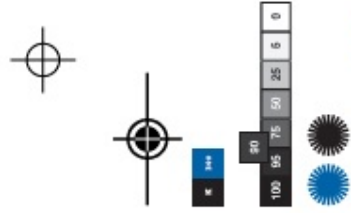


– Relieves Occasional Constipation (Irregularity) –  
 – Softens Stool –  
 Unflavored Powder • Grit Free  
 Unflavored Powder Dissolves In Any Beverage!

**Polyethylene Glycol 3350  
 Powder for Solution,  
 Osmotic Laxative**

**PEG3350**

NDC 63739-198-61  
 Compare to MiraLAX®  
 active ingredient



NDC 63739-198-61

Compare to MiraLAX®  
 active ingredient

**PEG3350**

**Polyethylene Glycol 3350  
 Powder for Solution,  
 Osmotic Laxative**

– Relieves Occasional Constipation (Irregularity) –  
 – Softens Stool –

Unflavored Powder • Grit Free  
 Unflavored Powder Dissolves In Any Beverage!

**30 Once-Daily Doses**  
 30 Packets - NET WT 0.5 OZ (17g) Each



NDC 63739-198-61

Compare to MiraLAX®  
 active ingredient

**PEG3350**

**Polyethylene Glycol 3350  
 Powder for Solution,  
 Osmotic Laxative**

– Relieves Occasional Constipation (Irregularity) –  
 – Softens Stool –

Unflavored Powder • Grit Free  
 Unflavored Powder Dissolves In Any Beverage!

**30 Once-Daily Doses**  
 30 Packets  
 NET WT 0.5 OZ (17g) Each




3 63739 19861 6  
 30830 SK C5

*Glue area  
 No print  
 No varnish*

No copy area

<p><b>Drug Facts</b></p> <p><b>Active ingredient (in each dose) Purpose</b> Polyethylene Glycol 3350, 17 g.....Osmotic Laxative</p> <p><b>Use</b></p> <ul style="list-style-type: none"> <li>relieves occasional constipation (irregularity)</li> <li>generally produces a bowel movement in 1 to 3 days</li> </ul> <p><b>Warnings</b></p> <p>Allergy alert: Do not use if you are allergic to polyethylene glycol</p> <p>Do not use if you have kidney disease, except under the advice and supervision of a doctor</p> <p>Ask a doctor before use if you have</p> <ul style="list-style-type: none"> <li>nausea, vomiting or abdominal pain</li> <li>a sudden change in bowel habits that lasts over 2 weeks</li> <li>irritable bowel syndrome</li> </ul> <p>Ask a doctor or pharmacist before use if you are taking a prescription drug</p> <p>When using this product you may have loose, watery, more frequent stools</p> <p>Stop use and ask a doctor if</p> <ul style="list-style-type: none"> <li>you have rectal bleeding or your nausea, bloating, cramping or abdominal pain gets worse. These may be signs of a serious condition.</li> <li>you get diarrhea</li> <li>you need to use a laxative for longer than 1 week</li> </ul> <p>If pregnant or breast-feeding, ask a health professional before use.</p>	<p><b>Drug Facts (continued)</b></p> <p>Keep out of reach of children. In case of overdose, get medical help or contact a Poison Control Center right away (1-800-222-1222).</p> <p><b>Directions</b></p> <ul style="list-style-type: none"> <li>do not take more than directed unless advised by your doctor</li> <li>adults and children 17 years of age and older:             <ul style="list-style-type: none"> <li>use once a day</li> <li>stir and dissolve one packet of powder (17 g) in any 4 to 8 ounces of beverage (cold, hot or room temperature) then drink</li> <li>do not combine with starch-based thickeners used for difficulty swallowing</li> <li>ensure that the powder is fully dissolved before drinking</li> <li>do not drink if there are any clumps</li> <li>do not use more than 7 days</li> </ul> </li> <li>children 16 years of age or under: ask a doctor</li> </ul> <p><b>Other information</b></p> <ul style="list-style-type: none"> <li>store at 20°-25°C (68°-77°F)</li> <li>tamper-evident: do not use if printed foil pouch is open or broken</li> </ul> <p><b>Inactive ingredients</b> none</p> <p><b>Questions or comments?</b> 1-800-719-9260</p>
--	---

\*This product is not manufactured or distributed by Bayer HealthCare LLC, distributor of MiraLAX®.

	<b>GLUTEN FREE</b>	<b>Unflavored Sugar Free</b>	Dissolves In Any Beverage
	30 Pre-Measured Unflavored Single Doses		Travel Size Packets
Polyethylene Glycol 3350 increases frequency of bowel movements and softens the stool.			

**SKY** Distributed By:  
McKesson Corporation dba SKY Packaging  
Memphis, TN 38141

REV 03/2022

No copy area

Glue area  
No print  
No varnish

**SKY PEG3350**  
polyethylene glycol 3350 powder, for solution

**Product Information**

<b>Product Type</b>	HUMAN OTC DRUG	<b>Item Code (Source)</b>	NDC:63739-198
<b>Route of Administration</b>	ORAL		

**Active Ingredient/Active Moiety**

<b>Ingredient Name</b>	<b>Basis of Strength</b>	<b>Strength</b>
<b>POLYETHYLENE GLYCOL 3350</b> (UNII: G2M7P15E5P) (POLYETHYLENE GLYCOL 3350 - UNII:G2M7P15E5P)	POLYETHYLENE GLYCOL 3350	17 g in 17 g

**Product Characteristics**

<b>Color</b>	WHITE	<b>Score</b>	
<b>Shape</b>		<b>Size</b>	
<b>Flavor</b>		<b>Imprint Code</b>	
<b>Contains</b>			

**Packaging**

#	Item Code	Package Description	Marketing Start Date	Marketing End Date
1	NDC:63739-198-61	30 in 1 CARTON	06/08/2020	
1	NDC:63739-198-62	17 g in 1 POUCH; Type 0: Not a Combination Product		

**Marketing Information**

Marketing Category	Application Number or Monograph Citation	Marketing Start Date	Marketing End Date
ANDA	ANDA090685	06/08/2020	

**Labeler** - McKesson Corporation dba SKY Packaging (140529962)

Revised: 4/2022

McKesson Corporation dba SKY Packaging