

LONG-LASTING WICKED FRESH - COOL PEPPERMINT- sodium monofluorophosphate paste, dentifrice

LONG-LASTING WICKED FRESH - SPEARMINT ICE- sodium monofluorophosphate paste, dentifrice

Tom's of Maine, Inc.

Disclaimer: Most OTC drugs are not reviewed and approved by FDA, however they may be marketed if they comply with applicable regulations and policies. FDA has not evaluated whether this product complies.

**Tom's
OF MAINE™
WICKED FRESH!™
fluoride toothpaste**

Drug Facts

Active ingredient

Sodium monofluorophosphate 0.76% (0.14% w/v fluoride ion)

Purpose

Anticavity

Use

helps protect against cavities

Warnings

Keep out of reach of children under 6 years of age.

If more than used for brushing is accidentally swallowed, get medical help or dial (412) 390-3381 right away (Poison Control Center).

Directions

adults and children 2 years of age and older	brush teeth thoroughly, preferably after each meal or at least twice a day, or as directed by a dentist or physician
children 2 to 6 years	use only a pea-sized amount and supervise child's brushing and rinsing (to minimize swallowing)
children under 2 years	ask a dentist or physician

Inactive ingredients

glycerin, water, hydrated silica, calcium carbonate, xylitol, sodium lauryl sulfate, *Mentha piperita* (peppermint) oil and other natural flavors, *Chondrus crispus* (carrageenan), *Glycyrrhiza uralensis* (licorice) root extract.

Questions?

1-800-FOR-TOMS (1-800-367-8667) M - F 8:30 a.m. - 5:30 p.m. ET

PRINCIPAL DISPLAY PANEL - 133 g Carton

SINCE 1970

**Tom's
OF MAINE™**

long-lasting | natural

WICKED FRESH!™

cavity protection | fresh breath

fluoride toothpaste

cool peppermint

NET WT 4.7 OZ (133 g)



natural
long-lasting

WICKED FRESH!

cavity protection
fresh breath

fluoride toothpaste
cool peppermint



NET WT 4.7 OZ (133 g)

What makes a product good? At Tom's, it includes how we make it.



No animal testing or animal ingredients.



We share every ingredient, its purpose, and its source at www.tomsofmaine.com.



Sustainable practices are a priority in every aspect of our business.



No artificial colors, flavors, fragrances, or preservatives.



We strive to maximize recycled content and recyclability of our packaging.



5% (12 days) of employee time to volunteering. 10% of profits to human and environmental goodness.



Tom's of Maine™ Goodness Day

You asked – we listened!

This tube is easier to use than our previous tube. Learn more about how this tube reinforces our commitment to environmental stewardship at:

www.tomsofmaine.com

Find us on:



long-lasting | natural

WICKED FRESH!

cavity protection | fresh breath

fluoride toothpaste

cool peppermint



NET WT 4.7 OZ (133 g)

Drug Facts

Active ingredient Purpose
Sodium monofluorophosphate 0.76% (0.14% w/v fluoride ion) Anticavity

Use helps protect against cavities

Warnings

Keep out of reach of children under 6 years of age. If more than used for brushing is accidentally swallowed, get medical help or dial (412) 390-3381 right away (Poison Control Center).

Directions

Drug Facts (continued)

adults and children 2 years of age and older brush teeth thoroughly, preferably after each meal or at least twice a day, or as directed by a dentist or physician

children 2 to 6 years use only a pea-sized amount and supervise child's brushing and rinsing (to minimize swallowing)

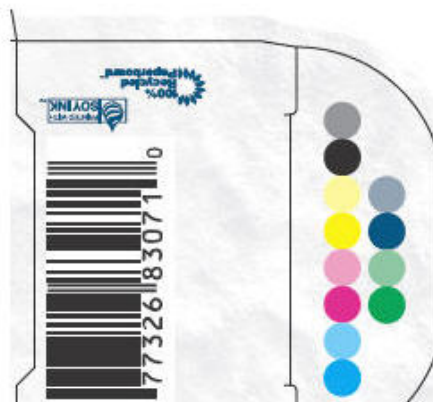
children under 2 years ask a dentist or physician

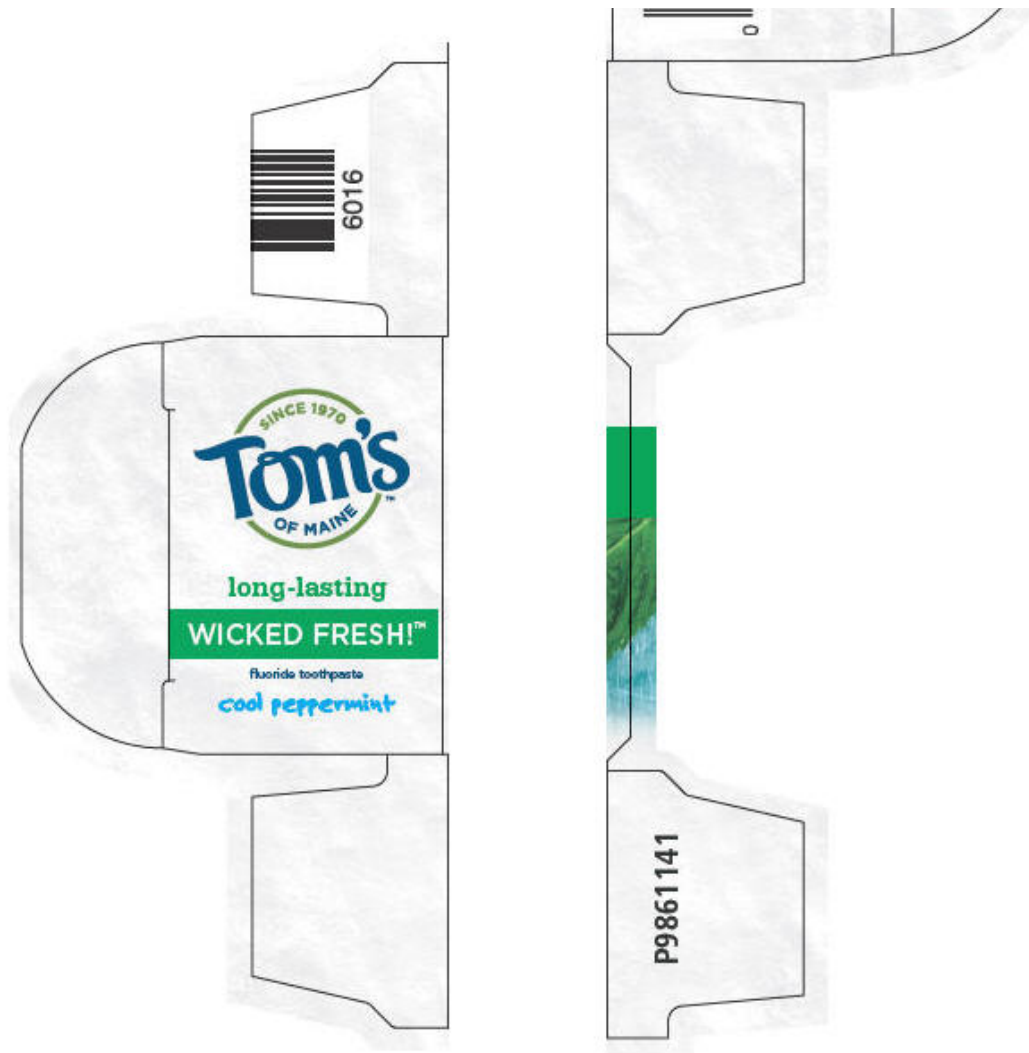
Inactive ingredients glycerin, water, hydrated silica, calcium carbonate, xylitol, sodium lauryl sulfate, *Mentha piperita* (peppermint) oil and other natural flavors, *Chondrus crispus* (carrageenan), *Glycyrrhiza uralensis* (licorice) root extract.

Questions? 1-800-FOR-TOMS (1-800-367-8667) M - F 8:30 a.m. - 5:30 p.m. ET

© 2010 Tom's of Maine, Inc.
302 Lafayette Ctr.
Kennebunk, ME 04043

Made in U.S.A.





PRINCIPAL DISPLAY PANEL - 133 g Carton

SINCE 1970

**Tom's
OF MAINE™**

long-lasting | natural

WICKED FRESH!™

cavity protection | fresh breath

fluoride toothpaste

spearmint ice

NET WT 4.7 OZ (133 g)



natural
long-lasting

**WICKED
FRESH!**

cavity protection
fresh breath

fluoride toothpaste
spearmint ice



NET WT 4.7 OZ (133 g)

What makes a product good? At Tom's, it includes how we make it.



No animal testing or animal ingredients.



We share every ingredient, its purpose, and its source at www.tomsofmaine.com.



Sustainable practices are a priority in every aspect of our business.



No artificial colors, flavors, fragrance, or preservatives.



We strive to maximize recycled content and recyclability of our packaging.



5% (12 days) of employee time to volunteering. 10% of profits to human and environmental goodness.



Tom's of Maine™ Goodness Day

You asked – we listened!

This tube is easier to use than our previous tube. Learn more about how this tube reinforces our commitment to environmental stewardship at: www.tomsofmaine.com

Find us on:



long-lasting | natural

WICKED FRESH!

cavity protection | fresh breath

fluoride toothpaste

spearmint ice



NET WT 4.7 OZ (133 g)

Drug Facts

Active ingredient Purpose
Sodium monofluorophosphate 0.76% (0.14% w/v fluoride ion) Anticavity

Use helps protect against cavities

Warnings

Keep out of reach of children under 6 years of age. If more than used for brushing is accidentally swallowed, get medical help or dial (412) 390-3381 right away (Poison Control Center).

Directions

Drug Facts (continued)

adults and children 2 years of age and older brush teeth thoroughly, preferably after each meal or at least twice a day, or as directed by a dentist or physician

children 2 to 6 years use only a pea-sized amount and supervise child's brushing and rinsing (to minimize swallowing)

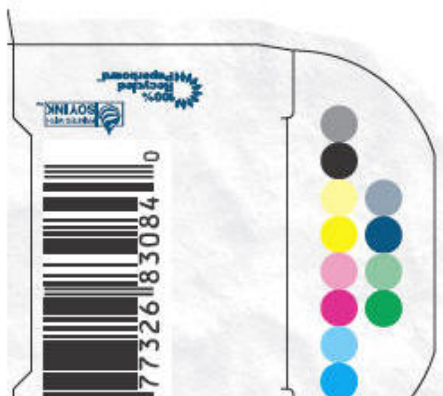
children under 2 years ask a dentist or physician

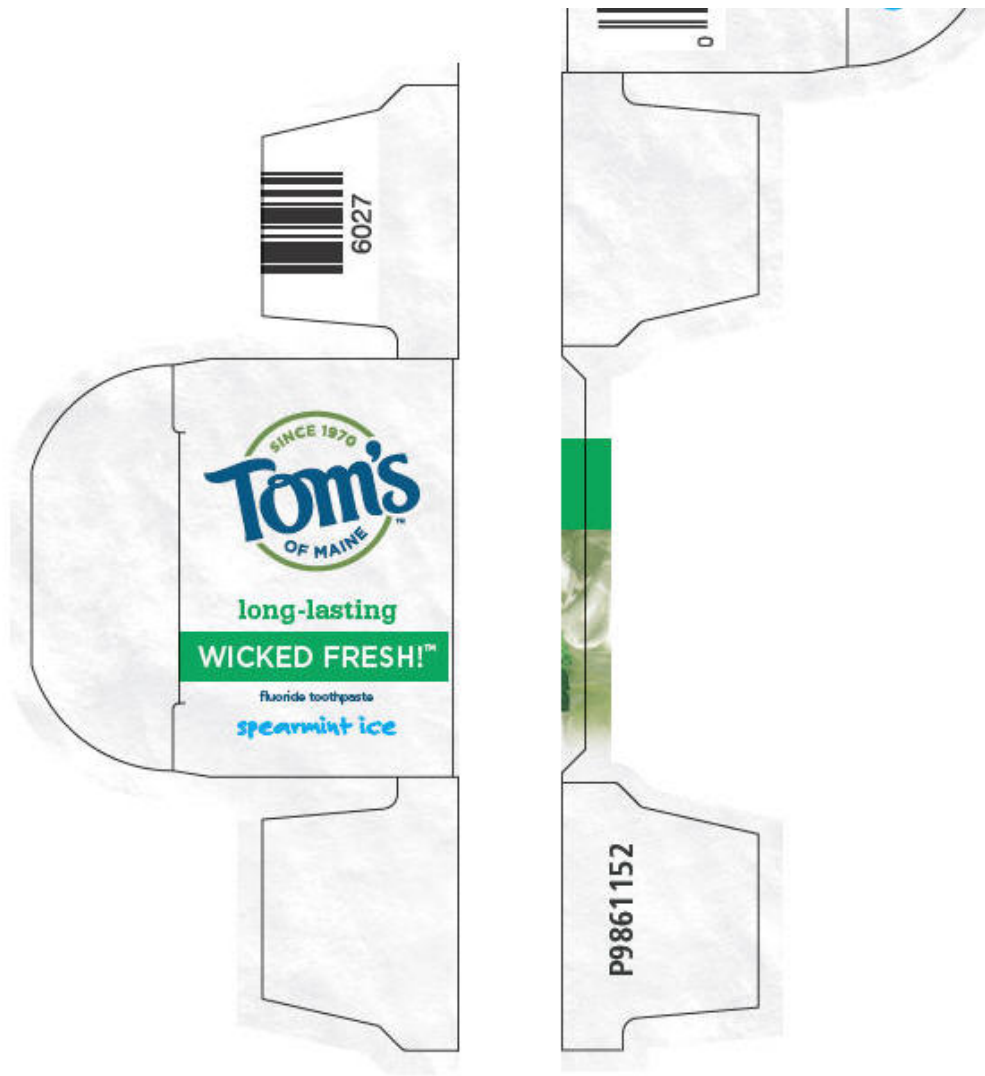
Inactive ingredients glycerin, water, hydrated silica, calcium carbonate, xylitol, sodium lauryl sulfate, *Mentha viridis* (spearmint) leaf oil and other natural flavors, *Chondrus crispus* (carrageenan), *Glycyrrhiza uralensis* (licorice) root extract.

Questions? 1-800-FOR-TOMS (1-800-367-8667) M - F 8:30 a.m. - 5:30 p.m. ET

© 2010 Tom's of Maine, Inc.
302 Lafayette Ctr.
Kennebunk, ME 04043

Made in U.S.A.





LONG-LASTING WICKED FRESH - COOL PEPPERMINT

sodium monofluorophosphate paste, dentifrice

Product Information

Product Type	HUMAN OTC DRUG	Item Code (Source)	NDC:51009-146
Route of Administration	DENTAL		

Active Ingredient/Active Moiety

Ingredient Name	Basis of Strength	Strength
Sodium monofluorophosphate (UNII: C810JCZ56Q) (Fluoride Ion - UNII:Q80VPU408O)	Sodium monofluorophosphate	.0076 g in 1 g

Inactive Ingredients

Ingredient Name	Strength
Glycerin (UNII: PDC6A3C0OX)	
Water (UNII: 059QF0KO0R)	
Calcium carbonate (UNII: H0G9379FGK)	

Xylitol (UNII: VCQ006KQ1E)	
Hydrated Silica (UNII: Y6O7T4G8P9)	
Carrageenan (UNII: 5C69YCD2YJ)	
Sodium Lauryl Sulfate (UNII: 368GB5141J)	

Product Characteristics

Color	WHITE	Score	
Shape		Size	
Flavor	PEPPERMINT (Cool Peppermint)	Imprint Code	
Contains			

Packaging

#	Item Code	Package Description	Marketing Start Date	Marketing End Date
1	NDC:51009-146-47	1 in 1 CARTON		
1		133 g in 1 TUBE		

Marketing Information

Marketing Category	Application Number or Monograph Citation	Marketing Start Date	Marketing End Date
OTC MONOGRAPH FINAL	part355	05/06/2011	

LONG-LASTING WICKED FRESH - SPEARMINT ICE

sodium monofluorophosphate paste, dentifrice

Product Information

Product Type	HUMAN OTC DRUG	Item Code (Source)	NDC:51009-145
Route of Administration	DENTAL		

Active Ingredient/Active Moiety

Ingredient Name	Basis of Strength	Strength
Sodium monofluorophosphate (UNII: C810JCZ56Q) (Fluoride Ion - UNII:Q80VPU408O)	Sodium monofluorophosphate	.0076 g in 1 g

Inactive Ingredients

Ingredient Name	Strength
Glycerin (UNII: PDC6A3C0OX)	
Water (UNII: 059QF0KO0R)	
Calcium carbonate (UNII: H0G9379FGK)	
Xylitol (UNII: VCQ006KQ1E)	
Hydrated Silica (UNII: Y6O7T4G8P9)	
Carrageenan (UNII: 5C69YCD2YJ)	
Sodium Lauryl Sulfate (UNII: 368GB5141J)	

Product Characteristics

Color	WHITE	Score	
Shape		Size	
Flavor	SPEARMINT (Spearmint Ice)	Imprint Code	
Contains			

Packaging

#	Item Code	Package Description	Marketing Start Date	Marketing End Date
1	NDC:51009-145-47	1 in 1 CARTON		
1		133 g in 1 TUBE		

Marketing Information

Marketing Category	Application Number or Monograph Citation	Marketing Start Date	Marketing End Date
OTC MONOGRAPH FINAL	part355	05/06/2011	

Labeler - Tom's of Maine, Inc. (052764354)**Establishment**

Name	Address	ID/FEI	Business Operations
Tom's of Maine, Inc.		052764354	MANUFACTURE

Revised: 5/2011

Tom's of Maine, Inc.