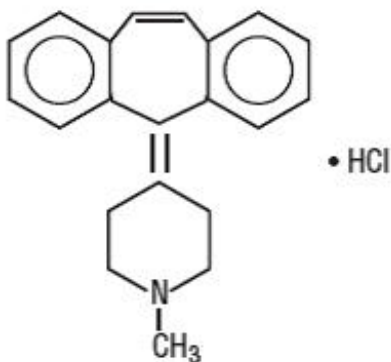


CYPROHEPTADINE HYDROCHLORIDE - cyproheptadine hydrochloride tablet
TRUPHARMA, LLC

CYPROHEPTADINE HYDROCHLORIDE TABLETS USP

DESCRIPTION

Cyproheptadine HCl USP, is an antihistaminic and antiserotonergic agent. Cyproheptadine hydrochloride USP is a white to slightly yellowish crystalline powder, with a molecular weight of 350.89, which is slightly soluble in water, freely soluble in methanol, sparingly soluble in alcohol, soluble in chloroform, and practically insoluble in ether. It is the sesquihydrate of 4-(5H dibenzo[a,d]cyclohepten-5-ylidene)-1-methylpiperidine hydrochloride. The molecular formula of the anhydrous salt is $C_{21}H_{21}N \cdot HCl$ and the structural formula of the anhydrous salt is:



$C_{21}H_{21}N \cdot HCl$

M.W. 350.89

Cyproheptadine hydrochloride USP is available for oral administration in 4 mg tablets. Inactive ingredients include: lactose monohydrate, magnesium stearate, microcrystalline cellulose, and sodium starch glycolate.

CLINICAL PHARMACOLOGY

Cyproheptadine is a serotonin and histamine antagonist with anticholinergic and sedative effects. Antiserotonin and antihistamine drugs appear to compete with serotonin and histamine, respectively, for receptor sites.

Pharmacokinetics and Metabolism

After a single 4 mg oral dose of ^{14}C -labelled cyproheptadine HCl in normal subjects, given as tablets, 2 to 20% of the radioactivity was excreted in the stools. Only about 34% of the stool radioactivity was unchanged drug, corresponding to less than 5.7% of the dose. At least 40% of the administered radioactivity was excreted in the urine. No detectable amounts of unchanged drug were present in the urine of patients on chronic 12 to 20 mg daily doses. The principle metabolite found in human urine has been identified as a quaternary ammonium glucuronide conjugate of cyproheptadine. Elimination is diminished in renal insufficiency.

INDICATIONS AND USAGE

Perennial and seasonal allergic rhinitis

Vasomotor rhinitis

Allergic conjunctivitis due to inhalant allergens and foods

Mild, uncomplicated allergic skin manifestations of urticarial and angioedema.

Amelioration of allergic reactions to blood or plasma

Cold urticaria

Dermatographism

As therapy for anaphylactic reactions adjunctive to epinephrine and other standard measures after the acute manifestations have been controlled.

CONTRAINDICATIONS

Newborn or Premature Infants

This drug should not be used in newborn or premature infants.

Nursing Mothers

Because of the higher risk of antihistamines for infants generally and for newborns and prematures in particular, antihistamine therapy is contraindicated in nursing mothers.

Other Conditions

Hypersensitivity to cyproheptadine and other drugs of similar chemical structure.

Monoamine oxidase inhibitor therapy (**See DRUG INTERACTIONS.**)

Angle-closure glaucoma

Stenosing peptic ulcer

Symptomatic prostatic hypertrophy

Bladder neck obstruction

Pyloroduodenal obstruction

Elderly, debilitated patients

WARNINGS

Pediatric Patients

Overdosage of antihistamines, particularly in infants and young children, may produce hallucinations, central nervous system depression, convulsions, respiratory and cardiac arrest, and death.

Antihistamines may diminish mental alertness; conversely, particularly, in the young child, they may occasionally produce excitation.

CNS Depressants

Antihistamines may have additive effects with alcohol and other CNS depressants, e.g., hypnotics, sedatives, tranquilizers, antianxiety agents.

Activities Requiring Mental Alertness

Patients should be warned about engaging in activities requiring mental alertness and motor

coordination, such as driving a car or operating machinery. Antihistamines are more likely to cause dizziness, sedation, and hypotension in elderly patients (see PRECAUTIONS, Geriatric Use).

PRECAUTIONS

General

Cyproheptadine has an atropine-like action and, therefore, should be used with caution in patients with:

History of bronchial asthma

Increased intraocular pressure

Hyperthyroidism

Cardiovascular disease

Hypertension

Information for patients

Antihistamines may diminish mental alertness; conversely, particularly, in the young child, they may occasionally produce excitation. Patients should be warned about engaging in activities requiring mental alertness and motor coordination, such as driving a car or operating machinery.

Drug interactions

MAO inhibitors prolong and intensify the anticholinergic effects of antihistamines.

Antihistamines may have additive effects with alcohol and other CNS depressants, e.g., hypnotics, sedatives, tranquilizers, antianxiety agents.

Carcinogenesis, mutagenesis, impairment of fertility

Long-term carcinogenic studies have not been done with cyproheptadine. Cyproheptadine had no effect on fertility in a two-litter study in rats or a two generation study in mice at about 10 times the human dose.

Cyproheptadine did not produce chromosome damage in human lymphocytes or fibroblasts in vitro; high doses (10-4M) were cytotoxic. Cyproheptadine did not have any mutagenic effect in the Ames microbial mutagen test; concentrations of above 500 mcg/plate inhibited bacterial growth.

Pregnancy

Pregnancy Category B

Reproduction studies have been performed in rabbits, mice, and rats at oral or subcutaneous doses up to 32 times the maximum recommended human oral dose and have revealed no evidence of impaired fertility or harm to the fetus due to cyproheptadine. Cyproheptadine has been shown to be fetotoxic in rats when given by intraperitoneal injection in doses four times the maximum recommended human oral dose. Two studies in pregnant women, however, have not shown that cyproheptadine increases the risk of abnormalities when administered during the first, second and third trimesters of pregnancy. No teratogenic effects were observed in any of the newborns. Nevertheless, because the studies in humans cannot rule out the possibility of harm, cyproheptadine should be used during pregnancy only if clearly needed.

Nursing mothers

It is not known whether this drug is excreted in human milk. Because many drugs are excreted in human milk, and because of the potential for serious adverse reactions in nursing infants from cyproheptadine, a decision should be made whether to discontinue nursing or to discontinue the drug, taking into account

the importance of the drug to the mother (see CONTRAINDICATIONS).

Pediatric use

Safety and effectiveness in pediatric patients below the age of two have not been established (see CONTRAINDICATIONS, **Newborn or Premature Infants**, and WARNINGS, Pediatric Patients).

Geriatric use

Clinical studies of cyproheptadine HCl tablets did not include sufficient numbers of subjects aged 65 and over to determine whether they respond differently from younger subjects. Other reported clinical experience has not identified differences in responses between the elderly and younger patients. In general, dose selection for an elderly patient should be cautious, usually starting at the low end of the dosing range, reflecting the greater frequency of decreased hepatic, renal, or cardiac function, and of concomitant disease or other drug therapy (see WARNINGS, Activities Requiring Mental Alertness).

ADVERSE REACTIONS

Adverse reactions which have been reported with the use of antihistamines are as follows:

Central Nervous System

Sedation and sleepiness (often transient), dizziness, disturbed coordination, confusion, restlessness, excitation, nervousness, tremor, irritability, insomnia, paresthesias, neuritis, convulsions, euphoria, hallucinations, hysteria, faintness.

Integumentary

Allergic manifestation of rash and edema, excessive perspiration, urticaria, photosensitivity.

Special Senses

Acute labyrinthitis, blurred vision, diplopia, vertigo, tinnitus.

Cardiovascular

Hypotension, palpitation, tachycardia, extrasystoles, anaphylactic shock.

Hematologic

Hemolytic anemia, leukopenia, agranulocytosis, thrombocytopenia.

Digestive System

Cholestasis, hepatic failure, hepatitis, hepatic function abnormality, dryness of mouth, epigastric distress, anorexia, nausea, vomiting, diarrhea, constipation, jaundice.

Genitourinary

Urinary frequency, difficult urination, urinary retention, early menses.

Respiratory

Dryness of nose and throat, thickening of bronchial secretions, tightness of chest and wheezing, nasal stuffiness.

Miscellaneous

Fatigue, chills, headache, increased appetite/weight gain.

OVERDOSAGE

Antihistamine overdosage reactions may vary from central nervous system depression to stimulation especially in pediatric patients. Also, atropine-like signs and symptoms (dry mouth; fixed, dilated pupils; flushing, etc.) as well as gastrointestinal symptoms may occur.

If vomiting has not occurred spontaneously, the patient should be induced to vomit with syrup of ipecac.

If patient is unable to vomit, perform gastric lavage followed by activated charcoal. Isotonic or 1/2 isotonic saline is the lavage of choice. Precautions against aspiration must be taken especially in infants and children.

When life threatening CNS signs and symptoms are present, intravenous physostigmine salicylate may be considered. Dosage and frequency of administration are dependent on age, clinical response, and recurrence after response. (See package circulars for physostigmine products.)

Saline cathartics, as milk of magnesia, by osmosis draw water into the bowel and, therefore, are valuable for their action in rapid dilution of bowel content. *Stimulants should not be used.*

Vasopressors may be used to treat hypotension.

The oral LD₅₀ of cyproheptadine is 123 mg/kg, and 295 mg/kg in the mouse and rat, respectively.

DOSAGE AND ADMINISTRATION

DOSAGE SHOULD BE INDIVIDUALIZED ACCORDING TO THE NEEDS AND THE RESPONSE OF THE PATIENT.

Each tablet contains 4 mg of cyproheptadine hydrochloride.

Pediatric Patients

Age 2 to 6 years

The total daily dosage for pediatric patients may be calculated on the basis of body weight or body area using approximately 0.25 mg/kg/day or 8 mg per square meter of body surface (8 mg/m²).

The usual dose is 2 mg (1/2 tablet) two or three times a day, adjusted as necessary to the size and response of the patient. The dose is not to exceed 12 mg a day.

Age 7 to 14 years

The usual dose is 4 mg (1 tablet) two or three times a day adjusted as necessary to the size and response of the patient. The dose is not to exceed 16 mg a day.

Adults

The total daily dose for adults should not exceed 0.5 mg/kg/day. The therapeutic range is 4 to 20 mg a day, with the majority of patients requiring 12 to 16 mg a day. An occasional patient may require as much as 32 mg a day for adequate relief. It is suggested that dosage be initiated with 4 mg (1 tablet) three times a day and adjusted according to the size and response of the patient.

HOW SUPPLIED

Cyproheptadine Hydrochloride Tablets USP are available as white to off white, round, flat-faced, beveled edged tablets, debossed with "MCR and 109" separated by functional score on one side and plain on the other side, containing 4 mg of cyproheptadine HCl packaged in bottles of 100 (NDC 52817-210-10) and 500 tablets (NDC 52817-210-50).

PHARMACIST: Dispense in a well-closed container as defined in the USP, with a child-resistant closure (as required).



Store at 20° to 25°C (68° to 77°F) [See USP Controlled Room Temperature].



Manufactured by:
Appco Pharma LLC
Piscataway, NJ 08854

Distributed by:
TruPharma, LLC
Tampa, FL 33609

Revised: 06/2019

200223
Ver-03

<p>NDC 52817-210-10</p> <p>Cyproheptadine Hydrochloride Tablets, USP</p> <p>4 mg</p>	<p>Each tablet contains: 4 mg cyproheptadine hydrochloride USP. Usual Dosage: See package insert for full prescribing information. Store at 20° to 25°C (68° to 77°F) [See USP Controlled Room Temperature]. Dispense in a well-closed container as defined in the USP, with a child-resistant closure (as required). KEEP THIS AND ALL MEDICATIONS OUT OF THE REACH OF CHILDREN. Manufactured by: Appco Pharma LLC Piscataway, NJ 08854 Distributed by: TruPharma, LLC Tampa, FL 33609 200222 Ver-03</p>	 <p>3 52817 21010 4</p>	<p>No Varnish</p>
	<p>Rx Only 100 Tablets</p>	<p>Rev. 06/2019</p>	

<p>NDC 52817-210-50</p> <p>Cyproheptadine Hydrochloride Tablets, USP</p> <p>4 mg</p>	<p>Each tablet contains: 4 mg cyproheptadine hydrochloride USP. Usual Dosage: See package insert for full prescribing information. Store at 20° to 25°C (68° to 77°F) [See USP Controlled Room Temperature]. Dispense in a well-closed container as defined in the USP, with a child-resistant closure (as required). KEEP THIS AND ALL MEDICATIONS OUT OF THE REACH OF CHILDREN. Manufactured by: Appco Pharma LLC Piscataway, NJ 08854 Distributed by: TruPharma, LLC Tampa, FL 33609 200224 Ver-03</p>	 <p>3 52817 21050 0</p>	<p>No Varnish</p>
	<p>Rx Only 500 Tablets</p>	<p>Rev. 06/2019</p>	

CYPROHEPTADINE HYDROCHLORIDE
cyproheptadine hydrochloride tablet

Product Information

Product Type	HUMAN PRESCRIPTION DRUG	Item Code (Source)	NDC:528 17-210
Route of Administration	ORAL		

Active Ingredient/Active Moiety

Ingredient Name	Basis of Strength	Strength
CYPROHEPTADINE HYDROCHLORIDE (UNII: NJ82J0F8QC) (CYPROHEPTADINE - UNII:2YHB6175DO)	CYPROHEPTADINE HYDROCHLORIDE	4 mg

Inactive Ingredients

Ingredient Name	Strength
CELLULOSE, MICROCRYSTALLINE (UNII: OP1R32D61U)	
LACTOSE MONOHYDRATE (UNII: EWQ57Q8I5X)	
MAGNESIUM STEARATE (UNII: 70097M6I30)	
SODIUM STARCH GLYCOLATE TYPE A POTATO (UNII: 5856J3G2A2)	

Product Characteristics

Color	WHITE (White to Off-White)	Score	no score
Shape	ROUND	Size	7mm
Flavor		Imprint Code	MCR;109
Contains			

Packaging

#	Item Code	Package Description	Marketing Start Date	Marketing End Date
1	NDC:528 17-210-10	100 in 1 BOTTLE, PLASTIC; Type 0: Not a Combination Product	01/17/2017	
2	NDC:528 17-210-50	500 in 1 BOTTLE, PLASTIC; Type 0: Not a Combination Product	01/17/2017	

Marketing Information

Marketing Category	Application Number or Monograph Citation	Marketing Start Date	Marketing End Date
ANDA	ANDA206553	01/17/2017	

Labeler - TRUPHARMA, LLC (078533947)**Registrant** - TWI Pharmaceuticals, Inc. (658402052)**Establishment**

Name	Address	ID/FEI	Business Operations
-------------	----------------	---------------	----------------------------

Appco Pharma LLC	078510186	ANALYSIS(52817-210) , RELABEL(52817-210) , REPACK(52817-210) , MANUFACTURE(52817-210) , PACK(52817-210)
---------------------	-----------	--

Revised: 7/2019

TRUPHARMA, LLC