

**RIZATRIPTAN BENZOATE- rizatriptan benzoate tablet**  
**Glenmark Pharmaceuticals Inc., USA**

-----

**HIGHLIGHTS OF PRESCRIBING INFORMATION**

**These highlights do not include all the information needed to use rizatriptan benzoate tablets safely and effectively. See full prescribing information for rizatriptan benzoate tablets.**

**Rizatriptan Benzoate Tablets, for oral use**

**Initial U.S. Approval: 1998**

----- **RECENT MAJOR CHANGES** -----

Indications and Usage

Acute Treatment of Migraine (1) 12/2011

----- **INDICATIONS AND USAGE** -----

Rizatriptan benzoate tablets are a serotonin (5-HT)<sub>1B/1D</sub> receptor agonist (triptan) indicated for the acute treatment of migraine with or without aura in adults and in pediatric patients 6 to 17 years of age (1)

Limitations of Use:

Use only after clear diagnosis of migraine has been established (1)

Not indicated for the prophylactic therapy of migraine (1)

Not indicated for the treatment of cluster headache (1)

----- **DOSAGE AND ADMINISTRATION** -----

Adults: 5 or 10 mg single dose; separate repeat doses by at least two hours; maximum dose in a 24-hour period: 30 mg (2.1)

Adjust dose if co-administered with propranolol (2.4)

----- **DOSAGE FORMS AND STRENGTHS** -----

Rizatriptan benzoate tablets: 5 mg and 10 mg (3)

----- **CONTRAINDICATIONS** -----

History of ischemic heart disease or coronary artery vasospasm (4)

History of stroke or transient ischemic attack (4)

Peripheral vascular disease (4)

Ischemic bowel disease (4)

Uncontrolled hypertension (4)

Recent (within 24 hours) use of another 5-HT<sub>1</sub> agonist (e.g., another triptan), or of an ergotamine-containing medication (4)

Hemiplegic or basilar migraine (4)

MAO-A inhibitor used in the past 2 weeks (4)

Hypersensitivity to rizatriptan benzoate (4)

----- **WARNINGS AND PRECAUTIONS** -----

Myocardial Ischemia, Myocardial Infarction, and Prinzmetal's Angina: Perform cardiac evaluation in patients with multiple cardiovascular risk factors (5.1)

Arrhythmias: Discontinue dosing if occurs (5.2)

Chest/throat/neck/jaw pain, tightness, pressure, or heaviness; Generally not associated with myocardial ischemia; Evaluate patients at high risk (5.3)

Cerebral hemorrhage, subarachnoid hemorrhage, and stroke: Discontinue dosing if occurs (5.4)

Gastrointestinal ischemic events, peripheral vasospastic reactions: Discontinue dosing if occurs (5.5)

Medication Overuse Headache: Detoxification may be necessary (5.6)

Serotonin Syndrome: Discontinue dosing if occurs (5.7)

----- **ADVERSE REACTIONS** -----

The most common adverse reactions in adults were (incidence ≥5% and greater than placebo): asthenia/fatigue,

somnolence, pain/pressure sensation and dizziness (6.1)

To report SUSPECTED ADVERSE REACTIONS, contact Glenmark Pharmaceuticals Inc., USA at 1(888)721-7115 or FDA at 1-800-FDA-1088 or [www.fda.gov/medwatch](http://www.fda.gov/medwatch)

----- **USE IN SPECIFIC POPULATIONS** -----

Pregnancy: Based on animal data, may cause fetal harm (8.1)

See 17 for **PATIENT COUNSELING INFORMATION** and **FDA-approved patient labeling**.

Revised: 11/2015

---

**FULL PRESCRIBING INFORMATION: CONTENTS\***

**1 INDICATIONS AND USAGE**

**2 DOSAGE AND ADMINISTRATION**

2.1 Dosing Information in Adults

2.2 Dosing Information in Pediatric Patients (Age 6 to 17 Years)

2.4 Dosage Adjustment for Patients on Propranolol

**3 DOSAGE FORMS AND STRENGTHS**

**4 CONTRAINDICATIONS**

**5 WARNINGS AND PRECAUTIONS**

5.1 Myocardial Ischemia, Myocardial Infarction, and Prinzmetal's Angina

5.2 Arrhythmias

5.3 Chest, Throat, Neck and/or Jaw Pain/Tightness/Pressure

5.4 Cerebrovascular Events

5.5 Other Vasospasm Reactions

5.6 Medication Overuse Headache

5.7 Serotonin Syndrome

5.8 Increase in Blood Pressure

**6 ADVERSE REACTIONS**

6.1 Clinical Trials Experience

6.2 Postmarketing Experience

**7 DRUG INTERACTIONS**

7.1 Propranolol

7.2 Ergot-Containing Drugs

7.3 Other 5-HT<sub>1</sub> Agonists

7.4 SSRIs/SNRIs and Serotonin Syndrome

7.5 Monoamine Oxidase Inhibitors

**8 USE IN SPECIFIC POPULATIONS**

8.1 Pregnancy

8.3 Nursing Mothers

8.4 Pediatric Use

8.5 Geriatric Use

**10 OVERDOSAGE**

**11 DESCRIPTION**

**12 CLINICAL PHARMACOLOGY**

12.1 Mechanism of Action

12.3 Pharmacokinetics

**13 NONCLINICAL TOXICOLOGY**

13.1 Carcinogenesis, Mutagenesis, Impairment of Fertility

**14 CLINICAL STUDIES**

14.1 Adults

14.2 Pediatric Patients 6 to 17 Years of Age

## 16 HOW SUPPLIED/STORAGE AND HANDLING

Storage

## 17 PATIENT COUNSELING INFORMATION

Risk of Myocardial Ischemia and/or Infarction, Prinzmetal's Angina, Other Vasospasm-related Events, and Cerebrovascular Events

Serotonin Syndrome

Pregnancy

Nursing Mothers

Ability To Perform Complex Tasks

Medication Overuse Headache

\* Sections or subsections omitted from the full prescribing information are not listed.

---

## FULL PRESCRIBING INFORMATION

### 1 INDICATIONS AND USAGE

Rizatriptan benzoate tablets are indicated for the acute treatment of migraine with or without aura in adults and in pediatric patients 6 to 17 years old.

*Information related to usage of rizatriptan benzoate in pediatric patients (6 to 17 years old) is approved for Merck & Co., Inc.'s Rizatriptan Benzoate Tablets. However, due to Merck & Co., Inc.'s marketing exclusivity rights, this drug product is not labeled with that pediatric patient (6 to 17 years old) usage information.*

#### Limitations of Use

Rizatriptan benzoate tablets should only be used where a clear diagnosis of migraine has been established. If a patient has no response for the first migraine attack treated with rizatriptan benzoate tablets, the diagnosis of migraine should be reconsidered before rizatriptan benzoate tablets are administered to treat any subsequent attacks.

Rizatriptan benzoate tablets are not indicated for use in the management of hemiplegic or basilar migraine [see *Contraindications (4)*].

Rizatriptan benzoate tablets are not indicated for the prevention of migraine attacks.

Safety and effectiveness of rizatriptan benzoate tablets have not been established for cluster headache.

### 2 DOSAGE AND ADMINISTRATION

#### 2.1 Dosing Information in Adults

The recommended starting dose of rizatriptan benzoate tablets is either 5 mg or 10 mg for the acute treatment of migraines in adults. The 10 mg dose may provide a greater effect than the 5 mg dose, but may have a greater risk of adverse reactions [see *Clinical Studies (14.1)*].

#### Redosing in Adults

Although the effectiveness of a second dose or subsequent doses has not been established in placebo-controlled trials, if the migraine headache returns, a second dose may be administered 2 hours after the first dose. The maximum daily dose should not exceed 30 mg in any 24-hour period. The safety of treating, on average, more than four headaches in a 30-day period has not been established.

#### 2.2 Dosing Information in Pediatric Patients (Age 6 to 17 Years)

Information related to dosage of rizatriptan benzoate pediatric patients (6 to 17 years old) is approved for Merck & Co., Inc.'s Rizatriptan Benzoate Tablets. However, due to Merck & Co., Inc.'s marketing exclusivity rights, this drug product is not labeled with that dosage information.

## **2.4 Dosage Adjustment for Patients on Propranolol**

### Adult Patients

In adult patients taking propranolol, only the 5 mg dose of rizatriptan benzoate tablets is recommended, up to a maximum of 3 doses in any 24-hour period (15 mg) [see *Drug Interactions (7.1)* and *Clinical Pharmacology (12.3)*].

### Pediatric Patients

Dosage adjustment information of rizatriptan benzoate for pediatric patients (6 to 17 years old) taking propranolol is approved for Merck & Co., Inc.'s Rizatriptan Benzoate Tablets. However, due to Merck & Co., Inc.'s marketing exclusivity rights, this drug product is not labeled with that dosage adjustment information.

## **3 DOSAGE FORMS AND STRENGTHS**

### Rizatriptan Benzoate Tablets

5 mg tablets are light pink to reddish brown, mottled, round, uncoated tablets engraved with '465' on one side and plain on other side.

10 mg tablets are light pink to reddish brown, mottled, round, uncoated tablets engraved with '466' on one side and plain on other side.

## **4 CONTRAINDICATIONS**

Rizatriptan benzoate is contraindicated in patients with:

Ischemic coronary artery disease (angina pectoris, history of myocardial infarction, or documented silent ischemia), or other significant underlying cardiovascular disease [see *Warnings and Precautions (5.1)*].

Coronary artery vasospasm including Prinzmetal's angina [see *Warnings and Precautions (5.1)*].

History of stroke or transient ischemic attack (TIA) [see *Warnings and Precautions (5.4)*].

Peripheral vascular disease (PVD) [see *Warnings and Precautions (5.5)*].

Ischemic bowel disease [see *Warnings and Precautions (5.5)*].

Uncontrolled hypertension [see *Warnings and Precautions (5.8)*].

Recent use (i.e., within 24 hours) of another 5-HT<sub>1</sub> agonist, ergotamine-containing medication, or ergot-type medication (such as dihydroergotamine or methysergide) [see *Drug Interactions (7.2 and 7.3)*].

Hemiplegic or basilar migraine.

Concurrent administration or recent discontinuation (i.e., within 2 weeks) of a MAO-A inhibitor [see *Drug Interactions (7.5)* and *Clinical Pharmacology (12.3)*].

Hypersensitivity to rizatriptan benzoate (angioedema and anaphylaxis seen) [see *Adverse Reactions (6.2)*].

## **5 WARNINGS AND PRECAUTIONS**

### **5.1 Myocardial Ischemia, Myocardial Infarction, and Prinzmetal's Angina**

Rizatriptan benzoate should not be given to patients with ischemic or vasospastic coronary artery disease. There have been rare reports of serious cardiac adverse reactions, including acute myocardial infarction, occurring within a few hours following administration of rizatriptan benzoate. Some of these reactions occurred in patients without known coronary artery disease (CAD). 5-HT<sub>1</sub> agonists including rizatriptan benzoate may cause coronary artery vasospasm (Prinzmetal's Angina), even in patients without a history of CAD.

Triptan-naïve patients who have multiple cardiovascular risk factors (e.g., increased age, diabetes, hypertension, smoking, obesity, strong family history of CAD) should have a cardiovascular evaluation prior to receiving rizatriptan benzoate. If there is evidence of CAD or coronary artery vasospasm, rizatriptan benzoate should not be administered [*see Contraindications (4)*]. For patients who have a negative cardiovascular evaluation, consideration should be given to administration of the first rizatriptan benzoate dose in a medically-supervised setting and performing an electrocardiogram (ECG) immediately following rizatriptan benzoate administration. Periodic cardiovascular evaluation should be considered in intermittent long-term users of rizatriptan benzoate who have cardiovascular risk factors.

## **5.2 Arrhythmias**

Life-threatening disturbances of cardiac rhythm, including ventricular tachycardia and ventricular fibrillation leading to death, have been reported within a few hours following the administration of 5-HT<sub>1</sub> agonists. Discontinue rizatriptan benzoate if these disturbances occur.

## **5.3 Chest, Throat, Neck and/or Jaw Pain/Tightness/Pressure**

As with other 5-HT<sub>1</sub> agonists, sensations of tightness, pain, pressure, and heaviness in the precordium, throat, neck and jaw commonly occur after treatment with rizatriptan benzoate and are usually non-cardiac in origin. However, if a cardiac origin is suspected, patients should be evaluated. Patients shown to have CAD and those with Prinzmetal's variant angina should not receive 5-HT<sub>1</sub> agonists.

## **5.4 Cerebrovascular Events**

Cerebral hemorrhage, subarachnoid hemorrhage, and stroke have occurred in patients treated with 5-HT<sub>1</sub> agonists, and some have resulted in fatalities. In a number of cases, it appears possible that the cerebrovascular events were primary, the 5-HT<sub>1</sub> agonist having been administered in the incorrect belief that the symptoms experienced were a consequence of migraine, when they were not. Also, patients with migraine may be at increased risk of certain cerebrovascular events (e.g., stroke, hemorrhage, transient ischemic attack). Discontinue rizatriptan benzoate if a cerebrovascular event occurs.

As with other acute migraine therapies, before treating headaches in patients not previously diagnosed as migraineurs, and in migraineurs who present with atypical symptoms, care should be taken to exclude other potentially serious neurological conditions. Rizatriptan benzoate should not be administered to patients with a history of stroke or transient ischemic attack [*see Contraindications (4)*].

## **5.5 Other Vasospasm Reactions**

5-HT<sub>1</sub> agonists, including rizatriptan benzoate, may cause non-coronary vasospastic reactions, such as peripheral vascular ischemia, gastrointestinal vascular ischemia and infarction (presenting with abdominal pain and bloody diarrhea), splenic infarction, and Raynaud's syndrome. In patients who experience symptoms or signs suggestive of non-coronary vasospasm reaction following the use of any 5-HT<sub>1</sub> agonist, the suspected vasospasm reaction should be ruled out before receiving additional rizatriptan benzoate doses.

Reports of transient and permanent blindness and significant partial vision loss have been reported with the use of 5-HT<sub>1</sub> agonists. Since visual disorders may be part of a migraine attack, a causal relationship between these events and the use of 5-HT<sub>1</sub> agonists have not been clearly established.

## 5.6 Medication Overuse Headache

Overuse of acute migraine drugs (e.g., ergotamine, triptans, opioids, or a combination of drugs for 10 or more days per month) may lead to exacerbation of headache (medication overuse headache). Medication overuse headache may present as migraine-like daily headaches, or as a marked increase in frequency of migraine attacks. Detoxification of patients, including withdrawal of the overused drugs, and treatment of withdrawal symptoms (which often includes a transient worsening of headache) may be necessary.

## 5.7 Serotonin Syndrome

Serotonin syndrome may occur with triptans, including rizatriptan benzoate particularly during co-administration with selective serotonin reuptake inhibitors (SSRIs), serotonin norepinephrine reuptake inhibitors (SNRIs), tricyclic antidepressants (TCAs), and MAO inhibitors [see *Drug Interactions (7.5)*]. Serotonin syndrome symptoms may include mental status changes (e.g., agitation, hallucinations, coma), autonomic instability (e.g., tachycardia, labile blood pressure, hyperthermia), neuromuscular aberrations (e.g., hyperreflexia, incoordination) and/or gastrointestinal symptoms (e.g., nausea, vomiting, diarrhea). The onset of symptoms can occur within minutes to hours of receiving a new or a greater dose of a serotonergic medication. Rizatriptan benzoate treatment should be discontinued if serotonin syndrome is suspected [see *Drug Interactions (7.4)* and *Patient Counseling Information (17)*].

## 5.8 Increase in Blood Pressure

Significant elevation in blood pressure, including hypertensive crisis with acute impairment of organ systems, has been reported on rare occasions in patients with and without a history of hypertension receiving 5-HT<sub>1</sub> agonists, including rizatriptan benzoate. In healthy young adult male and female patients who received maximal doses of rizatriptan benzoate (10 mg every 2 hours for 3 doses), slight increases in blood pressure (approximately 2 to 3 mmHg) were observed. Rizatriptan benzoate is contraindicated in patients with uncontrolled hypertension [see *Contraindications (4)*].

## 6 ADVERSE REACTIONS

The following adverse reactions are discussed in more detail in other sections of the labeling:

Myocardial Ischemia, Myocardial Infarction, and Prinzmetal's Angina [see *Warnings and Precautions (5.1)*].

Arrhythmias [see *Warnings and Precautions (5.2)*].

Chest and or Throat, Neck and/or Jaw Pain/Tightness/Pressure [see *Warnings and Precautions (5.3)*].

Cerebrovascular Events [see *Warnings and Precautions (5.4)*].

Other Vasospasm Reactions [see *Warnings and Precautions (5.5)*].

Medication Overuse Headache [see *Warnings and Precautions (5.6)*].

Serotonin Syndrome [see *Warnings and Precautions (5.7)*].

Increase in Blood Pressure [see *Warnings and Precautions (5.8)*].

### 6.1 Clinical Trials Experience

Because clinical studies are conducted under widely varying conditions, adverse reaction rates observed in the clinical studies of a drug cannot be directly compared to rates in the clinical studies of another drug and may not reflect the rates observed in practice.

Adults

#### Incidence in Controlled Clinical Trials

Adverse reactions to rizatriptan benzoate tablets were assessed in controlled clinical trials that included over 3700 adult patients who received single or multiple doses of rizatriptan benzoate tablets. The most common adverse reactions during treatment with rizatriptan benzoate tablets ( $\geq 5\%$  in either treatment group and greater than placebo) were asthenia/fatigue, somnolence, pain/pressure sensation and dizziness. These adverse reactions appeared to be dose related.

Table 1 lists the adverse reactions (incidence  $\geq 2\%$  and greater than placebo) after a single dose of rizatriptan benzoate tablets in adults.

**Table 1: Incidence ( $\geq 2\%$  and Greater than Placebo) of Adverse Reactions After a Single Dose of Rizatriptan Benzoate Tablets or Placebo in Adults**

Adverse Reactions	% of Patients		
	Rizatriptan Benzoate Tablets 5 mg (N=977)	Rizatriptan Benzoate Tablets 10 mg (N=1167)	Placebo (N=627)
<i>Atypical Sensations</i>	4	5	4
Paresthesia	3	4	<2
<i>Pain and other Pressure Sensations</i>	6	9	3
Chest Pain:			
tightness/pressure and/or heaviness	<2	3	1
Neck/throat/jaw:			
pain/tightness/pressure	<2	2	1
Regional Pain:			
tightness/pressure and/or heaviness	<1	2	0
Pain, location unspecified	3	3	<2
<i>Digestive</i>	9	13	8
Dry Mouth	3	3	1
Nausea	4	6	4
<i>Neurological</i>	14	20	11

Dizziness	4	9	5
Headache	<2	2	<1
Somnolence	4	8	4
<i>Other</i>			
Asthenia/fatigue	4	7	2

---

The frequencies of adverse reactions in clinical trials did not increase when up to three doses were taken within 24 hours. Adverse reaction frequencies were also unchanged by concomitant use of drugs commonly taken for migraine prophylaxis (including propranolol), oral contraceptives, or analgesics. The incidences of adverse reactions were not affected by age or gender. There were insufficient data to assess the impact of race on the incidence of adverse reactions.

*Other Events Observed in Association with the Administration of Rizatriptan Benzoate in Adults*

In the following section, the frequencies of less commonly reported adverse events are presented that were not reported in other sections of the labeling. Because the reports include events observed in open studies, the role of rizatriptan benzoate in their causation cannot be reliably determined. Furthermore, variability associated with adverse event reporting, the terminology used to describe adverse events, limit the value of the quantitative frequency estimates provided. Event frequencies are calculated as the number of patients who used rizatriptan benzoate and reported an event divided by the total number of patients exposed to rizatriptan benzoate (N=3716). All reported events occurred at an incidence  $\geq 1\%$ , or are believed to be reasonably associated with the use of the drug. Events are further classified within body system categories and enumerated in order of decreasing frequency using the following definitions: frequent adverse events are those defined as those occurring in at least ( $>$ )1/100 patients; infrequent adverse experiences are those occurring in 1/100 to 1/1000 patients; and rare adverse experiences are those occurring in fewer than 1/1000 patients.

*General:* Infrequent was facial edema. Rare were syncope and edema/swelling.

*Atypical Sensations:* Frequent were warm sensations.

*Cardiovascular:* Frequent was palpitation. Infrequent were tachycardia, cold extremities, and bradycardia.

*Digestive:* Frequent were diarrhea and vomiting. Infrequent were dyspepsia, tongue edema and abdominal distention.

*Musculoskeletal:* Infrequent were muscle weakness, stiffness, myalgia and muscle cramp/spasm.

*Neurological/Psychiatric:* Frequent were hypoesthesia, euphoria and tremor. Infrequent were vertigo, insomnia, confusion/disorientation, gait abnormality, memory impairment, and agitation.

*Respiratory:* Frequent was dyspnea. Infrequent was pharyngeal edema.

*Special Senses:* Infrequent were blurred vision and tinnitus. Rare was eye swelling.

*Skin and Skin Appendage:* Frequent was flushing. Infrequent were sweating, pruritus, rash, and urticaria. Rare was erythema, hot flashes.

The adverse reaction profile seen with rizatriptan benzoate orally disintegrating tablets was similar to that seen with rizatriptan benzoate tablets.



## Pediatric Patients 6 to 17 Years of Age

*Information relating to adverse reactions to rizatriptan benzoate orally disintegrating tablets in a controlled clinical trial is approved for Merck & Co., Inc.'s Rizatriptan Benzoate Orally Disintegrating Tablets in pediatric patients (6 to 17 years old). However, due to Merck & Co., Inc.'s marketing exclusivity rights, this drug product is not labeled with that information.*

### 6.2 Postmarketing Experience

The following section enumerates potentially important adverse events that have occurred in clinical practice and which have been reported spontaneously to various surveillance systems. The events enumerated include all except those already listed in other sections of the labeling or those too general to be informative. Because the reports cite events reported spontaneously from worldwide postmarketing experience, frequency of events and the role of rizatriptan benzoate in their causation cannot be reliably determined.

*Neurological/Psychiatric:* Seizure.

*General:* Allergic conditions including anaphylaxis/anaphylactoid reaction, angioedema, wheezing, and toxic epidermal necrolysis [*see Contraindications (4)*].

*Special Senses:* Dysgeusia.

## 7 DRUG INTERACTIONS

### 7.1 Propranolol

The dose of rizatriptan benzoate should be adjusted in propranolol-treated patients, as propranolol has been shown to increase the plasma AUC of rizatriptan by 70% [*see Dosage and Administration (2.4) and Clinical Pharmacology (12.3)*].

### 7.2 Ergot-Containing Drugs

Ergot-containing drugs have been reported to cause prolonged vasospastic reactions. Because these effects may be additive, use of ergotamine-containing or ergot-type medications (like dihydroergotamine or methysergide) and rizatriptan benzoate within 24 hours is contraindicated [*see Contraindications (4)*].

### 7.3 Other 5-HT<sub>1</sub> Agonists

Because their vasospastic effects may be additive, co-administration of rizatriptan benzoate and other 5-HT<sub>1</sub> agonists within 24 hours of each other is contraindicated [*see Contraindications (4)*].

### 7.4 SSRIs/SNRIs and Serotonin Syndrome

Cases of serotonin syndrome have been reported during co-administration of triptans and selective serotonin reuptake inhibitors (SSRIs) or serotonin norepinephrine reuptake inhibitors (SNRIs) [*see Warnings and Precautions (5.7)*].

### 7.5 Monoamine Oxidase Inhibitors

Rizatriptan benzoate is contraindicated in patients taking MAO-A inhibitors and non-selective MAO inhibitors. A specific MAO-A inhibitor increased the systemic exposure of rizatriptan and its metabolite [*see Contraindications (4) and Clinical Pharmacology (12.3)*].

## 8 USE IN SPECIFIC POPULATIONS

### 8.1 Pregnancy

## Pregnancy Category C

There are no adequate and well-controlled studies in pregnant women. Rizatriptan benzoate should be used during pregnancy only if the potential benefit justifies the potential risk to the fetus.

In a general reproductive study in rats, birth weights and pre- and post-weaning weight gain were reduced in the offspring of females treated prior to and during mating and throughout gestation and lactation with doses of 10 and 100 mg/kg/day. In a pre- and postnatal developmental toxicity study in rats, an increase in mortality of the offspring at birth and for the first three days after birth, a decrease in pre- and post-weaning weight gain, and decreased performance in a passive avoidance test (which indicates a decrease in learning capacity of the offspring) were observed at doses of 100 and 250 mg/kg/day. The no-effect dose for all of these effects was 5 mg/kg/day, associated with a maternal plasma exposure (AUC) approximately 7.5 times that in humans receiving the MRDD. With doses of 100 and 250 mg/kg/day, the decreases in average weight of both the male and female offspring persisted into adulthood. All effects on the offspring in both studies occurred in the absence of any apparent maternal toxicity.

In embryofetal development studies, no teratogenic effects were observed when pregnant rats and rabbits were administered doses of 100 and 50 mg/kg/day, respectively, during organogenesis. Fetal weights were decreased in conjunction with decreased maternal weight gain at the highest doses tested. The developmental no-effect dose in these studies was 10 mg/kg/day in both rats and rabbits (maternal exposures approximately 15 times human exposure at the MRDD). Toxicokinetic studies demonstrated placental transfer of drug in both species.

### 8.3 Nursing Mothers

It is not known whether this drug is excreted in human milk. Because many drugs are excreted in human milk, caution should be exercised when rizatriptan benzoate is administered to a nursing woman. Rizatriptan is extensively excreted in rat milk, with levels in milk at least 5-fold higher than levels in maternal plasma.

### 8.4 Pediatric Use

Safety and effectiveness in pediatric patients under 6 years of age have not been established.

*Information related to the efficacy and safety of rizatriptan benzoate in the acute treatment of migraine in patients aged 6 to 17 years is approved for Merck & Co., Inc.'s Rizatriptan Benzoate Tablets. However, due to Merck & Co., Inc.'s marketing exclusivity rights, this drug product is not labeled with that information. [see Clinical Studies (14.2)].*

### 8.5 Geriatric Use

Clinical studies of rizatriptan benzoate did not include sufficient numbers of subjects aged 65 and over to determine whether they respond differently from younger subjects. Other reported clinical experience has not identified differences in responses between the elderly and younger patients.

Although the pharmacokinetics of rizatriptan were similar in elderly (aged  $\geq 65$  years) and in younger adults (n=17), in general, dose selection for an elderly patient should be cautious, starting at the low end of the dosing range. This reflects the greater frequency of decreased hepatic, renal, or cardiac function, and of concomitant disease or other drug therapy.

Geriatric patients who have other cardiovascular risk factors (e.g., diabetes, hypertension, smoking, obesity, strong family history of coronary artery disease) should have a cardiovascular evaluation prior to receiving rizatriptan benzoate [see Warnings and Precautions (5.1)].

## 10 OVERDOSAGE

No overdoses of rizatriptan benzoate were reported during clinical trials in adults.

Some adult patients who received 40 mg of rizatriptan benzoate either a single dose or as two doses with a 2-hour interdose interval had dizziness and somnolence.

In a clinical pharmacology study in which 12 adult subjects received rizatriptan benzoate, at total cumulative doses of 80 mg (given within four hours), two of the subjects experienced syncope, dizziness, bradycardia including third degree AV block, vomiting, and/or incontinence.

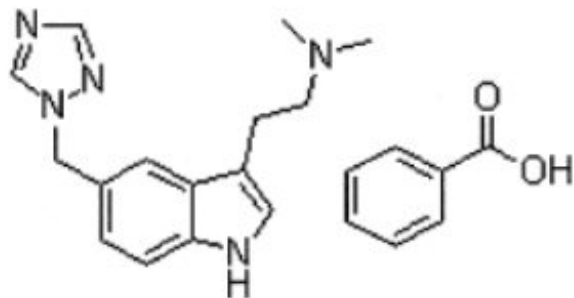
In addition, based on the pharmacology of rizatriptan benzoate, hypertension or myocardial ischemia could occur after overdosage. Gastrointestinal decontamination, (i.e., gastric lavage followed by activated charcoal) should be considered in patients suspected of an overdose with rizatriptan benzoate. Clinical and electrocardiographic monitoring should be continued for at least 12 hours, even if clinical symptoms are not observed.

The effects of hemo- or peritoneal dialysis on serum concentrations of rizatriptan are unknown.

## 11 DESCRIPTION

Rizatriptan benzoate tablets contain rizatriptan benzoate USP, a selective 5-hydroxytryptamine<sub>1B/1D</sub> (5-HT<sub>1B/1D</sub>) receptor agonist.

Rizatriptan benzoate USP is described chemically as: *N,N*-dimethyl-5-(1*H*-1,2,4-triazol-1-ylmethyl)-1*H*-indole-3-ethanamine monobenzoate and its structural formula is:



Its molecular formula is C<sub>15</sub>H<sub>19</sub>N<sub>5</sub>•C<sub>7</sub>H<sub>6</sub>O<sub>2</sub>, representing a molecular weight of the free base of 269.4. Rizatriptan benzoate USP is a white to off-white, crystalline solid that is soluble in methanol; sparingly soluble in water, slightly soluble in acetone and ethanol.

Rizatriptan benzoate tablets are available for oral administration in strengths of 5 mg and 10 mg (corresponding to 7.265 mg or 14.53 mg of the benzoate salt, respectively). Each compressed tablet contains the following inactive ingredients: colloidal silicon dioxide, ferric oxide red, lactose monohydrate, magnesium stearate, microcrystalline cellulose, pregelatinized corn starch.

## 12 CLINICAL PHARMACOLOGY

### 12.1 Mechanism of Action

Rizatriptan binds with high affinity to human cloned 5-HT<sub>1B/1D</sub> receptors. Rizatriptan benzoate presumably exerts its therapeutic effects in the treatment of migraine headache by binding to 5-HT<sub>1B/1D</sub> receptors located on intracranial blood vessels and sensory nerves of the trigeminal system.

### 12.3 Pharmacokinetics

#### Absorption

Rizatriptan is completely absorbed following oral administration. The mean oral absolute bioavailability

of the rizatriptan benzoate tablet is about 45%, and mean peak plasma concentrations ( $C_{max}$ ) are reached in approximately 1 to 1.5 hours ( $T_{max}$ ). The presence of a migraine headache did not appear to affect the absorption or pharmacokinetics of rizatriptan. Food has no significant effect on the bioavailability of rizatriptan but delays the time to reach peak concentration by an hour. In clinical trials, rizatriptan benzoate was administered without regard to food.

The bioavailability and  $C_{max}$  of rizatriptan were similar following administration of rizatriptan benzoate tablets and rizatriptan benzoate orally disintegrating tablets, but the rate of absorption is somewhat slower with rizatriptan benzoate orally disintegrating tablets, with  $T_{max}$  delayed by up to 0.7 hour. AUC of rizatriptan is approximately 30% higher in females than in males. No accumulation occurred on multiple dosing.

### Distribution

The mean volume of distribution is approximately 140 liters in male subjects and 110 liters in female subjects. Rizatriptan is minimally bound (14%) to plasma proteins.

### Metabolism

The primary route of rizatriptan metabolism is via oxidative deamination by monoamine oxidase-A (MAO-A) to the indole acetic acid metabolite, which is not active at the 5-HT<sub>1B/1D</sub> receptor. N-monodesmethyl-rizatriptan, a metabolite with activity similar to that of parent compound at the 5-HT<sub>1B/1D</sub> receptor, is formed to a minor degree. Plasma concentrations of N-monodesmethyl-rizatriptan are approximately 14% of those of parent compound, and it is eliminated at a similar rate. Other minor metabolites, the N-oxide, the 6-hydroxy compound, and the sulfate conjugate of the 6-hydroxy metabolite are not active at the 5-HT<sub>1B/1D</sub> receptor.

### Elimination

The total radioactivity of the administered dose recovered over 120 hours in urine and feces was 82% and 12%, respectively, following a single 10 mg oral administration of <sup>14</sup>C-rizatriptan. Following oral administration of <sup>14</sup>C-rizatriptan, rizatriptan accounted for about 17% of circulating plasma radioactivity.

Approximately 14% of an oral dose is excreted in urine as unchanged rizatriptan while 51% is excreted as indole acetic acid metabolite, indicating substantial first pass metabolism.

The plasma half-life of rizatriptan in males and females averages 2 to 3 hours.

### Cytochrome P450 Isoforms

Rizatriptan is not an inhibitor of the activities of human liver cytochrome P450 isoforms 3A4/5, 1A2, 2C9, 2C19, or 2E1; rizatriptan is a competitive inhibitor ( $K_i=1400$  nM) of cytochrome P450 2D6, but only at high, clinically irrelevant concentrations.

### Special Populations

*Geriatric:* Rizatriptan pharmacokinetics in healthy elderly non-migraineur volunteers (age 65 to 77 years) were similar to those in younger non-migraineur volunteers (age 18 to 45 years).

*Pediatric:* : Information related to the pharmacokinetics of rizatriptan in pediatric migraineurs 6 to 17 years of age is approved for Merck & Co., Inc.'s Rizatriptan Benzoate Tablets. However, due to Merck & Co., Inc.'s marketing exclusivity rights, this drug product is not labeled with that information.

*Gender:* The mean  $AUC_{0-\infty}$  and  $C_{max}$  of rizatriptan (10 mg orally) were about 30% and 11% higher in females as compared to males, respectively, while  $T_{max}$  occurred at approximately the same time.

*Hepatic impairment:* Following oral administration in patients with hepatic impairment caused by mild to moderate alcoholic cirrhosis of the liver, plasma concentrations of rizatriptan were similar in patients with mild hepatic insufficiency compared to a control group of subjects with normal hepatic function;

plasma concentrations of rizatriptan were approximately 30% greater in patients with moderate hepatic insufficiency.

**Renal impairment:** In patients with renal impairment (creatinine clearance 10 to 60 mL/min/1.73 m<sup>2</sup>), the AUC<sub>0-∞</sub> of rizatriptan was not significantly different from that in subjects with normal renal function. In hemodialysis patients, (creatinine clearance <2 mL/min/1.73 m<sup>2</sup>), however, the AUC for rizatriptan was approximately 44% greater than that in patients with normal renal function.

**Race:** Pharmacokinetic data revealed no significant differences between African American and Caucasian subjects.

## Drug Interactions

[See also *Drug Interactions (7)*.]

**Monoamine oxidase inhibitors:** Rizatriptan is principally metabolized via monoamine oxidase, 'A' subtype (MAO-A). Plasma concentrations of rizatriptan may be increased by drugs that are selective MAO-A inhibitors (e.g., moclobemide) or nonselective MAO inhibitors [type A and B] (e.g., isocarboxazid, phenelzine, tranylcypromine, and pargyline). In a drug interaction study, when rizatriptan benzoate 10 mg was administered to subjects (n=12) receiving concomitant therapy with the selective, reversible MAO-A inhibitor, moclobemide 150 mg t.i.d., there were mean increases in rizatriptan AUC and C<sub>max</sub> of 119% and 41% respectively; and the AUC of the active N-monodesmethyl metabolite of rizatriptan was increased more than 400%. The interaction would be expected to be greater with irreversible MAO inhibitors. No pharmacokinetic interaction is anticipated in patients receiving selective MAO-B inhibitors [see *Contraindications (4)* and *Drug Interactions (7.5)*].

**Propranolol:** In a study of concurrent administration of propranolol 240 mg/day and a single dose of rizatriptan 10 mg in healthy adult subjects (n=11), mean plasma AUC for rizatriptan was increased by 70% during propranolol administration, and a four-fold increase was observed in one subject. The AUC of the active N-monodesmethyl metabolite of rizatriptan was not affected by propranolol [see *Dosage and Administration (2.4)* and *Drug Interactions (7.1)*].

**Nadolol/Metoprolol:** In a drug interactions study, effects of multiple doses of nadolol 80 mg or metoprolol 100 mg every 12 hours on the pharmacokinetics of a single dose of 10 mg rizatriptan were evaluated in healthy subjects (n=12). No pharmacokinetic interactions were observed.

**Paroxetine:** In a study of the interaction between the selective serotonin reuptake inhibitor (SSRI) paroxetine 20 mg/day for two weeks and a single dose of rizatriptan benzoate 10 mg in healthy subjects (n=12), neither the plasma concentrations of rizatriptan nor its safety profile were affected by paroxetine [see *Warnings and Precautions (5.7)*, *Drug Interactions (7.4)*, and *Patient Counseling Information (17)*].

**Oral contraceptives:** In a study of concurrent administration of an oral contraceptive during 6 days of administration of rizatriptan benzoate (10 to 30 mg/day) in healthy female volunteers (n=18), rizatriptan did not affect plasma concentrations of ethinyl estradiol or norethindrone.

## 13 NONCLINICAL TOXICOLOGY

### 13.1 Carcinogenesis, Mutagenesis, Impairment of Fertility

**Carcinogenesis:** Oral carcinogenicity studies were conducted in mice (100 weeks) and rats (106 weeks) at doses of up to 125 mg/kg/day. Plasma exposures (AUC) at the highest dose tested were approximately 150 (mice) and 240 times (rats) that in humans at the maximum recommended daily dose (MRDD) of 30 mg/day. There was no evidence of an increase in tumor incidence related to rizatriptan in either species.

**Mutagenesis:** Rizatriptan was neither mutagenic nor clastogenic in a battery of *in vitro* and *in vivo* genetic toxicity studies, including: the microbial mutagenesis (Ames) assay, *in vitro* mammalian cell mutagenesis and chromosomal aberration assays, and the *in vivo* chromosomal aberration assay in mouse.

***Impairment of Fertility:*** In a fertility study in rats, altered estrus cyclicity and delays in time to mating were observed in females treated orally with 100 mg/kg/day rizatriptan. The no-effect dose was 10 mg/kg/day (approximately 15 times the human exposure at the MRDD). There were no other fertility-related effects in the female rats. There was no impairment of fertility or reproductive performance in male rats treated with up to 250 mg/kg/day (approximately 550 times the human exposure at the MRDD).

## 14 CLINICAL STUDIES

### 14.1 Adults

The efficacy of rizatriptan benzoate tablets was established in four multicenter, randomized, placebo-controlled trials. Patients enrolled in these studies were primarily female (84%) and Caucasian (88%), with a mean age of 40 years (range of 18 to 71). Patients were instructed to treat a moderate to severe headache. Headache response, defined as a reduction of moderate or severe headache pain to no or mild headache pain, was assessed for up to 2 hours (Study 1) or up to 4 hours after dosing (Studies 2, 3 and 4). Associated symptoms of nausea, photophobia, and phonophobia and maintenance of response up to 24 hours post-dose were evaluated. A second dose of rizatriptan benzoate tablets was allowed 2 to 24 hours after dosing for treatment of recurrent headache in Studies 1 and 2. Additional analgesics and/or antiemetics were allowed 2 hours after initial treatment for rescue in all four studies.

In all studies, the percentage of patients achieving headache response 2 hours after treatment was significantly greater in patients who received either rizatriptan benzoate tablets 5 or 10 mg compared to those who received placebo. In a separate study, doses of 2.5 mg were not different from placebo. Doses greater than 10 mg were associated with an increased incidence of adverse effects. The results from the four controlled studies are summarized in Table 2.

**Table 2: Response Rates 2 Hours Following Treatment of Initial Headache in Studies 1, 2, 3, and 4**

Study	Placebo	Rizatriptan Benzoate Tablets	
		5 mg	10 mg
1	35% (n=304)	62%* (n=458)	71%*,† (n=456)
2‡	37% (n=82)	—	77%* (n=320)
3	23% (n=80)	63%* (n=352)	—
4	40% (n=159)	60%* (n=164)	67%* (n=385)

\* p-value <0.05 in comparison with placebo

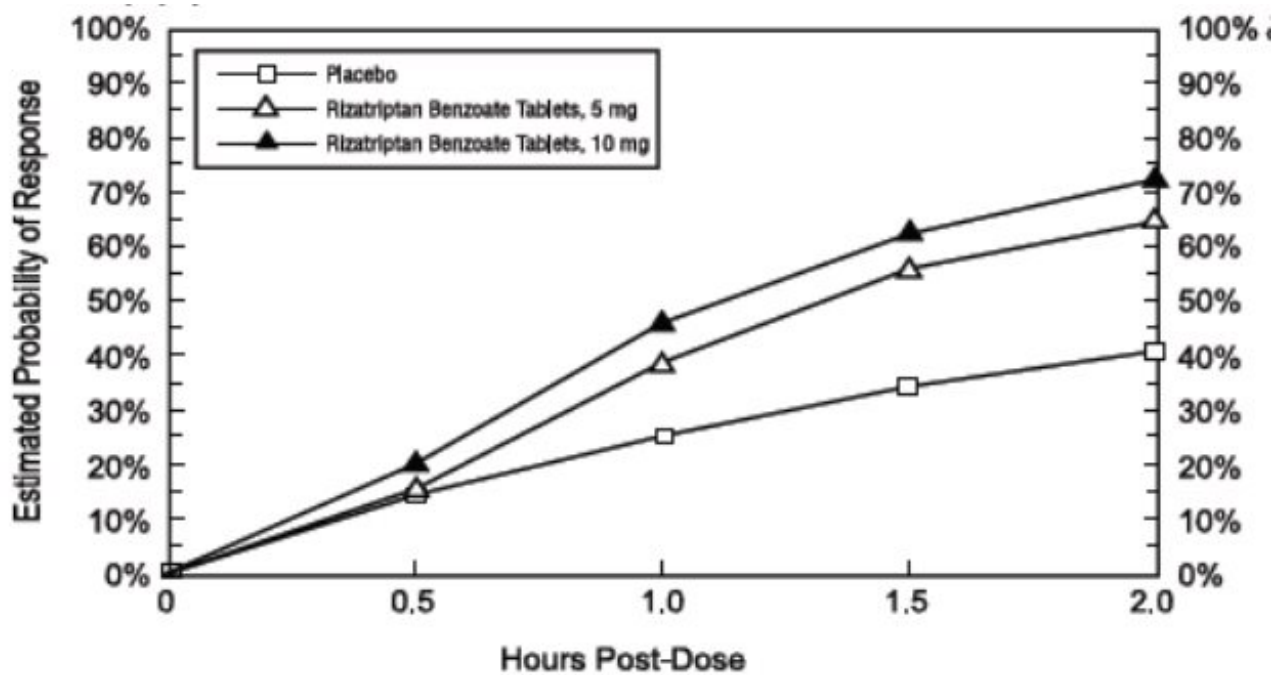
† p-value <0.05 in comparison with 5 mg

‡ Results for initial headache only

Comparisons of drug performance based upon results obtained in different clinical trials may not be reliable. Because studies are conducted at different times, with different samples of patients, by different investigators, employing different criteria and/or different interpretations of the same criteria, under different conditions (dose, dosing regimen, etc.), quantitative estimates of treatment response and the timing of response may be expected to vary considerably from study to study.

The estimated probability of achieving an initial headache response within 2 hours following treatment in pooled Studies 1, 2, 3, and 4 is depicted in Figure 1.

**Figure 1: Estimated Probability of Achieving an Initial Headache Response by 2 Hours in Pooled Studies 1, 2, 3, and 4<sup>††</sup>**

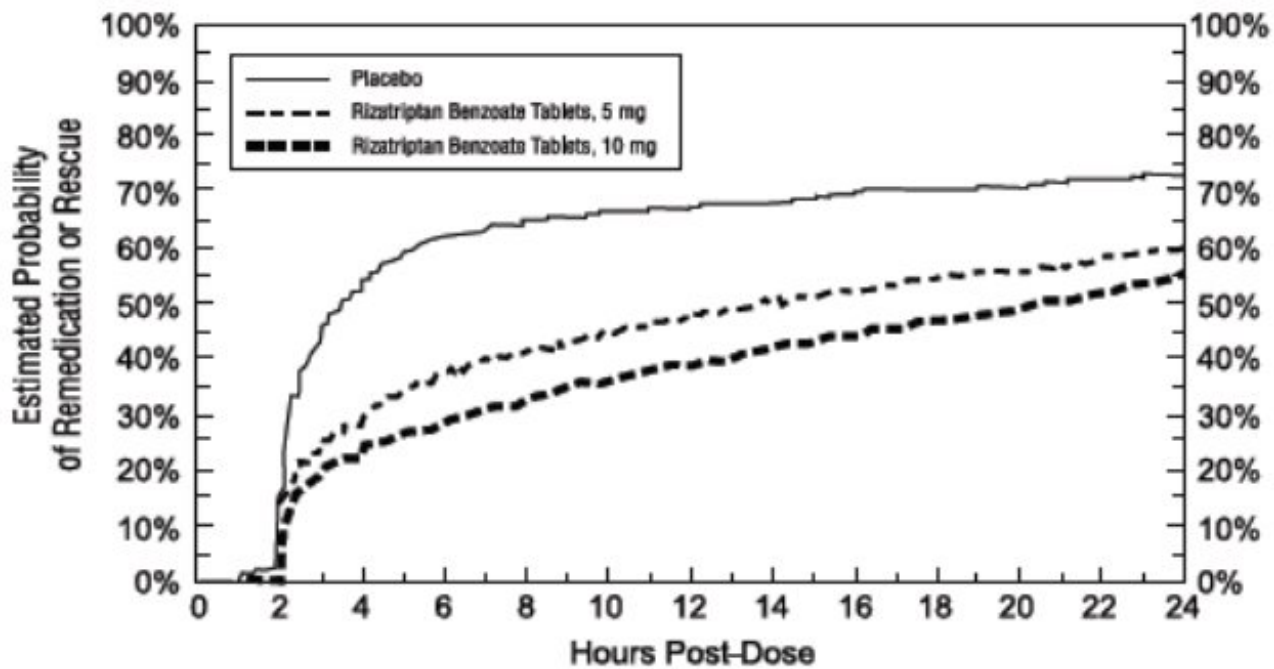


†† Figure 1 shows the Kaplan-Meier plot of the probability over time of obtaining headache response (no or mild pain) following treatment with rizatriptan benzoate tablets or placebo. The averages displayed are based on pooled data from 4 placebo-controlled, outpatient trials providing evidence of efficacy (Studies 1, 2, 3, and 4). Patients taking additional treatment or not achieving headache response prior to 2 hours were censored at 2 hours.

For patients with migraine-associated photophobia, phonophobia, and nausea at baseline, there was a decreased incidence of these symptoms following administration of rizatriptan benzoate tablets compared to placebo.

Two to 24 hours following the initial dose of study treatment, patients were allowed to use additional treatment for pain response in the form of a second dose of study treatment or other medication. The estimated probability of patients taking a second dose or other medication for migraine over the 24 hours following the initial dose of study treatment is summarized in Figure 2.

**Figure 2: Estimated Probability of Patients Taking a Second Dose of Rizatriptan Benzoate Tablets or Other Medication for Migraines Over the 24 Hours Following the Initial Dose of Study Treatment in Pooled Studies 1, 2, 3, and 4<sup>†††</sup>**



††† This Kaplan-Meier plot is based on data obtained in 4 placebo-controlled outpatient clinical trials (Studies 1, 2, 3, and 4). Patients not using additional treatments were censored at 24 hours. The plot includes both patients who had headache response at 2 hours and those who had no response to the initial dose. Remedication was not allowed within 2 hours post-dose.

Efficacy was unaffected by the presence of aura; by the gender, or age of the patient; or by concomitant use of common migraine prophylactic drugs (e.g., beta-blockers, calcium channel blockers, tricyclic antidepressants) or oral contraceptives. In two additional similar studies, efficacy was unaffected by relationship to menses. There were insufficient data to assess the impact of race on efficacy.

#### 14.2 Pediatric Patients 6 to 17 Years of Age

*Information contained in a clinical study relating to the efficacy of rizatriptan benzoate orally disintegrating tablets in pediatric patients (6 to 17 years old) is approved for Merck & Co., Inc.'s Rizatriptan Benzoate Tablets. However, due to Merck & Co., Inc.'s marketing exclusivity rights, this drug product is not labeled with that information.*

#### 16 HOW SUPPLIED/STORAGE AND HANDLING

Rizatriptan benzoate tablets 5 mg (rizatriptan benzoate equivalent to 5 mg of rizatriptan) are light pink to reddish brown, mottled, round, uncoated tablets engraved with '465' on one side and plain on other side. They are packaged as 1 tablet per blister card. Each blister card is packed within a pouch. 12 pouches are included within a carton (NDC 68462-465-72) and 18 pouches are included within a carton (NDC 68462-465-99).

Rizatriptan benzoate tablets 10 mg (rizatriptan benzoate equivalent to 10 mg of rizatriptan) are light pink to reddish brown, mottled, round, uncoated tablets engraved with '466' on one side and plain on other side. They are packaged as 1 tablet per blister card. Each blister card is packed within a pouch. 12 pouches are included within a carton (NDC 68462-466-72) and 18 pouches are included within a carton (NDC 68462-466-99).

#### Storage

**Store at 20° to 25°C (68° to 77°F); excursions permitted to 15° to 30°C (59° to 86°F) [see USP Controlled Room Temperature].**



## 17 PATIENT COUNSELING INFORMATION

See FDA-Approved Patient Labeling (Patient Information).

### **Risk of Myocardial Ischemia and/or Infarction, Prinzmetal's Angina, Other Vasospasm-related Events, and Cerebrovascular Events**

Inform patients that rizatriptan benzoate may cause serious cardiovascular side effects such as myocardial infarction or stroke. Although serious cardiovascular events can occur without warning symptoms, patients should be alert for the signs and symptoms of chest pain, shortness of breath, weakness, slurring of speech, and should ask for medical advice when observing any indicative sign or symptoms. Patients should be apprised of the importance of this follow-up [see Warnings and Precautions (5.1, 5.2, 5.4, 5.5)].

### **Serotonin Syndrome**

Patients should be cautioned about the risk of serotonin syndrome with the use of rizatriptan benzoate or other triptans, particularly during combined use with selective serotonin reuptake inhibitors (SSRIs) or serotonin norepinephrine reuptake inhibitors (SNRIs) [see Warnings and Precautions (5.7), Drug Interactions (7.4), and Clinical Pharmacology (12.3)].

### **Pregnancy**

Inform patients that rizatriptan benzoate should not be used during pregnancy unless the potential benefit justifies the potential risk to the fetus [see Use in Specific Populations (8.1)].

### **Nursing Mothers**

Advise patients to notify their healthcare provider if they are breastfeeding or plan to breastfeed [see Use in Specific Populations (8.3)].

### **Ability To Perform Complex Tasks**

Since migraines or treatment with rizatriptan benzoate may cause somnolence and dizziness, instruct patients to evaluate their ability to perform complex tasks during migraine attacks and after administration of rizatriptan benzoate.

### **Medication Overuse Headache**

Inform patients that use of acute migraine drugs for 10 or more days per month may lead to an exacerbation of headache, and encourage patients to record headache frequency and drug use (e.g., by keeping a headache diary) [see Warnings and Precautions (5.6)].

Manufactured by:

**Glenmark Pharmaceuticals Ltd.**

Colvale-Bardez, Goa 403 513, India

Manufactured for:



**Glenmark Pharmaceuticals Inc., USA**

Mahwah, NJ 07430

Questions? 1 (888)721-7115

October 2014

## **Patient Information**

### **Rizatriptan Benzoate Tablets**

Read this Patient Information before you start taking rizatriptan benzoate tablets and each time you get a refill. There may be new information. This information does not take the place of talking to your doctor about your medical condition or your treatment.

#### **What are rizatriptan benzoate tablets?**

Rizatriptan benzoate is a prescription medicine that belongs to a class of medicines called Triptans. Rizatriptan benzoate is available as a traditional tablet and an orally disintegrating tablet.

Rizatriptan benzoate tablets are used to treat migraine attacks with or without aura in adults

Rizatriptan benzoate tablets are not to be used to prevent migraine attacks.

Rizatriptan benzoate tablets are not for the treatment of hemiplegic or basilar migraines.

It is not known if rizatriptan benzoate tablets are safe and effective for the treatment of cluster headaches.

It is not known if rizatriptan benzoate tablets are safe and effective in children under 6 years of age.

#### **Who should not take rizatriptan benzoate tablets?**

##### **Do not take rizatriptan benzoate tablets if you:**

- have or have had heart problems
- have or have had a stroke or a transient ischemic attack (TIA)
- have or have had blood vessel problems including ischemic bowel disease
- have uncontrolled high blood pressure
- have taken other Triptan medicines in the last 24 hours
- have taken ergot-containing medicines in the last 24 hours
- have hemiplegic or basilar migraines
- take monoamine oxidase (MAO) inhibitor or have taken a MAO inhibitor within the last 2 weeks
- are allergic to rizatriptan benzoate or any of the ingredients in rizatriptan benzoate tablets. See the end of this leaflet for a complete list of ingredients in rizatriptan benzoate tablets.

Talk to your doctor before taking this medicine if you have any of the conditions listed above or if you are not sure if you take any of these medicines.

#### **What should I tell my doctor before taking rizatriptan benzoate tablets?**

##### **Before you take rizatriptan benzoate tablets, tell your doctor if you:**

- have or have had heart problems, high blood pressure, chest pain, or shortness of breath
- have any risk factors for heart problems or blood vessel problems such as:
  - high blood pressure
  - high cholesterol
  - smoking
  - obesity

- diabetes
  - family history of heart problems
  - you are post menopausal
  - you are a male over 40
- have kidney or liver problems
  - have any other medical condition
  - are pregnant or plan to become pregnant. It is not known if rizatriptan benzoate tablets will harm your unborn baby. If you become pregnant while taking rizatriptan benzoate tablets, talk to your healthcare provider.
  - are breastfeeding or plan to breastfeed. It is not known if rizatriptan benzoate passes into your breast milk. Talk to your doctor about the best way to feed your baby if you take rizatriptan benzoate tablets.

**Tell your doctor about all the medicines you take**, including prescription and nonprescription medicines, vitamins, and herbal supplements.

Rizatriptan benzoate tablets and other medicines may affect each other causing side effects. Rizatriptan benzoate tablets may affect the way other medicines work, and other medicines may affect how rizatriptan benzoate tablets work.

**Especially tell your doctor if you take:**

- propranolol containing medicines such as Inderal<sup>®</sup>, Inderal<sup>®</sup> LA, or Innopran<sup>®</sup> XL
- medicines used to treat mood disorders, including selective serotonin reuptake inhibitors (SSRIs) or serotonin norepinephrine reuptake inhibitors (SNRIs).

Ask your doctor or pharmacist for a list of these medicines, if you are not sure.

Know the medicines you take. Keep a list of them to show your doctor and pharmacist when you get a new medicine.

**How should I take rizatriptan benzoate tablets?**

- Take rizatriptan benzoate tablets exactly as your doctor tells you to take it.
- Your doctor will tell you how much rizatriptan benzoate tablets to take and when to take it.
- If your headache comes back after your first rizatriptan benzoate tablets dose:
  - For adults: a second dose may be taken 2 hours after the first dose. Do not take more than 30 mg of rizatriptan benzoate tablets in a 24-hour period (for example, do not take more than 3 10 mg tablets in a 24-hour period).
- If you take too much rizatriptan benzoate tablets, call your doctor or go to the nearest hospital emergency room right away.

**What should I avoid while taking rizatriptan benzoate tablets?**

Rizatriptan benzoate tablets may cause dizziness, weakness, or fainting. If you have these symptoms, do not drive a car, use machinery, or do anything that needs you to be alert.

**What are the possible side effects of rizatriptan benzoate tablets?**

**Rizatriptan benzoate tablets may cause serious side effects.** Call your doctor or go to the nearest hospital emergency room right away if you think you are having any of the serious side effects of rizatriptan benzoate tablets including:

- **heart attack.** Symptoms of a heart attack may include:
  - chest discomfort in the center of your chest that lasts for more than a few minutes or that goes away and comes back
  - chest discomfort that feels like uncomfortable pressure, squeezing, fullness or pain
  - pain or discomfort in your arms, back, neck, jaw or stomach
  - shortness of breath with or without chest discomfort
  - breaking out in a cold sweat
  - nausea or vomiting
  - feeling lightheaded
  
- **stroke.** Symptoms of a stroke may include the following sudden symptoms:
  - numbness or weakness in your face, arm or leg, especially on one side of your body
  - confusion, problems speaking or understanding
  - problems seeing in 1 or both of your eyes
  - problems walking, dizziness, loss of balance or coordination
  - severe headache with no known cause
  
- **blood vessel problems.** Symptoms of blood vessel problems may include:
  - stomach pain
  - bloody diarrhea
  - vision problems
  - coldness and numbness of hands and feet
  
- **serotonin syndrome.** A condition called serotonin syndrome can happen when Triptan medicines such as rizatriptan benzoate tablets are taken with certain other medicines. Symptoms of serotonin syndrome may include:
  - agitation
  - hallucinations
  - coma
  - fast heartbeat
  - fast changes in your blood pressure
  - increased body temperature
  - muscle spasm
  - loss of coordination
  - nausea, vomiting or diarrhea
  
- increased blood pressure

The most common side effects of rizatriptan benzoate tablets in adults include:

- feeling sleepy or tired
- pain or pressure in your chest or throat
- dizziness

Tell your doctor if you have any side effect that bothers you or that does not go away.

If you take rizatriptan benzoate tablets too often, this may result in you getting chronic headaches. In such cases, you should contact your doctor, as you may have to stop taking rizatriptan benzoate tablets.

These are not all the possible side effects of rizatriptan benzoate tablets. For more information, ask your doctor or pharmacist.

Call your doctor for medical advice about side effects. You may report side effects to FDA at 1-800-FDA-1088.

### **How should I store rizatriptan benzoate tablets?**

- Store rizatriptan benzoate tablets between 68°F to 77°F (20°C to 25°C).
- Safely throw away medicine that is out of date or no longer needed.

### **Keep rizatriptan benzoate tablets and all medicines out of the reach of children.**

### **General Information about the safe and effective use of rizatriptan benzoate tablets.**

Medicines are sometimes prescribed for purposes other than those listed in a Patient Information leaflet. Do not use rizatriptan benzoate tablets for a condition for which they were not prescribed. Do not give rizatriptan benzoate tablets to other people, even if they have the same symptoms that you have. It may harm them.

This Patient Information leaflet summarizes the most important information about rizatriptan benzoate tablets. If you would like more information, talk to your doctor. You can ask your pharmacist or doctor for information about rizatriptan benzoate tablets that is written for health professionals.

For more information, call 1(888)721-7115.

### **What are the ingredients in rizatriptan benzoate tablets?**

**Active ingredient in rizatriptan benzoate tablets:** rizatriptan benzoate USP.

**Inactive ingredients in rizatriptan benzoate tablets:** colloidal silicon dioxide, ferric oxide red, lactose monohydrate, magnesium stearate, microcrystalline cellulose, pregelatinized corn starch.

*Information related to the usage of rizatriptan benzoate tablets for pediatric patients aged 6 to 17 years is approved for Merck & Co., Inc.'s Rizatriptan Benzoate Tablets. However, due to Merck & Co., Inc.'s marketing exclusivity rights, this drug product is not labeled with that information.*

The brands listed are the trademarks of their respective owners.

This Patient Information has been approved by the U.S. Food and Drug Administration.

Manufactured by:

**Glenmark Pharmaceuticals Ltd.**

Colvale-Bardez, Goa 403 513, India

Manufactured for:




**Glenmark Pharmaceuticals Inc., USA**

Mahwah, NJ 07430


Questions? 1 (888)721-7115

October 2014

**Package/Label Display Panel**

 <p><b>RIZATRIPTAN BENZOATE TABLETS</b></p> <p><b>5 mg*</b></p> <p>Pharmacist: Please dispense with patient information sheet provided separately</p>		<p>*Each tablet contains 7.265 mg of rizatriptan benzoate USP equivalent to 5 mg rizatriptan.</p> <p><b>USUAL ADULT DOSAGE:</b> See accompanying circular.</p> <p>This unit-dose package is not child-resistant. Keep out of reach of children.</p> <p><b>Store at 20° to 25°C (68° to 77°F); excursions permitted to 15° to 30°C (59° to 86°F) [see USP Controlled Room Temperature].</b></p> <p>Manufactured by: <b>Glenmark Pharmaceuticals Ltd.</b> Colvale-Bardez, Goa 403513, India GO/DRUGS/648 Manufactured for: <b>Glenmark Pharmaceuticals Inc., USA</b> Mahwah, NJ 07430</p>
<b>Rx Only</b>	<b>18 Unit-Dose Tablets</b>	

**Package/Label Display Panel**

 <p><b>RIZATRIPTAN BENZOATE TABLETS</b></p> <p><b>10 mg*</b></p> <p>Pharmacist: Please dispense with patient information sheet provided separately</p>		<p>*Each tablet contains 14.53 mg of rizatriptan benzoate USP equivalent to 10 mg rizatriptan.</p> <p><b>USUAL ADULT DOSAGE:</b> See accompanying circular.</p> <p>This unit-dose package is not child-resistant. Keep out of reach of children.</p> <p><b>Store at 20° to 25°C (68° to 77°F); excursions permitted to 15° to 30°C (59° to 86°F) [see USP Controlled Room Temperature].</b></p> <p>Manufactured by: <b>Glenmark Pharmaceuticals Ltd.</b> Colvale-Bardez, Goa 403513, India GO/DRUGS/648 Manufactured for: <b>Glenmark Pharmaceuticals Inc., USA</b> Mahwah, NJ 07430</p>
<b>Rx Only</b>	<b>18 Unit-Dose Tablets</b>	

**RIZATRIPTAN BENZOATE**

rizatriptan benzoate tablet

**Product Information**

<b>Product Type</b>	HUMAN PRESCRIPTION DRUG	<b>Item Code (Source)</b>	NDC:68462-465
<b>Route of Administration</b>	ORAL		

**Active Ingredient/Active Moiety**

Ingredient Name	Basis of Strength	Strength
-----------------	-------------------	----------

RIZATRIPTAN BENZOATE (UNII: WR978S7QHH) (RIZATRIPTAN - UNII:51086HBW8G)	RIZATRIPTAN	5 mg
---	-------------	------

### Inactive Ingredients

Ingredient Name	Strength
LACTOSE MONOHYDRATE (UNII: EWQ57Q8I5X)	
CELLULOSE, MICROCRYSTALLINE (UNII: OP1R32D61U)	
STARCH, CORN (UNII: O8232NY3SJ)	
FERRIC OXIDE RED (UNII: 1K09F3G675)	
MAGNESIUM STEARATE (UNII: 70097M6I30)	
SILICON DIOXIDE (UNII: ETJ7Z6XBU4)	

### Product Characteristics

Color	PINK (light pink to reddish brown mottled)	Score	no score
Shape	ROUND	Size	7mm
Flavor		Imprint Code	465
Contains			

### Packaging

#	Item Code	Package Description	Marketing Start Date	Marketing End Date
1	NDC:68462-465-72	12 in 1 CARTON		
1		1 in 1 POUCH		
1		1 in 1 BLISTER PACK; Type 0: Not a Combination Product		
2	NDC:68462-465-99	18 in 1 CARTON		
2		1 in 1 POUCH		
2		1 in 1 BLISTER PACK; Type 0: Not a Combination Product		

### Marketing Information

Marketing Category	Application Number or Monograph Citation	Marketing Start Date	Marketing End Date
ANDA	ANDA201967	12/31/2012	

## RIZATRIPTAN BENZOATE

rizatriptan benzoate tablet

### Product Information

Product Type	HUMAN PRESCRIPTION DRUG	Item Code (Source)	NDC:68462-466
Route of Administration	ORAL		

### Active Ingredient/Active Moiety

Ingredient Name	Basis of Strength	Strength
RIZATRIPTAN BENZOATE (UNII: WR978S7QHH) (RIZATRIPTAN - UNII:51086HBW8G)	RIZATRIPTAN	10 mg

## Inactive Ingredients

Ingredient Name	Strength
LACTOSE MONOHYDRATE (UNII: EWQ57Q8I5X)	
CELLULOSE, MICROCRYSTALLINE (UNII: OP1R32D61U)	
STARCH, CORN (UNII: O8232NY3SJ)	
FERRIC OXIDE RED (UNII: 1K09F3G675)	
MAGNESIUM STEARATE (UNII: 70097M6I30)	
SILICON DIOXIDE (UNII: ETJ7Z6XBU4)	

## Product Characteristics

Color	PINK (light pink to reddish brown mottled)	Score	no score
Shape	ROUND	Size	8mm
Flavor		Imprint Code	466
Contains			

## Packaging

#	Item Code	Package Description	Marketing Start Date	Marketing End Date
1	NDC:68462-466-72	12 in 1 CARTON		
1		1 in 1 POUCH		
1		1 in 1 BLISTER PACK; Type 0: Not a Combination Product		
2	NDC:68462-466-99	18 in 1 CARTON		
2		1 in 1 POUCH		
2		1 in 1 BLISTER PACK; Type 0: Not a Combination Product		

## Marketing Information

Marketing Category	Application Number or Monograph Citation	Marketing Start Date	Marketing End Date
ANDA	ANDA201967	12/31/2012	

**Labeler** - Glenmark Pharmaceuticals Inc., USA (130597813)

## Establishment

Name	Address	ID/FEI	Business Operations
Glenmark Pharmaceuticals Limited		677318665	ANALYSIS(68462-465, 68462-466) , MANUFACTURE(68462-465, 68462-466)

Revised: 11/2015

Glenmark Pharmaceuticals Inc., USA