

ALFENTANIL HYDROCHLORIDE- alfentanil hydrochloride injection, solution
Hospira, Inc.

HIGHLIGHTS OF PRESCRIBING INFORMATION

These highlights do not include all the information needed to use ALFENTANIL INJECTION safely and effectively. See full prescribing information for ALFENTANIL INJECTION.

ALFENTANIL INJECTION, USP (alfentanil hydrochloride) for Intravenous use, CII
Initial U.S. Approval: 1986

WARNING: ADDICTION, ABUSE, AND MISUSE

See full prescribing information for complete boxed warning.

Alfentanil injection exposes users to risks of addiction, abuse, and misuse, which can lead to overdose and death. Assess patient's risk before prescribing and monitor closely for these behaviors and conditions.
(5.1)

----- **INDICATIONS AND USAGE** -----

Alfentanil injection is an opioid indicated:

- as an analgesic adjunct given in incremental doses in the maintenance of anesthesia with barbiturate/nitrous oxide/oxygen.
- as an analgesic administered by continuous infusion with nitrous oxide/oxygen in the maintenance of general anesthesia.
- as a primary anesthetic agent for the induction of anesthesia in patients undergoing general surgery in which endotracheal intubation and mechanical ventilation are required.
- as the analgesic component for monitored anesthesia care (MAC). (1)

----- **DOSAGE AND ADMINISTRATION** -----

- Alfentanil injection should be administered only by persons specifically trained in the use of intravenous anesthetics and management of the respiratory effects of potent opioids.
- Ensure that an opioid antagonist, resuscitative and intubation equipment, and oxygen are readily available. (2.1).
- Individualize dosing based on factors such as age, body weight, physical status, underlying pathological condition, use of other drugs, type of anesthesia to be used, and the surgical procedure involved. (2.1)
- Doses of alfentanil injection vary depending on circumstances .(see dosing chart 2.2)
- Reduce the dose of alfentanil injection in elderly, debilitated and obese patients. (2.4, 2.5)
- Reduce the dose of alfentanil injection when administered with CNS depressants. (2.6)

----- **DOSAGE FORMS AND STRENGTHS** -----

Solution for injection (sterile): eq. to 500 mcg/mL alfentanil base; 2 mL and 5 mL ampules. (3)

----- **CONTRAINDICATIONS** -----

Hypersensitivity to alfentanil. (4)

----- **WARNINGS AND PRECAUTIONS** -----

- Risks of Muscle Rigidity and Skeletal Muscle Movement: Manage with neuromuscular blocking agent. See full prescribing information for more detail on managing these risks. (5.4)
- Life-Threatening Respiratory Depression in Patients with Chronic Pulmonary Disease or in Elderly, Cachectic, and Debilitated Patients: Monitor closely, particularly during initiation and titration. (5.2)
- Serotonin Syndrome: Potentially life-threatening condition could result from concomitant serotonergic drug administration. Discontinue alfentanil injection if serotonin syndrome is suspected. (5.6)
- Risks of Use in Patients with Increased Intracranial Pressure, Brain Tumors, and Head Injury: Monitor for sedation and respiratory depression. (5.9)

----- **ADVERSE REACTIONS** -----

Most common adverse reactions were apnea, rigidity, and bradycardia. (6)

To report SUSPECTED ADVERSE REACTIONS, contact Pfizer, Inc. at 1-800-438-1985 or FDA at 1-800-FDA-1088 or www.fda.gov/medwatch.

----- **DRUG INTERACTIONS** -----

- Concomitant Use of CNS Depressants: May decrease pulmonary arterial pressure and may cause hypotension. See FPI

for management instructions. For post-operative pain, start with the lowest effective dosage and monitor for potentiation of CNS depressant effects. (5.5, 7)

- **Mixed Agonist/Antagonist and Partial Agonist Opioid Analgesics:** Avoid use with alfentanil injection because they may reduce analgesic effect of alfentanil injection or precipitate withdrawal symptoms. (7)

----- **USE IN SPECIFIC POPULATIONS** -----

- **Pregnancy:** May cause fetal harm. (8.1)
- **Lactation:** Infants exposed to alfentanil injection through breast milk should be monitored for excess sedation and respiratory depression. (8.2)

Revised: 10/2020

FULL PRESCRIBING INFORMATION: CONTENTS*

WARNING: ADDICTION, ABUSE, AND MISUSE

1 INDICATIONS AND USAGE

2 DOSAGE AND ADMINISTRATION

- 2.1 Important Dosage and Administration Instructions
- 2.2 Dosage
- 2.3 Discontinuation of Alfentanil Injection
- 2.4 Dosage Modification in Elderly Patients
- 2.5 Dosage Modifications in Obese Patients
- 2.6 Dosage Modifications with Concomitant Use with Other CNS Depressants

3 DOSAGE FORMS AND STRENGTHS

4 CONTRAINDICATIONS

5 WARNINGS AND PRECAUTIONS

- 5.1 Addiction, Abuse, and Misuse
- 5.2 Life-Threatening Respiratory Depression
- 5.3 Risks of Concomitant Use or Discontinuation of Cytochrome P450 3A4 Inhibitors and Inducers
- 5.4 Risks of Muscle Rigidity and Skeletal Muscle Movement
- 5.5 Risks from Concomitant Use with Benzodiazepines or Other CNS Depressants
- 5.6 Serotonin Syndrome with Concomitant Use of Serotonergic Drugs
- 5.7 Potentiation of Monoamine Oxidase Inhibitors
- 5.8 Bradycardia
- 5.9 Risks of Use in Patients with Increased Intracranial Pressure, Brain Tumors, or Head Injury
- 5.10 Risks of Use in Patients with Gastrointestinal Conditions
- 5.11 Increased Risk of Seizures in Patients with Convulsive or Seizure Disorders
- 5.12 Risks due to Hypersensitivity Reactions

6 ADVERSE REACTIONS

- 6.1 Clinical Trials Experience
- 6.2 Postmarketing Experience

7 DRUG INTERACTIONS

8 USE IN SPECIFIC POPULATIONS

- 8.1 Pregnancy
- 8.2 Lactation
- 8.3 Females and Males of Reproductive Potential
- 8.4 Pediatric Use
- 8.5 Geriatric Use
- 8.6 Hepatic Impairment
- 8.7 Renal Impairment
- 8.8 Respiratory Impairment

9 DRUG ABUSE AND DEPENDENCE

9.1 Controlled Substance

9.2 Abuse

9.3 Dependence

10 OVERDOSAGE

11 DESCRIPTION

12 CLINICAL PHARMACOLOGY

12.1 Mechanism of Action

12.2 Pharmacodynamics

12.3 Pharmacokinetics

13 NONCLINICAL TOXICOLOGY

13.1 Carcinogenesis, Mutagenesis, Impairment of Fertility

16 HOW SUPPLIED/STORAGE AND HANDLING

HOW SUPPLIED

* Sections or subsections omitted from the full prescribing information are not listed.

FULL PRESCRIBING INFORMATION

WARNING: ADDICTION, ABUSE, AND MISUSE

Addiction, Abuse, and Misuse

Alfentanil injection exposes patients and other users to the risks of opioid addiction, abuse, and misuse, which can lead to overdose and death. Assess each patient's risk prior to prescribing alfentanil injection, and monitor all patients regularly for the development of these behaviors and conditions [see Warnings and Precautions (5.1)].

1 INDICATIONS AND USAGE

Alfentanil injection is indicated:

- as an analgesic adjunct given in incremental doses in the maintenance of anesthesia with barbiturate/nitrous oxide/oxygen.
- as an analgesic administered by continuous infusion with nitrous oxide/oxygen in the maintenance of general anesthesia.
- as a primary anesthetic agent for the induction of anesthesia in patients undergoing general surgery in which endotracheal intubation and mechanical ventilation are required.
- as the analgesic component for monitored anesthesia care (MAC).

2 DOSAGE AND ADMINISTRATION

2.1 Important Dosage and Administration Instructions

Alfentanil injection should be administered only by persons specifically trained in the use of intravenous anesthetics and management of the respiratory effects of potent opioids.

In patients administered high doses of alfentanil injection, it is essential that qualified personnel and adequate facilities are available for the management of postoperative respiratory depression.

- Ensure that an opioid antagonist, resuscitative and intubation equipment, and oxygen are readily available.
- Individualize dosage based on factors such as age, body weight, physical status, underlying pathological condition, use of other drugs, type of anesthesia to be used, and the surgical procedure

involved.

- The selection of preanesthetic medications should be based upon the needs of the individual patient.
- The neuromuscular blocking agent selected should be compatible with the patient's condition, taking into account the hemodynamic effects of a particular muscle relaxant and the degree of skeletal muscle relaxation required.
- Patients receiving monitored anesthesia care (MAC) should be continuously monitored by persons not involved in the conduct of the surgical or diagnostic procedure; oxygen supplementation should be immediately available and provided where clinically indicated; oxygen saturation should be continuously monitored; the patient should be observed for early signs of hypotension, apnea, upper airway obstruction and/or oxygen desaturation.
- Delayed respiratory depression, respiratory arrest, bradycardia, asystole, arrhythmias and hypotension have also been reported. Therefore, vital signs must be monitored continuously, including following the termination of surgery.
- Inspect parenteral drug products visually for particulate matter and discoloration prior to administration, whenever solution and container permit.
- For purposes of administering small volumes of alfentanil injection accurately, the use of a tuberculin syringe or equivalent is recommended.

As with other potent opioids, the respiratory depressant effect of alfentanil may persist longer than the measured analgesic effect. The total dose of all opioid agonists administered should be considered by the practitioner before ordering opioid analgesics during recovery from anesthesia.

If alfentanil injection is administered with a CNS depressant, become familiar with the properties of each drug, particularly each product's duration of action. In addition, when such a combination is used, fluids and other countermeasures to manage hypotension should be available [*see Warnings and Precautions (5.5)*].

The physical and chemical compatibility of alfentanil injection have been demonstrated in solution with normal saline, 5% dextrose in normal saline, 5% dextrose in water and Lactated Ringers. Clinical studies of alfentanil injection infusion have been conducted with alfentanil injection diluted to a concentration range of 25 mcg/mL to 80 mcg/mL.

As an example of the preparation of alfentanil injection for infusion, 20 mL of alfentanil injection added to 230 mL of diluent provides 40 mcg/mL solution of alfentanil.

2.2 Dosage

The dosage of alfentanil injection should be individualized and titrated to the desired effect in each patient according to body weight, physical status, underlying pathological condition, use of other drugs, and type and duration of surgical procedure and anesthesia. The dose of alfentanil injection should be reduced in elderly or debilitated patients [*see Warnings and Precautions (5.6)*].

See Dosing Chart for the use of alfentanil injection

- 1) by incremental injection as an analgesic adjunct to anesthesia with barbiturate/nitrous oxide/oxygen for short surgical procedures (expected duration of less than one hour);
- 2) by continuous infusion as a maintenance analgesic with nitrous oxide/oxygen for general surgical procedures; and
- 3) by intravenous injection in anesthetic doses for the induction of anesthesia for general surgical procedures with a minimum expected duration of 45 minutes; and
- 4) by intravenous injection as the analgesic component for monitored anesthesia care (MAC).

When administering alfentanil as induction doses, administer the dose slowly (over three minutes). Because administration of the induction dose may produce loss of vascular tone and hypotension, consider given to fluid replacement prior to induction.

Table 1: Dosing Chart For Use During General Anesthesia

<p>Spontaneously Breathing/Assisted Ventilation</p>	<p>Induction of Analgesia: 8 to 20 mcg/kg Maintenance of Analgesia: 3 to 5 mcg/kg q 5 to 20 min or 0.5 to 1 mcg/kg/min Total dose: 8 to 40 mcg/kg</p>
<p>Assisted or Controlled Ventilation - Assisted or Controlled Ventilation Incremental Injection <i>(To attenuate response to laryngoscopy and intubation)</i></p>	<p>Induction of Analgesia: 20 to 50 mcg/kg Maintenance of Analgesia: 5 to 15 mcg/kg q 5 to 20 min Total dose: Up to 75 mcg/kg</p>
<p>Assisted or Controlled Ventilation - Continuous Infusion <i>(To provide attenuation of response to intubation and incision)</i></p>	<p>Induction of Analgesia: 50 to 75 mcg/kg Maintenance of Analgesia: 0.5 to 3 mcg/kg/min (Average rate 1 to 1.5 mcg/kg/min) Infusion rates are variable and should be titrated to the desired clinical effect. See Infusion Dosage Guidelines Below Total dose: Dependent on duration of procedure</p>
<p>Anesthetic Induction</p>	<p>Induction of Anesthesia: 130 to 245 mcg/kg Administer slowly (over 3 minutes). Maintenance of Anesthesia: 0.5 to 1.5 mcg/kg/min or general anesthetic. Infusion rates are variable and should be titrated to the desired clinical effect. See Infusion Dosage Guidelines Below Total dose: Dependent on duration of procedure At these doses truncal rigidity should be expected and a muscle relaxant should be utilized. In patients administered anesthetic (induction) dosages of alfentanil injection, it is essential that qualified personnel and adequate facilities are available for the management of intraoperative and postoperative respiratory depression.</p>
<p>MONITORED ANESTHESIA CARE (MAC) <i>(For sedated and responsive, spontaneously breathing patients)</i></p>	<p>Induction of MAC: 3 to 8 mcg/kg Maintenance of MAC: 3 to 5 mcg/kg q 5 to 20 min or 0.25 to 1 mcg/kg/min Infusion rates are variable and should be titrated to the desired clinical effect. See Infusion Dosage Guidelines Below Total dose: 3 to 40 mcg/kg Patients receiving monitored anesthesia care (MAC) should be continuously monitored by persons not involved in the conduct of the surgical or diagnostic procedure</p>
<p>Infusion Dosage Guidelines For Continuous Infusion: 0.5 to 3 mcg/kg/min administered with nitrous oxide/oxygen in patients undergoing general surgery.</p>	

Following an anesthetic induction dose of alfentanil injection, alfentanil infusion rate requirements are reduced by 30% to 50% for the first hour of maintenance. Requirements for volatile inhalation anesthetics are also reduced by 30% to 50% for the first hour of maintenance.

Changes in vital signs that indicate a response to surgical stress or lightening of anesthesia may be controlled by increasing the alfentanil injection to a maximum of 4 mcg/kg/min and/or administration of bolus doses of 7 mcg/kg. If changes are not controlled after three bolus doses given over a five-minute period, a barbiturate, vasodilator, and/or inhalation agent should be used. Infusion rates should always be adjusted downward in the absence of these signs until there is some response to surgical stimulation. Rather than an increase in infusion rate, 7 mcg/kg bolus doses of alfentanil injection or a potent inhalation agent should be administered in response to signs of lightening of anesthesia within the last 15 minutes of surgery. Alfentanil injection infusion should be discontinued at least 10 to 15 minutes prior to the end of surgery.

In patients administered anesthetic (induction) dosages of alfentanil injection, it is essential that qualified personnel and adequate facilities are available for the management of intraoperative and postoperative respiratory depression.

2.3 Discontinuation of Alfentanil Injection

Alfentanil injection infusions should be discontinued at least 10 to 15 minutes prior to the end of surgery during general anesthesia. During administration of alfentanil injection for Monitored Anesthesia Care (MAC), infusions may be continued to the end of the procedure.

2.4 Dosage Modification in Elderly Patients

Reduce the initial dose of alfentanil injection in elderly patients by up to 40% due to reduced clearance and increased sensitivity to the effects [see *Specific Populations (8.5)*]. The effect of the initial dose should be considered in determining supplemental doses.

2.5 Dosage Modifications in Obese Patients

In obese patients (more than 20% above ideal body weight) the dose of alfentanil injection should be determined on the basis of lean body weight.

2.6 Dosage Modifications with Concomitant Use with Other CNS Depressants

Other CNS depressant drugs (e.g. barbiturates, tranquilizers, narcotics and general anesthetics) will have additive or potentiating effects with alfentanil injection. When patients have received such drugs, the dose of alfentanil injection, required will be less than usual. Following the administration of alfentanil injection, the dose of other CNS depressant drugs should be reduced [see *Drug Interactions (7)*].

3 DOSAGE FORMS AND STRENGTHS

Alfentanil Injection USP, for intravenous use (equivalent to 500 mcg/mL alfentanil base).

4 CONTRAINDICATIONS

Alfentanil injection is contraindicated in patients with:

- Hypersensitivity to alfentanil (e.g., anaphylaxis) [see *Adverse Reactions (6)*]

5 WARNINGS AND PRECAUTIONS

5.1 Addiction, Abuse, and Misuse

Alfentanil injection contains alfentanil, a Schedule II controlled substance. As an opioid, alfentanil

injection exposes users to the risks of addiction, abuse, and misuse [see *Drug Abuse and Dependence (9)*].

Opioids are sought by drug abusers and people with addiction disorders and are subject to criminal diversion. Consider these risks when handling alfentanil injection. Strategies to reduce these risks include proper product storage and control practices for a C-II drug. Contact local and state professional licensing board or state controlled substances authority for information on how to prevent and detect abuse or diversion of this product.

5.2 Life-Threatening Respiratory Depression

Serious, life-threatening, or fatal respiratory depression has been reported with the use of opioids, even when used as recommended. Respiratory depression, if not immediately recognized and treated, may lead to respiratory arrest and death. Alfentanil injection should be administered only by persons specifically trained in the use of anesthetic drugs and the management of the respiratory effects of potent opioids, including respiration and cardiac resuscitation of patients in the age group being treated. Such training must include the establishment and maintenance of a patent airway and assisted ventilation. Adequate facilities should be available for postoperative monitoring and ventilation of patients administered anesthetic doses of alfentanil injection. It is essential that these facilities be fully equipped to handle all degrees of respiratory depression. Management of respiratory depression may include close observation, supportive measures, and use of opioid antagonists, depending on the patient's clinical status [see *Overdosage (10)*]. Carbon dioxide (CO₂) retention from opioid-induced respiratory depression can exacerbate the sedating effects of opioids.

As with other potent opioids, the respiratory depressant effect of alfentanil injection may persist longer than the measured analgesic effect. The total dose of all opioid agonists administered should be considered by the practitioner before ordering opioid analgesics during recovery from anesthesia.

Certain forms of conduction anesthesia, such as spinal anesthesia and some epidural anesthetics, can alter respiration by blocking intercostal nerves [see *Clinical Pharmacology (12.2)*]. Alfentanil injection can also alter respiration. Therefore, when alfentanil injection is used to supplement these forms of anesthesia, the anesthetist should be familiar with the physiological alterations involved, and be prepared to manage them in the patients selected for these forms of anesthesia.

Patients with significant chronic obstructive pulmonary disease or cor pulmonale, and those with a substantially decreased respiratory reserve, hypoxia, hypercapnia, or pre-existing respiratory depression are at increased risk of decreased respiratory drive including apnea, even at recommended dosages of alfentanil injection. Elderly, cachectic, or debilitated patients may have altered pharmacokinetics or altered clearance compared to younger, healthier patients resulting in greater risk for respiratory depression.

Monitor such patients closely including vital signs, particularly when initiating and titrating alfentanil injection and when alfentanil injection is given concomitantly with other drugs that depress respiration. To reduce the risk of respiratory depression, proper dosing and titration of alfentanil injection are essential [see *Dosage and Administration (2)*].

Opioids can cause sleep-related breathing disorders including central sleep apnea (CSA) and sleep-related hypoxemia. Opioid use increases the risk of CSA in a dose-dependent fashion. In patients who present with CSA, consider decreasing the opioid dosage using best practices for opioid taper [see *Dosage and Administration (2.1)*].

5.3 Risks of Concomitant Use or Discontinuation of Cytochrome P450 3A4 Inhibitors and Inducers

Concomitant use of alfentanil injection with a CYP3A4 inhibitor, such as macrolide antibiotics (e.g., erythromycin), azole-antifungal agents (e.g., ketoconazole), and protease inhibitors (e.g., ritonavir), may increase plasma concentrations of alfentanil injection and prolong opioid adverse reactions, which may exacerbate fatal respiratory depression [see *Warnings and Precautions (5.4)*], particularly when an

inhibitor is added after a stable dose of alfentanil injection is achieved. Similarly, discontinuation of a CYP3A4 inducer, such as rifampin, carbamazepine, and phenytoin, in alfentanil injection-treated patients may increase alfentanil plasma concentrations and prolong opioid adverse reactions. When using alfentanil injection with CYP3A4 inhibitors or discontinuing CYP3A4 inducers in alfentanil injection-treated patients, monitor patients closely at frequent intervals and consider dosage reduction of alfentanil injection [see *Dosage and Administration (2.1)*, *Drug Interactions (7)*].

Concomitant use of alfentanil injection with CYP3A4 inducers or discontinuation of an CYP3A4 inhibitor could result in lower than expected alfentanil plasma concentrations, and decrease efficacy. When using alfentanil injection with CYP3A4 inducers or discontinuing CYP3A4 inhibitors, monitor patients closely at frequent intervals and consider increasing alfentanil injection dosage [see *Dosage and Administration (2.1)*, *Drug Interactions (7)*].

5.4 Risks of Muscle Rigidity and Skeletal Muscle Movement

Alfentanil injection administered in initial dosages up to 20 mcg/kg may cause skeletal muscle rigidity, particularly of the truncal muscles. The incidence and severity of muscle rigidity is usually dose-related. Administration of alfentanil injection at anesthetic induction dosages (above 130 mcg/kg) will consistently produce muscular rigidity with an immediate onset. The onset of muscular rigidity occurs earlier than with other opioids. Alfentanil may produce muscular rigidity that involves all skeletal muscles, including those of the neck and extremities. The incidence may be reduced by: 1) routine methods of administration of neuromuscular blocking agents for balanced opioid anesthesia; 2) administration of up to 1/4 of the full paralyzing dose of a neuromuscular blocking agent just prior to administration of alfentanil injection at dosages up to 130 mcg/kg; following loss of consciousness, a full paralyzing dose of a neuromuscular blocking agent should be administered; or 3) simultaneous administration of alfentanil injection and a full paralyzing dose of a neuromuscular blocking agent when alfentanil injection is used in rapidly administered anesthetic dosages (above 130 mcg/kg).

The neuromuscular blocking agent used should be appropriate for the patient's cardiovascular status. Adequate facilities should be available for postoperative monitoring and ventilation of patients administered alfentanil injection. It is essential that these facilities be fully equipped to handle all degrees of respiratory depression.

Patients receiving monitored anesthesia care (MAC) should be continuously monitored by persons not involved in the conduct of the surgical or diagnostic procedure; oxygen supplementation should be immediately available and provided where clinically indicated; oxygen saturation should be continuously monitored; the patient should be observed for early signs of hypotension, apnea, upper airway obstruction and/or oxygen desaturation.

5.5 Risks from Concomitant Use with Benzodiazepines or Other CNS Depressants

When alfentanil injection is used with CNS depressants, hypotension can occur. If it occurs, consider the possibility of hypovolemia and manage with appropriate parenteral fluid therapy. When operative conditions permit, consider repositioning the patient to improve venous return to the heart. Exercise care in moving and repositioning of patients because of the possibility of orthostatic hypotension. If volume expansion with fluids plus other countermeasures do not correct hypotension, consider administration of pressor agents other than epinephrine. Epinephrine may paradoxically decrease blood pressure in patients treated with a neuroleptic that blocks alpha adrenergic activity [see *Drug Interactions (7)*].

5.6 Serotonin Syndrome with Concomitant Use of Serotonergic Drugs

Cases of serotonin syndrome, a potentially life-threatening condition, have been reported during concomitant use of alfentanil injection with serotonergic drugs. Serotonergic drugs include selective serotonin reuptake inhibitors (SSRIs), serotonin and norepinephrine reuptake inhibitors (SNRIs), tricyclic antidepressants (TCAs), triptans, 5-HT₃ receptor antagonists, drugs that affect the serotonergic neurotransmitter system (e.g., mirtazapine, trazodone, tramadol), certain muscle relaxants

(i.e., cyclobenzaprine, metaxalone), and drugs that impair metabolism of serotonin (including MAO inhibitors, both those intended to treat psychiatric disorders and also others, such as linezolid and intravenous methylene blue) [see *Drug Interactions (7)*]. This may occur within the recommended dosage range.

Serotonin syndrome symptoms may include mental status changes (e.g., agitation, hallucinations, coma), autonomic instability (e.g., tachycardia, labile blood pressure, hyperthermia), neuromuscular aberrations (e.g., hyperreflexia, incoordination, rigidity), and/or gastrointestinal symptoms (e.g., nausea, vomiting, diarrhea). The onset of symptoms generally occurs within several hours to a few days of concomitant use, but may occur later than that. Discontinue alfentanil injection if serotonin syndrome is suspected.

5.7 Potentiation of Monoamine Oxidase Inhibitors

Severe and unpredictable potentiation of monoamine oxidase (MAO) inhibitors has been reported rarely with alfentanil. Therefore when alfentanil injection is administered to patients who have received MAO inhibitors within 14 days, appropriate monitoring and ready availability of vasodilators and beta-blockers for the treatment of hypertension is recommended.

5.8 Bradycardia

Alfentanil can cause bradycardia. Severe bradycardia and asystole have been successfully treated with atropine and conventional resuscitative methods. Monitor patients closely while receiving alfentanil injection have atropine and other resuscitative equipment present.

5.9 Risks of Use in Patients with Increased Intracranial Pressure, Brain Tumors, or Head Injury

In patients who may be susceptible to the intracranial effects of CO₂ retention (e.g., those with evidence of increased intracranial pressure or brain tumors), alfentanil injection may reduce respiratory drive, and the resultant CO₂ retention can further increase intracranial pressure. Monitor such patients for signs of increasing intracranial pressure.

5.10 Risks of Use in Patients with Gastrointestinal Conditions

Alfentanil may cause spasm of the sphincter of Oddi. Opioids may cause increases in serum amylase. Monitor patients with biliary tract disease, including acute pancreatitis for worsening symptoms.

5.11 Increased Risk of Seizures in Patients with Convulsive or Seizure Disorders

Alfentanil may increase the frequency of seizures in patients with seizure disorders, and may increase the risk of seizures occurring in other clinical settings associated with seizures. Monitor patients with a history of seizure disorders for worsened seizure control during alfentanil injection therapy.

5.12 Risks due to Hypersensitivity Reactions

Alfentanil injection may cause anaphylaxis reactions. Care should be exercised when administering to patients with known hypersensitivity to alfentanil or other opioid analgesics.

6 ADVERSE REACTIONS

The following serious adverse reactions are described, or described in greater detail, in other sections:

- Addiction, Abuse, and Misuse [see *Warnings and Precautions (5.1)*]
- Life-Threatening Respiratory Depression [see *Warnings and Precautions (5.2)*]
- Muscle Rigidity and Skeletal Muscle Movement [see *Warnings and Precautions (5.4)*]
- Interactions with Benzodiazepines and CNS Depressants [see *Warnings and Precautions (5.5)*]
- Serotonin Syndrome [see *Warnings and Precautions (5.7)*]
- Bradycardia [see *Warnings and Precautions (5.8)*]

- Gastrointestinal Adverse Reactions [see Warnings and Precautions (5.11)]
- Seizures [see Warnings and Precautions (5.12)]

6.1 Clinical Trials Experience

Because clinical trials are conducted under widely varying conditions, adverse reaction rates observed in the clinical trials of a drug cannot be directly compared to rates in the clinical trials of another drug and may not reflect the rates observed in practice.

The following adverse reaction information is derived from controlled and open clinical trials in 785 patients who received intravenous alfentanil injection during induction and maintenance of general anesthesia. The controlled trials included treatment comparisons with fentanyl, thiopental sodium, enflurane, saline placebo and halothane. The incidence of certain side effects is influenced by the type of use, e.g., chest wall rigidity has a higher reported incidence in clinical trials of alfentanil injection induction, and by the type of surgery, e.g., nausea and vomiting have a higher reported incidence in patients undergoing gynecologic surgery. The overall reports of nausea and vomiting with alfentanil were comparable to fentanyl.

Incidence Greater than 1% - Probably Causally Related (Derived from clinical trials)

Gastrointestinal: Nausea (28%), vomiting (18%)

Cardiovascular: Arrhythmia, bradycardia (14%), hypertension (18%), hypotension (10%), tachycardia (12%)

Musculoskeletal: Chest wall rigidity (17%), skeletal muscle movements¹

Respiratory: Apnea¹, postoperative respiratory depression

Central Nervous System: Blurred vision, dizziness¹, sleepiness/postoperative sedation

Incidence Less than 1% - Probably Causally Related (Derived from clinical trials)

Adverse events reported in post-marketing surveillance, not seen in clinical trials, are *italicized*.

Body as a whole: *Anaphylaxis*

Central Nervous System: Headache², *myoclonic movements*, postoperative confusion², postoperative euphoria², shivering²

Dermatological: Itching², urticaria²

Injection Site: Pain²

Musculoskeletal: Skeletal muscle rigidity of neck and extremities

Respiratory: Bronchospasm, hypercarbia², laryngospasm²

¹ Incidence 3% to 9%; all others 1% to 3%

² Incidence 0.3% to 1%

6.2 Postmarketing Experience

The following adverse reactions have been identified during post approval use of alfentanil. Because these reactions are reported voluntarily from a population of uncertain size, it is not always possible to reliably estimate their frequency or establish a causal relationship to drug exposure.

Serotonin syndrome: Cases of serotonin syndrome, a potentially life-threatening condition, have been reported during concomitant use of opioids with serotonergic drugs.

Adrenal insufficiency: Cases of adrenal insufficiency have been reported with opioid use, more often following greater than one month of use.

Anaphylaxis: Anaphylaxis has been reported with ingredients contained in alfentanil injection.

Androgen deficiency: Cases of androgen deficiency have occurred with chronic use of opioids [see *Clinical Pharmacology (12.2)*].

The adverse experience profile from 696 patients receiving alfentanil for Monitored Anesthesia Care (MAC) is similar to the profile established with alfentanil during general anesthesia. Respiratory events reported during MAC included hypoxia, apnea, and bradypnea. Other adverse events reported by patients receiving alfentanil for MAC, in order of decreasing frequency, were nausea, hypotension, vomiting, pruritus, confusion, somnolence and agitation.

7 DRUG INTERACTIONS

Table 2 includes clinically significant drug interactions with alfentanil injection.

Table 2: Clinically Significant Drug Interactions with Alfentanil injection

Inhibitors of CYP3A4 and CYP2D6	
<i>Clinical Impact:</i>	The concomitant use of alfentanil injection and CYP3A4 inhibitors can increase the plasma concentration of alfentanil, resulting in increased or prolonged opioid effects. These effects could be more pronounced with concomitant use of alfentanil injection and CYP2D6 and CYP3A4 inhibitors, particularly when an inhibitor is added after a stable dose of alfentanil injection is achieved [see <i>Warnings and Precautions (5.4)</i>]. After stopping a CYP3A4 inhibitor, as the effects of the inhibitor decline, the alfentanil plasma concentration will decrease [see <i>Clinical Pharmacology (12.3)</i>], resulting in decreased opioid efficacy or a withdrawal syndrome in patients who had developed physical dependence to alfentanil.
<i>Intervention:</i>	If concomitant use is necessary, consider dosage reduction of alfentanil injection until stable drug effects are achieved [see <i>Dosage and Administration (2.2)</i>]. Monitor patients for respiratory depression and sedation at frequent intervals. If a CYP3A4 inhibitor is discontinued, consider increasing the alfentanil injection dosage until stable drug effects are achieved [see <i>Dosage and Administration (2.2)</i>]. Monitor for signs of opioid withdrawal.
<i>Examples:</i>	Macrolide antibiotics (e.g., erythromycin), azole-antifungal agents (e.g. ketoconazole), protease inhibitors (e.g., ritonavir)
CYP3A4 Inducers	
<i>Clinical Impact:</i>	The concomitant use of alfentanil injection and CYP3A4 inducers can decrease the plasma concentration of alfentanil [see <i>Clinical Pharmacology (12.3)</i>], resulting in decreased efficacy or onset of a withdrawal syndrome in patients who have developed physical dependence to alfentanil [see <i>Warnings and Precautions (5.13)</i>]. After stopping a CYP3A4 inducer, as the effects of the inducer decline, the alfentanil plasma concentration will increase [see <i>Clinical Pharmacology (12.3)</i>], which could increase or prolong both the therapeutic effects and adverse reactions, and may cause serious respiratory depression.
<i>Intervention:</i>	If concomitant use is necessary, consider increasing the alfentanil injection dosage until stable drug effects are achieved [see <i>Dosage and Administration (2.2)</i>]. Monitor for signs of opioid withdrawal. If a CYP3A4 inducer is discontinued, consider alfentanil injection dosage reduction and monitor for signs of respiratory depression.

<i>Examples:</i>	Rifampin, carbamazepine, phenytoin
Benzodiazepines and Other Central Nervous System (CNS) Depressants	
<i>Clinical Impact:</i>	Diazepam administered immediately prior to or in conjunction with high doses of alfentanil injection may produce vasodilation and hypotension, and may result in delayed recovery. Both the magnitude and duration of central nervous system and cardiovascular effects may be enhanced when alfentanil injection is administered in combination with other CNS depressants such as barbiturates, tranquilizers, opioids, or inhalation general anesthetics. Postoperative respiratory depression may be enhanced or prolonged by these agents.
<i>Intervention:</i>	Monitor patients receiving alfentanil injection and benzodiazepines or other CNS depressants for hypotension patients and prolonged respiratory depression and sedation. In such cases of combined treatment, the dose of one or both agents should be reduced. Limited clinical experience indicates that requirements for volatile inhalation anesthetics are reduced by 30% to 50% for the first sixty (60) minutes following alfentanil induction [see <i>Warnings and Precautions (5.2)</i>].
<i>Examples:</i>	Benzodiazepines and other sedatives/hypnotics, anxiolytics, tranquilizers, muscle relaxants, general anesthetics, antipsychotics, other opioids, alcohol
Serotonergic Drugs	
<i>Clinical Impact:</i>	The concomitant use of opioids with other drugs that affect the serotonergic neurotransmitter system has resulted in serotonin syndrome [see <i>Warnings and Precautions (5.7)</i>].
<i>Intervention:</i>	If concomitant use is warranted, carefully observe the patient, particularly during treatment initiation and dose adjustment. Discontinue alfentanil injection if serotonin syndrome is suspected.
<i>Examples:</i>	Selective serotonin reuptake inhibitors (SSRIs), serotonin and norepinephrine reuptake inhibitors (SNRIs), tricyclic antidepressants (TCAs), triptans, 5-HT ₃ receptor antagonists, drugs that effect the serotonin neurotransmitter system (e.g., mirtazapine, trazodone, tramadol), certain muscle relaxants (i.e., cyclobenzaprine, metaxalone), monoamine oxidase (MAO) inhibitors (those intended to treat psychiatric disorders and also others, such as linezolid and intravenous methylene blue).
Monoamine Oxidase Inhibitors	
<i>Clinical Impact:</i>	Severe and unpredictable potentiation of monoamine oxidase (MAO) inhibitors has been reported rarely with alfentanil. MAOI interactions with opioids may manifest as serotonin syndrome or opioid toxicity (e.g., respiratory depression, coma) [see <i>Warnings and Precautions (5.2)</i>]
<i>Intervention:</i>	When alfentanil injection is administered to patients who have received MAO inhibitors within 14 days, monitor patients for hypertension and ensure ready availability of vasodilators and beta-blockers for the treatment of hypertension as needed.
<i>Examples:</i>	phenelzine, tranylcypromine, linezolid
Mixed Agonist/Antagonist and Partial Agonist Opioid Analgesics	
<i>Clinical Impact:</i>	May reduce the analgesic effect of Alfentanil injection and/or precipitate withdrawal symptoms.
<i>Intervention:</i>	Avoid concomitant use.
<i>Examples:</i>	butorphanol, nalbuphine, pentazocine, buprenorphine
Muscle Relaxants	

<i>Clinical Impact:</i>	Alfentanil may enhance the neuromuscular blocking action of skeletal muscle relaxants and produce an increased degree of respiratory depression.
<i>Intervention:</i>	Monitor patients for signs of respiratory depression that may be greater than otherwise expected and decrease the dosage of alfentanil injection and/or the muscle relaxant as necessary.
Diuretics	
<i>Clinical Impact:</i>	Opioids can reduce the efficacy of diuretics by inducing the release of antidiuretic hormone.
<i>Intervention:</i>	Monitor patients for signs of diminished diuresis and/or effects on blood pressure and increase the dosage of the diuretic as needed.
Anticholinergic Drugs	
<i>Clinical Impact:</i>	The concomitant use of anticholinergic drugs may increase risk of urinary retention and/or severe constipation, which may lead to paralytic ileus.
<i>Intervention:</i>	Monitor patients for signs of urinary retention or reduced gastric motility when alfentanil injection is used concomitantly with anticholinergic drugs.
Cimetidine	
<i>Clinical Impact:</i>	Cimetidine reduces the clearance of alfentanil, extending the duration of action.
<i>Intervention:</i>	Use smaller alfentanil doses for prolonged administration and monitor closely for respiratory depression and other effects of alfentanil.
Nitrous oxide	
<i>Clinical Impact:</i>	Nitrous oxide has been reported to produce cardiovascular depression when given with higher doses of alfentanil injection.
<i>Intervention:</i>	Monitor patients for signs of cardiovascular depression that may be greater than otherwise expected.

8 USE IN SPECIFIC POPULATIONS

8.1 Pregnancy

Risk Summary

Prolonged use of opioid analgesics during pregnancy may cause neonatal opioid withdrawal syndrome. Available data with alfentanil injection in pregnant women are insufficient to inform a drug-associated risk for major birth defects and miscarriage.

In animal reproduction studies, alfentanil reduced pup birth weights and increased pup mortality when administered to pregnant rats during gestation and throughout lactation at 9 times the human dose of 335 mcg/kg per procedure. Alfentanil was embryocidal when administered to pregnant rabbits during organogenesis at 72.6 times the human dose of 335 mcg/kg per procedure. No malformations were noted in rats or rabbits treated with alfentanil during organogenesis [see Data]. The estimated background risk of major birth defects and miscarriage for the indicated population is unknown. All pregnancies have a background risk of birth defect, loss, or other adverse outcomes. In the U.S. general population, the estimated background risk of major birth defects and miscarriage in clinically recognized pregnancies is 2% to 4% and 15% to 20%, respectively.

Clinical Considerations

Fetal/Neonatal Adverse Reactions

Prolonged use of opioid analgesics during pregnancy for medical or nonmedical purposes can result in

physical dependence in the neonate and neonatal opioid withdrawal syndrome shortly after birth.

Neonatal opioid withdrawal syndrome presents as irritability, hyperactivity and abnormal sleep pattern, high pitched cry, tremor, vomiting, diarrhea and failure to gain weight. The onset, duration, and severity of neonatal opioid withdrawal syndrome vary based on the specific opioid used, duration of use, timing and amount of last maternal use, and rate of elimination of the drug by the newborn. Observe newborns for symptoms of neonatal opioid withdrawal syndrome and manage accordingly [*see Warnings and Precautions (5.3)*].

Labor or Delivery

Opioids cross the placenta and may produce respiratory depression and psycho-physiologic effects in neonates. An opioid antagonist, such as naloxone, must be available for reversal of opioid-induced respiratory depression in the neonate. Alfentanil injection is not recommended for use in pregnant women during or immediately prior to labor, when other analgesic techniques are more appropriate. Opioid analgesics, including alfentanil injection, can prolong labor through actions which temporarily reduce the strength, duration, and frequency of uterine contractions. However, this effect is not consistent and may be offset by an increased rate of cervical dilation, which tends to shorten labor. Monitor neonates exposed to opioid analgesics during labor for signs of excess sedation and respiratory depression.

Data

Animal Data

Pregnant rats were treated with intravenous alfentanil doses of 0.08, 0.31, or 1.25 mg/kg/day (2.3, 9, or 36.6 times the human total dose of 335 mcg/kg based on body surface area, respectively). No malformations or embryotoxic effects were noted despite maternal toxicity (increased mortality in the mid- and high-dose group).

Pregnant rabbits were treated with intravenous alfentanil doses of 0.08, 0.31, or 1.25 mg/kg/day (4.6, 18, or 72.6 times the human total dose of 335 mcg/kg based on body surface area, respectively). Decreased live fetuses per litter and decreased litter size in the high dose group were noted in the presence of maternal toxicity (decreased body weight gain and mortality in the high-dose group).

No evidence of malformations or adverse effects on the fetus was reported in a published study in which pregnant rats were administered 8 mg/kg/day alfentanil (232 times the human dose of 335 mcg/kg/day based on body surface area) continuously from Gestation Day 5 through Gestation Day 20 via subcutaneously implanted osmotic minipumps.

Pregnant rats were treated intravenously with alfentanil 0.08, 0.31, or 1.25 mg/kg/day (2.3, 9, or 36.6 times the human total dose of 335 mcg/day based on body surface area, respectively) during gestation and throughout lactation. Reduced birth weights and decreased pup survival were noted in the mid- and high-dose groups in the presence of maternal toxicity (increased mortality in the mid- and high-dose groups).

8.2 Lactation

Risk Summary

The developmental and health benefits of breastfeeding should be considered along with the mother's clinical need for alfentanil injection and any potential adverse effects on the breastfed infant from alfentanil injection or from the underlying maternal condition.

Clinical Considerations

Infants exposed to alfentanil injection through breast milk should be monitored for excess sedation and respiratory depression. Withdrawal symptoms can occur in breastfed infants when maternal administration of an opioid analgesic is stopped, or when breast-feeding is stopped.

8.3 Females and Males of Reproductive Potential

Infertility

Chronic use of opioids may cause reduced fertility in females and males of reproductive potential. It is not known whether these effects on fertility are reversible [see *Adverse Reactions (6.2)*].

8.4 Pediatric Use

Adequate data to support the use of alfentanil injection in children under the age of 12 years of age are not presently available.

8.5 Geriatric Use

In one clinical trial, the dose of alfentanil required to produce anesthesia, as determined by appearance of delta waves in EEG, was 40% lower in geriatric patients than that needed in healthy young patients.

The initial dose of alfentanil injection should be appropriately reduced in elderly. Patients over the age of 65 have been found to have reduced plasma clearance and extended terminal elimination which may prolong postoperative recovery.

Elderly patients (aged 65 years or older) may have increased sensitivity to alfentanil. In general, use caution when selecting a dosage for an elderly patient, usually starting at the low end of the dosing range, reflecting the greater frequency of decreased hepatic, renal, or cardiac function and of concomitant disease or other drug therapy.

Respiratory depression is the chief risk for elderly patients treated with opioids, and has occurred after large initial doses were administered to patients who were not opioid-tolerant or when opioids were co-administered with other agents that depress respiration. Titrate the dosage of alfentanil injection slowly in geriatric patients [see *Warnings and Precautions (5.6)*].

This drug is known to be substantially excreted by the kidney, and the risk of adverse reactions to this drug may be greater in patients with impaired renal function. Because elderly patients are more likely to have decreased renal function, care should be taken in dose selection, and it may be useful to monitor renal function.

8.6 Hepatic Impairment

Alfentanil injection should be administered with caution patients with liver dysfunction because of the extensive hepatic metabolism. Reduce the dosage as needed and monitor closely for signs of respiratory depression, sedation, and hypotension.

8.7 Renal Impairment

Alfentanil injection should be administered with caution to patients with kidney dysfunction because of the renal excretion of alfentanil and its metabolites. Reduce the dosage as needed and monitor for signs of respiratory depression, sedation, and hypotension.

8.8 Respiratory Impairment

Alfentanil injection should be used with caution in patients with pulmonary disease, decreased respiratory reserve, or potentially compromised respiration, in such patients opioids may additionally decrease respiratory drive and increase airway resistance. During anesthesia, this can be managed by assisted or controlled respiration.

9 DRUG ABUSE AND DEPENDENCE

9.1 Controlled Substance

Alfentanil injection contains alfentanil, a Schedule II controlled substance.

9.2 Abuse

Alfentanil injection contains alfentanil, a substance with a high potential for abuse similar to other opioids including morphine, sufentanil etc. Alfentanil injection can be abused and is subject to misuse, addiction, and criminal diversion [see *Warnings and Precautions (5.1)*].

Drug addiction is a cluster of behavioral, cognitive, and physiological phenomena that develop after repeated substance use and includes: a strong desire to take the drug, difficulties in controlling its use, persisting in its use despite harmful consequences, a higher priority given to drug use than to other activities and obligations, increased tolerance, and sometimes a physical withdrawal.

Alfentanil injection, like other opioids, can be diverted for non-medical use into illicit channels of distribution. Careful record-keeping of prescribing information, including quantity, frequency, and renewal requests, as required by state and federal law, is strongly advised.

Proper assessment of the patient, proper prescribing practices, periodic re-evaluation of therapy, and proper dispensing and storage are appropriate measures that help to limit abuse of opioid drugs.

Risks Specific to Abuse of Alfentanil Injection

Abuse of Alfentanil Injection poses a risk of overdose and death. The risk is increased with concurrent use of Alfentanil Injection with alcohol and other central nervous system depressants.

Parenteral drug abuse is commonly associated with transmission of infectious diseases such as hepatitis and HIV.

9.3 Dependence

Both tolerance and physical dependence can develop during chronic opioid therapy. Tolerance is the need for increasing doses of opioids to maintain a defined effect such as analgesia (in the absence of disease progression or other external factors). Tolerance may occur to both the desired and undesired effects of drugs, and may develop at different rates for different effects.

Physical dependence results in withdrawal symptoms after abrupt discontinuation or a significant dosage reduction of a drug. Withdrawal also may be precipitated through the administration of drugs with opioid antagonist activity (e.g., naloxone, nalmefene), mixed agonist/antagonist analgesics (pentazocine, butorphanol, nalbuphine), or partial agonists (buprenorphine). Physical dependence may not occur to a clinically significant degree until after several days to weeks of continued opioid usage.

Alfentanil injection should not be abruptly discontinued [see *Dosage and Administration (2.13)*]. If alfentanil injection is abruptly discontinued in a physically-dependent patient, a withdrawal syndrome may occur. Some or all of the following can characterize this syndrome: restlessness, lacrimation, rhinorrhea, yawning, perspiration, chills, myalgia, and mydriasis. Other signs and symptoms also may develop, including: irritability, anxiety, backache, joint pain, weakness, abdominal cramps, insomnia, nausea, anorexia, vomiting, diarrhea, or increased blood pressure, respiratory rate, or heart rate.

Infants born to mothers physically dependent on opioids will also be physically dependent and may exhibit respiratory difficulties and withdrawal signs [see *Use in Specific Populations (8.1)*].

10 OVERDOSAGE

Clinical Presentation

Acute overdose with alfentanil injection can be manifested by respiratory depression, somnolence progressing to stupor or coma, skeletal muscle flaccidity, cold and clammy skin, constricted pupils, and, in some cases, pulmonary edema, bradycardia, hypotension, partial or complete airway obstruction, atypical snoring, and death. Marked mydriasis rather than miosis may be seen with hypoxia in overdose situations [see *Clinical Pharmacology (12.2)*].

Treatment of Overdose

In case of overdose, priorities are the reestablishment of a patent and protected airway and institution of assisted or controlled ventilation, if needed. Employ other supportive measures (including oxygen and vasopressors) in the management of circulatory shock and pulmonary edema as indicated. Cardiac arrest or arrhythmias will require advanced life-support techniques. If respiratory depression is associated with muscular rigidity, a neuromuscular blocking agent may be required to facilitate assisted or controlled ventilation. Intravenous fluids and vasoactive agents may be required to manage hemodynamic instability.

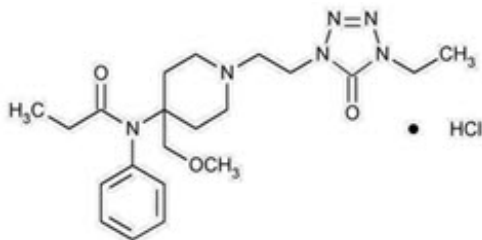
The opioid antagonists, naloxone or nalmefene, are specific antidotes to respiratory depression resulting from opioid overdose. For clinically significant respiratory or circulatory depression secondary to alfentanil overdose, administer an opioid antagonist. Opioid antagonists should not be administered in the absence of clinically significant respiratory or circulatory depression secondary to alfentanil overdose.

Because the duration of opioid reversal is expected to be less than the duration of action of alfentanil in alfentanil injection, carefully monitor the patient until spontaneous respiration is reliably re-established. If the response to an opioid antagonist is suboptimal or only brief in nature, administer additional antagonist as directed by the product's prescribing information.

In an individual physically dependent on opioids, administration of the recommended usual dosage of the antagonist will precipitate an acute withdrawal syndrome. The severity of the withdrawal symptoms experienced will depend on the degree of physical dependence and the dose of the antagonist administered. If a decision is made to treat serious respiratory depression in the physically dependent patient, administration of the antagonist should be begun with care and by titration with smaller than usual doses of the antagonist.

11 DESCRIPTION

Alfentanil Injection, USP contains alfentanil, an opioid agonist, chemically designated as N- [1- [2-(4-ethyl-4,5-dihydro-5-oxo-1H-tetrazol-1-yl) ethyl]-4-(methoxymethyl)-4-piperidinyl]-N-phenylpropanamide monohydrochloride (1:1) with a molecular weight of 452.98 and an n-octanol: water partition coefficient of 128:1 at pH 7.4. The structural formula of Alfentanil HCl is:



Alfentanil Injection, USP is a sterile, non-pyrogenic, preservative free aqueous solution containing alfentanil hydrochloride equivalent to 500 mcg per mL of alfentanil base for intravenous injection. The solution, which contains sodium chloride for isotonicity, has a pH range of 4.0 to 6.0. Each mL contains:

Active: Alfentanil base 500 mcg.

Inactive: Sodium Chloride 9 mg and Water for Injection q.s.

12 CLINICAL PHARMACOLOGY

12.1 Mechanism of Action

Alfentanil injection is an opioid agonist. The principal actions of therapeutic value are analgesia and

sedation.

12.2 Pharmacodynamics

Effects on the Central Nervous System

Alfentanil produces respiratory depression by direct action on brain stem respiratory centers. The respiratory depression involves both a reduction in the responsiveness of the brain stem respiratory centers to increases in carbon dioxide tension and to electrical stimulation.

Alfentanil causes miosis, even in total darkness. Pinpoint pupils are a sign of opioid overdose but are not pathognomonic (e.g., pontine lesions of hemorrhagic or ischemic origins may produce similar findings). Marked mydriasis rather than miosis may be seen due to hypoxia in overdose situations.

Effects on the Gastrointestinal Tract and Other Smooth Muscle

Alfentanil causes a reduction in motility associated with an increase in smooth muscle tone in the antrum of the stomach and duodenum. Digestion of food in the small intestine is delayed and propulsive contractions are decreased. Propulsive peristaltic waves in the colon are decreased, while tone may be increased to the point of spasm resulting in constipation. Other opioid-induced effects may include a reduction in biliary and pancreatic secretions, spasm of sphincter of Oddi, and transient elevations in serum amylase.

Effects on the Cardiovascular System

Alfentanil produces peripheral vasodilation which may result in orthostatic hypotension or syncope.

Manifestations of histamine release and/or peripheral vasodilation may include pruritus, flushing, red eyes and sweating and/or orthostatic hypotension.

Effects on the Endocrine System

Opioids inhibit the secretion of ACTH, cortisol, and luteinizing hormone (LH) in humans. They also stimulate prolactin, growth hormone (GH) secretion, and pancreatic secretion of insulin and glucagon [*see Adverse Reactions (6.2)*].

Chronic use of opioids may influence the hypothalamic-pituitary-gonadal axis, leading to androgen deficiency that may manifest as low libido, impotence, erectile dysfunction, amenorrhea, or infertility. The causal role of opioids in the clinical syndrome of hypogonadism is unknown because the various medical, physical, lifestyle, and psychological stressors that may influence gonadal hormone levels have not been adequately controlled for in studies conducted to date [*see Adverse Reactions (6.2)*].

Effects on the Immune System

Opioids have been shown to have a variety of effects on components of the immune system in *in vitro* and animal models. The clinical significance of these findings is unknown. Overall, the effects of opioids appear to be modestly immunosuppressive.

Concentration–Efficacy Relationships

In one study involving 15 patients administered alfentanil with nitrous oxide/oxygen, a narrow range of plasma alfentanil concentrations, approximately 310 to 340 ng/mL, was shown to provide adequate anesthesia for intra-abdominal surgery, while lower concentrations, approximately 190 ng/mL, blocked responses to skin closure. Plasma concentrations between 100 to 200 ng/mL provided adequate anesthesia for superficial surgery.

The minimum effective analgesic concentration will vary widely among patients, especially among patients who have been previously treated with potent agonist opioids [*see Dosage and Administration (2.1)*]. The minimum effective analgesic concentration of alfentanil for any individual patient may increase over time due to an increase in pain, the development of a new pain syndrome and/or the development of analgesic tolerance.

Concentration–Adverse Reaction Relationships

There is a relationship between increasing alfentanil plasma concentration and increasing frequency of dose-related opioid adverse reactions such as nausea, vomiting, CNS effects, and respiratory depression. In opioid-tolerant patients, the situation may be altered by the development of tolerance to opioid-related adverse reactions [see *Dosage and Administration* (2.1, 2.2)].

12.3 Pharmacokinetics

Alfentanil injection is administered intravenously for the induction of analgesia and anesthesia.

Absorption

The onset of the anesthetic action is immediate when alfentanil injection is administered intravenously.

Distribution

The pharmacokinetics of alfentanil can be described as a three-compartment model with sequential distribution half-lives of 1 and 14 minutes. Alfentanil has an apparent volume of distribution of 0.4 to 1 L/kg, with an average plasma clearance of 5 mL/kg/min. Plasma protein binding of alfentanil is approximately 92%.

Elimination

Alfentanil has a terminal elimination half-life of 90 to 111 minutes.

Metabolism

The liver is the major site of biotransformation.

Excretion

Only 1% of the dose is excreted as unchanged drug; urinary excretion is the major route of elimination of metabolites.

13 NONCLINICAL TOXICOLOGY

13.1 Carcinogenesis, Mutagenesis, Impairment of Fertility

Carcinogenesis

Long-term studies in animals to evaluate the carcinogenic potential of alfentanil have not been conducted.

Mutagenesis

Alfentanil was not mutagenic in the *in vitro* bacterial reverse mutation assay (Ames test) or clastogenic in the *in vivo* micronucleus assay.

Impairment of Fertility

Female rats were treated with intravenous alfentanil beginning 14 days prior to mating and throughout gestation with doses of 0.08, 0.31, or 1.25 mg/kg (2.3, 9, or 36.3 times the human daily dose of 335 mcg/day based on body surface area, respectively) prior to mating with non-dosed males. Maternal toxicity was noted in all animals (decreased weight gain in all groups and mortality in the two highest dose groups). There was no clear effect on female fertility.

Male rats were treated intravenously with doses of 0.08, 0.31, or 1.25 mg/kg (2.3, 9, or 36.3 times the human daily dose of 335 mcg/day based on body surface area, respectively) beginning 56 days prior to mating with non-dosed females. There was reduced pregnancy rate in the untreated females mated to the high dose males; however, there was also paternal toxicity was noted in all animals (decreased weight gain in all groups and mortality in the two highest dose groups).

16 HOW SUPPLIED/STORAGE AND HANDLING

HOW SUPPLIED

Alfentanil Injection, USP for intravenous use contains alfentanil hydrochloride equivalent to 500 mcg/mL of alfentanil base and is available as:

Unit of Sale	Concentration
NDC 0409-2266-02 Carton of 10 Single-dose ampules	1000 mcg/2 mL (500 mcg/mL)
NDC 0409-2266-05 Carton of 10 Single-dose ampules	2500 mcg/5 mL (500 mcg/mL)

Alfentanil Injection, USP is supplied in individually sealed dosage forms which pose no known risk to health care providers having incidental contact. Accidental dermal exposure to alfentanil should be treated by rinsing the affected area with water.

Storage: Protect from light. Retain in carton until time of use. Store at 20° to 25°C (68 to 77°F). [See USP Controlled Room Temperature].

Distributed by
Hospira, Inc., Lake Forest, IL 60045 USA

LAB-1059-3.0

PRINCIPAL DISPLAY PANEL - 2 mL Ampule Label - IM-0831

2 mL UNI-AMP® ampul

Alfentanil Inj., USP

1000 mcg/2 mL

(500 mcg/mL)

CII

Rx only

Hospira

NDC 0409-2266-02

Hospira, Inc.

Lake Forest, IL 60045 USA

IM-0831 (10/04)

2 mL UNI-AMP® ampul

Alfentanil Inj., USP

1000 mcg/2 mL

(500 mcg/mL)

Rx only

Hospira



NDC 0409-2266-02

Hospira, Inc.

Lake Forest, IL 60045 USA

IM-0831 (10/04)



PRINCIPAL DISPLAY PANEL - 2 mL Ampule Label - RL-0833

RL-0833 (10/04)

CII

NDC 0409-2266-02

2 mL Single-dose Discard unused portion

Alfentanil Inj., USP

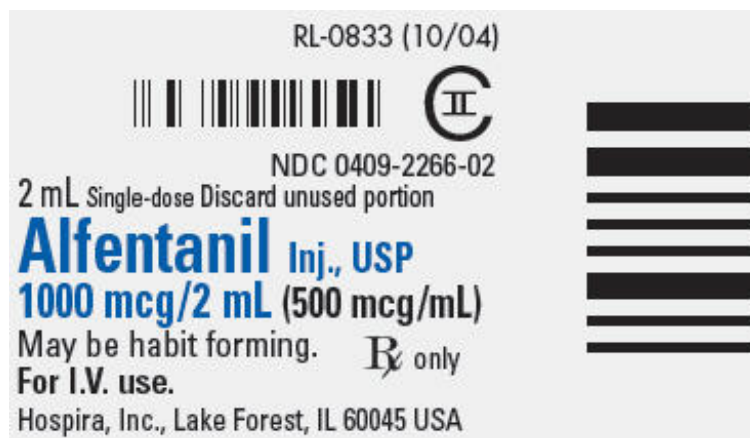
1000 mcg/2 mL (500 mcg/mL)

May be habit forming.

For I.V. use.

Rx only

Hospira, Inc., Lake Forest, IL 60045 USA



PRINCIPAL DISPLAY PANEL - 2 mL Ampul Carton

Single-dose

10-2 mL ampuls

UNI-AMP™ ampul

NDC 0409-2266-02

Discard unused portion

Alfentanil Injection, USP

1000 mcg/2 mL

(500 mcg/mL)

CII

Warning: May be habit forming.

For Intravenous Use.

Rx only

Hospira, Inc., Lake Forest, IL 60045 USA

Hospira



PRINCIPAL DISPLAY PANEL - 5 mL Ampule Label

NDC 0409-2266-05

5 mL Single-dose
Discard unused portion

CII

Alfentanil Inj., USP
2500 mcg/5 mL
(500 mcg/mL)

May be habit forming.

For I.V. use.

Store at 20 to 25°C (68 to 77°F). [See USP
Controlled Room Temperature.]

Protect from light.

Hospira, Inc.

Lake Forest, IL 60045 USA

Rx only

Hospira



PRINCIPAL DISPLAY PANEL - 5 mL Ampule Carton

Single-dose
10-5 mL ampuls
NDC 0409-2266-05
Discard unused portion
Alfentanil Injection, USP
2500 mcg/5 mL

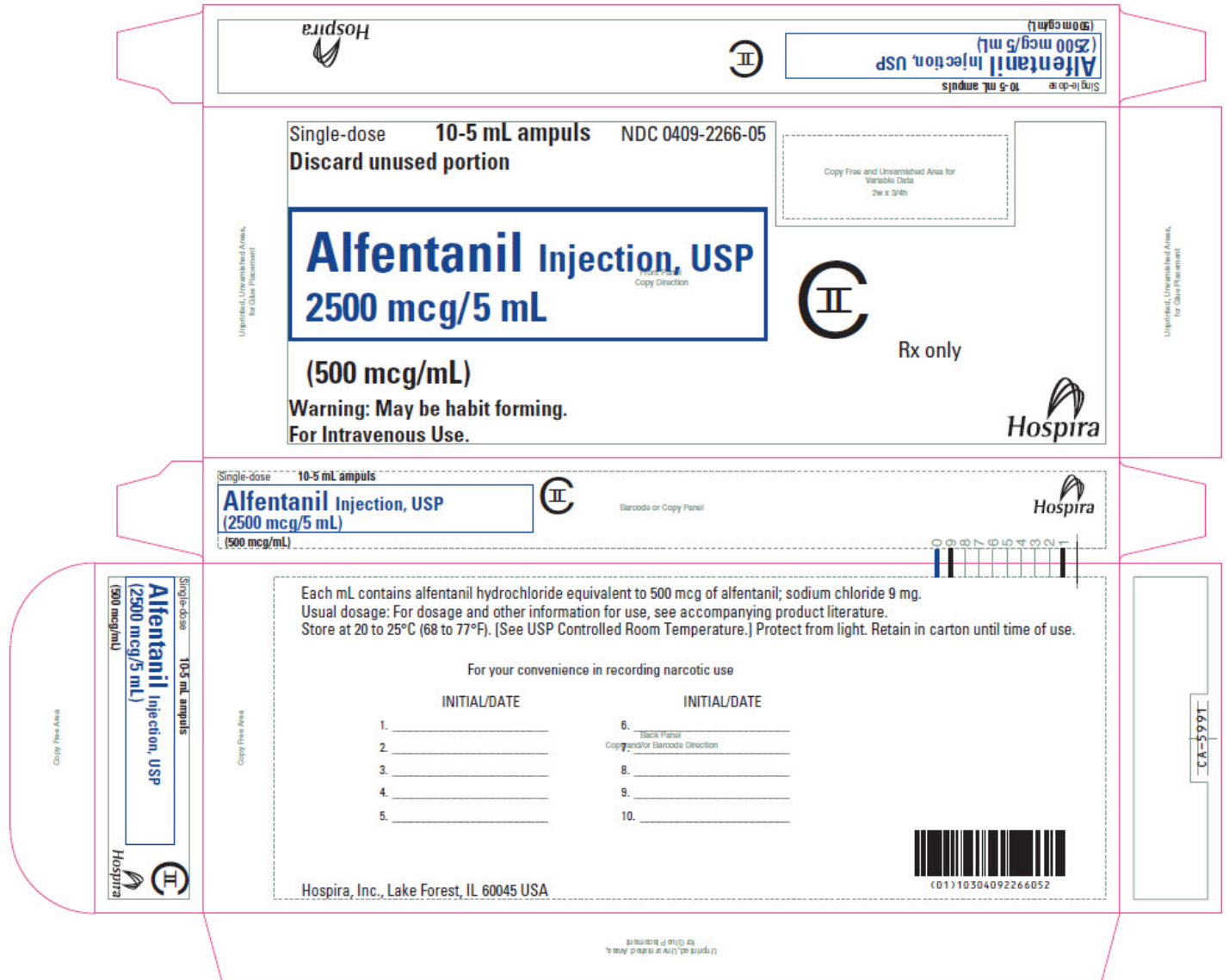
(500 mcg/mL)

Warning: May be habit forming.
For Intravenous Use.

CII

Rx only

Hospira



ALFENTANIL HYDROCHLORIDE

alfentanil hydrochloride injection, solution

Product Information

Product Type	HUMAN PRESCRIPTION DRUG	Item Code (Source)	NDC:0409-2266
Route of Administration	INTRAVENOUS	DEA Schedule	CII

Active Ingredient/Active Moiety

Ingredient Name		Basis of Strength	Strength	
ALFENTANIL HYDROCHLORIDE (UNII: 11S92G0TIW) (ALFENTANIL - UNII:1N74HM2BS7)		ALFENTANIL	500 ug in 1 mL	
Inactive Ingredients				
Ingredient Name		Strength		
SODIUM CHLORIDE (UNII: 451W47IQ8X)				
WATER (UNII: 059QF0KO0R)				
Packaging				
#	Item Code	Package Description	Marketing Start Date	Marketing End Date
1	NDC:0409-2266-02	10 in 1 CARTON	02/20/2006	05/01/2021
1		2 mL in 1 AMPULE; Type 0: Not a Combination Product		
2	NDC:0409-2266-05	10 in 1 CARTON	05/04/2006	02/01/2019
2		5 mL in 1 AMPULE; Type 0: Not a Combination Product		
Marketing Information				
Marketing Category	Application Number or Monograph Citation	Marketing Start Date	Marketing End Date	
ANDA	ANDA075221	02/20/2006	05/01/2021	

Labeler - Hospira, Inc. (141588017)

Establishment

Name	Address	ID/FEI	Business Operations
Hospira, Inc.		093132819	ANALYSIS(0409-2266) , LABEL(0409-2266) , MANUFACTURE(0409-2266) , PACK(0409-2266)

Revised: 11/2020

Hospira, Inc.