

DR DEEP DEEP FRESH- glycerin paste, dentifrice
MineralHouse Corporation

Disclaimer: Most OTC drugs are not reviewed and approved by FDA, however they may be marketed if they comply with applicable regulations and policies. FDA has not evaluated whether this product complies.

Active Ingredient: Silicon Dioxide 4%, Glycerin 6.4%

Squeeze appropriate amount of toothpaste onto your toothbrush and gently brush your teeth with a short, vertical or circular motion

For brushing teeth

Purpose: Skin Protectant

Warnings:

- For external use only
- Do not use on wounds or damaged skin

When using this product, do not use other than directed

Stop use if allergic reaction or irritation occurs

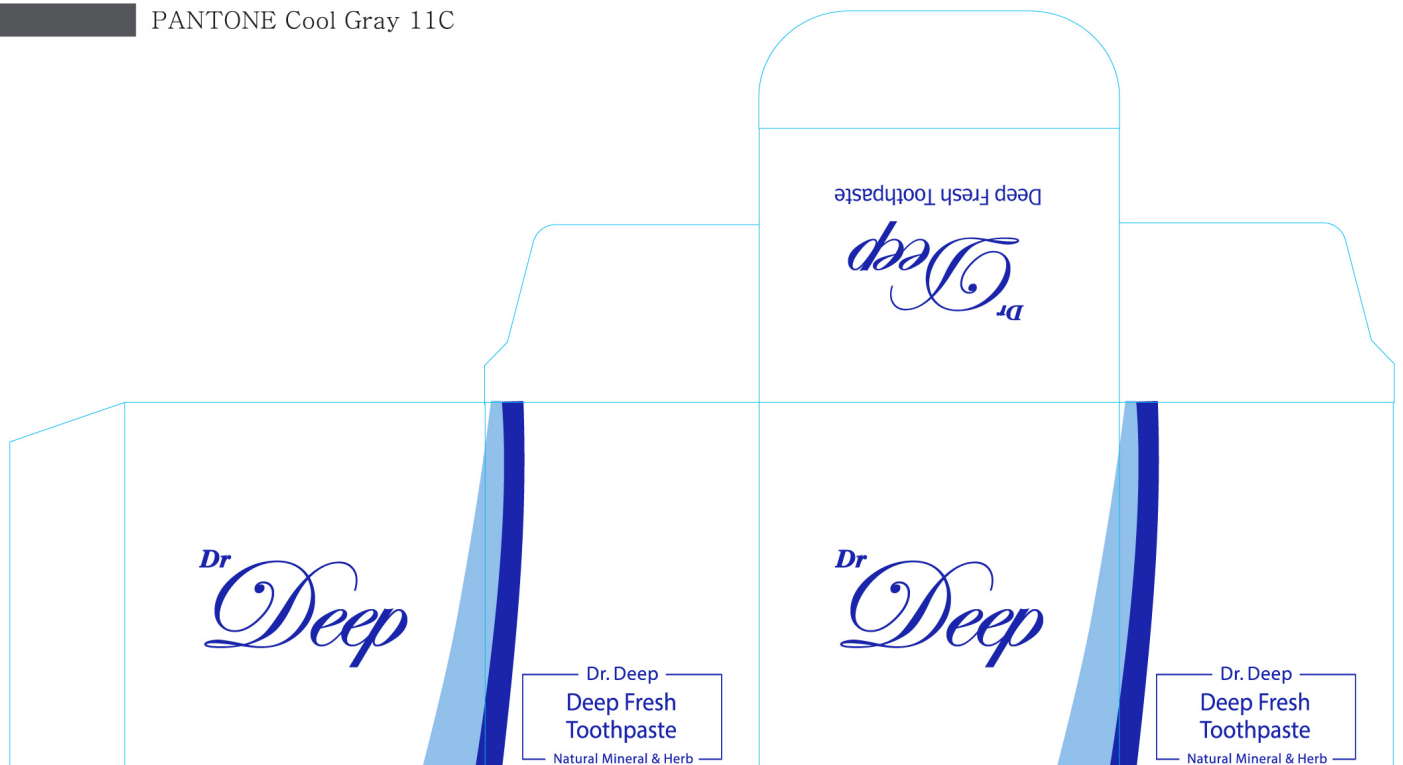
Keep out of reach of children

- If swallowed, get medical help or contact a Poison Control Center immediately

Storage: Keep in a dry and cool place

Inactive Ingredients: Aluminum Chlorohydroxy Allantoinate, Aminocaproic Acid, D-Sorbitol Solution, Polyethylene Glycol 4000, steviol Glycoside, Xylitol, Citrus Paradisi (Grapefruit) Seed Extract, Camellia Sinensis Leaf Extract, Sodium Carboxymethyl Cellulose, Cacamidopropyl Betaine, L-Menthol, Mentha Piperita (Peppermint) Oil, Aqua

-  PANTONE 2736C
-  PANTONE 283C
-  PANTONE Cool Gray 11C



Deep Fresh Toothpaste

taste of fruit after
brushing teeth
is just as sweet.

NET WT 120 g

[Inactive Ingredients]

Aluminum Chloro hydroxy Allantoinate,
Aminocaproic Acid, D-Sorbitol Solution,
Polyethylene Glycol 4000, Steviol Glucoside,
Xylitol, Citrus Paradisi (Grapefruit) Seed
Extract, Camellia Sinensis Leaf Extract,
Sodium Carboxy methyl Cellulose,
Cocamidopropyl Betaine, L-Menthol,
Mentha Piperita (Peppermint) Oil, Aqua

[Warnings]

For external use only. Keep out of
reach of children.

If swallowed, get medical help or
contact a Poison Control Center
immediately

Do not use - on wounds or damaged
skin

When using the product - do not use
other than directed

Stop using - if allergic reaction or
irritation occurs

Storage - keep in a dry and cool place

- Product Name :
Dr. Deep Deep Fresh Toothpaste
- Validity : Incribed separately
- Size : 120 g
- Manufacturer :
Sangleaf Pharm., Co Ltd
Address : 4 Sagimakgol-ro 62beon-gil,
Jungwon-gu, Songnam, Kyonggi 13210
- Development and Sales Office :
Mineral House Co., Ltd.
Address : 163 Sujeong-ro,
Sujeong-gu, Songnam,
Kyonggi 13292
- www.drdeepusa.com
+82-31-731-0102

Made in Korea

Deep Fresh Toothpaste

taste of fruit after
brushing teeth
is just as sweet.

NET WT 120 g

[Features]

- Advanced deep clean
- Helps maintain healthy, white teeth
- Gives a clean and refreshing feeling in the mouth cavity
- Prevents tooth decay and relieves bad breath
- Prevents gingivitis, periodontitis, gum disease and also removes cavity

[How to use]

Squeeze appropriate amount of
toothpaste onto your toothbrush
and gently brush your teeth with
a short, vertical or circular motion.

[Drug Facts]

- Active ingredients
- Silicon Dioxide 4%, Glycerin 6.4%
- Purpose - Skin Protectant
- Uses - For brushing teeth



DR DEEP DEEP FRESH

glycerin paste, dentifrice

Product Information

Product Type	HUMAN OTC DRUG	Item Code (Source)	NDC:76015-110
Route of Administration	DENTAL		

Active Ingredient/Active Moiety

Ingredient Name	Basis of Strength	Strength
GLYCERIN (UNII: PDC6A3C0OX) (GLYCERIN - UNII:PDC6A3C0OX)	GLYCERIN	7.68 g in 120 g

Inactive Ingredients

Ingredient Name	Strength
SILICON DIOXIDE (UNII: ETJ7Z6XBU4)	4.8 g in 120 g

ALCLOXA (UNII: 18B8O9DQA2)
AMINOCAPROIC ACID (UNII: U6F3787206)
SORBITOL (UNII: 506T60A25R)
POLYETHYLENE GLYCOL 4000 (UNII: 4R4HF16D95)
XYLITOL (UNII: VCQ006KQ1E)
CITRUS PARADISI SEED (UNII: 12F08874Y7)
GREEN TEA LEAF (UNII: W2ZU1RY8B0)
CARBOXYMETHYLCELLULOSE (UNII: 05JZI7B19X)
COCAMIDOPROPYL BETAINE (UNII: 5OCF3O11KX)
LEVOMENTHOL (UNII: BZ1R15MTK7)
MENTHA PIPERITA (UNII: 79M2M2UDA9)
WATER (UNII: 059QF0KO0R)

Packaging

#	Item Code	Package Description	Marketing Start Date	Marketing End Date
1	NDC:76015-110-01	1 in 1 PACKAGE	08/12/2016	
1		120 g in 1 TUBE; Type 0: Not a Combination Product		

Marketing Information

Marketing Category	Application Number or Monograph Citation	Marketing Start Date	Marketing End Date
OTC monograph final	part347	08/12/2016	

Labeler - MineralHouse Corporation (557802539)

Registrant - MineralHouse Corporation (557802539)

Establishment

Name	Address	ID/FEI	Business Operations
MineralHouse Corporation		557802539	relabel(76015-110) , repack(76015-110)

Establishment

Name	Address	ID/FEI	Business Operations
Sangleaf Pharm., Co. Ltd.		689847343	manufacture(76015-110)

Revised: 8/2016

MineralHouse Corporation