

COLGATE ULTRA WHITE CHARCOAL- sodium fluoride paste, dentifrice
Colgate-Palmolive Company

Disclaimer: Most OTC drugs are not reviewed and approved by FDA, however they may be marketed if they comply with applicable regulations and policies. FDA has not evaluated whether this product complies.

Colgate® Ultra White Charcoal

Drug Facts

Active ingredient

Sodium Fluoride 0.24% (0.15% w/v fluoride ion)

Purpose

Anticavity

Use

helps protect against cavities

Warnings

Keep out of reach of children under 6 years of age. If more than used for brushing is accidentally swallowed, get medical help or contact a Poison Control Center right away.

Directions

adults and children 2 years of age and older	brush teeth thoroughly, preferably after each meal or at least twice a day, or as directed by a dentist or physician
children 2 to 6 years	use only a pea sized amount and supervise child's brushing and rinsing (to minimize swallowing)
children under 2 years	ask a dentist or physician

Inactive ingredients

Sorbitol, Water, Hydrated Silica, Sodium Lauryl Sulfate, Flavor, PEG-12, Tetrasodium Pyrophosphate, Cocamidopropyl Betaine, Cellulose Gum, Sodium Saccharin, Xanthan Gum, Charcoal Powder, Blue 1, Red 40.

Questions?

1-800-468-6502

Dist. by:

COLGATE-PALMOLIVE CO.

New York, NY 10022 U.S.A.

PRINCIPAL DISPLAY PANEL - 62 g Tube Carton

Colgate®

Anticavity Fluoride Toothpaste

ULTRA

WHITE

- with Charcoal -

Formula helps lift surface stains to whiten teeth
paste

NET WT 2.2 OZ (62 g)

Colgate®

Anticavity Fluoride Toothpaste

NET WT 2.2 OZ (62 g)

ULTRA WHITE

-with Charcoal-

Formula helps lift surface stains to whiten teeth paste

Colgate®

Anticavity Fluoride Toothpaste

NET WT 2.2 OZ (62 g)

ULTRA WHITE

-with Charcoal-

Formula helps lift surface stains to whiten teeth paste

Drug Facts

Active ingredient
Sodium Fluoride 0.24% (0.15% w/v fluoride ion)....Anticavity

Purpose

Use helps protect against cavities

Warnings

Keep out of reach of children under 6 years of age. If more than used for brushing is accidentally swallowed, get medical help or contact a Poison Control Center right away.

Drug Facts (continued)

Directions

adults and children 2 years of age and older brush teeth thoroughly, preferably after each meal or at least twice a day, or as directed by a dentist or physician
 children 2 to 6 years use only a pea sized amount and supervise child's brushing and rinsing (to minimize swallowing)
 children under 2 years ask a dentist or physician

Inactive Ingredients Sorbitol, Water, Hydrated Silica, Sodium Lauryl Sulfate, Flavor, PEG-12, Tetrasodium Pyrophosphate, Cocamidopropyl Betaine, Cellulose Gum, Sodium Saccharin, Xanthan Gum, Charcoal Powder, Blue 1, Red 40.

Questions? 1-800-468-6502

smartlabel®

app enabled scan for more information



Gluten Free



Responsible Made®



Sugar Free

Colgate®

ULTRA WHITE

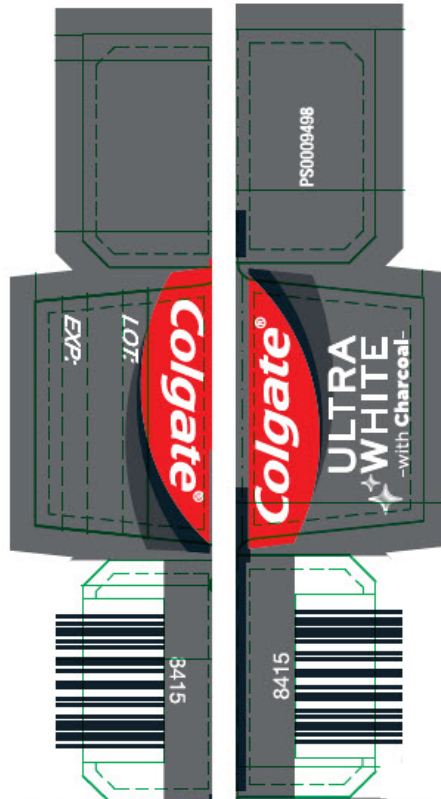
-with Charcoal-

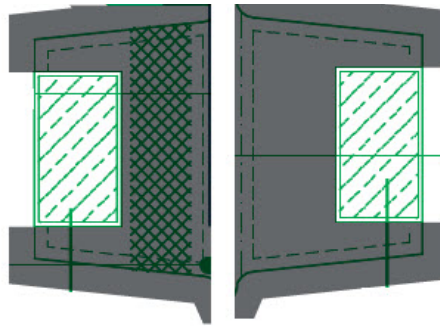
Formula helps lift surface stains to whiten teeth

SAVE WATER turn off the tap while brushing

Dist. by: COLGATE-PALMOLIVE CO.
New York, NY 10022 U.S.A.
www.colgate.com
Made in Mexico

*to learn more, visit: www.colgatepalmolive.com/responsibly-made





COLGATE ULTRA WHITE CHARCOAL

sodium fluoride paste, dentifrice

Product Information

Product Type	HUMAN OTC DRUG	Item Code (Source)	NDC:35000-418
Route of Administration	DENTAL		

Active Ingredient/Active Moiety

Ingredient Name	Basis of Strength	Strength
SODIUM FLUORIDE (UNII: 8ZYQ1474W7) (FLUORIDE ION - UNII:Q80VPU408O)	FLUORIDE ION	1.1 mg in 1 g

Inactive Ingredients

Ingredient Name	Strength
SORBITOL (UNII: 506T60A25R)	630 mg in 1 g
WATER (UNII: 059QF0KO0R)	
HYDRATED SILICA (UNII: Y6O7T4G8P9)	
SODIUM LAURYL SULFATE (UNII: 368GB5141J)	
POLYETHYLENE GLYCOL 600 (UNII: NL4J9F21N9)	
SODIUM PYROPHOSPHATE (UNII: O352864B8Z)	
COCAMIDOPROPYL BETAINE (UNII: 5OCF3011KX)	
CARBOXYMETHYLCELLULOSE SODIUM, UNSPECIFIED FORM (UNII: K679OBS311)	
SACCHARIN SODIUM (UNII: SB8ZUX40TY)	
XANTHAN GUM (UNII: TTV12P4NEE)	
ACTIVATED CHARCOAL (UNII: 2P3VWU3H10)	
FD&C BLUE NO. 1 (UNII: H3R47K3TBD)	
FD&C RED NO. 40 (UNII: WZB9127XOA)	

Product Characteristics

Color	GRAY	Score	
Shape		Size	
Flavor	MINT	Imprint Code	
Contains			

Packaging

#	Item Code	Package Description	Marketing Start Date	Marketing End Date
1	NDC:35000-418-98	1 in 1 CARTON	07/31/2020	
1		62 g in 1 TUBE; Type 0: Not a Combination Product		

Marketing Information			
Marketing Category	Application Number or Monograph Citation	Marketing Start Date	Marketing End Date
OTC MONOGRAPH FINAL	part355	07/31/2020	

Labeler - Colgate-Palmolive Company (001344381)

Revised: 8/2020

Colgate-Palmolive Company