

T-DOL XIN BAO- solid powder powder
Shenzhen Hanyuanhe Cultural Health Industry Development Co., Ltd.

Disclaimer: This homeopathic product has not been evaluated by the Food and Drug Administration for safety or efficacy. FDA is not aware of scientific evidence to support homeopathy as effective.

Inactive ingredient: Noni, Moringa, red yeast, L· arginine, patented nattokinase

Indications:Lack of protein

Usage section: orally, Add 150ml of water at room temperature every

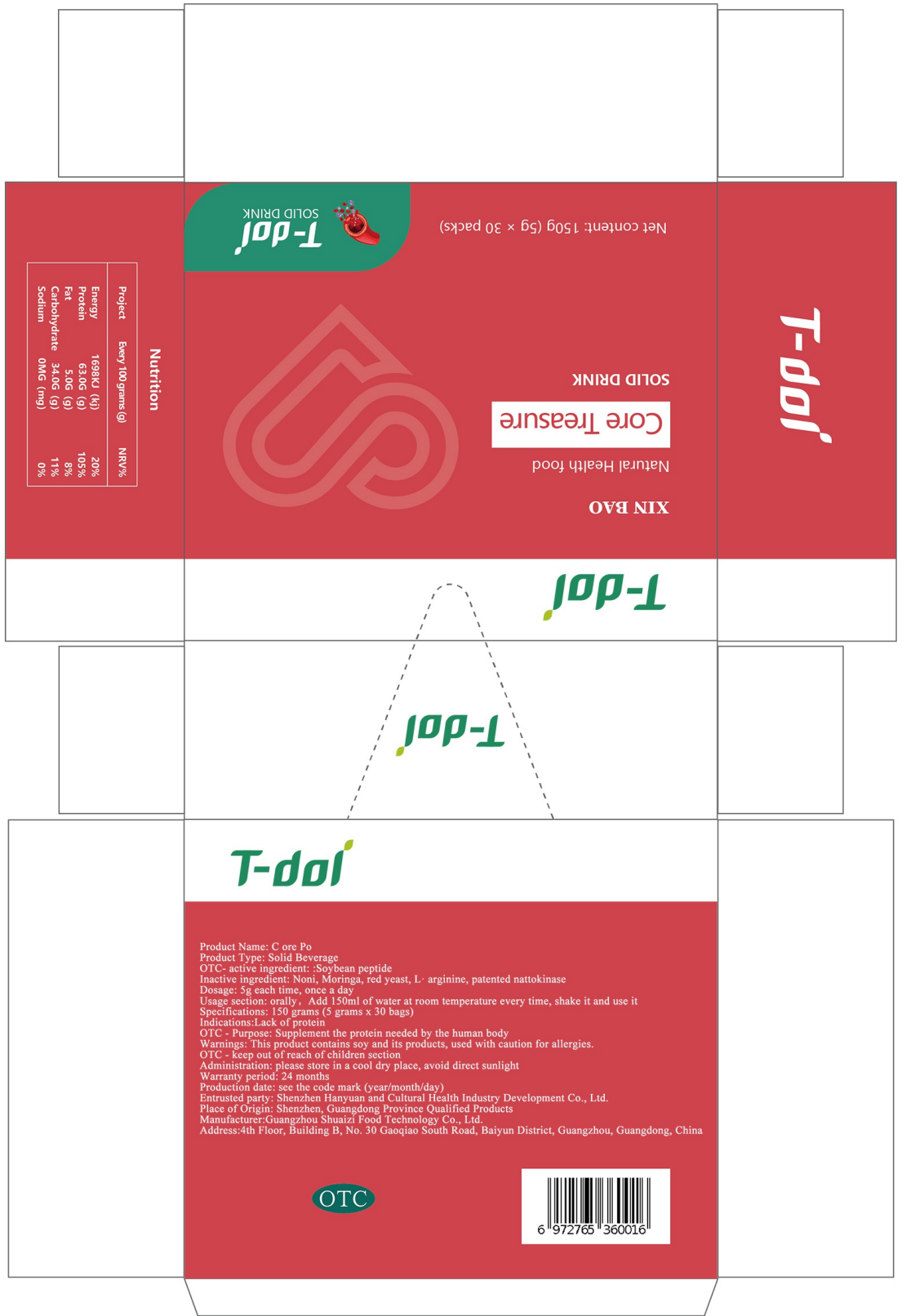
OTC - keep out of reach of children section

OTC - Purpose: Supplement the protein needed by the human body

OTC - active ingredient: :Soybean peptide

Dosage: 5g each time, once a day

Administration: please store in a cool dry place, avoid direct sunlight



46mm

139mm

T-DOL XIN BAO

Nutrition		Project	Every 100grams (g)	NRV%
Energy	1698KJ (kJ)			20%
Protein	63.0G (g)			105%
Fat	5.0G (g)			8%
Carbohydrate	34.0G (g)			11%
Sodium	DMG (mg)			0%

Product Name: Core Treasure
 Product Type: Solid Beverage
 OTC active ingredient: Soybean peptide
 Inactive ingredient: Noni, Moringa, red yeast, L- arginine, patented nattokinase
 Dosage: 5g each time, once a day
 Usage section: orally. Add 150ml of water at room temperature every time, shake it and use it
 Specifications: 150 grams (5 grams x 30 bags)
 Indications: Lack of protein
 OTC - Purpose: Supplement the protein needed by the human body
 Warnings: This product contains soy and its products, used with caution for allergies.
 OTC - keep out of reach of children section
 Administration: please store in a cool dry place, avoid direct sunlight
 Warranty period: 24 months
 Production date: see the code mark (year/month/day)
 Entrusted party: Shenzhen Hanyuan and Cultural Health Industry Development Co., Ltd.
 Place of Origin: Shenzhen, Guangdong Province Qualified Products
 Manufacturer: Guangzhou Shuatzai Food Technology Co., Ltd.
 Address: 4th Floor, Building B, No. 30 Gaoqiao South Road, Baiyun District, Guangzhou, Guangdong, China

OTC



6 972765 360016

solid powder powder

Product Information

Product Type	HUMAN OTC DRUG	Item Code (Source)	NDC:750 18-003
Route of Administration	ORAL		

Active Ingredient/Active Moiety

Ingredient Name	Basis of Strength	Strength
AMINO ACIDS, SO Y (UNII: NWB9514AZM) (AMINO ACIDS, SOY - UNII:NWB9514AZM)	AMINO ACIDS, SOY	2 g in 5 g

Inactive Ingredients

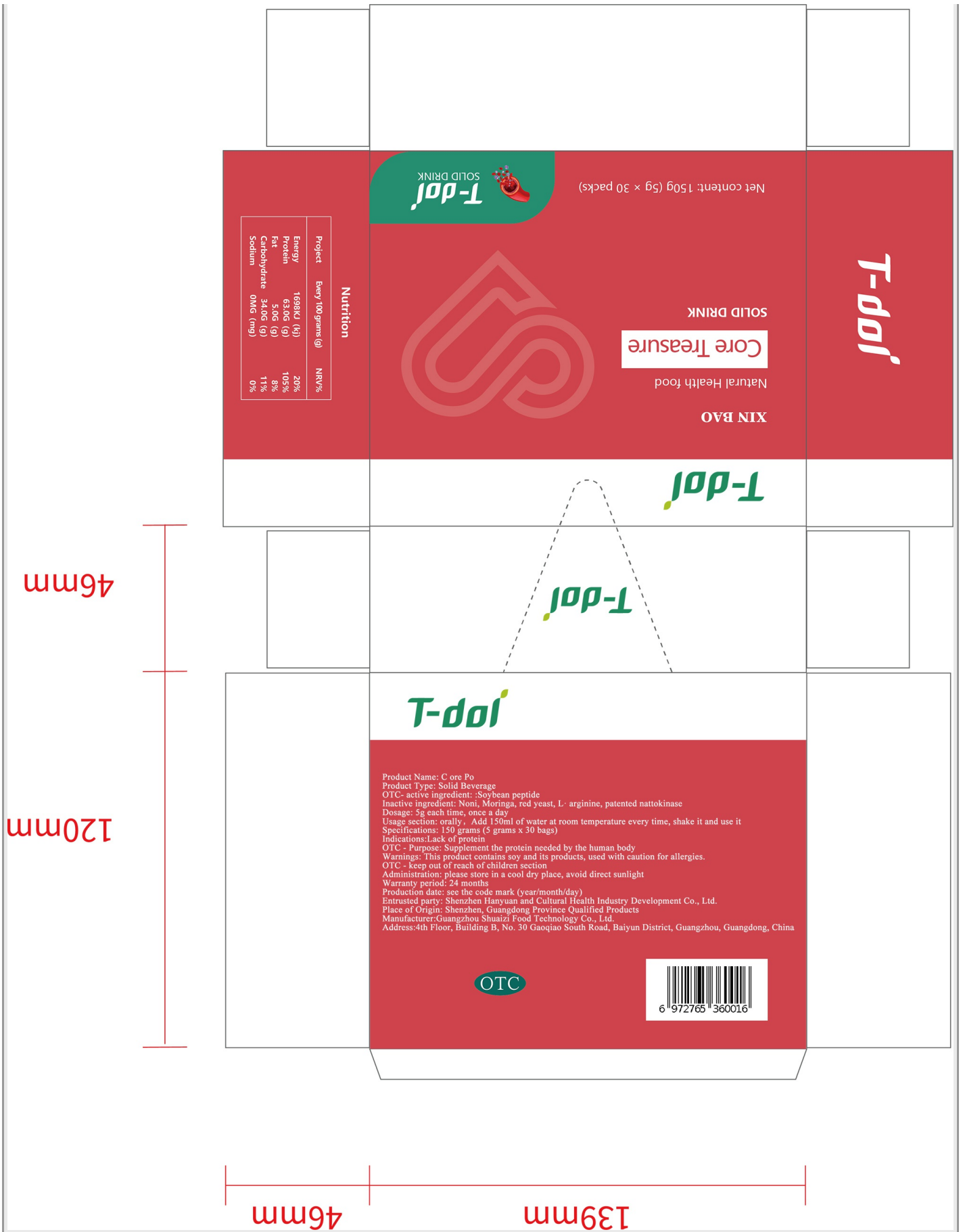
Ingredient Name	Strength
NONI FRUIT (UNII: 7829X3G2X5)	1 g in 5 g
NATTOKINASE (UNII: H81695M5OP)	0.2 g in 5 g
RED YEAST (UNII: 1EU532DCW4)	0.6 g in 5 g
ARGININE (UNII: 94ZLA3W45F)	0.2 g in 5 g
MORINGA OLEIFERA FRUIT (UNII: GRF99ATP84)	1 g in 5 g

Product Characteristics

Color	white	Score	
Shape		Size	
Flavor		Imprint Code	
Contains			

Packaging

#	Item Code	Package Description	Marketing Start Date	Marketing End Date
1	NDC:750 18-003-01	5 g in 1 POUCH; Type 0: Not a Combination Product	10/10/2019	



Nutrition

Project	Energy 100 grams (g)	NRV%
Energy	1699KJ (k)	20%
Protein	62.00G (g)	103%
Fat	3.00G (g)	8%
Carbohydrate	34.00G (g)	11%
Sodium	0MG (mg)	0%



Net content: 150g (5g x 30 packs)

Core Treasure
SOLID DRINK
Natural Health food
XIN BAO

T-doi



T-doi

T-doi

T-doi

Product Name: Core Treasure
 Product Type: Solid Beverage
 OTC-active ingredient: Soybean peptide
 Inactive ingredient: Noni, Moringa, red yeast, L-arginine, patented nattokinase
 Dosage: 5g each time, once a day
 Usage section: orally, Add 150ml of water at room temperature every time, shake it and use it
 Specifications: 150 grams (5 grams x 30 bags)
 Indications: Lack of protein
 OTC - Purpose: Supplement the protein needed by the human body
 Warnings: This product contains soy and its products, used with caution for allergies.
 OTC - keep out of reach of children section
 Administration: please store in a cool dry place, avoid direct sunlight
 Warranty period: 24 months
 Production date: see the code mark (year/month/day)
 Entrusted party: Shenzhen Hanyuan and Cultural Health Industry Development Co., Ltd.
 Place of Origin: Shenzhen, Guangdong Province Qualified Products
 Manufacturer: Guangzhou Shuaitzi Food Technology Co., Ltd.
 Address: 4th Floor, Building B, No. 30 Gaoqiao South Road, Baiyun District, Guangzhou, Guangdong, China

OTC



Marketing Information

Marketing Category	Application Number or Monograph Citation	Marketing Start Date	Marketing End Date
--------------------	--	----------------------	--------------------

unapproved homeopathic

10/10/2019

Labeler - Shenzhen Hanyuanhe Cultural Health Industry Development Co., Ltd. (554508792)

Establishment

Name	Address	ID/FEI	Business Operations
Shenzhen Hanyuanhe Cultural Health Industry Development Co., Ltd.		554508792	label(750 18-003) , manufacture(750 18-003)

Revised: 11/2019

Shenzhen Hanyuanhe Cultural Health Industry Development Co., Ltd.