

FROVATRIPTAN- frovatriptan succinate tablet, film coated

Amneal Pharmaceuticals NY LLC

HIGHLIGHTS OF PRESCRIBING INFORMATION

These highlights do not include all the information needed to use FROVATRIPTAN SUCCINATE TABLETS safely and effectively. See full prescribing information for FROVATRIPTAN SUCCINATE TABLETS.

FROVATRIPTAN succinate tablets, for oral use
Initial U.S. Approval: 2001

INDICATIONS AND USAGE

Frovatriptan succinate is a serotonin (5-HT_{1B/1D}) receptor agonist (triptan) indicated for the acute treatment of migraine with or without aura in adults. (1)

Limitations of Use

- Use only after a clear diagnosis of migraine has been established. (1)
- Not indicated for the prophylactic therapy of migraine. (1)
- Not indicated for the treatment of cluster headache. (1)

DOSAGE AND ADMINISTRATION

- 1 tablet taken with fluids. Second tablet may be taken 2 hours after initial dose if headache recurs following initial relief. Total dose not to exceed 3 tablets in any 24-hour period. (2)

DOSAGE FORMS AND STRENGTHS

Tablets: 2.5 mg (3)

CONTRAINDICATIONS

- History of coronary artery disease or coronary artery vasospasm. (4)
- Wolff-Parkinson-White syndrome or other cardiac accessory conduction pathway disorders. (4)
- History of stroke, transient ischemic attack, or hemiplegic or basilar migraine. (4)
- Peripheral vascular disease (4)
- Ischemic bowel disease (4)
- Uncontrolled hypertension (4)
- Recent (within 24 hours) use of treatment with another 5-HT₁ agonist, or an ergotamine-containing medication. (4)
- Hypersensitivity to frovatriptan succinate (angioedema and anaphylaxis seen). (4)

WARNINGS AND PRECAUTIONS

- Myocardial ischemia/infarction or Prinzmetal's angina: Perform cardiac evaluation in patients with multiple cardiovascular risk factors. (5.1)
- Arrhythmias: Discontinue frovatriptan succinate if occurs. (5.2)
- Chest/throat/neck/jaw pain, tightness, pressure, or heaviness: Generally not associated with myocardial ischemia; evaluate high risk patients for coronary artery disease. (5.3)
- Cerebral hemorrhage, subarachnoid hemorrhage, and stroke: Discontinue frovatriptan succinate if occurs (5.4)
- Gastrointestinal ischemic reactions and peripheral vasospastic reactions: Discontinue frovatriptan succinate if occurs. (5.5)
- Medication overuse headache: Detoxification may be necessary. (5.6)
- Serotonin syndrome: Discontinue frovatriptan succinate if occurs. (5.7, 7.3)

ADVERSE REACTIONS

- Most common adverse reactions ($\geq 2\%$ and $>$ placebo) were dizziness, headache, paresthesia, dry mouth, dyspepsia, fatigue, hot or cold sensation, chest pain, skeletal pain, and flushing. (6.1)

To report SUSPECTED ADVERSE REACTIONS, contact Amneal Pharmaceuticals at 1-877-835-5472 or FDA at 1-800-FDA-1088 or www.fda.gov/medwatch.

USE IN SPECIFIC POPULATIONS

- Pregnancy: Based on animal data, may cause fetal harm. (8.1)

See 17 for PATIENT COUNSELING INFORMATION and FDA-approved patient labeling.

FULL PRESCRIBING INFORMATION: CONTENTS*

1 INDICATIONS AND USAGE

2 DOSAGE AND ADMINISTRATION

3 DOSAGE FORMS AND STRENGTHS

4 CONTRAINDICATIONS

5 WARNINGS AND PRECAUTIONS

5.1 Myocardial Ischemia, Myocardial Infarction, and Prinzmetal's Angina

5.2 Arrhythmias

5.3 Chest, Throat, Neck, and Jaw Pain/Tightness/Pressure

5.4 Cerebrovascular Events

5.5 Other Vasospasm Reactions

5.6 Medication Overuse Headache

5.7 Serotonin Syndrome

5.8 Increase in Blood Pressure

5.9 Hypersensitivity Reactions

6 ADVERSE REACTIONS

6.1 Clinical Trials Experience

6.2 Postmarketing Experience

7 DRUG INTERACTIONS

7.1 Ergot-containing Drugs

7.2 5-HT_{1B/1D} Agonists

7.3 Selective Serotonin Reuptake Inhibitors / Serotonin Norepinephrine Reuptake Inhibitors and Serotonin Syndrome

8 USE IN SPECIFIC POPULATIONS

8.1 Pregnancy

8.2 Lactation

8.4 Pediatric Use

8.5 Geriatric Use

8.6 Patients with Hepatic Impairment

10 OVERDOSAGE

11 DESCRIPTION

12 CLINICAL PHARMACOLOGY

12.1 Mechanism of Action

12.3 Pharmacokinetics

13 NONCLINICAL TOXICOLOGY

13.1 Carcinogenesis, Mutagenesis, Impairment of Fertility

14 CLINICAL STUDIES

16 HOW SUPPLIED/STORAGE AND HANDLING

17 PATIENT COUNSELING INFORMATION

* Sections or subsections omitted from the full prescribing information are not listed.

FULL PRESCRIBING INFORMATION

1 INDICATIONS AND USAGE

Frovatriptan succinate tablets are indicated for the acute treatment of migraine with or without aura in adults.

Limitations of Use

- Use only if a clear diagnosis of migraine has been established. If a patient has no response for the first migraine attack treated with frovatriptan succinate tablets, reconsider the diagnosis of migraine before frovatriptan succinate tablets are administered to treat any subsequent attacks.
- Frovatriptan succinate tablets are not indicated for the prevention of migraine attacks.
- Safety and effectiveness of frovatriptan succinate tablets have not been established for cluster headache.

2 DOSAGE AND ADMINISTRATION

Dosing Information

The recommended dose is a single tablet of frovatriptan succinate (frovatriptan 2.5 mg) taken orally with fluids.

If the migraine recurs after initial relief, a second tablet may be taken, providing there is an interval of at least 2 hours between doses. The total daily dose of frovatriptan succinate tablets should not exceed 3 tablets (3 x 2.5 mg per 24-hour period).

There is no evidence that a second dose of frovatriptan succinate tablets are effective in patients who do not respond to a first dose of the drug for the same headache.

The safety of treating an average of more than 4 migraine attacks in a 30-day period has not been established.

3 DOSAGE FORMS AND STRENGTHS

Frovatriptan succinate tablets, 2.5 mg are supplied as white to off-white, round shaped, biconvex, film-coated tablets, debossed with 'A5' on one side and plain on other side.

4 CONTRAINDICATIONS

Frovatriptan succinate tablets are contraindicated in patients with:

- Ischemic coronary artery disease (CAD) (e.g., angina pectoris, history of myocardial infarction, or documented silent ischemia), or coronary artery vasospasm, including Prinzmetal's angina [see *Warnings and Precautions (5.1)*].
- Wolff-Parkinson-White Syndrome or arrhythmias associated with other cardiac accessory conduction pathway disorders [see *Warnings and Precautions (5.2)*].
- History of stroke, transient ischemic attack (TIA), or history of hemiplegic or basilar migraine because these patients are at a higher risk of stroke [see *Warnings and Precautions (5.4)*].

- Peripheral vascular disease [see *Warnings and Precautions (5.5)*].
- Ischemic bowel disease [see *Warnings and Precautions (5.5)*].
- Uncontrolled hypertension [see *Warnings and Precautions (5.8)*].
- Recent use (i.e. within 24 hours) of another 5-HT₁ agonist, an ergotamine containing or ergot-type medication such as dihydroergotamine (DHE) or methysergide [see *Drug Interactions (7.1, 7.2)*].
- Hypersensitivity to frovatriptan succinate (angioedema and anaphylaxis seen) [see *Warnings and Precautions (5.9)*].

5 WARNINGS AND PRECAUTIONS

5.1 Myocardial Ischemia, Myocardial Infarction, and Prinzmetal's Angina

Frovatriptan succinate is contraindicated in patients with ischemic or vasospastic CAD. There have been rare reports of serious cardiac adverse reactions, including acute myocardial infarction, occurring within a few hours following administration of frovatriptan succinate. Some of these reactions occurred in patients without known CAD. Frovatriptan succinate may cause coronary artery vasospasm (Prinzmetal's angina), even in patients without a history of CAD.

Perform a cardiovascular evaluation in triptan-naïve patients who have multiple cardiovascular risk factors (e.g., increased age, diabetes, hypertension, smoking, obesity, strong family history of CAD) prior to receiving frovatriptan succinate. Do not administer frovatriptan succinate if there is evidence of CAD or coronary artery vasospasm [see *Contraindications (4)*]. For patients with multiple cardiovascular risk factors who have a negative cardiovascular evaluation, consider administering the first frovatriptan succinate dose in a medically-supervised setting and performing an electrocardiogram (ECG) immediately following frovatriptan succinate administration. For such patients, consider periodic cardiovascular evaluation in intermittent long-term users of frovatriptan succinate.

5.2 Arrhythmias

Life-threatening disturbances of cardiac rhythm including ventricular tachycardia and ventricular fibrillation leading to death have been reported within a few hours following the administration of 5-HT₁ agonists. Discontinue frovatriptan succinate if these disturbances occur. Frovatriptan succinate is contraindicated in patients with Wolff-Parkinson-White syndrome or arrhythmias associated with other cardiac accessory conduction pathway disorders [see *Contraindications (4)*].

5.3 Chest, Throat, Neck, and Jaw Pain/Tightness/Pressure

Sensations of pain, tightness, pressure, and heaviness have been reported in the chest, throat, neck, and jaw after treatment with frovatriptan succinate and are usually non-cardiac in origin. However, perform a cardiac evaluation if these patients are at high cardiac risk. The use of frovatriptan succinate is contraindicated in patients with CAD and those with Prinzmetal's angina [see *Contraindications (4)*].

5.4 Cerebrovascular Events

Cerebral hemorrhage, subarachnoid hemorrhage, stroke, and other cerebrovascular

events have been reported in patients treated with 5-HT₁ agonists, and some have resulted in fatalities. In a number of cases, it appears possible that the cerebrovascular events were primary, the agonist having been administered in the incorrect belief that the symptoms experienced were a consequence of migraine, when they were not.

Before treating headaches in patients not previously diagnosed as migraineurs, and in migraineurs who present with symptoms atypical of migraine, other potentially serious neurological conditions need to be excluded. Frovatriptan succinate is contraindicated in patients with a history of stroke or TIA [see *Contraindications (4)*].

5.5 Other Vasospasm Reactions

Frovatriptan succinate may cause non-coronary vasospastic reactions, such as peripheral vascular ischemia, gastrointestinal vascular ischemia and infarction (presenting with abdominal pain and bloody diarrhea), splenic infarction, and Raynaud's syndrome. In patients who experience symptoms or signs suggestive of a vasospastic reaction following the use of any 5-HT₁ agonist, rule out a vasospastic reaction before using frovatriptan succinate [see *Contraindications (4)*].

Reports of transient and permanent blindness and significant partial vision loss have been reported with the use of 5-HT₁ agonists. Since visual disorders may be part of a migraine attack, a causal relationship between these events and the use of 5-HT₁ agonists have not been clearly established.

5.6 Medication Overuse Headache

Overuse of acute migraine drugs (e.g., ergotamine, triptans, opioids, or combination of these drugs for 10 or more days per month) may lead to exacerbation of headache (medication overuse headache). Medication overuse headache may present as migraine-like daily headaches or as a marked increase in frequency of migraine attacks. Detoxification of patients, including withdrawal of the overused drugs, and treatment of withdrawal symptoms (which often includes a transient worsening of headache) may be necessary.

5.7 Serotonin Syndrome

Serotonin syndrome may occur with frovatriptan succinate, particularly during co-administration with selective serotonin reuptake inhibitors (SSRIs), serotonin norepinephrine reuptake inhibitors (SNRIs), tricyclic antidepressants (TCAs), and monoamine oxidase (MAO) inhibitors [see *Drug Interactions (7.3)*]. Serotonin syndrome symptoms may include mental status changes (e.g., agitation, hallucinations, coma), autonomic instability (e.g., tachycardia, labile blood pressure, hyperthermia), neuromuscular aberrations (e.g., hyperreflexia, incoordination), and/or gastrointestinal symptoms (e.g., nausea, vomiting, diarrhea). The onset of symptoms usually occurs within minutes to hours of receiving a new or a greater dose of a serotonergic medication. Discontinue frovatriptan succinate if serotonin syndrome is suspected.

5.8 Increase in Blood Pressure

Significant elevation in blood pressure, including hypertensive crisis with acute impairment of organ systems, has been reported on rare occasions in patients treated with 5-HT₁ agonists, including patients without a history of hypertension. Monitor blood pressure in patients treated with frovatriptan succinate. Frovatriptan succinate is

contraindicated in patients with uncontrolled hypertension [see *Contraindications (4)*].

5.9 Hypersensitivity Reactions

There have been reports of reactions, including anaphylaxis and angioedema, in patients receiving frovatriptan succinate. Such reactions can be life threatening or fatal. In general, anaphylactic reactions to drugs are more likely to occur in individuals with a history of sensitivity to multiple allergens. Frovatriptan succinate tablet is contraindicated in patients with a history of hypersensitivity reaction to frovatriptan succinate [see *Contraindications (4)*].

6 ADVERSE REACTIONS

The following serious adverse reactions are described elsewhere in other sections of the labeling:

- Myocardial Ischemia, Myocardial Infarction, and Prinzmetal's Angina [see *Warnings and Precautions (5.1)*]
- Arrhythmias [see *Warnings and Precautions (5.2)*]
- Chest, Throat, Neck, and/or Jaw Pain/Tightness/Pressure [see *Warnings and Precautions (5.3)*]
- Cerebrovascular Events [see *Warnings and Precautions (5.4)*]
- Other Vasospasm Reactions [see *Warnings and Precautions (5.5)*]
- Medication Overuse Headache [see *Warnings and Precautions (5.6)*]
- Serotonin Syndrome [see *Warnings and Precautions (5.7)*]
- Increases in Blood Pressure [see *Warnings and Precautions (5.8)*]
- Hypersensitivity Reactions [see *Contraindications (4)* and *Warnings and Precautions (5.8)*]

6.1 Clinical Trials Experience

Because clinical trials are conducted under widely varying conditions, adverse reaction rates observed in the clinical trials of a drug cannot be directly compared to rates in the clinical trials of another drug and may not reflect the rates observed in practice.

Frovatriptan succinate was evaluated in four randomized, double-blind, placebo-controlled, short-term trials. These trials involved 2,392 patients (1,554 on frovatriptan 2.5 mg and 838 on placebo). In these short-term trials, patients were predominately female (88%) and Caucasian (94%) with a mean age of 42 years (range 18 to 69). The treatment-emergent adverse events that occurred most frequently following administration of frovatriptan 2.5 mg (i.e. in at least 2% of patients), and at an incidence \geq 1% greater than with placebo, were dizziness, paresthesia, headache, dry mouth, fatigue, flushing, hot or cold sensation, dyspepsia, skeletal pain, and chest pain. In a long-term, open-label study where 496 patients were allowed to treat multiple migraine attacks with frovatriptan 2.5 mg for up to 1 year, 5% of patients (n=26) discontinued due to treatment-emergent adverse events.

Table 1 lists treatment-emergent adverse events reported within 48 hours of drug administration that occurred with frovatriptan 2.5 mg at an incidence of \geq 2% and more often than on placebo, in the four placebo-controlled trials. The events cited reflect experience gained under closely monitored conditions of clinical trials in a highly selected patient population. In actual clinical practice or in other clinical trials, these incidence

estimates may not apply, as the conditions of use, reporting behavior, and the kinds of patients treated may differ.

Table 1: Adverse Reactions Reported within 48 Hours (Incidence \geq 2% and Greater Than Placebo) of Patients in Four Pooled Placebo-Controlled Migraine Trials

Adverse Reactions	Frovatriptan 2.5 mg (n=1,554)	Placebo (n=838)
<i>Central & peripheral nervous system</i>		
Dizziness	8%	5%
Headache	4%	3%
Paresthesia	4%	2%
<i>Gastrointestinal system disorders</i>		
Dry mouth	3%	1%
Dyspepsia	2%	1%
<i>Body as a whole - general disorders</i>		
Fatigue	5%	2%
Hot or cold sensation	3%	2%
Chest pain	2%	1%
<i>Musculo-skeletal</i>		
Skeletal pain	3%	2%
<i>Vascular</i>		
Flushing	4%	2%

The incidence of adverse events in clinical trials did not increase when up to 3 doses were used within 24 hours. The incidence of adverse events in placebo-controlled clinical trials was not affected by gender, age, or concomitant medications commonly used by migraine patients. There were insufficient data to assess the impact of race on the incidence of adverse events.

Other Events Observed in Association with the Administration of frovatriptan succinate

The incidence of frequently reported adverse events in four placebo-controlled trials is presented below. Events are further classified within body system categories. Frequent adverse events are those occurring in at least 1/100 patients.

Central and peripheral nervous system: dysesthesia and hypoesthesia.

Gastrointestinal: vomiting, abdominal pain and diarrhea.

Body as a whole: pain.

Psychiatric: insomnia and anxiety.

Respiratory: sinusitis and rhinitis.

Vision disorders: vision abnormal.

Skin and appendages: sweating increased.

Hearing and vestibular disorders: tinnitus.

Heart rate and rhythm: palpitation.

6.2 Postmarketing Experience

The following adverse reactions were identified during post approval use of frovatriptan succinate. Because these events are reported voluntarily from a population of uncertain size, it is not always possible to reliably estimate their frequency or establish a causal relationship to drug exposure.

Central and peripheral nervous system: Seizure.

7 DRUG INTERACTIONS

7.1 Ergot-containing Drugs

Ergot-containing drugs have been reported to cause prolonged vasospastic reactions. Because these effects may be additive, use of ergotamine-containing or ergot-type medications (like dihydroergotamine or methysergide) and frovatriptan succinate within 24 hours of each other is contraindicated [see *Contraindications (4)*].

7.2 5-HT_{1B/1D} Agonists

Because their vasospastic effects may be additive, co-administration of frovatriptan succinate and other 5-HT₁ agonists (e.g., triptans) within 24 hours of each other is contraindicated [see *Contraindications (4)*].

7.3 Selective Serotonin Reuptake Inhibitors / Serotonin Norepinephrine Reuptake Inhibitors and Serotonin Syndrome

Cases of serotonin syndrome have been reported during combined use of triptans and SSRIs, SNRIs, TCAs, and MAO inhibitors [see *Warnings and Precautions (5.7)*].

8 USE IN SPECIFIC POPULATIONS

8.1 Pregnancy

Risk Summary

There are no adequate data on the developmental risk associated with the use of frovatriptan succinate in pregnant women. In animal studies, frovatriptan produced developmental toxicity (embryofetal lethality, fetal abnormalities, and decreased embryofetal growth) when administered to pregnant rats and rabbits at doses greater than those used clinically [see *Animal Data*].

In the U.S. general population, the estimated background risk of major birth defects and of miscarriage in clinically recognized pregnancies is 2% to 4% and 15% to 20%, respectively. The reported rate of major birth defects among deliveries to women with migraine ranged from 2.2% to 2.9% and the reported rate of miscarriage was 17%, which were similar to rates reported in women without migraine.

Clinical Considerations

Disease-Associated Maternal and/or Embryo/Fetal Risk

Published data have suggested that women with migraines may be at increased risk of preeclampsia during pregnancy.

Data

Animal Data

When pregnant rats were administered frovatriptan (oral doses of 0, 100, 500, or 1,000 mg/kg/day) throughout organogenesis, increased embryofetal mortality and an increased incidence of fetal malformations were observed at the high dose; decreased fetal body weights and increased incidences of fetal structural variations associated with growth impairment were observed at all doses. The lowest effect dose for embryofetal developmental toxicity in rats (100 mg/kg/day) is approximately 130 times the maximum recommended human dose (MRHD) of 7.5 mg/day on a body surface area (mg/m²) basis.

When pregnant rabbits were administered frovatriptan (oral doses of 0, 5, 20, or 80 mg/kg/day) throughout organogenesis, embryofetal mortality was increased at the mid and high doses. The no-effect dose for embryofetal developmental toxicity in rabbits (5 mg/kg/day) is approximately 13 times the MRHD on a mg/m² basis.

Oral administration of frovatriptan (0, 100, 500, or 1000 mg/kg/day) to female rats throughout pregnancy and lactation resulted in increased embryofetal mortality at the high dose. The no effect dose for pre- and postnatal developmental toxicity in rats (500 mg/kg/day) is approximately 650 times the MRHD on a mg/m² basis.

8.2 Lactation

Risk Summary

There are no data on the presence of frovatriptan in human milk, the effects of frovatriptan on the breastfed infant, or the effects of frovatriptan on milk production. In rats, oral dosing with frovatriptan resulted in levels of frovatriptan and/or its metabolites in milk up to four times higher than in plasma.

The developmental and health benefits of breastfeeding should be considered along with the mother's clinical need for frovatriptan succinate and any potential adverse effects on the breastfed infant from frovatriptan or from the underlying maternal condition.

8.4 Pediatric Use

The safety and effectiveness in pediatric patients have not been established. Therefore, frovatriptan succinate is not recommended for use in patients under 18 years of age. There are no additional adverse reactions identified in pediatric patients based on postmarketing experience that were not previously identified in adults.

8.5 Geriatric Use

Mean blood concentrations of frovatriptan in elderly patients were 1.5 to 2 times higher than those seen in younger adults [see *Clinical Pharmacology (12.3)*]. No dosage adjustment is necessary.

8.6 Patients with Hepatic Impairment

No dosage adjustment is necessary when frovatriptan succinate is given to patients with

mild to moderate hepatic impairment.

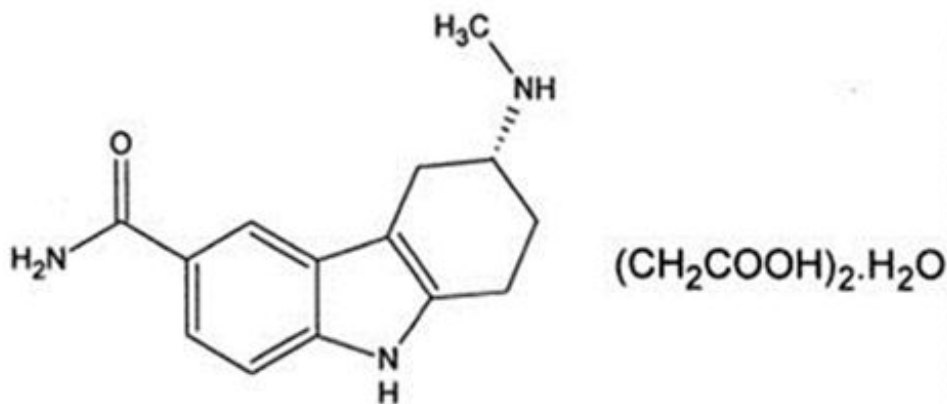
There is no clinical or pharmacokinetic experience with frovatriptan succinate in patients with severe hepatic impairment. Because a greater than two-fold increase in AUC is predicted in patients with severe hepatic impairment, there is a greater potential for adverse events in these patients, and frovatriptan succinate should therefore be used with caution in that population.

10 OVERDOSAGE

The elimination half-life of frovatriptan is 26 hours [see *Clinical Pharmacology (12.3)*]. Therefore, monitoring of patients after overdose with frovatriptan should continue for at least 48 hours or while symptoms or signs persist. There is no specific antidote to frovatriptan. It is unknown what effect hemodialysis or peritoneal dialysis has on the serum concentrations of frovatriptan.

11 DESCRIPTION

Frovatriptan succinate tablets contain frovatriptan succinate, a selective 5-hydroxytryptamine₁ (5-HT_{1B/1D}) receptor subtype agonist (triptan), as the active ingredient. Frovatriptan succinate is chemically designated as R-(+) 3-methylamino-6-carboxamido-1,2,3,4-tetrahydrocarbazole monosuccinate monohydrate and it has the following structure:



The molecular formula is $\text{C}_{18}\text{H}_{23}\text{N}_3\text{O}_5 \cdot \text{H}_2\text{O}$, representing a molecular weight of 379.4 g/mol.

Frovatriptan succinate is a white to off-white powder that is soluble in water.

Each frovatriptan succinate tablet for oral administration contains 3.91 mg frovatriptan succinate, equivalent to 2.5 mg of frovatriptan base. Each tablet also contains following inactive ingredients: anhydrous lactose, hypromellose, lactose monohydrate, polyethylene glycol, magnesium stearate, microcrystalline cellulose, silicon dioxide, sodium starch glycolate, titanium dioxide and triacetin.

12 CLINICAL PHARMACOLOGY

12.1 Mechanism of Action

Frovatriptan binds with high affinity to 5-HT_{1B/1D} receptors. The therapeutic activity of frovatriptan succinate is thought to be due to the agonist effects at the 5-HT_{1B/1D} receptors on intracranial blood vessels (including the arterio-venous anastomoses) and sensory nerves of the trigeminal system which result in cranial vessel constriction and inhibition of pro-inflammatory neuropeptide release.

12.3 Pharmacokinetics

The pharmacokinetics of frovatriptan are similar in migraine patients and healthy subjects.

Absorption

Mean maximum blood concentrations (C_{max}) in patients are achieved approximately 2 to 4 hours after administration of a single oral dose of frovatriptan 2.5 mg. The absolute bioavailability of an oral dose of frovatriptan 2.5 mg in healthy subjects is about 20% in males and 30% in females. Food has no significant effect on the bioavailability of frovatriptan, but delays t_{max} by one hour.

Distribution

Binding of frovatriptan to serum proteins is low (approximately 15%). Reversible binding to blood cells at equilibrium is approximately 60%, resulting in a blood: plasma ratio of about 2:1 in both males and females. The mean steady-state volume of distribution of frovatriptan following intravenous administration of 0.8 mg is 4.2 L/kg in males and 3.0 L/kg in females.

Metabolism

In vitro, cytochrome P450 1A2 appears to be the principal enzyme involved in the metabolism of frovatriptan. Following administration of a single oral dose of radiolabeled frovatriptan 2.5 mg to healthy male and female subjects, 32% of the dose was recovered in urine and 62% in feces. Radiolabeled compounds excreted in urine were unchanged frovatriptan, hydroxylated frovatriptan, N-acetyl desmethyl frovatriptan, hydroxylated N-acetyl desmethyl frovatriptan and desmethyl frovatriptan, together with several other minor metabolites. Desmethyl frovatriptan has lower affinity for 5-HT_{1B/1D} receptors compared to the parent compound. The N-acetyl desmethyl metabolite has no significant affinity for 5-HT receptors. The activity of the other metabolites is unknown.

Elimination

After an intravenous dose, mean clearance of frovatriptan was 220 and 130 mL/min in males and females, respectively. Renal clearance accounted for about 40% (82 mL/min) and 45% (60 mL/min) of total clearance in males and females, respectively. The mean terminal elimination half-life of frovatriptan in both males and females is approximately 26 hours.

Special Populations

Hepatic Impairment

The AUC of frovatriptan in patients with mild (Child-Pugh 5 to 6) to moderate (Child-Pugh 7 to 9) hepatic impairment was about twice that of young, healthy subjects, but within

the range observed in healthy elderly subjects and was considerably lower than the values attained with higher doses of frovatriptan (up to 40 mg), which were not associated with any serious adverse effects. There is no clinical or pharmacokinetic experience with frovatriptan succinate in patients with severe hepatic impairment.

Renal Impairment

The pharmacokinetics of frovatriptan following a single oral dose of 2.5 mg was not different in patients with renal impairment (5 males and 6 females, creatinine clearance 16 to 73 mL/min) compared to subjects with normal renal function.

Age

Mean AUC of frovatriptan was 1.5- to 2-fold higher in healthy elderly subjects (age 65 to 77 years) compared to those in healthy younger subjects (age 21 to 37 years). There was no difference in t_{\max} or $t_{1/2}$ between the two populations.

Sex

There was no difference in the mean terminal elimination half-life of frovatriptan in males and females. Bioavailability was higher, and systemic exposure to frovatriptan was approximately 2-fold greater, in females than males, irrespective of age.

Race

The effect of race on the pharmacokinetics of frovatriptan has not been examined.

Drug Interaction Studies

Frovatriptan is not an inhibitor of human monoamine oxidase (MAO) enzymes or cytochrome P450 (isozymes 1A2, 2C9, 2C19, 2D6, 2E1, 3A4) *in vitro* at concentrations up to 250- to 500-fold higher than the highest blood concentrations observed in man at a dose of 2.5 mg. No induction of drug metabolizing enzymes was observed following multiple dosing of frovatriptan to rats or on addition to human hepatocytes *in vitro*. Although no clinical trials have been performed, it is unlikely that frovatriptan will affect the metabolism of co-administered drugs metabolized by these mechanisms.

Oral Contraceptives

Retrospective analysis of pharmacokinetic data from females across trials indicated that the mean C_{\max} and AUC of frovatriptan are 30% higher in those subjects taking oral contraceptives compared to those not taking oral contraceptives.

Ergotamine

The AUC and C_{\max} of frovatriptan (2 x 2.5 mg dose) were reduced by approximately 25% when co-administered with ergotamine tartrate [see *Contraindications (4)*, *Drug Interactions (7.1)*].

Propranolol

Propranolol increased the AUC of frovatriptan 2.5 mg in males by 60% and in females by 29%. The C_{\max} of frovatriptan was increased 23% in males and 16% in females in the presence of propranolol. The t_{\max} as well as half-life of frovatriptan, though slightly longer in the females, were not affected by concomitant administration of propranolol.

Moclobemide

The pharmacokinetic profile of frovatriptan was unaffected when a single oral dose of

frovatriptan 2.5 mg was administered to healthy female subjects receiving the MAO-A inhibitor, moclobemide, at an oral dose of 150 mg twice a day for 8 days.

13 NONCLINICAL TOXICOLOGY

13.1 Carcinogenesis, Mutagenesis, Impairment of Fertility

Carcinogenesis

The carcinogenic potential of orally administered frovatriptan was evaluated in an 84-week study in mice (4, 13, and 40 mg/kg/day), a 104-week study in rats (8.5, 27, and 85 mg/kg/day), and a 26-week study in p53(+/-) transgenic mice (20, 62.5, 200, and 400 mg/kg/day). Although a maximum tolerated dose was not achieved in the 84-week mouse study and in female rats, plasma exposures at the highest doses studied were higher than that achieved in humans at the MRHD of 7.5 mg/day. There were no increases in tumor incidence in the 84-week mouse study at doses producing plasma exposures (AUC) 140 times that in humans at the MRHD. In the rat study, there was a statistically significant increase in the incidence of pituitary adenomas in males only at 85 mg/kg/day, a dose associated with a plasma AUC 250 times that in humans at the MRHD. In the 26-week p53(+/-) transgenic mouse study, the incidence of subcutaneous sarcomas was increased in females at doses of 200 and 400 mg/kg/day.

These sarcomas were associated with subcutaneously implanted animal identification transponders, and are not considered to be relevant to humans. There were no other increases in tumor incidence of any type in any dose group.

Mutagenesis

Frovatriptan was clastogenic in human lymphocyte cultures, in the absence of metabolic activation. In the bacterial reverse mutation assay (Ames test), frovatriptan produced an equivocal response in the absence of metabolic activation. Frovatriptan was negative in an *in vitro* mouse lymphoma *tk* assay and an *in vivo* mouse bone marrow micronucleus test.

Impairment of Fertility

Male and female rats were dosed orally with frovatriptan prior to and during mating and in females up to implantation, at doses of 100, 500, and 1,000 mg/kg/day (equivalent to approximately 130, 650, and 1,300 times the MRHD on a mg/m² basis). At all dose levels, there was an increase in the number of females that mated on the first day of pairing compared to control animals. This occurred in conjunction with a prolongation of the estrous cycle. In addition, females had a decreased mean number of corpora lutea, and consequently a lower number of live fetuses per litter, which suggested a partial impairment of ovulation. There were no other fertility-related effects.

14 CLINICAL STUDIES

The efficacy of frovatriptan succinate in the acute treatment of migraine headaches was demonstrated in four randomized, double-blind, placebo-controlled, short-term outpatient trials. In these trials, patients received doses of frovatriptan from 0.5 mg to 40 mg. In these controlled short-term trials, patients were predominately female (88%) and Caucasian (94%) with a mean age of 42 years (range 18 to 69). Patients were

instructed to treat a moderate to severe headache. Headache response, defined as a reduction in headache severity from moderate or severe pain to mild or no pain, was assessed for up to 24 hours after dosing. The associated symptoms nausea, vomiting, photophobia, and phonophobia were also assessed. Maintenance of response was assessed for up to 24 hours post dose. In two of the trials a second dose of frovatriptan succinate was provided after the initial treatment, to treat recurrence of the headache within 24 hours. Other medication, excluding other 5-HT₁ agonists and ergotamine containing compounds, was permitted from 2 hours after the first dose of frovatriptan succinate. The frequency and time to use of additional medications were also recorded.

In all four placebo-controlled trials, the percentage of patients achieving a headache response 2 hours after treatment was significantly greater for those taking frovatriptan 2.5 mg compared to those taking placebo (Table 2).

Lower doses of frovatriptan (1 mg or 0.5 mg) were not effective at 2 hours. Higher doses (5 mg to 40 mg) of frovatriptan showed no added benefit over 2.5 mg but did cause a greater incidence of adverse events.

Table 2: Percentage of Patients with Headache Response (Mild or No Headache) 2 Hours Following Treatment^a

Study	Frovatriptan 2.5 mg	Placebo
1	42%* (n=90)	22% (n=91)
2	39%* (n=187)	21% (n=99)
3	46%** (n=672)	27% (n=347)
4	37%** (n=438)	23% (n=225)
a ITT observed data, excludes patients who had missing data or were asleep. * $p < 0.05$. ** $p < 0.001$ in comparison with placebo.		

The estimated probability of achieving an initial headache response by 2 hours following treatment is depicted in Figure 1.

Figure 1: Estimated Probability of Achieving Initial Headache Response Within 2 Hours

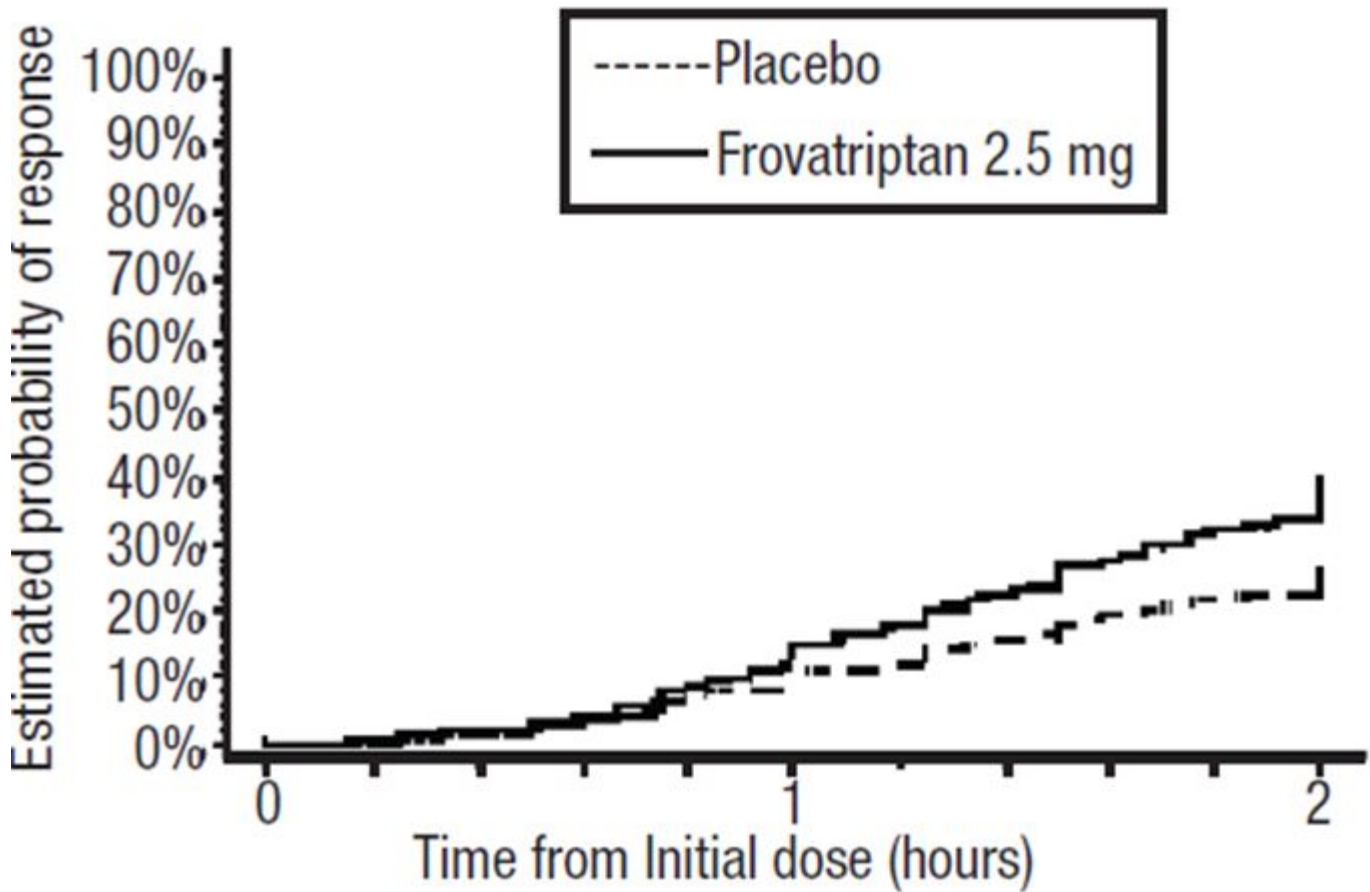


Figure 1 shows a Kaplan-Meier plot of the probability over time of obtaining headache response (no or mild pain) following treatment with frovatriptan 2.5 mg or placebo. The probabilities displayed are based on pooled data from the four placebo-controlled trials described in Table 2. Patients who did not achieve a response were censored at 24 hours.

In patients with migraine-associated nausea, photophobia, and phonophobia at baseline there was a decreased incidence of these symptoms in frovatriptan succinate treated patients compared to placebo.

The estimated probability of patients taking a second dose or other medication for their migraine over the 24 hours following the initial dose of study treatment is summarized in Figure 2.

Figure 2: Estimated Probability of Patients Taking a Second Dose or Other Medication for Migraine Over the 24 Hours Following the Initial Dose of Study Treatment

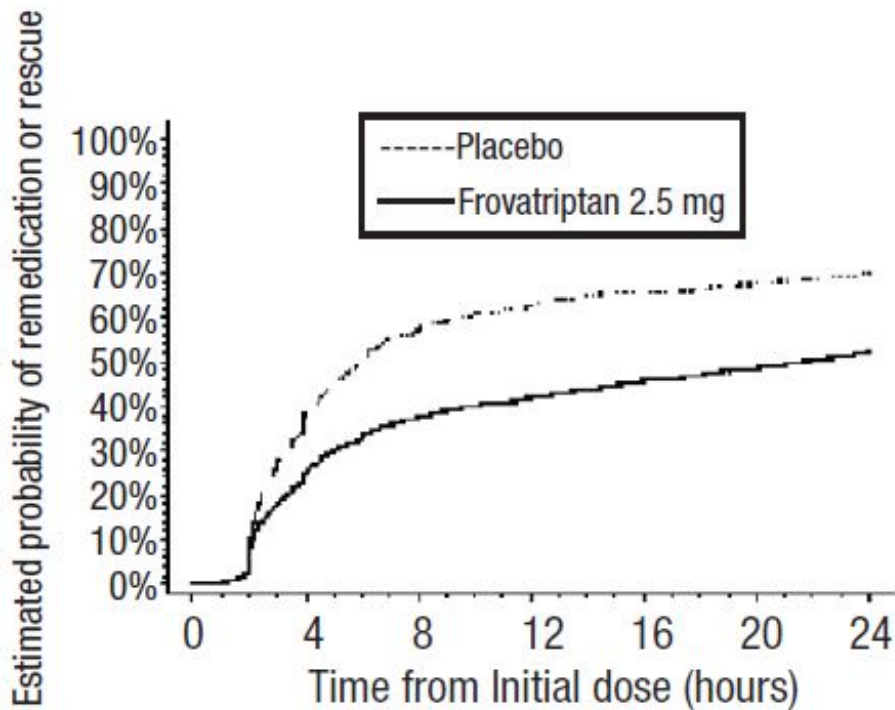


Figure 2 is a Kaplan-Meier plot showing the probability of patients taking a second dose or other medication for migraine over the 24 hours following the initial dose of study medication based on the data from the four placebo-controlled trials described in Table 2. The plot includes those patients who had a response to the initial dose and those who did not. The protocols did not permit remedication within 2 hours of the initial dose.

Efficacy was unaffected by a history of aura; gender; age, or concomitant medications commonly used by migraine patients.

16 HOW SUPPLIED/STORAGE AND HANDLING

Frovatriptan Succinate Tablets, **2.5 mg** are supplied as white to off-white, round shaped, biconvex, film-coated tablets, debossed with 'A5' on one side and plain on other side.

They are available as follows:

Carton of 9 Tablets: NDC 69238-1539-9

(Packages of 9 unit doses, 1 card of 9 tablets each)

Store at 20° to 25°C (68° to 77°F); excursions permitted between 15° to 30°C (59° to 86°F) [see USP Controlled Room Temperature].

Protect from moisture.

17 PATIENT COUNSELING INFORMATION

Advise the patient to read the FDA-approved patient labeling (Patient Information).

Myocardial Ischemia and/or Infarction, Prinzmetal's Angina, Other Vasospastic

Reactions, and Cerebrovascular Events

Inform patients that frovatriptan succinate may cause serious cardiovascular adverse reactions such as myocardial infarction or stroke, which may result in hospitalization and even death. Although serious cardiovascular reactions can occur without warning symptoms, instruct patients to be alert for the signs and symptoms of chest pain, shortness of breath, weakness, slurring of speech, and instruct them to ask for medical advice when observing any indicative sign or symptoms. Instruct patients to seek medical advice if they have symptoms of other vasospastic reactions [see *Warnings and Precautions (5.1, 5.2, 5.4, 5.5, and 5.8)*].

Hypersensitivity Reactions

Inform patients that anaphylactic reactions have occurred in patients receiving frovatriptan succinate. Inform patients that such reactions can be life threatening or fatal and to seek immediate medical attention if they have anaphylactic symptoms. In general, anaphylactic reactions to drugs are more likely to occur in individuals with a history of sensitivity to multiple allergens [see *Contraindications (4)*].

Medication Overuse Headache

Inform patients that use of drugs to treat acute migraines for 10 or more days per month may lead to an exacerbation of headache, and encourage patients to record headache frequency and drug use (e.g., by keeping a headache diary) [see *Warnings and Precautions (5.6)*].

Serotonin Syndrome

Inform patients about the risk of serotonin syndrome with the use of frovatriptan succinate or other triptans, particularly during combined use with SSRIs, SNRIs, TCAs, and MAO inhibitors [see *Warnings and Precautions (5.7)* and *Drug Interactions (7.3)*].

Pregnancy

Advise patients to notify their healthcare provider if they become pregnant during treatment or plan to become pregnant [see *Use in Specific Populations (8.1)*].

Lactation

Inform patients to notify their healthcare provider if they are breastfeeding or plan to breastfeed [see *Use in Specific Populations (8.2)*].

Manufactured by:

Amneal Pharmaceuticals Pvt. Ltd.

Oral Solid Dosage Unit

Ahmedabad 382213, INDIA

Packed by:

Amneal Pharmaceuticals Pvt. Ltd.

Ahmedabad 382220, INDIA

Distributed by:

Amneal Pharmaceuticals LLC

Bridgewater, NJ 08807

Patient Information

Frovatriptan Succinate (froeh" va trip' tan sux' i nate) Tablets

What is the most important information I should know about frovatriptan succinate tablets?

Frovatriptan succinate tablets can cause serious side effects, including:

- **Heart attack and other heart problems.** Heart problems may lead to death. Stop taking frovatriptan succinate tablets and get emergency medical help right away if you have any of the following symptoms of a heart attack:
 - discomfort in the center of your chest that lasts for more than a few minutes, or that goes away and comes back
 - severe tightness, pain, pressure, or heaviness in your chest, throat, neck, or jaw
 - pain or discomfort in your arms, back, neck, jaw, or stomach
 - shortness of breath with or without chest discomfort
 - breaking out in a cold sweat
 - nausea or vomiting
 - feeling lightheaded

Frovatriptan succinate tablets are not for people with risk factors for heart disease unless a heart exam is done and shows no problem. You have a higher risk for heart disease if you:

-
- | | |
|----------------------------|--|
| • have high blood pressure | • have high cholesterol levels |
| • smoke | • are overweight |
| • have diabetes | • have a family history of heart disease |
-

What are frovatriptan succinate tablets?

Frovatriptan succinate tablets are a prescription medicine used to treat migraine headaches with or without aura in adults.

Frovatriptan succinate tablets are not used to treat other types of headaches.

Frovatriptan succinate tablets are not used to prevent or decrease the number of migraine headaches.

It is not known if frovatriptan succinate tablets are safe and effective to treat cluster headaches.

It is not known if frovatriptan succinate tablets are safe and effective in children under 18 years of age.

Who should not take frovatriptan succinate tablets?

Do not take frovatriptan succinate tablets if you have:

- heart problems, a history of heart problems, or problems with the electrical system of your heart.
- had a stroke, transient ischemic attacks (TIAs), or problems with your blood circulation.
- had hemiplegic migraines or basilar migraines. If you are not sure if you have had

these types of migraines, ask your healthcare provider.

- narrowing of blood vessels to your legs, arms, or stomach (peripheral vascular disease).
- injury to your bowel (intestine) due to poor blood circulation (ischemic bowel disease).
- uncontrolled high blood pressure.
- taken any of the following medicines in the last 24 hours:
 - almotriptan (AXERT[®])
 - eletriptan (RELPAX[®])
 - naratriptan (AMERGE[®])
 - rizatriptan (MAXALT[®], MAXALT-MLT[®])
 - sumatriptan (IMITREX[®], IMITREX STATDOSE, ONZETRA[™] XSAIL[™], ZEMBRACE[™] SYMTOUCH[™])
 - sumatriptan and naproxen (TREXIMET[®])
 - zolmitriptan (ZOMIG[®], ZOMIG-ZMT)
 - ergotamine or ergotamine-type medicines (CAFERGOT[®], ERGOMAR[®], D.H.E.45[®], MIGRANAL[®], MIGERGOT)

Ask your healthcare provider if you are not sure if your medicine is listed above.

- an allergy to frovatriptan or any of the ingredients in frovatriptan succinate tablets. See the end of this leaflet for a complete list of ingredients in frovatriptan succinate tablets.

What should I tell my doctor before taking frovatriptan succinate tablets?

Before taking frovatriptan succinate tablets, tell your doctor about all of your medical conditions, including if you:

- have high blood pressure.
- have high cholesterol.
- have diabetes.
- have liver problems.
- smoke.
- are overweight.
- have heart disease or a family history of heart disease or stroke.
- have any allergies.
- are pregnant or plan to become pregnant. It is not known if frovatriptan succinate tablets can harm your unborn baby.
- are breastfeeding or plan to breastfeed. It is not known if frovatriptan succinate passes into your breast milk. Talk to your doctor about the best way to feed your baby if you take frovatriptan succinate tablets.

Tell your doctor about all the medicines you take, including prescription and over-the-counter medicines, vitamins, and herbal supplements.

Frovatriptan succinate tablets and certain other medicines can affect each other, causing serious side effects.

Especially tell your doctor if you take:

- ergotamine or triptan medicine
- opioid pain medicine
- antidepressant medicines called:
 - selective serotonin reuptake inhibitors (SSRIs)
 - serotonin norepinephrine reuptake inhibitors (SNRIs)
 - tricyclic antidepressants (TCAs)
 - monoamine oxidase inhibitors (MAOIs)

Ask your doctor or pharmacist for a list of these medicines if you are not sure.

Know the medicines you take. Keep a list of them to show your doctor or pharmacist when you get a new medicine.

How should I take frovatriptan succinate tablets?

- Certain people should take their first dose of frovatriptan succinate tablet in their doctor’s office or in another medical setting. Ask your doctor if you should take your first dose in a medical setting.
- Take frovatriptan succinate tablets exactly as your doctor tells you.
- Take frovatriptan succinate tablets by mouth with fluids.
- If you do not get any relief from your headache after your first frovatriptan succinate tablet, do not take a second tablet without first talking with your doctor.
- If your headache comes back or you only get some relief from your headache, you may take a second frovatriptan succinate tablet if it has been at least 2 hours after the first tablet.
- Do not take more than 3 frovatriptan succinate tablets in a 24-hour period.
- It is not known if it is safe to take frovatriptan succinate tablets for more than 4 headaches in 30 days.
- If you take too much frovatriptan succinate tablets, call your doctor or go to the nearest hospital emergency room right away.
- You should write down when you have headaches and when you take frovatriptan succinate tablets so you can talk with your doctor about how frovatriptan succinate tablets are working for you.

What should I avoid while taking frovatriptan succinate tablets?

Frovatriptan succinate tablets can cause dizziness, weakness, or drowsiness. If you have these symptoms do not drive a car, use machinery, or do anything where you need to be alert.

What are the possible side effects of frovatriptan succinate tablets?

Frovatriptan succinate tablets can cause serious side effects.

See **“What is the most important information I should know about frovatriptan succinate tablets?”**

- **Stroke.** Stop taking frovatriptan succinate tablets and get emergency medical help right away if you have any of the following symptoms of a stroke:

-
- face drooping
 - slurred speech
 - unusual weakness or numbness

-
- **Changes in color or sensation in your fingers and toes (Raynaud's syndrome).**
 - **Stomach and intestinal problems** (gastrointestinal and colonic ischemic events). Symptoms of gastrointestinal and colonic ischemic events include:

-
- sudden or severe stomach pain
 - stomach pain after meals
 - weight loss
 - nausea or vomiting
 - constipation or diarrhea
 - bloody diarrhea
 - fever

-
- **Problems with blood circulation to your legs and feet** (peripheral vascular ischemia). Symptoms of peripheral vascular ischemia include:

-
- cramping and pain in your legs or hips
 - feeling of heaviness or tightness in your leg muscles
 - burning or aching pain in your feet or toes while resting
 - numbness, tingling, or weakness in your legs
 - cold feeling or color changes in one or both legs or feet

-
- **Medication overuse headache.** Some people who use too many frovatriptan succinate tablets may have worse headaches (medication overuse headache). If your headaches get worse, your doctor may decide to stop your treatment with frovatriptan succinate tablets.

- **Serotonin syndrome.** Serotonin syndrome is a rare but serious problem that can happen in people using frovatriptan succinate tablets, especially if frovatriptan succinate tablets are used with anti-depressant medicines called SSRIs, SNRIs, TCAs, and MAOIs. Call your doctor right away if you have any of the following symptoms of serotonin syndrome:

-
- mental changes such as seeing things that are not there (hallucinations), agitation, or coma
 - fast heartbeat
 - changes in blood pressure
 - high body temperature
 - tight muscles
 - trouble walking

-
- **Increased blood pressure.**

- **Allergic reactions.** Call your doctor or get emergency medical help right away if you have symptoms of an allergic reaction, including:

- rash

- rash
 - hives
 - itching
 - swelling of the face, mouth, throat, or tongue
 - difficulty breathing
-

The most common side effects of frovatriptan succinate tablets are:

-
- dizziness
 - fatigue (tiredness, drowsiness)
 - headache (other than a migraine headache)
 - tingling or numbness in your fingers or toes
 - warm, hot, burning feeling of your face (flushing)
 - dry mouth
 - feeling hot or cold
 - pain in joints or bones
 - chest pain
 - indigestion
-

These are not all the possible side effects of frovatriptan succinate tablets. For more information, ask your doctor or pharmacist.

Call your doctor for medical advice about side effects. You may report side effects to FDA at 1-800-FDA-1088.

How should I store frovatriptan succinate tablets?

- Store frovatriptan succinate tablets at 20° to 25°C (68° to 77°F); excursions permitted between 15° to 30°C (59° to 86°F).
- Protect frovatriptan succinate tablets from moisture.
- Throw away (discard) after expiration date printed on the carton.

Keep frovatriptan succinate tablets and all medicines out of the reach of children.

General information about the safe and effective use of frovatriptan succinate tablets.

Medicines are sometimes prescribed for purposes other than those listed in a Patient Information leaflet. Do not use frovatriptan succinate tablets for a condition for which it was not prescribed. Do not give frovatriptan succinate tablets to other people, even if they have the same symptoms that you have. It may harm them.

You can ask your doctor or pharmacist for information about frovatriptan succinate tablets that is written for health professionals.

What are the Ingredients in frovatriptan succinate tablets?

Active Ingredient: frovatriptan succinate

Inactive Ingredients: anhydrous lactose, hypromellose, lactose monohydrate, polyethylene glycol, magnesium stearate, microcrystalline cellulose, silicon dioxide, sodium starch glycolate, titanium dioxide and triacetin.

For more information, go to www.amneal.com or call 1-877-835-5472.

All trademarks are the property of their respective owners.

This Patient Information has been approved by the U.S. Food and Drug Administration.

Manufactured by:

Amneal Pharmaceuticals Pvt. Ltd.
Oral Solid Dosage Unit
Ahmedabad 382213, INDIA

Packed by:

Amneal Pharmaceuticals Pvt. Ltd.
Ahmedabad 382220, INDIA

Distributed by:

Amneal Pharmaceuticals LLC
Bridgewater, NJ 08807

Rev. 09-2019-02

PRINCIPAL DISPLAY PANEL

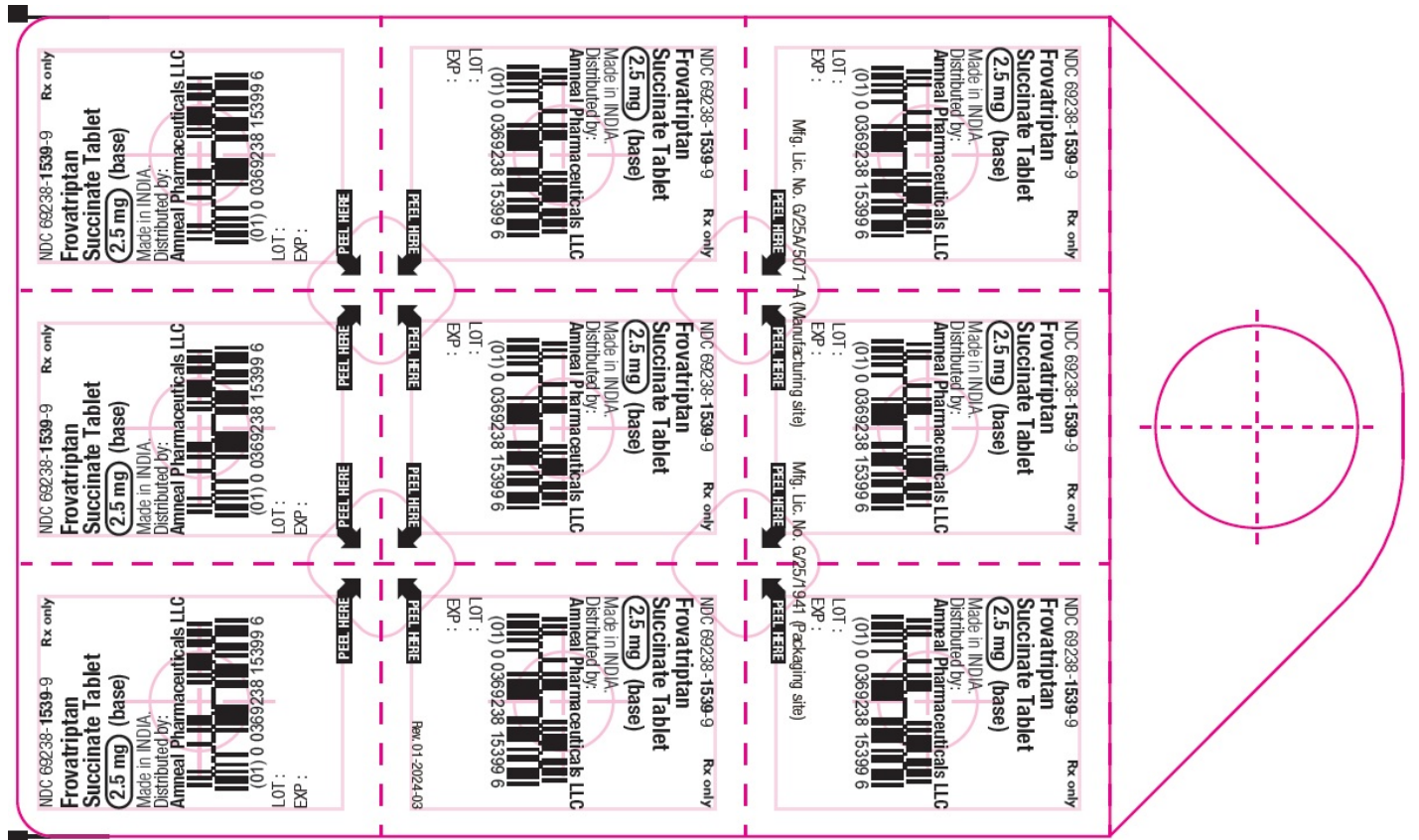
NDC 69238-1539-9

Frovatriptan Succinate Tablets, 2.5 mg

Rx Only

Carton of 9 Tablets

Amneal Pharmaceuticals LLC



Non-Varnish Area
(For Lot And Exp. Date)

*Each film-coated tablet contains:
Frovatriptan Succinate..... 3.91 mg
(equivalent to 2.5 mg frovatriptan).

DOSAGE AND ADMINISTRATION: See package insert
for prescribing information.

**Store at 20° to 25°C (68° to 77°F); excursions
permitted between 15° to 30°C (59° to 86°F)
[see USP Controlled Room Temperature].
Protect from moisture.**

**Keep this and all medications out of the reach of
children.**

To access the blister:

1. Open the flap of carton.
2. Gently push both side tabs and pull the tray outward
at the same time.

Mfg. Lic. No. G/25A/5071-A (Manufacturing site)
Mfg. Lic. No. G/25/1941 (Packaging site)

Manufactured by: **Amneal Pharmaceuticals Pvt. Ltd.**
Oral Solid Dosage Unit
Ahmedabad 382213, INDIA

Packed by: **Amneal Pharmaceuticals Pvt. Ltd.**
Ahmedabad 382220, INDIA

Distributed by: **Amneal Pharmaceuticals LLC**
Bridgewater, NJ 08807

Rev. 02-2019-01

Frovatriptan Succinate Tablets

2.5 mg*

Visit
www.amneal.com
or call 1-877-835-5472

PUSH

NDC 69238-1539-9

Frovatriptan Succinate Tablets

2.5 mg*

PULL

9 (1 x 9) Unit-Dose Tablets

Rx only

 amneal®

PUSH


N 3 69238 15399 6

FROVATRIPTAN

frovatriptan succinate tablet, film coated

Product Information

Product Type	HUMAN PRESCRIPTION DRUG	Item Code (Source)	NDC:69238-1539
Route of Administration	ORAL		

Active Ingredient/Active Moiety

Ingredient Name	Basis of Strength	Strength
FROVATRIPTAN SUCCINATE (UNII: D28J6W18HY) (FROVATRIPTAN - UNII:H82Q2D5WA7)	FROVATRIPTAN	2.5 mg

Inactive Ingredients

Ingredient Name	Strength
ANHYDROUS LACTOSE (UNII: 3SY5LH9PMK)	
HYPROMELLOSE 2910 (6 MPA.S) (UNII: 0WZ8WG20P6)	
LACTOSE MONOHYDRATE (UNII: EWQ57Q8I5X)	
MAGNESIUM STEARATE (UNII: 70097M6I30)	
MICROCRYSTALLINE CELLULOSE (UNII: OP1R32D61U)	
POLYETHYLENE GLYCOL 4000 (UNII: 4R4HFI6D95)	
SILICON DIOXIDE (UNII: ETJ7Z6XBU4)	
SODIUM STARCH GLYCOLATE TYPE A POTATO (UNII: 5856J3G2A2)	
TITANIUM DIOXIDE (UNII: 15FIX9V2JP)	
TRIACETIN (UNII: XHX3C3X673)	

Product Characteristics

Color	white (white to off white)	Score	no score
Shape	ROUND	Size	7mm
Flavor		Imprint Code	A5
Contains			

Packaging

#	Item Code	Package Description	Marketing Start Date	Marketing End Date
1	NDC:69238-1539-9	1 in 1 CARTON	11/13/2018	
1		9 in 1 BLISTER PACK; Type 0: Not a Combination Product		

Marketing Information

Marketing Category	Application Number or Monograph Citation	Marketing Start Date	Marketing End Date
ANDA	ANDA211292	11/13/2018	

Labeler - Amneal Pharmaceuticals NY LLC (123797875)

Establishment

Name	Address	ID/FEI	Business Operations
Amneal Pharmaceuticals Private Limited		915076126	label(69238-1539) , pack(69238-1539)

Establishment

Name	Address	ID/FEI	Business Operations
Amneal Pharmaceuticals Private Limited		650762060	manufacture(69238-1539)

Revised: 9/2019

Amneal Pharmaceuticals NY LLC