

**EPINASTINE HYDROCHLORIDE- epinastine hydrochloride solution/ drops**  
**Breckenridge Pharmaceutical, Inc.**

-----

**HIGHLIGHTS OF PRESCRIBING INFORMATION**

These highlights do not include all the information needed to use EPINASTINE HCL OPHTHALMIC SOLUTION, 0.05% safely and effectively. See full prescribing information for EPINASTINE HCL OPHTHALMIC SOLUTION, 0.05%

**EPINASTINE HCL ophthalmic solution, 0.05%**  
**Initial U.S. Approval: 2003**

----- **INDICATIONS AND USAGE** -----

**Epinastine HCl Ophthalmic Solution 0.05%** is an H<sub>1</sub> histamine receptor antagonist indicated for the prevention of itching associated with allergic conjunctivitis. (1)

----- **DOSAGE AND ADMINISTRATION** -----

The recommended dosage is one drop in each eye twice a day. (2)

----- **DOSAGE FORMS AND STRENGTHS** -----

Ophthalmic solution containing 0.5 mg/mL epinastine HCl. (3)

----- **CONTRAINDICATIONS** -----

None (4)

----- **WARNINGS AND PRECAUTIONS** -----

- To minimize the risk of contamination, do not touch dropper tip to any surface. Keep bottle tightly closed when not in use. (5.1)
- **Epinastine HCl Ophthalmic Solution 0.05%** should not be used to treat contact lens-related irritation. (5.2)
- Remove contact lenses prior to instillation of **Epinastine HCl Ophthalmic Solution 0.05%**. (5.2)

----- **ADVERSE REACTIONS** -----

The most common ocular adverse reactions (incidence occurring in approximately 1% - 10% of **Epinastine HCl Ophthalmic Solution 0.05%** - treated eyes were burning sensation in the eye, folliculosis, hyperemia, and pruritus. The most common non-ocular adverse reactions, occurring in 10% of **Epinastine HCl Ophthalmic Solution 0.05%** -treated eyes, were infection (cold symptoms and upper respiratory infections). (6.1)

To report SUSPECTED ADVERSE REACTIONS, contact Breckenridge Pharmaceutical, Inc. at 1-800-367-3395 or FDA at 1-800-FDA-1088 or [www.fda.gov/medwatch](http://www.fda.gov/medwatch)

See 17 for PATIENT COUNSELING INFORMATION.

Revised: 4/2020

---

**FULL PRESCRIBING INFORMATION: CONTENTS\***

**1 INDICATIONS AND USAGE**

**2 DOSAGE AND ADMINISTRATION**

**3 DOSAGE FORMS AND STRENGTHS**

**4 CONTRAINDICATIONS**

**5 WARNINGS AND PRECAUTIONS**

5.1 Contamination of Tip and Solution

5.2 Use with Contact Lenses

5.3 Topical Ophthalmic Use Only

**6 ADVERSE REACTIONS**

6.1 Clinical Studies Experience

6.2 Postmarketing Experience

**8 USE IN SPECIFIC POPULATIONS**

8.1 Pregnancy

8.3 Nursing Mothers

8.4 Pediatric Use

8.5 Geriatric Use

**11 DESCRIPTION**

**12 CLINICAL PHARMACOLOGY**

12.1 Mechanism of Action

12.3 Pharmacokinetics

**13 NONCLINICAL TOXICOLOGY**

13.1 Carcinogenesis, Mutagenesis, Impairment of Fertility

**14 CLINICAL STUDIES**

**16 HOW SUPPLIED/STORAGE AND HANDLING**

**17 PATIENT COUNSELING INFORMATION**

17.1 Sterility of Dropper Tip

17.2 Concomitant Use of Contact Lenses

17.3 Topical Ophthalmic Use Only

\* Sections or subsections omitted from the full prescribing information are not listed.

---

**FULL PRESCRIBING INFORMATION**

**1 INDICATIONS AND USAGE**

**Epinastine HCl Ophthalmic Solution 0.05%** is indicated for the prevention of itching associated with allergic conjunctivitis.

**2 DOSAGE AND ADMINISTRATION**

The recommended dosage is one drop in each eye twice a day.

Treatment should be continued throughout the period of exposure (i.e., until the pollen season is over or until exposure to the offending allergen is terminated), even when symptoms are absent.

**3 DOSAGE FORMS AND STRENGTHS**

Solution containing 0.5 mg/mL epinastine HCl

**4 CONTRAINDICATIONS**

None

**5 WARNINGS AND PRECAUTIONS**

**5.1 Contamination of Tip and Solution**

Patients should be instructed to avoid allowing the tip of the dispensing container to contact the eye, surrounding structures, fingers, or any other surface in order to avoid contamination of the solution by common bacteria known to cause ocular infections. Serious damage to the eye and subsequent loss of vision may result from using contaminated solutions.

Bottle should be kept tightly closed when not in use.

**5.2 Use with Contact Lenses**

Patients should be advised not to wear a contact lens if their eye is red. **Epinastine HCl Ophthalmic**

**Solution 0.05%** should not be used to treat contact lens-related irritation.

The preservative in **Epinastine HCl ophthalmic solution 0.05%**, benzalkonium chloride, may be absorbed by soft contact lenses. Contact lenses should be removed prior to instillation of **Epinastine HCl Ophthalmic Solution 0.05%** and may be reinserted after 10 minutes following its administration.

### 5.3 Topical Ophthalmic Use Only

**Epinastine HCl Ophthalmic Solution 0.05%** is for topical ophthalmic use only and not for injection or oral use.

## 6 ADVERSE REACTIONS

### 6.1 Clinical Studies Experience

Because clinical studies are conducted under widely varying conditions, adverse reaction rates observed in the clinical studies of a drug cannot be directly compared to rates in the clinical studies of another drug and may not reflect the rates observed in practice.

The most frequently reported ocular adverse reactions occurring in approximately 1-10% of patients were burning sensation in the eye, folliculosis, hyperemia, and pruritus.

The most frequently reported non-ocular adverse reactions were infection (cold symptoms and upper respiratory infections), seen in approximately 10% of patients, and headache, rhinitis, sinusitis, increased cough, and pharyngitis, seen in approximately 1 - 3% of patients.

Some of these reactions were similar to the underlying disease being studied.

### 6.2 Postmarketing Experience

The following reactions have been identified during postmarketing use of **Epinastine HCl Ophthalmic Solution 0.05%** in clinical practice. Because they are reported voluntarily from a population of unknown size, estimates of frequency cannot be made. The reactions, which have been chosen for inclusion due to either their seriousness, frequency of reporting, possible causal connection to **Epinastine HCl Ophthalmic Solution 0.05%**, or a combination of these factors, include: lacrimation increased.

## 8 USE IN SPECIFIC POPULATIONS

### 8.1 Pregnancy

Teratogenic Effects

Pregnancy Category C

In an embryofetal developmental study in pregnant rats, maternal toxicity with no embryofetal effects was observed at an oral dose that was approximately 150,000 times the maximum recommended ocular human dose (MROHD) of 0.0014 mg/kg/day on a mg/kg basis. Total resorptions and abortion were observed in an embryofetal study in pregnant rabbits at an oral dose that was approximately 55,000 times the MROHD. In both studies, no drug-induced teratogenic effects were noted.

Epinastine reduced pup body weight gain following an oral dose to pregnant rats that was approximately 90,000 times the MROHD.

There are, however, no adequate and well-controlled studies in pregnant women. Because animal reproduction studies are not always predictive of human response, **Epinastine HCl Ophthalmic Solution 0.05%** should be used during pregnancy only if the potential benefit justifies the potential risk to the fetus.

### 8.3 Nursing Mothers

A study in lactating rats revealed excretion of epinastine in the breast milk. It is not known whether this drug is excreted in human milk. Because many drugs are excreted in human milk, caution should be exercised when **Epinastine HCl Ophthalmic Solution 0.05%** is administered to a nursing woman.

### 8.4 Pediatric Use

Safety and effectiveness in pediatric patients below the age of 2 years have not been established.

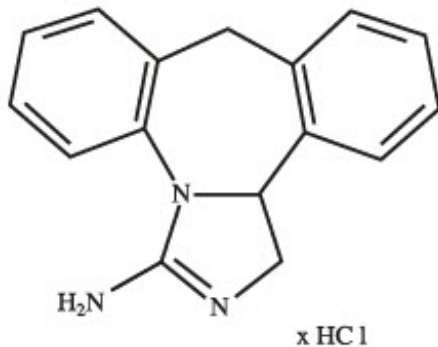
### 8.5 Geriatric Use

No overall differences in safety or effectiveness have been observed between elderly and younger patients.

## 11 DESCRIPTION

**Epinastine HCl Ophthalmic Solution 0.05%** is a clear, colorless, sterile isotonic solution containing epinastine HCl, an antihistamine and an inhibitor of histamine release from the mast cell for topical administration to the eyes.

Epinastine HCl is represented by the following structural formula:



$\text{C}_{16}\text{H}_{15}\text{N}_3\text{HCl}$  Mol. Wt. 285.78

#### Chemical Name:

3-Amino-9,13b-dihydro-1H-dibenz[c,f]imidazo[1,5-a]azepine hydrochloride

**Each mL contains: Active:** Epinastine HCl 0.05% (0.5 mg/mL) equivalent to epinastine 0.044% (0.44 mg/mL); **Preservative:** Benzalkonium chloride 0.01%; **Inactives:** Edetate disodium, dihydrate; purified water; sodium chloride; sodium phosphate, monobasic, anhydrous; and sodium hydroxide and/or hydrochloric acid (to adjust pH).

**Epinastine HCl Ophthalmic Solution 0.05%** has a pH of approximately 7 and an osmolality range of 250 to 310 mOsm/kg.

## 12 CLINICAL PHARMACOLOGY

### 12.1 Mechanism of Action

Epinastine is a topically active, direct  $\text{H}_1$ -receptor antagonist and an inhibitor of the release of histamine from the mast cell. Epinastine is selective for the histamine  $\text{H}_1$ -receptor and has affinity for the histamine  $\text{H}_2$ -receptor. Epinastine also possesses affinity for the  $\alpha_1$ ,  $\alpha_2$ -, and  $5\text{-HT}_2$ -receptors.

### 12.3 Pharmacokinetics

Fourteen subjects, with allergic conjunctivitis, received one drop of **Epinastine HCl Ophthalmic Solution 0.05%** in each eye twice daily for 7 days. On day 7, average maximum epinastine plasma

concentrations of  $0.04 \pm 0.014$  ng/ml were reached after about two hours indicating low systemic exposure. While these concentrations represented an increase over those seen following a single dose, the day 1 and day 7 Area Under the Curve (AUC) values were unchanged indicating that there is no increase in systemic absorption with multiple dosing. Epinastine is 64% bound to plasma proteins. The total systemic clearance is approximately 56 L/hr and the terminal plasma elimination half-life is about 12 hours. Epinastine is mainly excreted unchanged. About 55% of an intravenous dose is recovered unchanged in the urine with about 30% in feces. Less than 10% is metabolized. The renal elimination is mainly via active tubular secretion.

## 13 NONCLINICAL TOXICOLOGY

### 13.1 Carcinogenesis, Mutagenesis, Impairment of Fertility

In 18-month or 2-year dietary carcinogenicity studies in mice or rats, respectively, epinastine was not carcinogenic at doses up to 40 mg/kg [approximately 30,000 times higher than the MROHD, assuming 100% absorption in humans and animals].

Epinastine in newly synthesized batches was negative for mutagenicity in the Ames/*Salmonella* assay and *in vitro* chromosome aberration assay using human lymphocytes. Positive results were seen with early batches of epinastine in two *in vitro* chromosomal aberration studies conducted in 1980s with human peripheral lymphocytes and with V79 cells, respectively. Epinastine was negative in the *in vivo* clastogenicity studies, including the mouse micronucleus assay and chromosome aberration assay in Chinese hamsters. Epinastine was also negative in the cell transformation assay using Syrian hamster embryo cells, V79/HGPRT mammalian cell point mutation assay, and *in vivo/in vitro* unscheduled DNA synthesis assay using rat primary hepatocytes.

Epinastine had no effect on fertility of male rats. Decreased fertility in female rats was observed at an oral dose up to approximately 90,000 times the MROHD.

## 14 CLINICAL STUDIES

Epinastine HCl 0.05% has been shown to be significantly superior to vehicle for improving ocular itching in patients with allergic conjunctivitis in clinical studies using two different models: (1) conjunctival antigen challenge (CAC) where patients were dosed and then received antigen instilled into the inferior conjunctival fornix; and (2) environmental field studies where patients were dosed and evaluated during allergy season in their natural habitat. Results demonstrated a rapid onset of action for epinastine HCl 0.05% within 3 to 5 minutes after conjunctival antigen challenge. Duration of effect was shown to be 8 hours, making a twice daily regimen suitable. This dosing regimen was shown to be safe and effective for up to 8 weeks, without evidence of tachyphylaxis.

## 16 HOW SUPPLIED/STORAGE AND HANDLING

**Epinastine HCl Ophthalmic Solution 0.05%** is supplied sterile in opaque white LDPE plastic bottles with dropper tips and white polypropylene (PP) caps as follows:

5 mL in 10 mL  
bottle                      NDC 51991-836-75

**Storage:** Store at 20° - 25°C (68° - 77°F) [see USP Controlled Room Temperature]. Keep bottle tightly closed and out of the reach of children.

## 17 PATIENT COUNSELING INFORMATION

### **17.1 Sterility of Dropper Tip**

Patients should be advised not to touch dropper tip to any surface, as this may contaminate the contents (see **WARNINGS AND PRECAUTIONS, 5.1**).

### **17.2 Concomitant Use of Contact Lenses**

Patients should be advised not to wear a contact lens if their eye is red. Patients should be advised that **Epinastine HCl Ophthalmic Solution 0.05%** should not be used to treat contact lens-related irritation. Patients should also be advised to remove contact lenses prior to instillation of **Epinastine HCl Ophthalmic Solution 0.05%**.

The preservative in **Epinastine HCl Ophthalmic Solution 0.05%**, benzalkonium chloride, may be absorbed by soft contact lenses. Lenses may be reinserted after 10 minutes following administration of **Epinastine HCl Ophthalmic Solution 0.05%**

### **17.3 Topical Ophthalmic Use Only**

For topical ophthalmic administration only.

#### **Rx only**

Distributed by:

Breckenridge Pharmaceutical, Inc.

Berlin, CT 06037

Manufactured by:

PrimaPharma, Inc.

San Diego, CA 92121

Rev: 04/2020

2323 04/20

### **PRINCIPAL DISPLAY PANEL - 5 mL Bottle Carton**

NDC 51991-836-75

Epinastine HCl

Ophthalmic

Solution,

0.05%

FOR USE IN THE

EYES ONLY

sterile

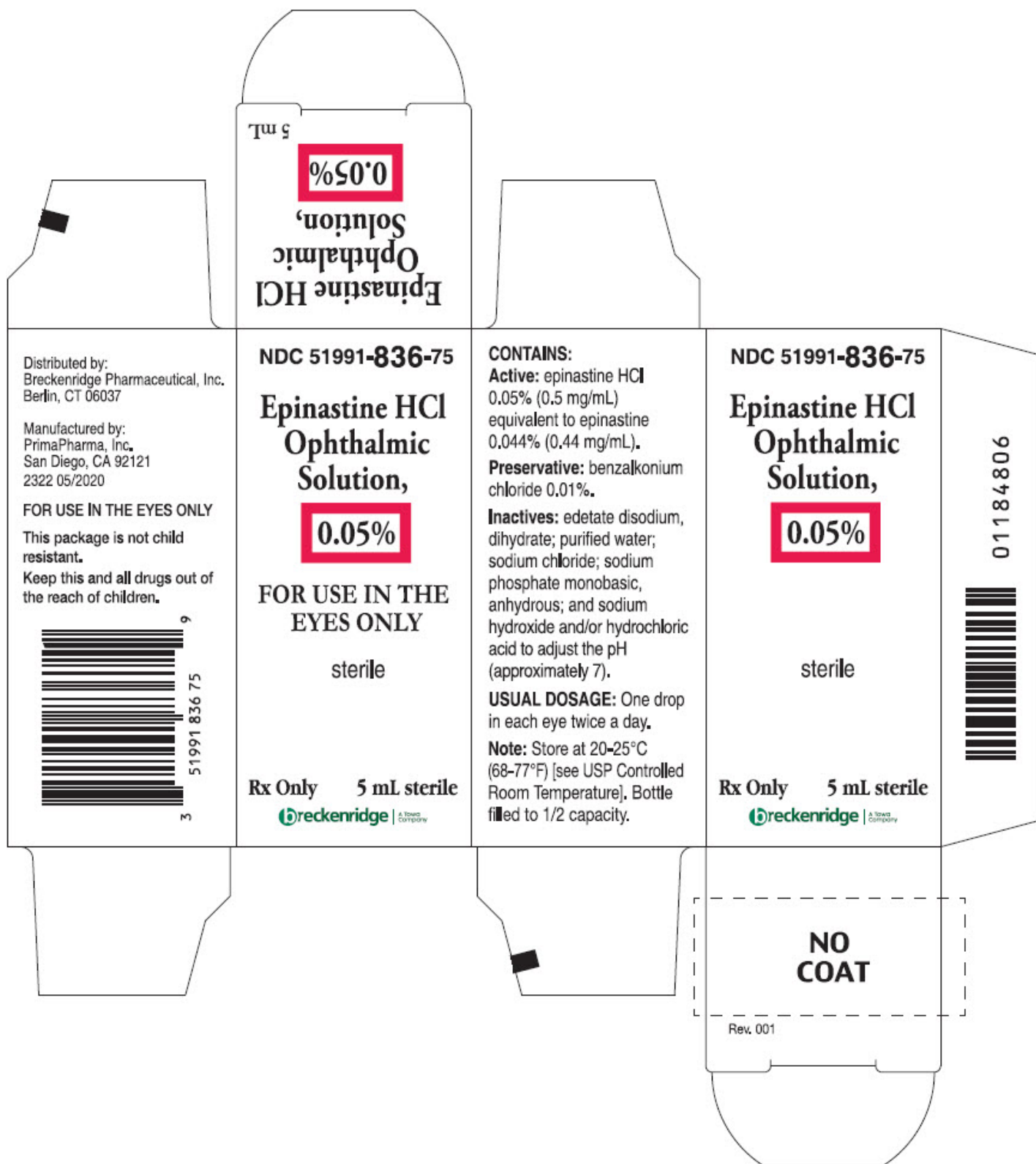
Rx Only

5 mL sterile

breckenridge

A Towa

Company



## EPINASTINE HYDROCHLORIDE

epinastine hydrochloride solution/ drops

### Product Information

<b>Product Type</b>	HUMAN PRESCRIPTION DRUG	<b>Item Code (Source)</b>	NDC:51991-836
<b>Route of Administration</b>	OPHTHALMIC		

**Active Ingredient/Active Moiety**

Ingredient Name	Basis of Strength	Strength
<b>Epinastine Hydrochloride</b> (UNII: GFM415S5XL) (Epinastine - UNII:Q13WX941EF)	Epinastine Hydrochloride	0.5 mg in 1 mL

**Inactive Ingredients**

Ingredient Name	Strength
<b>benzalkonium chloride</b> (UNII: F5UM2KM3W7)	0.1 mg in 1 mL
<b>edetate sodium</b> (UNII: MP1J8420LU)	
<b>water</b> (UNII: 059QF0K00R)	
<b>sodium chloride</b> (UNII: 451W47IQ8X)	
<b>sodium phosphate, monobasic, anhydrous</b> (UNII: KH7I04HPUU)	
<b>sodium hydroxide</b> (UNII: 55X04QC32I)	
<b>hydrochloric acid</b> (UNII: QTT17582CB)	

**Packaging**

#	Item Code	Package Description	Marketing Start Date	Marketing End Date
1	NDC:51991-836-75	1 in 1 CARTON	11/05/2013	
1		5 mL in 1 BOTTLE, DROPPER; Type 0: Not a Combination Product		

**Marketing Information**

Marketing Category	Application Number or Monograph Citation	Marketing Start Date	Marketing End Date
ANDA	ANDA090870	11/05/2013	

**Labeler** - Breckenridge Pharmaceutical, Inc. (150554335)**Establishment**

Name	Address	ID/FEI	Business Operations
PrimaPharma, Inc.		079699106	MANUFACTURE(51991-836)

Revised: 6/2020

Breckenridge Pharmaceutical, Inc.