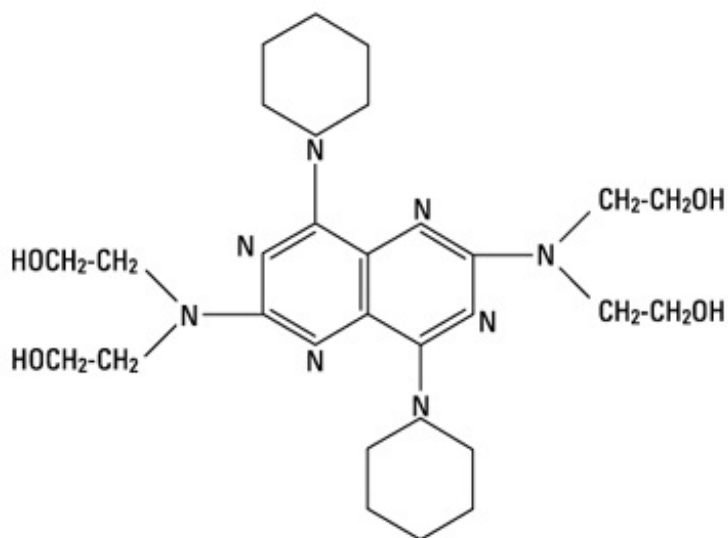


DIPYRIDAMOLE- dipyridamole injection, solution
HOSPIRA, INC.

Dipyridamole
Injection
For Intravenous Injection
R_x only

DESCRIPTION

Dipyridamole is a coronary vasodilator described as 2,6 bis-(diethanolamino)-4,8-dipiperidino-pyrimido-(5,4-d) pyrimidine. It has the molecular formula C₂₄H₄₀N₈O₄ and the following structural formula:



M. W. 504.64

Dipyridamole injection is an odorless, pale yellow liquid which can be diluted in sodium chloride injection or dextrose injection for intravenous administration.

Each mL of sterile solution for intravenous administration contains 5 mg dipyridamole, with 2 mg tartaric acid, and 50 mg polyethylene glycol 600. pH is adjusted to 2.2 to 3.2 with hydrochloric acid.

CLINICAL PHARMACOLOGY

In a study of 10 patients with angiographically normal or minimally stenosed (less than 25% luminal diameter narrowing) coronary vessels, dipyridamole in a dose of 0.56 mg/kg infused over 4 minutes resulted in an average fivefold increase in coronary blood flow velocity compared to resting coronary flow velocity (range 3.8 to 7 times resting velocity). The mean time to peak flow velocity was 6.5 minutes from the start of the 4-minute infusion (range 2.5 to 8.7 minutes). Cardiovascular responses to the intra venous administration of dipyridamole when given to patients in the supine position include a mild but significant increase in heart rate of approximately 20% and mild but significant decreases in both systolic and diastolic blood pressure of approximately 2 to 8%, with vital signs returning to baseline values in approximately 30 minutes.

Mechanism of Action: Dipyridamole is a coronary vasodilator in man. The mechanism of vasodilation has not been fully elucidated, but may result from inhibition of uptake of adenosine, an important mediator of coronary vasodilation. The vasodilatory effects of dipyridamole are abolished by administration of the adenosine receptor antagonist theophylline.

How dipyridamole-induced vasodilation leads to abnormalities in thallium distribution and ventricular function is also uncertain but presumably represents a “steal” phenomenon in which relatively intact vessels dilate, and sustain enhanced flow, leaving reduced pressure and flow across areas of hemodynamically important coronary vascular constriction.

Pharmacokinetics and Metabolism: Plasma dipyridamole concentrations decline in a triexponential fashion following intravenous infusion of dipyridamole, with half-lives averaging 3 to 12 minutes, 33 to 62 minutes, and 11.6 to 15 hours. Two minutes following a 0.568 mg/kg dose of intravenous dipyridamole administered as a 4-minute infusion, the mean dipyridamole serum concentration is 4.6 ± 1.3 mcg/mL. The average plasma protein binding of dipyridamole is approximately 99%, primarily to α_1 -glycoprotein. Dipyridamole is metabolized in the liver to the glucuronic acid conjugate and excreted with the bile. The average total body clearance is 2.3 to 3.5 mL/min/kg, with an apparent volume of distribution at steady state of 1 to 2.5 L/kg and a central apparent volume of 3 to 5 liters.

INDICATIONS AND USAGE

Dipyridamole injection is indicated as an alternative to exercise in thallium myocardial perfusion imaging for the evaluation of coronary artery disease in patients who cannot exercise adequately.

In a study of about 1100 patients who underwent coronary arteriography and dipyridamole injection assisted thallium imaging, the results of both tests were interpreted blindly and the sensitivity and specificity of the dipyridamole thallium study in predicting the angiographic outcome were calculated. The sensitivity of the dipyridamole test (true positive dipyridamole divided by the total number of patients with positive angiography) was about 85%. The specificity (true negative divided by the number of patients with negative angiograms) was about 50%.

In a subset of patients who had exercise thallium imaging as well as dipyridamole thallium imaging, sensitivity and specificity of the two tests was almost identical.

CONTRAINDICATIONS

Hypersensitivity to dipyridamole.

WARNINGS

Serious adverse reactions associated with the administration of intravenous dipyridamole have included cardiac death, fatal and non-fatal myocardial infarction, ventricular fibrillation, symptomatic ventricular tachycardia, stroke, transient cerebral ischemia, seizures, anaphylactoid reaction and bronchospasm. There have been reported cases of asystole, sinus node arrest, sinus node depression and conduction block. Patients with abnormalities of cardiac impulse formation/conduction or severe coronary artery disease may be at increased risk for these events.

In a study of 3911 patients given intravenous dipyridamole as an adjunct to thallium myocardial perfusion imaging, two types of serious adverse events were reported: 1) four cases of myocardial infarction (0.1%), two fatal (0.05%); and two non-fatal (0.05%); and 2) six cases of severe bronchospasm (0.2%). Although the incidence of these serious adverse events was small (0.3%, 10 of 3911), the potential clinical information to be gained through use of intravenous dipyridamole thallium imaging (see INDICATIONS AND USAGE noting the rate of false positive and false negative results) must be weighed against the risk to the patient. Patients with a history of unstable angina may be at a greater risk for severe myocardial ischemia. Patients with a history of asthma may be at a greater risk for bronchospasm during dipyridamole use.

When thallium myocardial perfusion imaging is performed with intravenous dipyridamole, parenteral aminophylline should be readily available for relieving adverse events such as bronchospasm or chest pain. Vital signs should be monitored during, and for 10 to 15 minutes following, the intravenous

infusion of dipyridamole and an electrocardiographic tracing should be obtained using at least one chest lead. Should severe chest pain or bronchospasm occur, parenteral aminophylline may be administered by slow intravenous injection (50 to 100 mg over 30 to 60 seconds) in doses ranging from 50 to 250 mg. In the case of severe hypotension, the patient should be placed in a supine position with the head tilted down if necessary, before administration of parenteral aminophylline. If 250 mg of aminophylline does not relieve chest pain symptoms within a few minutes, sublingual nitroglycerin may be administered. If chest pain continues despite use of aminophylline and nitroglycerin, the possibility of myocardial infarction should be considered. If the clinical condition of a patient with an adverse event permits a one minute delay in the administration of parenteral aminophylline, thallium-201 may be injected and allowed to circulate for one minute before the injection of aminophylline. This will allow initial thallium perfusion imaging to be performed before reversal of the pharmacologic effects of dipyridamole on the coronary circulation.

PRECAUTIONS

See WARNINGS

Drug Interactions:

Oral maintenance theophylline and other xanthine derivatives such as caffeine may abolish the coronary vasodilatation induced by intravenous dipyridamole administration. This could lead to a false negative thallium imaging result (see **CLINICAL PHARMACOLOGY, Mechanism of Action**).

Myasthenia gravis patients receiving therapy with cholinesterase inhibitors may experience worsening of their disease in the presence of dipyridamole.

Carcinogenesis, Mutagenesis, Impairment of Fertility:

In studies in which dipyridamole was administered in the feed at doses of up to 75 mg/kg/day (9.4 times* the maximum recommended daily human oral dose) in mice (up to 128 weeks in males and up to 142 weeks in females) and rats (up to 111 weeks in males and females), there was no evidence of drug related carcinogenesis. Mutagenicity tests of dipyridamole with bacterial and mammalian cell systems were negative. There was no evidence of impaired fertility when dipyridamole was administered to male and female rats at oral doses up to 500 mg/kg/day (63 times* the maximum recommended daily human oral dose). A significant reduction in number of corpora lutea with consequent reduction in implantations and live fetuses was, however, observed at 1250 mg/kg/day.

*Calculation based on assumed body weight of 50 kg.

Pregnancy Category B:

Reproduction studies performed in mice and rats at daily oral doses of up to 125 mg/kg (15.6 times* the maximum recommended daily human oral dose) and in rabbits at daily oral doses of up to 20 mg/kg (2.5 times* the maximum recommended daily human oral dose) have revealed no evidence of impaired embryonic development due to dipyridamole. There are, however, no adequate and well controlled studies in pregnant women. Because animal reproduction studies are not always predictive of human responses, this drug should be used during pregnancy only if clearly needed.

*Calculation based on assumed body weight of 50 kg.

Nursing Mothers:

Dipyridamole is excreted in human milk.

Pediatric Use:

Safety and effectiveness in pediatric patients have not been established.

ADVERSE REACTIONS

Adverse reaction information concerning intravenous dipyridamole is derived from a study of 3911 patients in which intravenous dipyridamole was used as an adjunct to thallium myocardial perfusion imaging and from spontaneous reports of adverse reactions and the published literature.

Serious adverse events (cardiac death, fatal and non-fatal myocardial infarction, ventricular fibrillation, asystole, sinus node arrest, symptomatic ventricular tachycardia, stroke, transient cerebral ischemia, seizures, anaphylactoid reaction and bronchospasm) are described above (see **WARNINGS**).

In the study of 3911 patients, the most frequent adverse reactions were: chest pain/angina pectoris (19.7%), electrocardiographic changes (most commonly ST-T changes) (15.9%), headache (12.2%), and dizziness (11.8%).

Adverse reactions occurring in greater than 1% of the patients in the study are shown in the following table:

	Incidence (%) of Drug-Related Adverse Events
Chest pain/angina pectoris	19.7
Headache	12.2
Dizziness	11.8
Electrocardiographic Abnormalities/ST-T changes	7.5
Electrocardiographic Abnormalities/Extrasystoles	5.2
Hypotension	4.6
Nausea	4.6
Flushing	3.4
Electrocardiographic Abnormalities/Tachycardia	3.2
Dyspnea	2.6
Pain Unspecified	2.6
Blood Pressure Lability	1.6
Hypertension	1.5
Paresthesia	1.3
Fatigue	1.2

Less common adverse reactions occurring in 1% or less of the patients within the study included:

Cardiovascular System: Electrocardiographic abnormalities unspecified (0.8%), arrhythmia unspecified (0.6%), palpitation (0.3%), ventricular tachycardia (0.2% see **WARNINGS**), bradycardia (0.2%), myocardial infarction (0.1% see **WARNINGS**), AV block (0.1%), syncope (0.1%), orthostatic hypotension (0.1%), atrial fibrillation (0.1%), supraventricular tachycardia (0.1%), ventricular arrhythmia unspecified (0.03% see **WARNINGS**), heart block unspecified (0.03%), cardiomyopathy (0.03%), edema (0.03%).

Central and Peripheral Nervous System: Hypoesthesia (0.5%), hypertonia (0.3%), nervousness/anxiety (0.2%), tremor (0.1%), abnormal coordination (0.03%), somnolence (0.03%), dysphonia (0.03%), migraine (0.03%), vertigo (0.03%).

Gastrointestinal System: Dyspepsia (1%), dry mouth (0.8%), abdominal pain (0.7%), flatulence (0.6%), vomiting (0.4%), eructation (0.1%), dysphagia (0.03%), tenesmus (0.03%), appetite increased (0.03%).

Respiratory System: Pharyngitis (0.3%), bronchospasm (0.2% see **WARNINGS**), hyperventilation (0.1%), rhinitis (0.1%), coughing (0.03%), pleural pain (0.03%).

Other: Myalgia (0.9%), back pain (0.6%), injection site reaction unspecified (0.4%), diaphoresis (0.4%), asthenia (0.3%), malaise (0.3%), arthralgia (0.3%), injection site pain (0.1%), rigor (0.1%),

earache (0.1%), tinnitus (0.1%), vision abnormalities unspecified (0.1%), dysgeusia (0.1%), thirst (0.03%), depersonalization (0.03%), eye pain (0.03%), renal pain (0.03%), perineal pain (0.03%), breast pain (0.03%), intermittent claudication (0.03%), leg cramping (0.03%). In additional postmarketing experience, there have been rare reports of allergic reaction including urticaria, pruritus, dermatitis and rash.

OVERDOSAGE

No cases of overdose in humans have been reported. It is unlikely that overdose will occur because of the nature of use (i.e., single intravenous administration in controlled settings). See WARNINGS.

DOSAGE AND ADMINISTRATION

The dose of intravenous dipyridamole as an adjunct to thallium myocardial perfusion imaging should be adjusted according to the weight of the patient. The recommended dose is 0.142 mg/kg/minute (0.57 mg/kg total) infused over 4 minutes. Although the maximum tolerated dose has not been determined, clinical experience suggests that a total dose beyond 60 mg is not needed for any patient.

Prior to intravenous administration, dipyridamole injection should be diluted in at least a 1:2 ratio with sodium chloride injection, 0.45%; sodium chloride injection, 0.9%; or dextrose injection, 5% for a total volume of approximately 20 to 50 mL. Infusion of undiluted dipyridamole may cause local irritation.

Thallium-201 should be injected within 5 minutes following the 4-minute infusion of dipyridamole.

Do not mix dipyridamole injection with other drugs in the same syringe or infusion container.

Parenteral drug products should be inspected visually for particulate matter and discoloration prior to administration, whenever solution and container permit.

HOW SUPPLIED

Dipyridamole Injection, is available in 2 mL and 10 mL ampules:

10 mg/2 mL (5 mg per mL) Box of 10 (List 2043).

50 mg/10 mL (5 mg per mL) Box of 10 (List 2043).

Store between 15°C (59°F) – 25°C (77°F).

Protect from direct light. Retain in carton until time of use.

Avoid freezing.

©Hospira 2004 EN-0451 Printed in USA

HOSPIRA, INC., LAKE FOREST, IL 60045 USA

DIPYRIDAMOLE			
dipyridamole injection, solution			
Product Information			
Product Type	HUMAN PRESCRIPTION DRUG	Item Code (Source)	NDC:0409-2043
Route of Administration	INTRAVENOUS		

Active Ingredient/Active Moiety

Ingredient Name	Basis of Strength	Strength
Dipyridamole (UNII: 64ALC7F90C) (Dipyridamole - UNII:64ALC7F90C)		5 mg in 1 mL

Inactive Ingredients

Ingredient Name	Strength
Tartaric Acid (UNII: W4888I119H)	2 mg in 1 mL
Polyethylene Glycol 600 ()	50 mg in 1 mL
Hydrochloric Acid (UNII: QTT17582CB)	

Packaging

#	Item Code	Package Description	Marketing Start Date	Marketing End Date
1	NDC:0409-2043-02	50 in 1 CASE		
1		10 in 1 BOX		
1		2 mL in 1 AMPULE		

DIPYRIDAMOLE

dipyridamole injection, solution

Product Information

Product Type	HUMAN PRESCRIPTION DRUG	Item Code (Source)	NDC:0074-2043
Route of Administration	INTRAVENOUS		

Active Ingredient/Active Moiety

Ingredient Name	Basis of Strength	Strength
Dipyridamole (UNII: 64ALC7F90C) (Dipyridamole - UNII:64ALC7F90C)		5 mg in 1 mL

Inactive Ingredients

Ingredient Name	Strength
Tartaric Acid (UNII: W4888I119H)	2 mg in 1 mL
Polyethylene Glycol 600 ()	50 mg in 1 mL
Hydrochloric Acid (UNII: QTT17582CB)	

Packaging

#	Item Code	Package Description	Marketing Start Date	Marketing End Date
1	NDC:0074-2043-10	10 in 1 CASE		
1		10 in 1 BOX		
1		10 mL in 1 AMPULE		

Labeler - HOSPIRA, INC.

HOSPIRA, INC.