

AWAKE MAXIMUM STRENGTH- caffeine tablet, film coated
Walgreen Company

Disclaimer: Most OTC drugs are not reviewed and approved by FDA, however they may be marketed if they comply with applicable regulations and policies. FDA has not evaluated whether this product complies.

Walgreens 44-344

Active ingredient (in each caplet)

Caffeine 200 mg

Purpose

Alertness aid

Uses

helps restore mental alertness or wakefulness when experiencing fatigue or drowsiness

Warnings

For occasional use only

Caffeine warning: The recommended dose of this product contains about as much **caffeine** as a cup of coffee. Limit the use of caffeine-containing medications, foods, or beverages while taking this product because too much **caffeine** may cause nervousness, irritability, sleeplessness, and, occasionally, rapid heartbeat.

Do not use

- in children under 12 years of age
- as a substitute for sleep

Stop use and ask a doctor if

fatigue or drowsiness persists or continues to recur.

If pregnant or breast-feeding,

ask a health professional before use.

Keep out of reach of children.

In case of overdose, get medical help or contact a Poison Control Center (1-800-222-1222) right away.

Directions

- adults and children 12 years of age and over: take 1/2 to 1 caplet not more often than every 3 to 4 hours

Other information

- store at 25°C (77°F); excursions permitted between 15°-30°C (59°-86°F)
- see end flap for expiration date and lot number

Inactive ingredients

corn starch, dextrose, dicalcium phosphate, flavor, hypromellose, magnesium stearate, microcrystalline cellulose, polyethylene glycol, stearic acid

Questions or comments?

1-800-426-9391

Principal Display Panel

Well at
Walgreens

NDC 0363-3440-11

MAXIMUM STRENGTH

Awake

Caffeine 200 mg /
Alertness Aid

• Fast acting • Easy to swallow

60

COATED CAPLETS

Compare to Maximum Strength

NoDoz[®] active ingredient^{□□}

**TAMPER EVIDENT: DO NOT USE IF IMPRINTED
SAFETY SEAL UNDER CAP IS BROKEN OR MISSING**

^{□□}This product is not manufactured or distributed by Novartis Consumer Health, Inc., owner of the registered trademark Maximum Strength NoDoz[®].

50844 REV0813A34411

**DISTRIBUTED BY: WALGREEN CO.
200 WILMOT RD., DEERFIELD, IL 60015**

Walgreens

100% SATISFACTION GUARANTEED

walgreens.com ©2012 Walgreen Co.

KEEP OUTER PACKAGE FOR COMPLETE PRODUCT INFORMATION

Drug Facts

Active ingredient (in each caplet) Purpose
Caffeine 200 mg. Alertness aid

Uses helps restore mental alertness or wakefulness when experiencing fatigue or drowsiness

Warnings

For occasional use only
Caffeine warning: The recommended dose of this product contains about as much caffeine as a cup of coffee. Limit the use of caffeine-containing medications, foods, or beverages while taking this product because too much caffeine may cause nervousness, irritability, sleeplessness, and, occasionally, rapid heartbeat.

Do not use

- in children under 12 years of age
- as a substitute for sleep

Stop use and ask a doctor if fatigue or drowsiness persists or continues to recur.

If pregnant or breast-feeding, ask a health professional before use.

ORG112-F_R01

DISTRIBUTED BY: WALGREEN CO.
200 WILLMOT RD., DEERFIELD, IL 60015
Walgreens
100% SATISFACTION GUARANTEED
walgreens.com ©2012 Walgreen Co.

Drug Facts (continued)

Keep out of reach of children. In case of overdose, get medical help or contact a Poison Control Center (1-800-222-1222) right away.

Directions

- adults and children 12 years of age and over: take 1/2 to 1 caplet not more often than every 3 to 4 hours

Other information

- store at 25°C (77°F); excursions permitted between 15°-30°C (59°-86°F)
- see end flap for expiration date and lot number

Inactive ingredients

corn starch, dextrose, dicalcium phosphate, flavor, hypromellose, magnesium stearate, microcrystalline cellulose, polyethylene glycol, stearic acid

Questions or comments?

1-800-426-9391

^{††} This product is not manufactured or distributed by Novartis Consumer Health, Inc., owner of the registered trademark, Maximum Strength NoDoz® 50844 REV0813A34411

TAMPER EVIDENT: DO NOT USE IF IMPRINTED SAFETY SEAL UNDER CAP IS BROKEN OR MISSING

ITEM 596991



OMIT B



MAXIMUM STRENGTH

Awake

Caffeine 200 mg /
Alertness Aid

- Fast acting • Easy to swallow

60
COATED CAPLETS



Compare to Maximum Strength NoDoz® active ingredient^{††}

NDC 0363-3440-11

B-2201-344-11-R
REV0813A34411



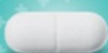
MAXIMUM STRENGTH

Awake

Caffeine 200 mg /
Alertness Aid

- Fast acting • Easy to swallow

60
COATED CAPLETS



Compare to Maximum Strength NoDoz® active ingredient^{††}

NDC 0363-3440-11

34494

LEB6264P

Walgreens 44-344

AWAKE MAXIMUM STRENGTH

caffeine tablet, film coated

Product Information

Product Type

HUMAN OTC DRUG

Item Code (Source)

NDC:0363-3440

Route of Administration	ORAL
--------------------------------	------

Active Ingredient/Active Moiety

Ingredient Name	Basis of Strength	Strength
CAFFEINE (UNII: 3G6A5W338E) (CAFFEINE - UNII:3G6A5W338E)	CAFFEINE	200 mg

Inactive Ingredients

Ingredient Name	Strength
DEXTROSE (UNII: IY9XDZ35W2)	
CALCIUM PHOSPHATE, DIBASIC, ANHYDROUS (UNII: L11K75P92J)	
HYPROMELLOSES (UNII: 3NXW29V3WO)	
MAGNESIUM STEARATE (UNII: 70097M6I30)	
CELLULOSE, MICROCRYSTALLINE (UNII: OP1R32D61U)	
POLYETHYLENE GLYCOLS (UNII: 3WJQ0SDW1A)	
STEARIC ACID (UNII: 4ELV7Z65AP)	
STARCH, CORN (UNII: O8232NY3SJ)	

Product Characteristics

Color	WHITE	Score	2 pieces
Shape	OVAL	Size	15mm
Flavor		Imprint Code	44;344
Contains			

Packaging

#	Item Code	Package Description	Marketing Start Date	Marketing End Date
1	NDC:0363-3440-11	1 in 1 CARTON	04/14/1998	
1		60 in 1 BOTTLE, PLASTIC; Type 0: Not a Combination Product		

Marketing Information

Marketing Category	Application Number or Monograph Citation	Marketing Start Date	Marketing End Date
OTC MONOGRAPH FINAL	part340	04/14/1998	

Labeler - Walgreen Company (008965063)

Establishment

Name	Address	ID/FEI	Business Operations
LNK International, Inc.		038154464	PACK(0363-3440)

Establishment			
Name	Address	ID/FEI	Business Operations
LNK International, Inc.		832867894	MANUFACTURE(0363-3440)

Revised: 5/2017

Walgreen Company