

**DIAZEPAM- diazepam tablet**  
**Clinical Solutions Wholesale, LLC**

-----  
**Diazepam Tablets USP CIVRx only**

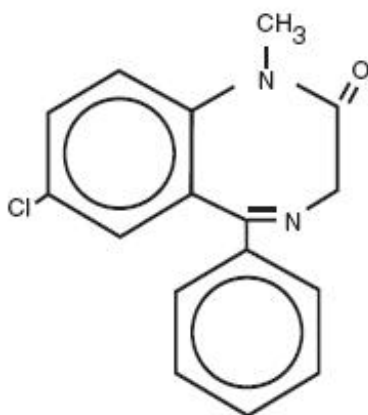
**WARNING: RISKS FROM CONCOMITANT USE WITH OPIOIDS**

Concomitant use of benzodiazepines and opioids may result in profound sedation, respiratory depression, coma, and death (see **Drug Interactions**).

- Reserve concomitant prescribing of these drugs for use in patients for whom alternative treatment options are inadequate.
- Limit dosages and durations to the minimum required.
- Follow patients for signs and symptoms of respiratory depression and sedation.

**DESCRIPTION**

Diazepam Tablets USP are a benzodiazepine derivative. Chemically, diazepam, USP is 7-chloro-1,3-dihydro-1-methyl-5-phenyl-2H-1,4-benzodiazepin-2-one. It is a colorless to light yellow crystalline compound, and is insoluble in water. Its structural formula is:



C<sub>16</sub>H<sub>13</sub>ClN<sub>2</sub>O M.W. 284.75

Diazepam Tablets USP are available as 2 mg, 5 mg, and 10 mg tablets for oral administration and contain the following inactive ingredients: anhydrous lactose, colloidal silicon dioxide; colorants: 5 mg only (D&C Yellow No. 10 aluminum lake and FD&C Yellow No. 6); 10 mg only (FD&C Blue No. 1 aluminum lake); magnesium stearate, microcrystalline cellulose, pregelatinized corn starch, and sodium starch glycolate.

**CLINICAL PHARMACOLOGY**

Diazepam is a benzodiazepine that exerts anxiolytic, sedative, muscle-relaxant, anticonvulsant and amnesic effects. Most of these effects are thought to result from a facilitation of the action of gamma aminobutyric acid (GABA), an inhibitory

neurotransmitter in the central nervous system.

## **Pharmacokinetics**

### ***Absorption***

After oral administration > 90% of diazepam is absorbed and the average time to achieve peak plasma concentrations is 1 to 1.5 hours with a range of 0.25 to 2.5 hours. Absorption is delayed and decreased when administered with a moderate fat meal. In the presence of food mean lag times are approximately 45 minutes as compared with 15 minutes when fasting. There is also an increase in the average time to achieve peak concentrations to about 2.5 hours in the presence of food as compared with 1.25 hours when fasting. This results in an average decrease in  $C_{max}$  of 20% in addition to a 27% decrease in AUC (range 15% to 50%) when administered with food.

### ***Distribution***

Diazepam and its metabolites are highly bound to plasma proteins (diazepam 98%). Diazepam and its metabolites cross the blood-brain and placental barriers and are also found in breast milk in concentrations approximately one tenth of those in maternal plasma (days 3 to 9 post-partum). In young healthy males, the volume of distribution at steady-state is 0.8 to 1 L/kg. The decline in the plasma concentration-time profile after oral administration is biphasic. The initial distribution phase has a half-life of approximately 1 hour, although it may range up to > 3 hours.

### ***Metabolism***

Diazepam is N-demethylated by CYP3A4 and 2C19 to the active metabolite N-desmethyldiazepam, and is hydroxylated by CYP3A4 to the active metabolite temazepam. N-desmethyldiazepam and temazepam are both further metabolized to oxazepam. Temazepam and oxazepam are largely eliminated by glucuronidation.

### ***Elimination***

The initial distribution phase is followed by a prolonged terminal elimination phase (half-life up to 48 hours). The terminal elimination half-life of the active metabolite N-desmethyldiazepam is up to 100 hours. Diazepam and its metabolites are excreted mainly in the urine, predominantly as their glucuronide conjugates. The clearance of diazepam is 20 to 30 mL/min in young adults. Diazepam accumulates upon multiple dosing and there is some evidence that the terminal elimination half-life is slightly prolonged.

## **Pharmacokinetics in Special Populations**

### ***Children***

In children 3 to 8 years old the mean half-life of diazepam has been reported to be 18 hours.

### ***Newborns***

In full term infants, elimination half-lives around 30 hours have been reported, with a longer average half-life of 54 hours reported in premature infants of 28 to 34 weeks

gestational age and 8 to 81 days post-partum. In both premature and full term infants the active metabolite desmethyldiazepam shows evidence of continued accumulation compared to children. Longer half-lives in infants may be due to incomplete maturation of metabolic pathways.

### ***Geriatric***

Elimination half-life increases by approximately 1 hour for each year of age beginning with a half-life of 20 hours at 20 years of age. This appears to be due to an increase in volume of distribution with age and a decrease in clearance. Consequently, the elderly may have lower peak concentrations, and on multiple dosing higher trough concentrations. It will also take longer to reach steady-state. Conflicting information has been published on changes of plasma protein binding in the elderly. Reported changes in free drug may be due to significant decreases in plasma proteins due to causes other than simply aging.

### ***Hepatic Insufficiency***

In mild and moderate cirrhosis, average half-life is increased. The average increase has been variously reported from 2 fold to 5 fold, with individual half-lives over 500 hours reported. There is also an increase in volume of distribution, and average clearance decreases by almost half. Mean half-life is also prolonged with hepatic fibrosis to 90 hours (range 66 to 104 hours), with chronic active hepatitis to 60 hours (range 26 to 76 hours), and with acute viral hepatitis to 74 hours (range 49 to 129). In chronic active hepatitis, clearance is decreased by almost half.

## **INDICATIONS AND USAGE**

Diazepam Tablets are indicated for the management of anxiety disorders or for the short-term relief of the symptoms of anxiety. Anxiety or tension associated with the stress of everyday life usually does not require treatment with an anxiolytic.

In acute alcohol withdrawal, Diazepam Tablets may be useful in the symptomatic relief of acute agitation, tremor, impending or acute delirium tremens and hallucinosis.

Diazepam Tablets are a useful adjunct for the relief of skeletal muscle spasm due to reflex spasm to local pathology (such as inflammation of the muscles or joints, or secondary to trauma), spasticity caused by upper motor neuron disorders (such as cerebral palsy and paraplegia), athetosis, and stiff-man syndrome.

Oral diazepam may be used adjunctively in convulsive disorders, although it has not proved useful as the sole therapy.

The effectiveness of Diazepam Tablets in long-term use, that is, more than 4 months, has not been assessed by systematic clinical studies. The physician should periodically reassess the usefulness of the drug for the individual patient.

## **CONTRAINDICATIONS**

Diazepam Tablets are contraindicated in patients with a known hypersensitivity to diazepam and, because of lack of sufficient clinical experience, in pediatric patients under 6 months of age. Diazepam Tablets are also contraindicated in patients with

myasthenia gravis, severe respiratory insufficiency, severe hepatic insufficiency, and sleep apnea syndrome. They may be used in patients with open-angle glaucoma who are receiving appropriate therapy, but are contraindicated in acute narrow-angle glaucoma.

## **WARNINGS**

Concomitant use of benzodiazepines, including diazepam, and opioids may result in profound sedation, respiratory depression, coma, and death. Because of these risks, reserve concomitant prescribing of these drugs for use in patients for whom alternative treatment options are inadequate.

Observational studies have demonstrated that concomitant use of opioid analgesics and benzodiazepines increases the risk of drug-related mortality compared to use of opioids alone. If a decision is made to prescribe diazepam concomitantly with opioids, prescribe the lowest effective dosages and minimum durations of concomitant use, and follow patients closely for signs and symptoms of respiratory depression and sedation. In patients already receiving an opioid analgesic, prescribe a lower initial dose of diazepam than indicated in the absence of an opioid and titrate based on clinical response. If an opioid is initiated in a patient already taking diazepam, prescribe a lower initial dose of the opioid and titrate based upon clinical response.

Advise both patients and caregivers about the risks of respiratory depression and sedation when diazepam is used with opioids. Advise patients not to drive or operate heavy machinery until the effects of concomitant use with the opioid have been determined (see **Drug Interactions**).

Diazepam is not recommended in the treatment of psychotic patients and should not be employed instead of appropriate treatment.

Since diazepam has a central nervous system depressant effect, patients should be advised against the simultaneous ingestion of alcohol and other CNS-depressant drugs during diazepam therapy.

As with other agents that have anticonvulsant activity, when diazepam is used as an adjunct in treating convulsive disorders, the possibility of an increase in the frequency and/or severity of grand mal seizures may require an increase in the dosage of standard anticonvulsant medication. Abrupt withdrawal of diazepam in such cases may also be associated with a temporary increase in the frequency and/or severity of seizures.

## **Pregnancy**

An increased risk of congenital malformations and other developmental abnormalities associated with the use of benzodiazepine drugs during pregnancy has been suggested. There may also be non-teratogenic risks associated with the use of benzodiazepines during pregnancy. There have been reports of neonatal flaccidity, respiratory and feeding difficulties, and hypothermia in children born to mothers who have been receiving benzodiazepines late in pregnancy. In addition, children born to mothers receiving benzodiazepines on a regular basis late in pregnancy may be at some risk of experiencing withdrawal symptoms during the postnatal period.

Diazepam has been shown to be teratogenic in mice and hamsters when given orally at daily doses of 100 mg/kg or greater (approximately eight times the maximum recommended human dose [MRHD = 1 mg/kg/day] or greater on a mg/m<sup>2</sup> basis). Cleft

palate and encephalopathy are the most common and consistently reported malformations produced in these species by administration of high, maternally toxic doses of diazepam during organogenesis. Rodent studies have indicated that prenatal exposure to diazepam doses similar to those used clinically can produce long-term changes in cellular immune responses, brain neurochemistry, and behavior.

In general, the use of diazepam in women of childbearing potential, and more specifically during known pregnancy, should be considered only when the clinical situation warrants the risk to the fetus. The possibility that a woman of childbearing potential may be pregnant at the time of institution of therapy should be considered. If this drug is used during pregnancy, or if the patient becomes pregnant while taking this drug, the patient should be apprised of the potential hazard to the fetus. Patients should also be advised that if they become pregnant during therapy or intend to become pregnant they should communicate with their physician about the desirability of discontinuing the drug.

### **Labor and Delivery**

Special care must be taken when diazepam is used during labor and delivery, as high single doses may produce irregularities in the fetal heart rate and hypotonia, poor sucking, hypothermia, and moderate respiratory depression in the neonates. With newborn infants it must be remembered that the enzyme system involved in the breakdown of the drug is not yet fully developed (especially in premature infants).

### **Nursing Mothers**

Diazepam passes into breast milk. Breastfeeding is therefore not recommended in patients receiving diazepam.

## **PRECAUTIONS**

### **General**

If diazepam is to be combined with other psychotropic agents or anticonvulsant drugs, careful consideration should be given to the pharmacology of the agents to be employed - particularly with known compounds that may potentiate the action of diazepam, such as phenothiazines, narcotics, barbiturates, MAO inhibitors and other antidepressants (see **Drug Interactions**).

The usual precautions are indicated for severely depressed patients or those in whom there is any evidence of latent depression or anxiety associated with depression, particularly the recognition that suicidal tendencies may be present and protective measures may be necessary.

Psychiatric and paradoxical reactions are known to occur when using benzodiazepines (see **ADVERSE REACTIONS**). Should this occur, use of the drug should be discontinued. These reactions are more likely to occur in children and the elderly.

A lower dose is recommended for patients with chronic respiratory insufficiency, due to the risk of respiratory depression.

Benzodiazepines should be used with extreme caution in patients with a history of alcohol or drug abuse (see **DRUG ABUSE AND DEPENDENCE**).

In debilitated patients, it is recommended that the dosage be limited to the smallest effective amount to preclude the development of ataxia or oversedation (2 mg to 2.5 mg once or twice daily, initially, to be increased gradually as needed and tolerated).

Some loss of response to the effects of benzodiazepines may develop after repeated use of diazepam for a prolonged time.

### **Information for Patients**

To assure the safe and effective use of benzodiazepines, patients should be informed that, since benzodiazepines may produce psychological and physical dependence, it is advisable that they consult with their physician before either increasing the dose or abruptly discontinuing this drug. The risk of dependence increases with duration of treatment; it is also greater in patients with a history of alcohol or drug abuse.

Patients should be advised against the simultaneous ingestion of alcohol and other CNS-depressant drugs during diazepam therapy. As is true of most CNS-acting drugs, patients receiving diazepam should be cautioned against engaging in hazardous occupations requiring complete mental alertness, such as operating machinery or driving a motor vehicle.

### **Drug Interactions**

#### ***Opioids***

The concomitant use of benzodiazepines and opioids increases the risk of respiratory depression because of actions at different receptor sites in the CNS that control respiration. Benzodiazepines interact at GABA<sub>A</sub> sites and opioids interact primarily at mu receptors. When benzodiazepines and opioids are combined, the potential for benzodiazepines to significantly worsen opioid-related respiratory depression exists. Limit dosage and duration of concomitant use of benzodiazepines and opioids, and monitor patients closely for respiratory depression and sedation.

#### ***Centrally Acting Agents***

If diazepam is to be combined with other centrally acting agents, careful consideration should be given to the pharmacology of the agents employed particularly with compounds that may potentiate or be potentiated by the action of diazepam, such as phenothiazines, antipsychotics, anxiolytics/sedatives, hypnotics, anticonvulsants, narcotic analgesics, anesthetics, sedative antihistamines, narcotics, barbiturates, MAO inhibitors and other antidepressants.

#### ***Alcohol***

Concomitant use with alcohol is not recommended due to enhancement of the sedative effect.

#### ***Antacids***

Diazepam peak concentrations are 30% lower when antacids are administered concurrently. However, there is no effect on the extent of absorption. The lower peak concentrations appear due to a slower rate of absorption, with the time required to achieve peak concentrations on average 20 to 25 minutes greater in the presence of

antacids. However, this difference was not statistically significant.

### ***Compounds Which Inhibit Certain Hepatic Enzymes***

There is a potentially relevant interaction between diazepam and compounds which inhibit certain hepatic enzymes (particularly cytochrome P450 3A and 2C19). Data indicate that these compounds influence the pharmacokinetics of diazepam and may lead to increased and prolonged sedation. At present, this reaction is known to occur with cimetidine, ketoconazole, fluvoxamine, fluoxetine, and omeprazole.

### ***Phenytoin***

There have also been reports that the metabolic elimination of phenytoin is decreased by diazepam.

### **Carcinogenesis, Mutagenesis, Impairment of Fertility**

In studies in which mice and rats were administered diazepam in the diet at a dose of 75 mg/kg/day (approximately 6 and 12 times, respectively, the maximum recommended human dose [MRHD = 1 mg/kg/day] on a mg/m<sup>2</sup> basis) for 80 and 104 weeks, respectively, an increased incidence of liver tumors was observed in males of both species. The data currently available are inadequate to determine the mutagenic potential of diazepam. Reproduction studies in rats showed decreases in the number of pregnancies and in the number of surviving offspring following administration of an oral dose of 100 mg/kg/day (approximately 16 times the MRHD on a mg/m<sup>2</sup> basis) prior to and during mating and throughout gestation and lactation. No adverse effects on fertility or offspring viability were noted at a dose of 80 mg/kg/day (approximately 13 times the MRHD on a mg/m<sup>2</sup> basis).

### **Pregnancy**

*Category D* (see **WARNINGS, Pregnancy**).

### **Pediatric Use**

Safety and effectiveness in pediatric patients below the age of 6 months have not been established.

### **Geriatric Use**

In elderly patients, it is recommended that the dosage be limited to the smallest effective amount to preclude the development of ataxia or oversedation (2 mg to 2.5 mg once or twice daily, initially to be increased gradually as needed and tolerated).

Extensive accumulation of diazepam and its major metabolite, desmethyl diazepam, has been noted following chronic administration of diazepam in healthy elderly male subjects. Metabolites of this drug are known to be substantially excreted by the kidney, and the risk of toxic reactions may be greater in patients with impaired renal function. Because elderly patients are more likely to have decreased renal function, care should be taken in dose selection, and it may be useful to monitor renal function.

### **Hepatic Insufficiency**

Decreases in clearance and protein binding, and increases in volume of distribution and

half-life have been reported in patients with cirrhosis. In such patients, a 2 to 5 fold increase in mean half-life has been reported. Delayed elimination has also been reported for the active metabolite desmethyldiazepam. Benzodiazepines are commonly implicated in hepatic encephalopathy. Increases in half-life have also been reported in hepatic fibrosis and in both acute and chronic hepatitis (see **CLINICAL PHARMACOLOGY, Pharmacokinetics in Special Populations, Hepatic Insufficiency**).

## **ADVERSE REACTIONS**

Side effects most commonly reported were drowsiness, fatigue, muscle weakness, and ataxia. The following have also been reported:

**Central Nervous System:** confusion, depression, dysarthria, headache, slurred speech, tremor, vertigo

**Gastrointestinal System:** constipation, nausea, gastrointestinal disturbances

**Special Senses:** blurred vision, diplopia, dizziness

**Cardiovascular System:** hypotension

**Psychiatric and Paradoxical Reactions:** stimulation, restlessness, acute hyperexcited states, anxiety, agitation, aggressiveness, irritability, rage, hallucinations, psychoses, delusions, increased muscle spasticity, insomnia, sleep disturbances, and nightmares. Inappropriate behavior and other adverse behavioral effects have been reported when using benzodiazepines. Should these occur, use of the drug should be discontinued. They are more likely to occur in children and in the elderly.

**Urogenital System:** incontinence, changes in libido, urinary retention

**Skin and Appendages:** skin reactions

**Laboratories:** elevated transaminases and alkaline phosphatase

**Other:** changes in salivation, including dry mouth, hypersalivation

Antegrade amnesia may occur using therapeutic dosages, the risk increasing at higher dosages. Amnestic effects may be associated with inappropriate behavior.

Minor changes in EEG patterns, usually low-voltage fast activity, have been observed in patients during and after diazepam therapy and are of no known significance.

Because of isolated reports of neutropenia and jaundice, periodic blood counts and liver function tests are advisable during long-term therapy.

## **Postmarketing Experience**

**Injury, Poisoning and Procedural Complications:** There have been reports of falls and fractures in benzodiazepine users. The risk is increased in those taking concomitant sedatives (including alcohol), and in the elderly.

## **DRUG ABUSE AND DEPENDENCE**

Diazepam is subject to Schedule IV control under the Controlled Substances Act of 1970. Abuse and dependence of benzodiazepines have been reported. Addiction-prone



individuals (such as drug addicts or alcoholics) should be under careful surveillance when receiving diazepam or other psychotropic agents because of the predisposition of such patients to habituation and dependence. Once physical dependence to benzodiazepines has developed, termination of treatment will be accompanied by withdrawal symptoms. The risk is more pronounced in patients on long-term therapy.

Withdrawal symptoms, similar in character to those noted with barbiturates and alcohol have occurred following abrupt discontinuance of diazepam. These withdrawal symptoms may consist of tremor, abdominal and muscle cramps, vomiting, sweating, headache, muscle pain, extreme anxiety, tension, restlessness, confusion and irritability. In severe cases, the following symptoms may occur: derealization, depersonalization, hyperacusis, numbness and tingling of the extremities, hypersensitivity to light, noise and physical contact, hallucinations or epileptic seizures. The more severe withdrawal symptoms have usually been limited to those patients who had received excessive doses over an extended period of time. Generally milder withdrawal symptoms (e.g., dysphoria and insomnia) have been reported following abrupt discontinuance of benzodiazepines taken continuously at therapeutic levels for several months. Consequently, after extended therapy, abrupt discontinuation should generally be avoided and a gradual dosage tapering schedule followed.

Chronic use (even at therapeutic doses) may lead to the development of physical dependence: discontinuation of the therapy may result in withdrawal or rebound phenomena.

**Rebound Anxiety:** A transient syndrome whereby the symptoms that led to treatment with diazepam recur in an enhanced form. This may occur upon discontinuation of treatment. It may be accompanied by other reactions including mood changes, anxiety, and restlessness.

Since the risk of withdrawal phenomena and rebound phenomena is greater after abrupt discontinuation of treatment, it is recommended that the dosage be decreased gradually.

## **OVERDOSAGE**

Overdose of benzodiazepines is usually manifested by central nervous system depression ranging from drowsiness to coma. In mild cases, symptoms include drowsiness, confusion, and lethargy. In more serious cases, symptoms may include ataxia, diminished reflexes, hypotonia, hypotension, respiratory depression, coma (rarely), and death (very rarely). Overdose of benzodiazepines in combination with other CNS depressants (including alcohol) may be fatal and should be closely monitored.

### **Management of Overdosage**

Following overdose with oral benzodiazepines, general supportive measures should be employed including the monitoring of respiration, pulse, and blood pressure. Vomiting should be induced (within 1 hour) if the patient is conscious. Gastric lavage should be undertaken with the airway protected if the patient is unconscious. Intravenous fluids should be administered. If there is no advantage in emptying the stomach, activated charcoal should be given to reduce absorption. Special attention should be paid to respiratory and cardiac function in intensive care. General supportive measures should be employed, along with intravenous fluids, and an adequate airway maintained. Should

hypotension develop, treatment may include intravenous fluid therapy, repositioning, judicious use of vasopressors appropriate to the clinical situation, if indicated, and other appropriate countermeasures. Dialysis is of limited value.

As with the management of intentional overdosage with any drug, it should be considered that multiple agents may have been ingested.

Flumazenil, a specific benzodiazepine-receptor antagonist, is indicated for the complete or partial reversal of the sedative effects of benzodiazepines and may be used in situations when an overdose with a benzodiazepine is known or suspected. Prior to the administration of flumazenil, necessary measures should be instituted to secure airway, ventilation and intravenous access. Flumazenil is intended as an adjunct to, not as a substitute for, proper management of benzodiazepine overdose. Patients treated with flumazenil should be monitored for re sedation, respiratory depression and other residual benzodiazepine effects for an appropriate period after treatment. **The prescriber should be aware of a risk of seizure in association with flumazenil treatment, particularly in long-term benzodiazepine users and in cyclic antidepressant overdose.** Caution should be observed in the use of flumazenil in epileptic patients treated with benzodiazepines. The complete flumazenil package insert, including **CONTRAINDICATIONS, WARNINGS, and PRECAUTIONS**, should be consulted prior to use.

Withdrawal symptoms of the barbiturate type have occurred after the discontinuation of benzodiazepines (see **DRUG ABUSE AND DEPENDENCE**).

## **DOSAGE AND ADMINISTRATION**

Dosage should be individualized for maximum beneficial effect. While the usual daily dosages given below will meet the needs of most patients, there will be some who may require higher doses. In such cases dosage should be increased cautiously to avoid adverse effects.

---

### **ADULTS:**

### **USUAL DAILY DOSE:**

*Management of Anxiety Disorders and Relief of Symptoms of Anxiety.*

Depending upon severity of symptoms – 2 mg to 10 mg, 2 to 4 times daily

*Symptomatic Relief in Acute Alcohol Withdrawal.*

10 mg, 3 or 4 times during the first 24 hours, reducing to 5 mg, 3 or 4 times daily as needed

*Adjunctively for Relief of Skeletal Muscle Spasm.*

2 mg to 10 mg, 3 or 4 times daily

*Adjunctively in Convulsive Disorders.*

2 mg to 10 mg, 2 to 4 times daily

*Geriatric Patients, or in the presence of debilitating disease.* 2 mg to 2.5 mg, 1 or 2 times daily initially; increase gradually as needed and tolerated

#### **PEDIATRIC PATIENTS:**

Because of varied responses to CNS-acting drugs, 1 mg to 2.5 mg, 3 or 4 times daily initiate therapy with lowest dose and increase as required. Not for use in pediatric patients under 6 months. initially; increase gradually as needed and tolerated

---

#### **HOW SUPPLIED**

Diazepam Tablets USP, 2 mg are available as white, round, flat face, beveled edge tablets, debossed "3925" and bisected on one side and "TEVA" on the other side, containing 2 mg of diazepam, USP.

1. NDC 0172- **3925**-60 2 mg packaged in bottles of 100 tablets
2. NDC 0172- **3925**-70 2 mg packaged in bottles of 500 tablets

Diazepam Tablets USP, 5 mg are available as yellow, round, flat face, beveled edge tablets, debossed "3926" and bisected on one side and "TEVA" on the other side, containing 5 mg of diazepam, USP.

1. NDC 0172- **3926**-60 5 mg packaged in bottles of 100 tablets
2. NDC 0172- **3926**-70 5 mg packaged in bottles of 500 tablets
3. NDC 0172- **3926**-80 5 mg packaged in bottles of 1000 tablets

Diazepam Tablets USP, 10 mg are available as light blue, round, flat face, beveled edge tablets, debossed "3927" and bisected on one side and "TEVA" on the other side, containing 10 mg of diazepam, USP.

1. NDC 0172- **3927**-60 10 mg packaged in bottles of 100 tablets
2. NDC 0172- **3927**-70 10 mg packaged in bottles of 500 tablets
3. NDC 0172- **3927**-80 10 mg packaged in bottles of 1000 tablets

Store at 20° to 25°C (68° to 77°F) [See USP Controlled Room Temperature].

Dispense in a tight, light-resistant container as defined in the USP, with a child-resistant closure (as required).

**KEEP THIS AND ALL MEDICATIONS OUT OF THE REACH OF CHILDREN.**

Manufactured In Czech Republic By:

**Teva Czech Industries, s.r.o.**

Opava-Komarov, Czech Republic

Manufactured For:

## Teva Pharmaceuticals USA, Inc.

North Wales, PA 19454

Rev. D 3/2017

Repackaged By:

Clinical Solutions Wholesale

Franklin, TN 37067

### **MEDICATION GUIDE** **Diazepam (dye-AZ-e-pam) Tablets, C-IV**

#### **What is the most important information I should know about diazepam tablets?**

- **Diazepam tablets are a benzodiazepine medicine. Taking benzodiazepines with opioid medicines, alcohol, or other central nervous system depressants (including street drugs) can cause severe drowsiness, breathing problems (respiratory depression), coma and death.**
- **Diazepam tablets can make you sleepy or dizzy, and can slow your thinking and motor skills.**
  - Do not drive, operate heavy machinery, or do other dangerous activities until you know how diazepam tablets affect you.
  - Do not drink alcohol or take other drugs that may make you sleepy or dizzy while taking diazepam tablets without first talking to your healthcare provider. When taken with alcohol or drugs that cause sleepiness or dizziness, diazepam tablets may make your sleepiness or dizziness much worse.
- Do not take more diazepam tablets than prescribed.

#### **What are diazepam tablets?**

- Diazepam tablets are a prescription medicine used:
  - to treat anxiety disorders
  - for the short-term relief of the symptoms of anxiety
  - to relieve the symptoms of alcohol withdrawal including agitation, shakiness (tremor), sudden and severe mental or nervous system changes (delirium tremens) and seeing or hearing things that others do not see or hear (hallucinations)
  - along with other medicines for the relief of muscle spasms
  - along with other medicines to treat seizure disorders
- **Diazepam tablets are a federal controlled substance (C-IV) because it can be abused or lead to dependence.** Keep diazepam tablets in a safe place to prevent misuse and abuse. Selling or giving away diazepam tablets may harm others, and is against the law. Tell your healthcare provider if you have abused or been dependent on alcohol, prescription medicines or street drugs.
- It is not known if diazepam tablets are safe and effective in children under 6 months of age.
- It is not known if diazepam tablets are safe and effective for use longer than 4

months.

**Do not take diazepam tablets if you:**

- are allergic to diazepam or any of the ingredients in diazepam tablets. See the end of this Medication Guide for a complete list of ingredients in diazepam tablets.
- have a disease that can cause muscle weakness called myasthenia gravis
- have severe breathing problems (severe respiratory insufficiency)
- have severe liver problems
- have a sleep problem called sleep apnea syndrome

**Before you take diazepam tablets, tell your healthcare provider about all of your medical conditions, including if you:**

- have or have had depression, mood problems, or suicidal thoughts or behavior
- have lung disease or breathing problems
- have liver or kidney problems
- are pregnant or plan to become pregnant. Diazepam tablets may harm your unborn baby. You and your healthcare provider should decide if you should take diazepam tablets while you are pregnant.
- are breastfeeding or plan to breastfeed. Diazepam passes into your breast milk and may harm your baby. Talk to your healthcare provider about the best way to feed your baby if you take diazepam tablets. Do not breastfeed while taking diazepam tablets.

**Tell your healthcare provider about all the medicines you take,** including prescription and over-the-counter medicines, vitamins, and herbal supplements. Taking diazepam tablets with certain other medicines can cause side effects or affect how well diazepam tablets or the other medicines work. Do not start or stop other medicines without talking to your healthcare provider.

**How should I take diazepam tablets?**

- Take diazepam tablets exactly as your healthcare provider tells you to take them. Your healthcare provider will tell you how many diazepam tablets to take and when to take them.
- Talk to your healthcare provider about slowly stopping diazepam tablets to avoid withdrawal symptoms.
- If you take too many diazepam tablets, call your healthcare provider or go to the nearest hospital emergency room right away.

**What should I avoid while taking diazepam tablets?**

- Diazepam tablets can cause you to be drowsy. Do not drive a car or operate heavy machinery until you know how diazepam tablets affect you.
- You should not drink alcohol while taking diazepam tablets. Drinking alcohol can increase your chances of having serious side effects.

**What are the possible side effects of diazepam tablets?**

**Diazepam tablets may cause serious side effects, including:**

- **See “What is the most important information I should know about diazepam tablets?”**
- **Seizures.** Taking diazepam tablets with other medicines used to treat epilepsy can cause an increase in the number or severity of grand mal seizures.
- **Withdrawal symptoms.** You may have withdrawal symptoms if you stop taking diazepam tablets suddenly. Withdrawal symptoms can be serious and include seizures. Mild withdrawal symptoms include a depressed mood and trouble sleeping. Talk to your healthcare provider about slowly stopping diazepam tablets to avoid withdrawal symptoms.
- **Like other antiepileptic drugs, diazepam tablets may cause suicidal thoughts or actions in a very small number of people, about 1 in 500.**

**Call your healthcare provider right away if you have any of these symptoms, especially if they are new, worse, or worry you:**

- |                                   |   |  |
|-----------------------------------|---|--|
| • thoughts about suicide or dying | • attempts to commit suicide                          | • new or worse depression                    |
| • new or worse anxiety            | • feeling agitated or restless                        | • panic attacks                              |
| • trouble sleeping (insomnia)     | • new or worse irritability                           | • acting aggressive, being angry, or violent |
| • acting on dangerous impulses    | • an extreme increase in activity and talking (mania) | • other unusual changes in behavior or mood  |

**How can I watch for early symptoms of suicidal thoughts and actions?**

- Pay attention to any changes, especially sudden changes, in mood, behaviors, thoughts, or feelings.
- Keep all follow-up visits with your healthcare provider as scheduled.

Call your healthcare provider between visits as needed, especially if you are worried about symptoms. Suicidal thoughts or actions can be caused by things other than medicines. If you have suicidal thoughts or actions, your healthcare provider may check for other causes.

- **Abuse and dependence.** Taking diazepam tablets can cause physical and psychological dependence. Physical and psychological dependence is not the same as drug addiction. Your healthcare provider can tell you more about the differences between physical and psychological dependence and drug addiction.

**The most common side effects of diazepam tablets include:**

- |                   |  |
|-------------------|--|
| • drowsiness      | • fatigue                                    |
| • muscle weakness | • loss of control of body movements (ataxia) |

These are not all the possible side effects of diazepam tablets. Call your doctor for medical advice about side effects. You may report side effects to FDA at 1-800-FDA-1088. You may also report side effects to Teva Pharmaceuticals USA, Inc. at 1-866-832-8537.

## How should I store diazepam tablets?

- Store diazepam tablets in a tightly closed container between 68°F to 77°F (20°C to 25°C) and out of the light.
- **Keep diazepam tablets and all medicines out of the reach of children.**

## General information about the safe and effective use of diazepam tablets.

Medicines are sometimes prescribed for purposes other than those listed in a Medication Guide. Do not use diazepam tablets for a condition for which they were not prescribed. Do not give diazepam tablets to other people, even if they have the same symptoms that you have. They may harm them. You can ask your pharmacist or healthcare provider for information about diazepam tablets that is written for health professionals.

## What are the ingredients in diazepam tablets?

**Active ingredient:** diazepam

**Inactive ingredients:** anhydrous lactose, colloidal silicon dioxide; colorants: 5 mg only (D&C Yellow No. 10 aluminum lake and FD&C Yellow No. 6); 10 mg only (FD&C Blue No. 1 aluminum lake); magnesium stearate, microcrystalline cellulose, pregelatinized corn starch, and sodium starch glycolate

Manufactured In Czech Republic By:

**Teva Czech Industries, s.r.o.**

Opava-Komarov, Czech Republic

Manufactured For:

**Teva Pharmaceuticals USA, Inc.**

North Wales, PA 19454

Iss. 3/2017

For more information, go to [www.tevagenetics.com](http://www.tevagenetics.com) or call 1-888-838-2872.

Repackaged by:

**Clinical Solutions Wholesale**

Franklin, TN 37067

**This Medication Guide has been approved by the U.S. Food and Drug Administration** Revised: March 2017

## Package/Label Display Panel

3 5811839268 6  
Rx Only - See Printed Insert for Full Prescribing Information. Store at 20° to 25°C (68° to 77°F) (See USP Controlled Room Temperature)

**CLINICAL solutions**  
WHOLESALE

**Diazepam 5mg Tablets**  
NDC: 58118-3926-8 Qty: 30

Mfg. NDC: 00172-3926-70  
Mfg. Lot #: SAMPLE123  
Mfg. By: Teva Pharmaceuticals USA Inc  
North Wales, PA, USA, 19454

IV  
GTIN: 00358118392686  
Batch #: SAMPLE456  
Exp.: 2021 Sep  
SN: YYMMDD000000

Repackaged and/or Distributed by: Clinical Solutions Wholesale, LLC  
418 Mary Lindsey Polk Drive, Ste. 519 - Franklin - TN 37067 USA L0003.C

# DIAZEPAM

diazepam tablet

## Product Information

<b>Product Type</b>	HUMAN PRESCRIPTION DRUG	<b>Item Code (Source)</b>	NDC:58118- 3926(NDC:0172-3926)
<b>Route of Administration</b>	ORAL	<b>DEA Schedule</b>	CIV

## Active Ingredient/Active Moiety

<b>Ingredient Name</b>	<b>Basis of Strength</b>	<b>Strength</b>
<b>DIAZEPAM</b> (UNII: Q3JTX2Q7TU) (DIAZEPAM - UNII:Q3JTX2Q7TU)	DIAZEPAM	5 mg

## Inactive Ingredients

<b>Ingredient Name</b>	<b>Strength</b>
<b>ANHYDROUS LACTOSE</b> (UNII: 3SY5LH9PMK)	
<b>SILICON DIOXIDE</b> (UNII: ETJ7Z6XBU4)	
<b>D&amp;C YELLOW NO. 10</b> (UNII: 35SW5USQ3G)	
<b>FD&amp;C YELLOW NO. 6</b> (UNII: H77VEI93A8)	
<b>MAGNESIUM STEARATE</b> (UNII: 70097M6I30)	
<b>MICROCRYSTALLINE CELLULOSE</b> (UNII: OP1R32D61U)	
<b>STARCH, CORN</b> (UNII: O8232NY3SJ)	
<b>SODIUM STARCH GLYCOLATE TYPE A POTATO</b> (UNII: 5856J3G2A2)	

## Product Characteristics

<b>Color</b>	yellow	<b>Score</b>	2 pieces
<b>Shape</b>	ROUND	<b>Size</b>	8mm
<b>Flavor</b>		<b>Imprint Code</b>	3926;TEVA
<b>Contains</b>			

## Packaging

#	Item Code	Package Description	Marketing Start Date	Marketing End Date
1	NDC:58118- 3926-8	30 in 1 BLISTER PACK; Type 0: Not a Combination Product	08/01/2019	

## Marketing Information

<b>Marketing Category</b>	<b>Application Number or Monograph Citation</b>	<b>Marketing Start Date</b>	<b>Marketing End Date</b>
ANDA	ANDA071321	08/01/2019	

**Labeler** - Clinical Solutions Wholesale, LLC (078710347)



---

**Registrant** - Clinical Solutions Wholesale, LLC (078710347)**Establishment**

<b>Name</b>	<b>Address</b>	<b>ID/FEI</b>	<b>Business Operations</b>
Clinical Solutions Wholesale, LLC		078710347	repack(58118-3926)

Revised: 1/2024

Clinical Solutions Wholesale, LLC