

SABAL SERRUALATA- saw palmetto pellet
Boiron

Disclaimer: This homeopathic product has not been evaluated by the Food and Drug Administration for safety or efficacy. FDA is not aware of scientific evidence to support homeopathy as effective.

Sabal serrulata 3C

Sabal serrulata 3C

(**contains 0.443 mg of the active ingredient per pellet)

Overactive bladder*

Stop use and ask a doctor if symptoms persist for more than 3 days or worsen

If pregnant or breast-feeding ask a health professional before use

Keep out of reach of children

Do not use if pellet dispenser seal is broken.

Contains approx 80 pellets.

How to dispense pellets? Turn tube upside down. Twist until 5 pellets are dispensed into cap. Carefully remove the cap and use it to pour pellets under the tongue.

*CLAIMS BASED ON TRADITIONAL HOMEOPATHIC PRACTICE NOT ACCEPTED MEDICAL EVIDENCE. NOT FDA EVALUATED.

*C,K,CK, and X are homeopathic dilutions: see BoironUSA.com/info for details.

lactose, sucrose

Adults and children: At the onset of symptoms, dissolve 5 pellets under the tongue 3 times a day until symptoms are relieved or as directed by a doctor.

1-800-BOIRON-1 (1-800-264-7661),

BoironUSA.com Info@boiron.com

Distributed by Boiron, Inc. Newtown Square, PA 19073

Sabal serrulata

3^c

HPUS NDC 0220-4506-41

BOIRON®
HOMEOPATHIC MEDICINE **Made in France**

Sabal serr

***CLAIMS BASED ON TRADITION
NOT ACCEPTED MEDICAL EVIDENCE**

Overactive bladder.*

ulata 3 c

VAL HOMEOPATHIC PRACTICE,
JENCE. NOT FDA EVALUATED.



Lot:

Exp:

3

06960

64504

7

Contains approx. 80 pellets.

US

Peel for Drugs Facts and instructions for use.

Drug Facts

Active ingredient:** See product name on front panel (contains 0.443 mg of the active ingredient per pellet).

Uses: See symptoms on front panel.

Warnings: Stop use and ask a doctor if symptoms persist for more than 3 days or worsen. If pregnant or breastfeeding, ask a health professional before use. Keep out of reach of children.

Directions: ■ Adults and children: At the onset of symptoms, dissolve 5 pellets under the tongue 3 times a day until symptoms are relieved or as directed by a doctor.

Other information: ■ Do not use if pellet dispenser seal is broken.

Drug Facts (continued)

Inactive ingredients: lactose, sucrose

Questions or comments?

BoironUSA.com Info@Boiron.com

1-800-BOIRON-1 (1-800-264-7661)

**C, K, CK, and X are homeopathic dilutions: see
BoironUSA.com/info for details.

Distributed by Boiron Inc.

Newtown Square, PA 19073

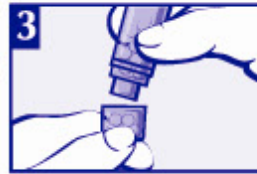
How to
dispense pellets?



Turn tube upside
down.



Twist until 5 pellets
are dispensed
into cap.



Carefully remove cap
and use it to pour pellets
under the tongue.

SABAL SERRUALATA

saw palmetto pellet

Product Information

Product Type	HUMAN OTC DRUG	Item Code (Source)	NDC:0220-4506
Route of Administration	ORAL		

Active Ingredient/Active Moiety

Ingredient Name	Basis of Strength	Strength
SAW PALMETTO (UNII: J7WWH9M8QS) (SAW PALMETTO - UNII:J7WWH9M8QS)	SAW PALMETTO	3 [hp_C] in 3 [hp_C]

Inactive Ingredients

Ingredient Name	Strength
LACTOSE, UNSPECIFIED FORM (UNII: J2B2A4N98G)	
SUCROSE (UNII: C151H8M554)	

Product Characteristics

Color	white	Score	
Shape	ROUND	Size	4mm

Flavor		Imprint Code	
Contains			
Packaging			
#	Item Code	Package Description	Marketing Start Date
1	NDC:0220-4506-41	3 [hp_C] in 1 TUBE; Type 0: Not a Combination Product	03/03/1983
Marketing Information			
Marketing Category		Application Number or Monograph Citation	Marketing Start Date
unapproved homeopathic			03/03/1983

Labeler - Boiron (282560473)

Registrant - Boiron, Inc. (014892269)

Establishment			
Name	Address	ID/FEI	Business Operations
Boiron		282560473	manufacture(0220-4506)