

**RUTA GRAVEOLENS- ruta graveolens flowering top pellet  
Boiron**

*Disclaimer: This homeopathic product has not been evaluated by the Food and Drug Administration for safety or efficacy. FDA is not aware of scientific evidence to support homeopathy as effective.*

-----

**Ruta graveolens 30C**

Ruta graveolens 30C

(\*\*contains 0.443 mg of the active ingredient per pellet)

Eye strain due to computer use or artificial lights\*

Stop use and ask a doctor if symptoms persist for more than 3 days or worsen

If pregnant or breast-feeding ask a health professional before use

Keep out of reach of children

Do not use if pellet dispenser seal is broken.

Contains approx 80 pellets.

How to dispense pellets? Turn tube upside down. Twist until 5 pellets are dispensed into cap. Carefully remove the cap and use it to pour pellets under the tongue.

\*CLAIMS BASED ON TRADITIONAL HOMEOPATHIC PRACTICE NOT ACCEPTED MEDICAL EVIDENCE. NOT FDA EVALUATED.

\*C,K,CK, and X are homeopathic dilutions: see [BoironUSA.com/info](http://BoironUSA.com/info) for details.

lactose, sucrose

Adults and children: At the onset of symptoms, dissolve 5 pellets under the tongue 3 times a day until symptoms are relieved or as directed by a doctor.

1-800-BOIRON-1 (1-800-264-7661),

[BoironUSA.com](http://BoironUSA.com) [Info@boiron.com](mailto:Info@boiron.com)

Distributed by Boiron, Inc. Newtown Square, PA 19073



Eye strain due to computer use or  
artificial lights.\*



Lot:

Exp:

3

06960

64313

5

Contains approx. 80 pellets.

US

Peel for Drugs Facts and instructions for use.

clens 30 c

VAL HOMEOPATHIC PRACTICE,  
JENCE. NOT FDA EVALUATED.

## Drug Facts

**Active ingredient\*\***: See product name on front panel (contains 0.443 mg of the active ingredient per pellet).

**Uses**: See symptoms on front panel.

**Warnings**: Stop use and ask a doctor if symptoms persist for more than 3 days or worsen. If pregnant or breastfeeding, ask a health professional before use. Keep out of reach of children.

**Directions**: ■ Adults and children: At the onset of symptoms, dissolve 5 pellets under the tongue 3 times a day until symptoms are relieved or as directed by a doctor.

**Other information**: ■ Do not use if pellet dispenser seal is broken.

## Drug Facts (continued)

**Inactive ingredients**: lactose, sucrose

## Questions or comments?

BoironUSA.com Info@Boiron.com

1-800-BOIRON-1 (1-800-264-7661)

\*\*C, K, CK, and X are homeopathic dilutions: see  
BoironUSA.com/info for details.

Distributed by Boiron Inc.

Newtown Square, PA 19073

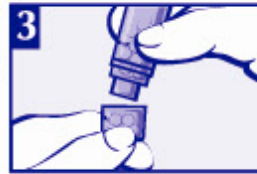
How to  
dispense pellets?



Turn tube upside  
down.



Twist until 5 pellets  
are dispensed  
into cap.



Carefully remove cap  
and use it to pour pellets  
under the tongue.

## RUTA GRAVEOLENS

ruta graveolens flowering top pellet

### Product Information

Product Type	HUMAN OTC DRUG	Item Code (Source)	NDC:0220-4467
Route of Administration	ORAL		

### Active Ingredient/Active Moiety

Ingredient Name	Basis of Strength	Strength
<b>RUTA GRAVEOLENS FLOWERING TOP</b> (UNII: N94C2U587S) (RUTA GRAVEOLENS FLOWERING TOP - UNII:N94C2U587S)	RUTA GRAVEOLENS FLOWERING TOP	30 [hp_C] in 30 [hp_C]

### Inactive Ingredients

Ingredient Name	Strength
<b>LACTOSE, UNSPECIFIED FORM</b> (UNII: J2B2A4N98G)	
<b>SUCROSE</b> (UNII: C151H8M554)	

### Product Characteristics

Color	white	Score	
Shape	ROUND	Size	4mm
Flavor		Imprint Code	

<b>Contains</b>				
<b>Packaging</b>				
#	Item Code	Package Description	Marketing Start Date	Marketing End Date
1	NDC:0220-4467-41	30 [hp_C] in 1 TUBE; Type 0: Not a Combination Product	03/03/1983	
<b>Marketing Information</b>				
Marketing Category		Application Number or Monograph Citation	Marketing Start Date	Marketing End Date
unapproved homeopathic			03/03/1983	

**Labeler -** Boiron (282560473)

**Registrant -** Boiron, Inc. (014892269)

Establishment			
Name	Address	ID/FEI	Business Operations
Boiron		282560473	manufacture(0220-4467)

Revised: 1/2023

Boiron