

**STICTA PULMONARIA- lobaria pulmonaria pellet**  
**Boiron**

*Disclaimer: This homeopathic product has not been evaluated by the Food and Drug Administration for safety or efficacy. FDA is not aware of scientific evidence to support homeopathy as effective.*

-----

**Sticta pulmonaria 15C**

Sticta pulmonaria 15C

(\*\*contains 0.443 mg of the active ingredient per pellet)

Nasal congestion with sinus pain from cold or allergy\*

Stop use and ask a doctor if symptoms persist for more than 3 days or worsen

If pregnant or breast-feeding ask a health professional before use

Keep out of reach of children

Do not use if pellet dispenser seal is broken.

Contains approx 80 pellets.

How to dispense pellets? Turn tube upside down. Twist until 5 pellets are dispensed into cap. Carefully remove the cap and use it to pour pellets under the tongue.

\*CLAIMS BASED ON TRADITIONAL HOMEOPATHIC PRACTICE NOT ACCEPTED MEDICAL EVIDENCE. NOT FDA EVALUATED.

\*C,K,CK, and X are homeopathic dilutions: see BoironUSA.com/info for details.

lactose, sucrose

Adults and children: At the onset of symptoms, dissolve 5 pellets under the tongue 3 times a day until symptoms are relieved or as directed by a doctor.

1-800-BOIRON-1 (1-800-264-7661),

BoironUSA.com Info@boiron.com

Distributed by Boiron, Inc. Newtown Square, PA 19073

**Sticta pulmonaria**

**15<sup>c</sup>**

**HPUS NDC 0220-4748-41**

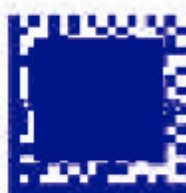
**BOIRON®**  
**HOMEOPATHIC MEDICINE**    **Made in France**

Nasal congestion with sinus pain from

Sticta pulmoi

\*CLAIMS BASED ON TRADITION  
NOT ACCEPTED MEDICAL EVIDENCE

Nasal congestion with sinus pain from cold or allergy.\*



Lot:

Exp:

3

06960

70312

9

Contains approx. 80 pellets.

US

Peel for Drugs Facts and instructions for use.

narria 15 c

AL HOMEOPATHIC PRACTICE,  
ENCE. NOT FDA EVALUATED.

## Drug Facts

**Active ingredient\*\*:** See product name on front panel (contains 0.443 mg of the active ingredient per pellet).

**Uses:** See symptoms on front panel.

**Warnings:** Stop use and ask a doctor if symptoms persist for more than 3 days or worsen. If pregnant or breastfeeding, ask a health professional before use. Keep out of reach of children.

**Directions:** ■ Adults and children: At the onset of symptoms, dissolve 5 pellets under the tongue 3 times a day until symptoms are relieved or as directed by a doctor.

**Other information:** ■ Do not use if pellet dispenser seal is broken.

## Drug Facts (continued)

**Inactive ingredients:** lactose, sucrose

Questions or comments?

## QUESTIONS OR COMMENTS?

BoironUSA.com Info@Boiron.com

1-800-BOIRON-1 (1-800-264-7661)

\*\*C, K, CK, and X are homeopathic dilutions: see  
BoironUSA.com/info for details.

Distributed by Boiron Inc.

Newtown Square, PA 19073

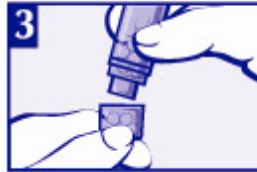
How to  
dispense pellets?



Turn tube upside  
down.



Twist until 5 pellets  
are dispensed  
into cap.



Carefully remove cap  
and use it to pour pellets  
under the tongue.

## STICTA PULMONARIA

lobaria pulmonaria pellet

### Product Information

Product Type	HUMAN OTC DRUG	Item Code (Source)	NDC:0220-4748
Route of Administration	ORAL		

### Active Ingredient/Active Moiety

Ingredient Name	Basis of Strength	Strength
LOBARIA PULMONARIA (UNII: D1YM0P5Z2T) (LOBARIA PULMONARIA - UNII:D1YM0P5Z2T)	LOBARIA PULMONARIA	15 [hp_C] in 15 [hp_C]

### Inactive Ingredients

Ingredient Name	Strength
SUCROSE (UNII: C151H8M554)	
LACTOSE, UNSPECIFIED FORM (UNII: J2B2A4N98G)	

### Product Characteristics

Color	white	Score	
Shape	ROUND	Size	4mm

<b>Flavor</b>		<b>Imprint Code</b>	
<b>Contains</b>			
<b>Packaging</b>			
<b>#</b>	<b>Item Code</b>	<b>Package Description</b>	<b>Marketing Start Date</b>
1	NDC:0220-4748-41	15 [hp_C] in 1 TUBE; Type 0: Not a Combination Product	03/03/1983
<b>Marketing Information</b>			
<b>Marketing Category</b>		<b>Application Number or Monograph Citation</b>	<b>Marketing Start Date</b>
unapproved homeopathic			03/03/1983

**Labeler -** Boiron (282560473)

**Registrant -** Boiron, Inc. (014892269)

Establishment			
Name	Address	ID/FEI	Business Operations
Boiron		282560473	manufacture(0220-4748)