

SAPROPTERIN DIHYDROCHLORIDE- sapropterin dihydrochloride tablet

Dr. Reddys Laboratories Inc.

HIGHLIGHTS OF PRESCRIBING INFORMATION

These highlights do not include all the information needed to use SAPROPTERIN DIHYDROCHLORIDE TABLETS and SAPROPTERIN DIHYDROCHLORIDE POWDER FOR ORAL SOLUTION safely and effectively. See full prescribing information for SAPROPTERIN DIHYDROCHLORIDE TABLETS and SAPROPTERIN DIHYDROCHLORIDE POWDER FOR ORAL SOLUTION.

SAPROPTERIN DIHYDROCHLORIDE tablets, for oral use

SAPROPTERIN DIHYDROCHLORIDE powder for oral solution

Initial U.S. Approval: 2007

RECENT MAJOR CHANGES

Warnings and Precautions

Upper Gastrointestinal Mucosal Inflammation (5.2) 12/2019

INDICATIONS AND USAGE

Sapropterin dihydrochloride is a phenylalanine hydroxylase activator indicated to reduce blood phenylalanine (Phe) levels in adult and pediatric patients one month of age and older with hyperphenylalaninemia (HPA) due to tetrahydrobiopterin- (BH4-) responsive Phenylketonuria (PKU). Sapropterin dihydrochloride is to be used in conjunction with a Phe-restricted diet. (1)

DOSAGE AND ADMINISTRATION

All patients with PKU who are being treated with sapropterin dihydrochloride should also be treated with a Phe-restricted diet, including dietary protein and Phe restriction. (2.1)

Starting Dosage

- *Pediatric patients 1 month to 6 years:* The recommended starting dose of sapropterin dihydrochloride is 10 mg/kg taken once daily. (2.1)
- *Patients 7 years and older:* The recommended starting dose of sapropterin dihydrochloride is 10 to 20 mg/kg taken once daily. (2.1)

Dosage Adjustment

- Doses of sapropterin dihydrochloride may be adjusted in the range of 5 to 20 mg/kg taken once daily. (2.1)
- Monitor blood Phe regularly, especially in pediatric patients. (2.1, 5.3)

Preparation and Administration

- Take with a meal. (2.2)
- Swallow tablets whole or after mixing in a small amount of soft foods or dissolving in recommended liquid. Swallow oral solution after mixing powder in a small amount of soft foods or dissolving in recommended liquids. See full prescribing information for complete information on mixing with food or liquid. (2.2)

DOSAGE FORMS AND STRENGTHS

- Tablets: 100 mg sapropterin dihydrochloride. (3)
- Powder for Oral Solution: 100 mg and 500 mg sapropterin dihydrochloride. (3)

CONTRAINDICATIONS

None. (4)

WARNINGS AND PRECAUTIONS

- Hypersensitivity reactions including anaphylaxis: Sapropterin dihydrochloride is not recommended in patients with a history of anaphylaxis to sapropterin dihydrochloride; discontinue treatment in patients who experience anaphylaxis and initiate appropriate medical treatment. Continue dietary Phe restrictions. (5.1)
- Upper Gastrointestinal Mucosal Inflammation: Monitor patients for signs and symptoms of these conditions including esophagitis and gastritis. (5.2)
- Hypophenylalaninemia: Pediatric patients younger than 7 years treated with sapropterin dihydrochloride doses of 20 mg/kg per day are at increased risk for low levels of blood Phe compared with patients 7 years and older. (5.3)

- Monitoring Blood Phe Levels During Treatment: Ensure adequate blood Phe control and nutritional balance during treatment with sapropterin dihydrochloride. Frequent blood monitoring is recommended, especially in pediatric patients. (5.4, 2.1)
- Lack of Biochemical Response to Sapropterin Dihydrochloride Treatment: Response to sapropterin dihydrochloride treatment cannot be pre-determined by laboratory (e.g., molecular) testing and can only be determined by a therapeutic trial of sapropterin dihydrochloride. (5.5, 2.1)
- Interaction with Levodopa: Seizures, over-stimulation or irritability may occur; monitor patients for a change in neurologic status. (5.6, 7)
- Hyperactivity: Monitor patients for hyperactivity. (5.7)

-----ADVERSE REACTIONS-----

Most common adverse reactions ($\geq 4\%$) are: headache, rhinorrhea, pharyngolaryngeal pain, diarrhea, vomiting, cough, and nasal congestion. (6.1)

To report SUSPECTED ADVERSE REACTIONS, contact 1-800-983-4587, or FDA at 1-800-FDA-1088 or www.fda.gov/medwatch.

-----DRUG INTERACTIONS-----

- Inhibitors of Folate Synthesis (e.g., methotrexate, valproic acid, phenobarbital, trimethoprim): Can decrease endogenous BH₄ levels; monitor blood Phe levels more frequently and adjust sapropterin dihydrochloride dosage as needed. (7)
- Drugs Affecting Nitric Oxide-Mediated Vasorelaxation (e.g., PDE-5 inhibitors): Potential for vasorelaxation; monitor blood pressure. (7)

See 17 for PATIENT COUNSELING INFORMATION and FDA-approved patient labeling.

Revised: 9/2020

FULL PRESCRIBING INFORMATION: CONTENTS*

1 INDICATIONS AND USAGE

2 DOSAGE AND ADMINISTRATION

2.1 Dosage

2.2 Preparation and Administration Instructions

3 DOSAGE FORMS AND STRENGTHS

4 CONTRAINDICATIONS

5 WARNINGS AND PRECAUTIONS

5.1 Hypersensitivity Reactions Including Anaphylaxis

5.2 Upper Gastrointestinal Mucosal Inflammation

5.3 Hypophenylalaninemia

5.4 Monitoring Blood Phe Levels During Treatment

5.5 Lack of Biochemical Response to Sapropterin Dihydrochloride

5.6 Interaction with Levodopa

5.7 Hyperactivity

6 ADVERSE REACTIONS

6.1 Clinical Trials Experience

6.2 Postmarketing Experience

7 DRUG INTERACTIONS

8 USE IN SPECIFIC POPULATIONS

8.1 Pregnancy

8.2 Lactation

8.4 Pediatric Use

8.5 Geriatric Use

10 OVERDOSAGE

11 DESCRIPTION

12 CLINICAL PHARMACOLOGY

12.1 Mechanism of Action

12.2 Pharmacodynamics

12.3 Pharmacokinetics

13 NONCLINICAL TOXICOLOGY

13.1 Carcinogenesis, Mutagenesis, Impairment of Fertility

14 CLINICAL STUDIES

16 HOW SUPPLIED/STORAGE AND HANDLING

17 PATIENT COUNSELING INFORMATION

* Sections or subsections omitted from the full prescribing information are not listed.

FULL PRESCRIBING INFORMATION

1 INDICATIONS AND USAGE

Sapropterin dihydrochloride tablets are indicated to reduce blood phenylalanine (Phe) levels in adult and pediatric patients one month of age and older with hyperphenylalaninemia (HPA) due to tetrahydrobiopterin- (BH₄-) responsive Phenylketonuria (PKU). Sapropterin dihydrochloride is to be used in conjunction with a Phe-restricted diet.

2 DOSAGE AND ADMINISTRATION

2.1 Dosage

Treatment with sapropterin dihydrochloride should be directed by physicians knowledgeable in the management of PKU.

All patients with PKU who are being treated with sapropterin dihydrochloride should also be treated with a Phe-restricted diet, including dietary protein and Phe restriction.

Starting Dosage

Pediatric Patients 1 month to 6 years: The recommended starting dose of sapropterin dihydrochloride is 10 mg/kg taken once daily.

Patients 7 years and older: The recommended starting dose of sapropterin dihydrochloride is 10 to 20 mg/kg taken once daily.

Dosage Adjustment (Evaluation Period)

Existing dietary protein and Phe intake should not be modified during the evaluation period.

If a 10 mg/kg per day starting dose is used, then response to therapy is determined by change in blood Phe following treatment with sapropterin dihydrochloride at 10 mg/kg per day for a period of up to 1 month. Blood Phe levels should be checked after 1 week

of sapropterin dihydrochloride treatment and periodically for up to a month. If blood Phe does not decrease from baseline at 10 mg/kg per day, the dose may be increased to 20 mg/kg per day. Patients whose blood Phe does not decrease after 1 month of treatment at 20 mg/kg per day do not show a biochemical response and treatment with sapropterin dihydrochloride should be discontinued in these patients.

If a 20 mg/kg per day starting dose is used, then response to therapy is determined by change in blood Phe following treatment with sapropterin dihydrochloride at 20 mg/kg per day for a period of 1 month. Blood Phe levels should be checked after 1 week of sapropterin dihydrochloride treatment and periodically during the first month. Treatment should be discontinued in patients who do not show a biochemical response (blood Phe does not decrease) after 1 month of treatment at 20 mg/kg per day [see *Warnings and Precautions (5.4)*].

Once responsiveness to sapropterin dihydrochloride has been established, the dosage may be adjusted within the range of 5 to 20 mg/kg per day according to biochemical response to therapy (blood Phe). Periodic blood Phe monitoring is recommended to assess blood Phe control, especially in pediatric patients [see *Warnings and Precautions (5.3)*].

2.2 Preparation and Administration Instructions

Take sapropterin dihydrochloride tablets orally with a meal, preferably at the same time each day [see *Clinical Pharmacology (12.3)*]. A missed dose should be taken as soon as possible, but two doses should not be taken on the same day.

Sapropterin Dihydrochloride Tablets

Sapropterin dihydrochloride tablets may be swallowed either as whole tablets or dissolved in 120 to 240 mL of water or apple juice and taken orally within 15 minutes of dissolution. It may take a few minutes for the tablets to dissolve. To make the tablets dissolve faster, tablets may be stirred or crushed. The tablets may not dissolve completely. Patients may see small pieces floating on top of the water or apple juice. This is normal and safe for patients to swallow. If after drinking the medicine patients still see pieces of the tablet in the container, more water or apple juice can be added to make sure all of the medicine is consumed. Sapropterin dihydrochloride tablets may also be crushed and then mixed in a small amount of soft foods such as apple sauce or pudding.

Sapropterin Dihydrochloride Powder for Oral Solution

Patients weighing greater than 10 kg

Sapropterin dihydrochloride powder for oral solution should be dissolved in 120 to 240 mL of water or apple juice and taken orally within 30 minutes of dissolution. Sapropterin dihydrochloride powder for oral solution may also be stirred in a small amount of soft foods such as apple sauce or pudding. Empty the contents of the packet(s) in water, apple juice, or a small amount of soft foods and mix thoroughly. The powder should dissolve completely.

Patients weighing 10 kg or less (use 100 mg packets)

For infants weighing 10 kg or less, sapropterin dihydrochloride powder for oral solution can be dissolved in as little as 5 mL of water or apple juice and a portion of this solution corresponding to a 10 mg/kg dose may be administered orally via an oral dosing

syringe. Table 1 provides dosing information for infants at the recommended starting dose of 10 mg/kg per day. Refer to Table 2 for dosing information at 20 mg/kg per day if dosage adjustment is needed.

Table 1: 10 mg/kg per day Dosing Table for Infants Weighing 10 kg or less

Patient Weight (kg)	Starting Dose: 10 mg/kg per day*			
	Dose (mg)	Sapropterin Dihydrochloride Powder for Oral Solution 100 mg Packets	Dilution Volume (mL) [‡]	Administered Dose volume (mL) [§]
1	10	1	10	1
2	20	1	10	2
3	30	1	10	3
4	40	1	10	4
5	50	1	10	5
6	60	1	5	3
7	70	1	5	3.5
8	80	1	5	4
9	90	1	5	4.5
10	100	1	5	5

*Starting dose for infants is 10 mg/kg per day. Dosing information for 20 mg/kg per day is provided in Table 2.

†Powder for oral solution provided in single use packets containing 100 mg sapropterin dihydrochloride per packet

‡Volume of water or apple juice to dissolve Sapropterin Dihydrochloride Powder for Oral Solution.

§Discard remainder of mixture after volume to be administered is drawn.

Table 2: 20 mg/kg per day Dosing Table for Infants Weighing 10 kg or less

Patient Weight (kg)	20 mg/kg per day			
	Dose (mg)	Sapropterin Dihydrochloride Powder for Oral Solution 100 mg Packets*	Dilution Volume (mL) [†]	Administered Dose volume (mL) [§]
1	20	1	5	1
2	40	1	5	2
3	60	1	5	3
4	80	1	5	4
5	100	1	5	5
6	120	2	5	3
7	140	2	5	3.5
8	160	2	5	4
9	180	2	5	4.5
10	200	2	5	5

*Powder for oral solution provided in single use packets containing 100 mg sapropterin dihydrochloride per packet

†Volume of water or apple juice to dissolve Sapropterin Dihydrochloride Powder for Oral Solution.

§Discard remainder of mixture after volume to be administered is drawn.

3 DOSAGE FORMS AND STRENGTHS

Sapropterin dihydrochlorid tablets are for oral use. Each tablet contains 100 mg of sapropterin dihydrochloride. Tablets are round, off-white to light yellow, mottled, and debossed with “177”.

Sapropterin dihydrochloride powder for oral solution is available as a unit dose packet containing 100 mg of sapropterin dihydrochloride and as a unit dose packet containing 500 mg of sapropterin dihydrochloride. The powder is off-white to yellow in color.

4 CONTRAINDICATIONS

None.

5 WARNINGS AND PRECAUTIONS

5.1 Hypersensitivity Reactions Including Anaphylaxis

Sapropterin dihydrochloride is not recommended in patients with a history of anaphylaxis to sapropterin dihydrochloride. Hypersensitivity reactions, including anaphylaxis and rash, have occurred [see *Adverse Reactions (6.2)*]. Signs of anaphylaxis include wheezing, dyspnea, coughing, hypotension, flushing, nausea, and rash. Discontinue treatment with sapropterin dihydrochloride in patients who experience anaphylaxis and initiate appropriate medical treatment. Continue dietary protein and Phe restriction in patients who experience anaphylaxis.

5.2 Upper Gastrointestinal Mucosal Inflammation

Gastrointestinal (GI) adverse reactions suggestive of upper GI mucosal inflammation have been reported with sapropterin dihydrochloride. Serious adverse reactions included esophagitis and gastritis [see *Adverse Reactions (6.2)*]. If left untreated, these could lead to severe sequelae including esophageal stricture, esophageal ulcer, gastric ulcer, and bleeding and such complications have been reported in patients receiving sapropterin dihydrochloride. Monitor patients for signs and symptoms of upper GI mucosal inflammation.

5.3 Hypophenylalaninemia

In clinical trials of sapropterin dihydrochloride, some PKU patients experienced hypophenylalaninemia (low blood Phe) during treatment with sapropterin dihydrochloride. In a clinical study of pediatric patients younger than 7 years old treated with sapropterin dihydrochloride 20 mg/kg per day, the incidence of

hypophenylalaninemia was higher than in clinical trials of older patients [see *Adverse Reactions (6.1)*].

5.4 Monitoring Blood Phe Levels During Treatment

Prolonged elevations of blood Phe levels in patients with PKU can result in severe neurologic damage, including severe intellectual disability, developmental delay, microcephaly, delayed speech, seizures, and behavioral abnormalities. Conversely, prolonged levels of blood Phe that are too low have been associated with catabolism and endogenous protein breakdown, which has been associated with adverse developmental outcomes. Active management of dietary Phe intake while taking sapropterin dihydrochloride is required to ensure adequate Phe control and nutritional balance. Monitor blood Phe levels during treatment to ensure adequate blood Phe level control. Frequent blood monitoring is recommended in the pediatric population [see *Dosage and Administration (2.1)*].

5.5 Lack of Biochemical Response to Sapropterin Dihydrochloride

Some patients with PKU do not show biochemical response (reduction in blood Phe) with treatment with sapropterin dihydrochloride. In two clinical trials at a sapropterin dihydrochloride dose of 20 mg/kg per day, 56% to 75% of pediatric PKU patients showed a biochemical response to sapropterin dihydrochloride, and in one clinical trial at a dose of 10 mg/kg per day, 20% of adult and pediatric PKU patients showed a biochemical response to sapropterin dihydrochloride [see *Clinical Studies (14)*].

Biochemical response to sapropterin dihydrochloride treatment cannot generally be pre-determined by laboratory testing (e.g., molecular testing), and should be determined through a therapeutic trial (evaluation) of sapropterin dihydrochloride response [see *Dosage and Administration (2.1)*].

5.6 Interaction with Levodopa

In a 10-year post-marketing safety surveillance program for a non-PKU indication using another sapropterin product, 3 patients with underlying neurological disorders experienced seizures, exacerbation of seizures, over-stimulation, and irritability during co-administration of levodopa and sapropterin. Monitor patients who are receiving levodopa for changes in neurological status during treatment with sapropterin dihydrochloride [see *Drug Interactions (7)*].

5.7 Hyperactivity

In the sapropterin dihydrochloride post-marketing safety surveillance program, 2 patients with PKU experienced hyperactivity when treated with sapropterin dihydrochloride [see *Adverse Reactions (6.2)*]. Monitor patients for hyperactivity.

6 ADVERSE REACTIONS

6.1 Clinical Trials Experience

Because clinical trials are conducted under widely varying conditions, adverse reaction

rates observed in the clinical trials of a drug cannot be directly compared to the rates in the clinical trials of another drug and may not reflect the rates observed in clinical practice.

PKU Clinical Studies

The safety of sapropterin dihydrochloride was evaluated in 7 clinical studies in patients with PKU (aged 1 month to 50 years) [see *Clinical Studies (14)*].

In Studies 1 to 4 (controlled and uncontrolled studies), 579 patients with PKU aged 4 to 49 years received sapropterin dihydrochloride in doses ranging from 5 to 20 mg/kg per day for lengths of treatment ranging from 1 to 164 weeks. The patient population was evenly distributed in gender, and approximately 95% of patients were Caucasian. The most common adverse reactions ($\geq 4\%$ of patients) were headache, rhinorrhea, pharyngolaryngeal pain, diarrhea, vomiting, cough, and nasal congestion.

The data described in Table 3 reflect exposure of 74 patients with PKU to sapropterin dihydrochloride at doses of 10 to 20 mg/kg per day for 6 to 10 weeks in two double-blind, placebo-controlled clinical trials (Studies 2 and 4).

Table 3 enumerates adverse reactions occurring in at least 4% of patients treated with sapropterin dihydrochloride in the double-blind, placebo-controlled clinical trials described above.

Table 3: Summary of Adverse Reactions Occurring in $\geq 4\%$ of Patients in Placebo-Controlled Clinical Studies with Sapropterin Dihydrochloride

MedDRA Preferred Term	Treatment	
	Sapropterin Dihydrochloride (N=74)	Placebo (N=59)
	No. Patients (%)	No. Patients (%)
Headache	11 (15)	8 (14)
Rhinorrhea	8 (11)	0
Pharyngolaryngeal pain	7(10)	1 (2)
Diarrhea	6 (8)	3 (5)
Vomiting	6 (8)	4 (7)
Cough	5 (7)	3 (5)
Nasal congestion	3 (4)	0

In open-label, uncontrolled clinical trials (Studies 1 and 3) all patients received sapropterin dihydrochloride in doses of 5 to 20 mg/kg per day, and adverse reactions were similar in type and frequency to those reported in the double-blind, placebo-controlled clinical trials [see *Clinical Studies (14)*].

In Study 5, 65 pediatric patients with PKU aged 1 month to 6 years received sapropterin dihydrochloride 20 mg/kg per day for 6 months. Adverse reactions in these patients were similar in frequency and type as those seen in other sapropterin dihydrochloride clinical trials except for an increased incidence of low Phe levels. Twenty-five percent (16 out of 65) of patients developed Phe levels below normal for age [see *Warnings and*

Precautions (5.3), Pediatric Use (8.4), and Clinical Studies (14)].

In Study 6, a long term, open-label, extension study of 111 patients aged 4 to 50 years, receiving sapropterin dihydrochloride in doses ranging from 5 to 20 mg/kg per day, adverse reactions were similar in type and frequency to those reported in the previous clinical studies. Fifty-five patients received sapropterin dihydrochloride both as dissolved and intact tablets. There were no notable differences in the incidence or severity of adverse reactions between the two methods of administration. The mean (\pm SD) exposure to sapropterin for the entire study population was 659 ± 221 days (maximum 953 days).

In Study 7, 27 pediatric patients with PKU aged 0 to 4 years received sapropterin dihydrochloride 10 mg/kg per day or 20 mg/kg per day. Adverse reactions were similar in type and frequency to those observed in other clinical trials, with the addition of rhinitis, which was reported in 2 subjects (7.4%).

Safety Experience from Clinical Studies for Non-PKU Indications

Approximately 800 healthy subjects and patients with disorders other than PKU, some of whom had underlying neurologic disorders or cardiovascular disease, have been administered a different formulation of the same active ingredient (sapropterin) in approximately 19 controlled and uncontrolled clinical trials. In these clinical trials, subjects were administered sapropterin at doses ranging from 1 to 100 mg/kg per day for lengths of exposure from 1 day to 2 years. Serious and severe adverse reactions (regardless of causality) during sapropterin administration were seizures, exacerbation of seizures [see *Warnings and Precautions (5.3)*], dizziness, gastrointestinal bleeding, post-procedural bleeding, headache, irritability, myocardial infarction, overstimulation, and respiratory failure. Common adverse reactions were headache, peripheral edema, arthralgia, polyuria, agitation, dizziness, nausea, pharyngitis, abdominal pain, upper abdominal pain, and upper respiratory tract infection.

6.2 Postmarketing Experience

The following adverse reactions have been reported during post-approval use of sapropterin dihydrochloride. Because these reactions are reported voluntarily from a population of uncertain size, it is not always possible to reliably estimate their frequency or establish a causal relationship to drug exposure.

Hypersensitivity reactions including anaphylaxis and rash: Most hypersensitivity reactions occurred within several days of initiating treatment [see *Warnings and Precautions (5.1)*].

Gastrointestinal reactions: esophagitis, gastritis, oropharyngeal pain, pharyngitis, esophageal pain, abdominal pain, dyspepsia, nausea, and vomiting [see *Warnings and Precautions (5.2)*].

Hyperactivity: Two cases have been reported. In one case, the patient received an accidental overdose of sapropterin dihydrochloride [see *Warnings and Precautions (5.6), Overdosage (10)*].

7 DRUG INTERACTIONS

Table 4 includes drugs with clinically important drug interactions when administered with

sapropterin dihydrochloride and instructions for preventing or managing them.

Table 4: Clinically Relevant Drug Interactions

Levodopa	
<i>Clinical Impact</i>	Sapropterin dihydrochloride may increase the availability of tyrosine, a precursor of levodopa. Neurologic events were reported post-marketing in patients receiving sapropterin and levodopa concomitantly for a non-PKU indication [see <i>Warnings and Precautions (5.5)</i>]
<i>Intervention</i>	Monitor patients for a change in neurologic status.
Inhibitors of Folate Synthesis (e.g., methotrexate, valproic acid, phenobarbital, trimethoprim)	
<i>Clinical Impact</i>	<i>In vitro</i> and <i>in vivo</i> nonclinical data suggest that drugs that inhibit folate synthesis may decrease the bioavailability of endogenous BH4 by inhibiting the enzyme dihydrofolate reductase, which is involved in the recycling (regeneration) of BH4. This reduction in net BH4 levels may increase Phe levels.
<i>Intervention</i>	Consider monitoring blood Phe levels more frequently during concomitant administration. An increased dosage of Sapropterin Dihydrochloride may be necessary to achieve a biochemical response.
Drugs Affecting Nitric Oxide-Mediated Vasorelaxation (e.g., PDE-5 inhibitors such as sildenafil, vardenafil, or tadalafil)	
<i>Clinical Impact</i>	Both sapropterin dihydrochloride and PDE-5 inhibitors may induce vasorelaxation. A reduction in blood pressure could occur; however, the combined use of these medications has not been evaluated in humans.
<i>Intervention</i>	Monitor blood pressure.

8 USE IN SPECIFIC POPULATIONS

8.1 Pregnancy

Pregnancy Exposure Registry

There is a pregnancy exposure registry that monitors pregnancy outcomes in women who are exposed to sapropterin dihydrochloride during pregnancy. For more information regarding the registry program call 1-800-983-4587.

Risk Summary

Available pregnancy registry data have not reported an association with sapropterin dihydrochloride and major birth defects, miscarriage, or adverse maternal or fetal

outcomes when sapropterin dihydrochloride was used during pregnancy (see *Data*).

An embryo-fetal development study with sapropterin dihydrochloride in rats using oral doses up to 3 times the maximum recommended human dose (MRHD) given during the period of organogenesis showed no effects. In a rabbit study using oral administration of sapropterin dihydrochloride during the period of organogenesis, a rare defect, holoprosencephaly, was noted at 10 times the MRHD.

All pregnancies have a background risk of major birth defects, pregnancy loss, or other adverse pregnancy outcomes. In the U.S. general population, the estimated background risk of major birth defects and miscarriage in clinically recognized pregnancies is 2 to 4% and 15 to 20%, respectively. The estimated background risk of major birth defects and miscarriage in pregnant women with PKU who maintain blood phenylalanine concentrations greater than 600 micromol/L during pregnancy is greater than the corresponding background risk for pregnant women without PKU.

Clinical Considerations

Disease-Associated Maternal and/or Embryo-Fetal Risk

Uncontrolled blood phenylalanine concentrations before and during pregnancy are associated with an increased risk of adverse pregnancy outcomes and fetal adverse effects. To reduce the risk of hyperphenylalaninemia-induced fetal adverse effects, blood phenylalanine concentrations should be maintained between 120 and 360 micromol/L during pregnancy and during the 3 months before conception [see Dosage and Administration (2.1)].

Data

Human Data

Uncontrolled Maternal PKU

Available data from the Maternal Phenylketonuria Collaborative Study on 468 pregnancies and 331 live births in PKU-affected women demonstrated that uncontrolled Phe levels above 600 micromol/L are associated with a very high incidence of neurological, cardiac, facial dysmorphism, and growth anomalies. Control of blood phenylalanine during pregnancy is essential to reduce the incidence of Phe-induced teratogenic effects.

Pregnancy Registry Data

Data from 62 live births reported 3 abnormalities at birth (one case each of microcephaly, cleft palate, and tongue tie). These outcomes were associated with Phe levels greater than 360 micromol/L during pregnancy.

Animal Data

No effects on embryo-fetal development were observed in a reproduction study in rats using oral doses of up to 400 mg/kg per day sapropterin dihydrochloride (about 3 times the MRHD of 20 mg/kg per day, based on body surface area) administered during the period of organogenesis. However, in a rabbit reproduction study, oral administration of a maximum dose of 600 mg/kg per day (about 10 times the MRHD, based on body surface area) during the period of organogenesis was associated with a non-statistically significant increase in the incidence of holoprosencephaly in two high dose-treated litters (4 fetuses), compared to one control-treated litter (1 fetus).

8.2 Lactation

Risk Summary

There are insufficient data to assess the presence of sapropterin in human milk and no data on the effects on milk production. In postmarketing pregnancy registries, a total of 16 women from both registries were identified as breastfeeding for a mean of 3.5 months. No lactation-related safety concerns were reported in infants of mothers nursing during maternal treatment with sapropterin dihydrochloride. Sapropterin is present in the milk of lactating rats following intravenous administration, but not following oral administration.

The developmental and health benefits of breastfeeding should be considered along with the mother's clinical need for sapropterin dihydrochloride and any potential adverse effects on the breastfed child from sapropterin dihydrochloride or from the underlying maternal condition.

8.4 Pediatric Use

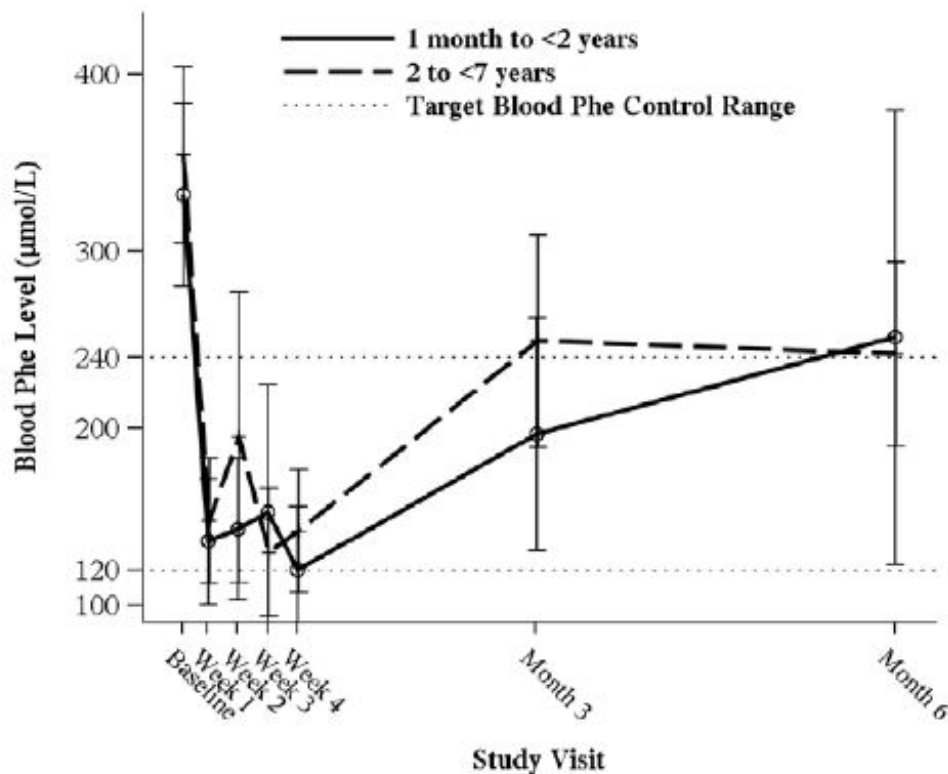
Pediatric patients with PKU, ages 1 month to 16 years, have been treated with sapropterin dihydrochloride in clinical trials [see *Clinical Studies (14)*].

The efficacy and safety of sapropterin dihydrochloride have not been established in neonates. The safety of sapropterin dihydrochloride has been established in children younger than 4 years in trials of 6 months duration and in children 4 years and older in trials of up to 3 years in length [see *Adverse Reactions (6.1)*].

In children aged 1 month and older, the efficacy of sapropterin dihydrochloride has been demonstrated in trials of 6 weeks or less in duration [see *Clinical Studies (14)*].

In a multicenter, open-label, single arm study, 57 patients aged 1 month to 6 years who were defined as sapropterin dihydrochloride responders after 4 weeks of sapropterin dihydrochloride treatment and Phe dietary restriction were treated for 6 months with sapropterin dihydrochloride at 20 mg/kg per day. The effectiveness of sapropterin dihydrochloride alone on reduction of blood Phe levels beyond 4 weeks could not be determined due to concurrent changes in dietary Phe intake during the study. Mean (\pm SD) blood Phe values over time for patients aged 1 month to <2 years and 2 to <7 years are shown in Figure 1.

Figure 1: Mean Blood Phe Level Over Time by Age (years) (N=57)



*Error bars indicate 95% confidence interval.

8.5 Geriatric Use

Clinical studies of sapropterin dihydrochloride in patients with PKU did not include patients aged 65 years and older. It is not known whether these patients respond differently than younger patients.

10 OVERDOSAGE

Two unintentional overdosages with sapropterin dihydrochloride have been reported. One adult patient in a sapropterin dihydrochloride clinical trial received a single sapropterin dihydrochloride dose of 4,500 mg (36 mg/kg) instead of 2,600 mg (20 mg/kg). The patient reported mild headache and mild dizziness immediately after taking the dose; both symptoms resolved within 1 hour with no treatment intervention. There were no associated laboratory test abnormalities. The patient suspended therapy for 24 hours and then restarted sapropterin dihydrochloride with no reports of abnormal signs or symptoms. In postmarketing, one pediatric patient received sapropterin dihydrochloride doses of 45 mg/kg per day instead of 20 mg/kg per day. The patient reported hyperactivity that began at an unspecified time after overdosage and resolved after the sapropterin dihydrochloride dose was reduced to 20 mg/kg per day.

In a clinical study to evaluate the effects of sapropterin dihydrochloride on cardiac repolarization, a single supra-therapeutic dose of 100 mg/kg (5 times the maximum recommended dose) was administered to 54 healthy adults. No serious adverse

reactions were reported during the study. The only adverse reactions reported in more than 1 subject who received the supra-therapeutic dose were upper abdominal pain (6%) and dizziness (4%). A dose-dependent shortening of the QT interval was observed [see *Clinical Pharmacology* (12.2)].

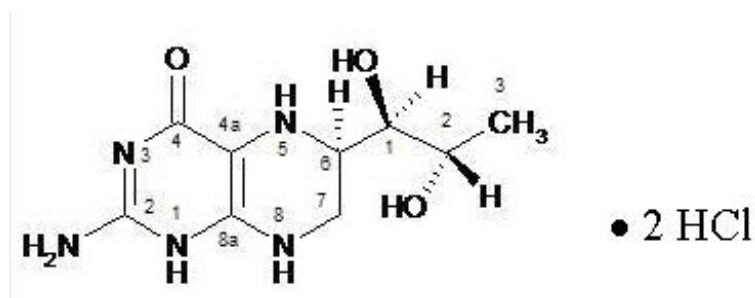
Patients should be advised to notify their physicians in cases of overdose.

11 DESCRIPTION

Sapropterin dihydrochloride tablets is an orally administered Phenylalanine Hydroxylase activator (or PAH activator). Sapropterin dihydrochloride, the active pharmaceutical ingredient in sapropterin dihydrochloride tablets and sapropterin dehydrochloride powder for oral solution, is a synthetic preparation of the dihydrochloride salt of naturally occurring tetrahydrobiopterin (BH₄). Sapropterin dihydrochloride is an off-white to light yellow crystals or crystalline powder.

The chemical name of sapropterin dihydrochloride is (6R)-2-amino-6-[(1R,2S)-1,2-dihydroxypropyl]-5,6,7,8-tetrahydro-4(1H)-pteridinone dihydrochloride and the molecular formula is C₉H₁₅N₅O₃·2HCl with a molecular weight of 314.17.

Sapropterin dihydrochloride has the following structural formula:



Sapropterin dihydrochloride is supplied as tablets and powder for oral solution containing 100 mg of sapropterin dihydrochloride (equivalent to 76.8 mg of sapropterin base). Sapropterin dihydrochloride is also supplied as powder for oral solution containing 500 mg of sapropterin dihydrochloride (equivalent to 384 mg of sapropterin base).

Tablets are round, off-white to light yellow, mottled, and debossed with "177". Each tablet contains the following inactive ingredients: ascorbic acid (USP), crospovidone (NF), dibasic calcium phosphate (USP), D-mannitol (USP), riboflavin (USP), and sodium stearyl fumarate (NF).

Sapropterin dihydrochloride powder for oral solution is off-white to yellow in color. Each unit dose packet contains the following inactive ingredients: ascorbic acid (USP), D-mannitol (USP), potassium citrate (USP), and sucralose (NF). Ingredients: ascorbic acid (USP), D-mannitol (USP), potassium citrate (USP), and sucralose (NF).

12 CLINICAL PHARMACOLOGY

12.1 Mechanism of Action

Sapropterin dihydrochloride is a synthetic form of BH₄, the cofactor for the enzyme phenylalanine hydroxylase (PAH). PAH hydroxylates Phe through an oxidative reaction to form tyrosine. In patients with PKU, PAH activity is absent or deficient. Treatment with BH₄ can activate residual PAH enzyme activity, improve the normal oxidative metabolism of Phe, and decrease Phe levels in some patients.

12.2 Pharmacodynamics

In PKU patients who are responsive to BH₄ treatment, blood Phe levels decrease within 24 hours after a single administration of sapropterin dihydrochloride, although maximal effect on Phe level may take up to a month, depending on the patient. A single daily dose of sapropterin dihydrochloride is adequate to maintain stable blood Phe levels over a 24-hour period. Twelve patients with blood Phe levels ranging from 516 to 986 micromol/L (mean 747 ± 153 micromol/L) were assessed with 24-hour blood Phe level monitoring following a daily morning dose of 10 mg/kg per day. The blood Phe level remained stable during a 24-hour observation period. No substantial increases in blood Phe levels were observed following food intake throughout the 24-hour period.

Sapropterin dihydrochloride dose-response relationship was studied in an open-label, forced titration study at doses of 5 mg/kg per day, then 20 mg/kg per day, and then 10 mg/kg per day (Study 3) [see *Clinical Studies (14.1)*]. Individual blood Phe levels were highly variable among patients. The mean blood Phe level observed at the end of each 2-week dosing period decreased as the dose of sapropterin dihydrochloride increased, demonstrating an inverse relationship between the dose of sapropterin dihydrochloride and mean blood Phe levels.

Cardiac Electrophysiology

A thorough QTc study was performed in 56 healthy adults. This randomized, placebo and active controlled crossover study was conducted to determine if a single supra-therapeutic (100 mg/kg) dose of sapropterin dihydrochloride or a single therapeutic dose (20 mg/kg) of sapropterin dihydrochloride had an effect on cardiac repolarization. In this study, sapropterin dihydrochloride was administered after dissolving tablets in water under fed condition. This study demonstrated a dose-dependent shortening of the QT interval. The maximum placebo-subtracted mean change from baseline of the QTc interval was -3.69 and -8.32 ms (lower bound of 90% CI: -5.3 and -10.6 ms) at 20 and 100 mg/kg, respectively.

12.3 Pharmacokinetics

Studies in healthy subjects have shown comparable absorption of sapropterin when tablets are dissolved in water or orange juice and taken under fasted conditions. Administration of dissolved tablets after a high-fat/high-calorie meal resulted in mean increases in C_{max} of 84% and AUC of 87% (dissolved in water). However, there was extensive variability in individual subject values for C_{max} and AUC across the different modes of administration and meal conditions. In the clinical trials of sapropterin dihydrochloride, drug was administered in the morning as a dissolved tablet without regard to meals. The mean elimination half-life in PKU patients was approximately 6.7 hours (range 3.9 to 17 hours), comparable with values seen in healthy subjects (range 3.0 to 5.3 hours).

A study in healthy adults with 10 mg/kg of sapropterin dihydrochloride demonstrated that the absorption via intact tablet administration was 40% greater than via dissolved

tablet administration under fasted conditions based on AUC_{0-t} . The administration of intact tablets under fed conditions resulted in an approximately 43% increase in the extent of absorption compared to fasted conditions based on AUC_{0-t} [see *Dosage and Administration* (2.2)].

Population pharmacokinetic analysis of sapropterin including patients from 1 month to 49 years of age showed that body weight is the only covariate substantially affecting clearance or distribution volume (see Table 5). Pharmacokinetics in patients >49 years of age have not been studied.

Table 5. Apparent Plasma Clearance by Age

Parameter	0 to <1 yr* (N=10)	1 to <6 yr* (N=57)	6 to <12 yr† (N=23)	12 to <18 yr† (N=24)	≥18 yr† (N=42)
CL/F (L/hr/kg)	81.5 ± 92.4	50.7 ± 20.1	51.7 ± 21.9	39.2 ± 9.3	37.9 ± 20.2
Mean ± SD (Median)	(53.6)	(48.4)	(47.4)	(38.3)	(31.8)

*Evaluated at 20 mg/kg per day dose

†Evaluated at 5, 10, or 20 mg/kg per day doses

Metabolism

Sapropterin is a synthetic form of tetrahydrobiopterin (BH4) and is expected to be metabolized and recycled by the same endogenous enzymes. *In vivo* endogenous BH4 is converted to quinoid dihydrobiopterin and is metabolized to dihydrobiopterin and biopterin. The enzymes dihydrofolate reductase and dihydropteridine reductase are responsible for the metabolism and recycling of BH4.

Drug Interaction Studies

Clinical Studies

In healthy subjects, administration of a single dose of sapropterin dihydrochloride at the maximum therapeutic dose of 20 mg/kg had no effect on the pharmacokinetics of a single dose of digoxin (P-gp substrate) administered concomitantly.

In Vitro Studies Where Drug Interaction Potential Was Not Further Evaluated Clinically

The potential for sapropterin to induce or inhibit cytochrome P450 enzymes was evaluated in *in vitro* studies which showed sapropterin did not inhibit CYP 1A2, 2B6, 2C8, 2C9, 2C19, 2D6, or 3A4/5, nor induce CYP 1A2, 2B6, or 3A4/5.

In vitro sapropterin did not inhibit OAT1, OAT3, OCT2, MATE1, and MATE2-K transporters. The potential for sapropterin to inhibit OATP1B1 and OATP1B3 has not been adequately studied. *In vitro*, sapropterin inhibits breast cancer resistance protein (BCRP) but the potential for a clinically significant increase in systemic exposure of BCRP substrates by sapropterin dihydrochloride appears to be low.

13 NONCLINICAL TOXICOLOGY

13.1 Carcinogenesis, Mutagenesis, Impairment of Fertility

A 2-year carcinogenicity study was conducted in F-344 rats, and a 78-week carcinogenicity study was conducted in CD-1 mice. In the 104-week oral carcinogenicity study in rats, sapropterin dihydrochloride doses of 25, 80, and 250 mg/kg per day (0.2, 0.7, and 2 times the maximum recommended human dose of 20 mg/kg per day, respectively, based on body surface area) were used. In the 78-week oral carcinogenicity study in mice, sapropterin dihydrochloride doses of 25, 80, and 250 mg/kg per day (0.1, 0.3, and 2 times the recommended human dose, respectively, based on body surface area) were used. In the 2-year rat carcinogenicity study, there was a statistically significant increase in the incidence of benign adrenal pheochromocytoma in male rats treated with the 250 mg/kg per day (about 2 times the maximum recommended human dose, based on body surface area) dose, as compared to vehicle treated rats. The mouse carcinogenicity study showed no evidence of a carcinogenic effect, but the study was not ideal due to its duration of 78 instead of 104 weeks.

Sapropterin dihydrochloride was genotoxic in the *in vitro* Ames test at concentrations of 625 mcg (TA98) and 5000 mcg (TA100) per plate, without metabolic activation. However, no genotoxicity was observed in the *in vitro* Ames test with metabolic activation. Sapropterin dihydrochloride was genotoxic in the *in vitro* chromosomal aberration assay in Chinese hamster lung cells at concentrations of 0.25 and 0.5 mM. Sapropterin dihydrochloride was not mutagenic in the *in vivo* micronucleus assay in mice at doses up to 2,000 mg/kg per day (about 8 times the maximum recommended human dose of 20 mg/kg per day, based on body surface area). Sapropterin dihydrochloride, at oral doses up to 400 mg/kg per day (about 3 times the maximum recommended human dose, based on body surface area) was found to have no effect on fertility and reproductive function of male and female rats.

14 CLINICAL STUDIES

The efficacy of sapropterin dihydrochloride was evaluated in five clinical studies in patients with PKU.

Study 1 was a multicenter, open-label, uncontrolled clinical trial of 489 patients with PKU, ages 8 to 48 years (mean 22 years), who had baseline blood Phe levels ≥ 450 micromol/L and who were not on Phe-restricted diets. All patients received treatment with sapropterin dihydrochloride 10 mg/kg per day for 8 days. For the purposes of this study, response to sapropterin dihydrochloride treatment was defined as a $\geq 30\%$ decrease in blood Phe from baseline. At Day 8, 96 patients (20%) were identified as responders.

Study 2 was a multicenter, double-blind, placebo-controlled study of 88 patients with PKU who responded to sapropterin dihydrochloride in Study 1. After a washout period from Study 1, patients were randomized equally to either sapropterin dihydrochloride 10 mg/kg per day (N=41) or placebo (N=47) for 6 weeks. Efficacy was assessed by the mean change in blood Phe level from baseline to Week 6 in the sapropterin dihydrochloride-treated group as compared to the mean change in the placebo group.

The results showed that at baseline, the mean (\pm SD) blood Phe level was 843 (\pm 300) micromol/L in the sapropterin dihydrochloride-treated group and 888 (\pm 323) micromol/L in the placebo group. At Week 6, the sapropterin

dihydrochloride treated group had a mean (\pm SD) blood Phe level of 607 (\pm 377) micromol/L, and the placebo group had a mean blood Phe level of 891 (\pm 348) micromol/L. At Week 6, the sapropterin dihydrochloride- and placebo treated groups had mean changes in blood Phe level of -239 and 6 micromol/L, respectively (mean percent changes of -29% (\pm 32) and 3% (\pm 33), respectively). The difference between the groups was statistically significant ($p < 0.001$) (Table 6).

Table 6: Blood Phe Results in Study 2

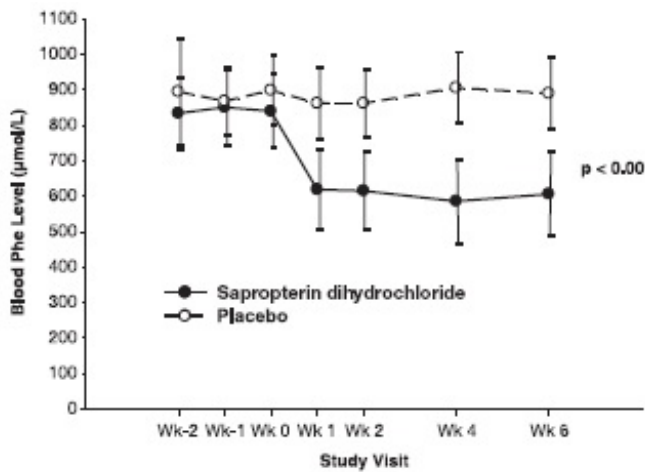
	Sapropterin (N=41)	Placebo (N=47)
Baseline Blood Phe Level* (micromol/L)		
Mean (\pm SD)	843 (\pm 300)	888 (\pm 323)
Percentiles (25 th , 75 th)	620, 990	618, 1141
Week 6 Blood Phe Level (micromol/L)		
Mean (\pm SD)	607 (\pm 377)	891 (\pm 348)
Percentiles (25 th , 75 th)	307, 812	619, 1143
Mean Change in Blood Phe From Baseline to Week 6 (micromol/L)		
Adjusted Mean (\pm SE) [†]	-239 (\pm 38)	6 (\pm 36)
Percentiles (25 th , 75 th)	-397, -92	-96, 93
Mean Percent Change in Blood Phe From Baseline to Week 6		
Mean (\pm SD)	- 29 (\pm 32)	3 (\pm 33)
Percentiles (25 th , 75 th)	-61, -11	-13, 12

*The mean baseline levels shown in this table represent the mean of 3 pretreatment levels (Wk -2, Wk -1, and Wk 0). Treatment with sapropterin dihydrochloride tablets or placebo started at Wk 0.

[†] p -value < 0.001 , adjusted mean and standard error from an ANCOVA model with change in blood Phe level from baseline to Week 6 as the response variable, and both treatment group and baseline blood Phe level as covariates.

Change in blood Phe was noted in the sapropterin dihydrochloride-treated group at Week 1 and was sustained through Week 6 (Figure 2).

Figure 2: Mean Blood Phenylalanine (Phe) Level Over Time*



*Error bars indicate 95% confidence interval.

Study 3 was a multicenter, open-label, extension study in which 80 patients who responded to sapropterin dihydrochloride treatment in Study 1 and completed Study 2 underwent 6 weeks of forced dose-titration with 3 different doses of sapropterin dihydrochloride. Treatments consisted of 3 consecutive 2-week courses of sapropterin dihydrochloride at doses of 5, then 20, and then 10 mg/kg per day. Blood Phe level was monitored after 2 weeks of treatment at each dose level. At baseline, mean (\pm SD) blood Phe was 844 (\pm 398) micromol/L. At the end of treatment with 5, 10, and 20 mg/kg per day, mean (\pm SD) blood Phe levels were 744 (\pm 384) micromol/L, 640 (\pm 382) micromol/L, and 581 (\pm 399) micromol/L, respectively (Table 7).

Table 7: Blood Phe Results From Forced Dose-Titration in Study 3

Sapropterin Dihydrochloride Dose Level (mg/kg per day)	No. of Patients	Mean (\pmSD) Blood Phe Level micromol/L)	Mean Changes (\pmSD) in Blood Phe Level From Week 0 (micromol/L)
Baseline (No Treatment)	80	844 (\pm 398)	—
5	80	744 (\pm 384)	-100 (\pm 295)
10	80	640 (\pm 382)	-204 (\pm 303)
20	80	581 (\pm 399)	-263 (\pm 318)

Study 4 was a multicenter study of 90 pediatric patients with PKU, ages 4 to 12 years, who were on Phe-restricted diets and who had blood Phe levels \leq 480 micromol/L at screening. All patients were treated with open-label sapropterin dihydrochloride 20 mg/kg per day for 8 days. Response to sapropterin dihydrochloride was defined as a \geq 30% decrease in blood Phe from baseline at Day 8. At Day 8, 50 patients (56%) had a \geq 30% decrease in blood Phe.

Study 5 was an open label, single arm, multicenter trial in 93 pediatric patients with PKU, aged 1 month to 6 years, who had Phe levels greater than or equal to 360 micromol/L at screening. All patients were treated with sapropterin dihydrochloride at 20 mg/kg per day and maintained on a Phe-restricted diet. At Week 4, 57 patients (61%) were identified as responders (defined as \geq 30% decreased in blood Phe from baseline) (see Figure 1 section 8.4).

16 HOW SUPPLIED/STORAGE AND HANDLING

Sapropterin Dihydrochloride Tablets

100 mg sapropterin dihydrochloride, are round, off-white to light yellow, mottled, and debossed with “177”. The tablets are supplied as follows:

NDC 43598-749-04 Bottle of 120 tablets

Dr. Reddy's markets only sapropterin dihydrochloride tablets.

Storage

Store sapropterin dihydrochloride tablets at 20°C to 25°C (68°F to 77°F); excursions allowed between 15°C to 30°C (59°F to 86°F) [see USP Controlled Room Temperature]. Keep container tightly closed. Protect from moisture.

Store sapropterin dihydrochloride powder for oral solution at 20°C to 25°C (68°F to 77°F); excursions allowed between 15°C to 30°C (59°F to 86°F) [see USP Controlled Room Temperature]. Protect from moisture.

17 PATIENT COUNSELING INFORMATION

Advise the patient or caregiver to read the FDA-approved patient labeling (Patient Information and Instructions for Use).

Hypersensitivity Reactions Including Anaphylaxis

Advise patients and caregivers to discontinue sapropterin dihydrochloride and contact the patient's healthcare provider immediately if they experience symptoms of anaphylaxis, including (but not limited to) wheezing, dyspnea, coughing, hypotension, flushing, nausea, and rash. Continue nutritional management including dietary protein and Phe restriction [see *Warnings and Precautions (5.1)*].

Upper Gastrointestinal Mucosal Inflammation

Advise patients and caregivers to contact their healthcare provider if the patient experiences signs and symptoms suggestive of upper GI mucosal inflammation, including nausea, vomiting, dysphagia, dyspepsia, loss of appetite; oropharyngeal, esophageal, or upper abdominal pain [see *Warnings and Precautions (5.3)*].

Hypophenylalaninemia [see *Warnings and Precautions (5.3)*]

Advise patients and caregivers that sapropterin dihydrochloride may cause hypophenylalaninemia (low blood Phe levels), especially in pediatric patients younger than 7 years of age.

Monitoring of Blood Phe Levels [see *Warnings and Precautions (5.4)*]

Advise patients and caregivers that frequent blood Phe monitoring is important to ensure blood Phe levels are in the desirable range and that they should maintain dietary protein and Phe restriction while on sapropterin dihydrochloride.

Prolonged hyperphenylalaninemia (high blood Phe levels) in patients with PKU can result in severe neurologic damage, including intellectual disability, developmental delay, microcephaly, delayed speech, seizures, and behavioral abnormalities.

Lack of Biochemical Response to Sapropterin Dihydrochloride

Some patients do not show a biochemical response (blood Phe reduction) when treated with sapropterin dihydrochloride. Advise patients and caregivers to discontinue treatment with sapropterin dihydrochloride if the patient does not show an adequate biochemical response in blood Phe after one month of treatment with sapropterin dihydrochloride 20 mg/kg per day [see *Dosage and Administration (2.1)*, *Warnings and Precautions (5.4)*].

Interaction with Levodopa

Advise patients and caregivers that patients with underlying neurological disorders taking sapropterin dihydrochloride in combination with levodopa may experience seizures, exacerbation of seizures, over-stimulation or irritability. Inform patients and caregivers to contact their healthcare provider if the patient has a change in neurologic status during treatment with sapropterin dihydrochloride [see *Warnings and Precautions (5.5)*].

Hyperactivity

Advise patients and caregivers that sapropterin dihydrochloride may cause hyperactivity and to contact their healthcare provider if the patient experiences hyperactivity, restlessness, fidgeting, or excessive talking [see *Warnings and Precautions (5.6)*].

Dosing and Monitoring [see *Dosage and Administration (2.1)*]

Advise patients and caregivers of the following:

- Sapropterin dihydrochloride should be used in conjunction with a PKU-specific diet, including dietary protein and Phe restriction.
- Dietary protein and Phe intake should not be modified during the sapropterin dihydrochloride evaluation period when assessing biochemical response.
- The patient must be evaluated for changes in blood Phe after being treated with sapropterin dihydrochloride at the recommended dose(s) for age to determine if they have a biochemical response and that blood Phe levels and dietary Phe intake should be assessed frequently during the first month of sapropterin dihydrochloride treatment.
- Monitoring of blood Phe levels is important during sapropterin dihydrochloride treatment.

Preparation and Administration [see *Dosage and Administration (2.2)*]

Advise patients and caregivers:

- Sapropterin dihydrochloride tablets can be swallowed whole, dissolved in water or apple juice, or crushed and mixed with a small amount of soft food such as apple sauce or pudding.
- Sapropterin dihydrochloride powder for oral solution should be dissolved in water or apple juice or stirred in a small amount of soft food such as apple sauce or pudding.
- Take sapropterin dihydrochloride with a meal, preferably at the same time each day.

Pregnancy

Advise patients that there is a product registry for PKU patients to collect data on women with PKU who become pregnant while receiving sapropterin dihydrochloride

treatment [see Use in Specific Populations (8.1)].

Distributed by:

Dr. Reddy's Laboratories, Inc.

Princeton, NJ 085409 USA

PATIENT INFORMATION

PATIENT INFORMATION

Sapropterin (SAP-roe-PTER-in) Dihydrochloride Tablets Sapropterin (SAP-roe-PTER-in) Dihydrochloride Powder for Oral Solution

What is sapropterin dihydrochloride ?

Sapropterin dihydrochloride is a prescription medicine used to lower blood levels of phenylalanine (Phe), in adults and children one month of age and older with a certain type of Phenylketonuria (PKU). Sapropterin dihydrochloride is used along with a Phe-restricted diet.

What should I tell my doctor before taking sapropterin dihydrochloride?

Before you take sapropterin dihydrochloride, tell your doctor about all your medical conditions, including if you:

- are allergic to sapropterin dihydrochloride or any of the ingredients in sapropterin dihydrochloride tablets and sapropterin dihydrochloride powder for oral solution. See the list of ingredients in sapropterin dihydrochloride tablets and sapropterin dihydrochloride powder for oral solution at the end of this leaflet.
- have poor nutrition or have loss of appetite.
- are pregnant or plan to become pregnant.

Pregnancy Exposure Registry: There is a pregnancy exposure registry for women who take sapropterin dihydrochloride during pregnancy. The purpose of this registry is to collect information about the health of you and your baby. Talk to your doctor about how you can take part in this registry or contact the registry program at 1-800-983-4587.

- are breastfeeding or plan to breastfeed. It is not known if sapropterin dihydrochloride passes into your breast milk. Talk to your doctor about the best way to feed your baby if you take sapropterin dihydrochloride.

Tell your doctor about all the medicines you take, including prescription and over-the-counter medicines, vitamins, herbal, and dietary supplements. Sapropterin dihydrochloride and other medicines may interact with each other.

Especially tell your doctor if you take:

- a medicine that contains levodopa
- an antifolate medicine
- sildenafil (Revatio, Viagra), tadalafil (Adcirca, Cialis), vardenafil (Staxyn, Levitra)

Tell your doctor if you are not sure if your medicine is one that is listed above.

Know the medicines you take. Keep a list of them to show your doctor and pharmacist when you get a new medicine.

How should I take sapropterin dihydrochloride?

- Take sapropterin dihydrochloride exactly as your doctor tells you. Your doctor should tell you how much sapropterin dihydrochloride to take and when to take it.
- Your doctor may change your dose of sapropterin dihydrochloride depending on how you respond to treatment.
- Take sapropterin dihydrochloride 1 time each day with a meal. It is best to take sapropterin dihydrochloride at the same time each day.
- Sapropterin dihydrochloride comes as a tablet and powder for oral solution.
 - **You can swallow sapropterin dihydrochloride tablets whole or dissolve the tablets in water or apple juice.** You may also crush the tablets and mix in a small amount of soft food, such as apple sauce or pudding before taking.
 - Be sure that you know what dose of sapropterin dihydrochloride powder your doctor prescribed and whether you should use sapropterin dihydrochloride 100 mg packets, sapropterin dihydrochloride 500 mg packets, or both types of packets to prepare your dose.
 - Open sapropterin dihydrochloride powder packets only when you are ready to use them.
 - **Sapropterin dihydrochloride powder for oral solution should be dissolved in water or apple juice.** You may also mix the powder for oral solution in a small amount of soft food, such as apple sauce or pudding before taking.
 - See the detailed “Instructions for Use” that comes with sapropterin dihydrochloride for information about the correct way to dissolve and take a dose of sapropterin dihydrochloride tablets or sapropterin dihydrochloride powder for oral solution.
- It is not possible to know if sapropterin dihydrochloride will work for you until you start taking sapropterin dihydrochloride. Your doctor will check your blood Phe levels when you start taking sapropterin dihydrochloride to see if the medicine is working.
- During treatment with sapropterin dihydrochloride:
 - Any change you make to your diet may affect your blood Phe level. Follow your doctor’s instructions carefully and do not make any changes to your dietary Phe intake without first talking with your doctor. Even if you take sapropterin dihydrochloride, if your Phe blood levels are not well controlled, you can develop severe neurologic problems.
 - Your doctor should continue to monitor your blood Phe levels often during your treatment with sapropterin dihydrochloride, **to make sure that your blood Phe levels are not too high or too low.**
 - If you have a fever, or if you are sick, your blood Phe level may go up.

Tell your doctor as soon as possible so they can change your dose of sapropterin dihydrochloride to help keep your blood Phe levels in the desired range.

- If you forget to take your dose of sapropterin dihydrochloride, take it as soon as you remember that day. Do not take 2 doses in a day.
- If you take too much sapropterin dihydrochloride, call your doctor for advice.

What are the possible side effects of sapropterin dihydrochloride? Sapropterin dihydrochloride can cause serious side effects, including:

- **Severe allergic reactions.** Stop taking sapropterin dihydrochloride and get medical help right away if you develop any of these symptoms of a severe allergic reaction:

- wheezing or trouble breathing
- coughing
- feeling lightheaded or you faint

- flushing
- nausea
- rash

- **Inflammation of the lining of the stomach (gastritis) or esophagus (esophagitis).** Gastritis or esophagitis can happen with sapropterin dihydrochloride and may be severe. **Call your doctor right away if you have any of these signs or symptoms:**
 - severe upper stomach-area (abdominal) discomfort or pain, nausea and vomiting
 - blood in your vomit or stool
 - black, tarry stools
 - difficulty swallowing
 - loss of appetite
 - pain in the throat
- **Phe levels that are too low.** Some children under the age of 7 years who take high doses of sapropterin dihydrochloride each day may experience low Phe levels.
- **Too much or constant activity (hyperactivity) can happen with sapropterin dihydrochloride.** Tell your doctor if you have any signs of hyperactivity, including:
 - fidgeting or moving around too much
 - talking too much

The most common side effects of sapropterin dihydrochloride are:

- headache
- runny nose and nasal congestion
- sore throat
- diarrhea
- vomiting
- cough

Tell your doctor if you have any side effect that bothers you or that does not go away.

These are not all the possible side effects of sapropterin dihydrochloride. For more information, ask your doctor or pharmacist. Call your doctor for medical advice about side effects. You may report side effects to FDA at 1-800-FDA-1088.

How should I store sapropterin dihydrochloride?

- Store sapropterin dihydrochloride at room temperature between 68°F to 77°F (20°C to 25°C).
- Keep sapropterin dihydrochloride tablets in the original bottle with the cap closed tightly.
- Protect from moisture.

Keep sapropterin dihydrochloride tablets and all medicines out of the reach of children.

General information about the safe and effective use of sapropterin dihydrochloride .

Medicines are sometimes prescribed for purposes other than those listed in a Patient Information leaflet. Do not use sapropterin dihydrochloride for a condition for which it was not prescribed. Do not give sapropterin dihydrochloride to other people, even if they have the same symptoms you have. It may harm them. You can ask your pharmacist or doctor for information about sapropterin dihydrochloride that is written for health professionals.

What are the ingredients in sapropterin dihydrochloride?

Active ingredient: sapropterin dihydrochloride.

Sapropterin dihydrochloride tablet inactive ingredients: ascorbic acid, crospovidone, dibasic calcium phosphate, D-mannitol, riboflavin, and sodium stearyl fumarate. Sapropterin dihydrochloride powder for oral solution inactive ingredients: ascorbic acid, D-mannitol, potassium citrate, and sucralose.

Dr. Reddy's only markets sapropterin dihydrochloride tablets.

Distributed by:

Dr. Reddy's Laboratories, Inc.

Princeton, NJ 08540 USA.

For more information, call 1-800-983-4587.

This Patient Information has been approved by the U.S. Food and Drug Administration

Issued: 09/2020

INSTRUCTIONS FOR USE

Sapropterin (SAP-roe-PTER-in) Dihydrochloride Tablets

Sapropterin (SAP-roe-PTER-in) Dihydrochloride Powder for Oral Solution

Read this Instructions for Use before you start taking sapropterin dihydrochloride and

each time you refill your prescription. There may be new information. This information does not take the place of talking with your healthcare provider about your treatment. Talk to your doctor if you have any questions about the right dose of sapropterin dihydrochloride to take or how to mix it.

Important information:

- sapropterin dihydrochloride comes as a tablet or in a packet containing powder.
- Take sapropterin dihydrochloride exactly as your doctor tells you. Your doctor should tell you how much sapropterin dihydrochloride to take and when to take it.
- Your doctor may change your dose of sapropterin dihydrochloride depending on how you respond to treatment, or based on your baby's weight.
- If your baby weighs 22 pounds or less, follow the section called "**Instructions for giving sapropterin dihydrochloride powder for oral solution (Sapropterin dihydrochloride 100 mg packets) to babies who weigh 22 pounds or less**".
- Take sapropterin dihydrochloride tablets 1 time each day with a meal. It is best to take sapropterin dihydrochloride at the same time each day.

Instructions for taking sapropterin dihydrochloride tablets:

Sapropterin dihydrochloride tablets can be swallowed whole or dissolved in water or apple juice. You may also crush the tablets and mix in a small amount of soft food, such as apple sauce or pudding.

To dissolve sapropterin dihydrochloride tablets:

- Mix sapropterin dihydrochloride tablets in 4 ounces to 8 ounces ($\frac{1}{2}$ cup to 1 cup) of water or apple juice. It may take a few minutes for the tablets to dissolve. To make the tablets dissolve faster, you can stir or crush them.
- The tablets may not dissolve completely. You may see small pieces floating on top of the water or apple juice. This is normal and safe for you to swallow.
- Drink within 15 minutes.
- After drinking your medicine, if you still see small pieces of the tablet, add more water or apple juice and drink to make sure that you take all of your medicine.

Instructions for taking sapropterin dihydrochloride powder for oral solution:

For babies who weigh 22 pounds or less, see the section below called "**Instructions for giving Sapropterin dihydrochloride powder for oral solution (Sapropterin dihydrochloride 100 mg packets) to babies who weigh 22 pounds or less.**"

Sapropterin dihydrochloride powder for oral solution should be dissolved in water or apple juice. The powder for oral solution may also be mixed in a small amount of soft foods, such as apple sauce or pudding.

To dissolve sapropterin dihydrochloride powder for oral solution:

- Be sure that you know what dose of sapropterin dihydrochloride your doctor has prescribed and whether you should use sapropterin dihydrochloride 100 mg packets, sapropterin dihydrochloride 500 mg packets, or both types of packets to prepare your dose.
- Open the packet(s) of sapropterin dihydrochloride powder for oral solution by folding and tearing, or cutting at the dotted line in the upper right corner of the packet. Open the packet(s) only when you are ready to use them.

- Empty the contents of the packet(s) into 4 ounces to 8 ounces (1/2cup to 1 cup) of water or apple juice.
- Drink within 30 minutes.

Instructions for giving Sapropterin dihydrochloride powder for oral solution (Sapropterin dihydrochloride 100 mg packets) to babies who weigh 22 pounds or less:

- The dose of sapropterin dihydrochloride is based on body weight.

This will change as your baby grows. Your doctor will tell you:

- the number of sapropterin dihydrochloride 100 mg packets needed for one dose
 - the amount of water or apple juice needed to mix one dose of sapropterin dihydrochloride
 - the amount of the mixture (powder and water or apple juice) you will need to give your baby his or her prescribed dose of medicine.
- Give your baby the prescribed amount of mixture (powder and water or apple juice) within 30 minutes after mixing. If you are not able to give your baby's dose within 30 minutes after mixing, pour the unused medicine into the trash. You will need to mix a new dose.

Supplies needed to mix and give your baby's dose of sapropterin dihydrochloride powder for oral solution:

- the number of sapropterin dihydrochloride 100 mg packets needed for one dose
- a small cup of water or apple juice
- one 30 mL medicine cup for mixing
- small spoon or clean utensil for mixing
- 10 mL oral dosing syringe
- scissors (optional)

Ask your pharmacist for a 30 mL medicine cup for mixing and an oral dosing syringe if you do not have these supplies.

Step 1: Find a clean, flat work surface.

Step 2: Place a small cup of water or apple juice, the oral dosing syringe, and an empty medicine cup on your clean, flat work surface (see Figure A).

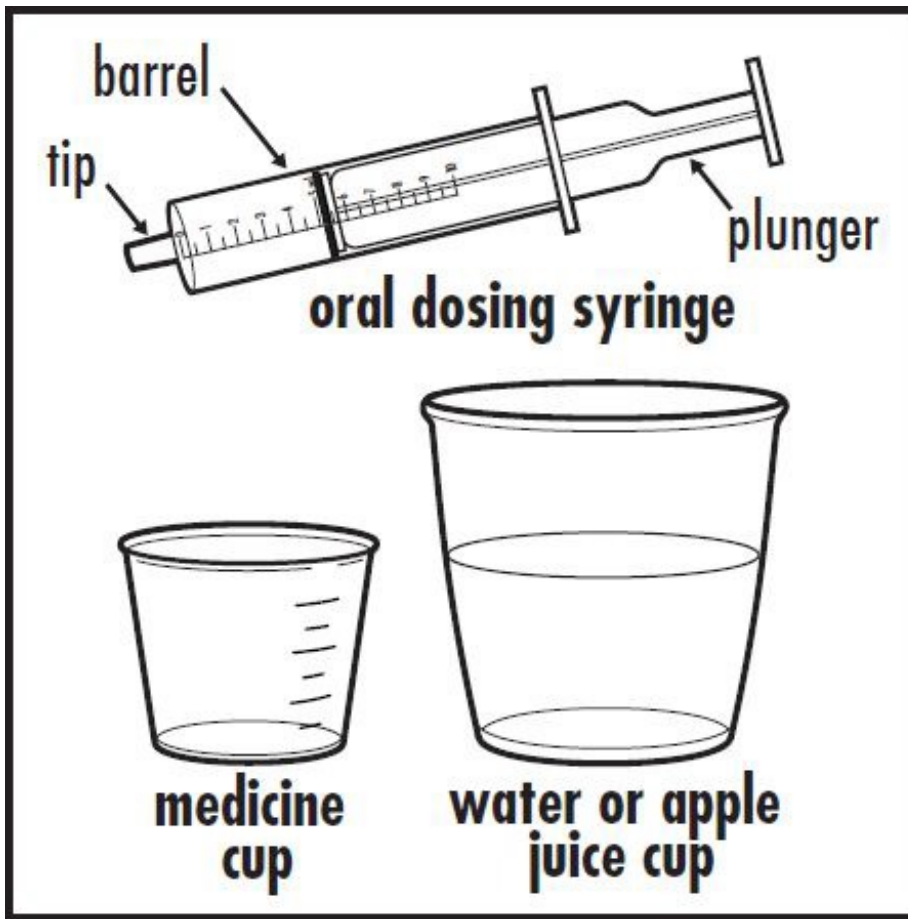


Figure A

Step 3: Pour 5 mL or 10 mL of water or apple juice from the small cup into the medicine cup, as instructed by your doctor. Check to make sure that the amount of liquid lines up with the amount that your doctor tells you (see Figure B).

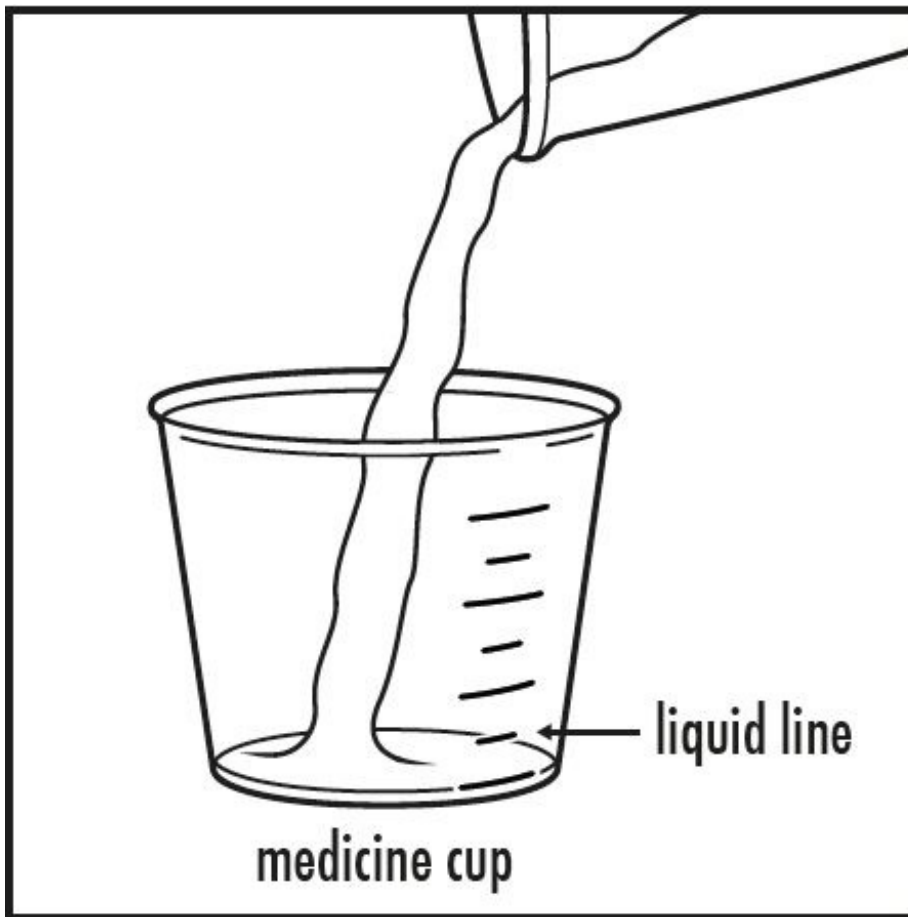


Figure B

Step 4: Check the label on the sapropterin dihydrochloride packet(s). If the packet is marked sapropterin dihydrochloride 100 mg, empty the entire contents of the sapropterin dihydrochloride packet into the medicine cup (see Figure C).



Figure C

Step 5: Stir the mixture with the small spoon or other clean utensil until all of the powder completely dissolves (see Figure D).

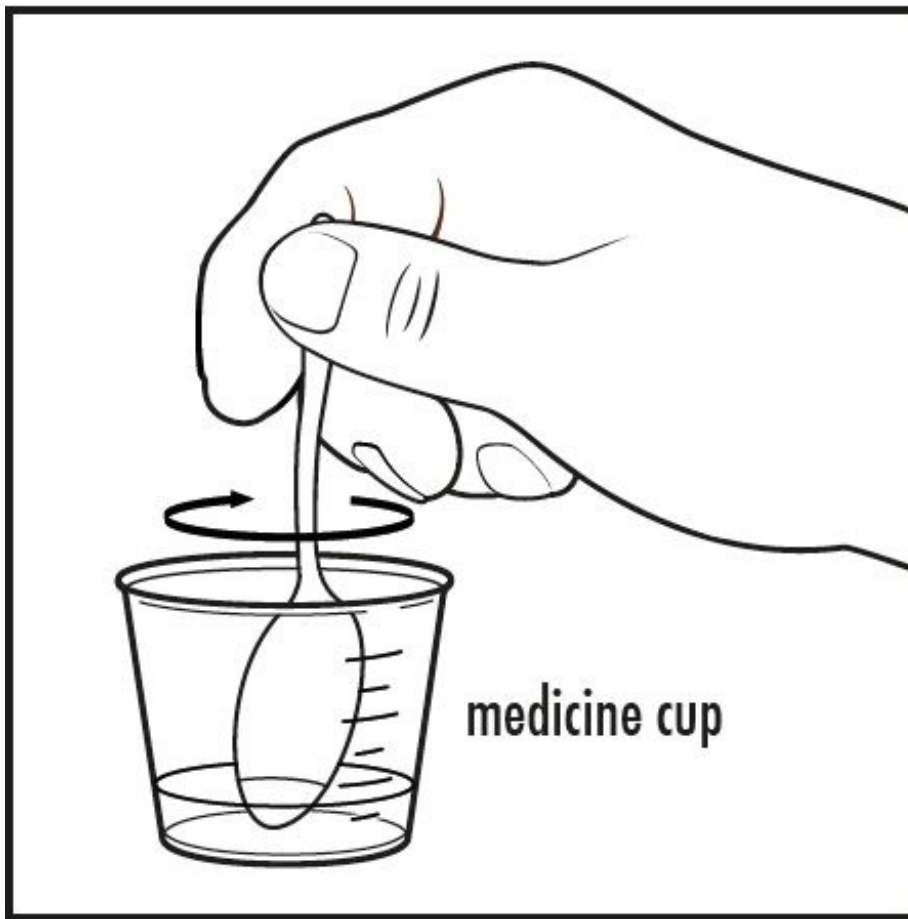


Figure D

Step 6: To give a dose of sapropterin dihydrochloride to your baby: Place the tip of the oral dosing syringe into the liquid inside the medicine cup. Pull back on the plunger and draw up the amount of the mixture prescribed by your doctor (see Figure E).

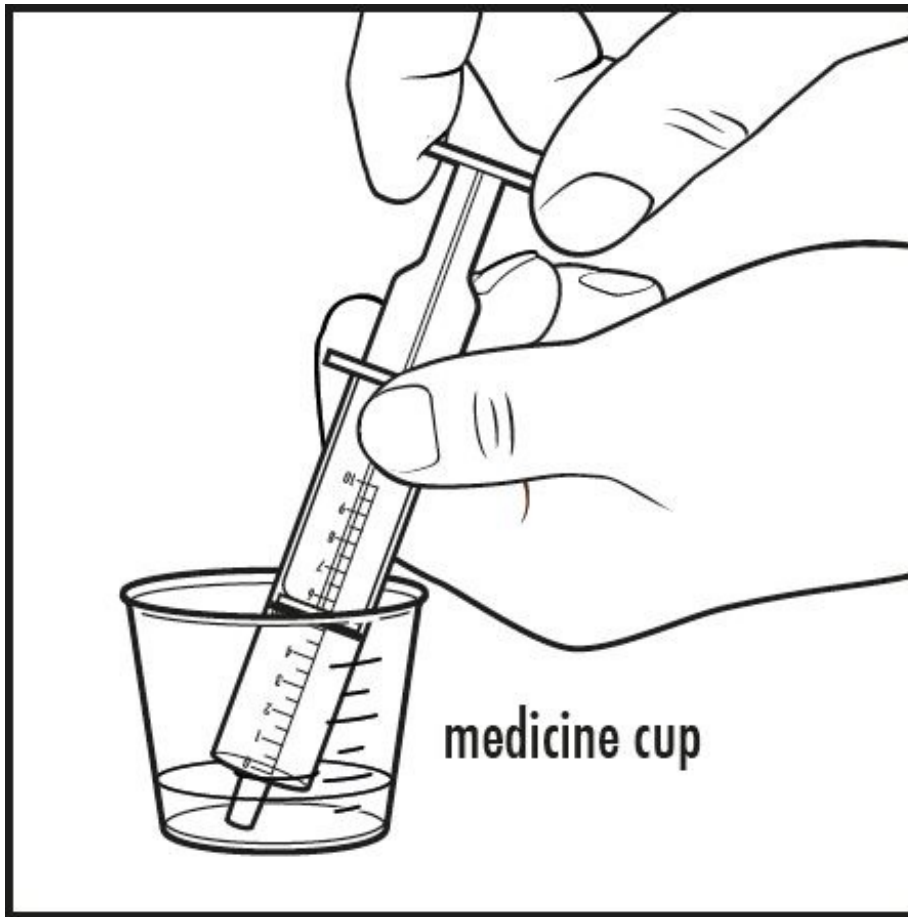


Figure E

Step 7: Take the oral dosing syringe out of the medicine cup. Carefully turn the oral dosing syringe so that the tip is pointing up. Check to make sure that the amount of medicine in the oral dosing syringe lines up with the amount of mixture prescribed by your doctor (see Figure F).

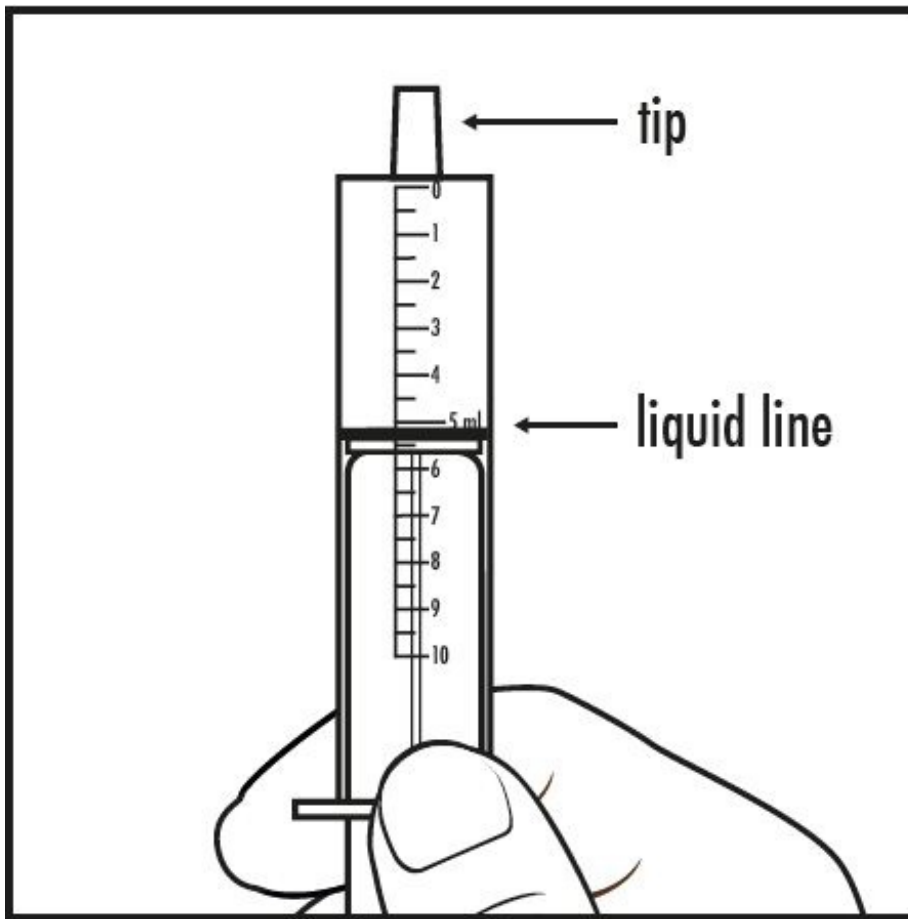


Figure F

Step 8: Place the tip of the oral dosing syringe into your baby's mouth. Point the tip of the oral dosing syringe toward either cheek (see Figure G). Push on the plunger slowly, a small amount at a time, until all of the mixture in the oral dosing syringe is given.

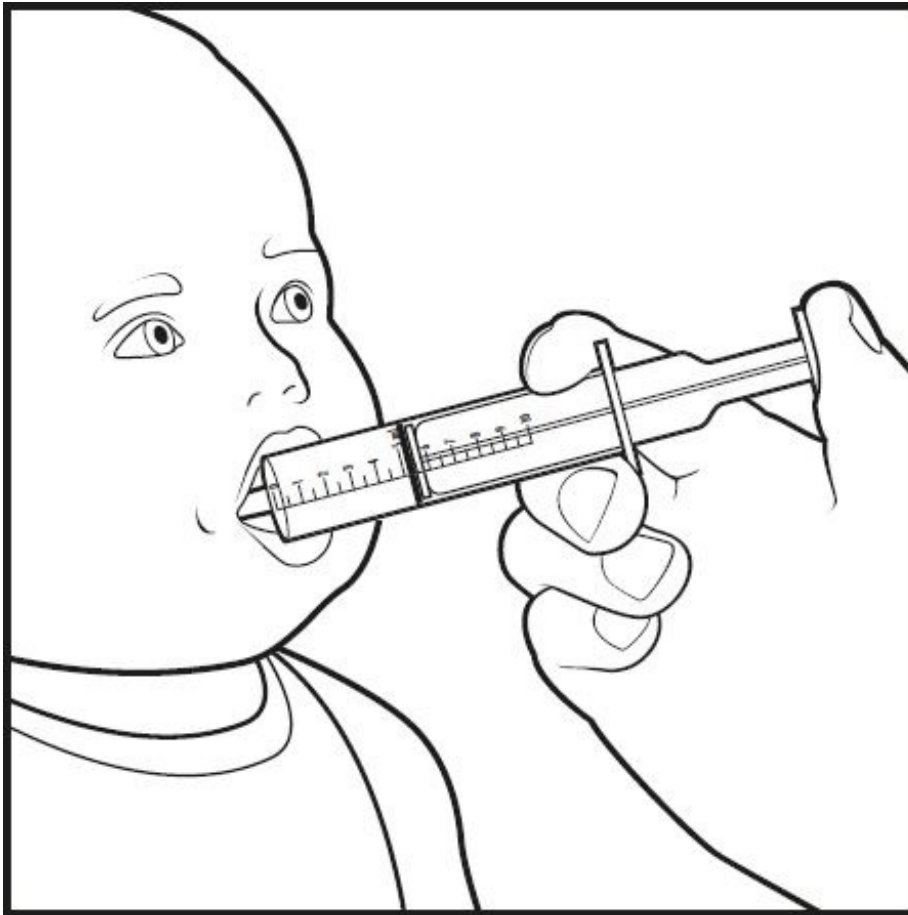


Figure G

Step 9: Throw away any remaining mixture. Remove the plunger from the barrel of the oral dosing syringe. Wash the oral dosing syringe and medicine cup with warm water and air dry. When the oral dosing syringe is dry, put the plunger back into the barrel. Store the oral dosing syringe and medicine cup for the next use.

How should I store sapropterin dihydrochloride?

- Store sapropterin dihydrochloride at room temperature between 68°F to 77°F (20°C to 25°C).
- Keep sapropterin dihydrochloride tablets in the original bottle with the cap closed tightly.
- Protect from moisture.

Keep sapropterin dihydrochloride and all medicines out of the reach of children.

Dr. Reddy's only markets sapropterin dihydrochloride tablets.

This Instructions for Use has been approved by the U.S. Food and Drug Administration.

Distributed by:

Dr. Reddy's Laboratories, Inc.

Princeton, NJ 08540 USA

Issued: 09/2020

PACKAGE LABEL PRINCIPAL DISPLAY PANEL SECTION

Container : 120s count

Store at 20°C to 25°C (68°F to 77°F); Rx Only NDC 43598-749-04
excursions allowed between
15°C to 30°C (59°F to 86°F)
[See USP Controlled Room
Temperature]
Keep container tightly closed
Protect from moisture
Usual Dosage:
See Physician Package Insert
Distributed by:
Dr. Reddy's Laboratories Inc.,
Princeton, NJ 08540 USA
I 0620

**Sapropterin
Dihydrochloride
Tablets**
100 mg*
* Equivalent to 76.8 mg
of sapropterin

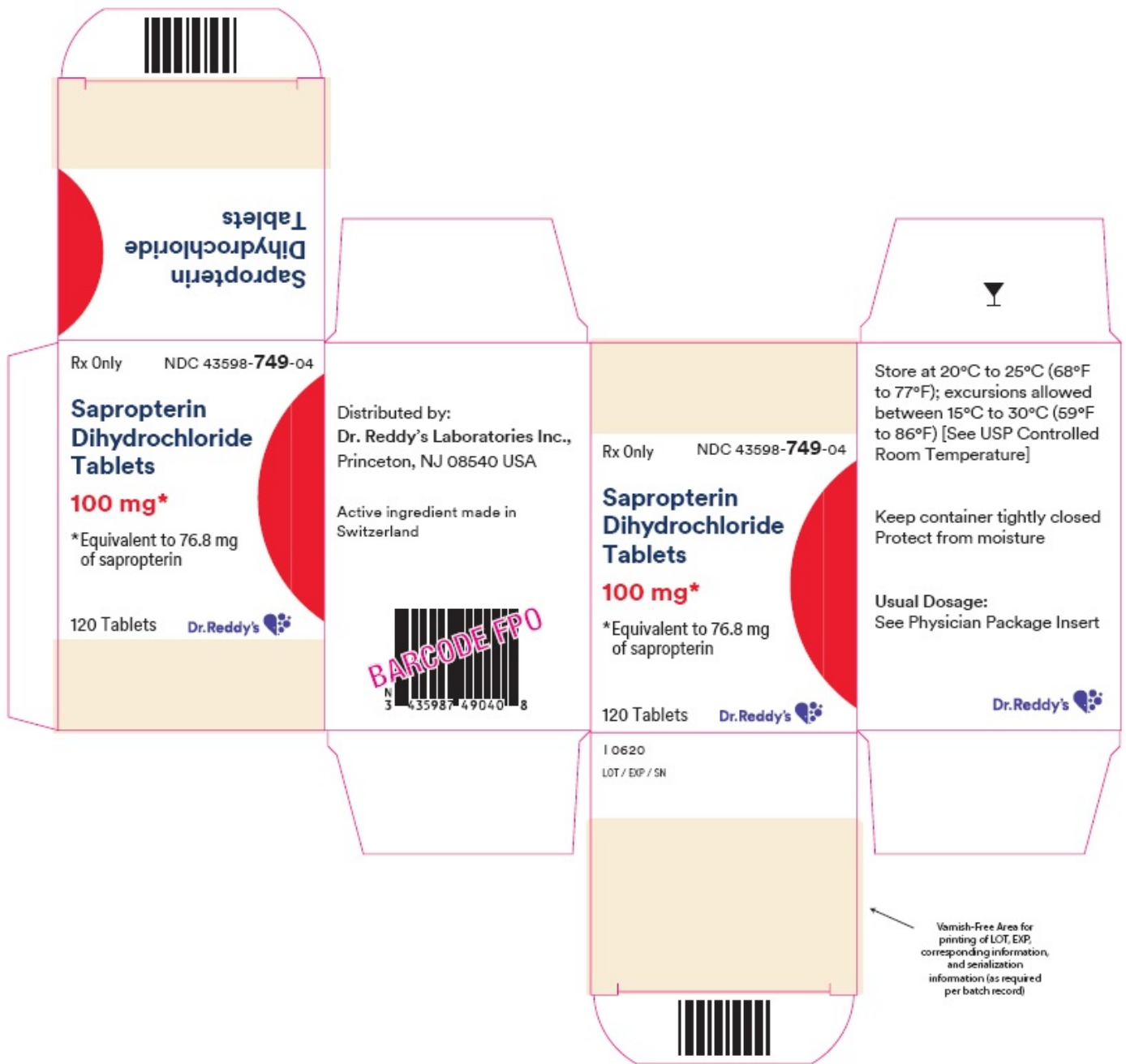
120 Tablets **Dr.Reddy's**

Lot:
Exp:

BARCODE EPO
N 3 4 35987 49040 8

Varnish-Free Area
for printing of lot
and expiry
information

Container Carton: 1 bottle in 1 carton



SAPROPTERIN DIHYDROCHLORIDE

sapropterin dihydrochloride tablet

Product Information

Product Type	HUMAN PRESCRIPTION DRUG	Item Code (Source)	NDC:43598-749
Route of Administration	ORAL		

Active Ingredient/Active Moiety

Ingredient Name	Basis of Strength	Strength
SAPROPTERIN DIHYDROCHLORIDE (UNII: RG277LF5B3) (SAPROPTERIN - UNII:EGX6574321)	SAPROPTERIN DIHYDROCHLORIDE	100 mg

Product Characteristics

Color	WHITE (off-white to light yellow)	Score	no score
Shape	ROUND	Size	10mm
Flavor		Imprint Code	177
Contains			

Packaging

#	Item Code	Package Description	Marketing Start Date	Marketing End Date
1	NDC:43598-749-04	1 in 1 CARTON	10/01/2020	
1		120 in 1 BOTTLE; Type 0: Not a Combination Product		

Marketing Information

Marketing Category	Application Number or Monograph Citation	Marketing Start Date	Marketing End Date
NDA	NDA022181	10/01/2020	

Labeler - Dr. Reddys Laboratories Inc. (802315887)

Revised: 12/2021

Dr. Reddys Laboratories Inc.