

**GOOD NEIGHBOR PHARMACY TUSSIN DM- dextromethorphan hydrobromide,
guaifenesin solution
Amerisource Bergen**

Amerisource Bergen Tussin DM Drug Facts

Active ingredients (in each 10 mL)

Dextromethorphan HBr, USP 20 mg

Guaifenesin, USP 200 mg

Purpose

Cough suppressant

Expectorant

Uses

- temporarily relieves cough due to minor throat and bronchial irritation as may occur with a cold
- helps loosen phlegm (mucus) and thin bronchial secretions to drain bronchial tubes

Warnings

Do not use

if you are now taking a prescription monoamine oxidase inhibitor (MAOI) (certain drugs for depression, psychiatric, or emotional conditions, or Parkinson's disease), or for 2 weeks after stopping the MAOI drug. If you do not know if your prescription drug contains an MAOI, ask a doctor or pharmacist before taking this product.

Ask a doctor before use if you have

- cough that occurs with too much phlegm (mucus)
- cough that lasts or is chronic such as occurs with smoking, asthma, chronic bronchitis or emphysema

Stop use and ask a doctor if

cough lasts for more than 7 days, comes back, or is accompanied by fever, rash, or persistent headache. A persistent cough may be a sign of a serious condition.

If pregnant or breast-feeding,

ask a health professional before use.

Keep out of reach of children.

In case of overdose, get medical help or contact a Poison Control Center right away (1-800-222-1222).

Directions

- do not take more than 6 doses in any 24-hour period
- measure only with dosing cup provided
- keep dosing cup with product
- mL = milliliter
- this adult product is not intended for use in children under 12 years of age

age	dose
adults and children 12 years and over	10 mL every 4 hours
children under 12 years	do not use

Other information

- **each 10 mL contains:** sodium 6 mg
- store at 20-25°C (68-77°F). Do not refrigerate.

Inactive ingredients

anhydrous citric acid, FD&C red no. 40, flavor, glycerin, high fructose corn syrup, menthol, propylene glycol, purified water, sodium benzoate, sodium citrate, sucralose

Questions or comments?

1-800-719-9260

Principal Display Panel

Compare to Robitussin[®] Cough + Chest Congestion DM active ingredients

Good neighbor pharmacy[®]

ADULT

Tussin DM

cough suppressant (dextromethorphan HBr)

expectorant (guaifenesin)

Cough & Chest Congestion

Relieves:

Cough

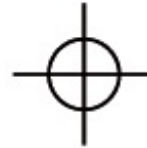
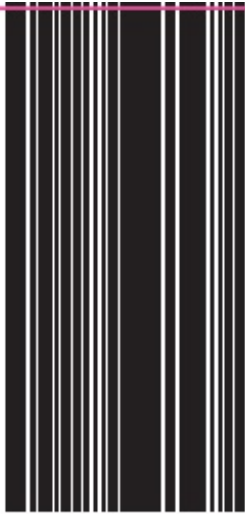
Mucus

Peak Cold

Non-Drowsy

Alcohol Free

For Ages 12 & Over



NDC 24385-359-26

Compare to
Robitussin® Cough +
Chest Congestion DM
active ingredients*



NDC 24385-359-26

Compare to
Robitussin® Cough +
Chest Congestion DM
active ingredients*



▶ ADULT

Tussin DM

cough suppressant
(dextromethorphan HBr)
expectorant (guaifenesin)

**Cough &
Chest Congestion**

Relieves:

- Cough
- Mucus

Peak Cold
Non-Drowsy

Alcohol Free
For Ages 12 & Over

4 fl oz
(118 mL)



▶ ADULT

Tussin DM

cough suppressant
(dextromethorphan HBr)
expectorant (guaifenesin)

**Cough &
Chest Congestion**

Relieves:

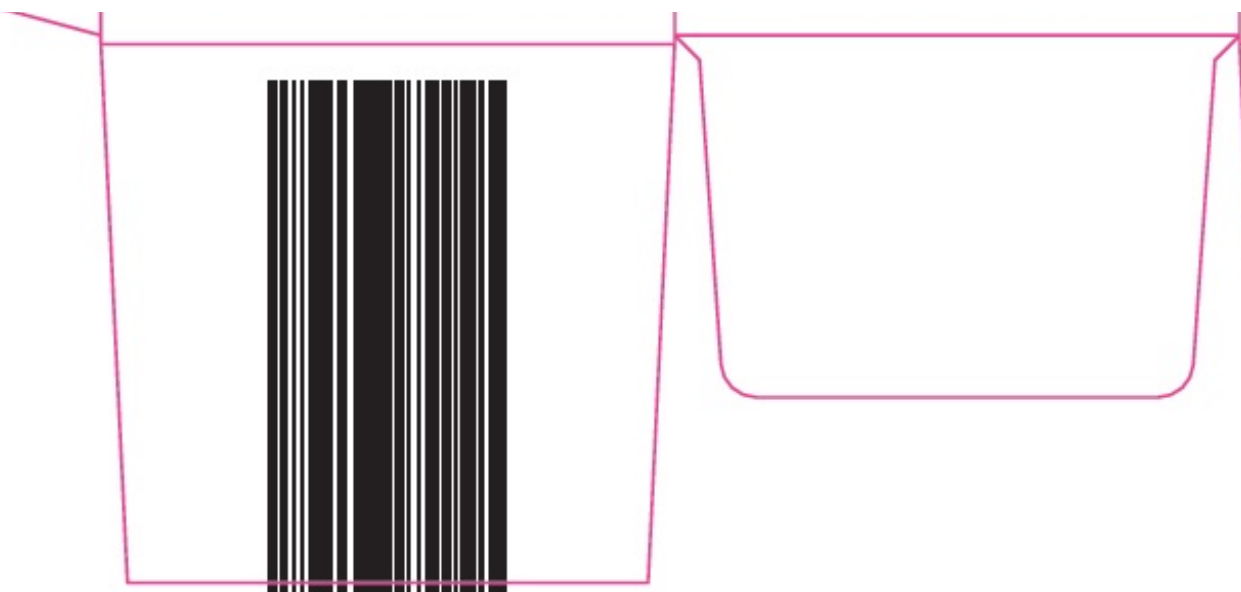
- Cough
- Mucus

Peak Cold
Non-Drowsy

Alcohol Free
For Ages 12 & Over

4 fl oz
(118 mL)





4 fl oz (118 mL)

Cough & Chest Congestion

cough suppressant
(dextromethorphan HBr)
expectorant (guaifenesin)

Tussin DM

ADULT



Drug Facts

Active ingredients (in each 10 mL) Purposes

Dextromethorphan HBr, USP 20 mg.....Cough suppressant
Guaifenesin, USP 200 mg.....Expectorant

Uses

- temporarily relieves cough due to minor throat and bronchial irritation as may occur with a cold
- helps loosen phlegm (mucus) and thin bronchial secretions to drain bronchial tubes

Warnings

Do not use if you are now taking a prescription monoamine oxidase inhibitor (MAOI) (certain drugs for depression, psychiatric, or emotional conditions, or Parkinson's disease), or for 2 weeks after stopping the MAOI drug. If you do not know if your prescription drug contains an MAOI, ask a doctor or pharmacist before taking this product.

Ask a doctor before use if you have

- cough that occurs with too much phlegm (mucus)
- cough that lasts or is chronic such as occurs with smoking, asthma, chronic bronchitis, or emphysema

Stop use and ask a doctor if cough lasts for more than 7 days, comes back, or is accompanied by fever, rash, or persistent headache. A persistent cough may be a sign of a serious condition.

If pregnant or breast-feeding, ask a health professional before use.

Keep out of reach of children. In case of overdose, get medical help or contact a Poison Control Center right away (1-800-222-1222).

Directions

- do not take more than 6 doses in any 24-hour period
- measure only with dosing cup provided
- keep dosing cup with product
- mL = milliliter
- this adult product is not intended for use in children under 12 years of age

Drug Facts (continued)

age	dose
adults and children 12 years and over	10 mL every 4 hours
children under 12 years	do not use

Other information

- each 10 mL contains: sodium 6 mg
- store at 20-25°C (68-77°F). Do not refrigerate.

Inactive ingredients anhydrous citric acid, FD&C red no. 40, flavor, glycerin, high fructose corn syrup, menthol, propylene glycol, purified water, sodium benzoate, sodium citrate, sucralose

Questions or comments?

1-800-719-9260

*Good Neighbor Pharmacy® Tussin DM is not manufactured or distributed by Pfizer, distributor of Robitussin® Cough + Chest Congestion DM.

GLUTEN FREE

Distributed By
AmerisourceBergen
1300 Morris Drive
Chesterbrook, PA 19087

Visit us at
www.goodneighborpharmacy.com

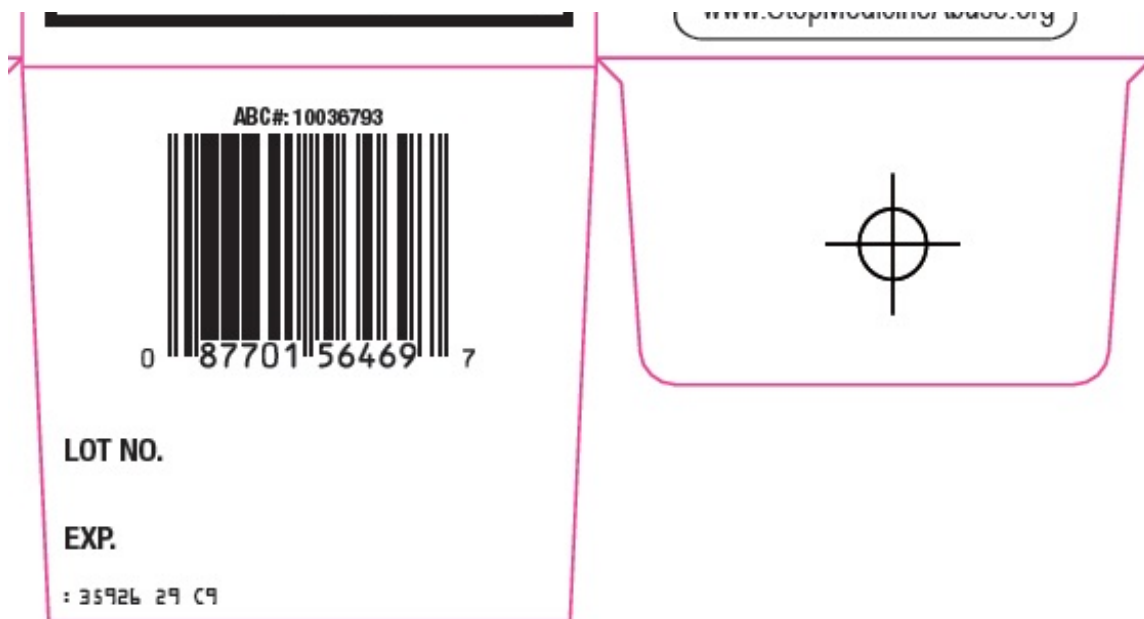


DO NOT USE IF PRINTED NECKBAND IS BROKEN OR MISSING

PARENTS:

Learn about teen medicine abuse

www.StopMedicineAbuse.org



GOOD NEIGHBOR PHARMACY TUSSIN DM

dextromethorphan hydrobromide, guaifenesin solution

Product Information

Product Type	HUMAN OTC DRUG	Item Code (Source)	NDC:24385-359
Route of Administration	ORAL		

Active Ingredient/Active Moiety

Ingredient Name	Basis of Strength	Strength
DEXTROMETHORPHAN HYDROBROMIDE (UNII: 9D2RTI9KYH) (DEXTROMETHORPHAN - UNII:7355X3ROTS)	DEXTROMETHORPHAN HYDROBROMIDE	20 mg in 10 mL
GUAIFENESIN (UNII: 495W7451VQ) (GUAIFENESIN - UNII:495W7451VQ)	GUAIFENESIN	200 mg in 10 mL

Inactive Ingredients

Ingredient Name	Strength
ANHYDROUS CITRIC ACID (UNII: XF417D3PSL)	
FD&C RED NO. 40 (UNII: WZB9127XOA)	
GLYCERIN (UNII: PDC6A3C0OX)	
HIGH FRUCTOSE CORN SYRUP (UNII: XY6UN3QB6S)	
PROPYLENE GLYCOL (UNII: 6DC9Q167V3)	
WATER (UNII: 059QF0KO0R)	
SODIUM CITRATE, UNSPECIFIED FORM (UNII: 1Q73Q2JULR)	
SODIUM BENZOATE (UNII: OJ245FE5EU)	
MENTHOL, UNSPECIFIED FORM (UNII: L7T10EIP3A)	
SUCRALOSE (UNII: 96K6UQ3ZD4)	

Product Characteristics

Color	RED (Orange-Red)	Score	
Shape		Size	
Flavor	CHERRY	Imprint Code	
Contains			

Packaging

#	Item Code	Package Description	Marketing Start Date	Marketing End Date
1	NDC:24385-359-26	1 in 1 CARTON	08/27/1991	
1		118 mL in 1 BOTTLE; Type 0: Not a Combination Product		
2	NDC:24385-359-34	1 in 1 CARTON	11/18/1991	
2		237 mL in 1 BOTTLE; Type 0: Not a Combination Product		

Marketing Information

Marketing Category	Application Number or Monograph Citation	Marketing Start Date	Marketing End Date
OTC Monograph Drug	M004	08/27/1991	

Labeler - Amerisource Bergen (007914906)

Revised: 10/2023

Amerisource Bergen