

# ZIPRASIDONE HYDROCHLORIDE- ziprasidone hydrochloride capsule

Wockhardt USA LLC.

-----

## HIGHLIGHTS OF PRESCRIBING INFORMATION

These highlights do not include all the information needed to use ZIPRASIDONE HYDROCHLORIDE CAPSULES safely and effectively. See full prescribing information for ZIPRASIDONE HYDROCHLORIDE CAPSULES.

ZIPRASIDONE hydrochloride capsules for oral use  
Initial U.S. Approval: 2001

### WARNING: INCREASED MORTALITY IN ELDERLY PATIENTS WITH DEMENTIA-RELATED PSYCHOSIS

*See full prescribing information for complete boxed warning*

- Elderly patients with dementia-related psychosis treated with antipsychotic drugs are at an increased risk of death compared to placebo treatment (5.1)
- Ziprasidone hydrochloride is not approved for elderly patients with dementia-related psychosis (5.1)

### RECENT MAJOR CHANGES

Warnings and Precautions (5.4) 8/2015

### INDICATIONS AND USAGE

Ziprasidone hydrochloride capsule is an atypical antipsychotic. In choosing among treatments, prescribers should be aware of the capacity of ziprasidone hydrochloride to prolong the QT interval and may consider the use of other drugs first (5.2) Ziprasidone hydrochloride capsule is indicated as an oral formulation for the: Treatment of schizophrenia. (1.1)

- Adults: Efficacy was established in four 4 to 6 week trials and one maintenance trial in adult patients with schizophrenia. (14.1)

### DOSAGE AND ADMINISTRATION

Give oral doses with food.

- Schizophrenia: Initiate at 20 mg twice daily. Daily dosage may be adjusted up to 80 mg twice daily. Dose adjustments should occur at intervals of not less than 2 days. Safety and efficacy has been demonstrated in doses up to 100 mg twice daily. The lowest effective dose should be used. (2.1)

### DOSAGE FORMS AND STRENGTHS

- Capsules: 20 mg, 40 mg, 60 mg, and 80 mg (3)

### CONTRAINDICATIONS

- Do not use in patients with a known history of QT prolongation (4.1)
- Do not use in patients with recent acute myocardial infarction (4.1)
- Do not use in patients with uncompensated heart failure (4.1)
- Do not use in combination with other drugs that have demonstrated QT prolongation (4.1)
- Do not use in patients with known hypersensitivity to ziprasidone (4.2)

### WARNINGS AND PRECAUTIONS

- *QT Interval Prolongation* : Ziprasidone hydrochloride use should be avoided in patients with bradycardia, hypokalemia or hypomagnesemia, congenital prolongation of the QT interval, or in combination with other drugs that have demonstrated QT prolongation. (5.2)
- *Neuroleptic Malignant Syndrome (NMS)*: Potentially fatal symptom complex has been reported with antipsychotic drugs. Manage with immediate discontinuation of drug and close monitoring. (5.3)
- *Severe Cutaneous Adverse Reactions* , such as Drug Reaction with Eosinophilia and Systemic Symptoms (DRESS) and Stevens-Johnson syndrome have been reported with ziprasidone exposure. DRESS and other Severe Cutaneous Adverse Reactions (SCAR) are sometimes fatal. Discontinue ziprasidone hydrochloride if DRESS or other types of SCAR are suspected.(5.4)
- *Tardive Dyskinesia* : May develop acutely or chronically. (5.5)
- *Metabolic Changes* : Atypical antipsychotic drugs have been associated with metabolic changes that may increase cardiovascular/ cerebrovascular risk. These metabolic changes include hyperglycemia, dyslipidemia, and weight gain. (5.6)
- *Hyperglycemia and Diabetes Mellitus (DM)*: Monitor all patients for symptoms of hyperglycemia including polydipsia,

polyuria, polyphagia, and weakness. Patients with DM risk factors should undergo blood glucose testing before and during treatment. (5.6)

- *Dyslipidemia* : Undesirable alterations have been observed in patients treated with atypical antipsychotics. (5.6)
- *Weight Gain* : Weight gain has been reported. Monitor weight gain. (5.6)
- *Rash* : Discontinue in patients who develop a rash without an identified cause. (5.7)
- *Orthostatic Hypotension* : Use with caution in patients with known cardiovascular or cerebrovascular disease. (5.8)
- *Leukopenia, Neutropenia, and Agranulocytosis* has been reported with antipsychotics. Patients with a pre-existing low white blood cell count (WBC) or a history of leukopenia/neutropenia should have their complete blood count (CBC) monitored frequently during the first few months of therapy and should discontinue ziprasidone hydrochloride at the first sign of a decline in WBC in the absence of other causative factors. (5.9)
- *Seizures* : Use cautiously in patients with a history of seizures or with conditions that lower seizure threshold. (5.10)
- *Potential for Cognitive and Motor impairment* : Patients should use caution when operating machinery. (5.13)
- *Suicide* : Closely supervise high-risk patients. (5.16)

----- **ADVERSE REACTIONS** -----

Commonly observed adverse reactions (incidence  $\geq$ 5% and at least twice the incidence for placebo) were:

- *Schizophrenia* : Somnolence, respiratory tract infection. (6.1)

**To report SUSPECTED ADVERSE REACTIONS, contact Wockhardt USA LLC. at 1-800-346-6854 or FDA at 1-800-FDA-1088 or [www.fda.gov/medwatch](http://www.fda.gov/medwatch).**

----- **DRUG INTERACTIONS** -----

- Ziprasidone should not be used in combination with other drugs that have demonstrated QT prolongation. (4.1, 7.3)
- The absorption of ziprasidone is increased up to two-fold in the presence of food. (7.9)
- The full prescribing information contains additional drug interactions. (7).

----- **USE IN SPECIFIC POPULATIONS** -----

- *Pregnancy* : Ziprasidone should be used during pregnancy only if the potential benefit justifies the potential risk. (8.1)
- *Nursing Mothers* : Breast feeding is not recommended. (8.3)
- *Pediatric Use* : Safety and effectiveness for pediatric patients has not been established. (8.4)

See 17 for PATIENT COUNSELING INFORMATION.

**Revised: 12/2017**

---

**FULL PRESCRIBING INFORMATION: CONTENTS\***

**WARNING: INCREASED MORTALITY IN ELDERLY PATIENTS WITH DEMENTIA-RELATED PSYCHOSIS**

**1 INDICATIONS AND USAGE**

1.1 Schizophrenia

**2 DOSAGE AND ADMINISTRATION**

2.1 Schizophrenia

2.4 Dosing in Special Populations

**3 DOSAGE FORMS AND STRENGTHS**

**4 CONTRAINDICATIONS**

4.1 QT Prolongation

4.2 Hypersensitivity

**5 WARNINGS AND PRECAUTIONS**

5.1 Increased Mortality in Elderly Patients with Dementia-Related Psychosis

5.2 QT Prolongation and Risk of Sudden Death

5.3 Neuroleptic Malignant Syndrome (NMS)

5.4 Severe Cutaneous Adverse Reactions

5.5 Tardive Dyskinesia

5.6 Metabolic Changes

5.7 Rash

5.8 Orthostatic Hypotension

- 5.9 Leukopenia, Neutropenia, and Agranulocytosis
- 5.10 Seizures
- 5.11 Dysphagia
- 5.12 Hyperprolactinemia
- 5.13 Potential for Cognitive and Motor Impairment
- 5.14 Priapism
- 5.15 Body Temperature Regulation
- 5.16 Suicide
- 5.17 Patients with concomitant illnesses
- 5.18 Laboratory Tests

## **6 ADVERSE REACTIONS**

- 6.1 Clinical Trials Experience
- 6.2 Postmarketing Experience

## **7 DRUG INTERACTIONS**

- 7.1 Metabolic Pathway
- 7.2 In Vitro Studies
- 7.3 Pharmacodynamic Interactions
- 7.4 Pharmacokinetic Interactions
- 7.5 Lithium
- 7.6 Oral Contraceptives
- 7.7 Dextromethorphan
- 7.8 Valproate
- 7.9 Other Concomitant Drug Therapy
- 7.10 Food Interaction

## **8 USE IN SPECIFIC POPULATIONS**

- 8.1 Pregnancy
- 8.2 Labor and Delivery
- 8.3 Nursing Mothers
- 8.4 Pediatric Use
- 8.5 Geriatric Use
- 8.6 Renal Impairment
- 8.7 Hepatic Impairment
- 8.8 Age and Gender Effects
- 8.9 Smoking

## **9 DRUG ABUSE AND DEPENDENCE**

- 9.3 Dependence

## **10 OVERDOSAGE**

- 10.1 Human Experience
- 10.2 Management of Overdosage

## **11 DESCRIPTION**

## **12 CLINICAL PHARMACOLOGY**

- 12.1 Mechanism of Action
- 12.2 Pharmacodynamics
- 12.3 Pharmacokinetics

## **13 NONCLINICAL TOXICOLOGY**

- 13.1 Carcinogenesis, Mutagenesis, Impairment of Fertility

## **14 CLINICAL STUDIES**

- 14.1 Schizophrenia

## **16 HOW SUPPLIED/STORAGE AND HANDLING**

## **17 PATIENT COUNSELING INFORMATION**

- 17.1 Administration with Food
- 17.2 QTc Prolongation
- 17.3 Severe Cutaneous Adverse Reactions

---

## FULL PRESCRIBING INFORMATION

### **WARNING: INCREASED MORTALITY IN ELDERLY PATIENTS WITH DEMENTIA-RELATED PSYCHOSIS**

**Elderly patients with dementia-related psychosis treated with antipsychotic drugs are at an increased risk of death. Analyses of seventeen placebo-controlled trials (modal duration of 10 weeks), largely in patients taking atypical antipsychotic drugs, revealed a risk of death in drug-treated patients of between 1.6 to 1.7 times the risk of death in placebo-treated patients. Over the course of a typical 10-week controlled trial, the rate of death in drug-treated patients was about 4.5%, compared to a rate of about 2.6% in the placebo group. Although the causes of death were varied, most of the deaths appeared to be either cardiovascular (e.g., heart failure, sudden death) or infectious (e.g., pneumonia) in nature. Observational studies suggest that, similar to atypical antipsychotic drugs, treatment with conventional antipsychotic drugs may increase mortality. The extent to which the findings of increased mortality in observational studies may be attributed to the antipsychotic drug as opposed to some characteristic(s) of the patients is not clear. Ziprasidone hydrochloride is not approved for the treatment of patients with Dementia-Related Psychosis [see *Warnings and Precautions (5.1)*].**

## 1 INDICATIONS AND USAGE

Ziprasidone hydrochloride capsule is indicated for the treatment of schizophrenia. When deciding among the alternative treatments available for the condition needing treatment, the prescriber should consider the finding of ziprasidone's greater capacity to prolong the QT/QTc interval compared to several other antipsychotic drugs [see *Warnings and Precautions (5.2)*]. Prolongation of the QTc interval is associated in some other drugs with the ability to cause torsade de pointes-type arrhythmia, a potentially fatal polymorphic ventricular tachycardia, and sudden death. In many cases this would lead to the conclusion that other drugs should be tried first. Whether ziprasidone will cause torsade de pointes or increase the rate of sudden death is not yet known [see *Warnings and Precautions (5.2)*]

### 1.1 Schizophrenia

Ziprasidone hydrochloride capsule is indicated for the treatment of schizophrenia. The efficacy of oral ziprasidone was established in four short-term (4- and 6-week) controlled trials of adult schizophrenic inpatients and in one maintenance trial of stable adult schizophrenic inpatients [see *Clinical Studies (14.1)*].

## 2 DOSAGE AND ADMINISTRATION

### 2.1 Schizophrenia

#### Dose Selection

Ziprasidone hydrochloride capsules should be administered at an initial daily dose of 20 mg twice daily with food. In some patients, daily dosage may subsequently be adjusted on the basis of individual clinical status up to 80 mg twice daily. Dosage adjustments, if indicated, should generally occur at intervals of not less than 2 days, as steady-state is achieved within 1 to 3 days. In order to ensure use of the lowest effective dose, patients should ordinarily be observed for improvement for several weeks

before upward dosage adjustment.

Efficacy in schizophrenia was demonstrated in a dose range of 20 mg to 100 mg twice daily in short-term, placebo-controlled clinical trials. There were trends toward dose response within the range of 20 mg to 80 mg twice daily, but results were not consistent. An increase to a dose greater than 80 mg twice daily is not generally recommended. The safety of doses above 100 mg twice daily has not been systematically evaluated in clinical trials [see *Clinical Studies (14.1)*].

### Maintenance Treatment

While there is no body of evidence available to answer the question of how long a patient treated with ziprasidone should remain on it, a maintenance study in patients who had been symptomatically stable and then randomized to continue ziprasidone or switch to placebo demonstrated a delay in time to relapse for patients receiving ziprasidone hydrochloride [see *Clinical Studies (14.1)*]. No additional benefit was demonstrated for doses above 20 mg twice daily. Patients should be periodically reassessed to determine the need for maintenance treatment.

## 2.4 Dosing in Special Populations

*Oral:* Dosage adjustments are generally not required on the basis of age, gender, race, or renal or hepatic impairment. Ziprasidone hydrochloride is not approved for use in children or adolescents.

## 3 DOSAGE FORMS AND STRENGTHS

Ziprasidone hydrochloride capsules are differentiated by capsule color/size and are imprinted in black ink. Ziprasidone hydrochloride capsules are supplied for oral administration in 20 mg (white/white), 40 mg (blue/white), 60 mg (pink/white), and 80 mg (blue/blue) capsules. They are supplied in the following strengths and package configurations:

Ziprasidone Hydrochloride Capsules	
Capsule Strength (mg)	Imprint
20	W991
40	W992
60	W993
80	W994

## 4 CONTRAINDICATIONS

### 4.1 QT Prolongation

Because of ziprasidone's dose-related prolongation of the QT interval and the known association of fatal arrhythmias with QT prolongation by some other drugs, ziprasidone is contraindicated:

- in patients with a known history of QT prolongation (including congenital long QT syndrome)
- in patients with recent acute myocardial infarction
- in patients with uncompensated heart failure

Pharmacokinetic/pharmacodynamic studies between ziprasidone and other drugs that prolong the QT interval have not been performed. An additive effect of ziprasidone and other drugs that prolong the QT interval cannot be excluded. Therefore, ziprasidone should not be given with:

- dofetilide, sotalol, quinidine, other Class Ia and III anti-arrhythmics, mesoridazine, thioridazine, chlorpromazine, droperidol, pimozide, sparfloxacin, gatifloxacin, moxifloxacin, halofantrine, mefloquine, pentamidine, arsenic trioxide, levomethadyl acetate, dolasetron mesylate, probucol or tacrolimus.
- other drugs that have demonstrated QT prolongation as one of their pharmacodynamic effects and

have this effect described in the full prescribing information as a contraindication or a boxed or bolded warning [see *Warnings and Precautions (5.2)* ].

## 4.2 Hypersensitivity

Ziprasidone is contraindicated in individuals with a known hypersensitivity to the product.

## 5 WARNINGS AND PRECAUTIONS

### 5.1 Increased Mortality in Elderly Patients with Dementia-Related Psychosis

Elderly patients with dementia-related psychosis treated with antipsychotic drugs are at an increased risk of death. Ziprasidone hydrochloride is not approved for the treatment of dementia-related psychosis. [see *Boxed Warning*]

### 5.2 QT Prolongation and Risk of Sudden Death

Ziprasidone use should be avoided in combination with other drugs that are known to prolong the QTc interval [see *Contraindications (4.1)*, *Drug Interactions (7.4)*]. Additionally, clinicians should be alert to the identification of other drugs that have been consistently observed to prolong the QTc interval. Such drugs should not be prescribed with ziprasidone. Ziprasidone should also be avoided in patients with congenital long QT syndrome and in patients with a history of cardiac arrhythmias [see *Contraindications (4)*].

A study directly comparing the QT/QTc prolonging effect of oral ziprasidone with several other drugs effective in the treatment of schizophrenia was conducted in patient volunteers. In the first phase of the trial, ECGs were obtained at the time of maximum plasma concentration when the drug was administered alone. In the second phase of the trial, ECGs were obtained at the time of maximum plasma concentration while the drug was co-administered with an inhibitor of the CYP4503A4 metabolism of the drug.

In the first phase of the study, the mean change in QTc from baseline was calculated for each drug, using a sample-based correction that removes the effect of heart rate on the QT interval. The mean increase in QTc from baseline for ziprasidone ranged from approximately 9 to 14 msec greater than for four of the comparator drugs (risperidone, olanzapine, quetiapine, and haloperidol), but was approximately 14 msec less than the prolongation observed for thioridazine.

In the second phase of the study, the effect of ziprasidone on QTc length was not augmented by the presence of a metabolic inhibitor (ketoconazole 200 mg twice daily).

In placebo-controlled trials, oral ziprasidone increased the QTc interval compared to placebo by approximately 10 msec at the highest recommended daily dose of 160 mg. In clinical trials with oral ziprasidone, the electrocardiograms of 2/2988 (0.06%) patients who received ziprasidone hydrochloride and 1/440 (0.23%) patients who received placebo revealed QTc intervals exceeding the potentially clinically relevant threshold of 500 msec. In the ziprasidone-treated patients, neither case suggested a role of ziprasidone. One patient had a history of prolonged QTc and a screening measurement of 489 msec; QTc was 503 msec during ziprasidone treatment. The other patient had a QTc of 391 msec at the end of treatment with ziprasidone and upon switching to thioridazine experienced QTc measurements of 518 and 593 msec.

Some drugs that prolong the QT/QTc interval have been associated with the occurrence of torsade de pointes and with sudden unexplained death. The relationship of QT prolongation to torsade de pointes is clearest for larger increases (20 msec and greater) but it is possible that smaller QT/QTc prolongations may also increase risk, or increase it in susceptible individuals. Although torsade de pointes has not been observed in association with the use of ziprasidone in premarketing studies and experience is too limited to rule out an increased risk, there have been rare post-marketing reports (in the presence of multiple confounding factors) [see *Adverse Reactions (6.2)*].

As with other antipsychotic drugs and placebo, sudden unexplained deaths have been reported in

patients taking ziprasidone at recommended doses. The premarketing experience for ziprasidone did not reveal an excess risk of mortality for ziprasidone compared to other antipsychotic drugs or placebo, but the extent of exposure was limited, especially for the drugs used as active controls and placebo. Nevertheless, ziprasidone's larger prolongation of QTc length compared to several other antipsychotic drugs raises the possibility that the risk of sudden death may be greater for ziprasidone than for other available drugs for treating schizophrenia. This possibility needs to be considered in deciding among alternative drug products [see *Indications and Usage (1)*].

Certain circumstances may increase the risk of the occurrence of torsade de pointes and/or sudden death in association with the use of drugs that prolong the QTc interval, including (1) bradycardia; (2) hypokalemia or hypomagnesemia; (3) concomitant use of other drugs that prolong the QTc interval; and (4) presence of congenital prolongation of the QT interval.

It is recommended that patients being considered for ziprasidone treatment who are at risk for significant electrolyte disturbances, hypokalemia in particular, have baseline serum potassium and magnesium measurements. Hypokalemia (and/or hypomagnesemia) may increase the risk of QT prolongation and arrhythmia. Hypokalemia may result from diuretic therapy, diarrhea, and other causes. Patients with low serum potassium and/or magnesium should be repleted with those electrolytes before proceeding with treatment. It is essential to periodically monitor serum electrolytes in patients for whom diuretic therapy is introduced during ziprasidone treatment. Persistently prolonged QTc intervals may also increase the risk of further prolongation and arrhythmia, but it is not clear that routine screening ECG measures are effective in detecting such patients. Rather, ziprasidone should be avoided in patients with histories of significant cardiovascular illness, e.g., QT prolongation, recent acute myocardial infarction, uncompensated heart failure, or cardiac arrhythmia. Ziprasidone should be discontinued in patients who are found to have persistent QTc measurements >500 msec.

For patients taking ziprasidone who experience symptoms that could indicate the occurrence of torsade de pointes, e.g., dizziness, palpitations, or syncope, the prescriber should initiate further evaluation, e.g., Holter monitoring may be useful.

### **5.3 Neuroleptic Malignant Syndrome (NMS)**

A potentially fatal symptom complex sometimes referred to as Neuroleptic Malignant Syndrome (NMS) has been reported in association with administration of antipsychotic drugs. Clinical manifestations of NMS are hyperpyrexia, muscle rigidity, altered mental status, and evidence of autonomic instability (irregular pulse or blood pressure, tachycardia, diaphoresis, and cardiac dysrhythmia). Additional signs may include elevated creatinine phosphokinase, myoglobinuria (rhabdomyolysis), and acute renal failure.

The diagnostic evaluation of patients with this syndrome is complicated. In arriving at a diagnosis, it is important to exclude cases where the clinical presentation includes both serious medical illness (e.g., pneumonia, systemic infection, etc.) and untreated or inadequately treated extrapyramidal signs and symptoms (EPS). Other important considerations in the differential diagnosis include central anticholinergic toxicity, heat stroke, drug fever, and primary central nervous system (CNS) pathology.

The management of NMS should include: (1) immediate discontinuation of antipsychotic drugs and other drugs not essential to concurrent therapy; (2) intensive symptomatic treatment and medical monitoring; and (3) treatment of any concomitant serious medical problems for which specific treatments are available. There is no general agreement about specific pharmacological treatment regimens for NMS.

If a patient requires antipsychotic drug treatment after recovery from NMS, the potential reintroduction of drug therapy should be carefully considered. The patient should be carefully monitored, since recurrences of NMS have been reported.

### **5.4 Severe Cutaneous Adverse Reactions**

#### **Drug Reaction with Eosinophilia and Systemic Symptoms (DRESS)**

Drug Reaction with Eosinophilia and Systemic Symptoms (DRESS) has been reported with Ziprasidone exposure. DRESS consists of a combination of three or more of the following: cutaneous reaction (such as rash or exfoliative dermatitis), eosinophilia, fever, lymphadenopathy and one or more systemic complications such as hepatitis, nephritis, pneumonitis, myocarditis, and pericarditis. DRESS is sometimes fatal. Discontinue ziprasidone if DRESS is suspected.

#### Other severe cutaneous adverse reactions

Other severe cutaneous adverse reactions, such as Stevens-Johnson syndrome, have been reported with ziprasidone exposure. Severe cutaneous adverse reactions are sometimes fatal. Discontinue ziprasidone if severe cutaneous adverse reactions are suspected.

### **5.5 Tardive Dyskinesia**

A syndrome of potentially irreversible, involuntary, dyskinetic movements may develop in patients undergoing treatment with antipsychotic drugs. Although the prevalence of the syndrome appears to be highest among the elderly, especially elderly women, it is impossible to rely upon prevalence estimates to predict, at the inception of antipsychotic treatment, which patients are likely to develop the syndrome. Whether antipsychotic drug products differ in their potential to cause tardive dyskinesia is unknown.

The risk of developing tardive dyskinesia and the likelihood that it will become irreversible are believed to increase as the duration of treatment and the total cumulative dose of antipsychotic drugs administered to the patient increase. However, the syndrome can develop, although much less commonly, after relatively brief treatment periods at low doses.

There is no known treatment for established cases of tardive dyskinesia, although the syndrome may remit, partially or completely, if antipsychotic treatment is withdrawn. Antipsychotic treatment itself, however, may suppress (or partially suppress) the signs and symptoms of the syndrome, and thereby may possibly mask the underlying process. The effect that symptomatic suppression has upon the long-term course of the syndrome is unknown.

Given these considerations, ziprasidone should be prescribed in a manner that is most likely to minimize the occurrence of tardive dyskinesia. Chronic antipsychotic treatment should generally be reserved for patients who suffer from a chronic illness that (1) is known to respond to antipsychotic drugs, and (2) for whom alternative, equally effective, but potentially less harmful treatments are not available or appropriate. In patients who do require chronic treatment, the smallest dose and the shortest duration of treatment producing a satisfactory clinical response should be sought. The need for continued treatment should be reassessed periodically.

If signs and symptoms of tardive dyskinesia appear in a patient on ziprasidone, drug discontinuation should be considered. However, some patients may require treatment with ziprasidone despite the presence of the syndrome.

### **5.6 Metabolic Changes**

Atypical antipsychotic drugs have been associated with metabolic changes that may increase cardiovascular/cerebrovascular risk. These metabolic changes include hyperglycemia, dyslipidemia, and body weight gain. While all of the drugs in the class have been shown to produce some metabolic changes, each drug has its own specific risk profile.

#### Hyperglycemia and Diabetes Mellitus

Hyperglycemia and diabetes mellitus, in some cases extreme and associated with ketoacidosis or hyperosmolar coma or death, have been reported in patients treated with atypical antipsychotics. There have been few reports of hyperglycemia or diabetes in patients treated with ziprasidone hydrochloride. Although fewer patients have been treated with ziprasidone hydrochloride, it is not known if this more limited experience is the sole reason for the paucity of such reports. Assessment of the relationship between atypical antipsychotic use and glucose abnormalities is complicated by the possibility of an increased background risk of diabetes mellitus in patients with schizophrenia and the increasing



incidence of diabetes mellitus in the general population. Given these confounders, the relationship between atypical antipsychotic use and hyperglycemia-related adverse reactions is not completely understood. Precise risk estimates for hyperglycemia-related adverse reactions in patients treated with atypical antipsychotics are not available.

Patients with an established diagnosis of diabetes mellitus who are started on atypical antipsychotics should be monitored regularly for worsening of glucose control. Patients with risk factors for diabetes mellitus (e.g., obesity, family history of diabetes) who are starting treatment with atypical antipsychotics should undergo fasting blood glucose testing at the beginning of treatment and periodically during treatment. Any patient treated with atypical antipsychotics should be monitored for symptoms of hyperglycemia including polydipsia, polyuria, polyphagia, and weakness. Patients who develop symptoms of hyperglycemia during treatment with atypical antipsychotics should undergo fasting blood glucose testing. In some cases, hyperglycemia has resolved when the atypical antipsychotic was discontinued; however, some patients required continuation of antidiabetic treatment despite discontinuation of the suspect drug.

Pooled data from short-term, placebo-controlled studies in schizophrenia are presented in Tables 1 to 2. Note that for the flexible dose studies in schizophrenia, each subject is categorized as having received either low (20 to 40 mg BID) or high (60 to 80 mg BID) dose based on the subject's modal daily dose. In the tables showing categorical changes, the percentages (% column) are calculated as  $100 \times (n/N)$ .

**Table 1: Glucose\* Mean Change from Baseline in Short-Term (up to 6 weeks), Placebo-Controlled, Fixed-Dose, Oral Ziprasidone, Monotherapy Trials in Adult Patients with Schizophrenia**

Mean Random Glucose Change from Baseline mg/dL (N)						Placebo
Ziprasidone						
5 mg BID	20 mg BID	40 mg BID	60 mg BID	80 mg BID	100 mg BID	
-1.1 (N=45)	+2.4 (N=179)	-0.2 (N=146)	-0.5 (N=119)	-1.7 (N=104)	+4.1 (N=85)	+1.4 (N=260)

\*"Random" glucose measurements-fasting/non-fasting status unknown

**Table 2: Glucose\* Categorical Changes in Short-Term (up to 6 weeks), Placebo-Controlled, Fixed-Dose, Oral Ziprasidone, Monotherapy Trials in Adult Patients with Schizophrenia**

Laboratory Analyte	Category Change (at least once) from Baseline	Treatment Arm	N	n (%)
Random Glucose	Normal to High (<100 mg/dL to $\geq 126$ mg/dL)	Ziprasidone	438	77 (17.6%)
		Placebo	169	26 (15.4%)
	Borderline to High ( $\geq 100$ mg/dL and <126 mg/dL to $\geq 126$ mg/dL)	Ziprasidone	159	54 (34%)
		Placebo	66	22 (33.3%)

\*"Random" glucose measurements – fasting/non-fasting status unknown

In long-term (at least 1 year), placebo-controlled, flexible-dose studies in schizophrenia, the mean change from baseline in random glucose for ziprasidone 20 to 40 mg BID was -3.4 mg/dL (N=122); for ziprasidone 60 to 80 mg BID was +1.3 mg/dL (N=10); and for placebo was +0.3 mg/dL (N=71).

### Dyslipidemia

Undesirable alterations in lipids have been observed in patients treated with atypical antipsychotics. Pooled data from short-term, placebo-controlled studies in schizophrenia are presented in Tables 5 to 6.

**Table 5: Lipid\* Mean Change from Baseline in Short-Term (up to 6 weeks), Placebo-Controlled,**

## Fixed-Dose, Oral Ziprasidone Monotherapy Trials in Adult Patients with Schizophrenia

Mean Lipid Change from Baseline mg/dL (N)							
Laboratory	Ziprasidone						Placebo
Analyte	5 mg BID	20 mg BID	40 mg BID	60 mg BID	80 mg BID	100 mg BID	
Triglycerides	-12.9 (N=45)	-9.6 (N=181)	-17.3 (N=146)	-0.05 (N=120)	-16 (N=104)	+0.8 (N=85)	-18.6 (N=260)
Total Cholesterol	-3.6 (N=45)	-4.4 (N=181)	-8.2 (N=147)	-3.6 (N=120)	-10 (N=104)	-3.6 (N=85)	-4.7 (N=261)

\*"Random" lipid measurements, fasting/non-fasting status unknown

**Table 6: Lipid\* Categorical Changes in Short-Term (up to 6 weeks), Placebo-Controlled, Fixed-Dose, Oral Ziprasidone Monotherapy Trials in Adult Patients with Schizophrenia**

Laboratory Analyte	Category Change (at least once) from Baseline	Treatment Arm	N	n (%)
Triglycerides	Increase by $\geq 50$ mg/dL	Ziprasidone	681	232 (34.1%)
		Placebo	260	53 (20.4%)
	Normal to High ( $<150$ mg/dL to $\geq 200$ mg/dL)	Ziprasidone	429	63 (14.7%)
		Placebo	152	12 (7.9%)
	Borderline to High ( $\geq 150$ mg/dL and $<200$ mg/dL to $\geq 200$ mg/dL)	Ziprasidone	92	43 (46.7%)
		Placebo	41	12 (29.3%)
Total Cholesterol	Increase by $\geq 40$ mg/dL	Ziprasidone	682	76 (11.1%)
		Placebo	261	26 (10%)
	Normal to High ( $<200$ mg/dL to $\geq 240$ mg/dL)	Ziprasidone	380	15 (3.9%)
		Placebo	145	0 (0%)
	Borderline to High ( $\geq 200$ mg/dL and $<240$ mg/dL to $\geq 240$ mg/dL)	Ziprasidone	207	56 (27.1%)
		Placebo	82	22 (26.8%)

\*"Random" lipid measurements, fasting/non-fasting status unknown

In long-term (at least 1 year), placebo-controlled, flexible-dose studies in schizophrenia, the mean change from baseline in random triglycerides for ziprasidone 20 to 40 mg BID was +26.3 mg/dL (N=15); for ziprasidone 60 to 80 mg BID was -39.3 mg/dL (N=10); and for placebo was +12.9 mg/dL (N=9). In long-term (at least 1 year), placebo-controlled, flexible-dose studies in schizophrenia, the mean change from baseline in random total cholesterol for ziprasidone 20 to 40 mg BID was +2.5 mg/dL (N=14); for ziprasidone 60 to 80 mg BID was -19.7 mg/dL (N=10); and for placebo was -28 mg/dL (N=9).

### Weight Gain

Weight gain has been observed with atypical antipsychotic use. Monitoring of weight is recommended. Pooled data from short-term, placebo-controlled studies in schizophrenia are presented in Table 9.

**Table 9: Weight Mean Changes in Short-Term (up to 6 weeks), Placebo-Controlled, Fixed-Dose, Oral Ziprasidone Monotherapy Trials in Adult Patients with Schizophrenia**

Ziprasidone						Placebo
5 mg BID	20 mg BID	40 mg BID	60 mg BID	80 mg BID	100 mg BID	
<b>Mean Weight (kg) Changes from Baseline (N)</b>						
+0.3 (N=40)	+1 (N=167)	+1 (N=135)	+0.7 (N=109)	+1.1 (N=97)	+0.9 (N=74)	-0.4 (227)
<b>Proportion of Patients with <math>\geq 7\%</math> Increase in Weight from Baseline (N)</b>						

0% (N=40)	9.0% (N=167)	10.4% (N=135)	7.3% (N=109)	15.5% (N=97)	10.8% (N=74)	4% (N=227)
--------------	-----------------	------------------	-----------------	-----------------	-----------------	---------------

In long-term (at least 1 year), placebo-controlled, flexible-dose studies in schizophrenia, the mean change from baseline weight for ziprasidone 20 to 40 mg BID was -2.3 kg (N=124); for ziprasidone 60 to 80 mg BID was +2.5 kg (N=10); and for placebo was -2.9 kg (N=72). In the same long-term studies, the proportion of subjects with  $\geq 7\%$  increase in weight from baseline for ziprasidone 20 to 40 mg BID was 5.6% (N=124); for ziprasidone 60 to 80 mg BID was 20% (N=10), and for placebo was 5.6% (N=72). In a long-term (at least 1 year), placebo-controlled, fixed-dose study in schizophrenia, the mean change from baseline weight for ziprasidone 20 mg BID was -2.6 kg (N=72); for ziprasidone 40 mg BID was -3.3 kg (N=69); for ziprasidone 80 mg BID was -2.8 kg (N=70) and for placebo was -3.8 kg (N=70). In the same long-term fixed-dose schizophrenia study, the proportion of subjects with  $\geq 7\%$  increase in weight from baseline for ziprasidone 20 mg BID was 5.6% (N=72); for ziprasidone 40 mg BID was 2.9% (N=69); for ziprasidone 80 mg BID was 5.7% (N=70) and for placebo was 2.9% (N=70).

**Schizophrenia** - The proportions of patients meeting a weight gain criterion of  $\geq 7\%$  of body weight were compared in a pool of four 4- and 6-week placebo-controlled schizophrenia clinical trials, revealing a statistically significantly greater incidence of weight gain for ziprasidone (10%) compared to placebo (4%). A median weight gain of 0.5 kg was observed in ziprasidone patients compared to no median weight change in placebo patients. In this set of clinical trials, weight gain was reported as an adverse reaction in 0.4% and 0.4% of ziprasidone and placebo patients, respectively. During long-term therapy with ziprasidone, a categorization of patients at baseline on the basis of body mass index (BMI) revealed the greatest mean weight gain and highest incidence of clinically significant weight gain ( $> 7\%$  of body weight) in patients with low BMI ( $<23$ ) compared to normal (23 to 27) or overweight patients ( $>27$ ). There was a mean weight gain of 1.4 kg for those patients with a "low" baseline BMI, no mean change for patients with a "normal" BMI, and a 1.3 kg mean weight loss for patients who entered the program with a "high" BMI.

## 5.7 Rash

In premarketing trials with ziprasidone, about 5% of patients developed rash and/or urticaria, with discontinuation of treatment in about one-sixth of these cases. The occurrence of rash was related to dose of ziprasidone, although the finding might also be explained by the longer exposure time in the higher dose patients. Several patients with rash had signs and symptoms of associated systemic illness, e.g., elevated WBCs. Most patients improved promptly with adjunctive treatment with antihistamines or steroids and/or upon discontinuation of ziprasidone, and all patients experiencing these reactions were reported to recover completely. Upon appearance of rash for which an alternative etiology cannot be identified, ziprasidone should be discontinued.

## 5.8 Orthostatic Hypotension

Ziprasidone may induce orthostatic hypotension associated with dizziness, tachycardia, and, in some patients, syncope, especially during the initial dose-titration period, probably reflecting its  $\alpha_1$ -adrenergic antagonist properties. Syncope was reported in 0.6% of the patients treated with ziprasidone.

Ziprasidone should be used with particular caution in patients with known cardiovascular disease (history of myocardial infarction or ischemic heart disease, heart failure or conduction abnormalities), cerebrovascular disease, or conditions which would predispose patients to hypotension (dehydration, hypovolemia, and treatment with antihypertensive medications).

## 5.9 Leukopenia, Neutropenia, and Agranulocytosis

In clinical trial and postmarketing experience, events of leukopenia/neutropenia have been reported temporally related to antipsychotic agents. Agranulocytosis (including fatal cases) has also been reported.

Possible risk factors for leukopenia/neutropenia include pre-existing low white blood cell count (WBC) and history of drug induced leukopenia/neutropenia. Patients with a pre-existing low WBC or a history of drug induced leukopenia/neutropenia should have their complete blood count (CBC) monitored frequently during the first few months of therapy and should discontinue ziprasidone hydrochloride at the first sign of decline in WBC in the absence of other causative factors.

Patients with neutropenia should be carefully monitored for fever or other symptoms or signs of infection and treated promptly if such symptoms or signs occur. Patients with severe neutropenia (absolute neutrophil count  $<1000/\text{mm}^3$ ) should discontinue ziprasidone hydrochloride and have their WBC followed until recovery.

### **5.10 Seizures**

During clinical trials, seizures occurred in 0.4% of patients treated with ziprasidone. There were confounding factors that may have contributed to the occurrence of seizures in many of these cases. As with other antipsychotic drugs, ziprasidone should be used cautiously in patients with a history of seizures or with conditions that potentially lower the seizure threshold, e.g., Alzheimer's dementia. Conditions that lower the seizure threshold may be more prevalent in a population of 65 years or older.

### **5.11 Dysphagia**

Esophageal dysmotility and aspiration have been associated with antipsychotic drug use. Aspiration pneumonia is a common cause of morbidity and mortality in elderly patients, in particular those with advanced Alzheimer's dementia. Ziprasidone and other antipsychotic drugs should be used cautiously in patients at risk for aspiration pneumonia [*see Boxed Warning*].

### **5.12 Hyperprolactinemia**

As with other drugs that antagonize dopamine D<sub>2</sub> receptors, ziprasidone elevates prolactin levels in humans. Increased prolactin levels were also observed in animal studies with this compound, and were associated with an increase in mammary gland neoplasia in mice; a similar effect was not observed in rats [*see Nonclinical Toxicology (13.1)*]. Tissue culture experiments indicate that approximately one-third of human breast cancers are prolactin-dependent *in vitro*, a factor of potential importance if the prescription of these drugs is contemplated in a patient with previously detected breast cancer. Neither clinical studies nor epidemiologic studies conducted to date have shown an association between chronic administration of this class of drugs and tumorigenesis in humans; the available evidence is considered too limited to be conclusive at this time.

Although disturbances such as galactorrhea, amenorrhea, gynecomastia, and impotence have been reported with prolactin-elevating compounds, the clinical significance of elevated serum prolactin levels is unknown for most patients. Long-standing hyperprolactinemia when associated with hypogonadism may lead to decreased bone density.

### **5.13 Potential for Cognitive and Motor Impairment**

Somnolence was a commonly reported adverse reaction in patients treated with ziprasidone. In the 4- and 6-week placebo-controlled trials, somnolence was reported in 14% of patients on ziprasidone compared to 7% of placebo patients. Somnolence led to discontinuation in 0.3% of patients in short-term clinical trials. Since ziprasidone has the potential to impair judgment, thinking, or motor skills, patients should be cautioned about performing activities requiring mental alertness, such as operating a motor vehicle (including automobiles) or operating hazardous machinery until they are reasonably certain that ziprasidone therapy does not affect them adversely.

### **5.14 Priapism**

One case of priapism was reported in the premarketing database. While the relationship of the reaction to ziprasidone use has not been established, other drugs with alpha-adrenergic blocking effects have been reported to induce priapism, and it is possible that ziprasidone may share this capacity. Severe

priapism may require surgical intervention.

### **5.15 Body Temperature Regulation**

Although not reported with ziprasidone in premarketing trials, disruption of the body's ability to reduce core body temperature has been attributed to antipsychotic agents. Appropriate care is advised when prescribing ziprasidone for patients who will be experiencing conditions which may contribute to an elevation in core body temperature, e.g., exercising strenuously, exposure to extreme heat, receiving concomitant medication with anticholinergic activity, or being subject to dehydration.

### **5.16 Suicide**

The possibility of a suicide attempt is inherent in psychotic illness, and close supervision of high-risk patients should accompany drug therapy. Prescriptions for ziprasidone should be written for the smallest quantity of capsules consistent with good patient management in order to reduce the risk of overdose.

### **5.17 Patients with concomitant illnesses**

Clinical experience with ziprasidone in patients with certain concomitant systemic illnesses is limited [see *Use in Specific Populations (8.6),(8.7)*] Ziprasidone has not been evaluated or used to any appreciable extent in patients with a recent history of myocardial infarction or unstable heart disease.

Patients with these diagnoses were excluded from premarketing clinical studies. Because of the risk of QTc prolongation and orthostatic hypotension with ziprasidone, caution should be observed in cardiac patients [see *Warnings and Precautions (5.2), (5.8)*]

### **5.18 Laboratory Tests**

Patients being considered for ziprasidone treatment that are at risk of significant electrolyte disturbances should have baseline serum potassium and magnesium measurements. Low serum potassium and magnesium should be replaced before proceeding with treatment. Patients who are started on diuretics during Ziprasidone therapy need periodic monitoring of serum potassium and magnesium. Ziprasidone should be discontinued in patients who are found to have persistent QTc measurements >500 msec. [see *Warnings and Precautions (5.2)*]

## **6 ADVERSE REACTIONS**

### **6.1 Clinical Trials Experience**

Because clinical trials are conducted under widely varying conditions, adverse reaction rates observed in the clinical trials of a drug cannot be directly compared to rates in the clinical trials of another drug and may not reflect the rates observed in practice.

Clinical trials for oral ziprasidone included approximately 5700 patients and/or normal subjects exposed to one or more doses of ziprasidone. Of these 5700, over 4800 were patients who participated in multiple-dose effectiveness trials, and their experience corresponded to approximately 1831 patient-years. These patients include: (1) 4331 patients who participated in multiple-dose trials, predominantly in schizophrenia, representing approximately 1698 patient-years of exposure. The conditions and duration of treatment with ziprasidone included open-label and double-blind studies, inpatient and outpatient studies, and short-term and longer-term exposure.

Adverse reactions during exposure were obtained by collecting voluntarily reported adverse experiences, as well as results of physical examinations, vital signs, weights, laboratory analyses, ECGs, and results of ophthalmologic examinations.

The stated frequencies of adverse reactions represent the proportion of individuals who experienced, at least once, a treatment-emergent adverse reaction of the type listed. A reaction was considered treatment

emergent if it occurred for the first time or worsened while receiving therapy following baseline evaluation.

#### Adverse Findings Observed in Short-Term, Placebo-Controlled Trials with Oral Ziprasidone

The following findings are based on the short-term placebo-controlled premarketing trials for schizophrenia (a pool of two 6-week, and two 4-week fixed-dose trials) in which ziprasidone was administered in doses ranging from 10 to 200 mg/day.

#### Commonly Observed Adverse Reactions in Short Term-Placebo-Controlled Trials

The following adverse reactions were the most commonly observed adverse reactions associated with the use of ziprasidone (incidence of 5% or greater) and not observed at an equivalent incidence among placebo-treated patients (ziprasidone incidence at least twice that for placebo):

Schizophrenia trials (*see Table 11*)

- Somnolence
- Respiratory Tract Infection

### **SCHIZOPHRENIA**

#### **Adverse Reactions Associated with Discontinuation of Treatment in Short-Term, Placebo-Controlled Trials of Oral Ziprasidone**

Approximately 4.1% (29/702) of ziprasidone-treated patients in short-term, placebo-controlled studies discontinued treatment due to an adverse reaction, compared with about 2.2% (6/273) on placebo. The most common reaction associated with dropout was rash, including 7 dropouts for rash among ziprasidone patients (1%) compared to no placebo patients [*see Warnings and Precautions (5.6)*].

#### **Adverse Reactions Occurring at an Incidence of 2% or More Among Ziprasidone-Treated Patients in Short-Term, Oral, Placebo-Controlled Trials**

Table 11 enumerates the incidence, rounded to the nearest percent, of treatment-emergent adverse reactions that occurred during acute therapy (up to 6 weeks) in predominantly patients with schizophrenia, including only those reactions that occurred in 2% or more of patients treated with ziprasidone and for which the incidence in patients treated with ziprasidone was greater than the incidence in placebo-treated patients.

**Table 11: Treatment-Emergent Adverse Reaction Incidence In Short-Term Oral Placebo-Controlled Trials - Schizophrenia**

<b>Body System/Adverse Reaction</b>	<b>Percentage of Patients Reporting Reaction</b>	
	<b>Ziprasidone (N=702)</b>	<b>Placebo (N=273)</b>
<b>Body as a Whole</b>		
Asthenia	5	3
Accidental Injury	4	2
Chest Pain	3	2
<b>Cardiovascular</b>		
Tachycardia	2	1
<b>Digestive</b>		
Nausea	10	7
Constipation	9	8
Dyspepsia	8	7
Diarrhea	5	4

Dry Mouth	4	2
Anorexia	2	1
<b>Nervous</b>		
Extrapyramidal Symptoms*	14	8
Somnolence	14	7
Akathisia	8	7
Dizziness**	8	6
<b>Respiratory</b>		
Respiratory Tract Infection	8	3
Rhinitis	4	2
Cough Increased	3	1
<b>Skin and Appendages</b>		
Rash	4	3
Fungal Dermatitis	2	1
<b>Special Senses</b>		
Abnormal Vision	3	2

\* Extrapyramidal Symptoms includes the following adverse reaction terms: extrapyramidal syndrome, hypertonia, dystonia, dyskinesia, hypokinesia, tremor, paralysis and twitching. None of these adverse reactions occurred individually at an incidence greater than 5% in schizophrenia trials.

\*\* Dizziness includes the adverse reaction terms dizziness and lightheadedness.

### **Dose Dependency of Adverse Reactions in Short-Term, Fixed-Dose, Placebo-Controlled Trials**

An analysis for dose response in the schizophrenia 4-study pool revealed an apparent relation of adverse reaction to dose for the following reactions: asthenia, postural hypotension, anorexia, dry mouth, increased salivation, arthralgia, anxiety, dizziness, dystonia, hypertonia, somnolence, tremor, rhinitis, rash, and abnormal vision.

**Extrapyramidal Symptoms (EPS)** - The incidence of reported EPS (which included the adverse reaction terms extrapyramidal syndrome, hypertonia, dystonia, dyskinesia, hypokinesia, tremor, paralysis and twitching) for ziprasidone-treated patients in the short-term, placebo-controlled schizophrenia trials was 14% vs. 8% for placebo. Objectively collected data from those trials on the Simpson-Angus Rating Scale (for EPS) and the Barnes Akathisia Scale (for akathisia) did not generally show a difference between ziprasidone and placebo.

**Dystonia - Class Effect:** Symptoms of dystonia, prolonged abnormal contractions of muscle groups, may occur in susceptible individuals during the first few days of treatment. Dystonic symptoms include: spasm of the neck muscles, sometimes progressing to tightness of the throat, swallowing difficulty, difficulty breathing, and/or protrusion of the tongue. While these symptoms can occur at low doses, they occur more frequently and with greater severity with high potency and at higher doses of first generation antipsychotic drugs. An elevated risk of acute dystonia is observed in males and younger age groups.

**Vital Sign Changes** - Ziprasidone is associated with orthostatic hypotension [see *Warnings and Precautions* (5.8)]

**ECG Changes** - Ziprasidone is associated with an increase in the QTc interval [see *Warnings and Precautions* (5.2)]. In the schizophrenia trials, ziprasidone was associated with a mean increase in heart rate of 1.4 beats per minute compared to a 0.2 beats per minute decrease among placebo patients.

### **Other Adverse Reactions Observed During the Premarketing Evaluation of Oral Ziprasidone**

Following is a list of COSTART terms that reflect treatment-emergent adverse reactions as defined in the introduction to the **ADVERSE REACTIONS** section reported by patients treated with ziprasidone in schizophrenia trials at multiple doses >4 mg/day within the database of 3834 patients. All reported

reactions are included except those already listed in Table 11 or elsewhere in labeling, those reaction terms that were so general as to be uninformative, reactions reported only once and that did not have a substantial probability of being acutely life-threatening, reactions that are part of the illness being treated or are otherwise common as background reactions, and reactions considered unlikely to be drug-related. It is important to emphasize that, although the reactions reported occurred during treatment with ziprasidone, they were not necessarily caused by it.

Adverse reactions are further categorized by body system and listed in order of decreasing frequency according to the following definitions:

*Frequent* - adverse reactions occurring in at least 1/100 patients ( $\geq 1\%$  of patients) (only those not already listed in the tabulated results from placebo-controlled trials appear in this listing);

*Infrequent* - adverse reactions occurring in 1/100 to 1/1000 patients (in 0.1 to 1% of patients)

*Rare* - adverse reactions occurring in fewer than 1/1000 patients ( $< 0.1\%$  of patients).

### **Body as a Whole**

*Frequent* - abdominal pain, flu syndrome, fever, accidental fall, face edema, chills, photosensitivity reaction, flank pain, hypothermia, motor vehicle accident

### **Cardiovascular System**

*Frequent* - tachycardia, hypertension, postural hypotension

*Infrequent* - bradycardia, angina pectoris, atrial fibrillation

*Rare* - first degree AV block, bundle branch block, phlebitis, pulmonary embolus, cardiomegaly, cerebral infarct, cerebrovascular accident, deep thrombophlebitis, myocarditis, thrombophlebitis

### **Digestive System**

*Frequent* - anorexia, vomiting

*Infrequent* - rectal hemorrhage, dysphagia, tongue edema

*Rare* - gum hemorrhage, jaundice, fecal impaction, gamma glutamyl transpeptidase increased, hematemesis, cholestatic jaundice, hepatitis, hepatomegaly, leukoplakia of mouth, fatty liver deposit, melena

### **Endocrine**

*Rare* - hypothyroidism, hyperthyroidism, thyroiditis

### **Hemic and Lymphatic System**

*Infrequent* - anemia, ecchymosis, leukocytosis, leukopenia, eosinophilia, lymphadenopathy

*Rare* - thrombocytopenia, hypochromic anemia, lymphocytosis, monocytosis, basophilia, lymphedema, polycythemia, thrombocythemia

### **Metabolic and Nutritional Disorders**

*Infrequent* - thirst, transaminase increased, peripheral edema, hyperglycemia, creatine phosphokinase increased, alkaline phosphatase increased, hypercholesteremia, dehydration, lactic dehydrogenase increased, albuminuria, hypokalemia

*Rare* - BUN increased, creatinine increased, hyperlipemia, hypocholesteremia, hyperkalemia, hypochloremia, hypoglycemia, hyponatremia, hypoproteinemia, glucose tolerance decreased, gout, hyperchloremia, hyperuricemia, hypocalcemia, hypoglycemic reaction, hypomagnesemia, ketosis, respiratory alkalosis

### **Musculoskeletal System**

*Frequent* - myalgia



*Infrequent* - tenosynovitis

*Rare* - myopathy

### **Nervous System**

*Frequent* - agitation, extrapyramidal syndrome, tremor, dystonia, hypertonia, dyskinesia, hostility, twitching, paresthesia, confusion, vertigo, hypokinesia, hyperkinesia, abnormal gait, oculogyric crisis, hypesthesia, ataxia, amnesia, cogwheel rigidity, delirium, hypotonia, akinesia, dysarthria, withdrawal syndrome, buccoglossal syndrome, choreoathetosis, diplopia, incoordination, neuropathy

*Infrequent* - paralysis

*Rare* - myoclonus, nystagmus, torticollis, circumoral paresthesia, opisthotonos, reflexes increased, trismus

### **Respiratory System**

*Frequent* - dyspnea

*Infrequent* - pneumonia, epistaxis

*Rare* - hemoptysis, laryngismus

### **Skin and Appendages**

*Infrequent* - maculopapular rash, urticaria, alopecia, eczema, exfoliative dermatitis, contact dermatitis, vesiculobullous rash

### **Special Senses**

*Frequent* - fungal dermatitis

*Infrequent* - conjunctivitis, dry eyes, tinnitus, blepharitis, cataract, photophobia

*Rare* - eye hemorrhage, visual field defect, keratitis, keratoconjunctivitis

### **Urogenital System**

*Infrequent* - impotence, abnormal ejaculation, amenorrhea, hematuria, menorrhagia, female lactation, polyuria, urinary retention, metrorrhagia, male sexual dysfunction, anorgasmia, glycosuria

*Rare* - gynecomastia, vaginal hemorrhage, nocturia, oliguria, female sexual dysfunction, uterine hemorrhage

## **6.2 Postmarketing Experience**

The following adverse reactions have been identified during post approval use of ziprasidone hydrochloride. Because these reactions are reported voluntarily from a population of uncertain size, it is not always possible to reliably estimate their frequency or establish a causal relationship to drug exposure.

Adverse reaction reports not listed above that have been received since market introduction include rare occurrences of the following : *Cardiac Disorders*: Tachycardia, torsade de pointes (in the presence of multiple confounding factors), [see *Warnings and Precautions (5.2)*]; *Digestive System Disorders*: Swollen Tongue; *Reproductive System and Breast Disorders*: Galactorrhea, priapism; *Nervous System Disorders*: Facial Droop, neuroleptic malignant syndrome, serotonin syndrome (alone or in combination with serotonergic medicinal products), tardive dyskinesia; *Psychiatric Disorders*: Insomnia, mania/hypomania; *Skin and subcutaneous Tissue Disorders*: Allergic reaction (such as allergic dermatitis, angioedema, orofacial edema, urticaria), rash, Drug Reaction with Eosinophilia and Systemic Symptoms (DRESS); *Urogenital*

*System Disorders*: Enuresis, urinary incontinence; *Vascular Disorders*: Postural hypotension, syncope.

## 7 DRUG INTERACTIONS

Drug-drug interactions can be pharmacodynamic (combined pharmacologic effects) or pharmacokinetic (alteration of plasma levels). The risks of using ziprasidone in combination with other drugs have been evaluated as described below. All interactions studies have been conducted with oral ziprasidone. Based upon the pharmacodynamic and pharmacokinetic profile of ziprasidone, possible interactions could be anticipated:

### 7.1 Metabolic Pathway

Approximately two-thirds of ziprasidone is metabolized via a combination of chemical reduction by glutathione and enzymatic reduction by aldehyde oxidase. There are no known clinically relevant inhibitors or inducers of aldehyde oxidase. Less than one-third of ziprasidone metabolic clearance is mediated by cytochrome P450 catalyzed oxidation.

### 7.2 In Vitro Studies

An *in vitro* enzyme inhibition study utilizing human liver microsomes showed that ziprasidone had little inhibitory effect on CYP1A2, CYP2C9, CYP2C19, CYP2D6 and CYP3A4, and thus would not likely interfere with the metabolism of drugs primarily metabolized by these enzymes. There is little potential for drug interactions with ziprasidone due to displacement [see *Clinical Pharmacology (12.3)*].

### 7.3 Pharmacodynamic Interactions

Ziprasidone should not be used with any drug that prolongs the QT interval [see *Contraindications (4.1)*]. Given the primary CNS effects of ziprasidone, caution should be used when it is taken in combination with other centrally acting drugs. Because of its potential for inducing hypotension, ziprasidone may enhance the effects of certain antihypertensive agents. Ziprasidone may antagonize the effects of levodopa and dopamine agonists.

### 7.4 Pharmacokinetic Interactions

- Carbamazepine

Carbamazepine is an inducer of CYP3A4; administration of 200 mg twice daily for 21 days resulted in a decrease of approximately 35% in the AUC of ziprasidone. This effect may be greater when higher doses of carbamazepine are administered.

- Ketoconazole

Ketoconazole, a potent inhibitor of CYP3A4, at a dose of 400 mg QD for 5 days, increased the AUC and  $C_{max}$  of ziprasidone by about 35 to 40%. Other inhibitors of CYP3A4 would be expected to have similar effects.

- Cimetidine

Cimetidine at a dose of 800 mg QD for 2 days did not affect ziprasidone pharmacokinetics.

- Antacid

The co-administration of 30 mL of Maalox<sup>®</sup> with ziprasidone did not affect the pharmacokinetics of ziprasidone.

### 7.5 Lithium

Ziprasidone at a dose of 40 mg twice daily administered concomitantly with lithium at a dose of 450 mg twice daily for 7 days did not affect the steady-state level or renal clearance of lithium.

### 7.6 Oral Contraceptives

*In vivo* studies have revealed no effect of ziprasidone on the pharmacokinetics of estrogen or progesterone components. Ziprasidone at a dose of 20 mg twice daily did not affect the

pharmacokinetics of concomitantly administered oral contraceptives, ethinyl estradiol (0.03 mg) and levonorgestrel (0.15 mg).

### 7.7 Dextromethorphan

Consistent with *in vitro* results, a study in normal healthy volunteers showed that ziprasidone did not alter the metabolism of dextromethorphan, a CYP2D6 model substrate, to its major metabolite, dextrorphan. There was no statistically significant change in the urinary dextromethorphan/dextrorphan ratio.

### 7.8 Valproate

A pharmacokinetic interaction of ziprasidone with valproate is unlikely due to the lack of common metabolic pathways for the two drugs.

### 7.9 Other Concomitant Drug Therapy

Population pharmacokinetic analysis of schizophrenic patients enrolled in controlled clinical trials has not revealed evidence of any clinically significant pharmacokinetic interactions with benztropine, propranolol, or lorazepam.

### 7.10 Food Interaction

The absolute bioavailability of a 20 mg dose under fed conditions is approximately 60%. The absorption of ziprasidone is increased up to two-fold in the presence of food [*see Clinical Pharmacology (12.3)*].

## 8 USE IN SPECIFIC POPULATIONS

### 8.1 Pregnancy

Pregnancy Category C

In animal studies ziprasidone demonstrated developmental toxicity, including possible teratogenic effects at doses similar to human therapeutic doses. When ziprasidone was administered to pregnant rabbits during the period of organogenesis, an increased incidence of fetal structural abnormalities (ventricular septal defects and other cardiovascular malformations and kidney alterations) was observed at a dose of 30 mg/kg/day (3 times the MRHD of 200 mg/day on a mg/m<sup>2</sup> basis). There was no evidence to suggest that these developmental effects were secondary to maternal toxicity. The developmental no-effect dose was 10 mg/kg/day (equivalent to the MRHD on a mg/m<sup>2</sup> basis). In rats, embryofetal toxicity (decreased fetal weights, delayed skeletal ossification) was observed following administration of 10 to 160 mg/kg/day (0.5 to 8 times the MRHD on a mg/m<sup>2</sup> basis) during organogenesis or throughout gestation, but there was no evidence of teratogenicity. Doses of 40 and 160 mg/kg/day (2 and 8 times the MRHD on a mg/m<sup>2</sup> basis) were associated with maternal toxicity. The developmental no-effect dose was 5 mg/kg/day (0.2 times the MRHD on a mg/m<sup>2</sup> basis).

There was an increase in the number of pups born dead and a decrease in postnatal survival through the first 4 days of lactation among the offspring of female rats treated during gestation and lactation with doses of 10 mg/kg/day (0.5 times the MRHD on a mg/m<sup>2</sup> basis) or greater. Offspring developmental delays and neurobehavioral functional impairment were observed at doses of 5 mg/kg/day (0.2 times the MRHD on a mg/m<sup>2</sup> basis) or greater. A no-effect level was not established for these effects.

There are no adequate and well-controlled studies in pregnant women. Ziprasidone should be used during pregnancy only if the potential benefit justifies the potential risk to the fetus.

Non-teratogenic Effects

Neonates exposed to antipsychotic drugs, during the third trimester of pregnancy are at risk for extrapyramidal and/or withdrawal symptoms following delivery. There have been reports of agitation,

hypertonia, hypotonia, tremor, somnolence, respiratory distress and feeding disorder in these neonates. These complications have varied in severity; while in some cases symptoms have been self-limited, in other cases neonates have required intensive care unit support and prolonged hospitalization.

Ziprasidone hydrochloride should be used during pregnancy only if the potential benefit justifies the potential risk to the fetus.

## **8.2 Labor and Delivery**

The effect of ziprasidone on labor and delivery in humans is unknown.

## **8.3 Nursing Mothers**

It is not known whether ziprasidone or its metabolites are excreted in human milk. It is recommended that women receiving ziprasidone should not breastfeed.

## **8.4 Pediatric Use**

The safety and effectiveness of ziprasidone in pediatric patients have not been established.

## **8.5 Geriatric Use**

Of the total number of subjects in clinical studies of ziprasidone, 2.4 percent were 65 and over. No overall differences in safety or effectiveness were observed between these subjects and younger subjects, and other reported clinical experience has not identified differences in responses between the elderly and younger patients, but greater sensitivity of some older individuals cannot be ruled out. Nevertheless, the presence of multiple factors that might increase the pharmacodynamic response to ziprasidone, or cause poorer tolerance or orthostasis, should lead to consideration of a lower starting dose, slower titration, and careful monitoring during the initial dosing period for some elderly patients.

## **8.6 Renal Impairment**

Because ziprasidone is highly metabolized, with less than 1% of the drug excreted unchanged, renal impairment alone is unlikely to have a major impact on the pharmacokinetics of ziprasidone. The pharmacokinetics of ziprasidone following 8 days of 20 mg twice daily dosing were similar among subjects with varying degrees of renal impairment (n=27), and subjects with normal renal function, indicating that dosage adjustment based upon the degree of renal impairment is not required. Ziprasidone is not removed by hemodialysis.

## **8.7 Hepatic Impairment**

As ziprasidone is cleared substantially by the liver, the presence of hepatic impairment would be expected to increase the AUC of ziprasidone; a multiple-dose study at 20 mg twice daily for 5 days in subjects (n=13) with clinically significant (Childs-Pugh Class A and B) cirrhosis revealed an increase in AUC<sub>0-12</sub> of 13% and 34% in Childs-Pugh Class A and B, respectively, compared to a matched control group (n=14). A half-life of 7.1 hours was observed in subjects with cirrhosis compared to 4.8 hours in the control group.

## **8.8 Age and Gender Effects**

In a multiple-dose (8 days of treatment) study involving 32 subjects, there was no difference in the pharmacokinetics of ziprasidone between men and women or between elderly (>65 years) and young (18 to 45 years) subjects. Additionally, population pharmacokinetic evaluation of patients in controlled trials has revealed no evidence of clinically significant age or gender-related differences in the pharmacokinetics of ziprasidone. Dosage modifications for age or gender are, therefore, not recommended.

## **8.9 Smoking**

Based on *in vitro* studies utilizing human liver enzymes, ziprasidone is not a substrate for CYP1A2; smoking should therefore not have an effect on the pharmacokinetics of ziprasidone. Consistent with these *in vitro* results, population pharmacokinetic evaluation has not revealed any significant pharmacokinetic differences between smokers and nonsmokers.

## **9 DRUG ABUSE AND DEPENDENCE**

### **9.3 Dependence**

Ziprasidone has not been systematically studied, in animals or humans, for its potential for abuse, tolerance, or physical dependence. While the clinical trials did not reveal any tendency for drug-seeking behavior, these observations were not systematic and it is not possible to predict on the basis of this limited experience the extent to which ziprasidone will be misused, diverted, and/or abused once marketed. Consequently, patients should be evaluated carefully for a history of drug abuse, and such patients should be observed closely for signs of ziprasidone misuse or abuse (e.g., development of tolerance, increases in dose, drug-seeking behavior).

## **10 OVERDOSAGE**

### **10.1 Human Experience**

In premarketing trials involving more than 5400 patients and/or normal subjects, accidental or intentional overdosage of oral ziprasidone was documented in 10 patients. All of these patients survived without sequelae. In the patient taking the largest confirmed amount, 3,240 mg, the only symptoms reported were minimal sedation, slurring of speech, and transitory hypertension (200/95).

Adverse reactions reported with ziprasidone overdose included extrapyramidal symptoms, somnolence, tremor, and anxiety. [see *Adverse Reactions* (6.2)]

### **10.2 Management of Overdosage**

In case of acute overdosage, establish and maintain an airway and ensure adequate oxygenation and ventilation. Intravenous access should be established, and gastric lavage (after intubation, if patient is unconscious) and administration of activated charcoal together with a laxative should be considered. The possibility of obtundation, seizure, or dystonic reaction of the head and neck following overdose may create a risk of aspiration with induced emesis.

Cardiovascular monitoring should commence immediately and should include continuous electrocardiographic monitoring to detect possible arrhythmias. If antiarrhythmic therapy is administered, disopyramide, procainamide, and quinidine carry a theoretical hazard of additive QT-prolonging effects that might be additive to those of ziprasidone.

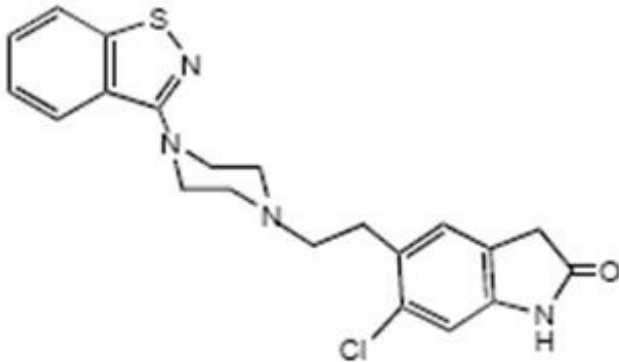
Hypotension and circulatory collapse should be treated with appropriate measures such as intravenous fluids. If sympathomimetic agents are used for vascular support, epinephrine and dopamine should not be used, since beta stimulation combined with  $\alpha_1$  antagonism associated with ziprasidone may worsen hypotension. Similarly, it is reasonable to expect that the alpha-adrenergic-blocking properties of bretylium might be additive to those of ziprasidone, resulting in problematic hypotension.

In cases of severe extrapyramidal symptoms, anticholinergic medication should be administered. There is no specific antidote to ziprasidone, and it is not dialyzable. The possibility of multiple drug involvement should be considered. Close medical supervision and monitoring should continue until the patient recovers.

## **11 DESCRIPTION**

Ziprasidone hydrochloride is available as capsules for oral administration. Ziprasidone is a

psychotropic agent that is chemically unrelated to phenothiazine or butyrophenone antipsychotic agents. It has a molecular weight of 412.94 (free base), with the following chemical name: 5-[2-[4-(1,2-benzisothiazol-3-yl)-1-piperazinyl]ethyl]-6-chloro-1,3-dihydro-2*H*-indol-2-one. The molecular formula of  $C_{21}H_{21}ClN_4OS$  (free base of ziprasidone) represents the following structural formula:



Ziprasidone hydrochloride capsules contain a monohydrochloride, monohydrate salt of ziprasidone. Chemically, ziprasidone hydrochloride monohydrate is 5-[2-[4-(1,2-benzisothiazol-3-yl)-1-piperazinyl]ethyl]-6-chloro-1,3-dihydro-2*H*-indol-2-one, monohydrochloride, monohydrate. The molecular formula is  $C_{21}H_{21}ClN_4OS \cdot HCl \cdot H_2O$  and its molecular weight is 467.42. Ziprasidone hydrochloride monohydrate is a white to slightly pink powder.

Ziprasidone hydrochloride capsules are supplied for oral administration in 20 mg (white/white), 40 mg (blue/white), 60 mg (pink/white), and 80 mg (blue/blue) capsules. Ziprasidone hydrochloride capsules contain ziprasidone hydrochloride monohydrate, lactose monohydrate, microcrystalline cellulose, sodium starch glycolate, talc and magnesium stearate, titanium dioxide, and gelatin. Additionally, the 40 mg capsule shell contains FD&C blue #1 and FD&C red #3, the 60 mg capsule shell contains D & C red #28, FD&C red #40 and FD&C yellow #6 and the 80 mg capsule shell contains FD&C blue #1 and FD&C red #3.

## 12 CLINICAL PHARMACOLOGY

### 12.1 Mechanism of Action

The mechanism of action of ziprasidone, as with other drugs having efficacy in schizophrenia, is unknown. However, it has been proposed that this drug's efficacy in schizophrenia is mediated through a combination of dopamine type 2 ( $D_2$ ) and serotonin type 2 ( $5HT_2$ ) antagonism.

### 12.2 Pharmacodynamics

Ziprasidone exhibited high *in vitro* binding affinity for the dopamine  $D_2$  and  $D_3$ , the serotonin  $5HT_{2A}$ ,  $5HT_{2C}$ ,  $5HT_{1A}$ ,  $5HT_{1D}$ , and  $\alpha_1$ -adrenergic receptors ( $K_i$ s of 4.8, 7.2, 0.4, 1.3, 3.4, 2, and 10 nM, respectively), and moderate affinity for the histamine  $H_1$  receptor ( $K_i=47$  nM). Ziprasidone functioned as an antagonist at the  $D_2$ ,  $5HT_{2A}$ , and  $5HT_{1D}$  receptors, and as an agonist at the  $5HT_{1A}$  receptor. Ziprasidone inhibited synaptic reuptake of serotonin and norepinephrine. No appreciable affinity was exhibited for other receptor/binding sites tested, including the cholinergic muscarinic receptor ( $IC_{50} >1$   $\mu M$ ). Antagonism at receptors other than dopamine and  $5HT_2$  with similar receptor affinities may explain some of the other therapeutic and side effects of ziprasidone. Ziprasidone's antagonism of histamine  $H_1$  receptors may explain the somnolence observed with this drug. Ziprasidone's antagonism of  $\alpha_1$ -adrenergic receptors may explain the orthostatic hypotension observed with this drug.

### 12.3 Pharmacokinetics

## Oral Pharmacokinetics

Ziprasidone's activity is primarily due to the parent drug. The multiple-dose pharmacokinetics of ziprasidone are dose-proportional within the proposed clinical dose range, and ziprasidone accumulation is predictable with multiple dosing. Elimination of ziprasidone is mainly via hepatic metabolism with a mean terminal half-life of about 7 hours within the proposed clinical dose range. Steady-state concentrations are achieved within one to three days of dosing. The mean apparent systemic clearance is 7.5 mL/min/kg. Ziprasidone is unlikely to interfere with the metabolism of drugs metabolized by cytochrome P450 enzymes.

***Absorption:*** Ziprasidone is well absorbed after oral administration, reaching peak plasma concentrations in 6 to 8 hours. The absolute bioavailability of a 20 mg dose under fed conditions is approximately 60%. The absorption of ziprasidone is increased up to two-fold in the presence of food.

***Distribution:*** Ziprasidone has a mean apparent volume of distribution of 1.5 L/kg. It is greater than 99% bound to plasma proteins, binding primarily to albumin and  $\alpha_1$ -acid glycoprotein. The *in vitro* plasma protein binding of ziprasidone was not altered by warfarin or propranolol, two highly protein-bound drugs, nor did ziprasidone alter the binding of these drugs in human plasma. Thus, the potential for drug interactions with ziprasidone due to displacement is minimal.

***Metabolism and Elimination:*** Ziprasidone is extensively metabolized after oral administration with only a small amount excreted in the urine (<1%) or feces (<4%) as unchanged drug. Ziprasidone is primarily cleared via three metabolic routes to yield four major circulating metabolites, benisothiazole (BITP) sulphoxide, BITP-sulphone, ziprasidone sulphoxide, and S-methyldihydroziprasidone. Approximately 20% of the dose is excreted in the urine, with approximately 66% being eliminated in the feces. Unchanged ziprasidone represents about 44% of total drug-related material in serum. *In vitro* studies using human liver subcellular fractions indicate that S-methyldihydroziprasidone is generated in two steps. These studies indicate that the reduction reaction is mediated primarily by chemical reduction by glutathione as well as by enzymatic reduction by aldehyde oxidase and the subsequent methylation is mediated by thiol methyltransferase. *In vitro* studies using human liver microsomes and recombinant enzymes indicate that CYP3A4 is the major CYP contributing to the oxidative metabolism of ziprasidone. CYP1A2 may contribute to a much lesser extent. Based on *in vivo* abundance of excretory metabolites, less than one-third of ziprasidone metabolic clearance is mediated by cytochrome P450 catalyzed oxidation and approximately two-thirds via reduction. There are no known clinically relevant inhibitors or inducers of aldehyde oxidase.

## 13 NONCLINICAL TOXICOLOGY

### 13.1 Carcinogenesis, Mutagenesis, Impairment of Fertility

#### Carcinogenesis

Lifetime carcinogenicity studies were conducted with ziprasidone in Long Evans rats and CD-1 mice. Ziprasidone was administered for 24 months in the diet at doses of 2, 6, or 12 mg/kg/day to rats, and 50, 100, or 200 mg/kg/day to mice (0.1 to 0.6 and 1 to 5 times the maximum recommended human dose [MRHD] of 200 mg/day on a mg/m<sup>2</sup> basis, respectively). In the rat study, there was no evidence of an increased incidence of tumors compared to controls. In male mice, there was no increase in incidence of tumors relative to controls. In female mice, there were dose-related increases in the incidences of pituitary gland adenoma and carcinoma, and mammary gland adenocarcinoma at all doses tested (50 to 200 mg/kg/day or 1 to 5 times the MRHD on a mg/m<sup>2</sup> basis). Proliferative changes in the pituitary and mammary glands of rodents have been observed following chronic administration of other antipsychotic agents and are considered to be prolactin-mediated. Increases in serum prolactin were observed in a 1-month dietary study in female, but not male, mice at 100 and 200 mg/kg/day (or 2.5 and 5 times the MRHD on a mg/m<sup>2</sup> basis). Ziprasidone had no effect on serum prolactin in rats in a 5-week dietary study at the doses that were used in the carcinogenicity study. The relevance for human risk of the findings of prolactin-mediated endocrine tumors in rodents is unknown [see *Warnings and Precautions (5.11)*].

## Mutagenesis

Ziprasidone was tested in the Ames bacterial mutation assay, the *in vitro* mammalian cell gene mutation mouse lymphoma assay, the *in vitro* chromosomal aberration assay in human lymphocytes, and the *in vivo* chromosomal aberration assay in mouse bone marrow. There was a reproducible mutagenic response in the Ames assay in one strain of *S. typhimurium* in the absence of metabolic activation. Positive results were obtained in both the *in vitro* mammalian cell gene mutation assay and the *in vitro* chromosomal aberration assay in human lymphocytes.

## Impairment of Fertility

Ziprasidone was shown to increase time to copulation in Sprague-Dawley rats in two fertility and early embryonic development studies at doses of 10 to 160 mg/kg/day (0.5 to 8 times the MRHD of 200 mg/day on a mg/m<sup>2</sup> basis). Fertility rate was reduced at 160 mg/kg/day (8 times the MRHD on a mg/m<sup>2</sup> basis). There was no effect on fertility at 40 mg/kg/day (2 times the MRHD on a mg/m<sup>2</sup> basis). The effect on fertility appeared to be in the female since fertility was not impaired when males given 160 mg/kg/day (8 times the MRHD on a mg/m<sup>2</sup> basis) were mated with untreated females. In a 6-month study in male rats given 200 mg/kg/day (10 times the MRHD on a mg/m<sup>2</sup> basis) there were no treatment-related findings observed in the testes.

## 14 CLINICAL STUDIES

### 14.1 Schizophrenia

The efficacy of oral ziprasidone in the treatment of schizophrenia was evaluated in 5 placebo-controlled studies, 4 short-term (4- and 6-week) trials and one maintenance trial. All trials were in adult inpatients, most of whom met DSM III-R criteria for schizophrenia. Each study included 2 to 3 fixed doses of ziprasidone as well as placebo. Four of the 5 trials were able to distinguish ziprasidone from placebo; one short-term study did not. Although a single fixed-dose haloperidol arm was included as a comparative treatment in one of the three short-term trials, this single study was inadequate to provide a reliable and valid comparison of ziprasidone and haloperidol.

Several instruments were used for assessing psychiatric signs and symptoms in these studies. The Brief Psychiatric Rating Scale (BPRS) and the Positive and Negative Syndrome Scale (PANSS) are both multi-item inventories of general psychopathology usually used to evaluate the effects of drug treatment in schizophrenia. The BPRS psychosis cluster (conceptual disorganization, hallucinatory behavior, suspiciousness, and unusual thought content) is considered a particularly useful subset for assessing actively psychotic schizophrenic patients. A second widely used assessment, the Clinical Global Impression (CGI), reflects the impression of a skilled observer, fully familiar with the manifestations of schizophrenia, about the overall clinical state of the patient. In addition, the Scale for Assessing Negative Symptoms (SANS) was employed for assessing negative symptoms in one trial.

#### **The results of the oral ziprasidone trials in schizophrenia follow:**

- In a 4-week, placebo-controlled trial (n=139) comparing 2 fixed doses of ziprasidone (20 and 60 mg twice daily) with placebo, only the 60 mg dose was superior to placebo on the BPRS total score and the CGI severity score. This higher dose group was not superior to placebo on the BPRS psychosis cluster or on the SANS.
- In a 6-week, placebo-controlled trial (n=302) comparing 2 fixed doses of ziprasidone (40 and 80 mg twice daily) with placebo, both dose groups were superior to placebo on the BPRS total score, the BPRS psychosis cluster, the CGI severity score and the PANSS total and negative subscale scores. Although 80 mg twice daily had a numerically greater effect than 40 mg twice daily, the difference was not statistically significant.
- In a 6-week, placebo-controlled trial (n=419) comparing 3 fixed doses of ziprasidone (20, 60, and 100 mg twice daily) with placebo, all three dose groups were superior to placebo on the PANSS total score, the BPRS total score, the BPRS psychosis cluster, and the CGI severity score. Only the



100 mg twice daily dose group was superior to placebo on the PANSS negative subscale score. There was no clear evidence for a dose-response relationship within the 20 mg twice daily to 100 mg twice daily dose range.

- In a 4-week, placebo-controlled trial (n=200) comparing 3 fixed doses of ziprasidone (5, 20, and 40 mg twice daily), none of the dose groups was statistically superior to placebo on any outcome of interest.
- A study was conducted in stable chronic or subchronic (CGI-S ≤5 at baseline) schizophrenic inpatients (n=294) who had been hospitalized for not less than two months. After a 3-day single-blind placebo run-in, subjects were randomized to one of 3 fixed doses of ziprasidone (20 mg, 40 mg, or 80 mg twice daily) or placebo and observed for relapse. Patients were observed for "impending psychotic relapse," defined as CGI-improvement score of ≥6 (much worse or very much worse) and/or scores ≥6 (moderately severe) on the hostility or uncooperativeness items of the PANSS on two consecutive days. Ziprasidone was significantly superior to placebo in time to relapse, with no significant difference between the different dose groups. There were insufficient data to examine population subsets based on age and race. Examination of population subsets based on gender did not reveal any differential responsiveness.

## 16 HOW SUPPLIED/STORAGE AND HANDLING

Ziprasidone hydrochloride capsules are differentiated by capsule color/size and are imprinted in black ink. Ziprasidone hydrochloride capsules are supplied for oral administration in :

20 mg- White cap and white body, size "4" hard gelatin capsule imprinted with "W991" in black ink on body, filled with white to pink color powder.

40 mg- Blue cap and white body, size "3" hard gelatin capsule imprinted with "W992" in black ink on body, filled with white to pink color powder.

60 mg- Pink cap and white body, size "2" hard gelatin capsule imprinted with "W993" in black ink on body, filled with white to pink color powder.

80 mg- Blue cap and blue body, size "1" hard gelatin capsule imprinted with "W994" in black ink on body, filled with white to pink color powder.

They are supplied in the following strengths and package configurations:

Ziprasidone Hydrochloride Capsules			
Package Configuration	Capsule Strength (mg)	NDC Code	Imprint
Bottles of 30	20	NDC-64679-991-01	991
Bottles of 60	20	NDC-64679-991-02	991
Bottles of 100	20	NDC-64679-991-03	991
Bottles of 500	20	NDC-64679-991-04	991
Carton of 80 (10 cards containing 8 Capsules each) Capsules	20	NDC-64679-991-06	991
Bottles of 30	40	NDC-64679-992-01	992
Bottles of 60	40	NDC-64679-992-02	992
Bottles of 100	40	NDC-64679-992-03	992
Bottles of 500	40	NDC-64679-992-04	992
Carton of 80 (10 cards containing 8 Capsules each) Capsules	40	NDC-64679-992-06	992
Bottles of 30	60	NDC-64679-993-01	993
Bottles of 60	60	NDC-64679-993-02	993

Bottles of 100	60	NDC-64679-993-03	993
Bottles of 500	60	NDC-64679-993-04	993
Carton of 80 (10 cards containing 8 Capsules each) Capsules	60	NDC-64679-993-06	993
Bottles of 30	80	NDC-64679-994-01	994
Bottles of 60	80	NDC-64679-994-02	994
Bottles of 100	80	NDC-64679-994-03	994
Bottles of 500	80	NDC-64679-994-04	994
Carton of 80 (10 cards containing 8 Capsules each) Capsules	80	NDC-64679-994-06	994

Ziprasidone hydrochloride capsules should be stored at 20° to 25°C (68° to 77°F) [see USP Controlled Room Temperature].

## 17 PATIENT COUNSELING INFORMATION

See FDA Approved Patient Labeling (17.4).

Please refer to the patient package insert. To assure safe and effective use of ziprasidone hydrochloride capsules, the information and instructions provided in the patient information should be discussed with patients.

### 17.1 Administration with Food

Patients should be instructed to take ziprasidone hydrochloride capsules with food for optimal absorption. The absorption of ziprasidone is increased up to two-fold in the presence of food [see *Drug Interactions (7.8) and Clinical Pharmacology (12.3)*].

### 17.2 QTc Prolongation

Patients should be advised to inform their health care providers of the following: History of QT prolongation; recent acute myocardial infarction; uncompensated heart failure; prescription of other drugs that have demonstrated QT prolongation; risk for significant electrolyte abnormalities; and history of cardiac arrhythmia [see *Contraindications (4.1) and Warnings and Precautions (5.2)*].

Patients should be instructed to report the onset of any conditions that put them at risk for significant electrolyte disturbances, hypokalemia in particular, including but not limited to the initiation of diuretic therapy or prolonged diarrhea. In addition, patients should be instructed to report symptoms such as dizziness, palpitations, or syncope to the prescriber [see *Warnings and Precautions (5.2)*].

### 17.3 Severe Cutaneous Adverse Reactions

Patients should be instructed to report to their health care provider at the earliest onset any signs or symptoms that may be associated with Drug Reaction with Eosinophilia and Systemic Symptoms (DRESS) or with severe cutaneous adverse reactions, such as Stevens-Johnson syndrome [see *Warnings and Precautions (5.4)*].

### 17.4 FDA Approved Patient Labeling

#### Manufactured by:

Wockhardt Limited

H-14/2, M.I.D.C. Area,

Waluj, Aurangabad,

Maharashtra, India.

**Distributed by:**

Wockhardt USA LLC.

20 Waterview Blvd.

Parsippany, NJ 07054

USA.

Rev.111116

**PATIENT SUMMARY OF INFORMATION ABOUT****Ziprasidone Hydrochloride Capsules****(zi PRAY si done hye" droe klor' ide)****Information for patients taking ziprasidone hydrochloride capsules or their caregivers**

This summary contains important information about ziprasidone hydrochloride capsules. It is not meant to take the place of your doctor's instructions. Read this information carefully before you take ziprasidone hydrochloride capsules. Ask your doctor or pharmacist if you do not understand any of this information or if you want to know more about ziprasidone hydrochloride capsules.

**What Is Ziprasidone Hydrochloride Capsule?**

Ziprasidone hydrochloride capsule is a type of prescription medicine called a psychotropic, also known as an atypical antipsychotic. Ziprasidone hydrochloride capsules can be used to treat symptoms of schizophrenia.

**Who Should Take Ziprasidone Hydrochloride Capsules?**

Only your doctor can know if ziprasidone hydrochloride capsule is right for you. Ziprasidone hydrochloride capsules may be prescribed for you if you have schizophrenia.

Symptoms of schizophrenia may include:

- hearing voices, seeing things, or sensing things that are not there (hallucinations)
- beliefs that are not true (delusions)
- unusual suspiciousness (paranoia)
- becoming withdrawn from family and friends

If you show a response to ziprasidone hydrochloride capsules, your symptoms may improve. If you continue to take ziprasidone hydrochloride capsules there is less chance of your symptoms returning. Do not stop taking the capsules even when you feel better without first discussing it with your doctor.

It is also important to remember that ziprasidone hydrochloride capsules should be taken with food.

**What is the most important safety information I should know about ziprasidone hydrochloride capsules?**

**Ziprasidone hydrochloride capsule is not approved for the treatment of patients with dementia-related psychosis. Elderly patients with a diagnosis of psychosis related to dementia treated with antipsychotics are at an increased risk of death when compared to patients who are treated with placebo (a sugar pill).**

Ziprasidone hydrochloride capsule is an effective drug to treat the symptoms of schizophrenia. However, one potential side effect is that it may change the way the electrical current in your heart works more than some other drugs. The change is small and it is not known whether this will be harmful, but some other drugs that cause this kind of change have in rare cases caused dangerous heart rhythm abnormalities. Because of this, ziprasidone hydrochloride capsules should be used only after your doctor has considered this risk for ziprasidone hydrochloride capsules against the risks and benefits of other medications available for treating schizophrenia.

**Your risk of dangerous changes in heart rhythm can be increased if you are taking certain other medicines and if you already have certain abnormal heart conditions. Therefore, it is important to tell your doctor about any other medicines that you take, including non-prescription medicines, supplements, and herbal medicines. You must also tell your doctor about any heart problems you have or have had.**

### **Who should NOT take ziprasidone hydrochloride capsules?**

Elderly patients with a diagnosis of psychosis related to dementia. Ziprasidone hydrochloride capsule is not approved for the treatment of these patients.

Anything that can increase the chance of a heart rhythm abnormality should be avoided. Therefore, do not take ziprasidone hydrochloride capsules if:

- You have certain heart diseases, for example, long QT syndrome, a recent heart attack, severe heart failure, or certain irregularities of heart rhythm (discuss the specifics with your doctor)
- You are currently taking medications that should not be taken in combination with ziprasidone, for example, dofetilide, sotalol, quinidine, other Class Ia and III anti-arrhythmics, mesoridazine, thioridazine, chlorpromazine, droperidol, pimozide, sparfloxacin, gatifloxacin, moxifloxacin, halofantrine, mefloquine, pentamidine, arsenic trioxide, levomethadyl acetate, dolasetron mesylate, probucol or tacrolimus.

### **What To Tell Your Doctor Before You Start Ziprasidone Hydrochloride Capsules**

Only your doctor can decide if ziprasidone hydrochloride capsule is right for you. Before you start ziprasidone hydrochloride capsules, be sure to tell your doctor if you:

- have had any problem with the way your heart beats or any heart related illness or disease
- any family history of heart disease, including recent heart attack
- have had any problem with fainting or dizziness
- are taking or have recently taken any prescription medicines
- are taking any over-the-counter medicines you can buy without a prescription, including natural/herbal remedies
- have had any problems with your liver
- are pregnant, might be pregnant, or plan to get pregnant
- are breast feeding
- are allergic to any medicines
- have ever had an allergic reaction to ziprasidone or any of the other ingredients of ziprasidone hydrochloride capsules. Ask your doctor or pharmacist for a list of these ingredients
- have low levels of potassium or magnesium in your blood

Your doctor may want you to get additional laboratory tests to see if ziprasidone hydrochloride capsule is an appropriate treatment for you.

### **Ziprasidone Hydrochloride Capsules and Other Medicines**

There are some medications that may be unsafe to use when taking ziprasidone hydrochloride capsules, and there are some medicines that can affect how well ziprasidone hydrochloride capsules works. While you are on ziprasidone hydrochloride capsules, check with your doctor before starting any new prescription or over-the-counter medications, including natural/herbal remedies.

### **How To Take Ziprasidone Hydrochloride Capsules**

- Take ziprasidone hydrochloride capsules only as directed by your doctor.
- Swallow the capsules whole.
- Take ziprasidone hydrochloride capsules with food.
- It is best to take ziprasidone hydrochloride capsules at the same time each day.
- Ziprasidone hydrochloride capsules may take a few weeks to work. It is important to be patient.
- Do not change your dose or stop taking your medicine without your doctor's approval.

- Remember to keep taking your capsules, even when you feel better.

### **Possible Side Effects**

Because these problems could mean you're having a heart rhythm abnormality, contact your doctor **IMMEDIATELY** if you:

- Faint or lose consciousness
- Feel a change in the way that your heart beats (palpitations)

Common side effects of ziprasidone hydrochloride capsules include the following and should also be discussed with your doctor if they occur:

- Feeling unusually tired or sleepy
- Nausea or upset stomach
- Constipation
- Dizziness
- Restlessness
- Abnormal muscle movements, including tremor, shuffling, and uncontrolled involuntary movements
- Diarrhea
- Rash
- Increased cough / runny nose

If you develop any side effects that concern you, talk with your doctor. It is particularly important to tell your doctor if you have diarrhea, vomiting, or another illness that can cause you to lose fluids. Your doctor may want to check your blood to make sure that you have the right amount of important salts after such illnesses.

For a list of all side effects that have been reported, ask your doctor or pharmacist for the ziprasidone hydrochloride capsules Professional Package Insert.

### **What To Do For An Overdose**

In case of an overdose, call your doctor or poison control center right away or go to the nearest emergency room.

### **Other Important Safety Information**

A serious condition called neuroleptic malignant syndrome (NMS) can occur with all antipsychotic medications including ziprasidone hydrochloride capsules. Signs of NMS include very high fever, rigid muscles, shaking, confusion, sweating, or increased heart rate and blood pressure. NMS is a rare but serious side effect that could be fatal. Therefore, tell your doctor if you experience any of these signs.

Delayed-onset drug reaction called drug reaction with eosinophilia and systemic symptoms (DRESS) can occur with ziprasidone. Signs of DRESS may include rash, fever, and swollen lymph nodes. Other severe cutaneous adverse reactions (SCAR), such as Stevens-Johnson syndrome can occur with ziprasidone. Signs of Stevens-Johnson syndrome may include rash with blisters which could include ulcers in mouth, skin shedding, fever and target-like spots in the skin. DRESS and other SCAR are sometimes fatal; therefore, tell your doctor immediately if you experience any of these signs.

Adverse reactions related to high blood sugar (hyperglycemia), sometimes serious, have been reported in patients treated with atypical antipsychotics. There have been few reports of hyperglycemia or diabetes in patients treated with ziprasidone hydrochloride capsules, and it is not known if ziprasidone hydrochloride capsule is associated with these reactions. Patients treated with an atypical antipsychotic should be monitored for symptoms of hyperglycemia.

Dizziness caused by a drop in your blood pressure may occur with ziprasidone hydrochloride capsules, especially when you first start taking this medication or when the dose is increased. If this happens, be careful not to stand up too quickly, and talk to your doctor about the problem.

Before taking ziprasidone hydrochloride capsules, tell your doctor if you are pregnant or plan on becoming pregnant. It is advised that you don't breast feed an infant if you are taking ziprasidone hydrochloride capsules.

Because ziprasidone hydrochloride capsules can cause sleepiness, be careful when operating machinery or driving a motor vehicle.

Since medications of the same drug class as ziprasidone hydrochloride capsules may interfere with the ability of the body to adjust to heat, it is best to avoid situations involving high temperature or humidity.

It is best to avoid consuming alcoholic beverages while taking ziprasidone hydrochloride capsules.

Call your doctor **immediately** if you take more than the amount of ziprasidone hydrochloride capsules prescribed by your doctor.

Ziprasidone hydrochloride capsule has not been shown to be safe or effective in the treatment of children and teenagers under the age of 18 years old.

**Keep ziprasidone hydrochloride capsules and all medicines out of the reach of children.**

### **How To Store Ziprasidone Hydrochloride Capsules**

Ziprasidone hydrochloride capsules should be stored at 20° to 25°C (68° to 77°F) [see USP Controlled Room Temperature].

### **For More Information About Ziprasidone Hydrochloride Capsules**

This sheet is only a summary. Ziprasidone hydrochloride capsule is a prescription medicine and only your doctor can decide if it is right for you. If you have any questions or want more information about ziprasidone hydrochloride capsules, talk with your doctor or pharmacist.

#### **Manufactured by:**

Wockhardt Limited  
H-14/2, M.I.D.C. Area,  
Waluj, Aurangabad,  
Maharashtra, India.

#### **Distributed by:**

Wockhardt USA LLC.  
20 Waterview Blvd.  
Parsippany, NJ 07054  
USA.

Rev.111116

### **PACKAGE LABEL.PRINCIPAL DISPLAY PANEL**

DRUG: Ziprasidone Hydrochloride

GENERIC: Ziprasidone Hydrochloride

DOSAGE: Capsules

ADMINISTRATION: Oral

NDC: 64679-991-01

STRENGTH: 20 mg

COLOR: White Cap, White Body

SHAPE: Capsule

SCORE: no score

SIZE: 14 mm

IMPRINT: W991

QTY: 30 Capsules

\*Each capsule contains ziprasidone hydrochloride monohydrate equivalent to 20 mg ziprasidone.

**DOSAGE AND USE:** See accompanying prescribing information.

Store at 20° to 25°C (68° to 77°F) [see USP Controlled Room Temperature].

Rev.111116

NDC 64679-991-01

**Ziprasidone HCl Capsules**

**20 mg\***

**30 Capsules** Rx only

**WOCKHARDT** | LIFE WINS

**Manufactured by:**  
Wockhardt Limited  
H-14/2, M.I.D.C. Area, Waluj,  
Aurangabad, Maharashtra, India.

**Distributed by:**  
Wockhardt USA LLC,  
20 Waterview Blvd,  
Parsippany, NJ 07054 USA.

(01)00364679991015

~~NON VARNISH AREA~~

Size: 20 mm x 21 mm

LOT:  
EXP.:

DRUG: Ziprasidone Hydrochloride

GENERIC: Ziprasidone Hydrochloride

DOSAGE: Capsules

ADMINSTRATION: Oral

NDC: 64679-992-02

STRENGTH: 40 mg

COLOR: Blue Cap, White Body

SHAPE: Capsule

SCORE: no score

SIZE: 16 mm

IMPRINT: W992

QTY: 60 Capsules

\*Each capsule contains ziprasidone hydrochloride monohydrate equivalent to 40 mg ziprasidone.

**DOSAGE AND USE:** See accompanying prescribing information.

Store at 20° to 25°C (68° to 77°F) [see USP Controlled Room Temperature].

Rev.111116

NDC 64679-992-02

**Ziprasidone HCl Capsules**

**40 mg\***

**60 Capsules** Rx only

**WOCKHARDT** | LIFE WINS

**Manufactured by:**  
Wockhardt Limited  
H-14/2, M.I.D.C. Area, Waluj,  
Aurangabad, Maharashtra, India.

**Distributed by:**  
Wockhardt USA LLC,  
20 Waterview Blvd,  
Parsippany, NJ 07054 USA.

(01)00364679992029

~~NON VARNISH AREA~~

Size: 20 mm x 21 mm

LOT:  
EXP.:

DRUG: Ziprasidone Hydrochloride





\*Each capsule contains ziprasidone hydrochloride monohydrate equivalent to 80 mg ziprasidone.

NDC 64679-994-04

# Ziprasidone HCl Capsules

**80 mg\***

**DOSAGE AND USE:** See accompanying prescribing information.

Store at 20° to 25°C (68° to 77°F) [see USP Controlled Room Temperature].

**PHARMACIST:** Please dispense with Patient Information Leaflet provided separately.

**500 Capsules**

**Rx only**



Rev.111116

Distributed by:  
Wockhardt USA LLC,  
20 Waterview Blvd,  
Parsippany, NJ 07054 USA.

Manufactured by:  
Wockhardt Limited  
H-14/2, M.I.D.C. Area,  
Wali, Aurangabad,  
Maharashtra, India.



**NON VARNISH AREA**

Size: 16.5 mm x 57 mm

LOT:

EXP:

## ZIPRASIDONE HYDROCHLORIDE

ziprasidone hydrochloride capsule

### Product Information

<b>Product Type</b>	HUMAN PRESCRIPTION DRUG	<b>Item Code (Source)</b>	NDC:64679-991
<b>Route of Administration</b>	ORAL		

### Active Ingredient/Active Moiety

Ingredient Name	Basis of Strength	Strength
ZIPRASIDONE HYDROCHLORIDE (UNII: 216X0810RU) (ZIPRASIDONE - UNII:6UKA5VEJ6X)	ZIPRASIDONE	20 mg

### Inactive Ingredients

Ingredient Name	Strength
CELLULOSE, MICROCRYSTALLINE (UNII: OP1R32D61U)	
GELATIN (UNII: 2G86QN327L)	
LACTOSE MONOHYDRATE (UNII: EWQ57Q8I5X)	
MAGNESIUM STEARATE (UNII: 70097M6I30)	
SODIUM STARCH GLYCOLATE TYPE A POTATO (UNII: 5856J3G2A2)	
TALC (UNII: 7SEV7J4R1U)	
TITANIUM DIOXIDE (UNII: 15FIX9V2JP)	

### Product Characteristics

<b>Color</b>	WHITE (cap) , WHITE (body)	<b>Score</b>	no score
<b>Shape</b>	CAPSULE (size 4 hard gelatin capsule)	<b>Size</b>	14mm
<b>Flavor</b>		<b>Imprint Code</b>	W991
<b>Contains</b>			

### Packaging

#	Item Code	Package Description	Marketing Start Date	Marketing End Date
1	NDC:64679-991-01	30 in 1 BOTTLE; Type 0: Not a Combination Product	09/01/2012	
2	NDC:64679-991-02	60 in 1 BOTTLE; Type 0: Not a Combination Product	09/01/2012	
3	NDC:64679-991-03	100 in 1 BOTTLE; Type 0: Not a Combination Product	09/01/2012	
4	NDC:64679-991-04	500 in 1 BOTTLE; Type 0: Not a Combination Product	09/01/2012	
5	NDC:64679-991-06	10 in 1 CARTON	09/01/2012	
5		8 in 1 BLISTER PACK; Type 0: Not a Combination Product		

## Marketing Information

Marketing Category	Application Number or Monograph Citation	Marketing Start Date	Marketing End Date
ANDA	ANDA090348	09/01/2012	

## ZIPRASIDONE HYDROCHLORIDE

ziprasidone hydrochloride capsule

### Product Information

Product Type	HUMAN PRESCRIPTION DRUG	Item Code (Source)	NDC:64679-992
Route of Administration	ORAL		

### Active Ingredient/Active Moiety

Ingredient Name	Basis of Strength	Strength
ZIPRASIDONE HYDROCHLORIDE (UNII: 216X0810RU) (ZIPRASIDONE - UNII:6UKA5VEJ6X)	ZIPRASIDONE	40 mg

### Inactive Ingredients

Ingredient Name	Strength
CELLULOSE, MICROCRYSTALLINE (UNII: OP1R32D61U)	
FD&C BLUE NO. 1 (UNII: H3R47K3TBD)	
FD&C RED NO. 3 (UNII: PN2ZH5LOQY)	
GELATIN (UNII: 2G86QN327L)	
LACTOSE MONOHYDRATE (UNII: EWQ57Q8I5X)	
MAGNESIUM STEARATE (UNII: 70097M6I30)	
SODIUM STARCH GLYCOLATE TYPE A POTATO (UNII: 5856J3G2A2)	
TALC (UNII: 7SEV7J4R1U)	
TITANIUM DIOXIDE (UNII: 15FIX9V2JP)	

### Product Characteristics

Color	BLUE (cap) , WHITE (body)	Score	no score
Shape	CAPSULE (size 3 hard gelatin capsule)	Size	16mm
Flavor		Imprint Code	W992
Contains			

## Packaging

#	Item Code	Package Description	Marketing Start Date	Marketing End Date
1	NDC:64679-992-01	30 in 1 BOTTLE; Type 0: Not a Combination Product	09/01/2012	
2	NDC:64679-992-02	60 in 1 BOTTLE; Type 0: Not a Combination Product	09/01/2012	
3	NDC:64679-992-03	100 in 1 BOTTLE; Type 0: Not a Combination Product	09/01/2012	
4	NDC:64679-992-04	500 in 1 BOTTLE; Type 0: Not a Combination Product	09/01/2012	
5	NDC:64679-992-06	10 in 1 CARTON	09/01/2012	
5		8 in 1 BLISTER PACK; Type 0: Not a Combination Product		

## Marketing Information

Marketing Category	Application Number or Monograph Citation	Marketing Start Date	Marketing End Date
ANDA	ANDA090348	09/01/2012	

## ZIPRASIDONE HYDROCHLORIDE

ziprasidone hydrochloride capsule

### Product Information

Product Type	HUMAN PRESCRIPTION DRUG	Item Code (Source)	NDC:64679-993
Route of Administration	ORAL		

### Active Ingredient/Active Moiety

Ingredient Name	Basis of Strength	Strength
ZIPRASIDONE HYDROCHLORIDE (UNII: 216X081ORU) (ZIPRASIDONE - UNII:6UKA5VEJ6X)	ZIPRASIDONE	60 mg

### Inactive Ingredients

Ingredient Name	Strength
CELLULOSE, MICROCRYSTALLINE (UNII: OP1R32D61U)	
D&C RED NO. 28 (UNII: 767IP0Y5NH)	
FD&C RED NO. 40 (UNII: WZB9127XOA)	
FD&C YELLOW NO. 6 (UNII: H77VEI93A8)	
GELATIN (UNII: 2G86QN327L)	
LACTOSE MONOHYDRATE (UNII: EWQ57Q8I5X)	
MAGNESIUM STEARATE (UNII: 70097M6I30)	
SODIUM STARCH GLYCOLATE TYPE A POTATO (UNII: 5856J3G2A2)	
TALC (UNII: 7SEV7J4R1U)	
TITANIUM DIOXIDE (UNII: 15FIX9V2JP)	

### Product Characteristics

Color	PINK (cap) , WHITE (body)	Score	no score
Shape	CAPSULE (size 2 hard gelatin capsule)	Size	18mm
Flavor		Imprint Code	W993
Contains			

## Packaging

#	Item Code	Package Description	Marketing Start Date	Marketing End Date
1	NDC:64679-993-01	30 in 1 BOTTLE; Type 0: Not a Combination Product	09/01/2012	
2	NDC:64679-993-02	60 in 1 BOTTLE; Type 0: Not a Combination Product	09/01/2012	
3	NDC:64679-993-03	100 in 1 BOTTLE; Type 0: Not a Combination Product	09/01/2012	
4	NDC:64679-993-04	500 in 1 BOTTLE; Type 0: Not a Combination Product	09/01/2012	
5	NDC:64679-993-06	10 in 1 CARTON	09/01/2012	
5		8 in 1 BLISTER PACK; Type 0: Not a Combination Product		

## Marketing Information

Marketing Category	Application Number or Monograph Citation	Marketing Start Date	Marketing End Date
ANDA	ANDA090348	09/01/2012	

## ZIPRASIDONE HYDROCHLORIDE

ziprasidone hydrochloride capsule

### Product Information

Product Type	HUMAN PRESCRIPTION DRUG	Item Code (Source)	NDC:64679-994
Route of Administration	ORAL		

### Active Ingredient/Active Moiety

Ingredient Name	Basis of Strength	Strength
ZIPRASIDONE HYDROCHLORIDE (UNII: 216X0810RU) (ZIPRASIDONE - UNII:6UKA5VEJ6X)	ZIPRASIDONE	80 mg

### Inactive Ingredients

Ingredient Name	Strength
CELLULOSE, MICROCRYSTALLINE (UNII: OP1R32D61U)	
FD&C BLUE NO. 1 (UNII: HBR47K3TBD)	
FD&C RED NO. 3 (UNII: PN2ZH5LOQY)	
GELATIN (UNII: 2G86QN327L)	
LACTOSE MONOHYDRATE (UNII: EWQ57Q8I5X)	
MAGNESIUM STEARATE (UNII: 70097M6I30)	
SODIUM STARCH GLYCOLATE TYPE A POTATO (UNII: 5856J3G2A2)	
TALC (UNII: 7SEV7J4R1U)	
TITANIUM DIOXIDE (UNII: 15FIX9V2JP)	

### Product Characteristics

Color	BLUE (cap) , BLUE (body)	Score	no score
Shape	CAPSULE (size 1 hard gelatin capsule)	Size	19mm

<b>Flavor</b>		<b>Imprint Code</b>	W994
<b>Contains</b>			

### Packaging

#	Item Code	Package Description	Marketing Start Date	Marketing End Date
1	NDC:64679-994-01	30 in 1 BOTTLE; Type 0: Not a Combination Product	09/01/2012	
2	NDC:64679-994-02	60 in 1 BOTTLE; Type 0: Not a Combination Product	09/01/2012	
3	NDC:64679-994-03	100 in 1 BOTTLE; Type 0: Not a Combination Product	09/01/2012	
4	NDC:64679-994-04	500 in 1 BOTTLE; Type 0: Not a Combination Product	09/01/2012	
5	NDC:64679-994-06	10 in 1 CARTON	09/01/2012	
5		8 in 1 BLISTER PACK; Type 0: Not a Combination Product		

### Marketing Information

Marketing Category	Application Number or Monograph Citation	Marketing Start Date	Marketing End Date
ANDA	ANDA090348	09/01/2012	

**Labeler** - Wockhardt USA LLC. (170508365)

**Registrant** - Wockhardt Limited (650069115)

### Establishment

Name	Address	ID/FEI	Business Operations
Wockhardt Limited		676257570	ANALYSIS(64679-991, 64679-992, 64679-993, 64679-994) , MANUFACTURE(64679-991, 64679-992, 64679-993, 64679-994) , LABEL(64679-991, 64679-992, 64679-993, 64679-994) , PACK(64679-991, 64679-992, 64679-993, 64679-994)

Revised: 12/2017

Wockhardt USA LLC.