

**ANTI-DIARRHEAL- loperamide hcl tablet**  
**Family Dollar Services Inc**

-----  
**Family Wellness 44-375**

***Active ingredient (in each caplet)***

Loperamide HCl 2 mg

***Purpose***

Anti-diarrheal

***Use***

controls symptoms of diarrhea, including Travelers' Diarrhea

***Warnings***

**Allergy alert:** Do not use if you have ever had a rash or other allergic reaction to loperamide HCl.

**Heart alert:** Taking more than directed can cause serious heart problems or death.

**Do not use**

if you have bloody or black stool.

**Ask a doctor before use if you have**

- a fever
- mucus in the stool
- a history of liver disease
- a history of abnormal heart rhythm

**Ask a doctor or pharmacist before use if you are**

taking a prescription drug. Loperamide may interact with certain prescription drugs.

**When using this product,**

tiredness, drowsiness, or dizziness may occur. Be careful when driving or operating machinery.

**Stop use and ask a doctor if**

- symptoms get worse
- diarrhea lasts for more than 2 days
- you get abdominal swelling or bulging. These may be signs of a serious condition.

**If pregnant or breast-feeding,**

ask a health professional before use.

**Keep out of reach of children.**

In case of overdose, get medical help or contact a Poison Control Center right away.

**Directions**

- **drink plenty of clear fluids to help prevent dehydration caused by diarrhea**
- find right dose on chart. If possible, use weight to dose; otherwise, use age.

adults and children 12 years and over	2 caplets after the first loose stool; 1 caplet after each subsequent loose stool; but no more than 4 caplets in 24 hours
children 9-11 years (60-95 lbs)	1 caplet after the first loose stool; 1/2 caplet after each subsequent loose stool; but no more than 3 caplets in 24 hours
children 6-8 years (48-59 lbs)	1 caplet after the first loose stool; 1/2 caplet after each subsequent loose stool; but no more than 2 caplets in 24 hours
children 2-5 years (34-47 lbs)	ask a doctor
children under 2 years (up to 33 lbs)	do not use

**Other information**

- **TAMPER EVIDENT: DO NOT USE IF OUTER PACKAGE IS OPENED OR BLISTER IS TORN OR BROKEN**
- store between 20°-25°C (68°-77°F)
- see end flap for expiration date and lot number

**Inactive ingredients**

corn starch, D&C yellow #10 aluminum lake, dibasic calcium phosphate dihydrate, FD&C blue #1 aluminum lake, magnesium stearate, microcrystalline cellulose, silicon dioxide

**Questions or comments?**

**Call 1-800-426-9391** 8:30 AM-4:00 PM ET, Monday-Friday

**Principal Display Panel**

**FAMILY  
Wellness™**

\*COMPARE TO THE ACTIVE  
INGREDIENT IN IMODIUM® A-D

**ANTI-  
DIARRHEAL**  
**Loperamide HCl Tablets, 2 mg**  
**Anti-diarrheal**

Controls the symptoms of diarrhea

**24** CAPLETS

ACTUAL SIZE

**NDC 55319-375-08**

**TAMPER EVIDENT: DO NOT USE IF PACKAGE IS  
OPENED OR IF BLISTER UNIT IS TORN, BROKEN  
OR SHOWS ANY SIGNS OF TAMPERING**

\*This product is not manufactured or distributed by Kenvue Inc.,  
owner of the registered trademark Imodium<sup>®</sup> A-D.

50844 REV0619A37508

**DISTRIBUTED BY: MIDWOOD BRANDS LLC,**  
500 VOLVO PARKWAY, CHESAPEAKE, VA 23320 USA

**NOT 100% SATISFIED?** Return within 30 days to the store  
of purchase for a refund (with receipt) or exchange.

**1.** To open, tear  
at perforations and  
remove a section.

**2.** Use ✂ to cut  
through plastic  
for caplet.

**Drug Facts**

**Active ingredient (in each caplet)**  
Loperamide HCl 2 mg

**Purpose**  
Anti-diarrheal

**Use**  
controls symptoms of diarrhea, including Travelers' Diarrhea

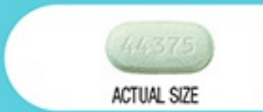
KEEP OUTER PACKAGE FOR COMPLETE PRODUCT INFORMATION

FAMILY  
**Wellness™**

\*COMPARE TO THE ACTIVE  
INGREDIENT IN IMODIUM® A-D

# ANTI-DIARRHEAL

Loperamide HCl Tablets, 2 mg  
Anti-diarrheal  
Controls the symptoms of diarrhea



**24 CAPLETS**

NDC 55319-375-08

1. To open, tear at perforations and remove a section.
2. Use  $\frac{1}{2}$  to cut through plastic for caplet.

\*This product is not manufactured or distributed by Kenvue Inc., owner of the registered trademark Imodium® A-D.  
50044 REV0619A37508  
DISTRIBUTED BY: MIDWOOD BRANDS LLC,  
500 VOLVO PKWY, CHESAPEAKE, VA 23320 USA  
NOT 100% SATISFIED? Return within 30 days to the store of purchase for a refund (with receipt) or exchange.

No print/No varnish  
Lot & Exp date

TAMPER EVIDENT: DO NOT USE IF PACKAGE IS OPENED OR IF BLISTER UNIT IS TORN, BROKEN OR SHOWS ANY SIGNS OF TAMPERING



SKU 901527

**Drug Facts (continued)**

■ see end flap for expiration date and lot number ■ store between 20°-25°C (68°-77°F)

**Inactive ingredients**  
corn starch, D&C yellow #10 aluminum lake, dibasic calcium phosphate dihydrate, F&D blue #1 aluminum lake, magnesium stearate, microcrystalline cellulose, silicon dioxide

**Questions or comments?** Call 1-800-426-9391 8:30 AM-4:00 PM ET, Monday-Friday

**Other information**  
■ TAMPER EVIDENT: DO NOT USE IF OUTER PACKAGE IS OPENED OR BLISTER IS TORN OR BROKEN

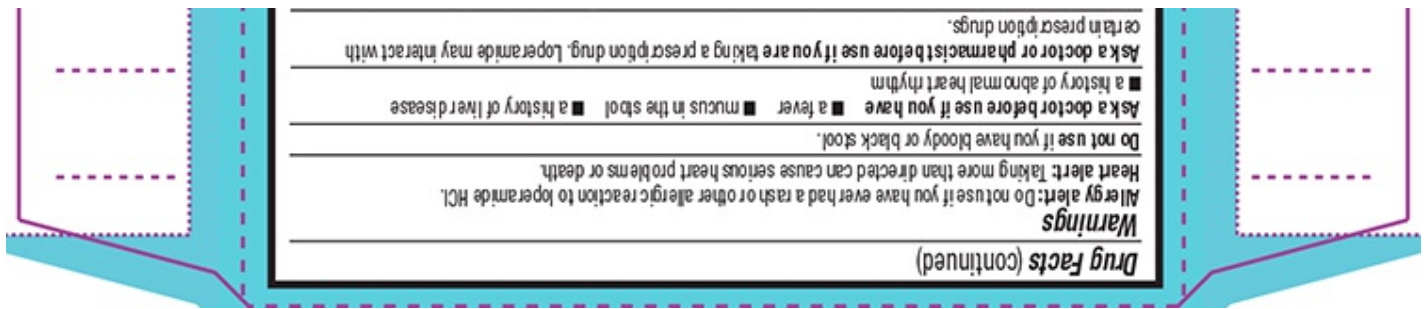
**Directions** ■ drink plenty of clear fluids to help prevent dehydration caused by diarrhea  
■ find right dose on chart. If possible, use weight to dose; otherwise, use age.

adults and children 12 years and over	2 caplets after the first loose stool; 1 caplet after each subsequent loose stool but no more than 4 caplets in 24 hours
children 9-11 years (60-95 lbs)	1 caplet after the first loose stool; 1/2 caplet after each subsequent loose stool but no more than 3 caplets in 24 hours
children 6-8 years (45-59 lbs)	1 caplet after the first loose stool; 1/2 caplet after each subsequent loose stool but no more than 2 caplets in 24 hours
children 2-5 years (34-47 lbs)	ask a doctor
children under 2 years (up to 33 lbs)	do not use

**Stop use and ask a doctor if** ■ symptoms get worse ■ diarrhea lasts for more than 2 days ■ you get abdominal swelling or binging. These may be signs of a serious condition.  
■ pregnant or breast-feeding, ask a health professional before use.  
Keep out of reach of children. In case of overdose, get medical help or contact a Poison Control Center right away.

When using this product, tiredness, drowsiness, or dizziness may occur. Be careful when driving or operating machinery.

B-0500-375-08-NR  
REV0619A37508



## Family Wellness 44-375

### ANTI-DIARRHEAL

loperamide hcl tablet

#### Product Information

<b>Product Type</b>	HUMAN OTC DRUG	<b>Item Code (Source)</b>	NDC:55319-375
<b>Route of Administration</b>	ORAL		

#### Active Ingredient/Active Moiety

Ingredient Name	Basis of Strength	Strength
<b>LOPERAMIDE HYDROCHLORIDE</b> (UNII: 77TI35393C) (LOPERAMIDE - UNII:6X9OC3H4II)	LOPERAMIDE HYDROCHLORIDE	2 mg

#### Inactive Ingredients

Ingredient Name	Strength
<b>STARCH, CORN</b> (UNII: O8232NY3SJ)	
<b>D&amp;C YELLOW NO. 10 ALUMINUM LAKE</b> (UNII: CQ3XH3DET6)	
<b>DIBASIC CALCIUM PHOSPHATE DIHYDRATE</b> (UNII: O7TSZ97GEP)	
<b>FD&amp;C BLUE NO. 1 ALUMINUM LAKE</b> (UNII: J9EQA3S2JM)	
<b>MAGNESIUM STEARATE</b> (UNII: 70097M6I30)	
<b>MICROCRYSTALLINE CELLULOSE</b> (UNII: OP1R32D61U)	
<b>SILICON DIOXIDE</b> (UNII: ETJ7Z6XBU4)	

#### Product Characteristics

<b>Color</b>	green	<b>Score</b>	2 pieces
<b>Shape</b>	OVAL	<b>Size</b>	10mm
<b>Flavor</b>		<b>Imprint Code</b>	44;375
<b>Contains</b>			

#### Packaging

#	Item Code	Package Description	Marketing Start Date	Marketing End Date
1	NDC:55319-375-08	4 in 1 CARTON	05/03/2005	
1		6 in 1 BLISTER PACK; Type 0: Not a Combination		

1		Product		
2	NDC:55319-375-12	2 in 1 CARTON	05/03/2005	
2		6 in 1 BLISTER PACK; Type 0: Not a Combination Product		

## Marketing Information

Marketing Category	Application Number or Monograph Citation	Marketing Start Date	Marketing End Date
ANDA	ANDA076497	05/03/2005	

**Labeler** - Family Dollar Services Inc (024472631)

## Establishment

Name	Address	ID/FEI	Business Operations
LNK International, Inc.		832867837	manufacture(55319-375) , pack(55319-375)

## Establishment

Name	Address	ID/FEI	Business Operations
LNK International, Inc.		117025878	manufacture(55319-375)

Revised: 5/2024

Family Dollar Services Inc