

# LUTATHERA- lutetium lu 177 dotatate injection

## Advanced Accelerator Applications USA, Inc

### HIGHLIGHTS OF PRESCRIBING INFORMATION

These highlights do not include all the information needed to use LUTATHERA safely and effectively. See full prescribing information for LUTATHERA.

**LUTATHERA® (lutetium Lu 177 dotatate) injection, for intravenous use**  
**Initial U.S. Approval: 2018**

### RECENT MAJOR CHANGES

Indications and Usage (1)	4/2024
Dosage and Administration (2.2, 2.5, 2.6)	4/2024
Warnings and Precautions (5.1)	4/2024

### INDICATIONS AND USAGE

LUTATHERA is a radiolabeled somatostatin analog indicated for the treatment of adult and pediatric patients 12 years and older with somatostatin receptor-positive gastroenteropancreatic neuroendocrine tumors (GEP-NETs), including foregut, midgut, and hindgut neuroendocrine tumors. (1)

### DOSAGE AND ADMINISTRATION

- Verify pregnancy status of females of reproductive potential prior to initiating LUTATHERA. (2.1)
- Administer 7.4 GBq (200 mCi) every 8 weeks ( $\pm$  1 week) for a total of 4 doses. (2.2)
- Administer long-acting octreotide 30 mg intramuscularly 4 to 24 hours after each LUTATHERA dose and short-acting octreotide for symptomatic management. (2.3)
- Continue long-acting octreotide 30 mg intramuscularly every 4 weeks after completing LUTATHERA until disease progression or for 18 months following treatment initiation. (2.3)
- Administer antiemetics before recommended amino acid solution. (2.3)
- Initiate recommended intravenous amino acid solution 30 minutes before LUTATHERA infusion; continue during and for at least 3 hours after LUTATHERA infusion. Do not decrease dose of amino acid solution if LUTATHERA dose is reduced. (2.3)

### DOSAGE FORMS AND STRENGTHS

Injection: 370 MBq/mL (10 mCi/mL) in single-dose vial. (3)

### CONTRAINDICATIONS

None. (4)

### WARNINGS AND PRECAUTIONS

- **Risk From Radiation Exposure:** Minimize radiation exposure during and after treatment with LUTATHERA consistent with institutional good radiation safety practices and patient management procedures. (2.1, 5.1)
- **Myelosuppression:** Monitor blood cell counts. Withhold dose, reduce dose, or permanently discontinue based on the severity. (2.4, 5.2)
- **Secondary Myelodysplastic Syndrome (MDS) and Leukemia:** Median time to onset: MDS is 29 months; acute leukemia is 55 months. (5.3)
- **Renal Toxicity:** Advise patients to hydrate and to urinate frequently before, on the day of and the day after administration of LUTATHERA. Monitor serum creatinine and calculated creatinine clearance. Withhold dose, reduce dose, or permanently discontinue based on the severity. (2.3, 2.4, 5.4)
- **Hepatotoxicity:** Monitor transaminases, bilirubin, serum albumin and INR. (2.4, 5.5)
- **Hypersensitivity Reactions:** Monitor patients closely for signs and symptoms of hypersensitivity reactions, including anaphylaxis. Permanently discontinue LUTATHERA based on severity. (2.3, 2.4, 5.6)
- **Neuroendocrine Hormonal Crisis:** Monitor for flushing, diarrhea, hypotension, bronchoconstriction or other signs and symptoms. (5.7)
- **Embryo-Fetal Toxicity:** Can cause fetal harm. Advise females and males of reproductive potential of the potential risk to a fetus and to use effective contraception. (5.8, 8.1, 8.3)
- **Risk of Infertility:** LUTATHERA may cause infertility. (5.9, 8.3)

### ADVERSE REACTIONS

Most common Grade 3-4 adverse reactions ( $\geq 4\%$  with a higher incidence in LUTATHERA arm) are lymphopenia, increased GGT, vomiting, nausea, increased AST, increased ALT, hyperglycemia and hypokalemia. (6.1)

**To report SUSPECTED ADVERSE REACTIONS, contact Novartis Pharmaceuticals Corporation at 1-888-669-6682 or FDA at 1-800-FDA-1088 or [www.fda.gov/medwatch](http://www.fda.gov/medwatch).**

----- **DRUG INTERACTIONS** -----

Somatostatin Analogs: Discontinue long-acting analogs at least 4 weeks and short-acting octreotide at least 24 hours prior to each LUTATHERA dose. (2.3, 7.1)

----- **USE IN SPECIFIC POPULATIONS** -----

Lactation: Advise not to breastfeed. (8.2)

**See 17 for PATIENT COUNSELING INFORMATION.**

**Revised: 4/2024**

---

**FULL PRESCRIBING INFORMATION: CONTENTS\***

**1 INDICATIONS AND USAGE**

**2 DOSAGE AND ADMINISTRATION**

- 2.1 Important Safety Instructions
- 2.2 Recommended Dosage
- 2.3 Premedications and Concomitant Medications
- 2.4 Dosage Modifications for Adverse Reactions
- 2.5 Preparation and Administration
- 2.6 Radiation Dosimetry

**3 DOSAGE FORMS AND STRENGTHS**

**4 CONTRAINDICATIONS**

**5 WARNINGS AND PRECAUTIONS**

- 5.1 Risk From Radiation Exposure
- 5.2 Myelosuppression
- 5.3 Secondary Myelodysplastic Syndrome and Leukemia
- 5.4 Renal Toxicity
- 5.5 Hepatotoxicity
- 5.6 Hypersensitivity Reactions
- 5.7 Neuroendocrine Hormonal Crisis
- 5.8 Embryo-Fetal Toxicity
- 5.9 Risk of Infertility

**6 ADVERSE REACTIONS**

- 6.1 Clinical Trials Experience
- 6.2 Postmarketing Experience

**7 DRUG INTERACTIONS**

- 7.1 Somatostatin Analogs
- 7.2 Glucocorticoids

**8 USE IN SPECIFIC POPULATIONS**

- 8.1 Pregnancy
- 8.2 Lactation
- 8.3 Females and Males of Reproductive Potential
- 8.4 Pediatric Use
- 8.5 Geriatric Use
- 8.6 Renal Impairment

8.7 Hepatic Impairment

## **11 DESCRIPTION**

11.1 Physical Characteristics

11.2 External Radiation

## **12 CLINICAL PHARMACOLOGY**

12.1 Mechanism of Action

12.2 Pharmacodynamics

12.3 Pharmacokinetics

## **13 NONCLINICAL TOXICOLOGY**

13.1 Carcinogenesis, Mutagenesis, Impairment of Fertility

13.2 Animal Toxicology and/or Pharmacology

## **14 CLINICAL STUDIES**

14.1 Progressive, Well-Differentiated Advanced or Metastatic Somatostatin Receptor-Positive Midgut Carcinoid Tumors

14.2 Somatostatin Receptor-Positive Gastroenteropancreatic Neuroendocrine Tumors

## **16 HOW SUPPLIED/STORAGE AND HANDLING**

## **17 PATIENT COUNSELING INFORMATION**

\* Sections or subsections omitted from the full prescribing information are not listed.

---

## **FULL PRESCRIBING INFORMATION**

### **1 INDICATIONS AND USAGE**

LUTATHERA is indicated for the treatment of adult and pediatric patients 12 years and older with somatostatin receptor-positive gastroenteropancreatic neuroendocrine tumors (GEP-NETs), including foregut, midgut, and hindgut neuroendocrine tumors.

### **2 DOSAGE AND ADMINISTRATION**

#### **2.1 Important Safety Instructions**

LUTATHERA is a radiopharmaceutical; handle with appropriate safety measures to minimize radiation exposure [see *Warnings and Precautions (5.1)*]. Use waterproof gloves and effective radiation shielding when handling LUTATHERA.

Radiopharmaceuticals, including LUTATHERA, should be used by or under the control of healthcare providers who are qualified by specific training and experience in the safe use and handling of radiopharmaceuticals, and whose experience and training have been approved by the appropriate governmental agency authorized to license the use of radiopharmaceuticals.

Verify pregnancy status of females of reproductive potential prior to initiating LUTATHERA [see *Use in Specific Populations (8.1, 8.3)*].

Monitor patients closely for signs and symptoms of hypersensitivity reactions during and following the LUTATHERA administration for a minimum of 2 hours in a setting where cardiopulmonary resuscitation medication and equipment are available [see

*Warnings and Precautions (5.6)].*

## 2.2 Recommended Dosage

The recommended LUTATHERA dosage for adult and pediatric patients 12 years and older is 7.4 GBq (200 mCi) every 8 weeks ( $\pm$  1 week) for a total of 4 doses.

Administer premedications and concomitant medications as recommended [see *Dosage and Administration (2.3)*].

## 2.3 Premedications and Concomitant Medications

### Somatostatin Analogs

- Before initiating LUTATHERA treatment: Discontinue long-acting somatostatin analogs (e.g., long-acting octreotide) at least 4 weeks prior to initiating LUTATHERA. Administer short-acting octreotide as needed; discontinue at least 24 hours prior to initiating LUTATHERA [see *Drug Interactions (7.1)*].
- During LUTATHERA treatment: Administer long-acting octreotide 30 mg intramuscularly between 4 to 24 hours after each LUTATHERA dose. Do not administer long-acting octreotide within 4 weeks prior to each subsequent LUTATHERA dose. Short-acting octreotide may be given for symptomatic management during LUTATHERA treatment but must be withheld at least 24 hours before each LUTATHERA dose.
- Following LUTATHERA treatment: Continue long-acting octreotide 30 mg intramuscularly every 4 weeks after completing LUTATHERA until disease progression or for 18 months following treatment initiation at the discretion of the physician.

### Antiemetics

Administer antiemetics before the recommended amino acid solution.

### Amino Acid Solution

Initiate an intravenous infusion of a sterile amino acid solution containing L-lysine and L-arginine (Table 1) 30 minutes before the start of the LUTATHERA infusion. Use a three-way valve to administer the amino acid solution using the same venous access as LUTATHERA or administer the amino acid solution through a separate venous access in the patient's other arm. Continue the amino acid solution infusion during and for at least 3 hours after completion of the LUTATHERA infusion. Do not decrease the dose of the amino acid solution if a reduced dose of LUTATHERA is administered [see *Warnings and Precautions (5.4)*].

**Table 1. Amino Acid Solution**

Item	Specification
L-lysine HCl	Between 18 and 25 g <sup>a</sup>
L-arginine HCl	Between 18 and 25 g <sup>b</sup>
Volume	1 to 2 L
Osmolality	< 1200 mOsmol/kg

<sup>a</sup>equivalent to 14.4 to 20 g L-lysine.

<sup>b</sup>equivalent to 14.9 to 20.7 g L-arginine.

## Hypersensitivity Prophylaxis

Premedicate patients who have had prior Grade 1 or 2 hypersensitivity reactions to LUTATHERA. Do not re-challenge patients who experience Grade 3 or 4 hypersensitivity reactions to LUTATHERA [see *Warnings and Precautions (5.6)*].

### **2.4 Dosage Modifications for Adverse Reactions**

Recommended dose modifications of LUTATHERA for adverse reactions are provided in Table 2.

**Table 2. Recommended Dosage Modifications of LUTATHERA for Adverse Reactions**

<b>Adverse reaction</b>	<b>Severity of adverse reaction<sup>a</sup></b>	<b>Dose modification</b>
Thrombocytopenia [see <i>Warnings and Precautions (5.2)</i> ]	First occurrence of Grade 2, 3, or 4	Withhold dose until complete or partial resolution (Grade 0 to 1).  Resume LUTATHERA at 3.7 GBq (100 mCi) in patients with complete or partial resolution. If reduced dose does not result in Grade 2, 3, or 4 thrombocytopenia, administer LUTATHERA at 7.4 GBq (200 mCi) as next dose.  Permanently discontinue LUTATHERA for Grade 2 or higher thrombocytopenia requiring a dosing interval beyond 16 weeks.
	Recurrent Grade 2, 3, or 4	Permanently discontinue LUTATHERA.
Anemia and Neutropenia [see <i>Warnings and Precautions (5.2)</i> ]	First occurrence of Grade 3 or 4	Withhold dose until complete or partial resolution (Grade 0, 1, or 2).  Resume LUTATHERA at 3.7 GBq (100 mCi) in patients with complete or partial resolution. If reduced dose does not result in Grade 3 or 4 anemia or neutropenia, administer LUTATHERA at 7.4 GBq (200 mCi) as next dose.

		Permanently discontinue LUTATHERA for Grade 3 or higher anemia or neutropenia requiring a dosing interval beyond 16 weeks.
	Recurrent Grade 3 or 4	Permanently discontinue LUTATHERA.
Renal Toxicity <i>[see Warnings and Precautions (5.4)]</i>	First occurrence of: <ul style="list-style-type: none"> <li>• Creatinine clearance less than 40 mL/min; calculated using Cockcroft-Gault formula with actual body weight, or</li> <li>• 40% increase from baseline serum creatinine, or</li> <li>• 40% decrease from baseline creatinine clearance; calculated using Cockcroft-Gault formula with actual body weight.</li> </ul>	Withhold dose until resolution or return to baseline.  Resume LUTATHERA at 3.7 GBq (100 mCi) in patients with resolution or return to baseline. If reduced dose does not result in renal toxicity, administer LUTATHERA at 7.4 GBq (200 mCi) as next dose.  Permanently discontinue LUTATHERA for renal toxicity requiring a dosing interval beyond 16 weeks.
	Recurrent renal toxicity	Permanently discontinue LUTATHERA.
Hepatotoxicity <i>[see Warnings and Precautions (5.5)]</i>	First occurrence of: <ul style="list-style-type: none"> <li>• Bilirubinemia greater than 3 times the upper limit of normal (Grade 3 or 4), or</li> <li>• Serum albumin less than 30 g/L with international</li> </ul>	Withhold dose until resolution or return to baseline.  Resume LUTATHERA at 3.7 GBq (100 mCi) in patients with resolution or return to baseline. If reduced LUTATHERA dose does not result in hepatotoxicity, administer LUTATHERA at 7.4 GBq (200 mCi) as next dose.  Permanently discontinue LUTATHERA for hepatotoxicity

	normalized ratio (INR) > 1.5.	requiring a dosing interval beyond 16 weeks.
	Recurrent hepatotoxicity	Permanently discontinue LUTATHERA.
Hypersensitivity Reactions <sup>b</sup> [see Warnings and Precautions (5.6)]	First occurrence of Grade 3 or 4	Permanently discontinue LUTATHERA.
Any Other Adverse Reactions <sup>c</sup> [see Adverse Reactions (6.1)]	First occurrence of Grade 3 or 4	Withhold dose until complete or partial resolution (Grade 0 to 2).  Resume LUTATHERA at 3.7 GBq (100 mCi) in patients with complete or partial resolution. If reduced dose does not result in Grade 3 or 4 toxicity, administer LUTATHERA at 7.4 GBq (200 mCi) as next dose.  Permanently discontinue LUTATHERA for Grade 3 or higher adverse reactions requiring a dosing interval beyond 16 weeks.
	Recurrent Grade 3 or 4	Permanently discontinue LUTATHERA.

<sup>a</sup>Grading of severity is defined in the most current Common Terminology Criteria for Adverse Events (CTCAE).

<sup>b</sup>Including allergic reaction and anaphylaxis.

<sup>c</sup>No dose modification required for hematological toxicities Grade 3 or Grade 4 solely due to lymphopenia.

## 2.5 Preparation and Administration

### Preparation Instructions

- Use aseptic technique and radiation shielding when handling or administering the LUTATHERA solution. Use tongs when handling the vial to minimize radiation exposure.
- Inspect the product visually under a shielded screen for particulate matter and discoloration prior to administration. Discard the vial if particulates and/or discoloration are present.
- Do not inject the LUTATHERA solution directly into any other intravenous solution.
- Confirm the amount of radioactivity of LUTATHERA delivered to the patient with an appropriate dose calibrator prior to and after each LUTATHERA administration.
- Dispose of any unused medicinal product or waste material in accordance with local and federal laws.

## Administration Instructions

- Prior to administration, flush the intravenous catheter used for LUTATHERA administration with  $\geq 10$  mL of 0.9% Sodium Chloride Injection, USP to ensure patency and to minimize the risk of extravasation. Manage cases of extravasation as per institutional guidelines.
- The gravity method, peristaltic pump method, or the syringe pump method may be used for the administration of the recommended dosage. Do not administer LUTATHERA as an intravenous bolus.
- When using the gravity or peristaltic pump method, infuse LUTATHERA directly from its original container.
- Use the peristaltic pump or syringe pump method when administering a reduced dose of LUTATHERA following a dosage modification for an adverse reaction. When using the gravity method for a reduced dose, adjust the LUTATHERA dose before the administration to avoid the delivery of an incorrect volume of LUTATHERA.

## Intravenous Methods of Administration

### *Instructions for the Gravity Method*

- Insert a 2.5 cm, 20-gauge needle (short needle) into the LUTATHERA vial and connect via a catheter to 500 mL 0.9% Sodium Chloride Injection, USP (used to transport the LUTATHERA solution during the infusion). Ensure that the short needle does not touch the LUTATHERA solution in the vial and do not connect this short needle directly to the patient. Do not allow the 0.9% Sodium Chloride Injection, USP to flow into the LUTATHERA vial prior to the initiation of the LUTATHERA infusion and do not inject the LUTATHERA solution directly into the 0.9% Sodium Chloride Injection, USP.
- Insert a second needle that is 9 cm, 18-gauge (long needle) into the LUTATHERA vial ensuring that this long needle touches and is secured to the bottom of the LUTATHERA vial during the entire infusion. Connect the long needle to the patient by an intravenous catheter that is pre-filled with 0.9% Sodium Chloride Injection, USP and that is used for the LUTATHERA infusion into the patient.
- Use a clamp or an infusion pump to regulate the flow of the 0.9% Sodium Chloride Injection, USP via the short needle into the LUTATHERA vial at a rate of 50 mL/hour to 100 mL/hour for 5 to 10 minutes and then 200 mL/hour to 300 mL/hour for an additional 25 to 30 minutes (the 0.9% Sodium Chloride Injection, USP entering the vial through the short needle will carry the LUTATHERA solution from the vial to the patient via the intravenous catheter connected to the long needle over a total duration of 30 to 40 minutes).
- During the infusion, ensure that the level of solution in the LUTATHERA vial remains constant.
- Disconnect the vial from the long needle line and clamp the 0.9% Sodium Chloride Injection, USP line once the level of radioactivity is stable for at least five minutes.
- Follow the infusion with an intravenous flush of 25 mL of 0.9% Sodium Chloride Injection, USP through the intravenous catheter to the patient.

### *Instructions for the Peristaltic Pump Method*

- Insert a filtered 2.5 cm, 20-gauge needle (short venting needle) into the LUTATHERA vial. Ensure that the short needle does not touch the LUTATHERA solution in the vial and do not connect this short needle directly to the patient or to the peristaltic pump.
- Insert a second needle that is 9 cm, 18 gauge (long needle) into the LUTATHERA vial ensuring that the long needle touches and is secured to the bottom of the



- LUTATHERA vial during the entire infusion. Connect the long needle and a 0.9% Sodium Chloride Injection, USP to a 3-way stopcock valve via appropriate tubing.
- Connect the output of the 3-way stopcock valve to tubing installed on the input side of the peristaltic pump according to manufacturer's instructions.
  - Prime the line by opening the 3-way stopcock valve and pumping the LUTATHERA solution through the tubing until it reaches the exit of the valve.
  - Prime the intravenous catheter that will be connected to the patient by opening the 3-way stopcock valve to the 0.9% Sodium Chloride Injection, USP and pumping the 0.9% Sodium Chloride Injection, USP until it exits the end of the catheter tubing.
  - Connect the primed intravenous catheter to the patient and set the 3-way stopcock valve such that the LUTATHERA solution is in line with the peristaltic pump.
  - Infuse an appropriate volume of LUTATHERA solution over a 30-40 min period to deliver the desired radioactivity.
  - When the desired LUTATHERA radioactivity has been delivered, stop the peristaltic pump and then change the position of the 3-way stopcock valve so that the peristaltic pump is in line with the 0.9% Sodium Chloride Injection, USP. Restart the peristaltic pump and infuse an intravenous flush of 25 mL of 0.9% Sodium Chloride Injection, USP through the intravenous catheter to the patient.

#### *Instructions for the Syringe Pump Method*

- Withdraw an appropriate volume of LUTATHERA solution to deliver the desired radioactivity by using a disposable syringe fitted with a syringe shield and a disposable sterile needle that is 9 cm, 18 gauge (long needle). To aid the withdrawal of the solution, a filtered 2.5 cm, 20-gauge needle (short venting needle) can be used to reduce the resistance from the pressurized vial. Ensure that the short needle does not touch the LUTATHERA solution in the vial.
- Fit the syringe into the shielded pump and include a 3-way stopcock valve between the syringe and an intravenous catheter pre-filled with 0.9% Sodium Chloride Injection, USP and used for LUTATHERA administration to the patient.
- Infuse an appropriate volume of LUTATHERA solution over a 30-40 min period to deliver the desired radioactivity.
- When the desired LUTATHERA radioactivity has been delivered, stop the syringe pump and then change the position of the 3-way stopcock valve to flush the syringe with 25 mL of 0.9% Sodium Chloride Injection, USP. Restart the syringe pump.
- After the flush of the syringe has been completed, perform an intravenous flush with 25 mL of 0.9% Sodium Chloride Injection, USP through the intravenous catheter to the patient.

## **2.6 Radiation Dosimetry**

The maximum penetration of lutetium-177 in tissue is 2.2 mm and the mean penetration is 0.67 mm.

The mean and standard deviation (SD) of the estimated radiation absorbed doses for adults receiving LUTATHERA are shown in Table 3. The mean and SD of the estimated radiation absorbed doses for pediatric patients 12 years and older receiving LUTATHERA are shown in Table 4.

**Table 3. Estimated Radiation Absorbed Dose for LUTATHERA in Adults in NETTER-1**

---

Organ	Absorbed dose per unit activity (Gy/GBq) (N = 20)		Calculated absorbed dose for 4 x 7.4 GBq (29.6 GBq cumulative activity) (Gy)	
	Mean	SD	Mean	SD
Adrenals	0.037	0.016	1.1	0.5
Brain	0.027	0.016	0.8	0.5
Breasts	0.027	0.015	0.8	0.4
Gallbladder wall	0.042	0.019	1.2	0.6
Heart wall	0.032	0.015	0.9	0.4
Kidneys	0.654	0.295	19.4	8.7
Liver <sup>a</sup>	0.299	0.226	8.9	6.7
Lower large intestine wall	0.029	0.016	0.9	0.5
Lungs	0.031	0.015	0.9	0.4
Muscle	0.029	0.015	0.8	0.4
Osteogenic cells	0.151	0.268	4.5	7.9
Ovaries <sup>b</sup>	0.031	0.013	0.9	0.4
Pancreas	0.038	0.016	1.1	0.5
Red marrow <sup>c</sup>	0.035	0.029	1.0	0.8
Skin	0.027	0.015	0.8	0.4
Small intestine	0.031	0.015	0.9	0.5
Spleen	0.846	0.804	25.1	23.8
Stomach wall	0.032	0.015	0.9	0.5
Testes <sup>d</sup>	0.026	0.018	0.8	0.5
Thymus	0.028	0.015	0.8	0.5
Thyroid	0.027	0.016	0.8	0.5
Total body	0.052	0.027	1.6	0.8
Upper large intestine wall	0.032	0.015	0.9	0.4
Urinary bladder wall	0.437	0.176	12.8	5.3
Uterus <sup>b</sup>	0.032	0.013	1.0	0.4

<sup>a</sup>N = 18 (two patients excluded because the liver absorbed dose was biased by the uptake of the liver metastases).

<sup>b</sup>N = 9 (female patients only).

<sup>c</sup>Red marrow dosimetry estimates were determined using blood radioactivity.

<sup>d</sup>N = 11 (male patients only).

**Table 4. Estimated Radiation Absorbed Dose for LUTATHERA in Pediatric Patients 12 Years and Older in NETTER-P**

	Absorbed dose	Calculated absorbed dose for 4 x 7.4 GBq (29.6 GBq)
--	---------------	---

Organ	per unit activity (Gy/GBq) (N = 8 <sup>a</sup> )		cumulative activity) (Gy)	
	Mean	SD	Mean	SD
Adrenals	0.045	0.011	1.3	0.3
Brain	0.021	0.006	0.6	0.2
Breasts <sup>b</sup>	0.018	0.006	0.5	0.2
Esophagus	0.024	0.006	0.7	0.2
Eyes	0.021	0.006	0.6	0.2
Gallbladder wall	0.031	0.011	0.9	0.3
Heart wall	0.024	0.006	0.7	0.2
Kidneys	0.773	0.288	22.9	8.5
Left colon	0.265	0.081	7.8	2.4
Liver	0.216	0.231	6.4	6.8
Lungs	0.024	0.006	0.7	0.2
Osteogenic cells	0.046	0.019	1.4	0.6
Ovaries <sup>b</sup>	0.026	0.007	0.8	0.2
Pancreas	0.027	0.007	0.8	0.2
Pituitary <sup>c</sup>	1.053	0.348	31.2	10.3
Prostate <sup>d</sup>	0.026	0.006	0.8	0.2
Rectum	0.272	0.085	8.0	2.5
Red marrow (blood) <sup>e</sup>	0.027	0.005	0.8	0.2
Red marrow (image) <sup>e</sup>	0.055	0.026	1.6	0.8
Right colon	0.152	0.045	4.5	1.3
Salivary glands	0.036	0.017	1.1	0.5
Small intestine	0.046	0.013	1.3	0.4
Spleen	0.733	0.304	21.7	9.0
Stomach wall	0.027	0.007	0.8	0.2
Testes <sup>d</sup>	0.021	0.005	0.6	0.2
Thymus	0.022	0.006	0.7	0.2
Thyroid	0.022	0.006	0.6	0.2
Total body	0.042	0.010	1.2	0.3
Urinary bladder wall	0.573	0.088	17.0	2.6
Uterus <sup>b</sup>	0.031	0.008	0.9	0.2

<sup>a</sup>Data are pooled for 8 pediatric patients with somatostatin receptor-positive (SSTR+) tumors, including 4 patients with GEP-NETs.

<sup>b</sup>N = 5 (female patients only).

<sup>c</sup>N = 7 (3 GEP-NET, 4 SSTR+ tumors). Pituitary dosimetry estimates were only performed when pituitary uptake was clearly observed on the planar images. Due to the small size of the pituitary gland, availability for quantification only from planar images and interference from activity in the nasal mucosa, estimates can be associated with a large uncertainty. Pituitary gland absorbed dose estimate includes absorbed dose contributions from activity within the pituitary only, dose contributions from other tissues are

not included.

<sup>d</sup>N = 3 (male patients only).

<sup>e</sup>Red marrow dosimetry estimates were determined either using blood radioactivity or by imaging and scaling of a representative region of the lumbar spine.

### **3 DOSAGE FORMS AND STRENGTHS**

Injection: 370 MBq/mL (10 mCi/mL) of lutetium Lu 177 dotatate as a clear and colorless to slightly yellow solution in a single-dose vial.

### **4 CONTRAINDICATIONS**

None.

### **5 WARNINGS AND PRECAUTIONS**

#### **5.1 Risk From Radiation Exposure**

LUTATHERA contributes to a patient's overall long-term cumulative radiation exposure. Long-term cumulative radiation exposure is associated with an increased risk for cancer. These risks of radiation associated with the use of LUTATHERA are greater in pediatric patients than in adults [*see Use in Specific Populations (8.4)*].

Radiation can be detected in the urine for up to 30 days following LUTATHERA administration. Minimize radiation exposure to patients, medical personnel, and household contacts during and after treatment with LUTATHERA consistent with institutional good radiation safety practices, patient management procedures, Nuclear Regulatory Commission patient-release guidance, and instructions to the patient for follow-up radiation protection at home [*see Dosage and Administration (2.1), Clinical Pharmacology (12.3)*].

#### **5.2 Myelosuppression**

In NETTER-1, myelosuppression occurred more frequently in patients receiving LUTATHERA with long-acting octreotide compared to patients receiving high-dose long-acting octreotide (all Grades/Grade 3 or 4): anemia (81%/0) versus (54%/1%); thrombocytopenia (53%/1%) versus (17%/0); and neutropenia (26%/3%) versus (11%/0). In NETTER-1, platelet nadir occurred at a median of 5.1 months following the first dose. Of the 59 patients who developed thrombocytopenia, 68% had platelet recovery to baseline or normal levels. The median time to platelet recovery was 2 months. Fifteen of the nineteen patients in whom platelet recovery was not documented had post-nadir platelet counts. Among these 15 patients, 5 improved to Grade 1, 9 to Grade 2, and 1 to Grade 3.

Monitor blood cell counts. Withhold dose, reduce dose, or permanently discontinue LUTATHERA based on the severity of myelosuppression [*see Dosage and Administration (2.4)*].

#### **5.3 Secondary Myelodysplastic Syndrome and Leukemia**

In NETTER-1, with a median follow-up time of 76 months in the main study, myelodysplastic syndrome (MDS) was reported in 2.3% of patients receiving LUTATHERA with long-acting octreotide compared to no patients receiving high-dose long-acting octreotide.

In ERASMUS, 16 patients (2.0%) developed MDS and 4 (0.5%) developed acute leukemia. The median time to onset was 29 months (9 to 45 months) for MDS and 55 months (32 to 125 months) for acute leukemia.

#### **5.4 Renal Toxicity**

In ERASMUS, 8 patients (< 1%) developed renal failure 3 to 36 months following LUTATHERA. Two of these patients had underlying renal impairment or risk factors for renal failure (e.g., diabetes or hypertension) and required dialysis.

Administer the recommended amino acid solution before, during and after LUTATHERA [*see Dosage and Administration (2.3)*] to decrease the reabsorption of lutetium Lu 177 dotatate through the proximal tubules and decrease the radiation dose to the kidneys. Advise patients to hydrate and to urinate frequently before, on the day of, and the day after administration of LUTATHERA.

Monitor serum creatinine and calculated creatinine clearance. Withhold dose, reduce dose, or permanently discontinue LUTATHERA based on the severity of renal toxicity [*see Dosage and Administration (2.4)*].

Patients with baseline renal impairment may be at increased risk of toxicity due to increased radiation exposure [*see Use in Specific Populations (8.6)*].

#### **5.5 Hepatotoxicity**

In ERASMUS, 2 patients (< 1%) were reported to have hepatic tumor hemorrhage, edema, or necrosis, with one patient experiencing intrahepatic congestion and cholestasis. Patients with hepatic metastasis may be at increased risk of hepatotoxicity due to radiation exposure.

Monitor transaminases, bilirubin, serum albumin, and international normalized ratio (INR) during treatment. Withhold dose, reduce dose, or permanently discontinue LUTATHERA based on the severity of hepatotoxicity [*see Dosage and Administration (2.4)*].

#### **5.6 Hypersensitivity Reactions**

Hypersensitivity reactions, including angioedema, occurred in patients treated with LUTATHERA [*see Adverse Reactions (6.2)*]. Monitor patients closely for signs and symptoms of hypersensitivity reactions, including anaphylaxis, during and following LUTATHERA administration for a minimum of 2 hours in a setting where cardiopulmonary resuscitation medication and equipment are available. Discontinue the infusion upon the first observation of any signs or symptoms consistent with a severe hypersensitivity reaction and initiate appropriate therapy.

Premedicate patients with a history of Grade 1 or 2 hypersensitivity reactions to LUTATHERA before subsequent doses [*see Dosage and Administration (2.3)*]. Permanently discontinue LUTATHERA in patients who experience Grade 3 or 4 hypersensitivity reactions [*see Dosage and Administration (2.4)*].

## 5.7 Neuroendocrine Hormonal Crisis

Neuroendocrine hormonal crises, manifesting with flushing, diarrhea, bronchospasm and hypotension, occurred in < 1% of patients in ERASMUS and typically occurred during or within 24 hours following the initial LUTATHERA dose. Two (< 1%) patients were reported to have hypercalcemia.

Monitor patients for flushing, diarrhea, hypotension, bronchoconstriction or other signs and symptoms of tumor-related hormonal release. Administer intravenous somatostatin analogs, fluids, corticosteroids, and electrolytes as indicated.

## 5.8 Embryo-Fetal Toxicity

Based on its mechanism of action, LUTATHERA can cause fetal harm when administered to a pregnant woman [see *Clinical Pharmacology (12.1)*]. There are no available data on LUTATHERA use in pregnant women. No animal studies using lutetium Lu 177 dotatate have been conducted to evaluate its effect on female reproduction and embryo-fetal development; however, radioactive emissions, including those from LUTATHERA, can cause fetal harm.

Verify pregnancy status of females of reproductive potential prior to initiating LUTATHERA [see *Dosage and Administration (2.1)*].

Advise pregnant women of the potential risk to a fetus. Advise females of reproductive potential to use effective contraception during treatment with LUTATHERA and for 7 months after the last dose. Advise males with female partners of reproductive potential to use effective contraception during treatment with LUTATHERA and for 4 months after the last dose [see *Use in Specific Populations (8.1, 8.3)*].

## 5.9 Risk of Infertility

LUTATHERA may cause infertility in males and females. The recommended cumulative dose of 29.6 GBq of LUTATHERA results in a radiation absorbed dose to the testes and ovaries within the range where temporary or permanent infertility can be expected following external beam radiotherapy [see *Dosage and Administration (2.6)*, *Use in Specific Populations (8.3)*].

# 6 ADVERSE REACTIONS

The following clinically significant adverse reactions are described elsewhere in the labeling:

- Myelosuppression [see *Warnings and Precautions (5.2)*]
- Secondary Myelodysplastic Syndrome and Leukemia [see *Warnings and Precautions (5.3)*]
- Renal Toxicity [see *Warnings and Precautions (5.4)*]
- Hepatotoxicity [see *Warnings and Precautions (5.5)*]
- Hypersensitivity Reactions [see *Warnings and Precautions (5.6)*]
- Neuroendocrine Hormonal Crisis [see *Warnings and Precautions (5.7)*]

## 6.1 Clinical Trials Experience

Because clinical trials are conducted under widely varying conditions, adverse reaction rates observed in the clinical trials of a drug cannot be directly compared to rates in the

clinical trials of another drug and may not reflect the rates observed in practice.

The data in WARNINGS AND PRECAUTIONS reflect exposure to LUTATHERA in 111 patients with advanced, progressive midgut neuroendocrine tumors (NETTER-1). Safety data in WARNINGS AND PRECAUTIONS were also obtained in an additional 22 patients in a non-randomized pharmacokinetic sub-study of NETTER-1 and in a subset of patients (811 of 1214) with advanced somatostatin receptor-positive tumors enrolled in ERASMUS [see Warnings and Precautions (5)].

### Adult Population

#### NETTER-1

The safety data of LUTATHERA with octreotide was evaluated in NETTER-1 [see Clinical Studies (14.1)]. Patients with progressive, somatostatin receptor-positive midgut carcinoid tumors received LUTATHERA 7.4 GBq (200 mCi) administered every 8 to 16 weeks concurrently with the recommended amino acid solution and with long-acting octreotide (30 mg administered by intramuscular injection within 24 hours of each LUTATHERA dose) (N = 111), or high-dose octreotide (defined as long-acting octreotide 60 mg by intramuscular injection every 4 weeks) (N = 112) [see Clinical Studies (14.1)]. Among patients receiving LUTATHERA with octreotide, 79% received a cumulative dose > 22.2 GBq (> 600 mCi) and 76% of patients received all four planned doses. Six percent (6%) of patients required a dose reduction and 13% of patients discontinued LUTATHERA. Five patients discontinued LUTATHERA for renal-related events and 4 discontinued for hematological toxicities.

Table 5 and Table 6 summarize the incidence of adverse reactions and laboratory abnormalities, respectively. The most common Grade 3-4 adverse reactions occurring with a greater frequency among patients receiving LUTATHERA with octreotide compared to patients receiving high-dose octreotide include: lymphopenia (44%), increased gamma-glutamyltransferase (GGT) (20%), vomiting (7%), nausea and increased aspartate aminotransferase (AST) (5% each), and increased alanine aminotransferase (ALT), hyperglycemia and hypokalemia (4% each).

**Table 5. Adverse Reactions Occurring at Higher Incidence in Patients Receiving LUTATHERA with Long-Acting Octreotide Compared to High-Dose Long-Acting Octreotide (Between Arm Difference of  $\geq 5\%$  All Grades or  $\geq 2\%$  Grades 3-4)<sup>a</sup>**

Adverse reaction <sup>a</sup>	LUTATHERA with long-acting Octreotide (30 mg) (N = 111)		Long-acting Octreotide (60 mg) (N = 112)	
	All Grades %	Grades 3-4 %	All Grades %	Grades 3-4 %
<b>Gastrointestinal disorders</b>				
Nausea	65	5	12	2
Vomiting	53	7	10	0
Abdominal pain	26	3	19	3
Diarrhea	26	3	18	1

Constipation	10	0	5	0
<b>General disorders</b>				
Fatigue	38	1	26	2
Peripheral edema	16	0	9	1
Pyrexia	8	0	3	0
<b>Metabolism and nutrition disorders</b>				
Decreased appetite	21	0	11	3
<b>Nervous system disorders</b>				
Headache	17	0	5	0
Dizziness	17	0	8	0
Dysgeusia	8	0	2	0
<b>Vascular disorders</b>				
Flushing	14	1	9	0
Hypertension	12	2	7	2
<b>Musculoskeletal and connective tissue disorders</b>				
Back pain	13	2	10	0
Pain in extremity	11	0	5	0
Myalgia	5	0	0	0
Neck pain	5	0	0	0
<b>Renal and urinary disorders</b>				
Renal failure <sup>b</sup>	13	3	4	1
Radiation-related urinary tract adverse reactions <sup>c</sup>	8	0	3	0
<b>Psychiatric disorders</b>				
Anxiety	12	1	5	0
<b>Skin and subcutaneous tissue disorders</b>				
Alopecia	12	0	2	0
<b>Respiratory, thoracic and mediastinal disorders</b>				
Cough	11	1	6	0
<b>Cardiac disorders</b>				
Atrial fibrillation	5	1	0	0

<sup>a</sup>National Cancer Institute Common Terminology Criteria for Adverse Events (CTCAE) Version 4.03. Only displays adverse reactions occurring at a higher incidence in LUTATHERA-treated patients [between arm difference of  $\geq 5\%$  (all Grades) or  $\geq 2\%$  (Grades 3-4)].

<sup>b</sup>Includes the terms: Glomerular filtration rate decreased, acute kidney injury, acute prerenal failure, azotemia, renal disorder, renal failure, renal impairment.

<sup>c</sup>Includes the terms: Dysuria, micturition urgency, nocturia, pollakiuria, renal colic, renal pain, urinary tract pain and urinary incontinence.

**Table 6. Laboratory Abnormalities Occurring at Higher Incidence in Patients Receiving LUTATHERA with Long-Acting Octreotide Compared to High-Dose Long-Acting Octreotide (Between Arm Difference of  $\geq 5\%$  All Grades or  $\geq 2\%$  Grades 3-4)<sup>a,b</sup>**



Laboratory abnormality <sup>b</sup>	LUTATHERA with long-acting Octreotide (30 mg) (N = 111)		Long-acting Octreotide (60 mg) (N = 112)	
	All Grades %	Grades 3-4 %	All Grades %	Grades 3-4 %
<b>Hematology</b>				
Lymphopenia	90	44	39	5
Anemia	81	0	55	1
Leukopenia	55	2	20	0
Thrombocytopenia	53	1	17	0
Neutropenia	26	3	11	0
<b>Renal/Metabolic</b>				
Creatinine increased	85	1	73	0
Hyperglycemia	82	4	67	2
Hyperuricemia	34	6	30	6
Hypocalcemia	32	0	14	0
Hypokalemia	26	4	21	2
Hyperkalemia	19	0	11	0
Hypernatremia	17	0	7	0
Hypoglycemia	15	0	8	0
<b>Hepatic</b>				
GGT increased	66	20	67	16
Alkaline phosphatase increased	65	5	55	9
AST increased	50	5	35	0
ALT increased	43	4	34	0
Blood bilirubin increased	30	2	28	0

<sup>a</sup>Values are worst grade observed after randomization.

<sup>b</sup>National Cancer Institute Common Terminology Criteria for Adverse Events (CTCAE) Version 4.03. Only displays laboratory abnormalities occurring at a higher incidence in LUTATHERA-treated patients [between arm difference of  $\geq$  5% (all Grades) or  $\geq$  2% (Grades 3-4)].

## ERASMUS

Safety data are available from 1214 patients in ERASMUS, an international, single-institution, single-arm, open-label trial of patients with somatostatin receptor-positive tumors (neuroendocrine and other primaries). Patients received LUTATHERA 7.4 GBq (200 mCi) administered every 6 to 13 weeks with or without octreotide. Retrospective medical record review was conducted on a subset of 811 patients to document serious adverse reactions. Eighty-one (81%) percent of patients in the subset received a cumulative dose  $\geq$  22.2 GBq ( $\geq$  600 mCi). With a median follow-up time of more than 4 years, the following rates of serious adverse reactions were reported: myelodysplastic syndrome (2%), acute leukemia (1%), renal failure (2%), hypotension (1%), cardiac

failure (2%), myocardial infarction (1%), and neuroendocrine hormonal crisis (1%).

## Pediatric Population

### NETTER-P

Safety data are available from 9 pediatric patients in NETTER-P (NCT04711135), an international, multi-center, single-arm, open-label trial of patients with somatostatin receptor-positive tumors, including 4 patients with GEP-NETs. Patients received LUTATHERA 7.4 GBq (200 mCi) administered every 8 weeks concurrently with the recommended amino acid solution. Adverse reactions observed in NETTER-P were similar to those observed in adults treated with LUTATHERA.

## **6.2 Postmarketing Experience**

The following adverse reactions have been identified during post approval use of LUTATHERA. Because these reactions are reported voluntarily from a population of uncertain size, it is not always possible to reliably estimate their frequency or establish a causal relationship to drug exposure.

- *Immune System Disorders*: hypersensitivity reactions, including angioedema

## **7 DRUG INTERACTIONS**

### **7.1 Somatostatin Analogs**

Somatostatin and its analogs competitively bind to somatostatin receptors and may interfere with the efficacy of LUTATHERA. Discontinue long-acting somatostatin analogs at least 4 weeks and short-acting octreotide at least 24 hours prior to each LUTATHERA dose. Administer short- and long-acting octreotide during LUTATHERA treatment as recommended [see *Dosage and Administration (2.3)*].

### **7.2 Glucocorticoids**

Glucocorticoids can induce down-regulation of subtype 2 somatostatin receptors (SSTR2). Avoid repeated administration of high doses of glucocorticoids during treatment with LUTATHERA.

## **8 USE IN SPECIFIC POPULATIONS**

### **8.1 Pregnancy**

#### Risk Summary

Based on its mechanism of action, LUTATHERA can cause fetal harm when administered to a pregnant woman [see *Clinical Pharmacology (12.1)*]. There are no available data on LUTATHERA use in pregnant women. No animal studies using lutetium Lu 177 dotatate have been conducted to evaluate its effect on female reproduction and embryo-fetal development; however, radioactive emissions, including those from LUTATHERA, can cause fetal harm. Advise pregnant women of the potential risk to a fetus.

In the U.S. general population, the estimated background risk of major birth defects and miscarriage in clinically recognized pregnancies is 2% to 4% and 15% to 20%,

respectively.

## **8.2 Lactation**

### Risk Summary

There are no data on the presence of lutetium Lu 177 dotatate in human milk, or its effects on the breastfed child or milk production. No lactation studies in animals were conducted. Because of the potential risk for serious adverse reactions in breastfed children, advise women not to breastfeed during treatment with LUTATHERA and for 2.5 months after the last dose.

## **8.3 Females and Males of Reproductive Potential**

Based on mechanism of action, LUTATHERA can cause fetal harm when administered to a pregnant woman [*see Use in Specific Populations (8.1)*].

### Pregnancy Testing

Verify pregnancy status of females of reproductive potential prior to initiating LUTATHERA [*see Use in Specific Populations (8.1)*].

### Contraception

#### *Females*

Advise females of reproductive potential to use effective contraception during treatment with LUTATHERA and for 7 months after the last dose.

#### *Males*

Advise males with female partners of reproductive potential to use effective contraception during treatment with LUTATHERA and for 4 months after the last dose [*see Clinical Pharmacology (12.1), Nonclinical Toxicology (13.1)*].

### Infertility

The recommended cumulative dose of 29.6 GBq of LUTATHERA results in a radiation absorbed dose to the testes and ovaries within the range where temporary or permanent infertility can be expected following external beam radiotherapy [*see Dosage and Administration (2.6)*].

## **8.4 Pediatric Use**

### Somatostatin Receptor-Positive Gastroenteropancreatic Neuroendocrine Tumors

The safety and effectiveness of LUTATHERA have been established in pediatric patients 12 years and older with somatostatin receptor-positive gastroenteropancreatic neuroendocrines (GEP-NETs). Use of LUTATHERA for this indication is supported by evidence from an adequate and well-controlled study of LUTATHERA in adults with additional safety, pharmacokinetic, and dosimetry data in pediatric patients aged 12 years and older with somatostatin receptor-positive tumors, including 4 pediatric patients with GEP-NETs [*see Adverse Reactions (6.1), Clinical Pharmacology (12.3), Clinical Studies (14)*].

The risks of radiation exposure associated with LUTATHERA are greater in pediatric patients than in adult patients due to longer life expectancy. Continued follow-up is

recommended for evaluation of long-term effects.

There was no clinically relevant difference in lutetium Lu 177 dotatate exposure in pediatric patients aged 13 to 16 years versus adult patients [see *Clinical Pharmacology (12.3)*].

The pharmacokinetic profile and safety of LUTATHERA in pediatric patients 12 years and older with baseline renal impairment have not been studied.

The safety and effectiveness of LUTATHERA have not been established in pediatric patients younger than 12 years old with somatostatin receptor-positive GEP-NETs.

## **8.5 Geriatric Use**

Of the 1325 patients treated with LUTATHERA in clinical trials, 438 patients (33%) were 65 years and older. No overall differences in safety or effectiveness were observed between older and younger patients.

## **8.6 Renal Impairment**

No dose adjustment is recommended for patients with baseline mild to moderate (creatinine clearance 30 to 89 mL/min by Cockcroft-Gault formula) renal impairment. However, patients with baseline mild or moderate renal impairment may be at greater risk of toxicity, including renal toxicity, due to increased radiation exposure. Perform more frequent assessments of renal function in patients with baseline mild to moderate impairment. The pharmacokinetic profile and safety of LUTATHERA in patients with baseline severe renal impairment (creatinine clearance < 30 mL/min by Cockcroft-Gault formula) or end-stage renal disease have not been studied [see *Warnings and Precautions (5.4)*].

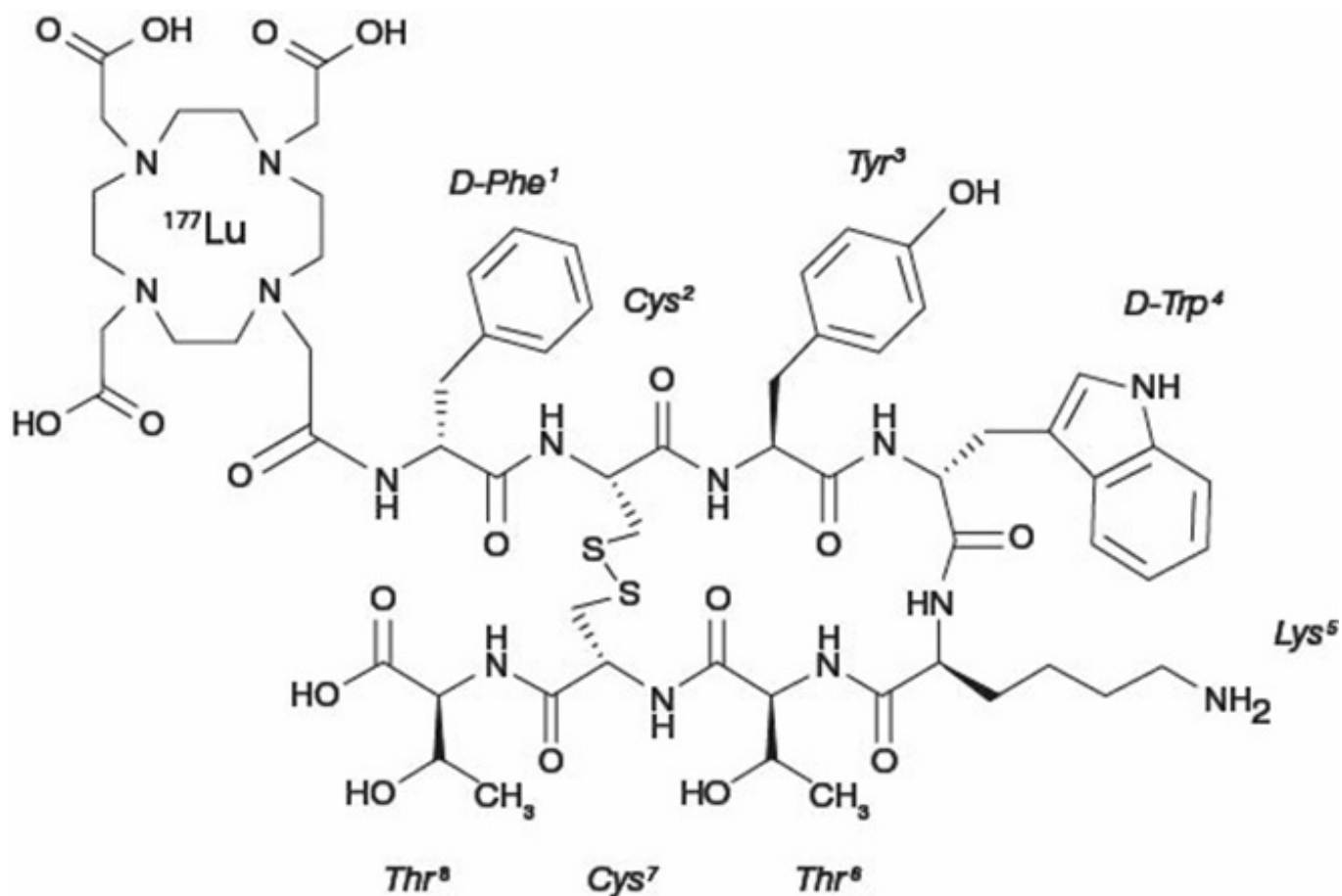
## **8.7 Hepatic Impairment**

No dose adjustment is recommended for patients with baseline mild or moderate hepatic impairment. The pharmacokinetic profile and safety of LUTATHERA in patients with baseline severe hepatic impairment (total bilirubin > 3 times upper limit of normal, regardless of AST level) have not been studied.

## **11 DESCRIPTION**

Lutetium Lu 177 dotatate is a radiolabeled somatostatin analog. The drug substance lutetium Lu 177 dotatate is a cyclic peptide linked with the covalently bound chelator 1,4,7,10-tetraazacyclododecane-1,4,7,10-tetraacetic acid to a radionuclide.

Lutetium Lu 177 dotatate is described as lutetium (Lu 177)-N-[(4,7,10-Tricarboxymethyl-1,4,7,10-tetraazacyclododec-1-yl) acetyl]-D-phenylalanyl-L-cysteinyl-L-tyrosyl-D-tryptophanyl-L-lysyl-L-threoninyl-L-cysteinyl-L-threonine-cyclic (2-7) disulfide. The molecular weight is 1609.6 Daltons and the structural formula is as follows:



LUTATHERA (lutetium Lu 177 dotatate) 370 MBq/mL (10 mCi/mL) Injection is a sterile, clear, colorless to slightly yellow solution for intravenous use. Each single-dose vial contains acetic acid (0.48 mg/mL), sodium acetate (0.66 mg/mL), gentisic acid (0.63 mg/mL), sodium hydroxide (0.64 mg/mL), ascorbic acid (2.8 mg/mL), diethylene triamine pentaacetic acid (0.05 mg/mL), sodium chloride (6.85 mg/mL), and Water for Injection (ad 1 mL). The pH range of the solution is 4.5 to 6.

### 11.1 Physical Characteristics

Lutetium-177 decays to stable hafnium-177 with a half-life of 6.647 days, by emitting beta-minus radiation with a maximum energy of 0.498 MeV (79%) and photonic radiation ( $\gamma$ ) of 0.208 MeV (11%) and 0.113 MeV (6.2%). The main radiations of lutetium-177 are detailed in Table 7.

**Table 7. Lutetium-177 Main Radiations**

Radiation	Energy (keV)	I $\beta$ -%	I $\gamma$ %
$\beta^-$	176.5	12.2	
$\beta^-$	248.1	0.05	
$\beta^-$	384.9	9.1	
$\beta^-$	497.8	78.6	
$\gamma$	71.6		0.15
$\gamma$	112.9		6.20
$\gamma$	136.7		0.05
$\gamma$	208.4		11.0

γ	249.7		0.21
γ	321.3		0.22

## 11.2 External Radiation

Table 8 summarizes the radioactive decay properties of lutetium-177.

**Table 8. Physical Decay Chart:  
Lutetium-177 Physical Half-Life =  
6.647 Days**

Hours	Fraction remaining	Hours	Fraction remaining
0	1.000	48 (2 days)	0.812
1	0.996	72 (3 days)	0.731
2	0.991	168 (7 days)	0.482
5	0.979	336 (14 days)	0.232
10	0.958	720 (30 days)	0.044
24 (1 day)	0.901	1080 (45 days)	0.009

## 12 CLINICAL PHARMACOLOGY

### 12.1 Mechanism of Action

Lutetium Lu 177 dotatate binds to somatostatin receptors with highest affinity for subtype 2 somatostatin receptors (SSTR2). Upon binding to somatostatin receptor expressing cells, including malignant somatostatin receptor-positive tumors, the compound is internalized. The beta-minus emission from lutetium-177 induces cellular damage by formation of free radicals in somatostatin receptor-positive cells and in neighboring cells.

### 12.2 Pharmacodynamics

Lutetium Lu 177 dotatate exposure-response relationships and the time course of pharmacodynamics response are unknown.

#### Cardiac Electrophysiology

The ability of LUTATHERA to prolong the QTc interval at the recommended dose was assessed in an open-label study in 20 patients with somatostatin receptor-positive midgut carcinoid tumors. No large changes in the mean QTc interval (i.e., > 20 ms) were detected.

### 12.3 Pharmacokinetics

The pharmacokinetics (PK) of lutetium Lu 177 dotatate have been characterized in patients with progressive, somatostatin receptor-positive neuroendocrine tumors. The mean blood exposure (area under the curve) of lutetium Lu 177 dotatate at the recommended dose is 41 ng.h/mL [coefficient of variation (CV) 36%]. The mean maximum blood concentration ( $C_{max}$ ) for lutetium Lu 177 dotatate is 10 ng/mL (CV 50%), which generally occurred at the end of the LUTATHERA infusion.

### Distribution

The mean volume of distribution ( $V_z$ ) for lutetium Lu 177 dotatate is 460 L (CV 54%).

The non-radioactive lutetium Lu 175 dotatate is 43% bound to human plasma proteins.

Within 4 hours after administration, lutetium Lu 177 dotatate distributes in kidneys, tumor lesions, liver, spleen, and, in some patients, pituitary gland and thyroid. The co-administration of amino acids reduced the median radiation dose to the kidneys by 47% (34% to 59%) and increased the mean beta-phase blood clearance of lutetium Lu 177 dotatate by 36%.

### Elimination

The mean clearance (CL) is 4.5 L/h (CV 31%) and the mean terminal half-life is 71 ( $\pm$ 28) hours for lutetium 177 dotatate.

### *Metabolism*

Lutetium Lu 177 dotatate does not undergo hepatic metabolism.

### *Excretion*

Lutetium Lu 177 dotatate is primarily eliminated renally with cumulative excretion of 44% within 5 hours, 58% within 24 hours, and 65% within 48 hours following LUTATHERA administration. Prolonged elimination of lutetium Lu 177 dotatate in the urine is expected; however, based on the half-life of lutetium-177 and terminal half-life of lutetium Lu 177 dotatate, greater than 99% of the administered radioactivity will be eliminated within 14 days after administration of LUTATHERA [see *Warnings and Precautions (5.1)*].

### Special Populations

#### *Pediatric Patients*

There were no clinically relevant differences in exposure of lutetium Lu 177 dotatate in pediatric patients 12 years and older compared to that of adult patients.

### Drug Interaction Studies

#### *In Vitro Studies*

*CYP450 enzymes:* The non-radioactive lutetium Lu 175 dotatate is not an inhibitor or inducer of cytochrome P450 (CYP) 1A2, 2B6, 2C9, 2C19 or 2D6 in vitro.

*Transporters:* The non-radioactive lutetium Lu 175 dotatate is not an inhibitor of P-glycoprotein, BCRP, OAT1, OAT3, OCT1, OCT2, OATP1B1, or OATP1B3 in vitro.

## **13 NONCLINICAL TOXICOLOGY**

### **13.1 Carcinogenesis, Mutagenesis, Impairment of Fertility**

Carcinogenicity and mutagenicity studies have not been conducted with lutetium Lu 177 dotatate; however, radiation is a carcinogen and mutagen.

No animal studies were conducted to determine the effects of lutetium Lu 177 dotatate on fertility.

### **13.2 Animal Toxicology and/or Pharmacology**

The primary target organ in animal studies using the non-radioactive lutetium Lu 175 dotatate was the pancreas, a high SSTR2 expressing organ. Pancreatic acinar apoptosis occurred at lutetium Lu 175 dotatate doses  $\geq 5$  mg/kg in repeat dose toxicology studies in rats. Pancreatic acinar cell atrophy also occurred in repeat dose toxicology studies in dogs at doses  $\geq 500$  mcg/kg. These findings were consistent with high uptake of the radiolabeled peptide in the pancreas in animal biodistribution studies.

## **14 CLINICAL STUDIES**

### **14.1 Progressive, Well-Differentiated Advanced or Metastatic Somatostatin Receptor-Positive Midgut Carcinoid Tumors**

The efficacy of LUTATHERA in patients with progressive, well-differentiated, locally advanced/inoperable or metastatic somatostatin receptor-positive midgut carcinoid tumors was established in NETTER-1 (NCT01578239), a randomized, multicenter, open-label, active-controlled trial. Key eligibility criteria included Ki67 index  $\leq 20\%$ , Karnofsky performance status  $\geq 60$ , confirmed presence of somatostatin receptors on all lesions (OctreoScan uptake  $\geq$  normal liver), creatinine clearance  $\geq 50$  mL/min, no prior treatment with peptide receptor radionuclide therapy (PRRT), and no prior external beam radiation therapy to more than 25% of the bone marrow.

At the time of the primary analysis, 229 patients were randomized (1:1) to receive either LUTATHERA 7.4 GBq (200 mCi) every 8 weeks ( $\pm 1$  week) for up to 4 administrations (maximum cumulative dose of 29.6 GBq) or high-dose long-acting octreotide (defined as 60 mg by intramuscular injection every 4 weeks). Patients in the LUTATHERA arm also received long-acting octreotide 30 mg as an intramuscular injection 4 to 24 hours after each LUTATHERA dose and every 4 weeks after completion of LUTATHERA treatment until disease progression or until week 76 of the study. Patients in both arms could receive short-acting octreotide for symptom management; however, short-acting octreotide was withheld at least 24 hours before each LUTATHERA dose. Randomization was stratified by OctreoScan tumor uptake score (Grade 2, 3, or 4) and the length of time that patients had been on the most recent constant dose of octreotide prior to randomization ( $\leq 6$  or  $> 6$  months). The major efficacy outcome measure was progression-free survival (PFS) as determined by a blinded independent review committee (IRC) per RECIST v1.1. Additional efficacy outcome measures were overall response rate (ORR) by IRC, duration of response (DoR) by IRC, and overall survival (OS).

Demographic and baseline disease characteristics were balanced between the treatment arms. Of the 229 patients, 82% were White, 4% were Black, 3% were Hispanic or Latino, 0.4% were Asian, 0.4% were Other, and 9% were not reported. The median age was 64 years (28 to 87 years); 51% were male, 74% had an ileal primary, and 96% had



metastatic disease in the liver. The median Karnofsky performance score was 90 (60 to 100), 74% received a constant dose of octreotide for > 6 months and 12% received prior treatment with everolimus. Sixty-nine percent of patients had Ki67 expression in  $\leq$  2% of tumor cells, 77% had CgA > 2 times the upper limit of normal (ULN), 65% had 5-HIAA > 2 times ULN, and 65% had alkaline phosphatase  $\leq$  ULN.

At the time of the final OS analysis, which occurred 66 months after the primary PFS analysis, 117 patients were randomized to the LUTATHERA arm and 114 patients were randomized to the octreotide arm. In the final OS analysis, there was no statistically significant difference in OS between the two treatment arms.

Efficacy results for NETTER-1 are presented in Table 9 and Figure 1.

**Table 9. Efficacy Results in NETTER-1**

	<b>LUTATHERA with long- acting Octreotide (30 mg) N = 116</b>	<b>Long- acting Octreotide (60 mg) N = 113</b>
<b>PFS by IRC</b>		
Events (%)	27 (23%)	78 (69%)
Progressive disease, n (%)	15 (13%)	61 (54%)
Death, n (%)	12 (10%)	17 (15%)
Median in months (95% CI)	NR (18.4, NE)	8.5 (6.0, 9.1)
Hazard ratio <sup>a</sup> (95% CI)	0.21 (0.13, 0.32)	
p-value <sup>b</sup>	< 0.0001	
<b>ORR by IRC</b>		
ORR, % (95% CI)	13% (7%,19%)	4% (0.1%, 7%)
Complete response rate, n (%)	1 (1%)	0
Partial response rate, n (%)	14 (12%)	4 (4%)
p-value <sup>c</sup>	0.0148	
Duration of response, median in months (95% CI)	NR (2.8, NE)	1.9 (1.9, NE)

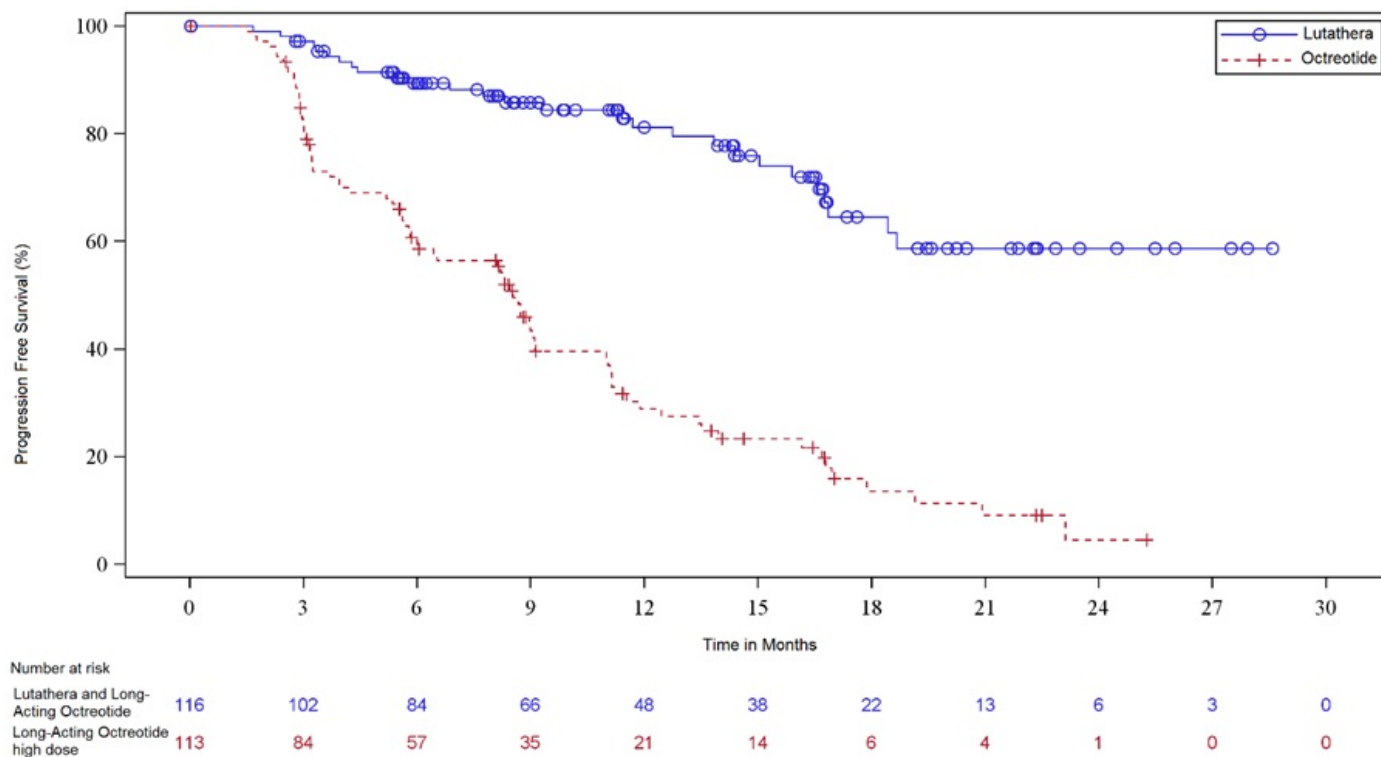
Abbreviations: CI, confidence interval; IRC, independent radiology committee; NE, not evaluable; NR, not reached; ORR, overall response rate; PFS, progression-free survival.

<sup>a</sup>Hazard ratio based on the unstratified Cox model.

<sup>b</sup>Unstratified log rank test.

<sup>c</sup>Fisher's exact test.

**Figure 1. Kaplan-Meier Curves for Progression-Free Survival in NETTER-1**



## 14.2 Somatostatin Receptor-Positive Gastroenteropancreatic Neuroendocrine Tumors

The efficacy of LUTATHERA in patients with foregut, midgut, and hindgut gastroenteropancreatic neuroendocrine tumors (GEP-NETs) was assessed in 360 patients in the ERASMUS study. In ERASMUS, LUTATHERA was initially provided as expanded access under a general peptide receptor radionuclide therapy protocol at a single site in the Netherlands. A subsequent LUTATHERA-specific protocol written eight years after study initiation did not describe a specific sample size or hypothesis testing plan but allowed for retrospective data collection. A total of 1214 patients received LUTATHERA in ERASMUS, of whom 578 patients had baseline tumor assessments. Of the 578 patients, 360 (62%) had GEP-NETs and long-term follow-up. Of these 360 patients, 145 (40%) had their tumors prospectively evaluated according to RECIST criteria. LUTATHERA 7.4 GBq (200 mCi) was administered every 6 to 13 weeks for up to 4 doses concurrently with the recommended amino acid solution. The major efficacy outcome was investigator-assessed ORR. The median age in the efficacy subset was 60 years (30 to 85 years), 51% were male, 71% had a baseline Karnofsky performance status  $\geq 90$ , 51% had progressed within 12 months of treatment, and 7% had received prior chemotherapy. Fifty-two percent (52%) of patients received a concomitant somatostatin analog. The median dose of LUTATHERA was 29.6 GBq (800 mCi). The investigator-assessed ORR was 17% (95% CI: 13, 21) based on an analysis that required responders to have had prospective response assessments according to RECIST criteria. Three complete responses were observed ( $< 1\%$ ). Median DoR in the 60 responding patients was 35 months (95% CI: 17, 38).

## 16 HOW SUPPLIED/STORAGE AND HANDLING

LUTATHERA Injection containing 370 MBq/mL (10 mCi/mL) of lutetium Lu 177 dotatate is

a sterile, preservative-free and clear, colorless to slightly yellow solution for intravenous use supplied in a clear, colorless Type I glass 30 mL single-dose vial containing 7.4 GBq (200 mCi)  $\pm$  10% of lutetium Lu 177 dotatate at the time of injection (NDC# 69488-003-01). The solution volume in the vial ranges between 20.5 to 25 mL to provide a total of 7.4 GBq (200 mCi) of radioactivity.

The product vial is enclosed within a lead shielded container (NDC# 69488-003-01) placed in a plastic sealed container. The product is shipped in a Type A package (NDC# 69488-003-70).

Store below 25°C (77°F). Do not freeze LUTATHERA. Store in the original package to protect from ionizing radiation (lead shielding).

The shelf life is 72 hours from the date and time of calibration. Discard appropriately at 72 hours.

## **17 PATIENT COUNSELING INFORMATION**

### Risk From Radiation Exposure

Advise patients and/or caregivers to minimize radiation exposure to household contacts during and after treatment with LUTATHERA consistent with institutional good radiation safety practices and patient management procedures [see *Dosage and Administration (2.1)*, *Warnings and Precautions (5.1)*].

### Myelosuppression

Advise patients and/or caregivers to contact their healthcare provider for any signs or symptoms of myelosuppression or infection [see *Warnings and Precautions (5.2)*].

### Secondary Myelodysplastic Syndrome and Leukemia

Advise patients and/or caregivers of the potential for secondary cancers, including myelodysplastic syndrome and acute leukemia [see *Warnings and Precautions (5.3)*].

### Renal Toxicity

Advise patients and/or caregivers to hydrate and to urinate frequently before, on the day of, and the day after administration of LUTATHERA [see *Warnings and Precautions (5.4)*]. Advise patients to contact their healthcare provider for any signs or symptoms of renal toxicity [see *Warnings and Precautions (5.4)*].

### Hepatotoxicity

Advise patients and/or caregivers of the need for periodic laboratory tests to monitor for hepatotoxicity [see *Warnings and Precautions (5.5)*]. Advise patients to contact their healthcare provider for any signs or symptoms of hepatotoxicity [see *Warnings and Precautions (5.5)*].

### Hypersensitivity

Advise patients and/or caregivers that LUTATHERA may cause hypersensitivity reactions, including angioedema, and to seek immediate medical attention for signs or symptoms of hypersensitivity [see *Warnings and Precautions (5.6)*].

### Neuroendocrine Hormonal Crises

Advise patients and/or caregivers to contact their healthcare provider for signs or symptoms that may occur following tumor-related hormonal release [see *Warnings and Precautions (5.7)*].

### Embryo-Fetal Toxicity

Advise pregnant women and males and females of reproductive potential of the potential risk to a fetus. Advise females to inform their healthcare provider of a known or suspected pregnancy [see *Warnings and Precautions (5.8)*, *Use in Specific Populations (8.1, 8.3)*].

Advise females of reproductive potential to use effective contraception during treatment with LUTATHERA and for 7 months after the last dose [see *Use in Specific Populations (8.1, 8.3)*].

Advise male patients with female partners of reproductive potential to use effective contraception during treatment with LUTATHERA and for 4 months after the last dose [see *Use in Specific Populations (8.1, 8.3)*].

### Lactation

Advise females not to breastfeed during treatment with LUTATHERA and for 2.5 months after the last dose [see *Use in Specific Populations (8.2)*].

### Infertility

Advise female and male patients that LUTATHERA may impair fertility [see *Warnings and Precautions (5.9)*, *Use in Specific Populations (8.3)*].

Distributed by:

Advanced Accelerator Applications USA, Inc., Millburn, NJ 07041

©2024 Advanced Accelerator Applications USA, Inc.

LUTATHERA® is a registered trademark of Novartis AG and/or its affiliates.

T2024-38

## **PRINCIPAL DISPLAY PANEL**

Vial Label

Lutathera®

lutetium Lu 177 dotatate injection

For Intravenous Infusion

Single-dose vial. Discard after 72 hours.

Rx Only

NDC 69488-003-01



**Lutathera®** NDC 69488-003-01  
**lutetium Lu 177 dotatate injection**  
 For intravenous infusion

Single-dose vial. Discard after 72 hours.  
 Usual Dosage: See Prescribing Information  
 Store below 25°C (77°F). Do not freeze.

Manufactured by: Lot #: {XXX XXXXXX X-XX}  
 < Address 1 > Vial #: {XXX Xxxx} Volume: {XX.X} mL  
 < Address 2 > Volumetric activity at calibration time:  
 < Address 3 > 370 MBq/mL (10 mCi/mL) -  
 < Address 4 > {MMM/DD/YYYY hh:mm am/pm UTC+XX:XX}  
 < Address 5 > Activity at reference administration time:  
 {XXXXX} MBq - ({XXX} mCi)  
 {MMM/DD/YYYY hh:mm am/pm UTC+XX:XX}  
 V.U.S.688.03 EXP: {MMM/DD/YYYY hh:mm am/pm UTC+XX:XX}



## PRINCIPAL DISPLAY PANEL

Lead Shielding

Lutathera®  
 lutetium Lu 177 dotatate injection  
 For Intravenous Infusion  
 Single-dose vial. Discard after 72 hours.  
 Rx Only  
 NDC 69488-003-01



**Lutathera®**  
**lutetium Lu 177 dotatate injection**

For Intravenous Infusion  
 Single-dose vial. Discard after 72 hours.  
 One mL contains 370 MBq (10 mCi/mL) of  
 lutetium Lu 177 dotatate at calibration time.  
 Acetic acid (0.48 mg/mL), sodium acetate  
 (0.66 mg/mL), gentisic acid (0.63 mg/mL),  
 sodium hydroxide (0.64 mg/mL), ascorbic  
 acid (2.8 mg/mL), diethylene triamine  
 pentaacetic acid (0.05 mg/mL), sodium  
 chloride (6.85 mg/mL), and Water for  
 Injection (ad 1 mL).

Usual Dosage: See Prescribing  
 Information.  
 Store below 25°C (77°F). Do not freeze.  
 Store in the original package to  
 protect from ionizing radiation  
 (lead shielding).  
 Any unused medicinal product or waste  
 material should be disposed of in  
 accordance with local requirements.



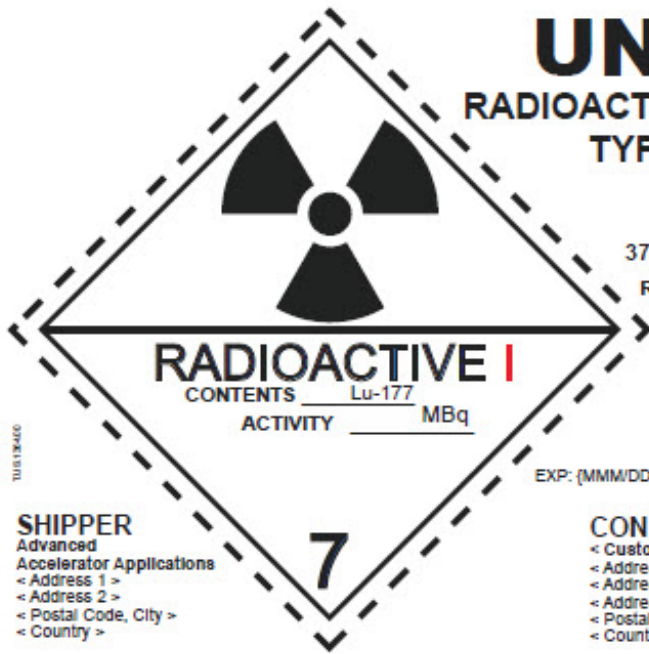
NDC 69488-003-01  
 Distributed by:  
 Advanced Accelerator Applications USA, Inc.  
 Millburn, NJ 07041

Lot #: {XXX XXXXXX X-XX} Vial #: {XXX Xxxx}  
 Volume: {XX.X} mL  
 Volumetric activity at calibration time: 370 MBq/mL  
 (10 mCi/mL) - {MMM/DD/YYYY hh:mm am/pm UTC+XX:XX}  
 Activity at reference administration time: {XXXXX} MBq -  
 ({XXX} mCi) {MMM/DD/YYYY hh:mm am/pm UTC+XX:XX}  
 EXP: {MMM/DD/YYYY hh:mm am/pm UTC+XX:XX} L.U.S.688.03

## PRINCIPAL DISPLAY PANEL

TYPE A PACKAGE

lutetium Lu 177 dotatate injection  
 370 MBq/mL (10 mCi/mL)  
 Rx Only NDC 69488-003-70



# UN 2915

## RADIOACTIVE MATERIAL TYPE A PACKAGE

lutetium Lu 177  
dotatate injection  
370 MBq/mL (10 mCi/mL)  
Rx Only NDC 69488-003-70

Lot No.: {XXX XXXXXX X-XX}

EXP: {MMM/DD/YYYY hh:mm am/pm UTC+XX:XX}

**SHIPPER**  
Advanced  
Accelerator Applications  
< Address 1 >  
< Address 2 >  
< Postal Code, City >  
< Country >

**CONSIGNEE**  
< Customer Name >  
< Address 1 >  
< Address 2 >  
< Address 3 >  
< Postal Code, City >  
< Country >

### LUTATHERA

lutetium lu 177 dotatate injection

#### Product Information

<b>Product Type</b>	HUMAN PRESCRIPTION DRUG	<b>Item Code (Source)</b>	NDC:69488-003
<b>Route of Administration</b>	INTRAVENOUS		

#### Active Ingredient/Active Moiety

Ingredient Name	Basis of Strength	Strength
LUTETIUM OXODOTREOTIDE LU-177 (UNII: AE221IM3BB) (LUTETIUM OXODOTREOTIDE LU-177 - UNII:AE221IM3BB)	LUTETIUM OXODOTREOTIDE LU-177	10 mCi in 1 mL

#### Inactive Ingredients

Ingredient Name	Strength
ACETIC ACID (UNII: Q40Q9N063P)	
SODIUM ACETATE (UNII: 4550K0SC9B)	
GENTISIC ACID (UNII: VP36V95O3T)	
SODIUM HYDROXIDE (UNII: 55X04QC32I)	
PENTETIC ACID (UNII: 7A314HQM0I)	
SODIUM CHLORIDE (UNII: 451W47IQ8X)	
ASCORBIC ACID (UNII: PQ6CK8PD0R)	
WATER (UNII: 059QF0KO0R)	

#### Packaging

#	Item Code	Package Description	Marketing Start Date	Marketing End Date

1	NDC:69488-003-01	1 in 1 PACKAGE	01/26/2018	
1		20.5 mL in 1 VIAL; Type 0: Not a Combination Product		

## Marketing Information

Marketing Category	Application Number or Monograph Citation	Marketing Start Date	Marketing End Date
NDA	NDA208700	01/26/2018	

**Labeler** - Advanced Accelerator Applications USA, Inc (051714355)

## Establishment

Name	Address	ID/FEI	Business Operations
Advanced Accelerator Applications USA, Inc.		080178357	API MANUFACTURE(69488-003) , MANUFACTURE(69488-003) , ANALYSIS(69488-003) , LABEL(69488-003) , PACK(69488-003)

## Establishment

Name	Address	ID/FEI	Business Operations
Advanced Accelerator Applications (Italy) srl		516796146	API MANUFACTURE(69488-003) , MANUFACTURE(69488-003) , ANALYSIS(69488-003) , LABEL(69488-003) , PACK(69488-003)

## Establishment

Name	Address	ID/FEI	Business Operations
Advanced Accelerator Applications (Italy) S.r.l.		441182729	ANALYSIS(69488-003)

## Establishment

Name	Address	ID/FEI	Business Operations
C.A.T. GmbH & Co. Chromatographie und Analysentechnik KG		324868512	ANALYSIS(69488-003)

## Establishment

Name	Address	ID/FEI	Business Operations
Osterreichische Agentur fur Gesundheit and Ernahrungssicherheit Gmbh		302084475	ANALYSIS(69488-003)

## Establishment

Name	Address	ID/FEI	Business Operations
IDB Radiopharmacy B.V.		489201088	API MANUFACTURE(69488-003)

## Establishment

Name	Address	ID/FEI	Business Operations
piCHEM Forschungs-und Entwicklungs GmbH		303575690	API MANUFACTURE(69488-003)

## Establishment

Name	Address	ID/FEI	Business Operations
------	---------	--------	---------------------

Revised: 4/2024

Advanced Accelerator Applications USA, Inc