

LAMIVUDINE - lamivudine tablet, film coated
Camber Pharmaceuticals, Inc.

HIGHLIGHTS OF PRESCRIBING INFORMATION

These highlights do not include all the information needed to use LAMIVUDINE TABLETS (HBV) safely and effectively. See full prescribing information for LAMIVUDINE TABLETS (HBV).

LAMIVUDINE tablets (HBV) for oral use

Initial U.S. Approval: 1995

WARNING: LACTIC ACIDOSIS AND SEVERE HEPATOMEGALY WITH STEATOSIS, EXACERBATIONS OF HEPATITIS B, and RISK OF HIV-1 RESISTANCE IF LAMIVUDINE TABLETS (HBV) IS USED IN PATIENTS WITH UNRECOGNIZED OR UNTREATED HIV-1 INFECTION

See full prescribing information for complete boxed warning

- Lactic acidosis and severe hepatomegaly with steatosis, including fatal cases, have been reported with the use of nucleoside analogues. (5.1)
- Severe acute exacerbations of hepatitis B have been reported in patients who have discontinued anti-hepatitis B therapy (including lamivudine tablets (HBV) Monitor hepatic function closely in these patients and, if appropriate, initiate anti-hepatitis B treatment. (5.2)
- Lamivudine tablets (HBV) contain a lower dose of the same active ingredient (lamivudine) as lamivudine tablets and oral solution used to treat HIV-1 infection. HIV-1 resistance may emerge in chronic hepatitis B patients with unrecognized or untreated HIV1 infection because the lamivudine dosage in lamivudine tablets (HBV) is subtherapeutic and monotherapy is inappropriate for the treatment of HIV-1 infection. HIV counseling and testing should be offered to all patients before beginning treatment with lamivudine tablets (HBV) and periodically during treatment. (5.3)

RECENT MAJOR CHANGES

Warnings and Precautions, Coadministration with Other Removed – Medications Containing Lamivudine or Emtricitabine 05/2017
(previous 5.4)

INDICATIONS AND USAGE

- Lamivudine tablets (HBV) are a nucleoside analogue reverse transcriptase inhibitor indicated for the treatment of chronic hepatitis B virus infection associated with evidence of hepatitis B viral replication and active liver inflammation. (1) (1)

DOSAGE AND ADMINISTRATION

- Adults: 100 mg, once daily. (2.2)
- Pediatric Patients aged 2 to 17 years: 3 mg per kg once daily up to 100 mg once daily. Prescribe oral solution for pediatric patients requiring less than 100 mg daily. (2.3)
- Patients with Renal Impairment: Doses of lamivudine tablets (HBV) must be adjusted in accordance with renal function. (2.4)
- Lamivudine tablets (HBV) should not be used with other medications that contain lamivudine or emtricitabine. (2.5)

DOSAGE FORMS AND STRENGTHS

- Tablets: 100 mg (3) (3)

CONTRAINDICATIONS

Lamivudine tablets (HBV) is contraindicated in patients with previous hypersensitivity reaction to lamivudine. (4)

WARNINGS AND PRECAUTIONS

- Emergence of Resistance-Associated HBV Substitutions: Monitor ALT and HBV DNA levels during lamivudine treatment to aid in treatment decisions if emergence of viral mutants or loss of therapeutic response is suspected. (2.6, 5.4)

ADVERSE REACTIONS

- The most common reported adverse reactions in those receiving lamivudine tablets (HBV) (incidence greater than or equal to 10% and reported at a rate greater than placebo) were ear, nose and throat infections, sore throat, and diarrhea. (6.1)

To report SUSPECTED ADVERSE REACTIONS, contact Hetero Labs Limited at 866-495-1995 or FDA at 1-800-

----- **DRUG INTERACTIONS** -----

Sorbitol: Coadministration of lamivudine and sorbitol may result in decreased lamivudine concentrations; when possible, avoid chronic coadministration. Consider more frequent monitoring of HBV viral load when chronic coadministration cannot be avoided.(7.2)

See 17 for **PATIENT COUNSELING INFORMATION** and **FDA-approved patient labeling**.

Revised: 12/2019

FULL PRESCRIBING INFORMATION: CONTENTS*

BOXED WARNING

1 INDICATIONS & USAGE

2 DOSAGE & ADMINISTRATION

- 2.1 HIV Counseling and Testing
- 2.2 Recommended Dosage for Adult Patients
- 2.3 Recommended Dosage for Pediatric Patients
- 2.4 Patients with Renal Impairment
- 2.5 Important Administration Instructions
- 2.6 Assessing Patients during Treatment

3 DOSAGE FORMS & STRENGTHS

4 CONTRAINDICATIONS

5 WARNINGS AND PRECAUTIONS

- 5.1 Lactic Acidosis and Severe Hepatomegaly with Steatosis
- 5.2 Exacerbations of Hepatitis after Discontinuation of Treatment
- 5.3 Risk of HIV-1 Resistance if Lamivudine Tablets (HBV) Is Used in Patients with Unrecognized or Untreated HIV-1 Infection
- 5.4 Emergence of Resistance-Associated HBV Substitutions

6 ADVERSE REACTIONS

- 6.1 Clinical Trials Experience
- 6.2 Postmarketing Experience

7 DRUG INTERACTIONS

- 7.1 Drugs Inhibiting Organic Cation Transporters
- 7.2 Sorbitol

8 USE IN SPECIFIC POPULATIONS

- 8.1 Pregnancy
- 8.2 Lactation
- 8.4 Pediatric Use
- 8.5 Geriatric Use
- 8.6 Patients With Impaired Renal Function
- 8.7 Patients With Impaired Liver Function

10 OVERDOSAGE

11 DESCRIPTION

12 CLINICAL PHARMACOLOGY

- 12.1 Mechanism of Action
- 12.3 Pharmacokinetics
- 12.4 Microbiology

13 NONCLINICAL TOXICOLOGY

- 13.1 Carcinogenesis & Mutagenesis & Impairment Of Fertility

14 CLINICAL STUDIES

- 14.1 Clinical Studies of Lamivudine Tablets (HBV) in Adult Patients
- 14.2 Clinical Studies of Lamivudine Tablets (HBV) in Pediatric Subjects

16 HOW SUPPLIED/STORAGE AND HANDLING

17 PATIENT COUNSELING INFORMATION

* Sections or subsections omitted from the full prescribing information are not listed.

FULL PRESCRIBING INFORMATION

BOXED WARNING

WARNING: LACTIC ACIDOSIS AND SEVERE HEPATOMEGALY WITH STEATOSIS, EXACERBATIONS OF HEPATITIS B, and RISK OF HIV-1 RESISTANCE IF LAMIVUDINE TABLETS (HBV) IS USED IN PATIENTS WITH UNRECOGNIZED OR UNTREATED HIV-1

Lactic acidosis and severe hepatomegaly with steatosis, including fatal cases, have been reported with the use of nucleoside analogues and other antiretrovirals.

Discontinue lamivudine tablets (HBV) if clinical or laboratory findings suggestive of lactic acidosis or pronounced hepatotoxicity occur [see Warnings and Precautions (5.1)]. Severe acute exacerbations of hepatitis B have been reported in patients who have discontinued anti-hepatitis B therapy (including lamivudine tablets (HBV)). Hepatic function should be monitored closely with both clinical and laboratory follow-up for at least several months in patients who discontinue anti-hepatitis B therapy. If appropriate, initiation of anti-hepatitis B therapy may be warranted [see Warnings and Precautions (5.2)].

Lamivudine tablets (HBV) are not approved for the treatment of HIV-1 infection because the lamivudine dosage in lamivudine tablets (HBV) is subtherapeutic and monotherapy is inappropriate for the treatment of HIV-1 infection. HIV-1 resistance may emerge in chronic hepatitis B-infected patients with unrecognized or untreated HIV-1 infection. HIV

Counseling and testing should be offered to all patients before beginning treatment with lamivudine tablets (HBV) and periodically during treatment [see Warnings and Precautions (5.3)]

1 INDICATIONS & USAGE

Lamivudine tablets (HBV) are indicated for the treatment of chronic hepatitis B virus (HBV) infection associated with evidence of hepatitis B viral replication and active liver inflammation [see Clinical Studies (14.1, 14.2)].

The following points should be considered when initiating therapy with lamivudine tablets (HBV):

- Due to high rates of resistance development in treated patients, initiation of treatment with lamivudine tablets (HBV) should only be considered when the use of an alternative antiviral agent with a higher genetic barrier to resistance is not available or appropriate.
- Lamivudine tablets (HBV) have not been evaluated in patients co-infected with HIV, hepatitis C virus (HCV), or hepatitis delta virus.
- Lamivudine tablets (HBV) have not been evaluated in liver transplant recipients or in patients with chronic hepatitis B virus infection with decompensated liver disease.

2 DOSAGE & ADMINISTRATION

2.1 HIV Counseling and Testing

HIV counseling and testing should be offered to all patients before beginning treatment with lamivudine tablets (HBV) and periodically during treatment because of the risk of emergence of resistant HIV-1 and limitation of treatment options if lamivudine tablets (HBV) is prescribed to treat chronic hepatitis B infection in a patient who has unrecognized HIV-1 infection or acquires HIV-1 infection during treatment [see Warnings and Precautions (5.3)].

2.2 Recommended Dosage for Adult Patients

The recommended oral dosage of lamivudine tablets (HBV) is 100 mg once daily.

2.3 Recommended Dosage for Pediatric Patients

The recommended oral dosage of lamivudine tablets (HBV) for pediatric patients aged 2 to 17 years is 3 mg per kg once daily up to a maximum daily dosage of 100 mg. The oral solution formulation should be prescribed for patients requiring a dose less than 100 mg or if unable to swallow tablets.

2.4 Patients with Renal Impairment

Dosage recommendations for adult patients with reduced renal function are provided in Table 1 [see *Clinical Pharmacology* (12.3)].

Table 1. Dosage of Lamivudine Tablets (HBV) in Adult Patients with Renal Impairment

| Creatinine Clearance (mL/min) | Recommended Dosage of Lamivudine Tablets (HBV) |
|--------------------------------------|---|
| ≥50 | 100 mg once daily |
| 30 -49 | 100 mg first dose, then 50 mg once daily |
| 15 -29 | 100 mg first dose, then 25 mg once daily |
| 5 -14 | 35 mg first dose, then 15 mg once daily |
| <5 | 35 mg first dose, then 10 mg once daily |

Following correction of the dosage for renal impairment, no additional dosage modification of lamivudine tablets (HBV) is required after routine (4-hour) hemodialysis or peritoneal dialysis [see *Clinical Pharmacology* (12.3)].

There are insufficient data to recommend a specific dosage of lamivudine tablets (HBV) in pediatric patients with renal impairment.

2.5 Important Administration Instructions

- Lamivudine tablets (HBV) may be administered with or without food.
- The tablets and oral solution may be used interchangeably [see *Clinical Pharmacology* (12.3)].
- The oral solution should be used for doses less than 100 mg.
- Lamivudine tablets (HBV) should not be used with other medications that contain lamivudine or medications that contain emtricitabine

2.6 Assessing Patients during Treatment

Patients should be monitored regularly during treatment by a physician experienced in the management of chronic hepatitis B. During treatment, combinations of events such as return of persistently elevated ALT, increasing levels of HBV DNA over time after an initial decline below assay limit, progression of clinical signs or symptoms of hepatic disease, and/or worsening of hepatic necroinflammatory findings may be considered as potentially reflecting loss of therapeutic response. Such observations should be taken into consideration when determining the advisability of continuing therapy with lamivudine tablets (HBV).

The optimal duration of treatment, the durability of HBeAg seroconversions occurring during treatment, and the relationship between treatment response and long-term outcomes such as hepatocellular

carcinoma or decompensated cirrhosis are not known.

3 DOSAGE FORMS & STRENGTHS

- Lamivudine tablets (HBV): 100 mg are pink colored, capsule shaped, biconvex, film coated tablets, debossed with '37' on one side and 'I' on the other side.

4 CONTRAINDICATIONS

Lamivudine tablets (HBV) are contraindicated in patients with a previous hypersensitivity reaction to lamivudine.

5 WARNINGS AND PRECAUTIONS

5.1 Lactic Acidosis and Severe Hepatomegaly with Steatosis

Lactic acidosis and severe hepatomegaly with steatosis, including fatal cases, have been reported with the use of nucleoside analogues alone or in combination, including lamivudine tablets (HBV) and other antiretrovirals. A majority of these cases have been in women. Obesity and prolonged nucleoside exposure may be risk factors. Most of these reports have described patients receiving nucleoside analogues for treatment of HIV infection, but there have been reports of lactic acidosis in patients receiving lamivudine for hepatitis B. Caution should be exercised when administering lamivudine tablets (HBV) to any patient with known risk factors for liver disease; however, cases also have been reported in patients with no known risk factors. Treatment with lamivudine tablets (HBV) should be suspended in any patient who develops clinical or laboratory findings suggestive of lactic acidosis or pronounced hepatotoxicity (which may include hepatomegaly and steatosis even in the absence of marked transaminase elevations).

5.2 Exacerbations of Hepatitis after Discontinuation of Treatment

Clinical and laboratory evidence of exacerbations of hepatitis have occurred after discontinuation of lamivudine tablets (HBV) (these have been primarily detected by serum ALT elevations, in addition to the re-emergence of HBV DNA commonly observed after stopping treatment; see Table 4 for more information regarding frequency of posttreatment ALT elevations) [see *Adverse Reactions* (6.1)]. Although most events appear to have been self-limited, fatalities have been reported in some cases. The causal relationship of hepatitis exacerbation after discontinuation of lamivudine tablets (HBV) has not been clearly established. Patients should be closely monitored with both clinical and laboratory follow-up for at least several months after stopping treatment with lamivudine tablets (HBV). There is insufficient evidence to determine whether re-initiation of lamivudine tablets (HBV) alters the course of posttreatment exacerbations of hepatitis.

5.3 Risk of HIV-1 Resistance if Lamivudine Tablets (HBV) Is Used in Patients with Unrecognized or Untreated HIV-1 Infection

Lamivudine tablets (HBV) contain a lower lamivudine dose than the lamivudine dose used to treat HIV-1 infection with lamivudine tablets and oral solution or with lamivudine-containing antiretroviral fixed-dose combination products.

Lamivudine tablets (HBV) is not appropriate for patients co-infected with HBV and HIV-1. If a patient with unrecognized or untreated HIV-1 infection is prescribed lamivudine tablets (HBV) for the treatment of HBV, rapid emergence of HIV-1 resistance is likely to result because of the

subtherapeutic dose and the inappropriate use of monotherapy for HIV-1 treatment. HIV counseling and testing should be offered to all patients before beginning treatment with lamivudine tablets (HBV) and periodically during treatment because of the risk of rapid emergence of resistant HIV-1 and limitation of treatment options if lamivudine tablets (HBV) is prescribed to treat chronic hepatitis B in a patient who has unrecognized or untreated HIV-1 infection or who acquires HIV-1 infection during treatment.

5.4 Emergence of Resistance-Associated HBV Substitutions

In controlled clinical trials, YMDD-mutant HBV was detected in subjects with on- lamivudine tablets (HBV) re-appearance of HBV DNA after an initial decline below the solution-hybridization assay limit [see *Microbiology (12.4)*]. Subjects treated with lamivudine tablets (HBV) (adults and children) with YMDD-mutant HBV at 52 weeks showed diminished treatment responses in comparison with subjects treated with lamivudine tablets (HBV) without evidence of YMDD substitutions, including the following: lower rates of HBeAg seroconversion and HBeAg loss (no greater than placebo recipients), more frequent return of positive HBV DNA, and more frequent ALT elevations. In the controlled trials, when subjects developed YMDD-mutant HBV, they had a rise in HBV DNA and ALT from their own previous on-treatment levels. Progression of hepatitis B, including death, has been reported in some subjects with YMDD-mutant HBV, including subjects from the liver transplant setting and from other clinical trials. In clinical practice, monitoring of ALT and HBV DNA levels during treatment with lamivudine tablets (HBV) may aid in treatment decisions if emergence of viral mutants is suspected.

6 ADVERSE REACTIONS

The following adverse reactions are discussed in greater detail in other sections of the labeling:

- Lactic acidosis and severe hepatomegaly with steatosis [see *Warnings and Precautions (5.1)*].
- Exacerbations of hepatitis B after discontinuation of treatment [see *Warnings and Precautions (5.2)*].
- Risk of emergence of resistant HIV-1 infection [see *Warnings and Precautions (5.3)*].
- Risk of emergence of resistant HBV infection [see *Warnings and Precautions (5.4)*].

6.1 Clinical Trials Experience

Because clinical trials are conducted under widely varying conditions, adverse reaction rates observed in the clinical trials of a drug cannot be directly compared with rates in the clinical trials of another drug and may not reflect the rates observed in clinical practice.

Clinical Trials Experience in of Adult Subjects with Chronic HBV Infection

Clinical adverse reactions (regardless of investigator’s causality assessment) reported in greater than or equal to 10% of subjects who received lamivudine tablets (HBV) and reported at a rate greater than in subjects who received placebo are listed in Table 2.

Table 2. Clinical Adverse Reactions^a Reported in Greater than or Equal to 10% of Subjects who Received Lamivudine Tablets (HBV) for 52 to 68 Weeks and at an Incidence Greater than Placebo (Trials 1 to 3)

| Adverse Event | Lamivudine Tablets (HBV) (n = 332) | Placebo (n = 200) |
|----------------------------------|------------------------------------|-------------------|
| Ear, Nose, and Throat | | |
| Ear, nose, and throat infections | 25% | 21% |
| Sore throat | 13% | 8% |
| Gastrointestinal | | |
| Diarrhea | 14% | 12% |

^a Includes adverse events regardless of severity and causality assessment. Specified laboratory abnormalities reported in subjects who received lamivudine tablets (HBV) and reported at a rate greater than in subjects who received placebo are listed in Table 3.

Table 3. Frequencies of Specified Laboratory Abnormalities Reported during Treatment at a Greater Frequency in Subjects Treated with Lamivudine Tablets (HBV) than with Placebo (Trials 1 to 3)^a

| Test (Abnormal Level) | Subjects with Abnormality/Subjects with Observations | |
|--|--|---------|
| | Lamivudine Tablets (HBV) | Placebo |
| Serum Lipase ≥ 2.5 x ULN ^b | 10% | 7% |
| CPK ≥ 7 x baseline | 9% | 5% |
| Platelets $< 50,000/\text{mm}^3$ | 4% | 3% |

^a Includes subjects treated for 52 to 68 weeks.

^b Includes observations during and after treatment in the 2 placebo-controlled trials that collected this information.

ULN = Upper limit of normal.

In subjects followed for up to 16 weeks after discontinuation of treatment, posttreatment ALT elevations were observed more frequently in subjects who had received lamivudine tablets (HBV) than in subjects who had received placebo. A comparison of ALT elevations between Weeks 52 and 68 in subjects who discontinued lamivudine tablets (HBV) at Week 52 and subjects in the same trials who received placebo throughout the treatment course is shown in Table 4.

Table 4. Posttreatment ALT Elevations with No-Active-Treatment Follow-up (Trials 1 and 3)

| Abnormal Value | Subjects with ALT Elevation/ Subjects with Observations ^a | |
|--|--|----------------------|
| | Lamivudine Tablets (HBV) ^b | Placebo ^b |
| ALT ≥ 2 x baseline value | 27% | 19% |
| ALT ≥ 3 x baseline value ^c | 21% | 8% |
| ALT ≥ 2 x baseline value and absolute ALT > 500 IU/L | 15% | 7% |
| ALT ≥ 2 x baseline value; and bilirubin > 2 x ULN and ≥ 2 x baseline value | 0.7% | 0.9% |

^a Each subject may be represented in one or more category.

^b During treatment phase.

^c Comparable to a Grade 3 toxicity in accordance with modified WHO criteria.

ULN = Upper limit of normal.

Clinical Trials Experience in Pediatric Subjects with Chronic HBV Infection

Most commonly observed adverse reactions in the pediatric trials were similar to those in adult trials. Posttreatment transaminase elevations were observed in some subjects followed after cessation of lamivudine tablets (HBV).

6.2 Postmarketing Experience

The following adverse reactions have been identified during post-approval use of lamivudine tablets (HBV). Because these reactions are reported voluntarily from a population of unknown size, it is not always possible to reliably estimate their frequency or establish a causal relationship to drug exposure. These reactions have been chosen for inclusion due to a combination of their seriousness, frequency of reporting, or potential causal connection to lamivudine.

Blood and Lymphatic

Anemia (including pure red cell aplasia and severe anemias progressing on therapy), lymphadenopathy, splenomegaly, thrombocytopenia.

Digestive

Stomatitis.

Endocrine and Metabolic

Hyperglycemia.

General

Weakness.

Hepatic and Pancreatic

Lactic acidosis and steatosis [see Warnings and Precautions (5.1)] ,posttreatment exacerbations of hepatitis [see Warnings and Precautions (5.2)] , pancreatitis.

Hypersensitivity

Anaphylaxis, urticaria.

Musculoskeletal

Cramps, rhabdomyolysis.

Nervous

Paresthesia, peripheral neuropathy.

Respiratory

Abnormal breath sounds/wheezing.

Skin

Alopecia, pruritus, rash.

7 DRUG INTERACTIONS

7.1 Drugs Inhibiting Organic Cation Transporters

Lamivudine is predominantly eliminated in the urine by active organic cationic secretion. The possibility of interactions with other drugs administered concurrently should be considered, particularly when their main route of elimination is active renal secretion via the organic cationic transport system (e.g., trimethoprim) [see Clinical Pharmacology (12.3)]. No data are available regarding interactions with other drugs that have renal clearance mechanisms similar to that of lamivudine.

7.2 Sorbitol

Coadministration of single doses of lamivudine and sorbitol resulted in a sorbitol dose-dependent reduction in lamivudine exposures. When possible, avoid use of sorbitol-containing medicines with lamivudine [see Clinical Pharmacology (12.3)]. Consider more frequent monitoring of HBV viral load when chronic coadministration cannot be avoided.

8 USE IN SPECIFIC POPULATIONS

8.1 Pregnancy

Teratogenic Effects:

Pregnancy Exposure Registry

There is a pregnancy exposure registry that monitors pregnancy outcomes in women exposed to lamivudine during pregnancy. Healthcare providers are encouraged to register patients by calling the Antiretroviral Pregnancy Registry (APR) at 1-800-258-4263.

Risk Summary

Available data from the APR show no substantial difference in the risk of overall major birth defects for lamivudine compared with the background rate for major birth defects of 2.7% reported in the U.S. reference population of the Metropolitan Atlanta Congenital Defects Program (MACDP). The APR uses the MACDP as a U.S. reference population for birth defects in the general population. The MACDP evaluates women and infants from a limited geographic area and does not include outcomes for births that occur at less than 20 weeks gestation. Of over 11,000 women exposed to lamivudine in the APR, less than 1% were treated for HBV. The majority of women exposed to lamivudine in the APR were HIV-1-infected and were treated with higher doses of lamivudine compared with HBV mono-infected women. In addition to lamivudine, HIV-1-infected women were also treated with other concomitant medications for HIV-1 infection [see Data]. The estimated rate of miscarriage for women exposed to lamivudine in the indicated population is unknown. The estimated background rate of miscarriage in clinically recognized pregnancies in the U.S. general population is 15% to 20%.

Oral administration of lamivudine to pregnant rabbits during organogenesis resulted in embryolethality at systemic exposure (AUC) similar to the recommended clinical dose; however, no adverse developmental effects were observed with oral administration of lamivudine to pregnant rats during organogenesis at plasma concentrations (C_{max}) 60 times the recommended clinical dose [see Data].

Data

Human Data: Based on prospective reports from the APR of over 11,000 exposures to lamivudine (including over 4,600 exposed in the first trimester) during pregnancy resulting in live births, less than 1% of which were patients with HBV, there was no substantial difference in birth defects with lamivudine compared with the birth defect rate of 2.7% observed in the comparator population of the MACDP. The prevalence of birth defects in live births was 3.1% (95% CI: 2.6% to 3.6%) following first trimester exposure to lamivudine-containing regimens and 2.8% (95% CI: 2.5% to 3.3%) following second/third trimester exposure to lamivudine-containing regimens.

The pharmacokinetics of lamivudine in patients with HBV or HIV-1 infection and in healthy volunteers are similar at similar doses. Lamivudine pharmacokinetics were studied in pregnant women with HIV-1 infection during 2 clinical trials conducted in South Africa. The trials assessed pharmacokinetics in 16 women at 36 weeks gestation using 150 mg lamivudine twice daily (3 times the recommended daily dosage for HBV) with zidovudine, 10 women at 38 weeks gestation using 150 mg lamivudine twice daily (3 times the recommended daily dosage for HBV) with zidovudine, and 10 women at 38 weeks gestation using lamivudine 300 mg twice daily (6 times the recommended daily dosage for HBV) without other antiretrovirals. Lamivudine concentrations were generally similar in maternal, neonatal, and umbilical cord serum samples. In a subset of subjects, amniotic fluid specimens were collected following natural rupture of membranes and confirmed that lamivudine crosses the placenta in humans. Based on limited data at delivery, median (range) amniotic fluid concentrations of lamivudine were 3.9- (1.2- to 12.8-) fold greater compared with paired maternal serum concentrations (n = 8).

Animal Data: Lamivudine was administered orally to pregnant rats (at 90, 600, and 4,000 mg per kg per day) and rabbits (at 90, 300, and 1,000 mg per kg per day and at 15, 40, and 90 mg per kg per day) during organogenesis (on gestation Days 7 through 16 [rat] and 8 through 20 [rabbit]). No evidence of fetal malformations due to lamivudine was observed in rats and rabbits at doses producing plasma concentrations (C_{max}) approximately 53 or more times higher than human exposure at the recommended daily dose. Evidence of early embryolethality in the absence of maternal toxicity was seen in the rabbit at systemic exposures (AUC) similar to those observed in humans, but there was no indication of this

effect in the rat at plasma concentrations (C_{max}) 60 times higher than human exposure at the recommended daily dose. Studies in pregnant rats showed that lamivudine is transferred to the fetus through the placenta. In the fertility/pre and postnatal development study in rats, lamivudine was administered orally at doses of 180, 900, and 4,000 mg per kg per day (from prior to mating through postnatal Day 20). In the study, development of the offspring, including fertility and reproductive performance, was not affected by maternal administration of lamivudine at plasma concentrations (C_{max}) 104 times higher than human exposure.

8.2 Lactation

Risk Summary

Lamivudine is present in human milk. There is no information available regarding lamivudine concentrations in milk from lactating women receiving lamivudine for treatment of HBV infection. However, in lactating women with HIV-1 infection being treated with lamivudine at 3 or 6 times the recommended daily dose for HBV, lamivudine concentrations in milk were similar to those observed in serum [see Data]. The lamivudine dose received by a breastfed infant of a mother being treated for HIV-1 infection was estimated to be approximately 6% of the recommended daily lamivudine dose for HBV in children over 2 years of age.

There is no information available regarding the effects of the drug on the breastfed infant or on milk production.

The developmental and health benefits of breastfeeding should be considered along with the mother's clinical need for lamivudine tablets (HBV) and any potential adverse effects on the breastfed infant from lamivudine or from the underlying maternal condition.

Data

In mothers with HIV receiving lamivudine monotherapy (300 mg twice daily [6 times the recommended daily dosage for HBV]) or combination therapy (150 mg lamivudine twice daily [3 times the recommended daily dosage for HBV] with 300 mg zidovudine twice daily), the median breast milk to plasma lamivudine concentration ratio was 0.6 to 3.3, and the estimated infant daily dose was approximately 6% of the recommended 3-mg-per-kg daily lamivudine dose for treatment of HBV in children over 2 years of age. In breastfed infants of mothers with HIV-1 infection receiving lamivudine therapy, the blood concentrations of lamivudine decreased after delivery and were undetectable at 6 months despite constant milk concentrations. This is consistent with increased lamivudine renal clearance in the first 6 months of life.

8.4 Pediatric Use

Lamivudine tablets (HBV) is indicated for the treatment of chronic hepatitis B virus infection in pediatric patients aged 2 to 17 years [see Indications and Usage (1), Clinical Pharmacology (12.3), Clinical Studies (14.2)]. The safety and efficacy of lamivudine tablets (HBV) in pediatric patients younger than 2 years have not been established.

8.5 Geriatric Use

Clinical trials of lamivudine tablets (HBV) did not include sufficient numbers of subjects aged 65 and over to determine whether they respond differently from younger subjects. In general, caution should be exercised in the administration of lamivudine tablets (HBV) in elderly patients reflecting the greater frequency of decreased hepatic, renal, or cardiac function, and of concomitant disease or other drug therapy [see Dosage and Administration (2.4), Clinical Pharmacology (12.3)].

8.6 Patients With Impaired Renal Function

Reduction of the dosage of lamivudine tablets (HBV) is recommended for patients with impaired renal function [see Dosage and Administration (2.4), Clinical Pharmacology (12.3)].

8.7 Patients With Impaired Liver Function

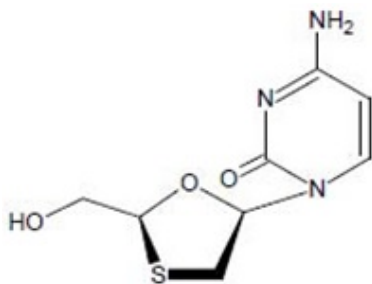
No dose adjustment for lamivudine is required for patients with impaired hepatic function.

10 OVERDOSAGE

There is no known specific treatment for overdose with lamivudine tablets (HBV). If overdose occurs, the patient should be monitored, and standard supportive treatment applied, as required. Because a negligible amount of lamivudine was removed via (4-hour) hemodialysis, continuous ambulatory peritoneal dialysis, and automated peritoneal dialysis, it is not known if continuous hemodialysis would provide clinical benefit in a lamivudine overdose event.

11 DESCRIPTION

Lamivudine tablet (HBV) is a synthetic nucleoside analog with activity against HBV. The chemical name of lamivudine, USP is 2(1H)-Pyrimidinone, 4-amino-1-[2-(hydroxymethyl)-1,3-oxathiolan-5-yl], (2R-cis)-. It has a molecular formula of $C_8H_{11}N_3O_3S$ and a molecular weight of 229.26. It has the following structural formula:



Lamivudine USP is a white to an off white solid and soluble in water.

Lamivudine Tablets (HBV) are for oral administration. Each tablet contains 100 mg of lamivudine, USP and the inactive ingredients crosopvidone, isomalt, isopropyl alcohol, magnesium stearate and methylene chloride. The tablets are coated with Opadry Pink containing hypromellose, iron oxide red, polyethylene glycol, polysorbate 80, titanium dioxide and yellow iron oxide.

12 CLINICAL PHARMACOLOGY

12.1 Mechanism of Action

Lamivudine is an antiviral agent with activity against HBV [see Microbiology (12.4)].

12.3 Pharmacokinetics

Pharmacokinetics in Adults

The pharmacokinetic properties of lamivudine have been studied as single and multiple oral doses ranging from 5 mg to 600 mg per day administered to HBV-infected subjects.

Absorption and Bioavailability: Following single oral doses of 100 mg, the peak serum lamivudine concentration (C_{max}) in HBV-infected patients (steady state) and healthy subjects (single dose) was 1.28 ± 0.56 mcg per mL and 1.05 ± 0.32 mcg per mL (mean \pm SD), respectively, which occurred between 0.5 and 2 hours after administration. The area under the plasma concentration versus time curve ($AUC_{[0 \text{ to } 24\text{h}]}$) following 100-mg lamivudine oral single and repeated daily doses to steady state was 4.3 ± 1.4 (mean \pm SD) and 4.7 ± 1.7 mcg•hour per mL, respectively. The relative bioavailability of the tablet and oral solution were demonstrated in healthy subjects. Although the solution demonstrated a slightly higher peak serum concentration (C_{max}), there was no significant difference in systemic exposure (AUC) between the oral solution and the tablet. Therefore, the oral solution and the tablet may be used interchangeably.

After oral administration of lamivudine once daily to HBV-infected adults, the AUC and C_{max} increased in proportion to dose over the range from 5 mg to 600 mg once daily.

Absolute bioavailability in 12 adult subjects was $86\% \pm 16\%$ (mean \pm SD) for the 150-mg tablet and $87\% \pm 13\%$ for the 10-mg per mL oral solution.

Effects of Food on Oral Absorption: Lamivudine tablets (HBV) may be administered with or without food. The 100-mg tablet was administered orally to 24 healthy subjects on 2 occasions, once in the fasted state and once with food (standard meal: 967 kcal; 67 grams fat, 33 grams protein, 58 grams carbohydrate). There was no significant difference in systemic exposure (AUC) in the fed and fasted states.

Distribution: The apparent volume of distribution after IV administration of lamivudine to 20 asymptomatic HIV-1-infected subjects was 1.3 ± 0.4 L per kg, suggesting that lamivudine distributes into extravascular spaces. Volume of distribution was independent of dose and did not correlate with body weight.

Binding of lamivudine to human plasma proteins is less than 36% and independent of dose. *In vitro* studies showed that over the concentration range of 0.1 to 100 mcg per mL, the amount of lamivudine associated with erythrocytes ranged from 53% to 57% and was independent of concentration.

Metabolism: Metabolism of lamivudine is a minor route of elimination. In humans, the only known metabolite of lamivudine is the trans-sulfoxide metabolite (approximately 5% of an oral dose after 12 hours). Serum concentrations of this metabolite have not been determined. Lamivudine is not significantly metabolized by cytochrome P450 enzymes.

Elimination: The majority of lamivudine is eliminated unchanged in urine by active organic cationic secretion. In 9 healthy subjects given a single 300-mg oral dose of lamivudine, renal clearance was 199.7 ± 56.9 mL per min (mean \pm SD). In 20 HIV-1-infected subjects given a single IV dose, renal clearance was 280.4 ± 75.2 mL per min (mean \pm SD), representing $71\% \pm 16\%$ (mean \pm SD) of total clearance of lamivudine.

In most single-dose trials in HIV-1-infected subjects, HBV-infected subjects, or healthy subjects with serum sampling for 24 hours after dosing, the observed mean elimination half-life ($t^{1/2}$) ranged from 5 to 7 hours. In HIV-1-infected subjects, total clearance was 398.5 ± 69.1 mL per min (mean \pm SD). Oral clearance and elimination half-life were independent of dose and body weight over an oral dosing range of 0.25 to 10 mg per kg.

Specific Populations

Patients With Renal Impairment: The pharmacokinetic properties of lamivudine have been determined in healthy adults and in adults with impaired renal function, with and without hemodialysis (Table 5).

Table 5. Pharmacokinetic Parameters (Mean \pm SD) Dose-Normalized to a Single 100-mg Oral

Dose of Lamivudine in Adults With Varying Degrees of Renal Function

| Parameter | Creatinine Clearance Criterion (Number of Subjects) | | |
|----------------------------------|--|-------------------------|-----------------------|
| | ≥80 mL/min (n = 9) | 20-59 mL/min (n = 8) | <20 mL/min (n = 6) |
| Creatinine Clearance (mL/min) | 97 (range 82-117) | 39 (range 25-49) | 15 (range 13-19) |
| C _{max} (mcg/mL) | 1.31 ± 0.35 | 1.85 ± 0.40 | 1.55 ± 0.31 |
| AUC (mcg.h/mL) | 5.28 ± 1.01 | 14.67 ± 3.74 | 27.33 ± 6.56 |
| Cl/F (mL/min) | 326.4 ± 63.8 | 120.1 ± 29.5 | 64.5 ± 18.3 |

Exposure (AUC), C_{max}, and half-life increased with diminishing renal function (as expressed by creatinine clearance). Apparent total oral clearance (Cl/F) of lamivudine decreased as creatinine clearance decreased. T_{max} was not significantly affected by renal function. Based on these observations, it is recommended that the dosage of lamivudine be modified in patients with renal impairment [see *Dosage and Administration (2.4)*].

Hemodialysis increases lamivudine clearance from a mean of 64 to 88 mL per min; however, the length of time of hemodialysis (4 hours) was insufficient to significantly alter mean lamivudine exposure after a single-dose administration. Continuous ambulatory peritoneal dialysis and automated peritoneal dialysis have negligible effects on lamivudine clearance. Therefore, it is recommended, following correction of dose for creatinine clearance, that no additional dose modification be made after routine hemodialysis or peritoneal dialysis.

It is not known whether lamivudine can be removed by continuous (24-hour) hemodialysis.

Pediatric Patients With Renal Impairment: The effect of renal impairment on lamivudine pharmacokinetics in pediatric patients with chronic hepatitis B is not known.

Patients With Hepatic Impairment: The pharmacokinetic properties of lamivudine in adults with hepatic impairment are shown in Table 6). Subjects were stratified by severity of hepatic impairment.

Table 6. Pharmacokinetic Parameters (Mean ± SD) Dose-Normalized to a Single 100-mg Dose of Lamivudine in Adults With Normal or Impaired Hepatic Function

| Parameter | Normal (n = 8) | Impairment ^a | |
|---------------------------|-------------------|-------------------------|-------------------|
| | | Moderate (n = 8) | Severe (n = 8) |
| C _{max} (mcg/mL) | 0.92 ± 0.31 | 1.06 ± 0.58 | 1.08 ± 0.27 |
| AUC (mcg.h/mL) | 3.96 ± 0.58 | 3.97 ± 1.36 | 4.30 ± 0.63 |

| | | | |
|--------------------------|--------------|---------------|--------------|
| T _{max} (h) | 1.3 ± 0.8 | 1.4 ± 0.8 | 1.4 ± 1.2 |
| Cl/F (mL/min) | 424.7 ± 61.9 | 456.9 ± 129.8 | 395.2 ± 51.8 |
| Cl _r (mL/min) | 279.2 ± 79.2 | 323.5 ± 100.9 | 216.1 ± 58.0 |

^a Hepatic impairment assessed by aminopyrine breath test.

Pharmacokinetic parameters were not altered by diminishing hepatic impairment. Therefore, no dose adjustment for lamivudine is required for patients with impaired hepatic function. Safety and efficacy of lamivudine tablets (HBV) have not been established in the presence of decompensated liver disease [see *Indications and Usage (1)*].

Patients Post-Hepatic Transplant: Fourteen HBV-infected adult subjects received liver transplant following lamivudine therapy and completed pharmacokinetic assessments at enrollment, 2 weeks after 100-mg once-daily dosing (pre-transplant), and 3 months following transplant; there were no significant differences in pharmacokinetic parameters. The overall exposure of lamivudine is primarily affected by renal impairment; consequently, transplant patients with renal impairment had generally higher exposure than patients with normal renal function. Safety and efficacy of lamivudine tablets (HBV) have not been established in this population [see *Indications and Usage (1)*].

Pregnant Women: The pharmacokinetics of lamivudine in patients with HBV or HIV-1 infection and in healthy volunteers were similar at similar doses. Lamivudine pharmacokinetics were studied in 36 pregnant women with HIV during 2 clinical trials conducted in South Africa (3 to 6 times the recommended daily dosage for HBV). Lamivudine pharmacokinetics in pregnant women were similar to those seen in non-pregnant adults and in postpartum women. Lamivudine concentrations were generally similar in maternal, neonatal, and umbilical cord serum samples.

Pediatric Patients: Lamivudine pharmacokinetics were evaluated in a 28-day dose-ranging trial in 53 pediatric subjects with chronic hepatitis B. Subjects aged 2 to 12 years were randomized to receive lamivudine 0.35 mg per kg twice daily, 3 mg per kg once daily, 1.5 mg per kg twice daily, or 4 mg per kg twice daily. Subjects aged 13 to 17 years received lamivudine 100 mg once daily. Lamivudine T_{max} was 0.5 to 1 hour. In general, both C_{max} and exposure (AUC) showed dose proportionality in the dosing range studied. Weight-corrected oral clearance was highest at age 2 and declined from 2 to 12 years, where values were then similar to those seen in adults. A dose of 3 mg per kg given once daily produced a steady-state lamivudine AUC (mean 5,953 ng•hour per mL ± 1,562 SD) similar to that associated with a dose of 100 mg per day in adults.

Geriatric Patients: The pharmacokinetics of lamivudine after administration of lamivudine tablets (HBV) to subjects over 65 years have not been studied [see *Use in Specific Populations (8.5)*].
Male and Female Patients: There are no significant or clinically relevant gender differences in lamivudine pharmacokinetics.

Racial Groups: There are no significant or clinically relevant racial differences in lamivudine pharmacokinetics.

Drug Interaction Studies

Effect of Lamivudine on the Pharmacokinetics of Other Agents: Based on in vitro study results, lamivudine at therapeutic drug exposures is not expected to affect the pharmacokinetics of drugs that are substrates of the following transporters: organic anion transporter polypeptide 1B1/3 (OATP1B1/3), breast cancer resistance protein (BCRP), P-glycoprotein (P-gp), multidrug and toxin extrusion protein 1 (MATE1), MATE2-K, organic cation transporter 1 (OCT1), OCT2 or OCT3.

Effect of Other Agents on the Pharmacokinetics of Lamivudine: Lamivudine is a substrate of MATE1, MATE2-K, and OCT2 in vitro. Trimethoprim (an inhibitor of these drug transporters) has been shown to increase lamivudine plasma concentrations. This interaction is not considered clinically significant, and no dose adjustment of lamivudine is needed.

Lamivudine is a substrate of P-gp and BCRP; however, considering its absolute bioavailability (87%), it is unlikely that these transporters play a significant role in the absorption of lamivudine. Therefore, coadministration of drugs that are inhibitors of these efflux transporters is unlikely to affect the disposition and elimination of lamivudine.

Interferon Alfa: There was no significant pharmacokinetic interaction between lamivudine and interferon alfa in a trial of 19 healthy male subjects.

Ribavirin: In vitro data indicate ribavirin reduces phosphorylation of lamivudine, stavudine, and zidovudine. However, no pharmacokinetic (e.g., plasma concentrations or intracellular triphosphorylated active metabolite concentrations) or pharmacodynamic (e.g., loss of HIV-1/HCV virologic suppression) interaction was observed when ribavirin and lamivudine (n = 18), stavudine (n = 10), or zidovudine (n = 6) were coadministered as part of a multi-drug regimen to HIV-1/HCV co-infected subjects.

Sorbitol (Excipient): Lamivudine and sorbitol solutions were coadministered to 16 healthy adult subjects in an open-label, randomized sequence, 4-period, crossover trial. Each subject received a single 300-mg dose of lamivudine oral solution alone or coadministered with a single dose of 3.2 grams, 10.2 grams, or 13.4 grams of sorbitol in solution. Coadministration of lamivudine with sorbitol resulted in dose-dependent decreases of 20%, 39%, and 44% in the AUC_(0 to 24), 14%, 32%, and 36% in the AUC_(∞), and 28%, 52%, and 55% in the C_{max} of lamivudine.

Trimethoprim/Sulfamethoxazole: Lamivudine and trimethoprim/sulfamethoxazole (TMP/SMX) were coadministered to 14 HIV-1-positive subjects in a single-center, open-label, randomized, crossover trial. Each subject received treatment with a single 300-mg dose of lamivudine and TMP 160 mg/SMX 800 mg once a day for 5 days with concomitant administration of lamivudine 300 mg with the fifth dose in a crossover design. Coadministration of TMP/SMX with lamivudine resulted in an increase of 43% ± 23% (mean ± SD) in lamivudine AUC_∞, a decrease of 29% ± 13% in lamivudine oral clearance, and a decrease of 30% ± 36% in lamivudine renal clearance. The pharmacokinetic properties of TMP and SMX were not altered by coadministration with lamivudine.

Zidovudine: No clinically significant alterations in lamivudine or zidovudine pharmacokinetics were observed in 12 asymptomatic HIV-1-infected adult subjects given a single dose of zidovudine (200 mg) in combination with multiple doses of lamivudine (300 mg every 12 hours).

12.4 Microbiology

Mechanism of Action

Lamivudine is a synthetic nucleoside analog. Intracellularly, lamivudine is phosphorylated to its active 5'-triphosphate metabolite, lamivudine triphosphate, 3TC-TP. The principal mode of action of 3TC-TP is the inhibition of the RNA- and DNA-dependent polymerase activities of HBV reverse transcriptase (rt) via DNA chain termination after incorporation of the nucleotide analog into viral DNA. 3TC-TP is a weak inhibitor of mammalian α , β , and γ -DNA polymerases.

Antiviral Activity

Activity of lamivudine against HBV in cell culture was assessed in HBV DNA-transfected 2.2.15 cells, HB611 cells, and infected human primary hepatocytes. EC₅₀ values (the concentration of drug needed to reduce the level of extracellular HBV DNA by 50%) varied

from 0.01 μM (2.3 ng per mL) to 5.6 μM (1.3 mcg per mL) depending upon the duration of exposure of cells to lamivudine, the cell model system, and the protocol used. See the EPIVIR prescribing information for information regarding activity of lamivudine against HIV.

Resistance

Lamivudine-resistant isolates were identified in subjects with virologic breakthrough, defined when using solution hybridization assay as the detection of HBV DNA in serum on 2 or more occasions after failing to detect HBV DNA on 2 or more occasions and defined when using PCR assay as a greater than 1 log₁₀ (10-fold) increase in serum HBV DNA from nadir during treatment in a subject who had an initial virologic response.

Lamivudine-resistant HBV isolates develop rtM204V/I substitutions in the YMDD motif of the catalytic domain of the viral reverse transcriptase. rtM204V/I substitutions are frequently accompanied by other substitutions (rtV173L, rtL180M) which enhance the level of lamivudine resistance or act as compensatory substitutions improving replication efficiency. Other substitutions detected in lamivudine-resistant HBV isolates include rtL80I and rtA181T.

In 4 controlled clinical trials in adults with HBeAg-positive chronic hepatitis B virus infection (CHB), YMDD-mutant HBV was detected in 81 of 335 subjects receiving lamivudine tablets (HBV) 100 mg once daily for 52 weeks. The prevalence of YMDD substitutions was less than 10% in each of these trials for subjects studied at 24 weeks and increased to an average of 24% (range in 4 trials: 16% to 32%) at 52 weeks. In limited data from a long-term follow-up trial in subjects who continued 100 mg per day lamivudine tablets (HBV) after one of these trials, YMDD substitutions further increased from 18% (10 of 57) at 1 year to 41% (20 of 49), 53% (27 of 51), and 69% (31 of 45) at years 2, 3, and 4 of treatment, respectively. Over the 5-year treatment period, the proportion of subjects who developed YMDD-mutant HBV at any time was 69% (40 of 58).

In a controlled trial, treatment-naïve subjects with HBeAg-positive CHB were treated with lamivudine tablets (HBV) or lamivudine tablets (HBV) plus adefovir dipivoxil combination therapy. Following 104 weeks of therapy, YMDD-mutant HBV was detected in 7 of 40 (18%) subjects receiving combination therapy compared with 15 of 35 (43%) subjects receiving therapy with only lamivudine tablets (HBV). In another controlled trial, combination therapy was evaluated in adult subjects with HBeAg-positive CHB who had YMDD-mutant HBV and diminished clinical and virologic response to lamivudine tablets (HBV). Following 52 weeks of lamivudine tablets (HBV) plus adefovir dipivoxil combination therapy (n = 46) or therapy with only lamivudine tablets (HBV) (n = 49), YMDD-mutant HBV was detected less frequently in subjects receiving combination therapy, 62% versus 96%.

A published trial suggested that the rates of lamivudine resistance in subjects treated for HBeAg-negative CHB appear to be more variable (0% to 27% at 1 year and 10% to 56% at 2 years).

Pediatric Subjects: In a controlled trial in pediatric subjects, YMDD-mutant HBV was detected in 31 of 166 (19%) subjects receiving lamivudine tablets (HBV) for 52 weeks. For a subgroup that remained on therapy with lamivudine tablets (HBV) in a follow-up trial, YMDD substitutions increased from 24% (29 of 121) at 12 months to 59% (68 of 115) at 24 months and 64% (66 of 103) at 36 months of treatment with lamivudine tablets (HBV).

Cross-Resistance: HBV containing lamivudine resistance-associated substitutions (rtL180M, rtM204I, rtM204V, rtL180M and rtM204V, rtV173L and rtL180M and rtM204V) retain susceptibility to adefovir dipivoxil but have reduced susceptibility to entecavir (30 fold) and telbivudine (greater than 100 fold). The lamivudine resistance-associated substitution rtA181T results in diminished response to adefovir and telbivudine. Similarly, HBV with entecavir resistance-associated substitutions (I169T/M250V and T184G/S202I) have greater than 1,000-fold reductions in susceptibility to lamivudine.

13 NONCLINICAL TOXICOLOGY

13.1 Carcinogenesis & Mutagenesis & Impairment Of Fertility

Carcinogenesis

Long-term carcinogenicity studies with lamivudine in mice and rats showed no evidence of carcinogenic potential at exposures up to 34 times (mice), and 113 and 187 times (male and female rats, respectively) those observed in humans at the recommended therapeutic dose for chronic hepatitis B.

Mutagenesis

Lamivudine was mutagenic in an L5178Y mouse lymphoma assay and clastogenic in a cytogenetic assay using cultured human lymphocytes. Lamivudine was not mutagenic in a microbial mutagenicity assay, in an in vitro cell transformation assay in a rat micronucleus test, in a rat bone marrow cytogenetic assay, and in an assay for unscheduled DNA synthesis in rat liver.

Impairment of Fertility

Lamivudine did not affect male or female fertility in rats at oral doses up to 4,000 mg per kg per day, associated with concentrations approximately 70 times (male) or 104 times (females) higher than the concentrations (C_{max}) in humans at the dose of 100 mg [see Use in Specific Populations (8.1)].

13.2 Animal Pharmacology & OR Toxicology

14 CLINICAL STUDIES

14.1 Clinical Studies of Lamivudine Tablets (HBV) in Adult Patients

The safety and efficacy of lamivudine tablets (HBV) 100 mg once daily versus placebo were evaluated in 3 controlled trials in subjects with compensated chronic hepatitis B virus infection. All subjects were aged 16 years or older and had chronic hepatitis B virus infection (serum HBsAg-positive for at least 6 months) accompanied by evidence of HBV replication (serum HBeAg-positive and positive for serum HBV DNA) and persistently elevated ALT levels and/or chronic inflammation on liver biopsy compatible with a diagnosis of chronic viral hepatitis. The results of these trials are summarized below.

- Trial 1 was a randomized, double-blind trial of lamivudine tablets (HBV) 100 mg once daily versus placebo for 52 weeks followed by a 16-week no-treatment period in 141 treatment-naïve US subjects.
- Trial 2 was a randomized, double-blind, 3-arm trial that compared lamivudine tablets (HBV) 25 mg once daily versus lamivudine tablets (HBV) 100 mg once daily versus placebo for 52 weeks in 358 Asian subjects.
- Trial 3 was a randomized, partially -blind trial conducted primarily in North America and Europe in 238 subjects who had ongoing evidence of active chronic hepatitis B despite previous treatment with interferon alpha. The trial compared lamivudine tablets (HBV) 100 mg once daily for 52 weeks, followed by either lamivudine tablets (HBV) 100 mg or matching placebo once daily for 16 weeks (Arm 1), versus placebo once daily for 68 weeks (Arm 2).

Principal endpoint comparisons for the histologic and serologic outcomes in subjects receiving lamivudine tablets (HBV) (100 mg daily) or placebo in these trials are shown in the following tables.

Table 7. Histologic Response at Week 52 among Adult Subjects Receiving Lamivudine Tablets (HBV) 100 mg Once Daily or Placebo

| | Trial 1 | | Trial 2 | | Trial 3 | |
|-----------------------|-----------------------------------|------------------|------------------------------------|------------------|------------------------------------|------------------|
| | Lamivudine Tablets (HBV) (n = 62) | Placebo (n = 63) | Lamivudine Tablets (HBV) (n = 131) | Placebo (n = 68) | Lamivudine Tablets (HBV) (n = 110) | Placebo (n = 54) |
| Assessment | | | | | | |
| Improved ^a | 55% | 25% | 56% | 26% | 56% | 26% |
| No Improvement | 27% | 59% | 36% | 62% | 25% | 54% |
| Missing Data | 18% | 16% | 8% | 12% | 19% | 20% |

^a Improvement was defined as a greater than or equal to 2-point decrease in the Knodell Histologic Activity Index (HAI) at Week 52 compared with pretreatment HAI. Subjects with missing data at baseline were excluded.

Table 8. HB eAg Seroconverters^a at Week 52 among Adult Subjects Receiving Lamivudine Tablets (HBV) 100 mg Once Daily or Placebo

| | T rial 1 | | T rial 2 | | T rial 3 | |
|----------------|-----------------------------------|------------------|------------------------------------|------------------|------------------------------------|------------------|
| | Lamivudine Tablets (HBV) (n = 63) | Placebo (n = 69) | Lamivudine Tablets (HBV) (n = 140) | Placebo (n = 70) | Lamivudine Tablets (HBV) (n = 108) | Placebo (n = 53) |
| Seroconverters | 17% | 6% | 16% | 4% | 15% | 13% |

^a Three-component seroconversion was defined as Week 52 values showing loss of HBeAg, gain of HB eAb, and reduction of HBV DNA to below the solution-hybridization assay limit. Subjects with negative baseline HBeAg or HBV DNA assay were excluded from the analysis.

Normalization of serum ALT levels was more frequent with treatment of lamivudine tablets (HBV) compared with placebo in Trials 1, 2, and 3.

The majority of subjects treated with lamivudine tablets (HBV) showed a decrease of HBV DNA to below the assay limit early in the course of the study. However, reapppearance of assay-detectable HBV DNA during treatment with lamivudine tablets (HBV) was observed in approximately one-third of subjects after this initial response.

14.2 Clinical Studies of Lamivudine Tablets (HBV) in Pediatric Subjects

The safety and efficacy of lamivudine tablets (HBV) were evaluated in a double-blind clinical trial in 286 subjects aged from 2 to 17 years, who were randomized (2:1) to receive 52 weeks of lamivudine tablets (HBV) (3 mg per kg once daily to a maximum of 100 mg once daily) or placebo. All subjects had compensated chronic hepatitis B accompanied by evidence of hepatitis B virus replication (positive serum HBeAg and positive for serum HBV DNA by a research branch end-chronic DNA assay) and persistently elevated serum ALT levels. The combination of loss of HBeAg and reduction of HBV DNA to below the assay limit of the research assay, evaluated at Week 52, was observed in 23% of subjects treated with lamivudine tablets (HBV) and 13% of placebo-treated subjects. Normalization of serum ALT was achieved and maintained to Week 52 more frequently in subjects treated with lamivudine tablets (HBV) compared with placebo (55% versus 13%). As in the adult controlled trials, most subjects treated with lamivudine tablets (HBV) had decreases in HBV DNA below the assay limit early in treatment, but about one-third of subjects with this initial response had reappearance of assay-detectable HBV DNA during treatment. Adolescents (aged 13 to 17 years) showed less evidence of treatment effect than younger pediatric subjects.

16 HOW SUPPLIED/STORAGE AND HANDLING

Lamivudine tablets (HBV), 100 mg are pink colored, capsule shaped, biconvex, film coated tablets, debossed with '37' on one side and 'I' on the other side.

| | |
|---|-------------------|
| Bottle of 60 tablets | NDC 31722--752-60 |
| Bottle of 600 tablets | NDC 31722--752-06 |
| Blister card of 10 Unit-dose tablets | NDC 31722--752-31 |
| Blister pack of 100 (10x10) Unit-dose tablets | NDC 31722--752-32 |

Store at 20° to 25°C (68° to 77°F) [see USP Controlled Room Temperature]. Preserve in well-closed, light-resistant containers.

17 PATIENT COUNSELING INFORMATION

Advise the patient to read the FDA-approved patient labeling (Patient Information).

Lactic Acidosis and Severe Hepatomegaly with Steatosis

Advise patients that lactic acidosis and severe hepatomegaly with steatosis, including fatal cases, have been reported with use of lamivudine tablets (HBV). Advise patients to contact their healthcare provider immediately and stop lamivudine tablets (HBV) if they develop clinical symptoms suggestive of lactic acidosis or pronounced hepatotoxicity [see *Warnings and Precautions (5.1)*].

Severe Acute Exacerbation of Hepatitis after Discontinuation of Treatment

Inform patients that discontinuation of anti-hepatitis B therapy, including lamivudine tablets (HBV), may result in severe acute exacerbations of hepatitis B including decompensation of liver disease. Advise patients not to discontinue lamivudine tablets (HBV) without first informing their healthcare provider [see *Warnings and Precautions (5.2)*].

Risk of Development of HIV-1 Resistance in Patients with HIV-1 Co-infection

Counsel patients on the importance of testing for HIV to avoid inappropriate therapy and development of resistance to HIV. HIV counseling and testing should be offered before starting lamivudine tablets (HBV) and periodically during therapy. Inform patients that if they have or develop HIV infection and are not receiving effective HIV treatment, lamivudine tablets (HBV) may increase the risk of development of resistance to HIV medications. Advise patients that lamivudine tablets (HBV) contains a lower dose of the same active ingredient (lamivudine) as HIV drugs containing lamivudine [see *Dosage and Administration (2.1)*, *Warnings and Precautions (5.3)*].

Emergence of HBV Resistance

Inform patients that emergence of resistant hepatitis B virus and worsening of disease can occur during treatment. Patients should promptly report any new or worsening symptoms to their physician [see *Warnings and Precautions (5.4)*].

Hepatitis B Transmission

Advise patients that treatment with lamivudine tablets (HBV) has not been shown to reduce the risk of transmission of HBV to others through sexual contact or blood contamination.

Drug Interactions

Inform patients that lamivudine tablets (HBV) may interact with some drugs; therefore, patients should be advised to report to their healthcare provider the use of any prescription, non-prescription medication or herbal products. Advise patients to avoid chronic use of sorbitol-containing prescription and over-the-counter medicines when possible. Taking lamivudine tablets (HBV) with chronically administered sorbitol-containing medicines may decrease the concentrations of lamivudine [see *Drug Interactions (7.2)*].

Pregnancy Registry

Advise patients that there is a pregnancy exposure registry that monitors pregnancy outcomes in women exposed to lamivudine tablets (HBV) during pregnancy [see *Use in Specific Populations (8.1)*].

Missed Dosage

Instruct patients that if they miss a dose of lamivudine tablets (HBV), to take it as soon as they remember. Advise patients not to double their next dose or take more than the prescribed dose [see *Dosage and Administration (2)*].

All brands listed are trademarks of their respective owners and are not trademarks of Hetero Labs Limited. The makers of these brands are not affiliated with and do not endorse Hetero Labs Limited or its products.

Manufactured for:



Camber Pharmaceuticals, Inc.,
Piscataway, NJ 08854

By: HETERO™

Hetero Labs Limited

Unit V, Polepally,

Jadcherla, Mahabubnagar-509 301, India.

Revised: December 2017

PATIENT INFORMATION

PHARMACIST-DETACH HERE AND GIVE INSTRUCTIONS TO PATIENTS

PATIENT INFORMATION

(la miv' ue deen)

What is the most important information I should know about lamivudine tablets (HBV)?

Lamivudine tablets (HBV) can cause serious side effects, including:

• **Build-up of lactic acid in your blood (lactic acidosis).** Lactic acidosis can happen in some people who take lamivudine tablets (HBV). Lactic acidosis is a serious medical emergency that can lead to death. **Call your healthcare provider right away if you get any of the following symptoms that could be signs of lactic acidosis:**

- feel very weak or tired
- feel cold, especially in your arms and legs
- unusual (not normal) muscle pain
- feel dizzy or light-headed
- trouble breathing
- have a fast or irregular heartbeat
- stomach pain with nausea and vomiting
- Severe liver problems. Severe liver problems can happen in people who take lamivudine tablets (HBV) or similar medicines. In some cases these liver problems can lead to death. Your liver may

become large (hepatomegaly) and you may develop fat in your liver (steatosis) when you take lamivudine tablets (HBV). **Call your healthcare provider right away if you get any of the following signs or symptoms of liver problems:**

- your skin or the white part of your eyes turns yellow (jaundice)
- loss of appetite for several days or longer
- dark or “tea-colored” urine
- nausea
- light-colored stools (bowel movements)
- pain, aching, or tenderness on the right side of your stomach area

You may be more likely to get lactic acidosis or severe liver problems if you are female, very overweight (obese), or have been taking nucleoside analogue medicines for a long time.

- **Worsening liver disease.** Your hepatitis B infection may become worse after stopping treatment with lamivudine tablets (HBV). Worsening liver disease can be serious and may lead to death. If you stop treatment with lamivudine tablets (HBV), your healthcare provider will need to check your health and do blood tests to check your liver for at least several months after you stop taking lamivudine tablets (HBV).

- **Risk of HIV-1 resistance in people with unknown HIV-1 infection or in people with untreated HIV-1 infection.** If you have or get HIV-1 (Human Immunodeficiency Virus type 1) that is not being treated with medicines while taking lamivudine tablets HBV, the HIV-1 virus may develop resistance to certain HIV-1 medicines and become harder to treat.

Your healthcare provider should offer you counseling and testing for HIV-1 infection before you start treatment for hepatitis B with lamivudine tablets (HBV) and during treatment.

Lamivudine tablets (HBV) contain a lower dose of lamivudine than other medicines that contain lamivudine and are used to treat HIV-1 infection.

- **Resistant Hepatitis B Virus (HBV).** The hepatitis B virus can change (mutate) during your treatment with lamivudine tablets (HBV) and become harder to treat (resistant). If this happens, your liver disease can become worse and may lead to death. Tell your healthcare provider right away if you have any new symptoms.

What are lamivudine tablets (HBV)?

Lamivudine tablet (HBV) is a prescription medicine used to treat long-term (chronic) hepatitis B virus (HBV) when the disease is progressing and there is liver swelling (inflammation).

It is not known if lamivudine tablets (HBV) is safe and effective in:

- people with chronic HBV who have a severely damaged liver that is unable to work properly (decompensated liver disease)
- people with HIV-1, hepatitis C virus or hepatitis D (delta) virus
- people who have had a liver transplant
- children with chronic HBV less than 2 years of age

Lamivudine tablets (HBV) does not stop you from spreading HBV to others by sex, sharing needles, or being exposed to your blood. Avoid doing things that can spread HBV infection to others.

Who should not take lamivudine tablets (HBV)?

Do not take lamivudine tablets (HBV) if you are allergic to lamivudine or any of the ingredients in lamivudine tablets (HBV). See the end of this Patient Information leaflet for a complete list of ingredients in lamivudine tablets (HBV).

What should I tell my healthcare provider before taking lamivudine tablets (HBV)?

Before taking lamivudine tablets (HBV), tell your healthcare provider about all of your medical conditions, including if you:

- have HIV-1 infection
- have kidney problems
- are pregnant or plan to become pregnant. It is not known if lamivudine tablets (HBV) will harm your unborn baby.

Pregnancy Registry. There is a pregnancy registry for women who take antiviral medicines during pregnancy. The purpose of this registry is to collect information about the health of you and your baby. Talk to your healthcare provider about how you can take part in this registry.

- are breastfeeding or plan to breastfeed. Lamivudine can pass into your breast milk and may harm your baby. You and your healthcare provider should decide if you will take lamivudine tablets (HBV) or breastfeed.

Tell your healthcare provider about all the medicines you take, including prescription and over-the-counter medicines, vitamins, and herbal supplements. Some medicines interact with lamivudine tablets (HBV). **Keep a list of your medicines to show your healthcare provider and pharmacist.**

- You can ask your healthcare provider or pharmacist for a list of medicines that interact with lamivudine tablets (HBV).
- **Do not start taking a new medicine without telling your healthcare provider.** Your healthcare provider can tell you if it is safe to take lamivudine tablets (HBV) with other medicines.

Lamivudine tablets (HBV) should not be taken if you also take other medicines that contain lamivudine or emtricitabine.

How should I take lamivudine tablets (HBV)?

- Take lamivudine tablets (HBV) exactly as your healthcare provider tells you to take it.
- If you miss a dose of lamivudine tablets (HBV), take it as soon as you remember. Do not take 2 doses at the same time or take more than what your healthcare provider tells you to take.
- Stay under the care of a healthcare provider during treatment with lamivudine tablets (HBV).
- Lamivudine tablets (HBV) may be taken with or without food.
- Your healthcare provider may prescribe a lower dose if you have problems with your kidneys.
- For children 2 to 17 years of age, your healthcare provider will prescribe a dose of lamivudine tablets (HBV) based on your child's body weight.
- Tell your healthcare provider if you or your child has trouble swallowing tablets.
- If you take too much lamivudine tablets (HBV), call your healthcare provider or go to the nearest hospital emergency room right away.

What are the possible side effects of lamivudine tablets (HBV)?

Lamivudine tablets (HBV) may cause serious side effects, including:

- See "**What is the most important information I should know about lamivudine tablets (HBV)?**"

The most common side effects of lamivudine tablets (HBV) include ear, nose, and throat infections; sore throat; and diarrhea

Tell your healthcare provider if you have any side effect that bothers you or that does not go away.

These are not all the possible side effects of lamivudine tablets (HBV). Call your doctor for medical advice about side effects. You may report side effects to FDA at 1-800-FDA-1088.

How should I store lamivudine tablets (HBV)?

- Store lamivudine tablets (HBV) at room temperature between 68°F to 77°F (20°C to 25°C).

Keep lamivudine tablets (HBV) and all medicines out of the reach of children.

General information about the safe and effective use of lamivudine tablets (HBV)

Medicines are sometimes prescribed for purposes other than those listed in a Patient Information leaflet. Do not use lamivudine tablets (HBV) for a condition for which it was not prescribed. Do not give lamivudine tablets (HBV) to other people, even if they have the same symptoms that you have. It may harm them. You can ask your pharmacist or healthcare provider for information about lamivudine tablets (HBV) that is written for health professionals.

What are the ingredients in lamivudine tablets (HBV)?

Active ingredient: lamivudine, USP

Inactive ingredients: crosopvidone, isomalt, isopropyl alcohol, magnesium stearate and methylene chloride. The tablets are coated with Opadry Pink containing hypromellose, iron oxide red, polyethylene glycol, polysorbate 80, titanium dioxide and yellow iron oxide.

All brands listed are trademarks of their respective owners and are not trademarks of Hetero Labs Limited. The makers of these brands are not affiliated with and do not endorse Hetero Labs Limited or its products.

This Patient Information has been approved by the U.S. Food and Drug Administration.

Manufactured for:



Camber Pharmaceuticals, Inc.,

Piscataway, NJ 08854

By: HETERO™

Hetero Labs Limited

Unit V, Polepally,

Jadcherla, Mahabubnagar-509 301, India.

Revised: December 2017

PACKAGE LABEL. PRINCIPAL DISPLAY PANEL

Lamivudine Tablets (HBV) 100 mg 600 count- Container Label

CAMBER™
PHARMACEUTICALS, INC.

NDC 31722-752-06

**Lamivudine
Tablets (HBV)**

100 mg

Rx Only 600 Tablets

PHARMACIST: Dispense the Patient Information Leaflet provided separately to each patient.

Each film coated tablet contains 100 mg of lamivudine USP.

USUAL DOSAGE: See prescribing information for Dosage and Administration.

Store at 20° to 25°C (68° to 77°F) [see USP Controlled Room Temperature].

Do not use if printed safety seal under cap is broken or missing.

U.S. Contact Number: 1-866-495-1995

Manufactured for:
Camber Pharmaceuticals, Inc.
Piscataway, NJ 08854

By: **HETERO™**
Hetero Labs Limited, Unit V, Polepally,
Jadcherla, Mahaboob Nagar - 509 301, India.

Mfg. Lic. No.:
50/MN/AP/2009/F/R
2042030

UNVARNISH AREA
FOR BATCH CODING

Lamivudine Tablets (HBV) 100 mg 60 count- Container Label

CAMBER™
PHARMACEUTICALS, INC.

NDC 31722-752-60

**Lamivudine
Tablets (HBV)**

100 mg

Rx Only 60 Tablets

PHARMACIST: Dispense the Patient Information Leaflet provided separately to each patient.

Each film coated tablet contains 100 mg of lamivudine USP.

USUAL DOSAGE: See prescribing information for Dosage and Administration.

Store at 20° to 25°C (68° to 77°F) [see USP Controlled Room Temperature].

Do not use if printed safety seal under cap is broken or missing.

U.S. Contact Number: 1-866-495-1995

Manufactured for:
Camber Pharmaceuticals, Inc.
Piscataway, NJ 08854

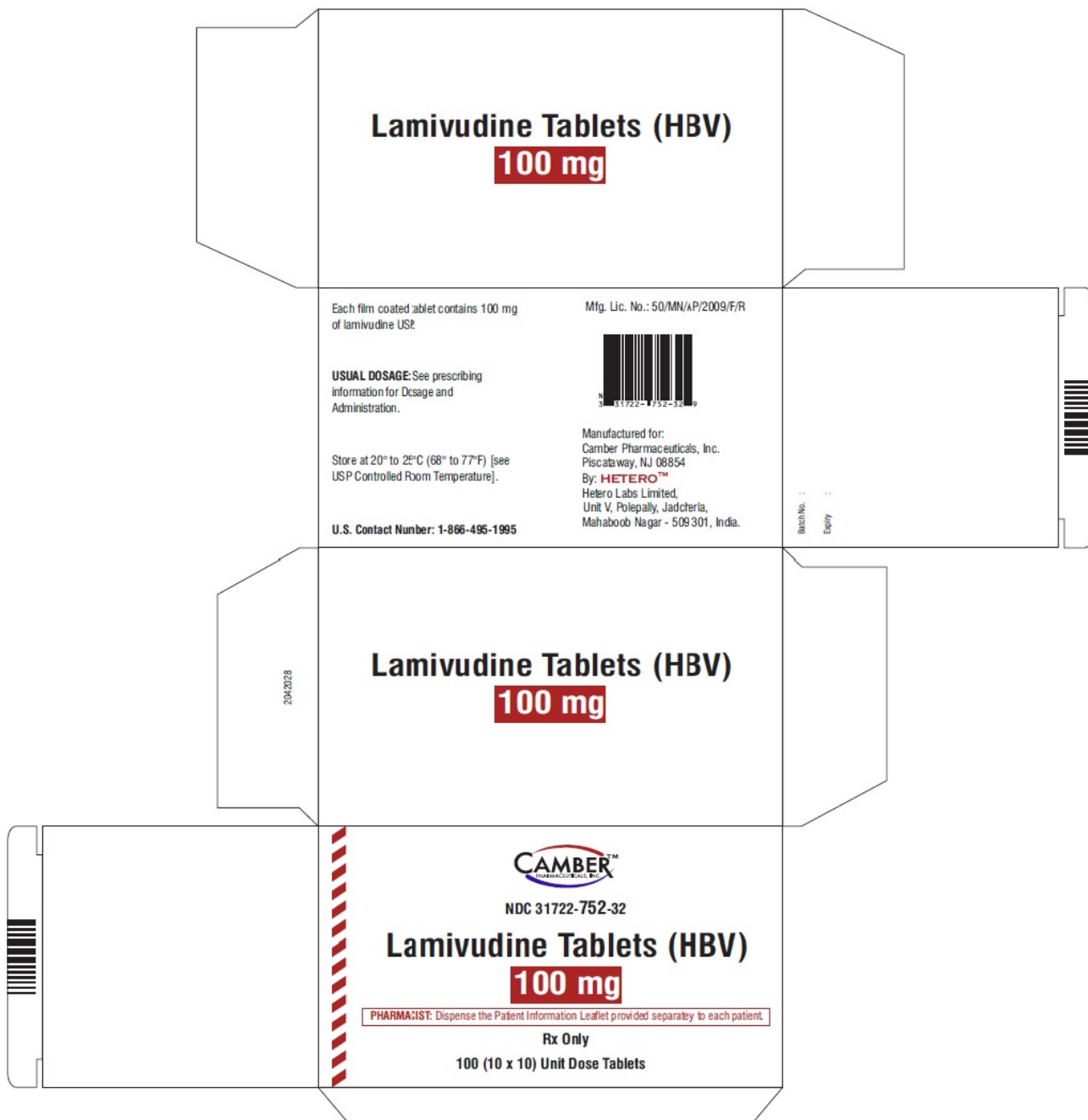
By: **HETERO™**
Hetero Labs Limited, Unit V, Polepally,
Jadcherla, Mahaboob Nagar - 509 301, India.

Mfg. Lic. No.: 50/MN/AP/2009/F/R

2042030

UNVARNISH AREA
FOR BATCH CODING

Lamivudine Tablets (HBV) 100 mg - Blister Carton



Lamivudine Tablets (HBV) 100 mg - Blister Foil



LAMIVUDINE

lamivudine tablet, film coated

Product Information

| | | | |
|--------------------------------|-------------------------|---------------------------|---------------|
| Product Type | HUMAN PRESCRIPTION DRUG | Item Code (Source) | NDC:31722-752 |
| Route of Administration | ORAL | | |

Active Ingredient/Active Moiety

| Ingredient Name | Basis of Strength | Strength |
|--|-------------------|----------|
| LAMIVUDINE (UNII: 2T8Q726O95) (LAMIVUDINE - UNII:2T8Q726O95) | LAMIVUDINE | 100 mg |

Inactive Ingredients

| Ingredient Name | Strength |
|---|----------|
| CROSPOLYMER (UNII: 68401960MK) | |
| ISOMALT (UNII: S870P55O2W) | |
| ISOPROPYL ALCOHOL (UNII: ND2M416302) | |
| MAGNESIUM STEARATE (UNII: 70097M6I30) | |
| METHYLENE CHLORIDE (UNII: 588X2YUY0A) | |
| HYPROMELLOSES (UNII: 3NXW29V3WO) | |
| FERRIC OXIDE RED (UNII: 1K09F3G675) | |
| POLYETHYLENE GLYCOL, UNSPECIFIED (UNII: 3WJQ0SDW1A) | |
| POLYSORBATE 80 (UNII: 6OZP39ZG8H) | |
| TITANIUM DIOXIDE (UNII: 15FIX9V2JP) | |
| FERRIC OXIDE YELLOW (UNII: EX438O2MRT) | |

Product Characteristics

| | | | |
|--------------|------|--------------|----------|
| Color | PINK | Score | no score |
|--------------|------|--------------|----------|

| | | | |
|-----------------|--------------------|---------------------|------|
| Shape | CAPSULE (biconvex) | Size | 12mm |
| Flavor | | Imprint Code | 37;I |
| Contains | | | |

Packaging

| # | Item Code | Package Description | Marketing Start Date | Marketing End Date |
|---|------------------|---|----------------------|--------------------|
| 1 | NDC:31722-752-60 | 60 in 1 BOTTLE; Type 0: Not a Combination Product | 01/02/2014 | |
| 2 | NDC:31722-752-06 | 600 in 1 BOTTLE; Type 0: Not a Combination Product | 01/02/2014 | |
| 3 | NDC:31722-752-31 | 10 in 1 BLISTER PACK; Type 0: Not a Combination Product | 01/02/2014 | |
| 4 | NDC:31722-752-32 | 100 in 1 CARTON; Type 0: Not a Combination Product | 01/02/2014 | |

Marketing Information

| Marketing Category | Application Number or Monograph Citation | Marketing Start Date | Marketing End Date |
|--------------------|--|----------------------|--------------------|
| ANDA | ANDA203260 | 01/02/2014 | |

Labeler - Camber Pharmaceuticals, Inc. (826774775)

Registrant - Hetero Labs Limited Unit V (650452530)

Establishment

| Name | Address | ID/FEI | Business Operations |
|----------------------------|---------|-----------|--|
| Hetero Labs Limited Unit V | | 650452530 | ANALYSIS(31722-752) , MANUFACTURE(31722-752) |

Revised: 12/2019

Camber Pharmaceuticals, Inc.