

# **ANAGRELIDE HYDROCHLORIDE- anagrelide hydrochloride capsule**

## **Teva Pharmaceuticals USA, Inc.**

-----

### **HIGHLIGHTS OF PRESCRIBING INFORMATION**

**These highlights do not include all the information needed to use ANAGRELIDE CAPSULES safely and effectively. See full prescribing information for ANAGRELIDE CAPSULES.**

**ANAGRELIDE capsules, for oral use**  
**Initial U.S. Approval: 1997**

### **INDICATIONS AND USAGE**

Anagrelide is a platelet reducing agent indicated for the treatment of thrombocythemia, secondary to myeloproliferative neoplasms, to reduce the elevated platelet count and the risk of thrombosis and to ameliorate associated symptoms including thrombo-hemorrhagic events. (1)

### **DOSAGE AND ADMINISTRATION**

- The starting dose for adults is 0.5 mg four times a day or 1 mg twice a day. (2.1)
- The starting dose for pediatric patients is 0.5 mg per day. (2.1)
- Maintain the starting dose for at least one week and then titrate to maintain target platelet counts. (2.2)
- Do not exceed a dose increment of 0.5 mg/day in any one week. Do not exceed 10 mg/day or 2.5 mg in a single dose. (2.2)
- Moderate hepatic impairment: Start with 0.5 mg per day. (2.3)

### **DOSAGE FORMS AND STRENGTHS**

Capsules: 0.5 mg and 1 mg. (3)

### **CONTRAINDICATIONS**

None. (4)

### **WARNINGS AND PRECAUTIONS**

- **Cardiovascular Toxicity:** QT prolongation and ventricular tachycardia have been reported with anagrelide. Obtain a pre-treatment cardiovascular examination including an ECG in all patients. Monitor patients for cardiovascular effects. (5.1)
- **Pulmonary Hypertension:** Assess underlying cardiopulmonary disease prior to initiating therapy. (5.2)
- **Bleeding Risk:** Monitor patients for bleeding, including those receiving concomitant therapy with other drugs known to cause bleeding. (5.3)

### **ADVERSE REACTIONS**

The most common adverse reactions (incidence  $\geq$  5%) are headache, palpitations, diarrhea, asthenia, edema, nausea, abdominal pain, dizziness, pain, dyspnea, cough, flatulence, vomiting, fever, peripheral edema, rash, chest pain, anorexia, tachycardia, malaise, paresthesia, back pain, pruritus, and dyspepsia. (6.1)

**To report SUSPECTED ADVERSE REACTIONS, contact Teva at 1-888-838-2872 or FDA at 1-800-FDA-1088 or [www.fda.gov/medwatch](http://www.fda.gov/medwatch).**

### **DRUG INTERACTIONS**

- *Other PDE3 inhibitors:* Exacerbation of inotropic effects. (7.2)
- *Aspirin and Drugs that Increase Bleeding Risk:* Increased risk of bleeding with concomitant use. (7.3)

### **USE IN SPECIFIC POPULATIONS**

*Lactation:* Advise not to breastfeed. (8.2)

**See 17 for PATIENT COUNSELING INFORMATION.**

**Revised: 5/2022**

---

**FULL PRESCRIBING INFORMATION: CONTENTS\***

## **1 INDICATIONS AND USAGE**

## **2 DOSAGE AND ADMINISTRATION**

- 2.1 Recommended Starting Dosage
- 2.2 Dose Titration Based Upon Platelet Response
- 2.3 Dose Modifications for Hepatic Impairment
- 2.4 Clinical Monitoring

## **3 DOSAGE FORMS AND STRENGTHS**

## **4 CONTRAINDICATIONS**

## **5 WARNINGS AND PRECAUTIONS**

- 5.1 Cardiovascular Toxicity
- 5.2 Pulmonary Hypertension
- 5.3 Bleeding Risk
- 5.4 Pulmonary Toxicity

## **6 ADVERSE REACTIONS**

- 6.1 Clinical Trials Experience
- 6.2 Postmarketing Experience

## **7 DRUG INTERACTIONS**

- 7.1 Drugs that Prolong QT
- 7.2 PDE3 Inhibitors
- 7.3 Aspirin and Drugs that Increase Bleeding Risk
- 7.4 CYP450 Interactions

## **8 USE IN SPECIFIC POPULATIONS**

- 8.1 Pregnancy
- 8.2 Lactation
- 8.3 Females and Males of Reproductive Potential
- 8.4 Pediatric Use
- 8.5 Geriatric Use
- 8.6 Hepatic Impairment

## **10 OVERDOSAGE**

## **11 DESCRIPTION**

## **12 CLINICAL PHARMACOLOGY**

- 12.1 Mechanism of Action
- 12.2 Pharmacodynamics
- 12.3 Pharmacokinetics

## **13 NONCLINICAL TOXICOLOGY**

- 13.1 Carcinogenesis, Mutagenesis, Impairment of Fertility
- 13.2 Animal Toxicology and/or Pharmacology

## **14 CLINICAL STUDIES**

## **16 HOW SUPPLIED/STORAGE AND HANDLING**

## **17 PATIENT COUNSELING INFORMATION**

\* Sections or subsections omitted from the full prescribing information are not listed.

---

## **FULL PRESCRIBING INFORMATION**

### **1 INDICATIONS AND USAGE**

Anagrelide capsules are indicated for the treatment of patients with thrombocythemia, secondary to myeloproliferative neoplasms, to reduce the elevated platelet count and the risk of thrombosis and to ameliorate associated symptoms including thrombohemorrhagic events.

## **2 DOSAGE AND ADMINISTRATION**

### **2.1 Recommended Starting Dosage**

Adults: The recommended starting dosage of anagrelide capsules is 0.5 mg four times daily or 1 mg twice daily.

Pediatric Patients: The recommended starting dosage of anagrelide capsules is 0.5 mg daily.

### **2.2 Dose Titration Based Upon Platelet Response**

Continue the starting dose for at least one week and then titrate to reduce and maintain the platelet count below 600,000/ $\mu$ L, and ideally between 150,000/ $\mu$ L and 400,000/ $\mu$ L. The dose increment should not exceed 0.5 mg/day in any one week. Dosage should not exceed 10 mg/day or 2.5 mg in a single dose. Most patients will experience an adequate response at a dose of 1.5 to 3 mg/day. Monitor platelet counts weekly during titration then monthly or as necessary.

### **2.3 Dose Modifications for Hepatic Impairment**

In patients with moderate hepatic impairment (Child Pugh score 7 to 9) start anagrelide capsules therapy at a dose of 0.5 mg/day and monitor frequently for cardiovascular events [see *Warnings and Precautions (5.1)*, *Use in Specific Populations (8.6)* and *Clinical Pharmacology (12.3)*]. Patients with moderate hepatic impairment who have tolerated anagrelide capsules therapy for one week may have their dose increased. The dose increase increment should not exceed 0.5 mg/day in any one week. Avoid use of anagrelide capsules in patients with severe hepatic impairment.

### **2.4 Clinical Monitoring**

Anagrelide capsules therapy requires clinical monitoring, including complete blood counts, assessment of hepatic and renal function, and electrolytes.

To prevent the occurrence of thrombocytopenia, monitor platelet counts every two days during the first week of treatment and at least weekly thereafter until the maintenance dosage is reached. Typically, platelet counts begin to respond within 7 to 14 days at the proper dosage. In the clinical trials, the time to complete response, defined as platelet count  $\leq$ 600,000/ $\mu$ L, ranged from 4 to 12 weeks. In the event of dosage interruption or treatment withdrawal, the rebound in platelet count is variable, but platelet counts typically will start to rise within 4 days and return to baseline levels in one to two weeks, possibly rebounding above baseline values. Monitor platelet counts frequently.

## **3 DOSAGE FORMS AND STRENGTHS**

Anagrelide Capsules USP, 0.5 mg are available as light gray opaque cap/white opaque body hard gelatin capsules, spin printed in black ink "Ivax hourglass logo" "5241" on the

cap and “0.5 mg” on the body containing 0.5 mg of anagrelide base (as anagrelide hydrochloride).

Anagrelide Capsules USP, 1 mg are available as white opaque hard gelatin capsules, spin printed in black ink “Ivax hourglass logo” “5240” on the cap and “1 mg” on the body containing 1 mg of anagrelide base (as anagrelide hydrochloride).

## **4 CONTRAINDICATIONS**

None.

## **5 WARNINGS AND PRECAUTIONS**

### **5.1 Cardiovascular Toxicity**

Torsades de pointes and ventricular tachycardia have been reported with anagrelide. Obtain a pre-treatment cardiovascular examination including an ECG in all patients. During treatment with anagrelide monitor patients for cardiovascular effects and evaluate as necessary.

Anagrelide increases the QTc interval of the electrocardiogram and increases the heart rate in healthy volunteers [see *Clinical Pharmacology (12.2)*].

Do not use anagrelide in patients with known risk factors for QT interval prolongation, such as congenital long QT syndrome, a known history of acquired QTc prolongation, medicinal products that can prolong QTc interval and hypokalemia [see *Drug Interactions (7.1)*].

Hepatic impairment increases anagrelide exposure and could increase the risk of QTc prolongation. Monitor patients with hepatic impairment for QTc prolongation and other cardiovascular adverse reactions. The potential risks and benefits of anagrelide therapy in a patient with mild and moderate hepatic impairment should be assessed before treatment is commenced. Reduce anagrelide dose in patients with moderate hepatic impairment. Avoid use of anagrelide in patients with severe hepatic impairment.

In patients with heart failure, bradyarrhythmias, or electrolyte abnormalities, consider periodic monitoring with electrocardiograms [see *Clinical Pharmacology (12.2)*].

Anagrelide is a phosphodiesterase 3 (PDE3) inhibitor and may cause vasodilation, tachycardia, palpitations, and congestive heart failure. Other drugs that inhibit PDE3 have caused decreased survival when compared with placebo in patients with Class III-IV congestive heart failure [see *Drug Interactions (7.2)*].

In patients with cardiac disease, use anagrelide only when the benefits outweigh the risks.

### **5.2 Pulmonary Hypertension**

Cases of pulmonary hypertension have been reported in patients treated with anagrelide. Evaluate patients for signs and symptoms of underlying cardiopulmonary disease prior to initiating and during anagrelide therapy [see *Adverse Reactions (6.1)*].

### **5.3 Bleeding Risk**

Use of concomitant anagrelide and aspirin increased major hemorrhagic events in a postmarketing study. Assess the potential risks and benefits for concomitant use of anagrelide with aspirin, since bleeding risks may be increased. Monitor patients for bleeding, including those receiving concomitant therapy with other drugs known to cause bleeding (e.g., anticoagulants, PDE3 inhibitors, NSAIDs, antiplatelet agents, selective serotonin reuptake inhibitors) [see *Drug Interactions (7.3)*, *Clinical Pharmacology (12.3)*].

## 5.4 Pulmonary Toxicity

Interstitial lung diseases (including allergic alveolitis, eosinophilic pneumonia and interstitial pneumonitis) have been reported to be associated with the use of anagrelide in post-marketing reports. Most cases presented with progressive dyspnea with lung infiltrations. The time of onset ranged from 1 week to several years after initiating anagrelide. If suspected, discontinue anagrelide and evaluate. Symptoms may improve after discontinuation [see *Adverse Reactions (6)*].

## 6 ADVERSE REACTIONS

The following clinically significant adverse reactions are discussed in greater detail in other sections of the labeling:

- Cardiovascular Toxicity [see *Warnings and Precautions (5.1)*]
- Pulmonary Hypertension [see *Warnings and Precautions (5.2)*]
- Bleeding Risk [see *Warnings and Precautions (5.3)*]
- Pulmonary Toxicity [see *Warnings and Precautions (5.4)*]

### 6.1 Clinical Trials Experience

Because clinical trials are conducted under widely varying conditions, adverse reaction rates observed in the clinical trials of a drug cannot be directly compared to rates in the clinical trials of another drug and may not reflect the rates observed in practice.

#### *Clinical Studies in Adult Patients*

In three single-arm clinical studies, 942 patients [see *Clinical Trials (14)*] diagnosed with myeloproliferative neoplasms of varying etiology (ET: 551; PV: 117; OMPN: 274) were exposed to anagrelide with a mean duration of approximately 65 weeks. Serious adverse reactions reported in these patients included the following: congestive heart failure, myocardial infarction, cardiomyopathy, cardiomegaly, complete heart block, atrial fibrillation, cerebrovascular accident, pericardial effusion [see *Warnings and Precautions (5.1)*], pleural effusion, pulmonary infiltrates, pulmonary fibrosis, pulmonary hypertension, and pancreatitis. Of the 942 patients treated with anagrelide, 161 (17%) were discontinued from the study because of adverse reactions or abnormal laboratory test results. The most common adverse reactions resulting in treatment discontinuation were headache, diarrhea, edema, palpitations, and abdominal pain.

The most frequently reported adverse reactions to anagrelide (in 5% or greater of 942 patients with myeloproliferative neoplasms) in clinical trials were listed in Table 1.

**Table 1: Adverse Reactions Reported in Clinical Studies of Anagrelide in at least 5% of Patients**

<b><u>Adverse Reactions</u></b>	<b>Anagrelide (N=942) (%)</b>
<b><u>Cardiac disorders</u></b>	
Palpitations	26%
Tachycardia	8%
Chest pain	8%
<b><u>General disorders and administration site conditions</u></b>	
Asthenia	23%
Edema	21%
Pain	15%
Fever	9%
Peripheral edema	9%
Malaise	6%
<b><u>Gastrointestinal disorders</u></b>	
Diarrhea	26%
Nausea	17%
Abdominal pain	16%
Vomiting	10%
Flatulence	10%
Anorexia	8%
Dyspepsia	5%
<b><u>Respiratory, thoracic and mediastinal disorders</u></b>	
Dyspnea	12%
Cough	6%

<b><u>Skin and subcutaneous tissue disorders</u></b>	
Rash	8%
Pruritus	6%
<b><u>Musculoskeletal and connective tissue disorders</u></b>	
Back pain	6%
<b><u>Nervous system disorders</u></b>	
Headache	44%
Dizziness	15%
Paresthesia	6%

**Adverse Reactions (frequency 1% to < 5%) included:**

General disorders and administration site conditions: Flu symptoms, chills.

Cardiac disorders: Arrhythmia, angina pectoris, heart failure, syncope.

Vascular disorders: Hemorrhage, hypertension, postural hypotension, vasodilatation.

Gastrointestinal disorders: Constipation, gastrointestinal hemorrhage, gastritis.

Blood and lymphatic system disorders: Anemia, thrombocytopenia, ecchymosis.

Hepatobiliary disorders: Elevated liver enzymes.

Musculoskeletal and connective tissue disorders: Arthralgia, myalgia.

Psychiatric disorders: Depression, confusion, nervousness.

Nervous system disorders: Somnolence, insomnia, amnesia, migraine headache.

Respiratory, thoracic and mediastinal disorders: Epistaxis, pneumonia.

Skin and subcutaneous tissue disorders: Alopecia.

Eye disorders: Abnormal vision, diplopia.

Ear and labyrinth disorders: Tinnitus.

Renal and urinary disorders: Hematuria, renal failure.

**Other less frequent adverse reactions (<1%) were:**

Cardiac disorders: Ventricular tachycardia, supraventricular tachycardia.

Nervous system disorders: Hypoesthesia.

*Clinical Study in Pediatric Patients*

The frequency of adverse reactions observed in pediatric patients was similar to adult patients. The most common adverse reactions observed in pediatric patients were fever, epistaxis, headache, and fatigue during the 3-month anagrelide treatment in the study. Episodes of increased pulse and decreased systolic or diastolic blood pressure beyond the normal ranges in the absence of clinical symptoms were observed. Other adverse reactions reported in these pediatric patients receiving anagrelide treatment were palpitations, headache, nausea, vomiting, abdominal pain, back pain, anorexia, fatigue, and muscle cramps.

## **6.2 Postmarketing Experience**

The following adverse reactions have been identified during post-marketing use of anagrelide. Because these reactions are reported voluntarily from a population of uncertain size, it is not always possible to reliably estimate their frequency or establish a causal relationship to drug exposure.

Cardiac disorders: Prinzmetal angina, Torsades de pointes.

Respiratory, thoracic and mediastinal disorders: Interstitial lung diseases (including allergic alveolitis, eosinophilic pneumonia, and interstitial pneumonitis) [see *Warnings and Precautions (5.4)*].

Renal and urinary disorders: Tubulointerstitial nephritis.

Hepatobiliary disorders: Clinically significant hepatotoxicity (including symptomatic ALT and AST elevations and elevations greater than three times the ULN).

Nervous system disorders: Cerebral infarction

Other adverse reactions in pediatric patients reported in spontaneous reports and literature reviews include:

Blood and lymphatic system disorders: Anemia.

Skin and subcutaneous tissue disorders: Cutaneous photosensitivity.

Investigations: Elevated leukocyte count.

## **7 DRUG INTERACTIONS**

### **7.1 Drugs that Prolong QT**

Avoid use of anagrelide in patients taking medications that may prolong QT interval (including, but not limited to, chloroquine, clarithromycin, haloperidol, methadone, moxifloxacin, amiodarone, disopyramide, procainamide, and pimozide) [see *Warnings and Precautions (5.1)* and *Clinical Pharmacology (12.2)*].

### **7.2 PDE3 Inhibitors**

Anagrelide is a phosphodiesterase 3 (PDE3) inhibitor. Avoid use of drug products with similar properties such as inotropes and other PDE3 inhibitors (e.g., cilostazol, milrinone) [see *Warnings and Precautions (5.1)* and *Clinical Pharmacology (12.2)*].

### **7.3 Aspirin and Drugs that Increase Bleeding Risk**



Co-administration of single-dose or repeat-dose anagrelide and aspirin showed greater *ex vivo* anti-platelet aggregation effects than administration of aspirin alone [see *Clinical Pharmacology* (12.3)]. Results from an observational study in patients with essential thrombocythemia suggest the rate of major hemorrhagic events (MHEs) in patients treated with anagrelide is higher than in those subjects treated with another cytoreductive treatment. The majority of the major hemorrhagic events occurred in patients who were also receiving concomitant anti-aggregatory treatment (primarily, aspirin). Therefore, the potential risks of the concomitant use of anagrelide with aspirin should be assessed, particularly in patients with a high-risk profile for hemorrhage, before treatment is initiated [see *Warnings and Precautions* (5.3)].

Monitor patients for bleeding, particularly those receiving concomitant therapy with other drugs known to cause bleeding (e.g., anticoagulants, PDE3 inhibitors, NSAIDs, antiplatelet agents, selective serotonin reuptake inhibitors).

## 7.4 CYP450 Interactions

*CYP1A2 inhibitors:* Anagrelide and its active metabolite are primarily metabolized by CYP1A2. Drugs that inhibit CYP1A2 (e.g., fluvoxamine, ciprofloxacin) could increase the exposure of anagrelide. Monitor patients for cardiovascular events and titrate doses accordingly when CYP1A2 inhibitors are co-administered.

*CYP1A2 inducers:* CYP1A2 inducers could decrease the exposure of anagrelide. Patients taking concomitant CYP1A2 inducers (e.g., omeprazole) may need to have their dose titrated to compensate for the decrease in anagrelide exposure.

*CYP1A2 substrates:* Anagrelide demonstrates limited inhibitory activity towards CYP1A2 *in vitro* and may alter the exposure of concomitant CYP1A2 substrates (e.g., theophylline, fluvoxamine, ondansetron).

## 8 USE IN SPECIFIC POPULATIONS

### 8.1 Pregnancy

#### Risk Summary

Available data from case reports with anagrelide use in pregnant women have not identified a drug-associated risk of major birth defects, miscarriage, or adverse maternal or fetal outcomes. In animal embryo-fetal studies, delayed fetal development (delayed skeletal ossification and reduced body weight) was observed in rats administered anagrelide hydrochloride during organogenesis at doses approximately 97 times the maximum clinical dose (10 mg/day) based on body surface area (see *Data*). There are adverse effects on maternal and fetal outcomes associated with thrombocythemia in pregnancy (see *Clinical Considerations*).

The estimated background risk of major birth defects and miscarriage for the indicated population is unknown. All pregnancies have a background risk of birth defect, loss, or other adverse outcomes. In the U.S. general population, the estimated background risk of major birth defect and miscarriage in clinically recognized pregnancies is 2% to 4% and 15% to 20%, respectively.

#### Clinical Considerations

### *Disease-associated maternal and/or embryo/fetal risk*

Thrombotic events, such as stroke, deep vein thrombosis, or myocardial infarction, can be complications of thrombocytopenia. Thrombocytopenia in pregnancy is associated with an increased risk for miscarriage, stillbirth, and other maternal outcomes, such as preeclampsia.

### Data

#### *Animal Data*

Anagrelide hydrochloride was administered orally to pregnant rats and rabbits during the period of organogenesis at doses up to 900 mg/kg/day in rats and up to 20 mg/kg/day in rabbits (875 and 39 times, respectively, the maximum clinical dose of 10 mg/day based on body surface area). In rats, developmental delays were observed including reductions in fetal weight at 300 and 900 mg/kg/day and delays in skeletal ossification at doses of 100 mg/kg/day and higher. The dose of 100 mg/kg/day (600 mg/m<sup>2</sup>/day) in rats is approximately 97 times the maximum clinical dose based on body surface area. No adverse embryo-fetal effects were detected in rabbits at the highest dose of 20 mg/kg/day (39 times the maximal clinical dose based on body surface area).

In a pre- and post-natal study conducted in female rats, anagrelide hydrochloride administered at oral doses of 60 mg/kg/day (58 times the maximum clinical dose based on body surface area) or higher during organogenesis through lactation produced delay or blockage of parturition, deaths of non-delivering pregnant dams and their fully developed fetuses, and increased mortality in the pups born.

In a placental transfer study, a single oral dose of [<sup>14</sup>C]-anagrelide hydrochloride (3 mg/kg) was administered to pregnant rats on gestation Day 17. Drug-related radioactivity was detected in maternal and fetal tissue.

## **8.2 Lactation**

### Risk Summary

There is no information regarding the presence of anagrelide in human milk, the effect on the breastfed child, or the effects on milk production. Anagrelide or its metabolites have been detected in the milk of lactating rats (*see Data*). Because of the potential for serious adverse reactions, including thrombocytopenia, in a breastfed child, advise patients that breastfeeding is not recommended during treatment with anagrelide, and for one week following the last dose.

### Data

In a rat milk secretion study, a single oral dose of [<sup>14</sup>C]-anagrelide hydrochloride (3 mg/kg) was administered to lactating female rats on postnatal Day 10. Drug-related radioactivity was detected in the maternal milk and blood.

## **8.3 Females and Males of Reproductive Potential**

### Infertility

#### *Females*

Based on findings from animal studies, anagrelide may impair female fertility[*see Nonclinical Toxicology (13.1)*].

## 8.4 Pediatric Use

The safety and effectiveness of anagrelide have been established in pediatric patients 7 years of age and older. There are no data for pediatric patients less than 7 years of age. Use of anagrelide in these pediatric patients is supported by evidence from adequate and well controlled studies of anagrelide in adults with additional pharmacokinetic, pharmacodynamic, and safety data in 18 pediatric patients aged 7 through 16 years with thrombocythemia secondary to ET [see *Dosage and Administration (2.1)*, *Clinical Pharmacology (12.3)*, and *Clinical Studies (14)*].

There were no apparent trends or differences in the types of adverse events observed between the pediatric patients compared with those of the adult patients [see *Adverse Reactions (6.1)*].

## 8.5 Geriatric Use

Of the 942 subjects in clinical studies of anagrelide, 42.1% were 65 years and over, while 14.9% were 75 years and over. No overall differences in safety or effectiveness were observed between these subjects and younger subjects, and other reported clinical experience has not identified differences in response between the elderly and younger patients, but greater sensitivity of some older individuals cannot be ruled out.

## 8.6 Hepatic Impairment

Hepatic metabolism is the major route of anagrelide clearance. Exposure to anagrelide is increased 8-fold in patients with moderate hepatic impairment [see *Clinical Pharmacology (12.3)*] and dose reduction is required [see *Dosage and Administration (2.3)*]. Use of anagrelide in patients with severe hepatic impairment has not been studied. Avoid use of anagrelide in patients with severe hepatic impairment. The potential risks and benefits of anagrelide therapy in a patient with mild and moderate hepatic impairment should be assessed before treatment is commenced. Assess hepatic function before and during anagrelide treatment [see *Warnings and Precautions (5.1)*].

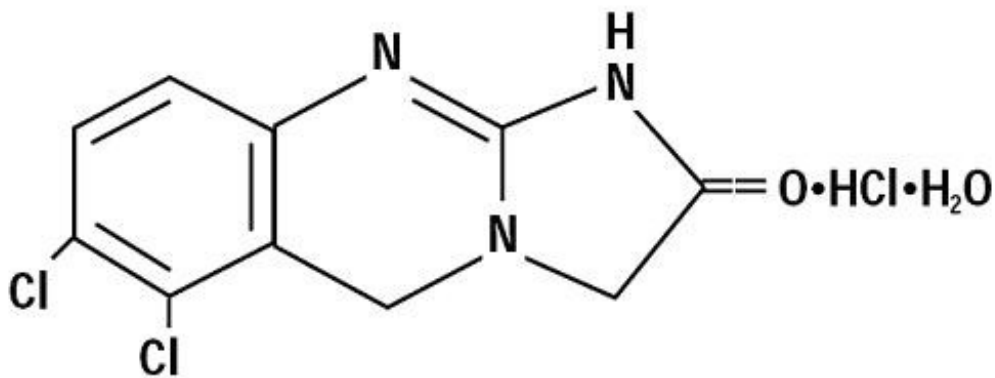
## 10 OVERDOSAGE

At higher than recommended doses, anagrelide has been shown to cause hypotension. There have been postmarketing case reports of intentional overdose with anagrelide hydrochloride. Reported symptoms include sinus tachycardia and vomiting. Symptoms resolved with supportive management. Platelet reduction from anagrelide therapy is dose-related; therefore, thrombocytopenia, which can potentially cause bleeding, is expected from overdosage.

In case of overdosage, stop anagrelide dosing and monitor platelet counts for thrombocytopenia and observe for possible complications such as bleeding. Consider resumption of anagrelide dosing once the platelet count returns to the normal range.

## 11 DESCRIPTION

Anagrelide hydrochloride, USP is a platelet-reducing agent. Its chemical name is 6,7-dichloro-1,5-dihydroimidazo[2,1-b]quinazolin-2(3H)-one monohydrochloride monohydrate and it has the following structural formula:



$C_{10}H_7Cl_2N_3O \cdot HCl \cdot H_2O$  M.W. 310.56

Anagrelide hydrochloride, USP is an off-white powder. It is very slightly soluble in water and sparingly soluble in dimethyl sulfoxide and dimethylformamide.

Each Anagrelide Capsule USP, for oral administration, contains either 0.5 mg or 1 mg of anagrelide base (as anagrelide hydrochloride, USP) and has the following inactive ingredients: black iron oxide, crospovidone, D&C Yellow #10 Aluminum Lake, FD&C Blue #1/Brilliant Blue Aluminum Lake, FD&C Blue #2/Indigo Carmine Aluminum Lake, FD&C Red #40/Allura Red Aluminum Lake, gelatin, lactose anhydrous, lactose monohydrate, magnesium stearate, microcrystalline cellulose, povidone, propylene glycol, shellac glaze and titanium dioxide.

## 12 CLINICAL PHARMACOLOGY

### 12.1 Mechanism of Action

The precise mechanism by which anagrelide reduces blood platelet count is unknown. In cell culture studies, anagrelide suppressed expression of transcription factors including GATA-1 and FOG-1 required for megakaryocytopoiesis, ultimately leading to reduced platelet production.

### 12.2 Pharmacodynamics

In blood withdrawn from normal volunteers treated with anagrelide, a disruption was found in the postmitotic phase of megakaryocyte development and a reduction in megakaryocyte size and ploidy. At therapeutic doses, anagrelide does not produce significant changes in white cell counts or coagulation parameters, and may have a small, but clinically insignificant effect on red cell parameters. The active metabolite, 3-hydroxy anagrelide, has similar potency and efficacy to that of anagrelide in the platelet lowering effect; however, exposure (measured by plasma AUC) to 3-hydroxy anagrelide is approximately 2-fold higher compared to anagrelide. Anagrelide and 3-hydroxy anagrelide inhibit cyclic AMP phosphodiesterase 3 (PDE3) and 3-hydroxy anagrelide is approximately forty times more potent than anagrelide ( $IC_{50s} = 0.9$  and  $36$  nM, respectively). PDE3 inhibition does not alter platelet production. PDE3 inhibitors, as a class can inhibit platelet aggregation. However, significant inhibition of platelet

aggregation is observed only at doses of anagrelide higher than those typically required to reduce platelet count. PDE3 inhibitors have cardiovascular (CV) effects including vasodilation, positive inotropy and chronotropy.

### Cardiac Electrophysiology

The effect of anagrelide dose (0.5 mg and 2.5 mg single doses) on the heart rate and QTc interval prolongation potential was evaluated in a double-blind, randomized, placebo- and active-controlled, cross-over study in 60 healthy adult men and women.

A dose-related increase in heart rate was observed, with the maximum increase occurring around the time of maximal drug concentration (0.5 to 4 hours). The maximum change in mean heart rate occurred at 2 hours after administration and was +7.8 beats per minute (bpm) for 0.5 mg and +29.1 bpm for 2.5 mg.

Dose-related increase in mean QTc was observed. The maximum mean (95% upper confidence bound) change in QTcI (individual subject correction) from placebo after baseline-correction was 7 (9.8) ms and 13 (15.7) ms following anagrelide doses of 0.5 mg and 2.5 mg, respectively.

## **12.3 Pharmacokinetics**

Dose proportionality has been found in the dose range 0.5 mg to 2.5 mg.

### Absorption

Following oral administration of anagrelide, at least 70% is absorbed from the gastrointestinal tract. In fasted subjects, anagrelide peak plasma concentrations occur within about 1 hour after administration.

Pharmacokinetic data obtained from healthy volunteers comparing the pharmacokinetics of anagrelide in the fed and fasted states showed that administration of a 1 mg dose of anagrelide with food decreased the  $C_{max}$  by 14%, but increased the AUC by 20%. Food decreased the  $C_{max}$  of the active metabolite 3-hydroxy anagrelide by 29%, although it had no effect on the AUC.

*Metabolism:* Anagrelide is primarily metabolized by CYP1A2 to the active metabolite, 3-hydroxy anagrelide, which is subsequently metabolized by CYP1A2 to the inactive metabolite, RL603. Less than 1% of the administered dose is recovered in the urine as anagrelide, and approximately 3% and 16 to 20% of the administered dose is recovered as 3-hydroxy anagrelide and RL603, respectively.

### Elimination

Anagrelide and 3-hydroxy anagrelide are eliminated with plasma half-lives of approximately 1.5 and 2.5 hours, respectively. Anagrelide and 3-hydroxy anagrelide do not accumulate in plasma when the clinical dose regimens are administered.

### *Drug Interactions*

*Aspirin:* In two pharmacodynamic interaction studies in healthy subjects, co-administration of single-dose anagrelide 1 mg and aspirin 900 mg or repeat-dose anagrelide 1 mg once daily and aspirin 75 mg once daily showed greater *ex vivo* anti-platelet aggregation effects than administration of aspirin alone. Co-administered anagrelide 1 mg and aspirin 900 mg single-doses had no effect on bleeding time, prothrombin time (PT) or activated partial thromboplastin time (aPTT).

*Digoxin or warfarin:* *In vivo* interaction studies in humans have demonstrated that anagrelide does not affect the pharmacokinetic properties of digoxin or warfarin, nor does digoxin or warfarin affect the pharmacokinetic properties of anagrelide.

### Specific Populations

*Pediatric:* Dose-normalized  $C_{max}$  and AUC of anagrelide were higher in children and adolescents (age range 7 through 16 years) with essential thrombocythemia, by 17% and 56%, respectively, than in adult patients (19 through 57 years).

*Geriatric:*  $C_{max}$  and AUC of anagrelide were 36% and 61% higher, respectively, in elderly patients (age range 65 through 75 years), than in younger adults (age range 22 through 50 years), but  $C_{max}$  and AUC of the active metabolite, 3-hydroxy anagrelide, were 42% and 37% lower, respectively, in the elderly patients.

*Renal Impairment:* Pharmacokinetic study at a single dose of 1 mg anagrelide in subjects with severe renal impairment (creatinine clearance <30 mL/min) showed no significant effects on the pharmacokinetics of anagrelide.

*Hepatic Impairment:* A pharmacokinetic study at a single dose of 1 mg anagrelide in subjects with moderate hepatic impairment (Child Pugh score 7 to 9) showed a 2-fold increase in mean anagrelide  $C_{max}$  and an 8-fold increase in total exposure (AUC) to anagrelide compared with healthy subjects. Additionally, subjects with moderate hepatic impairment showed 24% lower mean 3-hydroxy anagrelide  $C_{max}$  and 77% higher mean 3-hydroxy anagrelide AUC compared to healthy subjects.

## **13 NONCLINICAL TOXICOLOGY**

### **13.1 Carcinogenesis, Mutagenesis, Impairment of Fertility**

In a two-year rat carcinogenicity study a higher incidence of uterine adenocarcinoma, relative to controls, was observed in females receiving 30 mg/kg/day (at least 174 times human AUC exposure after a 1 mg twice daily dose). Adrenal pheochromocytomas were increased relative to controls in males receiving 3 mg/kg/day and above, and in females receiving 10 mg/kg/day and above (at least 10 and 18 times respectively human AUC exposure after a 1 mg twice daily dose).

Anagrelide hydrochloride was not mutagenic in the bacterial mutagenesis (Ames) assay or the mouse lymphoma cell (L5178Y, TK+/-) forward mutation assay, and was not clastogenic in the *in vitro* chromosome aberration assay using human lymphocytes or the *in vivo* mouse micronucleus test.

Anagrelide hydrochloride at oral doses up to 240 mg/kg/day (233 times the recommended human dose of 10 mg/day based on body surface area) had no effect on fertility and reproductive function of male rats. However, in fertility studies in female rats, oral doses of 30 mg/kg/day (29 times the recommended maximum human dose based on body surface area) or higher resulted in increased pre- and post-implantation loss and a decrease in the number of live embryos.

### **13.2 Animal Toxicology and/or Pharmacology**

In the 2-year rat study, a significant increase in non-neoplastic lesions was observed in anagrelide treated males and females in the adrenal (medullary hyperplasia), heart

(myocardial hypertrophy and chamber distension), kidney (hydronephrosis, tubular dilation and urothelial hyperplasia), and bone (femur enostosis). Vascular effects were observed in tissues of the pancreas (arteritis/periarteritis, intimal proliferation, and medial hypertrophy), kidney (arteritis/periarteritis, intimal proliferation, and medial hypertrophy), sciatic nerve (vascular mineralization), and testes (tubular atrophy and vascular infarct) in anagrelide-treated males.

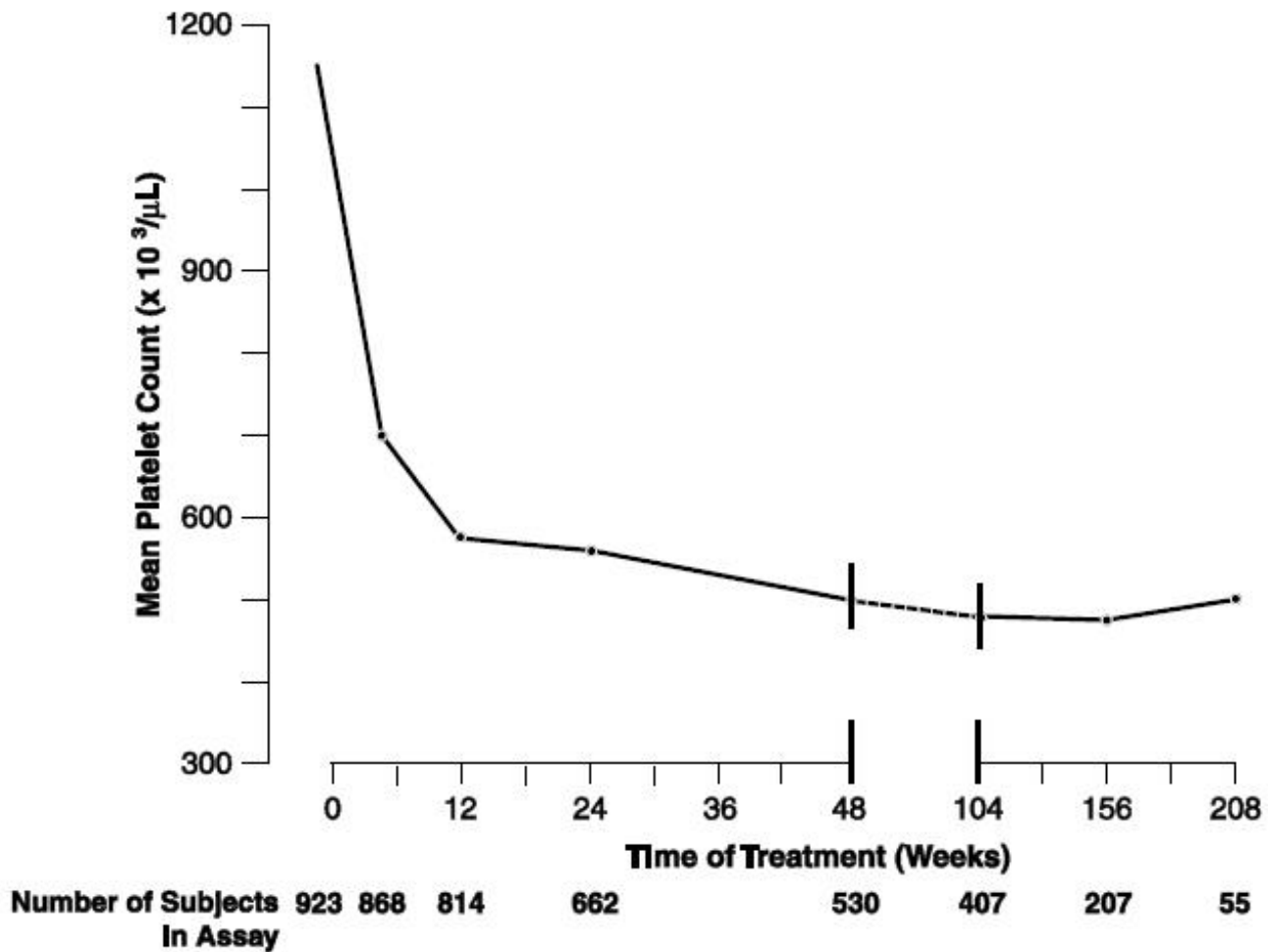
## **14 CLINICAL STUDIES**

### *Clinical Studies in Adult Patients:*

A total of 942 patients with myeloproliferative neoplasms including 551 patients with Essential Thrombocythemia (ET), 117 patients with Polycythemia Vera (PV), 178 patients with Chronic Myelogenous Leukemia (CML), and 96 patients with other myeloproliferative neoplasms (OMP), were treated with anagrelide in three clinical trials. Patients with OMP included 87 patients who had Myeloid Metaplasia with Myelofibrosis (MMM), and 9 patients who had unclassified myeloproliferative neoplasms.

Patients were enrolled in clinical trials if their platelet count was  $\geq 900,000/\mu\text{L}$  on two occasions or  $\geq 650,000/\mu\text{L}$  on two occasions with documentation of symptoms associated with thrombocythemia. The mean duration of anagrelide therapy for ET, PV, CML, and OMP patients was 65, 67, 40, and 44 weeks, respectively; 23% of patients received treatment for 2 years. Patients were treated with anagrelide starting at doses of 0.5 to 2 mg every 6 hours. The dose was increased if the platelet count was still high, but to no more than 12 mg each day. Efficacy was defined as reduction of platelet count to or near physiologic levels (150,000 to 400,000/ $\mu\text{L}$ ). The criteria for defining subjects as “responders” were reduction in platelets for at least 4 weeks to  $\leq 600,000/\mu\text{L}$ , or by at least 50% from baseline value. Subjects treated for less than 4 weeks were not considered evaluable. The results are depicted graphically below:

### **Patients with Thrombocytosis Secondary to Myeloproliferative Disorders: Mean Platelet Count During Anagrelide Therapy**



	<u>Time on Treatment</u>				<u>Years</u>			
	<u>Baseline</u>	<u>4</u>	<u>12</u>	<u>24</u>	<u>2</u>	<u>3</u>	<u>4</u>	
Mean*	1131	683	575	526	484	460	437	457
N	923 <sup>†</sup>	868	814	662	530	407	207	55

\*x 10<sup>3</sup>/μL

<sup>†</sup>Nine hundred and forty-two subjects with myeloproliferative neoplasms were enrolled in three research studies. Of these, 923 had platelet counts measured over the duration of the studies.

Anagrelide was effective in phlebotomized patients as well as in patients treated with other concomitant therapies including hydroxyurea, aspirin, interferon, radioactive phosphorus, and alkylating agents.

*Clinical Study in Pediatric Patients:*

An open-label safety and PK/PD study was conducted in 18 pediatric patients 7 through 16 years of age (8 children 7 through 11 years of age and 10 adolescents 12 through 16 years of age, mean age of 12 years; 8 males and 10 females) with thrombocytopenia secondary to ET as compared to 17 adult patients (mean age of 66 years, 9 males and 8 females). Prior to entry on to the study, 17 of 18 pediatric patients and 12 of 17 adult patients had received anagrelide treatment for an average of 2 years. The median starting total daily dose, determined by retrospective chart review, for pediatric and adult patients with ET who had received anagrelide prior to study entry was 1 mg for



each of the three age groups (7 through 11 and 12 through 16 years of age and adults). The starting dose for 6 anagrelide-naïve patients at study entry was 0.5 mg once daily. At study completion, the median total daily maintenance doses were similar across age groups, median of 1.75 mg for children of 7 through 11 years of age, 2.25 mg in adolescents 12 through 16 years of age, and 1.5 mg for adults.

## 16 HOW SUPPLIED/STORAGE AND HANDLING

Anagrelide Capsules USP, 0.5 mg are available as light gray opaque cap/white opaque body hard gelatin capsules, spin printed in black ink “Ivax hourglass logo” “5241” on the cap and “0.5 mg” on the body containing 0.5 mg of anagrelide base (as anagrelide hydrochloride, USP).

NDC 0172-**5241**-60 0.5 mg packaged in bottles of 100 capsules

Anagrelide Capsules USP, 1 mg are available as white opaque hard gelatin capsules, spin printed in black ink “Ivax hourglass logo” “5240” on the cap and “1 mg” on the body containing 1 mg of anagrelide base (as anagrelide hydrochloride, USP).

NDC 0172-**5240**-60 1 mg packaged in bottles of 100 capsules

Store at 20° to 25°C (68° to 77°F) [See USP Controlled Room Temperature].

Dispense in a tight, light-resistant container as defined in the USP, with a child-resistant closure (as required).

KEEP THIS AND ALL MEDICATIONS OUT OF THE REACH OF CHILDREN.

## 17 PATIENT COUNSELING INFORMATION

- **Dose:** Tell the patient that their dose will be adjusted on a weekly basis until they are on a dose that lowers their platelets to an appropriate level. This will also help the patient to adjust to common side effects. Tell the patient to contact their doctor if they experience tolerability issues, so the dose or dosing frequency can be adjusted [see *Dosage and Administration (2)*].
- **Cardiovascular effects:** Tell the patient to contact a doctor immediately if they experience chest pain, palpitations, or feel their heartbeat is irregular [see *Warnings and Precautions (5.1)*].
- **Risk of Pulmonary Hypertension:** Tell the patient to contact a doctor immediately if they experience shortness of breath, swelling in legs or ankles, or lips and skin turn a bluish color [see *Warnings and Precautions (5.2)*].
- **Risk of bleeding:** Warn the patient that concomitant aspirin (or other medicines that affect blood clotting) may increase the risk of bleeding. Tell the patient to contact a doctor immediately if they experience signs or symptoms of bleeding (e.g., vomit blood, pass bloody or black stools) or experience unexplained bruising/bruise more easily than usual [see *Warnings and Precautions (5.3)*, *Drug Interactions (7.1)*].
- **Lactation:** Advise patients not to breastfeed during treatment with anagrelide, and for one week following the last dose [see *Use in Specific Populations (8.2)*].
- **Infertility:** Advise females of reproductive potential treatment with anagrelide may impair fertility [see *Use in Specific Populations (8.3)*, *Nonclinical Toxicology (13.1)*].

Manufactured In India By:

**Cipla Limited**

Verna, Salcette, Goa-403 722, India

Manufactured For:

**Teva Pharmaceuticals USA, Inc.**

Parsippany, NJ 07054

Rev. M 3/2022

**Package/Label Display Panel**

**NDC 0172-5241-60**

**Anagrelide Capsules, USP**

**0.5 mg**

PLATELET-REDUCING AGENT

**Rx only**

**100 Capsules**

**Teva**

NDC 0172-5241-60

**Anagrelide Capsules, USP**

**0.5 mg**

PLATELET-REDUCING AGENT

Rx only

100 Capsules

teva

Each capsule contains 0.5 mg anagrelide base (as anagrelide hydrochloride, USP).

**DOSAGE AND ADMINISTRATION:** Starting dose of 1 capsule up to 4 times daily or as prescribed by the physician. Dosage may require adjustment.

Total daily dose should not exceed 10 mg. See package insert.

Store at 20° to 25°C (68° to 77°F) [See USP Controlled Room Temperature].

Dispense in a tight, light-resistant container as defined in the USP, with a child-resistant closure (as required).

**KEEP THIS AND ALL MEDICATIONS OUT OF THE REACH OF CHILDREN.**

M.L.No. 536

Manufactured in India By:  
Cipla Limited  
Verna, Salcette, Goa-403 722, India

Manufactured For:  
Teva Pharmaceuticals USA, Inc.  
Parsippany, NJ 07054

CTIN 00301725241601

3 0172-5241-60 1

219116 Rev. B 7/2020

Serialization Coding Area

**Package/Label Display Panel**

**NDC 0172-5240-60**

**Anagrelide Capsules, USP**

**1 mg**

PLATELET-REDUCING AGENT

**Rx only**

100 Capsules

Teva



Each capsule contains 1 mg anagrelide base (as anagrelide hydrochloride, USP).

**DOSE AND ADMINISTRATION:**  
Starting dose of 1 capsule up to 2 times daily or as prescribed by the physician. Dosage may require adjustment. Total daily dose should not exceed 10 mg. See package insert.

Store at 20° to 25°C (68° to 77°F) [See USP Controlled Room Temperature].

Dispense in a tight, light-resistant container as defined in the USP, with a child-resistant closure (as required). **KEEP THIS AND ALL MEDICATIONS OUT OF THE REACH OF CHILDREN.**

M.L.No. 536

Manufactured in India By:  
Cipla Limited  
Verna, Salcette, Goa-403722, India

Manufactured For:  
Teva Pharmaceuticals USA, Inc.  
 Parsippany, NJ 07054

GTIN 00301725240604

NDC 0172-5240-60

# Anagrelide Capsules, USP

**1 mg**

PLATELET-REDUCING AGENT

Rx only

100 Capsules

219117 Rev. B 7/2020

Serialization Coding Area

## ANAGRELIDE HYDROCHLORIDE

anagrelide hydrochloride capsule

### Product Information

Product Type	HUMAN PRESCRIPTION DRUG	Item Code (Source)	NDC:0172-5241
Route of Administration	ORAL		

### Active Ingredient/Active Moiety

Ingredient Name	Basis of Strength	Strength
ANAGRELIDE HYDROCHLORIDE (UNII: YTM763Y5C8) (ANAGRELIDE - UNII:K9X45X0051)	ANAGRELIDE	0.5 mg

### Inactive Ingredients

Ingredient Name	Strength
FERROSFERRIC OXIDE (UNII: XM0M87F357)	
CROSPVIDONE (15 MPA.S AT 5%) (UNII: 68401960MK)	
D&C YELLOW NO. 10 ALUMINUM LAKE (UNII: CQ3XH3DET6)	
FD&C BLUE NO. 1 ALUMINUM LAKE (UNII: J9EQA3S2JM)	
FD&C BLUE NO. 2--ALUMINUM LAKE (UNII: 4AQJ3LG584)	
FD&C RED NO. 40 (UNII: WZB9127XOA)	
GELATIN (UNII: 2G86QN327L)	
ANHYDROUS LACTOSE (UNII: 3SY5LH9PMK)	
LACTOSE MONOHYDRATE (UNII: EWQ57Q8I5X)	
MAGNESIUM STEARATE (UNII: 70097M6I30)	

<b>CELLULOSE, MICROCRYSTALLINE</b> (UNII: OP1R32D61U)	
<b>POVIDONE K30</b> (UNII: U725QWY32X)	
<b>PROPYLENE GLYCOL</b> (UNII: 6DC9Q167V3)	
<b>SHELLAC</b> (UNII: 46N107B71O)	
<b>TITANIUM DIOXIDE</b> (UNII: 15FIX9V2JP)	

### Product Characteristics

<b>Color</b>	gray (light gray) , white	<b>Score</b>	no score
<b>Shape</b>	CAPSULE	<b>Size</b>	14mm
<b>Flavor</b>		<b>Imprint Code</b>	5241;0;5;mg
<b>Contains</b>			

### Packaging

#	Item Code	Package Description	Marketing Start Date	Marketing End Date
1	NDC:0172-5241-60	100 in 1 BOTTLE; Type 0: Not a Combination Product	04/18/2005	

### Marketing Information

Marketing Category	Application Number or Monograph Citation	Marketing Start Date	Marketing End Date
ANDA	ANDA076468	04/18/2005	

## ANAGRELIDE HYDROCHLORIDE

anagrelide hydrochloride capsule

### Product Information

<b>Product Type</b>	HUMAN PRESCRIPTION DRUG	<b>Item Code (Source)</b>	NDC:0172-5240
<b>Route of Administration</b>	ORAL		

### Active Ingredient/Active Moiety

Ingredient Name	Basis of Strength	Strength
<b>ANAGRELIDE HYDROCHLORIDE</b> (UNII: YTM763Y5C8) (ANAGRELIDE - UNII:K9X45X0051)	ANAGRELIDE	1 mg

### Inactive Ingredients

Ingredient Name	Strength
<b>FERROSFERRIC OXIDE</b> (UNII: XM0M87F357)	
<b>CROSPVIDONE (15 MPA.S AT 5%)</b> (UNII: 68401960MK)	
<b>D&amp;C YELLOW NO. 10 ALUMINUM LAKE</b> (UNII: CQ3XH3DET6)	
<b>FD&amp;C BLUE NO. 1 ALUMINUM LAKE</b> (UNII: J9EQA3S2JM)	

<b>FD&amp;C BLUE NO. 2--ALUMINUM LAKE</b> (UNII: 4AQJ3LG584)	
<b>FD&amp;C RED NO. 40</b> (UNII: WZB9127XOA)	
<b>GELATIN</b> (UNII: 2G86QN327L)	
<b>ANHYDROUS LACTOSE</b> (UNII: 3SY5LH9PMK)	
<b>LACTOSE MONOHYDRATE</b> (UNII: EWQ57Q8I5X)	
<b>MAGNESIUM STEARATE</b> (UNII: 70097M6I30)	
<b>CELLULOSE, MICROCRYSTALLINE</b> (UNII: OP1R32D61U)	
<b>POVIDONE K30</b> (UNII: U725QWY32X)	
<b>PROPYLENE GLYCOL</b> (UNII: 6DC9Q167V3)	
<b>SHELLAC</b> (UNII: 46N107B71O)	
<b>TITANIUM DIOXIDE</b> (UNII: 15FIX9V2JP)	

### Product Characteristics

<b>Color</b>	white	<b>Score</b>	no score
<b>Shape</b>	CAPSULE	<b>Size</b>	16mm
<b>Flavor</b>		<b>Imprint Code</b>	5240;1;mg
<b>Contains</b>			

### Packaging

#	Item Code	Package Description	Marketing Start Date	Marketing End Date
1	NDC:0172-5240-60	100 in 1 BOTTLE; Type 0: Not a Combination Product	04/18/2005	

### Marketing Information

Marketing Category	Application Number or Monograph Citation	Marketing Start Date	Marketing End Date
ANDA	ANDA076468	04/18/2005	

**Labeler** - Teva Pharmaceuticals USA, Inc. (001627975)

Revised: 5/2022

Teva Pharmaceuticals USA, Inc.