

TUSSIN DM MAX NIGHTTIME- dextromethorphan hbr, doxylamine succinate solution
Wal-Mart Stores Inc

Equate 44-043

Active ingredients (in each 20 mL)

Dextromethorphan HBr 30 mg
Doxylamine succinate 12.5 mg

Purpose

Cough suppressant
Antihistamine

Uses

- temporarily relieves cough due to minor throat and bronchial irritation as may occur with a cold
- temporarily relieves these symptoms due to hay fever or other upper respiratory allergies:
 - itching of the nose or throat
 - runny nose
 - itchy, watery eyes
 - sneezing
- controls the impulse to cough to help you sleep

Warnings

Do not use

if you are now taking a prescription monoamine oxidase inhibitor (MAOI) (certain drugs for depression, psychiatric or emotional conditions, or Parkinson's disease), or for 2 weeks after stopping the MAOI drug. If you do not know if your prescription drug contains an MAOI, ask a doctor or pharmacist before taking this product.

Ask a doctor before use if you have

- a cough that occurs with too much phlegm (mucus)
- difficulty in urination due to enlargement of the prostate gland
- glaucoma
- a breathing problem or persistent or chronic cough as occurs with smoking, asthma, chronic bronchitis, or emphysema

Ask a doctor or pharmacist before use if you are

taking sedatives or tranquilizers.

When using this product

- marked drowsiness may occur
- avoid alcoholic drinks
- alcohol, sedatives, and tranquilizers may increase drowsiness
- use caution when driving a motor vehicle or operating machinery
- excitability may occur, especially in children

Stop use and ask a doctor if

cough persists more than 7 days, tends to recur, or is accompanied by a fever, rash, or persistent headache. These could be signs of a serious condition.

If pregnant or breast-feeding,

ask a health professional before use.

Keep out of reach of children.

In case of overdose, get medical help or contact a Poison Control Center right away

Directions

- **do not take more than directed**
- do not take more than 4 doses in any 24-hour period
- mL = milliliter
- only use the dose cup provided
- adults and children 12 years and over: 20 mL in dosing cup
- provided every 6 hours
- children under 12 years: do not use

Other information

- **each 20 mL contains:** sodium 14 mg
- store at 25°C (77°F); excursions permitted between 15°C-30°C (59°F-86°F)
- see end flap for expiration date and lot number

Inactive ingredients

anhydrous citric acid, FD&C blue #1, FD&C red #40, flavors, glycerin, high fructose corn syrup, polyethylene glycol, propylene glycol, purified water, sodium benzoate, sodium chloride, sodium citrate dihydrate, sucralose, sugar, xanthan gum

Questions or comments?

1-888-287-1915

Principal Display Panel

equate™

NDC 49035-943-19

Compare to
Robitussin®
Maximum Strength
Nighttime
Cough DM Active
Ingredients†

Maximum Strength

Nighttime

Tussin DM Max

Dextromethorphan HBr -
Cough Suppressant
Doxylamine Succinate -
Antihistamine

Nighttime Cough DM

Relief of:

- Cough
- Itchy throat
- Runny nose

Ages 12 +

Oral Solution

Dosage cup included

8 FL OZ (237 mL)

**TAMPER EVIDENT: DO NOT USE IF IMPRINTED
SAFETY SEAL UNDER CAP IS BROKEN OR MISSING**

**TAMPER EVIDENT: DO NOT USE IF
PRINTED NECK WRAP IS BROKEN
OR MISSING**

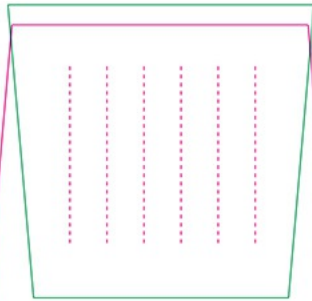
PARENTS:

**Learn about teen medicine abuse
www.StopMedicineAbuse.org**

Satisfaction guaranteed – Or we'll replace it or give
you your money back. For questions or comments
or to report an undesired reaction or side effect,
please call **1-888-287-1915**.

**DISTRIBUTED BY: Walmart Inc.,
Bentonville, AR 72716**

†This product is not manufactured or distributed by Wyeth
LLC, owner of the registered trademark Robitussin®
Maximum Strength Nighttime Cough DM.
50844 REV0123A04319



equate™

Maximum Strength

**Nighttime
Tussin DM Max**

Dextromethorphan HBr -
Cough Suppressant
Doxylamine Succinate -
Antihistamine
Nighttime Cough DM

NX 4935-619

NX 4935-619

KEEP OUTER PACKAGE FOR COMPLETE PRODUCT INFORMATION

Drug Facts

Active ingredients (in each 20 mL) Purpose
Dextromethorphan HBr 30 mg Cough suppressant
Doxylamine succinate 12.5 mg Antihistamine

Uses

- temporarily relieves cough due to minor throat and bronchial irritation as may occur with a cold
- temporarily relieves these symptoms due to hay fever or other upper respiratory allergies:
 - itching of the nose or throat
 - runny nose
 - itchy, watery eyes
 - sneezing
- controls the impulse to cough to help you sleep

Warnings

Do not use if you are now taking a prescription monoamine oxidase inhibitor (MAOI) (certain drugs for depression, psychiatric or emotional conditions, or Parkinson's disease), or for 2 weeks after stopping the MAOI drug. If you do not know if your prescription drug contains an MAOI, ask a doctor or pharmacist before taking this product.

Ask a doctor before use if you have

- a cough that occurs with too much phlegm (mucus)
- difficulty in urination due to enlargement of the prostate gland
- glaucoma
- a breathing problem or persistent or chronic cough as occurs with smoking, asthma, chronic bronchitis, or emphysema

Ask a doctor or pharmacist before use if you are taking sedatives or tranquilizers.

When using this product

- marked drowsiness may occur
- avoid alcoholic drinks
- alcohol, sedatives, and tranquilizers may increase drowsiness
- use caution when driving a motor vehicle or operating machinery
- excitability may occur, especially in children

Step use and ask a doctor if cough persists more than 7 days, tends to recur, or is accompanied by a fever, rash, or persistent headache. These could be signs of a serious condition.

If pregnant or breast-feeding, ask a health professional before use.

Keep out of reach of children. In case of overdose, get medical help or contact a Poison Control Center right away.

Directions

- do not take more than directed
- do not take more than 4 doses in any 24-hour period
- mL = milliliter
- only use the dose cup provided
- adults and children 12 years and over: 20 mL in dosing cup provided every 6 hours
- children under 12 years: do not use

Drug Facts (continued)

Other information

- each 20 mL contains: sodium 14 mg
- store at 25°C (77°F); excursions permitted between 15°-30°C (59°-86°F)
- see end flap for expiration date and lot number

Inactive ingredients anhydrous citric acid, FD&C blue #1, FD&C red #40, flavors, glycerin, high fructose corn syrup, polyethylene glycol, propylene glycol, purified water, sodium benzoate, sodium chloride, sodium citrate dihydrate, sucralose, sugar, xanthan gum

Questions or comments? 1-888-287-1915



Satisfaction guaranteed - Or we'll replace it or give you your money back. For questions or comments or to report an undesired reaction or side effect, please call 1-888-287-1915.

DISTRIBUTED BY: Walmart Inc., Bentonville, AR 72716

*This product is not manufactured or distributed by GlaxoSmithKline Consumer Healthcare Holdings (US) LLC, owner of the registered trademark Robitussin® Maximum Strength Nighttime Cough DM. 50844 REV0123A04319

PARENTS:
Learn about teen medicine abuse
www.StopMedicineAbuse.org

TAMPER EVIDENT: DO NOT USE IF IMPRINTED SAFETY SEAL UNDER CAP IS BROKEN OR MISSING

TAMPER EVIDENT: DO NOT USE IF PRINTED NECK WRAP IS BROKEN OR MISSING



equate™

equate™

Compare to Robitussin® Maximum Strength Nighttime Cough DM Active Ingredients*

Compare to Robitussin® Maximum Strength Nighttime Cough DM Active Ingredients*

Maximum Strength

**Nighttime
Tussin DM Max**

Dextromethorphan HBr -
Cough Suppressant
Doxylamine Succinate -
Antihistamine
Nighttime Cough DM
Oral Solution

Relief of:

- Cough
- Itchy throat
- Runny nose

Ages 12+

8 FL OZ (237 mL)



Dose cup included

Maximum Strength

**Nighttime
Tussin DM Max**

Dextromethorphan HBr -
Cough Suppressant
Doxylamine Succinate -
Antihistamine
Nighttime Cough DM
Oral Solution

Relief of:

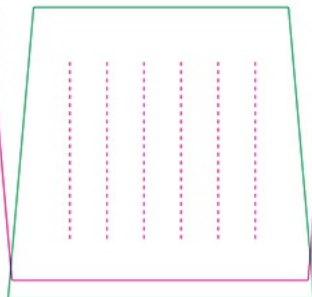
- Cough
- Itchy throat
- Runny nose

Ages 12+

8 FL OZ (237 mL)



Dose cup included



B-2203-043-19
REV0123A04319



No Print/No Varnish
Lot and Expiration No.

Equate 44-043

TUSSIN DM MAX NIGHTTIME

dextromethorphan hbr, doxylamine succinate solution

Product Information

Product Type	HUMAN OTC DRUG	Item Code (Source)	NDC:49035-943
Route of Administration	ORAL		

Active Ingredient/Active Moiety

Ingredient Name	Basis of Strength	Strength
DEXTROMETHORPHAN HYDROBROMIDE (UNII: 9D2RTI9KYH) (DEXTROMETHORPHAN - UNII:7355X3ROTS)	DEXTROMETHORPHAN HYDROBROMIDE	30 mg in 20 mL
DOXYLAMINE SUCCINATE (UNII: V9BI9B5Y12) (DOXYLAMINE - UNII:95QB77JKPL)	DOXYLAMINE SUCCINATE	12.5 mg in 20 mL

Inactive Ingredients

Ingredient Name	Strength
ANHYDROUS CITRIC ACID (UNII: XF417D3PSL)	
FD&C BLUE NO. 1 (UNII: H3R47K3TBD)	
FD&C RED NO. 40 (UNII: WZB9127XOA)	
GLYCERIN (UNII: PDC6A3C0OX)	
HIGH FRUCTOSE CORN SYRUP (UNII: XY6UN3QB6S)	
POLYETHYLENE GLYCOL, UNSPECIFIED (UNII: 3WJQ05DW1A)	
PROPYLENE GLYCOL (UNII: 6DC9Q167V3)	
WATER (UNII: 059QF0KO0R)	
SODIUM BENZOATE (UNII: OJ245FE5EU)	
SODIUM CHLORIDE (UNII: 451W47IQ8X)	
TRISODIUM CITRATE DIHYDRATE (UNII: B22547B95K)	
SUCRALOSE (UNII: 96K6UQ3ZD4)	
SUCROSE (UNII: C151H8M554)	
XANTHAN GUM (UNII: TTV12P4NEE)	

Product Characteristics

Color	red (Maroon)	Score	
Shape		Size	
Flavor	MENTHOL, BERRY	Imprint Code	
Contains			

Packaging

#	Item Code	Package Description	Marketing Start Date	Marketing End Date
1	NDC:49035-943-19	1 in 1 CARTON	08/15/2018	
1		237 mL in 1 BOTTLE; Type 0: Not a Combination Product		

Marketing Information

Marketing Category	Application Number or Monograph Citation	Marketing Start Date	Marketing End Date

OTC Monograph Drug	M012	08/15/2018	
--------------------	------	------------	--

Labeler - Wal-Mart Stores Inc (051957769)

Establishment

Name	Address	ID/FEI	Business Operations
LNK International, Inc.		967626305	manufacture(49035-943) , pack(49035-943)

Revised: 4/2024

Wal-Mart Stores Inc