

BIKTARVY- bicitegravir sodium, emtricitabine, and tenofovir alafenamide fumarate tablet
Gilead Sciences, Inc.

HIGHLIGHTS OF PRESCRIBING INFORMATION

These highlights do not include all the information needed to use BIKTARVY safely and effectively. See full prescribing information for BIKTARVY.

BIKTARVY® (bicitegravir, emtricitabine, and tenofovir alafenamide) tablets, for oral use
Initial U.S. Approval: 2018

WARNING: POST TREATMENT ACUTE EXACERBATION OF HEPATITIS B

See full prescribing information for complete boxed warning.

Severe acute exacerbations of hepatitis B have been reported in patients with HIV-1 and HBV who have discontinued products containing emtricitabine (FTC) and/or tenofovir disoproxil fumarate (TDF), and may occur with discontinuation of BIKTARVY. Closely monitor hepatic function in these patients. If appropriate, anti-hepatitis B therapy may be warranted. (5.1)

RECENT MAJOR CHANGES

Indications and Usage (1)

07/2025

INDICATIONS AND USAGE

BIKTARVY is a three-drug combination of bicitegravir (BIC), a human immunodeficiency virus type 1 (HIV-1) integrase strand transfer inhibitor (INSTI), and emtricitabine (FTC) and tenofovir alafenamide (TAF), both HIV-1 nucleoside analog reverse transcriptase inhibitors (NRTIs), and is indicated as a complete regimen for the treatment of HIV-1 infection in adults and pediatric patients weighing at least 14 kg:

- with no antiretroviral treatment history or
- with an antiretroviral treatment history and not virologically suppressed, with no known or suspected substitutions associated with resistance to the integrase strand inhibitor class, emtricitabine, or tenofovir, or
- to replace the current antiretroviral regimen in those who are virologically suppressed (HIV-1 RNA less than 50 copies per mL) on a stable antiretroviral regimen with no known or suspected substitutions associated with resistance to bicitegravir or tenofovir. (1)

DOSAGE AND ADMINISTRATION

- Testing: Prior to or when initiating BIKTARVY test for hepatitis B virus infection. Prior to or when initiating BIKTARVY, and during treatment, assess serum creatinine, estimated creatinine clearance, urine glucose, and urine protein in all patients as clinically appropriate. In patients with chronic kidney disease, also assess serum phosphorus. (2.1)
- Recommended dosage in adults and pediatric patients weighing at least 25 kg, or virologically-suppressed adults with estimated creatinine clearance below 15 mL/min receiving chronic hemodialysis: One tablet containing 50 mg BIC, 200 mg FTC, and 25 mg TAF taken once daily with or without food. (2.2)
- Recommended dosage in pediatric patients weighing at least 14 kg to less than 25 kg: One tablet containing 30 mg BIC, 120 mg FTC, and 15 mg TAF taken once daily with or without food. (2.3)
- Recommended dosage in pregnant individuals who are virologically-suppressed (HIV-1 RNA less than 50 copies per mL) on a stable antiretroviral regimen with no known substitutions associated with resistance to the individual components of BIKTARVY: One tablet containing 50 mg BIC, 200 mg FTC, and 25 mg TAF taken orally once daily with or without food. (2.4)
- Renal impairment: BIKTARVY is not recommended in patients with estimated creatinine clearance of 15 to below 30 mL/min, or below 15 mL/min who are not receiving chronic hemodialysis, or below 15 mL/min who have no antiretroviral treatment history. (2.5)
- Hepatic impairment: BIKTARVY is not recommended in patients with severe hepatic impairment. (2.6)

-----**DOSAGE FORMS AND STRENGTHS**-----

Tablets: 50 mg of BIC, 200 mg of FTC, and 25 mg of TAF. (3)

Tablets: 30 mg of BIC, 120 mg of FTC, and 15 mg of TAF. (3)

-----**CONTRAINDICATIONS**-----

BIKTARVY is contraindicated to be co-administered with:

- dofetilide. (4)
- rifampin. (4)

-----**WARNINGS AND PRECAUTIONS**-----

- Immune reconstitution syndrome: May necessitate further evaluation and treatment. (5.3)
- New onset or worsening renal impairment: Assess serum creatinine, estimated creatinine clearance, urine glucose and urine protein when initiating BIKTARVY and during therapy as clinically appropriate in all patients. Also assess serum phosphorus in patients with chronic kidney disease. (5.4)
- Lactic acidosis/severe hepatomegaly with steatosis: Discontinue treatment in patients who develop symptoms or laboratory findings suggestive of lactic acidosis or pronounced hepatotoxicity. (5.5)

-----**ADVERSE REACTIONS**-----

Most common adverse reactions (incidence greater than or equal to 5%, all grades) are diarrhea, nausea, and headache. (6.1)

To report SUSPECTED ADVERSE REACTIONS, contact Gilead Sciences, Inc. at 1-800-GILEAD-5 or FDA at 1-800-FDA-1088 or www.fda.gov/medwatch.

-----**DRUG INTERACTIONS**-----

- Because BIKTARVY is a complete regimen, coadministration with other antiretroviral medications for the treatment of HIV-1 infection is not recommended. (7.1)
- Consult the Full Prescribing Information prior to and during treatment for important drug interactions. (4, 5.2, 7, 12.3)

-----**USE IN SPECIFIC POPULATIONS**-----

- Pediatrics: Not recommended for patients weighing less than 14 kg. (8.4)

See 17 for PATIENT COUNSELING INFORMATION and FDA-approved patient labeling.

Revised: 3/2026

FULL PRESCRIBING INFORMATION: CONTENTS*

WARNING: POST TREATMENT ACUTE EXACERBATION OF HEPATITIS B

1 INDICATIONS AND USAGE

2 DOSAGE AND ADMINISTRATION

2.1 Testing When Initiating and During Treatment with BIKTARVY

2.2 Recommended Dosage in Adults and Pediatric Patients Weighing at Least 25 kg

2.3 Recommended Dosage in Pediatric Patients Weighing at Least 14 kg to Less than 25 kg

2.4 Recommended Dosage in Pregnant Individuals

2.5 Not Recommended in Patients with Severe Renal Impairment

2.6 Not Recommended in Patients with Severe Hepatic Impairment

3 DOSAGE FORMS AND STRENGTHS

4 CONTRAINDICATIONS

5 WARNINGS AND PRECAUTIONS

5.1 Severe Acute Exacerbation of Hepatitis B in Patients with HIV-1 and HBV

5.2 Risk of Adverse Reactions or Loss of Virologic Response Due to Drug Interactions

5.3 Immune Reconstitution Syndrome

- 5.4 New Onset or Worsening Renal Impairment
- 5.5 Lactic Acidosis/Severe Hepatomegaly with Steatosis

6 ADVERSE REACTIONS

- 6.1 Clinical Trials Experience
- 6.2 Postmarketing Experience

7 DRUG INTERACTIONS

- 7.1 Other Antiretroviral Medications
- 7.2 Potential for BIKTARVY to Affect Other Drugs
- 7.3 Potential Effect of Other Drugs on One or More Components of BIKTARVY
- 7.4 Drugs Affecting Renal Function
- 7.5 Established and Potentially Significant Drug Interactions
- 7.6 Drugs without Clinically Significant Interactions with BIKTARVY

8 USE IN SPECIFIC POPULATIONS

- 8.1 Pregnancy
- 8.2 Lactation
- 8.4 Pediatric Use
- 8.5 Geriatric Use
- 8.6 Renal Impairment
- 8.7 Hepatic Impairment

10 OVERDOSAGE

11 DESCRIPTION

12 CLINICAL PHARMACOLOGY

- 12.1 Mechanism of Action
- 12.2 Pharmacodynamics
- 12.3 Pharmacokinetics
- 12.4 Microbiology

13 NONCLINICAL TOXICOLOGY

- 13.1 Carcinogenesis, Mutagenesis, Impairment of Fertility
- 13.2 Animal Toxicology and/or Pharmacology

14 CLINICAL STUDIES

- 14.1 Description of Clinical Trials
- 14.2 Clinical Trial Results in Adults with HIV-1 and No Antiretroviral Treatment History
- 14.3 Use in Individuals with an Antiretroviral Treatment History and Not Virologically-Suppressed
- 14.4 Clinical Trial Results in Adults with Virologically-Suppressed HIV-1 Who Switched to BIKTARVY
- 14.5 Clinical Trial Results in Pediatric Participants with HIV-1

16 HOW SUPPLIED/STORAGE AND HANDLING

17 PATIENT COUNSELING INFORMATION

* Sections or subsections omitted from the full prescribing information are not listed.

FULL PRESCRIBING INFORMATION

WARNING: POST TREATMENT ACUTE EXACERBATION OF HEPATITIS B

Severe acute exacerbations of hepatitis B have been reported in patients with HIV-1 and HBV who have discontinued products containing emtricitabine (FTC) and/or tenofovir disoproxil fumarate (TDF), and may occur with discontinuation of BIKTARVY.

Closely monitor hepatic function with both clinical and laboratory follow-up for at least several months in patients with HIV-1 and HBV who discontinue BIKTARVY. If appropriate, anti-hepatitis B therapy may be warranted [see *Warnings and Precautions (5.1)*].

1 INDICATIONS AND USAGE

BIKTARVY is indicated as a complete regimen for the treatment of human immunodeficiency virus type 1 (HIV-1) infection in adults and pediatric patients weighing at least 14 kg:

- with no antiretroviral treatment history, or
- with an antiretroviral treatment history and not virologically suppressed, with no known or suspected substitutions associated with resistance to the integrase strand inhibitor class, emtricitabine, or tenofovir, or
- to replace the current antiretroviral regimen in those who are virologically-suppressed (HIV-1 RNA less than 50 copies per mL) on a stable antiretroviral regimen with no known or suspected substitutions associated with resistance to bictegravir or tenofovir [see *Dosage and Administration (2.4)*, and *Use in Specific Populations (8.1)*].

2 DOSAGE AND ADMINISTRATION

2.1 Testing When Initiating and During Treatment with BIKTARVY

Prior to or when initiating BIKTARVY, test patients for hepatitis B virus infection [see *Warnings and Precautions (5.1)*].

Prior to or when initiating BIKTARVY, and during treatment with BIKTARVY, assess serum creatinine, estimated creatinine clearance, urine glucose and urine protein in all patients as clinically appropriate. In patients with chronic kidney disease, also assess serum phosphorus [see *Warnings and Precautions (5.4)*].

2.2 Recommended Dosage in Adults and Pediatric Patients Weighing at Least 25 kg

BIKTARVY is a three-drug fixed dose combination product containing bictegravir (BIC), emtricitabine (FTC), and tenofovir alafenamide (TAF). The recommended dosage of BIKTARVY is one tablet containing 50 mg of BIC, 200 mg of FTC, and 25 mg of TAF taken orally once daily with or without food in [see *Dosage and Administration (2.4)*]:

- adults and pediatric patients weighing at least 25 kg with an estimated creatinine clearance greater than or equal to 30 mL/min; or
- virologically-suppressed adults with an estimated creatinine clearance below 15 mL/min who are receiving chronic hemodialysis. On days of hemodialysis, administer

the daily dose of BIKTARVY after completion of hemodialysis treatment [see *Use in Specific Populations (8.4, 8.6), and Clinical Pharmacology (12.3)*].

2.3 Recommended Dosage in Pediatric Patients Weighing at Least 14 kg to Less than 25 kg

The recommended dosage of BIKTARVY is one tablet containing 30 mg of BIC, 120 mg of FTC, and 15 mg of TAF taken orally once daily with or without food in:

- pediatric patients weighing at least 14 kg to less than 25 kg with an estimated creatinine clearance greater than or equal to 30 mL/min [see *Use in Specific Populations (8.4, 8.6), and Clinical Pharmacology (12.3)*].

For children unable to swallow a whole tablet, the tablet can be split and each part taken separately as long as all parts are ingested within approximately 10 minutes.

2.4 Recommended Dosage in Pregnant Individuals

The recommended dosage of BIKTARVY in pregnant individuals is one tablet containing 50 mg of BIC, 200 mg of FTC, and 25 mg of TAF taken orally once daily with or without food in pregnant individuals who are virologically-suppressed (HIV-1 RNA less than 50 copies per mL) on a stable antiretroviral regimen with no known substitutions associated with resistance to any of the individual components of BIKTARVY. Lower exposures of BIKTARVY were observed during pregnancy; therefore, viral load should be monitored closely [see *Drug Interactions (7.5), Use in Specific Populations (8.1), and Clinical Pharmacology (12.3)*].

2.5 Not Recommended in Patients with Severe Renal Impairment

BIKTARVY is not recommended in patients with [see *Dosage and Administration (2.2, 2.3), and Use in Specific Populations (8.6)*]:

- severe renal impairment (estimated creatinine clearance of 15 to below 30 mL/min); or
- end stage renal disease (ESRD; estimated creatinine clearance below 15 mL/min who are not receiving chronic hemodialysis; or
- no antiretroviral treatment history and ESRD who are receiving chronic hemodialysis.

2.6 Not Recommended in Patients with Severe Hepatic Impairment

BIKTARVY is not recommended in patients with severe hepatic impairment (Child-Pugh Class C) [see *Use in Specific Populations (8.7), and Clinical Pharmacology (12.3)*].

3 DOSAGE FORMS AND STRENGTHS

BIKTARVY tablets are available in two dose strengths:

- 50 mg/200 mg/25 mg tablets: 50 mg of bicitgravir (BIC) (equivalent to 52.5 mg of bicitgravir sodium), 200 mg of emtricitabine (FTC), and 25 mg of tenofovir alafenamide (TAF) (equivalent to 28 mg of tenofovir alafenamide fumarate). These tablets are purplish brown, capsule-shaped, film-coated, and debossed with “GSI” on one side and “9883” on the other side.
- 30 mg/120 mg/15 mg tablets: 30 mg of BIC (equivalent to 31.5 mg of bicitgravir sodium), 120 mg of FTC, and 15 mg of TAF (equivalent to 16.8 mg of tenofovir

alafenamide fumarate). These tablets are pink, capsule-shaped, film-coated, and either debossed with “GSI” on one side and “B” on the other side; or with a non-functional bisecting score line on one side and “BVY” on the other side.

4 CONTRAINDICATIONS

BIKTARVY is contraindicated to be co-administered with:

- dofetilide due to the potential for increased dofetilide plasma concentrations and associated serious and/or life-threatening events [see *Drug Interactions (7.5)*].
- rifampin due to decreased BIC plasma concentrations, which may result in the loss of therapeutic effect and development of resistance to BIKTARVY [see *Drug Interactions (7.5)*].

5 WARNINGS AND PRECAUTIONS

5.1 Severe Acute Exacerbation of Hepatitis B in Patients with HIV-1 and HBV

Patients with HIV-1 should be tested for the presence of chronic hepatitis B virus (HBV) before or when initiating antiretroviral therapy [see *Dosage and Administration (2.1)*].

Severe acute exacerbations of hepatitis B (e.g., liver decompensation and liver failure) have been reported in patients with HIV-1 and HBV who have discontinued products containing FTC and/or tenofovir disoproxil fumarate (TDF), and may occur with discontinuation of BIKTARVY. Patients with HIV-1 and HBV who discontinue BIKTARVY should be closely monitored with both clinical and laboratory follow-up for at least several months after stopping treatment. If appropriate, anti-hepatitis B therapy may be warranted, especially in patients with advanced liver disease or cirrhosis, since post-treatment exacerbation of hepatitis may lead to hepatic decompensation and liver failure.

5.2 Risk of Adverse Reactions or Loss of Virologic Response Due to Drug Interactions

The concomitant use of BIKTARVY with certain other drugs may result in known or potentially significant drug interactions, some of which may lead to [see *Contraindications (4)*, and *Drug Interactions (7.5)*]:

- Loss of therapeutic effect of BIKTARVY and possible development of resistance.
- Possible clinically significant adverse reactions from greater exposures of concomitant drugs.

See Table 3 for steps to prevent or manage these possible and known significant drug interactions, including dosing recommendations. Consider the potential for drug interactions prior to and during BIKTARVY therapy; review concomitant medications during BIKTARVY therapy; and monitor for the adverse reactions associated with the concomitant drugs.

5.3 Immune Reconstitution Syndrome

Immune reconstitution syndrome has been reported in patients treated with combination antiretroviral therapy. During the initial phase of combination antiretroviral treatment, patients whose immune system responds may develop an inflammatory response to indolent or residual opportunistic infections [such as *Mycobacterium avium*

infection, cytomegalovirus, *Pneumocystis jirovecii* pneumonia (PCP), or tuberculosis], which may necessitate further evaluation and treatment.

Autoimmune disorders (such as Graves' disease, polymyositis, Guillain-Barré syndrome, and autoimmune hepatitis) have also been reported to occur in the setting of immune reconstitution; however, the time to onset is more variable, and can occur many months after initiation of treatment.

5.4 New Onset or Worsening Renal Impairment

Postmarketing cases of renal impairment, including acute renal failure, proximal renal tubulopathy (PRT), and Fanconi syndrome, have been reported with TAF-containing products; while most of these cases were characterized by potential confounders that may have contributed to the reported renal events, it is also possible these factors may have predisposed patients to tenofovir-related adverse events [see *Adverse Reactions (6.1, 6.2)*]. BIKTARVY is not recommended in patients with severe renal impairment (estimated creatinine clearance of 15 to below 30 mL/min), or patients with ESRD (estimated creatinine clearance below 15 mL/min) who are not receiving chronic hemodialysis, or patients with no antiretroviral treatment history and ESRD who are receiving chronic hemodialysis [see *Dosage and Administration (2.4)*, and *Use in Specific Populations (8.6)*].

Patients taking tenofovir prodrugs who have impaired renal function and those taking nephrotoxic agents including non-steroidal anti-inflammatory drugs are at increased risk of developing renal-related adverse reactions.

Prior to or when initiating BIKTARVY, and during treatment with BIKTARVY, assess serum creatinine, estimated creatinine clearance, urine glucose and urine protein in all patients as clinically appropriate. In patients with chronic kidney disease, also assess serum phosphorus. Discontinue BIKTARVY in patients who develop clinically significant decreases in renal function or evidence of Fanconi syndrome.

5.5 Lactic Acidosis/Severe Hepatomegaly with Steatosis

Lactic acidosis and severe hepatomegaly with steatosis, including fatal cases, have been reported with the use of nucleoside analogs, including emtricitabine, a component of BIKTARVY, and tenofovir DF, another prodrug of tenofovir, alone or in combination with other antiretrovirals. Treatment with BIKTARVY should be suspended in any patient who develops clinical or laboratory findings suggestive of lactic acidosis or pronounced hepatotoxicity (which may include hepatomegaly and steatosis even in the absence of marked transaminase elevations).

6 ADVERSE REACTIONS

The following adverse reactions are discussed in other sections of the labeling:

- Severe Acute Exacerbations of Hepatitis B [see *Warnings and Precautions (5.1)*].
- Immune Reconstitution Syndrome [see *Warnings and Precautions (5.3)*].
- New Onset or Worsening Renal Impairment [see *Warnings and Precautions (5.4)*].
- Lactic Acidosis/Severe Hepatomegaly with Steatosis [see *Warnings and Precautions (5.5)*].

6.1 Clinical Trials Experience

Because clinical trials are conducted under widely varying conditions, adverse reaction rates observed in the clinical trials of a drug cannot be directly compared to rates in the clinical trials of another drug and may not reflect the rates observed in practice.

Clinical Trials in Adults with No Antiretroviral Treatment History

The primary safety assessment of BIKTARVY was based on data from two randomized, double-blind, active-controlled trials, Trial 1489 and Trial 1490, that enrolled 1274 adult participants with HIV-1 and no antiretroviral treatment history through Week 144. After Week 144, participants received open-label BIKTARVY in an optional extension phase for an additional 96 weeks (end of study). A total of 634 and 1025 participants received one tablet of BIKTARVY once daily during the double-blind (Week 144) and extension phases, respectively [see *Clinical Studies (14.2)*].

The most common adverse reactions (all Grades) reported in at least 5% of participants in the BIKTARVY group in either Trial 1489 or Trial 1490 were diarrhea, nausea, and headache. The proportion of participants who discontinued treatment through Week 144 with BIKTARVY, abacavir [ABC]/dolutegravir [DTG]/ lamivudine [3TC]), or DTG + FTC/TAF, due to adverse events, regardless of severity, was 1%, 2%, and 2%, respectively. Table 1 displays the frequency of adverse reactions (all Grades) greater than or equal to 2% in the BIKTARVY group.

Table 1 Adverse Reactions* (All Grades) Reported in \geq 2% of Adults with HIV-1 and No Antiretroviral Treatment History Receiving BIKTARVY in Trials 1489 or 1490 (Week 144 analysis)

Adverse Reactions	Trial 1489		Trial 1490	
	BIKTARVY N=314	ABC/DTG/3TC N=315	BIKTARVY N=320	DTG + FTC/TAF N=325
Diarrhea	6%	4%	3%	3%
Nausea	6%	18%	3%	5%
Headache	5%	5%	4%	3%
Fatigue	3%	4%	2%	2%
Abnormal dreams	3%	3%	<1%	1%
Dizziness	2%	3%	2%	1%
Insomnia	2%	3%	2%	<1%
Abdominal distention	2%	2%	1%	2%

* Frequencies of adverse reactions are based on all adverse events attributed to trial drugs by the investigator. No adverse reactions of Grade 2 or higher occurred in > 1% of participants treated with BIKTARVY.

Additional adverse reactions (all Grades) occurring in less than 2% of participants administered BIKTARVY in Trials 1489 and 1490 included vomiting, flatulence, dyspepsia, abdominal pain, rash, and depression.

Suicidal ideation, suicide attempt, and depression suicidal occurred in 2% of participants administered BIKTARVY; these events occurred primarily in participants with a

preexisting history of depression, prior suicide attempt or psychiatric illness.

The majority (84%) of adverse events associated with BIKTARVY were Grade 1.

Adverse reactions in the open-label extension phases of Trials 1489 and 1490 were similar to those observed in participants administered BIKTARVY in the Week 144 analysis.

Clinical Trials in Adults with Virologically-Suppressed HIV-1

The safety of BIKTARVY in virologically-suppressed adults was based on Week 48 data from 282 participants in a randomized, double-blind, active-controlled trial (Trial 1844) in which virologically-suppressed participants were switched from either DTG + ABC/3TC or ABC/DTG/3TC to BIKTARVY; Week 48 data from 290 participants in an open-label, active-controlled trial in which virologically-suppressed participants were switched from a regimen containing atazanavir (ATV) (given with cobicistat or ritonavir) or darunavir (DRV) (given with cobicistat or ritonavir) plus either FTC/TDF or ABC/3TC, to BIKTARVY (Trial 1878); and Week 48 data from a randomized, double-blind active-controlled trial in which 284 virologically-suppressed participants were switched from DTG plus either FTC/TAF or FTC/TDF, to BIKTARVY (Trial 4030). Overall, the safety profile in virologically-suppressed adult participants in Trials 1844, 1878, and 4030 was similar to that in participants with no antiretroviral treatment history [see *Clinical Studies (14.3)*].

Clinical Trial in Adults with End Stage Renal Disease (ESRD) Receiving Chronic Hemodialysis

The safety of FTC and TAF (components of BIKTARVY) was evaluated in a single arm, open-label trial (Trial 1825) in virologically-suppressed adults with ESRD (estimated creatinine clearance of less than 15 mL/min) on chronic hemodialysis treated with FTC+TAF in combination with elvitegravir and cobicistat as a fixed-dose combination tablet for 96 weeks (N=55). The most commonly reported adverse reaction (adverse event assessed as causally related by investigator and all grades) was nausea (7%). Serious adverse events were reported in 65% of participants and the most common serious adverse events were pneumonia (15%), fluid overload (7%), hyperkalemia (11%) and osteomyelitis (7%). Overall 7% of participants permanently discontinued treatment due to an adverse event. In an extension phase of Trial 1825 in which 10 participants switched to BIKTARVY for 48 weeks, the safety findings were similar to those in the initial phase of the open-label trial [see *Use in Specific Populations (8.6)*, and *Clinical Studies (14.3)*].

Laboratory Abnormalities

The frequency of laboratory abnormalities (Grades 3-4) occurring in at least 2% of participants receiving BIKTARVY in Trials 1489 and 1490 are presented in Table 2.

Table 2 Laboratory Abnormalities (Grades 3-4) Reported in ≥ 2% of Participants Receiving BIKTARVY in Trials 1489 or 1490 (Week 144 analysis)

Laboratory Parameter Abnormality*	Trial 1489		Trial 1490	
	BIKTARVY N=314	ABC/DTG/3TC N=315	BIKTARVY N=320	DTG + FTC/TAF N=325
Aspartate aminotransferase (AST)				

Amylase ($>2.0 \times$ ULN)	3%	4%	3%	4%
ALT ($>5.0 \times$ ULN)	2%	2%	3%	1%
AST ($>5.0 \times$ ULN)	5%	3%	2%	3%
Creatine Kinase ($\geq 10.0 \times$ ULN)	8%	8%	6%	4%
Neutrophils ($<750 \text{ mm}^3$)	3%	4%	3%	2%
LDL-cholesterol (fasted) ($>190 \text{ mg/dL}$)	5%	5%	4%	6%
Lipase ($> 3.0 \times$ ULN) [†]	2%	2%	$<1\%$	2%
GGT ($>5.0 \times$ ULN)	2%	2%	1%	1%

ULN = Upper limit of normal

* Frequencies are based on treatment-emergent laboratory abnormalities.

† Lipase test performed only in participants with serum amylase $> 1.5 \times$ ULN.

Changes in Serum Creatinine: BIC has been shown to increase serum creatinine due to inhibition of tubular secretion of creatinine without affecting renal glomerular function [see *Clinical Pharmacology (12.2)*]. Increases in serum creatinine occurred by Week 4 of treatment and remained stable through Week 144. In Trials 1489 and 1490, median (Q1, Q3) serum creatinine increased by 0.11 (0.03, 0.19) mg per dL from baseline to Week 144 in the BIKTARVY group and was similar to the comparator groups who received ABC/DTG/3TC, or DTG + FTC/TAF. There were no discontinuations due to renal adverse events and renal serious adverse events were encountered in less than 1% of participants treated with BIKTARVY through Week 144 in clinical trials.

Changes in Bilirubin: In Trials 1489 and 1490, total bilirubin increases were observed in 17% of participants administered BIKTARVY through Week 144. Increases were primarily Grade 1 (1.0 to $1.5 \times$ ULN) (12%) and Grade 2 (1.5 to $2.5 \times$ ULN) (4%). Graded bilirubin increases in the ABC/DTG/3TC, and DTG + FTC/TAF groups, were 7% and 8%, respectively. Increases were primarily Grade 1 (5% ABC/DTG/3TC and 7% DTG + FTC/TAF) or Grade 2 (2% ABC/DTG/3TC and 2% DTG + FTC/TAF). There were no discontinuations due to hepatic adverse events through Week 144 in BIKTARVY clinical studies.

Clinical Trials in Pediatric Participants

The safety of BIKTARVY was evaluated in participants with virologically-suppressed HIV-1 between the ages of 12 to less than 18 years and weighing at least 35 kg (N=50) through Week 48 (cohort 1), in virologically-suppressed participants between the ages of 6 to less than 12 years and weighing at least 25 kg (N=50) through Week 24 (cohort 2), and in virologically suppressed participants at least 2 years of age and weighing at least 14 to less than 25 kg (N=22) through Week 24 (cohort 3) in an open label clinical trial (Trial 1474) [see *Clinical Studies (14.4)*]. No new adverse reactions or laboratory abnormalities were identified compared to those observed in adults. Adverse reactions were reported in 11% of pediatric participants. The majority (76%) of adverse reactions

were Grade 1. No Grade 3 or 4 adverse reactions were reported. The adverse reaction reported by more than one subject (regardless of severity) was abdominal discomfort (n=2). One subject (1%) had Grade 2 adverse reactions of insomnia and anxiety that led to discontinuation of BIKTARVY. The other adverse reactions that occurred in single participants were similar to those seen in adults.

6.2 Postmarketing Experience

The following events have been identified during post approval use of BIKTARVY or products containing TAF. Because these events are reported voluntarily from a population of uncertain size, it is not always possible to reliably estimate their frequency or establish a causal relationship to drug exposure.

Renal and Urinary Disorders

Acute renal failure, acute tubular necrosis, proximal renal tubulopathy, and Fanconi syndrome

Skin and Subcutaneous Tissue Disorders

Angioedema, Stevens-Johnson syndrome/toxic epidermal necrolysis, and urticaria

Investigations

Weight increased

7 DRUG INTERACTIONS

7.1 Other Antiretroviral Medications

Because BIKTARVY is a complete regimen, coadministration with other antiretroviral medications for the treatment of HIV-1 infection is not recommended [see *Indications and Usage (1)*]. Comprehensive information regarding potential drug-drug interactions with other antiretroviral medications is not provided because the safety and efficacy of concomitant HIV-1 antiretroviral therapy is unknown.

7.2 Potential for BIKTARVY to Affect Other Drugs

BIC inhibits organic cation transporter 2 (OCT2) and multidrug and toxin extrusion transporter 1 (MATE1) *in vitro*. Coadministration of BIKTARVY with drugs that are substrates of OCT2 and MATE1 (e.g., dofetilide) may increase their plasma concentrations (see Table 3).

7.3 Potential Effect of Other Drugs on One or More Components of BIKTARVY

BIC is a substrate of CYP3A and UGT1A1. A drug that is a strong inducer of CYP3A and also an inducer of UGT1A1 can substantially decrease the plasma concentrations of BIC which may lead to loss of therapeutic effect of BIKTARVY and development of resistance [see *Clinical Pharmacology (12.3)*].

The use of BIKTARVY with a drug that is a strong inhibitor of CYP3A and also an inhibitor of UGT1A1 may significantly increase the plasma concentrations of BIC.

TAF is a substrate of P-glycoprotein (P-gp) and breast cancer resistance protein (BCRP).

Co-administration of drugs that inhibit P-gp and BCRP may increase the absorption and plasma concentrations of TAF [see *Clinical Pharmacology (12.3)*]. Co-administration of drugs that induce P-gp activity are expected to decrease the absorption of TAF, resulting in decreased plasma concentration of TAF, which may lead to loss of therapeutic effect of BIKTARVY and development of resistance (see Table 3).

7.4 Drugs Affecting Renal Function

Because FTC and tenofovir are primarily excreted by the kidneys by a combination of glomerular filtration and active tubular secretion, coadministration of BIKTARVY with drugs that reduce renal function or compete for active tubular secretion may increase concentrations of FTC, tenofovir, and other renally eliminated drugs and this may increase the risk of adverse reactions. Some examples of drugs that are eliminated by active tubular secretion include, but are not limited to, acyclovir, cidofovir, ganciclovir, valacyclovir, valganciclovir, aminoglycosides (e.g., gentamicin), and high-dose or multiple NSAIDs [see *Warnings and Precautions (5.4)*].

7.5 Established and Potentially Significant Drug Interactions

Table 3 provides a listing of established or potentially clinically significant drug interactions with recommended prevention or management strategies. The drug interactions described are based on studies conducted with either BIKTARVY, the components of BIKTARVY (BIC, FTC, and TAF) as individual agents, or are drug interactions that may occur with BIKTARVY [see *Contraindications (4)*, *Warnings and Precautions (5.2)*, and *Clinical Pharmacology (12.3)*].

Table 3 Established and Potentially Significant* Drug Interactions: Alteration in Regimen May be Recommended

Concomitant Drug Class: Drug Name	Effect on Concentration†	Clinical Comment
Antiarrhythmics: dofetilide	↑ Dofetilide	Coadministration is contraindicated due to the potential for serious and/or life-threatening events associated with dofetilide therapy [see <i>Contraindications (4)</i>].
Anticonvulsants: carbamazepine‡ oxcarbazepine phenobarbital phenytoin	↓ BIC ↓ TAF	Coadministration with alternative anticonvulsants should be considered.
Antimycobacterials: rifabutin‡ rifampin‡,§ rifapentine	↓ BIC ↓ TAF	Coadministration with rifampin is contraindicated due to the effect of rifampin on the BIC component of BIKTARVY [see <i>Contraindications (4)</i>]. Coadministration with rifabutin or rifapentine is not

		recommended.
Herbal Products: St. John's wort [¶]	↓ BIC ↓ TAF	Coadministration with St. John's wort is not recommended.
Oral medications or supplements containing polyvalent cations (e.g., Mg, Al, Ca, Fe): Calcium or iron supplements [‡] Cation-containing antacids or laxatives [‡] Sucralfate Buffered medications	↓ BIC	<p><u>Antacids containing Al/Mg:</u> BIKTARVY can be taken at least <u>2 hours before</u> or <u>6 hours after</u> taking antacids containing Al/Mg.</p> <p>Routine administration of BIKTARVY together with, or 2 hours after, antacids containing Al/Mg is not recommended.</p> <p><u>Supplements or Antacids containing Calcium or Iron:</u> BIKTARVY and supplements or antacids containing calcium or iron can be taken together with food.</p> <p>Routine administration of BIKTARVY under fasting conditions together with, or 2 hours after, supplements or antacids containing calcium or iron is not recommended.</p> <p><i>In pregnant individuals:</i> <u>Antacids containing Al/Mg:</u> BIKTARVY can be taken at least 2 hours before or 6 hours after antacids containing Al/Mg regardless of food intake.</p> <p><u>Supplements or Antacids containing Calcium or Iron:</u> BIKTARVY and supplements or antacids containing calcium or iron can be taken together with food; but when taken on an empty stomach, BIKTARVY should be taken at least 2 hours before or 6 hours after supplements or antacids containing calcium or iron.</p>
		Refer to the prescribing

Metformin	↑ Metformin	information of metformin for assessing the benefit and risk of concomitant use of BIKTARVY and metformin.
------------------	-------------	---

* Table is not all inclusive.

† ↑ = Increase, ↓ = Decrease.

‡ Drug-drug interaction study was conducted with either BIKTARVY or its components as individual agents.

§ Strong inducer of CYP3A and P-gp, and inducer of UGT1A1.

¶ The induction potency of St. John's wort may vary widely based on preparation.

7.6 Drugs without Clinically Significant Interactions with BIKTARVY

Based on drug interaction studies conducted with BIKTARVY or the components of BIKTARVY, no clinically significant drug interactions have been observed when BIKTARVY is combined with the following drugs: ethinyl estradiol, ledipasvir/sofosbuvir, midazolam, norgestimate, sertraline, sofosbuvir, sofosbuvir/velpatasvir, and sofosbuvir/velpatasvir/voxilaprevir.

8 USE IN SPECIFIC POPULATIONS

8.1 Pregnancy

Pregnancy Exposure Registry

There is a pregnancy exposure registry that monitors pregnancy outcomes in individuals exposed to BIKTARVY during pregnancy. Healthcare providers are encouraged to register patients by calling the Antiretroviral Pregnancy Registry (APR) at 1-800-258-4263.

Risk Summary

Available data from observational studies and the APR with BIC, FTC and TAF use during pregnancy have not established a drug-associated risk of major birth defects, miscarriage or other adverse maternal or fetal outcomes. Reports of pregnant individuals treated with products containing BIC, FTC, or TAF contribute to APR's overall risk assessment for these components. Available data from the APR show no statistically significant difference in the overall risk of major birth defects for BIC, FTC, or TAF compared with the background rate for major birth defects of 2.7% in a U.S. reference population of the Metropolitan Atlanta Congenital Defects Program (MACDP) (see *Data*). The rate of miscarriage is not reported in the APR. The estimated background rate of miscarriage in the clinically recognized pregnancies in the U.S. general population is 15-20%.

BIKTARVY safety has also been evaluated in an open-label trial that demonstrated safety findings that were consistent with other trials in adults (see *Data*).

In animal reproduction studies, no evidence of adverse developmental outcomes was observed with the components of BIKTARVY at exposures that were either not maternally toxic (rabbits) or greater than (rats and mice) those in humans at the recommended human dose (RHD) (see *Data*). During organogenesis, systemic exposures (AUC) to BIC were approximately 36 (rats) and 0.6 times (rabbits), to FTC

were approximately 60 (mice) and 108 times (rabbits), and to TAF were approximately 2 (rats) and 78 times (rabbits) the exposure at the RHD of BIKTARVY. In rat pre/postnatal development studies, maternal systemic exposures (AUC) were 30 times (BIC), 60 times (FTC), and 19 times (TDF) the exposures of each component in humans at the RHD.

Data

Human Data

BIKTARVY was evaluated in an open-label clinical trial of 33 virologically-suppressed (HIV-1 RNA < 50 copies/mL) pregnant adults with HIV-1 and no known substitutions associated with resistance to BIC, FTC, or TAF. Pregnant adults were administered BIKTARVY (containing 50 mg of BIC, 200 mg of FTC and 25 mg of TAF) once daily from the second or third trimester through postpartum. Exposures of BIC, FTC, and TAF were lower during pregnancy as compared to postpartum [see *Clinical Pharmacology* (12.3)]. All 32 adult participants who completed the study maintained viral suppression during pregnancy, at delivery, and through Week 18 postpartum. The median CD4+ cell count at baseline was 558 cells/ μ L, and the median change in CD4+ cell count from baseline to Week 12 postpartum was 159 cells/ μ L. All 29 neonate participants had negative/nondetectable HIV-1 PCR results at birth and/or at 4 to 8 weeks post-birth. The safety findings in this trial were consistent with other trials in adults.

BIKTARVY was only studied in pregnant individuals who were virologically-suppressed, and lower plasma exposures of BIKTARVY were observed during pregnancy compared to post-partum. Therefore, BIKTARVY is recommended in pregnant individuals who are virologically-suppressed on a stable antiretroviral regimen with no known substitutions associated with resistance to any of the individual components of BIKTARVY.

Bictegravir (BIC):

Based on prospective reports to the APR of over 500 exposures to a BIC-containing regimen during pregnancy resulting in live births (including 423 exposed in the first trimester and 113 exposed in the second/third trimester), the prevalence of birth defects in live births was 4.3% (95% CI: 2.5% to 6.6%) and 1.8% (0.2%, 6.2%) following first and second/third trimester exposure, respectively, to a BIC-containing regimen.

Emtricitabine (FTC):

Based on prospective reports to the APR of over 6,500 exposures to FTC-containing regimens during pregnancy resulting in live births (including over 4,800 exposed in the first trimester and over 1,700 exposed in the second/third trimester), the prevalence of birth defects in live births was 2.9% (95% CI: 2.5% to 3.4%) and 2.8% (95% CI: 2.1% to 3.7%) following first and second/third trimester exposure, respectively, to FTC-containing regimens.

Tenofovir Alafenamide (TAF):

Based on prospective reports to the APR of over 1,200 exposures to TAF-containing regimens during pregnancy resulting in live births (including over 1000 exposed in the first trimester and over 200 exposed in the second/third trimester), the prevalence of birth defects in live births was 3.9% (95% CI: 2.8% to 5.2%) and 4.8% (95% CI: 2.5% to 8.3%) following first and second/third trimester exposure, respectively, to TAF-containing regimens.

Methodological limitations of the APR include the use of MACDP as the external

comparator group. The MACDP population is not disease-specific, evaluates individuals and infants from a limited geographic area, and does not include outcomes for births that occurred at less than 20 weeks gestation.

Animal Data

Bictegravir: BIC was administered orally to pregnant rats (5, 30, or 300 mg/kg/day) and rabbits (100, 300, or 1000 mg/kg/day) on gestation days 7 through 17, and 7 through 19, respectively. No adverse embryo-fetal effects were observed in rats and rabbits at BIC exposures (AUC) of up to approximately 36 (rats) and 0.6 (rabbits) times the exposure in humans at the RHD of BIKTARVY. Spontaneous abortion, increased clinical signs [fecal changes, thin body, and cold-to-touch], and decreased body weight were observed at a maternally toxic dose in rabbits (1000 mg/kg/day; approximately 1.4 times higher than human exposure at the RHD).

In a pre/postnatal development study, BIC was administered orally to pregnant rats (up to 300 mg/kg/day) from gestation days 6 to lactation/post-partum day 24. No significant adverse effects were observed in the offspring exposed daily from before birth (*in utero*) through lactation at maternal and pup exposures (AUC) of approximately 30 and 11 times higher, respectively, than human exposures at the RHD.

Emtricitabine: FTC was administered orally to pregnant mice (250, 500, or 1000 mg/kg/day) and rabbits (100, 300, or 1000 mg/kg/day) through organogenesis (on gestation days 6 through 15, and 7 through 19, respectively). No significant toxicological effects were observed in embryo-fetal toxicity studies performed with emtricitabine in mice at exposures approximately 60 times higher and in rabbits at approximately 108 times higher than human exposures at the RHD.

In a pre/postnatal development study with FTC, mice were administered doses up to 1000 mg/kg/day; no significant adverse effects directly related to drug were observed in the offspring exposed daily from before birth (*in utero*) through sexual maturity at daily exposures (AUC) of approximately 60 times higher than human exposures at the RHD.

Tenofovir alafenamide: TAF was administered orally to pregnant rats (25, 100, or 250 mg/kg/day) and rabbits (10, 30, or 100 mg/kg/day) through organogenesis (on gestation days 6 through 17, and 7 through 20, respectively). No adverse embryo-fetal effects were observed in rats and rabbits at TAF exposures of approximately 2 (rats) and 78 (rabbits) times higher than the exposure in humans at the recommended daily dose of BIKTARVY. TAF is rapidly converted to tenofovir; the observed tenofovir exposure in rats and rabbits were 55 (rats) and 86 (rabbits) times higher than human tenofovir exposures at the RHD. Since TAF is rapidly converted to tenofovir and lower tenofovir exposures in rats and mice were observed after TAF administration compared to TDF administration, a pre/postnatal development study in rats was conducted only with TDF. Doses up to 600 mg/kg/day were administered through lactation; no adverse effects were observed in the offspring on gestation day 7 [and lactation day 20] at tenofovir exposures of approximately 12 [19] times higher than the exposures in humans at the RHD of BIKTARVY.

8.2 Lactation

Risk Summary

Data from the published literature report the presence of BIC, FTC, TAF, and tenofovir in human milk. There are no data on the effects of BIC on the breastfed child. Data from

the published literature have not reported adverse effects of FTC or TAF on a breastfed child. There are no data on the effects of BIC, FTC or TAF on milk production.

Potential risks of breastfeeding include: (1) HIV-1 transmission to HIV-1-negative infants; (2) developing viral resistance in HIV-1-positive infants; and (3) adverse reactions in a breastfed infant similar to those seen in adults.

8.4 Pediatric Use

The safety and effectiveness of BIKTARVY have been established as a complete regimen for the treatment of human immunodeficiency virus type 1 (HIV-1) infection in pediatric patients weighing at least 14 kg:

- who have no antiretroviral treatment history, or
- with an antiretroviral treatment history and not virologically suppressed, with no known or suspected substitutions associated with resistance to the integrase strand inhibitor class, emtricitabine, or tenofovir, or
- to replace the current antiretroviral regimen in those who are virologically-suppressed (HIV-1 RNA less than 50 copies per mL) on a stable antiretroviral regimen with no known or suspected resistance to bictegravir or tenofovir [see *Indications and Usage (1)*, and *Dosage and Administration (2.2, 2.3)*].

Use of BIKTARVY in pediatric patients weighing at least 14 kg is supported by the following:

- trials in adults [see *Clinical Studies (14.1, 14.3)*]
- an open-label trial in three age-based cohorts of virologically-suppressed pediatric participants [see *Clinical Studies (14.4)*]
 - Cohort 1: 12 to less than 18 years of age and weighing at least 35 kg receiving BIKTARVY through Week 48 (N=50),
 - Cohort 2: 6 to less than 12 years of age and weighing at least 25 kg receiving BIKTARVY through Week 24 (N=50), and
 - Cohort 3: at least 2 years of age and weighing at least 14 to less than 25 kg through Week 24 (N=22). No pediatric participants 2 years of age were enrolled; of the 6 pediatric participants who were 3 years of age at enrollment, 3 participants weighed between 14 to less than 15 kg.

The safety and efficacy of BIKTARVY in these pediatric participants were similar to that in adults, and there was no clinically significant change in exposure for the components of BIKTARVY [see *Adverse Reactions (6.1)*, *Clinical Pharmacology (12.3)*, and *Clinical Studies (14.4)*].

Safety and effectiveness of BIKTARVY in pediatric patients weighing less than 14 kg have not been established.

8.5 Geriatric Use

Clinical trials in virologically-suppressed participants (Trials 4449, 1844, and 1878) included 111 participants aged 65 years and over who received BIKTARVY, including 86 patients from an open-label, single-arm trial of participants aged 65 years and over who were switched from their previous antiretroviral regimen to BIKTARVY [see *Clinical Studies (14.3)*]. Of the total number of BIKTARVY-treated patients in these trials, 100 (90%) were 65 to 74 years of age, and 11 (10%) were 75 to 84 years of age. No overall differences in safety or effectiveness were observed between elderly participants and

adults between 18 and less than 65 years of age, and other reported clinical experience has not identified differences in responses between the elderly and younger patients, but greater sensitivity of some older individuals cannot be ruled out.

8.6 Renal Impairment

The pharmacokinetics, safety, virologic and immunologic responses of FTC and TAF (components of BIKTARVY) were evaluated in a single arm, open-label trial (Trial 1825) in virologically-suppressed adults with ESRD (estimated creatinine clearance of less than 15 mL/min) on chronic hemodialysis treated with FTC+TAF in combination with elvitegravir and cobicistat as a fixed-dose combination tablet for 96 weeks (N=55). In an extension phase of Trial 1825, 10 virologically-suppressed participants switched to BIKTARVY and all remained virologically suppressed for 48 weeks [see *Adverse Reactions (6.1)*, *Clinical Pharmacology (12.3)*, and *Clinical Studies (14.3)*].

No dosage adjustment of BIKTARVY is recommended in patients with estimated creatinine clearance greater than or equal to 30 mL/min, or in virologically-suppressed adults (estimated creatinine clearance below 15 mL/min) who are receiving chronic hemodialysis. On days of hemodialysis, administer the daily dose of BIKTARVY after completion of hemodialysis treatment [see *Dosage and Administration (2.2)*]

BIKTARVY is not recommended in patients with estimated creatinine clearance of below 30 mL/min, by Cockcroft-Gault, or patients with ESRD (estimated creatinine clearance below 15 mL/min) who are not receiving chronic dialysis, or patients with no antiretroviral treatment history and ESRD who are receiving chronic dialysis, as the safety and/or efficacy of BIKTARVY has not been established in these populations [see *Dosage and Administration (2.4)*, *Warnings and Precautions (5.4)*, and *Clinical Pharmacology (12.3)*].

8.7 Hepatic Impairment

No dosage adjustment of BIKTARVY is recommended in patients with mild (Child-Pugh Class A) or moderate (Child-Pugh Class B) hepatic impairment. BIKTARVY has not been studied in patients with severe hepatic impairment (Child-Pugh Class C). Therefore, BIKTARVY is not recommended for use in patients with severe hepatic impairment [see *Dosage and Administration (2.4)*, and *Clinical Pharmacology (12.3)*].

10 OVERDOSAGE

No data are available on overdose of BIKTARVY in patients. If overdose occurs, monitor the patient for evidence of toxicity. Treatment of overdose with BIKTARVY consists of general supportive measures including monitoring of vital signs as well as observation of the clinical status of the patient.

Hemodialysis treatment removes approximately 30% of the FTC dose over a 3-hour dialysis period starting within 1.5 hours of FTC dosing (blood flow rate of 400 mL/min and a dialysate flow rate of 600 mL/min). It is not known whether FTC can be removed by peritoneal dialysis.

Tenofovir is efficiently removed by hemodialysis with an extraction coefficient of approximately 54%.

11 DESCRIPTION

BIKTARVY (bictegravir, emtricitabine, and tenofovir alafenamide) is a fixed dose combination tablet containing bictegravir (BIC), emtricitabine (FTC), and tenofovir alafenamide (TAF) for oral administration.

- BIC is an integrase strand transfer inhibitor (INSTI).
- FTC, a synthetic nucleoside analog of cytidine, is an HIV nucleoside analog reverse transcriptase inhibitor (HIV NRTI).
- TAF, an HIV NRTI, is converted *in vivo* to tenofovir, an acyclic nucleoside phosphonate (nucleotide) analog of adenosine 5'-monophosphate.

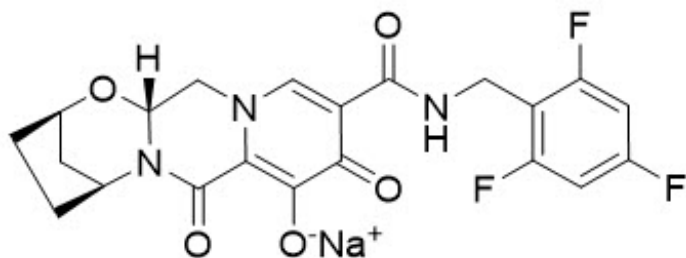
BIKTARVY tablets are available in two dose strengths:

- 50 mg/200 mg/25 mg tablet containing 50 mg of BIC (equivalent to 52.5 mg of bictegravir sodium), 200 mg of FTC, and 25 mg of TAF (equivalent to 28 mg of tenofovir alafenamide fumarate).
- 30 mg/120 mg/15 mg tablet containing 30 mg of BIC (equivalent to 31.5 mg of bictegravir sodium), 120 mg of FTC, and 15 mg of TAF (equivalent to 16.8 mg of tenofovir alafenamide fumarate).

Both dose strengths of BIKTARVY tablets include the following inactive ingredients: croscarmellose sodium, magnesium stearate, and microcrystalline cellulose. The tablets for both dose strengths are film-coated with a coating material containing iron oxide black, iron oxide red, polyethylene glycol, polyvinyl alcohol, talc, and titanium dioxide.

Bictegravir: The chemical name of bictegravir sodium is 2,5-Methanopyrido[1',2':4,5]pyrazino[2,1-*b*][1,3]oxazepine-10-carboxamide, 2,3,4,5,7,9,13,13a-octahydro-8-hydroxy-7,9-dioxo-*N*-[(2,4,6-trifluorophenyl)methyl]-, sodium salt (1:1), (2*R*,5*S*,13*aR*)-.

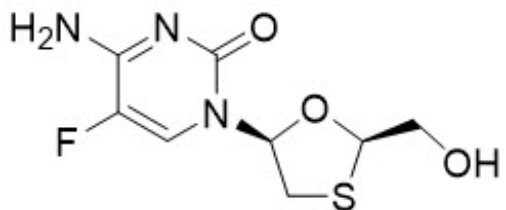
Bictegravir sodium has a molecular formula of $C_{21}H_{17}F_3N_3NaO_5$ and a molecular weight of 471.4 and has the following structural formula:



Bictegravir sodium is an off-white to yellow solid with a solubility of 0.1 mg per mL in water at 20 °C.

Emtricitabine: The chemical name of FTC is 4-amino-5-fluoro-1-(2*R*-hydroxymethyl-1,3-oxathiolan-5*S*-yl)-(1*H*)-pyrimidin-2-one. FTC is the (-)enantiomer of a thio analog of cytidine, which differs from other cytidine analogs in that it has a fluorine in the 5 position.

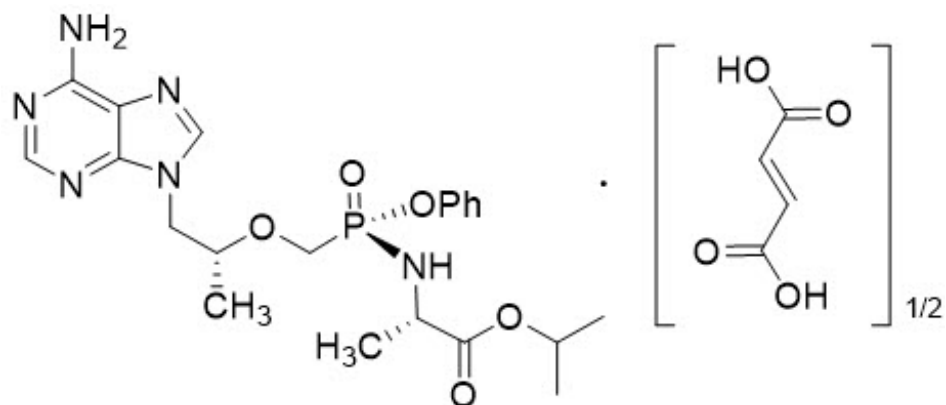
FTC has a molecular formula of $C_8H_{10}FN_3O_3S$ and a molecular weight of 247.2 and has the following structural formula:



FTC is a white to off-white powder with a solubility of approximately 112 mg per mL in water at 25 °C.

Tenofovir alafenamide: The chemical name of tenofovir alafenamide fumarate drug substance is L-alanine, *N*-[(*S*)-[[(1*R*)-2-(6-amino-9*H*-purin-9-yl)-1-methylethoxy]methyl]phenoxyphosphiny]-, 1-methylethyl ester, (*2E*)-2-butenedioate (2:1).

Tenofovir alafenamide fumarate has an empirical formula of $C_{21}H_{29}O_5N_6P \cdot \frac{1}{2}(C_4H_4O_4)$ and a formula weight of 534.5 and has the following structural formula:



Tenofovir alafenamide fumarate is a white to off-white or tan powder with a solubility of 4.7 mg per mL in water at 20 °C.

12 CLINICAL PHARMACOLOGY

12.1 Mechanism of Action

BIKTARVY is a fixed dose combination of antiretroviral drugs bicitegravir (BIC), emtricitabine (FTC), and tenofovir alafenamide (TAF) [see *Microbiology (12.4)*].

12.2 Pharmacodynamics

Cardiac Electrophysiology

In a thorough QT/QTc trial in 48 healthy participants, BIC at doses 1.5 and 6 times the recommended dose did not affect the QT/QTc interval and did not prolong the PR interval. In a thorough QT/QTc trial in 48 healthy participants, TAF at the recommended dose or at a dose 5 times the recommended dose, did not affect the QT/QTc interval and did not prolong the PR interval. The effect of FTC on the QT interval is not known.

Effects on Serum Creatinine

Mean change from baseline in serum creatinine in healthy participants who received BIC 75 mg (1.5 times the approved recommended dosage) once daily with food for 14 days

was 0.1 mg per dL on Days 7 and 14 compared to placebo. BIC did not have a significant effect on the estimated creatinine clearance or on the actual glomerular filtration rate (determined by the clearance of probe drug, iohexol).

12.3 Pharmacokinetics

The pharmacokinetic (PK) properties of BIKTARVY components are provided in Table 4. The multiple dose PK parameters of BIKTARVY components (based on population pharmacokinetic analysis) are provided in Table 5.

Table 4 Pharmacokinetic Properties of the Components of BIKTARVY

		Bictegravir (BIC)	Emtricitabine (FTC)	Tenofovir Alafenamide (TAF)
Absorption				
T _{max} (h)*		2.0-4.0	1.5-2.0	0.5-2.0
Effect of high-fat meal (relative to fasting)†	AUC ratio	1.24 (1.16, 1.33)	0.96 (0.93, 0.99)	1.63 (1.43, 1.85)
	C _{max} ratio	1.13 (1.06, 1.20)	0.86 (0.78, 0.93)	0.92 (0.73, 1.14)
Distribution				
% bound to human plasma proteins		>99	<4	~80
Blood-to-plasma ratio		0.64	0.6	1.0
Elimination				
t _{1/2} (h)‡		17.3 (14.8, 20.7)	10.4 (9.0, 12.0)	0.51 (0.45, 0.62)‡
Metabolism				
Metabolic pathway(s)		CYP3A UGT1A1	Not significantly metabolized	Cathepsin A [§] (PBMCs) CES1 (hepatocytes)
Excretion				
Major route of elimination		Metabolism	Glomerular filtration and active tubular secretion	Metabolism
% of dose excreted in urine¶		35	70	<1
% of dose excreted in feces¶		60.3	13.7	31.7

PBMCs=peripheral blood mononuclear cells;

CES1=carboxylesterase 1

* Values reflect administration of BIKTARVY with or without food.

- † Values refer to geometric mean ratio [high-fat meal/ fasting] in PK parameters and (90% confidence interval). High fat meal is approximately 800 kcal, 50% fat.
- ‡ $t_{1/2}$ values refer to median (Q1, Q3) terminal plasma half-life. Note that the active metabolite of TAF, tenofovir diphosphate, has a half-life of 150-180 hours within PBMCs.
- § *In vivo*, TAF is hydrolyzed within cells to form tenofovir (major metabolite), which is phosphorylated to the active metabolite, tenofovir diphosphate. *In vitro* studies have shown that TAF is metabolized to tenofovir by cathepsin A in PBMCs and macrophages; and by CES1 in hepatocytes.
- ¶ Dosing in mass balance studies: single dose administration of [14 C] BIC; single dose administration of [14 C] FTC after multiple dosing of FTC for ten days; single dose administration of [14 C] TAF.

Table 5 Multiple Dose PK Parameters of BIC, FTC, and TAF Following Oral Administration of BIKTARVY in HIV-Infected Adults

Parameter Mean (CV%)	Bictegravir	Emtricitabine	Tenofovir Alafenamide
C_{max} (microgram per mL)	6.15 (22.9)	2.13 (34.7)	0.121 (15.4)
AUC_{tau} (microgram•h per mL)	102 (26.9)	12.3 (29.2)	0.142 (17.3)
C_{trough} (microgram per mL)	2.61 (35.2)	0.096 (37.4)	NA

CV=Coefficient of Variation; NA=Not Applicable

Specific Populations

Patients with Renal Impairment

No clinically relevant differences in the pharmacokinetics of BIC, TAF, or its metabolite tenofovir were observed between participants with severe renal impairment (estimated creatinine clearance of 15 to less than 30 mL/min, by Cockcroft-Gault method) and healthy participants in Phase 1 studies. In a separate Phase 1 study of FTC alone, FTC exposures were increased in participants with severe renal impairment.

The pharmacokinetics of BIC, FTC and TAF were evaluated in a subset of HIV-1 infected virologically-suppressed participants with ESRD (estimated creatinine clearance less than 15 mL/min, by Cockcroft-Gault method) receiving chronic hemodialysis in Trial 1825. The pharmacokinetics of TAF were similar between healthy participants and participants with ESRD receiving chronic hemodialysis; increases in FTC and tenofovir exposures in participants with ESRD were not considered clinically relevant. Median (minimum, maximum) BIC C_{trough} values in participants (n=7) with ESRD who received BIKTARVY were 846 ng/mL (288, 1810) compared to 2540 ng/mL (757, 6499) in participants (N=584) with normal renal function. Despite significantly lower BIC C_{trough} values in the virologically-suppressed ESRD population, virologic suppression was maintained [see *Use in Specific Populations (8.6)*, and *Clinical Studies (14.3)*].

Patients with Hepatic Impairment

Bictegravir: Clinically relevant changes in the pharmacokinetics of BIC were not observed in participants with moderate (Child-Pugh Class B) hepatic impairment.

Emtricitabine: The pharmacokinetics of FTC has not been studied in participants with hepatic impairment; however, FTC is not significantly metabolized by liver enzymes, so the impact of hepatic impairment should be limited.

Tenofovir Alafenamide: Clinically relevant changes in the pharmacokinetics of TAF or its metabolite tenofovir were not observed in participants with mild or moderate (Child-Pugh Class A and B) hepatic impairment [see *Use in Specific Populations (8.7)*].

Hepatitis B and/or Hepatitis C Virus Coinfection

The pharmacokinetics of BIC, FTC, and TAF have not been evaluated in participants with hepatitis B and/or C virus.

Geriatric Patients

The pharmacokinetics of BIC, FTC, and TAF have not been fully evaluated in the elderly (65 years of age and older). Population pharmacokinetics analysis of HIV-infected participants in Phase 3 trials of BIKTARVY showed that age did not have a clinically relevant effect on exposures of BIC and TAF up to 74 years of age [see *Use in Specific Populations (8.5)*].

Pediatric Patients

Mean BIC C_{trough} was lower in 50 pediatric patients aged 12 to less than 18 years and weighing at least 35 kg who received BIKTARVY in Trial 1474 relative to adults following administration of BIKTARVY, but was not considered clinically significant based on exposure-response relationships; exposures of FTC and TAF in these pediatric patients were similar to those in adults (Table 6).

Table 6 Multiple Dose PK Parameters of BIC, FTC, and TAF Following Oral Administration of BIKTARVY in Pediatric Participants with HIV-1 Aged 12 to less than 18 years

Parameter Mean (CV%)	Bictegravir*	Emtricitabine†	Tenofovir Alafenamide*
C_{max} (microgram per mL)	6.24 (27.1)	2.69 (34.0)	0.133 (70.2)
AUC_{tau} (microgram•h per mL)	89.1 (31.0)	13.6 (21.7)	0.196 (50.3)
C_{trough} (microgram per mL)	1.78 (44.4)	0.064 (25.0)	NA

CV=Coefficient of Variation; NA=Not Applicable

* From Population PK analysis of cohort 1 of Trial 1474 (n=50 for BIC; n=49 for TAF).

† From Intensive PK analysis of cohort 1 of Trial 1474 (n=24).

Mean BIC C_{max} , and exposures of FTC and TAF (AUC_{tau} and C_{max}) achieved in 50 pediatric patients between the ages of 6 to less than 12 years and weighing at least 25 kg, and in 22 pediatric patients at least 2 years of age and weighing at least 14 to less than 25 kg who received BIKTARVY in Trial 1474 were higher than exposures in adults; however, the increases were not considered clinically significant as the safety profiles were similar in adult and pediatric patients (Tables 7 and 8) [see Use in Specific Populations (8.4)].

Table 7 Multiple Dose PK Parameters of BIC, FTC, and TAF Following Oral Administration of BIKTARVY in Pediatric Participants with HIV-1 Aged 6 to less than 12 years

Parameter Mean (CV%)	Bictegravir*	Emtricitabine†	Tenofovir Alafenamide*
C_{max} (microgram per mL)	9.46 (24.3)	3.89 (31.0)	0.205 (44.6)
AUC_{tau} (microgram•h per mL)	128 (27.8)	17.6 (36.9)	0.278 (40.3)
C_{trough} (microgram per mL)	2.36 (39.0)	0.227 (323)	NA

CV=Coefficient of Variation; NA=Not Applicable

* From Population PK analysis of cohort 2 of Trial 1474 (n=50 for BIC; n=47 for TAF).

† From Intensive PK analysis of cohort 2 of Trial 1474 (n=25 except n=24 for C_{trough}).

Table 8 Multiple Dose PK Parameters of BIC, FTC, and TAF Following Oral Administration of BIKTARVY in Pediatric Participants with HIV-1 at Least 2 Years of Age* and Weighing at Least 14 to Less than 25 kg

Parameter Mean (CV%)	Bictegravir†	Emtricitabine‡	Tenofovir Alafenamide‡
C_{max} (microgram per mL)	9.15 (44.8)	3.85 (34.7)	0.414 (31.0)
AUC_{tau} (microgram•h per mL)	126 (42.4)	15.0 (21.9)	0.305 (42.6)
C_{trough} (microgram per mL)	2.43 (40.1)	0.210 (243)	NA

CV=Coefficient of Variation; NA=Not Applicable

* Cohort 3 of Trial 1474 enrolled pediatric participants from 3 to 9 years of age.

† From Population PK analysis of cohort 3 of Trial 1474 (n=22).

‡ From Intensive PK analysis of cohort 3 of Trial 1474 (n=12 except n=11 for C_{trough} for FTC).

Race and Gender

No clinically relevant changes in the pharmacokinetics of BIC, FTC, and TAF were observed based on gender or race.

Pregnancy

Plasma exposures (C_{trough} and AUC_{tau}) of BIC, FTC, and TAF after intake of BIKTARVY 50 mg/200 mg/25 mg were lower during pregnancy as compared to postpartum (Table 9). The exposure changes during pregnancy are not considered clinically significant in virologically suppressed pregnant individuals [see *Drug Interactions (7.5)*].

Table 9 Steady-state PK Parameters of BIC, FTC, and TAF Following Oral Administration of BIKTARVY in Virologically-Suppressed Pregnant Adults with HIV-1 in the Second and Third Trimesters and Week 12 Postpartum

Parameter Mean (%CV)	Second Trimester (N=21)	Third Trimester (N=30)	Week 12 Postpartum (N=32)
Bictegravir			
C _{max} (microgram per mL)	5.82 (30.1)	5.37 (25.9)	11.03 (24.9)
AUC _{tau} (microgram•h per mL)	62.8 (32.2)	60.2 (29.1)	148.3 (28.5)
Unbound AUC _{tau} [*] (microgram•h per mL)	0.224 (42.0)	0.219 (33.9)	0.374 (32.2)
C _{trough} (microgram per mL)	1.05 (45.2)	1.07 (41.7)	3.64 (34.1)
Emtricitabine			
C _{max} (microgram per mL)	2.64 (36.6)	2.59 (26.5)	3.36 (26.9)
AUC _{tau} (microgram•h per mL)	10.3 (20.0)	10.4 (20.3)	15.3 (21.9)
C _{trough} (microgram per mL)	0.06 (103.9)	0.05 (27.2)	0.08 (33.7)
Tenofovir Alafenamide			
C _{max} (microgram per	0.33 (52.1)	0.27 (42.1)	0.49 (52.5)

mL)			
AUC _{tau} (microgram•h per mL)	0.24 (45.6)	0.21 (45.0)	0.30 (31.8)
Unbound AUC _{tau} * (microgram•h per mL)	0.015 (28.2)	0.016 (28.4)	0.017 (23.4)

CV = Coefficient of Variation; NA = Not Available

* Calculated by correcting the individual AUC_{tau} estimates by the % unbound fraction.

Drug Interaction Studies

As BIKTARVY is a complete regimen for the treatment of HIV-1 infection, comprehensive information regarding potential drug-drug interactions with other antiretroviral agents is not provided.

BIC is a substrate of CYP3A and UGT1A1.

BIC is an inhibitor of OCT2 and MATE1. At clinically relevant concentrations, BIC is not an inhibitor of hepatic transporters OATP1B1, OATP1B3, OCT1, BSEP, renal transporters OAT1 and OAT3, or CYP (including CYP3A) or UGT1A1 enzymes.

TAF is a substrate of P-gp and BCRP.

At clinically relevant concentrations, TAF is not an inhibitor of drug transporters P-gp, BCRP, hepatic transporters OATP1B1, OATP1B3, OCT1, BSEP, renal transporters OAT1, OAT3, OCT2, MATE1, or CYP (including CYP3A) or UGT1A1 enzymes.

Drug interaction studies were conducted with BIKTARVY or its components. Tables 10 and 11 summarize the pharmacokinetic effects of other drugs on BIC and TAF, respectively. Table 12 summarizes the pharmacokinetic effects of BIKTARVY or its components on other drugs.

Effect of Other Drugs on BIKTARVY Components

Table 10 Effect of Other Drugs on BIC*

Coadministered Drug	Dose of Coadministered Drug (mg)	BIC (mg)	Mean Ratio of BIC Pharmacokinetic Parameters (90% CI); No effect = 1.00		
			C _{max}	AUC	C _{min}
Ledipasvir/Sofosbuvir (fed)	90/400 once daily	75 once daily	0.98 (0.94, 1.03)	1.00 (0.97, 1.03)	1.04 (0.99, 1.09)
Rifabutin (fasted)	300 once daily	75 once daily	0.80 (0.67, 0.97)	0.62 (0.53, 0.72)	0.44 (0.37, 0.52)
		75	0.72	0.25	

Rifampin (fed)	600 once daily	75 single dose	0.72 (0.67, 0.78)	0.25 (0.22, 0.27)	NA
Sofosbuvir/velpatasvir/voxilaprevir (fed)	400/100/100+100 voxilaprevir [†] once daily	50 once daily	0.98 (0.94, 1.01)	1.07 (1.03, 1.10)	1.10 (1.05, 1.17)
Voriconazole (fasted)	300 twice daily	75 single dose	1.09 (0.96, 1.23)	1.61 (1.41, 1.84)	NA
Maximum strength antacid (simultaneous administration, fasted)	20 mL [‡] single dose (oral)	50 single dose	0.20 (0.16, 0.24)	0.21 (0.18, 0.26)	NA
Maximum strength antacid (2 h after BIKTARVY fasted)	20 mL [‡] single dose (oral)	50 single dose	0.93 (0.88, 1.00)	0.87 (0.81, 0.93)	NA
Maximum strength antacid (2 h before BIKTARVY fasted)	20 mL [‡] single dose (oral)	50 single dose	0.42 (0.33, 0.52)	0.48 (0.38, 0.59)	NA
Maximum strength antacid (simultaneous administration, fed [§])	20 mL [‡] single dose (oral)	50 single dose	0.51 (0.43, 0.62)	0.53 (0.44, 0.64)	NA
Calcium carbonate (simultaneous administration, fasted)	1200 single dose	50 single dose	0.58 (0.51, 0.67)	0.67 (0.57, 0.78)	NA
Calcium carbonate (simultaneous administration, fed [§])	1200 single dose	50 single dose	0.90 (0.78, 1.03)	1.03 (0.89, 1.20)	NA
Ferrous fumarate (simultaneous administration, fasted)	324 single dose	50 single dose	0.29 (0.26, 0.33)	0.37 (0.33, 0.42)	NA
Ferrous fumarate (simultaneous administration, fed [§])	324 single dose	50 single dose	0.75 (0.65, 0.87)	0.84 (0.74, 0.95)	NA

NA= Not Applicable

* All interaction studies conducted in healthy volunteers.

† Study conducted with additional voxilaprevir 100 mg to achieve voxilaprevir exposures expected in HCV-infected patients.

‡ Maximum strength antacid contained 80 mg aluminum hydroxide, 80 mg magnesium hydroxide, and 8 mg simethicone, per mL.

§ Reference treatment administered under fasted conditions.

Table 11 Effect of Other Drugs on TAF*

Coadministered Drug	Dose of Coadministered Drug (mg)	Tenofovir Alafenamide (mg)	Mean Ratio of Tenofovir Alafenamide Pharmacokinetic Parameters (90% CI); No effect = 1.00		
			C _{max}	AUC	C _{min}
Carbamazepine	300 twice daily	25 single dose [†]	0.43 (0.36, 0.51)	0.46 (0.40, 0.54)	NA
Ledipasvir/sofosbuvir	90/400 once daily	25 once daily	1.17 (1.00, 1.38)	1.27 (1.19, 1.34)	NA
Sofosbuvir/velpatasvir/voxilaprevir	400/100/100 +100 voxilaprevir [‡] once daily	25 once daily	1.28 (1.09, 1.51)	1.57 (1.44, 1.71)	NA

NA= Not Applicable

* All interaction studies conducted in healthy volunteers.

[†] Study conducted with emtricitabine/tenofovir alafenamide.

[‡] Study conducted with additional voxilaprevir 100 mg to achieve voxilaprevir exposures expected in HCV-infected patients.

Effect of BIKTARVY Components on Other Drugs

Table 12 Effect of Components of BIKTARVY on Other Drugs*

Coadministered Drug	Dose of Coadministered Drug (mg)	BIC (mg)	TAF (mg)	Mean Ratio of Coadministered Drug Pharmacokinetic Parameters (90% CI); No effect = 1.00		
				C _{max}	AUC	C _{min}
Ledipasvir	90/400 once daily	75 once daily	25 once daily	0.85 (0.81, 0.90)	0.87 (0.83, 0.92)	0.90 (0.84, 0.96)
Sofosbuvir				1.11 (1.00, 1.24)	1.07 (1.01, 1.13)	NA
GS-331007 [†]				1.10 (1.07, 1.13)	1.11 (1.08, 1.14)	1.02 (0.99, 1.06)
Metformin	500 twice daily	50 once daily	25 once daily	1.28 (1.21, 1.36)	1.39 (1.31, 1.48)	1.36 (1.21, 1.53)
Midazolam	2 single dose	50 once daily	25 once daily	1.03 (0.87, 1.23)	1.15 (1.00, 1.31)	NA

Norelgestromin	norgestimate 0.180/0.215/0.250 once daily / ethinyl estradiol 0.025 once daily	75 once daily	-	1.23 (1.14, 1.32)	1.08 (1.05, 1.10)	1.10 (1.05, 1.15)
Norgestrel				1.15 (1.10, 1.21)	1.13 (1.07, 1.19)	1.14 (1.06, 1.22)
Ethinyl estradiol				1.15 (1.03, 1.27)	1.04 (0.99, 1.10)	1.05 (0.95, 1.14)
Norelgestromin	norgestimate 0.180/0.215/0.250 once daily / ethinyl estradiol 0.025 once daily	-	25 once daily [‡]	1.17 (1.07,1.26)	1.12 (1.07,1.17)	1.16 (1.08, 1.24)
Norgestrel				1.10 (1.02, 1.18)	1.09 (1.01, 1.18)	1.11 (1.03, 1.20)
Ethinyl estradiol				1.22 (1.15, 1.29)	1.11 (1.07, 1.16)	1.02 (0.92, 1.12)
Sertraline	50 single dose	-	10 once daily [§]	1.14 (0.94, 1.38)	0.93 (0.77, 1.13)	NA
Sofosbuvir	400/100/100+100 [¶] once daily	50 once daily	25 once daily	1.14 (1.04,1.25)	1.09 (1.02, 1.15)	NA
GS-331007 [†]				1.03 (0.99,1.06)	1.03 (1.00,1.06)	1.01 (0.98, 1.05)
Velpatasvir				0.96 (0.91,1.01)	0.96 (0.90, 1.02)	0.94 (0.88, 1.01)
Voxilaprevir				0.90 (0.76, 1.06)	0.91 (0.80, 1.03)	0.97 (0.88, 1.06)

NA= Not Applicable

* All interaction studies conducted in healthy volunteers.

† The predominant circulating nucleoside metabolite of sofosbuvir.

‡ Study conducted with emtricitabine/tenofovir alafenamide.

§ Study conducted with elvitegravir/cobicistat/emtricitabine/tenofovir alafenamide.

¶ Study conducted with additional voxilaprevir 100 mg to achieve voxilaprevir exposures expected in HCV-infected patients.

12.4 Microbiology

Mechanism of Action

Bictegravir: BIC inhibits the strand transfer activity of HIV-1 integrase (integrase strand transfer inhibitor; INSTI), an HIV-1 encoded enzyme that is required for viral replication. Inhibition of integrase prevents the integration of linear HIV-1 DNA into host genomic DNA, blocking the formation of the HIV-1 provirus and propagation of the virus.

Emtricitabine: FTC, a synthetic nucleoside analog of cytidine, is phosphorylated by

cellular enzymes to form emtricitabine 5'-triphosphate. Emtricitabine 5'-triphosphate inhibits the activity of the HIV-1 RT by competing with the natural substrate deoxycytidine 5'-triphosphate and by being incorporated into nascent viral DNA which results in chain termination. Emtricitabine 5'-triphosphate is a weak inhibitor of mammalian DNA polymerases α , β , ϵ , and mitochondrial DNA polymerase γ .

Tenofovir Alafenamide: TAF is a phosphoramidate prodrug of tenofovir (2'-deoxyadenosine monophosphate analog). Plasma exposure to TAF allows for permeation into cells and then TAF is intracellularly converted to tenofovir through hydrolysis by cathepsin A. Tenofovir is subsequently phosphorylated by cellular kinases to the active metabolite tenofovir diphosphate. Tenofovir diphosphate inhibits HIV-1 replication through incorporation into viral DNA by the HIV RT, which results in DNA chain-termination. Tenofovir diphosphate is a weak inhibitor of mammalian DNA polymerases that include mitochondrial DNA polymerase γ and there is no evidence of toxicity to mitochondria in cell culture.

Antiviral Activity in Cell Culture

The triple combination of BIC, FTC, and TAF was not antagonistic with respect to antiviral activity in cell culture.

Bictegravir: The antiviral activity of BIC against laboratory and clinical isolates of HIV-1 was assessed in lymphoblastoid cell lines, PBMCs, primary monocyte/macrophage cells, and CD4+ T-lymphocytes. In MT-4 cells (human lymphoblastoid T-cell line) acutely infected with HIV-1 IIB, the mean 50% effective concentration (EC_{50}) was 2.4 ± 0.4 nM, and the protein-adjusted EC_{95} value was 361 nM (0.162 micrograms per mL). BIC displayed antiviral activity in activated PBMCs against clinical isolates of HIV-1 representing groups M, N, and O, including subtypes A, B, C, D, E, F, and G, with a median EC_{50} value of 0.55 nM (range <0.05 to 1.71 nM). The EC_{50} value against a single HIV-2 isolate was 1.1 nM.

Emtricitabine: The antiviral activity of FTC against laboratory and clinical isolates of HIV-1 was assessed in T lymphoblastoid cell lines, the MAGI-CCR5 cell line, and PBMCs. In PBMCs acutely infected with HIV-1 subtypes A, B, C, D, E, F, and G, the median EC_{50} value for FTC was 9.5 nM (range 1 to 30 nM) and against HIV-2 was 7 nM.

Tenofovir Alafenamide: The antiviral activity of TAF against laboratory and clinical isolates of HIV-1 subtype B was assessed in lymphoblastoid cell lines, PBMCs, primary monocyte/macrophage cells and CD4-T lymphocytes. The EC_{50} values for TAF ranged from 2.0 to 14.7 nM. TAF displayed antiviral activity in cell culture against all HIV-1 groups (M, N, O), including subtypes A, B, C, D, E, F, and G (EC_{50} values ranged from 0.1 to 12 nM) and strain specific activity against HIV-2 (EC_{50} values ranged from 0.9 to 2.6 nM).

Resistance

In Cell Culture

Bictegravir: HIV-1 isolates with reduced susceptibility to BIC have been selected in cell culture. In one selection with BIC, a virus pool emerged expressing amino acid substitutions M50I and R263K in the HIV-1 integrase. M50I, R263K, and M50I+R263K substitutions, when introduced into a wild-type virus by site-directed mutagenesis, conferred 1.3-, 2.2-, and 2.9-fold reduced susceptibility to BIC, respectively. In a second selection, emergence of amino acid substitutions T66I and S153F was detected, and 0.4-

, 1.9-, and 0.5-fold reductions in BIC susceptibility were observed with T66I, S153F, and T66I+S153F, respectively. In addition, S24G and E157K substitutions emerged during the selection process.

Emtricitabine: HIV-1 isolates with reduced susceptibility to FTC were selected in cell culture and in participants treated with FTC. Reduced susceptibility to FTC was associated with M184V or I substitutions in HIV-1 RT.

Tenofovir Alafenamide: HIV-1 isolates with reduced susceptibility to TAF were selected in cell culture. HIV-1 isolates selected by TAF expressed a K65R substitution in HIV-1 RT, sometimes in the presence of S68N or L429I substitutions; in addition, a K70E substitution in HIV-1 RT was observed.

In Clinical Trials

In Participants with No Antiretroviral Treatment History: Pooled results of genotypic resistance analyses were performed on paired baseline and on-treatment HIV-1 isolates from participants receiving BIKTARVY in Trials 1489 and 1490 through Week 144 of the double-blind phase (N=634) or Week 96 of the extension phase (n=1025) [see *Clinical Studies (14.2)*] who had HIV-1 RNA greater than or equal to 200 copies/mL at the time of confirmed virologic failure or early study drug discontinuation. In the final resistance analysis population, no specific amino acid substitutions emerged consistently in the 11 participants with treatment failure and with evaluable genotypic resistance data and failed to establish an association with genotypic BIC resistance. There were no treatment-emergent NRTI resistance-associated substitutions detected in the 11 evaluated treatment failure isolates. Phenotypic resistance analyses of failure isolates found fold-changes in drug susceptibility below the biological or clinical cutoffs for BIC, FTC, and TFV, compared to wild-type reference HIV-1.

In Virologically-Suppressed Adult participants: In 2 of the switch trials, Trials 1844 and 1878, of virologically suppressed HIV-1 infected participants (n=572), only one participants with virologic rebound in the resistance analysis population had IN genotypic and phenotypic data, and 2 rebounders had RT genotypic and phenotypic data. No participants had HIV-1 with treatment-emergent genotypic or phenotypic resistance to BIC, FTC, or TAF. In Trial 4030, no participants receiving BIKTARVY had treatment-emergent phenotypic resistance to BIC, FTC, or TAF.

In Virologically-Suppressed Pediatric Participants: In Trial 1474 [see *Clinical Studies (14.4)*], two of 50 participants in cohort 1 were evaluated for the development of resistance through Week 48; no amino acid substitutions known to be associated with resistance to BIC, FTC, or TFV were detected. No participants in cohort 2 or 3 met the criteria for resistance analyses through Week 24.

Cross-Resistance

Bictegravir: Cross-resistance has been observed among INSTIs. The susceptibility of BIC was tested against 64 clinical isolates expressing known INSTI resistance-associated substitutions listed by IAS-USA (20 with single substitutions and 44 with 2 or more substitutions). Isolates with a single INSTI-resistance substitution including E92Q, T97A, Y143C/R, Q148R, and N155H showed less than 2-fold reduced susceptibility to BIC. All isolates (n=14) with more than 2.5-fold reduced susceptibility to BIC (above the biological cutoff for BIC) contained G140A/C/S and Q148H/R/K substitutions; the majority (64.3%, 9/14) had a complex INSTI resistance pattern with an additional INSTI-resistance substitution L74M, T97A, or E138A/K. Of those evaluated isolates containing G140A/C/S

and Q148H/R/K substitutions in the absence of additional INSTI-resistance substitutions, 38.5% (5/13) showed more than 2.5-fold reduction. In addition, site-directed mutant viruses with G118R (dolutegravir and raltegravir treatment-emergent substitution) and G118R+T97A had 3.4- and 2.8-fold reduced susceptibility to BIC, respectively.

BIC demonstrated equivalent antiviral activity with less than 2-fold reductions in susceptibility against HIV-1 variants expressing substitutions associated with resistance to NNRTIs, NRTIs, and PIs, compared with the wild-type virus.

Emtricitabine: Cross-resistance has been observed among NRTIs. FTC-resistant viruses with an M184V/I substitution in HIV-1 RT were cross-resistant to lamivudine. HIV-1 isolates containing the K65R RT substitution, selected *in vivo* by abacavir, didanosine, and tenofovir, demonstrated reduced susceptibility to inhibition by FTC.

Tenofovir Alafenamide: Cross-resistance has been observed among NRTIs. Tenofovir resistance substitutions K65R and K70E result in reduced susceptibility to abacavir, didanosine, emtricitabine, lamivudine, and tenofovir. HIV-1 with multiple thymidine analog substitutions (M41L, D67N, K70R, L210W, T215F/Y, K219Q/E/N/R), or multinucleoside resistant HIV-1 with a T69S double insertion mutation or with a Q151M substitution complex including K65R, showed reduced susceptibility to TAF in cell culture.

13 NONCLINICAL TOXICOLOGY

13.1 Carcinogenesis, Mutagenesis, Impairment of Fertility

Bictegravir

BIC was not carcinogenic in a 6-month rasH2 transgenic mouse study at doses of up to 100 mg/kg/day in males and 300 mg/kg/day in females. BIC was not carcinogenic in a 2-year rat study at doses up to 300 mg/kg/day, which resulted in exposures of approximately 31 times the exposure in humans at the recommended dose of BIKTARVY.

BIC was not genotoxic in the reverse mutation bacterial test (Ames test), mouse lymphoma or rat micronucleus assays.

BIC did not affect fertility, reproductive performance or embryonic viability in male and female rats at 29 times higher exposures (AUC) than in humans at the recommended dose of BIKTARVY.

Emtricitabine

In long-term carcinogenicity studies of FTC, no drug-related increases in tumor incidence were found in mice at doses up to 750 mg per kg per day (25 times the human systemic exposure at the recommended dose of BIKTARVY) or in rats at doses up to 600 mg per kg per day (30 times the human systemic exposure at the recommended dose of BIKTARVY).

FTC was not genotoxic in the reverse mutation bacterial test (Ames test), mouse lymphoma or mouse micronucleus assays.

FTC did not affect fertility in male rats at approximately 140 times or in male and female mice at approximately 60 times higher exposures (AUC) than in humans given the recommended dose of BIKTARVY. Fertility was normal in the offspring of mice exposed

daily from before birth (in utero) through sexual maturity at daily exposures (AUC) of approximately 60 times higher than human exposures at the recommended dose of BIKTARVY.

Tenofovir Alafenamide

Since TAF is rapidly converted to tenofovir and a lower tenofovir exposure in rats and mice was observed after TAF administration compared to TDF administration, carcinogenicity studies were conducted only with TDF. Long-term oral carcinogenicity studies of TDF in mice and rats were carried out at exposures up to approximately 10 times (mice) and 4 times (rats) those observed in humans following a 300 mg dose of TDF. The tenofovir exposure in these studies was approximately 151 times (mice) and 51 times (rat) those observed in humans after administration of the daily recommended dose of BIKTARVY. At the high dose in female mice, liver adenomas were increased at tenofovir exposures approximately 151 times the exposure observed in humans at the recommended dose of BIKTARVY. In rats, the study was negative for carcinogenic findings.

TAF was not genotoxic in the reverse mutation bacterial test (Ames test), mouse lymphoma or rat micronucleus assays.

There were no effects on fertility, mating performance or early embryonic development when TAF was administered to male rats at a dose equivalent to 155 times the human dose of BIKTARVY based on body surface area comparisons for 28 days prior to mating and to female rats for 14 days prior to mating through Day 7 of gestation.

13.2 Animal Toxicology and/or Pharmacology

Minimal to slight infiltration of mononuclear cells in the posterior uvea was observed in dogs with similar severity after three and nine month administration of TAF; reversibility was seen after a three month recovery period. No eye toxicity was observed in the dog at systemic exposures of 7 (TAF) and 14 (tenofovir) times the exposure seen in humans with the recommended daily dose of BIKTARVY.

14 CLINICAL STUDIES

14.1 Description of Clinical Trials

The efficacy and safety of BIKTARVY were evaluated in the trials summarized in Table 13.

Table 13 Trials Conducted with BIKTARVY in Participants with HIV-1

Trial	Population	Trial Arms (N)	Timepoint (Week)
Trial 1489* (NCT 02607930)	Adults with no antiretroviral treatment history	BIKTARVY (314) ABC/DTG/3TC (315)	144 + 96 (OLE) [†]
Trial 1490* (NCT 02607956)		BIKTARVY (320) DTG + FTC/TAF(325)	144 + 96 (OLE) [†]
Trial 1411*			

Trial 1044 (NCT 02603120)		BIKTARVY (282) ABC/DTG/3TC (281)	48
Trial 1878 [§] (NCT 02603107)	Virologically- suppressed [‡] adults	BIKTARVY (290) ATV or DRV (with cobicistat or ritonavir) plus either FTC/TDF or ABC/3TC (287)	48
Trial 4030* (NCT 03110380)		BIKTARVY (284 [47 with M184V/I]) DTG plus FTC/TAF (281 [34 with M184V/I])	48
Trial 1825 [¶] (NCT 02600819)	Virologically- suppressed [‡] adults with ESRD [#] receiving chronic hemodialysis	FTC+TAF in combination with elvitegravir and cobicistat as a fixed- dose combination (55). In an extension phase of Trial 1825, 10 virologically-suppressed participants switched to BIKTARVY.	48 ^p
Trial 4449 [¶] (NCT 03405935)	Virologically- suppressed [‡] adults aged 65 years and over	BIKTARVY (86)	48
Trial 1474 [¶] (cohort 1) (NCT 02881320)	Virologically- suppressed [‡] adolescents between the ages of 12 to less than 18 years (at least 35 kg)	BIKTARVY (50)	48
Trial 1474 [¶] (cohort 2) (NCT 02881320)	Virologically- suppressed [‡] children between the ages of 6 to less than 12 years (at least 25 kg)	BIKTARVY (50)	24
Trial 1474 [¶] (cohort 3) (NCT 02881320)	Virologically- suppressed [‡] children at least 2 years of age (at least 14 to less than 25 kg)	BIKTARVY (22)	24

OLE = open-label extension

* Randomized, double blind, active controlled trial.

† 144-week double-blind active controlled phase followed by an extension phase in which 1025 participants from Trials 1489 and 1490 received open-label BIKTARVY for 96 weeks.

‡ HIV-1 RNA less than 50 copies per mL.

§ Randomized, open-label, active controlled trial.

- ¶ Open-label trial.
- # End stage renal disease (estimated creatinine clearance of less than 15 mL/min by Cockcroft-Gault method).
- p Participants received FTC+TAF in combination with elvitegravir and cobicistat for 96 weeks, followed by an extension phase in which 10 participants received BIKTARVY for 48 weeks.

14.2 Clinical Trial Results in Adults with HIV-1 and No Antiretroviral Treatment History

In Trial 1489, adults were randomized in a 1:1 ratio to receive either BIKTARVY (containing 50 mg of BIC, 200 mg of FTC, and 25 mg of TAF) (N=314) or ABC/DTG/3TC (600 mg/50 mg/300 mg) (N=315) once daily. In Trial 1490, participants were randomized in a 1:1 ratio to receive either BIKTARVY (N=320) or DTG + FTC/TAF (50 mg + 200 mg/25 mg) (N=325) once daily.

In Trial 1489, the mean age was 34 years (range 18–71), 90% were male, 57% were White, 36% were Black, and 3% were Asian. 22% of patients identified as Hispanic/Latino. The mean baseline plasma HIV-1 RNA was 4.4 log₁₀ copies/mL (range 1.3–6.5). The mean baseline CD4+ cell count was 464 cells per mm³ (range 0–1424) and 11% had CD4+ cell counts less than 200 cells per mm³. 16% of participants had baseline viral loads greater than 100,000 copies per mL.

In Trial 1490, the mean age was 37 years (range 18–77), 88% were male, 59% were White, 31% were Black, and 3% were Asian. 25% of patients identified as Hispanic/Latino. The mean baseline plasma HIV-1 RNA was 4.4 log₁₀ copies/mL (range 2.3–6.6). The mean baseline CD4+ cell count was 456 cells per mm³ (range 2–1636) and 12% had CD4+ cell counts less than 200 cells per mm³. 19% of participants had baseline viral loads greater than 100,000 copies per mL.

In both trials, participants were stratified by baseline HIV-1 RNA (less than or equal to 100,000 copies per mL, greater than 100,000 copies per mL to less than or equal to 400,000 copies per mL, or greater than 400,000 copies per mL), by CD4 count (less than 50 cells per mm³, 50-199 cells per mm³, or greater than or equal to 200 cells per mm³), and by region (US or ex-US).

Treatment outcomes of Trials 1489 and 1490 through Week 144 are presented in Table 14.

Table 14 Virologic Outcomes of Randomized Treatment in Trials 1489 and 1490 at Week 144* in Adults with No Antiretroviral Treatment History

	Trial 1489		Trial 1490	
	BIKTARVY (N=314)	ABC/DTG/3TC (N=315)	BIKTARVY (N=320)	DTG + FTC/TAF (N=325)
HIV-1 RNA < 50 copies/mL	82%	84%	82%	84%
Treatment Difference (95% CI) BIKTARVY vs. Comparator	-2.6% (-8.5% to 3.4%)		-1.9% (-7.8% to 3.9%)	

HIV-1 RNA \geq 50 copies/mL[†]	1%	3%	5%	3%
No Virologic Data at Week 144 Window	18%	13%	13%	13%
Discontinued Study Drug Due to AE or Death [‡]	1%	2%	3%	3%
Discontinued Study Drug Due to Other Reasons and Last Available HIV-1 RNA $<$ 50 copies/mL [§]	16%	11%	11%	9%
Missing Data During Window but on Study Drug	1%	$<$ 1%	0%	1%

* Week 144 window was between Day 967 and 1050 (inclusive).

[†] Includes participants who had \geq 50 copies/mL in the Week 144 window; participants who discontinued early due to lack or loss of efficacy; participants who discontinued for reasons other than an adverse event (AE), death or lack or loss of efficacy and at the time of discontinuation had a viral value of \geq 50 copies/mL.

[‡] Includes participants who discontinued due to AE or death at any time point from Day 1 through the time window if this resulted in no virologic data on treatment during the specified window.

[§] Includes participants who discontinued for reasons other than an AE, death, or lack or loss of efficacy, e.g., withdrew consent, loss to follow-up, etc.

Treatment outcomes were similar across subgroups by age, sex, race, baseline viral load, and baseline CD4+ cell count.

In Trials 1489 and 1490, the mean increase from baseline in CD4+ count at Week 144 was 299 and 317 cells per mm³ in the BIKTARVY and ABC/DTG/3TC groups, respectively, and 278 and 289 cells per mm³ in the BIKTARVY and DTG + FTC/TAF groups, respectively.

14.3 Use in Individuals with an Antiretroviral Treatment History and Not Virologically-Suppressed

Use of BIKTARVY in those with an antiretroviral treatment history and not virologically suppressed is supported by a scientific rationale that this population is expected to have similar virologic response rates to those with no history of antiretroviral treatment provided that the virus is susceptible to the individual components of the regimen. Because limited clinical trial data are available supporting the efficacy of BIKTARVY in patients with baseline INSTI resistance substitutions, this indication states use in

individuals with an antiretroviral treatment history and who are not virologically suppressed with no evidence of known or suspected substitutions associated with resistance to the INSTI class, rather than only to bictegravir. Additionally, this indication states the individuals should have no known or suspected substitutions associated with resistance to emtricitabine, or tenofovir [see *Clinical Studies (14.2 and 14.5)*].

14.4 Clinical Trial Results in Adults with Virologically-Suppressed HIV-1 Who Switched to BIKTARVY

In Trial 1844, the efficacy and safety of switching from a regimen of DTG + ABC/3TC or ABC/DTG/3TC to BIKTARVY were evaluated in a randomized, double-blind trial of virologically-suppressed (HIV-1 RNA less than 50 copies per mL) HIV-1 infected adults (N=563, randomized and dosed). Participants must have been stably suppressed (HIV-1 RNA less than 50 copies per mL) on their baseline regimen for at least 3 months prior to trial entry and had no history of treatment failure. Participants were randomized in a 1:1 ratio to either switch to BIKTARVY (containing 50 mg of BIC, 200 mg of FTC, and 25 mg of TAF) at baseline (N=282), or stay on their baseline antiretroviral regimen (N=281). Participants had a mean age of 45 years (range 20–71), 89% were male, 73% were White, and 22% were Black. 17% of participants identified as Hispanic/Latino. The mean baseline CD4+ cell count was 723 cells per mm³ (range 124–2444).

In Trial 1878, the efficacy and safety of switching from either ABC/3TC or FTC/TDF (200/300 mg) plus ATV or DRV (given with either cobicistat or ritonavir) to BIKTARVY (containing 50 mg of BIC, 200 mg of FTC, and 25 mg of TAF) were evaluated in a randomized, open-label study of virologically-suppressed HIV-1 infected adults (N=577, randomized and dosed). Participants must have been stably suppressed on their baseline regimen for at least 6 months, must not have been previously treated with any INSTI, and had no history of treatment failure. Participants were randomized in a 1:1 ratio to either switch to BIKTARVY (N=290) or stay on their baseline antiretroviral regimen (N=287). Participants had a mean age of 46 years (range 20–79), 83% were male, 66% were White, and 26% were Black. 19% of participants identified as Hispanic/Latino. The mean baseline CD4+ cell count was 663 cells per mm³ (range 62–2582). Participants were stratified by prior treatment regimen. At screening, 15% of participants were receiving ABC/3TC plus ATV or DRV (given with either cobicistat or ritonavir) and 85% of participants were receiving FTC/TDF plus ATV or DRV (given with either cobicistat or ritonavir).

Treatment outcomes of Trials 1844 and 1878 through Week 48 are presented in Table 15.

Table 15 Virologic Outcomes of Trials 1844 and 1878 at Week 48* in Virologically-Suppressed Adults who Switched to BIKTARVY

	Trial 1844		Trial 1878	
	BIKTARVY (N=282)	ABC/DTG/3TC (N=281)	BIKTARVY (N=290)	ATV- or DRV-based regimen† (N=287)
HIV-1 RNA ≥	1%	<1%	2%	2%

50 copies/mL[‡]	1 / 0	~ 1 / 0	2 / 0	2 / 0
Treatment Difference (95% CI)	0.7% (-1.0% to 2.8%)		0.0% (-2.5% to 2.5%)	
HIV-1 RNA < 50 copies/mL	94%	95%	92%	89%
No Virologic Data at Week 48 Window	5%	5%	6%	9%
Discontinued Study Drug Due to AE or Death and Last Available HIV-1 RNA < 50 copies/mL	2%	1%	1%	1%
Discontinued Study Drug Due to Other Reasons and Last Available HIV-1 RNA < 50 copies/mL [§]	2%	3%	3%	7%
Missing Data During Window but on Study Drug	2%	1%	2%	2%

* Week 48 window was between Day 295 and 378 (inclusive).

† ATV given with cobicistat or ritonavir or DRV given with cobicistat or ritonavir plus either FTC/TDF or ABC/3TC.

‡ Includes participants who had ≥ 50 copies/mL in the Week 48 window; participants who discontinued early due to lack or loss of efficacy; participants who discontinued for reasons other than lack or loss of efficacy and at the time of discontinuation had a viral value of ≥ 50 copies/mL.

§ Includes participants who discontinued for reasons other than an AE, death, or lack or loss of efficacy, e.g., withdrew consent, loss to follow-up, etc.

In Trial 1844, treatment outcomes between treatment groups were similar across subgroups by age, sex, race, and region. The mean change from baseline in CD4+ count at Week 48 was -31 cells per mm³ in participants who switched to BIKTARVY and 4 cells per mm³ in participants who stayed on ABC/DTG/3TC.

In Trial 1878, treatment outcomes between treatment groups were similar across subgroups by age, sex, race, and region. The mean change from baseline in CD4+ count at Week 48 was 25 cells per mm³ in patients who switched to BIKTARVY and 0 cells per mm³ in patients who stayed on their baseline regimen.

In Trial 4030, the efficacy and safety of switching from DTG plus either FTC/TAF or FTC/TDF to BIKTARVY (containing 50 mg of BIC, 200 mg of FTC, and 25 mg of TAF) were evaluated in a randomized, double-blind study of virologically suppressed HIV-1 infected adults. Participants must have been stably suppressed (HIV-1 RNA less than 50 copies/mL) on their baseline regimen for at least 6 months (if documented or suspected NRTI resistance), or at least 3 months (if no documented or suspected NRTI resistance) prior to trial entry. Participants were randomized to switch to BIKTARVY (N=284) or to continue their prior treatment regimen, DTG+ F/TAF (N=281). The primary endpoint was the proportion of participants with HIV-1 RNA \geq 50 copies/mL at Week 48. At Week 48 the proportion of participants with HIV-1 RNA \geq 50 copies/mL was 0.4% (1/284) in the BIKTARVY group and 1.1% (3/281) in the DTG+F/TAF group (difference -0.7% [95%CI: -2.8%, 1.0%]).

Of the participants receiving BIKTARVY, 47 had HIV-1 with pre-existing M184V or I resistance substitutions (M184M/V, M184M/I, M184V/I, M184V) in HIV-1 RT. Eighty-nine percent (42/47) of participants with M184V or I remained suppressed (HIV-1 RNA < 50 copies/mL) and 11% (5/47 participants) did not have virologic data at the Week 48 timepoint due to study drug discontinuation.

In Trial 1825, an open-label single arm trial, the efficacy, safety, and pharmacokinetics of FTC and TAF (components of BIKTARVY) were evaluated in virologically-suppressed adults with ESRD (estimated creatinine clearance of less than 15 mL/min) on chronic hemodialysis treated with FTC+TAF in combination with elvitegravir and cobicistat as a fixed-dose combination tablet for 96 weeks (N=55). In an extension phase of Trial 1825, 10 virologically-suppressed participants switched to BIKTARVY and all participants remained virologically suppressed (HIV-1 RNA < 50 copies/mL) for 48 weeks.

In Trial 4449, the efficacy and safety of switching from a stable antiretroviral regimen to BIKTARVY (containing 50 mg of BIC, 200 mg of FTC, and 25 mg of TAF) were evaluated in an open-label, single arm trial of virologically-suppressed (HIV-1 RNA less than 50 copies per mL) HIV-1 infected adults aged 65 years and over (N=86). Participants treated with BIKTARVY had a mean age of 70 years (range: 65 to 80). The primary endpoint was the proportion of participants with HIV RNA > 50 copies/mL at Week 48. No participants had HIV RNA > 50 copies/mL. Ninety-one percent (78/86) of participants remained suppressed (HIV-1 RNA < 50 copies/mL) at Week 48. Eight participants did not have virologic data at the Week 48 timepoint due to discontinuation or missing data.

14.5 Clinical Trial Results in Pediatric Participants with HIV-1

In Trial 1474, an open-label, single arm trial the efficacy, safety, and pharmacokinetics of BIKTARVY in pediatric participants with HIV-1 were evaluated in virologically-suppressed adolescents between the ages of 12 to less than 18 years weighing at least 35 kg (N=50), in virologically-suppressed children between the ages of 6 to less than 12 years weighing at least 25 kg (N=50), and in virologically-suppressed children at least 2 years of age and weighing at least 14 to less than 25 kg (N=22).

Cohort 1: Virologically-suppressed adolescents (12 to less than 18 years; at least 35 kg)

Participants in cohort 1 treated with BIKTARVY (containing 50 mg of BIC, 200 mg of FTC, and 25 mg of TAF) once daily had a mean age of 14 years (range: 12 to 17) and a mean baseline weight of 51.7 kg (range: 35 to 123), 64% were female, 27% were Asian and 65% were black. At baseline, median CD4+ cell count was 750 cells per mm³ (range: 337 to 1207), and median CD4+% was 33% (range: 19% to 45%).

After switching to BIKTARVY, 98% (49/50) of participants in cohort 1 remained suppressed (HIV-1 RNA < 50 copies/mL) at Week 48. The mean change from baseline in CD4+ cell count at Week 48 was -22 cells per mm³.

Cohort 2: Virologically-suppressed children (6 to less than 12 years; at least 25 kg)

Participants in cohort 2 treated with BIKTARVY once daily had a mean age of 10 years (range: 6 to 11) and a mean baseline weight of 31.9 kg (range: 25 to 69), 54% were female, 22% were Asian and 72% were black. At baseline, median CD4+ cell count was 898 cells per mm³ (range 390 to 1991) and median CD4+% was 37% (range: 19% to 53%).

After switching to BIKTARVY (containing 50 mg of BIC, 200 mg of FTC, and 25 mg of TAF), 100% (50/50) of participants in cohort 2 remained suppressed (HIV-1 RNA < 50 copies/mL) at Week 24. The mean change from baseline in CD4+ cell count at Week 24 was -24 cells per mm³.

Cohort 3: Virologically-suppressed children (at least 2 years; at least 14 to less than 25 kg)

Participants in cohort 3 treated with BIKTARVY (containing 30 mg of BIC, 120 mg of FTC, and 15 mg of TAF) once daily had a mean age of 5 years (range: 3 to 9) and a mean baseline weight of 18.8 kg (range: 14 to 24), 50% were female, 23% were Asian and 73% were black. At baseline, the mean CD4+ cell count (SD) was 1104 (440), and the mean CD4% (SD) was 33.4% (6.0%).

After switching to BIKTARVY, 91% (20/22) of participants in cohort 3 remained suppressed (HIV-1 RNA < 50 copies/mL) at Week 24. HIV-1 RNA was not collected at Week 24 for 2 participants because of COVID-19 pandemic-related study disruption. The mean change from baseline to Week 24 in CD4+ cell count (SD) was -126 (264.2) cells per mm³ ; and the mean change in CD4% (SD) from baseline to Week 24 was 0.2% (4.4%).

16 HOW SUPPLIED/STORAGE AND HANDLING

BIKTARVY tablets are available in bottles and blister packs:

Bottle

- 50 mg/200 mg/25 mg tablets each contain 50 mg of bicitgravir (BIC), 200 mg of emtricitabine (FTC), and 25 mg of tenofovir alafenamide (TAF). These tablets are purplish brown, capsule-shaped, and film-coated with “GSI” debossed on one side and “9883” on the other side (NDC 61958-2501-1).
- 30 mg/120 mg/15 mg tablets each contain 30 mg of BIC, 120 mg of FTC, and 15 mg of TAF. These tablets are pink, capsule-shaped, and film-coated with “GSI” debossed on one side and “B” on the other side (NDC 61958-2505-1).
- 30 mg/120 mg/15 mg tablets each contain 30 mg of BIC, 120 mg of FTC, and 15 mg of TAF. These tablets are pink, capsule-shaped, and film-coated with a non-functional

bisecting score line on one side and “BVY” on the other side (NDC 61958-2506-1).

Each bottle contains 30 tablets, a silica gel desiccant, polyester coil, and is closed with a child-resistant closure. Do not remove the desiccant packet.

Store bottle below 30 °C (86 °F).

Keep bottle tightly closed.

Blister Packs

50 mg/200 mg/25 mg tablets each contain 50 mg of BIC, 200 mg of FTC, and 25 mg of TAF. These tablets are purplish brown, capsule-shaped, and film-coated with “GSI” debossed on one side and “9883” on the other side.

- Blister pack containing 30 tablets (4 strips each containing 7 tablets and 1 strip containing 2 tablets) (NDC 61958-2501-3).
- Blister pack containing 30 tablets (3 strips each containing 10 tablets) (NDC 61958-2501-5).

Blister packs are sealed with a child-resistant laminated foil lidding material (peel-push), and each blister cavity contains a die-cut desiccant film which is heat staked to the foil lidding material.

Store blister pack at 25 °C (77 °F), excursions permitted to 15–30 °C (59–86 °F) (see USP Controlled Room Temperature).

Dispense only in original containers.

17 PATIENT COUNSELING INFORMATION

Advise the patient to read the FDA-approved patient labeling (Patient Information).

Post-treatment Acute Exacerbation of Hepatitis B in Participants with HBV

Severe acute exacerbations of hepatitis B have been reported in patients with HBV and HIV-1 who have discontinued products containing FTC and/or TDF, and may likewise occur with discontinuation of BIKTARVY [see *Warnings and Precautions (5.1)*]. Advise the patient to not discontinue BIKTARVY without first informing their healthcare provider.

Drug Interactions

BIKTARVY may interact with certain drugs; therefore, advise patients to report to their healthcare provider the use of any other prescription or non-prescription medication or herbal products including St. John’s wort [see *Contraindications (4) and Drug Interactions (7)*].

Immune Reconstitution Syndrome

Advise patients to inform their healthcare provider immediately of any symptoms of infection, as in some patients with advanced HIV infection (AIDS), signs and symptoms of inflammation from previous infections may occur soon after anti-HIV treatment is started [see *Warnings and Precautions (5.3)*].

Renal Impairment

Advise patients to avoid taking BIKTARVY with concurrent or recent use of nephrotoxic

agents. Postmarketing cases of renal impairment, including acute renal failure, have been reported [see *Warnings and Precautions (5.4)*].

Lactic Acidosis and Severe Hepatomegaly

Lactic acidosis and severe hepatomegaly with steatosis, including fatal cases, have been reported with use of drugs similar to BIKTARVY. Advise patients that they should stop BIKTARVY if they develop clinical symptoms suggestive of lactic acidosis or pronounced hepatotoxicity [see *Warnings and Precautions (5.5)*].

Missed Dosage

Inform patients that it is important to take BIKTARVY on a regular dosing schedule with or without food and to avoid missing doses as it can result in development of resistance [see *Dosage and Administration (2.2)*].

Tablet Splitting

Advise caregivers that, for children unable to swallow a whole tablet, the tablet can be split and each part taken separately as long as all parts are ingested within approximately 10 minutes [see *Dosage and Administration (2.3)*].

Pregnancy Registry

Inform patients that there is an antiretroviral pregnancy registry to monitor fetal outcomes of pregnant individuals exposed to BIKTARVY [see *Use in Specific Populations (8.1)*].

Lactation

Inform individuals with HIV-1 that the potential risks of breastfeeding include: (1) HIV-1 transmission to infants without HIV-1, (2) developing viral resistance in infants with HIV-1, and (3) adverse reactions in a breastfed infant similar to those seen in adults [see *Use in Specific Populations (8.2)*].

BIKTARVY is a trademark of Gilead Sciences, Inc., or its related companies. All other trademarks referenced herein are the property of their respective owners.

© 2026 Gilead Sciences, Inc. All rights reserved.

Patient Information
BIKTARVY® (bik-TAR-vee)
(bictegravir, emtricitabine,
and tenofovir alafenamide)
tablets

Important: Ask your healthcare provider or pharmacist about medicines that should not be taken with BIKTARVY. For more information, see “What should I tell my healthcare provider before taking BIKTARVY?”

What is the most important information I should know about BIKTARVY?

BIKTARVY can cause serious side effects, including:

- **Worsening of hepatitis B virus (HBV). Your healthcare provider will test you for HBV before or when you start treatment with BIKTARVY. If you have HBV and take BIKTARVY, your HBV may get worse (flare-up) if you stop taking BIKTARVY. A “flare-up” is when your HBV suddenly returns in a worse way than before.**

- Do not run out of BIKTARVY. Refill your prescription or talk to your healthcare provider before your BIKTARVY is all gone.
- Do not stop taking BIKTARVY without first talking to your healthcare provider.
- If you stop taking BIKTARVY, your healthcare provider will need to check your health often and do blood tests regularly for several months to check your liver, and may give you a medicine to treat hepatitis B. Tell your healthcare provider about any new or unusual symptoms you may have after you stop taking BIKTARVY.

For more information about side effects, see “What are the possible side effects of BIKTARVY?”

What is BIKTARVY?

BIKTARVY is a prescription medicine that is used without other human immunodeficiency virus-1 (HIV-1) medicines to treat HIV-1 in adults and children who weigh at least 31 pounds (14 kg):

- who have not received HIV-1 medicines in the past, **or**
- who have received HIV-1 medicines in the past, or to replace their current HIV-1 medicines, **and** whose healthcare provider determines that they meet certain requirements.

HIV-1 is the virus that causes Acquired Immune Deficiency Syndrome (AIDS). BIKTARVY contains the medicines bictegrovir, emtricitabine, and tenofovir alafenamide. It is not known if BIKTARVY is safe and effective in children who weigh less than 31 pounds (14 kg).

Do not take BIKTARVY if you also take a medicine that contains:

- dofetilide
- rifampin

What should I tell my healthcare provider before taking BIKTARVY?

Before taking BIKTARVY, tell your healthcare provider about all your medical conditions, including if you:

- have liver problems, including HBV
- have kidney problems
- are pregnant or plan to become pregnant. Tell your healthcare provider if you become pregnant during treatment with BIKTARVY.

Pregnancy Registry: There is a pregnancy registry for those who take BIKTARVY during pregnancy. The purpose of this registry is to collect information about the health of you and your baby. Talk with your healthcare provider about how you can take part in this registry.

- are breastfeeding or plan to breastfeed. BIKTARVY passes to your baby in your breastmilk. Talk to your healthcare provider about the following risks to your baby from breastfeeding during treatment with BIKTARVY:
 - the HIV-1 virus may pass to your baby if your baby does not have HIV-1.
 - the HIV-1 virus may become harder to treat if your baby has HIV-1.
 - your baby may get side effects from BIKTARVY.

Tell your healthcare provider about all the medicines you take, including prescription and over-the-counter medicines, antacids, laxatives, vitamins, and herbal supplements.

Some medicines may interact with BIKTARVY. Keep a list of your medicines and show it to your healthcare provider and pharmacist when you get a new medicine.

- You can ask your healthcare provider or pharmacist for a list of medicines that interact with BIKTARVY.
- **Do not start a new medicine without telling your healthcare provider.** Your healthcare provider can tell you if it is safe to take BIKTARVY with other medicines.

How should I take BIKTARVY?

- Take BIKTARVY exactly as your healthcare provider tells you to take it. BIKTARVY is taken by itself (not with other HIV-1 medicines) to treat HIV-1.
- Take BIKTARVY 1 time each day with or without food.
- For children unable to swallow a whole tablet, the tablet can be split and each part taken separately as long as all parts are swallowed within about 10 minutes.
- If you are on dialysis, take your daily dose of BIKTARVY following dialysis.
- Do not change your dose or stop taking BIKTARVY without first talking with your healthcare provider. Stay under a healthcare provider's care during treatment with BIKTARVY.
- If you take antacids that contain aluminum or magnesium, take BIKTARVY at least 2 hours before or 6 hours after you take these antacids.
- If you take supplements or antacids that contain iron or calcium, take BIKTARVY with food at the same time that you take these supplements or antacids.
- If you are pregnant and take supplements or antacids that contain aluminum, magnesium, iron or calcium, talk to your healthcare provider about how to take BIKTARVY along with these supplements or antacids.
- Do not miss a dose of BIKTARVY.
- If you take too much BIKTARVY, call your healthcare provider or go to the nearest hospital emergency room right away.
- When your BIKTARVY supply starts to run low, get more from your healthcare provider or pharmacy. This is very important because the amount of virus in your blood may increase if the medicine is stopped for even a short time. The virus may develop resistance to BIKTARVY and become harder to treat.

What are the possible side effects of BIKTARVY?

BIKTARVY may cause serious side effects, including:

- **See "What is the most important information I should know about BIKTARVY?"**
- **Changes in your immune system (Immune Reconstitution Syndrome)** can happen when you start taking HIV-1 medicines. Your immune system may get stronger and begin to fight infections that have been hidden in your body for a long time. Tell your healthcare provider right away if you start having any new symptoms after starting your HIV-1 medicine.
- **New or worse kidney problems, including kidney failure.** Your healthcare provider should do blood and urine tests to check your kidneys when starting and during treatment with BIKTARVY. Your healthcare provider may tell you to stop taking BIKTARVY if you develop new or worse kidney problems.
- **Too much lactic acid in your blood (lactic acidosis).** Too much lactic acid is a serious but rare medical emergency that can lead to death. **Tell your healthcare provider right away if you get these symptoms:** weakness or being more tired than usual, unusual muscle pain, being short of breath or fast breathing, stomach

pain with nausea and vomiting, cold or blue hands and feet, feel dizzy or lightheaded, or a fast or abnormal heartbeat.

- **Severe liver problems.** In rare cases, severe liver problems can happen that can lead to death. **Tell your healthcare provider right away if you get these symptoms:** skin or the white part of your eyes turns yellow, dark “tea-colored” urine, light-colored stools, loss of appetite for several days or longer, nausea, or stomach-area pain.

The most common side effects of BIKTARVY are diarrhea, nausea, and headache. These are not all of the possible side effects of BIKTARVY.

Call your doctor for medical advice about side effects. You may report side effects to FDA at 1-800-FDA-1088.

How should I store BIKTARVY?

- Store BIKTARVY bottle below 86°F (30°C).
- Keep the bottle tightly closed.
- BIKTARVY contains a desiccant packet to help keep your medicine dry (protect it from moisture). Keep the desiccant packet in the bottle. **Do not eat the desiccant packet.**
- Store BIKTARVY blister pack at room temperature between 68°F to 77°F (20°C to 25°C).
- Keep BIKTARVY in its original bottle or blister pack.
- BIKTARVY comes in a child-resistant package.

Keep BIKTARVY and all medicines out of reach of children.

General information about the safe and effective use of BIKTARVY.

Medicines are sometimes prescribed for purposes other than those listed in a Patient Information leaflet. Do not use BIKTARVY for a condition for which it was not prescribed. Do not give BIKTARVY to other people, even if they have the same symptoms you have. It may harm them. If you would like more information, talk with your healthcare provider. You can ask your healthcare provider or pharmacist for information about BIKTARVY that is written for health professionals.

What are the ingredients in BIKTARVY?

Active ingredients: bicitegravir, emtricitabine, and tenofovir alafenamide.

Inactive ingredients: croscarmellose sodium, magnesium stearate, and microcrystalline cellulose.

The tablets are film-coated with a coating material containing iron oxide black, iron oxide red, polyethylene glycol, polyvinyl alcohol, talc, and titanium dioxide.

Manufactured and distributed by: Gilead Sciences, Inc. Foster City, CA 94404

BIKTARVY is a trademark of Gilead Sciences, Inc., or its related companies. All other trademarks referenced herein are the property of their respective owners.

© 2026 Gilead Sciences, Inc. All rights reserved. 210251-GS-016 D-26Sept2025

For more information, call 1-800-445-3235 or go to www.BIKTARVY.com.

This Patient Information has been approved by the U.S. Food and Drug Administration.

Revised:07/2025

PRINCIPAL DISPLAY PANEL - 50 mg/200 mg/25 mg Tablet Bottle Label

NDC 61958-2501-1

30 tablets

Biktarvy®

(bictegravir, emtricitabine, and

tenofovir alafenamide) tablets

50 mg /200 mg /25 mg

Note to pharmacist:

Do not cover ALERT box with pharmacy label.

ALERT: Find out about medicines that

should NOT be taken with Biktarvy

The image shows a rectangular white label for Biktarvy tablets. At the top left, it says 'Biktarvy tablets' and describes the contents: 'Each tablet contains 50 mg of bictegravir (equivalent to 52.5 mg of bictegravir sodium), 200 mg of emtricitabine, and 25 mg of tenofovir alafenamide (equivalent to 28 mg of tenofovir alafenamide fumarate)'. Below this, it provides storage instructions: 'Store below 30 °C (86 °F) (see insert)'. Further down, it says 'Keep container tightly closed. Dispense only in original container. See package insert for dosage and administration.' A prominent warning reads 'KEEP OUT OF THE REACH OF CHILDREN'. The manufacturer information is 'Manufactured for: Gilead Sciences, Inc. Foster City, CA 94404' and 'Made in Germany'. On the right side, it says 'NDC 61958-2501-1 30 tablets' and '© 2019 Gilead Sciences, Inc.'. The product name 'Biktarvy®' is in large bold letters, followed by '(bictegravir, emtricitabine, and tenofovir alafenamide) tablets' and '50 mg /200 mg /25 mg'. A red-bordered box contains the text: 'Note to pharmacist: Do not cover ALERT box with pharmacy label. ALERT: Find out about medicines that should NOT be taken with Biktarvy'. The Gilead logo is on the right, and the number '90231001' is printed vertically on the far right edge. There are black redaction boxes on the left and right sides of the label.

PRINCIPAL DISPLAY PANEL - 50 mg/200 mg/25 mg Tablet Bottle Label

NDC 61958-2501-05

30 tablets

3 cards containing

10 tablets each

Biktarvy®

(bictegravir, emtricitabine, and
tenofovir alafenamide) tablets

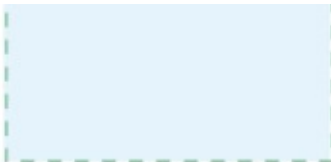
50 mg/200 mg/25 mg per tablet

GILEAD

Note to pharmacist: Do not cover ALERT box with pharmacy label.

**ALERT: Find out about medicines that should NOT be taken with Biktarvy
Rx only**

NDC 61958-2501-05



30 tablets
3 cards containing
10 tablets each

Biktarvy[®]
(bictegravir, emtricitabine, and
tenofovir alafenamide) tablets
50 mg/200 mg/25 mg per tablet



Note to pharmacist: Do not cover ALERT box with pharmacy label.

ALERT: Find out about medicines that should NOT be taken with Biktarvy

Rx only

PRINCIPAL DISPLAY PANEL - 30 mg/120 mg/15 mg Tablet Bottle Label

NDC 61958-2505-1

30 tablets

Biktarvy[®]
(bictegravir, emtricitabine,
and tenofovir alafenamide)
tablets
30 mg / 120 mg / 15 mg

Note to pharmacist:
Do not cover ALERT box with pharmacy label.

ALERT: Find out about medicines that
should NOT be taken with Biktarvy



PRINCIPAL DISPLAY PANEL - 30 mg/120 mg/15 mg Tablet Bottle Label - NDC 61958-2506

NDC 61958-2506-1

30 tablets

Biktarvy®

(bictegravir, emtricitabine,
and tenofovir alafenamide)
tablets

30 mg / 120 mg / 15 mg

Note to pharmacist:

Do not cover ALERT box with pharmacy label.

ALERT: Find out about medicines that
should NOT be taken with Biktarvy



BIKTARVY

bictegravir sodium, emtricitabine, and tenofovir alafenamide fumarate tablet

Product Information

Product Type	HUMAN PRESCRIPTION DRUG	Item Code (Source)	NDC:61958-2501
Route of Administration	ORAL		

Active Ingredient/Active Moiety

Ingredient Name	Basis of Strength	Strength
BICTEGRAVIR SODIUM (UNII: 4L5MP1Y7W7) (BICTEGRAVIR - UNII:8GB79LOJ07)	BICTEGRAVIR	50 mg
EMTRICITABINE (UNII: G70B4ETF4S) (EMTRICITABINE - UNII:G70B4ETF4S)	EMTRICITABINE	200 mg
TENOFOVIR ALAFENAMIDE FUMARATE (UNII: FWF6Q91TZO) (TENOFOVIR ANHYDROUS - UNII:W4HFE001U5)	TENOFOVIR ALAFENAMIDE	25 mg

Inactive Ingredients

Ingredient Name	Strength
MICROCRYSTALLINE CELLULOSE (UNII: OP1R32D61U)	
CROSCARMELOSE SODIUM (UNII: M28OL1HH48)	
MAGNESIUM STEARATE (UNII: 70097M6I30)	
WATER (UNII: 059QF0KO0R)	
POLYVINYL ALCOHOL, UNSPECIFIED (UNII: 532B59J990)	
TITANIUM DIOXIDE (UNII: 15FIX9V2JP)	
POLYETHYLENE GLYCOL, UNSPECIFIED (UNII: 3WJQ0SDW1A)	
TALC (UNII: 7SEV7J4R1U)	
FERROSO FERRIC OXIDE (UNII: XM0M87F357)	
FERRIC OXIDE RED (UNII: 1K09F3G675)	

Product Characteristics

Color	brown (purplish-brown)	Score	no score
Shape	OVAL (capsule-shaped)	Size	15mm
Flavor		Imprint Code	GSI;9883
Contains			

Packaging

#	Item Code	Package Description	Marketing Start Date	Marketing End Date
1	NDC:61958-2501-1	30 in 1 BOTTLE, PLASTIC; Type 0: Not a Combination Product	02/07/2018	
2	NDC:61958-2501-2	7 in 1 BOTTLE, PLASTIC; Type 0: Not a Combination Product	07/26/2018	
3	NDC:61958-2501-3	30 in 1 BLISTER PACK; Type 0: Not a Combination Product	08/24/2021	
4	NDC:61958-2501-5	30 in 1 BLISTER PACK; Type 0: Not a Combination Product	03/30/2026	

Marketing Information

Marketing Category	Application Number or Monograph Citation	Marketing Start Date	Marketing End Date
NDA	NDA210251	02/07/2018	

BIKTARVY

bictegravir sodium, emtricitabine, and tenofovir alafenamide fumarate tablet

Product Information

Product Type	HUMAN PRESCRIPTION DRUG	Item Code (Source)	NDC:61958-2505
Route of Administration	ORAL		

Active Ingredient/Active Moiety

Ingredient Name	Basis of Strength	Strength
BICTEGRAVIR SODIUM (UNII: 4L5MP1Y7W7) (BICTEGRAVIR - UNII:8GB79LOJ07)	BICTEGRAVIR	30 mg
EMTRICITABINE (UNII: G70B4ETF4S) (EMTRICITABINE - UNII:G70B4ETF4S)	EMTRICITABINE	120 mg
TENOFOVIR ALAFENAMIDE FUMARATE (UNII: FWF6Q91TZO) (TENOFOVIR ANHYDROUS - UNII:W4HFE001U5)	TENOFOVIR ALAFENAMIDE	15 mg

Inactive Ingredients

Ingredient Name	Strength
MICROCRYSTALLINE CELLULOSE (UNII: OP1R32D61U)	
CROSCARMELOSE SODIUM (UNII: M28OL1HH48)	
MAGNESIUM STEARATE (UNII: 70097M6I30)	
WATER (UNII: 059QF0KO0R)	
POLYVINYL ALCOHOL, UNSPECIFIED (UNII: 532B59J990)	
TITANIUM DIOXIDE (UNII: 15FIX9V2JP)	
POLYETHYLENE GLYCOL, UNSPECIFIED (UNII: 3WJQ0SDW1A)	
TALC (UNII: 7SEV7J4R1U)	
FERROSO FERRIC OXIDE (UNII: XM0M87F357)	
FERRIC OXIDE RED (UNII: 1K09F3G675)	

Product Characteristics

Color	PINK (pink)	Score	no score
Shape	OVAL (capsule-shaped)	Size	14mm
Flavor		Imprint Code	GSI;B
Contains			

Packaging

#	Item Code	Package Description	Marketing Start Date	Marketing End Date
---	-----------	---------------------	----------------------	--------------------

1	NDC:61958-2505-1	30 in 1 BOTTLE, PLASTIC; Type 0: Not a Combination Product	10/07/2021
---	------------------	--	------------

Marketing Information

Marketing Category	Application Number or Monograph Citation	Marketing Start Date	Marketing End Date
NDA	NDA210251	10/07/2021	

BIKTARVY

bictegravir sodium, emtricitabine, and tenofovir alafenamide fumarate tablet

Product Information

Product Type	HUMAN PRESCRIPTION DRUG	Item Code (Source)	NDC:61958-2506
Route of Administration	ORAL		

Active Ingredient/Active Moiety

Ingredient Name	Basis of Strength	Strength
BICTEGRAVIR SODIUM (UNII: 4L5MP1Y7W7) (BICTEGRAVIR - UNII:8GB79LOJ07)	BICTEGRAVIR	30 mg
EMTRICITABINE (UNII: G70B4ETF4S) (EMTRICITABINE - UNII:G70B4ETF4S)	EMTRICITABINE	120 mg
TENOFOVIR ALAFENAMIDE FUMARATE (UNII: FWF6Q91TZO) (TENOFOVIR ANHYDROUS - UNII:W4HFE001U5)	TENOFOVIR ALAFENAMIDE	15 mg

Inactive Ingredients

Ingredient Name	Strength
MICROCRYSTALLINE CELLULOSE (UNII: OP1R32D61U)	
CROSCARMELOSE SODIUM (UNII: M28OL1HH48)	
MAGNESIUM STEARATE (UNII: 70097M6I30)	
WATER (UNII: 059QF0KO0R)	
POLYVINYL ALCOHOL, UNSPECIFIED (UNII: 532B59J990)	
TITANIUM DIOXIDE (UNII: 15FIX9V2JP)	
POLYETHYLENE GLYCOL, UNSPECIFIED (UNII: 3WJQ0SDW1A)	
TALC (UNII: 7SEV7J4R1U)	
FERROSFERRIC OXIDE (UNII: XM0M87F357)	
FERRIC OXIDE RED (UNII: 1K09F3G675)	

Product Characteristics

Color	PINK	Score	score with uneven pieces
Shape	OVAL (capsule-shaped)	Size	14mm
Flavor		Imprint Code	BVY
Contains			

Packaging

#	Item Code	Package Description	Marketing Start Date	Marketing End Date
1	NDC:61958-2506-1	30 in 1 BOTTLE, PLASTIC; Type 0: Not a Combination Product	10/08/2024	

Marketing Information

Marketing Category	Application Number or Monograph Citation	Marketing Start Date	Marketing End Date
NDA	NDA210251	10/08/2024	

Labeler - Gilead Sciences, Inc. (185049848)

Revised: 3/2026

Gilead Sciences, Inc.