

# RIZATRIPTAN BENZOATE- rizatriptan benzoate tablet Bryant Ranch Prepack

## HIGHLIGHTS OF PRESCRIBING INFORMATION

These highlights do not include all the information needed to use RIZATRIPTAN BENZOATE TABLETS safely and effectively. See full prescribing information for RIZATRIPTAN BENZOATE TABLETS.

## RIZATRIPTAN BENZOATE tablets, for oral use

Initial U.S. Approval: 1998

## INDICATIONS AND USAGE

Rizatriptan benzoate tablets are a serotonin (5-HT)<sub>1B/1D</sub> receptor agonist (triptan) indicated for the acute treatment of migraine with or without aura in adults and in pediatric patients 6 to 17 years of age(1)

### Limitations of Use:

- Use only after clear diagnosis of migraine has been established (1)
- Not indicated for the prophylactic therapy of migraine (1)
- Not indicated for the treatment of cluster headache (1)

## DOSAGE AND ADMINISTRATION

- Adults: 5 or 10 mg single dose; separate repeat doses by at least two hours; maximum dose in a 24-hour period: 30 mg (2.1)
- Pediatric patients 6 to 17 years: 5 mg single dose in patients less than 40 kg (88 lb); 10 mg single dose in patients 40 kg (88 lb) or more (2.2)
- Adjust dose if co-administered with propranolol (2.4)

## DOSAGE FORMS AND STRENGTHS

Rizatriptan Benzoate Tablets, USP: 5 and 10 mg (3)

## CONTRAINDICATIONS

- History of ischemic heart disease or coronary artery vasospasm (4)
- History of stroke or transient ischemic attack (4)
- Peripheral vascular disease (4)
- Ischemic bowel disease (4)
- Uncontrolled hypertension (4)
- Recent (within 24 hours) use of another 5-HT<sub>1</sub> agonist (e.g., another triptan), or of an ergotamine-containing medication (4)
- Hemiplegic or basilar migraine (4)
- MAO-A inhibitor used in the past 2 weeks (4)
- Hypersensitivity to rizatriptan or any of the excipients (4)

## WARNINGS AND PRECAUTIONS

- Myocardial ischemia, myocardial infarction, and Prinzmetal's angina: Perform cardiac evaluation in patients with multiple cardiovascular risk factors (5.1)
- Arrhythmias: Discontinue dosing if occurs (5.2)
- Chest/throat/neck/jaw pain, tightness, pressure, or heaviness; Generally not associated with myocardial ischemia; Evaluate patients at high risk (5.3)
- Cerebral hemorrhage, subarachnoid hemorrhage, and stroke: Discontinue dosing if occurs (5.4)
- Gastrointestinal ischemic events, peripheral vasospastic reactions: Discontinue dosing if occurs (5.5)
- Medication overuse headache: Detoxification may be necessary (5.6)
- Serotonin syndrome: Discontinue dosing if occurs (5.7)

## ADVERSE REACTIONS

The most common adverse reactions in adults were (incidence  $\geq 5\%$  and greater than placebo):  
asthenia/fatigue, somnolence, pain/pressure sensation and dizziness (6.1)

To report SUSPECTED ADVERSE REACTIONS, contact Ascend Laboratories, LLC at 1-877-ASC-RX01 (877-272-7901) or FDA at 1-800-FDA-1088 or [www.fda.gov/medwatch](http://www.fda.gov/medwatch).

## USE IN SPECIFIC POPULATIONS

- Pregnancy: Based on animal data, may cause fetal harm (8.1)

See 17 for PATIENT COUNSELING INFORMATION.

Revised: 2/2021

---

## FULL PRESCRIBING INFORMATION: CONTENTS\*

### 1 INDICATIONS AND USAGE

### 2 DOSAGE AND ADMINISTRATION

- 2.1 Dosing Information in Adults
- 2.2 Dosing Information in Pediatric Patients (Age 6 to 17 Years)
- 2.4 Dosage Adjustment for Patients on Propranolol

### 3 DOSAGE FORMS AND STRENGTHS

### 4 CONTRAINDICATIONS

### 5 WARNINGS AND PRECAUTIONS

- 5.1 Myocardial Ischemia, Myocardial Infarction, and Prinzmetal's Angina
- 5.2 Arrhythmias
- 5.3 Chest, Throat, Neck and/or Jaw Pain/Tightness/Pressure
- 5.4 Cerebrovascular Events
- 5.5 Other Vasospasm Reactions
- 5.6 Medication Overuse Headache
- 5.7 Serotonin Syndrome
- 5.8 Increase in Blood Pressure

### 6 ADVERSE REACTIONS

- 6.1 Clinical Trials Experience
- 6.2 Postmarketing Experience

### 7 DRUG INTERACTIONS

- 7.1 Propranolol
- 7.2 Ergot-Containing Drugs
- 7.3 Other 5-HT<sub>1</sub> Agonists
- 7.4 SSRIs/SNRIs and Serotonin Syndrome
- 7.5 Monoamine Oxidase Inhibitors

### 8 USE IN SPECIFIC POPULATIONS

- 8.1 Pregnancy
- 8.2 Lactation
- 8.4 Pediatric Use
- 8.5 Geriatric Use

### 10 OVERDOSAGE

### 11 DESCRIPTION

### 12 CLINICAL PHARMACOLOGY

- 12.1 Mechanism of Action
- 12.3 Pharmacokinetics

## **13 NONCLINICAL TOXICOLOGY**

13.1 Carcinogenesis, Mutagenesis, Impairment of Fertility

## **14 CLINICAL STUDIES**

14.1 Adults

14.2 Pediatric Patients 6 to 17 Years of Age

## **16 HOW SUPPLIED/STORAGE AND HANDLING**

## **17 PATIENT COUNSELING INFORMATION**

\* Sections or subsections omitted from the full prescribing information are not listed.

---

## **FULL PRESCRIBING INFORMATION**

### **1 INDICATIONS AND USAGE**

Rizatriptan benzoate tablets are indicated for the acute treatment of migraine with or without aura in adults and in pediatric patients 6 to 17 years old.

#### Limitations of Use

- Rizatriptan benzoate tablets should only be used where a clear diagnosis of migraine has been established. If a patient has no response for the first migraine attack treated with rizatriptan benzoate tablets, the diagnosis of migraine should be reconsidered before rizatriptan benzoate tablets are administered to treat any subsequent attacks.
- Rizatriptan benzoate tablets are not indicated for use in the management of hemiplegic or basilar migraine [see *Contraindications (4)*].
- Rizatriptan benzoate tablets are not indicated for the prevention of migraine attacks.
- Safety and effectiveness of rizatriptan benzoate tablets have not been established for cluster headache.

### **2 DOSAGE AND ADMINISTRATION**

#### **2.1 Dosing Information in Adults**

The recommended starting dose of rizatriptan benzoate tablets are either 5 mg or 10 mg for the acute treatment of migraines in adults. The 10-mg dose may provide a greater effect than the 5-mg dose, but may have a greater risk of adverse reactions [see *Clinical Studies (14.1)*].

#### Redosing in Adults

Although the effectiveness of a second dose or subsequent doses has not been established in placebo-controlled trials, if the migraine headache returns, a second dose may be administered 2 hours after the first dose. The maximum daily dose should not exceed 30 mg in any 24-hour period. The safety of treating, on average, more than four headaches in a 30-day period has not been established.

#### **2.2 Dosing Information in Pediatric Patients (Age 6 to 17 Years)**

Dosing in pediatric patients is based on the patient's body weight. The recommended dose of rizatriptan benzoate tablets is 5 mg in patients weighing less than 40 kg (88 lb), and 10 mg in patients weighing 40 kg (88 lb) or more.

The efficacy and safety of treatment with more than one dose of rizatriptan benzoate tablet within 24 hours in pediatric patients 6 to 17 years of age have not been established.

## **2.4 Dosage Adjustment for Patients on Propranolol**

### Adult Patients

In adult patients taking propranolol, only the 5-mg dose of rizatriptan benzoate tablets are recommended, up to a maximum of 3 doses in any 24-hour period (15 mg) [see *Drug Interactions (7.1)* and *Clinical Pharmacology (12.3)*].

### Pediatric Patients

For pediatric patients weighing 40 kg (88 lb) or more, taking propranolol, only a single 5-mg dose of rizatriptan benzoate tablets is recommended (maximum dose of 5 mg in a 24-hour period). Rizatriptan benzoate tablets should not be prescribed to propranolol-treated pediatric patients who weigh less than 40 kg (88 lb) [see *Drug Interactions (7.1)* and *Clinical Pharmacology (12.3)*].

## **3 DOSAGE FORMS AND STRENGTHS**

### Rizatriptan benzoate Tablets, USP

- 5 mg tablets are white to off-white, capsule-shaped, compressed tablets debossed "RZT" on one side and "5" on other side.
- 10 mg tablets are white to off-white, capsule-shaped, compressed tablets debossed "RZT" on one side and "10" on other side.

## **4 CONTRAINDICATIONS**

Rizatriptan benzoate tablets are contraindicated in patients with:

- Ischemic coronary artery disease (angina pectoris, history of myocardial infarction, or documented silent ischemia), or other significant underlying cardiovascular disease [see *Warnings and Precautions (5.1)*].
- Coronary artery vasospasm including Prinzmetal's angina [see *Warnings and Precautions (5.1)*].
- History of stroke or transient ischemic attack (TIA) [see *Warnings and Precautions (5.4)*].
- Peripheral vascular disease (PVD) [see *Warnings and Precautions (5.5)*].
- Ischemic bowel disease [see *Warnings and Precautions (5.5)*].
- Uncontrolled hypertension [see *Warnings and Precautions (5.8)*].
- Recent use (i.e., within 24 hours) of another 5-HT<sub>1</sub> agonist, ergotamine-containing

medication, or ergot-type medication (such as dihydroergotamine or methysergide) [see *Drug Interactions (7.2 and 7.3)*].

- Hemiplegic or basilar migraine [see *Indications and Usage (1)*].
- Concurrent administration or recent discontinuation (i.e., within 2 weeks) of a MAO-A inhibitor [see *Drug Interactions (7.5) and Clinical Pharmacology (12.3)*].
- Hypersensitivity to rizatriptan or any of the excipients (angioedema and anaphylaxis seen) [see *Adverse Reactions (6.2)*].

## **5 WARNINGS AND PRECAUTIONS**

### **5.1 Myocardial Ischemia, Myocardial Infarction, and Prinzmetal's Angina**

Rizatriptan benzoate tablets should not be given to patients with ischemic or vasospastic coronary artery disease. There have been rare reports of serious cardiac adverse reactions, including acute myocardial infarction, occurring within a few hours following administration of rizatriptan benzoate tablets. Some of these reactions occurred in patients without known coronary artery disease (CAD). 5-HT<sub>1</sub> agonists, including rizatriptan benzoate tablets may cause coronary artery vasospasm (Prinzmetal's Angina), even in patients without a history of CAD.

Triptan-naïve patients who have multiple cardiovascular risk factors (e.g., increased age, diabetes, hypertension, smoking, obesity, strong family history of CAD) should have a cardiovascular evaluation prior to receiving rizatriptan benzoate tablets. If there is evidence of CAD or coronary artery vasospasm, rizatriptan benzoate tablets should not be administered [see *Contraindications (4)*]. For patients who have a negative cardiovascular evaluation, consideration should be given to administration of the first rizatriptan benzoate tablets dose in a medically supervised setting and performing an electrocardiogram (ECG) immediately following rizatriptan benzoate tablets administration. Periodic cardiovascular evaluation should be considered in intermittent long-term users of rizatriptan benzoate tablets who have cardiovascular risk factors.

### **5.2 Arrhythmias**

Life-threatening disturbances of cardiac rhythm, including ventricular tachycardia and ventricular fibrillation leading to death, have been reported within a few hours following the administration of 5-HT<sub>1</sub> agonists. Discontinue rizatriptan benzoate tablets if these disturbances occur.

### **5.3 Chest, Throat, Neck and/or Jaw Pain/Tightness/Pressure**

As with other 5-HT<sub>1</sub> agonists, sensations of tightness, pain, pressure, and heaviness in the precordium, throat, neck and jaw commonly occur after treatment with rizatriptan benzoate tablets and are usually non-cardiac in origin. However, if a cardiac origin is suspected, patients should be evaluated. Patients shown to have CAD and those with Prinzmetal's variant angina should not receive 5-HT<sub>1</sub> agonists.

### **5.4 Cerebrovascular Events**

Cerebral hemorrhage, subarachnoid hemorrhage, and stroke have occurred in patients treated with 5-HT<sub>1</sub> agonists, and some have resulted in fatalities. In a number of cases, it appears possible that the cerebrovascular events were primary, the 5-HT<sub>1</sub> agonist having been administered in the incorrect belief that the symptoms experienced were a consequence of migraine, when they were not. Also, patients with migraine may be at increased risk of certain cerebrovascular events (e.g., stroke, hemorrhage, transient ischemic attack). Discontinue rizatriptan benzoate tablets, USP if a cerebrovascular event occurs.

As with other acute migraine therapies, before treating headaches in patients not previously diagnosed as migraineurs, and in migraineurs who present with atypical symptoms, care should be taken to exclude other potentially serious neurological conditions. Rizatriptan benzoate tablets should not be administered to patients with a history of stroke or transient ischemic attack [see *Contraindications (4)*].

### **5.5 Other Vasospasm Reactions**

5-HT<sub>1</sub> agonists, including rizatriptan benzoate tablets, may cause non-coronary vasospastic reactions, such as peripheral vascular ischemia, gastrointestinal vascular ischemia and infarction (presenting with abdominal pain and bloody diarrhea), splenic infarction, and Raynaud's syndrome. In patients who experience symptoms or signs suggestive of non-coronary vasospasm reaction following the use of any 5-HT<sub>1</sub> agonist, the suspected vasospasm reaction should be ruled out before receiving additional rizatriptan benzoate tablets doses.

Reports of transient and permanent blindness and significant partial vision loss have been reported with the use of 5-HT<sub>1</sub> agonists. Since visual disorders may be part of a migraine attack, a causal relationship between these events and the use of 5-HT<sub>1</sub> agonists have not been clearly established.

### **5.6 Medication Overuse Headache**

Overuse of acute migraine drugs (e.g., ergotamine, triptans, opioids, or a combination of drugs for 10 or more days per month) may lead to exacerbation of headache (medication overuse headache). Medication overuse headache may present as migraine-like daily headaches, or as a marked increase in frequency of migraine attacks.

Detoxification of patients, including withdrawal of the overused drugs, and treatment of withdrawal symptoms (which often includes a transient worsening of headache) may be necessary.

### **5.7 Serotonin Syndrome**

Serotonin syndrome may occur with triptans, including rizatriptan benzoate tablets particularly during co-administration with selective serotonin reuptake inhibitors (SSRIs), serotonin norepinephrine reuptake inhibitors (SNRIs), tricyclic antidepressants (TCAs), and MAO inhibitors [see *Drug Interactions (7.5)*]. Serotonin syndrome symptoms may include mental status changes (e.g., agitation, hallucinations, coma), autonomic instability (e.g., tachycardia, labile blood pressure, hyperthermia), neuromuscular aberrations (e.g., hyperreflexia, incoordination) and/or gastrointestinal symptoms (e.g., nausea, vomiting, diarrhea). The onset of symptoms can occur within

minutes to hours of receiving a new or a greater dose of a serotonergic medication. Rizatriptan benzoate tablets treatment should be discontinued if serotonin syndrome is suspected [see *Drug Interactions (7.4) and Patient Counseling Information (17)*].

## 5.8 Increase in Blood Pressure

Significant elevation in blood pressure, including hypertensive crisis with acute impairment of organ systems, has been reported on rare occasions in patients with and without a history of hypertension receiving 5-HT<sub>1</sub> agonists, including rizatriptan benzoate tablets. In healthy young adult male and female patients who received maximal doses of rizatriptan benzoate tablets (10 mg every 2 hours for 3 doses), slight increases in blood pressure (approximately 2-3 mmHg) were observed. Rizatriptan benzoate tablets is contraindicated in patients with uncontrolled hypertension [see *Contraindications (4)*].

## 6 ADVERSE REACTIONS

The following adverse reactions are discussed in more detail in other sections of the labeling:

- Myocardial Ischemia, Myocardial Infarction, and Prinzmetal's Angina [see *Warnings and Precautions (5.1)*].
- Arrhythmias [see *Warnings and Precautions (5.2)*].
- Chest, Throat, Neck and/or Jaw Pain/Tightness/Pressure [see *Warnings and Precautions (5.3)*].
- Cerebrovascular Events [see *Warnings and Precautions (5.4)*].
- Other Vasospasm Reactions [see *Warnings and Precautions (5.5)*].
- Medication Overuse Headache [see *Warnings and Precautions (5.6)*].
- Serotonin Syndrome [see *Warnings and Precautions (5.7)*].
- Increase in Blood Pressure [see *Warnings and Precautions (5.8)*].

### 6.1 Clinical Trials Experience

Because clinical studies are conducted under widely varying conditions, adverse reaction rates observed in the clinical studies of a drug cannot be directly compared to rates in the clinical studies of another drug and may not reflect the rates observed in practice.

#### Adults

##### Incidence in Controlled Clinical Trials

Adverse reactions to rizatriptan benzoate tablets were assessed in controlled clinical trials that included over 3700 adult patients who received single or multiple doses of rizatriptan benzoate tablets. The most common adverse reactions during treatment with rizatriptan benzoate tablets ( $\geq 5\%$  in either treatment group and greater than placebo) were asthenia/fatigue, somnolence, pain/pressure sensation and dizziness. These adverse reactions appeared to be dose related.

Table 1 lists the adverse reactions (incidence  $\geq 2\%$  and greater than placebo) after a single dose of rizatriptan benzoate tablets in adults.

**Table 1: Incidence ( $\geq 2\%$  and Greater than Placebo) of Adverse Reactions After a Single Dose of Rizatriptan Benzoate Tablets or Placebo in Adults**

Adverse Reactions	% of Patients		
	Rizatriptan benzoate tablets 5 mg (N=977)	Rizatriptan benzoate tablets 10 mg (N=1167)	Placebo (N=627)
<i>Atypical Sensations</i>	4	5	4
Paresthesia	3	4	<2
<i>Pain and other Pressure Sensations</i>	6	9	3
Chest Pain:			
tightness/pressure and/or heaviness	<2	3	1
Neck/throat/jaw:			
pain/tightness/pressure	<2	2	1
Regional Pain:			
tightness/pressure and/or heaviness	<1	2	0
Pain, location unspecified	3	3	<2
<i>Digestive</i>	9	13	8
Dry Mouth	3	3	1
Nausea	4	6	4
<i>Neurological</i>	14	20	11
Dizziness	4	9	5
Headache	<2	2	<1
Somnolence	4	8	4
<i>Other</i>			
Asthenia/fatigue	4	7	2

The frequencies of adverse reactions in clinical trials did not increase when up to three doses were taken within 24 hours. Adverse reaction frequencies were also unchanged by concomitant use of drugs commonly taken for migraine prophylaxis (including propranolol), oral contraceptives, or analgesics. The incidences of adverse reactions were not affected by age or gender. There were insufficient data to assess the impact of race on the incidence of adverse reactions.

*Other Events Observed in Association with the Administration of Rizatriptan benzoate tablets in Adults*

In the following section, the frequencies of less commonly reported adverse events are presented that were not reported in other sections of the labeling. Because the reports include events observed in open studies, the role of rizatriptan benzoate tablets in their causation cannot be reliably determined. Furthermore, variability associated with adverse event reporting,



the terminology used to describe adverse events, limit the value of the quantitative frequency estimates provided. Event frequencies are calculated as the number of patients who used rizatriptan benzoate tablets and reported an event divided by the total number of patients exposed to rizatriptan benzoate tablets (N=3716). All reported events occurred at an incidence  $\geq 1\%$ , or are believed to be reasonably associated with the use of the drug. Events are further classified within body system categories and enumerated in order of decreasing frequency using the following definitions: frequent adverse events are those defined as those occurring in at least ( $>$ )1/100 patients; infrequent adverse experiences are those occurring in 1/100 to 1/1000 patients; and rare adverse experiences are those occurring in fewer than 1/1000 patients.

*General:* Infrequent was facial edema. Rare were syncope and edema/swelling.

*Atypical Sensations:* Frequent were warm sensations.

*Cardiovascular:* Frequent was palpitation. Infrequent were tachycardia, cold extremities, and bradycardia.

*Digestive:* Frequent were diarrhea and vomiting. Infrequent were dyspepsia, tongue edema and abdominal distention.

*Musculoskeletal:* Infrequent were muscle weakness, stiffness, myalgia and muscle cramp/spasm.

*Neurological/Psychiatric:* Frequent were hypoesthesia, euphoria and tremor. Infrequent were vertigo, insomnia, confusion/disorientation, gait abnormality, memory impairment, and agitation.

*Respiratory:* Frequent was dyspnea. Infrequent was pharyngeal edema.

*Special Senses:* Infrequent were blurred vision and tinnitus. Rare was eye swelling.

*Skin and Skin Appendage:* Frequent was flushing. Infrequent were sweating, pruritus, rash, and urticaria. Rare was erythema, hot flashes.

The adverse reaction profile seen with rizatriptan benzoate orally disintegrating tablets was similar to that seen with rizatriptan benzoate tablets.

## **Pediatric Patients 6 to 17 Years of Age**

### *Incidence in Controlled Clinical Trials in Pediatric Patients*

Adverse reactions to rizatriptan benzoate orally disintegrating tablets were assessed in a controlled clinical trial in the acute treatment of migraines (Study 7) that included a total of 1382 pediatric patients 6-17 years of age, of which 977 (72%) administered at least one dose of study treatment (rizatriptan benzoate orally disintegrating tablets and/or placebo) [see *Clinical Studies (14.2)*]. The incidence of adverse reactions reported for pediatric patients in the acute clinical trial was similar in patients who received rizatriptan benzoate tablet to those who received placebo. The adverse reaction pattern in pediatric patients is expected to be similar to that in adults.

### *Other Events Observed in Association with the Administration of Rizatriptan benzoate orally disintegrating tablets in Pediatric Patients*

In the following section, the frequencies of less commonly reported adverse events are presented. Because the reports include events observed in open studies, the role of rizatriptan benzoate orally disintegrating tablets in their causation cannot be reliably determined. Furthermore, variability associated with adverse event reporting, the terminology used to describe adverse events, limit the value of the quantitative frequency estimates provided.

Event frequencies are calculated as the number of pediatric patients 6 to 17 years of age who used rizatriptan benzoate orally disintegrating tablets and reported an event divided by the total number of patients exposed to rizatriptan benzoate orally disintegrating tablets (N=1068). All reported events occurred at an incidence  $\geq 1\%$ , or are believed to be reasonably associated with the use of the drug. Events are further classified within system organ class and enumerated in order of decreasing frequency using the following definitions: frequent adverse events are those occurring in ( $>$ )1/100 pediatric patients; infrequent adverse experiences are those occurring in 1/100 to 1/1000 pediatric patients; and rare adverse experiences are those occurring in fewer than 1/1000 patients.

*General:* Frequent was fatigue.

*Ear and labyrinth disorders:* Infrequent was hypoacusis.

*Gastrointestinal disorders:* Frequent was abdominal discomfort.

*Nervous system disorders:* Infrequent were coordination abnormal, disturbance in attention, and presyncope.

*Psychiatric disorders:* Infrequent was hallucination.

## **6.2 Postmarketing Experience**

The following section enumerates potentially important adverse events that have occurred in clinical practice and which have been reported spontaneously to various surveillance systems. The events enumerated include all except those already listed in other sections of the labeling or those too general to be informative. Because the reports cite events reported spontaneously from worldwide postmarketing experience, frequency of events and the role of rizatriptan benzoate tablets in their causation cannot be reliably determined.

*Neurological/Psychiatric:* Seizure.

*General:* Allergic conditions including anaphylaxis/anaphylactoid reaction, angioedema, wheezing, and toxic epidermal necrolysis [see *Contraindications (4)*].

*Special Senses:* Dysgeusia.

## **7 DRUG INTERACTIONS**

### **7.1 Propranolol**

The dose of rizatriptan benzoate tablets should be adjusted in propranolol-treated patients, as propranolol has been shown to increase the plasma AUC of rizatriptan by 70% [see *Dosage and Administration (2.4)* and *Clinical Pharmacology (12.3)*].

## 7.2 Ergot-Containing Drugs

Ergot-containing drugs have been reported to cause prolonged vasospastic reactions. Because these effects may be additive, use of ergotamine-containing or ergot-type medications (like dihydroergotamine or methysergide) and rizatriptan benzoate tablets within 24 hours is contraindicated [see *Contraindications (4)*].

## 7.3 Other 5-HT<sub>1</sub> Agonists

Because their vasospastic effects may be additive, co-administration of rizatriptan benzoate tablets and other 5-HT<sub>1</sub> agonists within 24 hours of each other is contraindicated [see *Contraindications (4)*].

## 7.4 SSRIs/SNRIs and Serotonin Syndrome

Cases of serotonin syndrome have been reported during co-administration of triptans and selective serotonin reuptake inhibitors (SSRIs) or serotonin norepinephrine reuptake inhibitors (SNRIs) [see *Warnings and Precautions (5.7)*].

## 7.5 Monoamine Oxidase Inhibitors

Rizatriptan benzoate tablets is contraindicated in patients taking MAO-A inhibitors and non-selective MAO inhibitors. A specific MAO-A inhibitor increased the systemic exposure of rizatriptan and its metabolite [see *Contraindications (4) and Clinical Pharmacology (12.3)*].

# 8 USE IN SPECIFIC POPULATIONS

## 8.1 Pregnancy

### Risk Summary

Available human data on the use of rizatriptan benzoate tablets in pregnant women are not sufficient to draw conclusions about drug-associated risk for major birth defects and miscarriage.

In animal studies, developmental toxicity was observed following oral administration of rizatriptan during pregnancy (decreased fetal body weight in rats) or throughout pregnancy and lactation (increased mortality, decreased body weight, and neurobehavioral impairment in rat offspring) at maternal plasma exposures greater than that expected at therapeutic doses in humans [see *Animal Data*].

In the U.S. general population, the estimated background risk of major birth defects and of miscarriage in clinically recognized pregnancies is 2% to 4% and 15% to 20%, respectively. The reported rate of major birth defects among deliveries to women with migraine range from 2.2% to 2.9% and the reported rate of miscarriage was 17%, which are similar to rates reported in women without migraine.

## Clinical Considerations

### *Disease-Associated Maternal and/or Embryo/Fetal Risk*

In women with migraine, there is an increased risk of adverse perinatal outcomes in the mother, including pre-eclampsia and gestational hypertension.

### Data

#### *Human Data*

The Pregnancy Registry for rizatriptan benzoate tablets did not identify any pattern of congenital anomalies or other adverse birth outcomes over the period of 1998 to 2018. However, the lack of identification of any pattern should be viewed with caution, as the number of prospective reports with outcome information was low and did not provide sufficient power to detect an increased risk of individual birth defects associated with the use of rizatriptan benzoate tablets. Additionally, there was significant loss to follow-up in the prospective pregnancy reports, further complicating this assessment of an association between rizatriptan benzoate tablets and any pattern of congenital anomalies or other adverse birth outcomes.

In a study using data from the Swedish Medical Birth Register, live births to women who reported using triptans or ergots during pregnancy were compared with those of women who did not. Of the 157 births with first-trimester exposure to rizatriptan, 7 infants were born with malformations (relative risk 1.01 [95% CI: 0.40 to 2.08]). A study using linked data from the Medical Birth Registry of Norway to the Norwegian Prescription Database compared pregnancy outcomes in women who redeemed prescriptions for triptans during pregnancy, as well as a migraine disease comparison group who redeemed prescriptions for triptans before pregnancy only, compared with a population control group. Of the 310 women who redeemed prescriptions for rizatriptan during the first trimester, 10 had infants with major congenital malformations (OR 1.03 [95% CI: 0.55 to 1.93]), while for the 271 women who redeemed prescriptions for rizatriptan before, but not during, pregnancy, 12 had infants with major congenital malformations (OR 1.48 [95% CI: 0.83 to 2.64]), each compared with the population comparison group.

#### *Animal Data*

When rizatriptan (0, 2, 10, or 100 mg/kg/day) was administered orally to pregnant rats throughout organogenesis, a decrease in fetal body weight was observed at the highest doses tested. At the mid dose (10 mg/kg/day), which was a no-effect dose for adverse effects on embryofetal development, plasma exposure (AUC) was approximately 15 times that in humans at the maximum recommended human dose (MRHD) of 30 mg/day. When rizatriptan (0, 5, 10, or 50 mg/kg/day) was administered orally to pregnant rabbits throughout organogenesis, no adverse fetal effects were observed. Plasma exposure (AUC) at the highest dose tested was 115 times that in humans at the MRHD. Placental transfer of drug to the fetus was demonstrated in both species.

Oral administration of rizatriptan (0, 2, 10, or 100 mg/kg/day) to female rats prior to and during mating and continuing throughout gestation and lactation resulted in reduced body weight in offspring from birth and throughout lactation at all but the lowest dose tested (2 mg/kg/day). Plasma exposure (AUC) at the no-effect dose (2 mg/kg/day) for adverse effects on postnatal development was similar to that in humans at the MRHD.

Oral administration of rizatriptan (0, 5, 100, or 250 mg/kg/day) throughout organogenesis and lactation resulted in neonatal mortality, reduced body weight (which persisted into adulthood), and impaired neurobehavioral function in offspring at all but

the lowest dose tested. Plasma exposure (AUC) at the no-effect dose for adverse effects on postnatal development (5 mg/kg/day) was approximately 8 times that in humans at the MRHD.

## **8.2 Lactation**

### Risk Summary

There are no data on the presence of rizatriptan or any active metabolites in human milk, or on the effects of rizatriptan on the breastfed infant, or on milk production.

Rizatriptan was excreted in rat milk, with levels in milk approximately 6 times those in maternal plasma.

The developmental and health benefits of breastfeeding should be considered along with the mother's clinical need for rizatriptan benzoate and any potential adverse effects on the breastfed infant from rizatriptan benzoate from the underlying maternal condition.

### Data

Following oral administration of rizatriptan to lactating rats at a dose of 100 mg/kg/day, drug concentrations of rizatriptan in milk samples exceeded maternal plasma drug concentrations by approximately 6-fold.

## **8.4 Pediatric Use**

Safety and effectiveness in pediatric patients under 6 years of age have not been established.

The efficacy and safety of rizatriptan benzoate tablets in the acute treatment of migraine in patients aged 6 to 17 years was established in an adequate and well-controlled study [*see Clinical Studies (14.2)*].

The incidence of adverse reactions reported for pediatric patients in the acute clinical trial was similar in patients who received rizatriptan benzoate tablets to those who received placebo. The adverse reaction pattern in pediatric patients is expected to be similar to that in adults.

## **8.5 Geriatric Use**

Clinical studies of rizatriptan benzoate tablets did not include sufficient numbers of subjects aged 65 and over to determine whether they respond differently from younger subjects. Other reported clinical experience has not identified differences in responses between the elderly and younger patients.

Although the pharmacokinetics of rizatriptan were similar in elderly (aged  $\geq 65$  years) and in younger adults (n=17), in general, dose selection for an elderly patient should be cautious, starting at the low end of the dosing range. This reflects the greater frequency of decreased hepatic, renal, or cardiac function, and of concomitant disease or other drug therapy.

Geriatric patients who have other cardiovascular risk factors (e.g., diabetes, hypertension, smoking, obesity, strong family history of coronary artery disease) should have a cardiovascular evaluation prior to receiving rizatriptan benzoate tablets [*see Warnings and Precautions (5.1)*].

## 10 OVERDOSAGE

No overdoses of rizatriptan benzoate tablets were reported during clinical trials in adults. Some adult patients who received 40 mg of rizatriptan benzoate tablets either a single dose or as two doses with a 2-hour interdose interval had dizziness and somnolence. In a clinical pharmacology study in which 12 adult subjects received rizatriptan benzoate tablets, at total cumulative doses of 80 mg (given within four hours), two of the subjects experienced syncope, dizziness, bradycardia including third degree AV block, vomiting, and/or incontinence.

In the long-term, open label study, involving 606 treated pediatric migraineurs 12 to 17 years of age (of which 432 were treated for at least 12 months), 151 patients (25%) took two 10-mg doses of rizatriptan benzoate orally disintegrating tablets within a 24-hour period. Adverse reactions for 3 of these patients included abdominal discomfort, fatigue, and dyspnea.

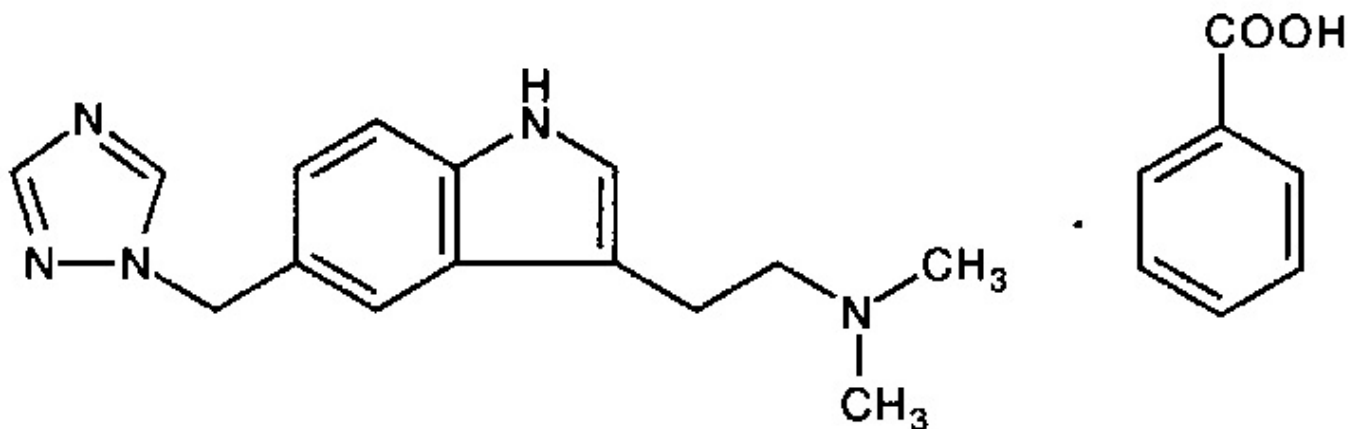
In addition, based on the pharmacology of rizatriptan benzoate tablets, hypertension or myocardial ischemia could occur after overdosage. Gastrointestinal decontamination, (i.e., gastric lavage followed by activated charcoal) should be considered in patients suspected of an overdose with rizatriptan benzoate tablets. Clinical and electrocardiographic monitoring should be continued for at least 12 hours, even if clinical symptoms are not observed.

The effects of hemo- or peritoneal dialysis on serum concentrations of rizatriptan are unknown.

## 11 DESCRIPTION

Rizatriptan benzoate tablet, USP contains rizatriptan benzoate, a selective 5-hydroxytryptamine<sub>1B/1D</sub> (5-HT<sub>1B/1D</sub>) receptor agonist.

Rizatriptan benzoate is described chemically as: *N,N*-dimethyl-5-(1*H*-1,2,4-triazol-1-ylmethyl)-1*H*-indole-3-ethanamine monobenzoate and its structural formula is:



Its empirical formula is  $C_{15}H_{19}N_5 \cdot C_7H_6O_2$ , representing a molecular weight of the free base of 269.4. Rizatriptan benzoate is a white to off-white, crystalline solid that is soluble in water at about 42 mg per mL (expressed as free base) at 25°C.

Rizatriptan benzoate Tablets, USP are available for oral administration in strengths of 5 and 10 mg (corresponding to 7.265 mg or 14.53 mg of the benzoate salt, respectively). Each compressed tablet contains the following inactive ingredients: lactose monohydrate, microcrystalline cellulose, pregelatinized starch (maize), and magnesium stearate.

## 12 CLINICAL PHARMACOLOGY

### 12.1 Mechanism of Action

Rizatriptan binds with high affinity to human cloned 5-HT<sub>1B/1D</sub> receptors. Rizatriptan benzoate tablets presumably exerts its therapeutic effects in the treatment of migraine headache by binding to 5-HT<sub>1B/1D</sub> receptors located on intracranial blood vessels and sensory nerves of the trigeminal system.

### 12.3 Pharmacokinetics

#### *Absorption*

Rizatriptan is completely absorbed following oral administration. The mean oral absolute bioavailability of the rizatriptan benzoate tablet is about 45%, and mean peak plasma concentrations ( $C_{max}$ ) are reached in approximately 1-1.5 hours ( $T_{max}$ ). The presence of a migraine headache did not appear to affect the absorption or pharmacokinetics of rizatriptan. Food has no significant effect on the bioavailability of rizatriptan but delays the time to reach peak concentration by an hour. In clinical trials, rizatriptan benzoate tablets was administered without regard to food.

The bioavailability and  $C_{max}$  of rizatriptan were similar following administration of rizatriptan benzoate tablets and rizatriptan benzoate orally disintegrating tablets, but the

rate of absorption is somewhat slower with rizatriptan benzoate orally disintegrating tablets, with  $T_{max}$  delayed by up to 0.7 hour. AUC of rizatriptan is approximately 30% higher in females than in males. No accumulation occurred on multiple dosing.

### *Distribution*

The mean volume of distribution is approximately 140 liters in male subjects and 110 liters in female subjects. Rizatriptan is minimally bound (14%) to plasma proteins.

### *Metabolism*

The primary route of rizatriptan metabolism is via oxidative deamination by monoamine oxidase-A (MAO-A) to the indole acetic acid metabolite, which is not active at the 5-HT<sub>1B/1D</sub> receptor. N-monodesmethyl-rizatriptan, a metabolite with activity similar to that of parent compound at the 5-HT<sub>1B/1D</sub> receptor, is formed to a minor degree. Plasma concentrations of N-monodesmethyl-rizatriptan are approximately 14% of those of parent compound, and it is eliminated at a similar rate. Other minor metabolites, the N-oxide, the 6-hydroxy compound, and the sulfate conjugate of the 6-hydroxy metabolite are not active at the 5-HT<sub>1B/1D</sub> receptor.

### *Elimination*

The total radioactivity of the administered dose recovered over 120 hours in urine and feces was 82% and 12%, respectively, following a single 10-mg oral administration of <sup>14</sup>C-rizatriptan. Following oral administration of <sup>14</sup>C-rizatriptan, rizatriptan accounted for about 17% of circulating plasma radioactivity. Approximately 14% of an oral dose is excreted in urine as unchanged rizatriptan while 51% is excreted as indole acetic acid metabolite, indicating substantial first pass metabolism.

The plasma half-life of rizatriptan in males and females averages 2-3 hours.

### Cytochrome P450 Isoforms

Rizatriptan is not an inhibitor of the activities of human liver cytochrome P450 isoforms 3A4/5, 1A2, 2C9, 2C19, or 2E1; rizatriptan is a competitive inhibitor ( $K_i=1400$  nM) of cytochrome P450 2D6, but only at high, clinically irrelevant concentrations.

### Special Populations

*Geriatric:* Rizatriptan pharmacokinetics in healthy elderly non-migraineur volunteers (age 65-77 years) were similar to those in younger non-migraineur volunteers (age 18-45 years).

*Pediatric:* The pharmacokinetics of rizatriptan was determined in pediatric migraineurs 6 to 17 years of age. Exposures following single dose administration of 5 mg rizatriptan benzoate orally disintegrating tablets to pediatric patients weighing 20-39 kg (44-87 lb) or 10 mg rizatriptan benzoate orally disintegrating tablets to pediatric patients weighing  $\geq 40$  kg (88 lb) were similar to those observed following single dose administration of 10 mg rizatriptan benzoate orally disintegrating tablets to adults.

*Gender:* The mean  $AUC_{0-\infty}$  and  $C_{max}$  of rizatriptan (10 mg orally) were about 30% and 11% higher in females as compared to males, respectively, while  $T_{max}$  occurred at approximately the same time.

*Hepatic impairment:* Following oral administration in patients with hepatic impairment



caused by mild to moderate alcoholic cirrhosis of the liver, plasma concentrations of rizatriptan were similar in patients with mild hepatic insufficiency compared to a control group of subjects with normal hepatic function; plasma concentrations of rizatriptan were approximately 30% greater in patients with moderate hepatic insufficiency.

**Renal impairment:** In patients with renal impairment (creatinine clearance 10-60 mL/min/1.73 m<sup>2</sup>), the AUC<sub>0-∞</sub> of rizatriptan was not significantly different from that in subjects with normal renal function. In hemodialysis patients, (creatinine clearance <2 mL/min/1.73 m<sup>2</sup>), however, the AUC for rizatriptan was approximately 44% greater than that in patients with normal renal function.

**Race:** Pharmacokinetic data revealed no significant differences between African American and Caucasian subjects.

### Drug Interactions

*[See also Drug Interactions (7).]*

**Monoamine oxidase inhibitors:** Rizatriptan is principally metabolized via monoamine oxidase, 'A' subtype (MAO-A). Plasma concentrations of rizatriptan may be increased by drugs that are selective MAO-A inhibitors (e.g., moclobemide) or nonselective MAO inhibitors [type A and B] (e.g., isocarboxazid, phenelzine, tranylcypromine, and pargyline). In a drug interaction study, when rizatriptan benzoate tablets 10 mg was administered to subjects (n=12) receiving concomitant therapy with the selective, reversible MAO-A inhibitor, moclobemide 150 mg t.i.d., there were mean increases in rizatriptan AUC and C<sub>max</sub> of 119% and 41% respectively; and the AUC of the active N-monodesmethyl metabolite of rizatriptan was increased more than 400%. The interaction would be expected to be greater with irreversible MAO inhibitors. No pharmacokinetic interaction is anticipated in patients receiving selective MAO-B inhibitors *[see Contraindications (4) and Drug Interactions (7.5)].*

**Propranolol:** In a study of concurrent administration of propranolol 240 mg/day and a single dose of rizatriptan 10 mg in healthy adult subjects (n=11), mean plasma AUC for rizatriptan was increased by 70% during propranolol administration, and a four-fold increase was observed in one subject. The AUC of the active N-monodesmethyl metabolite of rizatriptan was not affected by propranolol *[see Dosage and Administration (2.4) and Drug Interactions (7.1)].*

**Nadolol/Metoprolol:** In a drug interactions study, effects of multiple doses of nadolol 80 mg or metoprolol 100 mg every 12 hours on the pharmacokinetics of a single dose of 10 mg rizatriptan were evaluated in healthy subjects (n=12). No pharmacokinetic interactions were observed.

**Paroxetine:** In a study of the interaction between the selective serotonin reuptake inhibitor (SSRI) paroxetine 20 mg/day for two weeks and a single dose of rizatriptan benzoate tablets 10 mg in healthy subjects (n=12), neither the plasma concentrations of rizatriptan nor its safety profile were affected by paroxetine *[see Warnings and Precautions (5.7), Drug Interactions (7.4), and Patient Counseling Information (17)].*

**Oral contraceptives:** In a study of concurrent administration of an oral contraceptive during 6 days of administration of rizatriptan benzoate tablets (10 mg/day to 30 mg/day) in healthy female volunteers (n=18), rizatriptan did not affect plasma concentrations of ethinyl estradiol or norethindrone.

## **13 NONCLINICAL TOXICOLOGY**

### **13.1 Carcinogenesis, Mutagenesis, Impairment of Fertility**

#### Carcinogenesis

Oral carcinogenicity studies of rizatriptan were conducted in mice (100 weeks) and rats (106 weeks) at doses of up to 125 mg/kg/day. Plasma exposures (AUC) at the highest dose tested were approximately 150 (mice) and 240 times (rats) that in humans at the maximum recommended human dose (MRHD) of 30 mg/day. There was no evidence of an increase in tumor incidence related to rizatriptan in either species.

#### Mutagenesis

Rizatriptan was neither mutagenic nor clastogenic in a battery of *in vitro* and *in vivo* genetic toxicity studies, including: the microbial mutagenesis (Ames) assay, *in vitro* mammalian cell mutagenesis and chromosomal aberration assays, and the *in vivo* chromosomal aberration assay in mouse.

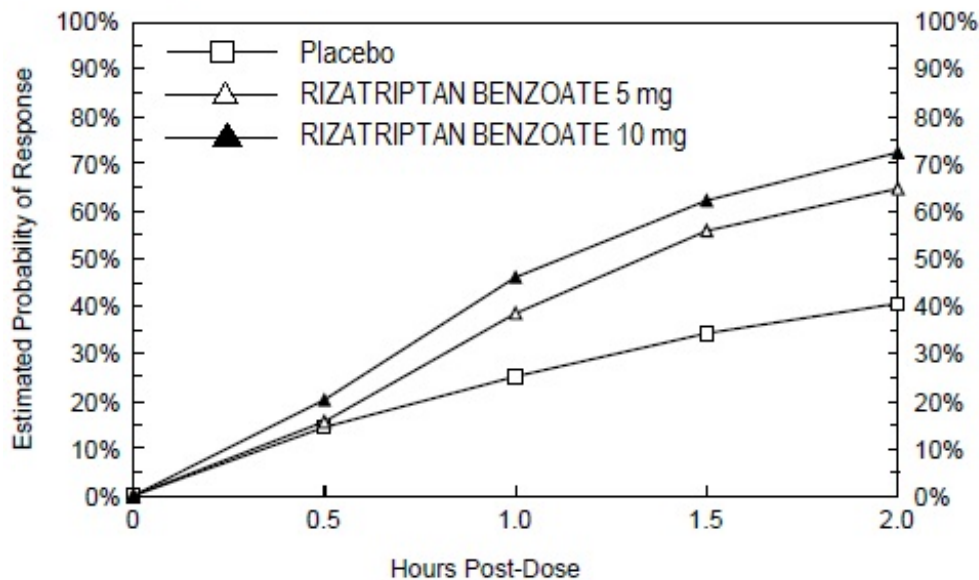
#### Impairment of Fertility

Oral administration of rizatriptan (0, 2, 10, or 100 mg/kg/day) to female rats prior to and during mating and continuing throughout gestation and lactation resulted in no effect on fertility; however, altered estrous cyclicity and delays in time to mating were observed at the highest dose tested. Plasma exposure at the no-effect dose (10 mg/kg/day) for reproductive toxicity was approximately 15 times that in humans at the MRHD.

Oral administration of rizatriptan (0, 5, 35, or 250 mg/kg/day) to male rats prior to and during mating resulted in no impairment of fertility or reproductive performance. Plasma exposure (AUC) at the highest dose tested was approximately 550 times that in humans at the MRHD.

## **14 CLINICAL STUDIES**

### **14.1 Adults**



The efficacy of rizatriptan benzoate tablets was established in four multicenter, randomized, placebo-controlled trials. Patients enrolled in these studies were primarily female (84%) and Caucasian (88%), with a mean age of 40 years (range of 18 to 71). Patients were instructed to treat a moderate to severe headache. Headache response, defined as a reduction of moderate or severe headache pain to no or mild headache pain, was assessed for up to 2 hours (Study 1) or up to 4 hours after dosing (Studies 2, 3 and 4). Associated symptoms of nausea, photophobia, and phonophobia and maintenance of response up to 24 hours post-dose were evaluated. A second dose of rizatriptan benzoate tablets was allowed 2 to 24 hours after dosing for treatment of recurrent headache in Studies 1 and 2. Additional analgesics and/or antiemetics were allowed 2 hours after initial treatment for rescue in all four studies. In all studies, the percentage of patients achieving headache response 2 hours after treatment was significantly greater in patients who received either rizatriptan benzoate tablets 5 or 10 mg compared to those who received placebo. In a separate study, doses of 2.5 mg were not different from placebo. Doses greater than 10 mg were associated with an increased incidence of adverse effects. The results from the four controlled studies are summarized in Table 2.

**Table 2: Response Rates 2 Hours Following Treatment of Initial Headache in Studies 1, 2, 3, and 4**

Study	Placebo	Rizatriptan Benzoate Tablets 5 mg	Rizatriptan Benzoate Tablets 10 mg
1	35% (n=304)	62%* (n=458)	71%*,† (n=456)
2‡	37% (n=82)	--	77%* (n=320)
3	23% (n=80)	63%* (n=352)	--
4	40% (n=159)	60%* (n=164)	67%* (n=385)

\*p-value <0.05 in comparison with placebo.

†p-value <0.05 in comparison with 5 mg.

‡Results for initial headache only.

Comparisons of drug performance based upon results obtained in different clinical trials may not be reliable. Because studies are conducted at different times, with different samples of patients, by different investigators, employing different criteria and/or different interpretations of the same criteria, under different conditions (dose, dosing regimen, etc.), quantitative estimates of treatment response and the timing of response may be expected to vary considerably from study to study.

The estimated probability of achieving an initial headache response within 2 hours following treatment in pooled Studies 1, 2, 3, and 4 is depicted in Figure 1.

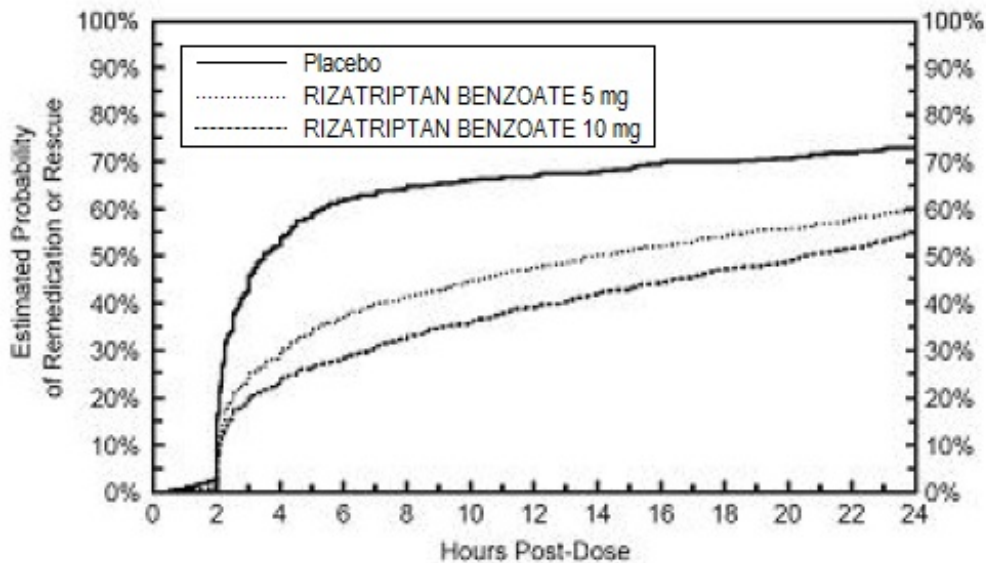
Figure 1: Estimated Probability of Achieving an Initial Headache Response by 2 Hours in Pooled Studies 1, 2, 3, and 4\*

\*Figure 1 shows the Kaplan-Meier plot of the probability over time of obtaining headache response (no or mild pain) following treatment with rizatriptan benzoate tablets or placebo. The averages displayed are based on pooled data from 4 placebo-controlled, outpatient trials providing evidence of efficacy (Studies 1, 2, 3, and 4). Patients taking additional treatment or not achieving headache response prior to 2 hours were censored at 2 hours.

For patients with migraine-associated photophobia, phonophobia, and nausea at baseline, there was a decreased incidence of these symptoms following administration of rizatriptan benzoate tablets compared to placebo.

Two to 24 hours following the initial dose of study treatment, patients were allowed to use additional treatment for pain response in the form of a second dose of study treatment or other medication. The estimated probability of patients taking a second dose or other medication for migraine over the 24 hours following the initial dose of study treatment is summarized in Figure 2.

Figure 2: Estimated Probability of Patients Taking a Second Dose of Rizatriptan benzoate Tablets, USP or Other Medication for Migraines Over the 24 Hours Following the Initial Dose of Study Treatment in Pooled Studies 1, 2, 3, and 4\*



\*This Kaplan-Meier plot is based on data obtained in 4 placebo-controlled outpatient clinical trials (Studies 1, 2, 3, and 4). Patients not using additional treatments were censored at 24 hours. The plot includes both patients who had headache response at 2 hours and those who had no response to the initial dose. Remedication was not allowed within 2 hours post- dose.

Efficacy was unaffected by the presence of aura; by the gender, or age of the patient; or by concomitant use of common migraine prophylactic drugs (e.g., beta-blockers, calcium channel blockers, tricyclic antidepressants) or oral contraceptives. In two additional similar studies, efficacy was unaffected by relationship to menses. There were insufficient data to assess the impact of race on efficacy.

## 14.2 Pediatric Patients 6 to 17 Years of Age

The efficacy of rizatriptan benzoate orally disintegrating tablets in pediatric patients 6 to 17 years was evaluated in a multicenter, randomized, double-blind, placebo-controlled, parallel group clinical trial (Study 7). Patients had to have at least a 6-month history of migraine attacks (with or without aura) usually lasting 3 hours or more (when untreated). The patient population was historically non-responsive to NSAIDs and acetaminophen therapy.

Patients were instructed to treat a single migraine attack with headache pain of moderate to severe intensity. The treatment phase of the study had two stages. Stage 1 was used to identify placebo non-responders, who then entered into Stage 2, in which patients were randomized to rizatriptan benzoate orally disintegrating tablets or placebo. Using a weight-based dosing strategy, patients 20 kg to <40 kg (44 lb to <88 lb) received rizatriptan benzoate orally disintegrating tablets 5 mg or placebo, and patients  $\geq$ 40 kg (88 lb) received rizatriptan benzoate orally disintegrating tablets 10 mg or placebo.

The mean age for the studied patient population was 13 years. Sixty-one percent of the

patients were Caucasian, and fifty-six percent of the patients were female. The percentage of patients achieving the primary efficacy endpoint of no headache pain at 2 hours after treatment was significantly greater in patients who received rizatriptan benzoate orally disintegrating tablets, compared with those who received placebo (33% vs. 24%). Study 7 results are summarized in Table 4.

**Table 4: Response Rates 2 Hours Following Treatment of Initial Headache in Pediatric Patients 6 to 17 Years of Age in Study 7**

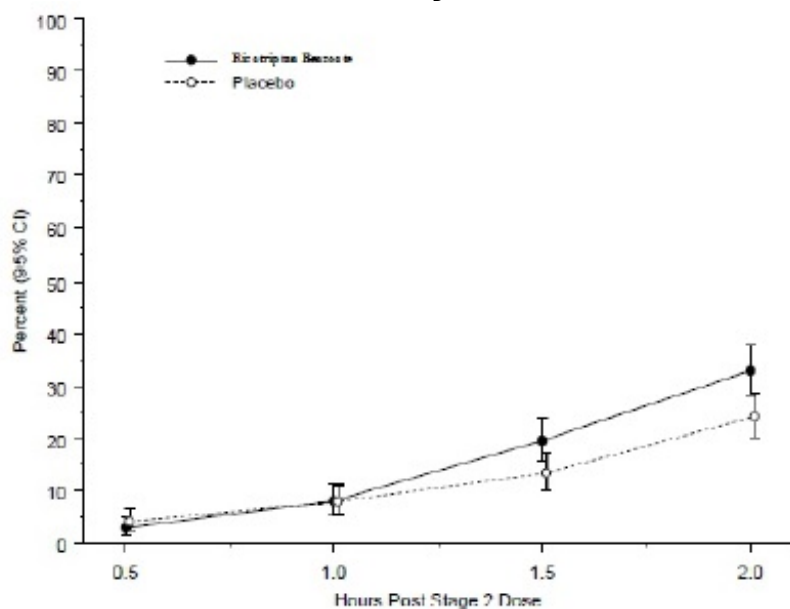
Endpoint	Placebo	Rizatriptan benzoate orally disintegrating tablets	p-Value
No headache pain at 2 hours post-dose	24% (n/m=94/388)	33% (n/m=126/382)	0.01

n = Number of evaluable patients with no headache pain at 2 hours post-dose.

m = Number of evaluable patients in population.

The observed percentage of pediatric patients achieving no headache pain within 2 hours following initial treatment with rizatriptan benzoate orally disintegrating tablets is shown in Figure 5.

**Figure 5: Observed Percentage of Patients Reporting No Headache Pain by 2 Hours Post-Dose in Study 7**



The prevalence of the exploratory endpoints of absence of migraine-associated symptoms (nausea, photophobia, and phonophobia) at 2 hours after taking the dose was not statistically significantly different between patients who received rizatriptan

benzoate orally disintegrating tablets and those who received placebo.

## **16 HOW SUPPLIED/STORAGE AND HANDLING**

NDC: 71335-2031-1: 30 Tablets in a BOTTLE

NDC: 71335-2031-2: 18 Tablets in a BOTTLE

## **17 PATIENT COUNSELING INFORMATION**

Advise the patient to read the FDA-approved patient labeling (Patient Information).

### *Risk of Myocardial Ischemia and/or Infarction, Prinzmetal's Angina, Other Vasospasm-Related Events, and Cerebrovascular Events*

Inform patients that rizatriptan benzoate tablets, USP may cause serious cardiovascular side effects such as myocardial infarction or stroke. Although serious cardiovascular events can occur without warning symptoms, patients should be alert for the signs and symptoms of chest pain, shortness of breath, weakness, slurring of speech, and should ask for medical advice when observing any indicative sign or symptoms. Patients should be apprised of the importance of this follow-up [see *Warnings and Precautions (5.1, 5.2, 5.4, 5.5)*].

### *Serotonin Syndrome*

Patients should be cautioned about the risk of serotonin syndrome with the use of rizatriptan benzoate tablets or other triptans, particularly during combined use with selective serotonin reuptake inhibitors (SSRIs) or serotonin norepinephrine reuptake inhibitors (SNRIs) [see *Warnings and Precautions (5.7), Drug Interactions (7.4), and Clinical Pharmacology (12.3)*].

### *Pregnancy*

Inform patients that rizatriptan benzoate tablets should not be used during pregnancy unless the potential benefit justifies the potential risk to the fetus [see *Use in Specific Populations (8.1)*].

### *Lactation*

Advise patients to notify their healthcare provider if they are breastfeeding or plan to breastfeed [see *Use in Specific Populations (8.2)*].

### *Ability to Perform Complex Tasks*

Since migraines or treatment with rizatriptan benzoate tablets may cause somnolence and dizziness, instruct patients to evaluate their ability to perform complex tasks during migraine attacks and after administration of rizatriptan benzoate tablets, USP.

### *Medication Overuse Headache*

Inform patients that use of acute migraine drugs for 10 or more days per month may lead to an exacerbation of headache, and encourage patients to record headache frequency and drug use (e.g., by keeping a headache diary) [see *Warnings and Precautions (5.6)*].

### **Manufactured in India by:**

Alkem Laboratories Limited  
H.O.: ALKEM HOUSE,  
Senapati Bapat Marg, Lower Parel,  
Mumbai – 400 013, INDIA

**Distributed by:**

Ascend Laboratories, LLC

Parsippany, NJ 07054

Revised: February, 2021

Patient Information

**RIZATRIPTAN BENZOATE TABLETS, USP  
5 mg and 10 mg**

Read this Patient Information before you start taking rizatriptan benzoate tablets and each time you get a refill. There may be new information. This information does not take the place of talking to your doctor about your medical condition or your treatment. Unless otherwise stated, the information in this Patient Information leaflet applies to both rizatriptan benzoate tablets and to rizatriptan benzoate orally disintegrating tablets.

**What is rizatriptan benzoate, USP ?**

Rizatriptan benzoate tablets, USP is a prescription medicine that belongs to a class of medicines called Triptans.

Rizatriptan benzoate tablets is available as a traditional tablet and as an orally disintegrating tablet.

Rizatriptan benzoate tablet are used to treat migraine attacks with or without aura in adults and in children 6 to 17 years of age.

Rizatriptan benzoate tablets is not to be used to prevent migraine attacks.

Rizatriptan benzoate tablets is not for the treatment of hemiplegic or basilar migraines.

It is not known if rizatriptan benzoate tablets is safe and effective for the treatment of cluster headaches.

It is not known if taking more than 1 dose of rizatriptan benzoate tablet in 24 hours is safe and effective in children 6 to 17 years of age.

It is not known if rizatriptan benzoate tablet is safe and effective in children under 6 years of age.

**Who should not take rizatriptan benzoate tablets?****Do not take rizatriptan benzoate tablets if you:**

- have or have had heart problems



- have or have had a stroke or a transient ischemic attack (TIA)
- have or have had blood vessel problems including ischemic bowel disease
- have uncontrolled high blood pressure
- have taken other Triptan medicines in the last 24 hours
- have taken ergot-containing medicines in the last 24 hours
- have hemiplegic or basilar migraines
- take monoamine oxidase (MAO) inhibitor or have taken a MAO inhibitor within the last 2 weeks
- are allergic to rizatriptan benzoate or any of the ingredients in rizatriptan benzoate tablets, USP. See the end of this leaflet for a complete list of ingredients in rizatriptan benzoate tablets.

Talk to your doctor before taking this medicine if you have any of the conditions listed above or if you are not sure if you take any of these medicines.

### **What should I tell my doctor before taking rizatriptan benzoate tablets?**

**Before you take rizatriptan benzoate tablets**, tell your doctor if you:

- have or have had heart problems, high blood pressure, chest pain, or shortness of breath
- have any risk factors for heart problems or blood vessel problems such as:
  - high blood pressure
  - high cholesterol
  - smoking
  - obesity
  - diabetes
  - family history of heart problems
  - you are post menopausal
  - you are a male over 40
- have kidney or liver problems
- have any other medical condition
- are pregnant or plan to become pregnant. It is not known if rizatriptan benzoate tablets will harm your unborn baby. If you become pregnant while taking rizatriptan benzoate tablets, talk to your healthcare provider.
- are breastfeeding or plan to breastfeed. It is not known if rizatriptan benzoate passes into your breast milk. Talk to your doctor about the best way to feed your baby if you take rizatriptan benzoate tablets.

**Tell your doctor about all the medicines you take**, including prescription and nonprescription medicines, vitamins, and herbal supplements.

Rizatriptan benzoate tablets and other medicines may affect each other causing side effects.

Rizatriptan benzoate tablets may affect the way other medicines work, and other

medicines may affect how rizatriptan benzoate tablets works.

### **Especially tell your doctor if you take:**

- propranolol containing medicines such as Inderal<sup>®</sup>, Inderal<sup>®</sup> LA, or Innopran<sup>®</sup> XL
- medicines used to treat mood disorders, including selective serotonin reuptake inhibitors (SSRIs) or serotonin norepinephrine reuptake inhibitors (SNRIs).

Ask your doctor or pharmacist for a list of these medicines, if you are not sure.

Know the medicines you take. Keep a list of them to show your doctor and pharmacist when you get a new medicine.

### **How should I take rizatriptan benzoate tablets?**

- Take rizatriptan benzoate tablets exactly as your doctor tells you to take it.
- Your doctor will tell you how much rizatriptan benzoate tablets to take and when to take it.
- If your headache comes back after your first rizatriptan benzoate tablets dose:
  - For adults: a second dose may be taken 2 hours after the first dose. Do not take more than 30 mg of rizatriptan benzoate tablets in a 24-hour period (for example, do not take more than 3 10-mg tablets in a 24-hour period).
  - For children 6 to 17 years of age: It is not known if taking more than 1 dose of rizatriptan benzoate tablets in 24 hours is safe and effective. Talk to your doctor about what to do if your headache does not go away or comes back.
- If you take too much rizatriptan benzoate tablets, call your doctor or go to the nearest hospital emergency room right away.

### **What should I avoid while taking rizatriptan benzoate tablets?**

Rizatriptan benzoate tablets may cause dizziness, weakness, or fainting. If you have these symptoms, do not drive a car, use machinery, or do anything that needs you to be alert.

### **What are the possible side effects of rizatriptan benzoate tablets?**

**Rizatriptan benzoate tablets may cause serious side effects.** Call your doctor or go to the nearest hospital emergency room right away if you think you are having any of the serious side effects of rizatriptan benzoate tablets including:

- **heart attack.** Symptoms of a heart attack may include:
  - chest discomfort in the center of your chest that lasts for more than a few minutes or that goes away and comes back
  - chest discomfort that feels like uncomfortable pressure, squeezing, fullness or pain
  - pain or discomfort in your arms, back, neck, jaw or stomach
  - shortness of breath with or without chest discomfort
  - breaking out in a cold sweat
  - nausea or vomiting
  - feeling lightheaded

- **stroke.** Symptoms of a stroke may include the following sudden symptoms:
  - numbness or weakness in your face, arm or leg, especially on one side of your body
  - confusion, problems speaking or understanding
  - problems seeing in 1 or both of your eyes
  - problems walking, dizziness, loss of balance or coordination
  - severe headache with no known cause
- **blood vessel problems.** Symptoms of blood vessel problems may include:
  - stomach pain
  - bloody diarrhea
  - vision problems
  - coldness and numbness of hands and feet
- **serotonin syndrome.** A condition called serotonin syndrome can happen when Triptan medicines such as rizatriptan benzoate tablets are taken with certain other medicines. Symptoms of serotonin syndrome may include:
  - agitation
  - hallucinations
  - coma
  - fast heartbeat
  - fast changes in your blood pressure
  - increased body temperature
  - muscle spasm
  - loss of coordination
  - nausea, vomiting or diarrhea
- **increased blood pressure.**

The most common side effects of rizatriptan benzoate tablets in adults include:

- feeling sleepy or tired
- pain or pressure in your chest or throat
- dizziness

Tell your doctor if you have any side effect that bothers you or that does not go away.

If you take rizatriptan benzoate tablets too often, this may result in you getting chronic headaches. In such cases, you should contact your doctor, as you may have to stop taking rizatriptan benzoate tablets.

These are not all the possible side effects of rizatriptan benzoate tablets. For more information, ask your doctor or pharmacist.

Call your doctor for medical advice about side effects. You may report side effects to FDA at 1-800-FDA-1088.

### **How should I store rizatriptan benzoate tablets?**

- Store rizatriptan benzoate tablets at 20° to 25°C (68° to 77°F) [see USP Controlled Room Temperature].

- Safely throw away medicine that is out of date or no longer needed.

**Keep rizatriptan benzoate tablets and all medicines out of the reach of children.**

**General Information about the safe and effective use of rizatriptan benzoate tablets.**

Medicines are sometimes prescribed for purposes other than those listed in a Patient Information leaflet. Do not use rizatriptan benzoate tablets for a condition for which it was not prescribed. Do not give rizatriptan benzoate tablets to other people, even if they have the same symptoms that you have. It may harm them.

This Patient Information leaflet summarizes the most important information about rizatriptan benzoate tablets. If you would like more information, talk to your doctor. You can ask your pharmacist or doctor for information about rizatriptan benzoate tablets that is written for health professionals.

For more information contact Ascend Laboratories, LLC at 1-877-ASC-RX01 (877-272-7901)

**What are the ingredients in rizatriptan benzoate tablets?**

**Active ingredient in rizatriptan benzoate tablets:**

rizatriptan benzoate.

**Inactive ingredients in rizatriptan benzoate tablets:** lactose monohydrate, microcrystalline cellulose, pregelatinized starch (maize), and magnesium stearate.

The brands listed are the trademarks of their respective owners.

This Patient Information has been approved by the U.S. Food and Drug Administration.

**Manufactured in India by:**

Alkem Laboratories Limited  
H.O.: ALKEM HOUSE,  
Senapati Bapat Marg, Lower Parel,  
Mumbai - 400 013, INDIA

**Distributed by:**

Ascend Laboratories, LLC

Parsippany, NJ 07054

Revised: February, 2021

PT 2719-04

# Rizatriptan Benzoate 5mg Tablet



GTIN 00371335203115  
Lot 208620  
Exp 3/21/2025  
SN 0123456789

Each tablet contains: Rizatriptan Benzoate, USP 5 mg

Keep this and all drugs out of the reach of children.

Store at 20° to 25° C (68° to 77° F); excursions permitted to 15° to 30° C (59° to 86° F) (see USP controlled Room Temperature).

NDC 71335-2031-1

Rizatriptan Benzoate  
Tablets, USP

5 mg



Repackaged by:  
Bryant Ranch Prepack, Inc.  
Burbank, CA 91504 USA

Rx only  
**30 Tablets**  
Manufactured by:  
Alkem Laboratories  
Limited



## RIZATRIPTAN BENZOATE

rizatriptan benzoate tablet

### Product Information

Product Type	HUMAN PRESCRIPTION DRUG	Item Code (Source)	NDC:71335-2031(NDC:67877-261)
Route of Administration	ORAL		

### Active Ingredient/Active Moiety

Ingredient Name	Basis of Strength	Strength
RIZATRIPTAN BENZOATE (UNII: WR978S7QHH) (RIZATRIPTAN - UNII:51086HBW8G)	RIZATRIPTAN	5 mg

### Inactive Ingredients

Ingredient Name	Strength
LACTOSE MONOHYDRATE (UNII: EWQ57Q8I5X)	
MICROCRYSTALLINE CELLULOSE (UNII: OP1R32D61U)	
STARCH, CORN (UNII: O8232NY3SJ)	
MAGNESIUM STEARATE (UNII: 70097M6I30)	

### Product Characteristics

Color	WHITE (White to Off-White)	Score	no score
Shape	CAPSULE	Size	10mm
Flavor		Imprint Code	RZT;5
Contains			

## Packaging

#	Item Code	Package Description	Marketing Start Date	Marketing End Date
1	NDC:71335-2031-1	30 in 1 BOTTLE; Type 0: Not a Combination Product	02/10/2022	
2	NDC:71335-2031-2	18 in 1 BOTTLE; Type 0: Not a Combination Product	02/10/2022	

## Marketing Information

Marketing Category	Application Number or Monograph Citation	Marketing Start Date	Marketing End Date
ANDA	ANDA203269	06/25/2012	

**Labeler** - Bryant Ranch Prepack (171714327)

**Registrant** - Bryant Ranch Prepack (171714327)

## Establishment

Name	Address	ID/FEI	Business Operations
Bryant Ranch Prepack		171714327	REPACK(71335-2031) , RELABEL(71335-2031)

Revised: 3/2023

Bryant Ranch Prepack