

# SOTALOL HYDROCHLORIDE- sotalol hydrochloride tablet

Mylan Pharmaceuticals Inc.

-----

## HIGHLIGHTS OF PRESCRIBING INFORMATION

These highlights do not include all the information needed to use SOTALOL HYDROCHLORIDE TABLETS (AF) safely and effectively. See full prescribing information for SOTALOL HYDROCHLORIDE TABLETS (AF).

SOTALOL HYDROCHLORIDE tablets (AF), for oral use

Initial U.S. Approval: 1992

### WARNING: LIFE THREATENING PROARRHYTHMIA

*See full prescribing information for complete boxed warning.*

- Sotalol hydrochloride tablets (AF) can cause life threatening ventricular tachycardia associated with QT interval prolongation.
- If the QT interval prolongs to 500 msec or greater, reduce the dose, lengthen the dosing interval, or discontinue the drug.
- Initiate or reinstate in a facility that can provide cardiac resuscitation and continuous electrocardiographic monitoring.
- Adjust the dosing interval based on creatinine clearance.

## INDICATIONS AND USAGE

Sotalol hydrochloride tablets (AF) are an antiarrhythmic indicated for:

- the treatment of life threatening ventricular arrhythmias (1.1)
- the maintenance of normal sinus rhythm in patients with atrial fibrillation or flutter (AFIB/AFL) (1.2)

### Limitations of Use

- Avoid use in patients with asymptomatic ventricular premature contraction (1.1)
- Avoid use in patients with minimally symptomatic or easily reversible AFIB/AFL (1.2)

## DOSAGE AND ADMINISTRATION

- Sotalol hydrochloride tablets (AF): Initial dosage in adults is 80 mg twice daily. Increase the dose as needed in increments of 80 mg/day, every 3 days to a maximum 320 mg total daily dose (2.2)
- Pediatrics: Dosage depends on age (2.4)

## DOSAGE FORMS AND STRENGTHS

80 mg, 120 mg and 160 mg tablets (3)

## CONTRAINDICATIONS

For the treatment of AFIB/AFL or ventricular arrhythmias

- Sinus bradycardia, 2nd or 3rd degree AV block, sick sinus syndrome (4)
- Congenital or acquired long QT syndrome (4)
- Serum potassium < 4 mEq/L (4)
- Cardiogenic shock, decompensated heart failure (4)
- Bronchial asthma or related bronchospastic conditions (4)
- Hypersensitivity to sotalol (4)

For the treatment of AFIB/AFL also contraindicated for:

- QT interval > 450 ms (4)
- Creatine clearance < 40 mL/min (4)

## WARNINGS AND PRECAUTIONS

- QT prolongation, bradycardia, AV block, hypotension, worsening heart failure: Reduce dose or discontinue (5.1)

- Acute exacerbation of coronary artery disease upon cessation of therapy: Do not abruptly discontinue (5.5)
- Correct any electrolyte disturbances (5.1)
- May mask symptoms of hypoglycemia or worsen hyperglycemia in diabetic patients; monitor (5.7)

----- **ADVERSE REACTIONS** -----

The most common adverse reactions ( $\geq 2\%$ ) for sotalol hydrochloride tablets are: fatigue 4%, bradycardia (less than 50 bpm) 3%, dyspnea 3%, proarrhythmia 3%, asthenia 2%, and dizziness 2%. (6)

**To report SUSPECTED ADVERSE REACTIONS, contact Mylan at 1-877-446-3679 (1-877-4-INFO-RX) or FDA at 1-800-FDA-1088 or [www.fda.gov/medwatch](http://www.fda.gov/medwatch).**

----- **DRUG INTERACTIONS** -----

- Class I or III Antiarrhythmics or other drugs that prolong the QT interval: Avoid concomitant use (7.1)
- Digoxin, calcium channel blocker: increased risk of bradycardia, hypotension, heart failure (7.2)
- Dosage of insulin or antidiabetic drugs may need adjustment (7.5)
- Aluminum or magnesium-based antacids reduce sotalol exposure (7.7)

See 17 for **PATIENT COUNSELING INFORMATION**.

**Revised: 8/2018**

**FULL PRESCRIBING INFORMATION: CONTENTS\***

**WARNING: LIFE THREATENING PROARRHYTHMIA**

**1 INDICATIONS AND USAGE**

- 1.1 Life-Threatening Ventricular Arrhythmias
- 1.2 Delay in Recurrence of Atrial Fibrillation/Atrial Flutter (AFIB/AFL)

**2 DOSAGE AND ADMINISTRATION**

- 2.1 General Safety Measures for Initiation of Oral Sotalol Therapy
- 2.2 Adult Dose for Ventricular Arrhythmias
- 2.3 Adult Dose for Prevention of Recurrence of AFIB/AFL
- 2.4 Pediatric Dose for Ventricular Arrhythmias or AFIB/AFL
- 2.5 Dosage for Patients with Renal Impairment
- 2.6 Preparation of Extemporaneous Oral Solution

**3 DOSAGE FORMS AND STRENGTHS**

**4 CONTRAINDICATIONS**

**5 WARNINGS AND PRECAUTIONS**

- 5.1 QT Prolongation and Proarrhythmia
- 5.2 Bradycardia/Heart Block/Sick Sinus Syndrome
- 5.3 Hypotension
- 5.4 Heart Failure
- 5.5 Cardiac Ischemia after Abrupt Discontinuation
- 5.6 Bronchospasm
- 5.7 Masked Signs of Hypoglycemia in Diabetics
- 5.8 Thyroid Abnormalities
- 5.9 Anaphylaxis
- 5.10 Major Surgery

**6 ADVERSE REACTIONS**

- 6.1 Clinical Trials Experience
- 6.2 Postmarketing Experience

**7 DRUG INTERACTIONS**

- 7.1 Antiarrhythmics and other QT Prolonging Drugs
- 7.2 Digoxin
- 7.3 Calcium-Channel Blocking Drugs
- 7.4 Catecholamine-Depleting Agents

7.5 Insulin and Oral Antidiabetics

7.6 Clonidine

7.7 Antacids

## **8 USE IN SPECIFIC POPULATIONS**

8.1 Pregnancy

8.3 Nursing Mothers

8.4 Pediatric Use

8.6 Renal Impairment

## **10 OVERDOSAGE**

## **11 DESCRIPTION**

## **12 CLINICAL PHARMACOLOGY**

12.1 Mechanism of Action

12.2 Pharmacodynamics

12.3 Pharmacokinetics

## **13 NONCLINICAL TOXICOLOGY**

13.1 Carcinogenesis, Mutagenesis, Impairment of Fertility

## **14 CLINICAL STUDIES**

14.1 Ventricular Arrhythmias

14.2 Clinical Studies in Supra-ventricular Arrhythmias

14.3 Clinical Studies in Patients with Myocardial Infarction

## **16 HOW SUPPLIED/STORAGE AND HANDLING**

## **17 PATIENT COUNSELING INFORMATION**

\* Sections or subsections omitted from the full prescribing information are not listed.

---

## **FULL PRESCRIBING INFORMATION**

### **WARNING: LIFE THREATENING PROARRHYTHMIA**

**To minimize the risk of drug-induced arrhythmia, initiate or reinstate oral sotalol in a facility that can provide cardiac resuscitation and continuous electrocardiographic monitoring.**

**Sotalol can cause life threatening ventricular tachycardia associated with QT interval prolongation.**

**If the QT interval prolongs to 500 msec or greater, reduce the dose, lengthen the dosing interval, or discontinue the drug.**

**Calculate creatinine clearance to determine appropriate dosing [see *Dosage and Administration (2.5)*].**

## **1 INDICATIONS AND USAGE**

### **1.1 Life-Threatening Ventricular Arrhythmias**

Sotalol hydrochloride tablets (AF) are indicated for the treatment of life-threatening, documented ventricular arrhythmias, such as sustained ventricular tachycardia (VT).

#### ***Limitation of Use***

Sotalol hydrochloride tablets (AF) may not enhance survival in patients with ventricular arrhythmias. Because of the proarrhythmic effects of sotalol hydrochloride tablets (AF), including a 1.5 to 2% rate

of Torsade de Pointes (TdP) or new ventricular tachycardia/fibrillation (VT/VF) in patients with either non-sustained ventricular tachycardia (NSVT) or supraventricular arrhythmias (SVT), its use in patients with less severe arrhythmias, even if the patients are symptomatic, is generally not recommended. Avoid treatment of patients with asymptomatic ventricular premature contractions [see *Warnings and Precautions (5.2)*].

## **1.2 Delay in Recurrence of Atrial Fibrillation/Atrial Flutter (AFIB/AFL)**

Sotalol hydrochloride tablets (AF) are indicated for the maintenance of normal sinus rhythm (delay in time to recurrence of AFIB/AFL) in patients with symptomatic AFIB/AFL who are currently in sinus rhythm.

### ***Limitation of Use***

Because sotalol hydrochloride tablets (AF) can cause life-threatening ventricular arrhythmias, reserve its use for patients in whom AFIB/AFL is highly symptomatic. Patients with paroxysmal AFIB that is easily reversed (by Valsalva maneuver, for example) should usually not be given sotalol hydrochloride tablets (AF).

## **2 DOSAGE AND ADMINISTRATION**

### **2.1 General Safety Measures for Initiation of Oral Sotalol Therapy**

Withdraw other antiarrhythmic therapy before starting sotalol hydrochloride tablets (AF) and monitor carefully for a minimum of 2 to 3 plasma half-lives if the patient's clinical condition permits [see *Drug Interactions (7)*].

Hospitalize patients initiated or re-initiated on sotalol for at least 3 days or until steady-state drug levels are achieved, in a facility that can provide cardiac resuscitation and continuous electrocardiographic monitoring. Initiate oral sotalol therapy in the presence of personnel trained in the management of serious arrhythmias. Perform a baseline ECG to determine the QT interval and measure and normalize serum potassium and magnesium levels before initiating therapy. Measure serum creatinine and calculate an estimated creatinine clearance in order to establish the appropriate dosing interval (insert cross ref to renal dosing). Continually monitor patients with each up-titration in dose, until they reach steady state. Determine QTc 2 to 4 hours after every dose.

Discharge patients on sotalol therapy from an in-patient setting with an adequate supply of sotalol to allow uninterrupted therapy until the patient can fill a sotalol prescription.

Advise patients who miss a dose to take the next dose at the usual time. Do not double the dose or shorten the dosing interval.

### **2.2 Adult Dose for Ventricular Arrhythmias**

The recommended initial dose is 80 mg twice daily. This dose may be increased in increments of 80 mg per day every 3 days provided the QTc < 500 msec [see *Warnings and Precautions (5.1)*]. Continually monitor patients until steady state blood levels are achieved. In most patients, a therapeutic response is obtained at a total daily dose of 160 to 320 mg/day, given in two or three divided doses (because of the long terminal elimination half-life of sotalol, dosing more than two times a day is usually not necessary). Oral doses as high as 480-640 mg/day have been utilized in patients with refractory life-threatening arrhythmias.

### **2.3 Adult Dose for Prevention of Recurrence of AFIB/AFL**

The recommended initial dose is 80 mg twice daily. This dose may be increased in increments of 80 mg per day every 3 days provided the QTc < 500 msec [see *Warnings and Precautions (5.1)*]. Continually monitor patients until steady state blood levels are achieved. Most patients will have satisfactory response with 120 mg twice daily. Initiation of sotalol in patients with creatinine clearance < 40 ml/min

or  $\hat{Q}Tc > 450$  is contraindicated [see Contraindication (4)].

## 2.4 Pediatric Dose for Ventricular Arrhythmias or AFIB/AFL

Use the same precautionary measures for children as you would use for adults when initiating and re-initiating sotalol treatment.

### ***For Children Aged About 2 years and Older***

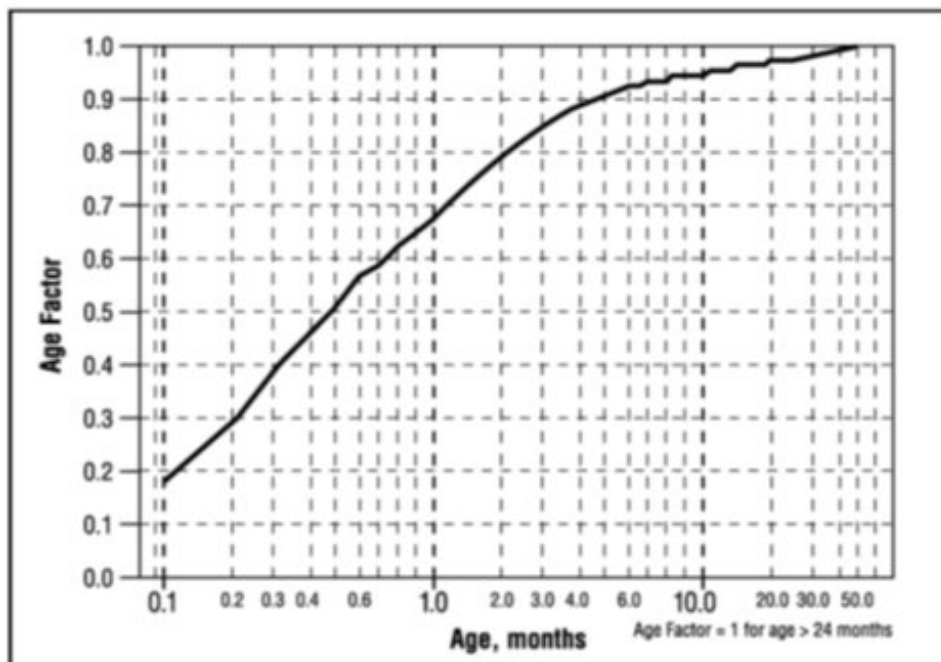
For children aged about 2 years and older, with normal renal function, doses normalized for body surface area are appropriate for both initial and incremental dosing. Since the Class III potency in children is not very different from that in adults, reaching plasma concentrations that occur within the adult dose range is an appropriate guide [see *Clinical Pharmacology (12.1, 12.3)*].

From pediatric pharmacokinetic data the following is recommended:

For initiation of treatment, 30 mg/m<sup>2</sup> three times a day (90 mg/m<sup>2</sup> total daily dose) is approximately equivalent to the initial 160 mg total daily dose for adults. Subsequent titration to a maximum of 60 mg/m<sup>2</sup> (approximately equivalent to the 360 mg total daily dose for adults) can then occur. Titration should be guided by clinical response, heart rate and QTc, with increased dosing being preferably carried out in-hospital. At least 36 hours should be allowed between dose increments to attain steady-state plasma concentrations of sotalol in patients with age-adjusted normal renal function.

### ***For Children Aged About 2 Years or Younger***

For children aged about 2 years or younger, the above pediatric dosage should be reduced by a factor that depends heavily upon age, as shown in the following graph, age plotted on a logarithmic scale in months.



For a child aged 20 months, the dosing suggested for children with normal renal function aged 2 years or greater should be multiplied by about 0.97; the initial starting dose would be  $(30 \times 0.97) = 29.1$  mg/m<sup>2</sup>, administered three times daily. For a child aged 1 month, the starting dose should be multiplied by 0.68; the initial starting dose would be  $(30 \times 0.68) = 20$  mg/m<sup>2</sup>, administered three times daily. For a child aged about 1 week, the initial starting dose should be multiplied by 0.3; the starting dose would be  $(30 \times 0.3) = 9$  mg/m<sup>2</sup>. Use similar calculations for dose titration.

Since the half-life of sotalol decreases with decreasing age (below about 2 years), time to steady-state will also increase. Thus, in neonates the time to steady-state may be as long as a week or longer.

## 2.5 Dosage for Patients with Renal Impairment

### Adults

Use of sotalol in any age group with decreased renal function should be at lower doses or increased intervals between doses. It will take much longer to reach steady-state with any dose and/or frequency of administration. Closely monitor heart rate and QTc.

Dose escalations in renal impairment should be done after administration of at least 5 doses at appropriate intervals (Table 1). Sotalol is partly removed by dialysis; specific advice is unavailable on dosing patients on dialysis.

The initial dose of 80 mg and subsequent doses should be administered at the intervals listed in Table 1 or Table 2.

**Table 1: Dosing Intervals for Treatment of Ventricular Arrhythmias in Renal Impairment**

Creatinine Clearance mL/min	Dosing Interval (hours)
> 60	12
30–59	24
10–29	36–48
< 10	Dose should be individualized

**Table 2: Dosing Intervals for Treatment of AFIB/AFL in Renal Impairment**

Creatinine Clearance mL/min	Dosing Interval (hours)
> 60	12
40–59	24
< 40	Contraindicated

## 2.6 Preparation of Extemporaneous Oral Solution

Sotalol Hydrochloride (AF) Syrup 5 mg/mL can be compounded using Simple Syrup containing 0.1% sodium benzoate (Syrup, NF) as follows:

1. Measure 120 mL of Simple Syrup.
2. Transfer the syrup to a 6-ounce amber plastic (polyethylene terephthalate [PET]) prescription bottle. An oversized bottle is used to allow for a headspace, so that there will be more effective mixing during shaking of the bottle.
3. Add five (5) sotalol hydrochloride 120 mg tablets (AF) to the bottle. These tablets are added intact; it is not necessary to crush the tablets. The addition of the tablets can also be done first. The tablets can also be crushed if preferred. If the tablets are crushed, care should be taken to transfer the entire quantity of tablet powder into the bottle containing the syrup.
4. Shake the bottle to wet the entire surface of the tablets. If the tablets have been crushed, shake the bottle until the endpoint is achieved.
5. Allow the tablets to hydrate for at least two hours.
6. After at least two hours have elapsed, shake the bottle intermittently over the course of at least another two hours until the tablets are completely disintegrated. The tablets can be allowed to hydrate overnight to simplify the disintegration process.

The endpoint is achieved when a dispersion of fine particles in the syrup is obtained.

This compounding procedure results in a solution containing 5 mg/mL of sotalol HCl. The fine solid particles are the water-insoluble inactive ingredients of the tablets.

Stability studies indicate that the suspension is stable for three months when stored at 20° to 25°C (68° to 77°F) [see USP Controlled Room Temperature] and ambient humidity.

### 3 DOSAGE FORMS AND STRENGTHS

Sotalol Hydrochloride Tablets, USP (AF) are available containing 80 mg, 120 mg or 160 mg of sotalol hydrochloride, USP.

- The 80 mg tablets are light orange, round, scored tablets debossed with **M** above the score and **S23** below the score on one side of the tablet and blank on the other side.
- The 120 mg tablets are light orange, round, scored tablets debossed with **M** above the score and **S24** below the score on one side of the tablet and blank on the other side.
- The 160 mg tablets are light orange, round, scored tablets debossed with **M** above the score and **S25** below the score on one side of the tablet and blank on the other side.

### 4 CONTRAINDICATIONS

Sotalol hydrochloride tablets (AF) are contraindicated in patients with:

- Sinus bradycardia, sick sinus syndrome, second and third degree AV block, unless a functioning pacemaker is present
- Congenital or acquired long QT syndromes
- Cardiogenic shock or decompensated heart failure
- Serum potassium < 4 mEq/L
- Bronchial asthma or related bronchospastic conditions
- Hypersensitivity to sotalol

For the treatment of AFIB/AFL, sotalol hydrochloride tablets (AF) are also contraindicated in patients with:

- Baseline QT interval > 450 ms
- Creatinine clearance < 40 mL/min

### 5 WARNINGS AND PRECAUTIONS

#### 5.1 QT Prolongation and Proarrhythmia

Sotalol hydrochloride can cause serious and potentially fatal ventricular arrhythmias such as sustained VT/VF, primarily Torsade de Pointes (TdP) type ventricular tachycardia, a polymorphic ventricular tachycardia associated with QT interval prolongation. Factors such as reduced creatinine clearance, female sex, higher doses, reduced heart rate and history of sustained VT/VF or heart failure increase the risk of TdP. The risk of TdP can be reduced by adjustment of the sotalol dose according to creatinine clearance and by monitoring the ECG for excessive increases in the QT interval [see *Dosage and Administration* (2.1)].

Correct hypokalemia or hypomagnesemia prior to initiating sotalol hydrochloride, as these conditions can exaggerate the degree of QT prolongation, and increase the potential for Torsade de Pointes.

Special attention should be given to electrolyte and acid-base balance in patients experiencing severe or prolonged diarrhea or patients receiving concomitant diuretic drugs.

Proarrhythmic events must be anticipated not only on initiating therapy, but with every upward dose adjustment [*see Dosage and Administration (2.1)*].

In general, do not use sotalol with other drugs known to cause QT prolongation [*see Drug Interactions (7.1)*].

## **5.2 Bradycardia/Heart Block/Sick Sinus Syndrome**

Sinus bradycardia (heart rate less than 50 bpm) occurred in 13% of patients receiving sotalol in clinical trials, and led to discontinuation in about 3% of patients. Bradycardia itself increases the risk of Torsade de Pointes. Sinus pause, sinus arrest and sinus node dysfunction occur in less than 1% of patients. The incidence of 2nd- or 3rd-degree AV block is approximately 1%.

Sotalol hydrochloride is contraindicated in patients with sick sinus syndrome because it may cause sinus bradycardia, sinus pauses or sinus arrest.

## **5.3 Hypotension**

Sotalol produces significant reductions in both systolic and diastolic blood pressures and may result in hypotension. Monitor hemodynamics in patients with marginal cardiac compensation.

## **5.4 Heart Failure**

New onset or worsening heart failure may occur during initiation or up-titration of sotalol because of its beta-blocking effects. Monitor for signs and symptoms of heart failure and discontinue treatment if symptoms occur.

## **5.5 Cardiac Ischemia after Abrupt Discontinuation**

Following abrupt cessation of therapy with beta adrenergic blockers, exacerbations of angina pectoris and myocardial infarction may occur. When discontinuing chronically administered sotalol hydrochloride, particularly in patients with ischemic heart disease, gradually reduce the dosage over a period of 1–2 weeks, if possible, and monitor the patient. If angina markedly worsens or acute coronary ischemia develops, treat appropriately (consider use of an alternative beta blocker). Warn patients not to interrupt therapy without their physician's advice. Because coronary artery disease may be common, but unrecognized, in patients treated with sotalol, abrupt discontinuation may unmask latent coronary insufficiency.

## **5.6 Bronchospasm**

Patients with bronchospastic diseases (for example chronic bronchitis and emphysema) should not receive beta-blockers. If sotalol hydrochloride is to be administered, use the smallest effective dose, to minimize inhibition of bronchodilation produced by endogenous or exogenous catecholamine stimulation of beta 2 receptors.

## **5.7 Masked Signs of Hypoglycemia in Diabetics**

Beta blockers may mask tachycardia occurring with hypoglycemia, but other manifestations such as dizziness and sweating may not be significantly affected. Elevated blood glucose levels and increased insulin requirements can occur in diabetic patients.

## **5.8 Thyroid Abnormalities**

Avoid abrupt withdrawal of beta-blockade in patients with thyroid disease because it may lead to an exacerbation of symptoms of hyperthyroidism, including thyroid storm. Beta-blockade may mask certain clinical signs (for example, tachycardia) of hyperthyroidism.



## 5.9 Anaphylaxis

While taking beta-blockers, patients with a history of anaphylactic reaction to a variety of allergens may have a more severe reaction on repeated challenge, either accidental, diagnostic or therapeutic. Such patients may be unresponsive to the usual doses of epinephrine used to treat the allergic reaction.

## 5.10 Major Surgery

Chronically administered beta-blocking therapy should not be routinely withdrawn prior to major surgery; however, the impaired ability of the heart to respond to reflex adrenergic stimuli may augment the risks of general anesthesia and surgical procedures.

## 6 ADVERSE REACTIONS

### 6.1 Clinical Trials Experience

Because clinical trials are conducted under widely varying conditions, adverse reaction rates observed in the clinical trials of a drug cannot be directly compared to rates in the clinical trials of another drug and may not reflect the rates observed in practice.

Adverse reactions that are clearly related to sotalol are those which are typical of its Class II (beta-blocking) and Class III (cardiac action potential duration prolongation) effects and are dose related.

#### *Ventricular Arrhythmias*

##### *Serious Adverse Reactions*

In patients with a history of sustained ventricular tachycardia, the incidence of Torsade de Pointes during oral sotalol treatment was 4% and worsened VT was about 1%; in patients with other less serious ventricular arrhythmias the incidence of Torsade de Pointes was 1% and new or worsened VT was about 0.7%. Incidence of Torsade de Pointes arrhythmias in patients with VT/VF are shown in Table 3 below.

**Table 3: Percent Incidence of Torsade de Pointes and Mean QT<sub>c</sub> Interval by Dose For Patients With Sustained VT/VF**

Daily Dose (mg)	Torsade de Pointes Incidence	Mean QT <sub>c</sub> * (msec)
80	0 (69)	463 (17)
160	0.5 (832)	467 (181)
320	1.6 (835)	473 (344)
480	4.4 (459)	483 (234)
640	3.7 (324)	490 (185)
> 640	5.8 (103)	512 (62)

( ) Number of patients assessed

\* highest on-therapy value

Table 4 below relates the incidence of Torsade de Pointes to on-therapy QT<sub>c</sub> and change in QT<sub>c</sub> from baseline in patients with ventricular arrhythmias. It should be noted, however, that the highest on-therapy QT<sub>c</sub> was in many cases the one obtained at the time of the Torsade de Pointes event, so that the table overstates the predictive value of a high QT<sub>c</sub>.

**Table 4: Relationship Between QT<sub>c</sub> Interval Prolongation and Torsade de Pointes**

On-Therapy QT <sub>c</sub> Interval	Incidence of Torsade de Pointes	Change from Baseline in QT <sub>c</sub>	Incidence of Torsade de Pointes
-------------------------------------	---------------------------------	---	---------------------------------

(msec)		(msec)	
< 500	1.3% (1787)	< 65	1.6% (1516)
500-525	3.4% (236)	65-80	3.2% (158)
525-550	5.6% (125)	80-100	4.1% (146)
> 550	10.8% (157)	100-130	5.2% (115)
		>130	7.1% (99)

( ) Number of patients assessed

Body System/ Adverse Reaction (Preferred Term)	Placebo	Sotalol Hydrochloride Tablets Total Daily Dose	
	N = 37 (%)	320 mg N = 38 (%)	640 mg N = 39 (%)
<b>CARDIOVASCULAR</b>			
Chest Pain	5.4	7.9	15.4
Dyspnea	2.7	18.4	20.5
Palpitation	2.7	7.9	5.1
Vasodilation	2.7	0.0	5.1
<b>NERVOUS SYSTEM</b>			
Asthenia	8.1	10.5	20.5
Dizziness	5.4	13.2	17.9
Fatigue	10.8	26.3	25.6
Headache	5.4	5.3	7.7
Lightheaded	8.1	15.8	5.1
Sleep Problem	2.7	2.6	7.7
<b>RESPIRATORY</b>			
Upper Respiratory Tract Problem	2.7	2.6	12.8
<b>SPECIAL SENSES</b>			
Visual Problem	2.7	5.3	0.0

The most common adverse reactions leading to discontinuation of sotalol hydrochloride tablets in trials of patients with ventricular arrhythmias are: fatigue 4%, bradycardia (less than 50 bpm) 3%, dyspnea 3%, proarrhythmia 3%, asthenia 2%, and dizziness 2%. Incidence of discontinuation for these adverse reactions was dose related.

One case of peripheral neuropathy that resolved on discontinuation of sotalol hydrochloride tablets and recurred when the patient was rechallenged with the drug was reported in an early dose tolerance study.

### ***Pediatric Patients***

In an unblinded multicenter trial of 25 pediatric patients with SVT and/or VT receiving daily doses of 30, 90 and 210 mg/m<sup>2</sup> with dosing every 8 hours for a total of 9 doses, no Torsade de Pointes or other serious new arrhythmias were observed. One (1) patient, receiving 30 mg/m<sup>2</sup> daily, was discontinued because of increased frequency of sinus pauses/bradycardia. Additional cardiovascular AEs were seen at the 90 and 210 mg/m<sup>2</sup> daily dose levels. They included QT prolongation (2 patients), sinus pauses/bradycardia (1 patient), increased severity of atrial flutter and reported chest pain (1 patient). Values for QT<sub>c</sub> ≥ 525 msec were seen in 2 patients at the 210 mg/m<sup>2</sup> daily dose level. Serious adverse events including death, Torsade de Pointes, other proarrhythmias, high-degree A-V blocks, and bradycardia have been reported in infants and/or children.

## Atrial Fibrillation/Atrial Flutter

### Placebo-Controlled Clinical Trials

In a pooled clinical trial population consisting of 4 placebo-controlled studies with 275 patients with atrial fibrillation (AFIB)/atrial flutter (AFL) treated with 160 to 320 mg doses of sotalol hydrochloride tablets (AF), the following adverse reactions presented in Table 6 occurred in at least 2% of placebo-treated patients and at a lesser rate than sotalol hydrochloride tablets-treated patients. The data are presented by incidence of reactions in the sotalol hydrochloride tablets (AF) and placebo groups by body system and daily dose.

**Table 6: Incidence (%) of Common Adverse Reactions ( $\geq 2\%$  in the Placebo group and less frequent than in the Sotalol Hydrochloride Tablets (AF) groups) in Four Placebo-controlled Studies of Patients with AFIB/AFL**

Body System/ Adverse Reaction (Preferred Term)	Placebo	Sotalol Hydrochloride Tablets (AF) Total Daily Dose	
	N = 282 (%)	160-240 mg N = 153 (%)	> 240-320 mg N = 122 (%)
<b>CARDIOVASCULAR</b>			
Bradycardia	2.5	13.1	12.3
<b>GASTROINTESTINAL</b>			
Diarrhea	2.1	5.2	5.7
Nausea/Vomiting	5.3	7.8	5.7
Pain abdomen	2.5	3.9	2.5
<b>GENERAL</b>			
Fatigue	8.5	19.6	18.9
Hyperhidrosis	3.2	5.2	4.9
Weakness	3.2	5.2	4.9
<b>MUSCULOSKELETAL/CONNECTIVE TISSUE</b>			
Pain musculoskeletal	2.8	2.6	4.1
<b>NERVOUS SYSTEM</b>			
Dizziness	12.4	16.3	13.1
Headache	5.3	3.3	11.5
<b>RESPIRATORY</b>			
Cough	2.5	3.3	2.5
Dyspnea	7.4	9.2	9.8

Overall, discontinuation because of unacceptable adverse events was necessary in 17% of the patients, and occurred in 10% of patients less than two weeks after starting treatment. The most common adverse reactions leading to discontinuation of sotalol hydrochloride tablets (AF) were: fatigue 4.6%, bradycardia 2.4%, proarrhythmia 2.2%, dyspnea 2%, and QT interval prolongation 1.4%.

### 6.2 Postmarketing Experience

The following adverse drug reactions have been identified during post-approval use of sotalol. Because these reactions are reported voluntarily from a population of uncertain size, it is not always possible to reliably estimate their frequency or establish a causal relationship to drug exposure. Voluntary reports since introduction include reports (less than one report per 10,000 patients) of: emotional lability, slightly clouded sensorium, incoordination, vertigo, paralysis, thrombocytopenia, eosinophilia, leukopenia, photosensitivity reaction, fever, pulmonary edema, hyperlipidemia, myalgia,

pruritis, alopecia.

## **7 DRUG INTERACTIONS**

### **7.1 Antiarrhythmics and other QT Prolonging Drugs**

Sotalol has not been studied with other drugs that prolong the QT interval such as antiarrhythmics, some phenothiazines, tricyclic antidepressants, certain oral macrolides and certain quinolone antibiotics. Discontinue Class I or Class III antiarrhythmic agents for at least three half-lives prior to dosing with sotalol. Class Ia antiarrhythmic drugs, such as disopyramide, quinidine and procainamide and other Class III drugs (for example, amiodarone) are not recommended as concomitant therapy with sotalol hydrochloride, because of their potential to prolong refractoriness [*see Warnings and Precautions (5.2)*]. There is only limited experience with the concomitant use of Class Ib or Ic antiarrhythmics. Additive Class II effects would also be anticipated with the use of other beta-blocking agents concomitantly with sotalol hydrochloride.

### **7.2 Digoxin**

Proarrhythmic events were more common in sotalol treated patients also receiving digoxin; it is not clear whether this represents an interaction or is related to the presence of CHF, a known risk factor for proarrhythmia, in the patients receiving digoxin. Both digitalis glycosides and beta-blockers slow atrioventricular conduction and decrease heart rate. Concomitant use can increase the risk of bradycardia.

### **7.3 Calcium-Channel Blocking Drugs**

Sotalol and calcium-blocking drugs can be expected to have additive effects on atrioventricular conduction or ventricular function. Monitor such patients for evidence of bradycardia and hypotension.

### **7.4 Catecholamine-Depleting Agents**

Concomitant use of catecholamine-depleting drugs, such as reserpine and guanethidine, with a beta-blocker may produce an excessive reduction of resting sympathetic nervous tone. Monitor such patients for evidence of hypotension and/or marked bradycardia which may produce syncope.

### **7.5 Insulin and Oral Antidiabetics**

Hyperglycemia may occur, and the dosage of insulin or antidiabetic drugs may require adjustment [*see Warnings and Precautions (5.7)*].

### **7.6 Clonidine**

Concomitant use with sotalol increases the risk of bradycardia. Because beta-blockers may potentiate the rebound hypertension sometimes observed after clonidine discontinuation, withdraw sotalol several days before the gradual withdrawal of clonidine to reduce the risk of rebound hypertension.

### **7.7 Antacids**

Avoid administration of oral sotalol within 2 hours of antacids containing aluminum oxide and magnesium hydroxide.

## **8 USE IN SPECIFIC POPULATIONS**

### **8.1 Pregnancy**

#### ***Pregnancy Category B***

There are no adequate and well-controlled studies in pregnant women. Sotalol has been shown to cross

the placenta, and is found in amniotic fluid. In animal studies there was no increase in congenital anomalies, but an increase in early resorptions occurred at sotalol doses 18 times the maximum recommended human dose (MRHD, based on surface area). Animal reproductive studies are not always predictive of human response.

Reproduction studies in rats and rabbits during organogenesis at 9 and 7 times the MRHD (based on surface area), respectively, did not reveal any teratogenic potential associated with sotalol. In rabbits, a dose of sotalol 6 times the MRHD produced a slight increase in fetal death as well as maternal toxicity. This effect did not occur at sotalol dose 3 times the MRHD. In rats a sotalol dose 18 times the MRHD increased the number of early resorptions, while a dose 2.5 times the MRHD, produced no increase in early resorptions.

### **8.3 Nursing Mothers**

Sotalol is excreted in the milk of laboratory animals and has been reported to be present in human milk. Discontinue nursing on sotalol hydrochloride tablets (AF).

### **8.4 Pediatric Use**

The safety and effectiveness of sotalol in children have not been established. However, the Class III electrophysiologic and beta-blocking effects, the pharmacokinetics, and the relationship between the effects (QT<sub>c</sub> interval and resting heart rate) and drug concentrations have been evaluated in children aged between 3 days and 12 years old [see *Dosage and Administration (2.4)* and *Clinical Pharmacology (12.2)*].

### **8.6 Renal Impairment**

Sotalol is mainly eliminated via the kidneys. Dosing intervals should be adjusted based on creatinine clearance [see *Dosage and Administration (2.5)*].

## **10 OVERDOSAGE**

Intentional or accidental overdosage with sotalol has resulted in death.

***Symptoms and Treatment of Overdosage:*** The most common signs to be expected are bradycardia, congestive heart failure, hypotension, bronchospasm and hypoglycemia. In cases of massive intentional overdosage (2–16 grams) of sotalol the following clinical findings were seen: hypotension, bradycardia, cardiac asystole, prolongation of QT interval, Torsade de Pointes, ventricular tachycardia, and premature ventricular complexes. If overdosage occurs, therapy with sotalol should be discontinued and the patient observed closely. Because of the lack of protein binding, hemodialysis is useful for reducing sotalol plasma concentrations. Patients should be carefully observed until QT intervals are normalized and the heart rate returns to levels > 50 bpm.

The occurrence of hypotension following an overdose may be associated with an initial slow drug elimination phase (half-life of 30 hours) thought to be due to a temporary reduction of renal function caused by the hypotension. In addition, if required, the following therapeutic measures are suggested:

***Bradycardia or Cardiac Asystole:*** Atropine, another anticholinergic drug, a beta-adrenergic agonist or transvenous cardiac pacing.

***Heart Block:*** (second and third degree) transvenous cardiac pacemaker.

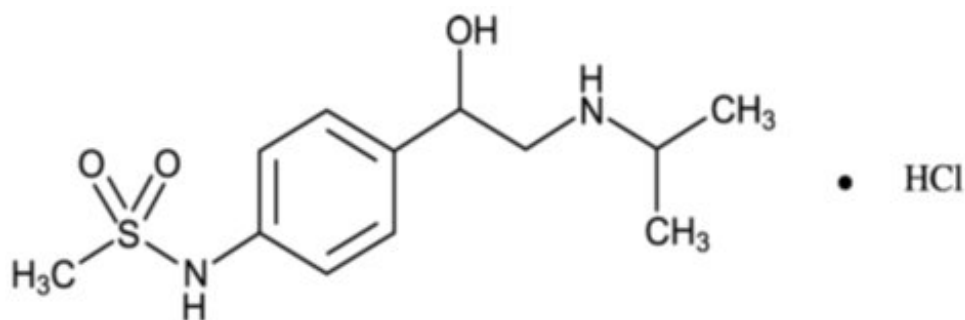
***Hypotension:*** (depending on associated factors) epinephrine rather than isoproterenol or norepinephrine may be useful.

***Bronchospasm:*** Aminophylline or aerosol beta-2-receptor stimulant. Higher than normal doses of beta-2 receptor stimulants may be required.

***Torsade de Pointes:*** DC cardioversion, transvenous cardiac pacing, epinephrine, magnesium sulfate.

## 11 DESCRIPTION

Sotalol hydrochloride tablets, USP (AF) contain sotalol hydrochloride, an antiarrhythmic drug with Class II (beta-adrenoreceptor blocking) and Class III (cardiac action potential duration prolongation) properties. Sotalol hydrochloride tablets (AF) are supplied as a light orange, round tablets for oral administration. Sotalol hydrochloride, USP is a white to almost white, crystalline powder with a molecular weight of 308.8. It is hydrophilic, soluble in water, propylene glycol and ethanol, but is only slightly soluble in chloroform. Chemically, sotalol hydrochloride is 4'-[1-Hydroxy-2-(isopropylamino)ethyl]methanesulfonanilide monohydrochloride. The molecular formula is  $C_{12}H_{20}N_2O_3S \cdot HCl$  and is represented by the following structural formula:



Sotalol hydrochloride tablets (AF) contain the following inactive ingredients: anhydrous lactose, colloidal silicon dioxide, FD&C Yellow No. 6 Aluminum Lake, magnesium stearate, microcrystalline cellulose, pregelatinized starch (corn) and sodium lauryl sulfate.

## 12 CLINICAL PHARMACOLOGY

### 12.1 Mechanism of Action

Sotalol has both beta-adrenoreceptor blocking (Vaughan Williams Class II) and cardiac action potential duration prolongation (Vaughan Williams Class III) antiarrhythmic properties. The two isomers of sotalol have similar Class III antiarrhythmic effects, while the l-isomer is responsible for virtually all of the beta-blocking activity. The beta-blocking effect of sotalol is non-cardioselective, half maximal at about 80 mg/day and maximal at doses between 320 and 640 mg/day. Sotalol does not have partial agonist or membrane stabilizing activity. Although significant beta-blockade occurs at oral doses as low as 25 mg, significant Class III effects are seen only at daily doses of 160 mg and above.

In children, a Class III electrophysiologic effect can be seen at daily doses of 210 mg/m<sup>2</sup> body surface area (BSA). A reduction of the resting heart rate due to the beta-blocking effect of sotalol is observed at daily doses  $\geq 90$  mg/m<sup>2</sup> in children.

### 12.2 Pharmacodynamics

#### *Cardiac Electrophysiological Effects*

Sotalol hydrochloride prolongs the plateau phase of the cardiac action potential in the isolated myocyte, as well as in isolated tissue preparations of ventricular or atrial muscle (Class III activity). In intact animals it slows heart rate, decreases AV nodal conduction and increases the refractory periods of atrial and ventricular muscle and conduction tissue.

In man, the Class II (beta-blockade) electrophysiological effects of sotalol are manifested by increased sinus cycle length (slowed heart rate), decreased AV nodal conduction and increased AV nodal refractoriness. The Class III electrophysiological effects in man include prolongation of the atrial and ventricular monophasic action potentials, and effective refractory period prolongation of atrial muscle,

ventricular muscle, and atrio-ventricular accessory pathways (where present) in both the anterograde and retrograde directions. With oral doses of 160 to 640 mg/day, the surface ECG shows dose-related mean increases of 40–100 msec in QT and 10–40 msec in QTc [see *Warnings and Precautions (5.1)*]. No significant alteration in QRS interval is observed.

In a small study (n = 25) of patients with implanted defibrillators treated concurrently with sotalol hydrochloride tablets, the average defibrillatory threshold was 6 joules (range 2–15 joules) compared to a mean of 16 joules for a nonrandomized comparative group primarily receiving amiodarone.

Twenty-five children in an unblinded, multicenter trial with SVT and/or ventricular tachyarrhythmias, aged between 3 days and 12 years (mostly neonates and infants), received an ascending titration regimen with daily doses of 30, 90 and 210 mg/m<sup>2</sup> with dosing every 8 hours for a total 9 doses. During steady-state, the respective average increases above baseline of the QTc interval were 2, 14, and 29 msec at the 3 dose levels. The respective mean maximum increases above baseline of the QTc interval were 23, 36, and 55 msec at the 3 dose levels. The steady-state percent increases in the RR interval were 3, 9 and 12%. The smallest children (BSA < 0.33 m<sup>2</sup>) showed a tendency for larger Class III effects ( $\Delta$ QTc) and an increased frequency of prolongations of the QTc interval as compared with larger children (BSA  $\geq$  0.33 m<sup>2</sup>). The beta-blocking effects also tended to be greater in the smaller children (BSA < 0.33 m<sup>2</sup>). Both the Class III and beta-blocking effects of sotalol were linearly related to the plasma concentrations.

### ***Hemodynamics***

In a study of systemic hemodynamic function measured invasively in 12 patients with a mean LV ejection fraction of 37% and ventricular tachycardia (9 sustained and 3 non-sustained), a median dose of 160 mg twice daily of sotalol hydrochloride tablets produced a 28% reduction in heart rate and a 24% decrease in cardiac index at 2 hours post-dosing at steady-state. Concurrently, systemic vascular resistance and stroke volume showed nonsignificant increases of 25% and 8%, respectively. One patient was discontinued because of worsening congestive heart failure. Pulmonary capillary wedge pressure increased significantly from 6.4 mmHg to 11.8 mmHg in the 11 patients who completed the study. Mean arterial pressure, mean pulmonary artery pressure and stroke work index did not significantly change. Exercise and isoproterenol induced tachycardia are antagonized by sotalol hydrochloride tablets, and total peripheral resistance increases by a small amount.

In hypertensive patients, sotalol produces significant reductions in both systolic and diastolic blood pressures. Although sotalol is usually well-tolerated hemodynamically, deterioration in cardiac performance may occur in patients with marginal cardiac compensation [see *Warnings and Precautions (5.3)*].

## **12.3 Pharmacokinetics**

The pharmacokinetics of the d and l enantiomers of sotalol are essentially identical.

### ***Absorption***

In healthy subjects, the oral bioavailability of sotalol is 90–100%. After oral administration, peak plasma concentrations are reached in 2.5 to 4 hours, and steady-state plasma concentrations are attained within 2–3 days (that is, after 5–6 doses when administered twice daily). Over the dosage range 160–640 mg/day sotalol displays dose proportionality with respect to plasma concentrations. When administered with a standard meal, the absorption of sotalol was reduced by approximately 20% compared to administration in fasting state.

### ***Distribution***

Sotalol does not bind to plasma proteins. Distribution occurs to a central (plasma) and to a peripheral compartment. Sotalol crosses the blood brain barrier poorly.

### ***Metabolism***

Sotalol is not metabolized and is not expected to inhibit or induce any CYP450 enzymes.

### ***Excretion***

Excretion of sotalol is predominantly via the kidney in the unchanged form, and therefore lower doses are necessary in conditions of renal impairment [see *Dosage and Administration (2.5)*]. The mean elimination half-life of sotalol is 12 hours. Dosing every 12 hours results in trough plasma concentrations which are approximately one-half of those at peak.

### ***Specific Populations***

#### ***Pediatric***

The combined analysis of a single-dose study and a multiple-dose study with 59 children, aged between 3 days and 12 years, showed the pharmacokinetics of sotalol to be first order. A daily dose of 30 mg/m<sup>2</sup> of sotalol was administered in the single dose study and daily doses of 30, 90 and 210 mg/m<sup>2</sup> were administered every 8 hours in the multi-dose study. After rapid absorption with peak levels occurring on average between 2–3 hours following administration, sotalol was eliminated with a mean half-life of 9.5 hours. Steady-state was reached after 1–2 days. The average peak to trough concentration ratio was 2. BSA was the most important covariate and more relevant than age for the pharmacokinetics of sotalol. The smallest children (BSA < 0.33m<sup>2</sup>) exhibited a greater drug exposure (+59%) than the larger children who showed a uniform drug concentration profile. The intersubject variation for oral clearance was 22%.

#### ***Geriatric***

Age does not significantly alter the pharmacokinetics of sotalol hydrochloride, but impaired renal function in geriatric patients can increase the terminal elimination half-life, resulting in increased drug accumulation.

#### ***Renal Impairment***

Sotalol is mainly eliminated via the kidneys through glomerular filtration and to a small degree by tubular secretion. There is a direct relationship between renal function, as measured by serum creatinine or creatinine clearance, and the elimination rate of sotalol. The half-life of sotalol is prolonged (up to 69 hours) in anuric patients. Doses or dosing intervals should be adjusted based on creatinine clearance [see *Dosage and Administration (2.5)*].

#### ***Hepatic Impairment***

Patients with hepatic impairment show no alteration in clearance of sotalol.

#### ***Drug-Drug Interactions***

##### ***Antacids***

Administration of oral sotalol within 2 hours of antacids may result in a reduction in C<sub>max</sub> and AUC of 26% and 20%, respectively, and consequently in a 25% reduction in the bradycardic effect at rest. Administration of the antacid two hours after oral sotalol has no effect on the pharmacokinetics or pharmacodynamics of sotalol.

No pharmacokinetic interactions were observed with hydrochlorothiazide or warfarin.

## **13 NONCLINICAL TOXICOLOGY**

### **13.1 Carcinogenesis, Mutagenesis, Impairment of Fertility**

No evidence of carcinogenic potential was observed in rats during a 24-month study at 137–275



mg/kg/day (approximately 30 times the maximum recommended human oral dose (MRHD) as mg/kg or 5 times the MRHD as mg/m<sup>2</sup>) or in mice, during a 24-month study at 4141–7122 mg/kg/day (approximately 450–750 times the MRHD as mg/kg or 36–63 times the MRHD as mg/m<sup>2</sup>).

Sotalol has not been evaluated in any specific assay of mutagenicity or clastogenicity.

No significant reduction in fertility occurred in rats at oral doses of 1000 mg/kg/day (approximately 100 times the MRHD as mg/kg or 18 times the MRHD as mg/m<sup>2</sup>) prior to mating, except for a small reduction in the number of offspring per litter.

Reproduction studies in rats and rabbits during organogenesis at 100 and 22 times the MRHD as mg/kg (9 and 7 times the MRHD as mg/m<sup>2</sup>), respectively, did not reveal any teratogenic potential associated with sotalol HCl. In rabbits, a high dose of sotalol HCl (160 mg/kg/day) at 16 times the MRHD as mg/kg (6 times the MRHD as mg/m<sup>2</sup>) produced a slight increase in fetal death, and maternal toxicity. Eight times the maximum dose (80 mg/kg/day or 3 times the MRHD as mg/m<sup>2</sup>) did not result in an increased incidence of fetal deaths. In rats, 1000 mg/kg/day sotalol HCl, 100 times the MRHD (18 times the MRHD as mg/m<sup>2</sup>), increased the number of early resorptions, while at 14 times the maximum dose (2.5 times the MRHD as mg/m<sup>2</sup>), no increase in early resorptions was noted. However, animal reproduction studies are not always predictive of human response.

## 14 CLINICAL STUDIES

### 14.1 Ventricular Arrhythmias

Sotalol hydrochloride tablets have been studied in life-threatening and less severe arrhythmias. In patients with frequent premature ventricular complexes (VPC), sotalol hydrochloride tablets were significantly superior to placebo in reducing VPCs, paired VPCs and non-sustained ventricular tachycardia (NSVT); the response was dose-related through 640 mg/day with 80–85% of patients having at least a 75% reduction of VPCs. Sotalol hydrochloride tablets were also superior, at the doses evaluated, to propranolol (40–80 mg TID) and similar to quinidine (200–400 mg QID) in reducing VPCs. In patients with life-threatening arrhythmias [sustained ventricular tachycardia/fibrillation (VT/VF)], sotalol hydrochloride tablets were studied acutely [by suppression of programmed electrical stimulation (PES) induced VT and by suppression of Holter monitor evidence of sustained VT] and, in acute responders, chronically.

In a double-blind, randomized comparison of sotalol hydrochloride tablets and procainamide given intravenously (total of 2 mg/kg sotalol hydrochloride tablets vs. 19 mg/kg of procainamide over 90 minutes), sotalol hydrochloride tablets suppressed PES induction in 30% of patients vs. 20% for procainamide ( $p = 0.2$ ).

In a randomized clinical trial [Electrophysiologic Study Versus Electrocardiographic Monitoring (ESVEM) Trial] comparing choice of antiarrhythmic therapy by PES suppression vs. Holter monitor selection (in each case followed by treadmill exercise testing) in patients with a history of sustained VT/VF who were also inducible by PES, the effectiveness acutely and chronically of sotalol hydrochloride tablets was compared with that of 6 other drugs (procainamide, quinidine, mexiletine, propafenone, imipramine and pirmenol). Overall response, limited to first randomized drug, was 39% for sotalol hydrochloride tablets and 30% for the pooled other drugs. Acute response rate for first drug randomized using suppression of PES induction was 36% for sotalol hydrochloride tablets vs. a mean of 13% for the other drugs. Using the Holter monitoring endpoint (complete suppression of sustained VT, 90% suppression of NSVT, 80% suppression of VPC pairs, and at least 70% suppression of VPCs), sotalol hydrochloride tablets yielded 41% response vs. 45% for the other drugs combined. Among responders placed on long-term therapy identified acutely as effective (by either PES or Holter), sotalol hydrochloride tablets, when compared to the pool of other drugs, had the lowest two-year mortality (13% vs. 22%), the lowest two-year VT recurrence rate (30% vs. 60%), and the lowest withdrawal rate (38% vs. about 75–80%). The most commonly used doses of sotalol hydrochloride tablets in this trial were 320–480 mg/day (66% of patients), with 16% receiving 240

mg/day or less and 18% receiving 640 mg or more.

It cannot be determined, however, in the absence of a controlled comparison of sotalol hydrochloride tablets vs. no pharmacologic treatment (for example, in patients with implanted defibrillators) whether sotalol hydrochloride tablets response causes improved survival or identifies a population with a good prognosis.

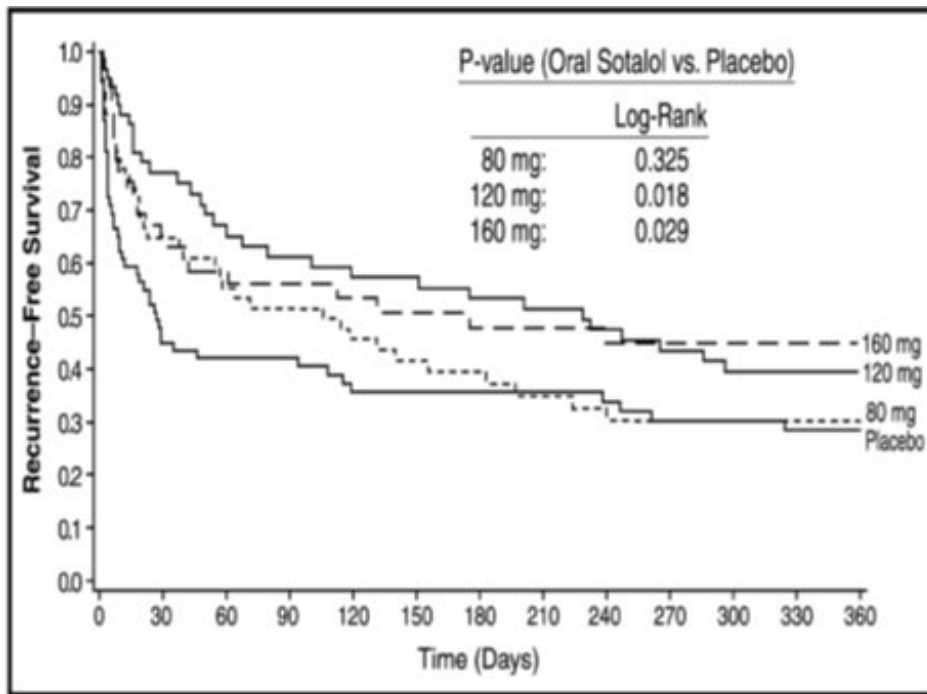
Sotalol hydrochloride tablets have not been shown to enhance survival in patients with ventricular arrhythmias.

#### **14.2 Clinical Studies in Supra-ventricular Arrhythmias**

Sotalol hydrochloride tablets (AF) have been studied in patients with symptomatic AFIB/AFL in two principal studies, one in patients with primarily paroxysmal AFIB/AFL, the other in patients with primarily chronic AFIB.

In one study, a U.S. multicenter, randomized, placebo-controlled, double-blind, dose-response trial of patients with symptomatic primarily paroxysmal AFIB/AFL, three fixed dose levels of sotalol hydrochloride tablets (AF) (80 mg, 120 mg and 160 mg) twice daily and placebo were compared in 253 patients. In patients with reduced creatinine clearance (40-60 mL/min) the same doses were given once daily. Patients were excluded for the following reasons: QT > 450 msec; creatinine clearance < 40 mL/min; intolerance to beta-blockers; bradycardia-tachycardia syndrome in the absence of an implanted pacemaker; AFIB/AFL was asymptomatic or was associated with syncope, embolic CVA or TIA; acute myocardial infarction within the previous 2 months; congestive heart failure; bronchial asthma or other contraindications to beta-blocker therapy; receiving potassium losing diuretics without potassium replacement or without concurrent use of ACE-inhibitors; uncorrected hypokalemia (serum potassium < 3.5 meq/L) or hypomagnesemia (serum magnesium < 1.5 meq/L); received chronic oral amiodarone therapy for > 1 month within previous 12 weeks; congenital or acquired long QT syndromes; history of Torsade de Pointes with other antiarrhythmic agents which increase the duration of ventricular repolarization; sinus rate < 50 bpm during waking hours; unstable angina pectoris; receiving treatment with other drugs that prolong the QT interval; and AFIB/AFL associated with the Wolff-Parkinson-White (WPW) syndrome. If the QT interval increased to  $\geq 520$  msec (or JT  $\geq 430$  msec if QRS > 100 msec) the drug was discontinued. The patient population in this trial was 64% male, and the mean age was 62 years. No structural heart disease was present in 43% of the patients. Doses were administered once daily in 20% of the patients because of reduced creatinine clearance.

Sotalol hydrochloride tablets (AF) were shown to prolong the time to the first symptomatic, ECG-documented recurrence of AFIB/AFL, as well as to reduce the risk of such recurrence at both 6 and 12 months. The 120 mg dose was more effective than 80 mg, but 160 mg did not appear to have an added benefit. Note that these doses were given twice or once daily, depending on renal function. The results are shown in Figure 2, Table 7 and Table 8.



**Figure 2: Study 1 – Time to First ECG-Documented Recurrence of Symptomatic AFIB/AFL Since Randomization**

**Table 7: Study 1 – Patient Status at 12 Months**

	Placebo	Sotalol Hydrochloride Tablets (AF) Dose		
		80 mg	120 mg	160 mg
Randomized	69	59	63	62
On treatment in NSR at 12 months without recurrence*	23%	22%	29%	23%
Recurrence*†	67%	58%	49%	42%
D/C for AEs	6%	12%	18%	29%

Note that columns do not add up to 100% due to discontinuations (D/C) for “other” reasons.

\* Symptomatic AFIB/AFL

† Efficacy endpoint of Study 1; study treatment stopped.

**Table 8: Study 1 – Median Time to Recurrence of Symptomatic AFIB/AFL and Relative Risk (vs. Placebo) at 12 Months**

	Placebo n = 69	Sotalol Hydrochloride Tablets (AF) Dose		
		80 mg n = 59	120 mg n = 63	160 mg n = 62
P-value vs. placebo		0.325	0.018	0.029
Relative Risk (RR) to placebo		0.81	0.59	0.59
Median time to recurrence (days)	27	106	229	175

Discontinuation because of adverse events was dose related.

In a second multicenter, randomized, placebo-controlled, double-blind study of 6 months duration in 232 patients with chronic AFIB, sotalol hydrochloride tablets (AF) were titrated over a dose range from 80 mg/day to 320 mg/day. The patient population of this trial was 70% male with a mean age of 65 years. Structural heart disease was present in 49% of the patients. All patients had chronic AFIB for > 2 weeks but < 1 year at entry with a mean duration of 4.1 months. Patients were excluded if they had significant electrolyte imbalance, QTc > 460 msec, QRS > 140 msec, any degree of AV block or functioning pacemaker, uncompensated cardiac failure, asthma, significant renal disease (estimated creatinine clearance < 50 mL/min), heart rate < 50 bpm, myocardial infarction or open heart surgery in past 2 months, unstable angina, infective endocarditis, active pericarditis or myocarditis, ≥ 3 DC cardioversions in the past, medications that prolonged QT interval, and previous amiodarone treatment. After successful cardioversion patients were randomized to receive placebo (n = 114) or sotalol hydrochloride tablets (AF) (n = 118), at a starting dose of 80 mg twice daily. If the initial dose was not tolerated it was decreased to 80 mg once daily, but if it was tolerated it was increased to 160 mg twice daily. During the maintenance period 67% of treated patients received a dose of 160 mg twice daily, and the remainder received doses of 80 mg once daily (17%) and 80 mg twice daily (16%).

Tables 9 and 10 show the results of the trial. There was a longer time to ECG-documented recurrence of AFIB and a reduced risk of recurrence at 6 months compared to placebo.

**Table 9: Study 2 – Patient Status at 6 Months**

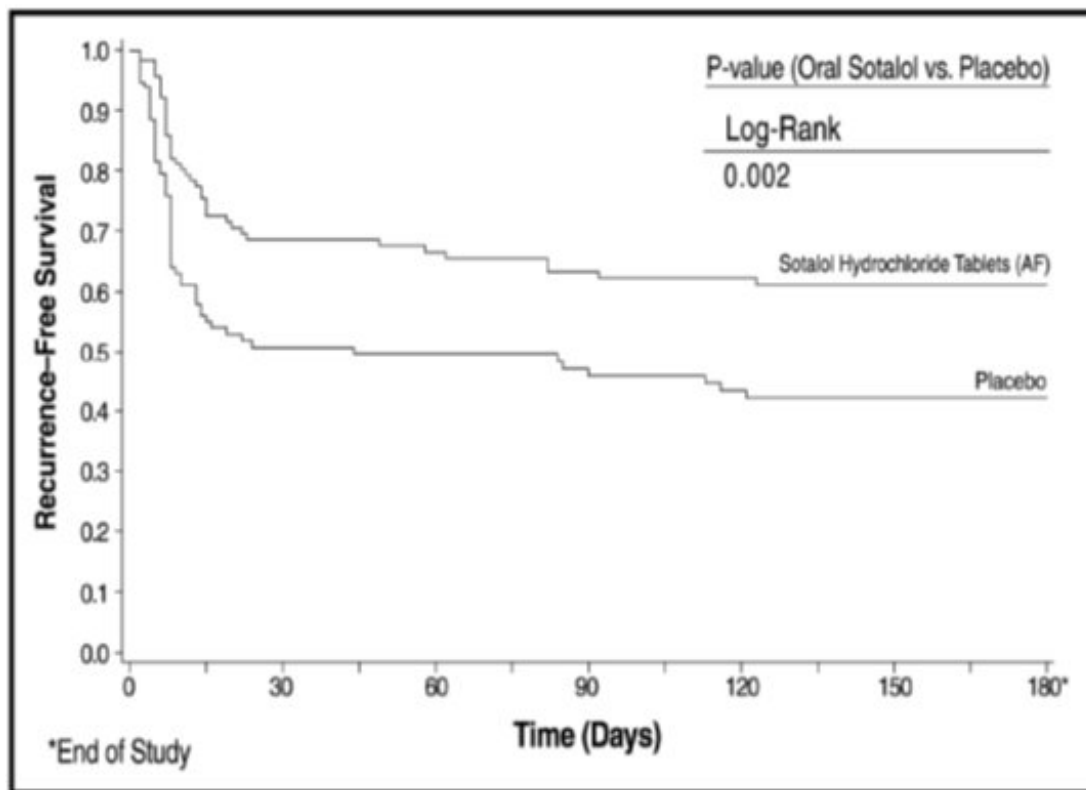
	Placebo n = 114	Sotalol Hydrochloride Tablets (AF) n = 118
On treatment in NSR at 6 months without recurrence*	29%	45%
Recurrence*†	67%	49%
D/C for AEs	3%	6%
Death	1%	

\* Symptomatic or asymptomatic AFIB/AFL

† Efficacy endpoint of Study 2; study treatment stopped.

**Table 10: Study 2 – Median Time to Recurrence of Symptomatic AFIB/AFL/Death and Relative Risk (vs. Placebo) at 6 Months**

	Placebo n = 114	Sotalol Hydrochloride Tablets (AF) n = 118
P-value vs. placebo		0.002
Relative Risk (RR) to placebo		0.55
Median time to recurrence (days)	44	> 180



**Figure 3: Study 2 – Time to First ECG-Documented Recurrence of Symptomatic AFIB/AFL/Death Since Randomization**

### 14.3 Clinical Studies in Patients with Myocardial Infarction

In a large double-blind, placebo controlled secondary prevention (postinfarction) trial (n = 1,456); sotalol hydrochloride tablets were given as a non-titrated initial dose of 320 mg once daily. Sotalol hydrochloride tablets did not produce a significant increase in survival (7.3% mortality on sotalol hydrochloride tablets vs. 8.9% on placebo, p = 0.3), but overall did not suggest an adverse effect on survival. There was, however, a suggestion of an early (i.e., first 10 days) excess mortality (3% on sotalol hydrochloride tablets vs. 2% on placebo).

In a second small trial (n = 17 randomized to sotalol hydrochloride tablets) where sotalol hydrochloride tablets were administered at high doses (for example, 320 mg twice daily) to high-risk post-infarction patients (ejection fraction < 40% and either > 10 VPC/hr or VT on Holter), there were 4 fatalities and 3 serious hemodynamic/electrical adverse events within two weeks of initiating sotalol hydrochloride tablets.

### 16 HOW SUPPLIED/STORAGE AND HANDLING

Sotalol Hydrochloride Tablets, USP (AF) are available containing 80 mg, 120 mg or 160 mg of sotalol hydrochloride, USP.

The 80 mg tablets are light orange, round, scored tablets debossed with **M** above the score and **S23** below the score on one side of the tablet and blank on the other side. They are available as follows:

NDC 0378-5123-01  
bottles of 100 tablets

The 120 mg tablets are light orange, round, scored tablets debossed with **M** above the score and **S24** below the score on one side of the tablet and blank on the other side. They are available as follows:

NDC 0378-5124-01  
bottles of 100 tablets

The 160 mg tablets are light orange, round, scored tablets debossed with **M** above the score and **S25** below the score on one side of the tablet and blank on the other side. They are available as follows:

NDC 0378-5125-01  
bottles of 100 tablets

**Store at 20° to 25°C (68° to 77°F). [See USP Controlled Room Temperature.]**

Dispense in a tight, light-resistant container as defined in the USP using a child-resistant closure.

## **17 PATIENT COUNSELING INFORMATION**

- Advise patients to contact their health care provider in the event of syncope, pre-syncope symptoms or cardiac palpitations.
- Advise patients that their electrolytes and ECG will be monitored during treatment [*see Warnings and Precautions (5.1)*].
- Advise patients to contact their healthcare provider in the event of conditions that could lead to electrolyte changes such as severe diarrhea, unusual sweating, vomiting, less appetite than normal or excessive thirst [*see Warnings and Precautions (5.1)*].
- Advise patients not to change the sotalol hydrochloride tablets (AF) dose prescribed by their healthcare provider.
- Advise patients that they should not miss a dose, but if they do miss a dose they should not double the next dose to compensate for the missed dose: they should take the next dose at the regularly scheduled time [*see Dosage and Administration (2)*].
- Advise patients to not interrupt or discontinue sotalol hydrochloride tablets (AF) without their physician's advice, that they should get their prescription for sotalol filled and refilled on time so they do not interrupt treatment [*see Dosage and Administration (2)*].
- Advise patients to not start taking other medications without first discussing new medications with their healthcare provider.
- Advise patients that they should avoid taking sotalol hydrochloride tablets (AF) within two hours of taking antacids that contain aluminum oxide or magnesium hydroxide [*see Drug Interactions (7.7)*].

**Mylan Pharmaceuticals Inc.**  
Morgantown, WV 26505 U.S.A.

Revised: 8/2018  
SOTLAF:R3

## **PRINCIPAL DISPLAY PANEL - 80 mg**

**NDC 0378-5123-01**

**Sotalol HCl**  
**Tablets, USP (AF)**  
**80 mg**

**Rx only 100 Tablets**

Each tablet contains:  
Sotalol hydrochloride, USP 80 mg

Dispense in a tight, light-resistant container as defined in the USP using a child-resistant closure.

Keep container tightly closed.

**Keep this and all medication out of the reach of children.**

**Store at 20° to 25°C (68° to 77°F).**  
**[See USP Controlled Room Temperature.]**

**Usual Dosage:** See accompanying prescribing information.

**Mylan Pharmaceuticals Inc.**  
Morgantown, WV 26505 U.S.A.

**Mylan.com**

**RM5123A4**

**PRINCIPAL DISPLAY PANEL - 120 mg**

**NDC 0378-5124-01**

**Sotalol HCl**  
**Tablets, USP (AF)**  
**120 mg**

**Rx only 100 Tablets**

Each tablet contains:  
Sotalol hydrochloride, USP 120 mg

Dispense in a tight, light-resistant container as defined in the USP using a child-resistant closure.

Keep container tightly closed.

**Keep this and all medication out of the reach of children.**

**Store at 20° to 25°C (68° to 77°F).**  
**[See USP Controlled Room**

**Temperature.]**

**Usual Dosage:** See accompanying prescribing information.

**Mylan Pharmaceuticals Inc.**  
Morgantown, WV 26505 U.S.A.

**Mylan.com**

**RM5124A4**

**PRINCIPAL DISPLAY PANEL - 160 mg**

**NDC 0378-5125-01**

**Sotalol HCl**  
**Tablets, USP (AF)**  
**160 mg**

**Rx only 100 Tablets**

Each tablet contains:  
Sotalol hydrochloride, USP 160 mg

Dispense in a tight, light-resistant container as defined in the USP using a child-resistant closure.

Keep container tightly closed.

**Keep this and all medication out of the reach of children.**

**Store at 20° to 25°C (68° to 77°F).**  
**[See USP Controlled Room Temperature.]**

**Usual Dosage:** See accompanying prescribing information.

**Mylan Pharmaceuticals Inc.**  
Morgantown, WV 26505 U.S.A.



Each tablet contains:  
Sotalol hydrochloride, USP 160 mg

NDC 0378-5125-01

**Sotalol HCl**  
Tablets, USP (AF)

**160 mg**

**Mylan®**

Rx only 100 Tablets

Dispense in a tight, light-resistant container as defined in the USP using a child-resistant closure. Keep container tightly closed. Keep this and all medication out of the reach of children. Store at 20° to 25°C (68° to 77°F). [See USP Controlled Room Temperature.] Usual Dosage: See accompanying prescribing information. Mylan Pharmaceuticals Inc. Morgantown, WV 26505 U.S.A.

RM5125A4

3 N  
0378-5125-01  
3

GTIN XXXXXXXXXXXXX  
S/N XXXXXXXXX  
EXP MM/YYYY  
LOT XXXXXX

**Mylan®**  
Mylan.com

## SOTALOL HYDROCHLORIDE

sotalol hydrochloride tablet

### Product Information

<b>Product Type</b>	HUMAN PRESCRIPTION DRUG	<b>Item Code (Source)</b>	NDC:0378-5123
<b>Route of Administration</b>	ORAL		

### Active Ingredient/Active Moiety

Ingredient Name	Basis of Strength	Strength
SOTALOL HYDROCHLORIDE (UNII: HEC37C70XX) (SOTALOL - UNII:A6D97U294I)	SOTALOL HYDROCHLORIDE	80 mg

### Inactive Ingredients

Ingredient Name	Strength
ANHYDROUS LACTOSE (UNII: 3SY5LH9PMK)	
SILICON DIOXIDE (UNII: ETJ7Z6XBU4)	
FD&C YELLOW NO. 6 (UNII: H77VEI93A8)	
MAGNESIUM STEARATE (UNII: 70097M6I30)	
MICROCRYSTALLINE CELLULOSE (UNII: OP1R32D61U)	
STARCH, CORN (UNII: O8232NY3SJ)	
SODIUM LAURYL SULFATE (UNII: 368GB5141J)	

### Product Characteristics

<b>Color</b>	ORANGE (light orange)	<b>Score</b>	2 pieces
<b>Shape</b>	ROUND	<b>Size</b>	8 mm
<b>Flavor</b>		<b>Imprint Code</b>	M;S23

**Contains****Packaging**

#	Item Code	Package Description	Marketing Start Date	Marketing End Date
1	NDC:0378-5123-01	100 in 1 BOTTLE, PLASTIC; Type 0: Not a Combination Product	02/20/2007	

**Marketing Information**

Marketing Category	Application Number or Monograph Citation	Marketing Start Date	Marketing End Date
ANDA	ANDA077616	02/20/2007	

**SOTALOL HYDROCHLORIDE**

sotalol hydrochloride tablet

**Product Information**

Product Type	HUMAN PRESCRIPTION DRUG	Item Code (Source)	NDC:0378-5124
Route of Administration	ORAL		

**Active Ingredient/Active Moiety**

Ingredient Name	Basis of Strength	Strength
SOTALOL HYDROCHLORIDE (UNII: HEC37C70XX) (SOTALOL - UNII:A6D97U294I)	SOTALOL HYDROCHLORIDE	120 mg

**Inactive Ingredients**

Ingredient Name	Strength
ANHYDROUS LACTOSE (UNII: 3SY5LH9PMK)	
SILICON DIOXIDE (UNII: ETJ7Z6XBU4)	
FD&C YELLOW NO. 6 (UNII: H77VEI93A8)	
MAGNESIUM STEARATE (UNII: 70097M6I30)	
MICROCRYSTALLINE CELLULOSE (UNII: OP1R32D61U)	
STARCH, CORN (UNII: O8232NY3SJ)	
SODIUM LAURYL SULFATE (UNII: 368GB5141J)	

**Product Characteristics**

Color	ORANGE (light orange)	Score	2 pieces
Shape	ROUND	Size	9mm
Flavor		Imprint Code	M;S24
Contains			

**Packaging**

#	Item Code	Package Description	Marketing Start Date	Marketing End Date
1	NDC:0378-5124-01	100 in 1 BOTTLE, PLASTIC; Type 0: Not a Combination Product	02/20/2007	

Marketing Information			
Marketing Category	Application Number or Monograph Citation	Marketing Start Date	Marketing End Date
ANDA	ANDA077616	02/20/2007	

## SOTALOL HYDROCHLORIDE

sotalol hydrochloride tablet

Product Information			
Product Type	HUMAN PRESCRIPTION DRUG	Item Code (Source)	NDC:0378-5125
Route of Administration	ORAL		

Active Ingredient/Active Moiety			
Ingredient Name	Basis of Strength	Strength	
SOTALOL HYDROCHLORIDE (UNII: HEC37C70XX) (SOTALOL - UNII:A6D97U294I)	SOTALOL HYDROCHLORIDE	160 mg	

Inactive Ingredients	
Ingredient Name	Strength
ANHYDROUS LACTOSE (UNII: 3SY5LH9PMK)	
SILICON DIOXIDE (UNII: ETJ7Z6XBU4)	
FD&C YELLOW NO. 6 (UNII: H77VEI93A8)	
MAGNESIUM STEARATE (UNII: 70097M6I30)	
MICROCRYSTALLINE CELLULOSE (UNII: OP1R32D61U)	
STARCH, CORN (UNII: O8232NY3SJ)	
SODIUM LAURYL SULFATE (UNII: 368GB5141J)	

Product Characteristics			
Color	ORANGE (light orange)	Score	2 pieces
Shape	ROUND	Size	10mm
Flavor		Imprint Code	M;S25
Contains			

Packaging				
#	Item Code	Package Description	Marketing Start Date	Marketing End Date
1	NDC:0378-5125-01	100 in 1 BOTTLE, PLASTIC; Type 0: Not a Combination Product	02/20/2007	

## Marketing Information

Marketing Category	Application Number or Monograph Citation	Marketing Start Date	Marketing End Date
ANDA	ANDA077616	02/20/2007	

**Labeler** - Mylan Pharmaceuticals Inc. (059295980)

Revised: 8/2018

Mylan Pharmaceuticals Inc.