

TROSPIUM CHLORIDE- trospium chloride capsule, extended release

Proficient Rx LP

HIGHLIGHTS OF PRESCRIBING INFORMATION

TROSPIUM CHLORIDE EXTENDED-RELEASE CAPSULES

These highlights do not include all the information needed to use TROSPIUM CHLORIDE EXTENDED-RELEASE CAPSULES safely and effectively. See full prescribing information for TROSPIUM CHLORIDE EXTENDED-RELEASE CAPSULES.

TROSPIUM CHLORIDE extended-release capsules, for oral use

Initial U.S. Approval: 2004

INDICATIONS AND USAGE

Trospium Chloride Extended-Release Capsules are a muscarinic antagonist indicated for the treatment of overactive bladder (OAB) with symptoms of urge urinary incontinence, urgency, and urinary frequency.(1)

DOSAGE AND ADMINISTRATION

• The recommended dosage of Trospium Chloride Extended-Release Capsules is one 60 mg capsule daily in the morning. Trospium Chloride Extended-Release Capsules should be dosed with water on an empty stomach, at least one hour before a meal. (2)

• Trospium Chloride Extended-Release Capsules are not recommended for use in patients with severe renal impairment (creatinine clearance less than 30 mL/minute). (2)

DOSAGE FORMS AND STRENGTHS

• 60 mg capsules(3)

CONTRAINDICATIONS

Trospium Chloride Extended-Release Capsules are contraindicated in

• Patients with urinary retention, gastric retention, or uncontrolled narrow- angle glaucoma, and in patients who are at risk for these conditions (4)

• Patients with known hypersensitivity (4)

WARNINGS AND PRECAUTIONS

• Trospium Chloride Extended-Release Capsules should be administered with caution to patients with clinically significant bladder outflow obstruction or gastrointestinal obstructive disorders due to risk of urinary or gastric retention. (5.1, 5.3)

• Angioedema of the face, lips, tongue and/or larynx has been reported with trospium chloride.(5.2)

• In patients with narrow angle glaucoma, Trospium Chloride Extended-Release Capsules should be used only with careful monitoring. (5.4)

• Central Nervous System Effects: Somnolence has been reported with Trospium Chloride Extended-Release Capsules. Advise patients not to drive or operate heavy machinery until they know how Trospium Chloride Extended-Release Capsules affects them. (5.5)

• Trospium Chloride Extended-Release Capsules are not recommended for use in patients with severe renal impairment (creatinine clearance less than 30 mL/minute).(5.6)

• Alcohol should not be consumed within 2 hours of Trospium Chloride Extended-Release Capsules administration. (5.7)

ADVERSE REACTIONS

The most common adverse reactions (greater than or equal to 1%) with Trospium Chloride Extended-Release Capsules are dry mouth (10.7%) and constipation (8.5%). (6.1) To report SUSPECTED ADVERSE REACTIONS, contact Granules Pharmaceuticals Inc., at 1-877-770-3183 or FDA at 1-800-FDA-1088 or www.fda.gov/medwatch

DRUG INTERACTIONS

- Some drugs which are actively secreted by the kidney may interact with Trosium Chloride Extended-Release Capsules by competing for renal tubular secretion. (7)
- Concomitant use with digoxin did not affect the pharmacokinetics of either drug. (7.1)
- Exposure to trosium on average was comparable in the presence of and without antacid, however, some individuals demonstrated increases or decreases in trosium exposure in the presence of antacid. The clinical relevance of these findings is not known. (7.2)
- Concomitant use with metformin immediate release tablets reduced exposure and peak concentration of trosium. (7.3)

USE IN SPECIFIC POPULATIONS

- The safety and effectiveness of Trosium Chloride Extended-Release Capsules in pediatric patients have not been established. (8.4)

See 17 for PATIENT COUNSELING INFORMATION.

Revised: 4/2022

FULL PRESCRIBING INFORMATION: CONTENTS*

1 INDICATIONS AND USAGE

2 DOSAGE AND ADMINISTRATION

3 DOSAGE FORMS AND STRENGTHS

4 CONTRAINDICATIONS

5 WARNINGS AND PRECAUTIONS

- 5.1 Risk of Urinary Retention
- 5.2 Angioedema
- 5.3 Decreased Gastrointestinal Motility
- 5.4 Controlled Narrow-angle Glaucoma
- 5.5 Central Nervous System Effects
- 5.6 Patients with Severe Renal Impairment
- 5.7 Alcohol Interaction

6 ADVERSE REACTIONS

- 6.1 Clinical Trials Experience
- 6.2 Post-marketing Experience

7 DRUG INTERACTIONS

- 7.1 Digoxin
- 7.2 Antacid
- 7.3 Metformin

8 USE IN SPECIFIC POPULATIONS

- 8.1 Pregnancy
- 8.2 Labor and Delivery
- 8.3 Nursing Mothers
- 8.4 Pediatric Use
- 8.5 Geriatric Use
- 8.6 Renal Impairment
- 8.7 Hepatic Impairment

10 OVERDOSAGE

11 DESCRIPTION

12 CLINICAL PHARMACOLOGY

- 12.1 Mechanism of Action
- 12.2 Pharmacodynamics

12.3 Pharmacokinetics

13 NONCLINICAL TOXICOLOGY

13.1 Carcinogenesis, Mutagenesis, Impairment of Fertility

14 CLINICAL STUDIES

16 HOW SUPPLIED/STORAGE AND HANDLING

17 PATIENT COUNSELING INFORMATION

17.1 Angioedema

17.2 When Not to Use

17.3 Administration

17.4 Adverse Reactions

* Sections or subsections omitted from the full prescribing information are not listed.

FULL PRESCRIBING INFORMATION

1 INDICATIONS AND USAGE

Trospium Chloride Extended-Release Capsules are a muscarinic antagonist indicated for the treatment of overactive bladder (OAB) with symptoms of urge urinary incontinence, urgency, and urinary frequency.

2 DOSAGE AND ADMINISTRATION

The recommended dosage of Trospium Chloride Extended-Release Capsules is one 60 mg capsule daily in the morning. Trospium Chloride Extended-Release Capsules should be dosed with water on an empty stomach, at least one hour before a meal.

Trospium Chloride Extended-Release Capsules are not recommended for use in patients with severe renal impairment (creatinine clearance less than 30 mL/minute) [see *Warnings and Precautions* (5.6), *Use in Specific Populations* (8.6), and *Clinical Pharmacology* (12.3)].

3 DOSAGE FORMS AND STRENGTHS

Trospium Chloride Extended-Release Capsules are supplied as 60 mg capsules (white opaque body and orange opaque cap, printed with "027" and "G60").

4 CONTRAINDICATIONS

Trospium Chloride Extended-Release Capsules are contraindicated in patients with:

- urinary retention
- gastric retention

- uncontrolled narrow-angle glaucoma
- known hypersensitivity to the drug or its ingredients. Angioedema, rash and anaphylactic reaction have been reported.

5 WARNINGS AND PRECAUTIONS

5.1 Risk of Urinary Retention

Trospium Chloride Extended-Release Capsules should be administered with caution to patients with clinically significant bladder outflow obstruction because of the risk of urinary retention [see *Contraindications* (4)].

5.2 Angioedema

Angioedema of the face, lips, tongue and/or larynx has been reported with trospium chloride. In one case, angioedema occurred after the first dose of trospium chloride. Angioedema associated with upper airway swelling may be life threatening. If involvement of the tongue, hypopharynx, or larynx occurs, trospium chloride should be promptly discontinued and appropriate therapy and/or measures necessary to ensure a patent airway should be promptly provided.

5.3 Decreased Gastrointestinal Motility

Trospium Chloride Extended-Release Capsules should be administered with caution to patients with gastrointestinal obstructive disorders because of the risk of gastric retention [see *Contraindications* (4)]. Trospium Chloride Extended-Release Capsules, like other antimuscarinic agents, may decrease gastrointestinal motility and should be used with caution in patients with conditions such as ulcerative colitis, intestinal atony and myasthenia gravis.

5.4 Controlled Narrow-angle Glaucoma

In patients being treated for narrow-angle glaucoma, Trospium Chloride Extended-Release Capsules should only be used if the potential benefits outweigh the risks, and in that circumstance only with careful monitoring [see *Contraindications* (4)].

5.5 Central Nervous System Effects

Trospium Chloride Extended-Release Capsules and Trospium Chloride Immediate Release Capsules are associated with anticholinergic central nervous system (CNS) effects [see *Adverse Reactions* (6.2)]. A variety of CNS anticholinergic effects have been reported, including dizziness, confusion, hallucinations and somnolence. Patients should be monitored for signs of anticholinergic CNS effects, particularly after beginning treatment or increasing the dose. Advise patients not to drive or operate heavy machinery until they know how Trospium Chloride Extended-Release Capsules affects them. If a patient experiences anticholinergic CNS effects, dose reduction or drug discontinuation should be considered.

5.6 Patients with Severe Renal Impairment

Trospium Chloride Extended-Release Capsules are not recommended for use in patients

with severe renal impairment (creatinine clearance less than 30 mL/minute) [see *Dosage and Administration* (2), *Use in Specific Populations* (8.6), and *Clinical Pharmacology* (12.3)].

5.7 Alcohol Interaction

Alcohol should not be consumed within 2 hours of Trospium Chloride Extended-Release Capsules administration. In addition, patients should be informed that alcohol may enhance the drowsiness caused by anticholinergic agents.

6 ADVERSE REACTIONS

6.1 Clinical Trials Experience

Because clinical trials are conducted under widely varying conditions, the adverse reaction rates observed in the clinical trials of a drug cannot be directly compared to rates in the clinical trials of another drug and may not reflect the rates observed in clinical practice.

The data described below reflect exposure to Trospium Chloride Extended-Release Capsules in 578 patients for 12 weeks in two Phase 3 double-blind, placebo controlled trials (n=1,165). These studies included overactive bladder patients of ages 21 to 90 years, of which 86% were female and 85% were Caucasian. Patients received 60 mg daily doses of Trospium Chloride Extended-Release Capsules. Patients in these studies were eligible to continue treatment with Trospium Chloride Extended-Release Capsules 60 mg for up to one year. From both these controlled trials combined, 769 and 238 patients received treatment with Trospium Chloride Extended-Release Capsules for at least 24 and 52 weeks, respectively.

There were 157 (27.2%) Trospium Chloride Extended-Release Capsules patients and 98 (16.7%) placebo patients who experienced one or more double-blind treatment-emergent adverse events (TEAEs) that were assessed by the investigator as at least possibly related to study medication. The most common TEAEs were dry mouth and constipation which, when reported, commonly occurred early in treatment (often within the first week). In the two Phase 3 studies, constipation, dry mouth, and urinary retention led to discontinuation in 1%, 0.7%, and 0.5% of patients treated with Trospium Chloride Extended-Release Capsules 60 mg daily, respectively. In the placebo group, there were no discontinuations due to dry mouth or urinary retention and one due to constipation.

The incidence of serious adverse events was similar among patients receiving Trospium Chloride Extended-Release Capsules and patients receiving placebo. No treatment-emergent serious adverse events in either treatment group were judged by the investigators as being possibly related to the study medication.

Table 1 lists those treatment emergent adverse events from the trials that were assessed by the investigator as possibly related to study medication, reported in at least 1% of Trospium Chloride Extended-Release Capsules patients, and were more common for the Trospium Chloride Extended-Release Capsules group than for placebo.

Table 1: Incidence of treatment-emergent adverse events reported in at

least 1% of patients judged by the investigator as at least possibly related to treatment and more common for the Trosipium Chloride Extended-Release Capsules group than for placebo

MedDRA Preferred term	Number of patients (%)	
	Placebo N=587	Trosipium Chloride Extended-Release Capsules N=578
Dry mouth	22 (3.7)	62 (10.7)
Constipation	9 (1.5)	49 (8.5)
Dry eye	1 (0.2)	9 (1.6)
Flatulence	3 (0.5)	9 (1.6)
Nausea	2 (0.3)	8 (1.4)
Abdominal pain	2 (0.3)	8 (1.4)
Dyspepsia	4 (0.7)	7 (1.2)
Urinary tract infection	5 (0.9)	7 (1.2)
Constipation aggravated	3 (0.5)	7 (1.2)
Abdominal distension	2 (0.3)	6 (1)
Nasal dryness	0 (0)	6 (1)

Additional adverse events reported in less than 1% of Trosipium Chloride Extended-Release Capsules treated patients and more common for Trosipium Chloride Extended-Release Capsules than placebo, judged by the investigator at least possibly related to treatment were: vision blurred, feces hard, back pain, somnolence, urinary retention, and dry skin.

Table 2 lists all treatment-emergent adverse events for the trials reported in at least 2% of all Trosipium Chloride Extended-Release Capsules patients and more common for the Trosipium Chloride Extended-Release Capsules group than for placebo without regard to the investigator's judgment on drug relatedness.

Table 2: Incidence of treatment-emergent adverse events reported in at least 2% of patients regardless of reported relationship to treatment and more common for the Trosipium Chloride Extended-Release Capsules group than for placebo

MedDRA Preferred term	Number of patients (%)	
	Placebo N=587	Trosipium Chloride Extended-Release Capsules N=578
Dry mouth	22 (3.7)	64 (11.1)
Constipation	10 (1.7)	52 (9)
Urinary tract infection	29 (4.9)	42 (7.3)
Nasopharyngitis	10 (1.7)	17 (2.9)
Influenza	9 (1.5)	13 (2.2)

Additional adverse events reported in less than 2% of Trospium Chloride Extended-Release Capsules treated patients and twice as frequent for Trospium Chloride Extended-Release Capsules compared to placebo, regardless of reported relationship to treatment were: tachycardia, dry eyes, abdominal pain, dyspepsia, abdominal distension, constipation aggravated, nasal dryness, and rash.

In the open-label treatment phase, the most common TEAEs reported in the 769 patients with at least 6 months exposure to Trospium Chloride Extended-Release Capsules were: constipation, and dry mouth. Urinary tract infection and rash was also reported in several patients, including one of each judged by the investigator to be possibly related to treatment. Several adverse events were reported as severe in the open-label treatment phase, including one urinary tract infection, two urinary retention events, and one aggravated constipation.

6.2 Post-marketing Experience

The following adverse reactions have been identified during post-approval use of trospium chloride. Because these reactions are reported voluntarily from a population of uncertain size, it is not always possible to reliably estimate their frequency or establish a causal relationship to drug exposure.

Gastrointestinal – gastritis; Cardiovascular – palpitations, supraventricular tachycardia, chest pain, syncope, “hypertensive crisis”; Immunological – Stevens-Johnson syndrome, anaphylactic reaction, angioedema; Nervous System – dizziness, confusion, vision abnormal, hallucinations, somnolence, and delirium; Musculoskeletal – rhabdomyolysis; General – rash.

7 DRUG INTERACTIONS

Trospium is metabolized by ester hydrolysis and excreted by the kidneys through a combination of tubular secretion and glomerular filtration. Based on in vitro data, no clinically relevant metabolic drug-drug interactions are anticipated with Trospium Chloride Extended-Release Capsules. However, some drugs which are actively secreted by the kidney may interact with Trospium Chloride Extended-Release Capsules by competing for renal tubular secretion.

The concomitant use of Trospium Chloride Extended-Release Capsules with other antimuscarinic agents that produce dry mouth, constipation, and other anticholinergic effects may increase the frequency and/or severity of such effects. Trospium Chloride Extended-Release Capsules may potentially alter the absorption of some concomitantly administered drugs due to anticholinergic effects on gastrointestinal motility.

7.1 Digoxin

Concomitant use of trospium chloride 20mg twice daily and digoxin did not affect the pharmacokinetics of either drug [see *Clinical Pharmacology* (12.3)].

7.2 Antacid

While the systemic exposure of trospium on average was comparable with and without antacid containing aluminum hydroxide and magnesium carbonate, 5 out of 11 individuals in a drug interaction study demonstrated either an increase or decrease in trospium exposure, in presence of antacid. The clinical relevance of these findings is not known [see *Clinical Pharmacology* (12.3)].

7.3 Metformin

Co-administration of 500 mg metformin immediate release tablets twice daily reduced the steady-state systemic exposure of trospium by approximately 29% for mean AUC (0-24) and by 34% for mean C_{max}. The effect of a decrease in trospium exposure on the efficacy of Trospium Chloride Extended-Release Capsules is unknown. The steady-state pharmacokinetics of metformin were comparable when administered with or without 60 mg Trospium Chloride Extended-Release Capsules once daily under fasted condition. The effect of metformin at higher doses on trospium PK is unknown [see *Clinical Pharmacology* (12.3)].

8 USE IN SPECIFIC POPULATIONS

8.1 Pregnancy

Teratogenic Effects

Pregnancy Category C: There are no adequate and well-controlled studies of Trospium Chloride Extended-Release Capsules in pregnant women. Trospium Chloride Extended-Release Capsules should be used during pregnancy only if the potential benefit to the patient outweighs the risk to the patient and fetus. Women who become pregnant during Trospium Chloride Extended-Release Capsules treatment are encouraged to contact their physician.

Trospium chloride was not teratogenic at statistically significant levels in rats or rabbits administered doses up to 200 mg/kg/day. This corresponds to systemic exposures up to approximately 16 and 32 times, respectively (based on AUC), the clinical exposure at the maximum recommended human dose (MRHD) of 60 mg. However, in rabbits, one fetus in each of the three treated dose groups (1, 1, and 32 times the MRHD) demonstrated multiple malformations, including umbilical hernia and skeletal malformations. A no effect level for maternal and fetal toxicity was observed at levels approximately equivalent to the clinical exposure at the MRHD (20 mg/kg/day in rats and rabbits). No developmental toxicity was observed in the offspring of female rats exposed pre- and post-natally to up to 200 mg/kg/day.

8.2 Labor and Delivery

The effect of Trospium Chloride Extended-Release Capsules on labor and delivery is unknown.

8.3 Nursing Mothers

Trospium chloride (2 mg/kg orally and 50 mcg/kg intravenously) was excreted, to a limited extent (less than 1%), into the milk of lactating rats (primarily as parent

compound). It is not known whether this drug is excreted into human milk. Because many drugs are excreted into human milk, Trospium Chloride Extended-Release Capsules should be used during lactation only if the potential benefit justifies the potential risk.

8.4 Pediatric Use

The safety and effectiveness of Trospium Chloride Extended-Release Capsules in pediatric patients have not been established.

8.5 Geriatric Use

Of 1,165 patients in Phase 3 clinical studies of Trospium Chloride Extended-Release Capsules, 37% (n=428) were ages 65 and over, while 12% (n=143) were ages 75 and over.

No overall differences in effectiveness were observed between those subjects aged 65 and over and younger subjects. In Trospium Chloride Extended-Release Capsules subjects ages 65 and over compared to younger subjects, the following adverse reactions were reported at a higher incidence: dry mouth, constipation, abdominal pain, dyspepsia, urinary tract infection and urinary retention. In subjects ages 75 and over, three reported a fall and in one of them a relationship to the event could not be excluded.

8.6 Renal Impairment

Severe renal impairment (creatinine clearance less than 30 mL/minute) may significantly alter the disposition of Trospium Chloride Extended-Release Capsules. In a study of immediate-release trospium chloride, 4.2-fold and 1.8-fold increases in mean AUC_(0-∞) and C_{max}, respectively, were detected in patients with severe renal impairment. Use of Trospium Chloride Extended-Release Capsules is not recommended in patients with severe renal impairment [see *Warnings and Precautions (5.4) and Clinical Pharmacology (12.3)*]. The pharmacokinetics of trospium chloride have not been studied in patients with creatinine clearance ranging from 30 to 80 mL/min.

Trospium is known to be substantially excreted by the kidney, and the risk of adverse reactions may be greater in patients with impaired renal function.

8.7 Hepatic Impairment

There is no information regarding the effect of severe hepatic impairment on exposure to Trospium Chloride Extended-Release Capsules. In a study of patients with mild and with moderate hepatic impairment, given 40 mg of immediate-release trospium chloride, mean C_{max} increased 12% and 63%, respectively, and mean AUC_(0-∞) decreased 5% and 15%, respectively, compared to healthy subjects. The clinical significance of these findings is unknown. Caution is advised, however, when administering Trospium Chloride Extended-Release Capsules to patients with moderate to severe hepatic impairment.

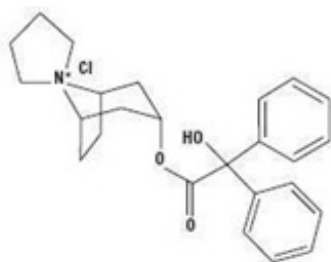
10 OVERDOSAGE

Overdosage with antimuscarinic agents, including Trospium Chloride Extended-Release

Capsules, can result in severe antimuscarinic effects. Supportive treatment should be provided according to symptoms. In the event of overdose, ECG monitoring is recommended.

11 DESCRIPTION

Trospium Chloride Extended-Release Capsules are an extended-release formulation of trospium chloride, a quaternary ammonium compound with the chemical name of Spiro [8- azoniabicyclo[3.2.1]octane-8,1'-pyrrolidinium], 3-[(hydroxydiphenylacetyl)oxy]-, chloride, (1 α , 3 β , 5 α). The empirical formula of trospium chloride is C₂₅H₃₀ClNO₃ and its molecular weight is 428. The structural formula of trospium chloride is represented below:



Trospium chloride is a fine, colorless to slightly yellow, crystalline solid. The compound's solubility in water is approximately 1 g/2 mL.

Trospium Chloride Extended-Release Capsules contain 60 mg of trospium chloride, a muscarinic antagonist, for oral administration. Each capsule also contains the following inactive ingredients: corn starch, ethylcellulose, FD&C Blue# 1, FD&C Red# 40, FD&C Yellow# 6, gelatin, hypromellose, methacrylic acid copolymer, polyethylene glycol, polysorbate 80, sodium lauryl sulfate, sucrose, talc, titanium dioxide, triacetin and triethyl citrate. In addition, capsule printing ink contains ammonium hydroxide, black iron oxide, propylene glycol and shellac glaze.

12 CLINICAL PHARMACOLOGY

12.1 Mechanism of Action

Trospium chloride is an antispasmodic, antimuscarinic agent.

Trospium chloride antagonizes the effect of acetylcholine on muscarinic receptors in cholinergically innervated organs including the bladder. Its parasympatholytic action reduces the tonus of smooth muscle in the bladder.

In vitro receptor binding studies have demonstrated the selectivity of trospium chloride for muscarinic over nicotinic receptors, and similar affinity for the M₂ and M₃ muscarinic receptor subtypes. M₂ and M₃ receptors are found in the bladder and may play a role in the pathogenesis of overactive bladder.

12.2 Pharmacodynamics

Placebo-controlled studies assessing the impact on urodynamic variables of an immediate-release formulation of trosipium chloride were conducted in patients with conditions characterized by involuntary detrusor contractions. The results demonstrated that trosipium chloride increases maximum cystometric bladder capacity and volume at first detrusor contraction.

Electrophysiology

The effect of 20 mg twice daily and up to 100 mg twice daily of an immediate-release formulation of trosipium chloride on QT interval was evaluated in a single-blind, randomized, placebo and active (moxifloxacin 400 mg daily) controlled, 5-day parallel trial in 170 male and female healthy volunteer subjects aged 18 to 45 years. The QT interval was measured over a 24-hour period at steady state. Trosipium chloride was not associated with an increase in individual corrected (QTcI) or Fridericia corrected (QTcF) QT interval at any time during steady state measurement, while moxifloxacin was associated with a 6.4 msec increase in QTcF.

In this study, asymptomatic, non-specific T-wave inversions were observed more often in subjects receiving trosipium chloride than in subjects receiving moxifloxacin or placebo following five days of treatment. The clinical significance of T-wave inversion in this study is unknown. This finding was not observed during routine safety monitoring in overactive bladder patients from 2 placebo-controlled clinical trials in 591 patients treated with 20 mg twice daily of immediate-release trosipium chloride, nor was it observed in 2 placebo-controlled clinical trials in 578 patients treated with Trosipium Chloride Extended-Release Capsules.

Also in this study, the immediate-release formulation of trosipium chloride was associated with an increase in heart rate that correlated with increasing plasma concentration, with a mean elevation in heart rate compared to placebo of 9 beats per minute for the 20 mg dose and of 18 beats per minute for the 100 mg dose. In the two Phase 3 Trosipium Chloride Extended-Release Capsules trials the mean increase in heart rate compared to placebo was approximately 3 beats per minute in both studies.

12.3 Pharmacokinetics

Absorption: Mean absolute bioavailability of a 20 mg immediate-release dose is 9.6% (range 4 to 16.1%). Following a single 60 mg dose of Trosipium Chloride Extended-Release Capsules, peak plasma concentration (C_{max}) of 2 ng/mL occurred 5 hours post dose. By contrast, following a single 20 mg dose of an immediate-release formulation of trosipium chloride, C_{max} was 2.7 ng/mL.

Effect of Food: Administration of Trosipium Chloride Extended-Release Capsules immediately after a high (50%) fat-content meal reduced the oral bioavailability of trosipium chloride by 35% for AUC_(0-Tlast) and by 60% for C_{max} . Other pharmacokinetic parameters such as T_{max} and $t_{1/2}$ were unchanged in the presence of food.

A summary of mean (\pm standard deviation) pharmacokinetic parameters for a single dose of 60 mg Trosipium Chloride Extended-Release Capsules is provided in Table 3.

Table 3: Mean (\pm SD) Pharmacokinetic Parameter Estimates for a Single 60 mg Oral Dose of Trospium Chloride Extended- Release Capsules in Healthy Volunteers

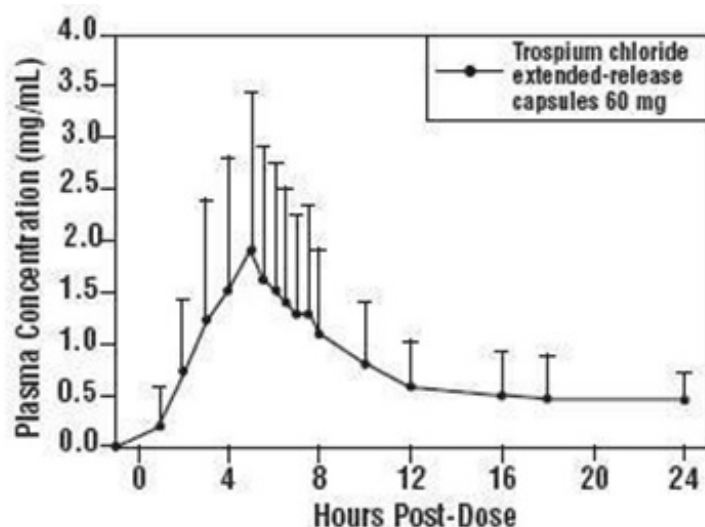
Treatment	AUC(0 -24) (ng●h/mL)	C _{max} (ng/mL)	T _{max} ^a (h)	t _{1/2} ^b (h)
Trospium Chloride Extended-Release Capsules 60 mg	18 \pm 13.4	2 \pm 1.5	5 (3 to 7.5)	36 \pm 22

^a T_{max} expressed as median (range).

^b t_{1/2max} was determined following multiple (10) doses.

The mean sample concentration-time (+ standard deviation) profile for Trospium Chloride Extended-Release Capsules is shown in Figure 1.

Figure 1: Mean (+SD) Concentration- Time Profile for a Single 60 mg Oral Dose of Trospium Chloride Extended- Release Capsules in Healthy Volunteers



Administration of Trospium Chloride Extended-Release Capsules immediately after a high (50%) fat-content meal reduced the oral bioavailability of trospium chloride by 35% for AUC (0-T_{last}) and by 60% for C_{max}. Other pharmacokinetic parameters such as T_{max} and t_{1/2} were unchanged in the presence of food. Coadministration with antacid had inconsistent effects on the oral bioavailability of Trospium Chloride Extended-Release Capsules.

Distribution: Protein binding ranged from 50 to 85%, depending upon the assessment method used, when a range of concentration levels of trospium chloride (0.5 to 50 mcg/L) were incubated in vitro with human serum.

The ratio of ³H-trospium chloride in plasma to whole blood was 1.6:1. This ratio indicates that the majority of ³H- trospium chloride is distributed in plasma.

Trospium chloride is widely distributed, with an apparent volume of distribution >600 L.

Metabolism: The metabolic pathway of trospium in humans has not been fully defined. Of the dose absorbed following oral administration, metabolites account for approximately 40% of the excreted dose. The major metabolic pathway of trospium is hypothesized as ester hydrolysis with subsequent conjugation of benzylic acid to form azoniaspironortropanol with glucuronic acid. CYP P450 does not contribute significantly to the elimination of trospium. Data taken from in vitro studies of human liver microsomes, investigating the inhibitory effect of trospium on seven CYP P450 isoenzyme substrates (CYP1A2, 2A6, 2C9, 2C19, 2D6, 2E1, and 3A4), suggest a lack of inhibition at clinically relevant concentrations.

Excretion: The plasma half-life for trospium following oral administration of Trospium Chloride Extended-Release Capsules is approximately 35 hours. After oral administration of an immediate-release formulation of ¹⁴C-labeled trospium chloride, a majority of the dose (85.2%) was recovered in feces and a smaller amount (5.8% of the dose) was recovered in urine. Of the radioactivity excreted into the urine, 60% was unchanged trospium.

The mean renal clearance for trospium (29.07 L/hour) is 4-fold higher than average glomerular filtration rate, indicating that active tubular secretion is a major route of elimination. There may be competition for elimination with other compounds that are also renally eliminated [see *Drug Interactions* (7)].

Drug Interactions

Digoxin: Concomitant use of 20 mg Trospium Chloride Immediate Release twice daily at steady state and a single dose of 0.5 mg digoxin in a crossover study with 40 male and female subjects did not affect the pharmacokinetics of either drug.

Antacid: A drug interaction study was conducted to evaluate the effect of an antacid containing aluminum hydroxide and magnesium carbonate on the pharmacokinetics of Trospium Chloride Extended-Release Capsules (n=11). While the systemic exposure of trospium on average was comparable with and without antacid, 5 individuals demonstrated either an increase or decrease in trospium exposure, in presence of antacid.

Metformin: A drug interaction study was conducted in which Trospium Chloride Extended-Release Capsules 60 mg once daily was co-administered with Glucophage® (metformin hydrochloride) 500 mg twice daily under steady-state conditions in 44 healthy subjects. Co-administration of 500 mg metformin immediate release tablets twice daily reduced the steady-state systemic exposure of trospium by approximately 29% for mean AUC₀₋₂₄ and by 34% for mean C_{max}. The effect of decrease in trospium exposure on the efficacy of Trospium Chloride Extended-Release Capsules is unknown. The steady-state pharmacokinetics of metformin were comparable when administered with or without 60 mg Trospium Chloride Extended-Release Capsules once daily under fasted condition. The effect of metformin at higher doses on trospium PK is unknown.

Specific Populations

Age: In a phase 3 clinical trial of Trospium Chloride Extended-Release Capsules, the observed plasma trospium concentrations were similar in older (greater than or equal to 65 years) and younger (less than 65 years) OAB patients.

Pediatric: The pharmacokinetics of Trospium Chloride Extended-Release Capsules were not evaluated in pediatric patients.

Race: Pharmacokinetic differences due to race have not been studied.

Gender: Gender differences in pharmacokinetics of Trospium Chloride Extended-Release Capsules have not been formally assessed. Data from healthy subjects suggests lower exposure in males compared to females.

Hepatic Impairment: There is no information regarding the effect of severe hepatic impairment on exposure to Trospium Chloride Extended-Release Capsules. In a study of patients with mild (Child- Pugh score 5 to 6) and with moderate (Child-Pugh score 7 to 8) hepatic impairment, given 40 mg of immediate-release trospium chloride, mean C_{max} increased 12% and 63% respectively, and mean $AUC_{(0-\infty)}$ decreased 5% and 15%, respectively, compared to healthy subjects.

Renal Impairment: The pharmacokinetics of Trospium Chloride Extended-Release Capsules in patients with severe renal impairment has not been evaluated. In a study of an immediate-release formulation of trospium chloride, 4.2-fold and 1.8-fold increases in mean $AUC_{(0-\infty)}$ and C_{max} , respectively, were detected in patients with severe renal impairment (creatinine clearance less than 30 mL/minute), compared with healthy subjects, along with the appearance of an additional elimination phase with a long half-life (~33 hours vs. 18 hours). Use of Trospium Chloride Extended-Release Capsules is not recommended in patients with severe renal impairment [see *Dosage and Administration* (2)]. The pharmacokinetics of trospium chloride have not been studied in people with creatinine clearance ranging from 30 to 80 mL/min.

13 NONCLINICAL TOXICOLOGY

13.1 Carcinogenesis, Mutagenesis, Impairment of Fertility

Carcinogenesis: Carcinogenicity studies with trospium chloride were conducted in mice and rats for 78 weeks and 104 weeks, respectively, at maximally tolerated doses. No evidence of a carcinogenic effect was found in either mice or rats administered up to 200 mg/kg/day (approximately 1 and 16 times, respectively (based on AUC), the expected clinical exposure levels at the maximum recommended human dose (MRHD) of 60 mg.

Mutagenesis: Trospium chloride was not mutagenic nor genotoxic in tests in vitro in bacteria (Ames test) and mammalian cells (L5178Y mouse lymphoma and CHO cells) or in vivo in the mouse micronucleus test.

Impairment of Fertility: No evidence of impaired fertility was observed in rats administered doses up to 200 mg/kg/day (about 16 times the expected clinical exposure

at the MRHD, based on AUC).

14 CLINICAL STUDIES

Trospium Chloride Extended-Release Capsules were evaluated for the treatment of patients with overactive bladder who had symptoms of urinary frequency, urgency and urge urinary incontinence in two 12-week, randomized, double-blind, placebo-controlled studies. For both studies, entry criteria required the presence of urge incontinence (predominance of urge), at least one incontinence episode per day, and 10 or more micturitions (voids) per day (assessed by 3-day urinary diary). Medical history and data from the baseline urinary diary confirmed the diagnosis. Approximately 88% of the patients enrolled completed the 12-week studies. The mean age was 60 years, and the majority of patients were female (84%) and Caucasian (86%).

The co-primary endpoints in the trials were the mean change from baseline to Week 12 in number of voids/24 hours (reductions in urinary frequency) and the mean change from baseline to Week 12 in number of incontinence episodes/24 hours. Secondary endpoints included mean change from baseline to Week 12 in volume per void.

Study 1 included 592 patients in both Trospium Chloride Extended-Release Capsules 60 mg and placebo groups. As illustrated in Table 4 and Figures 2 and 3, Trospium Chloride Extended-Release Capsules demonstrated statistically significantly ($p < 0.01$) greater reductions in the urinary frequency and incontinence episodes, and increases in void volume when compared to placebo starting at Week 1 and maintained through Weeks 4 and 12.

Table 4: Mean (SE) Change from Baseline in Urinary Frequency, Urge Incontinence Episodes and Void Volume in Study 1

Efficacy Endpoint^a	Week	Placebo	Trospium Chloride Extended-Release Capsules	P-Value
Urinary frequency / 24 hours		(N=300)	(N=292)	
Mean Baseline	0	12.7 (0.2)	12.8 (0.2)	
Mean Change from Baseline	1	- 1.2 (0.1)	- 1.7 (0.1)	0.0092
	4	- 1.6 (0.2)	- 2.4 (0.2)	<0.0001
	12	- 2 (0.2)	- 2.8 (0.2)	<0.0001
Urge incontinence episodes / week		(N=300)	(N=292)	
Mean Baseline	0	29 (1.3)	28.8 (1.3)	
Mean Change from Baseline	1	- 8.7 (1)	- 13 (0.9)	0.0003
	4	- 12.2 (1.1)	- 16.5 (1.2)	0.0054
	12	- 13.5 (1.1)	- 17.3 (1.2)	0.0024
Urinary volume / void (mL)		(N=300)	(N=290)	
Mean Baseline	0	155.9 (3)	151 (2.9)	
Mean Change from Baseline	1	12.1 (2.1)	21.6 (2.8)	0.0036
	4	17.2 (2.5)	30 (3.1)	0.0007
	12	18.9 (2.8)	29.8 (3.2)	0.0039

^atreatment differences assessed by rank ANOVA for intent-to-treat population, last observation carried forward (ITT:LOCF) data set

Figure 2: Mean Change from Baseline in Urinary Frequency/24 hours by Visit: Study 1

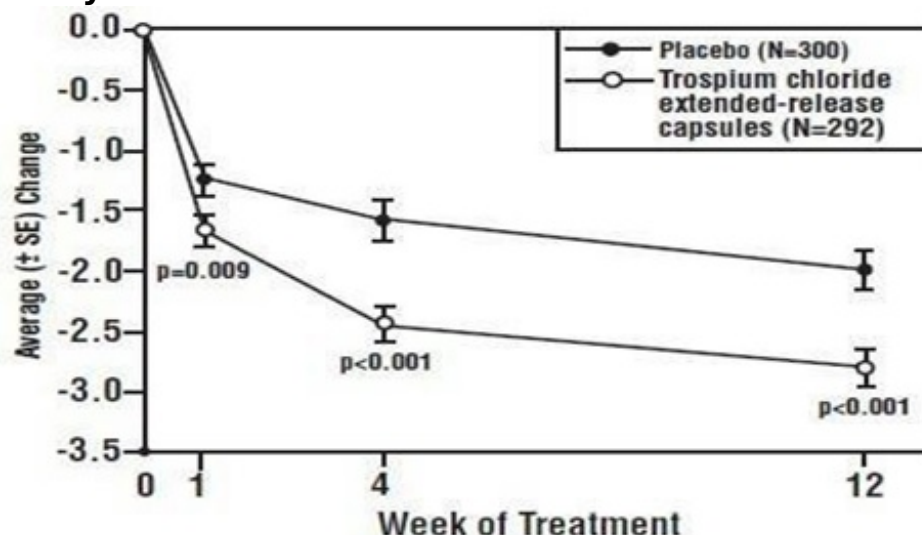
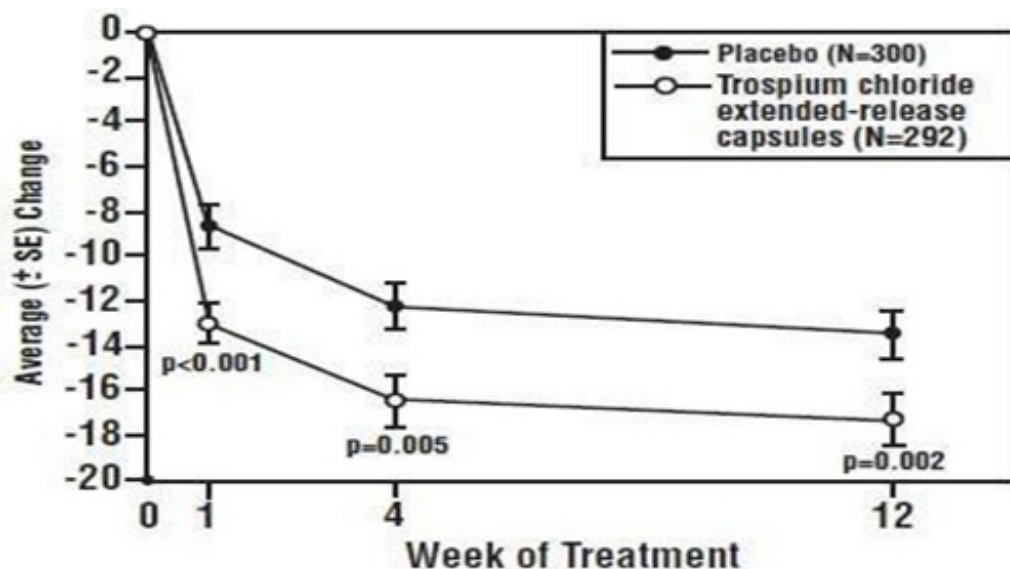


Figure 3: Mean Change from Baseline in Incontinence Episodes/Week by Visit: Study 1



Study 2 included 543 patients in both Trospium Chloride Extended-Release Capsules 60 mg and placebo groups and was identical in design to Study 1. As illustrated in Table 5 and Figures 4 and 5, Trospium Chloride Extended-Release Capsules demonstrated statistically significantly ($p<0.01$) greater reductions in urinary frequency and incontinence episodes, and increases in void volume when compared to placebo at Weeks 4 and 12. However, at Week 1, statistically significant reductions were seen in urinary incontinence episodes and volume void only.

Table 5: Mean (SE) Change from Baseline in Urinary Frequency, Urge

Incontinence Episodes and Void Volume in Study 2

Efficacy Endpoint ^a	Week	Placebo (N=276)	Trospium Chloride Extended-Release Capsules (N=267)	P- Value
Urinary Frequency / 24 hours				
Mean Baseline	0	12.9 (0.2)	12.8 (0.2)	
Mean Change from Baseline	1	- 1.2 (0.2)	- 1.4 (0.2)	0.0759
	4	- 1.7 (0.2)	- 2.3 (0.2)	0.0047
	12	- 1.8 (0.2)	- 2.5 (0.2)	0.0009
Urge incontinence episodes / week				
Mean Baseline	0	28.3 (1.4)	28.2 (1.2)	
Mean Change from Baseline	1	- 7.3 (1)	- 11.9 (1)	<0.0001
	4	- 10.6 (1.1)	- 15.8 (1.1)	<0.0001
	12	- 11.3 (1.2)	- 16.4 (1.3)	<0.0001
Urinary volume / void (mL)				
Mean Baseline	0	151.8 (2.8)	149.6 (2.9)	
Mean Change from Baseline	1	11.9 (2.5)	24.1 (2.4)	<0.0001
	4	19.6 (3.1)	29.3 (3)	0.0020
	12	17.8 (3.3)	31.5 (3.4)	0.0014

^atreatment differences assessed by rank ANOVA for intent-to-treat population, last observation carried forward (ITT:LOCF) data set

Figure 4: Mean Change from Baseline in Urinary Frequency/24 hours by Visit: Study 2

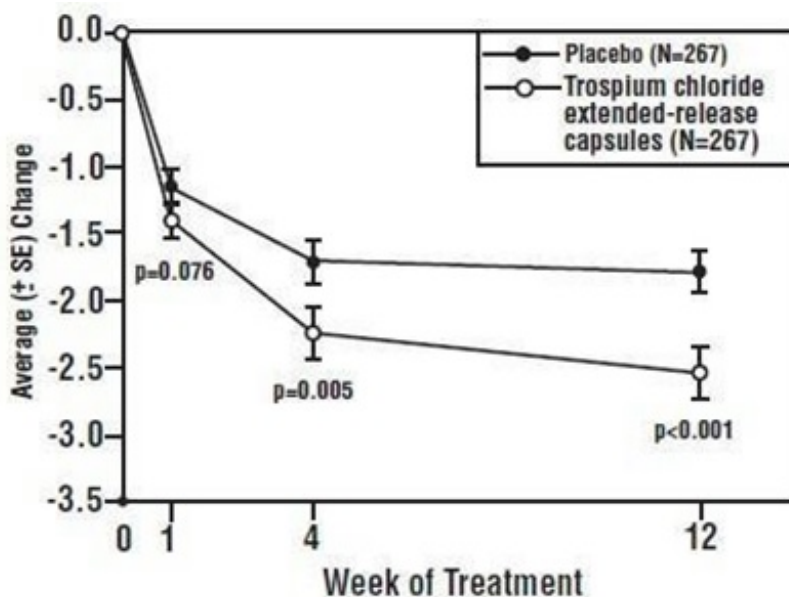
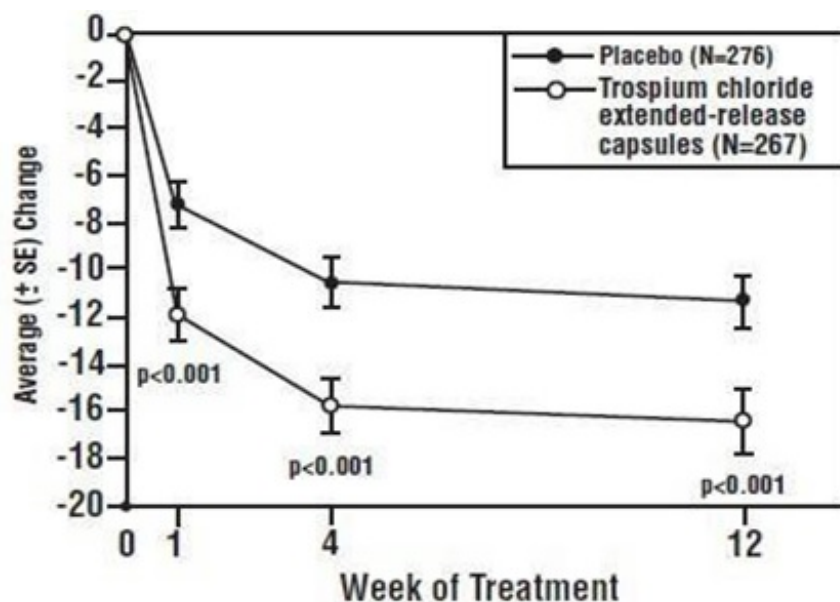


Figure 5: Mean Change from Baseline in Incontinence Episodes/Week by Visit: Study 2



16 HOW SUPPLIED/STORAGE AND HANDLING

Trosipium Chloride Extended-Release Capsules are supplied as 60 mg capsules (white opaque body and orange opaque cap, printed with "027" and "G60").

60 mg capsule, 30 count, HDPE bottle: NDC 71205-917-30

60 mg capsule, 60 count, HDPE bottle: NDC 71205-917-60

60 mg capsule, 90 count, HDPE bottle: NDC 71205-917-90

60 mg capsule, 100 count, HDPE bottle: NDC 71205-917-00

60 mg capsule, 120 count, HDPE bottle: NDC 71205-917-72

60 mg capsule, 500 count, HDPE bottle: NDC 71205-917-55

Store at 20° to 25°C (68° to 77°F), excursions permitted between 15° to 30°C (59° to 86°F) [see USP Controlled Room Temperature]

Dispense in a tight, light-resistant container as defined in the USP, with a child-resistant closure.

17 PATIENT COUNSELING INFORMATION

"See FDA-Approved Patient labeling (Patient Information)"

17.1 Angioedema

Patients should be informed that Trosipium Chloride Extended-Release Capsules may produce angioedema which could result in life-threatening airway obstruction. Patients should be advised to promptly discontinue Trosipium Chloride Extended-Release Capsules therapy and seek immediate medical attention if they experience edema of the tongue, edema of the laryngopharynx, or difficulty breathing.

17.2 When Not to Use

Prior to treatment, patients should fully understand the risks and benefits of Trospium Chloride Extended-Release Capsules. In particular, patients should be informed not to take Trospium Chloride Extended-Release Capsules if they:

- have urinary retention;
- gastric retention;
- uncontrolled narrow-angle glaucoma;
- are allergic to any component of Trospium Chloride Extended-Release Capsules

17.3 Administration

Patients should be instructed regarding the recommended dosing and administration of Trospium Chloride Extended-Release Capsules :

- Take one Trospium Chloride Extended-Release Capsule daily in the morning with water.
- Take Trospium Chloride Extended-Release Capsules on an empty stomach or at least 1 hour before a meal.
- Use of alcoholic beverages within 2 hours of dosing with Trospium Chloride Extended-Release Capsules is not recommended.

17.4 Adverse Reactions

Patients should be informed that the most common side effects with Trospium Chloride Extended-Release Capsules are dry mouth and constipation and that other less common side effects include trouble emptying the bladder, blurred vision, and heat prostration. Because anticholinergics, such as Trospium Chloride Extended-Release Capsules , may produce dizziness or blurred vision, patients should be advised to exercise caution in decisions to engage in potentially dangerous activities until the drug's effects have been determined. Patients should be informed that alcohol may enhance the drowsiness caused by anticholinergic agents.

Dispense with Patient Information is also available at:
<http://www.granulesindia.com/U.S.ProductCatalog.php>

Manufactured By:

Granules Pharmaceuticals Inc.

Chantilly, VA 20151

Repackaged and Relabeled By:

Proficient Rx LP

Thousand Oaks, CA 91320

Rev. 09/2020

Patient Information

Trospium (TROSE-pee-um) Chloride Extended-Release Capsules

Read the Patient Information that comes with Trospium Chloride Extended-Release Capsules before you start taking it and each time you get a refill. There may be new information. This leaflet does not take the place of talking with your doctor about your medical condition or your treatment.

What are Trospium Chloride Extended-Release Capsules ?

Trospium Chloride Extended-Release Capsules are a prescription medicine used to treat adults with overactive bladder who have the following symptoms:

- a strong need to urinate right away;
- leaking or wetting accidents due to a strong need to urinate right away;
- a need to urinate often.

Who should not take Trospium Chloride Extended-Release Capsules ?

Do not take Trospium Chloride Extended-Release Capsules if you:

- have trouble emptying your bladder;
- have delayed or slow emptying of your stomach;
- have an eye problem called “uncontrolled narrow-angle glaucoma”;
- are allergic to Trospium Chloride Extended-Release Capsules or any of its ingredients. see the end of this leaflet for a complete list of ingredients.

Trospium Chloride Extended-Release Capsules have not been studied in children under the age of 18 years.

What should I tell my doctor before starting Trospium Chloride Extended-Release Capsules ?

Tell your doctor about all of your medical conditions including if you:

- have any stomach or intestinal problems or problems with constipation;

- have trouble emptying your bladder or have a weak urine stream;
- have an eye problem called narrow-angle glaucoma;
- have kidney problems;
- have liver problems;
- are pregnant or planning to become pregnant. It is not known if Trospium Chloride Extended-Release Capsules can harm your unborn baby.
- are breastfeeding. It is not known if trospium passes into breast milk and if it can harm your baby. You should talk to your doctor about the best way to feed your baby if you are taking Trospium Chloride Extended-Release Capsules .

Tell your doctor about all the medicines you take including prescription and nonprescription medicines, vitamins and herbal supplements. Trospium Chloride Extended-Release Capsules and certain other medicines can interact and make some side effects worse. Trospium Chloride Extended-Release Capsules can affect how other medicines are handled by the body.

Know all the medicines you take. Keep a list of them with you to show your doctor and pharmacist each time you get a new medicine.

How should I take Trospium Chloride Extended-Release Capsules ?

Take Trospium Chloride Extended-Release Capsules exactly as prescribed.

- Take one Trospium Chloride Extended-Release Capsule daily in the morning with water.
- Take Trospium Chloride Extended-Release Capsules on an empty stomach or at least 1 hour before a meal.
- Do not take alcohol within 2 hours of taking Trospium Chloride Extended-Release Capsules.
- If you take too much Trospium Chloride Extended-Release Capsules, call your local Poison Control Center or go to an emergency room right away.

What are the possible side effects of Trospium Chloride Extended-Release Capsules ?

Trospium Chloride Extended-Release Capsules may cause allergic reactions that may be serious. Symptoms of a serious allergic reaction may include swelling of the face, lips, throat or tongue. If you experience these symptoms, you should stop taking Trospium Chloride Extended-Release Capsules and get emergency medical help right away.

The most common side effects with Trospium Chloride Extended-Release Capsules are:

- dry mouth;
- constipation.

Trospium Chloride Extended-Release Capsules may cause other less common side effects, including:

- trouble emptying the bladder;
- blurred vision and drowsiness. Do not drive or operate heavy machinery until you know how Trospium Chloride Extended-Release Capsules affect you.
- heat prostration. Due to decreased sweating, heat prostration can occur when drugs such as Trospium Chloride Extended-Release Capsules are used in a hot environment.

Tell your doctor if you have any side effects that bother you or that do not go away.

These are not all possible side effects of Trospium Chloride Extended-Release Capsules . For more information, ask your doctor, healthcare professional or pharmacist.

How should I store Trospium Chloride Extended-Release Capsules ?

- Keep Trospium Chloride Extended-Release Capsules and all other medicines out of the reach of children.
- Store Trospium Chloride Extended-Release Capsules at 20° to 25°C (68° to 77°F), excursions permitted between 15° to 30°C (59° to 86°F) [see USP Controlled Room Temperature]
- Safely dispose of Trospium Chloride Extended-Release Capsules that are out of date or that you no longer need.

General information about Trospium Chloride Extended-Release Capsules

Medicines are sometimes prescribed for conditions that are not mentioned in patient information leaflets. Do not use Trospium Chloride Extended-Release Capsules for a condition for which it was not prescribed. Do not give Trospium Chloride Extended-

Release Capsules to other people, even if they have the same symptoms you have. It may harm them.

This leaflet summarizes the most important information about Trosium Chloride Extended-Release Capsules . If you would like more information, talk with your doctor. You can ask your doctor or pharmacist for information about Trosium Chloride Extended-Release Capsules that is written for health professionals. You can also call Granules' product information department at 1-877-770-3183.

What are the ingredients in Trosium Chloride Extended-Release Capsules ?

Active Ingredient: trosium chloride.

Inactive Ingredients: corn starch, ethylcellulose, FD&C Blue# 1, FD&C Red# 40, FD&C Yellow# 6, gelatin, hypromellose, methacrylic acid copolymer, polyethylene glycol, polysorbate 80, sodium lauryl sulfate, sucrose, talc, titanium dioxide, triacetin and triethyl citrate. In addition, capsule printing ink contains ammonium hydroxide, black iron oxide, propylene glycol and shellac glaze.

* Listed trademarks are the property of their respective owners.

Dispense with Patient Information is also available at:
<http://www.granulesindia.com/U.S.ProductCatalog.php>

Manufactured By:

Granules Pharmaceuticals Inc.

Chantilly, VA 20151

Repackaged and Relabeled By:

Proficient Rx LP

Thousand Oaks, CA 91320

Rev. 09/2020

PACKAGE LABEL.PRINCIPAL DISPLAY PANEL



NDC 71205-917-00

Packaged By: Proficient Rx LP
Thousand Oaks, CA 91320

RX Only

Trospium Chloride 60mg

#100 ER Capsules (Once-Daily)

Each Extended-Release Capsule contains:
Trospium Chloride 60 mg

(White opaque body and orange opaque cap, printed with "027" and "G60").

Product ID: QT091700

Usual Dosage: See package outsert for
full prescribing information.

Mfr. By: Granules Pharmaceuticals Inc., Chantilly, VA 20151

Store at 20°-25°C (68°-77°F) Dispense in a tight, light-resistant container as defined in the USP, with a child-resistant closure.

Keep medication out of the reach of children

GTIN: 00371205917005
SN# MASTER
Exp. 00/00/00
Lot # 00000

TROSPIUM CHLORIDE

trospium chloride capsule, extended release

Product Information

Product Type	HUMAN PRESCRIPTION DRUG	Item Code (Source)	NDC:71205-917(NDC:70010-027)
Route of Administration	ORAL		

Active Ingredient/Active Moiety

Ingredient Name	Basis of Strength	Strength
TROSPIUM CHLORIDE (UNII: 1E6682427E) (TROSPIUM - UNII:T4Y8ORK057)	TROSPIUM CHLORIDE	60 mg

Inactive Ingredients

Ingredient Name	Strength
AMMONIA (UNII: 5138Q19F1X)	
FERROSFERRIC OXIDE (UNII: XM0M87F357)	
ETHYLCELLULOSE, UNSPECIFIED (UNII: 7Z8S9VYZ4B)	
FD&C BLUE NO. 1 (UNII: H3R47K3TBD)	
FD&C RED NO. 40 (UNII: WZB9127XOA)	
FD&C YELLOW NO. 6 (UNII: H77VEI93A8)	
GELATIN, UNSPECIFIED (UNII: 2G86QN327L)	
HYPROMELLOSE, UNSPECIFIED (UNII: 3NXW29V3WO)	
POLY(METHYL ACRYLATE-CO-METHYL METHACRYLATE-CO-METHACRYLIC ACID 7:3:1; 280000 MW) (UNII: 99Q3C7L77T)	
POLYETHYLENE GLYCOL, UNSPECIFIED (UNII: 3WJQ0SDW1A)	
POLYSORBATE 80 (UNII: 6OZP39ZG8H)	
PROPYLENE GLYCOL (UNII: 6DC9Q167V3)	

SHELLAC (UNII: 46N107B71O)	
STARCH, CORN (UNII: O8232NY3SJ)	
SODIUM LAURYL SULFATE (UNII: 368GB5141J)	
SUCROSE (UNII: C151H8M554)	
TALC (UNII: 7SEV7J4R1U)	
TITANIUM DIOXIDE (UNII: 15FIX9V2JP)	
TRIACETIN (UNII: XHX3C3X673)	
TRIETHYL CITRATE (UNII: 8Z96QXD6UM)	

Product Characteristics

Color	orange (orange-white)	Score	no score
Shape	CAPSULE	Size	22mm
Flavor		Imprint Code	G60;027
Contains			

Packaging

#	Item Code	Package Description	Marketing Start Date	Marketing End Date
1	NDC:71205-917-30	30 in 1 BOTTLE; Type 0: Not a Combination Product	07/08/2021	
2	NDC:71205-917-60	60 in 1 BOTTLE; Type 0: Not a Combination Product	07/08/2021	
3	NDC:71205-917-90	90 in 1 BOTTLE; Type 0: Not a Combination Product	07/08/2021	
4	NDC:71205-917-00	100 in 1 BOTTLE; Type 0: Not a Combination Product	07/08/2021	
5	NDC:71205-917-72	120 in 1 BOTTLE; Type 0: Not a Combination Product	07/08/2021	
6	NDC:71205-917-55	500 in 1 BOTTLE; Type 0: Not a Combination Product	07/08/2021	

Marketing Information

Marketing Category	Application Number or Monograph Citation	Marketing Start Date	Marketing End Date
ANDA	ANDA213185	08/19/2020	

Labeler - Proficient Rx LP (079196022)

Establishment

Name	Address	ID/FEI	Business Operations
Proficient Rx LP		079196022	REPACK(71205-917) , RELABEL(71205-917)