

# **TOLVAPTAN- tolvaptan tablet**

## **Par Pharmaceutical, Inc.**

-----

### **HIGHLIGHTS OF PRESCRIBING INFORMATION**

**These highlights do not include all the information needed to use TOLVAPTAN TABLETS safely and effectively. See full prescribing information for TOLVAPTAN TABLETS.**

**TOLVAPTAN tablets for oral use**

**Initial U.S. Approval: 2009**

**WARNING: (A) INITIATE AND RE-INITIATE IN A HOSPITAL AND MONITOR SERUM SODIUM (B) NOT FOR USE FOR AUTOSOMAL DOMINANT POLYCYSTIC KIDNEY DISEASE (ADPKD)**

*See full prescribing information for complete boxed warning.*

**(A) Initiate and re-initiate in a hospital and monitor serum sodium**

- Tolvaptan should be initiated and re-initiated in patients only in a hospital where serum sodium can be monitored closely.
- Too rapid correction of hyponatremia (e.g., >12 mEq/L/24 hours) can cause osmotic demyelination resulting in dysarthria, mutism, dysphagia, lethargy, affective changes, spastic quadriparesis, seizures, coma and death. In susceptible patients, including those with severe malnutrition, alcoholism or advanced liver disease, slower rates of correction may be advisable.

**(B) Not for use for autosomal dominant polycystic kidney disease (ADPKD)**

- Because of the risk of hepatotoxicity, tolvaptan should not be used for ADPKD outside of the FDA-approved REMS( 4)

-----**RECENT MAJOR CHANGES**-----

Warnings and Precautions (5.5, 5.7) 04/2021

-----**INDICATIONS AND USAGE**-----

Tolvaptan tablets are a selective vasopressin V<sub>2</sub>-receptor antagonist indicated for the treatment of clinically significant hypovolemic and euvolemic hyponatremia [serum sodium <125 mEq/L or less marked hyponatremia that is symptomatic and has resisted correction with fluid restriction], including patients with heart failure and Syndrome of Inappropriate Antidiuretic Hormone (SIADH) (1)

*Limitations of Use:*

- Patients requiring intervention to raise serum sodium urgently to prevent or to treat serious neurological symptoms should not be treated with tolvaptan tablets (1)
- It has not been established that tolvaptan tablets provides a symptomatic benefit to patients (1)

-----**DOSAGE AND ADMINISTRATION**-----

- Tolvaptan tablets should be initiated and re-initiated in a hospital (2.1)
- The recommended starting dose is 15 mg once daily. Dosage may be increased at intervals  $\geq 24$  hr to 30 mg once daily, and to a maximum of 60 mg once daily as needed to raise serum sodium. (2.1)

-----**DOSAGE FORMS AND STRENGTHS**-----

- Tablets: 15 mg and 30 mg (3)

-----**CONTRAINDICATIONS**-----

- Use in patients with autosomal dominant polycystic kidney disease (ADPKD) outside of FDA approved REMS ( 4)
- Patients who are unable to respond appropriately to thirst ( 4)
- Hypovolemic hyponatremia ( 4)
- Concomitant use of strong CYP 3A inhibitors ( 4)
- Anuria ( 4)
- Hypersensitivity ( 4)

-----**WARNINGS AND PRECAUTIONS**-----

- Liver injury: Limit treatment duration to 30 days. If hepatic injury is suspected, discontinue tolvaptan. Avoid use in patients with underlying liver disease (5.2)

- Dehydration and hypovolemia may require intervention (5.3)
- Avoid use with hypertonic saline (5.4)
- Avoid use with moderate to strong CYP 3A inhibitors (5.5)
- Monitor serum potassium in patients with potassium >5 mEq/L or on drugs known to increase potassium (5.6)
- Urinary outflow obstruction: Urinary output must be secured (5.7)

-----**ADVERSE REACTIONS**-----

Most common adverse reactions (≥5% placebo) are thirst, dry mouth, asthenia, constipation, pollakiuria or polyuria, and hyperglycemia (6.1)

**To report SUSPECTED ADVERSE REACTIONS, contact Par Pharmaceutical at 1-800-828-9393 or FDA at 1-800-FDA-1088 ([www.fda.gov/medwatch](http://www.fda.gov/medwatch)).**

-----**DRUG INTERACTIONS**-----

Avoid concomitant use with:

- Moderate CYP3A inhibitors (7.1)
- Strong CYP3A inducers (7.1)
- V<sub>2</sub>-receptor antagonists (7.3)

Monitor serum potassium during concomitant therapy with (7.2):

- Angiotensin receptor blockers
- Angiotensin converting enzyme inhibitors

Potassium sparing diuretics

-----**USE IN SPECIFIC POPULATIONS**-----

- Pregnancy: may cause fetal harm (8.1)
- Lactation: Breastfeeding not recommended (8.2)
- Pediatric Use: There are no studies (8.4)

**See 17 for PATIENT COUNSELING INFORMATION and Medication Guide.**

**Revised: 3/2022**

**FULL PRESCRIBING INFORMATION: CONTENTS\***

**WARNING: (A) INITIATE AND RE-INITIATE IN A HOSPITAL AND MONITOR SERUM SODIUM (B) NOT FOR USE FOR AUTOSOMAL DOMINANT POLYCYSTIC KIDNEY DISEASE (ADPKD)**

**1 INDICATIONS AND USAGE**

**2 DOSAGE AND ADMINISTRATION**

- 2.1 Recommended Dosage
- 2.2 Drug Withdrawal

**3 DOSAGE FORMS AND STRENGTHS**

**4 CONTRAINDICATIONS**

**5 WARNINGS AND PRECAUTIONS**

- 5.1 Too Rapid Correction of Serum Sodium Can Cause Serious Neurologic Sequelae
- 5.2 Liver Injury
- 5.3 Dehydration and Hypovolemia
- 5.4 Co-administration with Hypertonic Saline
- 5.5 Drug Interactions
- 5.6 Hyperkalemia or Drugs that Increase Serum Potassium
- 5.7 Acute Urinary Retention with Overflow Obstruction

**6 ADVERSE REACTIONS**

- 6.1 Clinical Trials Experience
- 6.2 Postmarketing Experience

## **7 DRUG INTERACTIONS**

7.1 CYP3A Inhibitors and Inducers

7.2 Angiotensin Receptor Blockers, Angiotensin Converting Enzyme Inhibitors and Potassium Sparing Diuretics

7.3 V<sub>2</sub>-Receptor Agonist

## **8 USE IN SPECIFIC POPULATIONS**

8.1 Pregnancy

8.2 Lactation

8.4 Pediatric Use

8.5 Geriatric Use

8.6 Use in Patients with Hepatic Impairment

8.7 Use in Patients with Renal Impairment

## **10 OVERDOSAGE**

## **11 DESCRIPTION**

## **12 CLINICAL PHARMACOLOGY**

12.1 Mechanism of Action

12.2 Pharmacodynamics

12.3 Pharmacokinetics

## **13 NONCLINICAL TOXICOLOGY**

13.1 Carcinogenesis, Mutagenesis, Impairment of Fertility

## **14 CLINICAL STUDIES**

14.1 Hyponatremia

14.2 Heart Failure

## **16 HOW SUPPLIED/STORAGE AND HANDLING**

## **17 PATIENT COUNSELING INFORMATION**

MEDICATION GUIDE

\* Sections or subsections omitted from the full prescribing information are not listed.

---

## **FULL PRESCRIBING INFORMATION**

**WARNING: (A) INITIATE AND RE-INITIATE IN A HOSPITAL AND MONITOR SERUM SODIUM (B) NOT FOR USE FOR AUTOSOMAL DOMINANT POLYCYSTIC KIDNEY DISEASE (ADPKD)**

**(A) Initiate and re-initiate in a hospital and monitor serum sodium**

**Tolvaptan should be initiated and re-initiated in patients only in a hospital where serum sodium can be monitored closely.**

**Too rapid correction of hyponatremia (e.g., >12 mEq/L/24 hours) can cause osmotic demyelination resulting in dysarthria, mutism, dysphagia, lethargy, affective changes, spastic quadriparesis, seizures, coma and death. In susceptible patients, including those with severe malnutrition, alcoholism or advanced liver disease, slower rates of correction may be advisable.**

**(B) Not for use for autosomal dominant polycystic kidney disease (ADPKD)**

**Because of the risk of hepatotoxicity, tolvaptan should not be used for ADPKD outside of the FDA-approved REMS [see Contraindications (4)].**

## **1 INDICATIONS AND USAGE**

Tolvaptan tablets are indicated for the treatment of clinically significant hypervolemic and euvolemic hyponatremia (serum sodium <125 mEq/L or less marked hyponatremia that is symptomatic and has resisted correction with fluid restriction), including patients with heart failure and Syndrome of Inappropriate Antidiuretic Hormone (SIADH).

### **Limitations of Use:**

Patients requiring intervention to raise serum sodium urgently to prevent or to treat serious neurological symptoms should not be treated with tolvaptan tablets.

It has not been established that raising serum sodium with tolvaptan tablets provides a symptomatic benefit to patients.

## **2 DOSAGE AND ADMINISTRATION**

### **2.1 Recommended Dosage**

Patients should be in a hospital for initiation and re-initiation of therapy to evaluate the therapeutic response and because too rapid correction of hyponatremia can cause osmotic demyelination resulting in dysarthria, mutism, dysphagia, lethargy, affective changes, spastic quadriparesis, seizures, coma and death.

The usual starting dose for tolvaptan tablets is 15 mg administered once daily without

regard to meals. Increase the dose to 30 mg once daily, after at least 24 hours, to a maximum of 60 mg once daily, as needed to achieve the desired level of serum sodium. Do not administer tolvaptan tablets for more than 30 days to minimize the risk of liver injury [see *Warnings and Precautions (5.2)*].

During initiation and titration, frequently monitor for changes in serum electrolytes and volume. Avoid fluid restriction during the first 24 hours of therapy. Patients receiving tolvaptan tablets should be advised that they can continue ingestion of fluid in response to thirst [see *Warnings and Precautions (5.1)*].

## **2.2 Drug Withdrawal**

Following discontinuation from tolvaptan tablets, patients should be advised to resume fluid restriction and should be monitored for changes in serum sodium and volume status.

## **3 DOSAGE FORMS AND STRENGTHS**

Tolvaptan tablets are available in 15 mg and 30 mg tablets [see *How Supplied/Storage and Handling (16)*].

## **4 CONTRAINDICATIONS**

Tolvaptan tablets are contraindicated in the following conditions:

- Patients with autosomal dominant polycystic kidney disease (ADPKD) outside of FDA-approved REMS [see *Warnings and Precautions (5.2)*]
- Unable to sense or respond to thirst
- Hypovolemic hyponatremia
- Taking strong CYP3A inhibitors [see *Warnings and Precautions (5.5)*]
- Anuria
- Hypersensitivity (e.g., anaphylactic shock, rash generalized) to tolvaptan or any components of the product
- [see *Adverse Reactions (6)*]

## **5 WARNINGS AND PRECAUTIONS**

### **5.1 Too Rapid Correction of Serum Sodium Can Cause Serious Neurologic Sequelae**

Osmotic demyelination syndrome is a risk associated with too rapid correction of hyponatremia (e.g., >12 mEq/L/24 hours). Osmotic demyelination results in dysarthria, mutism, dysphagia, lethargy, affective changes, spastic quadriparesis, seizures, coma or death. In susceptible patients, including those with severe malnutrition, alcoholism or advanced liver disease, slower rates of correction may be advisable. In controlled clinical trials in which tolvaptan was administered in titrated doses starting at 15 mg once daily, 7% of tolvaptan-treated subjects with a serum sodium <130 mEq/L had an increase in serum sodium greater than 8 mEq/L at approximately 8 hours and 2% had an increase greater than 12 mEq/L at 24 hours. Approximately 1% of placebo-treated subjects with a serum sodium <130 mEq/L had a rise greater than 8 mEq/L at 8 hours and no patient

had a rise greater than 12 mEq/L/24 hours. Osmotic demyelination syndrome has been reported in association with tolvaptan therapy [see *Adverse Reactions (6.2)*] Patients treated with tolvaptan should be monitored to assess serum sodium concentrations and neurologic status, especially during initiation and after titration. Subjects with SIADH or very low baseline serum sodium concentrations may be at greater risk for too-rapid correction of serum sodium. In patients receiving tolvaptan who develop too rapid a rise in serum sodium, discontinue or interrupt treatment with tolvaptan and consider administration of hypotonic fluid. Fluid restriction during the first 24 hours of therapy with tolvaptan may increase the likelihood of overly-rapid correction of serum sodium, and should generally be avoided. Co-administration of diuretics also increases the risk of too rapid correction of serum sodium and such patients should undergo close monitoring of serum sodium.

## **5.2 Liver Injury**

Tolvaptan can cause serious and potentially fatal liver injury. In placebo-controlled studies and an open label extension study of chronically administered tolvaptan in patients with ADPKD, cases of serious liver injury attributed to tolvaptan, generally occurring during the first 18 months of therapy, were observed. In postmarketing experience with tolvaptan in ADPKD, acute injury resulting in liver failure requiring liver transplantation has been reported. Tolvaptan should not be used to treat ADPKD outside of the FDA-approved risk evaluation and mitigation strategy (REMS) for ADPKD patients [see *Contraindications (4.1)*].

Patients with symptoms that may indicate liver injury, including fatigue, anorexia, right upper abdominal discomfort, dark urine or jaundice should discontinue treatment with tolvaptan.

Limit duration of therapy with tolvaptan to 30 days. Avoid use in patients with underlying liver disease, including cirrhosis, because the ability to recover from liver injury may be impaired [see *Adverse Reactions (6.1)*].

## **5.3 Dehydration and Hypovolemia**

Tolvaptan therapy induces copious aquaresis, which is normally partially offset by fluid intake. Dehydration and hypovolemia can occur, especially in potentially volume-depleted patients receiving diuretics or those who are fluid restricted. In multiple-dose, placebo-controlled trials in which 607 hyponatremic patients were treated with tolvaptan, the incidence of dehydration was 3.3% for tolvaptan and 1.5% for placebo-treated patients. In patients receiving tolvaptan who develop medically significant signs or symptoms of hypovolemia, interrupt or discontinue tolvaptan therapy and provide supportive care with careful management of vital signs, fluid balance and electrolytes. Fluid restriction during therapy with tolvaptan may increase the risk of dehydration and hypovolemia. Patients receiving tolvaptan should continue ingestion of fluid in response to thirst.

## **5.4 Co-administration with Hypertonic Saline**

Concomitant use with hypertonic saline is not recommended.

## **5.5 Drug Interactions**

Tolvaptan is a substrate of CYP3A. Moderate to strong CYP3A inhibitors can lead to a marked increase in tolvaptan concentrations [see *Drug Interactions (7.1)*]. Do not use

tolvaptan with strong inhibitors of CYP3A [see *Contraindications (4)*] and avoid concomitant use with moderate CYP3A inhibitors.

## **5.6 Hyperkalemia or Drugs that Increase Serum Potassium**

Treatment with tolvaptan is associated with an acute reduction of the extracellular fluid volume which could result in increased serum potassium. Serum potassium levels should be monitored after initiation of tolvaptan treatment in patients with a serum potassium >5 mEq/L as well as those who are receiving drugs known to increase serum potassium levels.

## **5.7 Acute Urinary Retention with Overflow Obstruction**

Patients with partial obstruction of urinary outflow, for example, patients with prostatic hypertrophy or impairment of micturition, have an increased risk of developing acute retention. Do not administer tolvaptan in patients with uncorrected urinary outflow obstruction.

# **6 ADVERSE REACTIONS**

## **6.1 Clinical Trials Experience**

Because clinical trials are conducted under widely varying conditions, adverse reactions rates observed in the clinical trials of a drug cannot be directly compared to rates in the clinical trials of another drug and may not reflect the rates observed in practice. The adverse event information from clinical trials does, however, provide a basis for identifying the adverse events that appear to be related to drug use and for approximating rates.

In multiple-dose, placebo-controlled trials, 607 hyponatremic patients (serum sodium <135 mEq/L) were treated with tolvaptan. The mean age of these patients was 62 years; 70% of patients were male and 82% were Caucasian. One hundred eighty nine (189) tolvaptan-treated patients had a serum sodium <130 mEq/L, and 52 patients had a serum sodium <125 mEq/L. Hyponatremia was attributed to cirrhosis in 17% of patients, heart failure in 68% and SIADH/other in 16%. Of these patients, 223 were treated with the recommended dose titration (15 mg titrated to 60 mg as needed to raise serum sodium).

Overall, over 4,000 patients have been treated with oral doses of tolvaptan in open-label or placebo-controlled clinical trials. Approximately 650 of these patients had hyponatremia; approximately 219 of these hyponatremic patients were treated with tolvaptan for 6 months or more.

The most common adverse reactions (incidence  $\geq$ 5% more than placebo) seen in two 30-day, double-blind, placebo-controlled hyponatremia trials in which tolvaptan was administered in titrated doses (15 mg to 60 mg once daily) were thirst, dry mouth, asthenia, constipation, pollakiuria or polyuria and hyperglycemia. In these trials, 10% (23/223) of tolvaptan-treated patients discontinued treatment because of an adverse event, compared to 12% (26/220) of placebo-treated patients; no adverse reaction resulting in discontinuation of trial medication occurred at an incidence of >1% in tolvaptan-treated patients.

Table 1 lists the adverse reactions reported in tolvaptan-treated patients with hyponatremia (serum sodium <135 mEq/L) and at a rate at least 2% greater than placebo-treated patients in two 30-day, double-blind, placebo-controlled trials. In these studies, 223 patients were exposed to tolvaptan (starting dose 15 mg, titrated to 30 and 60 mg as needed to raise serum sodium). Adverse events resulting in death in these trials were 6% in tolvaptan-treated-patients and 6% in placebo-treated patients.

**Table 1. Adverse Reactions (>2% more than placebo) in Tolvaptan-Treated Patients in Double-Blind, Placebo-Controlled Hyponatremia Trials**

<b>System Organ Class MedDRA Preferred Term</b>	<b>Tolvaptan 15 mg/day-60 mg/day (N = 223) n (%)</b>	<b>Placebo (N = 220) n (%)</b>
<b>Gastrointestinal Disorders</b>		
Dry mouth	28 (13)	9 (4)
Constipation	16 (7)	4 (2)
<b>General Disorders and Administration Site Conditions</b>		
Thirst <sup>a</sup>	35 (16)	11 (5)
Asthenia	19 (9)	9 (4)
Pyrexia	9 (4)	2 (1)
<b>Metabolism and Nutrition Disorders</b>		
Hyperglycemia <sup>b</sup>	14 (6)	2 (1)
Anorexia <sup>c</sup>	8 (4)	2 (1)
<b>Renal and Urinary Disorders</b>		
Pollakiuria or polyuria <sup>d</sup>	25 (11)	7 (3)

The following terms are subsumed under the referenced ADR in Table 1:

<sup>a</sup> polydipsia; <sup>b</sup> diabetes mellitus; <sup>c</sup> decreased appetite; <sup>d</sup> urine output increased, micturition urgency, nocturia

In a subgroup of patients with hyponatremia (N = 475, serum sodium <135 mEq/L) enrolled in a double-blind, placebo-controlled trial (mean duration of treatment was 9 months) of patients with worsening heart failure, the following adverse reactions occurred in tolvaptan-treated patients at a rate at least 2% greater than placebo: mortality (42% tolvaptan, 38% placebo), nausea (21% tolvaptan, 16% placebo), thirst (12% tolvaptan, 2% placebo), dry mouth (7% tolvaptan, 2% placebo) and polyuria or pollakiuria (4% tolvaptan, 1% placebo).

*Gastrointestinal bleeding in patients with cirrhosis*

In patients with cirrhosis treated with tolvaptan in the hyponatremia trials, gastrointestinal bleeding was reported in 6 out of 63 (10%) tolvaptan-treated patients and 1 out of 57 (2%) placebo treated patients.

The following adverse reactions occurred in <2% of hyponatremic patients treated with tolvaptan and at a rate greater than placebo in double-blind placebo-controlled trials (N = 607 tolvaptan; N = 518 placebo) or in <2% of patients in an uncontrolled trial of patients



with hyponatremia (N = 111) and are not mentioned elsewhere in the label.

*Blood and Lymphatic System Disorders:* Disseminated intravascular coagulation

*Cardiac Disorders:* Intracardiac thrombus, ventricular fibrillation

*Investigations:* Prothrombin time prolonged

*Gastrointestinal Disorders:* Ischemic colitis

*Metabolism and Nutrition Disorders:* Diabetic ketoacidosis

*Musculoskeletal and Connective Tissue Disorders:* Rhabdomyolysis

*Nervous System:* Cerebrovascular accident

*Renal and Urinary Disorders:* Urethral hemorrhage

*Reproductive System and Breast Disorders (female):* Vaginal hemorrhage

*Respiratory, Thoracic, and Mediastinal Disorders:* Pulmonary embolism, respiratory failure

*Vascular disorder:* Deep vein thrombosis

## **6.2 Postmarketing Experience**

The following adverse reactions have been identified during post-approval use of tolvaptan. Because these reactions are reported voluntarily from a population of an unknown size, it is not always possible to reliably estimate their frequency or establish a causal relationship to drug exposure.

*Neurologic:* Osmotic demyelination syndrome

*Investigations:* Hybernatriemia

Removal of excess free body water increases serum osmolality and serum sodium concentrations. All patients treated with tolvaptan, especially those whose serum sodium levels become normal, should continue to be monitored to ensure serum sodium remains within normal limits. If hypernatremia is observed, management may include dose decreases or interruption of tolvaptan treatment, combined with modification of free-water intake or infusion. During clinical trials of hyponatremic patients, hypernatremia was reported as an adverse event in 0.7% of patients receiving tolvaptan vs. 0.6% of patients receiving placebo; analysis of laboratory values demonstrated an incidence of hypernatremia of 1.7% in patients receiving tolvaptan vs. 0.8% in patients receiving placebo.

*Immune System Disorders:* Hypersensitivity reactions including anaphylactic shock and rash generalized [see *Contraindications* (4.7)].

## **7 DRUG INTERACTIONS**

### **7.1 CYP3A Inhibitors and Inducers**

#### Strong CYP3A Inhibitors Strong CYP3A Inhibitors

Tolvaptan's AUC was 5.4 times as large and C<sub>max</sub> was 3.5 times as large after co-administration of tolvaptan and 200 mg ketoconazole [see *Warnings and Precautions*

(5.5) and Clinical Pharmacology (12.3)]. Larger doses of the strong CYP3A inhibitor would be expected to produce larger increases in tolvaptan exposure. Concomitant use of tolvaptan with strong CYP3A inhibitors is contraindicated [see Contraindications (4)].

#### Moderate CYP3A Inhibitors

A substantial increase in the exposure to tolvaptan would be expected when tolvaptan is co-administered with moderate CYP3A inhibitors. Avoid co-administration of tolvaptan with moderate CYP3A inhibitors [see Warnings and Precautions (5.5)].

Patients should avoid grapefruit juice beverages while taking tolvaptan [see Clinical Pharmacology (12.3)].

#### Strong CYP3A Inducers

Co-administration of tolvaptan with strong CYP3A inducers reduces exposure to tolvaptan [see Clinical Pharmacology (12.3)]. Avoid concomitant use of tolvaptan with strong CYP3A inducers.

### **7.2 Angiotensin Receptor Blockers, Angiotensin Converting Enzyme Inhibitors and Potassium Sparing Diuretics**

Although specific interaction studies were not performed, in clinical studies tolvaptan was used concomitantly with beta-blockers, angiotensin receptor blockers, angiotensin converting enzyme inhibitors and potassium sparing diuretics. Adverse reactions of hyperkalemia were approximately 1 to 2% higher when tolvaptan was administered with angiotensin receptor blockers, angiotensin converting enzyme inhibitors and potassium sparing diuretics compared to administration of these medications with placebo. Serum potassium levels should be monitored during concomitant drug therapy.

### **7.3 V<sub>2</sub>-Receptor Agonist**

As a V<sub>2</sub>-receptor antagonist, tolvaptan may interfere with the V<sub>2</sub>-agonist activity of desmopressin (dDAVP). Avoid concomitant use of tolvaptan with a V<sub>2</sub>-agonist.

## **8 USE IN SPECIFIC POPULATIONS**

There is no need to adjust dose based on age, gender, race, or cardiac function [see Clinical Pharmacology (12.3)].

### **8.1 Pregnancy**

#### Risk Summary

Available data with tolvaptan use in pregnant women are insufficient to determine if there is a drug-associated risk of adverse developmental outcomes. Tolvaptan did not cause any developmental toxicity in rats or in rabbits at exposures approximately 2.8 and 0.8 times, respectively, the exposure in congestive heart failure (CHF) patients at the maximum recommended human dose (MRHD) of 60 mg once daily. However, effects on embryo-fetal development occurred in both species at doses causing significant maternally toxic doses. In rats, reduced fetal weights and delayed fetal ossification occurred at 11 times the exposure in CHF patients, based on AUC. In rabbits, increased abortions, embryo-fetal death, fetal microphthalmia, open eyelids, cleft palate, brachymelia and skeletal malformations occurred at approximately 1.6 times the

exposure in CHF patients (*see Data*).

The estimated background risk of major birth defects and miscarriage for the indicated population is unknown. All pregnancies have a background risk of birth defect, loss, or other adverse outcomes. The estimated background risk of major birth defects and miscarriage in the U.S. general population is 2 to 4% and 15 to 20% of clinically recognized pregnancies, respectively.

## Data

### Animal Data

Oral administration of tolvaptan during the period of organogenesis in Sprague-Dawley rats produced no evidence of teratogenesis at doses up to 100 mg/kg/day. Delayed ossification was seen at 1000 mg/kg, which is approximately 11 times the exposure in CHF patients at the MRHD of 60 mg ( $AUC_{24h}$  10271 ng\*h/mL). The fetal effects are likely secondary to maternal toxicity (decreased food intake and low body weights). In a prenatal and postnatal study in rats, tolvaptan had no effect on physical development, reflex function, learning ability or reproductive performance at doses up to 1000 mg/kg/day (11 times the exposure in CHF patients at the MRHD of 60 mg).

In rabbits, teratogenicity (microphthalmia, embryo-fetal mortality, cleft palate, brachymelia and skeletal malformations) was observed in rabbits at 1000 mg/kg (approximately 1.6 times the exposure in CHF patients at the MRHD of 60 mg dose). This dose also caused maternal toxicity (lower body weight gains and food consumption).

## **8.2 Lactation**

### Risk Summary

\_There are no data on the presence of tolvaptan or its metabolites in human milk, the effects on the breastfed infant, or the effects on milk production. Tolvaptan is present in rat milk (*see Data*). When a drug is present in animal milk, it is possible that the drug will be present in human milk, but relative levels may vary (*see Data*). Because of the potential for serious adverse reactions, including electrolyte abnormalities (e.g., hypernatremia), hypotension, and volume depletion in breastfed infants, advise women not to breastfeed during treatment with tolvaptan.

### Data

\_In lactating rats administered radiolabeled tolvaptan, lacteal radioactivity concentrations reached the highest level at 8 hours after administration and then decreased gradually with time with a half-life of 27.3 hours. The level of activity in milk ranged from 1.5-to 15.8-fold those in maternal blood over a period of 72 hours post-dose. Increased perinatal death and decreased body weight of the offspring were observed during the lactation period and after weaning at approximately 11 times the exposure in CHF patients at the MRHD of 60 mg.

## **8.4 Pediatric Use**

Safety and effectiveness of tolvaptan in pediatric patients have not been established.

## **8.5 Geriatric Use**

Of the total number of hyponatremic subjects treated with tolvaptan in clinical studies, 42% were 65 years old and over, while 19% were 75 years old and over. No overall differences in safety or effectiveness were observed between these subjects and younger subjects, and other reported clinical experience has not identified differences in responses between the elderly and younger patients, but greater sensitivity of some older individuals cannot be ruled out. Increasing age has no effect on tolvaptan plasma concentrations.

### **8.6 Use in Patients with Hepatic Impairment**

Moderate and severe hepatic impairment do not affect exposure to tolvaptan to a clinically relevant extent. Avoid use of tolvaptan in patients with underlying liver disease.

### **8.7 Use in Patients with Renal Impairment**

No dose adjustment is necessary based on renal function. There are no clinical trial data in patients with CrCl <10 mL/min, and, because drug effects on serum sodium levels are likely lost at very low levels of renal function, use in patients with a CrCl <10 mL/min is not recommended. No benefit can be expected in patients who are anuric [see *Contraindication (4) and Clinical Pharmacology (12.3)*].

## **10 OVERDOSAGE**

Single oral doses up to 480 mg (8 times the maximum recommended daily dose) and multiple doses up to 300 mg once daily for 5 days have been well tolerated in studies in healthy subjects. There is no specific antidote for tolvaptan intoxication. The signs and symptoms of an acute overdose can be anticipated to be those of excessive pharmacologic effect: a rise in serum sodium concentration, polyuria, thirst, and dehydration/hypovolemia.

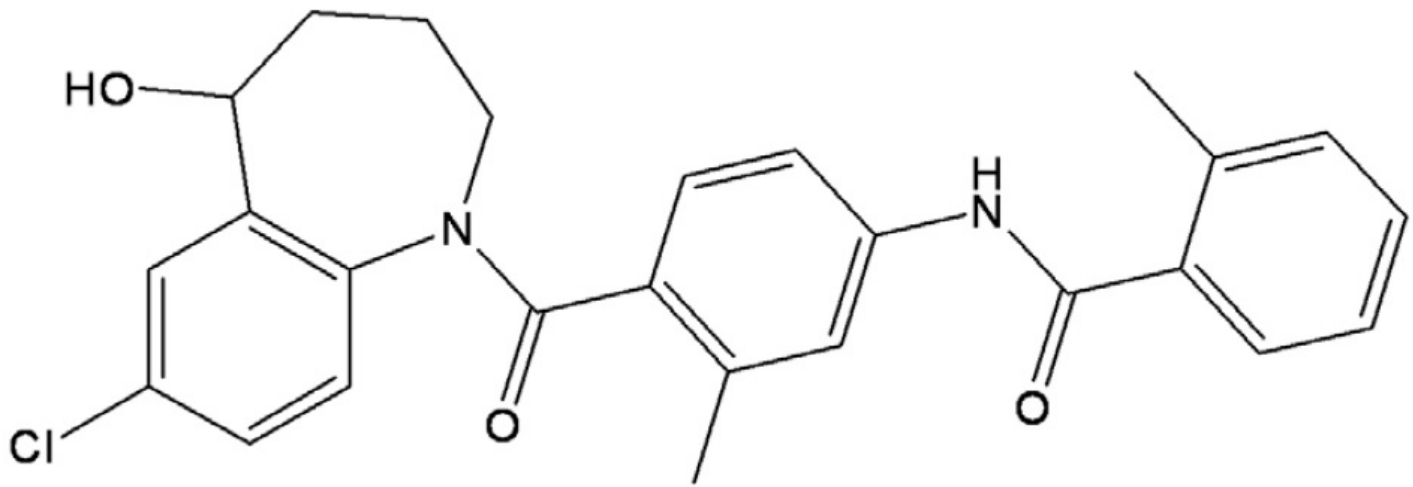
No mortality was observed in rats or dogs following single oral doses of 2000 mg/kg (maximum feasible dose). A single oral dose of 2000 mg/kg was lethal in mice, and symptoms of toxicity in affected mice included decreased locomotor activity, staggering gait, tremor and hypothermia.

In patients with suspected tolvaptan overdosage, assessment of vital signs, electrolyte concentrations, ECG and fluid status are recommended. Continue replacement of water and electrolytes until aquaresis abates.

Dialysis may not be effective in removing tolvaptan because of its high binding affinity for human plasma protein (>98%).

## **11 DESCRIPTION**

Tolvaptan is ( $\pm$ )-4'-[(7-chloro-2,3,4,5-tetrahydro-5-hydroxy-1*H*-1-benzazepin-1-yl) carbonyl]-*o*-tolu-*m*-toluidide. The empirical formula is C<sub>26</sub>H<sub>25</sub>ClN<sub>2</sub>O<sub>3</sub>. Molecular weight is 448.94. The chemical structure is:



Tolvaptan tablets for oral use contain 15 mg or 30 mg of tolvaptan. Inactive ingredients include corn starch, FD&C Blue #2/indigo carmine aluminum lake, hydroxypropyl cellulose, lactose monohydrate, low substituted hydroxypropyl cellulose, magnesium stearate and microcrystalline cellulose.

## 12 CLINICAL PHARMACOLOGY

### 12.1 Mechanism of Action

Tolvaptan is a selective vasopressin  $V_2$ -receptor antagonist with an affinity for the  $V_2$ -receptor that is 1.8 times that of native arginine vasopressin (AVP). Tolvaptan affinity for the  $V_2$ -receptor is 29 times greater than for the  $V_{1a}$ -receptor. When taken orally, 15 to 60 mg doses of tolvaptan antagonize the effect of vasopressin and cause an increase in urine water excretion that results in an increase in free water clearance (aquaresis), a decrease in urine osmolality, and a resulting increase in serum sodium concentrations. Urinary excretion of sodium and potassium and plasma potassium concentrations are not significantly changed. Tolvaptan metabolites have no or weak antagonist activity for human  $V_2$ -receptors compared with tolvaptan.

### 12.2 Pharmacodynamics

In healthy subjects receiving a single dose of tolvaptan 60 mg, the onset of the aquaretic and sodium increasing effects occurs within 2 to 4 hours post-dose. A peak effect of about a 6 mEq increase in serum sodium and about 9 mL/min increase in urine excretion rate is observed between 4 and 8 hours post-dose; thus, the pharmacological activity lags behind the plasma concentrations of tolvaptan. About 60% of the peak effect on serum sodium is sustained at 24 hours post-dose, but the urinary excretion rate is no longer elevated by this time. Doses above 60 mg tolvaptan do not increase aquaresis or serum sodium further. The effects of tolvaptan in the recommended dose range of 15 to 60 mg once daily appear to be limited to aquaresis and the resulting increase in sodium concentration.

Plasma concentrations of native AVP may increase (avg. 2 to 9 pg/mL) with tolvaptan administration.

### Cardiac Electrophysiology

No prolongation of the QT interval was observed with tolvaptan following multiple doses of 300 mg/day for 5 days.

### **12.3 Pharmacokinetics**

In healthy subjects, the pharmacokinetics of tolvaptan after single doses of up to 480 mg and multiple doses up to 300 mg once daily have been examined. In hyponatremia subjects, single and multiple doses up to 60 mg have been studied.

#### Absorption

In healthy subjects, peak concentrations of tolvaptan are observed between 2 and 4 hours post-dose. Peak concentrations increase less than dose proportionally with doses greater than 240 mg.

The absolute bioavailability of tolvaptan decreases with increasing doses. The absolute bioavailability of tolvaptan following an oral dose of 30 mg is 56% (range 42 to 80%).

Co-administration of 90 mg tolvaptan with a high-fat meal (~1000 calories, of which 50% are from fat) doubles peak concentrations but has no effect on the AUC of tolvaptan; tolvaptan may be administered with or without food.

#### Distribution

\_Tolvaptan binds to both albumin and  $\alpha$ 1-acid glycoprotein and the overall protein binding is >98%; binding is not affected by disease state. The volume of distribution of tolvaptan is about 3 L/kg. The pharmacokinetic properties of tolvaptan are stereospecific, with a steady-state ratio of the S-(-) to the R-(+) enantiomer of about 3. When administered as multiple once-daily 300 mg doses to healthy subjects or to patients with congestive heart failure or ADPKD, tolvaptan's accumulation factor is <1.2. There is marked inter-subject variation in peak and average exposure to tolvaptan with a percent coefficient of variation ranging between 30 and 60%.

#### Metabolism and Elimination

\_Tolvaptan is metabolized almost exclusively by CYP3A. Fourteen metabolites have been identified in plasma, urine and feces; all but one were also metabolized by CYP3A and none are pharmacodynamically active. After oral administration of radiolabeled tolvaptan, tolvaptan was a minor component in plasma, representing 3% of total plasma radioactivity; the oxobutyric acid metabolite was present at 52.5% of total plasma radioactivity with all other metabolites present at lower concentrations than tolvaptan. The oxobutyric acid metabolite shows a plasma half-life of ~180 h. About 40% of radioactivity was recovered in urine (<1% as unchanged tolvaptan) and 59% in feces (19% as unchanged tolvaptan). Following intravenous infusion, tolvaptan half-life is approximately 3 hours. Following single oral doses to healthy subjects, the estimated half-life of tolvaptan increases from 3 hours for a 15 mg dose to approximately 12 hours for 120 mg and higher doses due to more prolonged absorption of tolvaptan at higher doses; apparent clearance is approximately 4 mL/min/kg and does not appear to change with increasing dose.

#### Specific Populations

##### Hyponatremia

In patients with hyponatremia of any origin the clearance of tolvaptan is reduced to about 2 mL/min/kg.

## *Hepatic Impairment*

Moderate or severe hepatic impairment or congestive heart failure decrease the clearance and increase the volume of distribution of tolvaptan, but the respective changes are not clinically relevant. Exposure and response to tolvaptan in subjects with creatinine clearance ranging between 79 and 10 mL/min and patients with normal renal function are not different.

## *Renal Impairment*

In a study in patients with creatinine clearances ranging from 10 to 124 mL/min administered a single dose of 60 mg tolvaptan, AUC and  $C_{max}$  of plasma tolvaptan were less than doubled in patients with severe renal impairment (creatinine clearance <30 mL/min) relative to the controls. The peak increase in serum sodium was 5 to 6 mEq/L, regardless of renal function, but the onset and offset of tolvaptan's effect on serum sodium were slower in patients with severe renal impairment [see Use in Specific Populations (8.7)].

## Drug Interaction Studies

### Impact of Other Drugs on Tolvaptan

#### Strong CYP3A Inhibitors

Ketoconazole: Tolvaptan's  $C_{max}$  and AUC were, respectively, 3.5 times and 5.4 times as high following ketoconazole 200 mg given one day prior to and concomitantly with 30 mg tolvaptan [see Contraindications (4), Warnings and Precautions (5.5) and Drug Interactions (7.1)].

#### Moderate CYP3A4 inhibitors

Fluconazole: Fluconazole 400 mg given one day prior and 200 mg given concomitantly produced an 80% and 200% increase in tolvaptan  $C_{max}$  and AUC, respectively.

Grapefruit Juice: Co-administration of grapefruit juice and tolvaptan results in an increase in  $C_{max}$  and AUC of 90% and 60% for tolvaptan, respectively [see Drug Interactions (7.1)].

#### CYP3A4 Inducers

Rifampin: Rifampin 600 mg once daily for 7 days followed by a single 240 mg dose of tolvaptan decreased both tolvaptan  $C_{max}$  and AUC about 85%.

#### Other Drugs

Co-administration of lovastatin, digoxin, furosemide, and hydrochlorothiazide with tolvaptan has no clinically relevant impact on the exposure to tolvaptan.

### Impact of Tolvaptan on Other Drugs

#### CYP3A Substrates

Tolvaptan is a weak inhibitor of CYP3A. Co-administration of lovastatin and tolvaptan increases the exposure to lovastatin and its active metabolite lovastatin- $\beta$  hydroxyacid by factors of 1.4 and 1.3, respectively. This is not a clinically relevant change.

#### P-gp Substrates

Digoxin: Digoxin 0.25 mg was administered once daily for 12 days. Tolvaptan 60 mg,

was co-administered once daily on Days 8 to 12. Digoxin  $C_{max}$  and AUC were increased 30% and 20%, respectively.

### *Transporter Substrates*

Tolvaptan is a substrate of P-gp and an inhibitor of P-gp and BCRP. The oxobutyric acid metabolite of tolvaptan is an inhibitor of OATP1B1 and OAT3. Co-administration of tolvaptan with rosuvastatin (BCRP substrate) did not have a clinically significant effect on rosuvastatin exposure. Rosuvastatin  $C_{max}$  and  $AUC_t$  increased 54% and 69%, respectively. Administration of rosuvastatin (OATP1B1 substrate) or furosemide (OAT3 substrate) to healthy subjects with elevated oxobutyric acid metabolite plasma concentrations did not meaningfully alter the pharmacokinetics of rosuvastatin or furosemide.

### *Other Drugs*

Co-administration of tolvaptan does not appear to alter the pharmacokinetics of warfarin, furosemide, hydrochlorothiazide, or amiodarone (or its active metabolite, desethylamiodarone) to a clinically significant degree.

## **13 NONCLINICAL TOXICOLOGY**

### **13.1 Carcinogenesis, Mutagenesis, Impairment of Fertility**

#### Carcinogenesis

The carcinogenic potential of tolvaptan was assessed in 2-year carcinogenicity studies in mice and rats. Tolvaptan did not increase tumors in male or female rats at doses up to 1000 mg/kg/day (1.24 to 3.26 times the exposure in CHF patients based on AUC at the MRHD of 60 mg), in male mice at doses up to 60 mg/kg/day (0.3 times the exposure in CHF patients at the MRHD) and to female mice at doses up to 100 mg/kg/day (0.4 times the exposure in CHF patients at the MRHD).

#### Mutagenesis

-

Tolvaptan was not clastogenic in the *in vitro* chromosomal aberration test in Chinese hamster lung fibroblast cells or the *in vivo* rat micronucleus assay and was not mutagenic in the *in vitro* bacterial reverse mutation assays.

#### Impairment of fertility

-

In a fertility study in which male and female rats were administered tolvaptan orally at 100, 300 or 1000 mg/kg/day, altered estrous cycles due to prolongation of diestrus were observed in dams given 300 and 1000 mg/kg/day (6.2 and 11 times the exposure in CHF patients at the 60 mg dose). Tolvaptan had no effect on copulation or fertility indices. There were also no effects on the incidences of early or late resorption, dead fetuses, pre- or post-implantation loss, external anomalies, or fetal body weights.

## **14 CLINICAL STUDIES**



## 14.1 Hyponatremia

In two double-blind, placebo-controlled, multi-center studies (SALT-1 and SALT-2), a total of 424 patients with euvolemic or hypervolemic hyponatremia (serum sodium <135 mEq/L) resulting from a variety of underlying causes (heart failure, liver cirrhosis, syndrome of inappropriate antidiuretic hormone [SIADH] and others) were treated for 30 days with tolvaptan or placebo, then followed for an additional 7 days after withdrawal. Symptomatic patients, patients likely to require saline therapy during the course of therapy, patients with acute and transient hyponatremia associated with head trauma or postoperative state and patients with hyponatremia due to primary polydipsia, uncontrolled adrenal insufficiency or uncontrolled hypothyroidism were excluded. Patients were randomized to receive either placebo (N = 220) or tolvaptan (N = 223) at an initial oral dose of 15 mg once daily. The mean serum sodium concentration at study entry was 129 mEq/L. Fluid restriction was to be avoided if possible during the first 24 hours of therapy to avoid overly rapid correction of serum sodium, and during the first 24 hours of therapy 87% of patients had no fluid restriction. Thereafter, patients could resume or initiate fluid restriction (defined as daily fluid intake of  $\leq 1.0$  liter/day) as clinically indicated.

The dose of tolvaptan could be increased at 24 hour intervals to 30 mg once daily, then to 60 mg once daily, until either the maximum dose of 60 mg or normonatremia (serum sodium >135 mEq/L) was reached. Serum sodium concentrations were determined at 8 hours after study drug initiation and daily up to 72 hours, within which time titration was typically completed. Treatment was maintained for 30 days with additional serum sodium assessments on Days 11, 18, 25 and 30. On the day of study discontinuation, all patients resumed previous therapies for hyponatremia and were reevaluated 7 days later. The primary endpoint for these studies was the average daily AUC for change in serum sodium from baseline to Day 4 and baseline to Day 30 in patients with a serum sodium less than 135 mEq/L. Compared to placebo, tolvaptan caused a statistically greater increase in serum sodium ( $p < 0.0001$ ) during both periods in both studies (see Table 2). For patients with a serum sodium of <130 mEq/L or <125 mEq/L, the effects at Day 4 and Day 30 remained significant (see Table 2). This effect was also seen across all disease etiology subsets (e.g., CHF, cirrhosis, SIADH/other).

**Table 2. Effects of Treatment with Tolvaptan 15 mg/day to 60 mg/day**

	<b>Tolvaptan 15 mg/day 60 mg/day</b>	<b>Placebo</b>	<b>Estimated Effect (95% CI)</b>
<b>Subjects with Serum Sodium &lt;135 mEq/L (ITT population)</b>			
Change in average daily serum [Na <sup>+</sup> ] AUC baseline to Day 4 (mEq/L) Mean (SD) N	4.0 (2.8) 213	0.4 (2.4) 203	3.7 (3.3 to 4.2) $p < 0.0001$

Change in average daily serum [Na+] AUC baseline to Day 30 (mEq/L) Mean (SD) N	6.2 (4.0) 213	1.8 (3.7) 203	4.6 (3.9 to 5.2) $p < 0.0001$
Percent of Patients Needing Fluid Restriction*	14% 30/215	25% 51/206	$p = 0.0017$
<b>Subgroup with Serum Sodium &lt;130 mEq/L</b>			
Change in average daily serum [Na+] AUC baseline to Day 4 (mEq/L) Mean (SD) N	4.8 (3.0) 110	0.7 (2.5) 105	4.2 (3.5 to 5.0) $p < 0.0001$
Change in average daily serum [Na+] AUC baseline to Day 30 (mEq/L) Mean (SD) N	7.9 (4.1) 110	2.6 (4.2) 105	5.5 (4.4 to 6.5) $p < 0.0001$
Percent of Patients Needing Fluid Restriction*	19% 21/110	36% 38/106	$p < 0.01$
<b>Subgroup with Serum Sodium &lt;125 mEq/L</b>			
Change in average daily serum [Na+] AUC baseline to Day 4 (mEq/L) Mean (SD) N	5.7 (3.8) 26	1.0 (1.8) 30	5.3 (3.8 to 6.9) $p < 0.0001$
Change in average			

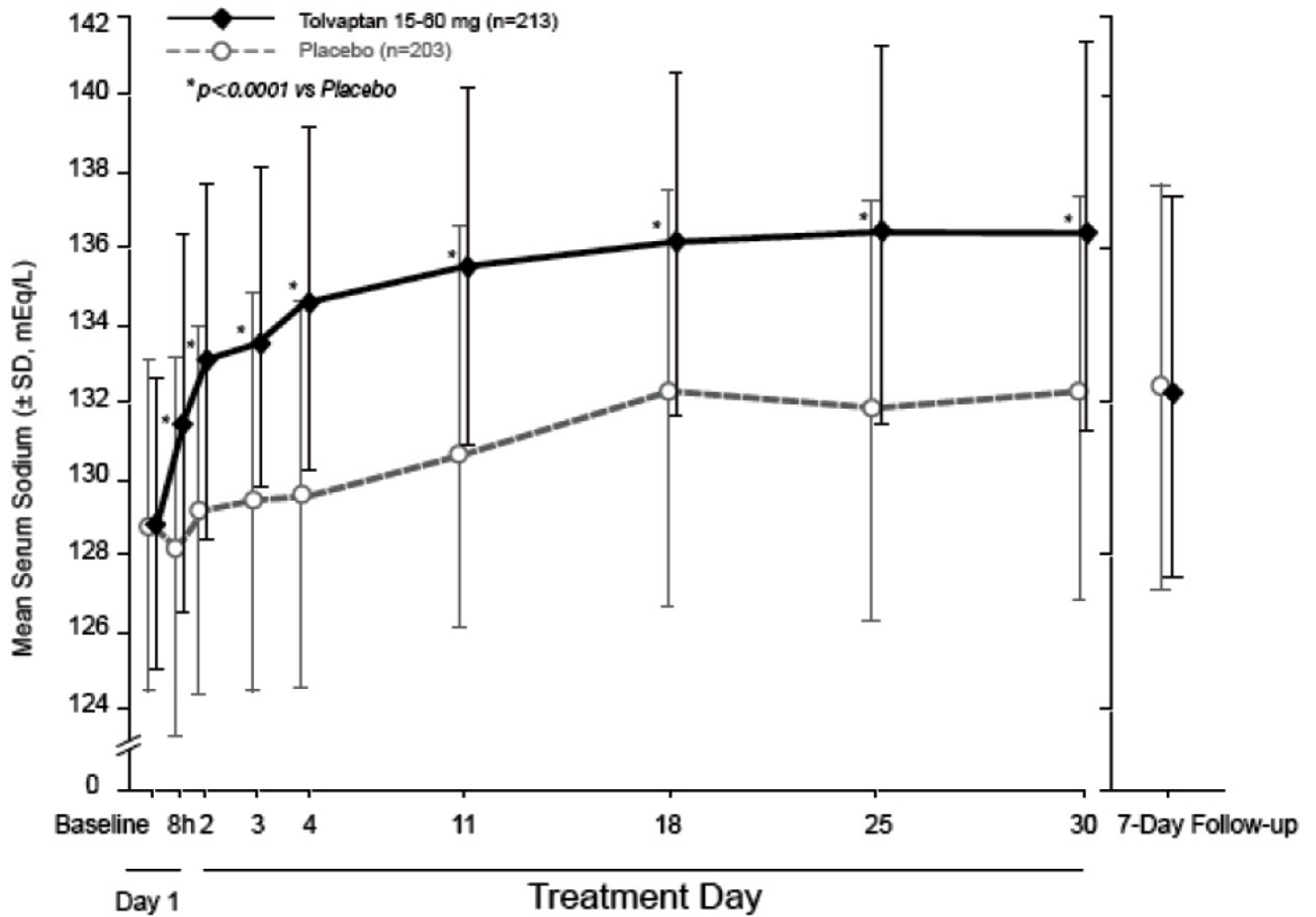
daily serum [Na <sup>+</sup> ] AUC baseline to Day 30 (mEq/L) Mean (SD) N	10.0 (4.8) 26	4.1 (4.5) 30	5.7 (3.1 to 8.3) <i>p</i> < 0.0001
Percent of Patients Needing Fluid Restriction*	35% 9/26	50% 15/30	<i>p</i> = 0.14

\* Fluid Restriction defined as <1L/day at any time during treatment period.

In patients with hyponatremia (defined as <135 mEq/L), serum sodium concentration increased to a significantly greater degree in tolvaptan-treated patients compared to placebo-treated patients as early as 8 hours after the first dose, and the change was maintained for 30 days. The percentage of patients requiring fluid restriction (defined as ≤1 L/day at any time during the treatment period) was also significantly less (*p* = 0.0017) in the tolvaptan-treated group (30/215, 14%) as compared with the placebo-treated group (51/206, 25%).

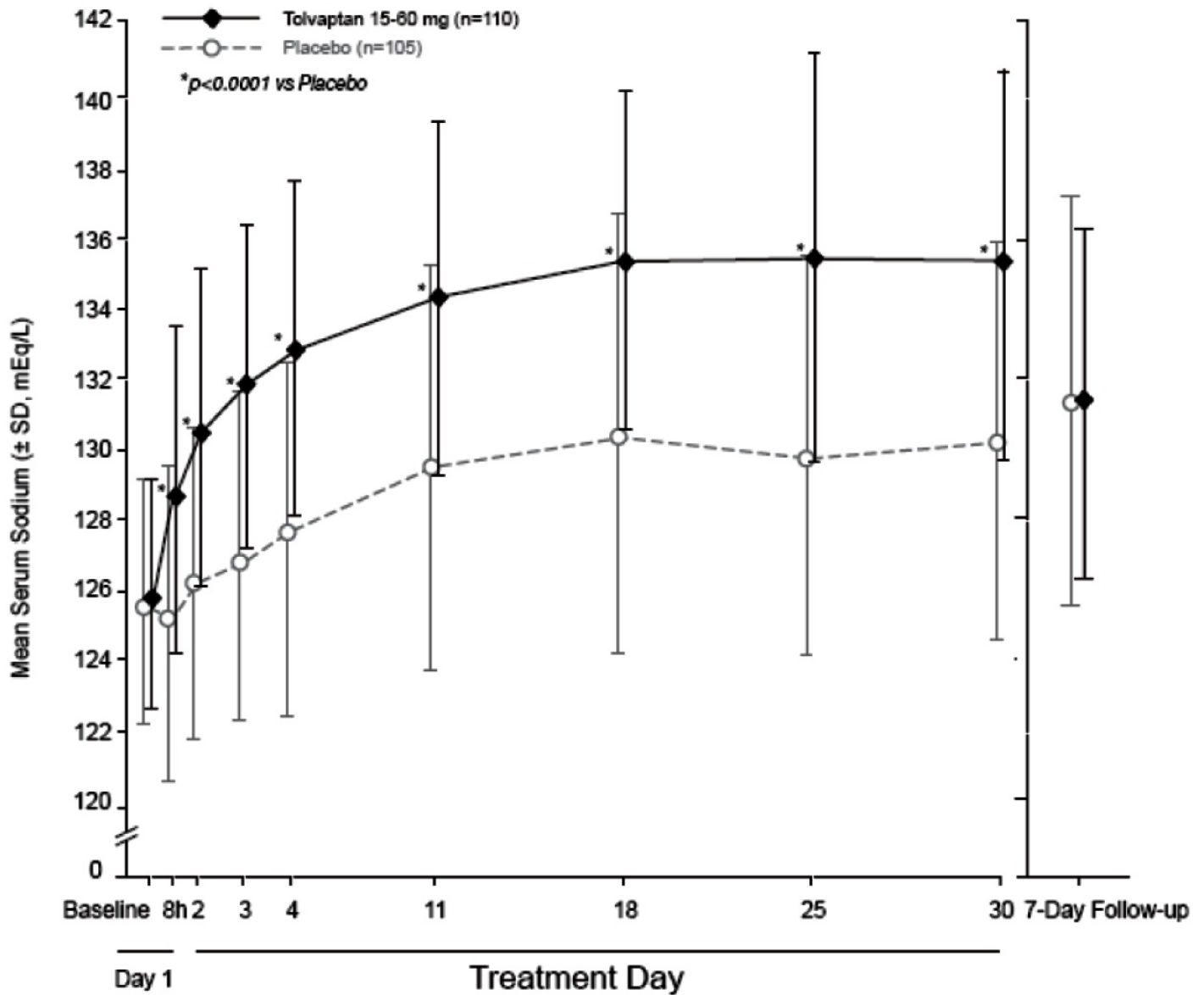
Figure 1 shows the change from baseline in serum sodium by visit in patients with serum sodium <135 mEq/L. Within 7 days of tolvaptan discontinuation, serum sodium concentrations in tolvaptan-treated patients declined to levels similar to those of placebo-treated patients.

**Figure 1: Pooled SALT Studies: Analysis of Mean Serum Sodium (± SD, mEq/L) by Visit - Patients with Baseline Serum Sodium <135 mEq/L**



\* $p$ -value  $< 0.0001$  for all visits during tolvaptan treatment compared to placebo

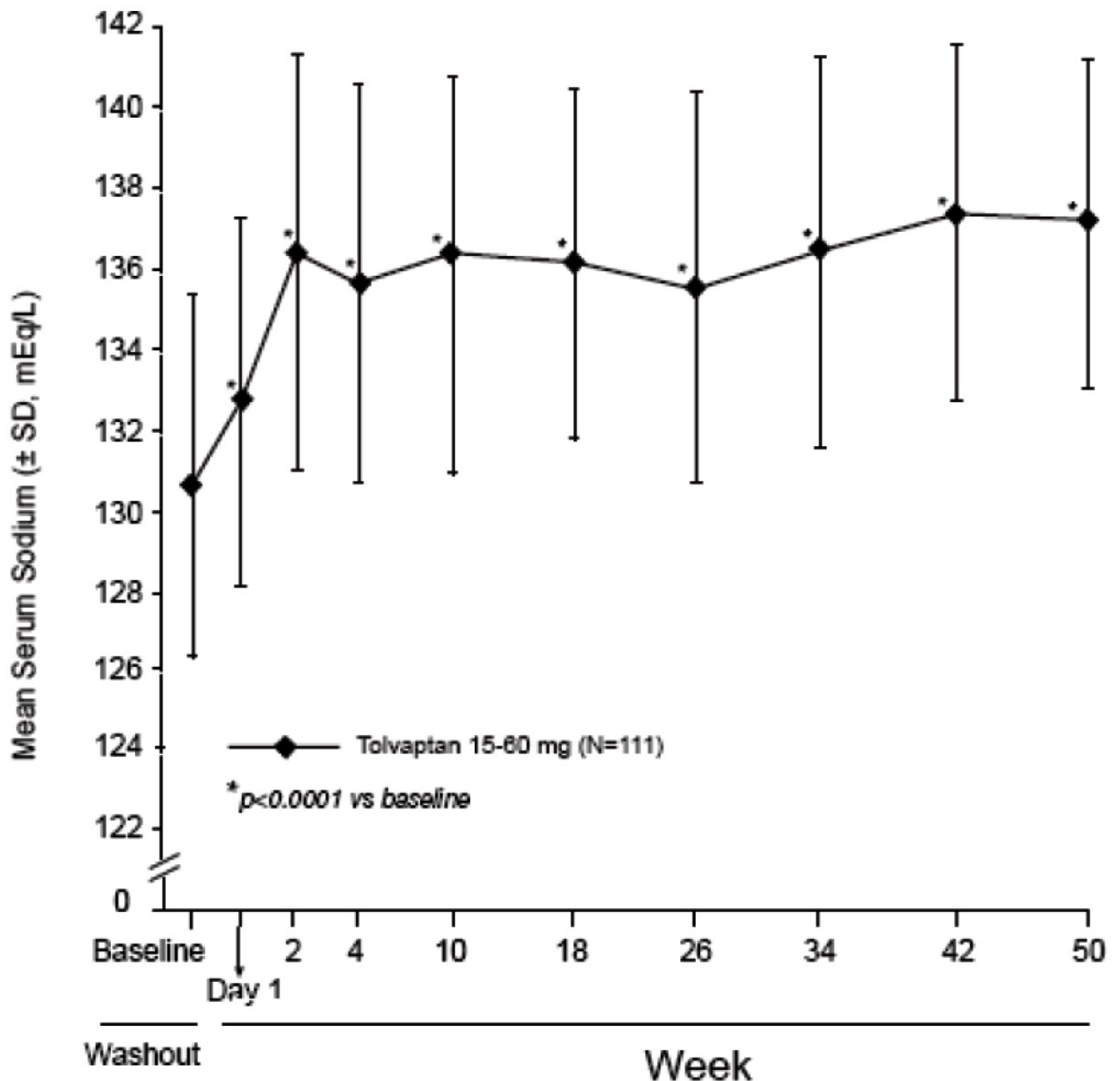
**Figure 2: Pooled SALT Studies: Analysis of Mean Serum Sodium ( $\pm$  SD, mEq/L) by Visit - Patients with Baseline Serum Sodium  $< 130$  mEq/L**



\*p-value <0.0001 for all visits during tolvaptan treatment compared to placebo

In the open-label study SALTWATER, 111 patients, 94 of them hyponatremic (serum sodium <135 mEq/L), previously on tolvaptan or placebo therapy, were given tolvaptan as a titrated regimen (15 to 60 mg once daily) after having returned to standard care for at least 7 days. By this time, their baseline mean serum sodium concentration had fallen to between their original baseline and post-placebo therapy level. Upon initiation of therapy, average serum sodium concentrations increased to approximately the same levels as observed for those previously treated with tolvaptan and were sustained for at least a year. Figure 3 shows results from 111 patients enrolled in the SALTWATER Study.

**Figure 3: SALTWATER: Analysis of Mean Serum Sodium (± SD, mEq/L) by Visit**



\*p-value <0.0001 for all visits during tolvaptan treatment compared to baseline

## 14.2 Heart Failure

In a phase 3 double-blind, placebo-controlled study (EVEREST), 4133 patients with worsening heart failure were randomized to tolvaptan or placebo as an adjunct to standard of care. Long-term tolvaptan treatment (mean duration of treatment of 0.75 years) had no demonstrated effect, either favorable or unfavorable, on all-cause mortality [HR (95% CI): 0.98 (0.9, 1.1)] or the combined endpoint of CV mortality or subsequent hospitalization for worsening HF [HR (95% CI): 1.0 (0.9, 1.1)].

## 16 HOW SUPPLIED/STORAGE AND HANDLING

### How Supplied

Tolvaptan tablets are available in the following strengths and packages.

Tolvaptan 15 mg tablets are blue colored, triangular, shallow convex tablets debossed with “E” on one side and “500” on the other side.

Blister of 10 tablets      NDC 49884-768-52

Carton of 1 blister      NDC 49884-768-54

Tolvaptan 30 mg tablets are blue colored, circular, shallow convex tablets debossed with “E” on one side and “501” on the other side.

Blister of 10 tablets      NDC 49884-770-52

Carton of 1 blister      NDC 49884-770-54

### **Storage and Handling**

Store at 20° to 25°C (68° to 77°F); excursions permitted to 15° to 30°C (59° to 86°F) [see USP Controlled Room Temperature].

Keep out of reach of children.

## **17 PATIENT COUNSELING INFORMATION**

As a part of patient counseling, healthcare providers must review the tolvaptan tablets Medication Guide with every patient [see *FDA-Approved Medication Guide*].

### **Pregnancy**

Advise pregnant women of the potential risk to a fetus. Advise females of reproductive potential to inform their prescriber of a known or suspected pregnancy [see *Use in Specific Populations (8.1)*].

### **Lactation**

Advise patients not to breastfeed an infant if they are taking tolvaptan [see *Use in Specific Populations (8.2)*].

## **MEDICATION GUIDE**

### **MEDICATION GUIDE**

#### **Tolvaptan Tablets**

#### **(tol VAP tan)**

Read the Medication Guide that comes with tolvaptan tablets before you take it and each time you get a new prescription. There may be new information. This Medication Guide does not take the place of talking to your healthcare provider about your medical condition or your treatment. Share this important information with members of your household.

#### **What is the most important information I should know about tolvaptan tablets?**

1. **Tolvaptan tablets may make the salt (sodium) level in your blood rise too fast.** This can increase your risk of a serious condition called osmotic demyelination syndrome (ODS). ODS can lead to coma or death. ODS can also cause new symptoms such as:

- trouble speaking
- swallowing trouble or feeling like food or liquid gets stuck while swallowing
- drowsiness
- confusion
- mood changes
- trouble controlling body movement (involuntary movement) and weakness in muscles of the arms and legs
- seizures

You or a family member should tell your healthcare provider right away if you have any of these symptoms even if they begin later in treatment. Also tell you healthcare provider about any other new symptoms while taking tolvaptan tablets.

You may be more at risk for ODS if you have:

- liver disease
- not eaten enough for a long period of time (malnourished)
- very low sodium level in your blood
- been drinking large amounts of alcohol for a long period of time (chronic alcoholism)

To lessen your risk of ODS while taking tolvaptan tablets:

- **Treatment with tolvaptan tablets should be started and re-started only in a hospital, where the sodium levels in your blood can be checked closely.**
- Do not take tolvaptan tablets if you cannot tell if you are thirsty.
- To prevent losing too much body water (dehydration), have water available to drink at all times while taking tolvaptan tablets. Unless your healthcare provider tells you otherwise, drink when you are thirsty.
- If your healthcare provider tells you to keep taking tolvaptan tablets after you leave a hospital, it is important that you do not stop and re-start tolvaptan tablets on your own. You may need to go back to a hospital to re-start tolvaptan tablets. Talk to your healthcare provider right away if you stop taking tolvaptan tablets for any reason.
- It is important to stay under the care of your healthcare provider while taking tolvaptan tablets and follow their instructions.

2) **Tolvaptan tablets may cause liver problems, including life-threatening liver failure.** Tolvaptan tablets should not be taken for more than 30 days. Tell your doctor right away if you develop or have worsening of any of these signs and symptoms of liver problems:

- Loss of appetite, nausea, vomiting
- Fever, feeling unwell, unusual tiredness
- Itching
- Yellowing of the skin or the whites of the eyes (jaundice)
- Unusual darkening of the urine



- Right upper stomach area pain or discomfort

**3) If you have autosomal dominant polycystic kidney disease (ADPKD), do not use tolvaptan tablets because you should receive the medicine (tolvaptan) through a program that ensures laboratory monitoring of your liver.**

### **What are tolvaptan tablets?**

Tolvaptan tablets are a prescription medicine used to help increase low sodium levels in the blood, in adults with conditions such as heart failure, and certain hormone imbalances. Tolvaptan tablets help raise salt levels in your blood by removing extra body water as urine.

It is not known if tolvaptan tablets are safe or works in children.

### **Who should not take tolvaptan tablets?**

Do not take tolvaptan tablets if:

- you are allergic to tolvaptan or any of the ingredients in tolvaptan tablets. See the end of this Medication Guide for a complete list of ingredients in tolvaptan tablets.
- the sodium level in your blood must be increased right away.
- you cannot replace fluids by drinking or you cannot feel if you are thirsty.
- you are dizzy, faint, or your kidneys are not working normally because you have lost too much body fluid.
- you take certain medicines. These medicines could cause you to have too much tolvaptan tablets in your blood:
  - the antibiotic medicines, clarithromycin (Biaxin, Biaxin XL) or telithromycin (Ketek)
  - the antifungal medicines, ketoconazole (Nizoral) or itraconazole (Sporonox)
  - the anti-HIV medicines, ritonavir (Kaletra, Norvir), indinavir (Crixivan), nelfinavir (Viracept), and saquinavir (Invirase)
  - the antidepressant medicine, nefazodone hydrochloride
- your body is not able to make urine. Tolvaptan tablets will not help your condition.

### **What should I tell my healthcare provider before taking tolvaptan tablets?**

Tell your healthcare provider about all your medical conditions, including if you:

- have kidney problems and your body cannot make urine.
- have liver problems
- cannot feel if you are thirsty. See **“What is the most important information I should know about tolvaptan tablets?”**
- had an allergic reaction in the past to tolvaptan or to any of the other ingredients of this medicine. See the end of this Medication Guide for a list of the ingredients in tolvaptan tablets.
- are pregnant or plan to become pregnant. It is not known if tolvaptan tablets will harm your unborn baby.
- are breast-feeding. It is not known if tolvaptan passes into your breast milk. You and your healthcare provider should decide if you will take tolvaptan tablets or breast-feed. You should not do both.
- are taking desmopressin (dDAVP).

**Tell your healthcare provider about all the medicines you take, including**

prescription and non-prescription medicines, vitamins, and herbal supplements.

Using tolvaptan tablets with certain medicines could cause you to have too much tolvaptan tablets in your blood. See **“Who should not take tolvaptan tablets?”**

Tolvaptan tablets may affect the way other medicines work, and other medicines may affect how tolvaptan tablets works.

Know the medicines you take. Keep a list of them and show it to your healthcare provider and pharmacist when you get a new medicine.

### **How should I take tolvaptan tablets?**

- See **“What is the most important information I should know about tolvaptan tablets?”**
- Take tolvaptan tablets exactly as prescribed by your healthcare provider.
- Take tolvaptan tablets one time each day.
- You can take tolvaptan tablets with or without food.
- Do not drink grapefruit juice during treatment with tolvaptan tablets. This could cause you to have too much tolvaptan in your blood.
- Certain medicines or illnesses may keep you from drinking fluids or may cause you to lose too much body fluid, such as vomiting or diarrhea. If you have these problems, call your healthcare provider right away.
- Do not miss or skip doses of tolvaptan tablets. If you miss a dose, take it as soon as you remember. If it is near the time of the next dose, skip the missed dose. Just take the next dose at your regular time. Do not take 2 doses at the same time.
- **If you take too much tolvaptan, call your healthcare provider right away.** If you take an overdose of tolvaptan tablets, you may need to go to a hospital.
- If your healthcare provider tells you to stop taking tolvaptan tablets, follow their instructions about limiting the amount of fluid you should drink.

### **What are the possible side effects of tolvaptan tablets?**

#### **Tolvaptan tablets can cause serious side effects including:**

- See **“What is the most important information I should know about tolvaptan tablets?”**
- **Loss of too much body fluid (dehydration).** Tell your healthcare provider if you:
  - have vomiting or diarrhea, and cannot drink normally.
  - feel dizzy or faint. These may be symptoms that you have lost too much body fluid. Call your healthcare provider right away, if you have any of these symptoms.The most common side effects of tolvaptan tablets are:
  - thirst
  - dry mouth
  - weakness
  - constipation
  - making large amounts of urine and urinating often
  - increased blood sugar levels

These are not all the possible side effects of tolvaptan tablets. Talk to your healthcare provider about any side effect that bothers you or that does not go away while taking tolvaptan tablets.

Call your doctor for medical advice about side effects. You may report side effects to FDA at 1-800-FDA-1088.

### **How should I store tolvaptan tablets?**

Store tolvaptan tablets between 59° to 86°F (15° to 30°C).

**Keep tolvaptan tablets and all medicines out of the reach of children.**

### **General Information about tolvaptan tablets**

Medicines are sometimes prescribed for purposes other than those listed in a Medication Guide. Do not use tolvaptan tablets for a condition for which it was not prescribed. Do not give tolvaptan tablets to other people, even if they have the same symptoms you have. They may harm them.

This Medication Guide summarizes the most important information about tolvaptan tablets. If you would like more information, talk with your healthcare provider. You can ask your healthcare provider or pharmacist for information about tolvaptan tablets that is written for healthcare professionals. For more information about tolvaptan tablets, call Par Pharmaceutical at 1-800-828-9393 or go to [www.parpharm.com](http://www.parpharm.com).

### **What are the ingredients in tolvaptan tablets?**

Active ingredient: tolvaptan.

Inactive ingredients: corn starch, FD&C Blue #2/indigo carmine aluminum lake, hydroxypropyl cellulose, lactose monohydrate, low substituted hydroxypropyl cellulose, magnesium stearate and microcrystalline cellulose.

This Medication Guide has been approved by the U.S. Food and Drug Administration.

The brands listed are trademarks of their respective owners and are not trademarks of Par Pharmaceutical. The makers of these brands are not affiliated with and do not endorse Par Pharmaceutical or its products.

Dist. by:

#### **Par Pharmaceutical**

Chestnut Ridge, NY 10977 U.S.A.

Mfg. by:

#### **Par Formulations Private Limited,**

9/215, Pudupakkam, Kelambakkam-603 103.

Made in India

Mfg. Lic. No.: TN00002121

OS768-01-74-01

Issued: 05/2021

### **PACKAGE LABEL.PRINCIPAL DISPLAY PANEL**

#### **Tolvaptan Tablets, 15 mg - Blister Pack Label**

---

NDC 49884-768-52

# Tolvaptan Tablet

15 mg

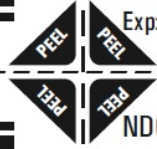
Dist. by:  
**Par Pharmaceutical**  
Chestnut Ridge, NY 10977 U.S.A.  
Made in India  
Mfg. Lic. No.: TN00002121

Lot:   
Exp:

109/17  
BL768-52-74-01



N(01)10349884768522



NDC 49884-768-52

# Tolvaptan Tablet

15 mg

Dist. by:  
**Par Pharmaceutical**  
Chestnut Ridge, NY 10977 U.S.A.  
Made in India  
Mfg. Lic. No.: TN00002121

Lot:   
Exp:

109/17  
BL768-52-74-01



N(01)10349884768522

NDC 49884-768-52

# Tolvaptan Tablet

15 mg

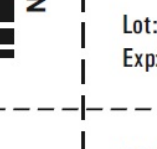
Dist. by:  
**Par Pharmaceutical**  
Chestnut Ridge, NY 10977 U.S.A.  
Made in India  
Mfg. Lic. No.: TN00002121

Lot:   
Exp:

109/17  
BL768-52-74-01



N(01)10349884768522



NDC 49884-768-52

# Tolvaptan Tablet

15 mg

Dist. by:  
**Par Pharmaceutical**  
Chestnut Ridge, NY 10977 U.S.A.  
Made in India  
Mfg. Lic. No.: TN00002121

Lot:   
Exp:

109/17  
BL768-52-74-01



N(01)10349884768522

NDC 49884-768-52

# Tolvaptan Tablet

15 mg

Dist. by:  
**Par Pharmaceutical**  
Chestnut Ridge, NY 10977 U.S.A.  
Made in India  
Mfg. Lic. No.: TN00002121

Lot:   
Exp:

109/17  
BL768-52-74-01



N(01)10349884768522



NDC 49884-768-52

# Tolvaptan Tablet

15 mg

Dist. by:  
**Par Pharmaceutical**  
Chestnut Ridge, NY 10977 U.S.A.  
Made in India  
Mfg. Lic. No.: TN00002121

Lot:   
Exp:

109/17  
BL768-52-74-01



N(01)10349884768522

NDC 49884-768-52

# Tolvaptan Tablet

15 mg

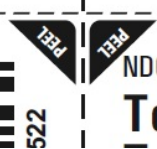
Dist. by:  
**Par Pharmaceutical**  
Chestnut Ridge, NY 10977 U.S.A.  
Made in India  
Mfg. Lic. No.: TN00002121

Lot:   
Exp:

109/17  
BL768-52-74-01



N(01)10349884768522



NDC 49884-768-52

# Tolvaptan Tablet

15 mg

Dist. by:  
**Par Pharmaceutical**  
Chestnut Ridge, NY 10977 U.S.A.  
Made in India  
Mfg. Lic. No.: TN00002121

Lot:   
Exp:

109/17  
BL768-52-74-01



N(01)10349884768522

NDC 49884-768-52

# Tolvaptan

15 mg



522

NDC 49884-768-52

# Tolvaptan

15 mg



522

# Tablet

Dist. by:  
**Par Pharmaceutical**  
Chestnut Ridge, NY 10977 U.S.A.  
Made in India  
Mfg. Lic. No.: TN00002121

Lot:   
Exp:

109/17  
BL768-52-74-01



# Tablet

Dist. by:  
**Par Pharmaceutical**  
Chestnut Ridge, NY 10977 U.S.A.  
Made in India  
Mfg. Lic. No.: TN00002121

Lot:   
Exp:

109/17  
BL768-52-74-01



## Tolvaptan Tablets, 15 mg - Blister Carton Label



**Tolvaptan Tablets, 30 mg - Blister Pack Label**

NDC 49884-770-52

**Tolvaptan  
Tablet**

**30 mg**

Dist. by:  
**Par Pharmaceutical**  
Chestnut Ridge, NY 10977 U.S.A.  
Made in India  
Mfg. Lic. No.: TN00002121

Lot:   
Exp:

109/17  
BL770-52-74-01



N(01)10349884770525



NDC 49884-770-52

**Tolvaptan  
Tablet**

**30 mg**

Dist. by:  
**Par Pharmaceutical**  
Chestnut Ridge, NY 10977 U.S.A.  
Made in India  
Mfg. Lic. No.: TN00002121

Lot:   
Exp:

109/17  
BL770-52-74-01



N(01)10349884770525

NDC 49884-770-52

**Tolvaptan  
Tablet**

**30 mg**

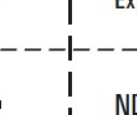
Dist. by:  
**Par Pharmaceutical**  
Chestnut Ridge, NY 10977 U.S.A.  
Made in India  
Mfg. Lic. No.: TN00002121

Lot:   
Exp:

109/17  
BL770-52-74-01



N(01)10349884770525



NDC 49884-770-52

**Tolvaptan  
Tablet**

**30 mg**

Dist. by:  
**Par Pharmaceutical**  
Chestnut Ridge, NY 10977 U.S.A.  
Made in India  
Mfg. Lic. No.: TN00002121

Lot:   
Exp:

109/17  
BL770-52-74-01



N(01)10349884770525

NDC 49884-770-52

**Tolvaptan  
Tablet**

**30 mg**

Dist. by:  
**Par Pharmaceutical**  
Chestnut Ridge, NY 10977 U.S.A.  
Made in India  
Mfg. Lic. No.: TN00002121

Lot:   
Exp:

109/17  
BL770-52-74-01



N(01)10349884770525



NDC 49884-770-52

**Tolvaptan  
Tablet**

**30 mg**

Dist. by:  
**Par Pharmaceutical**  
Chestnut Ridge, NY 10977 U.S.A.  
Made in India  
Mfg. Lic. No.: TN00002121

Lot:   
Exp:

109/17  
BL770-52-74-01



N(01)10349884770525

NDC 49884-770-52

**Tolvaptan  
Tablet**

**30 mg**

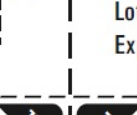
Dist. by:  
**Par Pharmaceutical**  
Chestnut Ridge, NY 10977 U.S.A.  
Made in India  
Mfg. Lic. No.: TN00002121

Lot:   
Exp:

109/17  
BL770-52-74-01



N(01)10349884770525



NDC 49884-770-52

**Tolvaptan  
Tablet**

**30 mg**

Dist. by:  
**Par Pharmaceutical**  
Chestnut Ridge, NY 10977 U.S.A.  
Made in India  
Mfg. Lic. No.: TN00002121

Lot:   
Exp:

109/17  
BL770-52-74-01



N(01)10349884770525

NDC 49884-770-52

**Tolvaptan  
Tablet**

**30 mg**

Dist. by:  
**Par Pharmaceutical**  
Chestnut Ridge, NY 10977 U.S.A.  
Made in India  
Mfg. Lic. No.: TN00002121

Lot:   
Exp:

109/17  
BL770-52-74-01



N(01)10349884770525

NDC 49884-770-52

**Tolvaptan  
Tablet**

**30 mg**

Dist. by:  
**Par Pharmaceutical**  
Chestnut Ridge, NY 10977 U.S.A.  
Made in India  
Mfg. Lic. No.: TN00002121

Lot:   
Exp:

109/17  
BL770-52-74-01



N(01)10349884770525

**Tolvaptan Tablets, 30 mg - Blister Carton Label**



**TOLVAPTAN**

tolvaptan tablet

**Product Information**

<b>Product Type</b>	HUMAN PRESCRIPTION DRUG	<b>Item Code (Source)</b>	NDC:49884-768
<b>Route of Administration</b>	ORAL		

**Active Ingredient/Active Moiety**



Ingredient Name		Basis of Strength	Strength	
TOLVAPTAN (UNII: 21G72T1950) (TOLVAPTAN - UNII:21G72T1950)		TOLVAPTAN	15 mg	
<b>Inactive Ingredients</b>				
Ingredient Name			Strength	
STARCH, CORN (UNII: O8232NY3SJ)				
FD&C BLUE NO. 2 (UNII: L06K8R7DQK)				
HYDROXYPROPYL CELLULOSE, UNSPECIFIED (UNII: 9XZ8H6N6OH)				
LACTOSE MONOHYDRATE (UNII: EWQ57Q8I5X)				
HYDROXYPROPYL CELLULOSE, LOW SUBSTITUTED (UNII: 2165RE0K14)				
MAGNESIUM STEARATE (UNII: 70097M6I30)				
MICROCRYSTALLINE CELLULOSE (UNII: OP1R32D61U)				
<b>Product Characteristics</b>				
Color	blue	Score	no score	
Shape	TRIANGLE (triangular, shallow convex)	Size	7mm	
Flavor		Imprint Code	E;500	
Contains				
<b>Packaging</b>				
#	Item Code	Package Description	Marketing Start Date	Marketing End Date
1	NDC:49884-768-54	1 in 1 CARTON	03/10/2022	
1	NDC:49884-768-52	10 in 1 BLISTER PACK; Type 0: Not a Combination Product		
<b>Marketing Information</b>				
Marketing Category	Application Number or Monograph Citation	Marketing Start Date	Marketing End Date	
ANDA	ANDA206119	03/10/2022		

## TOLVAPTAN

tolvaptan tablet

Product Information			
Product Type	HUMAN PRESCRIPTION DRUG	Item Code (Source)	NDC:49884-770
Route of Administration	ORAL		
Active Ingredient/Active Moiety			
Ingredient Name		Basis of Strength	Strength

<b>TOLVAPTAN</b> (UNII: 21G72T1950) (TOLVAPTAN - UNII:21G72T1950)	TOLVAPTAN	30 mg
---	-----------	-------

### Inactive Ingredients

Ingredient Name	Strength
<b>STARCH, CORN</b> (UNII: O8232NY3SJ)	
<b>FD&amp;C BLUE NO. 2</b> (UNII: L06K8R7DQK)	
<b>HYDROXYPROPYL CELLULOSE, UNSPECIFIED</b> (UNII: 9XZ8H6N6OH)	
<b>LACTOSE MONOHYDRATE</b> (UNII: EWQ57Q8I5X)	
<b>HYDROXYPROPYL CELLULOSE, LOW SUBSTITUTED</b> (UNII: 2165RE0K14)	
<b>MAGNESIUM STEARATE</b> (UNII: 70097M6I30)	
<b>MICROCRYSTALLINE CELLULOSE</b> (UNII: OP1R32D61U)	

### Product Characteristics

<b>Color</b>	blue	<b>Score</b>	no score
<b>Shape</b>	ROUND (circular, shallow convex)	<b>Size</b>	8mm
<b>Flavor</b>		<b>Imprint Code</b>	E;501
<b>Contains</b>			

### Packaging

#	Item Code	Package Description	Marketing Start Date	Marketing End Date
1	NDC:49884-770-54	1 in 1 CARTON	03/10/2022	
1	NDC:49884-770-52	10 in 1 BLISTER PACK; Type 0: Not a Combination Product		

### Marketing Information

Marketing Category	Application Number or Monograph Citation	Marketing Start Date	Marketing End Date
ANDA	ANDA206119	03/10/2022	

**Labeler** - Par Pharmaceutical, Inc. (092733690)

Revised: 3/2022

Par Pharmaceutical, Inc.