

MITOMYCIN- mitomycin injection, powder, lyophilized, for solution
Hikma Pharmaceuticals USA Inc.

MITOMYCIN FOR INJECTION, USP

Rx only

WARNINGS

Mitomycin should be administered under the supervision of a qualified physician experienced in the use of cancer chemotherapeutic agents. Appropriate management of therapy and complications is possible only when adequate diagnostic and treatment facilities are readily available.

Bone marrow suppression, notably thrombocytopenia and leukopenia, which may contribute to overwhelming infections in an already compromised patient, is the most common and severe of the toxic effects of mitomycin (see "WARNINGS" and "ADVERSE REACTIONS" Sections).

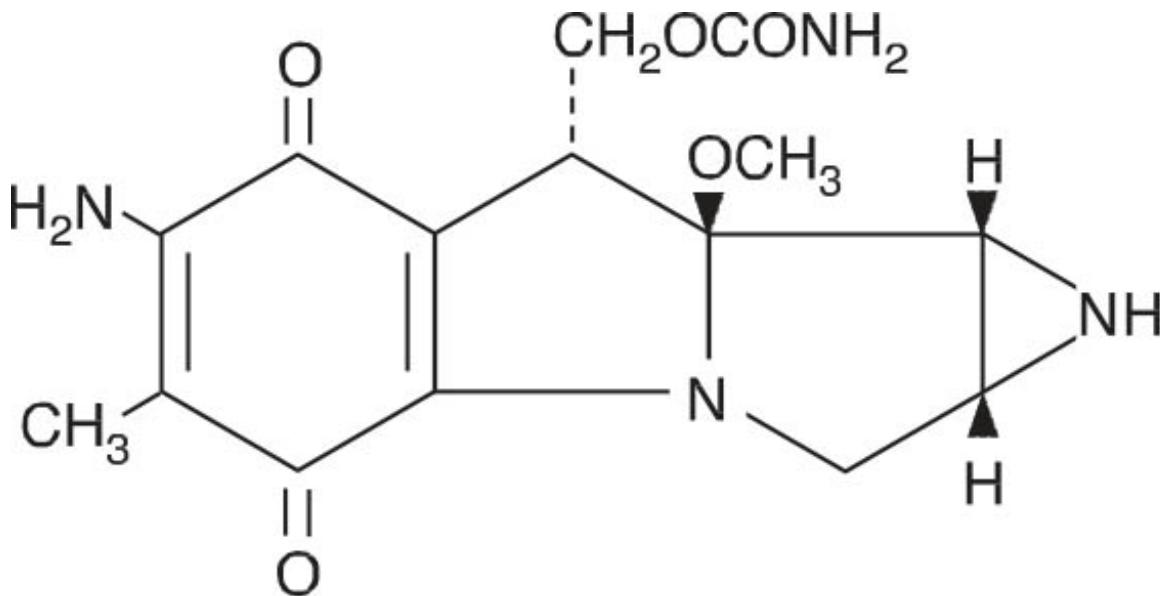
Hemolytic Uremic Syndrome (HUS) a serious complication of chemotherapy, consisting primarily of microangiopathic hemolytic anemia, thrombocytopenia, and irreversible renal failure, has been reported in patients receiving systemic mitomycin. The syndrome may occur at any time during systemic therapy with mitomycin as a single agent or in combination with other cytotoxic drugs; however, most cases occur at doses ≥ 60 mg of mitomycin. Blood product transfusion may exacerbate the symptoms associated with this syndrome.

The incidence of the syndrome has not been defined.

DESCRIPTION

Mitomycin (also known as mitomycin-C) is an antibiotic isolated from the broth of *Streptomyces caespitosus* which has been shown to have antitumor activity. The compound is heat stable, has a high melting point, and is freely soluble in organic solvents.

Mitomycin for Injection, USP is a sterile dry mixture of mitomycin and mannitol, which, when reconstituted with Sterile Water for Injection, provides a solution for intravenous administration. Each vial contains either mitomycin 20 mg and mannitol 40 mg or mitomycin 40 mg and mannitol 80 mg.



Mitomycin Structural Formula

$C_{15}H_{18}N_4O_5$
= 334.33

M.W.

CLINICAL PHARMACOLOGY

Mitomycin selectively inhibits the synthesis of deoxyribonucleic acid (DNA). The guanine and cytosine content correlates with the degree of mitomycin-induced cross-linking. At high concentrations of the drug, cellular RNA and protein synthesis are also suppressed.

In humans, mitomycin is rapidly cleared from the serum after intravenous administration. Time required to reduce the serum concentration by 50% after a 30 mg bolus injection is 17 minutes. After injection of 30 mg, 20 mg, or 10 mg IV, the maximal serum concentrations were 2.4 mcg/mL,

1.7 mcg/mL, and 0.52 mcg/mL, respectively. Clearance is affected primarily by metabolism in the liver, but metabolism occurs in other tissues as well. The rate of clearance is inversely proportional to the maximal serum concentration because, it is thought, of saturation of the degradative pathways.

Approximately 10% of a dose of mitomycin is excreted unchanged in the urine. Since metabolic pathways are saturated at relatively low doses, the percent of a dose excreted in urine increases with increasing dose. In children, excretion of intravenously administered mitomycin is similar.

Animal Toxicology

Mitomycin has been found to be carcinogenic in rats and mice. At doses approximating the recommended clinical dose in man, it produces a greater than 100% increase in tumor incidence in male Sprague-Dawley rats, and a greater than 50% increase in tumor incidence in female Swiss mice.

INDICATIONS AND USAGE

Mitomycin for Injection, USP is not recommended as single-agent, primary therapy. It has been shown to be useful in the therapy of disseminated adenocarcinoma of the stomach or pancreas in proven combinations with other approved chemotherapeutic agents and as palliative treatment when other modalities have failed. Mitomycin is not recommended to replace appropriate surgery and/or radiotherapy.

CONTRAINDICATIONS

Mitomycin is contraindicated in patients who have demonstrated a hypersensitive or idiosyncratic reaction to it in the past.

Mitomycin is contraindicated in patients with thrombocytopenia, coagulation disorder, or an increase in bleeding tendency due to other causes.

WARNINGS

Patients being treated with mitomycin must be observed carefully and frequently during and after therapy.

The use of mitomycin results in a high incidence of bone marrow suppression, particularly thrombocytopenia and leukopenia. Therefore, the following studies should be obtained repeatedly during therapy and for at least 8 weeks following therapy: platelet count, white blood cell count, differential, and hemoglobin. The occurrence of a platelet count below $100,000/\text{mm}^3$ or a WBC below $4,000/\text{mm}^3$ or a progressive decline in either is an indication to withhold further therapy until blood counts have recovered above these levels.

Patients should be advised of the potential toxicity of this drug, particularly bone marrow suppression. Deaths have been reported due to septicemia as a result of leukopenia due to the drug.

Patients receiving mitomycin should be observed for evidence of renal toxicity. Mitomycin should not be given to patients with a serum creatinine greater than 1.7 mg percent.

Usage in Pregnancy

Safe use of mitomycin in pregnant women has not been established. Teratological changes have been noted in animal studies. The effect of mitomycin on fertility is unknown.

PRECAUTIONS

Acute shortness of breath and severe bronchospasm have been reported following the administration of vinca alkaloids in patients who had previously or simultaneously received mitomycin. The onset of this acute respiratory distress occurred within minutes to hours after the vinca alkaloid injection. The total number of doses for each drug has varied considerably. Bronchodilators, steroids and/or oxygen have produced symptomatic relief.

A few cases of adult respiratory distress syndrome have been reported in patients receiving mitomycin in combination with other chemotherapy and maintained at FIO₂ concentrations greater than 50% perioperatively. Therefore, caution should be exercised using only enough oxygen to provide adequate arterial saturation since oxygen itself is toxic to the lungs. Careful attention should be paid to fluid balance and overhydration should be avoided.

Bladder fibrosis/contraction has been reported with intravesical administration (not an approved route of administration), which in rare cases has required cystectomy.

Nursing Mothers

It is not known if mitomycin is found in human milk. Because many drugs are found in milk, it is recommended that women receiving mitomycin not breast feed because of the potential for serious adverse reactions from mitomycin in nursing infants.

Pediatric Use

Safety and effectiveness in pediatric patients have not been established.

ADVERSE REACTIONS

Bone Marrow Toxicity

This was the most common and most serious toxicity, occurring in 605 of 937 patients (64.4%). Thrombocytopenia and/or leukopenia may occur anytime within 8 weeks after onset of therapy with an average time of 4 weeks. Recovery after cessation of therapy was within 10 weeks. About 25% of the leukopenic or thrombocytopenic episodes did not recover. Mitomycin produces cumulative myelosuppression.

Integument and Mucous Membrane Toxicity

This has occurred in approximately 4% of patients treated with mitomycin. Cellulitis at the injection site has been reported and is occasionally severe. Stomatitis and alopecia also occur frequently. Rashes are rarely reported. The most important dermatological problem with this drug, however, is the necrosis and consequent sloughing of tissue which results if the drug is extravasated during injection. Extravasation may occur with or without an accompanying stinging or burning sensation and even if there is adequate blood return when the injection needle is aspirated. There have been reports of delayed erythema and/or ulceration occurring either at or distant from the injection site, weeks to months after mitomycin, even when no obvious evidence of extravasation was observed during administration. Skin grafting has been required in some cases.

Renal Toxicity

2% of 1,281 patients demonstrated a statistically significant rise in creatinine. There appeared to be no correlation between total dose administered or duration of therapy and the degree of renal impairment.

Pulmonary Toxicity

This has occurred infrequently but can be severe and may be life-threatening. Dyspnea

with a nonproductive cough and radiographic evidence of pulmonary infiltrates may be indicative of mitomycin-induced pulmonary toxicity. If other etiologies are eliminated, mitomycin therapy should be discontinued. Steroids have been employed as treatment of this toxicity, but the therapeutic value has not been determined. A few cases of adult respiratory distress syndrome have been reported in patients receiving mitomycin in combination with other chemotherapy and maintained at FIO₂ concentrations greater than 50% perioperatively.

Hemolytic Uremic Syndrome (HUS)

This serious complication of chemotherapy, consisting primarily of microangiopathic hemolytic anemia (hematocrit \leq 25%), thrombocytopenia (\leq 100,000/mm³), and irreversible renal failure (serum creatinine \geq 1.6 mg/dL) has been reported in patients receiving systemic mitomycin. Microangiopathic hemolysis with fragmented red blood cells on peripheral blood smears has occurred in 98% of patients with the syndrome. Other less frequent complications of the syndrome may include pulmonary edema (65%), neurologic abnormalities (16%), and hypertension. Exacerbation of the symptoms associated with HUS has been reported in some patients receiving blood product transfusions. A high mortality rate (52%) has been associated with this syndrome.

The syndrome may occur at any time during systemic therapy with mitomycin as a single agent or in combination with other cytotoxic drugs. Less frequently, HUS has also been reported in patients receiving combinations of cytotoxic drugs not including mitomycin. Of 83 patients studied, 72 developed the syndrome at total doses exceeding 60 mg of mitomycin. Consequently, patients receiving \geq 60 mg of mitomycin should be monitored closely for unexplained anemia with fragmented cells on peripheral blood smear, thrombocytopenia, and decreased renal function.

The incidence of the syndrome has not been defined.

Therapy for the syndrome is investigational.

Cardiac Toxicity

Congestive heart failure, often treated effectively with diuretics and cardiac glycosides, has rarely been reported. Almost all patients who experienced this side effect had received prior doxorubicin therapy.

Acute Side Effects Due to Mitomycin were fever, anorexia, nausea, and vomiting. They occurred in about 14% of 1,281 patients.

Other

Headache, blurring of vision, confusion, drowsiness, syncope, fatigue, edema, thrombophlebitis, hematemesis, diarrhea, and pain. These did not appear to be dose related and were not unequivocally drug related. They may have been due to the primary or metastatic disease processes. Malaise and asthenia have been reported as part of postmarketing surveillance. Bladder fibrosis/contraction has been reported with intravesical administration (see PRECAUTIONS).

DOSAGE AND ADMINISTRATION

Mitomycin should be given intravenously only, using care to avoid extravasation of the compound. If extravasation occurs, cellulitis, ulceration, and slough may result.

Each vial contains either mitomycin 20 mg and mannitol 40 mg or mitomycin 40 mg and mannitol 80 mg. To administer, add Sterile Water for Injection 40 mL or 80 mL, respectively. Shake to dissolve. If product does not dissolve immediately, allow to stand at room temperature until solution is obtained.

After full hematological recovery (see guide to dosage adjustment) from any previous chemotherapy, the following dosage schedule may be used at 6- to 8-week intervals:

20 mg/m² intravenously as a single dose via a functioning intravenous catheter.

Because of cumulative myelosuppression, patients should be fully reevaluated after each course of mitomycin, and the dose reduced if the patient has experienced any toxicities. Doses greater than 20 mg/m² have not been shown to be more effective and are more toxic than lower doses.

The following schedule is suggested as a guide to dosage adjustment:

Nadir After Prior Dose		Percentage of Prior Dose To Be Given
Leukocytes/mm³	Platelets/mm³	
>4000	>100,000	100%
3000 to 3999	75,000 to 99,999	100%
2000 to 2999	25,000 to 74,999	70%
<2000	<25,000	50%

No repeat dosage should be given until leukocyte count has returned to 4000/mm³ and platelet count to 100,000/mm³.

When mitomycin is used in combination with other myelosuppressive agents, the doses should be adjusted accordingly. If the disease continues to progress after two courses of mitomycin, the drug should be stopped since chances of response are minimal.

Stability

1. **Unreconstituted** mitomycin stored at controlled room temperature is stable for the lot life indicated on the package. Avoid excessive heat (over 40°C).
2. **Reconstituted** with Sterile Water for Injection to a concentration of 0.5 mg per mL, mitomycin is stable for 14 days refrigerated or 7 days at room temperature. Protect reconstituted solution from light.
3. **Diluted** in various IV fluids at room temperature, to a concentration of 20 to 40

micrograms per mL:

IV Fluid	Stability
5% Dextrose Injection	3 hours
0.9% Sodium Chloride Injection	12 hours
Sodium Lactate Injection	24 hours

4. **The combination** of mitomycin (5 mg to 15 mg) and heparin (1,000 units to 10,000 units) in 30 mL of 0.9% Sodium Chloride Injection is stable for 48 hours at room temperature.

Procedures For Proper Handling and Disposal of anticancer drugs should be considered. Several guidelines on this subject have been published.¹⁻⁷ There is no general agreement that all of the procedures recommended in the guidelines are necessary or appropriate.

Parenteral drug products should be inspected visually for particulate matter and discoloration prior to administration, whenever solution and container permit.

HOW SUPPLIED

Mitomycin for Injection, USP is supplied in the following package strengths:

NDC 0143-9279-01 20 mg; individually-boxed vial

NDC 0143-9280-01 40 mg; individually-boxed vial

Store dry powder at 20° to 25°C (68° to 77°F) [See USP Controlled Room Temperature], protected from light.

To report SUSPECTED ADVERSE REACTIONS, contact Hikma Pharmaceuticals USA Inc. at 1-877-845-0689, or the FDA at 1-800-FDA-1088 or www.fda.gov/medwatch.

For Product Inquiry call 1-877-845-0689.

REFERENCES

- 1.Recommendations for the Safe Handling of Parenteral Antineoplastic Drugs. NIH Publication No. 83-2621. For sale by the Superintendent of Documents, U.S. Government Printing Office, Washington, D.C. 20402.
- 2.AMA Council Report. Guidelines for Handling Parenteral Antineoplastics, *JAMA*. 1985; 253(11):1590-1592.
- 3.National Study Commission on Cytotoxic Exposure—Recommendations for Handling Cytotoxic Agents. Available from Louis P. Jeffrey, Sc.D., Chairman, National Study Commission on Cytotoxic Exposure, Massachusetts College of Pharmacy and Allied Sciences, 179 Longwood Avenue, Boston, Massachusetts 02115.
- 4.Clinical Oncological Society of Australia: Guidelines and Recommendations for Safe Handling of Antineoplastic Agents. *Med J Australia*. 1983; 1:426-428.

- 5. Jones, RB, et al. Safe Handling of Chemotherapeutic Agents: A Report from the Mount Sinai Medical Center. *Ca—A Cancer J for Clinicians*. 1983; Sept./Oct., 258–263.
- 6. American Society of Hospital Pharmacists Technical Assistance Bulletin on Handling Cytotoxic and Hazardous Drugs. *Am J Hosp Pharm*. 1990; 47:1033–1049.
- 7. Controlling Occupational Exposure to Hazardous Drugs. (OSHA WORK-PRACTICE GUIDELINES). *Am J Health-Syst Pharm* 1996; 53: 1669-1685.

Manufactured by

THYMOORGAN PHARMAZIE GmbH,
Schiffgraben 23, 38690 Goslar, Germany

Distributed by

Hikma Pharmaceuticals USA Inc.
Berkeley Heights, NJ 07922

Revised July 2020

127.207.030/01

Vial Label - 20 mg

NDC 0143-9279-01 Rx only

**Mitomycin
for Injection, USP
20 mg per vial**

WARNING:

**Must be administered
intravenously to avoid
tissue damage**

NDC 0143-9279-01 Rx only

**Mitomycin
for Injection, USP**

20 mg per vial

WARNING:
**Must be administered
intravenously to avoid
tissue damage**

Usual Dosage: See package insert for detailed indications, dosage, precautions, and storage information. Each vial contains mitomycin 20 mg and mannitol 40 mg. Sodium hydroxide and/or hydrochloric acid has been added for pH adjustment. Add 40 mL Sterile Water for injection. Shake to dissolve. If product does not dissolve immediately, allow to stand at room temperature until solution is obtained. Each mL of reconstituted solution will contain 0.5 mg of mitomycin. Store dry powder at 20° to 25°C (68° to 77°F) [See USP Controlled Room Temperature], protected from light. Protect reconstituted solution from light. Store solution under refrigeration 2° to 8°C (36° to 46°F), discard after 14 days. If unrefrigerated, discard after 7 days.

Manufactured by
THYMOORGAN PHARMAZIE GmbH, Germany

Distributed by
Hikma, Berkeley Heights, NJ 07922

(01)00301-439279013

LOT:
EXP:

127.206.062/01

Vial Label - 40 mg

NDC 0143-9280-01 Rx only

**Mitomycin
for Injection, USP
40 mg per vial**

WARNING:

Must be administered intravenously to avoid tissue damage

NDC 0143-9280-01 Rx only

Mitomycin for Injection, USP

40 mg per vial

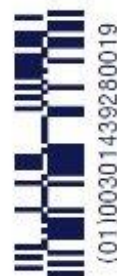
**WARNING:
Must be administered intravenously to avoid tissue damage**

Usual Dosage: See package insert for detailed indications, dosage, precautions, and storage information.

Each vial contains mitomycin 40 mg and mannitol 80 mg. Sodium hydroxide and/or hydrochloric acid has been added for pH adjustment. Add 80 mL Sterile Water for Injection. Shake to dissolve. If product does not dissolve immediately, allow to stand at room temperature until solution is obtained. Each mL of reconstituted solution will contain 0.5 mg of mitomycin. **Store dry powder at 20° to 25°C (68° to 77°F) [See USP Controlled Room Temperature], protected from light. Protect reconstituted solution from light. Store solution under refrigeration 2° to 8°C (36° to 46°F), discard after 14 days. If unrefrigerated, discard after 7 days.**

Manufactured by
THYMOORGAN PHARMAZIE GmbH, Germany
Distributed by
Hikma, Berkeley Heights, NJ 07922

LOT:
EXP:



127.206.063/01

Carton Label - 20 mg

NDC 0143-9279-01 Rx only

**Mitomycin
for Injection, USP
20 mg per vial**

**WARNING:
Must be administered intravenously to avoid tissue damage**



Carton Label - 40 mg

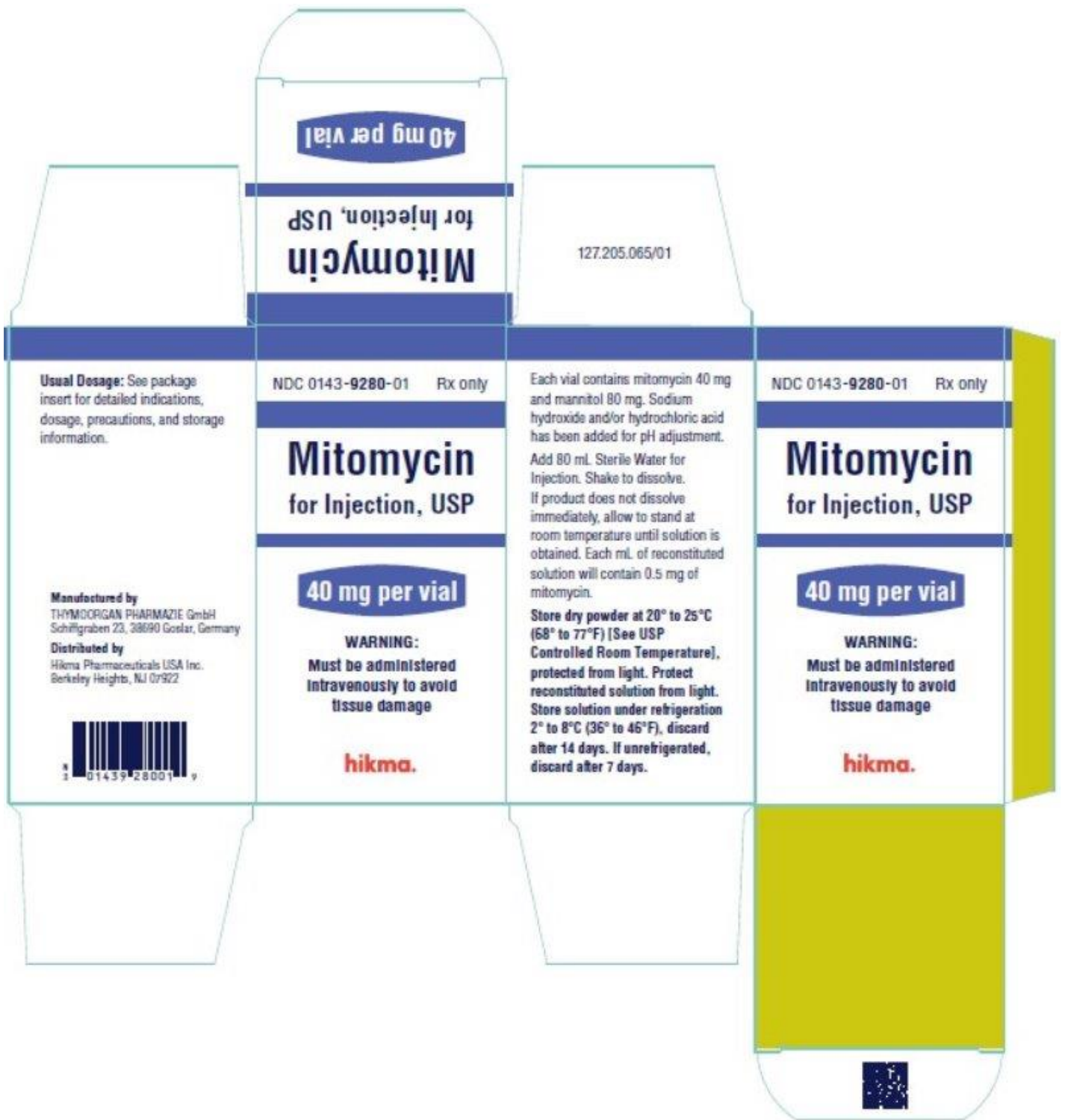
NDC 0143-9280-01 Rx only

**Mitomycin
for Injection, USP**

40 mg per vial

WARNING:

**Must be administered
intravenously to avoid
tissue damage**



Serialization Image



Representative Carton Serialization Image

MITOMYCIN				
mitomycin injection, powder, lyophilized, for solution				
Product Information				
Product Type	HUMAN PRESCRIPTION DRUG	Item Code (Source)	NDC:0143-9279	
Route of Administration	INTRAVENOUS			
Active Ingredient/Active Moiety				
Ingredient Name	Basis of Strength	Strength		
MITOMYCIN (UNII: 50SG953SK6) (MITOMYCIN - UNII:50SG953SK6)	MITOMYCIN	20 mg in 40 mL		
Inactive Ingredients				
Ingredient Name	Strength			
MANNITOL (UNII: 3OWL53L36A)	40 mg in 40 mL			
Packaging				
#	Item Code	Package Description	Marketing Start Date	Marketing End Date
1	NDC:0143-9279-01	1 in 1 BOX, UNIT-DOSE	05/01/1996	
1		40 mL in 1 VIAL; Type 0: Not a Combination Product		
Marketing Information				
Marketing Category	Application Number or Monograph Citation	Marketing Start Date	Marketing End Date	
ANDA	ANDA064117	05/01/1996		

MITOMYCIN

mitomycin injection, powder, lyophilized, for solution

Product Information

Product Type	HUMAN PRESCRIPTION DRUG	Item Code (Source)	NDC:0143-9280
Route of Administration	INTRAVENOUS		

Active Ingredient/Active Moiety

Ingredient Name	Basis of Strength	Strength
MITOMYCIN (UNII: 50SG953SK6) (MITOMYCIN - UNII:50SG953SK6)	MITOMYCIN	40 mg in 80 mL

Inactive Ingredients

Ingredient Name	Strength
MANNITOL (UNII: 3OWL53L36A)	80 mg in 80 mL

Packaging

#	Item Code	Package Description	Marketing Start Date	Marketing End Date
1	NDC:0143-9280-01	1 in 1 BOX, UNIT-DOSE	09/01/1999	
1		80 mL in 1 VIAL; Type 0: Not a Combination Product		

Marketing Information

Marketing Category	Application Number or Monograph Citation	Marketing Start Date	Marketing End Date
ANDA	ANDA064117	09/01/1999	

Labeler - Hikma Pharmaceuticals USA Inc. (001230762)

Revised: 5/2023

Hikma Pharmaceuticals USA Inc.