

**PAROXETINE - paroxetine tablet, film coated, extended release**  
**Modavar Pharmaceuticals LLC**

**HIGHLIGHTS OF PRESCRIBING INFORMATION**

These highlights do not include all the information needed to use PAROXETINE EXTENDED-RELEASE TABLETS safely and effectively. See full prescribing information for PAROXETINE EXTENDED-RELEASE TABLETS.

PAROXETINE extended-release tablets, for oral use Initial U.S. Approval: 1992

**WARNING: SUICIDAL THOUGHTS AND BEHAVIORS**  
*See full prescribing information for complete boxed warning.*

**Increased risk of suicidal thoughts and behavior in pediatric and young adult patients taking antidepressants. Closely monitor all antidepressant-treated patients for clinical worsening and emergence of suicidal thoughts and behaviors. Paroxetine extended-release tablets are not approved for use in pediatric patients.**  
(5.1, 8.4)

**RECENT MAJOR CHANGES**

Warnings and Precautions (5.2, 5.4, 5.5) 8/2023

**INDICATIONS AND USAGE**

Paroxetine extended-release tablets are selective serotonin reuptake inhibitor (SSRI) indicated in adults for the treatment of (1):

- Major Depressive Disorder (MDD)
- Panic Disorder (PD)
- Social Anxiety Disorder (SAD)
- Premenstrual Dysphoric Disorder (PMDD)

**DOSAGE AND ADMINISTRATION**

- Swallow tablet whole; do not chew or crush. (2.1)
- Recommended starting and maximum daily dosage: (2.2, 2.3)

Indication	Starting Dose	Maximum Dose
MDD	25 mg/day	62.5 mg/day
PD	12.5 mg/day	75 mg/day
SAD	12.5 mg/day	37.5 mg/day
PMDD	12.5 mg/day	25 mg/day

- For PMDD, dose continuously or intermittently (luteal phase only). (2.3)
- If inadequate response to starting dosage, titrate in 12.5 mg per day increments once weekly. (2.2, 2.3)
- Elderly patients, patients with severe renal impairment or severe hepatic impairment: Starting dose is 12.5 mg per day. Do not exceed 50 mg per day for treatment of MDD and PD and 37.5 mg per day for treatment of SAD. (2.5)
- When discontinuing paroxetine extended-release tablets, reduce dose gradually. (2.7)

**DOSAGE FORMS AND STRENGTHS**

Extended-release tablets: 12.5 mg, 25 mg, and 37.5 mg tablets. (3)

**CONTRAINDICATIONS**

- Concomitant use of monoamine oxidase inhibitors (MAOIs) or use within 14 days of discontinuing a MAOIs. (4, 5.2, 7)
- Concomitant use of pimozide or thioridazine. (4, 5.3, 7)
- Known hypersensitivity to paroxetine or to any of the inactive ingredients in paroxetine extended-release tablets. (4)

**WARNINGS AND PRECAUTIONS**

- **Serotonin Syndrome:** Increased risk when co-administered with other serotonergic agents, but also when taken alone. If occurs, discontinue paroxetine extended-release tablets and serotonergic agents and initiate supportive measures. (5.2)
- **Embryofetal Toxicity:** May cause fetal harm. Meta-analysis of epidemiological studies have shown increased risk (less than 2-fold) of cardiovascular malformations with exposure during the first trimester. (5.4, 8.1)
- **Increased Risk of Bleeding:** Concomitant use of aspirin, nonsteroidal anti-inflammatory drugs, other antiplatelet drugs, warfarin, and other anticoagulant drugs may increase risk. (5.5)
- **Activation of Mania/Hypomania:** Screen patients for bipolar disorder. (5.6)
- **Seizures:** Use with caution in patients with seizure disorders. (5.8)
- **Angle-Closure Glaucoma:** Angle-closure glaucoma has occurred in patients with untreated anatomically narrow angles, treated with antidepressants (5.9)
- **Sexual Dysfunction:** Paroxetine extended-release tablets may cause symptoms of sexual dysfunction. (5.13)

**ADVERSE REACTIONS**

Most common adverse reactions ( $\geq 5\%$  and at least twice placebo) in placebo- controlled MDD, PD, SAD, and PMDD clinical trials:  
abnormal ejaculation, abnormal vision, asthenia, constipation, decreased appetite, diarrhea, dizziness, dry mouth, female genital disorder, impotence, insomnia, libido decreased, nausea, somnolence, sweating, tremor. (6.1)

**To report SUSPECTED ADVERSE REACTIONS, contact Modavar Pharmaceuticals LLC at 800 688 4697 or [www.modavar.com](http://www.modavar.com) or FDA at 1-800-FDA-1088 or [www.fda.gov/medwatch](http://www.fda.gov/medwatch).**

----- **DRUG INTERACTIONS** -----

- *Drugs Highly Bound to Plasma Protein:* Monitor for adverse reactions and reduce dosage of paroxetine extended-release tablets or other protein-bound drugs (e.g., warfarin) as warranted. (7)
- *Drugs Metabolized by CYP2D6:* Reduce dosage of drugs metabolized by CYP2D6 as warranted. (7)
- *Concomitant use with Tamoxifen:* Consider use of an alternative antidepressant with little or no CYP2D6 inhibition. (5.11, 7)

----- **USE IN SPECIFIC POPULATIONS** -----

- *Pregnancy:* SSRI use, particularly later in pregnancy, may increase the risk of persistent pulmonary hypertension and symptoms of poor adaptation (respiratory distress, temperature instability, feeding difficulty, hypotonia, irritability) in the neonate. (5.4, 8.1)
- *Nursing Mothers:* Discontinue drug or nursing taking into consideration importance of drug to mother. (8.3)

**See 17 for PATIENT COUNSELING INFORMATION.**

**Revised: 4/2024**

---

**FULL PRESCRIBING INFORMATION: CONTENTS\***  
**WARNING: SUICIDAL THOUGHTS AND BEHAVIORS**

**1 INDICATIONS AND USAGE**

**2 DOSAGE AND ADMINISTRATION**

- 2.1 Important Administration Instructions
- 2.2 Dosage in Patients with Major Depressive Disorder, Panic Disorder, and Social Anxiety Disorder
- 2.3 Dosage in Patients with Premenstrual Dysphoric Disorder
- 2.4 Screen for Bipolar Disorder Prior to Starting Paroxetine Extended-Release Tablets
- 2.5 Dosage Modifications for Elderly Patients, Patients with Severe Renal Impairment and Patients with Severe Hepatic Impairment
- 2.6 Switching Patients to or from a Monoamine Oxidase Inhibitor Antidepressant
- 2.7 Discontinuation of Treatment with Paroxetine Extended-Release Tablets

**3 DOSAGE FORMS AND STRENGTHS**

**4 CONTRAINDICATIONS**

**5 WARNINGS AND PRECAUTIONS**

- 5.1 Suicidal Thoughts and Behaviors in Adolescents and Young Adults
- 5.2 Serotonin Syndrome
- 5.3 Drug Interactions Leading to QT Prolongation
- 5.4 Embryofetal Toxicity
- 5.5 Increased Risk of Bleeding
- 5.6 Activation of Mania or Hypomania
- 5.7 Discontinuation Syndrome
- 5.8 Seizures
- 5.9 Angle-Closure Glaucoma
- 5.10 Hyponatremia
- 5.11 Reduction of Efficacy of Tamoxifen
- 5.12 Bone Fracture
- 5.13 Sexual Dysfunction

**6 ADVERSE REACTIONS**

- 6.1 Clinical Trials Experience
- 6.2 Postmarketing Experience

**7 DRUG INTERACTIONS**

- 7.1 Clinically Significant Drug Interactions with Paroxetine Extended-Release Tablets

**8 USE IN SPECIFIC POPULATIONS**

- 8.1 Pregnancy
- 8.2 Lactation
- 8.3 Females and Males of Reproductive Potential
- 8.4 Pediatric Use
- 8.5 Geriatric Use
- 8.6 Renal and/or Hepatic Impairment

## 10 OVERDOSAGE

## 11 DESCRIPTION

## 12 CLINICAL PHARMACOLOGY

12.1 Mechanism of Action

12.2 Pharmacodynamics

12.3 Pharmacokinetics

## 13 NONCLINICAL TOXICOLOGY

13.1 Carcinogenesis, Mutagenesis, Impairment of Fertility

## 14 CLINICAL STUDIES

14.1 Major Depressive Disorder

14.2 Panic Disorder

14.3 Social Anxiety Disorder

14.4 Premenstrual Dysphoric Disorder

## 16 HOW SUPPLIED/STORAGE AND HANDLING

## 17 PATIENT COUNSELING INFORMATION

\* Sections or subsections omitted from the full prescribing information are not listed.

---

## FULL PRESCRIBING INFORMATION

### WARNING: SUICIDAL THOUGHTS AND BEHAVIORS

**Antidepressants increased the risk of suicidal thoughts and behaviors in pediatric and young adult patients in short-term studies. Closely monitor all antidepressant-treated patients for clinical worsening, and for emergence of suicidal thoughts and behaviors [see Warnings and Precautions (5.1)]. Paroxetine extended-release tablets are not approved for use in pediatric patients [see Use in Specific Populations (8.4)].**

## 1 INDICATIONS AND USAGE

Paroxetine extended-release tablets are indicated in adults for the treatment of:

- Major depressive disorder (MDD)
- Panic disorder (PD)
- Social anxiety disorder (SAD)
- Premenstrual dysphoric disorder (PMDD)

## 2 DOSAGE AND ADMINISTRATION

### 2.1 Important Administration Instructions

Administer paroxetine extended-release tablets as a single daily dose in the morning, with or without food. Swallow tablets whole and do not chew or crush.

### 2.2 Dosage in Patients with Major Depressive Disorder, Panic Disorder, and Social Anxiety Disorder

The recommended initial dosage and maximum dosage of paroxetine extended-release tablets in patients with MDD, PD, and SAD are presented in Table 1.

In patients with an inadequate response, dosage may be increased in increments of 12.5 mg per day at intervals of at least 1 week, depending on tolerability.

### Table 1: Recommended Daily Dosage of Paroxetine Extended-Release Tablets in Patients with MDD, PD, and SAD

Indication	Starting Dose	Maximum Dose
MDD	25 mg	62.5 mg
PD	12.5 mg	75 mg
SAD	12.5 mg	37.5 mg

### 2.3 Dosage in Patients with Premenstrual Dysphoric Disorder

The recommended starting dosage in women with PMDD is 12.5 mg per day. Paroxetine extended-release tablets may be administered either continuously (every day throughout the menstrual cycle) or intermittently (only during the luteal phase of the menstrual cycle, i.e., starting the daily dosage 14 days prior to the anticipated onset of menstruation and continuing through the onset of menses). Intermittent dosing is repeated with each new cycle.

In patients with an inadequate response, the dosage may be increased to the maximum recommended dosage of 25 mg per day, depending on tolerability. Institute dosage adjustments at intervals of at least 1 week.

### 2.4 Screen for Bipolar Disorder Prior to Starting Paroxetine Extended-Release Tablets

Prior to initiating treatment with paroxetine extended-release tablets or another antidepressant, screen patients for a personal or family history of bipolar disorder, mania, or hypomania [see *Warnings and Precautions* (5.6)].

### 2.5 Dosage Modifications for Elderly Patients, Patients with Severe Renal Impairment and Patients with Severe Hepatic Impairment

The recommended initial dose of paroxetine extended-release tablets is 12.5 mg per day for elderly patients, patients with severe renal impairment, and patients with severe hepatic impairment. Reduce initial dose and increase up-titration intervals if necessary. Dosage should not exceed 50 mg per day for MDD or PD and should not exceed 37.5 mg per day for SAD [see *Use in Specific Populations* (8.5, 8.6)].

### 2.6 Switching Patients to or from a Monoamine Oxidase Inhibitor Antidepressant

At least 14 days must elapse between discontinuation of an monoamine oxidase inhibitor (MAOI) antidepressant and initiation of paroxetine extended-release tablets. In addition, at least 14 days must elapse after stopping paroxetine extended-release tablets before starting an MAOI antidepressant [see *Contraindications* (4), *Warnings and Precautions* (5.2)].

### 2.7 Discontinuation of Treatment with Paroxetine Extended-Release Tablets

Adverse reactions may occur upon discontinuation of paroxetine extended-release tablets [see *Warnings and Precautions* (5.7)]. Gradually reduce the dosage rather than stopping paroxetine extended-release tablets abruptly whenever possible.

## 3 DOSAGE FORMS AND STRENGTHS

Paroxetine extended-release tablets are available as:

- 12.5 mg yellow, biconvex, enteric film-coated, extended release, round tablets, debossed with "X1" on one side and plain on the other side. The tablets should be free from all physical defects.
- 25 mg pink, biconvex, enteric film-coated, extended release, round tablets debossed with "X2" on one side and plain on the other side. The tablets should be free from all physical defects.

- 37.5 mg blue, biconvex, enteric film-coated, extended release, round tablets debossed with "X3" on one side and plain on the other side. The tablets should be free from all physical defects.

#### 4 CONTRAINDICATIONS

Paroxetine extended-release tablets are contraindicated in patients:

- Taking, or within 14 days of stopping, MAOIs (including the MAOIs linezolid and intravenous methylene blue) because of an increased risk of serotonin syndrome [See *Warnings and Precautions (5.2), Drug Interactions (7)*].
- Taking thioridazine because of risk of QT prolongation [see *Warnings and Precautions (5.3), Drug Interactions (7)*].
- Taking pimozide because of risk of QT prolongation [see *Warnings and Precautions (5.3), Drug Interactions (7)*].
- With known hypersensitivity (e.g., anaphylaxis, angioedema, Stevens-Johnson syndrome) to paroxetine or to any of the inactive ingredients in paroxetine extended-release tablets [see *Adverse Reactions (6.1, 6.2)*].

#### 5 WARNINGS AND PRECAUTIONS

##### 5.1 Suicidal Thoughts and Behaviors in Adolescents and Young Adults

In pooled analyses of placebo-controlled trials of antidepressant drugs (SSRIs and other antidepressant classes) that included approximately 77,000 adult patients and 4,500 pediatric patients, the incidence of suicidal thoughts and behaviors in antidepressant-treated patients age 24 years and younger was greater than in placebo-treated patients. There was considerable variation in risk of suicidal thoughts and behaviors among drugs, but there was an increased risk identified in young patients for most drugs studied. There were differences in absolute risk of suicidal thoughts and behaviors across the different indications, with the highest incidence in patients with MDD. The drug-placebo differences in the number of cases of suicidal thoughts and behaviors per 1,000 patients treated are provided in Table 2.

**Table 2: Risk Differences of the Number of Patients of Suicidal Thoughts and Behaviors in the Pooled Placebo-Controlled Trials of Antidepressants in Pediatric and Adult Patients**

Age Range	Drug-Placebo Difference in Number of Patients of Suicidal Thoughts and Behaviors per 1,000 Patients Treated
	Increases Compared to Placebo
<18 years old	14 additional patients
18 to 24 years old	5 additional patients
	Decreases Compared to Placebo
25 to 64 years old	1 fewer patient
≥65 years old	6 fewer patients

It is unknown whether the risk of suicidal thoughts and behaviors in children, adolescents, and young adults extends to longer-term use, i.e., beyond four months. However, there is substantial evidence from placebo-controlled maintenance trials in adults with MDD that antidepressants delay the recurrence of depression and that depression itself is a risk factor for suicidal thoughts and behaviors.

Monitor all antidepressant-treated patients for any indication for clinical worsening and emergence of suicidal thoughts and behaviors, especially during the initial few months of drug therapy, and at times of dosage changes. Counsel family members or caregivers of patients to monitor for changes in behavior and to alert the healthcare provider.

Consider changing the therapeutic regimen, including possibly discontinuing paroxetine extended-release tablets, in patients whose depression is persistently worse, or who are experiencing emergent suicidal thoughts or behaviors.

## 5.2 Serotonin Syndrome

Serotonin-norepinephrine reuptake inhibitors (SNRIs) and SSRIs, including paroxetine extended-release tablets, can precipitate serotonin syndrome, a potentially life-threatening condition. The risk is increased with concomitant use of other serotonergic drugs (including triptans, tricyclic antidepressants, fentanyl, lithium, tramadol, meperidine, methadone, tryptophan, buspirone, amphetamines, and St. John's Wort) and with drugs that impair metabolism of serotonin, i.e., MAOIs [see *Contraindications (4)*, *Drug Interactions (7.1)*]. Serotonin syndrome can also occur when these drugs are used alone.

Serotonin syndrome signs and symptoms may include mental status changes (e.g., agitation, hallucinations, delirium, and coma), autonomic instability (e.g., tachycardia, labile blood pressure, dizziness, diaphoresis, flushing, hyperthermia), neuromuscular symptoms (e.g., tremor, rigidity, myoclonus, hyperreflexia, incoordination), seizures, and gastrointestinal symptoms (e.g., nausea, vomiting, diarrhea).

The concomitant use of paroxetine extended-release tablets with MAOIs is contraindicated. In addition, do not initiate paroxetine extended-release tablets in a patient being treated with MAOIs such as linezolid or intravenous methylene blue. No reports involved the administration of methylene blue by other routes (such as oral tablets or local tissue injection). If it is necessary to initiate treatment with an MAOI such as linezolid or intravenous methylene blue in a patient taking paroxetine extended-release tablets, discontinue paroxetine extended-release tablets before initiating treatment with the MAOI [see *Contraindications (4)*, *Drug Interactions (7.1)*].

Monitor all patients taking paroxetine extended-release tablets for the emergence of serotonin syndrome. Discontinue treatment with paroxetine extended-release tablets and any concomitant serotonergic agents immediately if the above symptoms occur, and initiate supportive symptomatic treatment. If concomitant use of paroxetine extended-release tablets with other serotonergic drugs is clinically warranted, inform patients of the increased risk for serotonin syndrome and monitor for symptoms.

## 5.3 Drug Interactions Leading to QT Prolongation

The CYP2D6 inhibitory properties of paroxetine can elevate plasma levels of thioridazine and pimozide. Since thioridazine and pimozide given alone produce prolongation of the QTc interval and increase the risk of serious ventricular arrhythmias, the use of paroxetine extended-release tablets are contraindicated in combination with thioridazine and pimozide [see *Contraindications (4)*, *Drug Interactions (7)*, *Clinical Pharmacology (12.3)*].

## 5.4 Embryofetal Toxicity

Based on meta-analyses of epidemiological studies, exposure to paroxetine in the first trimester of pregnancy is associated with a less than 2-fold increase in the rate of cardiovascular malformations among infants. For women who intend to become pregnant or who are in their first trimester of pregnancy, Paroxetine extended-release tablets, should be initiated only after consideration of the other available treatment options [see *Use in Specific Populations (8.1)*].

## 5.5 Increased Risk of Bleeding

Drugs that interfere with serotonin reuptake inhibition, including paroxetine extended-release tablets, increase the risk of bleeding events. Concomitant use of aspirin, nonsteroidal anti-inflammatory drugs (NSAIDs), other antiplatelet drugs, warfarin, and other anticoagulants may add to this risk. Case reports and epidemiological studies

(case-control and cohort design) have demonstrated an association between use of drugs that interfere with serotonin reuptake and the occurrence of gastrointestinal bleeding. Based on data from the published observational studies, exposure to SSRIs, particularly in the month before delivery, has been associated with a less than 2-fold increase in the risk of postpartum hemorrhage [see *Use in Specific Populations (8.1)*]. Bleeding events related to drugs that interfere with serotonin reuptake have ranged from ecchymoses, hematomas, epistaxis, and petechiae to life-threatening hemorrhages.

Inform patients about the increased risk of bleeding associated with the concomitant use of paroxetine extended-release tablets and antiplatelet agents or anticoagulants. For patients taking warfarin, carefully monitor the international normalized ratio.

## **5.6 Activation of Mania or Hypomania**

In patients with bipolar disorder, treating a depressive episode with paroxetine extended-release tablets or another antidepressant may precipitate a mixed/manic episode. During controlled clinical trials of immediate-release paroxetine hydrochloride, hypomania or mania occurred in approximately 1% of paroxetine-treated unipolar patients compared to 1.1% of active-control and 0.3% of placebo-treated unipolar patients. Prior to initiating treatment with paroxetine extended-release tablets, screen patients for any personal or family history of bipolar disorder, mania, or hypomania.

## **5.7 Discontinuation Syndrome**

Adverse reactions after discontinuation of serotonergic antidepressants, particularly after abrupt discontinuation, include: nausea, sweating, dysphoric mood, irritability, agitation, dizziness, sensory disturbances (e.g., paresthesia, such as electric shock sensations), tremor, anxiety, confusion, headache, lethargy, emotional lability, insomnia, hypomania, tinnitus, and seizures. A gradual reduction in dosage rather than abrupt cessation is recommended whenever possible [See *Dosage and Administration (2.7)*].

Adverse reactions have been reported upon discontinuation of treatment with paroxetine in pediatric patients. The safety and effectiveness of paroxetine extended-release tablets in pediatric patients have not been established [see *Boxed Warning, Warnings and Precautions (5.1), Use in Specific Populations (8.4)*].

## **5.8 Seizures**

Paroxetine extended-release tablets has not been systematically evaluated in patients with seizure disorders. Patients with history of seizures were excluded from clinical studies. Paroxetine extended-release tablets should be prescribed with caution in patients with a seizure disorder and should be discontinued in any patient who develops seizures.

## **5.9 Angle-Closure Glaucoma**

The pupillary dilation that occurs following use of many antidepressant drugs including paroxetine extended-release tablets may trigger an angle closure attack in a patient with anatomically narrow angles who does not have a patent iridectomy. Cases of angle-closure glaucoma associated with use of paroxetine hydrochloride tablets have been reported. Avoid use of antidepressants, including paroxetine extended-release tablets, in patients with untreated anatomically narrow angles.

## **5.10 Hyponatremia**

Hyponatremia may occur as a result of treatment with SNRIs and SSRIs, including paroxetine extended-release tablets. Cases with serum sodium lower than 110 mmol/L have been reported. Signs and symptoms of hyponatremia include headache, difficulty concentrating, memory impairment, confusion, weakness, and unsteadiness, which may lead to falls. Signs and symptoms associated with more severe and/or acute cases have included hallucination, syncope, seizure, coma, respiratory arrest, and death. In many cases, this hyponatremia appears to be the result of the syndrome of inappropriate antidiuretic hormone secretion (SIADH).

In patients with symptomatic hyponatremia, discontinue paroxetine extended-release tablets and institute appropriate medical intervention. Elderly patients, patients taking diuretics, and those who are volume-depleted may be at greater risk of developing hyponatremia with SNRIs and SSRIs. [see *Use in Specific Populations (8.5)*].

### **5.11 Reduction of Efficacy of Tamoxifen**

Some studies have shown that the efficacy of tamoxifen, as measured by the risk of breast cancer relapse/mortality, may be reduced with concomitant use of paroxetine as a result of paroxetine's irreversible inhibition of CYP2D6 and lower blood levels of tamoxifen [see *Drug Interactions (7.1)*]. One study suggests that the risk may increase with longer duration of coadministration. However, other studies have failed to demonstrate such a risk. When tamoxifen is used for the treatment or prevention of breast cancer, prescribers should consider using an alternative antidepressant with little or no CYP2D6 inhibition.

### **5.12 Bone Fracture**

Epidemiological studies on bone fracture risk during exposure to some antidepressants, including SSRIs, have reported an association between antidepressant treatment and fractures. There are multiple possible causes for this observation, and it is unknown to what extent fracture risk is directly attributable to SSRI treatment.

### **5.13 Sexual Dysfunction**

Use of SSRIs, including paroxetine extended-release tablets, may cause symptoms of sexual dysfunction [see *Adverse Reactions (6.1)*]. In male patients, SSRI use may result in ejaculatory delay or failure, decreased libido, and erectile dysfunction. In female patients, SSRI use may result in decreased libido and delayed or absent orgasm.

It is important for prescribers to inquire about sexual function prior to initiation of paroxetine extended-release tablets and to inquire specifically about changes in sexual function during treatment, because sexual function may not be spontaneously reported. When evaluating changes in sexual function, obtaining a detailed history (including timing of symptom onset) is important because sexual symptoms may have other causes, including the underlying psychiatric disorder. Discuss potential management strategies to support patients in making informed decisions about treatment.

## **6 ADVERSE REACTIONS**

The following adverse reactions are included in more detail in other sections of the prescribing information:

- Hypersensitivity reactions to paroxetine [see *Contraindications (4)*]
- Suicidal Thoughts and Behaviors [see *Warnings and Precautions (5.1)*]
- Serotonin Syndrome [see *Warnings and Precautions (5.2)*]
- Embryofetal and Neonatal Toxicity [see *Warnings and Precautions (5.4)*]
- Increased Risk of Bleeding [see *Warnings and Precautions (5.5)*]
- Activation of Mania/Hypomania [see *Warnings and Precautions (5.6)*]
- Discontinuation Syndrome [see *Warnings and Precautions (5.7)*]
- Seizures [see *Warnings and Precautions (5.8)*]
- Angle-closure Glaucoma [see *Warnings and Precautions (5.9)*]
- Hyponatremia [see *Warnings and Precautions (5.10)*]
- Bone Fracture [see *Warnings and Precautions (5.12)*]
- Sexual Dysfunction [see *Warnings and Precautions (5.13)*]

### **6.1 Clinical Trials Experience**

Because clinical trials are conducted under widely varying conditions, adverse reaction rates observed in the clinical trials of a drug cannot be directly compared to rates in the clinical trials of another drug and may not reflect the rates observed in practice.



Safety data for paroxetine extended-release tablets is from 11 short-term, placebo-controlled clinical trials including 3 studies in patients with major depressive disorder (MDD) (Studies 1, 2, and 3), 3 studies in patients with panic disorder (PD) (Studies 4, 5, and 6), 1 study in patients with social anxiety disorder (SAD) (Study 7), and 4 studies in female patients with premenstrual dysphoric disorder (PMDD) (Studies 8, 9, 10, and 11) [see *Clinical Studies* (14)]. These 11 trials included 1,627 patients treated with paroxetine extended-release tablets.

- Studies 1 and 2 were 12-week studies that enrolled patients 18 to 65 years old who received paroxetine extended-release tablets at doses ranging from 25 mg to 62.5 mg once daily. Study 3 was a 12-week study in patients 60 to 88 years old who received paroxetine extended-release tablets at doses ranging from 12.5 mg to 50 mg once daily.
- Studies 4, 5, and 6 were 10-week studies in patients 19 to 72 years old who received paroxetine extended-release tablets at doses ranging from 12.5 mg to 75 mg once daily.
- Study 7 was a 12-week study that enrolled adult patients who received paroxetine extended-release tablets at doses ranging from 12.5 mg to 37.5 mg once daily.
- Studies 8, 9, and 10 were 12-week, placebo-controlled trials in female patients 18 to 46 years old who received paroxetine extended-release tablets at doses of 12.5 mg or 25 mg once daily. Study 11 was a 12-week placebo-controlled trial in patients 18 to 46 years old who received paroxetine extended-release tablets 2 weeks prior to the onset of menses (luteal phase dosing) at doses of 12.5 mg or 25 mg once daily.

Adverse Reactions Leading to Discontinuation in Patients with MDD, PD, SAD, and PMDD

In pooled studies in patients with MDD, PD and SAD, the most common adverse reactions leading to study withdrawal were: nausea (up to 4% of patients), asthenia, headache, depression, insomnia, and abnormal liver function tests (each occurring in up to 2% of patients), and dizziness, somnolence, and diarrhea (each occurring in up to 1% of patients).

In pooled studies for PMDD, the most common adverse reactions leading to study withdrawal were: nausea (occurring in up to 6% of patients), asthenia (occurring in up to 5% of patients), somnolence (occurring in up to 4% of patients), insomnia (occurring in approximately 2% of patients); and impaired concentration, dry mouth, dizziness, decreased appetite, sweating, tremor, yawn and diarrhea (occurring in less than or equal to 2% of patients).

Adverse Reactions in MDD, PD, and SAD

Table 3 presents the most common adverse reactions in paroxetine extended-release tablets-treated patients (incidence  $\geq$  5% and greater than placebo within at least 1 of the indications) in controlled trials in patients with MDD, PD, and SAD.

**Table 3. Adverse Reactions ( $\geq$ 5% of Patients Treated with Paroxetine Extended-Release Tablets and Greater than Placebo) in 10 to 12 Week Studies of MDD, PD, and SAD**

Body System/ Adverse Reaction	MDD 18 to 65 year olds		MDD $\geq$ 60 years old		Panic Disorder		Social Anxiety Disorder	
	Paroxetine Extended- Release Tablets (N=212) %	Placebo (N=211) %	Paroxetine Extended- Release Tablets (N=104) %	Placebo (N=109) %	Paroxetine Extended- Release Tablets (N=444) %	Placebo (N=445) %	Paroxetine Extended- Release Tablets (N=186) %	Placebo (N=184) %
<b>Body as a Whole</b>								
Headache	27	20	17	13	NA	NA	23	17
Asthenia	14	9	15	14	15	10	18	7
Abdominal Pain	7	4	-	-	6	4	5	4
Back Pain	5	3	-	-	NA	NA	4	1
<b>Digestive System</b>								
Nausea	22	10	-	-	23	17	22	6
Diarrhea	18	7	15	9	12	9	9	8
Dry Mouth	15	8	18	7	13	9	3	2
Constipation	10	4	13	5	9	6	5	2

Flatulence	6	4	-	-	NA	NA	NA	NA
Decreased Appetite		2	12	5	8	6	1	<1
Dyspepsia	NA	NA	13	10	NA	NA	2	<1
<b>Musculoskeletal System</b>								
Myalgia	NA	NA	-	-	5	3	NA	NA
<b>Nervous System</b>								
Somnolence	22	8	21	12	20	9	9	4
Insomnia	17	9	10	8	20	11	9	4
Dizziness	14	4	9	5	NA	NA	7	4
Libido Decreased	7	3	8	<1	9	4		1
Nervousness	NA	NA	-	-	8	7	NA	NA
Tremor	7	1	7	0	8	2	4	2
Anxiety	NA	NA	-	-	5	4	2	1
<b>Respiratory System</b>								
Sinusitis	NA	NA	-	-	8	5	NA	NA
Yawn		0	-	-	3	0	2	0
<b>Skin and Appendages</b>								
Sweating	6	2	10	<1	7	2	14	3
<b>Special Senses</b>								
Abnormal Vision <sup>a</sup>	5	1	-	-	3	<1	2	0
<b>Urogenital System</b>								
Abnormal Ejaculation <sup>b,c</sup>	26	1	17	3	27	3	15	1
Female Genital Disorder <sup>b,d</sup>	10	<1	-	-	7	1	3	0
Impotence <sup>b</sup>	5	3	9	3	10	1	9	0

Hyphen = the reaction listed occurred in <5% of patients treated with paroxetine extended-release tablets  
 NA = the adverse reaction listed did not occur in this group of patients

- <sup>a</sup> Mostly blurred vision
- <sup>b</sup> Based on the number of males or females
- <sup>c</sup> Mostly anorgasmia or delayed ejaculation
- <sup>d</sup> Mostly anorgasmia or delayed orgasm

Other Adverse Reactions Observed During the Premarketing Evaluation of Paroxetine Extended-Release Tablets

Adverse reactions from studies in MDD (not including Study 3 in elderly patients), PD, and SAD that occurred between 1% and 5% of patients treated with paroxetine extended-release tablets and at a rate greater than in placebo-treated patients include: allergic reaction, tachycardia, vasodilatation, hypertension, migraine, vomiting, weight loss, weight gain, hypertonia, paresthesia, agitation, confusion, myoclonus, concentration impaired, depression, rhinitis, cough increased, bronchitis, photosensitivity, eczema, taste perversion, UTI, menstrual disorder, urinary frequency, urination impaired, and vaginitis.

Adverse Reactions in Patients with PMDD

Table 4 displays adverse reactions that occurred (incidence of 5% or more and greater than placebo within at least 1 of the studies) in patients treated with paroxetine extended-release tablets in Studies 8, 9, 10, and 11.

**Table 4 Adverse Reactions ( $\geq 5\%$  of Patients Treated with Paroxetine Extended-Release Tablets and Greater than Placebo) in Pooled Studies PMDD (Studies 8, 9, 11), and in Study 10<sup>a,b,c</sup>**

Body System/Adverse Reaction	% Reporting Adverse Reaction			
	Continuous Dosing Studies 8, 9, and 10		Luteal Phase Dosing Study 11	
	Paroxetine Extended-Release Tablets (n = 681) %	Placebo (n = 349) %	Paroxetine Extended-Release Tablets (n = 246) %	Placebo (n = 120) %
<b>Body as a Whole</b>				
Asthenia	17	6	15	4
Headache	15	12	NA	NA
Infection	6	4	NA	NA
<b>Digestive System</b>				
Nausea	17	7	18	2
Diarrhea	6	2	6	0
Constipation	5	1	2	<1
<b>Nervous System</b>				
Libido Decreased	12	5	9	6
Somnolence	9	2	3	<1
Insomnia	8	2	7	3
Dizziness	7	3	6	3

Tremor	4	<1	5	0
<b>Skin and Appendages</b>				
Sweating	7	<1	6	<1
<b>Urogenital System</b>				
Female Genital Disorders <sup>C</sup>	8	1	2	0

NA= the adverse reaction information is not available in this population.

<sup>a</sup> <1% means greater than zero and less than 1%.

<sup>b</sup> The luteal phase and continuous dosing PMDD trials were not designed for making direct comparisons between the 2 dosing regimens.

<sup>c</sup> Mostly anorgasmia or difficulty achieving orgasm.

#### Dose Dependent Adverse Reactions

Comparison of the incidence of adverse reactions (placebo vs. 12.5 mg paroxetine extended-release tablets vs. 25 mg paroxetine extended-release tablets) from studies 8, 9, 10 showed the following adverse reactions to be dose-related: Nausea, somnolence, sweating, dry mouth, dizziness, decreased appetite, tremor, impaired concentration, yawn, paresthesia, hyperkinesia, and vaginitis.

#### Male and Female Sexual Dysfunction

Although changes in sexual desire, sexual performance, and sexual satisfaction often occur as manifestations of a psychiatric disorder, they may also be a consequence of SSRI treatment. However, reliable estimates of the incidence and severity of untoward experiences involving sexual desire, performance, and satisfaction are difficult to obtain, in part because patients and healthcare providers may be reluctant to discuss them. Accordingly, estimates of the incidence of untoward sexual experience and performance cited in labeling may underestimate their actual incidence.

The percentage of patients reporting symptoms of sexual dysfunction in the Studies 1 and 2 (nonelderly patients with MDD), 4, 5, 6, 7, 8, 9, 10, and 11 are presented in Table 5:

**Table 5. Adverse Reactions Related To Sexual Dysfunction In Patients Treated With Paroxetine Extended-Release Tablets in Pooled 10 to 12 Week Studies of MDD, PD, SAD, and PMDD**

	Studies 1 and 2 %		Studies 4, 5, and 6 %		Study 7 %		Studies 8, 9, and 11 (Continuous Dosing) %		Study 10 (Luteal Phase Dosing) %	
	Paroxetine Extended-Release Tablets	Placebo	Paroxetine Extended-Release Tablets	Placebo	Paroxetine Extended-Release Tablets	Placebo	Paroxetine Extended-Release Tablets	Placebo	Paroxetine Extended-Release Tablets	Placebo
<b>n (males)</b>	<b>78</b>	<b>78</b>	<b>162</b>	<b>194</b>	<b>88</b>	<b>97</b>	<b>NA</b>	<b>NA</b>	<b>NA</b>	<b>NA</b>
Decreased Libido	10	5	9	6	13	1	NA	NA	NA	NA
Abnormal	26	1	27	2	15	1	NA	NA	NA	NA

	1	2	3	4	5	6	7	8	9	10
ejaculation										
Impotence	5	3	10	1%	9	0	NA	NA	NA	NA
<b>n (females)</b>	<b>134</b>	<b>133</b>	<b>282</b>	<b>251</b>	<b>98</b>	<b>87</b>	<b>681</b>	<b>349</b>	<b>246</b>	<b>120</b>
Decreased Libido	4	2	8	2	4	1	12	5	9	6
Orgasmic Disturbance	10	<1	7	1	3	0	8	1	2	0

NA = the adverse reaction listed did not occur in this group of patients.

Paroxetine treatment has been associated with several cases of priapism. In those cases with a known outcome, patients recovered without sequelae.

#### Less Common Adverse Reactions

The following adverse reactions occurred during the clinical studies of paroxetine extended-release tablets and are not included elsewhere in the labeling.

Reactions are categorized by body system and listed in order of decreasing frequency according to the following definitions: Frequent adverse reactions are those occurring on 1 or more occasions in at least 1/100 patients; infrequent adverse reactions are those occurring in 1/100 to 1/1,000 patients; rare reactions are those occurring in fewer than 1/1,000 patients.

*Cardiovascular System:* Infrequent was postural hypotension.

*Hemic and Lymphatic System:* Rare was thrombocytopenia.

*Metabolic and Nutritional Disorders:* Infrequent were generalized edema and hypercholesteremia.

*Nervous System:* Infrequent were convulsion, akathisia, and manic reaction.

*Psychiatric:* Infrequent were hallucinations.

*Skin and Appendages:* Frequent was rash; infrequent was urticaria; rare was angioedema and erythema multiforme.

*Urogenital System:* Infrequent was urinary retention; rare was urinary incontinence.

## 6.2 Postmarketing Experience

The following reactions have been identified during post approval use of paroxetine. Because these reactions are reported voluntarily from a population of unknown size, it is not always possible to reliably estimate their frequency or establish a causal relationship to drug exposure.

Acute pancreatitis, elevated liver function tests (the most severe cases were deaths due to liver necrosis, and grossly elevated transaminases associated with severe liver dysfunction), Guillain-Barré syndrome, Stevens-Johnson syndrome, toxic epidermal necrolysis, drug reaction with eosinophilia and systemic symptoms (DRESS), priapism, syndrome of inappropriate ADH secretion (SIADH), prolactinemia and galactorrhea; extrapyramidal symptoms which have included akathisia, bradykinesia, cogwheel rigidity, dystonia, hypertonia, trismus; status epilepticus, acute renal failure, pulmonary hypertension, allergic alveolitis, anosmia, hyposmia, anaphylaxis, eclampsia, laryngismus, optic neuritis, porphyria, restless legs syndrome (RLS), ventricular fibrillation, ventricular tachycardia (including torsade de pointes), hemolytic anemia, events related to impaired hematopoiesis (including aplastic anemia, pancytopenia, bone marrow aplasia, and agranulocytosis), and vasculitic syndromes (such as Henoch-Schönlein purpura).

## 7 DRUG INTERACTIONS

### 7.1 Clinically Significant Drug Interactions with Paroxetine Extended-Release

## Tablets

Table 6 includes clinically significant drug interactions with Paroxetine Extended-Release Tablets.

**Table 6: Clinically Significant Drug Interactions with Paroxetine Extended-Release Tablets**

<b>Monoamine Oxidase Inhibitors (MAOIs)</b>	
<i>Clinical Impact</i>	The concomitant use of SSRIs, including paroxetine extended-release tablets, and MAOIs increases the risk of serotonin syndrome.
<i>Intervention</i>	Paroxetine extended-release tablets are contraindicated in patients taking MAOIs, including MAOIs such as linezolid or intravenous methylene blue [see <i>Dosage and Administration (2.6), Contraindications (4), Warnings and Precautions (5.2)</i> ].
<i>Examples</i>	selegiline, tranylcypromine, isocarboxazid, phenelzine, linezolid, methylene blue
<b>Pimozide and Thioridazine</b>	
<i>Clinical Impact</i>	Increased plasma concentrations of pimozide and thioridazine, drugs with a narrow therapeutic index, may increase the risk of QTc prolongation and ventricular arrhythmias.
<i>Intervention</i>	Paroxetine extended-release tablets is contraindicated in patients taking pimozide or thioridazine [see <i>Contraindications (4)</i> ].
<b>Other Serotonergic Drugs</b>	
<i>Clinical Impact</i>	The concomitant use of serotonergic drugs with paroxetine extended-release tablets increases the risk of serotonin syndrome.
<i>Intervention</i>	Monitor patients for signs and symptoms of serotonin syndrome, particularly during treatment initiation and dosage increases. If serotonin syndrome occurs, consider discontinuation of paroxetine extended-release tablets and/or concomitant serotonergic drugs [see <i>Warnings and Precautions (5.2)</i> ].
<i>Examples</i>	Other SSRIs, SNRIs, triptans, tricyclic antidepressants, opioids, lithium, tryptophan, buspirone, St. John's Wort
<b>Drugs that Interfere with Hemostasis (antiplatelet agents and anticoagulants)</b>	
<i>Clinical Impact</i>	The concurrent use of an antiplatelet agent or anticoagulant with paroxetine extended-release tablets may potentiate the risk of bleeding.
<i>Intervention</i>	Inform patients of the increased risk of bleeding associated with the concomitant use of paroxetine extended-release tablets and antiplatelet agents and anticoagulants. For patients taking warfarin, carefully monitor the international normalized ratio [see <i>Warnings and Precautions (5.5)</i> ].
<i>Examples</i>	aspirin, clopidogrel, heparin, warfarin
<b>Drugs Highly Bound to Plasma Protein</b>	
<i>Clinical Impact</i>	Paroxetine extended-release tablets are highly bound to plasma protein. The concomitant use of paroxetine extended-release tablets with another drug that is highly bound to plasma protein may increase free concentrations of paroxetine extended-release tablets or other tightly-bound drugs in plasma.
<i>Intervention</i>	Monitor for adverse reactions and reduce dosage of paroxetine extended-release tablets or other protein-bound drugs as warranted.
<i>Examples</i>	warfarin
<b>Drugs Metabolized by CYP2D6</b>	
<i>Clinical Impact</i>	Paroxetine extended-release tablets are a CYP2D6 inhibitor [see <i>Clinical Pharmacology (12.3)</i> ]. The concomitant use of paroxetine extended-release tablets with a CYP2D6 substrate may increase the exposure of the CYP2D6 substrate.
<i>Intervention</i>	Decrease the dosage of a CYP2D6 substrate if needed with concomitant paroxetine extended-release tablets use. Conversely, an increase in dosage of a CYP2D6 substrate may be needed if paroxetine extended-release tablets are discontinued.
<i>Examples</i>	propafenone, flecainide, atomoxetine, desipramine, dextromethorphan, metoprolol, nebivolol, perphenazine, tolterodine, venlafaxine, risperidone.
<b>Tamoxifen</b>	
<i>Clinical Impact</i>	Concomitant use of tamoxifen with paroxetine extended-release tablets may lead to reduced plasma concentrations of the active metabolite (endoxifen) and reduced efficacy of tamoxifen
<i>Intervention</i>	Consider use of an alternative antidepressant little or no CYP2D6 inhibition

[see Warnings and Precautions (5.11)].

### **Fosamprenavir/Ritonavir**

*Clinical Impact* Co-administration of fosamprenavir/ritonavir with paroxetine significantly decreased plasma levels of paroxetine.

*Intervention* Any dose adjustment should be guided by clinical effect (tolerability and efficacy).

## **8 USE IN SPECIFIC POPULATIONS**

### **8.1 Pregnancy**

#### Pregnancy Exposure Registry

There is a pregnancy exposure registry that monitors pregnancy outcomes in women exposed to antidepressants during pregnancy. Healthcare providers are encouraged to register patients by calling the National Pregnancy Registry for Antidepressants at 1-866-961-2388 or visiting online at <https://womensmentalhealth.org/clinical-and-researchprograms/pregnancyregistry/antidepressants/>.

#### Risk Summary

Based on data from published observational studies, exposure to SSRIs, particularly in the month before delivery, has been associated with a less than 2-fold increase in the risk of postpartum hemorrhage [see Warnings and Precautions (5.5) and Clinical Considerations].

Paroxetine extended-release tablets are associated with a less than 2-fold increase in cardiovascular malformations when administered to a pregnant woman during the first trimester. While individual epidemiological studies on the association between paroxetine use and cardiovascular malformations have reported inconsistent findings, some meta-analyses of epidemiological studies have identified an increased risk of cardiovascular malformations (see Data). There are risks of persistent pulmonary hypertension of the newborn (PPHN) (see Data) and/or poor neonatal adaptation with exposure to selective serotonin reuptake inhibitors (SSRIs), including Paroxetine extended-release tablets, during pregnancy. There also are risks associated with untreated depression in pregnancy (see Clinical Considerations). For women who intend to become pregnant or who are in their first trimester of pregnancy, paroxetine should be initiated only after consideration of the other available treatment options.

No evidence of treatment related malformations was observed in animal reproduction studies, when paroxetine was administered during the period of organogenesis at doses up to 50 mg/kg/day in rats and 6 mg/kg/day in rabbits. These doses are approximately 6 (rat) and less than 2 (rabbit) times the maximum recommended human dose (MRHD – 75 mg) on an mg/m<sup>2</sup> basis. When paroxetine was administered to female rats during the last trimester of gestation and continued through lactation, there was an increase in the number of pup deaths during the first four days of lactation. This effect occurred at a dose of 1 mg/kg/day which is less than the MRHD on an mg/m<sup>2</sup> basis (see Data).

The estimated background risks of major birth defects and miscarriage for the indicated populations are unknown. All pregnancies have a background risk of birth defect, loss, or other adverse outcomes. In the US general population, the estimated background risk of major birth defects and miscarriage in clinically recognized pregnancies is 2 to 4% and 15 to 20%, respectively.

#### Clinical Considerations

##### *Disease-associated maternal and/or embryo/fetal risk*

Women who discontinue antidepressants during pregnancy are more likely to experience a relapse of major depression than women who continue antidepressants. This finding is from a prospective longitudinal study of 201 pregnant women with a history of major depressive disorder who were euthymic and taking antidepressants at the beginning of pregnancy. Consider the risks of untreated depression when discontinuing or changing treatment with antidepressant medication during pregnancy and postpartum.

### *Maternal Adverse Reactions*

Use of Paroxetine extended-release tablets in the month before delivery may be associated with an increased risk of postpartum hemorrhage [see *Warnings and Precautions* (5.5)].

### *Fetal/Neonatal adverse reactions*

Neonates exposed to Paroxetine extended-release tablets and other SSRIs late in the third trimester have developed complications requiring prolonged hospitalization, respiratory support, and tube feeding. Such complications can arise immediately upon delivery. Reported clinical findings have included respiratory distress, cyanosis, apnea, seizures, temperature instability, feeding difficulty, vomiting, hypoglycemia, hypotonia, hypertonia, hyperreflexia, tremors, jitteriness, irritability, and constant crying. These findings are consistent with either a direct toxic effect of SSRIs or possibly a drug discontinuation syndrome. It should be noted that, in some cases, the clinical picture is consistent with serotonin syndrome [see *Warnings and Precautions* (5.4)].

### Data

#### *Human Data*

Published epidemiological studies on the association between first trimester paroxetine use and cardiovascular malformations have reported inconsistent results; however, meta-analyses of population-based cohort studies published between 1996-2017 indicate a less than 2-fold increased risk for overall cardiovascular malformations. Specific cardiac malformations identified in two meta-analyses include approximately 2 to 2.5-fold increased risk for right ventricular outflow tract defects. One meta-analysis also identified an increased risk (less than 2-fold) for bulbus cordis anomalies and anomalies of cardiac septal closure, and an increased risk for atrial septal defects (pooled OR 2.38, 95% CI 1.14-4.97). Important limitations of the studies included in these meta-analyses include potential confounding by indication, depression severity, and potential exposure misclassification.

Exposure to SSRIs, particularly later in pregnancy, may have an increased risk for PPHN. PPHN occurs in 1-2 per 1000 live births in the general population and is associated with substantial neonatal morbidity and mortality.

#### *Animal Data*

Reproduction studies were performed at doses up to 50 mg/kg/day in rats and 6 mg/kg/day in rabbits administered during organogenesis. These doses are approximately 6 (rat) and less than 2 (rabbit) times the maximum recommended human dose (MRHD - 75 mg) on an mg/m<sup>2</sup> basis. These studies have revealed no evidence of malformations. However, in rats, there was an increase in pup deaths during the first 4 days of lactation when dosing occurred during the last trimester of gestation and continued throughout lactation. This effect occurred at a dose of 1 mg/kg/day which is less than the MRHD on an mg/m<sup>2</sup> basis. The no-effect dose for rat pup mortality was not determined. The cause of these deaths is not known.

## **8.2 Lactation**

### Risk Summary

Data from the published literature report the presence of paroxetine in human milk (see *Data*). There are reports of agitation, irritability, poor feeding and poor weight gain in infants exposed to paroxetine through breast milk (see *Clinical Considerations*). There are no data on the effects of paroxetine on milk production. The developmental and health benefits of breastfeeding should be considered along with the mother's clinical need for Paroxetine extended-release tablets and any potential adverse effects on the breastfed infant from Paroxetine extended-release tablets or the underlying maternal condition.

### Clinical Considerations

Infants exposed to Paroxetine extended-release tablets should be monitored for agitation, irritability, poor feeding and poor weight gain.

### Data

Published literature suggests the presence of paroxetine in human milk with relative infant doses ranging between 0.4% to 2.2%, and a milk: plasma ratio of <1. No



significant amounts were detected in the plasma of infants after breastfeeding.

### **8.3 Females and Males of Reproductive Potential**

Infertility

*Male*

Based on findings from clinical studies, paroxetine may affect sperm quality which may impair fertility; it is not known if this effect is reversible [see *Nonclinical Toxicology (13.1)*].

### **8.4 Pediatric Use**

The safety and effectiveness of paroxetine extended-release tablets in pediatric patients have not been established [see *Boxed Warning, Warnings and Precautions (5.1)*].

Three placebo-controlled trials in 752 pediatric patients with MDD have been conducted with immediate-release paroxetine, and effectiveness was not established in pediatric patients.

Decreased appetite and weight loss have been observed in association with the use of SSRIs.

In placebo-controlled clinical trials conducted with pediatric patients, the following adverse reactions were reported in at least 2% of pediatric patients treated with immediate-release paroxetine hydrochloride and at a rate at least twice that for pediatric patients receiving placebo: emotional lability (including self-harm, suicidal thoughts, attempted suicide, crying, and mood fluctuations), hostility, decreased appetite, tremor, sweating, hyperkinesia, and agitation.

Adverse reactions upon discontinuation of treatment with immediate-release paroxetine hydrochloride in the pediatric clinical trials that included a taper phase regimen, which occurred in at least 2% of patients and at a rate at least twice that of placebo, were: emotional lability (including suicidal ideation, suicide attempt, mood changes, and tearfulness), nervousness, dizziness, nausea, and abdominal pain.

### **8.5 Geriatric Use**

SSRIs and SNRIs, including paroxetine extended-release tablets, have been associated with cases of clinically significant hyponatremia in elderly patients, who may be at greater risk for this adverse reaction [see *Warnings and Precautions (5.9)*].

In premarketing clinical trials with immediate-release paroxetine hydrochloride, 17% of paroxetine treated patients (approximately 700) were 65 years or older. Pharmacokinetic studies revealed a decreased clearance in the elderly, and a lower starting dose is recommended; however, no overall differences in safety or effectiveness were observed between these subjects and younger subjects [see *Dosage and Administration (2.5)*, *Clinical Pharmacology (12.3)*].

### **8.6 Renal and/or Hepatic Impairment**

Increased plasma concentrations of paroxetine occur in patients with renal and hepatic

impairment. The initial dosage of Paroxetine extended-release tablets should be reduced in patients with severe renal impairment and patients with severe hepatic impairment [see *Dosage and Administration (2.5)* and *Clinical Pharmacology (12.3)*].

## 10 OVERDOSAGE

The following have been reported with paroxetine tablet overdose:

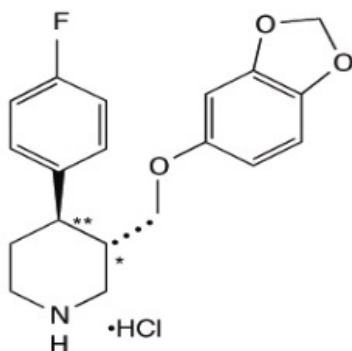
- Seizures, which may be delayed, and altered mental status including coma.
- Cardiovascular toxicity, which may be delayed, including QRS and QTc interval prolongation. Hypertension most commonly seen, but rarely can see hypotension alone or with co-ingestants including alcohol.
- Serotonin syndrome (patients with a multiple drug overdose with other proserotonergic drugs may have a higher risk).

Gastrointestinal decontamination with activated charcoal should be considered in patients who present early after a paroxetine overdose.

Consider contacting a Poison Center (1-800-222-1222) or a medical toxicologist for additional overdose management recommendations.

## 11 DESCRIPTION

Paroxetine extended-release tablets, contains paroxetine hydrochloride hemihydrate, USP an SSRI. It is the hydrochloride salt of a phenylpiperidine compound identified chemically as (3S,4R)-3-[(1,3 benzodioxol-5-yloxy)methyl]-4-(4-fluorophenyl) piperidine hydrochloride hemihydrate or Piperidine, 3-[(1,3-benzodioxol-5-yloxy)methyl]- 4-( 4-fluorophenyl)-, hydrochloride, (3S-trans)- and has the empirical formula of  $C_{19}H_{20}FNO_3 \cdot HCl \cdot \frac{1}{2} H_2O$ . The molecular weight is 374.8 g/mol (329.4 g/mol as free base). The structural formula of paroxetine hydrochloride is:



Paroxetine hydrochloride hemihydrate, USP is a white to off white solid (or) powder, having a melting point range of 120°C to 142°C and soluble in methanol and in alcohol; slightly soluble in water.

Paroxetine extended-release tablets are intended for oral administration. Each film-coated, extended-release tablet contains paroxetine hydrochloride USP equivalent to paroxetine 12.5 mg, 25 mg and 37.5 mg. One layer of the tablet consists of a degradable barrier layer and the other contains the active material in a hydrophilic

matrix.

Inactive ingredients consist of ferric oxide yellow, glyceryl behenate, hypromellose, lactose monohydrate, magnesium stearate, methacrylic acid - ethyl acrylate copolymer (1:1) type A, polyethylene glycols, polysorbate 80, polyvinylpyrrolidone, silicon dioxide, sodium lauryl sulfate, talc, titanium dioxide, triethyl citrate, film-coating material contains - FD&C Yellow #6/sunset yellow FCF aluminum lake, FD&C blue #2/Indigo carmine AL 3% to 5% and D&C Yellow #10 aluminum lake for 12.5 mg; D&C Red #30/Helendon pink aluminum lake for 25 mg and FD&C blue #2/Indigo carmine AL 3% to 5% and FD&C blue #2 Indigo carmine aluminum lake for 37.5 mg.

## 12 CLINICAL PHARMACOLOGY

### 12.1 Mechanism of Action

The mechanism of action of paroxetine in the treatment of major depressive disorder (MDD), panic disorder (PD), social anxiety disorder (SAD), and premenstrual dysphoric disorder (PMDD) is unknown, but is presumed to be linked to potentiation of serotonergic activity in the central nervous system resulting from inhibition of neuronal reuptake of serotonin (5-HT).

### 12.2 Pharmacodynamics

Studies at clinically relevant doses in humans have demonstrated that paroxetine blocks the uptake of serotonin into human platelets. *In vitro* studies in animals also suggest that paroxetine is a potent and highly selective inhibitor of neuronal serotonin reuptake (SSRI) and has only very weak effects on norepinephrine and dopamine neuronal reuptake.

### 12.3 Pharmacokinetics

#### Absorption

Tablets of paroxetine extended-release tablets contain a degradable polymeric matrix designed to control the dissolution rate of paroxetine over a period of approximately 4 to 5 hours. In addition to controlling the rate of drug release *in vivo*, an enteric coat delays the start of drug release until tablets of paroxetine extended-release tablets have left the stomach.

Paroxetine extended-release tablets are completely absorbed after oral dosing of a solution of the hydrochloride salt. In a study in which normal male and female subjects (n = 23) received single oral doses of paroxetine extended-release tablets at 4 dosage strengths (12.5 mg, 25 mg, 37.5 mg, and 50 mg), paroxetine  $C_{max}$  and  $AUC_{0-inf}$  increased disproportionately with dose (as seen also with immediate-release formulations). Mean  $C_{max}$  and  $AUC_{0-inf}$  values at these doses were 2.0, 5.5, 9.0, and 12.5 ng/mL, and 121, 261, 338, and 540 ng•hr. /mL, respectively.  $T_{max}$  was observed typically between 6 and 10 hours post-dose, reflecting a reduction in absorption rate compared with immediate-release formulations. The bioavailability of 25 mg paroxetine extended-release tablets are not affected by food.

#### Distribution

Paroxetine distributes throughout the body, including the CNS, with only 1% remaining in the plasma.

Approximately 95% and 93% of paroxetine is bound to plasma protein at 100 ng/mL and 400 ng/mL, respectively. Under clinical conditions, paroxetine concentrations would normally be less than 400 ng/mL. Paroxetine does not alter the *in vitro* protein binding of phenytoin or warfarin.

#### Elimination

##### Metabolism

The mean elimination half-life of paroxetine was 15 to 20 hours throughout a range of single doses of paroxetine extended-release tablets (12.5 mg, 25 mg, 37.5 mg, and 50 mg). During repeated administration of paroxetine extended-release tablets (25 mg once

daily), steady state was reached within 2 weeks (i.e., comparable to immediate-release formulations). In a repeat-dose study in which normal male and female subjects (n = 23) received paroxetine extended-release tablets (25 mg daily), mean steady state  $C_{max}$ ,  $C_{min}$ , and  $AUC_{0-24}$  values were 30 ng/mL, 20 ng/mL, and 550 ng•hr./mL, respectively.

Based on studies using immediate-release formulations, steady-state drug exposure based on  $AUC_{0-24}$  was several-fold greater than would have been predicted from single-dose data. The excess accumulation is a consequence of the fact that 1 of the enzymes that metabolizes paroxetine is readily saturable.

In steady-state dose proportionality studies involving elderly and nonelderly patients, at doses of the immediate-release formulation of 20 mg to 40 mg daily for the elderly and 20 mg to 50 mg daily for the nonelderly, some nonlinearity was observed in both populations, again reflecting a saturable metabolic pathway (Figure 3).

Paroxetine is extensively metabolized after oral administration. The principal metabolites are polar and conjugated products of oxidation and methylation, which are readily cleared. Conjugates with glucuronic acid and sulfate predominate, and major metabolites have been isolated and identified. Data indicate that the metabolites have no more than 1/50 the potency of the parent compound at inhibiting serotonin uptake. The metabolism of paroxetine is accomplished in part by CYP2D6. Saturation of this enzyme at clinical doses appears to account for the nonlinearity of paroxetine kinetics with increasing dose and increasing duration of treatment. The role of this enzyme in paroxetine metabolism also suggests potential drug-drug interactions [see *Drug Interactions (7.1)*].

#### Excretion

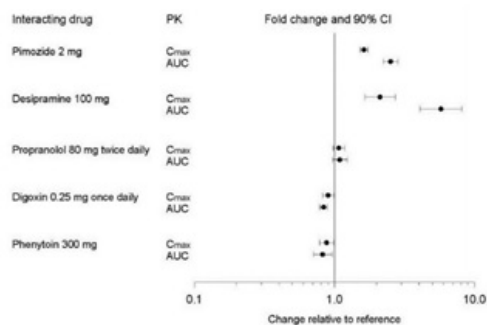
Approximately 64% of a 30-mg oral solution dose of paroxetine was excreted in the urine with 2% as the parent compound and 62% as metabolites over a 10-day post-dosing period. About 36% was excreted in the feces (probably via the bile), mostly as metabolites and less than 1% as the parent compound over the 10-day post-dosing period.

The elimination half-life is approximately 15 to 20 hours after a single dose of paroxetine extended-release tablets. Paroxetine metabolism is mediated in part by CYP2D6, and the metabolites are primarily excreted in the urine and to some extent in the feces. Pharmacokinetic behavior of paroxetine has not been evaluated in subjects who are deficient in CYP2D6 (poor metabolizers).

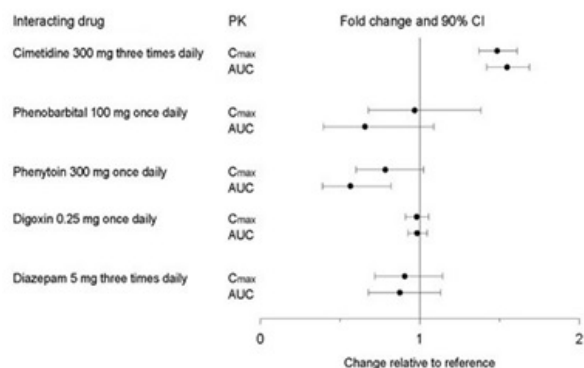
#### Drug Interaction Studies

There are clinically significant, known drug interactions between paroxetine and other drugs [see *Drug Interactions (7)*].

**Figure 1. Impact of Paroxetine on the Pharmacokinetics of Co-Administered Drugs (log scale)**



**Figure 2. Impact of Co-Administered Drugs on the Pharmacokinetics of Paroxetine**



Theophylline: Reports of elevated theophylline levels associated with immediate-release paroxetine treatment have been reported. While this interaction has not been formally studied, it is recommended that theophylline levels be monitored when these drugs are concurrently administered.

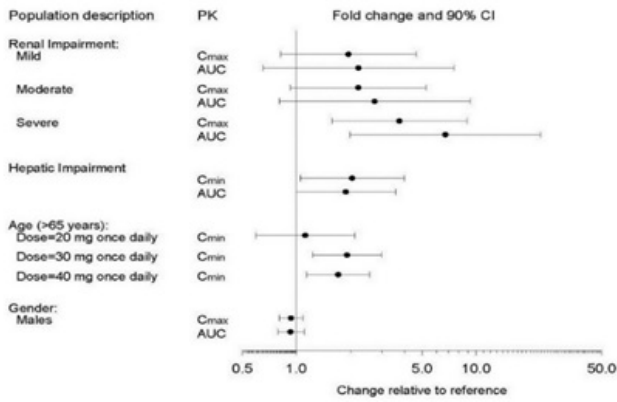
*Drugs Metabolized by Cytochrome CYP3A4*

An *in vivo* interaction study involving the coadministration under steady-state conditions of paroxetine and terfenadine, a substrate for CYP3A4, revealed no effect of paroxetine on terfenadine pharmacokinetics. In addition, *in vitro* studies have shown ketoconazole, a potent inhibitor of CYP3A4 activity, to be at least 100 times more potent than paroxetine as an inhibitor of the metabolism of several substrates for this enzyme, including terfenadine, astemizole, cisapride, triazolam, and cyclosporine. Paroxetine's extent of inhibition of CYP3A4 activity is not expected to be of clinical significance.

Specific Populations

The impact of specific populations on the pharmacokinetics of paroxetine are shown in Figure 3.

**Figure 3. Impact of Specific Population on the Pharmacokinetics of Paroxetine (log scale)**



## 13 NONCLINICAL TOXICOLOGY

### 13.1 Carcinogenesis, Mutagenesis, Impairment of Fertility

#### Carcinogenesis

Two-year carcinogenicity studies were conducted in rodents given paroxetine in the diet at 1, 5, and 25 mg/kg/day (mice) and 1, 5, and 20 mg/kg/day (rats). These doses are up to approximately 1.6 (mouse) and 2.5 (rat) times the MRHD on an mg/m<sup>2</sup> basis. There was a significantly greater number of male rats in the high-dose group with reticulum cell sarcomas (1/100, 0/50, 0/50, and 4/50 for control, low-, middle-, and high-dose groups, respectively) and a significantly increased linear trend across dose groups for the occurrence of lymphoreticular tumors in male rats. Female rats were not affected. Although there was a dose-related increase in the number of tumors in mice, there was no drug-related increase in the number of mice with tumors. The relevance of these findings to humans is unknown.

#### Mutagenesis

Paroxetine produced no genotoxic effects in a battery of 5 *in vitro* and 2 *in vivo* assays that included the following: Bacterial mutation assay, mouse lymphoma mutation assay, unscheduled DNA synthesis assay, and tests for cytogenetic aberrations *in vivo* in mouse bone marrow and *in vitro* in human lymphocytes and in a dominant lethal test in rats.

#### Impairment of Fertility

A reduced pregnancy rate was found in reproduction studies in rats at a dose of paroxetine of 15 mg/kg/day, which is approximately twice the MRHD on an mg/m<sup>2</sup> basis. Irreversible lesions occurred in the reproductive tract of male rats after dosing in toxicity studies for 2 to 52 weeks. These lesions consisted of vacuolation of epididymal tubular epithelium at 50 mg/kg/day and atrophic changes in the seminiferous tubules of the testes with arrested spermatogenesis at 25 mg/kg/day (approximately 6 and 3 times the MRHD on an mg/m<sup>2</sup> basis).

## 14 CLINICAL STUDIES

### 14.1 Major Depressive Disorder

The efficacy of paroxetine extended-release tablets as a treatment for major depressive

disorder (MDD) was established in two 12-week, multicenter, randomized, double-blind, placebo-controlled, flexible dose studies with paroxetine extended-release tablets (Study 1 and Study 2) in adult patients who met Diagnostic and Statistical Manual of Mental Disorders (DSM)-IV criteria for MDD. Study 1 and 2 included patients 18 to 65 years old who received paroxetine extended-release tablets doses of 25 to 62.5 mg/day (N= 212) or placebo (N= 211) once daily compared to immediate-release paroxetine 20 to 50 mg (N=217). A third 12-week, multicenter, randomized, double-blind, placebo-controlled, flexible dose study with paroxetine extended-release tablets (Study 3) included elderly patients, ranging in age from 60 to 88 years old and used paroxetine extended-release tablets doses of 12.5 to 50 mg/day (N=104) or placebo (N=109) once daily compared to immediate-release paroxetine 10 to 40 mg (N=106). In all three studies, paroxetine extended-release tablets were statistically superior to placebo in improving depressive symptoms as measured by the following: the mean change from baseline in the Hamilton Depression Rating Scale (HDRS) total score at Week 12, the mean change from baseline in the Hamilton Depressed Mood item score at Week 12, and the mean change from baseline in the Clinical Global Impression (CGI)-Severity of Illness score.

Long-term efficacy of paroxetine for treatment of MDD in outpatients was established with one randomized withdrawal study with immediate-release paroxetine. Patients who responded to immediate-release paroxetine (HDRS total score <8) during an initial 8-week open-label treatment phase were then randomized to continue immediate-release paroxetine or placebo, for up to 1 year. Patients treated with immediate-release paroxetine demonstrated a statistically significant lower relapse rate during the withdrawal phase (15%) compared to those on placebo (39%). Effectiveness was similar for male and female patients.

#### **14.2 Panic Disorder**

The effectiveness of paroxetine extended-release tablets in the treatment of panic disorder (PD) was evaluated in three 10-week, multicenter, flexible-dose studies (Studies 4, 5, and 6) comparing paroxetine extended-release tablets (12.5 to 75 mg daily) to placebo in adult outpatients 19 to 72 years of age who met panic disorder (with or without agoraphobia) criteria according to DSM-IV. These trials were assessed on the basis of their outcomes on 3 variables: (1) the proportions of patients free of full panic attacks at Week 10; (2) change from baseline to Week 10 in the median number of full panic attacks; and (3) change from baseline to Week 10 in the median Clinical Global Impression Severity score. For Studies 4 and 5, paroxetine extended-release tablets was superior to placebo on 2 of these 3 variables. Study 6 failed to consistently demonstrate a statistically significant difference between paroxetine extended-release tablets and placebo on any of these variables.

For all 3 studies, the mean dose of paroxetine extended-release tablets for completers at Week 10 was approximately 50 mg/day. Subgroup analyses did not indicate that there were any differences in treatment outcomes as a function of age or gender.

Long-term maintenance effects of paroxetine in patients with PD were demonstrated in a randomized-withdrawal study using immediate-release paroxetine. Patients who were responders during a 10-week, double-blind trial (followed by a 3-month double-blind maintenance phase) of immediate-release paroxetine were re-randomized to continue immediate-release paroxetine or placebo in a 3-month, double-blind withdrawal phase. Patients randomized to immediate-release paroxetine were statistically significantly less likely to relapse than placebo-treated patients.

#### **14.3 Social Anxiety Disorder**

The efficacy of paroxetine extended-release tablets as a treatment for social anxiety disorder (SAD) was established, in part, on the basis of extrapolation from the established effectiveness of immediate-release paroxetine in the treatment of SAD. In addition, the effectiveness of paroxetine extended-release tablets in the treatment of SAD was demonstrated in one 12-week, multicenter, double-blind, flexible-dose, placebo-controlled study of adult outpatients with a primary diagnosis of SAD by DSM-IV criteria (Study 7). In Study 7, the effectiveness of paroxetine extended-release tablets (12.5 to 37.5 mg daily) compared to placebo was evaluated on the basis of (1) change from baseline in the Liebowitz Social Anxiety Scale (LSAS) total score at Week 12 and (2) the proportion of responders who scored 1 or 2 (very much improved or much improved)

on the CGI Global Improvement score at Week 12.

In Study 7, paroxetine extended-release tablets demonstrated statistically significant superiority over placebo on both the change on LSAS total score at Week 12 and the CGI Improvement responder criterion at Week 12. For patients who completed the trial, 64% of patients treated with paroxetine extended-release tablets compared to 35% of patients treated with placebo were CGI Improvement responders at Week 12.

Subgroup analyses did not indicate that there were any differences in treatment outcomes as a function of gender. Subgroup analyses of studies utilizing the immediate-release formulation of paroxetine generally did not indicate differences in treatment outcomes as a function of age, race, or gender.

#### **14.4 Premenstrual Dysphoric Disorder**

The effectiveness of paroxetine extended-release tablets for the treatment of Premenstrual Dysphoric Disorder (PMDD) utilizing a continuous dosing regimen has been established in 2 placebo-controlled trials in female patients ages 18 to 46 (Studies 8 and 9 [N=672]). Patients in these trials met DSM-IV criteria for PMDD. Of 1,030 patients including Study 10, who were treated with daily doses of paroxetine extended-release tablets 12.5 or 25 mg/day, or placebo continuously throughout the menstrual cycle for a period of 3 menstrual cycles, the mean duration of the PMDD symptoms was approximately 11 ± 7 years. Patients on systemic hormonal contraceptives were excluded from these trials. Therefore, the efficacy of paroxetine extended-release tablets in combination with systemic (including oral) hormonal contraceptives for the continuous daily treatment of PMDD is unknown.

The VAS score is a patient-rated instrument that mirrors the diagnostic criteria of PMDD as identified in the DSM-IV, and includes assessments for mood, physical symptoms, and other symptoms associated with PMDD. In Studies 8 and 9, 12.5 mg/day and 25 mg/day of paroxetine extended-release tablets were statistically significantly more effective than placebo as measured by change from baseline to Month 3 on the luteal phase VAS score.

In an additional study employing luteal phase dosing (Study 11), patients (N = 366) were treated for the 2 weeks prior to the onset of menses with 12.5 or 25 mg/day of paroxetine extended-release tablets or placebo for a period of 3 months. In this trial, 12.5 mg/day and 25 mg/day of paroxetine extended-release tablets, as luteal phase dosing, was statistically significantly more effective than placebo as measured by change from baseline to luteal phase VAS score at Month 3.

There is insufficient information to determine the effect of race or age on outcome in Studies 8, 9, 10, and 11.

## **16 HOW SUPPLIED/STORAGE AND HANDLING**

Paroxetine extended-release tablets are supplied as follows:

Paroxetine extended-release tablets 12.5 mg are yellow, biconvex, enteric film-coated, extended-release, round tablets, debossed with "X1" on one side and plain on the other side. The tablets should be free from all physical defects.

NDC 72241-029-22                      Bottle of 30's

NDC 72241-029-10                      Bottle of 500's

Paroxetine extended-release tablets 25 mg are pink, biconvex, enteric film-coated, extended-release, round tablets debossed with "X2" on one side and plain on the other side. The tablets should be free from all physical defects.

NDC 72241-030-22                      Bottle of 30's

NDC 72241-030-10                      Bottle of 500's

Paroxetine extended-release tablets 37.5 mg are blue, biconvex, enteric film-coated, extended-release, round tablets debossed with "X3" on one side and plain on the other side. The tablets should be free from all physical defects.

NDC 72241-031-22                      Bottle of 30's



Store at or below 20°C to 25°C (68°F to 77°F) excursions permitted between 15° to 30°C (59° to 86°F) [see USP Controlled Room Temperature].

## **17 PATIENT COUNSELING INFORMATION**

Advise the patient to read the FDA-approved patient labeling (Medication Guide).

### Suicidal Thoughts and Behaviors

Advise patients and caregivers to look for the emergence of suicidality, especially early during treatment and when the dosage is adjusted up or down, and instruct them to report such symptoms to the healthcare provider [see *Boxed Warning and Warnings and Precautions (5.1)*].

### Important Administration Instructions

Instruct patients to swallow paroxetine extended-release tablets whole and to not chew or crush the tablets [see *Dosage and Administration (2.1)*].

### Serotonin Syndrome

Caution patients about the risk of serotonin syndrome, particularly with the concomitant use of paroxetine extended-release tablets with other serotonergic drugs including triptans, tricyclic antidepressants, opioids, lithium, tryptophan, buspirone, amphetamines, St. John's Wort, and with drugs that impair metabolism of serotonin (in particular, MAOIs, both those intended to treat psychiatric disorders and also others, such as linezolid). Instruct patients to contact their health care provider or report to the emergency room if they experience signs or symptoms of serotonin syndrome [see *Warnings and Precautions (5.2), Drug Interactions (7.1)*].

### Concomitant Medications

Advise patients to inform their physician if they are taking, or plan to take, any prescription or over-the-counter drugs, since there is a potential for drug-drug interactions [see *Warning and Precautions (5.3), Drug Interactions (7)*].

### Increased Risk of Bleeding

Inform patients about the concomitant use of paroxetine extended-release tablets with aspirin, NSAIDs, other antiplatelet drugs, warfarin, or other anticoagulants because the combined use has been associated with an increased risk of bleeding. Advise patients to inform their health care providers if they are taking or planning to take any prescription or over-the-counter medications that increase the risk of bleeding [see *Warnings and Precautions (5.5)*].

### Activation of Mania/Hypomania

Advise patients and their caregivers to observe for signs of activation of mania/hypomania and instruct them to report such symptoms to the healthcare provider [see *Warnings and Precautions (5.6)*].

### Discontinuation Syndrome

Advise patients not to abruptly discontinue paroxetine extended-release tablets and to discuss any tapering regimen with their healthcare provider. Inform patients that adverse reactions can occur when paroxetine extended-release tablets are discontinued [See *Warnings and Precautions (5.7)*].

### Sexual Dysfunction

Advise patients that use of paroxetine extended-release tablets may cause symptoms of sexual dysfunction in both male and female patients. Inform patients that they should discuss any changes in sexual function and potential management strategies with their healthcare provider [see *Warnings and Precautions (5.13)*].

### Embryo-Fetal Toxicity

Advise women to notify their healthcare provider if they become pregnant or intend to become pregnant during treatment with Paroxetine extended-release tablets. Advise women of risks associated with first trimester use of Paroxetine extended-release tablets and that use later in pregnancy may lead to an increased risk for neonatal complications requiring prolonged hospitalization, respiratory support, tube feeding, and/or persistent pulmonary hypertension of the newborn (PPHN) [see *Warnings and Precautions (5.4), Use in Specific Populations (8.1)*]. Advise women that there is a pregnancy exposure registry that monitors pregnancy outcomes in women exposed to Paroxetine extended-release tablets during pregnancy [see *Warnings and Precautions (5.4), Use in Specific Populations (8.1)*].

#### Lactation

Advise breastfeeding women using Paroxetine extended-release tablets to monitor infants for agitation, irritability, poor feeding and poor weight gain and to seek medical care if they notice these signs [see *Use in Specific Populations (8.2)*].

#### *Females and Males of Reproductive Potential*

Advise men that Paroxetine extended-release tablets may affect sperm quality, which may impair fertility; it is unknown if this effect is reversible [see *Use in Specific Populations (8.3)*]

#### Allergic Reactions

Advise patients to notify their healthcare provider if they develop an allergic reaction such as rash, hives, swelling, or difficulty breathing [see *Adverse Reactions (6.1, 6.2)*].

#### Manufactured by:

Cadila Pharmaceuticals Limited  
1389, Trasad Road, Dholka-382225,  
District - Ahmedabad,  
Gujarat State, INDIA.

#### Manufactured for:

Modavar Pharmaceuticals LLC.  
1016, 16th Street, Suite 602,  
Washington, DC 20036  
Toll free: 800 688 4697

All registered trademarks in this document are the property of their respective owners.

Revised: April 2024

## **Medication Guide**

### **Paroxetine Extended-Release Tablets (pa rox' e teen)**

#### **What is the most important information I should know about paroxetine extended-release tablets?**

**Paroxetine extended-release tablets can cause serious side effects, including:**

- **Increased risk of suicidal thoughts or actions.** Antidepressant medicines may increase suicidal thoughts and actions in some children and young adults within the first few months of treatment or when the dose is changed. Paroxetine extended-release tablets are not for use in people younger than 18 years of age.

#### **How can I watch for and try to prevent suicidal thoughts and actions?**

- o Depression or other serious mental illnesses are the most important causes of suicidal thoughts and actions.
- o Pay close attention to any changes, especially sudden changes in mood, behavior, thoughts or feelings or if you develop suicidal thoughts or actions. This is very important

when an antidepressant medicine is started or when the dose is changed.

o Call your healthcare provider right away to report new or sudden changes in mood, behavior, thoughts or feelings or if you develop suicidal thoughts or actions.

o Keep all follow-up visits with your healthcare provider as scheduled. Call your healthcare provider between visits as needed, especially if you have concerns about symptoms.

**Call your healthcare provider or get emergency medical help right away if you have any of the following symptoms, especially if they are new, worse, or worry you:**

o attempts to commit suicide	o acting on dangerous impulses
o acting aggressive or violent	o thoughts about suicide or dying
o new or worse depression	o new or worse anxiety or panic attacks
o feeling agitated, restless, angry, or irritable	o trouble sleeping
o an increase in activity and talking more than what is normal for you	o other unusual changes in behavior or mood

### **What is paroxetine extended-release tablets?**

Paroxetine extended-release tablets are a prescription medicine used in adults to treat:

- A certain type of depression called Major Depressive Disorder (MDD)
- Panic Disorder
- Social Anxiety Disorder (SAD)
- Premenstrual Dysphoric Disorder (PMDD)

#### **Do not take paroxetine extended-release tablets if you:**

- take a monoamine oxidase inhibitor (MAOI)
- have stopped taking an MAOI in the last 14 days
- are being treated with the antibiotic linezolid or intravenous methylene blue
- are taking thioridazine
- are taking pimozide
- are allergic to paroxetine or any of the ingredients in paroxetine extended-release tablets. See the end of this Medication Guide for a complete list of ingredients in paroxetine extended-release tablets.

Ask your healthcare provider or pharmacist if you are not sure if you take an MAOI or one of these medicines, including intravenous methylene blue.

**Do not start taking an MAOI for at least 14 days after you stop treatment with paroxetine extended-release tablets.**

#### **Before taking paroxetine extended-release tablets, tell your healthcare provider about all your medical conditions, including if you:**

- have heart problems
- have or had bleeding problems
- have, or have a family history of bipolar disorder, mania or hypomania
- have or had seizures or convulsions
- have glaucoma (high pressure in the eye)
- have low sodium levels in your blood
- have bone problems
- have kidney or liver problems
- are pregnant or plan to become pregnant. Paroxetine extended-release tablets may harm your unborn baby.

o Taking Paroxetine extended-release tablets during your first trimester of pregnancy may cause your baby to be at an increased risk of having a heart problem (cardiac malformations) at birth.

o Taking Paroxetine extended-release tablets during your third trimester of pregnancy may cause your baby to have breathing, temperature, and feeding problems, low muscle tone (floppy baby syndrome), and irritability after birth and may cause your baby to be at an increased risk of a serious lung problem at birth. Talk to your healthcare provider about the risk to your unborn baby if you take Paroxetine extended-release tablets during pregnancy.

o Tell your healthcare provider right away if you become pregnant or think you are pregnant during treatment with paroxetine extended-release tablets.  
o There is a pregnancy registry for females who are exposed to Paroxetine extended-release tablets during pregnancy. The purpose of the registry is to collect information about the health of females exposed to Paroxetine extended-release tablets and their baby. If you become pregnant during treatment with Paroxetine extended-release tablets talk to your healthcare provider about registering with the National Pregnancy Registry for Antidepressants at 1-866-961-2388 or visit online at <https://womensmentalhealth.org/clinical-and-research-programs/pregnancyregistry/antidepressants/>.

• are breastfeeding or plan to breastfeed. Paroxetine passes into your breast milk. Talk to your healthcare provider about the best way to feed your baby during treatment with paroxetine extended-release tablets.

**Tell your healthcare provider about all the medicines you take**, including prescription and over-the-counter medicines, vitamins, and herbal supplements. Paroxetine extended-release tablets and some other medicines may affect each other causing possible serious side effects. Paroxetine extended-release tablets may affect the way other medicines work and other medicines may affect the way paroxetine extended-release tablets works.

**Especially tell your healthcare provider if you take:**

- medicines used to treat migraine headaches called triptans
- tricyclic antidepressants
- lithium
- tramadol, fentanyl, meperidine, methadone, or other opioids
- tryptophan
- buspirone
- amphetamines
- St. John's Wort
- medicines that can affect blood clotting such as aspirin, nonsteroidal anti-inflammatory drugs (NSAIDs), or warfarin
  - diuretics
  - tamoxifen

Ask your healthcare provider if you are not sure if you are taking any of these medicines. Your healthcare provider can tell you if it is safe to take paroxetine extended-release tablets with your other medicines.

Do not start or stop any other medicines during treatment with paroxetine extended-release tablets without talking to your healthcare provider first. Stopping paroxetine extended-release tablets suddenly may cause you to have serious side effects. See, **“What are the possible side effects of paroxetine extended-release tablets?”** Know the medicines you take. Keep a list of them to show to your healthcare provider and pharmacist when you get a new medicine.

**How should I take paroxetine extended-release tablets?**

- Take paroxetine extended-release tablets exactly as your healthcare provider tell you to. Your healthcare provider may need to change the dose of paroxetine extended-release tablets until it is the right dose for you.
- Take paroxetine extended-release tablets 1 time each day in the morning.
- Take Paroxetine extended-release tablets with or without food.
- Swallow paroxetine extended-release tablets whole. Do not chew or crush paroxetine extended-release tablets.
- If you take too much paroxetine extended-release tablets, call your poison control center at 1-800-222-1222 or go to the nearest hospital emergency room right away.

**What are possible side effects of paroxetine extended-release tablets?**

**Paroxetine extended-release tablets can cause serious side effects, including:**

- See, **“What is the most important information I should know about paroxetine extended release tablets?”**
- **Serotonin syndrome.** A potentially life-threatening problem called serotonin syndrome can happen when you take paroxetine extended-release tablets with certain other medicines. See, **“Who should not take paroxetine extended-release tablets?”** **Call your healthcare provider or go to the nearest hospital emergency room right away** if you have any of the following signs and symptoms of serotonin syndrome:

o agitation	o sweating
o seeing or hearing things that are not real (hallucinations)	o flushing
o confusion	o high body temperature (hyperthermia)
o coma	o shaking (tremors), stiff muscles, or muscle twitching
o fast heart beat	o loss of coordination
o changes in blood pressure	o seizures
o dizziness	o nausea, vomiting, diarrhea

• **Medicine interactions.** Taking paroxetine extended-release tablets with certain other medicines including thioridazine and pimozide may increase the risk of developing a serious heart problem called QT prolongation.

• **Abnormal bleeding.** Taking paroxetine extended-release tablets with aspirin, NSAIDs, or blood thinners may add to this risk. Tell your healthcare provider about any unusual bleeding or bruising.

• **Manic episodes.** Manic episodes may happen in people with bipolar disorder who take paroxetine extended-release tablets. Symptoms may include:

o greatly increased energy	o severe problems sleeping
o racing thoughts	o reckless behavior
o unusually grand ideas	o excessive happiness or irritability
o talking more or faster than usual	

• **Discontinuation syndrome.** Suddenly stopping paroxetine extended-release tablets may cause you to have serious side effects. Your healthcare provider may want to decrease your dose slowly. Symptoms may include:

o nausea	o electric shock feeling (paresthesia)	o tiredness
o sweating	o tremor	o problems sleeping
o changes in your mood	o anxiety	o ringing in your ears (tinnitus)
o irritability and agitation	o confusion	o seizures
o dizziness	o headache	

• **Seizures (convulsions).**

**Eye problems (angle-closure glaucoma).** Paroxetine extended-release tablets may cause a type of eye problem called angle-closure glaucoma in people with certain other eye conditions. You may want to undergo an eye examination to see if you are at risk and receive preventative treatment if you are.

• **Low sodium levels in your blood (hyponatremia).** Low sodium levels in your blood that may be serious and may cause death, can happen during treatment with paroxetine extended-release tablets. Elderly people and people who take certain medicines may be at a greater risk for developing low sodium levels in your blood. Signs and symptoms may include:

- o headache
- o difficulty concentrating
- o memory changes
- o confusion
- o weakness and unsteadiness on your feet which can lead to falls

**In more severe or more sudden cases, signs and symptoms include:**

- o seeing or hearing things that are not real (hallucinations)

- o fainting
- o seizures
- o coma
- o stopping breathing (respiratory arrest)
- **Bone fractures.**

• **Sexual problems (dysfunction).** Taking selective serotonin reuptake inhibitors (SSRIs), including paroxetine extended-release tablets, may cause sexual problems.

Symptoms in males may include:

- o Delayed ejaculation or inability to have an ejaculation
- o Decreased sex drive
- o Problems getting or keeping an erection

Symptoms in females may include:

- o Decreased sex drive
- o Delayed orgasm or inability to have an orgasm

Talk to your healthcare provider if you develop any changes in your sexual function or if you have any questions or concerns about sexual problems during treatment with paroxetine extended-release tablets. There may be treatments your healthcare provider can suggest.

**The most common side effects paroxetine extended-release tablets include:**

• male and female sexual function problems	• dry mouth
• blurred vision	• problems sleeping
• weakness (asthenia)	• nausea
• constipation	• sleepiness
• decreased appetite	• sweating
• diarrhea	• tremor
• dizziness	

These are not all the possible side effects of paroxetine extended-release tablets. Call your doctor for medical advice about side effects. You may report side effects to FDA at 1-800-FDA-1088.

**How should I store paroxetine extended-release tablets?**

Store paroxetine extended-release tablets at room temperature between 68°F to 77°F (20°C to 25°C).

**Keep paroxetine extended-release tablets and all medicines out of the reach of children.**

**General information about the safe and effective use of paroxetine extended-release tablets.**

Medicines are sometimes prescribed for purposes other than those listed in a Medication Guide. Do not take paroxetine extended-release tablets for a condition for which it was not prescribed. Do not give paroxetine extended-release tablets to other people, even if they have the same symptoms that you have. It may harm them. You may ask your healthcare provider or pharmacist for information about paroxetine extended-release tablets that is written for healthcare professionals.

**What are the ingredients in paroxetine extended-release tablets?**

**Active ingredient:** Paroxetine hydrochloride hemihydrate, USP

**Inactive ingredients:** ferric oxide yellow, glyceryl behenate, hypromellose, lactose monohydrate, magnesium stearate, methacrylic acid - ethyl acrylate copolymer (1:1) type A, polyethylene glycols, polysorbate 80, polyvinylpyrrolidone, silicon dioxide, sodium lauryl sulfate, talc, titanium dioxide, triethyl citrate, film-coating material contains - FD&C Yellow #6/sunset yellow FCF aluminum lake, FD&C blue #2/Indigo carmine AL 3% to 5% and D&C Yellow #10 aluminum lake for 12.5 mg; D&C Red #30/Helendon pink aluminum lake for 25 mg and FD&C blue #2/Indigo carmine AL 3% to 5% and FD&C blue #2 Indigo

carmine aluminum lake for 37.5 mg.

All registered trademarks in this document are the property of their respective owners.

This Medication Guide has been approved by the U.S. Food and Drug Administration.

**Manufactured by:**

Cadila Pharmaceuticals Limited  
1389, Trasad Road, Dholka-382225,  
District - Ahmedabad,  
Gujarat State, INDIA.

**Manufactured for:**

Modavar Pharmaceuticals LLC.  
1016, 16th Street, Suite 602,  
Washington, DC 20036  
Toll free: 800 688 4697

Revised: April 2024

**PACKAGE LABEL.PRINCIPAL DISPLAY PANEL**

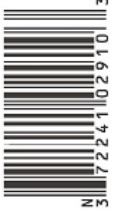
Paroxetine Extended-Release Tablets - Container Label 30 Tablets  
NDC 72241-029-22  
Paroxetine Extended-Release Tablets  
**12.5 mg**

Pharmacist: Dispense the accompanying Medication Guide to each patient.  
RX only 30 Tablets

<p><b>NDC 72241-029-22</b></p> <p><b>Paroxetine Extended-Release Tablets</b></p> <p><b>12.5 mg</b></p> <p>Pharmacist: Dispense the accompanying Medication Guide to each patient.</p> <p> <b>Modavar</b> PHARMACEUTICALS</p> <p><b>Rx only                      30 Tablets</b></p>	<p>Each film coated, extended-release tablet contains paroxetine hydrochloride USP equivalent to 12.5 mg paroxetine. Store at 20° to 25°C (68° to 77°F); excursions permitted between 15° to 30°C (59° to 86°F) [see USP Controlled Room Temperature]. <b>Dosage:</b> See accompanying prescribing information. <b>Important:</b> Use safety closures when dispensing this product unless otherwise directed by physician or requested by purchaser. Dispense contents in a light-, light-resistant container as defined in the USP with a child-resistant closure, as required. <b>KEEP TIGHTLY CLOSED.</b> <b>KEEP THIS AND ALL MEDICATIONS OUT OF THE REACH OF CHILDREN.</b> Mfg. Lic. No. : G1500 Manufactured by: <b>Cadila Pharmaceuticals Ltd.</b> 1389, Dholka-382225, Dist. Ahmedabad, Gujarat State, INDIA. Manufactured for: <b>Modavar Pharmaceuticals LLC.</b> 1016, 16th Street, Suite 602, Washington, DC 20036</p> <p> N 72241102922 6</p> <p>Issued: 06/2021 JMOETA0499</p>	<p><i>Unvarnished Area 44 x 30 mm Space for serialized datamatrix code and batch coding.</i></p>
---	---	--

Paroxetine Extended-Release Tablets - Container Label 500 Tablets  
NDC 72241-029-10  
Paroxetine Extended-Release Tablets  
**12.5 mg**

Pharmacist: Dispense the accompanying Medication Guide to each patient.  
RX only 500 Tablets

<p><b>NDC 72241-029-10</b></p> <p><b>Paroxetine Extended-Release Tablets</b></p> <p><b>12.5 mg</b></p> <p>Pharmacist: Dispense the accompanying Medication Guide to each patient.</p> <p><b>Modavar</b> PHARMACEUTICALS</p> <p>Rx only      <b>500 Tablets</b></p>	<p>Each film coated, extended-release tablet contains paroxetine hydrochloride USP equivalent to 12.5 mg paroxetine. Store at 20° to 25°C (68° to 77°F); excursions permitted between 15° to 30°C (59° to 86°F) [see USP Controlled Room Temperature].</p> <p><b>Dosage:</b> See accompanying prescribing information.</p> <p><b>Important:</b> Use safety closures when dispensing this product unless otherwise directed by physician or requested by purchaser. Dispense contents in a tight, light-resistant container as defined in the USP with a child-resistant closure, as required. <b>KEEP TIGHTLY CLOSED.</b> <b>KEEP THIS AND ALL MEDICATIONS OUT OF THE REACH OF CHILDREN.</b></p> <p>Mfg. Lic. No. : G/1500</p> <p>Manufactured by: <b>Cadila Pharmaceuticals Ltd.</b> 1389, Dholka-382225, Dist. Ahmedabad, Gujarat State, INDIA.</p> <p>Manufactured for: <b>Modavar Pharmaceuticals LLC.</b> 1016, 18th Street, Suite 602, Washington, DC 20036</p>  <p>Issued: 06/2021</p> <p>JMOETB0499</p>	<p><i>Unvarnished Area 50 x 30 mm Space for serialized datamatrix code and batch coding.</i></p>
--	--	--

Paroxetine Extended-Release Tablets - Container Label 30 Tablets

NDC 72241-030-22  
Paroxetine Extended-Release Tablets  
**25 mg**

Pharmacist: Dispense the accompanying Medication Guide to each patient.  
RX only 30 Tablets

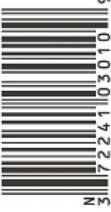
<p><b>NDC 72241-030-22</b></p> <p><b>Paroxetine Extended-Release Tablets</b></p> <p><b>25 mg</b></p> <p>Pharmacist: Dispense the accompanying Medication Guide to each patient.</p> <p><b>Modavar</b> PHARMACEUTICALS</p> <p>Rx only      <b>30 Tablets</b></p>	<p>Each film coated, extended-release tablet contains paroxetine hydrochloride USP equivalent to 25 mg paroxetine. Store at 20° to 25°C (68° to 77°F); excursions permitted between 15° to 30°C (59° to 86°F) [see USP Controlled Room Temperature].</p> <p><b>Dosage:</b> See accompanying prescribing information.</p> <p><b>Important:</b> Use safety closures when dispensing this product unless otherwise directed by physician or requested by purchaser. Dispense contents in a tight, light-resistant container as defined in the USP with a child-resistant closure, as required. <b>KEEP TIGHTLY CLOSED.</b> <b>KEEP THIS AND ALL MEDICATIONS OUT OF THE REACH OF CHILDREN.</b></p> <p>Mfg. Lic. No. : G/1500</p> <p>Manufactured by: <b>Cadila Pharmaceuticals Ltd.</b> 1389, Dholka-382225, Dist. Ahmedabad, Gujarat State, INDIA.</p> <p>Manufactured for: <b>Modavar Pharmaceuticals LLC.</b> 1016, 18th Street, Suite 602, Washington, DC 20036</p>  <p>Issued: 06/2021</p> <p>JMOETA0500</p>	<p><i>Unvarnished Area 44 x 30 mm Space for serialized datamatrix code and batch coding.</i></p>
---	---	--

Paroxetine Extended-Release Tablets - Container Label 500 Tablets

NDC 72241-030-10  
Paroxetine Extended-Release Tablets  
**25 mg**

Pharmacist: Dispense the accompanying Medication Guide to each patient.  
RX only 500 Tablets



<p><b>NDC 72241-030-10</b></p> <p><b>Paroxetine Extended-Release Tablets</b></p> <p><b>25 mg</b></p> <p>Pharmacist: Dispense the accompanying Medication Guide to each patient.</p> <p><b>Modavar</b> PHARMACEUTICALS</p> <p>Rx only      <b>500 Tablets</b></p>	<p>Each film coated, extended-release tablet contains paroxetine hydrochloride USP equivalent to 25 mg paroxetine. Store at 20° to 25°C (68° to 77°F); excursions permitted between 15° to 30°C (59° to 86°F) [see USP Controlled Room Temperature].</p> <p><b>Dosage:</b> See accompanying prescribing information.</p> <p><b>Important:</b> Use safety closures when dispensing this product unless otherwise directed by physician or requested by purchaser. Dispense contents in a tight, light-resistant container as defined in the USP with a child-resistant closure, as required. <b>KEEP TIGHTLY CLOSED.</b></p> <p><b>KEEP THIS AND ALL MEDICATIONS OUT OF THE REACH OF CHILDREN.</b></p> <p>Mfg. Lic. No. : G/1500 Manufactured by: <b>Cadila Pharmaceuticals Ltd.</b> 1389, Dholka-382225, Dist. Ahmedabad, Gujarat State, INDIA. Manufactured for: <b>Modavar Pharmaceuticals LLC.</b> 1016, 16th Street, Suite 602, Washington, DC 20036</p>  <p>Issued: 06/2021</p> <p>JMOETB0500</p>	<p><i>Unvarnished Area 50 x 30 mm Space for serialized datamatrix code and batch coding.</i></p>
--	---	--

Paroxetine Extended-Release Tablets - Container Label 30 Tablets

NDC 72241-031-22  
Paroxetine Extended-Release Tablets  
**37.5 mg**

Pharmacist: Dispense the accompanying Medication Guide to each patient.  
RX only 30 Tablets

<p><b>NDC 72241-031-22</b></p> <p><b>Paroxetine Extended-Release Tablets</b></p> <p><b>37.5 mg</b></p> <p>Pharmacist: Dispense the accompanying Medication Guide to each patient.</p> <p><b>Modavar</b> PHARMACEUTICALS</p> <p>Rx only      <b>30 Tablets</b></p>	<p>Each film coated, extended-release tablet contains paroxetine hydrochloride USP equivalent to 37.5 mg paroxetine. Store at 20° to 25°C (68° to 77°F); excursions permitted between 15° to 30°C (59° to 86°F) [see USP Controlled Room Temperature].</p> <p><b>Dosage:</b> See accompanying prescribing information.</p> <p><b>Important:</b> Use safety closures when dispensing this product unless otherwise directed by physician or requested by purchaser. Dispense contents in a tight, light-resistant container as defined in the USP with a child-resistant closure, as required. <b>KEEP TIGHTLY CLOSED.</b></p> <p><b>KEEP THIS AND ALL MEDICATIONS OUT OF THE REACH OF CHILDREN.</b></p> <p>Mfg. Lic. No. : G/1500 Manufactured by: <b>Cadila Pharmaceuticals Ltd.</b> 1389, Dholka-382225, Dist. Ahmedabad, Gujarat State, INDIA. Manufactured for: <b>Modavar Pharmaceuticals LLC.</b> 1016, 16th Street, Suite 602, Washington, DC 20036</p>  <p>Issued: 06/2021</p> <p>JMOETA0501</p>	<p><i>Unvarnished Area 44 x 30 mm Space for serialized datamatrix code and batch coding.</i></p>
---	--	--

Paroxetine Extended-Release Tablets - Container Label 500 Tablets

NDC 72241-031-10  
Paroxetine Extended-Release Tablets  
**37.5 mg**

Pharmacist: Dispense the accompanying Medication Guide to each patient.  
RX only 500 Tablets

<p>NDC 72241-031-10</p> <p><b>Paroxetine Extended-Release Tablets</b></p> <p><b>37.5 mg</b></p> <p>Pharmacist: Dispense the accompanying Medication Guide to each patient.</p> <p><b>Modavar</b> PHARMACEUTICALS</p> <p>Rx only      500 Tablets</p>	<p>Each film coated, extended-release tablet contains paroxetine hydrochloride USP equivalent to 37.5 mg paroxetine. Store at 20° to 25°C (68° to 77°F); excursions permitted between 15° to 30°C (59° to 86°F) [see USP Controlled Room Temperature].</p> <p><b>Dosage:</b> See accompanying prescribing information.</p> <p><b>Important:</b> Use safety closures when dispensing this product unless otherwise directed by physician or requested by purchaser. Dispense contents in a tight, light-resistant container as defined in the USP with a child-resistant closure, as required. KEEP TIGHTLY CLOSED. KEEP THIS AND ALL MEDICATIONS OUT OF THE REACH OF CHILDREN.</p> <p>Mfg. Lic. No. : G/1500</p> <p>Manufactured by: <b>Cadila Pharmaceuticals Ltd.</b> 1389, Dholka-382225, Dist. Ahmedabad, Gujarat State, INDIA.</p> <p>Manufactured for: <b>Modavar Pharmaceuticals LLC.</b> 1016, 16th Street, Suite 602, Washington, DC 20036</p>	 <p>Issued: 06/2021</p> <p>JMOETB0501</p>	<p><i>Unvarnished Area 50 x 30 mm Space for serialized datamatrix code and batch coding.</i></p>
--	---	--	--

## PAROXETINE

paroxetine tablet, film coated, extended release

### Product Information

<b>Product Type</b>	HUMAN PRESCRIPTION DRUG	<b>Item Code (Source)</b>	NDC:72241-029
<b>Route of Administration</b>	ORAL		

### Active Ingredient/Active Moiety

Ingredient Name	Basis of Strength	Strength
<b>PAROXETINE HYDROCHLORIDE HEMIHYDRATE</b> (UNII: X2ELS050D8) (PAROXETINE - UNII:41VRH5220H)	PAROXETINE	12.5 mg

### Inactive Ingredients

Ingredient Name	Strength
<b>FERRIC OXIDE YELLOW</b> (UNII: EX43802MRT)	
<b>GLYCERYL DIBEHENATE</b> (UNII: R8WTH25YS2)	
<b>LACTOSE MONOHYDRATE</b> (UNII: EWQ57Q8I5X)	
<b>MAGNESIUM STEARATE</b> (UNII: 70097M6I30)	
<b>POLYSORBATE 80</b> (UNII: 6OZP39ZG8H)	
<b>SILICON DIOXIDE</b> (UNII: ETJ7Z6XBU4)	
<b>SODIUM LAURYL SULFATE</b> (UNII: 368GB5141J)	
<b>TALC</b> (UNII: 7SEV7J4R1U)	
<b>TITANIUM DIOXIDE</b> (UNII: 15FIX9V2JP)	
<b>TRIETHYL CITRATE</b> (UNII: 8Z96QXD6UM)	
<b>METHACRYLIC ACID - ETHYL ACRYLATE COPOLYMER (1:1) TYPE A</b> (UNII: NX76LV5T8J)	
<b>POVIDONE K30</b> (UNII: U725QWY32X)	
<b>POLYETHYLENE GLYCOL, UNSPECIFIED</b> (UNII: 3WJQ0SDW1A)	
<b>HYPROMELLOSES</b> (UNII: 3NXW29V3WO)	

### Product Characteristics

<b>Color</b>	YELLOW	<b>Score</b>	no score
<b>Shape</b>	ROUND	<b>Size</b>	7mm
<b>Flavor</b>		<b>Imprint Code</b>	X1
<b>Contains</b>			

### Packaging

#	Item Code	Package Description	Marketing Start Date	Marketing End Date
1	NDC:72241-029-22	30 in 1 BOTTLE; Type 0: Not a Combination Product	10/20/2021	
2	NDC:72241-029-10	500 in 1 BOTTLE; Type 0: Not a Combination Product	10/20/2021	

## Marketing Information

Marketing Category	Application Number or Monograph Citation	Marketing Start Date	Marketing End Date
ANDA	ANDA212645	10/20/2021	

## PAROXETINE

paroxetine tablet, film coated, extended release

### Product Information

Product Type	HUMAN PRESCRIPTION DRUG	Item Code (Source)	NDC:72241-030
Route of Administration	ORAL		

### Active Ingredient/Active Moiety

Ingredient Name	Basis of Strength	Strength
PAROXETINE HYDROCHLORIDE HEMIHYDRATE (UNII: X2ELS050D8) (PAROXETINE - UNII:41VRH5220H)	PAROXETINE	25 mg

### Inactive Ingredients

Ingredient Name	Strength
FERRIC OXIDE YELLOW (UNII: EX438O2MRT)	
GLYCERYL DIBEHENATE (UNII: R8WTH25YS2)	
LACTOSE MONOHYDRATE (UNII: EWQ57Q8I5X)	
MAGNESIUM STEARATE (UNII: 70097M6I30)	
POLYSORBATE 80 (UNII: 6OZP39ZG8H)	
SILICON DIOXIDE (UNII: ETJ7Z6XBU4)	
SODIUM LAURYL SULFATE (UNII: 368GB5141J)	
TALC (UNII: 7SEV7J4R1U)	
TITANIUM DIOXIDE (UNII: 15FIX9V2JP)	
TRIETHYL CITRATE (UNII: 8Z96QXD6UM)	
METHACRYLIC ACID - ETHYL ACRYLATE COPOLYMER (1:1) TYPE A (UNII: NX76LV5T8J)	
POVIDONE K30 (UNII: U725QWW32X)	
POLYETHYLENE GLYCOL, UNSPECIFIED (UNII: 3WJQ05DW1A)	
HYPROMELLOSES (UNII: 3NXW29V3WO)	

### Product Characteristics

Color	PINK	Score	no score
Shape	ROUND	Size	7mm
Flavor		Imprint Code	X2
Contains			

### Packaging

#	Item Code	Package Description	Marketing Start Date	Marketing End Date
1	NDC:72241-030-22	30 in 1 BOTTLE; Type 0: Not a Combination Product	10/20/2021	
2	NDC:72241-030-10	500 in 1 BOTTLE; Type 0: Not a Combination Product	10/20/2021	

## Marketing Information

Marketing Category	Application Number or Monograph Citation	Marketing Start Date	Marketing End Date
ANDA	ANDA212645	10/20/2021	

## PAROXETINE

paroxetine tablet, film coated, extended release

Product Information				
Product Type	HUMAN PRESCRIPTION DRUG	Item Code (Source)	NDC:72241-031	
Route of Administration	ORAL			
Active Ingredient/Active Moiety				
Ingredient Name	Basis of Strength	Strength		
PAROXETINE HYDROCHLORIDE HEMIHYDRATE (UNII: X2ELS050D8) (PAROXETINE - UNII:41VRH5220H)	PAROXETINE	37.5 mg		
Inactive Ingredients				
Ingredient Name	Strength			
FERRIC OXIDE YELLOW (UNII: EX43802MRT)				
GLYCERYL DIBEHENATE (UNII: R8WTH25YS2)				
LACTOSE MONOHYDRATE (UNII: EWQ57Q8I5X)				
MAGNESIUM STEARATE (UNII: 70097M6I30)				
POLYSORBATE 80 (UNII: 6OZP39ZG8H)				
SILICON DIOXIDE (UNII: ETJ7Z6XBU4)				
SODIUM LAURYL SULFATE (UNII: 368GB5141J)				
TALC (UNII: 75EV7J4R1U)				
TITANIUM DIOXIDE (UNII: 15FIX9V2JP)				
TRIETHYL CITRATE (UNII: 8Z96QXD6UM)				
METHACRYLIC ACID - ETHYL ACRYLATE COPOLYMER (1:1) TYPE A (UNII: NX76LV5T8J)				
POVIDONE K30 (UNII: U725QWY32X)				
POLYETHYLENE GLYCOL, UNSPECIFIED (UNII: 3WJQ0SDW1A)				
HYPROMELLOSES (UNII: 3NXW29V3WO)				
Product Characteristics				
Color	BLUE	Score	no score	
Shape	ROUND	Size	8mm	
Flavor		Imprint Code	X3	
Contains				
Packaging				
#	Item Code	Package Description	Marketing Start Date	Marketing End Date
1	NDC:72241-031-22	30 in 1 BOTTLE; Type 0: Not a Combination Product	10/20/2021	
2	NDC:72241-031-10	500 in 1 BOTTLE; Type 0: Not a Combination Product	10/20/2021	
Marketing Information				
Marketing Category	Application Number or Monograph Citation	Marketing Start Date	Marketing End Date	
ANDA	ANDA212645	10/20/2021		

**Labeler** - Modavar Pharmaceuticals LLC (858949204)

### Establishment

Name	Address	ID/FEI	Business Operations
Cadila Pharmaceuticals Limited		918451696	ANALYSIS(72241-029, 72241-030, 72241-031) , LABEL(72241-029, 72241-030, 72241-031) , MANUFACTURE(72241-029, 72241-030, 72241-031) , PACK(72241-029, 72241-030, 72241-031)

Revised: 4/2024

Modavar Pharmaceuticals LLC