

CLOBETASOL PROPIONATE EMOLLIENT FORMULATION- clobetasol propionate aerosol, foam
Perrigo New York Inc

HIGHLIGHTS OF PRESCRIBING INFORMATION

These highlights do not include all the information needed to use CLOBETASOL PROPIONATE FOAM, (EMULSION) safely and effectively. See full prescribing information for CLOBETASOL PROPIONATE FOAM (EMULSION).

CLOBETASOL PROPIONATE foam (emollient formulation) 0.05%
For topical use

Initial U.S. Approval: 1985

----- **RECENT MAJOR CHANGES** -----

Warnings and Precautions, *Ophthalmic Adverse Reactions* (5.3) 05/2018

----- **INDICATIONS AND USAGE** -----

- Clobetasol Propionate Foam, 0.05% (Emulsion) is a corticosteroid indicated for the treatment of inflammatory and pruritic manifestations of corticosteroid-responsive dermatoses in patients 12 years and older. (1.1)

----- **DOSAGE AND ADMINISTRATION** -----

Clobetasol Propionate Foam, 0.05% (Emulsion) is not for oral, ophthalmic, or intravaginal use. (2)

- Apply Clobetasol Propionate Foam, 0.05% (Emulsion) to the affected area(s) twice daily, morning and evening, for up to 2 consecutive weeks. The maximum weekly dose should not exceed 50 g. (2)
- Avoid use on face, axilla, and groin, or if skin atrophy is present at the treatment site. (2)

----- **DOSAGE FORMS AND STRENGTHS** -----

Foam, 0.05%. (3)

----- **CONTRAINDICATIONS** -----

None. (4)

----- **WARNINGS AND PRECAUTIONS** -----

- Clobetasol Propionate Foam, 0.05% (Emulsion) has been shown to suppress the HPA axis. Systemic absorption of Clobetasol Propionate Foam, 0.05% (Emulsion) may produce reversible HPA axis suppression, Cushing's syndrome, hyperglycemia, and unmask latent diabetes. (5.1)
- Because of the potential for systemic absorption, use of topical corticosteroids may require that patients be periodically evaluated for HPA axis suppression. (5.1)
- Modify use should HPA axis suppression develop. (5.1)
- High potency corticosteroids, large treatment surface areas, prolonged use, use of occlusive dressings, altered skin barrier, and liver failure may predispose patients to HPA axis suppression. (5.1)
- May increase the risk of cataract and glaucoma. If visual symptoms occur, consider referral to an ophthalmologist for evaluation. (5.3)
- Pediatric patients may be more susceptible to systemic toxicity when treated with topical corticosteroids. (5.1, 8.4)
- The propellant in Clobetasol Propionate Foam, 0.05% (Emulsion) is flammable. Avoid fire, flame, or smoking during and immediately following application. (5.5)

----- **ADVERSE REACTIONS** -----

- The most common adverse reactions (incidence \geq 1%) are application site atrophy and application site reaction. (6.1)

To report SUSPECTED ADVERSE REACTIONS, contact Perrigo at 1-866-634-9120 or FDA at 1-800-FDA-1088 or www.fda.gov/medwatch. (6)

See 17 for PATIENT COUNSELING INFORMATION and FDA-approved patient labeling. (6)

Revised: 08/2018 (6)

See 17 for PATIENT COUNSELING INFORMATION.

Revised: 9/2019

FULL PRESCRIBING INFORMATION: CONTENTS*

1 INDICATIONS AND USAGE

2 DOSAGE AND ADMINISTRATION

3 DOSAGE FORMS AND STRENGTHS

4 CONTRAINDICATIONS

5 WARNINGS AND PRECAUTIONS

5.1 Effects on Endocrine System

5.2 Local Adverse Reactions with Topical Corticosteroids

5.3 Ophthalmic Adverse Reactions

5.4 Concomitant Skin Infections

5.5 Flammable Contents

6 ADVERSE REACTIONS

6.1 Clinical Trials Experience

6.2 Postmarketing Experience

8 USE IN SPECIFIC POPULATIONS

8.1 Pregnancy

8.2 Lactation

8.4 Pediatric Use

8.5 Geriatric Use

10 OVERDOSAGE

11 DESCRIPTION

12 CLINICAL PHARMACOLOGY

12.1 Mechanism of Action

12.2 Pharmacodynamics

12.3 Pharmacokinetics

13 NONCLINICAL TOXICOLOGY

13.1 Carcinogenesis, Mutagenesis, Impairment of Fertility

14 CLINICAL STUDIES

16 HOW SUPPLIED/STORAGE AND HANDLING

16.1 How Supplied

16.2 Storage and Handling

17 PATIENT COUNSELING INFORMATION

* Sections or subsections omitted from the full prescribing information are not listed.

FULL PRESCRIBING INFORMATION

1 INDICATIONS AND USAGE

Clobetasol Propionate Foam, 0.05% (Emulsion) is indicated for the treatment of inflammatory and pruritic manifestations of corticosteroid-responsive dermatoses in patients 12 years and older.

2 DOSAGE AND ADMINISTRATION

- Apply a thin layer of Clobetasol Propionate Foam, 0.05% (Emulsion) to the affected area(s) twice daily, morning and evening, for up to 2 consecutive weeks; therapy should be discontinued when control has been achieved.

- The maximum weekly dose should not exceed 50 g or an amount greater than 21 capfuls per week.
- For proper dispensing of foam, shake the can, hold it upside down, and depress the actuator.
- Dispense a small amount of foam (about a capful) and gently massage the medication into the affected areas (excluding the face, groin, and axillae) until the foam is absorbed.
- Clobetasol Propionate Foam, 0.05% (Emulsion) is not for oral, ophthalmic, or intravaginal use.
- Avoid contact with the eyes.
- Avoid use on face, axillae, and groin, or if skin atrophy is present at the treatment site.
- Wash hands after each application.

3 DOSAGE FORMS AND STRENGTHS

Clobetasol Propionate Foam, 0.05% (Emulsion) contains 0.5 mg of clobetasol propionate, USP per gram.

4 CONTRAINDICATIONS

None.

5 WARNINGS AND PRECAUTIONS

5.1 Effects on Endocrine System

Clobetasol propionate foam, 0.05% (emulsion) has been shown to suppress the hypothalamic-pituitary-adrenal (HPA) axis.

Systemic absorption of clobetasol propionate foam, 0.05% (emulsion) has caused reversible HPA axis suppression with the potential for clinical glucocorticoid insufficiency. This may occur during treatment or upon withdrawal of the topical corticosteroid. Use of clobetasol propionate foam, 0.05% (emulsion) for longer than 2 weeks may suppress the immune system [see *Nonclinical Toxicology (13.1)*].

In a trial including 37 subjects 12 years and older with atopic dermatitis of at least 30% body surface area (BSA), adrenal suppression was identified in 6 out of 37 subjects (16.2%) after 2 weeks of treatment with clobetasol propionate foam, 0.05% (emulsion) [see *Clinical Pharmacology (12.2)*].

Because of the potential for systemic absorption, use of clobetasol propionate foam, 0.05% (emulsion) may require that patients be periodically evaluated for HPA axis suppression. Factors that predispose a patient using a topical corticosteroid to HPA axis suppression include the use of more potent steroids, use over large surface areas, use over prolonged periods, use under occlusion, use on an altered skin barrier, and use in patients with liver failure.

An adrenocorticotrophic hormone (ACTH) stimulation test may be helpful in evaluating patients for HPA axis suppression. If HPA axis suppression is documented, an attempt should be made to gradually withdraw the drug, to reduce the frequency of application, or to substitute a less potent steroid. Manifestations of adrenal insufficiency may require systemic corticosteroids. Recovery of HPA axis function is generally prompt and complete upon discontinuation of topical corticosteroids.

Cushing's syndrome, hyperglycemia, and unmasking of latent diabetes mellitus can also result from systemic absorption of topical corticosteroids.

Use of more than 1 corticosteroid-containing product at the same time may increase the total systemic corticosteroid exposure.

Pediatric patients may be more susceptible to systemic toxicity from equivalent doses because of their larger skin surface-to-body mass ratios [see *Use in Specific Populations (8.4)*].

5.2 Local Adverse Reactions with Topical Corticosteroids

Local adverse reactions may be more likely to occur with occlusive use, prolonged use, or use of higher potency corticosteroids. Reactions may include atrophy, striae, telangiectasias, burning, itching, irritation, dryness, folliculitis, acneiform eruptions, hypopigmentation, perioral dermatitis, allergic contact dermatitis, secondary infection, and miliaria. Some local adverse reactions may be irreversible.

Allergic contact dermatitis to any component of topical corticosteroids is usually diagnosed by a failure to heal rather than a clinical exacerbation. Clinical diagnosis of allergic contact dermatitis can be confirmed by patch testing.

If irritation develops, treatment with Clobetasol Propionate Foam, 0.05% (Emulsion) should be discontinued and appropriate therapy instituted.

5.3 Ophthalmic Adverse Reactions

Use of topical corticosteroids, including Clobetasol Propionate Foam, 0.05% (Emulsion), may increase the risk of posterior subcapsular cataracts and glaucoma. Cataracts and glaucoma have been reported postmarketing with the use of topical corticosteroids, including topical clobetasol products [see *Adverse Reactions (6.2)*].

Avoid contact of Clobetasol Propionate Foam, 0.05% (Emulsion) with eyes. Advise patients to report any visual symptoms and consider referral to an ophthalmologist for evaluation.

5.4 Concomitant Skin Infections

Concomitant skin infections should be treated with an appropriate antimicrobial agent. If the infection persists, Clobetasol Propionate Foam, 0.05% (Emulsion) should be discontinued until the infection has been adequately treated.

5.5 Flammable Contents

The propellant in Clobetasol Propionate Foam, 0.05% (Emulsion) is flammable. Avoid fire, flame, or smoking during and immediately following application. Do not puncture and/or incinerate the containers. Do not expose containers to heat and/or store at temperatures above 120°F (49°C).

6 ADVERSE REACTIONS

The following adverse reactions are discussed in greater detail in other sections of the labeling:

- Effects on Endocrine System [see *Warnings and Precautions (5.1)*]
- Ophthalmic Adverse Reactions [see *Warnings and Precautions (5.3)*]

6.1 Clinical Trials Experience

Because clinical trials are conducted under widely varying conditions, adverse reaction rates observed in the clinical trials of a drug cannot be directly compared to rates in the clinical trials of another drug and may not reflect the rates observed in clinical practice.

In controlled clinical trials involving 821 subjects exposed to clobetasol propionate foam, 0.05% (emulsion) and vehicle foam, the pooled incidence of local adverse reactions in trials for atopic dermatitis and psoriasis with clobetasol propionate foam, 0.05% (emulsion) was 1.9% for application site atrophy and 1.6% for application site reaction. Most local adverse events were rated as mild to moderate and they were not affected by age, race, or gender.

6.2 Postmarketing Experience

Because these reactions are reported voluntarily from a population of uncertain size, it is not always possible to reliably estimate their frequency or establish a causal relationship to drug exposure.

The following adverse reactions have been identified during post-approval use of clobetasol

formulations: erythema, pruritus, burning, alopecia, and dryness.

The following additional local adverse reactions have been reported with topical corticosteroids: folliculitis, acneiform eruptions, hypopigmentation, perioral dermatitis, allergic contact dermatitis, secondary infection, irritation, striae, and miliaria. They may occur more frequently with the use of occlusive dressings and higher potency corticosteroids, such as clobetasol propionate.

Cushing's syndrome has been reported in infants and adults as a result of prolonged use of topical clobetasol propionate formulations.

Ophthalmic adverse reactions may include cataracts, glaucoma, increased intraocular pressure, and central serous chorioretinopathy.

8 USE IN SPECIFIC POPULATIONS

8.1 Pregnancy

Risk Summary

There are no available data on Clobetasol Propionate Foam, 0.05% (Emulsion) use in pregnant women to inform of a drug associated risk for adverse developmental outcomes.

Published data report a significantly increased risk of low birth weight with the use of greater than 300 grams of potent or very potent topical corticosteroid during a pregnancy. Advise pregnant women of the potential risk to a fetus and to use Clobetasol Propionate Foam, 0.05% (Emulsion) on the smallest area of skin and for the shortest duration possible (*see Data*).

In animal reproduction studies, increased malformations, such as cleft palate and skeletal abnormalities, were observed after subcutaneous administration of clobetasol propionate to pregnant mice and rabbits. No comparison of animal exposure with human exposure was computed.

The background risk of major birth defects and miscarriage for the indicated population is unknown. All pregnancies have a background risk of birth defect, loss, or other adverse outcomes. In the U.S. general population, the estimated background risk of major birth defects and miscarriage in clinically recognized pregnancies is 2 to 4% and 15 to 20%, respectively.

Data

Human Data

Multiple observational studies found no significant associations between maternal use of topical corticosteroids of any potency and congenital malformations, preterm delivery, or fetal mortality. However, when the dispensed amount of potent or very potent topical corticosteroid exceeded 300 g during the entire pregnancy, use was associated with an increase in low birth weight infants (adjusted RR, 7.74 [95% CI, 1.49–40.11]). In addition, a small cohort study, in which 28 sub-Saharan women using potent topical corticosteroids (27/28 used clobetasol propionate 0.05%) for skin lightening during pregnancy, noted a higher incidence of low birth weight infants in the exposed group. The majority of exposed subjects treated large areas of the body (a mean quantity of 60 g/month [range, 12–170 g]) over long periods of time.

Animal Data

Embryofetal development studies conducted with clobetasol propionate in mice using the subcutaneous route resulted in fetotoxicity at the highest dose tested (1 mg/kg) and malformations at all dose levels tested down to 0.03 mg/kg. Malformations seen included cleft palate and skeletal abnormalities.

In an embryofetal development study in rabbits, subcutaneous administration of clobetasol propionate resulted in malformations at doses of 0.003 and 0.01 mg/kg. Malformations seen included cleft palate, cranioschisis, and other skeletal abnormalities.

8.2 Lactation

Risk Summary

There is no information regarding the presence of clobetasol propionate in breast milk or its effects on the breastfed infant or on milk production. Systemically administered corticosteroids appear in human milk and could suppress growth, interfere with endogenous corticosteroid production, or cause other untoward effects. It is not known whether topical administration of clobetasol propionate could result in sufficient systemic absorption to produce detectable quantities in human milk. The developmental and health benefits of breastfeeding should be considered along with the mother's clinical need for Clobetasol Propionate Foam, 0.05% (Emulsion) and any potential adverse effects on the breastfed infant from Clobetasol Propionate Foam, 0.05% (Emulsion) or from the underlying maternal condition.

Clinical Considerations

To minimize potential exposure to the breastfed infant via breast milk, use Clobetasol Propionate Foam, 0.05% (Emulsion) on the smallest area of skin and for the shortest duration possible while breastfeeding. Advise breastfeeding women not to apply Clobetasol Propionate Foam, 0.05% (Emulsion) directly to the nipple and areola to avoid direct infant exposure.

8.4 Pediatric Use

Use in pediatric patients younger than 12 years is not recommended because of the risk of HPA axis suppression.

After two weeks of twice-daily treatment with clobetasol propionate foam, 0.05% (emulsion), 7 of 15 subjects (47%) aged 6 to 11 years demonstrated HPA axis suppression. The laboratory suppression was transient; in all subjects serum cortisol levels returned to normal when tested 4 weeks post-treatment.

In 92 subjects aged 12 to 17 years, safety was similar to that observed in the adult population. Based on these data, no adjustment of dosage of Clobetasol Propionate Foam, 0.05% (Emulsion) in adolescent patients aged 12 to 17 years is warranted [*see Warnings and Precautions (5.1)*].

Because of a higher ratio of skin surface area to body mass, pediatric patients are at a greater risk than adults of HPA axis suppression and Cushing's syndrome when they are treated with topical corticosteroids. They are therefore also at greater risk of adrenal insufficiency during and/or after withdrawal of treatment.

HPA axis suppression, Cushing's syndrome, linear growth retardation, delayed weight gain, and intracranial hypertension have been reported in children receiving topical corticosteroids. Manifestations of adrenal suppression in children include low plasma cortisol levels and an absence of response to ACTH stimulation. Manifestations of intracranial hypertension include bulging fontanelles (in infants), headaches, and bilateral papilledema. Administration of topical corticosteroids to children should be limited to the least amount compatible with an effective therapeutic regimen. Chronic corticosteroid therapy may interfere with the growth and development of children.

Adverse effects, including striae, have been reported with inappropriate use of topical corticosteroids in infants and children.

8.5 Geriatric Use

A limited number of subjects aged 65 years or older have been treated with clobetasol propionate foam, 0.05% (emulsion) (n = 58) in US clinical trials. While the number of subjects is too small to permit separate analysis of efficacy and safety, the adverse reactions reported in this population were similar to those reported by younger subjects. Based on available data, no adjustment of dosage of Clobetasol Propionate Foam, 0.05% (Emulsion) in geriatric patients is warranted.

10 OVERDOSAGE

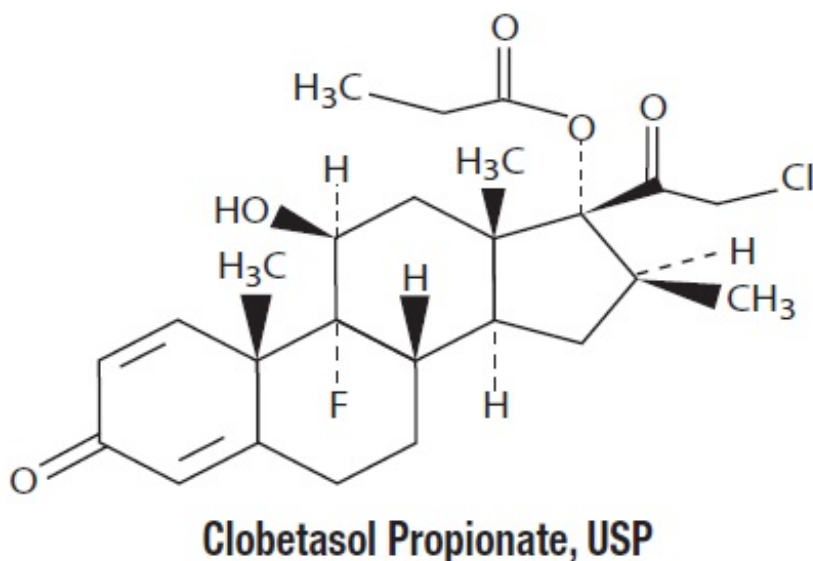
Topically applied Clobetasol Propionate Foam, 0.05% (Emulsion) can be absorbed in sufficient amounts to produce systemic effects.

11 DESCRIPTION

Clobetasol Propionate Foam, 0.05% (Emulsion) is a white to off-white petrolatum-based emulsion aerosol foam containing the active ingredient clobetasol propionate, USP, a synthetic corticosteroid for topical dermatologic use. Clobetasol, an analog of prednisolone, has a high degree of glucocorticoid activity and a slight degree of mineralocorticoid activity.

Clobetasol propionate is 21-chloro-9-fluoro-11 β ,17-dihydroxy-16 β -methylpregna-1,4-diene-3,20-dione 17-propionate, with the empirical formula $C_{25}H_{32}ClF_2O_5$, and a molecular weight of 466.97.

The following is the chemical structure:



Clobetasol propionate is a white to almost white crystalline powder, practically insoluble in water.

Each gram of Clobetasol Propionate Foam, 0.05% (Emulsion) contains 0.5 mg clobetasol propionate, USP. The foam also contains anhydrous citric acid, cetyl alcohol, cyclomethicone, glycerin, isopropyl myristate, polyoxyl 20 cetostearyl ether, potassium citrate monohydrate, propylene glycol, purified water, sorbitan monolaurate, and phenoxyethanol as a preservative.

Clobetasol Propionate Foam, 0.05% (Emulsion) is dispensed from an aluminum can pressurized with a hydrocarbon (propane/butane) propellant.

12 CLINICAL PHARMACOLOGY

12.1 Mechanism of Action

Corticosteroids play a role in cellular signaling, immune function, inflammation, and protein regulation; however, the precise mechanism of action in corticosteroid-responsive dermatoses is unknown.

12.2 Pharmacodynamics

In a trial evaluating the potential for HPA axis suppression using the cosyntropin stimulation test, clobetasol propionate foam, 0.05% (emulsion) demonstrated reversible adrenal suppression after two weeks of twice-daily use in subjects with atopic dermatitis of at least 30% body surface area (BSA). The proportion of subjects aged 12 years and older demonstrating HPA axis suppression was 16.2% (6

out of 37). In this trial HPA axis suppression was defined as serum cortisol level ≤ 18 mcg/dL 30 minutes post cosyntropin stimulation. The laboratory suppression was transient; in all subjects serum cortisol levels returned to normal when tested 4 weeks post treatment. [see *Warnings and Precautions (5.1)*, *Use In Specific Populations (8.4)*].

12.3 Pharmacokinetics

Topical corticosteroids can be absorbed from intact healthy skin. The extent of percutaneous absorption of topical corticosteroids is determined by many factors, including the product formulation and the integrity of the epidermal barrier. Occlusion, inflammation, and/or other disease processes in the skin may increase percutaneous absorption. The use of pharmacodynamic endpoints for assessing the systemic exposure of topical corticosteroids may be necessary due to the fact that circulating levels are often below the level of detection. Once absorbed through the skin, topical corticosteroids are metabolized primarily in the liver and are then excreted by the kidneys. Some corticosteroids and their metabolites are also excreted in the bile.

Following twice-daily application of clobetasol propionate foam, 0.05% (emulsion) for one week to 32 adult subjects with mild to moderate plaque-type psoriasis, mean peak plasma concentrations (\pm SD) of 59 ± 36 pg/mL of clobetasol were observed at around 5 hours post dose on Day 8.

13 NONCLINICAL TOXICOLOGY

13.1 Carcinogenesis, Mutagenesis, Impairment of Fertility

Long-term animal studies have not been performed to evaluate the carcinogenic potential of clobetasol propionate foam, 0.05% (emulsion) or clobetasol propionate.

In a 90-day repeat-dose toxicity study in rats, topical administration of clobetasol propionate foam, 0.05% (emulsion) at dose concentrations from 0.001% to 0.1% or from 0.03 to 0.3 mg/kg/day of clobetasol propionate resulted in a toxicity profile consistent with long-term exposure to corticosteroids including adrenal atrophy, histopathological changes in several organ systems indicative of severe immune suppression and opportunistic fungal and bacterial infections. A no observable adverse effect level could not be determined in this study. Although the clinical relevance of the findings in animals to humans is not clear, sustained glucocorticoid-related immune suppression may increase the risk of infection and possibly the risk for carcinogenesis.

Clobetasol propionate was non-mutagenic in the Ames test, the mouse lymphoma test, the *Saccharomyces cerevisiae* gene conversion assay, and the *E. coli* B WP2 fluctuation test. In the *in vivo* mouse micronucleus test, a positive finding was observed at 24 hours, but not at 48 hours, following oral administration at a dose of 2,000 mg/kg.

Studies in the rat following subcutaneous administration of clobetasol propionate at dosage levels up to 0.05 mg/kg per day revealed that the females exhibited an increase in the number of resorbed embryos and a decrease in the number of living fetuses at the highest dose.

14 CLINICAL STUDIES

In a randomized trial of subjects 12 years and older with moderate to severe atopic dermatitis, 251 subjects were treated with clobetasol propionate foam, 0.05% (emulsion) and 126 subjects were treated with vehicle foam. Subjects were treated twice daily for 2 weeks. At the end of treatment, 131 of 251 subjects (52%) treated with clobetasol propionate foam, 0.05% (emulsion) compared with 18 of 126 subjects (14%) treated with vehicle foam achieved treatment success. Treatment success was defined by an Investigator's Static Global Assessment (ISGA) score of clear (0) or almost clear (1) with at least 2 grades improvement from baseline, and scores of absent or minimal (0 or 1) for erythema and induration/papulation.

In an additional randomized trial of subjects 12 years and older with mild to moderate plaque-type psoriasis, 253 subjects were treated with clobetasol propionate foam, 0.05% (emulsion) and 123 subjects were treated with vehicle foam. Subjects were treated twice daily for 2 weeks. At the end of treatment, 41 of 253 subjects (16%) treated with clobetasol propionate foam, 0.05% (emulsion) compared with 5 of 123 subjects (4%) treated with vehicle foam achieved treatment success. Treatment success was defined by an ISGA score of clear (0) or almost clear (1) with at least 2 grades improvement from baseline, scores of none or faint/minimal (0 or 1) for erythema and scaling, and a score of none (0) for plaque thickness.

16 HOW SUPPLIED/STORAGE AND HANDLING

16.1 How Supplied

Clobetasol Propionate Foam, 0.05% (Emulsion) contains 0.5 mg of clobetasol propionate, USP per gram.

The white emulsion aerosol foam is available as follows:

- 50 g aluminum can NDC 45802-**637**-32
- 100 g aluminum can NDC 45802-**637**-33

16.2 Storage and Handling

Store at 20° to 25°C (68° to 77°F) [see USP Controlled Room Temperature].

FLAMMABLE. AVOID FIRE, FLAME, OR SMOKING DURING AND IMMEDIATELY FOLLOWING APPLICATION. Contents under pressure. Do not puncture or incinerate. Do not expose to heat or store at temperatures above 120°F (49°C).

Keep out of reach of children.

17 PATIENT COUNSELING INFORMATION

See FDA-Approved Patient Labeling (Patient Information)

Effects on Endocrine System

Clobetasol Propionate Foam, 0.05% (Emulsion) may cause HPA axis suppression. Advise patients that use of topical corticosteroids, including Clobetasol Propionate Foam, 0.05% (Emulsion), may require periodic evaluation for HPA axis suppression. Topical corticosteroids may have other endocrine effects. Concomitant use of multiple corticosteroid-containing products may increase the total systemic exposure to topical corticosteroids. Patients should inform their physician(s) that they are using Clobetasol Propionate Foam, 0.05% (Emulsion) if surgery is contemplated [*see Warnings and Precautions (5.1)*].

Ophthalmic Adverse Reactions

Advise patients to report any visual symptoms to their healthcare providers [*see Warnings and Precautions (5.3)*].

Local Adverse Reactions

Report any signs of local adverse reactions to the physician. Advise patients that local reactions and skin atrophy are more likely to occur with occlusive use or prolonged use [*see Warnings and Precautions (5.2)*].

Pregnancy

Advise a pregnant woman that use of Clobetasol Propionate Foam, 0.05% (Emulsion) may cause fetal harm and to use Clobetasol Propionate Foam, 0.05% (Emulsion) on the smallest area of skin and for the

shortest duration possible [*see Use in Specific Populations (8.1)*].

Lactation

Advise a woman to use Clobetasol Propionate Foam, 0.05% (Emulsion) on the smallest area of skin and for the shortest duration possible while breastfeeding. Advise breastfeeding women not to apply Clobetasol Propionate Foam, 0.05% (Emulsion) directly to the nipple and areola to avoid direct infant exposure [*see Use in Specific Populations (8.2)*].

Important Administration Instructions

Patients using topical corticosteroids should receive the following information and instructions:

- This medication is to be used as directed by the physician. It is for external use only. Unless directed by the prescriber, it should not be used on the face, or in skin-fold areas, such as the underarms or groin. Avoid contact with the eyes or other mucous membranes. Wash hands after use.
- As with other corticosteroids, therapy should be discontinued when control is achieved. If no improvement is seen within 2 weeks, contact the physician.
- Do not use for more than 50 grams per week of Clobetasol Propionate Foam, 0.05% (Emulsion), or an amount greater than 21 capfuls per week [*see Dosage and Administration (2)*].
- This medication is flammable; avoid heat, flame, or smoking when applying this product.

Rx Only

Made in Israel

Manufactured By Perrigo

Yeruham, Israel

Distributed By

Perrigo®

Allegan, MI 49010 • www.perrigo.com

Rev 08-18

6C700 RC J3

PATIENT INFORMATION

Clobetasol Propionate Foam, 0.05% (Emulsion)

IMPORTANT: For skin use only. Do not get Clobetasol Propionate Foam, 0.05% (Emulsion) in your eyes, mouth, or vagina.

What is Clobetasol Propionate Foam, 0.05% (Emulsion)?

Clobetasol Propionate Foam, 0.05% (Emulsion) is a prescription corticosteroid medicine used on the skin (topical) to treat people 12 years of age and older with certain skin conditions that cause red, flaky, and itchy skin.

Clobetasol Propionate Foam, 0.05% (Emulsion) is not recommended for use in children under 12 years of age.

Clobetasol Propionate Foam, 0.05% (Emulsion) should not be used:

- on your face, underarms, or groin area.
- if you have skin thinning (atrophy) at the treatment area.

You should not use Clobetasol Propionate Foam, 0.05% (Emulsion) for longer than 2 weeks in a row.

You should not use more than 50 grams or 21 capfuls of Clobetasol Propionate Foam, 0.05% (Emulsion) in 1 week.

Before using Clobetasol Propionate Foam, 0.05% (Emulsion), tell your healthcare provider about all of your medical conditions, including if you:

- have had irritation or other skin reaction to a steroid medicine in the past.
- have a skin infection. You may need medicine to treat the skin infection before using Clobetasol Propionate Foam, 0.05% (Emulsion).
- have diabetes.
- have adrenal gland problems.
- have liver problems.
- plan to have surgery.
- are pregnant or plan to become pregnant. It is not known if Clobetasol Propionate Foam, 0.05% (Emulsion) will harm your unborn baby. If you use Clobetasol Propionate Foam, 0.05% (Emulsion) during pregnancy, use Clobetasol Propionate Foam, 0.05% (Emulsion) on the smallest area of skin and for the shortest time needed.
- are breastfeeding or plan to breastfeed. It is not known if Clobetasol Propionate Foam, 0.05% (Emulsion) passes into your breast milk. If you use Clobetasol Propionate Foam, 0.05% (Emulsion) while breastfeeding, use Clobetasol Propionate Foam, 0.05% (Emulsion) on the smallest area of skin and for the shortest time needed. Do not apply Clobetasol Propionate Foam, 0.05% (Emulsion) directly to the nipple and areola to avoid getting Clobetasol Propionate Foam, 0.05% (Emulsion) into your baby's mouth.

Tell your healthcare provider about all the medicine you take including prescription and over-the-counter medicines, vitamins, and herbal supplements. Do not use other products containing a corticosteroid medicine during treatment with Clobetasol Propionate Foam, 0.05% (Emulsion) without talking to your healthcare provider first.

How should I use Clobetasol Propionate Foam, 0.05% (Emulsion)?

See the “Instructions for Use” for detailed information about the right way to apply Clobetasol Propionate Foam, 0.05% (Emulsion).

- Use Clobetasol Propionate Foam, 0.05% (Emulsion) exactly as your healthcare provider tells you to use it.
- Apply a thin layer of Clobetasol Propionate Foam, 0.05% (Emulsion) to the affected area 2 times each day, 1 time in the morning and 1 time at night, or as directed by your healthcare provider.
- Do not bandage, wrap or cover your treated area unless your healthcare provider tells you to.
- Talk to your healthcare provider if your skin does not improve after 2 weeks of treatment with Clobetasol Propionate Foam, 0.05% (Emulsion).
- Wash your hands after using Clobetasol Propionate Foam, 0.05% (Emulsion).

What should I avoid while using Clobetasol Propionate Foam, 0.05% (Emulsion)?

Clobetasol Propionate Foam, 0.05% (Emulsion) is flammable. Avoid heat, flame, or smoking during and right after you apply Clobetasol Propionate Foam, 0.05% (Emulsion) to your skin.

What are the possible side effects of Clobetasol Propionate Foam, 0.05% (Emulsion)?

Clobetasol Propionate Foam, 0.05% (Emulsion) may cause serious side effects, including:

- **Clobetasol Propionate Foam, 0.05% (Emulsion) can pass through your skin.** Too much

Clobetasol Propionate Foam, 0.05% (Emulsion) passing through your skin can cause adrenal glands to stop working.

- **Cushing's syndrome**, a condition that happens when the body is exposed to too much of the hormone cortisol.
- **High blood sugar (hyperglycemia)**
- **Vision problems.** Clobetasol Propionate Foam, 0.05% (Emulsion) may increase your chance of developing vision problems such as cataract(s) and glaucoma. Tell your healthcare provider if you develop blurred vision or other vision problems during your treatment with Clobetasol Propionate Foam, 0.05% (Emulsion).
- **Skin reactions at the treated site.** Tell your healthcare provider if you get any skin reactions or skin infections.
- **Effects on growth and weight in children.**

Your healthcare provider may do certain blood tests to check for side effects.

The most common side effects of Clobetasol Propionate Foam, 0.05% (Emulsion) include:

- thinning of skin
- itching
- burning
- dryness
- redness

These are not all the side effects of Clobetasol Propionate Foam, 0.05% (Emulsion).

Call your healthcare provider for medical advice about side effects. You may report side effects to FDA at 1-800-FDA-1088.

How should I store Clobetasol Propionate Foam, 0.05% (Emulsion)?

- Store Clobetasol Propionate Foam, 0.05% (Emulsion) at room temperature between 68° to 77°F (20° to 25°C).
- Do not break through (puncture) Clobetasol Propionate Foam, 0.05% (Emulsion) can.
- Never throw the can into a fire, even if the can is empty.
- Do not store Clobetasol Propionate Foam, 0.05% (Emulsion) near heat or at temperatures above 120°F (49°C).

Keep Clobetasol Propionate Foam, 0.05% (Emulsion) and all medicines out of the reach of children.

General information about the safe and effective use of Clobetasol Propionate Foam, 0.05% (Emulsion)

Medicines are sometimes prescribed for purposes other than those listed in a Patient Information leaflet. Do not use Clobetasol Propionate Foam, 0.05% (Emulsion) for a condition for which it was not prescribed. Do not give Clobetasol Propionate Foam, 0.05% (Emulsion) to other people, even if they have the same condition that you have. It may harm them. You can ask your healthcare provider or pharmacist for information about Clobetasol Propionate Foam, 0.05% (Emulsion) that is written for health professionals.

What are the ingredients in Clobetasol Propionate Foam, 0.05% (Emulsion)?

Active ingredient: clobetasol propionate

Inactive ingredients: anhydrous citric acid, cetyl alcohol, cyclomethicone, glycerin, isopropyl myristate, polyoxyl 20 cetostearyl ether, potassium citrate monohydrate, propylene glycol, purified

water, sorbitan monolaurate, and phenoxyethanol as a preservative; pressurized with a hydrocarbon (propane/butane) propellant.

For more information, call Perrigo at 1-866-634-9120 or visit www.perrigo.com.

This Patient Information has been approved by the U.S. Food and Drug Administration.

INSTRUCTIONS FOR USE

Clobetasol Propionate Foam, 0.05% (Emulsion)

Important information: Clobetasol Propionate Foam, 0.05% (Emulsion) is for use on the skin only. Do not get Clobetasol Propionate Foam, 0.05% (Emulsion) in your eyes, mouth, or vagina; if contact happens, rinse well with water.

How to apply Clobetasol Propionate Foam, 0.05% (Emulsion)

Step 1:

Before applying Clobetasol Propionate Foam, 0.05% (Emulsion) for the first time, break the tiny plastic piece at the base of the can's rim by gently pushing back (away from the piece) on the nozzle. See Figure A.



Figure A

Step 2:

Shake the can of Clobetasol Propionate Foam, 0.05% (Emulsion) before use. See Figure B.



Figure B

Step 3:

Turn the can of Clobetasol Propionate Foam, 0.05% (Emulsion) upside down and press the nozzle. See Figure C.



Figure C

Step 4:

Press down on the actuator to dispense a small amount of Clobetasol Propionate Foam, 0.05% (Emulsion) into the palm of your hand. See Figure D.



Figure D

Step 5:

Apply a thin layer of Clobetasol Propionate Foam, 0.05% (Emulsion) to cover the affected area. Gently rub the foam into the affected area until the foam disappears. See Figure E.



Figure E

Step 6: Wash your hands after applying Clobetasol Propionate Foam, 0.05% (Emulsion).

- Throw away any of the unused medicine that you dispensed out of the can.

This Instructions for Use has been approved by the U.S. Food and Drug Administration.

Rx Only

Made in Israel

Manufactured By Perrigo

Yeruham, Israel

Distributed By

Perrigo®

Allegan, MI 49010 • www.perrigo.com

Rev 08-18

Package/Label Display Panel

Rx Only

NDC 45802-637-33

Clobetasol Propionate Foam (Emollient Formulation) 0.05%

For Topical Use Only.

Not For Ophthalmic, Oral, or Intravaginal Use.

100 g

CODE
AREA

Rx Only

NDC 45802-637-33

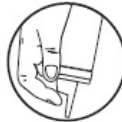
Clobetasol Propionate Foam (Emollient Formulation)

0.05%

For Topical Use Only.
Not For Ophthalmic, Oral,
or Intravaginal Use.

For Topical Use Only.
Not For Ophthalmic, Oral,
or Intravaginal Use.

Shake can before use.
Invert can and then
press firmly to
dispense.



Description: Each gram of Clobetasol Propionate Foam, 0.05% contains 0.5 mg clobetasol propionate, USP. The foam also contains anhydrous citric acid USP, cetyl alcohol NF, cyclomethicone NF, glycerin USP, isopropyl myristate NF, polyoxyl 20 cetostearyl ether NF, potassium citrate monohydrate USP, propylene glycol USP, purified water USP, sorbitan monolaurate NF, and phenoxyethanol NF as a preservative, and is pressurized with a hydrocarbon (propane/butane) propellant.

Dosage: Use only as prescribed by your physician. See package insert for full prescribing information.

Warning: FLAMMABLE. AVOID FIRE, FLAME, OR SMOKING DURING AND IMMEDIATELY FOLLOWING APPLICATION.

Contents under pressure. Do not puncture or incinerate. Do not expose to heat or store at temperatures above 120°F (49°C).

Avoid contact with eyes or other mucous membranes. Keep out of reach of children.

Store at 20-25°C (68-77°F)
[see USP Controlled Room Temperature].

This package is not child resistant.

NDC 45802-637-33

Clobetasol Propionate Foam (Emollient Formulation)

0.05%

For Topical Use Only.
Not For Ophthalmic, Oral,
or Intravaginal Use.

Clobetasol Propionate Foam (Emollient Formulation)

0.05%

For Topical Use Only.
Not For Ophthalmic, Oral,
or Intravaginal Use.

Shake can before use.
Invert can and then
press firmly to
dispense.



CFC FREE

Made in Israel
Manufactured by Perrigo
Yeruham, Israel
Distributed By

Perrigo®

Allegan, MI 49010
www.perrigo.com
Rev. 06/19

60701 RC 02

100 g

Perrigo®

100 g

Perrigo®



NDC 45802-637-33

Clobetasol Propionate Foam (Emollient Formulation)

0.05%

100 g



The following image is a placeholder representing the product identifier that is either affixed or imprinted on the drug package label during the packaging operation.

S/N [insert product's serial number]
 Lot [insert product's lot number]
 Exp [insert product's expiration date]

CLOBETASOL PROPIONATE EMOLLIENT FORMULATION				
clobetasol propionate aerosol, foam				
Product Information				
Product Type	HUMAN PRESCRIPTION DRUG	Item Code (Source)	NDC:45802-637	
Route of Administration	TOPICAL			
Active Ingredient/Active Moiety				
Ingredient Name		Basis of Strength	Strength	
CLOBETASOL PROPIONATE (UNII: 779619577M) (CLOBETASOL - UNII:ADN79D536H)		CLOBETASOL PROPIONATE	0.5 mg in 1 g	
Inactive Ingredients				
Ingredient Name			Strength	
ANHYDROUS CITRIC ACID (UNII: XF417D3PSL)				
CETYL ALCOHOL (UNII: 936JST6JCN)				
CYCLOMETHICONE (UNII: NMQ347994Z)				
GLYCERIN (UNII: PDC6A3C0OX)				
ISOPROPYL MYRISTATE (UNII: 0RE8K4LNJS)				
POLYOXYL 20 CETOSTEARYL ETHER (UNII: YRC528SWUY)				
POTASSIUM CITRATE (UNII: EE90ONI6FF)				
PROPYLENE GLYCOL (UNII: 6DC9Q167V3)				
WATER (UNII: 059QF0KO0R)				
SORBITAN MONOLAURATE (UNII: 6W9PS8B71J)				
PHENOXYETHANOL (UNII: HIE492ZZ3T)				
Packaging				
#	Item Code	Package Description	Marketing Start Date	Marketing End Date

1	NDC:45802-637-33	1 in 1 CARTON	02/01/2013	
1		100 g in 1 CAN; Type 0: Not a Combination Product		
2	NDC:45802-637-32	1 in 1 CARTON	02/01/2013	
2		50 g in 1 CAN; Type 0: Not a Combination Product		

Marketing Information

Marketing Category	Application Number or Monograph Citation	Marketing Start Date	Marketing End Date
ANDA	ANDA201402	02/01/2013	

Labeler - Perrigo New York Inc (078846912)

Revised: 9/2019

Perrigo New York Inc