

COLGATE MAXFRESH WITH MINI BREATH COOL MINT- sodium fluoride paste, dentifrice

Colgate-Palmolive Company

Colgate® MaxFresh® with Mini Breath Cool Mint

Drug Facts

Active ingredient

Sodium fluoride 0.24% (0.15% w/v fluoride ion)

Purpose

Anticavity

Use

helps protect against cavities

Warnings

Keep out of reach of children under 6 years of age.

If more than used for brushing is accidentally swallowed, get medical help or contact a Poison Control Center right away.

Directions

adults and children 2 years of age and older	brush teeth thoroughly, preferably after each meal or at least twice a day, or as directed by a dentist or physician
children 2 to 6 years	use only a pea sized amount and supervise child's brushing and rinsing (to minimize swallowing)
children under 2 years	ask a dentist or physician

Inactive ingredients

sorbitol, water, hydrated silica, PEG-12, sodium lauryl sulfate, flavor, cellulose gum, tetrasodium pyrophosphate, cocamidopropyl betaine, sodium saccharin, methylcellulose, FD&C blue no. 1, titanium dioxide

Questions?

1-800-468-6502

Dist. by:

COLGATE-PALMOLIVE COMPANY

New York, NY 10022

PRINCIPAL DISPLAY PANEL - 170 g Tube Carton

Colgate®

Anticavity Fluoride Toothpaste

10X

LONGER

LASTING

COOL†

MaxFresh®

WITH WHITENING

BREATH STRIPS

Recyclable

Tube

NET WT 6.0 OZ (170 g)

COOL MINT

Colgate®
Anticavity Fluoride Toothpaste

NET WT 6.0 OZ (170 g)

10x LONGER LASTING COOL!

MaxFresh®
WITH WHITENING
BREATH STRIPS

COOL MINT

Colgate®
Anticavity Fluoride Toothpaste

NET WT 6.0 OZ (170 g)

10x LONGER LASTING COOL!

MaxFresh®
WITH WHITENING
BREATH STRIPS

COOL MINT

Colgate®

MaxFresh®
WITH WHITENING
BREATH STRIPS
* vs. a leading fluoride toothpaste

Colgate-Palmolive has built a tradition of sourcing mint from local mint farmers over several generations. Most people don't know that the great taste of their Colgate® toothpaste might have started on a farm not far from where they live. Thank you for helping us support all of our American Mint Farmers.

PROUDLY WORKING WITH AMERICAN MINT FARMERS

*Levels of American Mint vary

Recyclable Tube
Learn more about our recyclable tube at colgate.com/goodness

SAVE WATER
Turn off the tap while brushing

Drug Facts

Active ingredient Sodium Fluoride 0.24% (0.15% w/v fluoride ion)	Purpose Anticavity
Use helps protect against cavities	
Warnings Keep out of reach of children under 6 years of age. If more than used for brushing is accidentally swallowed, get medical help or contact a Poison Control Center right away.	

Drug Facts (continued)

Directions adults and children 2 years of age and older children 2 to 6 years children under 2 years	brush teeth thoroughly, preferably after each meal or at least twice a day, or as directed by a dentist or physician use only a pea sized amount and supervise child's brushing and rinsing (to minimize swallowing) ask a dentist or physician
Inactive ingredients Sorbitol, Water, Hydrated Silica, PEG-12, Sodium Lauryl Sulfate, Flavor, Cellulose Gum, Tetrasodium Pyrophosphate, Cocamidopropyl Betaine, Sodium Saccharin, Hydroxypropyl Methylcellulose, Blue 1, Titanium Dioxide.	
Questions? 1-800-468-6502	

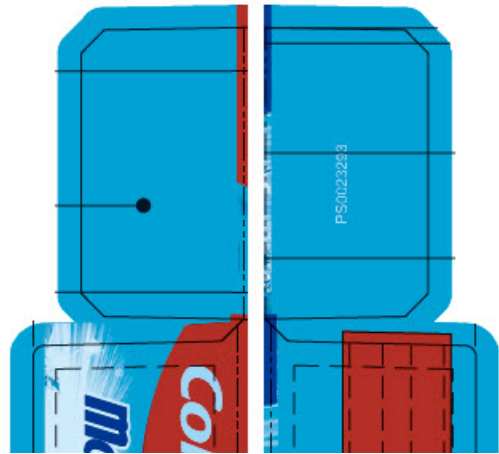
www.colgate.com/maxfresh

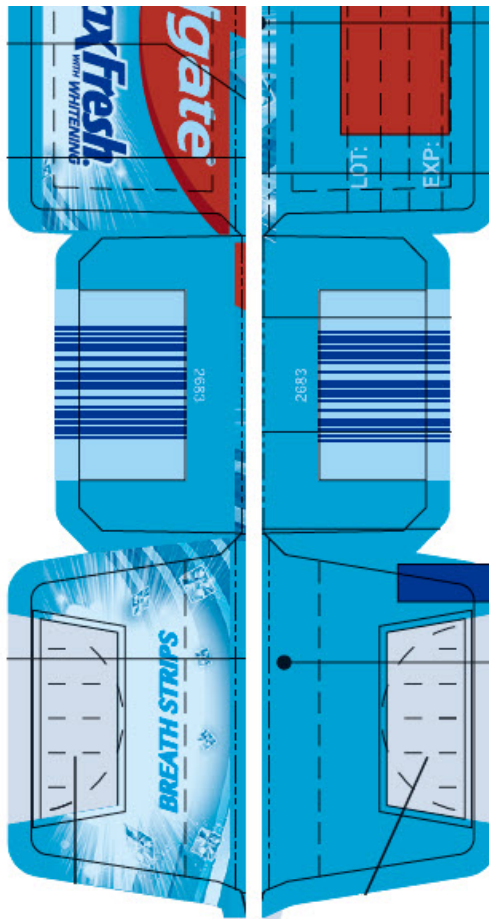
Dist. by:
COLGATE-PALMOLIVE COMPANY
New York, NY 10022 USA

GLUTEN FREE

smartlabel®
app enabled

"This glue flap can be extended to accommodate supplier requirements. It must comply with the CP Quality gluing standards."





COLGATE MAXFRESH WITH MINI BREATH COOL MINT

sodium fluoride paste, dentifrice

Product Information

Product Type	HUMAN OTC DRUG	Item Code (Source)	NDC:35000-014
Route of Administration	DENTAL		

Active Ingredient/Active Moiety

Ingredient Name	Basis of Strength	Strength
SODIUM FLUORIDE (UNII: 8ZYQ1474W7) (FLUORIDE ION - UNII:Q80VPU4080)	FLUORIDE ION	1.1 mg in 1 g

Inactive Ingredients

Ingredient Name	Strength
SORBITOL (UNII: 506T60A25R)	
WATER (UNII: 059QF0KO0R)	
HYDRATED SILICA (UNII: Y607T4G8P9)	
POLYETHYLENE GLYCOL 600 (UNII: NL4J9F21N9)	
SODIUM LAURYL SULFATE (UNII: 368GB5141J)	
CARBOXYMETHYLCELLULOSE SODIUM, UNSPECIFIED (UNII: K679OBS311)	
SODIUM PYROPHOSPHATE (UNII: O352864B8Z)	
COCAMIDOPROPYL BETAINE (UNII: 5OCF3011KX)	

SACCHARIN SODIUM (UNII: SB8ZUX40TY)	
HYPROMELLOSE, UNSPECIFIED (UNII: 3NXW29V3WO)	
FD&C BLUE NO. 1 (UNII: H3R47K3TBD)	
TITANIUM DIOXIDE (UNII: 15FIX9V2JP)	

Product Characteristics

Color	BLUE	Score	
Shape		Size	
Flavor	MINT	Imprint Code	
Contains			

Packaging

#	Item Code	Package Description	Marketing Start Date	Marketing End Date
1	NDC:35000-014-99	1 in 1 CARTON	09/23/2013	12/31/2022
1		53 g in 1 TUBE; Type 0: Not a Combination Product		
2	NDC:35000-014-60	1 in 1 CARTON	09/23/2013	12/31/2024
2		170 g in 1 TUBE; Type 0: Not a Combination Product		
3	NDC:35000-014-34	2 in 1 CARTON	09/23/2013	12/31/2024
3		170 g in 1 TUBE; Type 0: Not a Combination Product		
4	NDC:35000-014-78	1 in 1 CARTON	09/23/2013	12/31/2023
4		215 g in 1 TUBE; Type 0: Not a Combination Product		
5	NDC:35000-014-01	1 in 1 CARTON	09/23/2013	12/31/2022
5		28 g in 1 TUBE; Type 0: Not a Combination Product		
6	NDC:35000-014-79	1 in 1 CARTON	09/23/2013	12/31/2022
6		70 g in 1 TUBE; Type 0: Not a Combination Product		
7	NDC:35000-014-70	1 in 1 CARTON	11/30/2016	12/31/2022
7		215 g in 1 TUBE; Type 0: Not a Combination Product		
8	NDC:35000-014-74	1 in 1 CARTON	06/22/2020	06/30/2024
8		182 g in 1 TUBE; Type 0: Not a Combination Product		
9	NDC:35000-014-95	1 in 1 CARTON	12/01/2021	
9		178 g in 1 TUBE; Type 0: Not a Combination Product		
10	NDC:35000-014-73	1 in 1 CARTON	01/10/2022	
10		206 g in 1 TUBE; Type 0: Not a Combination Product		

11	NDC:35000-014-97	2 in 1 CARTON	10/17/2022	
11		178 g in 1 TUBE; Type 0: Not a Combination Product		
12	NDC:35000-014-30	3 in 1 CELLO PACK	04/13/2023	
12		1 in 1 CARTON		
12		178 g in 1 TUBE; Type 0: Not a Combination Product		

Marketing Information

Marketing Category	Application Number or Monograph Citation	Marketing Start Date	Marketing End Date
OTC MONOGRAPH DRUG	M021	09/23/2013	

Labeler - Colgate-Palmolive Company (001344381)

Revised: 1/2024

Colgate-Palmolive Company