

**LEVETIRACETAM - levetiracetam tablet, film coated**  
**State of Florida DOH Central Pharmacy**

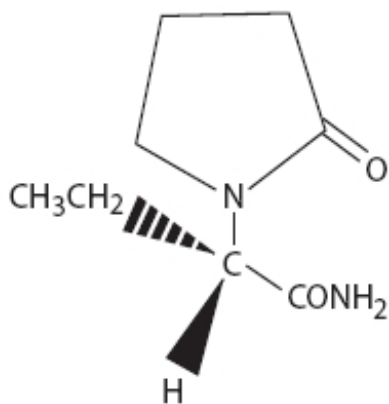
-----  
**Levetiracetam Tablets**

**Rx Only**

**DESCRIPTION**

Levetiracetam is an antiepileptic drug available as 250 mg (blue), 500 mg (yellow) and 750 mg (pink) tablets for oral administration.

The chemical name of levetiracetam, a single enantiomer, is (-)-(S)-2-ethyl-2-oxo-1-pyrrolidine acetamide, its molecular formula is  $C_8H_{14}N_2O_2$  and its molecular weight is 170.21. Levetiracetam is chemically unrelated to existing antiepileptic drugs (AEDs). It has the following structural formula:



Levetiracetam is a white to off-white crystalline powder with a faint odor and a bitter taste. It is very soluble in water (104.0 g/100 mL). It is freely soluble in chloroform (65.3 g/100 mL) and in methanol (53.6 g/100 mL), soluble in ethanol (16.5 g/100 mL), sparingly soluble in acetonitrile (5.7 g/100 mL) and practically insoluble in n-hexane. (Solubility limits are expressed as g/100 mL solvent.)

Levetiracetam tablets contain the labeled amount of levetiracetam. Inactive ingredients: Colloidal silicon dioxide, corn starch, magnesium stearate, povidone, talc

The individual tablets contain the following coating materials:

250 mg tablets: Opadry Blue (hydroxypropyl methylcellulose, polyethylene glycol 4000, titanium dioxide, FD&C Blue #2 Indigo and Carmine Aluminum Lake)

500 mg tablets: Opadry Yellow (hydroxypropyl methylcellulose, polyethylene glycol 4000, titanium dioxide and Iron Oxide Yellow)

750 mg tablets: Opadry Pink (hydroxypropyl methylcellulose, polyethylene glycol 4000, titanium dioxide, Iron Oxide Red and Iron Oxide Yellow)

**CLINICAL PHARMACOLOGY**

**Mechanism Of Action**

The precise mechanism(s) by which levetiracetam exerts its antiepileptic effect is unknown. The

antiepileptic activity of levetiracetam was assessed in a number of animal models of epileptic seizures. Levetiracetam did not inhibit single seizures induced by maximal stimulation with electrical current or different chemoconvulsants and showed only minimal activity in submaximal stimulation and in threshold tests. Protection was observed, however, against secondarily generalized activity from focal seizures induced by pilocarpine and kainic acid, two chemoconvulsants that induce seizures that mimic some features of human complex partial seizures with secondary generalization. Levetiracetam also displayed inhibitory properties in the kindling model in rats, another model of human complex partial seizures, both during kindling development and in the fully kindled state. The predictive value of these animal models for specific types of human epilepsy is uncertain.

*In vitro* and *in vivo* recordings of epileptiform activity from the hippocampus have shown that levetiracetam inhibits burst firing without affecting normal neuronal excitability, suggesting that levetiracetam may selectively prevent hypersynchronization of epileptiform burst firing and propagation of seizure activity.

Levetiracetam at concentrations of up to 10  $\mu\text{M}$  did not demonstrate binding affinity for a variety of known receptors, such as those associated with benzodiazepines, GABA (gammaaminobutyric acid), glycine, NMDA (N-methyl-D-aspartate), re-uptake sites, and second messenger systems. Furthermore, *in vitro* studies have failed to find an effect of levetiracetam on neuronal voltage-gated sodium or T-type calcium currents and levetiracetam does not appear to directly facilitate GABAergic neurotransmission. However, *in vitro* studies have demonstrated that levetiracetam opposes the activity of negative modulators of GABA- and glycine-gated currents and partially inhibits N-type calcium currents in neuronal cells.

A saturable and stereoselective neuronal binding site in rat brain tissue has been described for levetiracetam. Experimental data indicate that this binding site is the synaptic vesicle protein SV2A, thought to be involved in the regulation of vesicle exocytosis. Although the molecular significance of levetiracetam binding to synaptic vesicle protein SV2A is not understood, levetiracetam and related analogs showed a rank order of affinity for SV2A which correlated with the potency of their antiseizure activity in audiogenic seizure-prone mice. These findings suggest that the interaction of levetiracetam with the SV2A protein may contribute to the antiepileptic mechanism of action of the drug.

## **Pharmacokinetics**

The pharmacokinetics of levetiracetam have been studied in healthy adult subjects, adults and pediatric patients with epilepsy, elderly subjects and subjects with renal and hepatic impairment.

## **Overview**

Levetiracetam is rapidly and almost completely absorbed after oral administration. Levetiracetam tablets and oral solution are bioequivalent. The pharmacokinetics are linear and time-invariant, with low intra- and inter-subject variability. The extent of bioavailability of levetiracetam is not affected by food. Levetiracetam is not significantly protein-bound (<10% bound) and its volume of distribution is close to the volume of intracellular and extracellular water. Sixty-six percent (66%) of the dose is renally excreted unchanged. The major metabolic pathway of levetiracetam (24% of dose) is an enzymatic hydrolysis of the acetamide group. It is not liver cytochrome P450 dependent. The metabolites have no known pharmacological activity and are renally excreted. Plasma half-life of levetiracetam across studies is approximately 6-8 hours. It is increased in the elderly (primarily due to impaired renal clearance) and in subjects with renal impairment.

## **Absorption and Distribution**

Absorption of levetiracetam is rapid, with peak plasma concentrations occurring in about an hour following oral administration in fasted subjects. The oral bioavailability of levetiracetam tablets is 100% and the tablets and oral solution are bioequivalent in rate and extent of absorption. Food does not affect the extent of absorption of levetiracetam but it decreases  $C_{\text{max}}$  by 20% and delays  $T_{\text{max}}$  by 1.5 hours. The pharmacokinetics of levetiracetam are linear over the dose range of 500-5000 mg. Steady

state is achieved after 2 days of multiple twicedaily dosing. Levetiracetam and its major metabolite are less than 10% bound to plasma proteins; clinically significant interactions with other drugs through competition for protein binding sites are therefore unlikely.

## **Metabolism**

Levetiracetam is not extensively metabolized in humans. The major metabolic pathway is the enzymatic hydrolysis of the acetamide group, which produces the carboxylic acid metabolite, ucb L057 (24% of dose) and is not dependent on any liver cytochrome P450 isoenzymes. The major metabolite is inactive in animal seizure models. Two minor metabolites were identified as the product of hydroxylation of the 2-oxo-pyrrolidine ring (2% of dose) and opening of the 2-oxo-pyrrolidine ring in position 5 (1% of dose). There is no enantiomeric interconversion of levetiracetam or its major metabolite.

## **Elimination**

Levetiracetam plasma half-life in adults is  $7 \pm 1$  hour and is unaffected by either dose or repeated administration. Levetiracetam is eliminated from the systemic circulation by renal excretion as unchanged drug which represents 66% of administered dose. The total body clearance is 0.96 mL/min/kg and the renal clearance is 0.6 mL/min/kg. The mechanism of excretion is glomerular filtration with subsequent partial tubular reabsorption. The metabolite ucb L057 is excreted by glomerular filtration and active tubular secretion with a renal clearance of 4 mL/min/kg. Levetiracetam elimination is correlated to creatinine clearance. Levetiracetam clearance is reduced in patients with impaired renal function (see **Special Populations: Renal Impairment** and **DOSAGE AND ADMINISTRATION: Adult Patients With Impaired Renal Function**).

## **Pharmacokinetic Interactions**

*In vitro* data on metabolic interactions indicate that levetiracetam is unlikely to produce, or be subject to, pharmacokinetic interactions. Levetiracetam and its major metabolite, at concentrations well above C<sub>max</sub> levels achieved within the therapeutic dose range, are neither inhibitors of, nor high affinity substrates for, human liver cytochrome P450 isoforms, epoxide hydrolase or UDP-glucuronidation enzymes. In addition, levetiracetam does not affect the *in vitro* glucuronidation of valproic acid.

Potential pharmacokinetic interactions of or with levetiracetam were assessed in clinical pharmacokinetic studies (phenytoin, valproate, warfarin, digoxin, oral contraceptive, probenecid) and through pharmacokinetic screening in the placebo controlled clinical studies in epilepsy patients (see **PRECAUTIONS: Drug interactions**).

## **Special Populations**

### **Elderly**

Pharmacokinetics of levetiracetam were evaluated in 16 elderly subjects (age 61-88 years) with creatinine clearance ranging from 30 to 74 mL/min. Following oral administration of twice-daily dosing for 10 days, total body clearance decreased by 38% and the half-life was 2.5 hours longer in the elderly compared to healthy adults. This is most likely due to the decrease in renal function in these subjects.

### **Pediatric Patients**

Pharmacokinetics of levetiracetam were evaluated in 24 pediatric patients (age 6-12 years) after single dose (20 mg/kg). The body weight adjusted apparent clearance of levetiracetam was approximately 40% higher than in adults.

A repeat dose pharmacokinetic study was conducted in pediatric patients (age 4-12 years) at doses of 20 mg/kg/day, 40 mg/kg/day, and 60 mg/kg/day. The evaluation of the pharmacokinetic profile of levetiracetam and its metabolite (ucb L057) in 14 pediatric patients demonstrated rapid absorption of levetiracetam at all doses with a T<sub>max</sub> of about 1 hour and a t<sub>1/2</sub> of 5 hours across the three dosing levels. The pharmacokinetics of levetiracetam in children was linear between 20 to 60 mg/kg/day. The

potential interaction of levetiracetam with other AEDs was also evaluated in these patients (see **PRECAUTIONS: Drug interactions**). Levetiracetam had no significant effect on the plasma concentrations of carbamazepine, valproic acid, topiramate or lamotrigine. However, there was about a 22% increase of apparent clearance of levetiracetam when it was co-administered with an enzyme inducing AED (e.g., carbamazepine). Population pharmacokinetic analysis showed that body weight was significantly correlated to clearance of levetiracetam in pediatric patients; clearance increased with an increase in body weight.

### **Gender**

Levetiracetam C<sub>max</sub> and AUC were 20% higher in women (N=11) compared to men (N=12). However, clearances adjusted for body weight were comparable.

### **Race**

Formal pharmacokinetic studies of the effects of race have not been conducted. Cross study comparisons involving Caucasians (N=12) and Asians (N=12), however, show that pharmacokinetics of levetiracetam were comparable between the two races. Because levetiracetam is primarily renally excreted and there are no important racial differences in creatinine clearance, pharmacokinetic differences due to race are not expected.

### **Renal Impairment**

The disposition of levetiracetam was studied in adult subjects with varying degrees of renal function. Total body clearance of levetiracetam is reduced in patients with impaired renal function by 40% in the mild group (CL<sub>cr</sub> = 50-80 mL/min), 50% in the moderate group (CL<sub>cr</sub> = 30-50 mL/min) and 60% in the severe renal impairment group (CL<sub>cr</sub> <30 mL/min). Clearance of levetiracetam is correlated with creatinine clearance.

In anuric (end stage renal disease) patients, the total body clearance decreased 70% compared to normal subjects (CL<sub>cr</sub> >80 mL/min). Approximately 50% of the pool of levetiracetam in the body is removed during a standard 4-hour hemodialysis procedure.

Dosage should be reduced in patients with impaired renal function receiving levetiracetam, and supplemental doses should be given to patients after dialysis (see **PRECAUTIONS** and **DOSAGE AND ADMINISTRATION: Adult Patients With Impaired Renal Function**).

### **Hepatic Impairment**

In subjects with mild (Child-Pugh A) to moderate (Child-Pugh B) hepatic impairment, the pharmacokinetics of levetiracetam were unchanged. In patients with severe hepatic impairment (Child-Pugh C), total body clearance was 50% that of normal subjects, but decreased renal clearance accounted for most of the decrease. No dose adjustment is needed for patients with hepatic impairment.

## **CLINICAL STUDIES**

In the following studies, statistical significance versus placebo indicates a p value < 0.05.

### **Effectiveness In Partial Onset Seizures In Adults With Epilepsy**

The effectiveness of levetiracetam as adjunctive therapy (added to other antiepileptic drugs) in adults was established in three multicenter, randomized, double-blind, placebo-controlled clinical studies in patients who had refractory partial onset seizures with or without secondary generalization. The tablet formulation was used in all these studies. In these studies, 904 patients were randomized to placebo, 1000 mg, 2000 mg, or 3000 mg/day. Patients enrolled in Study 1 or Study 2 had refractory partial onset seizures for at least two years and had taken two or more classical AEDs. Patients enrolled in Study 3 had refractory partial onset seizures for at least 1 year and had taken one classical AED. At the time of the study, patients were taking a stable dose regimen of at least one and could take a maximum of two

AEDs. During the baseline period, patients had to have experienced at least two partial onset seizures during each 4-week period.

### Study 1

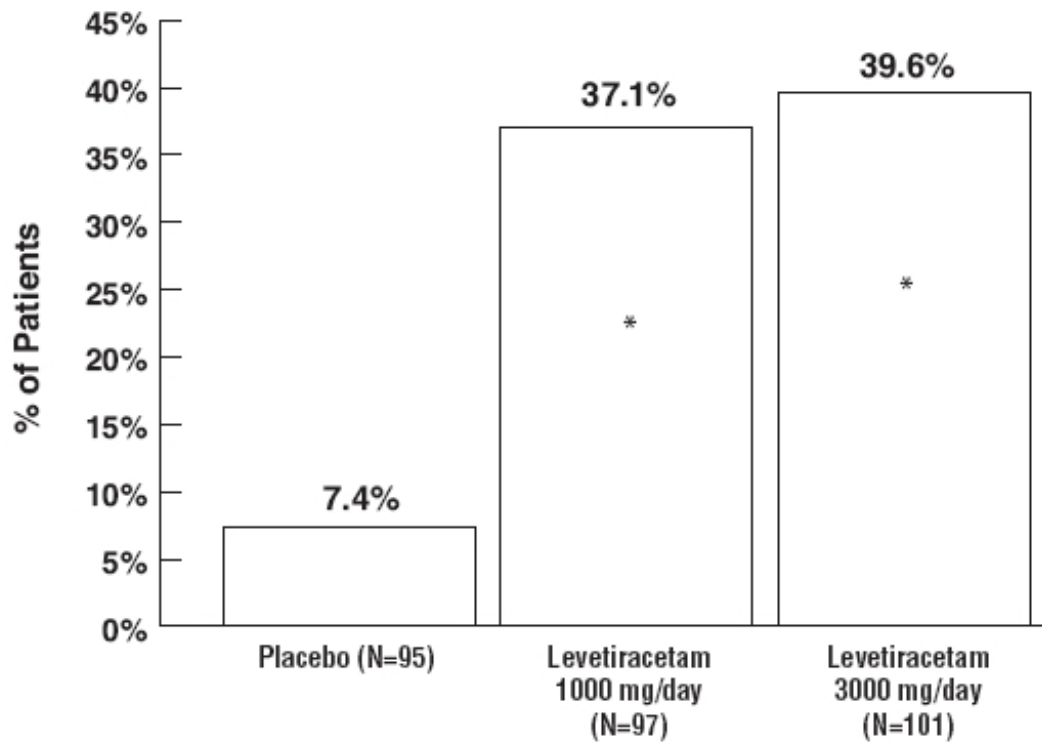
Study 1 was a double-blind, placebo-controlled, parallel-group study conducted at 41 sites in the United States comparing levetiracetam 1000 mg/day (N=97), levetiracetam 3000 mg/day (N=101), and placebo (N=95) given in equally divided doses twice daily. After a prospective baseline period of 12 weeks, patients were randomized to one of the three treatment groups described above. The 18-week treatment period consisted of a 6-week titration period, followed by a 12-week fixed dose evaluation period, during which concomitant AED regimens were held constant. The primary measure of effectiveness was a between group comparison of the percent reduction in weekly partial seizure frequency relative to placebo over the entire randomized treatment period (titration + evaluation period). Secondary outcome variables included the responder rate (incidence of patients with  $\geq 50\%$  reduction from baseline in partial onset seizure frequency). The results of the analysis of Study 1 are displayed in Table 1.

**Table 1: Reduction In Mean Over Placebo In Weekly Frequency Of Partial Onset Seizures In Study 1**

	Placebo (N=95)	Levetiracetam 1000 mg/day (N=97)	Levetiracetam 3000 mg/day (N=101)
Percent reduction in partial seizure frequency over placebo	-	26.1%*	30.1%*

\* statistically significant versus placebo

The percentage of patients (y-axis) who achieved  $\geq 50\%$  reduction in weekly seizure rates from baseline in partial onset seizure frequency over the entire randomized treatment period (titration + evaluation period) within the three treatment groups (x-axis) is presented in Figure 1.



**Figure 1: Responder Rate (≥50% Reduction From Baseline) In Study 1 \*statistically significant versus placebo**

## Study 2

Study 2 was a double-blind, placebo-controlled, crossover study conducted at 62 centers in Europe comparing levetiracetam 1000 mg/day (N=106), Levetiracetam 2000 mg/day (N=105), and placebo (N=111) given in equally divided doses twice daily.

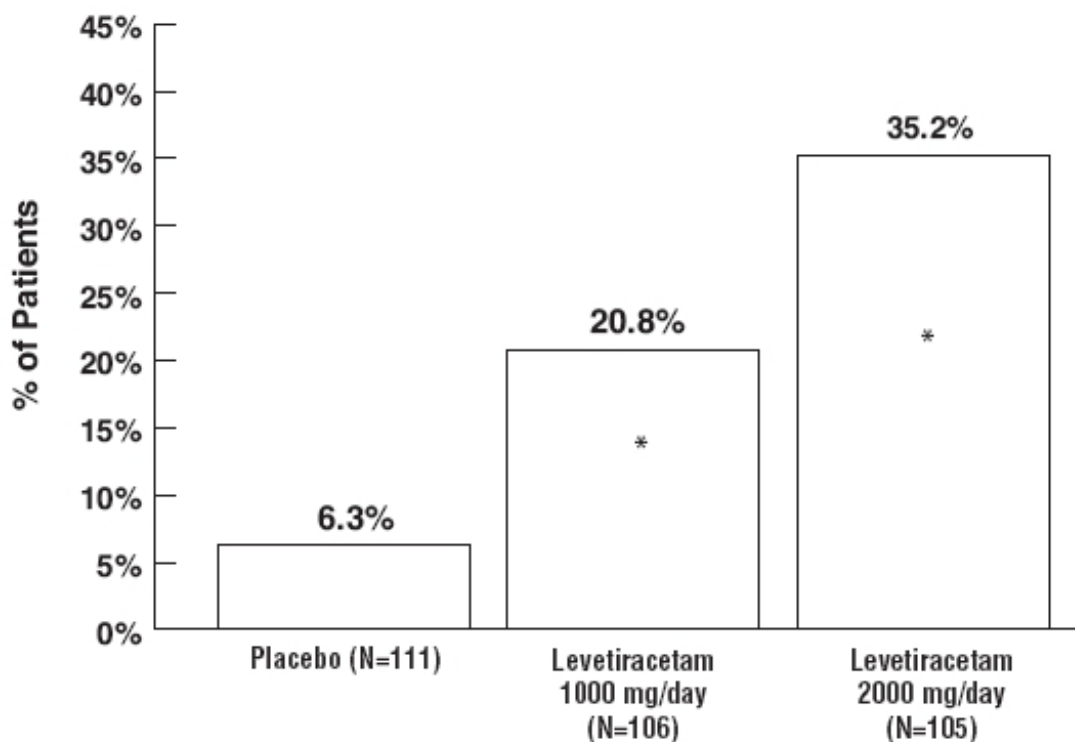
The first period of the study (Period A) was designed to be analyzed as a parallel group study. After a prospective baseline period of up to 12 weeks, patients were randomized to one of the three treatment groups described above. The 16-week treatment period consisted of the 4-week titration period followed by a 12-week fixed dose evaluation period, during which concomitant AED regimens were held constant. The primary measure of effectiveness was a between group comparison of the percent reduction in weekly partial seizure frequency relative to placebo over the entire randomized treatment period (titration + evaluation period). Secondary outcome variables included the responder rate (incidence of patients with ≥50% reduction from baseline in partial onset seizure frequency). The results of the analysis of Period A are displayed in Table 2.

	Placebo (N=111)	Levetiracetam 1000 mg/day (N=106)	Levetiracetam 2000 mg/day (N=105)
Percent reduction in partial seizure frequency over placebo	–	17.1% *	21.4% *

\*statistically significant versus placebo

**Table 2: Reduction In Mean Over Placebo In Weekly Frequency Of Partial Onset Seizures In Study 2: Period A**

The percentage of patients (y-axis) who achieved  $\geq 50\%$  reduction in weekly seizure rates from baseline in partial onset seizure frequency over the entire randomized treatment period (titration + evaluation period) within the three treatment groups (x-axis) is presented in Figure 2.



\*statistically significant versus placebo

**Figure 2: Responder Rate ( $\geq 50\%$  Reduction From Baseline) In Study 2: Period A**

The comparison of levetiracetam 2000 mg/day to levetiracetam 1000 mg/day for responder rate was statistically significant ( $P=0.02$ ). Analysis of the trial as a crossover yielded similar results.

### Study 3

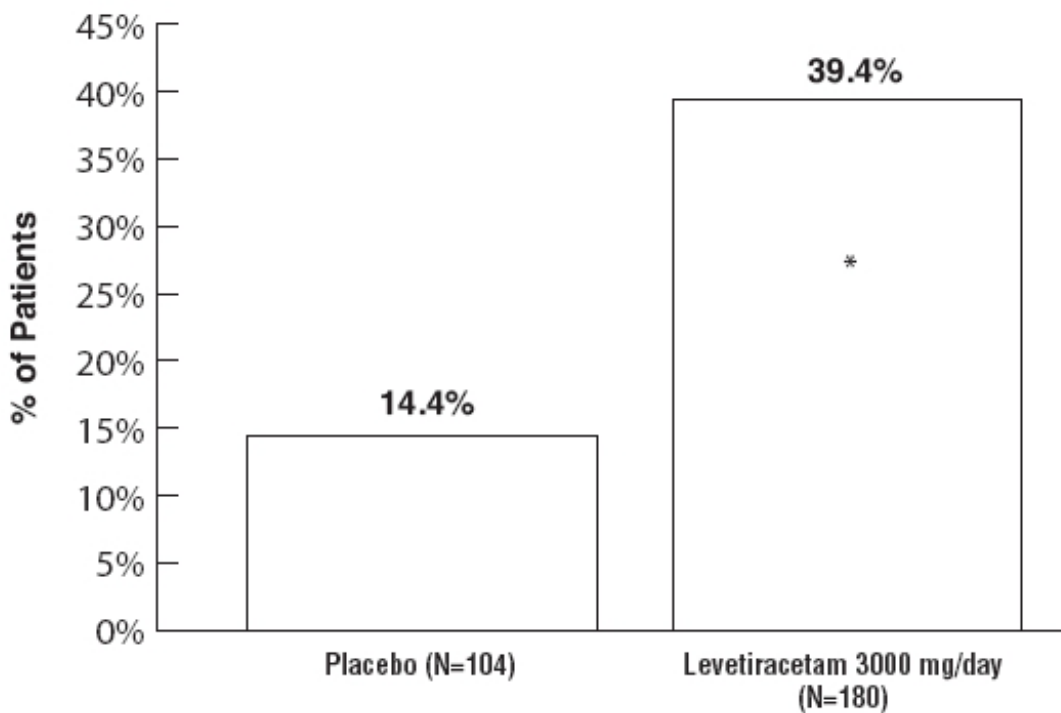
Study 3 was a double-blind, placebo-controlled, parallel-group study conducted at 47 centers in Europe comparing Levetiracetam 3000 mg/day (N=180) and placebo (N=104) in patients with refractory partial onset seizures, with or without secondary generalization, receiving only one concomitant AED. Study drug was given in two divided doses. After a prospective baseline period of 12 weeks, patients were randomized to one of two treatment groups described above. The 16-week treatment period consisted of a 4-week titration period, followed by a 12-week fixed dose evaluation period, during which concomitant AED doses were held constant. The primary measure of effectiveness was a between group comparison of the percent reduction in weekly seizure frequency relative to placebo over the entire randomized treatment period (titration + evaluation period). Secondary outcome variables included the responder rate (incidence of patients with  $\geq 50\%$  reduction from baseline in partial onset seizure frequency). Table 3 displays the results of the analysis of Study 3.

	Placebo (N=104)	Levetiracetam 3000 mg/day (N=180)
Percent reduction in partial seizure frequency over placebo	–	23.0% *

\*statistically significant versus placebo

**Table 3: Reduction In Mean Over Placebo In Weekly Frequency Of Partial Onset Seizures In Study 3**

The percentage of patients (y-axis) who achieved  $\geq 50\%$  reduction in weekly seizure rates from baseline in partial onset seizure frequency over the entire randomized treatment period (titration + evaluation period) within the two treatment groups (x-axis) is presented in Figure 3.



\*statistically significant versus placebo

**Figure 3: Responder Rate ( $\geq 50\%$  Reduction From Baseline) In Study 3**

### **Effectiveness In Partial Onset Seizures In Pediatric Patients With Epilepsy**

The effectiveness of levetiracetam as adjunctive therapy (added to other antiepileptic drugs) in pediatric patients was established in one multicenter, randomized double-blind, placebo-controlled study, conducted at 60 sites in North America, in children 4 to 16 years of age with partial seizures uncontrolled by standard antiepileptic drugs (AEDs). Eligible patients on a stable dose of 1-2 AEDs, who still experienced at least 4 partial onset seizures during the 4 weeks prior to screening, as well as at least 4 partial onset seizures in each of the two 4-week baseline periods, were randomized to receive either levetiracetam or placebo. The enrolled population included 198 patients (levetiracetam N=101, placebo N=97) with refractory partial onset seizures, whether or not secondarily generalized. The study consisted of an 8-week baseline period and 4-week titration period followed by a 10-week evaluation period. Dosing was initiated at a dose of 20 mg/kg/day in two divided doses. During the treatment period, levetiracetam doses were adjusted in 20 mg/kg/day increments, at 2-week intervals to



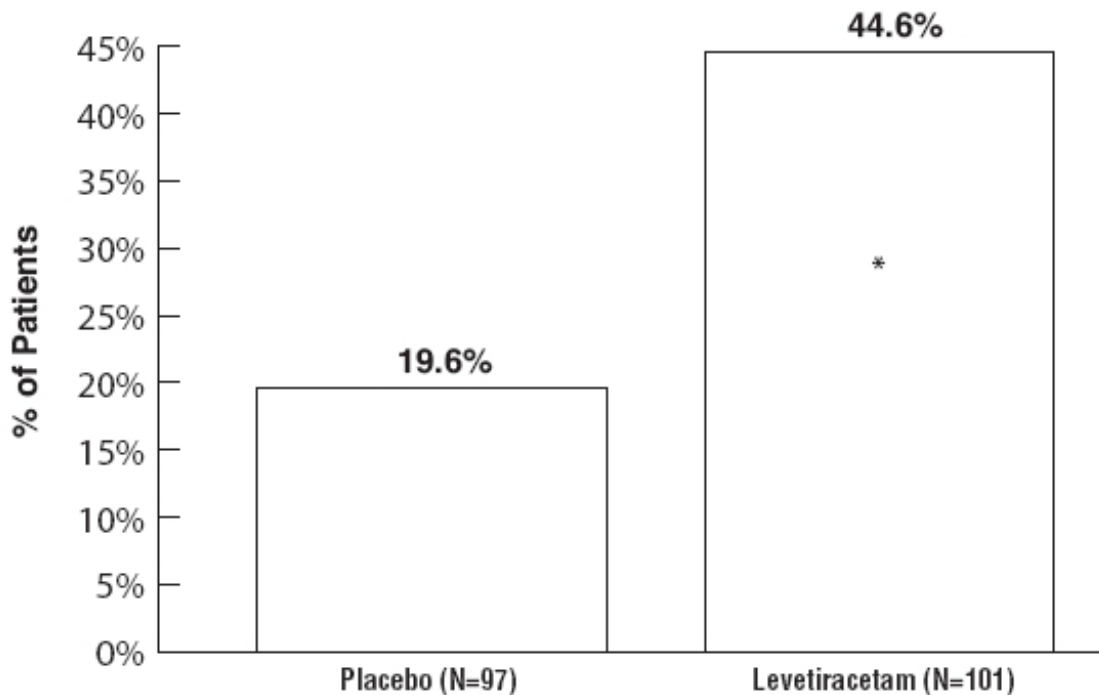
the target dose of 60 mg/kg/day. The primary measure of effectiveness was a between group comparison of the percent reduction in weekly partial seizure frequency relative to placebo over the entire 14-week randomized treatment period (titration + evaluation period). Secondary outcome variables included the responder rate (incidence of patients with  $\geq 50\%$  reduction from baseline in partial onset seizure frequency per week). Table 4 displays the results of this study.

	Placebo (N=97)	Levetiracetam (N=101)
Percent reduction in partial seizure frequency over placebo	–	26.8%*

\*statistically significant versus placebo

**Table 4: Reduction In Mean Over Placebo In Weekly Frequency Of Partial Onset Seizures**

The percentage of patients (y-axis) who achieved  $\geq 50\%$  reduction in weekly seizure rates from baseline in partial onset seizure frequency over the entire randomized treatment period (titration + evaluation period) within the two treatment groups (x-axis) is presented in Figure 4.



\*statistically significant versus placebo

**Figure 4: Responder Rate ( $\geq 50\%$  Reduction From Baseline)**

## INDICATIONS AND USAGE

Levetiracetam is indicated as adjunctive therapy in the treatment of partial onset seizures in adults and children 4 years of age and older with epilepsy.

## CONTRAINDICATIONS

This product should not be administered to patients who have previously exhibited hypersensitivity to

levetiracetam or any of the inactive ingredients in levetiracetam tablets or oral solution.

## **WARNINGS**

### **Neuropsychiatric Adverse Events**

#### **Partial Onset Seizures**

##### **Adults**

In adults experiencing partial onset seizures, levetiracetam use is associated with the occurrence of central nervous system adverse events that can be classified into the following categories: 1) somnolence and fatigue, 2) coordination difficulties, and 3) behavioral abnormalities.

In controlled trials of adult patients with epilepsy experiencing partial onset seizures, 14.8% of levetiracetam-treated patients reported somnolence, compared to 8.4% of placebo patients. There was no clear dose response up to 3000 mg/day. In a study where there was no titration, about 45% of patients receiving 4000 mg/day reported somnolence. The somnolence was considered serious in 0.3% of the treated patients, compared to 0% in the placebo group. About 3% of levetiracetam-treated patients discontinued treatment due to somnolence, compared to 0.7% of placebo patients. In 1.4% of treated patients and in 0.9% of placebo patients the dose was reduced, while 0.3% of the treated patients were hospitalized due to somnolence.

In controlled trials of adult patients with epilepsy experiencing partial onset seizures, 14.7% of treated patients reported asthenia, compared to 9.1% of placebo patients. Treatment was discontinued in 0.8% of treated patients as compared to 0.5% of placebo patients. In 0.5% of treated patients and in 0.2% of placebo patients the dose was reduced.

A total of 3.4% of levetiracetam-treated patients experienced coordination difficulties, (reported as either ataxia, abnormal gait, or incoordination) compared to 1.6% of placebo patients. A total of 0.4% of patients in controlled trials discontinued levetiracetam treatment due to ataxia, compared to 0% of placebo patients. In 0.7% of treated patients and in 0.2% of placebo patients the dose was reduced due to coordination difficulties, while one of the treated patients was hospitalized due to worsening of pre-existing ataxia.

Somnolence, asthenia and coordination difficulties occurred most frequently within the first 4 weeks of treatment.

In controlled trials of patients with epilepsy experiencing partial onset seizures, 5 (0.7%) of levetiracetam-treated patients experienced psychotic symptoms compared to 1 (0.2%) placebo patient. Two (0.3%) levetiracetam-treated patients were hospitalized and their treatment was discontinued. Both events, reported as psychosis, developed within the first week of treatment and resolved within 1 to 2 weeks following treatment discontinuation. Two other events, reported as hallucinations, occurred after 1-5 months and resolved within 2-7 days while the patients remained on treatment. In one patient experiencing psychotic depression occurring within a month, symptoms resolved within 45 days while the patient continued treatment.

A total of 13.3% of levetiracetam patients experienced other behavioral symptoms (reported as aggression, agitation, anger, anxiety, apathy, depersonalization, depression, emotional lability, hostility, irritability, etc.) compared to 6.2% of placebo patients. Approximately half of these patients reported these events within the first 4 weeks. A total of 1.7% of treated patients discontinued treatment due to these events, compared to 0.2% of placebo patients. The treatment dose was reduced in 0.8% of treated patients and in 0.5% of placebo patients. A total of 0.8% of treated patients had a serious behavioral event (compared to 0.2% of placebo patients) and were hospitalized.

In addition, 4 (0.5%) of treated patients attempted suicide compared to 0% of placebo patients. One of these patients completed suicide. In the other 3 patients, the events did not lead to discontinuation or

dose reduction. The events occurred after patients had been treated for between 4 weeks and 6 months (see **PRECAUTIONS: Information for patients**).

### **Pediatric Patients**

In pediatric patients experiencing partial onset seizures, levetiracetam is associated with somnolence, fatigue, and behavioral abnormalities.

In the double-blind, controlled trial in children with epilepsy experiencing partial onset seizures, 22.8% of levetiracetam-treated patients experienced somnolence, compared to 11.3% of placebo patients. The design of the study prevented accurately assessing doseresponse effects. No patient discontinued treatment for somnolence. In about 3.0% of levetiracetam-treated patients and in 3.1% of placebo patients the dose was reduced as a result of somnolence.

Asthenia was reported in 8.9% of levetiracetam-treated patients, compared to 3.1% of placebo patients. No patient discontinued treatment for asthenia, but asthenia led to a dose reduction in 3.0% of levetiracetam-treated patients compared to 0% of placebo patients.

A total of 37.6% of the levetiracetam-treated patients experienced behavioral symptoms (reported as agitation, anxiety, apathy, depersonalization, depression, emotional lability, hostility, hyperkinesia, nervousness, neurosis, and personality disorder), compared to 18.6% of placebo patients. Hostility was reported in 11.9% of levetiracetam-treated patients, compared to 6.2% of placebo patients. Nervousness was reported in 9.9% of levetiracetam-treated patients, compared to 2.1% of placebo patients. Depression was reported in 3.0% of levetiracetam-treated patients, compared to 1.0% of placebo patients.

One levetiracetam-treated patient experienced suicidal ideation (see **PRECAUTIONS: Information for patients**).

A total of 3.0% of levetiracetam-treated patients discontinued treatment due to psychotic and nonpsychotic adverse events, compared to 4.1% of placebo patients. Overall, 10.9% of levetiracetam-treated patients experienced behavioral symptoms associated with discontinuation or dose reduction, compared to 6.2% of placebo patients.

### **Withdrawal Seizures**

Antiepileptic drugs, including levetiracetam, should be withdrawn gradually to minimize the potential of increased seizure frequency.

## **PRECAUTIONS**

### **Hematologic Abnormalities**

#### **Partial Onset Seizures**

##### **Adults**

Minor, but statistically significant, decreases compared to placebo in total mean RBC count ( $0.03 \times 10^6/\text{mm}^3$ ), mean hemoglobin (0.09 g/dL), and mean hematocrit (0.38%), were seen in levetiracetam-treated patients in controlled trials.

A total of 3.2% of treated and 1.8% of placebo patients had at least one possibly significant ( $\leq 2.8 \times 10^9/\text{L}$ ) decreased WBC, and 2.4% of treated and 1.4% of placebo patients had at least one possibly significant ( $\leq 1.0 \times 10^9/\text{L}$ ) decreased neutrophil count. Of the treated patients with a low neutrophil count, all but one rose towards or to baseline with continued treatment. No patient was discontinued secondary to low neutrophil counts.

### **Pediatric Patients**

Minor, but statistically significant, decreases in WBC and neutrophil counts were seen in levetiracetam-treated patients as compared to placebo. The mean decreases from baseline in the levetiracetam-treated group were  $-0.4 \times 10^9/L$  and  $-0.3 \times 10^9/L$ , respectively, whereas there were small increases in the placebo group. Mean relative lymphocyte counts increased by 1.7% in levetiracetam-treated patients, compared to a decrease of 4% in placebo patients (statistically significant).

In the well-controlled trial, more levetiracetam-treated patients had a possibly clinically significant abnormally low WBC value (3.0% levetiracetam-treated versus 0% placebo), however, there was no apparent difference between treatment groups with respect to neutrophil count (5.0% levetiracetam-treated versus 4.2% placebo). No patient was discontinued secondary to low WBC or neutrophil counts.

### **Hepatic Abnormalities**

There were no meaningful changes in mean liver function tests (LFT) in controlled trials in adult or pediatric patients; lesser LFT abnormalities were similar in drug and placebo treated patients in controlled trials (1.4%). No adult or pediatric patients were discontinued from controlled trials for LFT abnormalities except for 1 (0.07%) adult epilepsy patient receiving open treatment.

### **Information for patients**

Patients should be instructed to take levetiracetam only as prescribed.

Patients should be advised to notify their physician if they become pregnant or intend to become pregnant during therapy.

Patients should be advised that levetiracetam may cause dizziness and somnolence. Accordingly, patients should be advised not to drive or operate machinery or engage in other hazardous activities until they have gained sufficient experience on levetiracetam to gauge whether it adversely affects their performance of these activities.

Patients should be advised that levetiracetam may cause changes in behavior (e.g., aggression, agitation, anger, anxiety, apathy, depression, hostility, and irritability) and in rare cases patients may experience psychotic symptoms.

Patients should be advised to immediately report any symptoms of depression and/or suicidal ideation to their prescribing physician as suicide, suicide attempt and suicidal ideation have been reported in patients treated with levetiracetam.

Physicians should advise patients and caregivers to read the patient information leaflet which appears as the last section of the labeling.

### **Laboratory tests**

Although most laboratory tests are not systematically altered with levetiracetam treatment, there have been relatively infrequent abnormalities seen in hematologic parameters and liver function tests.

### **Drug interactions**

*In vitro* data on metabolic interactions indicate that levetiracetam is unlikely to produce, or be subject to, pharmacokinetic interactions. Levetiracetam and its major metabolite, at concentrations well above  $C_{max}$  levels achieved within the therapeutic dose range, are neither inhibitors of nor high affinity substrates for human liver cytochrome P450 isoforms, epoxide hydrolase or UDP-glucuronidation enzymes. In addition, levetiracetam does not affect the *invitro* glucuronidation of valproic acid.

Levetiracetam circulates largely unbound (<10% bound) to plasma proteins; clinically significant interactions with other drugs through competition for protein binding sites are therefore unlikely.

Potential pharmacokinetic interactions were assessed in clinical pharmacokinetic studies (phenytoin, valproate, oral contraceptive, digoxin, warfarin, probenecid) and through pharmacokinetic screening in the placebo-controlled clinical studies in epilepsy patients.

## **Drug-Drug Interactions Between Levetiracetam And Other Antiepileptic Drugs (AEDs)**

### **Phenytoin**

Levetiracetam (3000 mg daily) had no effect on the pharmacokinetic disposition of phenytoin in patients with refractory epilepsy. Pharmacokinetics of levetiracetam were also not affected by phenytoin.

### **Valproate**

Levetiracetam (1500 mg twice daily) did not alter the pharmacokinetics of valproate in healthy volunteers. Valproate 500 mg twice daily did not modify the rate or extent of levetiracetam absorption or its plasma clearance or urinary excretion. There also was no effect on exposure to and the excretion of the primary metabolite, ucb L057.

Potential drug interactions between levetiracetam and other AEDs (carbamazepine, gabapentin, lamotrigine, phenobarbital, phenytoin, primidone and valproate) were also assessed by evaluating the serum concentrations of levetiracetam and these AEDs during placebo-controlled clinical studies. These data indicate that levetiracetam does not influence the plasma concentration of other AEDs and that these AEDs do not influence the pharmacokinetics of levetiracetam.

### **Effect Of AEDs In Pediatric Patients**

There was about a 22% increase of apparent total body clearance of levetiracetam when it was co-administered with enzyme-inducing AEDs. Dose adjustment is not recommended. Levetiracetam had no effect on plasma concentrations of carbamazepine, valproate, topiramate, or lamotrigine.

### **Other Drug Interactions**

#### **Oral Contraceptives**

Levetiracetam (500 mg twice daily) did not influence the pharmacokinetics of an oral contraceptive containing 0.03 mg ethinyl estradiol and 0.15 mg levonorgestrel, or of the luteinizing hormone and progesterone levels, indicating that impairment of contraceptive efficacy is unlikely. Coadministration of this oral contraceptive did not influence the pharmacokinetics of levetiracetam.

#### **Digoxin**

Levetiracetam (1000 mg twice daily) did not influence the pharmacokinetics and pharmacodynamics (ECG) of digoxin given as a 0.25 mg dose every day. Coadministration of digoxin did not influence the pharmacokinetics of levetiracetam.

#### **Warfarin**

Levetiracetam (1000 mg twice daily) did not influence the pharmacokinetics of R and S warfarin. Prothrombin time was not affected by levetiracetam. Coadministration of warfarin did not affect the pharmacokinetics of levetiracetam.

#### **Probenecid**

Probenecid, a renal tubular secretion blocking agent, administered at a dose of 500 mg four times a day, did not change the pharmacokinetics of levetiracetam 1000 mg twice daily  $C^{SS}_{max}$  of the metabolite, ucb L057, was approximately doubled in the presence of probenecid while the fraction of drug excreted unchanged in the urine remained the same. Renal clearance of ucb L057 in the presence of probenecid decreased 60%, probably related to competitive inhibition of tubular secretion of ucb L057. The effect of levetiracetam on probenecid was not studied.

### **Carcinogenesis, mutagenesis, impairment of fertility**

#### **Carcinogenesis**

Rats were dosed with levetiracetam in the diet for 104 weeks at doses of 50, 300 and 1800 mg/kg/day. The highest dose corresponds to 6 times the maximum recommended daily human dose (MRHD) of 3000 mg on a mg/m<sup>2</sup> basis and it also provided systemic exposure (AUC) approximately 6 times that achieved in humans receiving the MRHD. There was no evidence of carcinogenicity. A study was conducted in which mice received levetiracetam in the diet for 80 weeks at doses of 60, 240 and 960 mg/kg/day (high dose is equivalent to 2 times the MRHD on a mg/m<sup>2</sup> or exposure basis). Although no evidence for carcinogenicity was seen, the potential for a carcinogenic response has not been fully evaluated in that species because adequate doses have not been studied.

### **Mutagenesis**

Levetiracetam was not mutagenic in the Ames test or in mammalian cells *in vitro* in the Chinese hamster ovary/HGPRT locus assay. It was not clastogenic in an *in vitro* analysis of metaphase chromosomes obtained from Chinese hamster ovary cells or in an *in vivo* mouse micronucleus assay. The hydrolysis product and major human metabolite of levetiracetam (ucb L057) was not mutagenic in the Ames test or the *in vitro* mouse lymphoma assay.

### **Impairment Of Fertility**

No adverse effects on male or female fertility or reproductive performance were observed in rats at doses up to 1800 mg/kg/day (approximately 6 times the maximum recommended human dose on a mg/m<sup>2</sup> or exposure basis).

### **Pregnancy**

#### **Pregnancy Category C**

In animal studies, levetiracetam produced evidence of developmental toxicity at doses similar to or greater than human therapeutic doses.

Administration to female rats throughout pregnancy and lactation was associated with increased incidences of minor fetal skeletal abnormalities and retarded offspring growth pre- and/or postnatally at doses  $\geq$ 350 mg/kg/day (approximately equivalent to the maximum recommended human dose of 3000 mg [MRHD] on a mg/m<sup>2</sup> basis) and with increased pup mortality and offspring behavioral alterations at a dose of 1800 mg/kg/day (6 times the MRHD on a mg/m<sup>2</sup> basis). The developmental no effect dose was 70 mg/kg/day (0.2 times the MRHD on a mg/m<sup>2</sup> basis). There was no overt maternal toxicity at the doses used in this study.

Treatment of pregnant rabbits during the period of organogenesis resulted in increased embryofetal mortality and increased incidences of minor fetal skeletal abnormalities at doses  $\geq$ 600 mg/kg/day (approximately 4 times MRHD on a mg/m<sup>2</sup> basis) and in decreased fetal weights and increased incidences of fetal malformations at a dose of 1800 mg/kg/day (12 times the MRHD on a mg/m<sup>2</sup> basis). The developmental no effect dose was 200 mg/kg/day (1.3 times the MRHD on a mg/m<sup>2</sup> basis). Maternal toxicity was also observed at 1800 mg/kg/day.

When pregnant rats were treated during the period of organogenesis, fetal weights were decreased and the incidence of fetal skeletal variations was increased at a dose of 3600 mg/kg/day (12 times the MRHD). 1200 mg/kg/day (4 times the MRHD) was a developmental no effect dose. There was no evidence of maternal toxicity in this study.

Treatment of rats during the last third of gestation and throughout lactation produced no adverse developmental or maternal effects at doses of up to 1800 mg/kg/day (6 times the MRHD on a mg/m<sup>2</sup> basis).

There are no adequate and well-controlled studies in pregnant women. Levetiracetam should be used during pregnancy only if the potential benefit justifies the potential risk to the fetus.

### **Antiepileptic Drug Pregnancy Registry**

Patients may also enroll in the North American Antiepileptic Drug Pregnancy Registry by calling (888) 233-2334 (toll free).

### **Labor and delivery**

The effect of levetiracetam on labor and delivery in humans is unknown.

### **Nursing mothers**

Levetiracetam is excreted in breast milk. Because of the potential for serious adverse reactions in nursing infants from levetiracetam, a decision should be made whether to discontinue nursing or discontinue the drug, taking into account the importance of the drug to the mother.

### **Pediatric use**

Safety and effectiveness in patients below 4 years of age have not been established.

Studies of levetiracetam in juvenile rats (dosing from day 4 through day 52 of age) and dogs (dosing from week 3 through week 7 of age) at doses of up to 1800 mg/kg/day (approximately 7 and 24 times, respectively, the maximum recommended pediatric dose of 60 mg/kg/day on a mg/m<sup>2</sup> basis) did not indicate a potential for age-specific toxicity.

### **Geriatric use**

Of the total number of subjects in clinical studies of levetiracetam, 347 were 65 and over. No overall differences in safety were observed between these subjects and younger subjects. There were insufficient numbers of elderly subjects in controlled trials of epilepsy to adequately assess the effectiveness of levetiracetam in these patients.

A study in 16 elderly subjects (age 61-88 years) with oral administration of single dose and multiple twice-daily doses for 10 days showed no pharmacokinetic differences related to age alone.

Levetiracetam is known to be substantially excreted by the kidney, and the risk of adverse reactions to this drug may be greater in patients with impaired renal function. Because elderly patients are more likely to have decreased renal function, care should be taken in dose selection, and it may be useful to monitor renal function.

### **Use In Patients With Impaired Renal Function**

Clearance of levetiracetam is decreased in patients with renal impairment and is correlated with creatinine clearance. Caution should be taken in dosing patients with moderate and severe renal impairment and in patients undergoing hemodialysis. The dosage should be reduced in patients with impaired renal function receiving levetiracetam and supplemental doses should be given to patients after dialysis (see **CLINICAL PHARMACOLOGY** and **DOSAGE AND ADMINISTRATION: Adult Patients With Impaired Renal Function**).

## **ADVERSE REACTIONS**

The prescriber should be aware that the adverse event incidence figures in the following tables, obtained when levetiracetam was added to concurrent AED therapy, cannot be used to predict the frequency of adverse experiences in the course of usual medical practice where patient characteristics and other factors may differ from those prevailing during clinical studies. Similarly, the cited frequencies cannot be directly compared with figures obtained from other clinical investigations involving different treatments, uses, or investigators.

An inspection of these frequencies, however, does provide the prescriber with one basis to estimate the relative contribution of drug and non-drug factors to the adverse event incidences in the population studied.

## **Partial Onset Seizures**

In well-controlled clinical studies in adults with partial onset seizures, the most frequently reported adverse events associated with the use of levetiracetam in combination with other AEDs, not seen at an equivalent frequency among placebo treated patients, were somnolence, asthenia, infection and dizziness. In the well controlled pediatric clinical study in children 4 to 16 years of age with partial onset seizures, the adverse events most frequently reported with the use of levetiracetam in combination with other AEDs, not seen at an equivalent frequency among placebo-treated patients, were somnolence, accidental injury, hostility, nervousness, and asthenia.

Table 5 lists treatment-emergent adverse events that occurred in at least 1% of adult epilepsy patients treated with levetiracetam participating in placebo-controlled studies and were numerically more common than in patients treated with placebo. Table 6 lists treatment-emergent adverse events that occurred in at least 2% of pediatric epilepsy patients (ages 4- 16 years) treated with levetiracetam participating in the placebo-controlled study and were numerically more common than in pediatric patients treated with placebo. In these studies, either levetiracetam or placebo was added to concurrent AED therapy. Adverse events were usually mild to moderate in intensity.



<b>Body System/ Adverse Event</b>	<b>Levetiracetam (N=769) %</b>	<b>Placebo (N=439) %</b>
<b>Body as a Whole</b>		
Asthenia	15	9
Headache	14	13
Infection	13	8
Pain	7	6
<b>Digestive System</b>		
Anorexia	3	2
<b>Nervous System</b>		
Somnolence	15	8
Dizziness	9	4
Depression	4	2
Nervousness	4	2
Ataxia	3	1
Vertigo	3	1
Amnesia	2	1
Anxiety	2	1
Hostility	2	1
Paresthesia	2	1
Emotional Lability	2	0
<b>Respiratory System</b>		
Pharyngitis	6	4
Rhinitis	4	3
Cough Increased	2	1
Sinusitis	2	1
<b>Special Senses</b>		
Diplopia	2	1

**Table 5: Incidence (%) Of Treatment-Emergent Adverse Events In Placebo- Controlled, Add-On Studies In Adults Experiencing Partial Onset Seizures By Body System (Adverse Events Occurred In At Least 1% Of Levetiracetam-Treated Patients And Occurred More Frequently Than Placebo-Treated Patients)**

Other events reported by at least 1% of adult levetiracetam-treated patients but as or more frequent in the placebo group were the following: abdominal pain, accidental injury, amblyopia, arthralgia, back pain, bronchitis, chest pain, confusion, constipation, convulsion, diarrhea, drug level increased, dyspepsia, ecchymosis, fever, flu syndrome, fungal infection, gastroenteritis, gingivitis, grand mal convulsion, insomnia, nausea, otitis media, rash, thinking abnormal, tremor, urinary tract infection, vomiting and weight gain.

<b>Body System/ Adverse Event</b>	<b>Levetiracetam (N=101) %</b>	<b>Placebo (N=97) %</b>
<b>Body as a Whole</b>		
Accidental Injury	17	10
Asthenia	9	3
Pain	6	3
Flu Syndrome	3	2
Face Edema	2	1
Neck Pain	2	1
Viral Infection	2	1
<b>Digestive System</b>		
Vomiting	15	13
Anorexia	13	8
Diarrhea	8	7
Gastroenteritis	4	2
Constipation	3	1
<b>Hemic and Lymphatic System</b>		
Ecchymosis	4	1
<b>Metabolic and Nutritional</b>		
Dehydration	2	1
<b>Nervous System</b>		
Somnolence	23	11
Hostility	12	6
Nervousness	10	2
Personality Disorder	8	7
Dizziness	7	2
Emotional Lability	6	4
Agitation	6	1
Depression	3	1
Vertigo	3	1
Reflexes Increased	2	1
Confusion	2	0
<b>Respiratory System</b>		
Rhinitis	13	8
Cough Increased	11	7
Pharyngitis	10	8
Asthma	2	1
<b>Skin and Appendages</b>		
Pruritis	2	0
Skin Discoloration	2	0
Vesiculobullous Rash	2	0
<b>Special Senses</b>		

Conjunctivitis	3	2
Amblyopia	2	0
Ear Pain	2	0
<b>Urogenital System</b>		
Albuminuria	4	0
Urine Abnormality	2	1

**Table 6: Incidence (%) Of Treatment-Emergent Adverse Events In A Placebo-Controlled, Add-On Study In Pediatric Patients Ages 4-16 Years Experiencing Partial Onset Seizures By Body System (Adverse Events Occurred In At Least 2% Of Levetiracetam-Treated Patients And Occurred More Frequently Than Placebo-Treated Patients)**

Other events occurring in at least 2% of pediatric levetiracetam-treated patients but as or more frequent in the placebo group were the following: abdominal pain, allergic reaction, ataxia, convulsion, epistaxis, fever, headache, hyperkinesia, infection, insomnia, nausea, otitis media, rash, sinusitis, status epilepticus (not otherwise specified), thinking abnormal, tremor, and urinary incontinence.

### **Time Course Of Onset Of Adverse Events For Partial Onset Seizures**

Of the most frequently reported adverse events in adults experiencing partial onset seizures, asthenia, somnolence and dizziness appeared to occur predominantly during the first 4 weeks of treatment with levetiracetam.

### **Discontinuation Or Dose Reduction In Well-Controlled Clinical Studies**

#### **Partial Onset Seizures**

In well-controlled adult clinical studies, 15.0% of patients receiving levetiracetam and 11.6% receiving placebo either discontinued or had a dose reduction as a result of an adverse event. Table 7 lists the most common (>1%) adverse events that resulted in discontinuation or dose reduction.

	Number (%)	
	Levetiracetam (N=769)	Placebo (N=439)
Asthenia	10 (1.3%)	3 (0.7%)
Convulsion	23 (3.0%)	15 (3.4%)
Dizziness	11 (1.4%)	0
Rash	0	5 (1.1%)
Somnolence	34 (4.4%)	7 (1.6%)

**Table 7: Adverse Events That Most Commonly Resulted In Discontinuation Or Dose Reduction In Placebo-Controlled Studies In Adult Patients Experiencing Partial Onset Seizures**

In the well-controlled pediatric clinical study, 16.8% of patients receiving levetiracetam and 20.6% receiving placebo either discontinued or had a dose reduction as a result of an adverse event. The adverse events most commonly associated ( $\geq 3\%$  in patients receiving levetiracetam) with discontinuation or dose reduction in the well-controlled study are presented in Table 8.

	Number (%)	
	Levetiracetam (N=101)	Placebo (N=97)
Asthenia	3 (3.0%)	0
Hostility	7 (6.9%)	2 (2.1%)
Somnolence	3 (3.0%)	3 (3.1%)

**Table 8: Adverse Events Most Commonly Associated With Discontinuation Or Dose Reduction In The Placebo-Controlled Study In Pediatric Patients Ages 4-16 Years Experiencing Partial Onset Seizures**

### **Comparison Of Gender, Age And Race**

The overall adverse experience profile of levetiracetam was similar between females and males. There are insufficient data to support a statement regarding the distribution of adverse experience reports by age and race.

### **Postmarketing Experience**

The following adverse events have been identified during postapproval use of levetiracetam. Because these events are reported voluntarily from a population of uncertain size, it is not always possible to reliably estimate their frequency or establish a casual relationship to drug exposure.

In addition to the adverse experiences listed above, the following have been reported in patients receiving marketed levetiracetam worldwide. The listing is alphabetized: abnormal liver function test, hepatic failure, hepatitis, leukopenia, neutropenia, pancreatitis, pancytopenia (with bone marrow suppression identified in some of these cases), thrombocytopenia, and weight loss. Alopecia has been reported with levetiracetam use; recovery was observed in majority of cases where levetiracetam was discontinued. There have been reports of suicidal behavior (including completed suicide, suicide attempt and suicidal ideation) with marketed levetiracetam (see PRECAUTIONS, Information For Patients). These adverse experiences have not been listed above, and data are insufficient to support an estimate of their incidence or to establish causation.

### **DRUG ABUSE AND DEPENDENCE**

The abuse and dependence potential of levetiracetam has not been evaluated in human studies.

### **OVERDOSAGE**

#### **Signs, Symptoms And Laboratory Findings Of Acute Overdosage In Humans**

The highest known dose of levetiracetam received in the clinical development program was 6000 mg/day. Other than drowsiness, there were no adverse events in the few known cases of overdose in clinical trials. Cases of somnolence, agitation, aggression, depressed level of consciousness, respiratory depression and coma were observed with levetiracetam overdoses in postmarketing use.

#### **Treatment Or Management Of Overdose**

There is no specific antidote for overdose with levetiracetam. If indicated, elimination of unabsorbed drug should be attempted by emesis or gastric lavage; usual precautions should be observed to maintain airway. General supportive care of the patient is indicated including monitoring of vital signs and observation of the patient's clinical status. A Certified Poison Control Center should be contacted for up to date information on the management of overdose with levetiracetam.

### **Hemodialysis**

Standard hemodialysis procedures result in significant clearance of levetiracetam (approximately 50% in 4 hours) and should be considered in cases of overdose. Although hemodialysis has not been performed in the few known cases of overdose, it may be indicated by the patient's clinical state or in patients with significant renal impairment.

## DOSAGE AND ADMINISTRATION

Levetiracetam is indicated as adjunctive treatment of partial onset seizures in adults and children 4 years of age and older with epilepsy.

### Partial Onset Seizures

#### Adults 16 Years And Older

In clinical trials, daily doses of 1000 mg, 2000 mg, and 3000 mg, given as twice daily dosing, were shown to be effective. Although in some studies there was a tendency toward greater response with higher dose (see **CLINICAL STUDIES**), a consistent increase in response with increased dose has not been shown.

Treatment should be initiated with a daily dose of 1000 mg/day, given as twice-daily dosing (500 mg BID). Additional dosing increments may be given (1000 mg/day additional every 2 weeks) to a maximum recommended daily dose of 3000 mg. Doses greater than 3000 mg/day have been used in open-label studies for periods of 6 months and longer. There is no evidence that doses greater than 3000 mg/day confer additional benefit.

#### Pediatric Patients Ages 4 To <16 Years

Treatment should be initiated with a daily dose of 20 mg/kg in 2 divided doses (10 mg/kg BID). The daily dose should be increased every 2 weeks by increments of 20 mg/kg to the recommended daily dose of 60 mg/kg (30 mg/kg BID). If a patient cannot tolerate a daily dose of 60 mg/kg, the daily dose may be reduced. In the clinical trial, the mean daily dose was 52 mg/kg. Patients with body weight  $\leq$ 20 kg should be dosed with oral solution. Patients with body weight above 20 kg can be dosed with either tablets or oral solution. Table 9 below provides a guideline for tablet dosing based on weight during titration to 60 mg/kg/day. Only whole tablets should be administered.

Levetiracetam is given orally with or without food.

Patient Weight	Daily Dose		
	20 mg/kg/day (BID dosing)	40 mg/kg/day (BID dosing)	60 mg/kg/day (BID dosing)
20.1-40 kg	500 mg/day (1 x 250 mg tablet BID)	1000 mg/day (1 x 500 mg tablet BID)	1500 mg/day (1 x 750 mg tablet BID)
>40 kg	1000 mg/day (1 x 500 mg tablet BID)	2000 mg/day (2 x 500 mg tablets BID)	3000 mg/day (2 x 750 mg tablets BID)

**Table 9: Levetiracetam Tablet Weight-Based Dosing Guide For Children**

The following calculation should be used to determine the appropriate daily dose of oral solution for pediatric patients based on a daily dose of 20 mg/kg/day, 40 mg/kg/day or 60 mg/kg/day:

$$\text{Total daily dose (mL/day)} = \frac{\text{Daily dose (mg/kg/day)} \times \text{patient weight (kg)}}{100 \text{ mg/mL}}$$

A household teaspoon or tablespoon is not an adequate measuring device. It is recommended that a calibrated measuring device be obtained and used. Healthcare providers should recommend a device that can measure and deliver the prescribed dose accurately, and provide instructions for measuring the dosage.

### Adult Patients With Impaired Renal Function

Levetiracetam dosing must be individualized according to the patient's renal function status. Recommended doses and adjustment for dose for adults are shown in Table 10. To use this dosing table, an estimate of the patient's creatinine clearance (CLcr) in mL/min is needed. CLcr in mL/min may be estimated from serum creatinine (mg/dL) determination using the following formula:

$$\text{CLcr} = \frac{[140 - \text{age (years)}] \times \text{weight (kg)}}{72 \times \text{serum creatinine (mg/dL)}} \quad (\times 0.85 \text{ for female patients})$$

Group	Creatinine Clearance (mL/min)	Dosage (mg)	Frequency
Normal	> 80	500 to 1,500	Every 12 h
Mild	50 – 80	500 to 1,000	Every 12 h
Moderate	30 – 50	250 to 750	Every 12 h
Severe	< 30	250 to 500	Every 12 h
ESRD patients using dialysis	—	500 to 1,000	Every 12 h

1 Following dialysis, a 250 to 500 mg supplemental dose is recommended

**Table 10: Dosing Adjustment Regimen For Adult Patients With Impaired Renal Function**

### HOW SUPPLIED

Levetiracetam tablets, 250 mg are Blue film coated, Capsule shaped, biconvex tablets debossed with **I** on the left side of bisect and **G** on the right side of bisect on one side and **246** on other.

Levetiracetam tablets, 500 mg are Yellow film coated, Capsule shaped, biconvex tablets debossed with **I** on the left side of bisect and **G** on the right side of bisect on one side and **247** on other.

Levetiracetam tablets, 750 mg are Pink film coated, Capsule shaped, biconvex tablets debossed with **I** on the left side of bisect and **G** on the right side of bisect on one side and **248** on other.

They are supplied by **State of Florida DOH Central Pharmacy** as follows:

NDC	Strength	Quantity/Form	Color	Source Prod. Code
53808-0377-1	500 mg	30 Tablets in a Blister Pack	YELLOW	68462-546

---

## Storage

Store at 25°C (77°F); excursions permitted to 15°C to 30°C (59° F to 86°F) [see USP Controlled Room Temperature].

Dispense in a tight, light-resistant container with a child-resistant closure.

## PATIENT INFORMATION

### Levetiracetam tablets

Read the Patient Information that comes with levetiracetam before you start using it and each time you get a refill. There may be new information. This leaflet does not take the place of talking with your healthcare provider about your condition or your treatment.

Before taking your medicine, make sure you have received the correct medicine. Compare the name above with the name on your bottle and the appearance of your medicine with the description of levetiracetam provided below. Contact your pharmacist immediately if you believe a dispensing error may have occurred.

250 mg Levetiracetam tablets are Blue film coated, Capsule shaped, biconvex tablets de-bossed with **I** on the left side of bisect and **G** on the right side of bisect on one side and **246** on other.

500 mg Levetiracetam tablets are Yellow film coated, Capsule shaped, biconvex tablets debossed with **I** on the left side of bisect and **G** on the right side of bisect on one side and **247** on other.

750 mg Levetiracetam tablets are Pink film coated, Capsule shaped, biconvex tablets debossed with **I** on the left side of bisect and **G** on the right side of bisect on one side and **248** on other.

### What is levetiracetam?

Levetiracetam is a medicine taken by mouth that is used with other medicines to treat:

- partial onset seizures in patients 4 years of age and older with epilepsy

### Who should not take levetiracetam?

Do not take levetiracetam if you are allergic to any of its ingredients. The active ingredient is levetiracetam. See the end of this leaflet for a list of all the ingredients in levetiracetam.

### What should I tell my healthcare provider before starting levetiracetam?

**Tell your healthcare provider about all of your medical conditions, including if you:**

- **have kidney disease.** You may need a lower dose of levetiracetam.
- **are pregnant or planning to become pregnant.** It is not known if levetiracetam can harm your unborn baby.

You may also join the North American Antiepileptic Drug Pregnancy Registry by calling (888) 233-2334 (toll free).

- **are breast feeding.** Levetiracetam can pass into your milk and may harm your baby. You should choose to either take levetiracetam or breast feed, but not both.

Tell your healthcare provider about all the medicines you take, including prescription, nonprescription, vitamins, and herbal supplements.

Know the medicines you take. Keep a list of them to show your healthcare provider and pharmacist each time you get a new medicine.

### How should I take levetiracetam?

- Take levetiracetam exactly as prescribed. Levetiracetam is usually taken twice a day. Once in the morning and once at night. Take levetiracetam at the same times each day.
- Your healthcare provider may start you on a lower dose of levetiracetam and increase it as your body gets used to the medicine.
- Take levetiracetam with or without food. Swallow the tablets whole. Do not chew or crush tablets. Use the levetiracetam oral solution if you cannot swallow tablets. Use a medicine dropper or medicine cup to measure levetiracetam oral solution. Do not use a teaspoon. Ask your pharmacist for a medicine dropper or medicine cup to help you measure levetiracetam. If your healthcare provider has given you levetiracetam oral solution for your child, be sure to ask your pharmacist for a medicine syringe to help you measure the correct amount of levetiracetam oral solution. Ask your pharmacist for instructions on how to properly use the medicine syringe or dosing device that has been provided to you.
- If you miss a dose of levetiracetam, do not double your next dose to make up for the missed dose. If it has only been a few hours since your missed dose, take levetiracetam as soon as you remember then return to your regular schedule. If it is almost time for the next dose, skip the missed dose and resume your regular schedule. Talk with your healthcare provider for more detailed instructions.
- If you take too much levetiracetam or overdose, call your local Poison Control Center or emergency room right away.
- Do not stop taking levetiracetam or any other seizure medicine unless your healthcare provider told you to. Stopping a seizure medicine all at once can cause seizures that will not stop (status epilepticus), a very serious problem.
- Tell your healthcare provider if your seizures get worse or if you have any new types of seizures.

### **What should I avoid while taking levetiracetam?**

Do not drive, operate machinery or do other dangerous activities until you know how levetiracetam affects you. Levetiracetam may make you dizzy or sleepy.

### **What are the possible side effects of levetiracetam?**

#### **Adults**

**Levetiracetam may cause the following serious problems in adults. Call your healthcare provider right away if you get any of the following symptoms:**

- extreme sleepiness, tiredness, and weakness
- problems with muscle coordination (problems walking and moving)
- mood and behavior changes such as aggression, agitation, anger, anxiety, apathy, mood swings, depression, hostility, and irritability. A few people may get psychotic symptoms such as hallucinations (seeing or hearing things that are really not there), delusions (false or strange thoughts or beliefs) and unusual behavior.
- thoughts of suicide (thoughts of killing yourself)

**The most common side effects with levetiracetam in adults are:**

- sleepiness
- weakness
- dizziness
- infection

These side effects could happen at any time but happen most often within the first four weeks of treatment except for infection.

#### **Children**

**Levetiracetam may cause the following serious problems in children. Call your child's healthcare provider right away if they get any of the following symptoms:**



- • extreme sleepiness, tiredness, and weakness
- • mood and behavior changes such as aggression, agitation, anger, anxiety, apathy, depression, hostility, and irritability
- • thoughts of suicide

**The most common side effects with levetiracetam in children, in addition to those seen in adults are:**

- sleepiness
- accidental injury
- hostility
- irritability
- weakness

These side effects could happen at any time.

These are not all the side effects of levetiracetam. For more information, ask your healthcare provider or pharmacist. If you get any side effects that concern you, call your healthcare provider.

### **How should I store levetiracetam?**

- Store levetiracetam at room temperature away from heat and light.
- Keep levetiracetam and all medicines out of the reach of children.

### **General information about levetiracetam.**

Medicines are sometimes prescribed for conditions other than those described in patient information leaflets. Do not use levetiracetam for a condition for which it was not prescribed. Do not give your levetiracetam to other people, even if they have the same symptoms that you have. It may harm them.

This leaflet summarizes the most important information about levetiracetam. If you would like more information, talk with your healthcare provider. You can ask your healthcare provider or pharmacist for information about levetiracetam that is written for healthcare professionals.

### **What are the ingredients of levetiracetam?**

Levetiracetam tablets contain the labeled amount of levetiracetam. Inactive ingredients: colloidal silicon dioxide, corn starch, hydroxypropyl methylcellulose, magnesium stearate, polyethylene glycol 4000, povidone, talc, titanium dioxide and coloring agents.

The individual tablets contain the following coloring agents:

250 mg tablets: FD&C Blue #2, Indigo Carmine Aluminum Lake

500 mg tablets: Iron oxide Yellow

750 mg tablets: Iron oxide yellow and Iron oxide red

Levetiracetam does not contain lactose or gluten.

### **Rx Only**

Call your doctor for medical advice about side effects. You may report side effects to FDA at 1-800-FDA 1088

This patient leaflet has been approved by the US Food and Drug Administration.

Manufactured By:

InvaGen Pharmaceuticals, Inc.  
Hauppauge, NY 11788

Manufactured For:



Glenmark Generics Inc., USA  
Mahwah, NJ 07430

Questions? 1(888)721-7115  
www.glenmarkgenerics.com

This Product was Repackaged By:

**State of Florida DOH Central Pharmacy**  
104-2 Hamilton Park Drive  
Tallahassee, FL 32304  
United States

### Principal Display Panel

## LEVETIRACETAM

levetiracetam tablet, film coated

### Product Information

<b>Product Type</b>	HUMAN PRESCRIPTION DRUG	<b>Item Code (Source)</b>	NDC:53808-0377(NDC:68462-546)
<b>Route of Administration</b>	ORAL		

### Active Ingredient/Active Moiety

Ingredient Name	Basis of Strength	Strength
LEVETIRACETAM (UNII: 44YRR34555) (LEVETIRACETAM - UNII:44YRR34555)	LEVETIRACETAM	500 mg

### Inactive Ingredients

Ingredient Name	Strength
HYPROMELLOSE (UNII: 3NXW29V3WO)	
POLYETHYLENE GLYCOL 4000 (UNII: 4R4HF16D95)	
TITANIUM DIOXIDE (UNII: 15FIX9V2JP)	
FERRIC OXIDE YELLOW (UNII: EX438O2MRT)	
SILICON DIOXIDE (UNII: ETJ7Z6XBU4)	
STARCH, CORN (UNII: O8232NY3SJ)	
MAGNESIUM STEARATE (UNII: 70097M6I30)	
POVIDONE (UNII: FZ989GH94E)	
TALC (UNII: 7SEV7J4R1U)	

### Product Characteristics

Color	YELLOW	Score	2 pieces
Shape	CAPSULE	Size	17mm
Flavor		Imprint Code	IG;247
Contains			

### Packaging

#	Item Code	Package Description	Marketing Start Date	Marketing End Date
1	NDC:53808-0377-1	30 in 1 BLISTER PACK		

### Marketing Information

Marketing Category	Application Number or Monograph Citation	Marketing Start Date	Marketing End Date
ANDA	ANDA078234	07/01/2009	

**Labeler** - State of Florida DOH Central Pharmacy (829348114)

### Establishment

Name	Address	ID/FEI	Business Operations
State of Florida DOH Central Pharmacy		829348114	repack