

SF CHERRY COUGH DROP- menthol lozenge

Cardinal Health

Menthol 5.8 mg

Active ingredient (in each drop)

Menthol 5.8 mg

Purpose

Cough suppressant / Oral anesthetic

Uses temporarily relieves:

cough as may occur with a cold

occasional minor irritation and sore throat

Warnings

Sore throat warning: if sore throat is severe, persists for more than 2 days, is accompanied or followed by fever, headache, rash, swelling, nausea, or vomiting, consult a doctor promptly. If sore mouth symptoms do not improve in 7 days, see your dentist or doctor promptly. These symptoms may be serious.

Ask a doctor before use if you have:

- persistent or chronic cough such as occurs with smoking, asthma, or emphysema
- cough accompanied by excessvie phlegm (mucus)

Stop use and ask doctor if

- cough persists for more than 7 days, tends to recur, or is accompanied by fever, rash, or persistent headache. These could be signs of a serious condition.
- sore throat is severe, or irritation, pain or redness lasts or worsens
- sore mouth does not improve in 7 days

If pregnant or breast-feeding, ask a health professional before use.

Keep out of reach of children.

Directions

adults and children 5 years and over allow 1 drop to dissolve slowly in mouth. May be repeated every two hours as necessary or as directed by a doctor.

children under 5 years ask a doctor

Other information

- 6 calories per drop
- Excess consumption may cause a laxitative effect.

Inactive ingredients: Acesulfame potassium (non-nutritive sweetner), artificial flavor, corn starch, eucalyptus oil, FD&C blue no. 1, FD&C red no. 40, glycerin, isomalt, maltitol syrup, medium chain triglycerides, soybean oil, sucralose (non-nutritive sweetner), and water.

Questions? Or to report an adverse event call **1-800-245-2898**. Monday - Friday,
9AM to 4PM EST

Do not use if bag
is torn or open



Top Seal Area
Resealable Bag

◀ Tear here

Tear here ▶

Zipper Area

LEADER ™

NDC 70000-0290-1

Sugar Free

Cough Drops

Menthol | Cough Suppressant
Oral Anesthetic



Black Cherry

Side Seal Area

Side Seal Area

Flavor

Soothes sore throat pain
Temporarily relieves cough

25 DROPS

COMPARE TO
HALLS®
active ingredient*

100% Money
Back Guarantee



©2017 Cardinal Health. All Rights Reserved. CARDINAL HEALTH, the Cardinal Health logo, LEADER and the leader logo are trademarks or registered trademarks of Cardinal Health. All other marks are the property of their respective owners.

*This product is not manufactured or distributed by Mondelez Global LLC, owner of the registered trademark HALLS®.

All LEADER® Brand Products Have A
100% Money Back Guarantee

Essential to Care™ since 1979
www.myleader.com 1-800-200-6313

DUBLIN, OHIO 43017
DISTRIBUTED BY CARDINAL HEALTH

CardinalHealth™

Black Cherry
Flavor

Menthol | Cough Suppressant
Oral Anesthetic

Directions
adults and children 5 years and over
allow 1 drop to dissolve slowly in mouth. May be repeated every two hours as necessary or as directed by a doctor.
children under 5 years ask a doctor

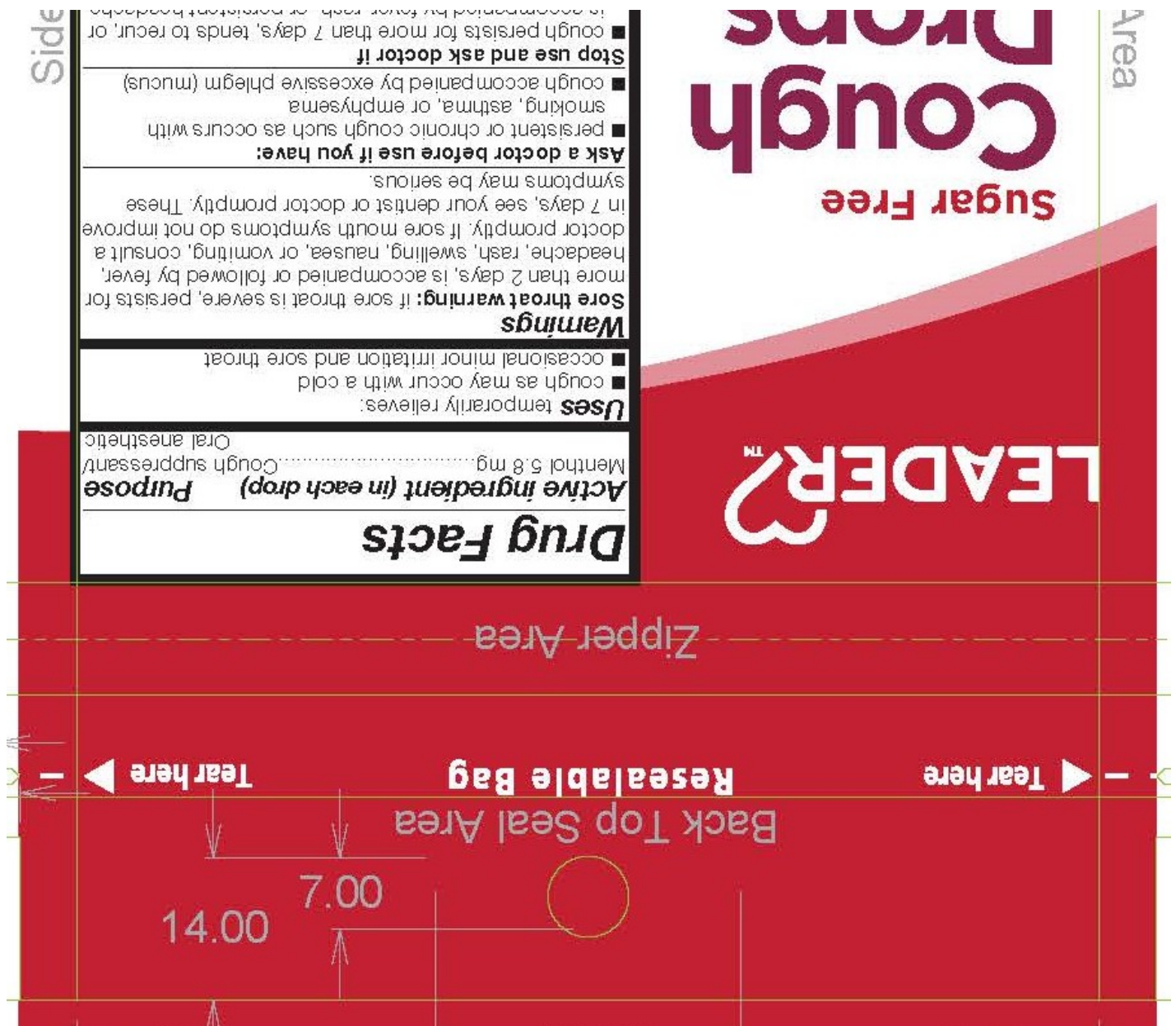
Other information ■ 6 calories per drop
■ Excess consumption may cause a laxative effect.

Inactive ingredients: Acesulfame potassium (non-nutritive sweetener), artificial flavor, corn starch, eucalyptus oil, FD&C blue no. 1, FD&C red no. 40, glycerin, isomalt, maltitol syrup, medium chain triglycerides, soybean oil, sucralose (non-nutritive sweetener) and water.

Questions? Or to report an adverse event call 1-800-245-2898. Monday - Friday, 9AM to 4PM EST

Seal Area

Side Seal



SF CHERRY COUGH DROP

menthol lozenge

Product Information

Product Type	HUMAN OTC DRUG	Item Code (Source)	NDC:70000-0290
Route of Administration	ORAL		

Active Ingredient/Active Moiety

Ingredient Name	Basis of Strength	Strength
MENTHOL (UNII: L7T10EIP3A) (MENTHOL - UNII:L7T10EIP3A)	MENTHOL	5.8 mg

Inactive Ingredients

Ingredient Name	Strength
-----------------	----------

WATER (UNII: 059QF0KO0R)

Product Characteristics

Color	red (Maroon)	Score	score with uneven pieces
Shape	OVAL	Size	17mm
Flavor	CHERRY (Black Cherry)	Imprint Code	B
Contains			

Packaging

#	Item Code	Package Description	Marketing Start Date	Marketing End Date
1	NDC:70000-0290-1	25 in 1 BAG; Type 0: Not a Combination Product	03/07/2017	



Marketing Information

Marketing Category	Application Number or Monograph Citation	Marketing Start Date	Marketing End Date
OTC Monograph Drug	M012	03/07/2017	

Labeler - Cardinal Health (063997360)

Registrant - BestCo Inc. (002149136)

Establishment

Name	Address	ID/FEI	Business Operations
BestCo Inc.		002149136	manufacture(70000-0290)

Revised: 10/2023

Cardinal Health