

NEXPLANON- etonogestrel implant

Organon LLC

HIGHLIGHTS OF PRESCRIBING INFORMATION

These highlights do not include all the information needed to use NEXPLANON safely and effectively. See full prescribing information for NEXPLANON.

NEXPLANON® (etonogestrel implant), for subdermal use

Radiopaque

Initial U.S. Approval: 2001

WARNING: RISK OF COMPLICATIONS DUE TO IMPROPER INSERTION and REMOVAL

- **Improper insertion of NEXPLANON increases the risk of complications [see Warnings and Precautions (5.1)].**
- **Proper training prior to first use of NEXPLANON can minimize the risk of improper NEXPLANON insertion [see Warnings and Precautions (5.1)].**
- **NEXPLANON is available only through a restricted program under a Risk Evaluation and Mitigation Strategy (REMS) called the NEXPLANON REMS [see Warnings and Precautions (5.2)].**

-----RECENT MAJOR CHANGES-----

Indications and Usage (1)	01/2026
Dosage and Administration (2)	01/2026
Warnings and Precautions (5.1, 5.2)	01/2026

-----INDICATIONS AND USAGE-----

NEXPLANON is a progestin indicated for prevention of pregnancy in women of reproductive potential for up to 5 years. (1)

-----DOSAGE AND ADMINISTRATION-----

Insert one NEXPLANON subdermally just under the skin at the inner side of the non-dominant upper arm. NEXPLANON must be removed no later than by the end of the fifth year. (2)

-----DOSAGE FORMS AND STRENGTHS-----

NEXPLANON consists of a single, radiopaque, rod-shaped implant, containing 68 mg etonogestrel, pre-loaded in the needle of a disposable applicator. (3)

-----CONTRAINDICATIONS-----

- Known or suspected pregnancy. (4)
- Current or past history of thrombosis or thromboembolic disorders. (4, 5.5)
- Liver tumors, benign or malignant, or active liver disease. (4, 5.8)
- Undiagnosed abnormal uterine bleeding. (4, 5.3)
- Known or suspected breast cancer, personal history of breast cancer, or other progestin-sensitive cancer, now or in the past. (4, 5.7)
- Allergic reaction to any of the components of NEXPLANON. (4, 6)

-----WARNINGS AND PRECAUTIONS-----

- Insertion and removal complications: Pain, paresthesia, bleeding, hematoma, scarring, infection, or migration to vasculature, including pulmonary vessels, may occur. Symptoms associated with implants in pulmonary vessels include chest pain, dyspnea, cough, or hemoptysis. Surgical interventions may be necessary to remove implants. (5.1)
- Menstrual bleeding pattern: Counsel women regarding changes in bleeding frequency, intensity, or duration. (5.3)
- Ectopic pregnancies: Be alert to the possibility of an ectopic pregnancy in women using NEXPLANON who become pregnant or complain of lower abdominal pain. (5.4)
- Thrombotic and other vascular events: The NEXPLANON implant should be removed in the event of a thrombosis. (5.5)
- Liver disease: Remove the NEXPLANON implant if jaundice occurs. (5.8)

- Elevated blood pressure: The NEXPLANON implant should be removed if blood pressure rises significantly and becomes uncontrolled. (5.10)
- Carbohydrate and lipid metabolic effects: Monitor prediabetic and diabetic women using NEXPLANON. (5.12)

-----ADVERSE REACTIONS-----

Most common ($\geq 10\%$) adverse reactions reported in clinical trials were change in menstrual bleeding pattern, headache, vaginitis, weight increase, acne, breast pain, abdominal pain, and pharyngitis. (6.1)

To report SUSPECTED ADVERSE REACTIONS, contact Organon USA LLC, a subsidiary of Organon & Co., at 1-844-674-3200 or FDA at 1-800-FDA-1088 or www.fda.gov/medwatch.

-----DRUG INTERACTIONS-----

Drugs or herbal products that induce certain enzymes, such as CYP3A4, may decrease the effectiveness of progestin hormonal contraceptives or increase breakthrough bleeding. (7.1)

-----USE IN SPECIFIC POPULATIONS-----

- Pregnancy: Discontinue if maintaining a pregnancy. (8.1)

See 17 for PATIENT COUNSELING INFORMATION and FDA-approved patient labeling.

Revised: 5/2026

FULL PRESCRIBING INFORMATION: CONTENTS*

WARNING: RISK OF COMPLICATIONS DUE TO IMPROPER INSERTION and REMOVAL

1 INDICATIONS AND USAGE

2 DOSAGE AND ADMINISTRATION

- 2.1 Initiating Contraception with NEXPLANON
- 2.2 Insertion of NEXPLANON
- 2.3 Removal of NEXPLANON
- 2.4 Replacing NEXPLANON

3 DOSAGE FORMS AND STRENGTHS

4 CONTRAINDICATIONS

5 WARNINGS AND PRECAUTIONS

- 5.1 Risk of Complications Due to Improper Insertion and Removal
- 5.2 NEXPLANON REMS
- 5.3 Changes in Menstrual Bleeding Patterns
- 5.4 Ectopic Pregnancies
- 5.5 Thrombotic and Other Vascular Events
- 5.6 Ovarian Cysts
- 5.7 Carcinoma of the Breast and Reproductive Organs
- 5.8 Liver Disease
- 5.9 Weight Gain
- 5.10 Elevated Blood Pressure
- 5.11 Gallbladder Disease
- 5.12 Carbohydrate and Lipid Metabolic Effects
- 5.13 Depressed Mood
- 5.14 Return to Ovulation
- 5.15 Fluid Retention
- 5.16 Contact Lenses
- 5.17 Monitoring
- 5.18 Drug-Laboratory Test Interactions

6 ADVERSE REACTIONS

- 6.1 Clinical Trials Experience
- 6.2 Postmarketing Experience

7 DRUG INTERACTIONS

- 7.1 Effects of Other Drugs on Hormonal Contraceptives
- 7.2 Effects of Hormonal Contraceptives on Other Drugs

8 USE IN SPECIFIC POPULATIONS

- 8.1 Pregnancy
- 8.2 Lactation
- 8.4 Pediatric Use
- 8.5 Geriatric Use
- 8.6 Hepatic Impairment

10 OVERDOSAGE

11 DESCRIPTION

12 CLINICAL PHARMACOLOGY

- 12.1 Mechanism of Action
- 12.2 Pharmacodynamics
- 12.3 Pharmacokinetics

13 NONCLINICAL TOXICOLOGY

- 13.1 Carcinogenesis, Mutagenesis, Impairment of Fertility

14 CLINICAL STUDIES

- 14.1 Pregnancy
- 14.2 Return to Ovulation
- 14.3 Implant Insertion and Removal Characteristics

16 HOW SUPPLIED/STORAGE AND HANDLING

- 16.1 How Supplied
- 16.2 Storage and Handling

17 PATIENT COUNSELING INFORMATION

* Sections or subsections omitted from the full prescribing information are not listed.

FULL PRESCRIBING INFORMATION

WARNING: RISK OF COMPLICATIONS DUE TO IMPROPER INSERTION and REMOVAL

- **Improper insertion of NEXPLANON increases the risk of complications [see *Warnings and Precautions (5.1)*].**
- **Proper training prior to first use of NEXPLANON can minimize the risk of improper NEXPLANON insertion [see *Warnings and Precautions (5.1)*].**
- **Because of the risk of complications due to improper insertion and removal NEXPLANON is available only through a restricted program under a Risk Evaluation and Mitigation Strategy (REMS) called the NEXPLANON REMS [see *Warnings and Precautions (5.2)*].**

1 INDICATIONS AND USAGE

NEXPLANON® is indicated for prevention of pregnancy in women of reproductive potential for up to 5 years.

2 DOSAGE AND ADMINISTRATION

The efficacy of NEXPLANON does not depend on daily, weekly, or monthly administration.

All healthcare professionals should receive instruction and training prior to performing insertion and/or removal of NEXPLANON.

A single NEXPLANON implant is inserted subdermally just under the skin at the inner side of the non-dominant upper arm. The insertion site is overlying the triceps muscle about 8-10 cm (3-4 inches) from the medial epicondyle of the humerus and 3-5 cm (1.25-2 inches) posterior to (below) the sulcus (groove) between the biceps and triceps muscles. This location is intended to avoid the large blood vessels and nerves lying within and surrounding the sulcus (see Figures 2a, 2b and 2c). Inserting an implant more deeply than subdermally (a deep insertion) may preclude palpation and localization, making removal difficult or impossible [see *Dosage and Administration (2.3) and Warnings and Precautions (5.1)*].

NEXPLANON must be inserted by the expiration date stated on the packaging. NEXPLANON is a long-acting (up to 5 years), reversible, hormonal contraceptive method. The implant must be removed by the end of the fifth year and may be replaced by a new implant at the time of removal, if continued contraceptive protection is desired.

2.1 Initiating Contraception with NEXPLANON

IMPORTANT: Rule out pregnancy before inserting the implant.

Timing of insertion depends on the woman's recent contraceptive history, as follows:

- No preceding hormonal contraceptive use in the past month

NEXPLANON should be inserted between Day 1 (first day of menstrual bleeding) and Day 5 of the menstrual cycle, even if the woman is still bleeding.

If inserted as recommended, back-up contraception is not necessary. If deviating from the recommended timing of insertion, the woman should be advised to use a barrier method until 7 days after insertion. If intercourse has already occurred, pregnancy should be excluded.

- Switching contraceptive method to NEXPLANON

Combination hormonal contraceptives:

NEXPLANON should preferably be inserted on the day after the last active tablet of the previous combined oral contraceptive or on the day of removal of the vaginal ring or transdermal patch. At the latest, NEXPLANON should be inserted on the day following the usual tablet-free, ring-free, patch-free or placebo tablet interval of the previous combined hormonal contraceptive.

If inserted as recommended, back-up contraception is not necessary. If deviating from the recommended timing of insertion, the woman should be advised to use a barrier

method until 7 days after insertion. If intercourse has already occurred, pregnancy should be excluded.

Progestin-only contraceptives:

There are several types of progestin-only methods. NEXPLANON should be inserted as follows:

- **Injectable Contraceptives:** Insert NEXPLANON on the day the next injection is due.
- **Minipill:** A woman may switch to NEXPLANON on any day of the month. NEXPLANON should be inserted within 24 hours after taking the last tablet.
- **Contraceptive implant or intrauterine system (IUS):** Insert NEXPLANON on the same day the previous contraceptive implant or IUS is removed.

If inserted as recommended, back-up contraception is not necessary. If deviating from the recommended timing of insertion, the woman should be advised to use a barrier method until 7 days after insertion. If intercourse has already occurred, pregnancy should be excluded.

- Following abortion or miscarriage
 - **First Trimester:** NEXPLANON should be inserted within 5 days following a first trimester abortion or miscarriage.
 - **Second Trimester:** Insert NEXPLANON between 21 to 28 days following second trimester abortion or miscarriage.

If inserted as recommended, back-up contraception is not necessary. If deviating from the recommended timing of insertion, the woman should be advised to use a barrier method until 7 days after insertion. If intercourse has already occurred, pregnancy should be excluded.

- Postpartum
 - Not Breastfeeding: NEXPLANON should be inserted between 21 to 28 days postpartum. If inserted as recommended, back-up contraception is not necessary. If deviating from the recommended timing of insertion, the woman should be advised to use a barrier method until 7 days after insertion. If intercourse has already occurred, pregnancy should be excluded.
 - Breastfeeding: NEXPLANON should not be inserted until after the fourth postpartum week. The woman should be advised to use a barrier method until 7 days after insertion. If intercourse has already occurred, pregnancy should be excluded.

2.2 Insertion of NEXPLANON

The basis for successful use and subsequent removal of NEXPLANON is a correct and carefully performed subdermal insertion of the single, rod-shaped implant in accordance with the instructions. Both the healthcare professional and the woman should be able to feel the implant under the skin after placement.

All healthcare professionals performing insertions and/or removals of NEXPLANON must receive instructions and training prior to inserting or removing the implant.

Preparation

Before inserting NEXPLANON, complete training which includes carefully reading the instructions for insertion as well as the full prescribing

information [see Warnings and Precautions (5.2)]. If you are unsure of the necessary steps to safely insert and/or remove NEXPLANON, do not attempt the procedure.

Call the Organon Service Center at 1-844-674-3200 if you have any questions. Videos demonstrating insertion and removal are available online for trained healthcare professionals (www.NEXPLANONREMS.com).

Before insertion of NEXPLANON, the healthcare professional should confirm that:

- The woman is not pregnant and has no other contraindication for the use of NEXPLANON [see *Contraindications (4)*].
- The woman has had a medical history and physical examination, including a gynecologic examination, performed.
- The woman understands the benefits and risks of NEXPLANON.
- The woman has received a copy of the Patient Labeling included in packaging.
- The woman does not have allergies to the antiseptic and anesthetic to be used during insertion.

Insert NEXPLANON under aseptic conditions.

The following equipment is needed for the implant insertion:

- An examination table for the woman to lie on
- Sterile surgical drapes, sterile gloves, antiseptic solution, surgical marker
- Local anesthetic, needles, and syringe
- Sterile gauze, adhesive bandage, pressure bandage

Insertion Procedure

To help make sure the implant is inserted just under the skin, the healthcare professionals should be positioned to see the advancement of the needle by viewing the applicator from the side and not from above the arm. From the side view, the insertion site and the movement of the needle just under the skin can be clearly visualized.

For illustrative purposes, Figures depict the left inner arm.

Step 1. Have the woman lie on her back on the examination table with her non-dominant arm flexed at the elbow and externally rotated so that her hand is underneath her head (or as close as possible) (Figure 1).

Figure 1



Step 2. Identify the insertion site, which is at the inner side of the non-dominant upper arm. The insertion site is overlying the triceps muscle about 8-10 cm (3-4 inches) from the medial epicondyle of the humerus and 3-5 cm (1.25-2 inches) posterior to (below) the sulcus (groove) between the biceps and triceps muscles (Figures 2a, 2b and 2c). This location is intended to avoid the large blood vessels and nerves lying within and surrounding the sulcus. If it is not possible to insert the implant in this location (e.g., in women with thin arms), it should be inserted as far posterior from the sulcus as possible. *[See Warnings and Precautions (5.1).]*

Step 3. Make two marks with a surgical marker: first, mark the spot where the etonogestrel implant will be inserted, and second, mark a spot at 5 centimeters (2 inches) proximal (toward the shoulder) to the first mark (Figure 2a and 2b). This second mark (guiding mark) will later serve as a direction guide during insertion.

Figure 2a

**P - Proximal (toward the shoulder)
D - Distal (toward the elbow)**

Figure 2b

**Figure 2c: Cross section
of the upper left arm,
as viewed from the
elbow
Medial (inner side of the
arm)**

Lateral (outer side of the arm)

Step 4. After marking the arm, confirm the site is in the correct location on the inner side of the arm.

Step 5. Clean the skin from the insertion site to the guiding mark with an antiseptic solution.

Step 6. Anesthetize the insertion area (for example, with anesthetic spray or by injecting 2 mL of 1% lidocaine just under the skin along the planned insertion tunnel).

Step 7. Remove the sterile preloaded disposable NEXPLANON applicator containing the implant from its blister packaging. Prior to use, visually inspect the packaging for breaches of integrity or damage (e.g., torn, punctured, etc.). If the packaging has any visual damage that could compromise sterility, do not use the product.

Step 8. Hold the applicator just above the needle at the textured surface area. Remove the transparent protection cap by sliding it horizontally in the direction of the arrow away from the needle (Figure 3). If the cap does not come off easily, the applicator should not be used. You should see the white colored implant by looking into the tip of the needle. **Do not touch the purple slider until you have fully inserted the needle subdermally, as doing so will retract the needle and prematurely release the implant from the applicator.**

Step 9. If the purple slider is released prematurely, restart the procedure with a new applicator.

Figure 3

Step 10. With your free hand, stretch the skin around the insertion site towards the elbow (Figure 4).

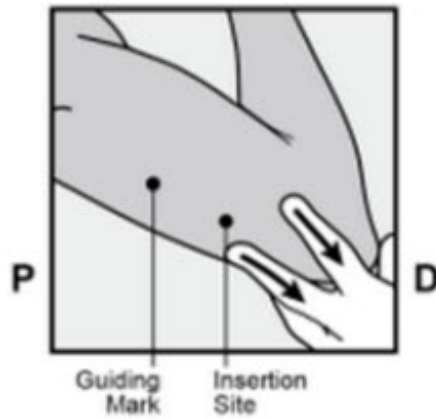


Figure 4

Step 11. **The implant should be inserted subdermally just under the skin** [see *Warnings and Precautions (5.1)*].

To help make sure the implant is inserted just under the skin, you should position yourself to see the advancement of the needle by viewing the applicator from the side and not from above the arm. From the side view (see Figure 6), you can clearly see the insertion site and the movement of the needle just under the skin.

Step 12. Puncture the skin with the tip of the needle slightly angled less than 30° (Figure 5a).

Figure 5a



Step 13. Insert the needle until the bevel (slanted opening of the tip) is just under the skin (and no further) (Figure 5b). If you inserted the needle deeper than the bevel, withdraw the needle until only the bevel is beneath the skin.

Figure 5b

Step 14. Lower the applicator to a nearly horizontal position. To facilitate subdermal placement, lift the skin with the needle while sliding the needle to its full length (Figure 6). You may feel slight resistance but do not exert excessive force. **If the needle is not inserted to its full length, the implant will not be inserted properly.**

If the needle tip emerges from the skin before needle insertion is complete, the needle should be pulled back and be readjusted to subdermal position before completing the insertion procedure.

Figure 6

Step 15. Keep the applicator in the same position with the needle inserted to its full length (Figure 7). If needed, you may use your free hand to stabilize the applicator. Unlock the purple slider by pushing it slightly down (Figure 8a). Move the slider fully back until it stops. **Do not move the applicator while moving the purple slider** (Figure 8b). The implant is now in its final subdermal position, and the needle is locked inside the body of the applicator. The applicator can now be removed (Figure 8c).

Figure 7

Figure 8a

Figure 8b

Figure 8c

If the applicator is not kept in the same position during this procedure or if the purple slider is not moved fully back until it stops, the implant will not be inserted properly and may protrude from the insertion site.

If the implant is protruding from the insertion site, remove the implant and perform a new procedure at the same insertion site using a new applicator. **Do not push the protruding implant back into the incision.**

Step 16. Apply a small adhesive bandage over the insertion site.

Step 17. **Always verify the presence of the implant in the woman's arm immediately after insertion by palpation.** By palpating both ends of the implant, you should be able to confirm the presence of the 4 cm rod (Figure 9). See "If the rod is not palpable after insertion" below.

Figure 9

Step 18. Request that the woman palpate the implant.

Step 19. Apply a pressure bandage with sterile gauze to minimize bruising. The woman may remove the pressure bandage in 24 hours and the small adhesive bandage over the insertion site after 3 to 5 days.

Step 20. Complete the PATIENT CHART LABEL and affix it to the woman's medical record.

Step 21. The applicator is for single use only and should be disposed in accordance with the Center for Disease Control and Prevention guidelines for handling of hazardous waste.

If the rod is not palpable after insertion:

If you cannot feel the implant or are in doubt of its presence, the implant may not have been inserted or it may have been inserted deeply:

- Check the applicator. The needle should be fully retracted and only the purple tip of the obturator should be visible.
- Use other methods to confirm the presence of the implant. Given the radiopaque nature of the implant, suitable methods for localization are two-dimensional X-ray and X-ray computerized tomography (CT scan). Ultrasound scanning (USS) with a high-frequency linear array transducer (10 MHz or greater) or magnetic resonance imaging (MRI) may be used. If these methods fail, call the Organon Service Center at 1-844-674-3200 for information on the procedure for measuring etonogestrel blood levels which can be used for verification of the presence of the implant.

Until the presence of the implant has been verified, the woman should be advised to use a non-hormonal contraceptive method, such as condoms.

Deeply-placed implants should be localized and removed as soon as possible to avoid the potential for distant migration [see *Warnings and Precautions (5.1)*].

2.3 Removal of NEXPLANON

Preparation



Removal of the implant should only be performed under aseptic conditions by a healthcare professional who is familiar with the removal technique. **If you are unfamiliar with the removal technique, call 1-844-674-3200 for further information.**

Before initiating the removal procedure, the healthcare professional should assess the location of the implant and carefully read the instructions for removal. The exact location of the implant in the arm should be verified by palpation. If the implant is not palpable, consult the medical record to verify the arm which contains the implant. If the implant cannot be palpated, it may be deeply located or have migrated. Consider that it may lie close to vessels and nerves. Removal of non-palpable implants should only be performed by a healthcare professional experienced in removing deeply placed implants and familiar with localizing the implant and the anatomy of the arm. Call 1-844-674-3200 for further information. *[See Localization and Removal of a Non-Palpable Implant, below.]*

Procedure for Removal of an Implant that is Palpable

Before removal of the implant, the healthcare professional should confirm that:

- The woman does not have allergies to the antiseptic or anesthetic to be used.

The following equipment is needed for removal of the implant:

- An examination table for the woman to lie on
- Sterile surgical drapes, sterile gloves, antiseptic solution, surgical marker
- Local anesthetic, needles, and syringe
- Sterile scalpel, forceps (straight and curved mosquito)
- Skin closure, sterile gauze, and pressure bandage

Removal Procedure

For illustrative purposes, Figures depict the left inner arm

Step 1. Have the woman lie on her back on the table. The arm should be positioned with the elbow flexed and the hand underneath the head (or as close as possible). (See Figure 1.)



Step 2. Locate the implant by palpation. Push down the end of the implant closest to the shoulder (Figure 10) to stabilize it; a bulge should appear indicating the tip of the implant that is closest to the elbow. **If the tip does not pop up, removal of the implant may be more challenging** and should be performed by professionals experienced with removing deeper implants. Call 1-844-674-3200 for further information.

Mark the distal end (end closest to the elbow), for example, with a surgical marker.

Figure 10

P - Proximal (toward the shoulder)

D - Distal (toward the elbow)

Step 3. Clean the site with an antiseptic solution.

Step 4. Anesthetize the site, for example, with 0.5 to 1 mL 1% lidocaine, where the incision will be made (Figure 11). Be sure to inject the local anesthetic **under** the implant to keep the implant close to the skin surface. Injection of local anesthetic over the implant may make removal more difficult.

Figure 11

Step 5. Push down the end of the implant closest to the shoulder (Figure 12) to stabilize it throughout the procedure. Starting over the tip of the implant closest to the elbow, make a longitudinal (parallel to the implant) incision of 2 mm towards the elbow. Take care not to cut the tip of the implant.

Figure 12

Step 6. The tip of the implant should pop out of the incision. If it does not, gently push the implant towards the incision until the tip is visible. Grasp the implant with forceps and, if possible, remove the implant (Figure 13). If needed, gently remove adherent tissue from the tip of the implant using blunt dissection. If the implant tip is not exposed following blunt dissection, make an incision into the tissue sheath and then remove the implant with the forceps (Figures 14 and 15).

Figure 13

Figure 14

Figure 15

Step 7. If the tip of the implant does not become visible in the incision, insert forceps (preferably curved mosquito forceps, with the tips pointed up) superficially into the incision (Figure 16). Gently grasp the implant and then flip the forceps over into your other hand (Figure 17).

Figure 16

Figure 17



Step 8. With a second pair of forceps carefully dissect the tissue around the implant and grasp the implant (Figure 18). The implant can then be removed. **If the implant cannot be grasped, stop the procedure and refer the woman to a healthcare professional experienced with complex removals or call 1-844-674-3200.**

Figure 18

Step 9. Confirm that the entire implant, which is 4 cm long, has been removed by measuring its length. There have been reports of broken implants while in the patient's arm. In some cases, difficult removal of the broken implant has been reported. If a partial implant (less than 4 cm) is removed, the remaining piece should be removed by following the instructions in section 2.3. If the woman would like to continue using NEXPLANON, a new implant may be inserted immediately after the old implant is removed using the same incision as long as the site is in the correct location [see *Dosage and Administration (2.4)*].

Step 10. After removing the implant, close the incision with a sterile adhesive wound closure.

Step 11. Apply a pressure bandage with sterile gauze to minimize bruising. The woman may remove the pressure bandage in 24 hours and the sterile adhesive wound closure in 3 to 5 days.

Localization and Removal of a Non-Palpable Implant

There have been reports of migration of the implant; usually this involves minor movement relative to the original position [*see Warnings and Precautions (5.1)*], but may lead to the implant not being palpable at the location in which it was placed. An implant that has been deeply inserted or has migrated may not be palpable and therefore imaging procedures, as described below, may be required for localization.

A non-palpable implant should always be located prior to attempting removal. Given the radiopaque nature of the implant, suitable methods for localization include two-dimensional X-ray and X-ray computer tomography (CT). Ultrasound scanning (USS) with a high-frequency linear array transducer (10 MHz or greater) or magnetic resonance imaging (MRI) may be used. Once the implant has been localized in the arm, the implant should be removed by a healthcare professional experienced in removing deeply placed implants and familiar with the anatomy of the arm. The use of ultrasound guidance during the removal should be considered.

If the implant cannot be found in the arm after comprehensive localization attempts, consider applying imaging techniques to the chest as events of migration to the pulmonary vasculature have been reported. If the implant is located in the chest, surgical or endovascular procedures may be needed for removal; healthcare professionals familiar with the anatomy of the chest should be consulted.

If at any time these imaging methods fail to locate the implant, etonogestrel blood level determination can be used for verification of the presence of the implant. For details on etonogestrel blood level determination, call 1-844-674-3200 for further instructions.

If the implant migrates within the arm, removal may require a minor surgical procedure with a larger incision or a surgical procedure in an operating room. Removal of deeply-inserted implants should be conducted with caution to help prevent injury to deeper neural or vascular structures in the arm. Non-palpable and deeply-inserted implants should be removed by healthcare professionals familiar with the anatomy of the arm and removal of deeply-inserted implants.

Exploratory surgery without knowledge of the exact location of the implant is strongly discouraged.

2.4 Replacing NEXPLANON

Immediate replacement can be done after removal of the previous implant and is similar to the insertion procedure described in section 2.2 Insertion of NEXPLANON.

The new implant may be inserted in the same arm, and through the same incision from which the previous implant was removed, if the site is in the correct location, i.e., 8-10 cm from the medial epicondyle of the humerus and 3-5 cm posterior to (below) the sulcus [*see Dosage and Administration (2.2)*]. If the same incision is being used to insert a new implant, anesthetize the insertion site [for example, 2 mL lidocaine (1%)] applying it just under the skin along the 'insertion canal.'

Follow the subsequent steps in the insertion instructions [see *Dosage and Administration* (2.2)].

3 DOSAGE FORMS AND STRENGTHS

Single, white/off-white, soft, radiopaque, flexible, ethylene vinyl acetate (EVA) copolymer implant, 4 cm in length and 2 mm in diameter containing 68 mg etonogestrel, 15 mg of barium sulfate, and 0.1 mg of magnesium stearate.

4 CONTRAINDICATIONS

NEXPLANON should not be used in women who have

- Known or suspected pregnancy
- Current or past history of thrombosis or thromboembolic disorders
- Liver tumors, benign or malignant, or active liver disease
- Undiagnosed abnormal uterine bleeding
- Known or suspected breast cancer, personal history of breast cancer, or other progestin-sensitive cancer, now or in the past
- Allergic reaction to any of the components of NEXPLANON [see *Adverse Reactions* (6)]

5 WARNINGS AND PRECAUTIONS

The following information is based on experience with the etonogestrel implants (IMPLANON and/or NEXPLANON), other progestin-only contraceptives, or experience with combination (estrogen plus progestin) oral contraceptives.

5.1 Risk of Complications Due to Improper Insertion and Removal

Complications of Insertion and Removal

NEXPLANON should be inserted subdermally so that it will be palpable after insertion, and this should be confirmed by palpation immediately after insertion. Failure to insert NEXPLANON properly may go unnoticed unless it is palpated immediately after insertion. Undetected failure to insert the implant may lead to an unintended pregnancy. Complications related to insertion and removal procedures may occur, e.g., pain, paresthesia, bleeding, hematoma, scarring, or infection.

If NEXPLANON is inserted deeply (intramuscular or intrafascial), neural or vascular injury may occur. To help reduce the risk of neural or vascular injury, NEXPLANON should be inserted subdermally just under the skin at the inner side of the non-dominant upper arm overlying the triceps muscle, about 8-10 cm (3-4 inches) from the medial epicondyle of the humerus, and 3-5 cm (1.25-2 inches) posterior to (below) the sulcus (groove) between the biceps and triceps muscles. This location is intended to avoid the large nerves and blood vessels lying within and surrounding the sulcus. Deep insertions of NEXPLANON have been associated with paresthesia (due to neural injury), migration of the implant (due to intramuscular or fascial insertion), and intravascular insertion. If infection develops at the insertion site, start suitable treatment. If the infection persists, the implant should be removed. Incomplete insertions or infections may lead to

expulsion.

Reports of implant migration within the arm may have been related to deep insertion. Postmarketing reports of implants located within the vessels of the arm and the pulmonary artery also may have been related to deep insertions or intravascular insertions. Some cases of implants found within the pulmonary artery were associated with chest pain and/or respiratory disorders (such as dyspnea, cough, or hemoptysis); others were asymptomatic. In cases where the implant has migrated to the pulmonary artery, endovascular or surgical procedures may be needed for removal.

Implant removal may be difficult or impossible if the implant is not inserted correctly, is inserted too deeply, not palpable, encased in fibrous tissue, or has migrated. If at any time the implant cannot be palpated, it should be localized, and removal is recommended. When an implant is removed, it is important to remove it in its entirety [see *Dosage and Administration (2.3)*].

Exploratory surgery without knowledge of the exact location of the implant is strongly discouraged. Removal of deeply inserted implants should be conducted with caution in order to prevent injury to deeper neural or vascular structures in the arm and be performed by healthcare professionals familiar with the anatomy of the arm. If the implant is located in the chest, healthcare professionals familiar with the anatomy of the chest should be consulted. Failure to remove the implant may result in continued effects of etonogestrel, such as compromised fertility, ectopic pregnancy, or persistence or occurrence of a drug-related adverse event.

Broken or Bent Implants

Cases of breakage or bending of implants while inserted within a patient's arm have been reported. Cases of migration of a broken implant fragment within the arm have also occurred. These cases may be related to external forces, e.g., manipulation of the implant or contact sports. The release rate of etonogestrel may be slightly increased in a broken or bent implant, based on *in vitro* data. As noted previously, when an implant is removed, it is important to remove it in its entirety [see *Dosage and Administration (2.3)*].

NEXPLANON is available only through a restricted program under a REMS [see *Warnings and Precautions (5.2)*].

5.2 NEXPLANON REMS

NEXPLANON is only available through a restricted program under a REMS called NEXPLANON REMS because of the risk of complications due to improper insertion and removal [see *Warnings and Precautions (5.1)*].

Notable requirements of the NEXPLANON REMS include the following:

- Healthcare providers must be certified with the program by enrolling and completing training on the proper insertion and removal of NEXPLANON prior to first use.
- Pharmacies must be certified with the program and must only dispense NEXPLANON to certified healthcare providers who dispense NEXPLANON for insertion.
- Wholesalers and distributors must be registered with the program and must only distribute to certified pharmacies and certified healthcare providers.

Further information is available at www.NEXPLANONREMS.com and 1-833-697-7367.

5.3 Changes in Menstrual Bleeding Patterns

After starting NEXPLANON, women are likely to have a change from their normal menstrual bleeding pattern. These may include changes in bleeding frequency (absent, less, more frequent or continuous), intensity (reduced or increased) or duration. In clinical trials of the non-radiopaque etonogestrel implant (IMPLANON), bleeding patterns ranged from amenorrhea (1 in 5 women) to frequent and/or prolonged bleeding (1 in 5 women). The bleeding pattern experienced during the first three months of NEXPLANON use is broadly predictive of the future bleeding pattern for many women. Women should be counseled regarding the bleeding pattern changes they may experience so that they know what to expect. Abnormal bleeding should be evaluated as needed to exclude pathologic conditions or pregnancy.

In clinical studies of the non-radiopaque etonogestrel implant, reports of changes in bleeding pattern were the most common reason for stopping treatment (11.1%). Irregular bleeding (10.8%) was the single most common reason women stopped treatment, while amenorrhea (0.3%) was cited less frequently. In these studies, women had an average of 17.7 days of bleeding or spotting every 90 days (based on 3,315 intervals of 90 days recorded by 780 patients). The percentages of patients having 0, 1-7, 8-21, or >21 days of spotting or bleeding over a 90-day interval while using the non-radiopaque etonogestrel implant are shown in Table 1.

Table 1: Bleeding or Spotting: Incidence and Duration Over a 90-Day Interval While Using the Non-Radiopaque Etonogestrel Implant (IMPLANON)

Total Days of Bleeding or Spotting	Percentage of Patients		
	Treatment Days 91-180 (N = 745)	Treatment Days 271-360 (N = 657)	Treatment Days 631-720 (N = 547)
0 Days	19%	24%	17%
1-7 Days	15%	13%	12%
8-21 Days	30%	30%	37%
>21 Days	35%	33%	35%

Bleeding patterns observed with use of the non-radiopaque etonogestrel implant for up to 2 years, and the proportion of 90-day intervals with these bleeding patterns, are summarized in Table 2.

Table 2: Bleeding Patterns Using the Non-Radiopaque Etonogestrel Implant (IMPLANON) During the First 2 Years of Use*

BLEEDING PATTERNS	DEFINITIONS	%†
Infrequent	Less than three bleeding and/or spotting episodes in 90 days (excluding	33.6

	amenorrhea)	
Amenorrhea	No bleeding and/or spotting in 90 days	22.2
Prolonged	Any bleeding and/or spotting episode lasting more than 14 days in 90 days	17.7
Frequent	More than 5 bleeding and/or spotting episodes in 90 days	6.7

* Based on 3315 recording periods of 90 days duration in 780 women, excluding the first 90 days after implant insertion

† % = Percentage of 90-day intervals with this pattern

In case of undiagnosed, persistent, or recurrent abnormal vaginal bleeding, appropriate measures should be conducted to rule out malignancy.

5.4 Ectopic Pregnancies

As with all progestin-only contraceptive products, be alert to the possibility of an ectopic pregnancy among women using NEXPLANON who become pregnant or complain of lower abdominal pain. Although ectopic pregnancies are uncommon among women using NEXPLANON, a pregnancy that occurs in a woman using NEXPLANON may be more likely to be ectopic than a pregnancy occurring in a woman using no contraception.

5.5 Thrombotic and Other Vascular Events

The use of combination hormonal contraceptives (progestin plus estrogen) increases the risk of vascular events, including arterial events (strokes and myocardial infarctions) or deep venous thrombotic events (venous thromboembolism, deep venous thrombosis, retinal vein thrombosis, and pulmonary embolism). NEXPLANON is a progestin-only contraceptive. It is unknown whether this increased risk is applicable to etonogestrel alone. It is recommended, however, that women with risk factors known to increase the risk of venous and arterial thromboembolism be carefully assessed.

There have been postmarketing reports of serious arterial thrombotic and venous thromboembolic events, including cases of pulmonary emboli (some fatal), deep vein thrombosis, myocardial infarction, and strokes, in women using etonogestrel implants. NEXPLANON should be removed in the event of a thrombosis.

Due to the risk of thromboembolism associated with pregnancy and immediately following delivery, NEXPLANON should not be used prior to 21 days postpartum. Women with a history of thromboembolic disorders should be made aware of the possibility of a recurrence.

Evaluate for retinal vein thrombosis immediately if there is unexplained loss of vision, proptosis, diplopia, papilledema, or retinal vascular lesions.

Consider removal of the NEXPLANON implant in case of long-term immobilization due to surgery or illness.

5.6 Ovarian Cysts

If follicular development occurs, atresia of the follicle is sometimes delayed, and the

follicle may continue to grow beyond the size it would attain in a normal cycle. Generally, these enlarged follicles disappear spontaneously. On rare occasion, surgery may be required.

5.7 Carcinoma of the Breast and Reproductive Organs

Women who currently have or have had breast cancer should not use hormonal contraception because breast cancer may be hormonally sensitive [see *Contraindications (4)*]. Some studies suggest that the use of combination hormonal contraceptives might increase the incidence of breast cancer; however, other studies have not confirmed such findings.

Some studies suggest that the use of combination hormonal contraceptives is associated with an increase in the risk of cervical cancer or intraepithelial neoplasia. However, there is controversy about the extent to which these findings are due to differences in sexual behavior and other factors.

Women with a family history of breast cancer or who develop breast nodules should be carefully monitored.

5.8 Liver Disease

Disturbances of liver function may necessitate the discontinuation of hormonal contraceptive use until markers of liver function return to normal. Remove NEXPLANON if jaundice develops.

Hepatic adenomas are associated with combination hormonal contraceptives use. An estimate of the attributable risk is 3.3 cases per 100,000 for combination hormonal contraceptives users. It is not known whether a similar risk exists with progestin-only methods like NEXPLANON.

The progestin in NEXPLANON may be poorly metabolized in women with liver impairment. Use of NEXPLANON in women with active liver disease or liver cancer is contraindicated [see *Contraindications (4)*].

5.9 Weight Gain

In clinical studies, mean weight gain in U.S. non-radiopaque etonogestrel implant (IMPLANON) users was 2.8 pounds after one year and 3.7 pounds after two years. How much of the weight gain was related to the non-radiopaque etonogestrel implant is unknown. In studies, 2.3% of the users reported weight gain as the reason for having the non-radiopaque etonogestrel implant removed.

5.10 Elevated Blood Pressure

Women with a history of hypertension-related diseases or renal disease should be discouraged from using hormonal contraception. For women with well-controlled hypertension, use of NEXPLANON can be considered. Women with hypertension using NEXPLANON should be closely monitored. If sustained hypertension develops during the use of NEXPLANON, or if a significant increase in blood pressure does not respond adequately to antihypertensive therapy, NEXPLANON should be removed.

5.11 Gallbladder Disease

Studies suggest a small increased relative risk of developing gallbladder disease among combination hormonal contraceptive users. It is not known whether a similar risk exists with progestin-only methods like NEXPLANON.

5.12 Carbohydrate and Lipid Metabolic Effects

Use of NEXPLANON may induce mild insulin resistance and small changes in glucose concentrations of unknown clinical significance. Carefully monitor prediabetic and diabetic women using NEXPLANON.

Women who are being treated for hyperlipidemia should be followed closely if they elect to use NEXPLANON. Some progestins may elevate LDL levels and may render the control of hyperlipidemia more difficult.

5.13 Depressed Mood

Women with a history of depressed mood should be carefully observed. Consideration should be given to removing NEXPLANON in patients who become significantly depressed.

5.14 Return to Ovulation

In clinical trials with the non-radiopaque etonogestrel implant (IMPLANON), the etonogestrel levels in blood decreased below sensitivity of the assay by one week after removal of the implant. In addition, pregnancies were observed to occur as early as 7 to 14 days after removal. Therefore, a woman should re-start contraception immediately after removal of the implant if continued contraceptive protection is desired.

5.15 Fluid Retention

Hormonal contraceptives may cause some degree of fluid retention. They should be prescribed with caution, and only with careful monitoring, in patients with conditions which might be aggravated by fluid retention. It is unknown if NEXPLANON causes fluid retention.

5.16 Contact Lenses

Contact lens wearers who develop visual changes or changes in lens tolerance should be assessed by an ophthalmologist.

5.17 Monitoring

A woman who is using NEXPLANON should have a yearly visit with her healthcare professional for a blood pressure check and for other indicated health care.

5.18 Drug-Laboratory Test Interactions

Sex hormone-binding globulin concentrations may be decreased for the first six months after NEXPLANON insertion followed by gradual recovery. Thyroxine concentrations may initially be slightly decreased followed by gradual recovery to baseline.

6 ADVERSE REACTIONS

The following adverse reactions reported with the use of hormonal contraception are discussed elsewhere in the labeling:

- Changes in Menstrual Bleeding Patterns [see Warnings and Precautions (5.3)]
- Ectopic Pregnancies [see Warnings and Precautions (5.4)]
- Thrombotic and Other Vascular Events [see Warnings and Precautions (5.5)]
- Liver Disease [see Warnings and Precautions (5.8)]

6.1 Clinical Trials Experience

Adverse reaction rates observed in the clinical trials of a drug cannot be directly compared to rates in the clinical trials of another drug and may not reflect the rates observed in practice, because clinical trials are conducted under widely varying conditions.

In clinical trials of three years duration involving 942 women who were evaluated for safety, change in menstrual bleeding patterns (irregular menses) was the most common adverse reaction causing discontinuation of use of the non-radiopaque etonogestrel implant (IMPLANON) (11.1% of women).

Adverse reactions that resulted in a rate of discontinuation of $\geq 1\%$ are shown in Table 3.

Table 3: Adverse Reactions Leading to Discontinuation of Treatment in 1% or More of Subjects in 3-Year Clinical Trials of the Non-Radiopaque Etonogestrel Implant (IMPLANON)

Adverse Reactions	All Studies N = 942
Bleeding Irregularities*	11.1%
Emotional Lability†	2.3%
Weight Increase	2.3%
Headache	1.6%
Acne	1.3%
Depression‡	1.0%

* Includes "frequent", "heavy", "prolonged", "spotting", and other patterns of bleeding irregularity.

† Among US subjects (N=330), 6.1% experienced emotional lability that led to discontinuation.

‡ Among US subjects (N=330), 2.4% experienced depression that led to discontinuation.

Other adverse reactions that were reported by at least 5% of subjects in the non-radiopaque etonogestrel implant clinical trials are listed in Table 4.

Table 4: Common Adverse Reactions Reported by $\geq 5\%$ of Subjects in 3-Year Clinical Trials with the Non-Radiopaque Etonogestrel Implant (IMPLANON)

Adverse Reactions	All Studies N = 942
-------------------	------------------------

Headache	24.9%
Vaginitis	14.5%
Weight increase	13.7%
Acne	13.5%
Breast pain	12.8%
Abdominal pain	10.9%
Pharyngitis	10.5%
Leukorrhea	9.6%
Influenza-like symptoms	7.6%
Dizziness	7.2%
Dysmenorrhea	7.2%
Back pain	6.8%
Emotional lability	6.5%
Nausea	6.4%
Pain	5.6%
Nervousness	5.6%
Depression	5.5%
Hypersensitivity	5.4%
Insertion site pain	5.2%

In a clinical trial of NEXPLANON, in which investigators were asked to examine the implant site after insertion, implant site reactions were reported in 8.6% of women. Erythema was the most frequent implant site complication, reported during or shortly after insertion, occurring in 3.3% of subjects. Additionally, hematoma (3.0%), bruising (2.0%), pain (1.0%), and swelling (0.7%) were reported.

In a separate clinical trial to assess contraceptive efficacy and safety of NEXPLANON beyond 3 years, up to 5 years, where a total of 498 women were evaluated for safety, a similar adverse reaction profile was observed as in Years 1 through 3. The most frequently reported adverse reaction >5% related to NEXPLANON was intermenstrual bleeding (5.4%). Changes in menstrual bleeding patterns were the most frequently reported adverse reaction leading to discontinuation occurring in 4.0% of participants.

6.2 Postmarketing Experience

Adverse Reactions and Events from Postmarketing Study

Nexplanon Observational Risk Assessment Study (NORA)

A postmarketing prospective active surveillance study was conducted among 7,364 patients in the United States to characterize the frequency of insertion-, localization-, and removal-related events.

Implant Insertion

Insertion difficulty or an insertion-related event occurred in 2.6% of the study participants. The overall incidence of incorrect insertion (unrecognized non-insertion, partial insertion, and deep insertion), reported by healthcare professionals was 12.6 per 1,000 insertions (95% CI, 10.2, 15.5). Table 5 summarizes the types and frequencies of these incorrect insertions.

Table 5: Incorrect Insertion Types and Incidence Reported by Healthcare Professionals

Type of Incorrect Insertion Event	Number of Events*	Incidence per 1,000 Insertions (95% CI)
<i>(Initially) Unrecognized Non-insertions</i>	1	0.1 (0.0-0.8)
<i>Partial Insertions</i>	27	3.7 (2.4-5.3)
<i>Deep Insertions</i>	65	8.8 (6.8-11.2)
Injury to nerve or blood vessel	1	0.1 (0.0-0.8)
Implant located within muscle	2	0.3 (0.0-1.0)
Implant located adjacent to fascial tissue	56	7.6 (5.8-9.9)
Implant not palpable	6	0.8 (0.3-1.8)

* Total Insertion Procedures = 7,364

Implant Removal

Implant removal information from both healthcare professionals and patients was collected for 5,159 patients (70% of the study population). Of these patients, data were available from healthcare professionals regarding 4,373 removal procedures. Healthcare professionals reported removal-related difficulties or complications in 1.5% of removal procedures. Table 6 provides a summary.

Table 6: Removal-related Events Reported by Healthcare Professionals

Removal Related Events	Number of Events*	Incidence per 1,000 Removals (95% CI)
Any Event [†]	60	13.7 (10.5-17.6)
Encased in Fibrotic Tissue	29	6.6 (4.4-9.5)
Implant Too Deep	11	2.5 (1.3-4.5)
Implant Migrated [‡]	6	1.4 (0.5-3.0)
Multiple Attempts Required	13	3.0 (1.6-5.1)
Other [§]	14	3.2 (1.8-5.4)

* Total Removal Procedures: N= 4,373

† Limited to one event per removal procedure

‡ Only local migrations within the arm reported

§ Other included fragmented or bent implants, patient-related issues, wound care required, two incisions required, and difficulty identifying end of device.

At the time of implant removal, eighteen implants (0.4% of all localizations or removals)

were not palpable by the healthcare professionals. Of these eighteen, eleven were localized and removed, and one was localized but left *in situ*. Removal was not attempted for six non-palpable implants due to underlying health conditions, administrative problems, or unspecified reasons.

There were no reports of implants having migrated more than a few centimeters from the insertion site and no reports of implants localized at a site other than the arm. No neurovascular injuries were reported by healthcare professionals.

Adverse Reactions Reported by Patients

Table 7 provides a summary of adverse reactions reported by patients at the time of implant insertion and after removal.

Table 7: Adverse Reactions Reported by Patients at Implant Insertion and after Removal

Patient Reported Adverse Reactions	At Insertion		After Removal	
	N*	Incidence per 1000 insertions (95% CI)	N*	Incidence per 1000 insertions (95% CI)
Any Event†	49	6.7 (4.9-8.8)	42‡	5.7 (4.1-7.7)
Pins and Needles/Numbness (arm/hand/fingers)	17	2.3 (1.4-3.7)	24	3.3 (2.1-4.9)
Severe Pain	10	1.4 (0.7-2.5)	11	1.5 (0.8-2.7)
Altered Strength/Movement	3	0.4 (0.1-1.2)	8	1.1 (0.5-2.1)
Injury to Blood Vessels or Blood Clots in Arm§	2	0.3 (0-1.0)	--	--
Other¶	22	3.0 (1.9-4.5)	18	2.4 (1.5-3.9)

* Total Insertion Procedures: N = 7,364

† Limited to one event per woman

‡ Based on 3,447 questionnaires

§ No blood clots were observed during the study

¶ "Other" included localized or insertion site pain, soreness, tenderness, dermatological changes, itching, bruising, and infection, local migrations within the arm, and physical damage to the implant (e.g., fractured or bent implant).

In summary, this prospective active surveillance study showed that the frequency of insertion-, localization-, and removal-related events is consistent with results previously reported from clinical trials.

Adverse Reactions from Postmarketing Spontaneous Reports

The following additional adverse reactions have been identified during post-approval use of IMPLANON and NEXPLANON. It is not possible to reliably estimate their frequency or

establish a causal relationship to drug exposure because these reactions are reported voluntarily from a population of uncertain size.

Gastrointestinal disorders: constipation, diarrhea, flatulence, vomiting.

General disorders and administration site conditions: edema, fatigue, implant site reaction, pyrexia.

Immune system disorders: anaphylactic reactions.

Infections and infestations: rhinitis, urinary tract infection.

Investigations: clinically relevant rise in blood pressure, weight decreased.

Metabolism and nutrition disorders: increased appetite.

Musculoskeletal and connective tissue disorders: arthralgia, musculoskeletal pain, myalgia.

Nervous system disorders: convulsions, migraine, somnolence.

Pregnancy, puerperium and perinatal conditions: ectopic pregnancy.

Psychiatric disorders: anxiety, insomnia, libido decreased.

Renal and urinary disorders: dysuria.

Reproductive system and breast disorders: breast discharge, breast enlargement, ovarian cyst, pruritus genital, vulvovaginal discomfort.

Skin and subcutaneous tissue disorders: angioedema, aggravation of angioedema and/or aggravation of hereditary angioedema, alopecia, chloasma, hypertrichosis, pruritus, rash, seborrhea, urticaria.

Vascular disorders: hot flush.

Reported complications related to insertion or removal of the etonogestrel implants include vasovagal reactions (e.g., hypotension, dizziness, or syncope), bruising, slight local irritation, pain, itching, fibrosis at the implant site, paresthesia or paresthesia-like events, scarring, and abscesses. Implant expulsions and migrations also have been reported. In some cases, implants have migrated to the chest wall or into the vasculature, including the pulmonary artery. Some cases of implants migrating to the pulmonary artery presented with symptoms of chest pain and/or respiratory disorders (e.g., dyspnea, cough, or hemoptysis); other cases have been reported as asymptomatic. In-patient surgical interventions might be necessary when removing implants associated with complications [see *Warnings and Precautions (5.1)*].

7 DRUG INTERACTIONS

Consult the labeling of concurrently-used drugs to obtain further information about interactions with hormonal contraceptives or the potential for enzyme alterations.

7.1 Effects of Other Drugs on Hormonal Contraceptives

Substances decreasing the plasma concentrations of hormonal contraceptives (HCs) and potentially diminishing the efficacy of HCs:

Drugs or herbal products that induce certain enzymes, including cytochrome P450 3A4

(CYP3A4), may decrease the plasma concentrations of HCs and potentially diminish the effectiveness of HCs or increase breakthrough bleeding.

Some drugs or herbal products that may decrease the effectiveness of HCs include efavirenz, phenytoin, barbiturates, carbamazepine, bosentan, felbamate, griseofulvin, oxcarbazepine, rifampicin, topiramate, rifabutin, rufinamide, aprepitant, and products containing St. John's wort. Interactions between HCs and other drugs may lead to breakthrough bleeding and/or contraceptive failure. Counsel women to use an alternative non-hormonal method of contraception or a back-up method when enzyme inducers are used with HCs, and to continue back-up non-hormonal contraception for 28 days after discontinuing the enzyme inducer to ensure contraceptive reliability.

Substances increasing the plasma concentrations of HCs:

Co-administration of certain HCs and strong or moderate CYP3A4 inhibitors such as itraconazole, voriconazole, fluconazole, grapefruit juice, or ketoconazole may increase the serum concentrations of progestins, including etonogestrel.

Human Immunodeficiency Virus (HIV) protease inhibitors and non-nucleoside reverse transcriptase inhibitors:

Significant changes (increase or decrease) in the plasma concentrations of progestin have been noted in cases of co-administration with HIV protease inhibitors (decrease [e.g., nelfinavir] or increase [e.g., indinavir, ritonavir and ritonavir-boosted protease inhibitors]) or with non-nucleoside reverse transcriptase inhibitors (decrease [e.g., nevirapine, efavirenz] or increase [e.g., etravirine]). These changes may be clinically relevant in some cases.

Consult the prescribing information of anti-viral and anti-retroviral concomitant medications to identify potential interactions.

7.2 Effects of Hormonal Contraceptives on Other Drugs

Hormonal contraceptives may affect the metabolism of other drugs. Consequently, plasma concentrations may either increase (for example, cyclosporine) or decrease (for example, lamotrigine). Consult the labeling of all concurrently-used drugs to obtain further information about interactions with hormonal contraceptives or the potential for enzyme alterations.

8 USE IN SPECIFIC POPULATIONS

8.1 Pregnancy

Risk Summary

NEXPLANON is contraindicated during pregnancy because there is no need for pregnancy prevention in a woman who is already pregnant [see *Contraindications (4)*]. Epidemiologic studies and meta-analyses have not shown an increased risk of genital or non-genital birth defects (including cardiac anomalies and limb-reduction defects) following maternal exposure to low dose CHCs prior to conception or during early pregnancy. No adverse development outcomes were observed in pregnant rats and rabbits with the administration of etonogestrel during organogenesis at doses of 315 or 781 times the anticipated human dose (60 µg/day) (see *Data*).

NEXPLANON should be removed if maintaining a pregnancy.

Data

Animal Data

Teratology studies have been performed in rats and rabbits using oral administration up to 315 and 781 times the human etonogestrel dose (based upon body surface) and revealed no evidence of fetal harm due to etonogestrel exposure.

8.2 Lactation

Risk Summary

Small amounts of contraceptive steroids and/or metabolites, including etonogestrel are present in human milk. No significant adverse effects have been observed in the production or quality of breast milk, or on the physical and psychomotor development of breastfed infants (*see Data*).

Hormonal contraceptives, including etonogestrel, can reduce milk production in breastfeeding mothers. This is less likely to occur once breastfeeding is well-established; however, it can occur at any time in some women. When possible, advise the nursing mother about both hormonal and non-hormonal contraceptive options, as steroids may not be the initial choice for these patients. The developmental and health benefits of breastfeeding should be considered along with the mother's clinical need for NEXPLANON and any potential adverse effects on the breastfed child from NEXPLANON or from the underlying maternal condition.

Data

The amount of etonogestrel contained within breast milk was measured in 38 lactating women who began using IMPLANON during the fourth to eighth week postpartum. The study evaluated Implanon versus another contraceptive, was not randomized and data were considered observational and exploratory; therefore, comparisons could not be made. Based on the findings of this study, during the first months after insertion of IMPLANON, when maternal blood levels of etonogestrel are highest, about 100 ng of etonogestrel may be ingested by the child per day based on an average daily milk ingestion of 658 mL. Based on daily milk ingestion of 150 mL/kg, the mean daily infant etonogestrel dose one month after insertion of IMPLANON is about 2.2% of the weight-adjusted maternal daily dose, or about 0.2% of the estimated absolute maternal daily dose. Adverse reactions were not observed in breastfed infants exposed to etonogestrel through breast milk. No adverse effects on the production or quality of breast milk were detected.

8.4 Pediatric Use

The safety and effectiveness of NEXPLANON have been established in women of reproductive potential. Safety and effectiveness of NEXPLANON are expected to be the same in postpubertal adolescents as in adult women.

NEXPLANON is not indicated before menarche.

8.5 Geriatric Use

This product has not been studied in women over 65 years of age and is not indicated in

this population.

8.6 Hepatic Impairment

No studies were conducted to evaluate the effect of hepatic disease on the disposition of NEXPLANON. The use of NEXPLANON in women with active liver disease is contraindicated [see *Contraindications (4)*].

10 OVERDOSAGE

Overdosage may result if more than one implant is inserted. In case of suspected overdose, the implant should be removed.

11 DESCRIPTION

NEXPLANON is a radiopaque, progestin-only, soft, flexible implant preloaded in a sterile, disposable applicator for subdermal use. The implant is white/off-white, non-biodegradable and 4 cm in length with a diameter of 2 mm (see Figure 19). Each implant consists of an ethylene vinyl acetate (EVA) copolymer (28% vinyl acetate, 43 mg) core, containing 68 mg of the synthetic progestin etonogestrel, barium sulfate (15 mg), radiopaque ingredient), and magnesium stearate (0.1 mg), surrounded by an EVA copolymer skin. Once inserted subdermally, the release rate is 60-75 mcg/day in week 5-6 and decreases to approximately 40-50 mcg/day at the end of the first year, and then to approximately 15-20 mcg/day at the end of the fifth year. NEXPLANON is a progestin-only contraceptive and does not contain estrogen. NEXPLANON is not made with natural rubber latex.

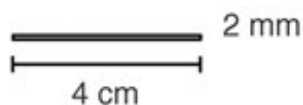


Figure 19 (Not to scale)

Etonogestrel [13-Ethyl-17-hydroxy-11-methylene-18,19-dinor-17 α -pregn-4-en-20-yn-3-one], structurally derived from 19-nortestosterone, is the synthetic biologically active metabolite of the synthetic progestin desogestrel. It has a molecular weight of 324.46 and the following structural formula (Figure 20).

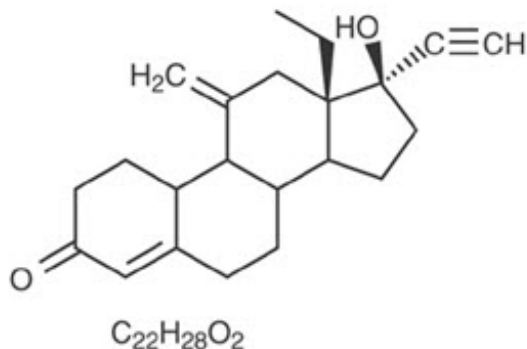


Figure 20

12 CLINICAL PHARMACOLOGY

12.1 Mechanism of Action

The contraceptive effect of NEXPLANON is achieved by suppression of ovulation, increased viscosity of the cervical mucus, and alterations in the endometrium.

12.2 Pharmacodynamics

Exposure-response relationships of NEXPLANON are unknown.

12.3 Pharmacokinetics

Absorption

After subdermal insertion of the etonogestrel implant, etonogestrel is released into the circulation and is approximately 100% bioavailable. Maximum serum concentrations were reached within the first two weeks after insertion and gradually decreased over time. Table 8 shows mean (\pm standard deviation) serum concentrations of etonogestrel after insertion of NEXPLANON.

Table 8: Etonogestrel serum concentrations after NEXPLANON insertion

Time after insertion	Etonogestrel serum concentrations [pg/mL] Mean (\pm standard deviation)	
	Study 34528*	Study MK-8415-060†
2 weeks	1200 (\pm 604)	NA
1 year	202 (\pm 55)	NA
2 years	164 (\pm 58)	NA
3 years	138 (\pm 43)	143 (\pm 74)
4 years	NA	123 (\pm 45)
5 years	NA	111 (\pm 51)

NA = not available

* NEXPLANON use duration: 3 years.

† Subjects had used NEXPLANON for 3 years (\pm 2 weeks) at time of study enrollment.

Distribution

The apparent volume of distribution averages about 201 L. Etonogestrel is approximately 32% bound to sex hormone binding globulin (SHBG) and 66% bound to albumin in blood.

Metabolism

In vitro data shows that etonogestrel is metabolized in liver microsomes by the cytochrome P450 3A4 isoenzyme. The biological activity of etonogestrel metabolites is unknown.

Excretion

The elimination half-life of etonogestrel is approximately 25 hours. Excretion of etonogestrel and its metabolites, either as free steroid or as conjugates, is mainly in urine and to a lesser extent in feces. After removal of the implant, etonogestrel concentrations decreased below sensitivity of the assay by one week.

Specific Population

Women with Obesity

Pharmacokinetics of etonogestrel was evaluated in a clinical trial during the use of NEXPLANON from years 3 to 5. The median (range) body mass index (BMI) of 215 study treatment completers was 27.9 (17.4 to 63.9) kg/m² at baseline. Among the completers, 86 had a BMI ≥ 30 kg/m² and 23 had a BMI ≥ 40 kg/m². Mean etonogestrel serum concentrations were relatively lower in subjects with a BMI ≥ 30 kg/m² compared with those with a BMI < 30 kg/m²; the ratio of mean etonogestrel serum concentrations ranged from 0.76-0.88 during the use of NEXPLANON from years 3 to 5. There is a substantial overlap in etonogestrel serum concentration ranges between the two BMI categories ≥ 30 kg/m² versus < 30 kg/m² (49.7-455 pg/mL versus 33-363 pg/mL, respectively, at 5 years).

13 NONCLINICAL TOXICOLOGY

13.1 Carcinogenesis, Mutagenesis, Impairment of Fertility

In a 24-month carcinogenicity study in male and female rats with subdermal implants releasing 10 and 20 mcg etonogestrel per day (equal to approximately 1.8-3.6 times the systemic steady state exposure in women using NEXPLANON), no drug-related carcinogenic potential was observed. Etonogestrel was not genotoxic in the *in vitro* Ames/Salmonella reverse mutation assay, the chromosomal aberration assay in Chinese hamster ovary cells or the *in vivo* mouse micronucleus test. Fertility in female rats returned after withdrawal from treatment.

14 CLINICAL STUDIES

14.1 Pregnancy

In clinical trials of up to 3 years duration that involved 923 subjects, 18-40 years of age at entry, and 1756 women-years of use with the non-radiopaque etonogestrel implant (IMPLANON), the total exposures expressed as 28-day cycle equivalents by study year were:

Year 1: 10,866 cycles

Year 2: 8,581 cycles

Year 3: 3,442 cycles

The clinical trials excluded women who:

- Weighed more than 130% of their ideal body weight
- Were chronically taking medications that induce liver enzymes

In the subgroup of women, 18-35 years of age at entry, 6 pregnancies during 20,648 cycles of use were reported. Two pregnancies occurred in each of Years 1, 2, and 3. Each conception was likely to have occurred shortly before or within 2 weeks after removal of the non-radiopaque etonogestrel implant. With these 6 pregnancies, the cumulative Pearl Index (PI) was 0.38 pregnancies per 100 women-years of use.

The contraceptive efficacy of NEXPLANON during use from 3 to 5 years was evaluated in a multicenter, single-arm, open-label study (NCT04626596) conducted in the United States. The trial enrolled women 18 to 35 years of age who had been using NEXPLANON for 36 months (± 2 weeks) from the date of insertion at the time of enrollment. A total of 399 women were evaluated, having a mean age of 27 years.

Participants were 74.2% White, 16.8% Black/African American, 3.8% Asian, 1.3% American Indian or Alaska Native, 0.5% Native Hawaiian or Other Pacific Islander, and 3.5% multiple or missing races. The mean BMI was 29.4 kg/m² (range: 17.2-64.3 kg/m²) and the mean weight was 78.7 kg (range: 40.8-180.8 kg). One hundred fifty-two participants (38.1%) had a BMI ≥ 30 kg/m², including 40 participants (10.0%) with BMI ≥ 40 kg/m².

The total exposures expressed as 28-day cycle equivalents by study year were:

Year 4: 4478 cycles

Year 5: 3274 cycles

No pregnancies were reported in years 4 and 5, with a PI of 0.0 (95% CI- 0.00, 0.69) pregnancies per 100 women-years of use.

14.2 Return to Ovulation

In clinical trials with the non-radiopaque etonogestrel implant (IMPLANON), the etonogestrel levels in blood decreased below sensitivity of the assay by one week after removal of the implant. In addition, pregnancies were observed to occur as early as 7 to 14 days after removal. Therefore, a woman should re-start contraception immediately after removal of the implant if continued contraceptive protection is desired.

14.3 Implant Insertion and Removal Characteristics

Out of 301 insertions of the NEXPLANON implant in a clinical trial, the mean insertion time (from the removal of the protection cap of the applicator until retraction of the needle from the arm) was 27.9 ± 29.3 seconds. After insertion, 300 out of 301 (99.7%) NEXPLANON implants were palpable that were placed by trained providers. The single, non-palpable implant was not inserted according to the instructions.

16 HOW SUPPLIED/STORAGE AND HANDLING

16.1 How Supplied

NEXPLANON is supplied as follows:

NDC 78206-145-01

One NEXPLANON package consists of a single implant containing 68 mg etonogestrel, 15 mg of barium sulfate and 0.1 mg of magnesium stearate that is 4 cm in length and 2

mm in diameter, which is pre-loaded in the needle of a disposable applicator. The sterile applicator containing the implant is packed in a blister pack.

16.2 Storage and Handling

Store NEXPLANON at 20°C to 25°C (68°F to 77°F); excursions permitted between 15°C to 30°C (59°F to 86°F) [see USP Controlled Room Temperature]. Avoid storing NEXPLANON at temperatures above 30°C (86°F).

17 PATIENT COUNSELING INFORMATION

Advise the patient to read the FDA-approved patient labeling (Patient Information).

- Advise women about the insertion and removal procedure of the NEXPLANON implant. Provide the woman with a copy of the Patient Labeling and ensure that she understands the information in the Patient Labeling before insertion and removal.
- Advise women to contact their healthcare professional immediately if, at any time, they are unable to palpate the implant.
- Advise women that NEXPLANON does not protect against HIV infection (AIDS) or other sexually transmitted diseases.
- Advise women that the use of NEXPLANON may be associated with changes in their normal menstrual bleeding patterns so that they know what to expect.
- MRI Safety Information: NEXPLANON is MR safe.

Manufactured for: Organon USA LLC, a subsidiary of
ORGANON & Co.,
Jersey City, NJ 07302, USA

Manufactured by: N.V. Organon, Oss, The Netherlands, a subsidiary of Organon & Co.,
Jersey City, NJ 07302, USA

For patent information: www.organon.com/our-solutions/patent/

© 2026 Organon group of companies. All rights reserved.

uspi-og8415-iptx-2605r004

FDA-Approved Patient Labeling

NEXPLANON® (etonogestrel implant)

Radiopaque

Subdermal Use Only

NEXPLANON® does not protect against HIV infection (the virus that causes AIDS) or other sexually transmitted diseases.

Read this Patient Information leaflet carefully before you decide if NEXPLANON is right for you. This information does not take the place of talking with your healthcare professional. If you have any questions about NEXPLANON, ask your healthcare professional.

What is NEXPLANON?

NEXPLANON is a hormone-releasing birth control implant for prevention of pregnancy for up to 5 years. The implant is a flexible plastic rod about the size of a matchstick that contains a progestin hormone called etonogestrel. It contains a small amount of barium

sulfate (15 mg), so that the implant can be seen by X-ray, an ethylene vinyl acetate (EVA) copolymer (28% vinyl acetate, 43 mg) core, and magnesium stearate (0.1 mg). Your healthcare professional will insert the implant just under the skin of the inner side of your upper arm. You can use a single NEXPLANON implant for up to 5 years. NEXPLANON does not contain estrogen.



What if I need birth control for more than 5 years?

The NEXPLANON implant must be removed by the end of 5 years. Your healthcare professional can insert a new implant under your skin after taking out the old one if you choose to continue using NEXPLANON for birth control.

What if I change my mind about birth control and want to stop using NEXPLANON before 5 years?

Your healthcare professional can remove the implant at any time. You may become pregnant as early as the first week after removal of the implant. If you do not want to get pregnant after your healthcare professional removes the NEXPLANON implant, you should start another birth control method right away.

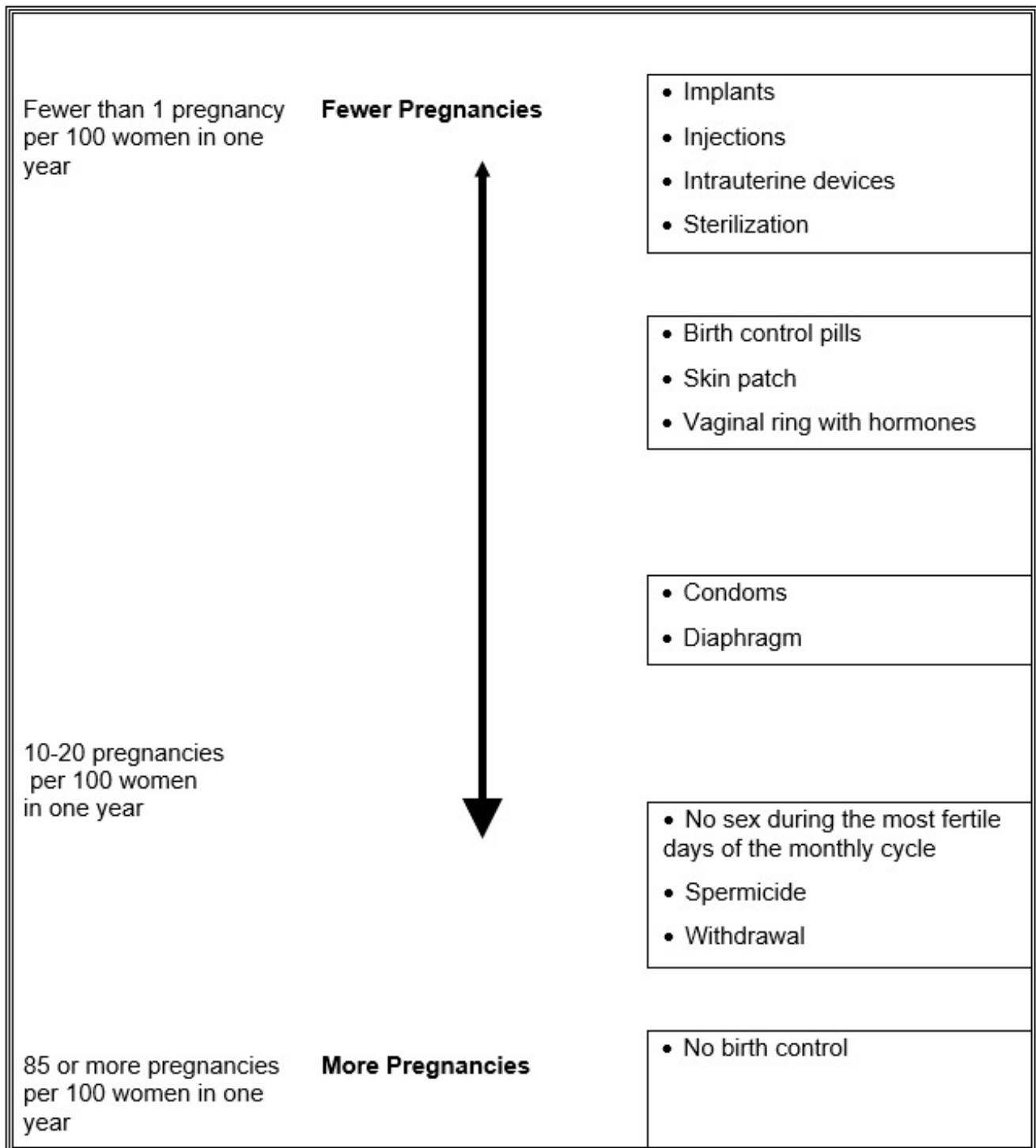
How does NEXPLANON work?

NEXPLANON prevents pregnancy in several ways. The most important way is by stopping the release of an egg from your ovary. NEXPLANON also thickens the mucus in your cervix and this change may keep sperm from reaching the egg. NEXPLANON also changes the lining of your uterus.

How well does NEXPLANON work?

When the NEXPLANON implant is placed correctly, your chance of getting pregnant is very low (less than 1 pregnancy per 100 women who use NEXPLANON for 1 year).

The following chart shows the chance of getting pregnant for women who use different methods of birth control. Each box on the chart contains a list of birth control methods that are similar in effectiveness. The most effective methods are at the top of the chart. The box on the bottom of the chart shows the chance of getting pregnant for women who do not use birth control and are trying to get pregnant.



Who should not use NEXPLANON?

Do not use NEXPLANON if you have any of the following conditions:

- Are pregnant or think you may be pregnant
- Have, or have had, blood clots, such as blood clots in your legs (deep vein thrombosis), lungs (pulmonary embolism), eyes (total or partial blindness), heart (heart attack), or brain (stroke)
- Liver disease or a liver tumor
- Unexplained vaginal bleeding
- Breast cancer or any other cancer that is sensitive to progestin (a female hormone), now or in the past

- An allergy to anything in NEXPLANON

Tell your healthcare professional if you have or have had any of the conditions listed above. Your healthcare professional can suggest a different method of birth control.

In addition, talk to your healthcare professional about using NEXPLANON if you have any of the following conditions:

- Diabetes
- High cholesterol or triglycerides
- Headaches
- Gallbladder or kidney problems
- A history of depressed mood
- High blood pressure
- An allergy to numbing medicines (anesthetics) or medicines used to clean your skin (antiseptics). These medicines will be used when the implant is placed into or removed from your arm.

Interaction with Other Medicines

Tell your healthcare professional about all the medicines you take, including prescription and over-the-counter medicines, vitamins, and herbal supplements. Using certain medicines with NEXPLANON, including those listed below, may make NEXPLANON less effective:

- aprepitant
- barbiturates
- bosentan
- carbamazepine
- felbamate
- griseofulvin
- oxcarbazepine
- phenytoin
- rifampin
- St. John's wort
- topiramate
- HIV medicines

Ask your healthcare professional if you are not sure if your medicine is one listed above.

If you are taking medicines or herbal products that might make NEXPLANON less effective, you and your healthcare professional may decide to leave NEXPLANON in place; in that case, an additional non-hormonal contraceptive should be used. It is necessary to use the additional non-hormonal contraceptive for 28 days after stopping the medicine or herbal product because its effect on NEXPLANON may last that long.

When you are using NEXPLANON, tell all your healthcare professionals that you have NEXPLANON in place in your arm.

Magnetic Resonance Imaging (MRI) Safety Information

NEXPLANON is MRI safe.

How is the NEXPLANON implant placed and removed?

Your healthcare professional will place and remove the NEXPLANON implant using a minor surgical procedure in his or her office. The implant is placed just under the skin on the inner side of your non-dominant upper arm.

The timing of insertion is important. Your healthcare professional may take the following steps to guide timing of insertion:

- Perform a pregnancy test before inserting NEXPLANON
- Schedule the insertion at a specific time of your menstrual cycle (for example, within the first 5 days of your regular menstrual bleeding). If the implant is placed after the fifth day of menses, then you should use an additional contraceptive method (such as a condom) for the first 7 days after insertion.

Your healthcare professional will cover the site where NEXPLANON was placed with 2 bandages. A small bandage will be placed over the insertion site. A larger pressure bandage will be placed over the smaller bandage. Leave the larger pressure bandage on for 24 hours. Keep the smaller bandage clean, dry, and in place for 3 to 5 days.

Immediately after the NEXPLANON implant has been placed, you and your healthcare professional should check that the implant is in your arm by feeling for it.

If you cannot feel the implant immediately after insertion, the implant may not have been inserted, or it may have been inserted deeply. A deep insertion may cause problems with locating and removing the implant. When the healthcare professional has located the implant, it should be removed.

If at any time you cannot feel the NEXPLANON implant, contact your healthcare professional immediately and use a non-hormonal birth control method (such as condoms) until your healthcare professional confirms that the implant is in place. You may need special tests to check that the implant is in place or to help find the implant when it is time to take it out. If the implant cannot be found in the arm after a thorough search, your healthcare professional may use X-rays or other imaging methods on your chest.

Depending on the exact position of the implant, removal may be difficult and may require surgery.

Keep track of the date the implant is to be removed. Schedule an appointment with your healthcare professional to remove the implant on or before the removal date.

Be sure to have checkups as advised by your healthcare professional.

What are the most common side effects I can expect while using NEXPLANON?

• Changes in Menstrual Bleeding Patterns (Menstrual Periods)

The most common side effect of NEXPLANON is a change in your normal menstrual bleeding pattern. In studies, one out of ten women stopped using the implant because of an unfavorable change in their bleeding pattern. You may experience longer or shorter bleeding during your periods or have no bleeding at all. The time between periods may vary, and you may also have spotting in between periods.

Tell your healthcare professional right away if you have the following concerns:

- You think you may be pregnant

- Your menstrual bleeding is heavy and prolonged

The following additional frequent side effects also caused women to stop using the implant:

- Mood swings
- Depressed mood
- Weight gain
- Headache
- Acne

Other common side effects include the following conditions:

- Headache
- Vaginitis (inflammation of the vagina)
- Weight gain
- Acne
- Breast pain
- Viral infections such as sore throats or flu-like symptoms
- Stomach pain
- Painful periods
- Mood swings, nervousness, or depressed mood
- Back pain
- Nausea
- Dizziness
- Pain
- Pain at the site of insertion

Implants have been reported to be found in a blood vessel, including a blood vessel in the lung which can be associated with shortness of breath, cough and/or the coughing up of blood or blood-stained mucus.

These are not all the possible side effects of NEXPLANON. Call your doctor for medical advice about side effects. You may report side effects to the FDA at 1-800-FDA-1088.

What are the possible risks of using NEXPLANON?

• Problems with Insertion and Removal

The implant may not be actually in your arm due to a failed insertion. If this happens, you may become pregnant. Immediately after insertion, and with help from your healthcare professional, you should be able to feel the implant under your skin. If you can't feel the implant, tell your healthcare professional.

Location and removal of the implant may be difficult or impossible because the implant is not where it should be. Special procedures, including surgery in the hospital, may be needed to remove the implant. If the implant is not removed, then the effects of NEXPLANON will continue for a longer time.

Implants have been found in the pulmonary artery (a blood vessel in the lung). If the implant cannot be found in the arm, your healthcare professional may use X-rays or other imaging methods on the chest. If the implant is located in the chest, surgery may be needed.

The following problems related to insertion and removal may also occur:

- Vasovagal reactions (such as a drop in blood pressure, dizziness, or fainting)
- Pain, irritation, swelling, or bruising at the insertion site
- Numbness and tingling at the insertion site
- Scarring, including a thick scar called a keloid around the insertion site
- Infection
- Scar tissue may form around the implant making it difficult to remove
- The implant may come out by itself. You may become pregnant if the implant comes out by itself. Use a back-up birth control method and call your healthcare professional right away if the implant comes out.
- The need for surgery in the hospital to remove the implant
- Injury to nerves or blood vessels in your arm
- The implant breaks, making removal difficult

• **Ectopic Pregnancy**

If you become pregnant while using NEXPLANON, you have a slightly higher chance that the pregnancy will be ectopic (occurring outside the womb) than do women who do not use birth control. Unusual vaginal bleeding or lower stomach (abdominal) pain may be a sign of ectopic pregnancy. Ectopic pregnancy is a medical emergency that often requires surgery. Ectopic pregnancies can cause serious internal bleeding, infertility, and even death. Call your healthcare professional right away if you think you are pregnant or have unexplained lower stomach (abdominal) pain.

• **Ovarian Cysts**

Cysts may develop on the ovaries and usually go away without treatment, but sometimes surgery is needed to remove them.

• **Breast Cancer**

It is not known whether NEXPLANON use changes a woman's risk for breast cancer. If you have breast cancer now, or have had it in the past, do not use NEXPLANON because some breast cancers are sensitive to hormones.

• **Serious Blood Clots**

NEXPLANON may increase your chance of serious blood clots, especially if you have other risk factors such as smoking. It is possible to die from a problem caused by a blood clot, such as a heart attack or a stroke.

Serious blood clots can occur within blood vessels of different parts of the body, including the following examples:

- Legs (deep vein thrombosis)
- Lungs (pulmonary embolism)
- Brain (stroke)
- Heart (heart attack)
- Eyes (total or partial blindness)

The risk of serious blood clots is increased in women who smoke. If you smoke and want to use NEXPLANON, you should quit. Your healthcare professional may be able to help.

Tell your healthcare professional at least 4 weeks before if you are going to have surgery or will need to be on bed rest. You have an increased chance of getting blood

clots during surgery or bed rest.

• **Other Risks**

A few women who use birth control that contains hormones may get the following conditions:

- High blood pressure
- Gallbladder problems
- Rare cancerous or noncancerous liver tumors

• **Broken or Bent Implant**

Breakage or bending of the implant while it is in your arm may occur due to external forces (such as manipulation of the implant or contact sports). A broken implant may move from the insertion site. If you feel that the implant may have broken or bent while in your arm, contact your healthcare professional.

When should I call my healthcare professional?

Call your healthcare professional right away if you have any of the following conditions:

- Pain in your lower leg that does not go away
- Severe chest pain or heaviness in the chest
- Sudden shortness of breath, sharp chest pain, or coughing blood
- Symptoms of a severe allergic reaction, such as swollen face, tongue or throat; trouble breathing or swallowing
- Sudden severe headache unlike your usual headaches
- Weakness or numbness in your arm, leg, or trouble speaking
- Sudden partial or complete blindness
- Yellowing of your skin or whites of your eyes, especially with fever, tiredness, loss of appetite, dark colored urine, or light-colored bowel movements
- Severe pain, swelling, or tenderness in the lower stomach (abdomen)
- Lump in your breast
- Problems sleeping, lack of energy, tiredness, or you feel very sad
- Heavy menstrual bleeding

What if I become pregnant while using NEXPLANON?

You should see your healthcare professional right away if you think that you may be pregnant. It is important to remove the implant and make sure that the pregnancy is not ectopic (occurring outside the womb). Based on experience with other hormonal contraceptives, NEXPLANON is not likely to cause birth defects.

Can I use NEXPLANON when I am breastfeeding?

If you are breastfeeding your child, you may use NEXPLANON if 4 weeks have passed since you had your baby. A small amount of the hormone contained in NEXPLANON passes into your breast milk. The health of breast-fed children whose mothers were using the implant has been studied up to 3 years of age in a small number of children. No effects on the growth and development of the children were seen. If you are breastfeeding and want to use NEXPLANON, talk with your healthcare professional for more information.

General information about the safe and effective use of NEXPLANON

Medicines are sometimes prescribed for purposes other than those listed in a Patient Information leaflet. If you would like more information, talk with your healthcare professional. You can ask your healthcare professional for information about NEXPLANON that is written for healthcare professionals.

Manufactured for: Organon USA LLC, a subsidiary of
ORGANON & Co.,
Jersey City, NJ 07302, USA

Manufactured by: N.V. Organon, Oss, The Netherlands, a subsidiary of Organon & Co.,
Jersey City, NJ 07302, USA

For patent information: www.organon.com/our-solutions/patent/

© 2026 Organon group of companies. All rights reserved.

usppi-og8415-iptx-2605r004

For more information, go to www.nexplanon.com or call 1-844-674-3200.

This Patient Information has been approved by the U.S. Food and Drug Administration.

Revised: 05/2026

PRINCIPAL DISPLAY PANEL - 68 mg Implant Blister Pack Carton

NDC 78206-145-01

1 applicator containing 1 subdermal implant

NEXPLANON®

(etonogestrel implant) 68 mg

Radiopaque

Subdermal Use Only

This product is intended to prevent pregnancy. It does not protect against HIV infection (AIDS) and other sexually transmitted diseases.

Rx only

Encoding area: Space reserved for 2D Serialization Barcode, Serial Number, Expiry and Lot



NEXPLANON

etonogestrel implant

Product Information

Product Type	HUMAN PRESCRIPTION DRUG	Item Code (Source)	NDC:78206-145
Route of Administration	SUBCUTANEOUS		

Active Ingredient/Active Moiety

Ingredient Name	Basis of Strength	Strength
ETONOGESTREL (UNII: 304GTH6RNH) (ETONOGESTREL - UNII:304GTH6RNH)	ETONOGESTREL	68 mg

Inactive Ingredients

Ingredient Name	Strength
BARIUM SULFATE (UNII: 25BB7EKE2E)	15 mg
MAGNESIUM STEARATE (UNII: 70097M6I30)	0.1 mg
ETHYLENE-VINYL ACETATE COPOLYMER (28% VINYL ACETATE) (UNII: 8ILA5X28VS)	43 mg

Product Characteristics

Color	WHITE (white/off-white)	Score	
Shape		Size	
Flavor		Imprint Code	
Contains			

Packaging

#	Item Code	Package Description	Marketing Start Date	Marketing End Date
1	NDC:78206-145-01	1 in 1 CARTON	06/01/2021	
1		1 in 1 BLISTER PACK; Type 4: Device Coated/Impregnated/Otherwise Combined with Drug		

Marketing Information

Marketing Category	Application Number or Monograph Citation	Marketing Start Date	Marketing End Date
NDA	NDA021529	06/01/2021	

Labeler - Organon LLC (117494753)

Revised: 5/2026

Organon LLC