

AMLODIPINE BESYLATE- amlodipine besylate tablet Apotheca Inc.

HIGHLIGHTS OF PRESCRIBING INFORMATION

These highlights do not include all the information needed to use AMLODIPINE BESYLATE TABLETS safely and effectively. See full prescribing information for AMLODIPINE BESYLATE TABLETS.

AMLODIPINE BESYLATE Tablets for oral administration

Initial U.S. Approval: 1987

----- INDICATIONS AND USAGE -----

Amlodipine besylate tablets are calcium channel blockers and may be used alone or in combination with other antihypertensive and antianginal agents for the treatment of:

Hypertension (1.1)

o Amlodipine besylate tablets are indicated for the treatment of hypertension, to lower blood pressure. Lowering blood pressure reduces the risk of fatal and nonfatal cardiovascular events, primarily strokes and myocardial infarctions.

Coronary Artery Disease (1.2)

- o Chronic Stable Angina
- o Vasospastic Angina (Prinzmetal's or Variant Angina)
- o Angiographically Documented Coronary Artery Disease in patients without heart failure or an ejection fraction < 40%

----- DOSAGE AND ADMINISTRATION -----

Adult recommended starting dose: 5 mg once daily with maximum dose 10 mg once daily. (2.1)

- o Small, fragile, or elderly patients, or patients with hepatic insufficiency may be started on 2.5 mg once daily. (2.1)

Pediatric starting dose: 2.5 mg to 5 mg once daily. (2.2)

Important Limitation: Doses in excess of 5 mg daily have not been studied in pediatric patients. (2.2)

----- DOSAGE FORMS AND STRENGTHS -----

- Tablets: 2.5 mg, 5 mg, and 10 mg (3)

----- CONTRAINDICATIONS -----

- Known sensitivity to amlodipine (4)

----- WARNINGS AND PRECAUTIONS -----

- Symptomatic hypotension is possible, particularly in patients with severe aortic stenosis. However, acute hypotension is unlikely. (5.1)
- Worsening angina and acute myocardial infarction can develop after starting or increasing the dose of amlodipine, particularly in patients with severe obstructive coronary artery disease. (5.2)
- Titrate slowly in patients with severe hepatic impairment (5.3)

----- ADVERSE REACTIONS -----

Most common adverse reaction to amlodipine is edema which occurred in a dose related manner. Other adverse experiences not dose related but reported with an incidence >1.0% are fatigue, nausea, abdominal pain, and somnolence. (6)

To report SUSPECTED ADVERSE REACTIONS, contact Unichem Pharmaceuticals (USA), Inc., at 1 866-562-4616 or FDA at 1-800-FDA-1088 or www.fda.gov/medwatch.

----- DRUG INTERACTIONS -----

- Do not exceed doses greater than 20 mg daily of simvastatin. (7.2)

----- USE IN SPECIFIC POPULATIONS -----

- Pregnancy: Use only if the potential benefit justifies the risk. (8.1)
- Nursing: Discontinue when administering amlodipine. (8.3)
- Pediatric: Effect on patients less than 6 years old is not known. (8.4)
- Geriatric: Start dosing at the low end of the dose range. (8.5)

FULL PRESCRIBING INFORMATION: CONTENTS*

1 INDICATIONS AND USAGE

- 1.1 Hypertension
- 1.2 Coronary Artery Disease (CAD)

2 DOSAGE AND ADMINISTRATION

- 2.1 Adults
- 2.2 Children

3 DOSAGE FORMS AND STRENGTHS

4 CONTRAINDICATIONS

5 WARNINGS AND PRECAUTIONS

- 5.1 Hypotension
- 5.2 Increased Angina or Myocardial Infarction
- 5.3 Patients with Hepatic Failure

6 ADVERSE REACTIONS

- 6.1 Clinical Trials Experience
- 6.2 Postmarketing Experience

7 DRUG INTERACTIONS

- 7.1 Impact of Other Drugs on Amlodipine
- 7.2 Impact of Amlodipine on Other Drugs

8 USE IN SPECIFIC POPULATIONS

- 8.1 Pregnancy
- 8.3 Nursing Mothers
- 8.4 Pediatric Use
- 8.5 Geriatric Use

10 OVERDOSAGE

11 DESCRIPTION

12 CLINICAL PHARMACOLOGY

- 12.1 Mechanism of Action
- 12.2 Pharmacodynamics
- 12.3 Pharmacokinetics
- 12.4 Pediatric Patients

13 NONCLINICAL TOXICOLOGY

- 13.1 Carcinogenesis, Mutagenesis, Impairment of Fertility

14 CLINICAL STUDIES

- 14.1 Effects in Hypertension
- 14.2 Effects in Chronic Stable Angina
- 14.3 Effects in Vasospastic Angina
- 14.4 Effects in Documented Coronary Artery Disease
- 14.5 Studies in Patients with Heart Failure

16 HOW SUPPLIED/STORAGE AND HANDLING

- 16.1 How Supplied
- 16.2 Storage

* Sections or subsections omitted from the full prescribing information are not listed.

1 INDICATIONS AND USAGE

1.1 Hypertension

Amlodipine besylate tablets are indicated for the treatment of hypertension, to lower blood pressure. Lowering blood pressure reduces the risk of fatal and nonfatal cardiovascular events, primarily strokes and myocardial infarctions. These benefits have been seen in controlled trials of antihypertensive drugs from a wide variety of pharmacologic classes including amlodipine besylate tablets.

Control of high blood pressure should be part of comprehensive cardiovascular risk management, including, as appropriate, lipid control, diabetes management, antithrombotic therapy, smoking cessation, exercise, and limited sodium intake. Many patients will require more than one drug to achieve blood pressure goals. For specific advice on goals and management, see published guidelines, such as those of the National High Blood Pressure Education Program's Joint National Committee on Prevention, Detection, Evaluation, and Treatment of High Blood Pressure (JNC).

Numerous antihypertensive drugs, from a variety of pharmacologic classes and with different mechanisms of action, have been shown in randomized controlled trials to reduce cardiovascular morbidity and mortality, and it can be concluded that it is blood pressure reduction, and not some other pharmacologic property of the drugs, that is largely responsible for those benefits. The largest and most consistent cardiovascular outcome benefit has been a reduction in the risk of stroke, but reductions in myocardial infarction and cardiovascular mortality also have been seen regularly.

Elevated systolic or diastolic pressure causes increased cardiovascular risk, and the absolute risk increase per mm Hg is greater at higher blood pressures, so that even modest reductions of severe hypertension can provide substantial benefit. Relative risk reduction from blood pressure reduction is similar across populations with varying absolute risk, so the absolute benefit is greater in patients who are at higher risk independent of their hypertension (for example, patients with diabetes or hyperlipidemia), and such patients would be expected to benefit from more aggressive treatment to a lower blood pressure goal.

Some antihypertensive drugs have smaller blood pressure effects (as monotherapy) in black patients, and many antihypertensive drugs have additional approved indications and effects (e.g., on angina, heart failure, or diabetic kidney disease). These considerations may guide selection of therapy.

Amlodipine besylate tablets may be used alone or in combination with other antihypertensive agents.

1.2 Coronary Artery Disease (CAD)

Chronic Stable Angina

Amlodipine besylate tablets are indicated for the symptomatic treatment of chronic stable angina. Amlodipine besylate tablets may be used alone or in combination with other antianginal agents.

Vasospastic Angina (Prinzmetal's or Variant Angina)

Amlodipine besylate tablets are indicated for the treatment of confirmed or suspected vasospastic angina. Amlodipine besylate tablets may be used as monotherapy or in combination with other antianginal agents.

Angiographically Documented CAD

In patients with recently documented CAD by angiography and without heart failure or an ejection fraction <40%, amlodipine besylate tablets are indicated to reduce the risk of hospitalization for angina and to reduce the risk of a coronary revascularization procedure.

2 DOSAGE AND ADMINISTRATION

2.1 Adults

The usual initial antihypertensive oral dose of amlodipine besylate tablets are 5 mg once daily, and the maximum dose is 10 mg once daily.

Small, fragile, or elderly patients, or patients with hepatic insufficiency may be started on 2.5 mg once daily and this dose may be used when adding amlodipine besylate tablets to other antihypertensive therapy.

Adjust dosage according to blood pressure goals. In general, wait 7 to 14 days between titration steps. Titrate more rapidly, however, if clinically warranted, provided the patient is assessed frequently.

Angina: The recommended dose for chronic stable or vasospastic angina is 5–10 mg, with the lower dose suggested in the elderly and in patients with hepatic insufficiency. Most patients will require 10 mg for adequate effect.

Coronary artery disease: The recommended dose range for patients with coronary artery disease is 5–10 mg once daily. In clinical studies, the majority of patients required 10 mg [see *Clinical Studies (14.4)*].

2.2 Children

The effective antihypertensive oral dose in pediatric patients ages 6–17 years is 2.5 mg to 5 mg once daily. Doses in excess of 5 mg daily have not been studied in pediatric patients [see *Clinical Pharmacology (12.4)*, *Clinical Studies (14.1)*].

3 DOSAGE FORMS AND STRENGTHS

Tablets: 2.5 mg White to off-white round flat faced bevelled edged tablets debossed with 'U' on one side and '241' on the other side.

Tablets: 5 mg White to off-white round flat faced bevelled edged tablets debossed with 'U' on one side and '242' on the other side.

Tablets: 10 mg White to off-white round flat faced bevelled edged tablets debossed with 'U' on one side and '243' on the other side

4 CONTRAINDICATIONS

Amlodipine besylate tablets are contraindicated in patients with known sensitivity to amlodipine.

5 WARNINGS AND PRECAUTIONS

5.1 Hypotension

Symptomatic hypotension is possible, particularly in patients with severe aortic stenosis. Because of the gradual onset of action, acute hypotension is unlikely.

5.2 Increased Angina or Myocardial Infarction

Worsening angina and acute myocardial infarction can develop after starting or increasing the dose of amlodipine, particularly in patients with severe obstructive coronary artery disease.

5.3 Patients with Hepatic Failure

Because amlodipine is extensively metabolized by the liver and the plasma elimination half-life ($t_{1/2}$) is 56 hours in patients with impaired hepatic function, titrate slowly when administering amlodipine to patients with severe hepatic impairment.

6 ADVERSE REACTIONS

6.1 Clinical Trials Experience

Because clinical trials are conducted under widely varying conditions, adverse reaction rates observed in the clinical trials of a drug cannot be directly compared to rates in the clinical trials of another drug and may not reflect the rates observed in practice.

Amlodipine has been evaluated for safety in more than 11,000 patients in U.S. and foreign clinical trials. In general, treatment with amlodipine was well-tolerated at doses up to 10 mg daily. Most adverse reactions reported during therapy with amlodipine were of mild or moderate severity. In controlled clinical trials directly comparing amlodipine (N=1730) at doses up to 10 mg to placebo (N=1250), discontinuation of amlodipine because of adverse reactions was required in only about 1.5% of patients and was not significantly different from placebo (about 1%). The most commonly reported side effects more frequent than placebo are reflected in the table below. The incidence (%) of side effects that occurred in a dose related manner are as follows:

	Amlodipine				Placebo N=520
	2.5 mg N=275	5 mg N=296	10 mg N=268		
Edema	1.8	3.0	10.8		0.6
Dizziness	1.1	3.4	3.4		1.5
Flushing	0.7	1.4	2.6		0.0
Palpitation	0.7	1.4	4.5		0.6

Other adverse reactions that were not clearly dose related but were reported with an incidence greater than 1.0% in placebo-controlled clinical trials include the following:

	Amlodipine (%) (N=1730)	Placebo (%) (N=1250)
Fatigue	4.5	2.8
Nausea	2.9	1.9
Abdominal Pain	1.6	0.3
Somnolence	1.4	0.6

For several adverse experiences that appear to be drug and dose related, there was a greater incidence in women than men associated with amlodipine treatment as shown in the following table:

	Amlodipine		Placebo	
	Male = % (N=1218)	Female=% (N=512)	Male=% (N=914)	Female=% (N=336)
Edema	5.6	14.6	1.4	5.1
Flushing	1.5	4.5	0.3	0.9
Palpitations	1.4	3.3	0.9	0.9
Somnolence	1.3	1.6	0.8	0.3

The following events occurred in <1% but >0.1% of patients in controlled clinical trials or under conditions of open trials or marketing experience where a causal relationship is uncertain; they are listed to alert the physician to a possible relationship:

Cardiovascular: arrhythmia (including ventricular tachycardia and atrial fibrillation), bradycardia, chest pain, peripheral ischemia, syncope, tachycardia, vasculitis.

Central and Peripheral Nervous System: hypoesthesia, neuropathy peripheral, paresthesia, tremor, vertigo.

Gas trointes tinal: anorexia, constipation, dysphagia, diarrhea, flatulence, pancreatitis, vomiting, gingival hyperplasia.

General: allergic reaction, asthenia, ¹back pain, hot flushes, malaise, pain, rigors, weight gain, weight decrease.

Musculoskeletal System: arthralgia, arthrosis, muscle cramps, ¹ myalgia.

Psychiatric: sexual dysfunction (male ¹ and female), insomnia, nervousness, depression, abnormal dreams, anxiety, depersonalization.

Respiratory System: dyspnea, ¹epistaxis.

Skin and Appendages: angioedema, erythema multiforme, pruritus, ¹ rash, ¹rash erythematous, rash maculopapular.

Special Senses: abnormal vision, conjunctivitis, diplopia, eye pain, tinnitus.

Urinary System: micturition frequency, micturition disorder, nocturia.

Autonomic Nervous System: dry mouth, sweating increased.

Metabolic and Nutritional: hyperglycemia, thirst.

Hemopoietic: leukopenia, purpura, thrombocytopenia.

¹ These events occurred in less than 1% in placebo-controlled trials, but the incidence of these side effects was between 1% and 2% in all multiple dose studies.

Amlodipine therapy has not been associated with clinically significant changes in routine laboratory tests. No clinically relevant changes were noted in serum potassium, serum glucose, total triglycerides, total cholesterol, HDL cholesterol, uric acid, blood urea nitrogen, or creatinine.

In the CAMELOT and PREVENT studies [*see Clinical Studies (14.4)*], the adverse event profile was similar to that reported previously (see above), with the most common adverse event being peripheral edema.

6.2 Postmarketing Experience

Because these reactions are reported voluntarily from a population of uncertain size, it is not always possible to reliably estimate their frequency or establish a causal relationship to drug exposure.

The following postmarketing event has been reported infrequently where a causal relationship is uncertain: gynecomastia. In postmarketing experience, jaundice and hepatic enzyme elevations (mostly consistent with cholestasis or hepatitis), in some cases severe enough to require hospitalization, have been reported in association with use of amlodipine.

Postmarketing reporting has also revealed a possible association between extrapyramidal disorder and amlodipine.

Amlodipine has been used safely in patients with chronic obstructive pulmonary disease, well-compensated congestive heart failure, coronary artery disease, peripheral vascular disease, diabetes mellitus, and abnormal lipid profiles.

7 DRUG INTERACTIONS

7.1 Impact of Other Drugs on Amlodipine

CYP3A Inhibitors

Co-administration with CYP3A inhibitors (moderate and strong) results in increased systemic exposure to amlodipine and may require dose reduction. Monitor for symptoms of hypotension and edema when amlodipine is co-administered with CYP3A inhibitors to determine the need for dose adjustment [see *Clinical Pharmacology (12.3)*].

CYP3A Inducers

No information is available on the quantitative effects of CYP3A inducers on amlodipine. Blood pressure should be closely monitored when amlodipine is co-administered with CYP3A inducers.

Sildenafil

Monitor for hypotension when sildenafil is co-administered with amlodipine [see *Clinical Pharmacology (12.2)*].

7.2 Impact of Amlodipine on Other Drugs

Simvastatin

Co-administration of simvastatin with amlodipine increases the systemic exposure of simvastatin. Limit the dose of simvastatin in patients on amlodipine to 20 mg daily [see *Clinical Pharmacology (12.3)*].

Immunosuppressants

Amlodipine may increase the systemic exposure of cyclosporine or tacrolimus when co-administered. Frequent monitoring of trough blood levels of cyclosporine and tacrolimus is recommended and adjust the dose when appropriate [see *Clinical Pharmacology (12.3)*].

8 USE IN SPECIFIC POPULATIONS

8.1 Pregnancy

Pregnancy Category C

There are no adequate and well-controlled studies in pregnant women. Amlodipine should be used during pregnancy only if the potential benefit justifies the risk to the fetus.

No evidence of teratogenicity or other embryo/fetal toxicity was found when pregnant rats and rabbits were treated orally with amlodipine maleate at doses up to 10 mg amlodipine/kg/day (respectively, 8 times² and 23 times² the maximum recommended human dose of 10 mg on a mg/m² basis) during their respective periods of major organogenesis. However, litter size was significantly decreased (by about 50%) and the number of intrauterine deaths was significantly increased (about 5-fold) in rats receiving amlodipine maleate at a dose equivalent to 10 mg amlodipine/kg/day for 14 days before mating and throughout mating and gestation. Amlodipine maleate has been shown to prolong both the gestation period and the duration of labor in rats at this dose.

²Based on patient weight of 50 kg.

8.3 Nursing Mothers

It is not known whether amlodipine is excreted in human milk. In the absence of this information, it is recommended that nursing be discontinued while amlodipine is administered.

8.4 Pediatric Use

Amlodipine (2.5 to 5 mg daily) is effective in lowering blood pressure in patients 6 to 17 years [see *Clinical Studies (14.1)*]. Effect of amlodipine on blood pressure in patients less than 6 years of age is not known.

8.5 Geriatric Use

Clinical studies of amlodipine did not include sufficient numbers of subjects aged 65 and over to determine whether they respond differently from younger subjects. Other reported clinical experience has not identified differences in responses between the elderly and younger patients. In general, dose selection for an elderly patient should be cautious, usually starting at the low end of the dosing range, reflecting the greater frequency of decreased hepatic, renal, or cardiac function, and of concomitant disease or other drug therapy. Elderly patients have decreased clearance of amlodipine with a resulting increase of AUC of approximately 40–60%, and a lower initial dose may be required [see *Dosage and Administration (2.1)*].

10 OVERDOSAGE

Overdosage might be expected to cause excessive peripheral vasodilation with marked hypotension and possibly a reflex tachycardia. In humans, experience with intentional overdosage of amlodipine is limited.

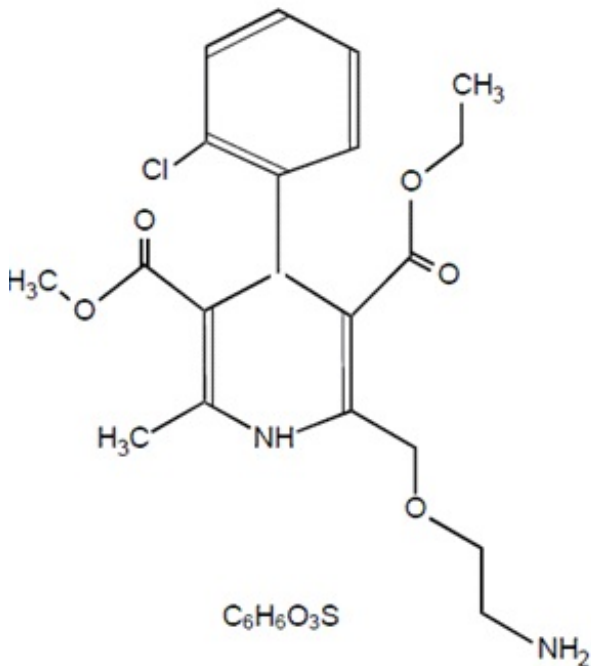
Single oral doses of amlodipine maleate equivalent to 40 mg amlodipine/kg and 100 mg amlodipine/kg in mice and rats, respectively, caused deaths. Single oral amlodipine maleate doses equivalent to 4 or more mg amlodipine/kg or higher in dogs (11 or more times the maximum recommended human dose on a mg/m² basis) caused a marked peripheral vasodilation and hypotension.

If massive overdose should occur, initiate active cardiac and respiratory monitoring. Frequent blood pressure measurements are essential. Should hypotension occur, provide cardiovascular support including elevation of the extremities and the judicious administration of fluids. If hypotension remains unresponsive to these conservative measures, consider administration of vasopressors (such as phenylephrine) with attention to circulating volume and urine output. As amlodipine is highly protein bound, hemodialysis is not likely to be of benefit.

11 DESCRIPTION

Amlodipine besylate, USP is the besylate salt of amlodipine, a long-acting calcium channel blocker.

Amlodipine besylate, USP is chemically described as 3-Ethyl-5-methyl (±)-2-[(2-aminoethoxy)methyl] 4-(2-chlorophenyl)-1,4-dihydro-6-methyl-3,5 pyridinedicarboxylate, monobenzenesulphonate. Its molecular formula is C₂₀H₂₅ClN₂O₅•C₆H₆O₃S and its structural formula is:



Amlodipine besylate, USP is a white crystalline powder with a molecular weight of 567.1. It is slightly soluble in water and sparingly soluble in ethanol. Amlodipine besylate Tablets are formulated as white tablets equivalent to 2.5, 5, and 10 mg of amlodipine for oral administration. In addition to the active ingredient, amlodipine besylate, USP, each tablet contains the following inactive ingredients: microcrystalline cellulose, dibasic calcium phosphate anhydrous, sodium starch glycolate, and magnesium stearate.

12 CLINICAL PHARMACOLOGY

12.1 Mechanism of Action

Amlodipine is a dihydropyridine calcium antagonist (calcium ion antagonist or slow-channel blocker) that inhibits the transmembrane influx of calcium ions into vascular smooth muscle and cardiac muscle. Experimental data suggest that amlodipine binds to both dihydropyridine and nondihydropyridine binding sites. The contractile processes of cardiac muscle and vascular smooth muscle are dependent upon the movement of extracellular calcium ions into these cells through specific ion channels. Amlodipine inhibits calcium ion influx across cell membranes selectively, with a greater effect on vascular smooth muscle cells than on cardiac muscle cells. Negative inotropic effects can be detected *in vitro* but such effects have not been seen in intact animals at therapeutic doses. Serum calcium concentration is not affected by amlodipine. Within the physiologic pH range, amlodipine is an ionized compound (pKa=8.6), and its kinetic interaction with the calcium channel receptor is characterized by a gradual rate of association and dissociation with the receptor binding site, resulting in a gradual onset of effect.

Amlodipine is a peripheral arterial vasodilator that acts directly on vascular smooth muscle to cause a reduction in peripheral vascular resistance and reduction in blood pressure.

The precise mechanisms by which amlodipine relieves angina have not been fully delineated, but are thought to include the following:

Exertional Angina: In patients with exertional angina, amlodipine reduces the total peripheral resistance (afterload) against which the heart works and reduces the rate pressure product, and thus myocardial oxygen demand, at any given level of exercise.

Vasospastic Angina: Amlodipine has been demonstrated to block constriction and restore blood flow in

coronary arteries and arterioles in response to calcium, potassium epinephrine, serotonin, and thromboxane A₂ analog in experimental animal models and in human coronary vessels *in vitro*. This inhibition of coronary spasm is responsible for the effectiveness of amlodipine in vasospastic (Prinzmetal's or variant) angina.

12.2 Pharmacodynamics

Hemodynamics: Following administration of therapeutic doses to patients with hypertension, amlodipine produces vasodilation resulting in a reduction of supine and standing blood pressures. These decreases in blood pressure are not accompanied by a significant change in heart rate or plasma catecholamine levels with chronic dosing. Although the acute intravenous administration of amlodipine decreases arterial blood pressure and increases heart rate in hemodynamic studies of patients with chronic stable angina, chronic oral administration of amlodipine in clinical trials did not lead to clinically significant changes in heart rate or blood pressures in normotensive patients with angina.

With chronic once daily oral administration, antihypertensive effectiveness is maintained for at least 24 hours. Plasma concentrations correlate with effect in both young and elderly patients. The magnitude of reduction in blood pressure with amlodipine is also correlated with the height of pretreatment elevation; thus, individuals with moderate hypertension (diastolic pressure 105–114 mmHg) had about a 50% greater response than patients with mild hypertension (diastolic pressure 90–104 mmHg). Normotensive subjects experienced no clinically significant change in blood pressures (+1/–2 mmHg).

In hypertensive patients with normal renal function, therapeutic doses of amlodipine resulted in a decrease in renal vascular resistance and an increase in glomerular filtration rate and effective renal plasma flow without change in filtration fraction or proteinuria.

As with other calcium channel blockers, hemodynamic measurements of cardiac function at rest and during exercise (or pacing) in patients with normal ventricular function treated with amlodipine have generally demonstrated a small increase in cardiac index without significant influence on dP/dt or on left ventricular end diastolic pressure or volume. In hemodynamic studies, amlodipine has not been associated with a negative inotropic effect when administered in the therapeutic dose range to intact animals and man, even when co-administered with beta-blockers to man. Similar findings, however, have been observed in normal or well-compensated patients with heart failure with agents possessing significant negative inotropic effects.

Electrophysiologic Effects: Amlodipine does not change sinoatrial nodal function or atrioventricular conduction in intact animals or man. In patients with chronic stable angina, intravenous administration of 10 mg did not significantly alter A-H and H-V conduction and sinus node recovery time after pacing. Similar results were obtained in patients receiving amlodipine and concomitant beta-blockers. In clinical studies in which amlodipine was administered in combination with beta-blockers to patients with either hypertension or angina, no adverse effects on electrocardiographic parameters were observed. In clinical trials with angina patients alone, Amlodipine therapy did not alter electrocardiographic intervals or produce higher degrees of AV blocks.

Drug interactions

Sildenafil: When amlodipine and sildenafil were used in combination, each agent independently exerted its own blood pressure lowering effect [*see Drug Interactions (7.1)*].

12.3 Pharmacokinetics

After oral administration of therapeutic doses of amlodipine, absorption produces peak plasma concentrations between 6 and 12 hours. Absolute bioavailability has been estimated to be between 64 and 90%. The bioavailability of amlodipine is not altered by the presence of food.

Amlodipine is extensively (about 90%) converted to inactive metabolites via hepatic metabolism with 10% of the parent compound and 60% of the metabolites excreted in the urine. *Ex vivo* studies have shown that approximately 93% of the circulating drug is bound to plasma proteins in hypertensive

patients. Elimination from the plasma is biphasic with a terminal elimination half-life of about 30–50 hours. Steady-state plasma levels of amlodipine are reached after 7 to 8 days of consecutive daily dosing.

The pharmacokinetics of amlodipine are not significantly influenced by renal impairment. Patients with renal failure may therefore receive the usual initial dose.

Elderly patients and patients with hepatic insufficiency have decreased clearance of amlodipine with a resulting increase in AUC of approximately 40–60%, and a lower initial dose may be required. A similar increase in AUC was observed in patients with moderate to severe heart failure.

Drug interactions

In vitro data indicate that amlodipine has no effect on the human plasma protein binding of digoxin, phenytoin, warfarin, and indomethacin.

Impact of other drugs on amlodipine

Co-administered cimetidine, magnesium-and aluminum hydroxide antacids, sildenafil, and grapefruit juice have no impact on the exposure to amlodipine.

CYP3A inhibitors: Co-administration of a 180 mg daily dose of diltiazem with 5 mg amlodipine in elderly hypertensive patients resulted in a 60% increase in amlodipine systemic exposure. Erythromycin co-administration in healthy volunteers did not significantly change amlodipine systemic exposure. However, strong inhibitors of CYP3A (e.g., itraconazole, clarithromycin) may increase the plasma concentrations of amlodipine to a greater extent [see *Drug Interactions (7.1)*].

Impact of amlodipine on other drugs

Co-administered amlodipine does not affect the exposure to atorvastatin, digoxin, ethanol and the warfarin prothrombin response time.

Simvastatin: Co-administration of multiple doses of 10 mg of amlodipine with 80 mg simvastatin resulted in a 77% increase in exposure to simvastatin compared to simvastatin alone [see *Drug Interactions (7.2)*].

Cyclosporine: A prospective study in renal transplant patients (N=11) showed on an average of 40% increase in trough cyclosporine levels when concomitantly treated with amlodipine [see *Drug Interactions (7.2)*].

Tacrolimus: A prospective study in healthy Chinese volunteers (N=9) with CYP3A5 expressers showed a 2.5-to 4-fold increase in tacrolimus exposure when concomitantly administered with amlodipine compared to tacrolimus alone. This finding was not observed in CYP3A5 non-expressers (N= 6). However, a 3-fold increase in plasma exposure to tacrolimus in a renal transplant patient (CYP3A5 non-expresser) upon initiation of amlodipine for the treatment of post-transplant hypertension resulting in reduction of tacrolimus dose has been reported. Irrespective of the CYP3A5 genotype status, the possibility of an interaction cannot be excluded with these drugs [see *Drug Interactions (7.2)*].

12.4 Pediatric Patients

Sixty-two hypertensive patients aged 6 to 17 years received doses of amlodipine between 1.25 mg and 20 mg. Weight-adjusted clearance and volume of distribution were similar to values in adults.

13 NONCLINICAL TOXICOLOGY

13.1 Carcinogenesis, Mutagenesis, Impairment of Fertility

Rats and mice treated with amlodipine maleate in the diet for up to two years, at concentrations calculated to provide daily dosage levels of 0.5, 1.25, and 2.5 amlodipine mg/kg/day, showed no evidence of a carcinogenic effect of the drug. For the mouse, the highest dose was, on a mg/m² basis,

similar to the maximum recommended human dose of 10 mg amlodipine/day.³ For the rat, the highest dose was, on a mg/m² basis, about twice the maximum recommended human dose.³

Mutagenicity studies conducted with amlodipine maleate revealed no drug related effects at either the gene or chromosome level.

There was no effect on the fertility of rats treated orally with amlodipine maleate (males for 64 days and females for 14 days prior to mating) at doses up to 10 mg amlodipine/kg/day (8 times the maximum recommended human dose³ of 10 mg/day on a mg/m² basis).

³Based on patient weight of 50 kg

14 CLINICAL STUDIES

14.1 Effects in Hypertension

Adult Patients

The antihypertensive efficacy of amlodipine has been demonstrated in a total of 15 double-blind, placebo-controlled, randomized studies involving 800 patients on amlodipine and 538 on placebo. Once daily administration produced statistically significant placebo-corrected reductions in supine and standing blood pressures at 24 hours postdose, averaging about 12/6 mmHg in the standing position and 13/7 mmHg in the supine position in patients with mild to moderate hypertension. Maintenance of the blood pressure effect over the 24-hour dosing interval was observed, with little difference in peak and trough effect. Tolerance was not demonstrated in patients studied for up to 1 year. The 3 parallel, fixed dose, dose response studies showed that the reduction in supine and standing blood pressures was dose-related within the recommended dosing range. Effects on diastolic pressure were similar in young and older patients. The effect on systolic pressure was greater in older patients, perhaps because of greater baseline systolic pressure. Effects were similar in black patients and in white patients.

Pediatric Patients

Two hundred sixty-eight hypertensive patients aged 6 to 17 years were randomized first to amlodipine 2.5 or 5 mg once daily for 4 weeks and then randomized again to the same dose or to placebo for another 4 weeks. Patients receiving 2.5 mg or 5 mg at the end of 8 weeks had significantly lower systolic blood pressure than those secondarily randomized to placebo. The magnitude of the treatment effect is difficult to interpret, but it is probably less than 5 mmHg systolic on the 5 mg dose and 3.3 mmHg systolic on the 2.5 mg dose. Adverse events were similar to those seen in adults.

14.2 Effects in Chronic Stable Angina

The effectiveness of 5–10 mg/day of amlodipine in exercise-induced angina has been evaluated in 8 placebo-controlled, double-blind clinical trials of up to 6 weeks duration involving 1038 patients (684 Amlodipine, 354 placebo) with chronic stable angina. In 5 of the 8 studies, significant increases in exercise time (bicycle or treadmill) were seen with the 10 mg dose. Increases in symptom-limited exercise time averaged 12.8% (63 sec) for amlodipine 10 mg, and averaged 7.9% (38 sec) for amlodipine 5 mg. Amlodipine 10 mg also increased time to 1 mm ST segment deviation in several studies and decreased angina attack rate. The sustained efficacy of amlodipine in angina patients has been demonstrated over long-term dosing. In patients with angina, there were no clinically significant reductions in blood pressures (4/1 mmHg) or changes in heart rate (+0.3 bpm).

14.3 Effects in Vasospastic Angina

In a double-blind, placebo-controlled clinical trial of 4 weeks duration in 50 patients, amlodipine therapy decreased attacks by approximately 4/week compared with a placebo decrease of approximately 1/week (p<0.01). Two of 23 amlodipine and 7 of 27 placebo patients discontinued from the study due to lack of clinical improvement.

14.4 Effects in Documented Coronary Artery Disease

In PREVENT, 825 patients with angiographically documented coronary artery disease were randomized to amlodipine (5–10 mg once daily) or placebo and followed for 3 years. Although the study did not show significance on the primary objective of change in coronary luminal diameter as assessed by quantitative coronary angiography, the data suggested a favorable outcome with respect to fewer hospitalizations for angina and revascularization procedures in patients with CAD.

CAMELOT enrolled 1318 patients with CAD recently documented by angiography, without left main coronary disease and without heart failure or an ejection fraction <40%. Patients (76% males, 89% Caucasian, 93% enrolled at US sites, 89% with a history of angina, 52% without PCI, 4% with PCI and no stent, and 44% with a stent) were randomized to double-blind treatment with either amlodipine (5–10 mg once daily) or placebo in addition to standard care that included aspirin (89%), statins (83%), beta-blockers (74%), nitroglycerin (50%), anti-coagulants (40%), and diuretics (32%), but excluded other calcium channel blockers. The mean duration of follow-up was 19 months. The primary endpoint was the time to first occurrence of one of the following events: hospitalization for angina pectoris, coronary revascularization, myocardial infarction, cardiovascular death, resuscitated cardiac arrest, hospitalization for heart failure, stroke/TIA, or peripheral vascular disease. A total of 110 (16.6%) and 151 (23.1%) first events occurred in the amlodipine and placebo groups, respectively, for a hazard ratio of 0.691 (95% CI: 0.540–0.884, $p = 0.003$). The primary endpoint is summarized in Figure 1 below. The outcome of this study was largely derived from the prevention of hospitalizations for angina and the prevention of revascularization procedures (see Table 1). Effects in various subgroups are shown in Figure 2.

In an angiographic substudy ($n=274$) conducted within CAMELOT, there was no significant difference between amlodipine and placebo on the change of atheroma volume in the coronary artery as assessed by intravascular ultrasound

Figure 1 - Kaplan-Meier Analysis of Composite Clinical Outcomes for amlodipine versus Placebo

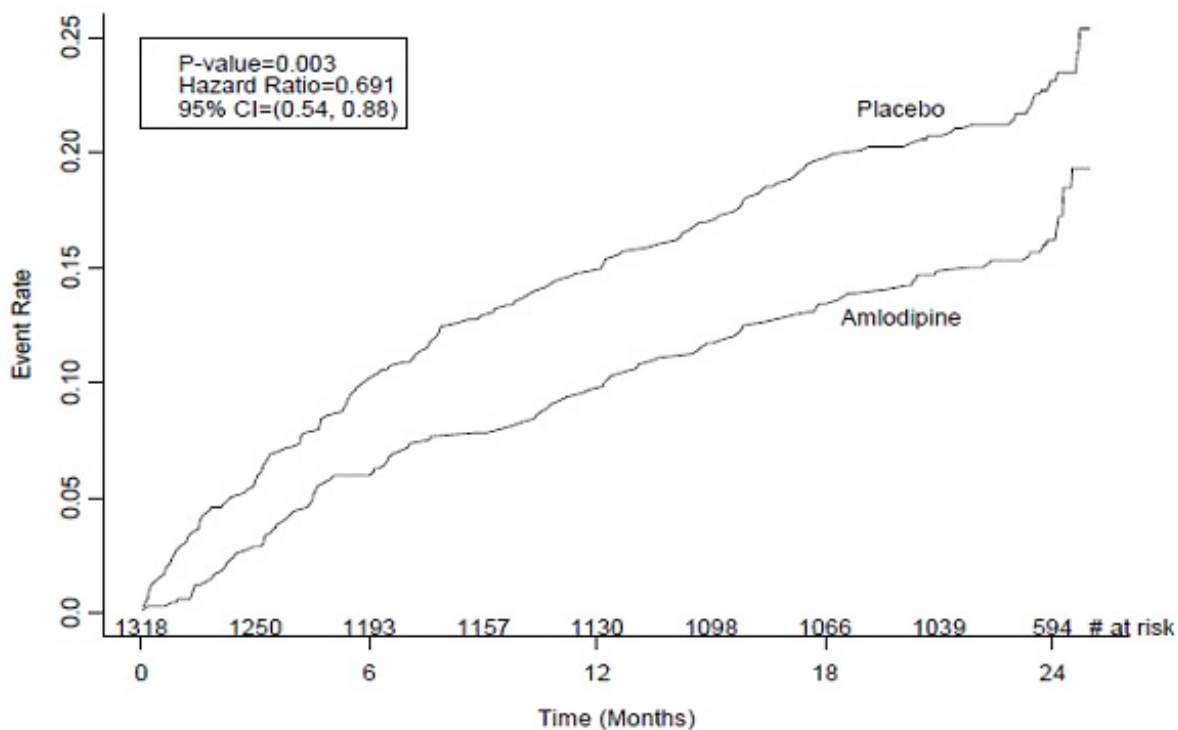


Figure 2 – Effects on Primary Endpoint of amlodipine versus Placebo across Sub-Groups

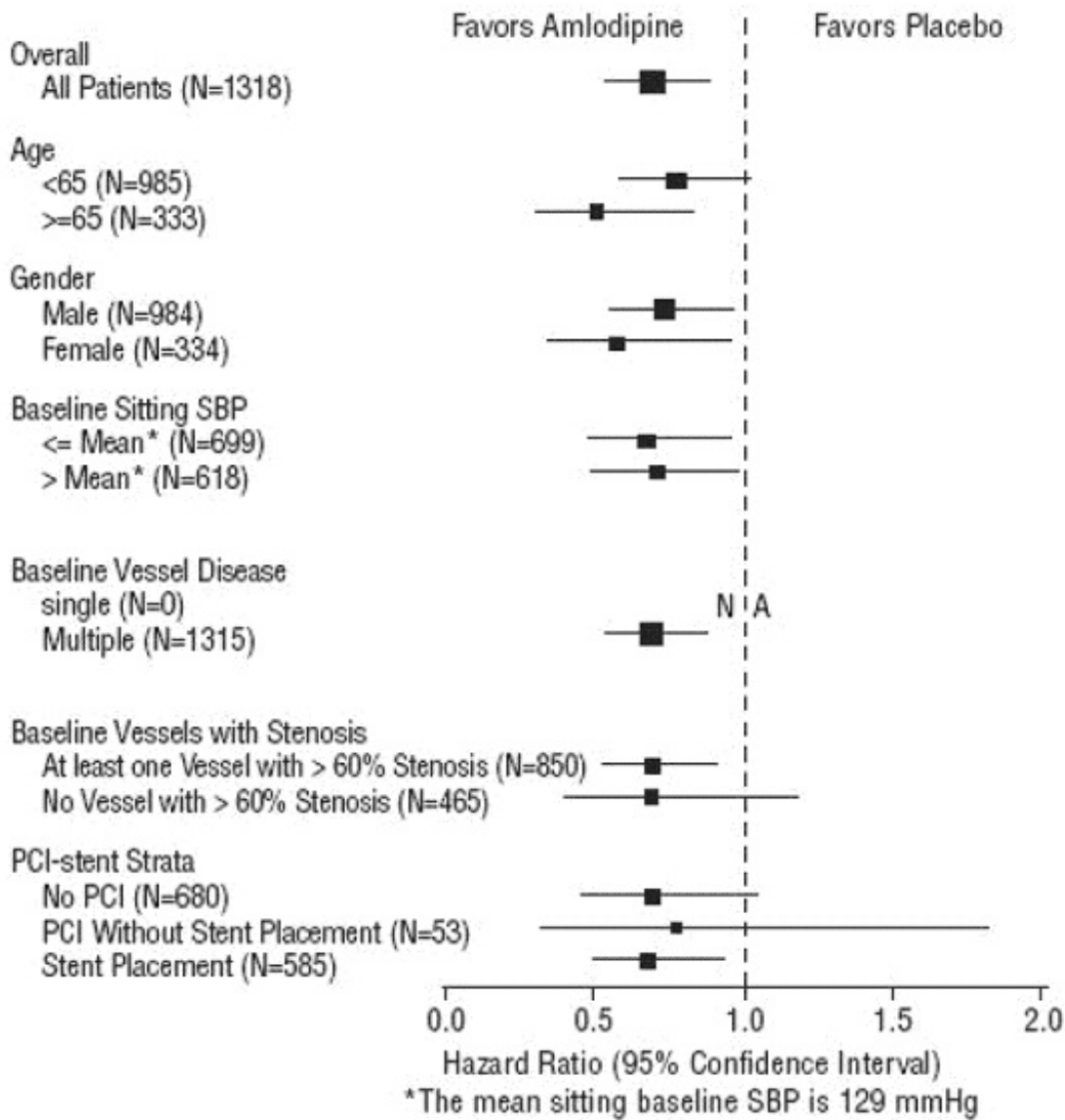


Table 1 below summarizes the significant composite endpoint and clinical outcomes from the composites of the primary endpoint. The other components of the primary endpoint including cardiovascular death, resuscitated cardiac arrest, myocardial infarction, hospitalization for heart failure, stroke/TIA, or peripheral vascular disease did not demonstrate a significant difference between amlodipine and placebo.

Table 1. Incidence of Significant Clinical Outcomes for CAMELOT

Clinical outcomes N (%)	Amlodipine (N=663)	Placebo (N=655)	Risk Reduction (p-value)
Composite CV EndPoint	110 (16.6)	151 (23.1)	31% (0.003)
Hospitalization for Angina*	51 (7.7)	84 (12.8)	42% (0.002)
Coronary Revascularization*	78 (11.8)	103 (15.7)	27% (0.033)

--	--	--	--

* Total patients with these events

14.5 Studies in Patients with Heart Failure

Amlodipine has been compared to placebo in four 8–12 week studies of patients with NYHA Class II/III heart failure, involving a total of 697 patients. In these studies, there was no evidence of worsened heart failure based on measures of exercise tolerance, NYHA classification, symptoms, or left ventricular ejection fraction. In a long-term (follow-up at least 6 months, mean 13.8 months) placebo-controlled mortality/morbidity study of amlodipine 5–10 mg in 1153 patients with NYHA Classes III (n=931) or IV (n=222) heart failure on stable doses of diuretics, digoxin, and ACE inhibitors, amlodipine had no effect on the primary endpoint of the study which was the combined endpoint of all-cause mortality and cardiac morbidity (as defined by life-threatening arrhythmia, acute myocardial infarction, or hospitalization for worsened heart failure), or on NYHA classification, or symptoms of heart failure. Total combined all-cause mortality and cardiac morbidity events were 222/571 (39%) for patients on amlodipine and 246/583 (42%) for patients on placebo; the cardiac morbid events represented about 25% of the endpoints in the study.

Another study (PRAISE-2) randomized patients with NYHA Class III (80%) or IV (20%) heart failure without clinical symptoms or objective evidence of underlying ischemic disease, on stable doses of ACE inhibitors (99%), digitalis (99%), and diuretics (99%), to placebo (n=827) or amlodipine (n=827) and followed them for a mean of 33 months. There was no statistically significant difference between amlodipine and placebo in the primary endpoint of all-cause mortality (95% confidence limits from 8% reduction to 29% increase on amlodipine). With amlodipine there were more reports of pulmonary edema.

16 HOW SUPPLIED/STORAGE AND HANDLING

16.1 How Supplied

Amlodipine Besylate Tablets USP 5mg

White to off-white round flat faced bevelled edged tablets debossed with 'U' on one side and '242' on the other side

NDC 12634-562-00 Bottles of 10

NDC 12634-562-01 Bottles of 100

NDC 12634-562-09 Bottles of 35

NDC 12634-562-12 Bottles of 120

NDC 12634-562-18 Bottles of 180

NDC 12634-562-40 Bottles of 40

NDC 12634-562-42 Bottles of 42

NDC 12634-562-45 Bottles of 45

NDC 12634-562-50 Bottles of 50

NDC 12634-562-52 Blister Pack of 12

NDC 12634-562-54 Blister Pack of 14

NDC 12634-562-57 Blister Pack of 20

NDC 12634-562-59 Blister Pack of 30

NDC 12634-562-60 Bottles of 60

NDC 12634-562-61 Blister Pack of 10
NDC 12634-562-63 Blister Pack of 3
NDC 12634-562-66 Blister Pack of 6
NDC 12634-562-67 Blister Pack of 7
NDC 12634-562-69 Blister Pack of 9
NDC 12634-562-71 Bottles of 30
NDC 12634-562-74 Bottles of 24
NDC 12634-562-78 Bottles of 28
NDC 12634-562-79 Bottles of 25
NDC 12634-562-80 Bottles of 20
NDC 12634-562-81 Bottles of 21
NDC 12634-562-82 Bottles of 12
NDC 12634-562-84 Bottles of 14
NDC 12634-562-85 Bottles of 15
NDC 12634-562-90 Bottles of 90
NDC 12634-562-91 Blister Pack of 1
NDC 12634-562-92 Bottles of 2
NDC 12634-562-93 Bottles of 3
NDC 12634-562-94 Bottles of 4
NDC 12634-562-95 Bottles of 5
NDC 12634-562-96 Bottles of 6
NDC 12634-562-97 Bottles of 7
NDC 12634-562-98 Bottles of 8
NDC 12634-562-99 Bottles of 9

16.2 Storage

Store at 20° to 25°C (68° to 77° F); excursions permitted between 15° to 30°C (59° to 86°F) [see USP Controlled Room Temperature] and dispense in tight, light-resistant containers.

Additional Summary of Information About leaflets can be obtained by calling Unichem at 1-866-562-4616.

Manufactured by:

UNICHEM LABORATORIES LTD.

Pilerne Ind. Estate, Pilerne, Bardez,

Goa 403 511, India.

and

UNICHEM LABORATORIES LTD.

Ind Area, Meerut Road, Ghaziabad – 201 003, India

Marketed by:



UNICHEM
PHARMACEUTICALS (USA), INC.

Hasbrouck Heights, NJ 07604

05-R-06/2016

13008422

Repackaged & Distributed by:

Apotheca Inc.

Phoenix, AZ 85006

SUMMARY OF INFORMATION ABOUT

Amlodipine Besylate Tablets USP

Read this information carefully before you start taking **amlodipine besylate tablets** and each time you refill your prescription. There may be new information. This information does not replace talking with your doctor. If you have any questions about **amlodipine besylate tablets**, ask your doctor. Your doctor will know if **amlodipine besylate tablets** are right for you.

What are amlodipine besylate tablets?

Amlodipine besylate tablets are a type of medicine known as a calcium channel blocker (CCB). It is used to treat high blood pressure (hypertension) and a type of chest pain called angina. It can be used by itself or with other medicines to treat these conditions.

High Blood Pressure (hypertension)

High blood pressure comes from blood pushing too hard against your blood vessels. **Amlodipine besylate tablets** relaxes your blood vessels, which lets your blood flow more easily and helps lower your blood pressure. Drugs that lower blood pressure lower your risk of having a stroke or heart attack.

Angina

Angina is a pain or discomfort that keeps coming back when part of your heart does not get enough blood. Angina feels like a pressing or squeezing pain, usually in your chest under the breastbone. Sometimes you can feel it in your shoulders, arms, neck, jaws, or back. **Amlodipine besylate tablets** can relieve this pain.

Who should not use amlodipine besylate tablets?

Do not use **amlodipine besylate tablets** if you are allergic to amlodipine (the active ingredient in **amlodipine besylate tablets**), or to the inactive ingredients. Your doctor or pharmacist can give you a list of these ingredients.

What should I tell my doctor before taking amlodipine besylate tablets?

Tell your doctor about any prescription and non-prescription medicines you are taking, including natural or herbal remedies. Tell your doctor if you:

- ever had heart disease
- ever had liver problems
- are pregnant, or plan to become pregnant. Your doctor will decide if **amlodipine besylate tablets** is the best treatment for you.
- are breast-feeding. Do not breast-feed while taking **amlodipine besylate tablets**. You can stop breast-feeding or take a different medicine.

How should I take amlodipine besylate tablets?

- Take **amlodipine besylate tablets** once a day, with or without food.
- It may be easier to take your dose if you do it at the same time every day, such as with breakfast or dinner, or at bedtime. Do not take more than one dose of **amlodipine besylate tablets** at a time.
- If you miss a dose, take it as soon as you remember. Do not take **amlodipine besylate tablets** if it has been more than 12 hours since you missed your last dose. Wait and take the next dose at your regular time.
- **Other medicines:** You can use nitroglycerin and **amlodipine besylate tablets** together. If you take nitroglycerin for angina, don't stop taking it while you are taking **amlodipine besylate tablets**.
- While you are taking **amlodipine besylate tablets**, do not stop taking your other prescription medicines, including any other blood pressure medicines, without talking to your doctor.
- If you took too much **amlodipine besylate tablets**, call your doctor or Poison Control Center, or go to the nearest hospital emergency room right away.

What should I avoid while taking amlodipine besylate tablets?

- **Do not** breast-feed. It is not known if **amlodipine** will pass through your milk.
- **Do not** start any new prescription or non-prescription medicines or supplements, unless you check with your doctor first.

What are the possible side effects of amlodipine besylate tablets?

Amlodipine besylate tablets may cause the following side effects. Most side effects are mild or moderate:

- swelling of your legs or ankles
- tiredness, extreme sleepiness
- stomach pain, nausea
- dizziness
- flushing (hot or warm feeling in your face)
- arrhythmia (irregular heartbeat)
- heart palpitations (very fast heartbeat)
- muscle rigidity, tremor and/or abnormal muscle movement

It is rare, but when you first start taking **amlodipine besylate tablets** or increase your dose, you may have a heart attack or your angina may get worse. If that happens, call your doctor right away or go directly to a hospital emergency room.

Tell your doctor if you are concerned about any side effects you experience. These are not all the possible side effects of **amlodipine besylate tablets**. For a complete list, ask your doctor or pharmacist.

How do I store amlodipine besylate tablets?

Keep **amlodipine besylate tablets** away from children. Store at 20° to 25°C (68° to 77° F); excursions permitted between 15° to 30°C (59° to 86°F) [see USP Controlled Room Temperature] and dispense in tight, light-resistant containers. Keep **amlodipine besylate tablets** out of the light. Do not store in the bathroom. Keep **amlodipine besylate tablets** in a dry place.

General advice about amlodipine besylate tablets

Sometimes, doctors will prescribe a medicine for a condition that is not written in the patient information leaflets. Only use **amlodipine besylate tablets** the way your doctor told you to. Do not give **amlodipine besylate tablets** to other people, even if they have the same symptoms you have. It may harm them.

You can ask your pharmacist or doctor for information about **amlodipine besylate tablets**, or you can contact Unichem Pharmaceuticals (USA), Inc., at 1 866-562-4616

Additional Summary of Information About leaflets can be obtained by calling Unichem at 1-866-562-4616.

Manufactured by:

UNICHEM LABORATORIES LTD.

Pilerne Ind. Estate, Pilerne, Bardez,

Goa 403 511, India.

and

UNICHEM LABORATORIES LTD.

Ind Area, Meerut Road, Ghaziabad – 201 003, India


Marketed by:



Hasbrouck Heights, NJ 07604

03-R-06/2016

13008422

See insert for full prescribing information.		Amlodipine Besylate 5mg 30 Tablets NDC: 12634-562-71	BULK SOURCE DATA	PRODUCT ID:
Amlodipine Besylate 5mg NDC: 12634-562-71 30 Tablets LOT: EXP:			Manufactured By: Unichem Laboratories LTD. Goa 403 511, India.	Debossed * U * - * 242 * Bulk NDC: 29300-242-10
Amlodipine Besylate 5mg NDC: 12634-562-71 30 Tablets LOT: EXP:			Call your doctor for Medical Advice about Side Effects. You may Report Side Effects to FDA at: 1-800-FDA-1088	OBTAIN MEDICAL ADVICE before taking non-prescription drugs, some may effect the action of this medication. It is very IMPORTANT that you take or use this EXACTLY AS DIRECTED. Do not skip doses or discontinue unless directed by your doctor. Keep this and all Medication Out of the Reach of Children.
Amlodipine Besylate 5mg NDC: 12634-562-71 30 Tablets LOT: EXP:			COMPARE TO: NORVASC® Rx Only Dispensed In A Tight, Light Resistant Container, As Defined in The USP, Using A Child Resistant Closure.	
Repackaged & Distributed by: Apotheca, Inc Phoenix, AZ 85006	WHOLESALE PHARMACEUTICALS APOTHECA, INC. SPECIALISTS IN GENERIC PHARMACEUTICALS Manufacturer • Distributor • Private Label REV. DATE: 01/2017	Directions: Take ____ tablet(s) by mouth ____ times a day, as directed by physician.		
			Store at 20° to 25°C (68° to 77°F) [see USP Controlled Room Temperature]	

AMLODIPINE BESYLATE

amlodipine besylate tablet

Product Information

Product Type	HUMAN PRESCRIPTION DRUG	Item Code (Source)	NDC:12634-562(NDC:29300-242)
Route of Administration	ORAL		

Active Ingredient/Active Moiety

Ingredient Name	Basis of Strength	Strength
AMLODIPINE BESYLATE (UNII: 864V2Q084H) (AMLODIPINE - UNII:1J444QC288)	AMLODIPINE	5 mg

Inactive Ingredients

Ingredient Name	Strength
ANHYDROUS DIBASIC CALCIUM PHOSPHATE (UNII: L11K75P92J)	
CELLULOSE, MICROCRYSTALLINE (UNII: OP1R32D61U)	
MAGNESIUM STEARATE (UNII: 70097M6I30)	
SODIUM STARCH GLYCOLATE TYPE A POTATO (UNII: 5856J3G2A2)	

Product Characteristics

Color	white (white to off-white)	Score	no score
Shape	ROUND	Size	9mm
Flavor		Imprint Code	U;242
Contains			

Packaging

#	Item Code	Package Description	Marketing Start Date	Marketing End Date
1	NDC:12634-562-00	10 in 1 BOTTLE; Type 0: Not a Combination Product	03/03/2014	
2	NDC:12634-562-01	100 in 1 BOTTLE; Type 0: Not a Combination Product	03/03/2014	
3	NDC:12634-562-09	35 in 1 BOTTLE; Type 0: Not a Combination Product	03/03/2014	
4	NDC:12634-562-12	120 in 1 BOTTLE; Type 0: Not a Combination Product	03/03/2014	
5	NDC:12634-562-18	180 in 1 BOTTLE; Type 0: Not a Combination Product	03/03/2014	
6	NDC:12634-562-40	40 in 1 BOTTLE; Type 0: Not a Combination Product	03/03/2014	
7	NDC:12634-562-42	42 in 1 BOTTLE; Type 0: Not a Combination Product	03/03/2014	
8	NDC:12634-562-45	45 in 1 BOTTLE; Type 0: Not a Combination Product	03/03/2014	
9	NDC:12634-562-50	50 in 1 BOTTLE; Type 0: Not a Combination Product	03/03/2014	
10	NDC:12634-562-52	12 in 1 BLISTER PACK; Type 0: Not a Combination Product	03/03/2014	
11	NDC:12634-562-54	14 in 1 BLISTER PACK; Type 0: Not a Combination Product	03/03/2014	
12	NDC:12634-562-57	20 in 1 BLISTER PACK; Type 0: Not a Combination Product	03/03/2014	
13	NDC:12634-562-59	30 in 1 BLISTER PACK; Type 0: Not a Combination Product	03/03/2014	
14	NDC:12634-562-60	60 in 1 BOTTLE; Type 0: Not a Combination Product	03/03/2014	
15	NDC:12634-562-61	10 in 1 BLISTER PACK; Type 0: Not a Combination Product	03/03/2014	
16	NDC:12634-562-63	3 in 1 BLISTER PACK; Type 0: Not a Combination Product	03/03/2014	
17	NDC:12634-562-66	6 in 1 BLISTER PACK; Type 0: Not a Combination Product	03/03/2014	
18	NDC:12634-562-	7 in 1 BLISTER PACK; Type 0: Not a Combination Product	03/03/2014	

10	67	7 in 1 BLISTER PACK; Type 0: Not a Combination Product	03/03/2014	
19	NDC:12634-562-69	9 in 1 BLISTER PACK; Type 0: Not a Combination Product	03/03/2014	
20	NDC:12634-562-71	30 in 1 BOTTLE; Type 0: Not a Combination Product	03/03/2014	
21	NDC:12634-562-74	24 in 1 BOTTLE; Type 0: Not a Combination Product	03/03/2014	
22	NDC:12634-562-78	28 in 1 BOTTLE; Type 0: Not a Combination Product	03/03/2014	
23	NDC:12634-562-79	25 in 1 BOTTLE; Type 0: Not a Combination Product	03/03/2014	
24	NDC:12634-562-80	20 in 1 BOTTLE; Type 0: Not a Combination Product	03/03/2014	
25	NDC:12634-562-81	21 in 1 BOTTLE; Type 0: Not a Combination Product	03/03/2014	
26	NDC:12634-562-82	12 in 1 BOTTLE; Type 0: Not a Combination Product	03/03/2014	
27	NDC:12634-562-84	14 in 1 BOTTLE; Type 0: Not a Combination Product	03/03/2014	
28	NDC:12634-562-85	15 in 1 BOTTLE; Type 0: Not a Combination Product	03/03/2014	
29	NDC:12634-562-90	90 in 1 BOTTLE; Type 0: Not a Combination Product	03/03/2014	
30	NDC:12634-562-91	1 in 1 BLISTER PACK; Type 0: Not a Combination Product	03/03/2014	
31	NDC:12634-562-92	2 in 1 BOTTLE; Type 0: Not a Combination Product	03/03/2014	
32	NDC:12634-562-93	3 in 1 BOTTLE; Type 0: Not a Combination Product	03/03/2014	
33	NDC:12634-562-94	4 in 1 BOTTLE; Type 0: Not a Combination Product	03/03/2014	
34	NDC:12634-562-95	5 in 1 BOTTLE; Type 0: Not a Combination Product	03/03/2014	
35	NDC:12634-562-96	6 in 1 BOTTLE; Type 0: Not a Combination Product	03/03/2014	
36	NDC:12634-562-97	7 in 1 BOTTLE; Type 0: Not a Combination Product	03/03/2014	
37	NDC:12634-562-98	8 in 1 BOTTLE; Type 0: Not a Combination Product	03/03/2014	
38	NDC:12634-562-99	9 in 1 BOTTLE; Type 0: Not a Combination Product	03/03/2014	

Marketing Information

Marketing Category	Application Number or Monograph Citation	Marketing Start Date	Marketing End Date
ANDA	ANDA203245	03/03/2014	

Labeler - Apotheca Inc. (051457844)

Establishment

Name	Address	ID/FEI	Business Operations
Apotheca Inc.		051457844	relabel(12634-562) , repack(12634-562)