

**MADE BY DENTISTS TOTAL CARE- sodium fluoride paste  
Oral Spotlight Care Inc**

*Disclaimer: Most OTC drugs are not reviewed and approved by FDA, however they may be marketed if they comply with applicable regulations and policies. FDA has not evaluated whether this product complies.*

-----  
**Made By Dentists™ Total Care Toothpaste**

**Drug Facts**

**Active ingredient:** Sodium Fluoride 0.24%

**Purpose:** Anticavity

**Use:** Aids in the prevention of cavities.

**Warnings:**

**Keep out of reach of children under 6 years of age.** If more than used for brushing is accidentally swallowed, get medical help or contact a Poison Control Center right away.

**Directions**

- Adults and children 2 years of age and older:  
Brush teeth thoroughly, preferably after each meal or at least twice a day, or as directed by a dentist or doctor.
- Instruct children under 6 years of age in good brushing and rinsing habits (to minimize swallowing), and only use a pea size amount.
- Supervise children as necessary until capable of using without supervision.
- Children under 2 years of age: Consult a dentist or doctor.

**Inactive Ingredients:**

Cellulose Gum, Cocamidopropyl Betaine, Flavor, Hydrated Silica, Sodium Bicarbonate, Sodium Tripolyphosphate, Sorbitol, Titanium Dioxide, Sodium Saccharin, Water

**Questions or comments?**

+1 (646) 980-6461

**Product Labeling**

**Made By Dentists™**

**Total Care**

**Toothpaste**

Fresh Mint Flavor

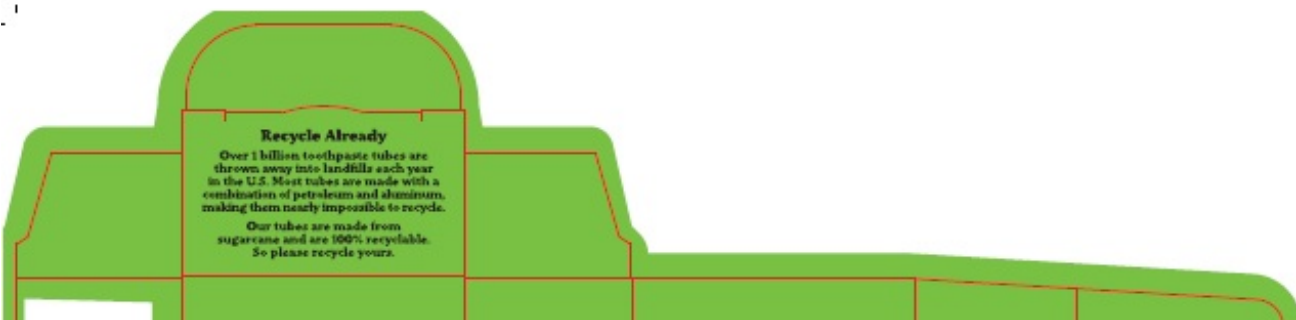
# Fluoride Anticavity Toothpaste

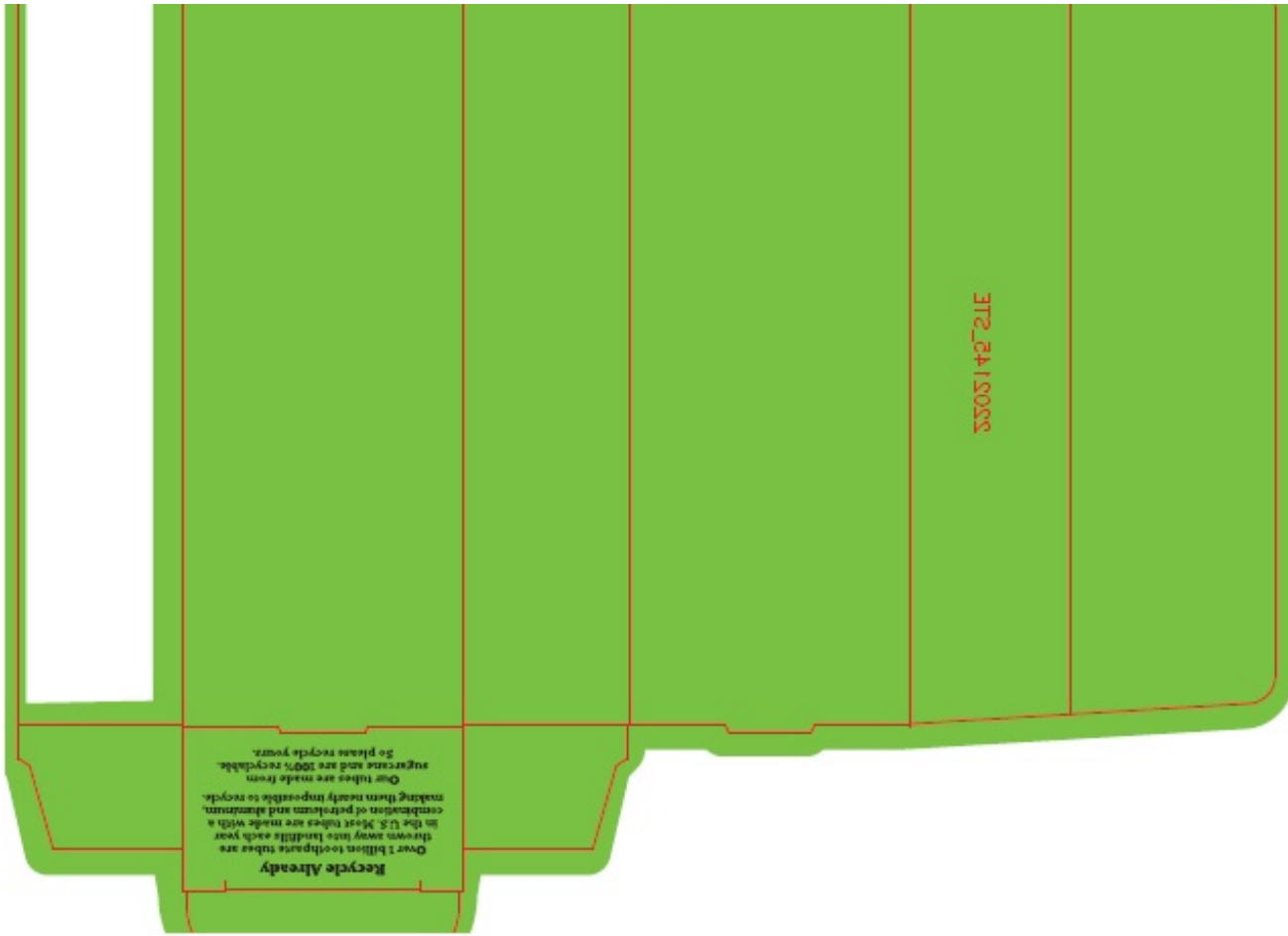
NET WT 4.2 Oz / 120 g

MADE IN THE USA

90 South Dale, Suite 8, Saint Paul,  
Minnesota, USA 55102

## Carton





**Recycle Already**  
Over 1 billion toothpaste tubes are  
thrown away each year.  
In the U.S. Most tubes are made with a  
combination of petroleum and aluminum,  
making them nearly impossible to recycle.  
Our tubes are made from  
sugarcane and are 100% recyclable.  
So please recycle yours.

8805148721E

## Tube

do not place any objects in this area

W

# Made By Dentists™

## Made By Dentists™



Vegan Friendly



Cruelty Free



Recycle Me

**Active ingredient:** Sodium Fluoride 0.24% ..... **Purpose:** Anticavity

**Use:** Aids in the prevention of dental decay.

**Warnings:** Keep out of reach of children under 6 years of age. If more than used for brushing is accidentally swallowed, get medical help or contact a Poison Control Center right away.

**Directions:**  
• Adults and children 2 years of age and older: Brush teeth thoroughly, preferably after each meal or at least twice a day, or as directed by a dentist or doctor.  
• Instruct children under 6 years of age in good brushing and rinsing habits (to minimize swallowing), and only use a pea size amount. • Supervise children as necessary until capable of using without supervision.  
• Children under 2 years of age: Consult a dentist or doctor.

**Questions or comments?**  
+ 1 (646) 980-6461



**Total Care Toothpaste**  
Fluoride Anticavity

**Fresh Mint**  
Flavor

NET WT 4.2 Oz / 120 g

© Copyright 2021 Spotlight Oral Care Ltd.  
90 South Dale, Suite #8, Saint Paul,  
Minnesota, USA 55102.

res

### MADE BY DENTISTS TOTAL CARE

sodium fluoride paste

#### Product Information

Product Type

HUMAN OTC DRUG

Item Code (Source)

NDC:75065-016

Route of Administration DENTAL

### Active Ingredient/Active Moiety

Ingredient Name	Basis of Strength	Strength
SODIUM FLUORIDE (UNII: 8ZYQ1474W7) (FLUORIDE ION - UNII:Q80VPU4080)	SODIUM FLUORIDE	0.24 g in 100 g

### Inactive Ingredients

Ingredient Name	Strength
CARBOXYMETHYLCELLULOSE SODIUM, UNSPECIFIED (UNII: K679OBS311)	
COCAMIDOPROPYL BETAINE (UNII: 5OCF3O11KX)	
HYDRATED SILICA (UNII: Y6O7T4G8P9)	
SODIUM BICARBONATE (UNII: 8MDF5V39QO)	
SODIUM TRIPOLYPHOSPHATE (UNII: 5HK03SA80J)	
SORBITOL (UNII: 506T60A25R)	
TITANIUM DIOXIDE (UNII: 15FIX9V2JP)	
SACCHARIN SODIUM (UNII: SB8ZUX40TY)	
WATER (UNII: 059QF0KOOR)	

### Product Characteristics

Color		Score	
Shape		Size	
Flavor	MINT	Imprint Code	
Contains			

### Packaging

#	Item Code	Package Description	Marketing Start Date	Marketing End Date
1	NDC:75065-016-06	1 in 1 CARTON	07/15/2022	
1		120 g in 1 TUBE; Type 0: Not a Combination Product		

### Marketing Information

Marketing Category	Application Number or Monograph Citation	Marketing Start Date	Marketing End Date
OTC monograph final	part355	07/15/2022	

**Labeler** - Oral Spotlight Care Inc (117405870)

**Registrant** - Oral Spotlight Care Inc (117405870)

