

**LUSTIME ANGEL- pyridoxine, niacin, cyanocobalamin, and vitamin a capsule**  
**SAMSON PHARMACEUTICAL**

-----  
**Lustime Angel**

**Supplement Facts**

**Serving Size: 1 capsule - 500mg**

	<b>Amount Per Serving</b>	<b>% DV</b>
Lustime Blend	500mg	
Epimidium		*
Yohimbe Bark PE.		*
Pueraria Mirifica		*
Vitamin B12	500%	
Vitamin B6	2500%	
Vitamin B3	250%	
Vitamin A	275%	

\* % Daily value not established.

**Other Ingredients:**

Gelatin Capsule, Rice Powder, Titanium Dioxide, FD&C Red No.3, FD&C Blue No.1

**Directions**

Take 1 capsule 60-180 minutes prior to sexual activity. Do not take with food, it works best when taken in between meals, or at least one hour after eating.

**Warning**

Consult with a physician to determine if this product is safe for you to use or not. This product contains herbs, powders and extracts that can have an effect on your health. Do not take this product if you are taking any drug, alcohol, caffeine or any ingredient that increases energy or affects blood pressure higher or lower. This product is not intended to cure any disease or condition. Do not take if you have any heart issues, high blood pressure, liver issues, or any condition you are being treated for. Consult with your physician before you take this product or any sexual enhancement product.

Keep out of reach of children.

**Caution**

Do not take more than one capsule per 24 hour period. Do not take if you are pregnant or breastfeeding.

These statements have not been evaluated by the Food and Drug Administration. This product is not intended to diagnose, treat, cure, or prevent any diseases.

Effects are normally active only when physically stimulated.

NOT INTENDED FOR USE  
BY PERSONS UNDER  
THE AGE OF 18

**PRINCIPAL DISPLAY PANEL - 500 mg Capsule Blister Pack**

LUSTIME™

Angel™

Women Libido Enhancer

FDA

REGISTERED

Dietary Supplement

GUARANTEED

100%

PREMIUM

QUALITY

NET WT 500 mg

Intense Sexual Desire

LUSTIME™

# Angel™



## Women Libido Enhancer



Dietary Supplement



NET WT 500 mg

## Intense Sexual Desire

[www.samsonstore.com](http://www.samsonstore.com)

Commerce, CA 90040  
(877) 888-8460

**Samson**  
Pharmaceuticals Inc.

NOT INTENDED FOR USE  
BY PERSONS UNDER  
THE AGE OF 18

Manufactured by:

LST 1004

Effects are normally active only when physically stimulated.

# Angel™



## Supplement Facts

Serving Size: 1 capsule - 500mg

Amount Per Serving	% DV
Lustime Blend	500mg
Epimidium	*
Yohimbe Bark PE.	*
Pueraria Mirifica	*
Vitamin B12	500%
Vitamin B6	2500%
Vitamin B3	250%
Vitamin A	275%

\*% Daily value not established.

### Other Ingredients:

Gelatin Capsule, Rice Powder, Titanium Dioxide, FD&C Red No.3, FD&C Blue No.1



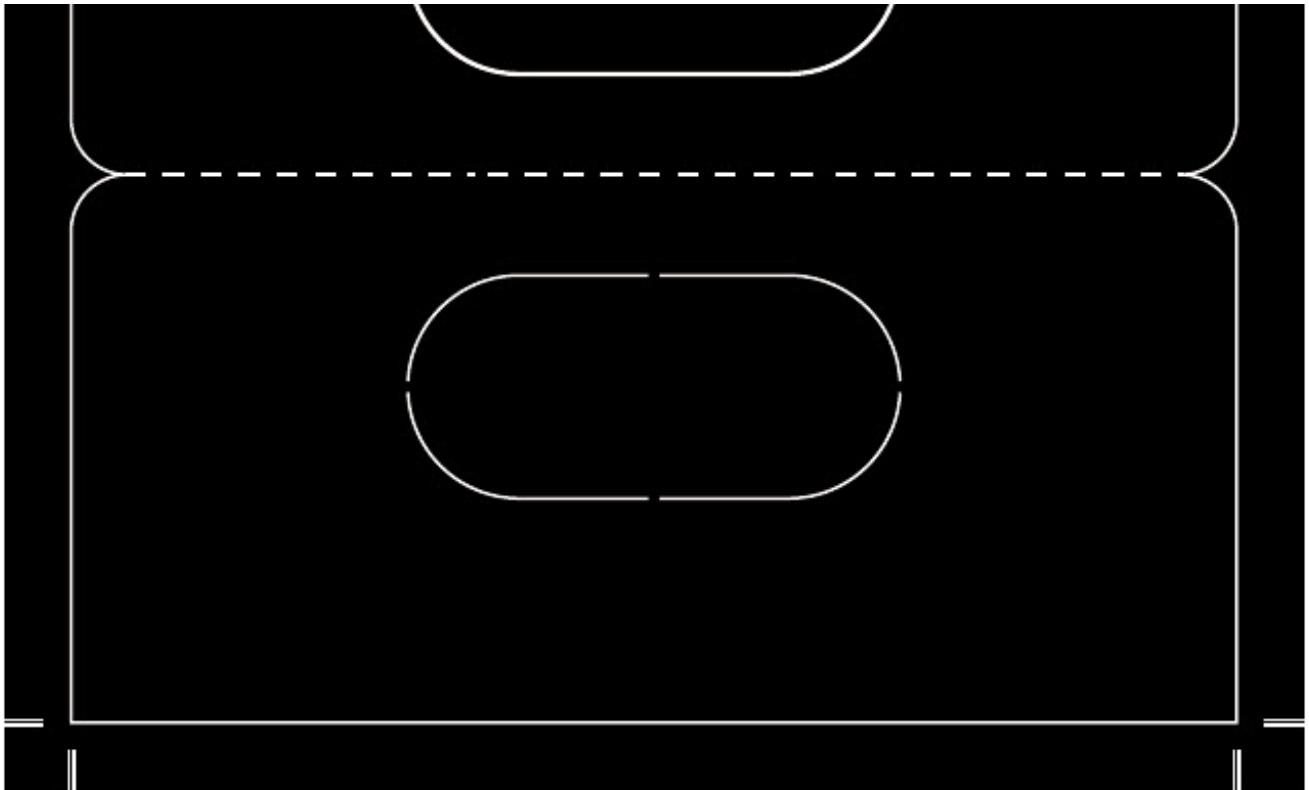
**Directions:** Take 1 capsule 60-180 minutes prior to sexual activity. Do not take with food, it works best when taken in between meals, or at least one hour after eating.

**Warning:** Consult with a physician to determine if this product is safe for you to use or not. This product contains herbs, powders and extracts that can have an effect on your health. Do not take this product if you are taking any drug, alcohol, caffeine or any ingredient that increases energy or affects blood pressure higher or lower. This product is not intended to cure any disease or condition. Do not take if you have any heart issues, high blood pressure, liver issues, or any condition you are being treated for. Consult with your physician before you take this product or any sexual enhancement product.

**Keep out of reach of children.**

**Caution:** Do not take more than one capsule per 24 hour period. Do not take if you are pregnant or breastfeeding.

These statements have not been evaluated by the Food and Drug Administration. This product is not intended to diagnose, treat, cure, or prevent any diseases.



## LUSTIME ANGEL

pyridoxine, niacin, cyanocobalamin, and vitamin a capsule

### Product Information

<b>Product Type</b>	DIETARY SUPPLEMENT	<b>Item Code (Source)</b>	NHRIC:20146-1022
<b>Route of Administration</b>	ORAL		

### Active Ingredient/Active Moiety

Ingredient Name	Basis of Strength	Strength
<b>PYRIDOXINE</b> (UNII: KV2JZ1B16Z) (PYRIDOXINE - UNII:KV2JZ1B16Z)	PYRIDOXINE	50 mg
<b>NIACIN</b> (UNII: 2679MF687A) (NIACIN - UNII:2679MF687A)	NIACIN	50 mg
<b>CYANOCOBALAMIN</b> (UNII: P6YC3EG204) (CYANOCOBALAMIN - UNII:P6YC3EG204)	CYANOCOBALAMIN	0.03 mg
<b>Vitamin A</b> (UNII: 81G40H8B0T) (Vitamin A - UNII:81G40H8B0T)	Vitamin A	50 mg

### Inactive Ingredients

Ingredient Name	Strength
<b>PUERARIA CANDOLLEI VAR. MIRIFICA ROOT</b> (UNII: 892O4599HF)	
<b>EPIMEDIUM WUSHANENSE WHOLE</b> (UNII: 4CNL65E04H)	
<b>Yohimbine</b> (UNII: 2Y49VWD90Q)	
<b>White Rice</b> (UNII: A195V20H7A)	

### Packaging

#	Item Code	Package Description	Marketing Start Date	Marketing End Date
---	-----------	---------------------	----------------------	--------------------



1	NHRIC:20146-1022-1	1 in 1 BLISTER PACK		
<b>Marketing Information</b>				
<b>Marketing Category</b>	<b>Application Number or Monograph Citation</b>	<b>Marketing Start Date</b>	<b>Marketing End Date</b>	
DIETARY SUPPLEMENT		02/01/2020		

<b>Supplement Facts</b>	
<b>Serving Size :</b>	<b>Serving per Container :</b>
<b>Amount Per Serving</b>	<b>% Daily Value</b>
color	
scoring	1
shape	
size (solid drugs)	21 mm

**Labeler** - SAMSON PHARMACEUTICAL (088169581)

<b>Establishment</b>			
<b>Name</b>	<b>Address</b>	<b>ID/FEI</b>	<b>Business Operations</b>
SAMSON PHARMACEUTICAL		088169581	MANUFACTURE

Revised: 2/2020

SAMSON PHARMACEUTICAL