

LIVALO- pitavastatin calcium tablet, film coated

Kowa Pharmaceuticals America, Inc.

HIGHLIGHTS OF PRESCRIBING INFORMATION

These highlights do not include all the information needed to use LIVALO® safely and effectively. See full prescribing information for LIVALO.

LIVALO (pitavastatin) tablets, for oral use
Initial U.S. Approval: 2009

RECENT MAJOR CHANGES

Contraindications, Pregnancy and Lactation (4)	Removed 11/2022
Warnings and Precautions, Immune-Mediated Necrotizing Myopathy (5.2)	11/2022

INDICATIONS AND USAGE

LIVALO is a HMG-CoA reductase inhibitor (statin) indicated as an adjunct to diet to reduce low-density lipoprotein cholesterol (LDL-C) in: (1)

- Adults with primary hyperlipidemia.
- Adults and pediatric patients aged 8 years and older with heterozygous familial hypercholesterolemia (HeFH).

DOSAGE AND ADMINISTRATION

- Take orally once daily with or without food at the same time each day. (2.1)
- For patients requiring a high-intensity statin or are unable to achieve their LDL-C goal receiving LIVALO 4 mg daily, prescribe alternative LDL-C-lowering treatment. (2.1)
- Assess LDL-C when clinically appropriate, as early as 4 weeks after initiation of LIVALO, and adjust the dosage if necessary. (2.1)
- Recommended dosage is 2 mg to 4 mg once daily. Maximum recommended dosage is 4 mg once daily. (2.2)
- Recommended starting dosage for patients with moderate and severe renal impairment and end-stage renal disease on hemodialysis is 1 mg once daily. Maximum recommended dosage is 2 mg once daily. (2.3)
- See full prescribing information for LIVALO dosage modifications due to drug interactions. (2.4)

DOSAGE FORMS AND STRENGTHS

Tablets: 1 mg, 2 mg, and 4 mg (3)

CONTRAINDICATIONS

- Cyclosporine (4, 7)
- Active liver failure or decompensated cirrhosis (4, 5.3)
- Hypersensitivity to pitavastatin or any excipients in LIVALO (4)

WARNINGS AND PRECAUTIONS

- *Myopathy and Rhabdomyolysis*: Risk factors include age 65 or greater, uncontrolled hypothyroidism, renal impairment, concomitant use with certain other drugs, and higher LIVALO dosage. Discontinue LIVALO if markedly elevated CK levels occur or myopathy is diagnosed or suspected. Temporarily discontinue LIVALO in patients experiencing an acute or serious condition at high risk of developing renal failure secondary to rhabdomyolysis. Inform patients of the risk of myopathy and rhabdomyolysis when starting or increasing the LIVALO dosage. Instruct patients to promptly report unexplained muscle pain, tenderness or weakness particularly if accompanied by malaise or fever. (5.1, 7, 8.5, 8.6)
- *Immune-Mediated Necrotizing Myopathy (IMNM)*: Rare reports of IMNM, an autoimmune myopathy, have been reported. Discontinue LIVALO if IMNM is suspected. (5.2)
- *Hepatic Dysfunction*: Increases in serum transaminases have occurred, some persistent. Rare reports of fatal and non-fatal hepatic failure have occurred. Consider testing liver enzymes before initiating therapy and as clinically indicated thereafter. If serious hepatic injury with clinical symptoms and/or hyperbilirubinemia or jaundice occurs, promptly discontinue LIVALO. (5.3)

-----**ADVERSE REACTIONS**-----

The most frequent adverse reactions (rate \geq 2%) were myalgia, constipation, , diarrhea, back pain, and pain in extremity. (6)

To report SUSPECTED ADVERSE REACTIONS, contact Kowa Pharmaceuticals America, Inc. at 1-877-334-3464 or FDA at 1-800-FDA-1088 or www.fda.gov/medwatch.

-----**DRUG INTERACTIONS**-----

See full prescribing information for details regarding concomitant use of LIVALO with other drugs that increase the risk of myopathy and rhabdomyolysis. (2.4, 7)

-----**USE IN SPECIFIC POPULATIONS**-----

- *Pregnancy*: May cause fetal harm. (8.1)
- *Lactation*: Breastfeeding not recommended during treatment with LIVALO. (8.2)

See 17 for PATIENT COUNSELING INFORMATION.

Revised: 1/2024

FULL PRESCRIBING INFORMATION: CONTENTS*

1 INDICATIONS AND USAGE

2 DOSAGE AND ADMINISTRATION

- 2.1 Important Dosage and Administration Information
- 2.2 Recommended Dosage for Adults and Pediatric Patients Aged 8 Years and Older
- 2.3 Recommended Dosage in Patients with Renal Impairment
- 2.4 Dosage Modifications Due to Drug Interactions

3 DOSAGE FORMS AND STRENGTHS

4 CONTRAINDICATIONS

5 WARNINGS AND PRECAUTIONS

- 5.1 Myopathy and Rhabdomyolysis
- 5.2 Immune-Mediated Necrotizing Myopathy
- 5.3 Hepatic Dysfunction
- 5.4 Increases in HbA1c and Fasting Serum Glucose Levels

6 ADVERSE REACTIONS

- 6.1 Clinical Studies Experience
- 6.2 Postmarketing Experience

7 DRUG INTERACTIONS

8 USE IN SPECIFIC POPULATIONS

- 8.1 Pregnancy
- 8.2 Lactation
- 8.4 Pediatric Use
- 8.5 Geriatric Use
- 8.6 Renal Impairment
- 8.7 Hepatic Impairment

10 OVERDOSAGE

11 DESCRIPTION

12 CLINICAL PHARMACOLOGY

- 12.1 Mechanism of Action
- 12.2 Pharmacodynamics
- 12.3 Pharmacokinetics

13 NONCLINICAL TOXICOLOGY

- 13.1 Carcinogenesis, Mutagenesis, Impairment of Fertility

14 CLINICAL STUDIES

16 HOW SUPPLIED/STORAGE AND HANDLING

17 PATIENT COUNSELING INFORMATION

* Sections or subsections omitted from the full prescribing information are not listed.

FULL PRESCRIBING INFORMATION

1 INDICATIONS AND USAGE

LIVALO is indicated as an adjunct to diet to reduce low-density lipoprotein cholesterol (LDL-C) in:

- Adults with primary hyperlipidemia.
- Adults and pediatric patients aged 8 years and older with heterozygous familial hypercholesterolemia (HeFH).

2 DOSAGE AND ADMINISTRATION

2.1 Important Dosage and Administration Information

- Take LIVALO orally once daily with or without food at the same time each day.
- For patients that require a high-intensity statin or are unable to achieve their LDL-C goal receiving LIVALO 4 mg daily, prescribe alternative LDL-C-lowering treatment.
- Assess LDL-C when clinically appropriate, as early as 4 weeks after initiating LIVALO, and adjust the dosage if necessary.

2.2 Recommended Dosage for Adults and Pediatric Patients Aged 8 Years and Older

- The recommended dosage range of LIVALO is 2 mg to 4 mg daily.
- The maximum recommended dosage is LIVALO 4 mg once daily .

2.3 Recommended Dosage in Patients with Renal Impairment

- The recommended starting dosage for patients with moderate and severe renal impairment (estimated glomerular filtration rate 30 - 59 mL/minute/1.73 m² and 15 - 29 mL/minute/1.73 m², respectively) and patients with end-stage renal disease receiving hemodialysis is LIVALO 1 mg once daily. The maximum recommended dose for these patients is LIVALO 2 mg once daily [*see Use in Specific Populations (8.5)*].
- There are no dosage adjustment recommendations for patients with mild renal impairment.

2.4 Dosage Modifications Due to Drug Interactions

- In patients taking erythromycin, do not exceed LIVALO 1 mg once daily [*see Drug Interactions (7)*].
- In patients taking rifampin, do not exceed LIVALO 2 mg once daily [*see Drug Interactions (7)*].

3 DOSAGE FORMS AND STRENGTHS

Tablets:

- 1 mg: Round white tablet, debossed "KC" on one side and "1" on the other side.
- 2 mg: Round white tablet, debossed "KC" on one side and "2" on the other side.
- 4 mg: Round white tablet, debossed "KC" on one side and "4" on the other side.

4 CONTRAINDICATIONS

LIVALO is contraindicated in the following conditions:

- Concomitant use of cyclosporine [*see Drug Interactions (7)*].
- Acute liver failure or decompensated cirrhosis [*see Warnings and Precautions (5.3)*].
- Hypersensitivity to pitavastatin or any excipients in LIVALO. Hypersensitivity reactions including angioedema, rash, pruritus, and urticaria have been reported with LIVALO [*see Adverse Reactions (6)*].

5 WARNINGS AND PRECAUTIONS

5.1 Myopathy and Rhabdomyolysis

LIVALO may cause myopathy (muscle pain, tenderness, or weakness associated with elevated creatine kinase [CK]) and rhabdomyolysis. Acute kidney injury secondary to myoglobinuria and rare fatalities have occurred as a result of rhabdomyolysis in patients treated with statins, including LIVALO.

Risk Factors for Myopathy

Risk factors for myopathy include age 65 years or greater, uncontrolled hypothyroidism, renal impairment, concomitant use of certain drugs (including other lipid-lowering therapies), and higher LIVALO dosage [*see Dosage and Administration (2.2), Drug Interactions (7), and Use in Specific Populations (8.5, 8.6)*]. Dosages of LIVALO greater than 4 mg once daily were associated with an increased risk for severe myopathy in premarketing clinical studies. The maximum recommended dose of LIVALO is 4 mg once daily.

Steps to Prevent or Reduce the Risk of Myopathy and Rhabdomyolysis

LIVALO is contraindicated in patients taking cyclosporine and not recommended in patients taking gemfibrozil [*see Contraindications (4) and Drug Interactions (7)*]. There are LIVALO dosage restrictions for patients taking erythromycin or rifampin [*see Dosage and Administration (2.4)*]. The following drugs when used concomitantly with LIVALO may also increase the risk of myopathy and rhabdomyolysis: lipid-modifying dosages of niacin (>1grams/day), fibrates, and colchicine [*see Drug Interactions (7)*].

Discontinue LIVALO if markedly elevated CK levels occur or if myopathy is either diagnosed or suspected. Muscle symptoms and CK elevations may resolve if LIVALO is discontinued. Temporarily discontinue LIVALO in patients experiencing an acute or serious condition at high risk of developing renal failure secondary to rhabdomyolysis (e.g., sepsis; shock; severe hypovolemia; major surgery; trauma; severe metabolic, endocrine, or electrolyte disorders; or uncontrolled epilepsy).

Inform patients of the risk of myopathy and rhabdomyolysis when starting or increasing

the LIVALO dosage. Instruct patients to promptly report any unexplained muscle pain, tenderness or weakness, particularly if accompanied by malaise or fever.

5.2 Immune-Mediated Necrotizing Myopathy

There have been rare reports of immune-mediated necrotizing myopathy (IMNM), an autoimmune myopathy, associated with statin use, including reports of recurrence when the same or a different statin was administered. IMNM is characterized by proximal muscle weakness and elevated serum creatine kinase that persist despite discontinuation of statin treatment; positive anti-HMG CoA reductase antibody; muscle biopsy showing necrotizing myopathy; and improvement with immunosuppressive agents. Additional neuromuscular and serologic testing may be necessary. Treatment with immunosuppressive agents may be required. Discontinue LIVALO if IMNM is suspected.

5.3 Hepatic Dysfunction

Increases in serum transaminases have been reported with LIVALO [see *Adverse Reactions (6)*]. In most cases, these changes appeared soon after initiation, were transient, were not accompanied by symptoms, and resolved or improved on continued therapy or after a brief interruption in therapy. There have been rare postmarketing reports of fatal and non-fatal hepatic failure in patients taking statins, including LIVALO.

Patients who consume substantial quantities of alcohol and/or have a history of liver disease may be at increased risk for hepatic injury.

Consider liver enzyme testing before the initiation of LIVALO and when clinically indicated thereafter. LIVALO is contraindicated in patients with acute liver failure or decompensated cirrhosis [see *Contraindications (4)*]. If serious hepatic injury with clinical symptoms and/or hyperbilirubinemia or jaundice occurs, promptly discontinue LIVALO.

5.4 Increases in HbA1c and Fasting Serum Glucose Levels

Increases in HbA1c and fasting serum glucose levels have been reported with statins, including LIVALO. Optimize lifestyle measures, including regular exercise, maintaining a healthy body weight, and making healthy food choices.

6 ADVERSE REACTIONS

The following serious adverse reactions are discussed in other sections of the labeling:

- Myopathy and Rhabdomyolysis [see *Warnings and Precautions (5.1)*]
- Immune-Mediated Necrotizing Myopathy [see *Warning and Precautions (5.2)*]
- Hepatic Dysfunction [see *Warning and Precautions (5.3)*]
- Increases in HbA1c and Fasting Serum Glucose Levels [see *Warning and Precautions (5.4)*].

6.1 Clinical Studies Experience

Because clinical studies are conducted under widely varying conditions, adverse reaction rates observed in the clinical studies of one drug cannot be directly compared to rates in the clinical studies of another drug and may not reflect the rates observed in practice.

Adverse Reactions in Adults with Primary Hyperlipidemia

In 10 controlled clinical studies and 4 subsequent open-label extension studies, 3,291 adult patients with primary hyperlipidemia were administered LIVALO 1 mg to 4 mg daily. The mean continuous exposure of pitavastatin (1 mg to 4 mg) was 36.7 weeks (median 51.1 weeks). The mean age of the patients was 60.9 years (range; 18 years – 89 years) and 52% were females. Approximately 93% of the patients were White, 7% were Asian/Indian, 0.2% were African American and 0.3% were Hispanic and other.

In controlled clinical studies and their open-label extensions, 3.9% (1 mg), 3.3% (2 mg), and 3.7% (4 mg) of LIVALO-treated patients were discontinued due to adverse reactions. The most common adverse reactions that led to treatment discontinuation were: elevated creatine phosphokinase (0.6% on 4 mg) and myalgia (0.5% on 4 mg).

Adverse reactions reported in $\geq 2\%$ of patients in controlled clinical studies and at a rate greater than or equal to placebo are shown in Table 1. These studies had treatment duration of up to 12 weeks.

Table 1. Adverse Reactions ($\geq 2\%$ and \geq placebo) in Adults with Primary Hyperlipidemia in Studies up to 12 Weeks

Adverse Reactions	Placebo (n= 208) %	LIVALO 1 mg (n=309) %	LIVALO 2 mg (n=951) %	LIVALO 4 mg (n=1540) %
Myalgia	1.4	1.9	2.8	3.1
Constipation	1.9	3.6	1.5	2.2
Diarrhea	1.9	2.6	1.5	1.9
Back pain	2.9	3.9	1.8	1.4
Pain in extremity	1.9	2.3	0.6	0.9

Other adverse reactions reported from clinical studies were arthralgia, headache, influenza, and nasopharyngitis.

Hypersensitivity reactions including rash, pruritus, and urticaria have been reported with LIVALO.

The following laboratory abnormalities have been reported: elevated creatine phosphokinase, transaminases, alkaline phosphatase, bilirubin, and glucose.

Adverse Reactions in Adult HIV-Infected Patients with Dyslipidemia

In a double-blind, randomized, controlled, 52-week trial, 252 HIV-infected patients with dyslipidemia were treated with either LIVALO 4 mg once daily (n=126) or another statin (n=126). All patients were taking antiretroviral therapy (excluding darunavir) and had HIV-1 RNA less than 200 copies/mL and CD4 count greater than 200 cell/ μ L for at least 3 months prior to randomization. The safety profile of LIVALO was generally consistent with that observed in the clinical trials described above. One patient (0.8%) treated with LIVALO had a peak creatine phosphokinase value exceeding 10 times the upper limit of normal (ULN), which resolved spontaneously. Four patients (3%) treated with LIVALO had at least one ALT value exceeding 3 times but less than 5 times the ULN, none of which led to drug discontinuation. Virologic failure was reported for four patients (3%) treated with LIVALO, defined as a confirmed measurement of HIV-1 RNA exceeding 200

copies/mL that was also more than a 2-fold increase from baseline.

Adverse Reactions in Pediatric Patients Aged 8 Years and Older with HeFH

In a 12-week, double-blind, placebo-controlled trial of LIVALO 1 mg, 2 mg, and 4 mg once daily in 82 pediatric patients 8 years to 16 years of age with HeFH and a 52-week open-label trial in 85 pediatric patients with HeFH, the safety profile was similar to that observed in the adult population.

6.2 Postmarketing Experience

The following adverse reactions have been identified during postapproval use of LIVALO. Because these reactions are reported voluntarily from a population of uncertain size, it is not always possible to reliably estimate their frequency or establish a causal relationship to drug exposure.

Gastrointestinal disorders: abdominal discomfort, abdominal pain, dyspepsia, nausea

General disorders: asthenia, fatigue, malaise, dizziness

Hepatobiliary disorders: hepatitis, jaundice, fatal and non-fatal hepatic failure

Immune system disorders: angioedema, immune-mediated necrotizing myopathy associated with statin use

Metabolism and nutrition disorders: increases in HbA1c, fasting serum glucose levels

Musculoskeletal and connective tissue disorders: muscle spasms, myopathy, rhabdomyolysis

Nervous system disorders: hypoesthesia, peripheral neuropathy. There have been rare reports of new onset or exacerbation of myasthenia gravis, including ocular myasthenia, and reports of recurrence when the same or a different statin was administered. Rare reports of cognitive impairment (e.g., memory loss, forgetfulness, amnesia, memory impairment, confusion) associated with statin use. Cognitive impairment was generally nonserious, and reversible upon statin discontinuation, with variable times to symptom onset (1 day to years) and symptom resolution (median of 3 weeks).

Psychiatric disorders: insomnia, depression

Reproductive system and breast disorders: erectile dysfunction

Respiratory, thoracic and mediastinal disorders: interstitial lung disease

Skin and subcutaneous tissue disorders: lichen planus

7 DRUG INTERACTIONS

Table 2 includes a list of drugs that increase the risk of myopathy and rhabdomyolysis when administered concomitantly with LIVALO and instructions for preventing or managing drug interactions [see *Warnings and Precautions (5.1)*, *Clinical Pharmacology (12.3)*].

Table 2: Drug Interactions that Increase the Risk of Myopathy and Rhabdomyolysis with LIVALO

Cyclosporine
<i>Clinical</i> Cyclosporine significantly increases pitavastatin exposure and

<i>Impact:</i>	increases the risk of myopathy and rhabdomyolysis.
<i>Intervention:</i>	Concomitant use of cyclosporine with LIVALO is contraindicated [see <i>Contraindications (4)</i>].
Gemfibrozil	
<i>Clinical Impact:</i>	Gemfibrozil may cause myopathy when given alone. The risk of myopathy and rhabdomyolysis is increased with concomitant use of gemfibrozil with statins, including LIVALO.
<i>Intervention:</i>	Avoid concomitant use of gemfibrozil with LIVALO.
Erythromycin	
<i>Clinical Impact:</i>	Erythromycin significantly increases pitavastatin exposure and increases the risk of myopathy and rhabdomyolysis.
<i>Intervention:</i>	In patients taking erythromycin, do not exceed LIVALO 1 mg once daily [see <i>Dosage and Administration (2.4)</i>].
Rifampin	
<i>Clinical Impact:</i>	Rifampin significantly increases peak pitavastatin exposure and increases the risk of myopathy and rhabdomyolysis.
<i>Intervention:</i>	In patients taking rifampin, do not exceed LIVALO 2 mg once daily [see <i>Dosage and Administration (2.4)</i>].
Fibrates	
<i>Clinical Impact:</i>	Fibrates may cause myopathy when given alone. The risk of myopathy and rhabdomyolysis is increased with concomitant use of fibrates with statins, including LIVALO.
<i>Intervention:</i>	Consider if the benefit of using fibrates concomitantly with LIVALO outweighs the increased risk of myopathy and rhabdomyolysis.
Niacin	
<i>Clinical Impact:</i>	The risk of myopathy and rhabdomyolysis may be increased with concomitant use of lipid-modifying doses (≥ 1 g/day) of niacin with LIVALO.
<i>Intervention:</i>	Consider if the benefit of using lipid-modifying doses (≥ 1 g/day) of niacin concomitantly with LIVALO outweighs the increased risk of myopathy and rhabdomyolysis.
Colchicine	
<i>Clinical Impact:</i>	Cases of myopathy and rhabdomyolysis have been reported with concomitant use of colchicine with statins, including LIVALO.
<i>Intervention:</i>	Consider the risk/benefit of concomitant use of colchicine with LIVALO.

8 USE IN SPECIFIC POPULATIONS

8.1 Pregnancy

Risk Summary

Discontinue LIVALO when pregnancy is recognized. Alternatively, consider the ongoing therapeutic needs of the individual patient.

LIVALO decreases synthesis of cholesterol and possibly other biologically active

substances derived from cholesterol; therefore, LIVALÓ may cause fetal harm when administered to pregnant patients based on the mechanism of action [see *Clinical Pharmacology (12.1)*]. In addition, treatment of hyperlipidemia is not generally necessary during pregnancy. Atherosclerosis is a chronic process and the discontinuation of lipid-lowering drugs during pregnancy should have little impact on the outcome of long-term therapy of primary hyperlipidemia for most patients.

Available data from case series and prospective and retrospective observational cohort studies over decades of use with statins in pregnant women have not identified a drug-associated risk of major congenital malformations. Published data from prospective and retrospective observational cohort studies with statin use in pregnant women are insufficient to determine if there is a drug associated risk of miscarriage (see *Data*).

In animal reproduction studies, no embryo-fetal toxicity or congenital malformations were observed in pregnant rats and rabbits orally administered pitavastatin during the period of organogenesis at doses which were 22 and 4 times, respectively, the human exposure at the maximum recommended human dosage (MRHD) of 4 mg, based on AUC [see *Data*].

The estimated background risk of major birth defects and miscarriage for the indicated population is unknown. Adverse outcomes in pregnancy occur regardless of the health of the mother or the use of medications. In the U.S. general population, the estimated background risk of major birth defects and miscarriage in clinically recognized pregnancies is 2-4% and 15-20%, respectively.

Data

Human Data

A Medicaid cohort linkage study of 1152 statin-exposed pregnant women compared to 886,996 controls did not find a significant teratogenic effect from maternal use of statins in the first trimester of pregnancy, after adjusting for potential confounders – including maternal age, diabetes mellitus, hypertension, obesity, and alcohol and tobacco use – using propensity score-based methods. The relative risk of congenital malformations between the group with statin use and the group with no statin use in the first trimester was 1.07 (95% confidence interval 0.85 to 1.37) after controlling for confounders, particularly pre-existing diabetes mellitus. There were also no statistically significant increases in any of the organ-specific malformations assessed after accounting for confounders. In the majority of pregnancies, statin treatment was initiated prior to pregnancy and was discontinued at some point in the first trimester when pregnancy was identified. Study limitations include reliance on physician coding to define the presence of a malformation, lack of control for certain confounders such as body mass index, use of prescription dispensing as verification for the use of a statin, and lack of information on non-live births.

Animal Data

Embryo-fetal developmental studies were conducted in pregnant rats administered 3, 10, 30 mg/kg/day pitavastatin by oral gavage during organogenesis (gestation days 7-17). No adverse effects were observed at 3 mg/kg/day, systemic exposures 22 times human systemic exposure at 4 mg/day based on AUC.

Embryo-fetal developmental studies were conducted in pregnant rabbits administered 0.1, 0.3, 1 mg/kg/day pitavastatin by oral gavage during the period of fetal

organogenesis (gestation days 6-18). Maternal toxicity consisting of reduced body weight and abortion was observed at all doses tested (4 times human systemic exposure at 4 mg/day based on AUC).

In perinatal/postnatal studies in pregnant rats given oral gavage doses of pitavastatin at 0.1, 0.3, 1, 3, 10, 30 mg/kg/day from organogenesis through weaning (gestation day 17 to lactation day 21), maternal toxicity consisting of mortality at ≥ 0.3 mg/kg/day and impaired lactation at all doses contributed to the decreased survival of neonates in all dose groups (0.1 mg/kg/day represents approximately 1 time human systemic exposure at 4 mg/day dose based on AUC).

Reproductive toxicity studies have shown that pitavastatin crosses the placenta in rats and is found in fetal tissues at $\leq 36\%$ of maternal plasma concentrations following a single dose of 1 mg/kg/day during gestation (at the end of organogenesis).

8.2 Lactation

Risk Summary

There is no available information about the presence of pitavastatin in human or animal milk, the effects of the drug on the breastfed infant, or the effects of the drug on milk production. However, it has been shown that another drug in this class passes into human milk. Statins, including LIVALO, decrease cholesterol synthesis and possibly the synthesis of other biologically active substances derived from cholesterol and may cause harm to the breastfed infant.

Because of the potential for serious adverse reactions in a breastfed infant, based upon the mechanism of action, advise patients that breastfeeding is not recommended during treatment with LIVALO. [see *Use in Specific Populations (8.1), Clinical Pharmacology (12.1)*]

8.4 Pediatric Use

The safety and effectiveness of LIVALO as an adjunctive therapy to diet to reduce elevated LDL-C in pediatric patients aged 8 years and older with HeFH have been established. Use of LIVALO for this indication is supported by a 12-week, double-blind, placebo-controlled trial in 82 pediatric patients 8 to 16 years of age with HeFH [see *Clinical Studies (14.2)*] and a 52-week open-label trial in 85 pediatric patients with HeFH.

The safety and effectiveness of LIVALO have not been established in pediatric patients younger than 8 years of age with HeFH or in pediatric patients with other types of hyperlipidemia (other than HeFH).

8.5 Geriatric Use

In controlled clinical studies, 1,209 (43%) patients were 65 years and older. No overall differences in safety or effectiveness were observed between these patients and younger patients.

Advanced age (≥ 65 years) is a risk factor for LIVALO-associated myopathy and rhabdomyolysis. Dose selection for a geriatric patient should be cautious, recognizing the greater frequency of decreased hepatic, renal, or cardiac function, and of concomitant disease or other drug therapy and the higher risk of myopathy. Monitor geriatric patients receiving LIVALO for the increased risk of myopathy [see *Warnings and*

Precautions (5.1)].

8.6 Renal Impairment

Renal impairment is a risk factor for myopathy and rhabdomyolysis. Monitor all patients with renal impairment for development of myopathy. Due to the risk of myopathy, a dosage modification of LIVALO is recommended for patients with moderate and severe renal impairment (estimated glomerular filtration rate 30 - 59 mL/min/1.73 m² and 15 - 29 mL/min/1.73 m², respectively), as well as end-stage renal disease receiving hemodialysis. [see *Dosage and Administration (2.3)*, *Warnings and Precautions (5.1)*, *Clinical Pharmacology (12.3)*].

8.7 Hepatic Impairment

LIVALO is contraindicated in patients with active liver failure or decompensated cirrhosis [see *Contraindications (4)*, *Warnings and Precautions (5.3)*].

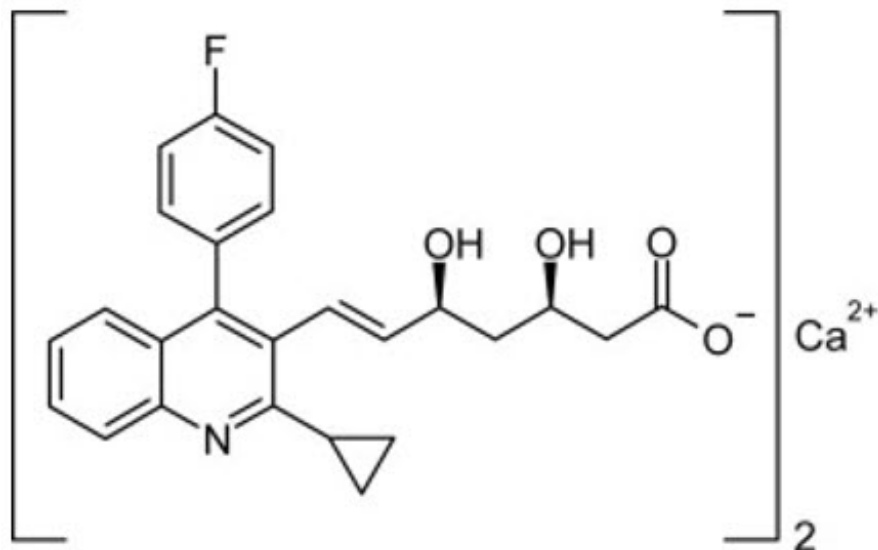
10 OVERDOSAGE

No specific treatment for LIVALO overdose is known. Contact Poison Control (1-800-222-1222) for latest recommendations. Hemodialysis is unlikely to be of benefit due to high protein binding ratio of LIVALO.

11 DESCRIPTION

LIVALO (pitavastatin) tablets for oral use is an HMG-CoA reductase inhibitor.

The chemical name for pitavastatin is (+)monocalcium *bis*{(3R, 5S, 6E)-7-[2-cyclopropyl-4-(4-fluorophenyl)-3-quinoly]-3,5-dihydroxy-6-heptenoate}. The structural formula is:



The empirical formula for pitavastatin is C₅₀H₄₆CaF₂N₂O₈ and the molecular weight is 880.98. Pitavastatin is odorless and occurs as white to pale-yellow powder. It is freely soluble in pyridine, chloroform, dilute hydrochloric acid, and tetrahydrofuran, soluble in

ethylene glycol, sparingly soluble in octanol, slightly soluble in methanol, very slightly soluble in water or ethanol, and practically insoluble in acetonitrile or diethyl ether.

Pitavastatin is hygroscopic and slightly unstable in light.

Each film-coated tablet of LIVALO contains 1 mg, 2 mg, or 4 mg of pitavastatin, which is equivalent to 1.045 mg, 2.09 mg, or 4.18 mg, respectively, of pitavastatin calcium and the following inactive ingredients: hypromellose, lactose monohydrate, low substituted hydroxypropylcellulose, magnesium aluminometasilicate, and magnesium stearate. The film coating contains the following inactive ingredients: colloidal anhydrous silica, hypromellose, titanium dioxide, and triethyl citrate.

12 CLINICAL PHARMACOLOGY

12.1 Mechanism of Action

Pitavastatin is an inhibitor of 3-hydroxy-3-methylglutaryl-coenzyme A (HMG-CoA) reductase, the enzyme that catalyzes the conversion of HMG-CoA to mevalonate, a rate-limiting step in the biosynthetic pathway for cholesterol. As a result, the expression of LDL-receptors followed by the uptake of LDL from blood to liver is accelerated and then the plasma TC decreases. Sustained inhibition of cholesterol synthesis in the liver also decreases levels of very low density lipoproteins.

12.2 Pharmacodynamics

Cardiac Electrophysiology

In a randomized, double-blind, placebo-controlled, 4-way parallel, active-comparator study with moxifloxacin in 174 healthy participants, LIVALO was not associated with clinically meaningful prolongation of the QTc interval or heart rate at daily doses up to 16 mg (4 times the recommended maximum dose of 4 mg daily).

12.3 Pharmacokinetics

Absorption

Pitavastatin peak plasma concentrations are achieved about 1 hour after oral administration. Both C_{max} and AUC_{0-inf} increased in an approximately dose-proportional manner for single LIVALO doses from 1 mg to 24 mg once daily. The absolute bioavailability of pitavastatin oral solution is 51%. The C_{max} and AUC of pitavastatin did not differ following evening or morning drug administration. In healthy volunteers receiving 4 mg pitavastatin, the percent change from baseline for LDL-C following evening dosing was slightly greater than that following morning dosing. Pitavastatin was absorbed in the small intestine but very little in the colon.

Effect of Food

Administration of LIVALO with a high fat meal (50% fat content) decreases pitavastatin C_{max} by 43% but does not significantly reduce pitavastatin AUC.

Distribution

Pitavastatin is more than 99% protein bound in human plasma, mainly to albumin and alpha 1-acid glycoprotein, and the mean volume of distribution is approximately 148 L.

Elimination

Metabolism

The principal route of pitavastatin metabolism is glucuronidation via liver uridine 5'-diphosphate glucuronosyltransferase (UGT) with subsequent formation of pitavastatin lactone. There is only minimal metabolism by the cytochrome P450 system. Pitavastatin is marginally metabolized by CYP2C9 and to a lesser extent by CYP2C8. The major metabolite in human plasma is the lactone, which is formed via an ester-type pitavastatin glucuronide conjugate by UGTs (UGT1A3 and UGT2B7).

Excretion

A mean of 15% of radioactivity of orally administered, single 32 mg ¹⁴C-labeled pitavastatin dose was excreted in urine, whereas a mean of 79% of the dose was excreted in feces within 7 days. The mean plasma elimination half-life is approximately 12 hours.

Specific Populations

Geriatric Patients

In a pharmacokinetic study which compared healthy young and geriatric (≥65 years) volunteers, pitavastatin C_{max} and AUC were 10 and 30% higher, respectively, in the geriatric patients [see *Use in Specific Populations (8.4)*]

Pediatric Patients

A 12-week study in pediatric patients 8 to 16 years of age treated with pitavastatin 1 mg, 2 mg and 4 mg administered once daily, showed a dose-dependent increase in pitavastatin plasma concentrations at trough (for 2 mg and 4 mg doses) and 1 hour post dose. A dose-dependent increase in pitavastatin lactone plasma concentrations was observed at trough and 1 hour post dose.

Male and Female Patients

In a pharmacokinetic study, which compared healthy male and female volunteers, pitavastatin C_{max} and AUC were 60 and 54% higher, respectively in females.

Racial or Ethnic Groups

In pharmacokinetic studies pitavastatin C_{max} and AUC were 21 and 5% lower, respectively in Black or African American healthy volunteers compared with those of White healthy volunteers. In pharmacokinetic comparison between White volunteers and Japanese volunteers, there were no significant differences in C_{max} and AUC.

Patients with Renal Impairment

In patients with moderate renal impairment (estimated glomerular filtration rate of 30 – 59 mL/min/1.73 m²) and end stage renal disease receiving hemodialysis, pitavastatin AUC_{0-inf} is 102% and 86% higher than those of healthy volunteers, respectively, while pitavastatin C_{max} is 60% and 40% higher than those of healthy volunteers, respectively. Patients received hemodialysis immediately before pitavastatin dosing and did not undergo hemodialysis during the pharmacokinetic study. Hemodialysis patients have 33% and 36% increases in the mean unbound fraction of pitavastatin as compared to healthy volunteers and patients with moderate renal impairment, respectively [see *Use in Specific Populations (8.5)*].

In another pharmacokinetic study, patients with severe renal impairment (estimated glomerular filtration rate 15 – 29 mL/min/1.73 m²) not receiving hemodialysis were administered a single dose of LIVALO 4 mg. The AUC_{0-inf} and the C_{max} were 36% and 18% higher, respectively, compared with those of healthy volunteers. For both patients with severe renal impairment and healthy volunteers, the mean percentage of protein-unbound pitavastatin was approximately 0.6% [see *Use in Specific Populations (8.5)*].

The effect of mild renal impairment on pitavastatin exposure has not been studied.

Patients with Hepatic Impairment

The disposition of pitavastatin was compared in healthy volunteers and patients with various degrees of hepatic impairment. Pitavastatin C_{max} and AUC_{inf} in patients with moderate hepatic impairment (Child-Pugh B disease) was 2.7-fold and 3.8-fold higher, respectively as compared to healthy volunteers. In patients with mild hepatic impairment (Child-Pugh A disease), pitavastatin C_{max} and AUC_{inf} were 30% and 60% higher as compared to healthy volunteers. Mean pitavastatin half-life for moderate hepatic impairment, mild hepatic impairment, and healthy volunteers were 15, 10, and 8 hours, respectively [see *Contraindications (4), Warnings and Precautions (5.3)*].

Drug Interaction Studies

Warfarin

The steady-state pharmacodynamics (international normalized ratio [INR] and prothrombin time [PT]) and pharmacokinetics of warfarin in healthy volunteers were unaffected by the coadministration of LIVALO 4 mg daily.

Table 3 presents the effect of coadministered drugs on pitavastatin systemic exposure:

Table 3. Effect of Coadministered Drugs on Pitavastatin Systemic Exposure

Coadministered drug	Dosage regimen	Change in AUC*	Change in C_{max}*
Cyclosporine	Pitavastatin 2 mg QD for 6 days + cyclosporine 2 mg/kg on Day 6	↑ 4.6 fold †	↑ 6.6 fold †
Erythromycin	Pitavastatin 4 mg single dose on Day 4 + erythromycin 500 mg 4 times daily for 6 days	↑ 2.8 fold †	↑ 3.6 fold †
Rifampin	Pitavastatin 4 mg QD + rifampin 600 mg QD for 5 days	↑ 29%	↑ 2.0 fold †
Atazanavir	Pitavastatin 4 mg QD + atazanavir 300 mg daily for 5 days	↑ 31%	↑ 60%
Darunavir/Ritonavir	Pitavastatin 4mg QD on Days 1-5 and 12-16 + darunavir/ritonavir 800mg/100 mg QD on Days 6-16	↓ 26%	↓ 4%
	Pitavastatin 4 mg QD on Days		

Lopinavir/Ritonavir	1-5 and 20-24 + lopinavir/ritonavir 400 mg/100 mg BID on Days 9 - 24	↓ 20%	↓ 4 %
Gemfibrozil	Pitavastatin 4 mg QD + gemfibrozil 600 mg BID for 7 days	↑ 45%	↑ 31%
Fenofibrate	Pitavastatin 4 mg QD + fenofibrate 160 mg QD for 7 days	↑ 18%	↑ 11%
Ezetimibe	Pitavastatin 2 mg QD + ezetimibe 10 mg for 7 days	↓ 2%	↓ 0.2%
Enalapril	Pitavastatin 4 mg QD + enalapril 20 mg daily for 5 days	↑ 6%	↓ 7%
Digoxin	Pitavastatin 4 mg QD + digoxin 0.25 mg for 7 days	↑ 4%	↓ 9%
Diltiazem LA	Pitavastatin 4 mg QD on Days 1-5 and 11-15 and diltiazem LA 240 mg on Days 6-15	↑ 10%	↑ 15%
Grapefruit Juice	Pitavastatin 2 mg single dose on Day 3 + grapefruit juice for 4 days	↑ 15%	↓ 12%
Itraconazole	Pitavastatin 4 mg single dose on Day 4 + itraconazole 200 mg daily for 5 days	↓ 23%	↓ 22%

BID = twice daily; QD = once daily; LA = Long Acting

* Data presented as x-fold change represent the ratio between coadministration and pitavastatin alone (i.e., 1-fold = no change). Data presented as % change represent % difference relative to pitavastatin alone (i.e., 0% = no change).

† Considered clinically significant [see *Dosage and Administration (2.4), Drug Interactions (7)*]

Table 4 presents the effect of pitavastatin coadministration on systemic exposure of other drugs:

Table 4. Effect of Pitavastatin Coadministration on Systemic Exposure to Other Drugs

Coadministered drug	Dosage regimen	Change in AUC*	Change in C _{max} *
Atazanavir	Pitavastatin 4 mg QD + atazanavir 300 mg daily for 5 days	↑ 6%	↑ 13%
Darunavir	Pitavastatin 4mg QD on Days 1-5 and 12-16 + darunavir/ritonavir 800mg/100 mg QD on Days 6-16	↑ 3%	↑ 6%
Lopinavir	Pitavastatin 4 mg QD on Days 1-5 and 20-24 + lopinavir/ritonavir 400 mg/100 mg BID on Days 9 - 24	↓ 9%	↓ 7%
	Pitavastatin 4 mg QD on Days 1-5		

Ritonavir	and 20-24 + lopinavir/ritonavir 400 mg/100 mg BID on Days 9 - 24		↓ 11%	↓ 11%
Ritonavir	Pitavastatin 4mg QD on Days 1-5 and 12-16 + darunavir/ritonavir 800mg/100 mg QD on Days 6-16		↑ 8%	↑ 2%
Enalapril	Pitavastatin 4 mg QD + enalapril 20 mg daily for 5 days	Enalapril	↑ 12%	↑ 12%
		Enalaprilat	↓ 1%	↓ 1%
Warfarin	Individualized maintenance dose of warfarin (2 - 7 mg) for 8 days + pitavastatin 4 mg QD for 9 days	R-warfarin	↑ 7%	↑ 3%
		S-warfarin	↑ 6%	↑ 3%
Ezetimibe	Pitavastatin 2 mg QD + ezetimibe 10 mg for 7 days		↑ 9%	↑ 2%
Digoxin	Pitavastatin 4 mg QD + digoxin 0.25 mg for 7 days		↓ 3%	↓ 4%
Diltiazem LA	Pitavastatin 4 mg QD on Days 1-5 and 11-15 and diltiazem LA 240 mg on Days 6-15		↓ 2%	↓ 7%
Rifampin	Pitavastatin 4 mg QD + rifampin 600 mg QD for 5 days		↓ 15%	↓ 18%

BID = twice daily; QD = once daily; LA = Long Acting

* Data presented as % change represent % difference relative to the investigated drug alone (i.e., 0% = no change).

13 NONCLINICAL TOXICOLOGY

13.1 Carcinogenesis, Mutagenesis, Impairment of Fertility

In a 92-week carcinogenicity study in mice given pitavastatin, at the maximum tolerated dose of 75 mg/kg/day with systemic maximum exposures (AUC) 26 times the clinical maximum exposure at 4 mg daily, there was an absence of drug-related tumors.

In a 92-week carcinogenicity study in rats given pitavastatin at 1, 5, 25 mg/kg/day by oral gavage there was a significant increase in the incidence of thyroid follicular cell tumors at 25 mg/kg/day, which represents 295 times human systemic exposures based on AUC at the 4 mg daily maximum human dose.

In a 26-week transgenic mouse (Tg rasH2) carcinogenicity study where animals were given pitavastatin at 30, 75, and 150 mg/kg/day by oral gavage, no clinically significant tumors were observed.

Pitavastatin was not mutagenic in the Ames test with *Salmonella typhimurium* and *Escherichia coli* with and without metabolic activation, the micronucleus test following a single administration in mice and multiple administrations in rats, the unscheduled DNA synthesis test in rats, and a Comet assay in mice. In the chromosomal aberration test, clastogenicity was observed at the highest doses tested, which also elicited high levels of

cytotoxicity.

Pitavastatin had no adverse effects on male and female rat fertility at oral doses of 10 and 30 mg/kg/day, respectively, at systemic exposures 56- and 354-times clinical exposure at 4 mg daily based on AUC.

Pitavastatin treatment in rabbits resulted in mortality in males and females given 1 mg/kg/day (30-times clinical systemic exposure at 4 mg daily based on AUC) and higher during a fertility study. Although the cause of death was not determined, rabbits had gross signs of renal toxicity (kidneys whitened) indicative of possible ischemia. Lower doses (15-times human systemic exposure) did not show significant toxicity in adult males and females. However, decreased implantations, increased resorptions, and decreased viability of fetuses were observed.

14 CLINICAL STUDIES

Primary Hyperlipidemia in Adults

Study with Atorvastatin (Study 301)

LIVALO was compared with atorvastatin calcium tablets (referred to as atorvastatin) in a randomized, multicenter, double-blind, double-dummy, active-controlled, non-inferiority study of 817 adult patients with primary hyperlipidemia or mixed dyslipidemia. Patients entered a 6- to 8-week wash-out/dietary lead-in period and then were randomized to a 12-week treatment with either LIVALO or atorvastatin (Table 5). Non-inferiority of pitavastatin to a given dose of atorvastatin was considered to be demonstrated if the lower bound of the 95% CI for the mean treatment difference was greater than -6% for the mean percent change in LDL-C.

Lipid results are shown in Table 5. For the percent change from baseline to endpoint in LDL-C, LIVALO was non-inferior to atorvastatin for the two pairwise comparisons: LIVALO 2 mg vs. atorvastatin 10 mg and LIVALO 4 mg vs. atorvastatin 20 mg. Mean treatment differences (95% CI) were 0% (-3%, 3%) and 1% (-2%, 4%), respectively.

Table 5. Lipid Response by Dose of LIVALO and Atorvastatin in Adult Patients with Primary Hyperlipidemia or Mixed Dyslipidemia in Study 301 (Mean % Change from Baseline at Week 12)

Treatment	N	LDL-C	Apo-B	TC	TG	HDL-C	non-HDL-C
LIVALO 2 mg daily	315	-38	-30	-28	-14	4	-35
LIVALO 4 mg daily	298	-45	-35	-32	-19	5	-41
Atorvastatin 10 mg daily	102	-38	-29	-28	-18	3	-35
Atorvastatin 20 mg daily	102	-44	-36	-33	-22	2	-41

Study with Simvastatin (Study 302)

LIVALO was compared with simvastatin tablets (referred to as simvastatin) in a

randomized, multicenter, double-blind, double-dummy, active-controlled, non-inferiority study of 843 adult patients with primary hyperlipidemia or mixed dyslipidemia. Patients entered a 6- to 8-week wash-out/dietary lead-in period and then were randomized to a 12 week treatment with either LIVALO or simvastatin (Table 6). Non-inferiority of pitavastatin to a given dose of simvastatin was considered to be demonstrated if the lower bound of the 95% CI for the mean treatment difference was greater than -6% for the mean percent change in LDL-C.

Lipid results are shown in Table 6. For the percent change from baseline to endpoint in LDL-C, LIVALO was non-inferior to simvastatin for the two pairwise comparisons: LIVALO 2 mg vs. simvastatin 20 mg and LIVALO 4 mg vs. simvastatin 40 mg. Mean treatment differences (95% CI) were 4% (1%, 7%) and 1% (-2%, 4%), respectively.

Table 6. Lipid Response by Dose of LIVALO and Simvastatin in Adult Patients with Primary Hyperlipidemia or Mixed Dyslipidemia in Study 302 (Mean % Change from Baseline at Week 12)

Treatment	N	LDL-C	Apo-B	TC	TG	HDL-C	non-HDL-C
LIVALO 2 mg daily	307	-39	-30	-28	-16	6	-36
LIVALO 4 mg daily	319	-44	-35	-32	-17	6	-41
Simvastatin 20 mg daily	107	-35	-27	-25	-16	6	-32
Simvastatin 40 mg daily	110	-43	-34	-31	-16	7	-39

Study with Pravastatin in Geriatric Patients (Study 306)

LIVALO was compared with pravastatin sodium tablets (referred to as pravastatin) in a randomized, multicenter, double-blind, double-dummy, parallel group, active-controlled non-inferiority study of 942 geriatric patients (≥ 65 years) with primary hyperlipidemia or mixed dyslipidemia. Patients entered a 6- to 8-week wash-out/dietary lead-in period, and then were randomized to a once daily dose of LIVALO or pravastatin for 12 weeks (Table 7). Non-inferiority of LIVALO to a given dose of pravastatin was assumed if the lower bound of the 95% CI for the treatment difference was greater than -6% for the mean percent change in LDL-C.

Lipid results are shown in Table 7. LIVALO significantly reduced LDL-C compared to pravastatin as demonstrated by the following pairwise dose comparisons: LIVALO 1 mg vs. pravastatin 10 mg, LIVALO 2 mg vs. pravastatin 20 mg and LIVALO 4 mg vs. pravastatin 40 mg. Mean treatment differences (95% CI) were 9% (6%, 12%), 10% (7%, 13%) and 10% (7%, 13%), respectively.

Table 7. Lipid Response by Dose of LIVALO and Pravastatin in Geriatric Patients with Primary Hyperlipidemia or Mixed Dyslipidemia in Study 306 (Mean % Change from Baseline at Week 12)

Treatment	N	LDL-C	Apo-B	TC	TG	HDL-C	non-HDL-C
-----------	---	-------	-------	----	----	-------	-----------

LIVALO 1 mg daily	207	-31	-25	-22	-13	1	-29
LIVALO 2 mg daily	224	-39	-31	-27	-15	2	-36
LIVALO 4 mg daily	210	-44	-37	-31	-22	4	-41
Pravastatin 10 mg daily	103	-22	-17	-15	-5	0	-20
Pravastatin 20 mg daily	96	-29	-22	-21	-11	-1	-27
Pravastatin 40 mg daily	102	-34	-28	-24	-15	1	-32

Study with Simvastatin in Patients with ≥ 2 Risk Factors for Coronary Heart Disease (Study 304)

LIVALO was compared with simvastatin tablets (referred to as simvastatin) in a randomized, multicenter, double-blind, double-dummy, active-controlled, non-inferiority study of 351 adult patients with primary hyperlipidemia or mixed dyslipidemia with ≥ 2 risk factors for coronary heart disease. After a 6- to 8-week wash-out/dietary lead-in period, patients were randomized to a 12-week treatment with either LIVALO or simvastatin (Table 8). Non-inferiority of LIVALO to simvastatin was considered to be demonstrated if the lower bound of the 95% CI for the mean treatment difference was greater than -6% for the mean percent change in LDL-C.

Lipid results are shown in Table 8. LIVALO 4 mg was non-inferior to simvastatin 40 mg for percent change from baseline to endpoint in LDL-C. The mean treatment difference (95% CI) was 0% (-2%, 3%).

Table 8. Lipid Response by Dose of LIVALO and Simvastatin in Adult Patients with Primary Hyperlipidemia or Mixed Dyslipidemia with ≥ 2 Risk Factors for Coronary Heart Disease in Study 304 (Mean % Change from Baseline at Week 12)

Treatment	N	LDL-C	Apo-B	TC	TG	HDL-C	non-HDL-C
LIVALO 4 mg daily	233	-44	-34	-31	-20	7	-40
Simvastatin 40 mg daily	118	-44	-34	-31	-15	5	-39

Study with Atorvastatin in Patients with Type 2 Diabetes Mellitus (Study 305)

LIVALO was compared with atorvastatin calcium tablets (referred to as atorvastatin) in a randomized, multicenter, double-blind, double-dummy, parallel group, active-controlled, non-inferiority study of 410 adult patients with type 2 diabetes mellitus and mixed dyslipidemia. Patients entered a 6- to 8-week washout/dietary lead-in period and were randomized to a once daily dose of LIVALO or atorvastatin for 12 weeks. Non-inferiority of LIVALO was considered to be demonstrated if the lower bound of the 95% CI for the mean treatment difference was greater than -6% for the mean percent change in LDL-C.

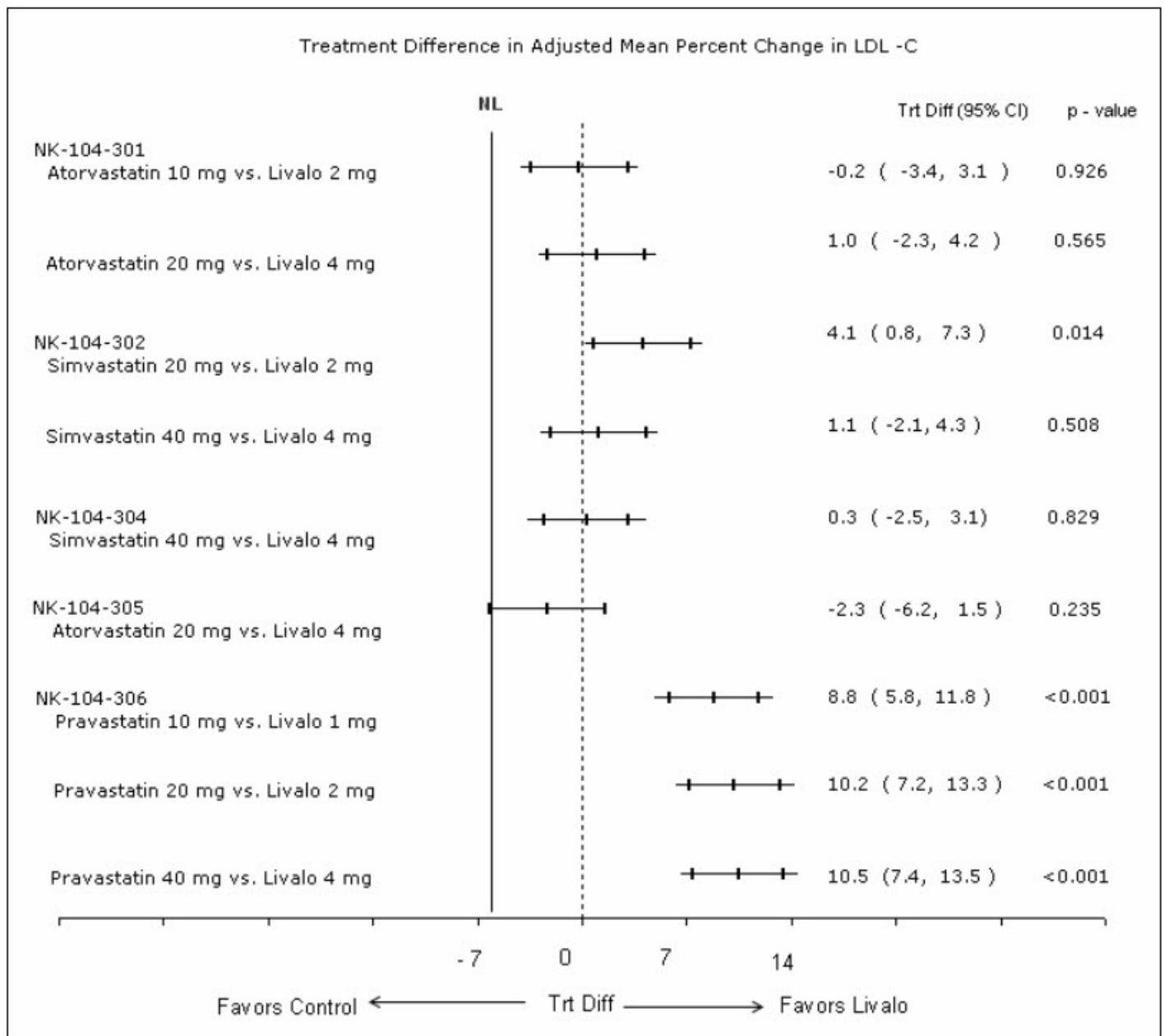
Lipid results are shown in Table 9. The treatment difference (95% CI) for LDL-C percent change from baseline was -2% (-6.2%, 1.5%). The two treatment groups were not statistically different on LDL-C. However, the lower limit of the CI was -6.2%, slightly exceeding the -6% non-inferiority limit. The study failed to demonstrate that LIVALO was not significantly different than atorvastatin in lowering LDL-C in patients with type 2 diabetes mellitus and mixed dyslipidemia.

Table 9. Lipid Response by Dose of LIVALO and Atorvastatin in Adult Patients with Type 2 Diabetes Mellitus and Mixed Dyslipidemia in Study 305 (Mean % Change from Baseline at Week 12)

Treatment	N	LDL-C	Apo-B	TC	TG	HDL-C	non-HDL-C
LIVALO 4 mg daily	274	-41	-32	-28	-20	7	-36
Atorvastatin 20 mg daily	136	-43	-34	-32	-27	8	-40

The treatment differences in efficacy in LDL-C change from baseline between LIVALO and active controls (i.e., atorvastatin, simvastatin, or pravastatin) in the in the active-controlled studies described above are summarized in Figure 1.

Figure 1. Treatment Difference in Adjusted Mean Percent Change in LDL-C between LIVALO and the Comparator (Atorvastatin, Simvastatin, or Pravastatin)



NL=non-inferiority limit.

HeFH in Pediatric Patients

In a double-blind, placebo-controlled, 12-week trial, 82 pediatric patients (36 boys and 46 girls), 8 to 16 years of age with genetically confirmed HeFH, fasting low-density lipoprotein cholesterol (LDL-C) ≥ 190 mg/dL or LDL-C ≥ 160 mg/dL with an additional cardiovascular risk factor (male gender, a family history of premature CV disease, presence of low HDL (<45 mg/dL) or high TG (>150 mg/dL), presence of high lipoprotein (a) (>75 nmol/L), presence of type 2 diabetes mellitus or presence of hypertension) were randomized to LIVALO 1 mg, 2 mg, and 4 mg. Mean LDL-C at baseline was 235 mg/dL (range 160.5 mg/dL to 441mg/dL). Approximately 39% of patients were Tanner Stage 1 at baseline.

LIVALO significantly reduced plasma LDL-C, non-HDL-C, TC, and Apo-B compared to placebo. The reductions in LDL-C, Apo-B, TC, and non-HDL-C were dose dependent. There was no statistically significant improvement in HDL-C or TG at any LIVALO dose. See the lipid results in Table 10.

Table 10. Lipid Response in Pediatric Patients with HeFH (Mean % Change from Baseline at Week 12)

Treatment	N	LDL-C	Apo-B	TC	TG*†	HDL-C*	non-HDL-C
Placebo	19	-1	-3	-1	-3	-1	-1
LIVALO 1 mg daily	20	-21	-20	-16	-14	7	-21
LIVALO 2 mg daily	24	-30	-25	-25	-15	-3	-29
LIVALO 4 mg daily	19	-38	-28	-30	5	-2	-36

* Difference from placebo not statistically significant

† Median Percent Change from Baseline at Week 12

16 HOW SUPPLIED/STORAGE AND HANDLING

LIVALO tablets are supplied as follows:

Tablet Strength	Package Size	Tablet Description	NDC
1 mg	Bottle of 90	Round white film-coated tablet debossed "KC" on one face and "1" on the reverse	66869-104-90
2 mg	Bottle of 90	Round white film-coated tablet debossed "KC" on one face and "2" on the reverse	66869-204-90
4 mg	Bottle of 90	Round white film-coated tablet debossed "KC" on one face and "4" on the reverse	66869-404-90

Store at room temperature between 15°C and 30°C (59° to 86° F) [see USP]. Protect from light.

17 PATIENT COUNSELING INFORMATION

Myopathy and Rhabdomyolysis

Advise patients that LIVALO may cause myopathy and rhabdomyolysis. Inform patients that the risk is increased when taking certain types of medication and they should discuss all medication, both prescription and over the counter, with their healthcare provider. Instruct patients to promptly report any unexplained muscle pain, tenderness or weakness particularly if accompanied by malaise or fever [see *Warnings and Precautions (5.1)*].

Hepatic Dysfunction

Inform patients that LIVALO may cause liver enzyme elevations and possibly liver failure. Advise patients to promptly report fatigue, anorexia, right upper abdominal discomfort, dark urine or jaundice [see *Warnings and Precautions (5.3)*].

Increases in HbA1c and Fasting Serum Glucose Levels

Inform patients that increases in HbA1c and fasting serum glucose levels may occur with LIVALO. Encourage patients to optimize lifestyle measures, including regular exercise, maintaining a healthy body weight, and making healthy food choices [see *Warnings and Precautions (5.4)*].

Pregnancy

Advise pregnant patients and patients who become pregnant of the potential risk to a fetus. Advise patients to inform their healthcare provider of a known or suspected pregnancy to discuss if LIVALO should be discontinued [see *Use in Specific Populations (8.1)*].

Lactation

Advise patients that breastfeeding is not recommended during treatment with LIVALO [see *Use in Specific Populations (8.2)*].

Manufactured for:

Kowa Company, Limited Tokyo 103-8433 Japan

Manufactured by:

Patheon, Inc. Cincinnati, OH 45237 USA or by Kowa Company, LTD Nagoya, 462-0024 Japan

Marketed and Distributed by:

Kowa Pharmaceuticals America, Inc. Montgomery, AL 36117 USA

LIV-RA-0148 01/2024

LIVALO is a trademark of the Kowa group of companies.

© Kowa Pharmaceuticals America, Inc. (2009)

PRINCIPAL DISPLAY PANEL - 1 mg Tablet Bottle Label

NDC 66869-104-90

Livalo®

(pitavastatin) tablets

1 mg*

Rx Only

Kowa

Dosage and Use:
See Package Insert for Full Prescribing Information.

*Each tablet contains 1.045 mg pitavastatin calcium equivalent to 1 mg pitavastatin.

Store at 25°C (77°F). Excursions permitted from 15°C-30°C (59°F-86°F). [See USP Controlled Room Temperature.]

Protect from moisture and light—
Dispense in an appropriate tight, light-resistant, child-resistant container.

NDC 66869-104-90

Livalo[®]
(pitavastatin) tablets

1 mg*
Rx Only

Kowa

Contains 90 Tablets
Manufactured under license from:
Kowa Company, Limited
Tokyo 103-8433 Japan
Product of Japan

Tablets manufactured by:
Patheon, Inc. Cincinnati, OH
45237 USA
or by Kowa Company, Ltd
Nagoya 462-0024 Japan

Marketed by:
Kowa Pharmaceuticals
America, Inc.
Montgomery, AL 36117 USA

70033509

N 3 66869-104-90 8

LIV-RA-0060

Principal Display Panel - Bottle Label Livalo 2 mg

NDC 66869-204-90

Livalo[®]
(pitavastatin) tablets

2 mg*

Rx Only

LOGO-Kowa-LOGO

Dosage and Use:
See Package Insert for Full Prescribing Information.

* Each tablet contains 2.09 mg pitavastatin calcium equivalent to 2 mg pitavastatin.

Store at 25°C (77°F). Excursions permitted from 15°C-30°C (59°F-86°F). [See USP Controlled Room Temperature.]

Protect from moisture and light—
Dispense in an appropriate tight, light-resistant, child-resistant container.

NDC 66869-204-90

Livalo[®]
(pitavastatin) tablets

2 mg*
Rx Only

Kowa

Contains 90 Tablets
Manufactured under license from:
Kowa Company, Limited
Tokyo 103-8433 Japan
Product of Japan

Tablets manufactured by:
Patheon, Inc. Cincinnati, OH
45237 USA
or by Kowa Company, Ltd
Nagoya 462-0024 Japan

Marketed by:
Kowa Pharmaceuticals
America, Inc.
Montgomery, AL 36117 USA

70033510

N 3 66869-204-90 5

LIV-RA-0061

Principal display Panel - Bottle Label Livalo 4 mg

NDC 66869-404-90

Livalo[®]
(pitavastatin) tablets

4 mg*

Rx Only

LOGO-Kowa-LOGO

Dosage and Use:
See Package Insert for Full Prescribing Information.

*Each tablet contains 4.18 mg pitavastatin calcium equivalent to 4 mg pitavastatin.

Store at 25°C (77°F). Excursions permitted from 15°C-30°C (59°F-86°F). [See USP Controlled Room Temperature.]

Protect from moisture and light—
Dispense in an appropriate tight, light-resistant, child-resistant container.

NDC 66869-404-90

Livalo[®]
(pitavastatin) tablets

4 mg*
Rx Only

Kowa

Contains 90 Tablets
Manufactured under license from:
Kowa Company, Limited
Tokyo 103-8433 Japan
Product of Japan

Tablets manufactured by:
Patheon, Inc. Cincinnati, OH
45237 USA
or by Kowa Company, Ltd
Nagoya 462-0024 Japan

Marketed by:
Kowa Pharmaceuticals
America, Inc.
Montgomery, AL 36117 USA

70033511

N 3 66869-404-90 9

LIV-RA-0062

Principal display Panel - Carton 2 mg

FREE SAMPLE NDC 66869-204-07

Livalo[®]

(pitavastatin) tablets

2 mg*

Rx Only

Contains 7 Tablets

LOGO-Kowa-LOGO

Professional Sample –

Not for Sale

*Each tablet contains:

Active ingredient: pitavastatin calcium 2.09 mg equivalent to pitavastatin 2 mg.



Principal display Panel - Carton 4 mg

FREE SAMPLE NDC 66869-404-07

Livalo®
(pitavastatin) tablets

4 mg*

Rx Only

Contains 7 Tablets

LOGO-Kowa-LOGO

Professional Sample –
Not for Sale

*Each tablet contains:

Active ingredient: pitavastatin calcium 4.18 mg equivalent to pitavastatin 4 mg.



LIVALO

pitavastatin calcium tablet, film coated

Product Information

Product Type	HUMAN PRESCRIPTION DRUG	Item Code (Source)	NDC:66869-104
Route of Administration	ORAL		

Active Ingredient/Active Moiety

Ingredient Name	Basis of Strength	Strength
pitavastatin calcium (UNII: IYD54XEG3W) (pitavastatin - UNII:M5681Q5F9P)	pitavastatin	1.045 mg

Inactive Ingredients

Ingredient Name	Strength
lactose monohydrate (UNII: EWQ57Q8I5X)	
LOW-SUBSTITUTED HYDROXYPROPYL CELLULOSE, UNSPECIFIED (UNII: 2165RE0K14)	
hypromellose, unspecified (UNII: 3NXW29V3WO)	
MAGNESIUM ALUMINOMETASILICATE TYPE IB (UNII: 8XK1039013)	
magnesium stearate (UNII: 70097M6I30)	
titanium dioxide (UNII: 15FIX9V2JP)	
triethyl citrate (UNII: 8Z96QXD6UM)	
silicon dioxide (UNII: ETJ7Z6XBU4)	

Product Characteristics

Color	white (WHITE)	Score	no score
Shape	ROUND (ROUND)	Size	6mm
Flavor		Imprint Code	1;KC
Contains			

Packaging

#	Item Code	Package Description	Marketing Start Date	Marketing End Date
1	NDC:66869-104-90	90 in 1 BOTTLE, DISPENSING; Type 0: Not a Combination Product	05/16/2019	

Marketing Information

Marketing Category	Application Number or Monograph Citation	Marketing Start Date	Marketing End Date
NDA	NDA022363	05/16/2019	

LIVALO

pitavastatin calcium tablet, film coated

Product Information

Product Type	HUMAN PRESCRIPTION DRUG	Item Code (Source)	NDC:66869-204
Route of Administration	ORAL		

Active Ingredient/Active Moiety

Ingredient Name	Basis of Strength	Strength
pitavastatin calcium (UNII: IYD54XEG3W) (pitavastatin - UNII:M5681Q5F9P)	pitavastatin	2.09 mg

Inactive Ingredients

Ingredient Name	Strength
lactose monohydrate (UNII: EWQ57Q8I5X)	
LOW-SUBSTITUTED HYDROXYPROPYL CELLULOSE, UNSPECIFIED (UNII: 2165RE0K14)	
hypromellose, unspecified (UNII: 3NXW29V3WO)	
MAGNESIUM ALUMINOMETASILICATE TYPE IB (UNII: 8XK1039013)	
magnesium stearate (UNII: 70097M6I30)	
titanium dioxide (UNII: 15FIX9V2JP)	
triethyl citrate (UNII: 8Z96QXD6UM)	
silicon dioxide (UNII: ETJ7Z6XBU4)	

Product Characteristics

Color	white (WHITE)	Score	no score
Shape	ROUND (ROUND)	Size	8mm
Flavor		Imprint Code	2;KC
Contains			

Packaging

#	Item Code	Package Description	Marketing Start Date	Marketing End Date
1	NDC:66869-204-90	90 in 1 BOTTLE, DISPENSING; Type 0: Not a Combination Product	05/16/2019	
2	NDC:66869-204-07	7 in 1 CARTON; Type 0: Not a Combination Product	05/16/2019	

Marketing Information

Marketing Category	Application Number or Monograph Citation	Marketing Start Date	Marketing End Date
NDA	NDA022363	05/16/2019	

LIVALO

pitavastatin calcium tablet, film coated

Product Information

Product Type	HUMAN PRESCRIPTION DRUG	Item Code (Source)	NDC:66869-404
Route of Administration	ORAL		

Active Ingredient/Active Moiety

Ingredient Name	Basis of Strength	Strength
pitavastatin calcium (UNII: IYD54XEG3W) (pitavastatin - UNII:M5681Q5F9P)	pitavastatin	4.18 mg

Inactive Ingredients

Ingredient Name	Strength
lactose monohydrate (UNII: EWQ57Q8I5X)	
LOW-SUBSTITUTED HYDROXYPROPYL CELLULOSE, UNSPECIFIED (UNII: 2165RE0K14)	
hypromellose, unspecified (UNII: 3NXW29V3WO)	
MAGNESIUM ALUMINOMETASILICATE TYPE IB (UNII: 8XK1039013)	
magnesium stearate (UNII: 70097M6I30)	
titanium dioxide (UNII: 15FIX9V2JP)	
triethyl citrate (UNII: 8Z96QXD6UM)	
silicon dioxide (UNII: ETJ7Z6XBU4)	

Product Characteristics

Color	white (WHITE)	Score	no score
Shape	ROUND (ROUND)	Size	10mm
Flavor		Imprint Code	4;KC
Contains			

Packaging

#	Item Code	Package Description	Marketing Start Date	Marketing End Date
1	NDC:66869-404-90	90 in 1 BOTTLE, DISPENSING; Type 0: Not a Combination Product	05/16/2019	
2	NDC:66869-404-07	7 in 1 CARTON; Type 0: Not a Combination Product	05/16/2019	

Marketing Information

Marketing Category	Application Number or Monograph Citation	Marketing Start Date	Marketing End Date
NDA	NDA022363	05/16/2019	

Labeler - Kowa Pharmaceuticals America, Inc. (119459589)

Establishment

Name	Address	ID/FEI	Business Operations
Kowa Company, Ltd.		717190628	MANUFACTURE(66869-104, 66869-204, 66869-404)

Revised: 2/2024

Kowa Pharmaceuticals America, Inc.